



F.T.A. UCI 6

MARIA JOSE HERENCIAS PALOMINO
ANALYST
SANTANDER DE TITULIZACION, S.G.F.T, S.A.
CIUDAD GRUPO SANTANDER
28660 BOADILLA DEL MONTE
marjherencias@gruposantander.com
Tel: 912893300



NAME OF THE FUND:

F.T.A. UCI 6

INFORMATION AT:

QUARTER/SEMESTER:

November 18, 2013 - February 17, 2014

YEAR:

2014

Acting on behalf of Santander de Titulización S.G.F.T., S.A. as General Manager:	Signature:
IGNACIO ORTEGA GAVARA - GENERAL MANAGER	

I. DATA OF THE FUND

Constitution Date	June 19, 2000	Paying Agent	BANCO SANTANDER	
Disbursement Date	June 22, 2000	Negotiation Market	AIAF	
Final Date of Redemption	November 16, 2030	Ratings Agencies	MOODY'S ESPAÑA	
Management Company	SANTANDER DE TITULIZACION, S.G.F.T., S.A.	Rating	Initial	Current
Credit Rights's Seller	UNION DE CREDITOS INMOBILIARIOS	CLASS A	Aaa	AH
		CLASS B	A2	Ó cash H

II. SECURITIES ISSUED CHARGED TO THE FUND: SECURITISATION BONDS

CLASS PRIORITY ISIN CODE	NUM BONDS	NOMINAL			
			Initial	Current	%Act/In
CLASS A ES0338558002	4.364	Nominal per Bond	100.000,00	8.930,53	
		Total Nominal	436.400.000,00	38.972.832,94	8,93 %
CLASS B ES0338558010	206	Nominal per Bond	100.000,00	22.184,43	
		Total Nominal	20.600.000,00	4.569.992,58	22,18 %

REDEMPTION AND INTEREST OF THE BONDS					
Current			Next		
Payment Date of the Current Period February 17, 2014			Next Payment Date May 16, 2014		
	Redemption of the Bonds	Gross Interest	Interest Rate	Gross Interest Next Coupon	Net Interest Next Coupon
CLASS A	301,40 €	11,95 €	0,5911 %	12,73 €	10,06 €
CLASS B	0,00 €	55,63 €	1,0778 %	57,65 €	45,54 €
Accrued amortisation due not payed	0,00 €				
Scheduled Amortisation	NO				

III. ASSET PURCHASED BY THE FUND: CREDIT RIGHTS

CREDIT RIGHTS	ISSUE DATE	CURRENT DATE
Number of CR's	13.139	2.444
CR's Outstanding to be amortised	457.000.004,15	43.542.838,75
CR's Outstanding per Loan to be amortised	34.781,95	17.816,2G
Interest Rate	5,00 %	1,84 %

PREPAYMENT RATE	CURRENT SITUATION
Monthly Single Rate	4,32 %
Average Monthly Single Rate	4,00 %
Constant Prepayment Rate from Constitution	11,87 %

CURRENT DELINQUENCY	Up to 1 month	From 1 to 6 months	Greater than 6 months
Debt Due (Principal + Interest)	4.309,56	11.734,43	78.021,60
Debt to be amortised	0,00	0,00	43.469.509,97
Total Debt	4.309,56	11.734,43	43.547.531,57

F.T.A. UCI 6**QUARTERLY BONDS PAYOUT REPORT**

17th, February 2014

BONDS. PRINCIPAL	
Previous Balance	44.858.135,16 €
Principal Amortised	1.315.309,60 €
Outstanding Balance	43.542.825,52 €
% of Initial Balance	9,53%
Principal accrued and unpaid	0

INTEREST PAID	
CLASS A	52.149,80 €
CLASS B	11.459,78 €
Interest accrued and unpaid	0,00 €

DATA	
Determination Date	10/02/2014
Payment Date	17/02/2014
Last Payment Date	18/11/2013
Number of Days (Act/360)	91
Reference Interest Rate (%)	0,288%
Next Payment Date	16/05/2014

RESIDUAL LIFE (YEARS)		
	INITIAL	17th, February 2014
CLASS A	6,2	0,24
CLASS B	9,8	0,24

F.T.A. UCI 6**QUARTERLY COLLATERAL REPORT**

17th, February 2014

PRINCIPAL	
Previous Balance	44.858.155,53 €
Principal Amortised	1.315.316,78 €
Outstanding Balance	43.542.838,75 €
Number of Credit Rights	2.444
LTV	31,27%

INTEREST	
Interest received during relevant period	206.366,73 €
Interest accrued during relevant period	152.081,31 €

PRINCIPAL BALANCE IN ARREARS					
	UP to 30 DAYS	30 to 60 DAYS	60 to 90 DAYS	90 to 180 DAYS	> 180 DAYS
Principal Balance in Arrears	3.522,86 €	3.306,95 €	2.258,37 €	4.008,23 €	60.232,37 €
Interest accrued on Credit Rights in Arrears	786,70 €	610,87 €	589,02 €	960,99 €	17.789,23 €
Outstanding Balance	860.852,53 €	304.082,46 €	135.580,24 €	127.850,74 €	440.012,47 €
Number of Credit Rights	33	13	5	8	29
% of Outstanding Balance	1,98%	0,70%	0,31%	0,29%	1,01%

TRANSITORY PROPERTIES	
Last balance	0,00 €
Difference in Actual Period	0,00 €
Current balance	0,00 €
Transitory properties CR's number	0

F.T.A. UCI 6

QUARTERLY REPORT - ALLOCATION OF CASH

17th, February 2014

TOTAL CASH RECEIVED END OF PERIOD	1.521.916,05 €
CASH RECEIVED - PRINCIPAL	
Amortisation of Credit Rights	1.315.316,78 €
CASH RECEIVED - INTEREST	
Interest received from Credit Rights	206.366,73 €
Interest received under GIC	37,36 €
INCOMES OF JUDICIAL	2.620,51 €
OTHERS	-2.425,33 €

TOTAL CASH PAID END OF PERIOD	1.521.916,05 €
ORDINARY EXPENSES	4.123,68 €
MANAGEMENT FEE	10.357,50 €
INTEREST PAID TO CLASS A	52.149,80 €
INTEREST PAID TO CLASS B	11.459,78 €
REDEMPTION PAID CLASS A	1.315.309,60 €
REDEMPTION PAID CLASS B	0,00 €
INTEREST SUBORDINATED LOAN SANTANDER	4.843,99 €
INTEREST SUBORDINATED LOAN UCB	4.843,99 €
ADMINISTRATION FEE	6.000,00 €
VARIABLE FEE	112.827,71 €

TREASURY ACCOUNT STATEMENT	4.570.000,04 €
PRINCIPAL RESERVE FUND	
Previous Balance	4.570.000,04 €
Period utilization	0,00 €
Outstanding Balance	4.570.000,04 €
WITHHOLDING TAXES	0,00 €
ISSUE EXPENSES WITHHELD	0,00 €
OTHERS	0,00 €

F.T.A. UCI 6

CREDIT ENHANCEMENT AND SUBORDINATED LOAN

17th, February 2014

CREDIT ENHANCEMENT		
CONCEPTS	INITIAL	17th, February 2014
SUBORDINATED ISSUE	95,49 %	10,50%
PRINCIPAL RESERVE FUND	9.597.000,00 € 2,10%	4.570.000,04 € 10,50%

SUBORDINATED LOANS		
CONCEPTS	INITIAL	17th, February 2014
SUBORDINATED LOAN A SANTANDER		
Total Outstanding Subordinated Loan	5.410.010,46 €	2.285.788,65 €
Interest Rate	2,650 %	0,84%
SUBORDINATED LOAN A UCB		
Total Outstanding Subordinated Loan	5.410.010,46 €	2.285.788,65 €
Interest Rate	2,650 %	0,84%

F.T.A. UCI 6

DEFINITIONS

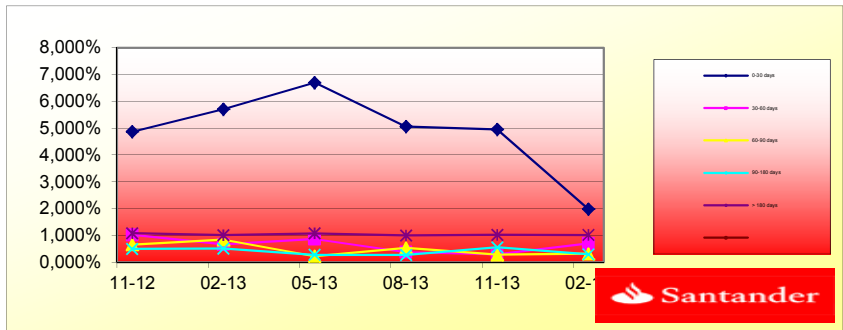
DETERMINATION DATE Means the date in which the Gestora will carry out the necessary calculations, on behalf of the Fund, for the distribution of the available funds at this date, according with the Order of Priority of Payments.

All the information regarding the Assets (Outstanding Balance of the Credit Rights, arrears' tables, transitory properties, stratification tables, etc.) are referred to this mentioned date.

TRANSITORY PROPERTIES Those assets in the balance of the Fund as a consequence of a judicial or non-judicial process.

HISTORICAL ARREARS REPORT

Data	11-12	02-13	05-13	08-13	11-13	02-14
0-30 days	4,865%	5,705%	6,698%	5,059%	4,951%	1,977%
30-60 days	1,017%	0,659%	0,862%	0,373%	0,288%	0,698%
60-90 days	0,655%	0,837%	0,225%	0,536%	0,279%	0,311%
90-180 days	0,495%	0,504%	0,273%	0,264%	0,549%	0,294%
> 180 days	1,080%	1,004%	1,072%	0,993%	1,021%	1,011%



TRIGGERS

TRIGGERS BONDS

1. IF 1.a) IS HIGHER THAN 1.b) THERE IS NO REDEMPTION OF CLASS B:

1.a) CR'S IN ARREARS OVER 90 DAYS	567.863,21 €
1.b) 7% CR'S OUTSTANDING BALANCE	3.047.998,71 €

THE CLASS B BONDS ARE ON THE MINIMUM LEVEL PERMITTED

TRIGGERS RESERVE FUND

1. IF 1.a) IS HIGHER THAN 1.b) THERE IS NO REDEMPTION OF RESERVE FUND:

1.a) CR'S IN ARREARS OVER 90 DAYS	N/A
1.b) 3% CR'S OUTSTANDING BALANCE	N/A

2. IF 2.a) IS LOWER THAN 2.b) THERE IS NO REDEMPTION OF RESERVE FUND:

2.a) WEIGHTED AVERAGE RATE CR'S	N/A
2.b) WEIGHTED AVERAGE RATE BONDS A AND B + 0,40%	N/A

3. IF 3.a) IS HIGHER THAN 3.b) THERE IS NO REDEMPTION OF RESERVE FUND:

3.a) WRITTE OFF	N/A
3.b) 0,025% INITIAL OUTSTANDING BALANCE CR'S *N/A PAYMENT DATES	N/A

THE RESERVE FUND IS ON THE MINIMUM LEVEL PERMITTED

**FONDO DE TITULIZACIÓN HIPOTECARIA
UCI 6**

L.T.V.

LTV (%)	SALDO VIVO	%	NÚMERO	% PRESTAMOS
LTV (%)	OUTS. BALANC	% OUTSTANDING	LOANS	% LOANS
0,00-9,99	796.723,78	1,8297%	138	5,6465%
10,00 - 19,99	3.175.764,49	7,2934%	205	8,3879%
20,00 - 29,99	7.712.000,87	17,7113%	334	13,6661%
30,00 - 39,99	10.085.380,26	23,1620%	313	12,8069%
40,00 - 49,99	10.308.293,72	23,6739%	300	12,2750%
50,00 - 59,99	6.239.327,04	14,3292%	169	6,9149%
60,00 - 69,99	330.830,34	0,7598%	8	0,3273%

F.T.A.: UCI 6

Counterpart

Agreement	Counterpart	Rating Agency	Minimum rating	Current rating
Treasury account	Banco Santander S.A.	Moody's	S/T: P-1	P-2

COUNTERPARTY DOES NOT HAVE THE MINIMUM RATING REQUIRED. TREASURY ACCOUNT HAS BEEN TRANSFERRED TO A COUNTERPARTY WITH MINIMUM RATING REQUIRED.

UCI 6

Date	Real Outstanding	1,06%	Remaining at the end of the month	Average Single monthly mortality	CPR	Monthly Single monthly mortality	CPR
		Prepayment vector					
							4,00%
	457.000.004,2		100,00%	100,00%			
julio-00	456.040.916,0	453.128.783,7	98,94%	99,36%	0,64%	7,40%	0,64%
agosto-00	455.077.826,1	448.828.507,4	97,89%	98,63%	0,69%	7,96%	0,74%
septiembre-00	454.110.683,2	445.856.137,4	96,85%	98,18%	0,61%	7,08%	0,45%
octubre-00	453.139.470,2	443.087.649,1	95,83%	97,78%	0,56%	6,51%	0,41%
noviembre-00	452.164.170,0	439.171.130,0	94,81%	97,13%	0,58%	6,76%	0,67%
diciembre-00	451.184.765,4	436.191.628,6	93,80%	96,68%	0,56%	6,54%	0,46%
enero-01	450.201.239,2	431.891.179,4	92,81%	95,93%	0,59%	6,87%	0,77%
febrero-01	449.213.573,9	428.312.545,1	91,83%	95,35%	0,59%	6,90%	0,61%
marzo-01	448.221.752,3	423.886.429,0	90,85%	94,57%	0,62%	7,17%	0,81%
abril-01	447.225.756,7	418.072.840,2	89,89%	93,48%	0,67%	7,77%	1,15%
mayo-01	446.225.569,6	414.462.703,6	88,94%	92,88%	0,67%	7,74%	0,64%
junio-01	445.221.173,5	410.239.612,2	87,99%	92,14%	0,68%	7,86%	0,80%
julio-01	444.212.550,4	405.614.216,5	87,06%	91,31%	0,70%	8,05%	0,90%
agosto-01	443.199.682,8	400.238.316,5	86,14%	90,31%	0,73%	8,37%	1,10%
septiembre-01	442.182.552,7	395.859.610,6	85,22%	89,52%	0,74%	8,47%	0,87%
octubre-01	441.161.142,1	391.241.620,9	84,32%	88,68%	0,75%	8,61%	0,94%
noviembre-01	440.135.433,2	385.838.182,2	83,43%	87,66%	0,77%	8,88%	1,15%
diciembre-01	439.105.407,7	380.748.736,1	82,54%	86,71%	0,79%	9,07%	1,09%
enero-02	438.071.047,5	375.271.007,5	81,67%	85,66%	0,81%	9,31%	1,21%
febrero-02	437.032.334,3	370.042.745,41	80,80%	84,67%	0,83%	9,50%	1,16%
marzo-02	435.989.249,9	364.551.475,1	79,94%	83,61%	0,85%	9,72%	1,25%
abril-02	434.941.775,9	359.297.389,6	79,10%	82,61%	0,86%	9,90%	1,20%
mayo-02	433.889.893,8	353.940.719,2	78,26%	81,57%	0,88%	10,08%	1,25%
junio-02	432.833.585,0	347.793.248,4	77,43%	80,35%	0,91%	10,36%	1,50%
julio-02	431.774.155,1	342.309.563,3	76,61%	79,28%	0,92%	10,55%	1,34%
agosto-02	430.710.266,9	336.877.719,2	75,79%	78,21%	0,94%	10,72%	1,34%
septiembre-02	429.641.901,5	332.638.740,1	74,99%	77,42%	0,94%	10,75%	1,01%
octubre-02	428.569.040,0	328.113.486,4	74,19%	76,56%	0,95%	10,82%	1,11%
noviembre-02	427.491.663,6	324.171.387,7	73,41%	75,83%	0,95%	10,82%	0,95%
diciembre-02	426.409.753,2	318.147.224,8	72,63%	74,61%	0,97%	11,06%	1,61%
enero-03	425.324.271,8	313.840.105,4	71,86%	73,79%	0,98%	11,10%	1,10%

Date	Real Outstanding	1,06%	Remaining at the end of the month	Average Single monthly mortality	CPR	Monthly Single monthly mortality	CPR	
		Prepayment vector						
							4,00%	
febrero-03	424.234.222,3	308.434.679,1	71,10%	72,70%	0,99%	11,27%	1,47%	16,28%
marzo-03	423.139.585,5	302.052.495,6	70,34%	71,38%	1,02%	11,54%	1,82%	19,74%
abril-03	422.040.342,2	296.379.448,4	69,60%	70,23%	1,03%	11,73%	1,62%	17,82%
mayo-03	420.936.472,8	290.615.261,4	68,86%	69,04%	1,05%	11,93%	1,69%	18,47%
junio-03	419.827.958,0	284.645.570,9	68,13%	67,80%	1,07%	12,15%	1,80%	19,54%
julio-03	418.717.512,0	276.839.156,1	67,41%	66,12%	1,11%	12,56%	2,48%	26,06%
agosto-03	417.602.392,7	267.980.363,8	66,69%	64,17%	1,16%	13,07%	2,94%	30,11%
septiembre-03	416.482.580,7	261.911.338,7	65,99%	62,89%	1,18%	13,30%	2,00%	21,55%
octubre-03	415.358.056,2	254.035.675,0	65,29%	61,16%	1,22%	13,71%	2,74%	28,39%
noviembre-03	414.228.799,2	246.480.453,8	64,59%	59,50%	1,26%	14,10%	2,71%	28,08%
diciembre-03	413.094.790,0	239.591.881,9	63,91%	58,00%	1,29%	14,41%	2,53%	26,45%
enero-04	411.956.645,0	232.532.574,9	63,23%	56,45%	1,32%	14,75%	2,68%	27,80%
febrero-04	410.813.710,2	227.850.234,3	62,56%	55,46%	1,33%	14,85%	1,74%	19,00%
marzo-04	409.665.965,6	222.469.311,6	61,90%	54,31%	1,35%	15,03%	2,09%	22,37%
abril-04	408.513.391,0	217.788.596,9	61,24%	53,31%	1,36%	15,13%	1,83%	19,86%
mayo-04	407.355.965,9	211.304.679,0	60,59%	51,87%	1,39%	15,43%	2,70%	28,01%
junio-04	406.193.669,9	206.609.961,4	59,95%	50,86%	1,40%	15,55%	1,94%	20,97%
julio-04	405.030.380,6	201.387.274,7	59,31%	49,72%	1,42%	15,73%	2,25%	23,88%
agosto-04	403.862.195,8	196.432.862,3	58,68%	48,64%	1,43%	15,88%	2,18%	23,22%
septiembre-04	402.689.094,9	193.264.517,0	58,06%	47,99%	1,43%	15,86%	1,33%	14,80%

Date	Real Outstanding	1,06%	Remaining at the end of the month	Average Single monthly mortality	CPR	Monthly Single monthly mortality	CPR	
		Prepayment vector						
							4,00%	
octubre-04	401.511.057,2	189.723.138,8	57,45%	47,25%	1,43%	15,89%	1,54%	17,04%
noviembre-04	400.328.061,9	186.369.970,8	56,84%	46,55%	1,43%	15,90%	1,48%	16,35%
diciembre-04	399.140.088,2	182.504.224,3	56,24%	45,72%	1,44%	15,96%	1,78%	19,42%
enero-05	397.949.157,2	178.392.645,5	55,64%	44,83%	1,45%	16,06%	1,96%	21,15%
febrero-05	396.753.214,3	174.837.087,6	55,05%	44,07%	1,45%	16,10%	1,70%	18,57%
marzo-05	395.552.238,6	171.903.827,8	54,47%	43,46%	1,45%	16,09%	1,38%	15,35%
abril-05	394.346.208,7	168.239.247,0	53,89%	42,66%	1,46%	16,16%	1,83%	19,90%
mayo-05	393.135.103,5	164.202.790,5	53,32%	41,77%	1,47%	16,27%	2,10%	22,47%
junio-05	391.918.901,5	160.739.959,7	52,75%	41,01%	1,47%	16,33%	1,81%	19,63%
julio-05	390.701.860,8	156.628.073,3	52,19%	40,09%	1,49%	16,46%	2,25%	23,94%
agosto-05	389.479.698,4	152.963.373,2	51,64%	39,27%	1,50%	16,55%	2,03%	21,85%
septiembre-05	388.252.392,8	150.814.394,0	51,09%	38,84%	1,49%	16,48%	1,09%	12,36%
octubre-05	387.019.922,2	147.200.821,1	50,55%	38,03%	1,50%	16,58%	2,09%	22,34%
noviembre-05	385.782.265,0	144.039.594,3	50,01%	37,34%	1,50%	16,63%	1,83%	19,91%
diciembre-05	384.539.399,3	141.159.654,6	49,48%	36,71%	1,51%	16,66%	1,68%	18,42%
enero-06	383.297.061,2	138.445.593,2	48,96%	36,12%	1,51%	16,67%	1,60%	17,65%
febrero-06	382.049.494,9	135.044.659,8	48,44%	35,35%	1,52%	16,77%	2,14%	22,84%
marzo-06	380.796.678,4	132.300.064,1	47,93%	34,74%	1,52%	16,79%	1,71%	18,70%
abril-06	379.538.589,7	129.075.221,0	47,42%	34,01%	1,53%	16,88%	2,11%	22,62%
mayo-06	378.275.206,6	126.639.279,5	46,91%	33,48%	1,53%	16,89%	1,56%	17,19%
junio-06	377.006.506,7	124.003.623,7	46,42%	32,89%	1,53%	16,92%	1,75%	19,11%
julio-06	375.739.564,1	120.891.562,8	45,92%	32,17%	1,54%	17,01%	2,18%	23,25%
agosto-06	374.467.289,9	118.426.272,7	45,44%	31,63%	1,54%	17,03%	1,71%	18,66%
septiembre-06	373.189.661,5	116.764.763,8	44,96%	31,29%	1,54%	16,97%	1,07%	12,06%
octubre-06	371.906.656,4	114.821.542,6	44,48%	30,87%	1,53%	16,94%	1,32%	14,79%
noviembre-06	370.618.252,0	112.351.017,3	44,01%	30,31%	1,54%	16,97%	1,81%	19,70%
diciembre-06	369.324.425,6	109.914.875,8	43,54%	29,76%	1,54%	17,01%	1,83%	19,84%
enero-07	368.030.272,9	107.970.795,4	43,08%	29,34%	1,54%	17,00%	1,42%	15,80%
febrero-07	366.730.674,0	106.255.615,9	42,62%	28,97%	1,54%	16,96%	1,24%	13,90%
marzo-07	365.425.606,0	105.031.432,5	42,17%	28,74%	1,53%	16,87%	0,80%	9,18%
abril-07	364.115.045,8	103.282.607,4	41,72%	28,37%	1,52%	16,84%	1,31%	14,65%
mayo-07	362.798.970,3	101.544.012,5	41,28%	27,99%	1,52%	16,81%	1,33%	14,81%
junio-07	361.477.356,4	100.393.799,9	40,84%	27,77%	1,51%	16,72%	0,77%	8,87%
julio-07	360.160.610,4	98.783.980,9	40,41%	27,43%	1,51%	16,69%	1,24%	13,95%
agosto-07	358.838.323,2	97.421.136,6	39,98%	27,15%	1,50%	16,63%	1,02%	11,54%
septiembre-07	357.510.471,3	96.000.767,8	39,56%	26,85%	1,50%	16,59%	1,09%	12,34%
octubre-07	356.177.031,4	94.815.177,8	39,14%	26,62%	1,49%	16,51%	0,87%	9,90%
noviembre-07	354.837.980,0	93.668.706,7	38,72%	26,40%	1,49%	16,44%	0,84%	9,59%
diciembre-07	353.493.293,3	92.475.277,8	38,31%	26,16%	1,48%	16,37%	0,90%	10,27%
enero-08	352.150.345,0	91.072.415,0	37,91%	25,86%	1,48%	16,33%	1,14%	12,87%

Date	Real Outstanding			Average Single monthly mortality	CPR	Monthly Single monthly mortality	CPR	
		1,06%	Remaining at the end of the month					
		Prepayment vector						
							4,00%	
febrero-08	350.801.745,0	90.178.994,2	37,50%	25,71%	1,47%	16,24%	0,60%	6,97%
marzo-08	349.447.469,8	88.957.504,4	37,11%	25,46%	1,46%	16,18%	0,97%	11,06%
abril-08	348.087.495,2	87.358.089,4	36,71%	25,10%	1,46%	16,18%	1,41%	15,71%
mayo-08	346.721.797,5	85.556.925,8	36,32%	24,68%	1,46%	16,20%	1,68%	18,36%
junio-08	345.350.352,4	84.237.854,7	35,94%	24,39%	1,46%	16,17%	1,15%	12,97%
julio-08	343.982.411,4	83.150.819,9	35,56%	24,17%	1,45%	16,11%	0,90%	10,26%
agosto-08	342.608.713,7	82.088.148,7	35,18%	23,96%	1,45%	16,05%	0,88%	10,09%
septiembre-08	341.229.234,9	81.307.334,0	34,81%	23,83%	1,44%	15,96%	0,55%	6,41%
octubre-08	339.843.950,8	80.607.800,6	34,44%	23,72%	1,43%	15,86%	0,46%	5,34%
noviembre-08	338.452.837,1	79.913.268,5	34,07%	23,61%	1,42%	15,76%	0,45%	5,32%
diciembre-08	337.055.869,0	79.110.607,2	33,71%	23,47%	1,41%	15,68%	0,59%	6,90%
enero-09	335.667.288,9	78.397.347,6	33,36%	23,36%	1,40%	15,59%	0,49%	5,74%
febrero-09	334.272.865,3	77.963.628,1	33,00%	23,32%	1,39%	15,46%	0,14%	1,65%
marzo-09	332.872.573,4	77.088.351,3	32,65%	23,16%	1,38%	15,40%	0,71%	8,16%
abril-09	331.466.388,7	76.151.863,4	32,31%	22,97%	1,38%	15,34%	0,80%	9,14%
mayo-09	330.054.286,3	75.640.093,4	31,96%	22,92%	1,37%	15,23%	0,25%	2,92%
junio-09	328.636.241,2	74.782.635,8	31,62%	22,76%	1,36%	15,17%	0,71%	8,16%
julio-09	327.233.118,9	74.079.720,5	31,29%	22,64%	1,35%	15,09%	0,52%	6,01%
agosto-09	325.824.091,8	73.119.413,8	30,96%	22,44%	1,35%	15,04%	0,87%	9,95%
septiembre-09	324.409.135,0	72.373.766,9	30,63%	22,31%	1,34%	14,97%	0,59%	6,83%
octubre-09	322.988.223,6	71.540.102,4	30,30%	22,15%	1,34%	14,91%	0,72%	8,27%
noviembre-09	321.561.332,5	70.843.524,9	29,98%	22,03%	1,33%	14,84%	0,53%	6,23%
diciembre-09	320.128.436,6	70.075.071,7	29,66%	21,89%	1,32%	14,78%	0,64%	7,44%
enero-10	318.700.982,4	69.407.998,1	29,35%	21,78%	1,32%	14,70%	0,51%	5,93%
febrero-10	317.267.521,0	68.883.690,5	29,04%	21,71%	1,31%	14,61%	0,31%	3,62%
marzo-10	315.828.027,1	68.079.926,9	28,73%	21,56%	1,30%	14,56%	0,72%	8,27%
abril-10	314.382.475,4	67.331.944,8	28,43%	21,42%	1,30%	14,50%	0,64%	7,46%
mayo-10	312.930.840,2	66.681.412,3	28,12%	21,31%	1,29%	14,44%	0,51%	5,91%
junio-10	311.473.096,1	65.850.842,7	27,83%	21,14%	1,29%	14,39%	0,78%	9,01%
julio-10	310.020.928,4	65.170.200,7	27,53%	21,02%	1,28%	14,33%	0,57%	6,63%
agosto-10	308.562.649,5	64.720.129,2	27,24%	20,97%	1,27%	14,24%	0,22%	2,62%
septiembre-10	307.098.233,7	64.222.840,5	26,95%	20,91%	1,26%	14,16%	0,30%	3,49%
octubre-10	305.627.655,1	63.659.901,9	26,67%	20,83%	1,26%	14,09%	0,40%	4,69%
noviembre-10	304.150.887,9	63.183.559,8	26,38%	20,77%	1,25%	14,00%	0,27%	3,15%
diciembre-10	302.667.905,9	62.574.931,8	26,10%	20,67%	1,24%	13,94%	0,48%	5,59%
enero-11	301.201.153,4	61.684.530,3	25,83%	20,48%	1,24%	13,91%	0,94%	10,75%
febrero-11	299.728.228,4	61.178.183,47	25,55%	20,41%	1,23%	13,84%	0,33%	3,93%
marzo-11	298.249.104,8	60.526.819,9	25,28%	20,29%	1,23%	13,79%	0,57%	6,68%
abril-11	296.763.756,6	60.037.298,6	25,01%	20,23%	1,22%	13,71%	0,31%	3,68%
mayo-11	295.272.157,5	59.570.470,7	24,75%	20,17%	1,21%	13,64%	0,28%	3,27%
junio-11	293.774.281,3	59.035.458,4	24,49%	20,10%	1,21%	13,57%	0,39%	4,61%

Date	Real Outstanding		Remaining at the end of the month		Average Single monthly mortality	CPR	Monthly Single monthly mortality	CPR
	1,06%							
	Prepayment vector							
								4,00%
julio-11	292.290.634,9	58.463.062,2	24,23%	20,00%	1,20%	13,52%	0,47%	5,46%
agosto-11	290.800.744,9	57.974.898,2	23,97%	19,94%	1,20%	13,45%	0,33%	3,85%
septiembre-11	289.304.584,9	57.499.936,9	23,71%	19,88%	1,19%	13,38%	0,31%	3,61%
octubre-11	287.802.128,6	56.961.821,9	23,46%	19,79%	1,18%	13,32%	0,42%	4,91%
noviembre-11	286.293.349,4	56.377.271,8	23,21%	19,69%	1,18%	13,27%	0,50%	5,89%
diciembre-11	284.778.220,8	55.786.401,7	22,97%	19,59%	1,17%	13,22%	0,52%	6,08%
enero-12	283.280.151,5	55.100.114,3	22,72%	19,45%	1,17%	13,18%	0,71%	8,17%
febrero-12	281.775.777,9	54.677.183,7	22,48%	19,40%	1,16%	13,11%	0,24%	2,82%
marzo-12	280.265.073,3	54.284.122,3	22,25%	19,37%	1,16%	13,04%	0,18%	2,18%
abril-12	278.748.011,2	53.747.585,9	22,01%	19,28%	1,15%	12,99%	0,45%	5,26%
mayo-12	277.224.564,7	53.349.080,2	21,78%	19,24%	1,15%	12,92%	0,20%	2,33%
junio-12	275.694.707,1	52.790.130,2	21,55%	19,15%	1,14%	12,87%	0,50%	5,82%
julio-12	274.190.230,1	52.297.273,1	21,32%	19,07%	1,14%	12,81%	0,39%	4,58%
agosto-12	272.679.421,7	51.801.946,8	21,09%	19,00%	1,13%	12,76%	0,40%	4,68%
septiembre-12	271.162.255,4	51.328.311,8	20,87%	18,93%	1,13%	12,70%	0,36%	4,23%
octubre-12	269.638.704,2	50.833.065,7	20,65%	18,85%	1,12%	12,65%	0,41%	4,76%
noviembre-12	268.108.741,5	50.318.615,1	20,43%	18,77%	1,12%	12,61%	0,45%	5,24%
diciembre-12	266.572.340,2	49.798.821,6	20,21%	18,68%	1,11%	12,56%	0,46%	5,41%
enero-13	265.051.533,3	49.234.420,4	20,00%	18,58%	1,11%	12,52%	0,57%	6,59%
febrero-13	263.524.326,2	48.797.974,1	19,78%	18,52%	1,10%	12,47%	0,31%	3,68%
marzo-13	261.990.692,2	48.327.204,1	19,57%	18,45%	1,10%	12,42%	0,39%	4,52%
abril-13	260.450.604,2	47.903.838,1	19,37%	18,39%	1,09%	12,36%	0,29%	3,42%
mayo-13	258.904.034,9	47.487.232,9	19,16%	18,34%	1,09%	12,30%	0,28%	3,28%
junio-13	257.350.957,2	46.965.860,9	18,96%	18,25%	1,08%	12,26%	0,50%	5,85%
julio-13	255.807.272,4	46.570.982,4	18,76%	18,21%	1,08%	12,21%	0,24%	2,87%
agosto-13	254.257.091,4	46.100.287,5	18,56%	18,13%	1,07%	12,16%	0,41%	4,78%
septiembre-13	252.700.386,6	45.651.534,8	18,36%	18,07%	1,07%	12,12%	0,36%	4,27%
octubre-13	251.137.130,8	45.269.836,5	18,17%	18,03%	1,07%	12,06%	0,22%	2,59%
noviembre-13	249.567.296,2	44.858.155,5	17,97%	17,97%	1,06%	12,01%	0,29%	3,38%
diciembre-13	247.990.855,2	44.408.974,2	17,78%	17,91%	1,06%	11,96%	0,37%	4,37%
enero-14	246.475.622,5	43.974.762,1	17,60%	17,84%	1,05%	11,92%	0,37%	4,34%
febrero-14	244.954.013,2	43.542.838,8	17,41%	17,78%	1,05%	11,87%	0,37%	4,32%

UCI 6

DEAL 457.000.000
 MEZZ. DECLINN 8,80%
 MEZZ. STOPS DECLINN 1,00%
 VIDA RESIDUAL DESDE 09/02/2014

FECHA	PRINCIPAL AVAILABLE	SENIOR NOTES	MEZZANIE NOTES	SERIE A PRINCIPAL	0,24	SERIE B PRINCIPAL	0,24
					VIDA MEDIA		VIDA MEDIA
		436.400.000,00	20.600.000,00				
08/07/2000		0	436.400.000,00	0	0	0	0
08/08/2000	1	0	436.400.000,00	0	0	0	0
08/09/2000	1	0	436.400.000,00	0	0	0	0
08/10/2000	1	0	436.400.000,00	0	0	0	0
08/11/2000	1	28.304.681	436.400.000,00	28.304.681	-137.022.959.075	0	0
08/12/2000	1	0	408.095.319,34	0	0	0	0
08/01/2001	1	0	408.095.319,34	0	0	0	0
08/02/2001	1	16.201.897	408.095.319,34	16.201.897	-76.942.809.634	0	0
09/03/2001	1	0	391.893.422,18	0	0	0	0
09/04/2001	1	0	391.893.422,18	0	0	0	0
09/05/2001	1	15.639.964	391.893.422,18	15.639.964	-72.866.591.216	0	0
09/06/2001	1	0	376.253.458,40	0	0	0	0
09/07/2001	1	0	376.253.458,40	0	0	0	0
09/08/2001	1	15.096.715	376.253.458,40	15.096.715	-68.946.695.202	0	0
09/09/2001	1	0	361.156.743,89	0	0	0	0
09/10/2001	1	0	361.156.743,89	0	0	0	0
09/11/2001	1	14.571.542	361.156.743,89	14.571.542	-65.207.651.288	0	0
09/12/2001	1	0	346.585.201,70	0	0	0	0
09/01/2002	1	0	346.585.201,70	0	0	0	0
09/02/2002	1	14.063.859	346.585.201,70	14.063.859	-61.641.894.208	0	0
09/03/2002	1	0	332.521.342,65	0	0	0	0
09/04/2002	1	0	332.521.342,65	0	0	0	0
09/05/2002	1	13.573.096	332.521.342,65	13.573.096	-58.282.875.189	0	0
09/06/2002	1	0	318.948.246,43	0	0	0	0
09/07/2002	1	0	318.948.246,43	0	0	0	0
09/08/2002	1	13.096.691	318.948.246,43	13.096.691	-55.032.297.203	0	0
09/09/2002	1	0	305.851.555,04	0	0	0	0
09/10/2002	1	0	305.851.555,04	0	0	0	0
09/11/2002	1	12.637.257	305.851.555,04	12.637.257	-51.939.124.608	0	0
09/12/2002	1	0	293.214.298,44	0	0	0	0
09/01/2003	1	0	293.214.298,44	0	0	0	0
09/02/2003	1	12.192.769	293.214.298,44	12.192.769	-48.990.547.739	0	0
09/03/2003	1	0	281.021.528,97	0	0	0	0
09/04/2003	1	0	281.021.528,97	0	0	0	0
09/05/2003	1	11.763.887	281.021.528,97	11.763.887	-46.220.310.456	0	0
09/06/2003	1	0	269.257.642,37	0	0	0	0
09/07/2003	1	0	269.257.642,37	0	0	0	0
09/08/2003	1	11.346.396	269.257.642,37	11.346.396	-43.536.122.793	0	0
09/09/2003	1	0	257.911.246,02	0	0	0	0
09/10/2003	1	0	257.911.246,02	0	0	0	0
09/11/2003	1	10.944.826	257.911.246,02	10.944.826	-40.988.373.465	0	0
09/12/2003	1	0	246.966.420,00	0	0	0	0
09/01/2004	1	0	246.966.420,00	0	0	0	0
09/02/2004	1	10.557.731	246.966.420,00	10.557.731	-38.567.389.654	0	0
08/03/2004	1	0	236.408.689,46	0	0	0	0
08/04/2004	1	0	236.408.689,46	0	0	0	0
08/05/2004	1	10.184.046	236.408.689,46	9.547.803	-34.028.371.666	636.242	-2.267.566.614
08/06/2004	1	0	226.860.885,96	0	0	0	0
08/07/2004	1	0	226.860.885,96	0	0	0	0
08/08/2004	1	9.818.720	226.860.885,96	9.024.559	-31.333.269.810	794.161	-2.757.327.743
08/09/2004	1	0	217.836.326,68	0	0	0	0
08/10/2004	1	0	217.836.326,68	0	0	0	0
08/11/2004	1	9.468.104	217.836.326,68	8.702.301	-29.413.778.329	765.803	-2.588.412.493

FECHA		PRINCIPAL AVAILABLE	SENIOR NOTES	MEZZANIE NOTES	SERIE A PRINCIPAL	VIDA MEDIA	SERIE B PRINCIPAL	VIDA MEDIA
08/12/2004	1	0	209.134.025,40	18.403.794,24	0	0	0	0
08/01/2005	1	0	209.134.025,40	18.403.794,24	0	0	0	0
08/02/2005	1	9.129.302	209.134.025,40	18.403.794,24	8.390.902	-27.589.286.403	738.399	-2.427.857.203
09/03/2005	1	0	200.743.123,21	17.665.394,84	0	0	0	0
09/04/2005	1	0	200.743.123,21	17.665.394,84	0	0	0	0
09/05/2005	1	8.803.101	200.743.123,21	17.665.394,84	8.091.085	-25.875.291.406	712.016	-2.277.025.644
09/06/2005	1	0	192.652.037,72	16.953.379,32	0	0	0	0
09/07/2005	1	0	192.652.037,72	16.953.379,32	0	0	0	0
09/08/2005	1	8.484.582	192.652.037,72	16.953.379,32	7.798.329	-24.221.610.417	686.253	-2.131.501.717
09/09/2005	1	0	184.853.708,54	16.267.126,35	0	0	0	0
09/10/2005	1	0	184.853.708,54	16.267.126,35	0	0	0	0
09/11/2005	1	8.179.154	184.853.708,54	16.267.126,35	7.517.605	-22.658.062.161	661.549	-1.993.909.470
09/12/2005	1	0	177.336.103,32	15.605.577,09	0	0	0	0
09/01/2006	1	0	177.336.103,32	15.605.577,09	0	0	0	0
09/02/2006	1	7.880.645	177.336.103,32	15.605.577,09	7.243.240	-21.164.746.724	637.405	-1.862.497.712
09/03/2006	1	0	170.092.863,51	14.968.171,99	0	0	0	0
09/04/2006	1	0	170.092.863,51	14.968.171,99	0	0	0	0
09/05/2006	1	7.595.185	170.092.863,51	14.968.171,99	6.980.868	-19.776.800.299	614.316	-1.740.358.426
09/06/2006	1	0	163.111.995,06	14.353.855,57	0	0	0	0
09/07/2006	1	0	163.111.995,06	14.353.855,57	0	0	0	0
09/08/2006	1	7.315.689	163.111.995,06	14.353.855,57	6.723.979	-18.430.426.534	591.710	-1.621.877.535
09/09/2006	1	0	156.388.016,03	13.762.145,41	0	0	0	0
09/10/2006	1	0	156.388.016,03	13.762.145,41	0	0	0	0
09/11/2006	1	7.049.080	156.388.016,03	13.762.145,41	6.478.934	-17.162.695.207	570.146	-1.510.317.178
09/12/2006	1	0	149.909.082,39	13.191.999,25	0	0	0	0
09/01/2007	1	0	149.909.082,39	13.191.999,25	0	0	0	0
09/02/2007	1	6.790.336	149.909.082,39	13.191.999,25	6.241.118	-15.958.538.236	549.218	-1.404.351.365
09/03/2007	1	0	143.667.964,58	12.642.780,88	0	0	0	0
09/04/2007	1	0	143.667.964,58	12.642.780,88	0	0	0	0
09/05/2007	1	6.542.686	143.667.964,58	12.642.780,88	6.013.498	-14.841.313.006	529.188	-1.306.035.545
09/06/2007	1	0	137.654.466,61	12.113.593,06	0	0	0	0
09/07/2007	1	0	137.654.466,61	12.113.593,06	0	0	0	0
09/08/2007	1	6.297.254	137.654.466,61	12.113.593,06	5.787.918	-13.752.092.324	509.337	-1.210.184.125
09/09/2007	1	0	131.866.548,96	11.604.256,31	0	0	0	0
09/10/2007	1	0	131.866.548,96	11.604.256,31	0	0	0	0
09/11/2007	1	6.064.591	131.866.548,96	11.604.256,31	5.574.072	-12.731.181.235	490.518	-1.120.343.949
09/12/2007	1	0	126.292.476,62	11.113.737,94	0	0	0	0
09/01/2008	1	0	126.292.476,62	11.113.737,94	0	0	0	0
09/02/2008	1	5.838.424	126.292.476,62	11.113.737,94	5.366.198	-11.762.706.963	472.225	-1.035.118.213
08/03/2008	1	0	120.926.278,18	10.641.512,48	0	0	0	0
08/04/2008	1	0	120.926.278,18	10.641.512,48	0	0	0	0
08/05/2008	1	5.622.903	120.926.278,18	10.641.512,48	5.168.110	-10.868.534.754	454.794	-956.431.058
08/06/2008	1	0	115.758.168,46	10.186.718,82	0	0	0	0
08/07/2008	1	0	115.758.168,46	10.186.718,82	0	0	0	0
08/08/2008	1	5.410.945	115.758.168,46	10.186.718,82	4.973.295	-10.001.296.636	437.650	-880.114.104
08/09/2008	1	0	110.784.873,26	9.749.068,85	0	0	0	0
08/10/2008	1	0	110.784.873,26	9.749.068,85	0	0	0	0
08/11/2008	1	5.209.683	110.784.873,26	9.749.068,85	4.788.311	-9.188.769.161	421.371	-808.611.686
08/12/2008	1	0	105.996.562,08	9.327.697,46	0	0	0	0
08/01/2009	1	0	105.996.562,08	9.327.697,46	0	0	0	0
08/02/2009	1	5.009.099	105.996.562,08	9.327.697,46	4.603.952	-8.411.419.744	405.148	-740.204.937
09/03/2009	1	0	101.392.610,39	8.922.549,71	0	0	0	0
09/04/2009	1	0	101.392.610,39	8.922.549,71	0	0	0	0
09/05/2009	1	4.820.370	101.392.610,39	8.922.549,71	4.430.487	-7.695.756.181	389.883	-677.226.544
09/06/2009	1	0	96.962.123,23	8.532.666,84	0	0	0	0
09/07/2009	1	0	96.962.123,23	8.532.666,84	0	0	0	0
09/08/2009	1	4.629.814	96.962.123,23	8.532.666,84	4.255.344	-7.000.041.095	374.470	-616.003.616
09/09/2009	1	0	92.706.779,10	8.158.196,56	0	0	0	0
09/10/2009	1	0	92.706.779,10	8.158.196,56	0	0	0	0

FECHA		PRINCIPAL AVAILABLE	SENIOR NOTES	MEZZANIE NOTES	SERIE A PRINCIPAL	VIDA MEDIA	SERIE B PRINCIPAL	VIDA MEDIA
09/11/2009	1	4.452.647	92.706.779,10	8.158.196,56	4.092.506	-6.355.662.064	360.141	-559.298.262
09/12/2009	1	0	88.614.272,95	7.798.056,02	0	0	0	0
09/01/2010	1	0	88.614.272,95	7.798.056,02	0	0	0	0
09/02/2010	1	4.281.298	88.614.272,95	7.798.056,02	3.935.017	-5.749.059.762	346.281	-505.917.259
09/03/2010	1	0	84.679.256,00	7.451.774,53	0	0	0	0
09/04/2010	1	0	84.679.256,00	7.451.774,53	0	0	0	0
09/05/2010	1	4.119.365	84.679.256,00	7.451.774,53	3.786.181	-5.194.640.482	333.184	-457.128.362
09/06/2010	1	0	80.893.074,89	7.118.590,59	0	0	0	0
09/07/2010	1	0	80.893.074,89	7.118.590,59	0	0	0	0
09/08/2010	1	3.959.910	80.893.074,89	7.118.590,59	3.639.623	-4.658.717.834	320.287	-409.967.169
09/09/2010	1	0	77.253.451,58	6.798.303,74	0	0	0	0
09/10/2010	1	0	77.253.451,58	6.798.303,74	0	0	0	0
09/11/2010	1	3.809.324	77.253.451,58	6.798.303,74	3.501.217	-4.159.445.435	308.107	-366.031.198
09/12/2010	1	0	73.752.234,88	6.490.196,67	0	0	0	0
09/01/2011	1	0	73.752.234,88	6.490.196,67	0	0	0	0
09/02/2011	1	3.655.583	73.752.234,88	6.490.196,67	3.359.911	-3.682.462.532	295.672	-324.056.703
09/03/2011	1	0	70.392.323,82	6.194.524,50	0	0	0	0
09/04/2011	1	0	70.392.323,82	6.194.524,50	0	0	0	0
09/05/2011	1	3.513.231	70.392.323,82	6.194.524,50	3.229.072	-3.251.675.915	284.158	-286.147.481
09/06/2011	1	0	67.163.251,41	5.910.366,12	0	0	0	0
09/07/2011	1	0	67.163.251,41	5.910.366,12	0	0	0	0
09/08/2011	1	3.371.626	67.163.251,41	5.910.366,12	3.098.921	-2.835.513.053	272.705	-249.525.149
09/09/2011	1	0	64.064.330,04	5.637.661,04	0	0	0	0
09/10/2011	1	0	64.064.330,04	5.637.661,04	0	0	0	0
09/11/2011	1	3.240.132	64.064.330,04	5.637.661,04	2.978.062	-2.450.945.109	262.069	-215.683.170
09/12/2011	1	0	61.086.267,94	5.375.591,58	0	0	0	0
09/01/2012	1	0	61.086.267,94	5.375.591,58	0	0	0	0
09/02/2012	1	3.107.509	61.086.267,94	5.375.591,58	2.856.166	-2.087.857.424	251.343	-183.731.453
08/03/2012	1	0	58.230.101,83	5.124.248,96	0	0	0	0
08/04/2012	1	0	58.230.101,83	5.124.248,96	0	0	0	0
08/05/2012	1	2.985.062	58.230.101,83	5.124.248,96	2.743.624	-1.761.406.289	241.439	-155.003.753
08/06/2012	1	0	55.486.478,33	4.882.810,09	0	0	0	0
08/07/2012	1	0	55.486.478,33	4.882.810,09	0	0	0	0
08/08/2012	1	2.858.639	55.486.478,33	4.882.810,09	2.627.426	-1.445.084.191	231.213	-127.167.409
08/09/2012	1	0	52.859.052,53	4.651.596,62	0	0	0	0
08/10/2012	1	0	52.859.052,53	4.651.596,62	0	0	0	0
08/11/2012	1	2.743.714	52.859.052,53	4.651.596,62	2.662.117	-1.219.249.727	81.597	-37.371.253
08/12/2012	1	0	50.196.935,22	4.570.000,00	0	0	0	0
08/01/2013	1	0	50.196.935,22	4.570.000,00	0	0	0	0
08/02/2013	1	2.630.692	50.196.935,22	4.570.000,00	2.630.692	-962.833.250	0	0
09/03/2013	1	0	47.566.243,28	4.570.000,00	0	0	0	0
09/04/2013	1	0	47.566.243,28	4.570.000,00	0	0	0	0
09/05/2013	1	2.526.223	47.566.243,28	4.570.000,00	2.526.223	-697.237.684	0	0
09/06/2013	1	0	45.040.019,78	4.570.000,00	0	0	0	0
09/07/2013	1	0	45.040.019,78	4.570.000,00	0	0	0	0
09/08/2013	1	2.423.797	45.040.019,78	4.570.000,00	2.423.797	-445.978.636	0	0
09/09/2013	1	0	42.616.222,85	4.570.000,00	0	0	0	0
09/10/2013	1	0	42.616.222,85	4.570.000,00	0	0	0	0
09/11/2013	1	2.328.071	42.616.222,85	4.570.000,00	2.328.071	-214.182.575	0	0
09/12/2013	1	0	40.288.151,38	4.570.000,00	0	0	0	0
09/01/2014	1	0	40.288.151,38	4.570.000,00	0	0	0	0
09/02/2014	1	2.214.949	40.288.151,38	4.570.000,00	2.214.949	0	0	0
09/03/2014	1	0	38.073.202,79	4.570.000,00	0	0	0	0
09/04/2014	1	0	38.073.202,79	4.570.000,00	0	0	0	0
09/05/2014	1	42.643.207	38.073.202,79	4.570.000,00	38.073.203	3.388.515.048	4.570.000	406.730.000