



F.T.H. HIPOTEBANSA X

FRANCISCO FORTES CLAVERO

ANALYST

SANTANDER DE TITULIZACION, S.G.F.T, S.A.

CIUDAD GRUPO SANTANDER

28660 BOADILLA DEL MONTE

ffortes@gruposantander.com

Tel: 912893290



NAME OF THE FUND:

F.T.H. HIPOTEBANSA X

INFORMATION AT:

QUARTER/SEMESTER:

June 18, 2014

-

September 18, 2014

YEAR:

2014

Acting on behalf of Santander de Titulización S.G.F.T., S.A. as General Manager:	Signature:
IGNACIO ORTEGA GAVARA - GENERAL MANAGER	

I. DATA OF THE FUND

Constitution Date	March 04, 2002	Paying Agent	BANCO SANTANDER	
Disbursement Date	March 07, 2002	Negotiation Market	AIAF	
Final Date of Redemption	March 18, 2034	Ratings Agencies	MOODY'S ESPAÑA	
			STANDARD & POORS	
Management Company	SANTANDER DE TITULIZACION, S.G.F.T., S.A.	Rating	Initial	Current
Credit Rights 's Seller	BANCO SANTANDER	CLASS A	Aaa/AAA	ÓaaF/AA
		CLASS B	A2/A	Óaa100

II. SECURITIES ISSUED CHARGED TO THE FUND: SECURITISATION BONDS

CLASS PRIORITY ISIN CODE	NUM BONDS	NOMINAL			
			Initial	Current	%Act/In
CLASS A ES0338356001	8.987	Nominal per Bond	100.000,00	10.523,68	
		Total Nominal	898.700.000,00	94.576.312,16	10,52 %
CLASS B ES0338356019	183	Nominal per Bond	100.000,00	37.581,97	
		Total Nominal	18.300.000,00	6.877.500,51	37,58 %

REDEMPTION AND INTEREST OF THE BONDS					
Current			Next		
Payment Date of the Current Period September 18, 2014			Next Payment Date December 18, 2014		
	Redemption of the Bonds	Gross Interest	Interest Rate	Gross Interest Next Coupon	Net Interest Next Coupon
CLASS A	484,73 €	12,18 €	0,2910 %	7,74 €	6,11 €
CLASS B	261,13 €	74,76 €	0,6310 %	59,94 €	47,35 €
Accrued amortisation due not payed	0,00 €				
Scheduled Amortisation	NO				

III. ASSET PURCHASED BY THE FUND: CREDIT RIGHTS

CREDIT RIGHTS	ISSUE DATE	CURRENT DATE
Numbre of CR's	14.276	3.444
CR's Outstanding to be amortised	917.000.066,55	101.453.837,85
CR's Outstanding per Loan to be amortised	64.233,68	29.458,14
Interest Rate	5,57 %	2,07 %

PREPAYMENT RATE	CURRENT SITUATION
Monthly Single Rate	Í, I J %
Average Monthly Single Rate	F€FG%
Constant Prepayment Rate from Constitution	9,95 %

CURRENT DELINQUENCY	Up to 1 month	From 1 to 6 months	Greater than 6 months
Debt Due (Principal + Interest)	1.565,26	27.053,76	0,00
Debt to be amortised	0,00	0,00	101.429.914,70
Total Debt	1.565,26	27.053,76	101.429.914,70

F.T.H. HIPOTEBANSA X

QUARTERLY BONDS PAYOUT REPORT

September 18, 2014

BONDS. PRINCIPAL	
Previous Balance	105.857.867,97 €
Principal Amortised	4.404.055,30 €
Outstanding Balance	101.453.812,67 €
% of Initial Balance	11,06%
Principal accrued and unpaid	0,00 €

DATA	
Determination Date	September 11, 2014
Payment Date	September 18, 2014
Last Payment Date	June 18, 2014
Number of Days (Act/360)	92
Reference Interest Rate (%)	0,081%
Next Payment Date	December 18, 2014

INTEREST PAID	
CLASS A	109.461,66 €
CLASS B	13.681,08 €
Interest accrued and unpaid	0,00 €

RESIDUAL LIFE (YEARS)		
	INITIAL	September 18, 2014
CLASS A	4,35	0,7
CLASS B	9,41	0,75

F.T.H. HIPOTEBANSA X

QUARTERLY COLLATERAL REPORT

September 18, 2014

PRINCIPAL	
Previous Balance	105.857.863,12 €
Principal Amortised	4.404.025,27 €
Outstanding Balance	101.453.837,85 €
Number of Credit Rights	3.444
LTV	25,04%

INTEREST	
Interest received during relevant period	531.530,23 €
Interest accrued during relevant period	664.628,04 €

PRINCIPAL BALANCE IN ARREARS					
	UP to 30 DAYS	30 to 60 DAYS	60 to 90 DAYS	90 to 180 DAYS	> 180 DAYS
Principal Balance in Arrears	1.470,84 €	7.597,45 €	11.918,52 €	2.936,34 €	0,00 €
Interest accrued on Credit Rights in Arrears	94,42 €	1.880,72 €	2.479,62 €	241,11 €	0,00 €
Outstanding Balance	210.543,46 €	579.664,37 €	506.476,24 €	68.340,39 €	47.972,62 €
Number of Credit Rights	7	14	11	2	2
% of Outstanding Balance	0,21%	0,57%	0,50%	0,07%	0,05%

(1) This report does not include loans in arrears from 1 to 15 days, as it is considered a technical arrear with a high percentage of recovery.

F.T.H. HIPOTEBANSA X**QUARTERLY COLLATERAL REPORT****September 18, 2014**

CONTENTIOUS / JUDICIAL	
Last balance	1.010.259,60 €
Difference in Actual Period	-228.475,14 €
Current balance	781.784,46 €
Contentious CR's number	67

TRANSITORY PROPERTIES	
Last balance	199.782,86 €
Difference in Actual Period	98.500,14 €
Current balance	298.283,00 €
Transitory properties CR's number	4

NET LOSS	
Last balance	131.351,52 €
Difference in Actual Period	-291,16 €
Current balance	131.060,36 €

F.T.H. HIPOTEBANSA X

QUARTERLY REPORT - ALLOCATION OF CASH

September 18, 2014

TOTAL CASH RECEIVED END OF PERIOD	4.870.659,60 €
CASH RECEIVED - PRINCIPAL	
Amortisation of Credit Rights	4.370.789,42 €
CASH RECEIVED - INTEREST	
Interest received from Credit Rights	531.530,23 €
Interest received under GIC	407,83 €
CONTENTIOUS	-72.743,10 €
INCOMES/EXPENSES OF TRANSTORY PROPERTIES	-12.170,86 €
RESERVE FUNDS	52.848,30 €
OTHERS	-2,22 €

TREASURY ACCOUNT STATEMENT	3.051.446,06 €
PRINCIPAL RESERVE FUND	
Previous Balance	1.058.578,63 €
Period utilization	44.040,25 €
Outstanding Balance	1.014.538,38 €
PRINCIPAL RESERVE FUND	
Previous Balance	2.045.715,73 €
Period utilization	8.808,05 €
Outstanding Balance	2.036.907,68 €
WITHHOLDING TAXES	0,00 €
ISSUE EXPENSES WITHHELD	0,00 €
OTHERS	0,00 €

TOTAL CASH PAID END OF PERIOD	4.870.659,60 €
ORDINARY EXPENSES	3.924,03 €
MANAGEMENT FEE	19.425,00 €
SWAP PAYMENT CLASS A	370.569,57 €
SWAP COLLECTION CLASS A	-109.474,40 €
CLASS A INTEREST	109.461,66 €
CLASS A REDEMPTION	4.356.268,51 €
CLASS B REDEMPTION	47.786,79 €
SWAP PAYMENT CLASS B	25.939,89 €
SWAP COLLECTION CLASS B	-13.680,52 €
CLASS B INTEREST	13.681,08 €
SUBORDINATED LOAN A INTEREST	11.430,15 €
SUBORDINATED LOAN B INTEREST	0,00 €
SUBORDINATED LOAN A REDEMPTION	35.327,84 €
SUBORDINATED LOAN B REDEMPTION	0,00 €
ADMINISTRATION FEE	0,00 €
VARIABLE FEE	0,00 €

F.T.H. HIPOTEBANSA X

CREDIT ENHACEMENT AND SUBORDINATED LOAN

September 18, 2014

CREDIT ENHACEMENT			
CONCEPTS	INITIAL	September 18, 2014	
SUBORDINATED ISSUE	2,00 %	6,78%	
PRINCIPAL RESERVE FUND	9.170.000,00 € (1,00 %)	1.014.538,38 €	1,00%
SECONDARY RESERVE FUND	3.668.000,00 € (0,40 %)	2.036.907,68 €	2,01%

SUBORDINATED LOANS		
CONCEPTS	INITIAL	September 18, 2014
SUBORDINATED LOAN A		
Total Outstanding Subordinated Loan	14.046.958,00 €	3.070.692,29 €
Interest Rate	4,660 %	1,468%

F.T.H. HIPOTEBANSA X

TRIGGERS OF THE MODEL

September 18, 2014

BOND's TRIGGERS	
IF 1) IS HIGHER THAN 2) CLASS B IS NOT AMORTISED	
1) CREDIT RIGHTS IN ARREARS OVER 90 DAYS	116.313,01 €
2) 7% CREDIT RIGHTS OUTSTANDING BALANCE	7.101.768,65 €

CLASS B IS AMORTISED. CLASS B HAS REACHED MINIMUM LEVEL OF 6.877.500 EUR

AGREEMENT	COUNTERPARTY	RATING AGENCY	MINIMUM RATING REQUIRED	CURRENT RATING
TREASSURY ACCOOUNT	BANCO SANTANDER	MOODYS S&P	P-1 c/p A-1 c/p A l/p	Baa1 l/p P-2 c/p BBB+ l/p A-2 c/p
SWAP	BANCO SANTANDER	MOODYS S&P	A2 l/p P-1 c/p A- l/p	Baa1 l/p P-2 c/p BBB+ l/p A-2 c/p

COUNTERPARTY DOES NOT HAVE THE MINIMUM RATING REQUIRED. TREASURY ACCOUNT HAS BEEN TRANSFERRED TO A COUNTERPARTY WITH MINIMUM RATING REQUIRED. SWAP DEPOSIT HAS BEEN FUNDED

F.T.H. HIPOTEBANSA X

DEFINITIONS

September 18, 2014

DETERMINATION DATE Means the date in which the Gestora will carry out the necessary calculations, on behalf of the Fund, for the distribution of the available funds at this date, according with the Order of Priority of Payments.
All the information regarding the Assets (Outstanding Balance of the Credit Rights, arrears' tables, transitory properties, stratiphication tables, etc.) are referred to this mentioned date.

NET LOSSES Those loans which the Originator considers that will not recover (net of recoveries).

TRANSITORY PROPERTIES Those assets in the balance of the Fund as a consequence of a judicial or non-judicial process.

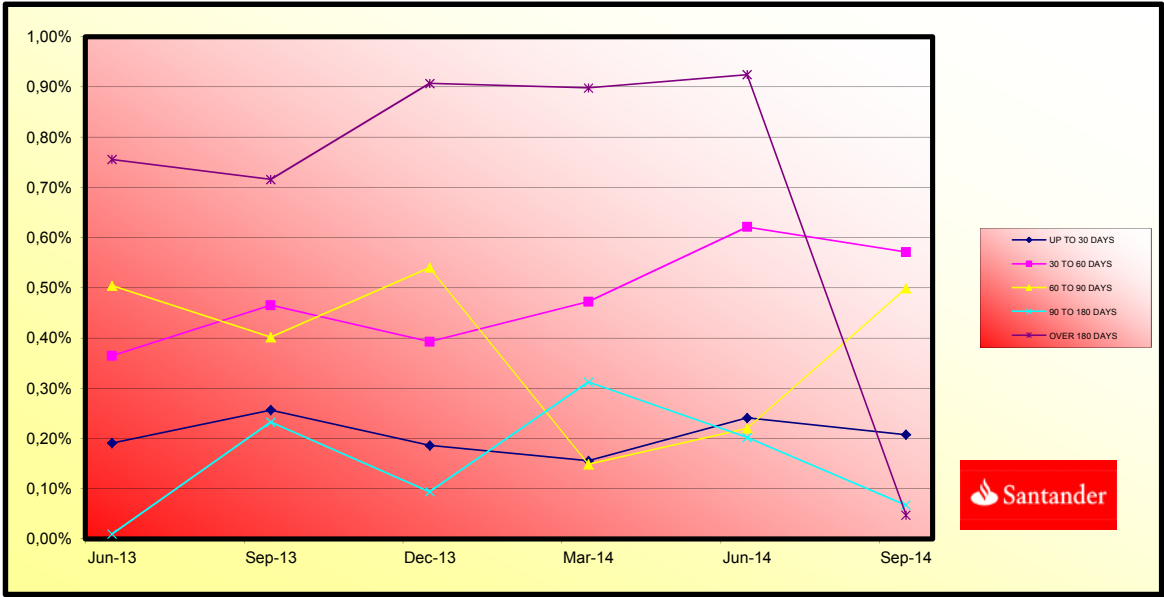
CONTENTIOUS / JUDICIAL Loans in which the Originator will take legal actions. This amount is included in the bucket > 180 days in arrears.



**FONDO DE TITULIZACIÓN DE ACTIVOS
HIPOTEBANSA X**

Report date: September 18th, 2014

ARREARS PERFORMANCE						
	11-Jun-13	11-Sep-13	11-Dec-13	11-Mar-14	11-Jun-14	11-Sep-14
UP TO 30 DAYS	0,19%	0,26%	0,19%	0,16%	0,24%	0,208%
30 TO 60 DAYS	0,36%	0,47%	0,39%	0,47%	0,62%	0,571%
60 TO 90 DAYS	0,50%	0,40%	0,54%	0,15%	0,22%	0,499%
90 TO 180 DAYS	0,01%	0,23%	0,09%	0,31%	0,20%	0,067%
OVER 180 DAYS	0,76%	0,72%	0,91%	0,90%	0,92%	0,047%



PREPAGOS -HIPOTEBANSA X

18-sep-14

Fecha	Balance Teórico 0,166386	Balance Real	0,87% Vector Prepago	Tasa Prepago Mensual desde Inicio	Tasa Prepago Anualizada desde Inicio 10,12%	Tasa Prepago Mensual	Tasa Prepago Mensual Anualizada		
1	917.000.000,00		100,00%	100,00%					
2	914.051.238,01	902.907.626,34	99,13%	98,78%	1,22%	13,69%	1,22%	13,69%	
3	911.088.788,86	890.154.639,86	98,27%	97,70%	1,16%	13,02%	1,09%	12,34%	
4	908.112.589,00	880.892.526,40	97,41%	97,00%	1,01%	11,46%	0,72%	8,26%	
5	905.123.839,60	869.332.197,68	96,57%	96,05%	1,00%	11,40%	0,99%	11,22%	
6	902.121.217,43	859.491.890,58	95,73%	95,27%	0,96%	10,97%	0,80%	9,22%	
7	899.104.658,08	851.058.890,36	94,89%	94,66%	0,91%	10,40%	0,65%	7,52%	
8	896.074.096,87	841.285.243,08	94,07%	93,89%	0,90%	10,25%	0,81%	9,34%	
9	893.029.468,80	832.131.966,74	93,25%	93,18%	0,88%	10,05%	0,75%	8,65%	
10	889.970.708,59	822.023.405,27	92,44%	92,37%	0,88%	10,05%	0,88%	10,01%	
11	1-ene-03	886.899.610,85	810.027.297,96	91,63%	91,33%	0,90%	10,31%	1,12%	12,62%
12	1-feb-03	883.814.258,11	801.043.118,49	90,84%	90,63%	0,89%	10,17%	0,76%	8,79%
13	1-mar-03	880.714.584,18	792.833.367,84	90,05%	90,02%	0,87%	9,98%	0,68%	7,82%
14	1-abr-03	877.600.522,61	782.569.617,37	89,26%	89,17%	0,88%	10,04%	0,94%	10,76%
15	1-may-03	874.472.006,59	777.414.915,92	88,49%	88,90%	0,84%	9,59%	0,30%	3,58%
16	1-jun-03	871.328.969,05	763.569.938,46	87,72%	87,63%	0,88%	10,02%	1,43%	15,84%
17	1-jul-03	868.177.587,15	753.062.767,91	86,95%	86,74%	0,89%	10,12%	1,02%	11,56%
18	1-ago-03	865.011.577,58	740.400.511,46	86,20%	85,59%	0,91%	10,40%	1,32%	14,76%
19	1-sep-03	861.830.872,46	730.693.726,24	85,45%	84,78%	0,91%	10,42%	0,95%	10,79%
20	1-oct-03	858.635.403,56	717.375.382,95	84,70%	83,55%	0,94%	10,73%	1,46%	16,15%
21	1-nov-03	855.425.102,36	702.361.237,98	83,97%	82,11%	0,98%	11,16%	1,73%	18,85%
22	1-dic-03	852.199.900,01	689.319.019,25	83,24%	80,89%	1,00%	11,42%	1,49%	16,44%
23	1-ene-04	848.973.670,82	676.926.186,29	82,51%	79,73%	1,02%	11,62%	1,42%	15,82%
24	1-feb-04	845.732.466,56	666.509.277,54	81,80%	78,81%	1,03%	11,68%	1,16%	13,08%
25	1-mar-04	842.476.217,70	657.731.166,30	81,08%	78,07%	1,03%	11,64%	0,94%	10,67%
26	1-abr-04	839.204.854,42	644.603.859,65	80,38%	76,81%	1,05%	11,89%	1,61%	17,74%
27	1-may-04	835.918.306,57	635.093.194,16	79,68%	75,98%	1,05%	11,91%	1,09%	12,30%
28	1-jun-04	832.616.503,65	627.050.897,34	78,99%	75,31%	1,04%	11,84%	0,87%	10,01%
29	1-jul-04	829.312.946,33	615.244.852,93	78,30%	74,19%	1,06%	12,01%	1,49%	16,50%
30	1-ago-04	825.994.055,00	604.894.935,99	77,62%	73,23%	1,07%	12,09%	1,29%	14,40%
31	1-sep-04	822.659.758,48	572.180.148,60	76,94%	69,55%	1,20%	13,52%	5,02%	46,13%
32	1-oct-04	819.309.985,26	562.399.338,00	76,27%	68,64%	1,21%	13,55%	1,31%	14,61%
33	1-nov-04	815.944.663,52	553.054.228,84	75,61%	67,78%	1,21%	13,57%	1,26%	14,07%
34	1-dic-04	812.563.721,08	543.620.997,39	74,95%	66,90%	1,21%	13,60%	1,30%	14,50%
35	1-ene-05	809.190.318,92	530.939.482,41	74,30%	65,61%	1,23%	13,82%	1,93%	20,81%
36	1-feb-05	805.801.258,56	521.505.382,83	73,65%	64,72%	1,24%	13,86%	1,36%	15,19%
37	1-mar-05	802.396.467,32	513.337.300,73	73,01%	63,98%	1,23%	13,83%	1,15%	12,94%
38	1-abr-05	798.975.872,16	505.464.441,61	72,38%	63,26%	1,23%	13,80%	1,11%	12,56%
39	1-may-05	795.539.399,74	494.636.640,32	71,75%	62,18%	1,24%	13,93%	1,72%	18,79%
40	1-jun-05	792.086.976,37	484.288.743,29	71,12%	61,14%	1,25%	14,05%	1,67%	18,25%
41	1-jul-05	788.648.823,17	475.111.533,01	70,51%	60,24%	1,26%	14,10%	1,47%	16,25%
42	1-ago-05	785.194.711,21	466.804.454,53	69,89%	59,45%	1,26%	14,12%	1,32%	14,70%
43	1-sep-05	781.724.566,41	461.752.924,62	69,28%	59,07%	1,25%	13,97%	0,64%	7,45%
44	1-oct-05	778.238.314,35	454.431.330,85	68,68%	58,39%	1,24%	13,94%	1,14%	12,90%
45	1-nov-05	774.735.880,28	446.092.808,14	68,08%	57,58%	1,25%	13,98%	1,39%	15,47%
46	1-dic-05	771.217.189,08	437.657.141,61	67,49%	56,75%	1,25%	14,02%	1,44%	16,01%
47	1-ene-06	767.705.836,63	427.609.446,30	66,91%	55,70%	1,26%	14,16%	1,85%	20,06%
48	1-feb-06	764.178.185,66	420.381.426,81	66,32%	55,01%	1,26%	14,15%	1,24%	13,87%
49	1-mar-06	760.634.160,51	413.595.736,60	65,75%	54,38%	1,26%	14,13%	1,16%	13,02%
50	1-abr-06	757.073.685,18	406.186.992,01	65,17%	53,65%	1,26%	14,14%	1,33%	14,84%
51	1-may-06	753.496.683,30	399.504.359,17	64,61%	53,02%	1,26%	14,13%	1,18%	13,26%
52	1-jun-06	749.903.078,18	392.379.303,86	64,05%	52,32%	1,26%	14,14%	1,31%	14,66%
53	1-jul-06	746.318.997,85	385.629.856,25	63,49%	51,67%	1,26%	14,13%	1,25%	13,99%
54	1-ago-06	742.718.281,41	378.462.793,09	62,94%	50,96%	1,26%	14,16%	1,38%	15,39%
55	1-sep-06	739.100.851,65	374.805.632,94	62,39%	50,71%	1,25%	14,01%	0,48%	5,63%
56	1-oct-06	735.466.630,99	368.714.578,57	61,85%	50,13%	1,25%	13,99%	1,14%	12,84%
57	1-nov-06	731.815.541,48	363.303.830,90	61,31%	49,64%	1,24%	13,93%	0,98%	11,10%
58	1-dic-06	728.147.504,84	357.755.940,18	60,77%	49,13%	1,24%	13,90%	1,03%	11,69%
59	1-ene-07	724.498.421,62	349.986.397,02	60,25%	48,31%	1,25%	13,98%	1,68%	18,39%
60	1-feb-07	720.832.400,59	343.637.487,31	59,72%	47,67%	1,25%	13,99%	1,31%	14,68%
61	1-mar-07	717.149.363,10	338.632.689,75	59,20%	47,22%	1,24%	13,94%	0,95%	10,83%
62	1-abr-07	713.449.230,18	334.334.773,79	58,69%	46,86%	1,23%	13,85%	0,76%	8,72%
63	1-may-07	709.731.922,48	328.566.147,99	58,18%	46,29%	1,23%	13,85%	1,21%	13,60%
64	1-jun-07	705.997.360,27	323.831.652,27	57,67%	45,87%	1,23%	13,80%	0,92%	10,49%
65	1-jul-07	702.276.916,27	317.422.711,80	57,17%	45,20%	1,23%	13,83%	1,46%	16,18%
66	1-ago-07	698.539.203,20	313.068.279,93	56,67%	44,82%	1,23%	13,77%	0,84%	9,67%
67	1-sep-07	694.784.140,91	309.903.729,44	56,18%	44,60%	1,22%	13,65%	0,48%	5,56%
68	1-oct-07	691.011.648,88	306.844.430,83	55,69%	44,41%	1,20%	13,53%	0,45%	5,23%
69	1-nov-07	687.221.646,19	302.953.643,62	55,21%	44,08%	1,20%	13,46%	0,72%	8,34%
70	1-dic-07	683.414.051,58	300.240.796,83	54,73%	43,93%	1,18%	13,33%	0,34%	4,04%
71	1-ene-08	679.654.390,30	290.685.227,82	54,25%	42,77%	1,21%	13,55%	2,65%	27,52%
72	1-feb-08	675.877.277,93	287.175.817,36	53,78%	42,49%	1,20%	13,47%	0,66%	7,59%
73	1-mar-08	672.082.633,46	284.295.478,55	53,31%	42,30%	1,19%	13,36%	0,44%	5,20%

74	1-abr-08	668.270.375,51	279.959.571,85	52,85%	41,89%	1,18%	13,33%	0,96%	10,97%
75	1-may-08	664.440.422,34	277.116.950,87	52,39%	41,71%	1,17%	13,22%	0,44%	5,21%
76	1-jun-08	660.592.691,80	273.736.785,58	51,93%	41,44%	1,17%	13,15%	0,64%	7,46%
77	1-jul-08	656.784.093,55	269.287.703,97	51,48%	41,00%	1,17%	13,13%	1,05%	11,95%
78	1-ago-08	652.957.817,05	265.480.611,09	51,03%	40,66%	1,16%	13,09%	0,84%	9,58%
79	1-sep-08	649.113.780,26	262.934.156,67	50,59%	40,51%	1,15%	12,98%	0,37%	4,38%
80	1-oct-08	645.251.900,73	257.017.816,26	50,15%	39,83%	1,16%	13,05%	1,67%	18,25%
81	1-nov-08	641.372.095,64	253.796.965,14	49,71%	39,57%	1,15%	12,98%	0,66%	7,59%
82	1-dic-08	637.474.281,79	253.034.979,81	49,28%	39,69%	1,13%	12,79%	-0,31%	-3,78%
83	1-ene-09	633.619.665,84	248.984.122,55	48,85%	39,30%	1,13%	12,78%	1,00%	11,39%
84	1-feb-09	629.747.158,05	245.892.346,76	48,43%	39,05%	1,13%	12,71%	0,63%	7,35%
85	1-mar-09	625.856.675,37	242.721.714,83	48,00%	38,78%	1,12%	12,66%	0,68%	7,82%
86	1-abr-09	621.948.134,36	239.660.002,37	47,59%	38,53%	1,12%	12,60%	0,64%	7,43%
87	1-may-09	618.021.451,21	236.929.494,08	47,17%	38,34%	1,11%	12,52%	0,51%	5,96%
88	1-jun-09	614.076.541,71	233.591.701,40	46,76%	38,04%	1,10%	12,48%	0,78%	8,92%
89	1-jul-09	610.215.446,79	230.919.275,33	46,36%	37,84%	1,10%	12,41%	0,52%	6,05%
90	1-ago-09	606.336.429,95	227.722.901,60	45,95%	37,56%	1,09%	12,37%	0,75%	8,67%
91	1-sep-09	602.439.408,00	224.965.948,55	45,55%	37,34%	1,09%	12,31%	0,57%	6,65%
92	1-oct-09	598.524.297,39	222.134.700,04	45,16%	37,11%	1,08%	12,25%	0,61%	7,11%
93	1-nov-09	594.591.014,13	218.071.313,12	44,76%	36,68%	1,08%	12,26%	1,18%	13,27%
94	1-dic-09	590.639.473,88	214.612.275,19	44,37%	36,34%	1,08%	12,25%	0,93%	10,58%
95	1-ene-10	586.831.116,90	210.991.830,11	43,99%	35,95%	1,08%	12,24%	1,05%	11,89%
96	1-feb-10	583.005.082,80	208.536.251,89	43,61%	35,77%	1,08%	12,18%	0,52%	6,01%
97	1-mar-10	579.161.289,52	205.823.790,41	43,23%	35,54%	1,07%	12,13%	0,65%	7,48%
98	1-abr-10	575.299.654,63	202.985.015,60	42,85%	35,28%	1,07%	12,09%	0,72%	8,28%
99	1-may-10	571.420.095,33	200.283.375,02	42,48%	35,05%	1,06%	12,05%	0,66%	7,65%
100	1-jun-10	567.522.528,40	197.884.880,95	42,11%	34,87%	1,06%	11,99%	0,52%	6,05%
101	1-jul-10	563.791.776,67	195.422.088,83	41,74%	34,66%	1,05%	11,94%	0,59%	6,87%
102	1-ago-10	560.043.708,04	193.029.799,42	41,38%	34,47%	1,05%	11,89%	0,56%	6,55%
103	1-sep-10	556.278.242,12	191.139.348,40	41,02%	34,36%	1,04%	11,81%	0,31%	3,65%
104	1-oct-10	552.495.298,16	189.144.901,93	40,66%	34,23%	1,04%	11,74%	0,37%	4,30%
105	1-nov-10	548.694.795,04	186.777.449,25	40,31%	34,04%	1,03%	11,69%	0,57%	6,60%
106	1-dic-10	544.876.651,25	184.528.318,10	39,96%	33,87%	1,03%	11,64%	0,51%	5,97%
107	1-ene-11	541.173.390,47	181.748.346,38	39,61%	33,58%	1,02%	11,62%	0,83%	9,55%
108	1-feb-11	537.452.940,38	179.635.592,90	39,27%	33,42%	1,02%	11,57%	0,48%	5,59%
109	1-mar-11	533.715.221,20	177.874.970,78	38,92%	33,33%	1,01%	11,49%	0,29%	3,39%
110	1-abr-11	529.960.152,78	175.729.075,10	38,59%	33,16%	1,01%	11,44%	0,51%	5,91%
111	1-may-11	526.187.654,58	173.869.118,62	38,25%	33,04%	1,00%	11,38%	0,35%	4,11%
112	1-jun-11	522.397.645,70	171.883.097,35	37,92%	32,90%	1,00%	11,32%	0,43%	4,98%
113	1-jul-11	518.661.127,89	169.703.951,56	37,59%	32,72%	0,99%	11,28%	0,56%	6,48%
114	1-ago-11	514.907.266,42	167.777.936,36	37,26%	32,58%	0,99%	11,23%	0,41%	4,86%
115	1-sep-11	511.135.980,76	165.849.483,75	36,94%	32,45%	0,98%	11,17%	0,42%	4,93%
116	1-oct-11	507.347.190,06	164.007.691,13	36,61%	32,33%	0,98%	11,12%	0,37%	4,37%
117	1-nov-11	503.540.813,05	162.003.586,19	36,30%	32,17%	0,97%	11,07%	0,48%	5,56%
118	1-dic-11	499.716.768,11	159.836.576,49	35,98%	31,99%	0,97%	11,03%	0,58%	6,77%
119	1-ene-12	495.985.493,72	157.063.492,09	35,67%	31,67%	0,97%	11,04%	1,00%	11,32%
120	1-feb-12	492.236.899,99	154.933.434,94	35,36%	31,48%	0,97%	11,00%	0,60%	7,02%
121	1-mar-12	488.470.906,55	152.694.101,29	35,05%	31,26%	0,96%	10,98%	0,69%	7,92%
122	1-abr-12	484.687.432,61	150.897.774,57	34,74%	31,13%	0,96%	10,93%	0,41%	4,75%
123	1-may-12	480.886.397,05	149.202.407,51	34,44%	31,03%	0,95%	10,87%	0,34%	4,03%
124	1-jun-12	477.067.718,35	147.150.529,29	34,14%	30,84%	0,95%	10,84%	0,59%	6,81%
125	1-jul-12	473.345.910,45	145.302.427,35	33,85%	30,70%	0,95%	10,80%	0,48%	5,60%
126	1-ago-12	469.606.827,15	143.274.257,68	33,55%	30,51%	0,95%	10,77%	0,61%	7,09%
127	1-sep-12	465.850.388,28	141.476.162,69	33,26%	30,37%	0,94%	10,73%	0,46%	5,37%
128	1-oct-12	462.076.513,27	139.527.123,44	32,97%	30,20%	0,94%	10,70%	0,57%	6,65%
129	1-nov-12	458.285.121,19	137.867.693,39	32,68%	30,08%	0,93%	10,65%	0,37%	4,37%
130	1-dic-12	454.476.130,73	135.715.274,76	32,40%	29,86%	0,93%	10,63%	0,74%	8,49%
131	1-ene-13	450.774.160,87	132.499.359,35	32,12%	29,39%	0,94%	10,69%	1,57%	17,27%
132	1-feb-13	447.055.007,70	131.024.303,23	31,84%	29,31%	0,93%	10,63%	0,29%	3,43%
133	1-mar-13	443.318.591,46	130.088.549,26	31,56%	29,34%	0,92%	10,55%	-0,12%	-1,48%
134	1-abr-13	439.564.832,02	128.324.835,59	31,29%	29,19%	0,92%	10,51%	0,51%	5,99%
135	1-may-13	435.793.648,89	126.679.256,04	31,01%	29,07%	0,92%	10,47%	0,43%	5,02%
136	1-jun-13	432.004.961,17	124.681.945,12	30,74%	28,86%	0,92%	10,46%	0,71%	8,23%
137	1-jul-13	428.299.061,99	123.171.392,82	30,48%	28,76%	0,91%	10,41%	0,36%	4,20%
138	1-ago-13	424.575.961,25	121.526.496,54	30,21%	28,62%	0,91%	10,38%	0,47%	5,50%
139	1-sep-13	420.835.579,12	120.110.184,13	29,95%	28,54%	0,90%	10,33%	0,29%	3,39%
140	1-oct-13	417.077.835,39	118.707.810,79	29,69%	28,46%	0,90%	10,28%	0,28%	3,28%
141	1-nov-13	413.302.649,46	117.251.426,92	29,43%	28,37%	0,90%	10,24%	0,32%	3,83%
142	1-dic-13	409.509.940,38	115.699.582,85	29,17%	28,25%	0,89%	10,20%	0,41%	4,81%
143	1-ene-14	405.811.742,25	113.828.660,39	28,92%	28,05%	0,89%	10,19%	0,72%	8,31%
144	1-feb-14	402.096.378,32	112.074.979,25	28,67%	27,87%	0,89%	10,17%	0,63%	7,31%
145	1-mar-14	398.363.768,91	110.338.556,59	28,42%	27,70%	0,89%	10,15%	0,63%	7,27%
146	1-abr-14	394.613.833,97	108.906.105,55	28,17%	27,60%	0,88%	10,11%	0,36%	4,24%
147	1-may-14	390.846.493,08	107.445.653,08	27,93%	27,49%	0,88%	10,07%	0,39%	4,58%
148	1-jun-14	387.061.665,45	105.857.863,12	27,68%	27,35%	0,88%	10,04%	0,51%	6,00%
149	1-jul-14	383.456.535,38	104.193.806,22	27,44%	27,17%	0,88%	10,03%	0,65%	7,49%
150	1-ago-14	379.834.671,50	102.918.481,84	27,20%	27,10%	0,87%	9,98%	0,28%	3,33%
151	1-sep-14	376.195.996,13	101.453.837,85	26,97%	26,97%	0,87%	9,95%	0,47%	5,49%

DEAL 917.000.000,000
 MEZZ. DECLINN 7,00%
 MEZZ. STOPS DECLINN 0,75% 6.877.500,00
 VIDA RESIDUAL DESDE 18-sep-14

0,70

0,75

FECHA	Principal disponible para la amortización	SERIE A	SERIE B	SERIE A		SERIE B	
				PRINCIPAL	VIDA MEDIA	PRINCIPAL	VIDA MEDIA
18-abr-02	0,00	898.700.000,00	18.300.000,00	0,00	0,00	0,00	0,00
18-may-02	1 0,00	898.700.000,00	18.300.000,00	0,00	0,00	0,00	0,00
18-jun-02	1 36.107.473,60	898.700.000,00	18.300.000,00	36.107.473,60	-161.580.944.360,00	0,00	0,00
18-jul-02	1 0,00	862.592.526,40	18.300.000,00	0,00	0,00	0,00	0,00
18-ago-02	1 0,00	862.592.526,40	18.300.000,00	0,00	0,00	0,00	0,00
18-sep-02	1 29.833.636,04	862.592.526,40	18.300.000,00	29.833.636,04	-130.760.826.763,32	0,00	0,00
18-oct-02	1 0,00	832.758.890,36	18.300.000,00	0,00	0,00	0,00	0,00
18-nov-02	1 0,00	832.758.890,36	18.300.000,00	0,00	0,00	0,00	0,00
18-dic-02	1 29.035.485,09	832.758.890,36	18.300.000,00	29.035.485,09	-124.620.302.006,28	0,00	0,00
18-ene-03	1 0,00	803.723.405,27	18.300.000,00	0,00	0,00	0,00	0,00
18-feb-03	1 0,00	803.723.405,27	18.300.000,00	0,00	0,00	0,00	0,00
18-mar-03	1 29.190.037,43	803.723.405,27	18.300.000,00	29.190.037,43	-122.656.537.280,86	0,00	0,00
18-abr-03	1 0,00	774.533.367,84	18.300.000,00	0,00	0,00	0,00	0,00
18-may-03	1 0,00	774.533.367,84	18.300.000,00	0,00	0,00	0,00	0,00
18-jun-03	1 29.263.429,38	774.533.367,84	18.300.000,00	29.263.429,38	-120.272.694.751,80	0,00	0,00
18-jul-03	1 0,00	745.269.938,46	18.300.000,00	0,00	0,00	0,00	0,00
18-ago-03	1 0,00	745.269.938,46	18.300.000,00	0,00	0,00	0,00	0,00
18-sep-03	1 32.876.212,22	745.269.938,46	18.300.000,00	32.876.212,22	-132.096.620.699,96	0,00	0,00
18-oct-03	1 0,00	712.393.726,24	18.300.000,00	0,00	0,00	0,00	0,00
18-nov-03	1 0,00	712.393.726,24	18.300.000,00	0,00	0,00	0,00	0,00
18-dic-03	1 41.374.706,99	712.393.726,24	18.300.000,00	41.374.706,99	-162.478.474.349,73	0,00	0,00
18-ene-04	1 0,00	671.019.019,25	18.300.000,00	0,00	0,00	0,00	0,00
18-feb-04	1 0,00	671.019.019,25	18.300.000,00	0,00	0,00	0,00	0,00
18-mar-04	1 31.587.852,95	671.019.019,25	18.300.000,00	31.587.852,95	-121.171.003.916,20	0,00	0,00
18-abr-04	1 0,00	639.431.166,30	18.300.000,00	0,00	0,00	0,00	0,00
18-may-04	1 0,00	639.431.166,30	18.300.000,00	0,00	0,00	0,00	0,00
18-jun-04	1 30.680.268,96	639.431.166,30	18.300.000,00	30.680.268,96	-114.866.926.986,24	0,00	0,00
18-jul-04	1 0,00	608.750.897,34	18.300.000,00	0,00	0,00	0,00	0,00
18-ago-04	1 0,00	608.750.897,34	18.300.000,00	0,00	0,00	0,00	0,00
18-sep-04	1 54.870.748,74	608.750.897,34	18.300.000,00	54.870.748,74	-200.387.974.398,48	0,00	0,00
18-oct-04	1 0,00	553.880.148,60	18.300.000,00	0,00	0,00	0,00	0,00
18-nov-04	1 0,00	553.880.148,60	18.300.000,00	0,00	0,00	0,00	0,00
18-dic-04	1 28.559.151,21	553.880.148,60	18.300.000,00	28.559.151,21	-101.699.137.458,81	0,00	0,00
18-ene-05	1 0,00	525.320.997,39	18.300.000,00	0,00	0,00	0,00	0,00
18-feb-05	1 0,00	525.320.997,39	18.300.000,00	0,00	0,00	0,00	0,00
18-mar-05	1 30.283.696,66	525.320.997,39	18.300.000,00	30.283.696,66	-105.114.711.106,86	0,00	0,00
18-abr-05	1 0,00	495.037.300,73	18.300.000,00	0,00	0,00	0,00	0,00
18-may-05	1 0,00	495.037.300,73	18.300.000,00	0,00	0,00	0,00	0,00
18-jun-05	1 29.048.557,44	495.037.300,73	18.300.000,00	29.048.557,44	-98.155.075.589,76	0,00	0,00
18-jul-05	1 0,00	465.988.743,29	18.300.000,00	0,00	0,00	0,00	0,00
18-ago-05	1 0,00	465.988.743,29	18.300.000,00	0,00	0,00	0,00	0,00
18-sep-05	1 22.535.818,67	465.988.743,29	18.300.000,00	22.535.818,67	-74.075.235.968,29	0,00	0,00
18-oct-05	1 0,00	443.452.924,62	18.300.000,00	0,00	0,00	0,00	0,00
18-nov-05	1 0,00	443.452.924,62	18.300.000,00	0,00	0,00	0,00	0,00
18-dic-05	1 24.095.783,01	443.452.924,62	18.300.000,00	24.095.783,01	-77.010.122.499,96	0,00	0,00
18-ene-06	1 0,00	419.357.141,61	18.300.000,00	0,00	0,00	0,00	0,00
18-feb-06	1 0,00	419.357.141,61	18.300.000,00	0,00	0,00	0,00	0,00
18-mar-06	1 24.061.405,01	419.357.141,61	18.300.000,00	24.061.405,01	-74.734.723.961,06	0,00	0,00
18-abr-06	1 0,00	395.295.736,60	18.300.000,00	0,00	0,00	0,00	0,00
18-may-06	1 0,00	395.295.736,60	18.300.000,00	0,00	0,00	0,00	0,00
18-jun-06	1 21.216.432,74	395.295.736,60	18.300.000,00	21.216.432,74	-63.946.328.278,36	0,00	0,00
18-jul-06	1 0,00	374.079.303,86	18.300.000,00	0,00	0,00	0,00	0,00
18-ago-06	1 0,00	374.079.303,86	18.300.000,00	0,00	0,00	0,00	0,00
18-sep-06	1 17.573.670,92	374.079.303,86	18.300.000,00	17.573.670,92	-51.350.266.428,24	0,00	0,00
18-oct-06	1 0,00	356.505.632,94	18.300.000,00	0,00	0,00	0,00	0,00
18-nov-06	1 0,00	356.505.632,94	18.300.000,00	0,00	0,00	0,00	0,00
18-dic-06	1 17.049.692,76	356.505.632,94	18.300.000,00	17.049.692,76	-48.267.680.203,56	0,00	0,00
18-ene-07	1 0,00	339.455.940,18	18.300.000,00	0,00	0,00	0,00	0,00
18-feb-07	1 0,00	339.455.940,18	18.300.000,00	0,00	0,00	0,00	0,00
18-mar-07	1 19.123.250,43	339.455.940,18	18.300.000,00	19.123.250,43	-52.416.829.428,63	0,00	0,00
18-abr-07	1 0,00	320.332.689,75	18.300.000,00	0,00	0,00	0,00	0,00
18-may-07	1 0,00	320.332.689,75	18.300.000,00	0,00	0,00	0,00	0,00
18-jun-07	1 14.801.037,48	320.332.689,75	18.300.000,00	14.801.037,48	-39.207.948.284,52	0,00	0,00
18-jul-07	1 0,00	305.531.652,27	18.300.000,00	0,00	0,00	0,00	0,00
18-ago-07	1 0,00	305.531.652,27	18.300.000,00	0,00	0,00	0,00	0,00
18-sep-07	1 13.927.922,83	305.531.652,27	18.300.000,00	13.927.922,83	-35.613.698.676,31	0,00	0,00
18-oct-07	1 0,00	291.603.729,44	18.300.000,00	0,00	0,00	0,00	0,00
18-nov-07	1 0,00	291.603.729,44	18.300.000,00	0,00	0,00	0,00	0,00
18-dic-07	1 9.662.932,61	291.603.729,44	18.300.000,00	9.662.932,61	-23.828.791.816,26	0,00	0,00
18-ene-08	1 0,00	281.940.796,83	18.300.000,00	0,00	0,00	0,00	0,00
18-feb-08	1 0,00	281.940.796,83	18.300.000,00	0,00	0,00	0,00	0,00
18-mar-08	1 15.945.318,28	281.940.796,83	18.300.000,00	15.945.318,28	-37.870.130.915,00	0,00	0,00
18-abr-08	1 0,00	265.995.478,55	18.300.000,00	0,00	0,00	0,00	0,00
18-may-08	1 0,00	265.995.478,55	18.300.000,00	0,00	0,00	0,00	0,00

DEAL
 MEZZ. DECLINN
 MEZZ. STOPS DECLINN
 VIDA RESIDUAL DESDE

917.000.000,000
 7,00%
 0,75% 6.877.500,00
 18-sep-14

0,70 0,75

		SERIE A			SERIE B			
Principal		PRINCIPAL	VIDA	PRINCIPAL	VIDA	PRINCIPAL	VIDA	
18-jun-08	1	10.558.692,97	265.995.478,55	18.300.000,00	10.166.706,98	-23.210.592.035,13	391.985,99	-894.904.015,38
18-jul-08	1	0,00	255.828.771,57	17.908.014,01	0,00	0,00	0,00	0,00
18-ago-08	1	0,00	255.828.771,57	17.908.014,01	0,00	0,00	0,00	0,00
18-sep-08	1	10.802.628,91	255.828.771,57	17.908.014,01	10.095.914,87	-22.120.149.478,33	706.714,04	-1.548.410.463,48
18-oct-08	1	0,00	245.732.856,70	17.201.299,97	0,00	0,00	0,00	0,00
18-nov-08	1	0,00	245.732.856,70	17.201.299,97	0,00	0,00	0,00	0,00
18-dic-08	1	9.899.176,86	245.732.856,70	17.201.299,97	9.251.567,16	-19.428.291.033,64	647.609,70	-1.359.980.372,36
18-ene-09	1	0,00	236.481.289,54	16.553.690,27	0,00	0,00	0,00	0,00
18-feb-09	1	0,00	236.481.289,54	16.553.690,27	0,00	0,00	0,00	0,00
18-mar-09	1	10.313.264,98	236.481.289,54	16.553.690,27	9.638.565,40	-19.373.516.457,76	674.699,58	-1.356.146.152,04
18-abr-09	1	0,00	226.842.724,14	15.878.990,69	0,00	0,00	0,00	0,00
18-may-09	1	0,00	226.842.724,14	15.878.990,69	0,00	0,00	0,00	0,00
18-jun-09	1	9.130.013,43	226.842.724,14	15.878.990,69	8.532.722,83	-16.365.762.391,35	597.290,60	-1.145.603.367,39
18-jul-09	1	0,00	218.310.001,31	15.281.700,09	0,00	0,00	0,00	0,00
18-ago-09	1	0,00	218.310.001,31	15.281.700,09	0,00	0,00	0,00	0,00
18-sep-09	1	8.625.752,85	218.310.001,31	15.281.700,09	8.061.451,26	-14.720.210.003,83	564.301,59	-1.030.414.700,27
18-oct-09	1	0,00	210.248.550,05	14.717.398,50	0,00	0,00	0,00	0,00
18-nov-09	1	0,00	210.248.550,05	14.717.398,50	0,00	0,00	0,00	0,00
18-dic-09	1	10.353.673,36	210.248.550,05	14.717.398,50	9.676.330,24	-16.788.432.971,59	677.343,12	-1.175.190.308,01
18-ene-10	1	0,00	200.572.219,80	14.040.055,39	0,00	0,00	0,00	0,00
18-feb-10	1	0,00	200.572.219,80	14.040.055,39	0,00	0,00	0,00	0,00
18-mar-10	1	8.788.484,78	200.572.219,80	14.040.055,39	8.213.537,18	-13.511.268.657,10	574.947,60	-945.788.806,00
18-abr-10	1	0,00	192.358.682,63	13.465.107,78	0,00	0,00	0,00	0,00
18-may-10	1	0,00	192.358.682,63	13.465.107,78	0,00	0,00	0,00	0,00
18-jun-10	1	7.938.909,46	192.358.682,63	13.465.107,78	7.419.541,55	-11.522.548.029,33	519.367,91	-806.578.362,05
18-jul-10	1	0,00	184.939.141,07	12.945.739,88	0,00	0,00	0,00	0,00
18-ago-10	1	0,00	184.939.141,07	12.945.739,88	0,00	0,00	0,00	0,00
18-sep-10	1	6.745.532,55	184.939.141,07	12.945.739,88	6.304.236,03	-9.210.488.836,96	441.296,52	-644.734.218,59
18-oct-10	1	0,00	178.634.905,05	12.504.443,35	0,00	0,00	0,00	0,00
18-nov-10	1	0,00	178.634.905,05	12.504.443,35	0,00	0,00	0,00	0,00
18-dic-10	1	6.611.030,30	178.634.905,05	12.504.443,35	6.178.532,99	-8.464.590.197,20	432.497,31	-592.521.313,80
18-ene-11	1	0,00	172.456.372,06	12.071.946,04	0,00	0,00	0,00	0,00
18-feb-11	1	0,00	172.456.372,06	12.071.946,04	0,00	0,00	0,00	0,00
18-mar-11	1	6.653.347,32	172.456.372,06	12.071.946,04	6.218.081,61	-7.959.144.457,57	435.265,71	-557.140.112,03
18-abr-11	1	0,00	166.238.290,45	11.636.680,33	0,00	0,00	0,00	0,00
18-may-11	1	0,00	166.238.290,45	11.636.680,33	0,00	0,00	0,00	0,00
18-jun-11	1	5.991.873,43	166.238.290,45	11.636.680,33	5.599.881,71	-6.652.659.471,81	391.991,72	-465.686.163,03
18-jul-11	1	0,00	160.638.408,74	11.244.688,61	0,00	0,00	0,00	0,00
18-ago-11	1	0,00	160.638.408,74	11.244.688,61	0,00	0,00	0,00	0,00
18-sep-11	1	6.033.613,60	160.638.408,74	11.244.688,61	5.638.891,21	-6.180.224.771,59	394.722,39	-432.615.734,01
18-oct-11	1	0,00	154.999.517,52	10.849.966,23	0,00	0,00	0,00	0,00
18-nov-11	1	0,00	154.999.517,52	10.849.966,23	0,00	0,00	0,00	0,00
18-dic-11	1	6.012.907,26	154.999.517,52	10.849.966,23	5.619.539,50	-5.647.637.192,80	393.367,76	-395.334.603,50
18-ene-12	1	0,00	149.379.978,03	10.456.598,46	0,00	0,00	0,00	0,00
18-feb-12	1	0,00	149.379.978,03	10.456.598,46	0,00	0,00	0,00	0,00
18-mar-12	1	7.142.475,20	149.379.978,03	10.456.598,46	6.675.210,47	-6.101.142.367,10	467.264,73	-427.079.965,70
18-abr-12	1	0,00	142.704.767,56	9.989.333,73	0,00	0,00	0,00	0,00
18-may-12	1	0,00	142.704.767,56	9.989.333,73	0,00	0,00	0,00	0,00
18-jun-12	1	5.543.572,00	142.704.767,56	9.989.333,73	5.180.908,41	-4.258.706.714,02	362.663,59	-298.109.469,98
18-jul-12	1	0,00	137.523.859,15	9.626.670,14	0,00	0,00	0,00	0,00
18-ago-12	1	0,00	137.523.859,15	9.626.670,14	0,00	0,00	0,00	0,00
18-sep-12	1	5.674.366,60	137.523.859,15	9.626.670,14	5.303.146,36	-3.871.296.839,25	371.220,24	-270.990.778,75
18-oct-12	1	0,00	132.220.712,79	9.255.449,90	0,00	0,00	0,00	0,00
18-nov-12	1	0,00	132.220.712,79	9.255.449,90	0,00	0,00	0,00	0,00
18-dic-12	1	5.760.887,93	132.220.712,79	9.255.449,90	5.384.007,41	-3.440.380.735,77	376.880,52	-240.826.651,50
18-ene-13	1	0,00	126.836.705,38	8.878.569,38	0,00	0,00	0,00	0,00
18-feb-13	1	0,00	126.836.705,38	8.878.569,38	0,00	0,00	0,00	0,00
18-mar-13	1	5.626.725,50	126.836.705,38	8.878.569,38	5.258.621,96	-2.886.983.457,48	368.103,54	-202.088.842,02
18-abr-13	1	0,00	121.578.083,42	8.510.465,84	0,00	0,00	0,00	0,00
18-may-13	1	0,00	121.578.083,42	8.510.465,84	0,00	0,00	0,00	0,00
18-jun-13	1	5.406.604,14	121.578.083,42	8.510.465,84	5.052.901,07	-2.309.175.786,90	353.703,07	-161.642.305,08
18-jul-13	1	0,00	116.525.182,36	8.156.762,76	0,00	0,00	0,00	0,00
18-ago-13	1	0,00	116.525.182,36	8.156.762,76	0,00	0,00	0,00	0,00
18-sep-13	1	4.571.760,99	116.525.182,36	8.156.762,76	4.272.673,82	-1.559.525.945,19	299.087,17	-109.166.816,16
18-oct-13	1	0,00	112.252.508,53	7.857.675,60	0,00	0,00	0,00	0,00
18-nov-13	1	0,00	112.252.508,53	7.857.675,60	0,00	0,00	0,00	0,00
18-dic-13	1	4.410.601,28	112.252.508,53	7.857.675,60	4.122.057,27	-1.129.443.692,26	288.544,01	-79.061.058,46
18-ene-14	1	0,00	108.130.451,26	7.569.131,59	0,00	0,00	0,00	0,00
18-feb-14	1	0,00	108.130.451,26	7.569.131,59	0,00	0,00	0,00	0,00
18-mar-14	1	5.361.026,26	108.130.451,26	7.569.131,59	5.010.304,92	-921.896.104,52	350.721,34	-64.532.727,32
18-abr-14	1	0,00	103.120.146,35	7.218.410,24	0,00	0,00	0,00	0,00
18-may-14	1	0,00	103.120.146,35	7.218.410,24	0,00	0,00	0,00	0,00
18-jun-14	1	4.480.693,47	103.120.146,35	7.218.410,24	4.187.563,99	-385.255.887,14	293.129,48	-26.967.912,10
18-jul-14	1	0,00	98.932.582,36	6.925.280,76	0,00	0,00	0,00	0,00
18-ago-14	1	0,00	98.932.582,36	6.925.280,76	0,00	0,00	0,00	0,00
18-sep-14	1	4.404.025,27	98.932.582,36	6.925.280,76	5.610.440,08	0,00	47.780,76	0,00
18-oct-14	1	0,00	93.322.142,27	6.877.500,00	0,00	0,00	0,00	0,00
18-nov-14	1	0,00	93.322.142,27	6.877.500,00	0,00	0,00	0,00	0,00

DEAL	917.000.000,000	
MEZZ. DECLINN	7,00%	
MEZZ. STOPS DECLINN	0,75%	6.877.500,00
VIDA RESIDUAL DESDE	18-sep-14	

0,70

0,75

		SERIE A				SERIE B			
Principal		PRINCIPAL		VIDA	PRINCIPAL		VIDA		
18-dic-14	1	5.518.991,86	93.322.142,27	6.877.500,00	5.518.991,86	502.228.258,96	0,00	0,00	0,00
18-ene-15	1	0,00	87.803.150,42	6.877.500,00	0,00	0,00	0,00	0,00	0,00
18-feb-15	1	0,00	87.803.150,42	6.877.500,00	0,00	0,00	0,00	0,00	0,00
18-mar-15	1	5.057.096,30	87.803.150,42	6.877.500,00	5.057.096,30	915.334.429,89	0,00	0,00	0,00
18-abr-15	1	0,00	82.746.054,12	6.877.500,00	0,00	0,00	0,00	0,00	0,00
18-may-15	1	0,00	82.746.054,12	6.877.500,00	0,00	0,00	0,00	0,00	0,00
18-jun-15	1	90.877.749,70	82.746.054,12	6.877.500,00	82.746.054,12	22.589.672.774,14	6.877.500,00	1.877.557.500,00	