



## **F.T.A. UCI 6**

**MARIA JOSE HERENCIAS PALOMINO**

**ANALYST**

**SANTANDER DE TITULIZACION, S.G.F.T, S.A.**

**CIUDAD GRUPO SANTANDER**

**28660 BOADILLA DEL MONTE**

**[marjherencias@gruposantander.com](mailto:marjherencias@gruposantander.com)**

**Tel: 912893300**



NAME OF THE FUND:

F.T.A. UCI 6

INFORMATION AT:

QUARTER/SEMESTER:

August 16, 2013

-

November 18, 2013

YEAR:

2013

Acting on behalf of Santander de Titulización S.G.F.T., S.A. as General Manager:	Signature:
IGNACIO ORTEGA GAVARA - GENERAL MANAGER	

**I. DATA OF THE FUND**

Constitution Date	June 19, 2000	Paying Agent	BANCO SANTANDER	
Disbursement Date	June 22, 2000	Negotiation Market	AIAF	
Final Date of Redemption	November 16, 2030	Ratings Agencies	MOODY'S ESPAÑA	
Management Company	SANTANDER DE TITULIZACION, S.G.F.T, S.A.	Rating	Initial	Current
Credit Rights's Seller	UNION DE CREDITOS INMOBILIARIOS	CLASS A	Aaa	AAH
		CLASS B	A2	ÓAH

**II. SECURITIES ISSUED CHARGED TO THE FUND: SECURITISATION BONDS**

CLASS PRIORITY ISIN CODE	NUM BONDS	NOMINAL			
			Initial	Current	%Act/In
CLASS A ES0338558002	4.364	Nominal per Bond	100.000,00	9.231,93	
		Total Nominal	436.400.000,00	40.288.142,52	9,23 %
CLASS B ES0338558010	206	Nominal per Bond	100.000,00	22.184,43	
		Total Nominal	20.600.000,00	4.569.992,58	22,18 %

REDEMPTION AND INTEREST OF THE BONDS					
Current			Next		
Payment Date of the Current Period November 18, 2013			Next Payment Date February 17, 2014		
	Redemption of the Bonds	Gross Interest	Interest Rate	Gross Interest Next Coupon	Net Interest Next Coupon
CLASS A	284,64 €	12,95 €	0,5191 %	11,95 €	9,44 €
CLASS B	0,00 €	57,98 €	1,0058 %	55,63 €	43,95 €
Accrued amortisation due not payed	0,00 €				
Scheduled Amortisation	NO				



### III. ASSET PURCHASED BY THE FUND: CREDIT RIGHTS

CREDIT RIGHTS	ISSUE DATE	CURRENT DATE
Numbre of CR's	13.139	2.494
CR's Outstanding to be amortised	457.000.004,15	44.858.155,53
CR's Outstanding per Loan to be amortised	34.781,95	17.986,4H
Interest Rate	5,00 %	1,93 %

PREPAYMENT RATE	CURRENT SITUATION
Monthly Single Rate	3,38 %
Average Monthly Single Rate	4,22 %
Constant Prepayment Rate from Constitution	12,01 %

CURRENT DELINQUENCY	Up to 1 month	From 1 to 6 months	Greater than 6 months
Debt Due (Principal + Interest)	15.102,19	12.203,58	77.000,50
Debt to be amortised	0,00	0,00	44.777.316,14
Total Debt	15.102,19	12.203,58	44.854.316,64

**F.T.A. UCI 6****QUARTERLY BONDS PAYOUT REPORT**

18th, November 2013

<b>BONDS. PRINCIPAL</b>	
Previous Balance	46.100.304,12 €
Principal Amortised	1.242.168,96 €
Outstanding Balance	44.858.135,16 €
% of Initial Balance	9,82%
Principal accrued and unpaid	0

<b>INTEREST PAID</b>	
CLASS A	56.513,80 €
CLASS B	11.943,88 €
Interest accrued and unpaid	0,00 €

<b>DATA</b>	
Determination Date	2013/11/11
Payment Date	2013/11/18
Last Payment Date	2013/08/16
Number of Days (Act/360)	94
Reference Interest Rate (%)	0,217%
Next Payment Date	2014/02/17

<b>RESIDUAL LIFE (YEARS)</b>		
	<b>INITIAL</b>	<b>18/11/2013</b>
CLASS A	6,2	0,48
CLASS B	9,8	0,50

**F.T.A. UCI 6****QUARTERLY COLLATERAL REPORT**

18th, November 2013

<b>PRINCIPAL</b>	
Previous Balance	46.100.287,53 €
Principal Amortised	1.242.132,00 €
Outstanding Balance	44.858.155,53 €
Number of Credit Rights	2.494

<b>INTEREST</b>	
Interest received during relevant period	215.703,74 €
Interest accrued during relevant period	294.499,01 €

<b>PRINCIPAL BALANCE IN ARREARS</b>					
	<b>UP to 30 DAYS</b>	<b>30 to 60 DAYS</b>	<b>60 to 90 DAYS</b>	<b>90 to 180 DAYS</b>	<b>&gt; 180 DAYS</b>
Principal Balance in Arrears	12.367,85 €	1.498,58 €	2.901,64 €	5.398,55 €	58.672,77 €
Interest accrued on Credit Rights in Arrears	2.734,34 €	285,66 €	470,61 €	1.648,54 €	18.327,73 €
Outstanding Balance	2.221.012,91 €	129.307,89 €	125.068,14 €	246.284,90 €	457.936,62 €
Number of Credit Rights	108	5	5	8	30
% of Outstanding Balance	4,95%	0,29%	0,28%	0,55%	1,02%

<b>TRANSITORY PROPERTIES</b>	
Last balance	0,00 €
Difference in Actual Period	0,00 €
Current balance	0,00 €
Transitory properties CR's number	0

## F.T.A. UCI 6

### QUARTERLY REPORT - ALLOCATION OF CASH

18th, November 2013

TOTAL CASH RECEIVED END OF PERIOD	1.454.022,25 €
<b>CASH RECEIVED - PRINCIPAL</b>	
Amortisation of Credit Rights	1.242.132,00 €
<b>CASH RECEIVED - INTEREST</b>	
Interest received from Credit Rights	215.703,74 €
Interest received under GIC	9,74 €
<b>INCOMES OF JUDICIAL</b>	315,70 €
<b>EXPENSES OF JUDICIAL</b>	0,00 €
<b>OTHERS</b>	-4.138,93 €

TOTAL CASH PAID END OF PERIOD	1.454.022,25 €
ORDINARY EXPENSES	376,81 €
MANAGEMENT FEE	10.357,50 €
INTEREST PAID TO CLASS A	56.513,80 €
INTEREST PAID TO CLASS B	11.943,88 €
REDEMPTION PAID CLASS A	1.242.168,96 €
REDEMPTION PAID CLASS B	0,00 €
INTEREST SUBORDINATED LOAN SANTANDER	5.474,62 €
INTEREST SUBORDINATED LOAN UCB	5.474,62 €
ADMINISTRATION FEE	6.000,00 €
VARIABLE FEE	115.712,06 €

TREASURY ACCOUNT STATEMENT	4.570.000,04 €
<b>PRINCIPAL RESERVE FUND</b>	
Previous Balance	4.570.000,04 €
Period utilization	0,00 €
Outstanding Balance	4.570.000,04 €
<b>WITHHOLDING TAXES</b>	0,00 €
<b>ISSUE EXPENSES WITHHELD</b>	0,00 €
<b>OTHERS</b>	0,00 €

**F.T.A. UCI 6**

**CREDIT ENHANCEMENT AND SUBORDINATED LOAN**

**18th, November 2013**

<b>CREDIT ENHANCEMENT</b>		
<b>CONCEPTS</b>	<b>INITIAL</b>	<b>18th, November 2013</b>
SUBORDINATED ISSUE	95,49 %	10,19%
PRINCIPAL RESERVE FUND	9.597.000,00 € 2,10%	4.570.000,04 € 10,19%

<b>SUBORDINATED LOANS</b>		
<b>CONCEPTS</b>	<b>INITIAL</b>	<b>18th, November 2013</b>
<b>SUBORDINATED LOAN A SANTANDER</b>		
Total Outstanding Subordinated Loan	5.410.010,46 €	2.285.788,65 €
Interest Rate	2,650 %	0,93%
<b>SUBORDINATED LOAN A UCB</b>		
Total Outstanding Subordinated Loan	5.410.010,46 €	2.285.788,65 €
Interest Rate	2,650 %	0,93%



## F.T.A. UCI 6

### DEFINITIONS

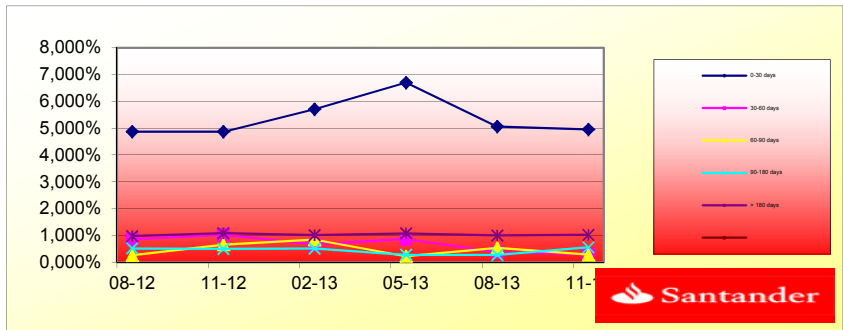
**DETERMINATION DATE** Means the date in which the Gestora will carry out the necessary calculations, on behalf of the Fund, for the distribution of the available funds at this date, according with the Order of Priority of Payments.

All the information regarding the Assets (Outstanding Balance of the Credit Rights, arrears' tables, transitory properties, stratiphication tables, etc.) are refered to this mentioned date.

**TRANSITORY PROPERTIES** Those assets in the balance of the Fund as a consequence of a judicial or non-judicial process.

HISTORICAL ARREARS REPORT

Data	08-12	11-12	02-13	05-13	08-13	11-13
0-30 days	4,868%	4,865%	5,705%	6,698%	5,059%	4,951%
30-60 days	0,858%	1,017%	0,659%	0,862%	0,373%	0,288%
60-90 days	0,253%	0,655%	0,837%	0,225%	0,536%	0,279%
90-180 days	0,510%	0,495%	0,504%	0,273%	0,264%	0,549%
> 180 days	0,968%	1,080%	1,004%	1,072%	0,993%	1,021%



TRIGGERS

**TRIGGERS BONDS**

1. IF 1.a) IS HIGHER THAN 1.b) THERE IS NO REDEMPTION OF CLASS B:

1.a) CR'S IN ARREARS OVER 90 DAYS	704.221,52 €
1.b) 7% CR'S OUTSTANDING BALANCE	3.140.070,89 €

THE CLASS B BONDS ARE ON THE MINIMUM LEVEL PERMITTED

**TRIGGERS RESERVE FUND**

1. IF 1.a) IS HIGHER THAN 1.b) THERE IS NO REDEMPTION OF RESERVE FUND:

1.a) CR'S IN ARREARS OVER 90 DAYS	N/A
1.b) 3% CR'S OUTSTANDING BALANCE	N/A

2. IF 2.a) IS LOWER THAN 2.b) THERE IS NO REDEMPTION OF RESERVE FUND:

2.a) WEIGHTED AVERAGE RATE CR'S	N/A
2.b) WEIGHTED AVERAGE RATE BONDS A AND B + 0,40%	N/A

3. IF 3.a) IS HIGHER THAN 3.b) THERE IS NO REDEMPTION OF RESERVE FUND:

3.a) WRITTE OFF	N/A
3.b) 0,025% INITIAL OUTSTANDING BALANCE CR'S *N/A PAYMENT DATES	N/A

THE RESERVE FUND IS ON THE MINIMUM LEVEL PERMITTED

**FONDO DE TITULIZACIÓN HIPOTECARIA  
UCI 6**

**L.T.V.**

<b>LTV (%)</b>	<b>SALDO VIVO</b>	<b>%</b>	<b>NÚMERO</b>	<b>% PRESTAMOS</b>
<b>LTV (%)</b>	<b>OUTS. BALANC</b>	<b>% OUTSTANDING</b>	<b>LOANS</b>	<b>% LOANS</b>
<b>0,00-9,99</b>	867.195,93	2,1180%	176	11,4137%
<b>10,00 - 19,99</b>	3.207.249,23	7,8331%	203	13,1647%
<b>20,00 - 29,99</b>	7.896.196,07	19,2850%	332	21,5305%
<b>30,00 - 39,99</b>	9.331.835,99	22,7913%	291	18,8716%
<b>40,00 - 49,99</b>	10.594.131,30	25,8743%	303	19,6498%
<b>50,00 - 59,99</b>	8.588.844,64	20,9767%	227	14,7211%
<b>60,00 - 69,99</b>	459.210,86	1,1215%	10	0,6485%

**F.T.A.: UCI 6**

**Counterpart**

Agreement	Counterpart	Rating Agency	Minimum rating	Current rating
Treasury account	Banco Santander S.A.	Moody's	S/T: P-1	P-2

COUNTERPARTY DOES NOT HAVE THE MINIMUM RATING REQUIRED. TREASURY ACCOUNT HAS BEEN TRANSFERRED TO A COUNTERPARTY WITH MINIMUM RATING REQUIRED.

**UCI 6**

Date	Real Outstanding	1,06%	Remaining at the end of the month	Average Single monthly mortality	CPR	Monthly Single monthly mortality	CPR	
		Prepayment vector						
							4,22%	
	457.000.004,2		100,00%	100,00%				
julio-00	456.040.916,0	453.128.783,7	98,94%	99,36%	0,64%	7,40%	0,64%	7,40%
agosto-00	455.077.826,1	448.828.507,4	97,89%	98,63%	0,69%	7,96%	0,74%	8,52%
septiembre-00	454.110.683,2	445.856.137,4	96,85%	98,18%	0,61%	7,08%	0,45%	5,28%
octubre-00	453.139.470,2	443.087.649,1	95,83%	97,78%	0,56%	6,51%	0,41%	4,79%
noviembre-00	452.164.170,0	439.171.130,0	94,81%	97,13%	0,58%	6,76%	0,67%	7,75%
diciembre-00	451.184.765,4	436.191.628,6	93,80%	96,68%	0,56%	6,54%	0,46%	5,41%
enero-01	450.201.239,2	431.891.179,4	92,81%	95,93%	0,59%	6,87%	0,77%	8,85%
febrero-01	449.213.573,9	428.312.545,1	91,83%	95,35%	0,59%	6,90%	0,61%	7,09%
marzo-01	448.221.752,3	423.886.429,0	90,85%	94,57%	0,62%	7,17%	0,81%	9,35%
abril-01	447.225.756,7	418.072.840,2	89,89%	93,48%	0,67%	7,77%	1,15%	12,98%
mayo-01	446.225.569,6	414.462.703,6	88,94%	92,88%	0,67%	7,74%	0,64%	7,43%
junio-01	445.221.173,5	410.239.612,2	87,99%	92,14%	0,68%	7,86%	0,80%	9,14%
julio-01	444.212.550,4	405.614.216,5	87,06%	91,31%	0,70%	8,05%	0,90%	10,31%
agosto-01	443.199.682,8	400.238.316,5	86,14%	90,31%	0,73%	8,37%	1,10%	12,43%
septiembre-01	442.182.552,7	395.859.610,6	85,22%	89,52%	0,74%	8,47%	0,87%	9,92%
octubre-01	441.161.142,1	391.241.620,9	84,32%	88,68%	0,75%	8,61%	0,94%	10,69%
noviembre-01	440.135.433,2	385.838.182,2	83,43%	87,66%	0,77%	8,88%	1,15%	12,97%
diciembre-01	439.105.407,7	380.748.736,1	82,54%	86,71%	0,79%	9,07%	1,09%	12,30%
enero-02	438.071.047,5	375.271.007,5	81,67%	85,66%	0,81%	9,31%	1,21%	13,55%
febrero-02	437.032.334,3	370.042.745,41	80,80%	84,67%	0,83%	9,50%	1,16%	13,05%
marzo-02	435.989.249,9	364.551.475,1	79,94%	83,61%	0,85%	9,72%	1,25%	13,99%
abril-02	434.941.775,9	359.297.389,6	79,10%	82,61%	0,86%	9,90%	1,20%	13,53%
mayo-02	433.889.893,8	353.940.719,2	78,26%	81,57%	0,88%	10,08%	1,25%	14,03%
junio-02	432.833.585,0	347.793.248,4	77,43%	80,35%	0,91%	10,36%	1,50%	16,56%
julio-02	431.774.155,1	342.309.563,3	76,61%	79,28%	0,92%	10,55%	1,34%	14,90%
agosto-02	430.710.266,9	336.877.719,2	75,79%	78,21%	0,94%	10,72%	1,34%	14,98%
septiembre-02	429.641.901,5	332.638.740,1	74,99%	77,42%	0,94%	10,75%	1,01%	11,50%
octubre-02	428.569.040,0	328.113.486,4	74,19%	76,56%	0,95%	10,82%	1,11%	12,57%
noviembre-02	427.491.663,6	324.171.387,7	73,41%	75,83%	0,95%	10,82%	0,95%	10,85%
diciembre-02	426.409.753,2	318.147.224,8	72,63%	74,61%	0,97%	11,06%	1,61%	17,69%
enero-03	425.324.271,8	313.840.105,4	71,86%	73,79%	0,98%	11,10%	1,10%	12,45%
febrero-03	424.234.222,3	308.434.679,1	71,10%	72,70%	0,99%	11,27%	1,47%	16,28%
marzo-03	423.139.585,5	302.052.495,6	70,34%	71,38%	1,02%	11,54%	1,82%	19,74%
abril-03	422.040.342,2	296.379.448,4	69,60%	70,23%	1,03%	11,73%	1,62%	17,82%
mayo-03	420.936.472,8	290.615.261,4	68,86%	69,04%	1,05%	11,93%	1,69%	18,47%
junio-03	419.827.958,0	284.645.570,9	68,13%	67,80%	1,07%	12,15%	1,80%	19,54%
julio-03	418.717.512,0	276.839.156,1	67,41%	66,12%	1,11%	12,56%	2,48%	26,06%

Date	Real Outstanding	1,06%	Remaining at the end of the month	Average Single monthly mortality	CPR	Monthly Single monthly mortality	CPR	
		Prepayment vector						
							4,22%	
agosto-03	417.602.392,7	267.980.363,8	66,69%	64,17%	1,16%	13,07%	2,94%	30,11%
septiembre-03	416.482.580,7	261.911.338,7	65,99%	62,89%	1,18%	13,30%	2,00%	21,55%
octubre-03	415.358.056,2	254.035.675,0	65,29%	61,16%	1,22%	13,71%	2,74%	28,39%
noviembre-03	414.228.799,2	246.480.453,8	64,59%	59,50%	1,26%	14,10%	2,71%	28,08%
diciembre-03	413.094.790,0	239.591.881,9	63,91%	58,00%	1,29%	14,41%	2,53%	26,45%
enero-04	411.956.645,0	232.532.574,9	63,23%	56,45%	1,32%	14,75%	2,68%	27,80%
febrero-04	410.813.710,2	227.850.234,3	62,56%	55,46%	1,33%	14,85%	1,74%	19,00%
marzo-04	409.665.965,6	222.469.311,6	61,90%	54,31%	1,35%	15,03%	2,09%	22,37%
abril-04	408.513.391,0	217.788.596,9	61,24%	53,31%	1,36%	15,13%	1,83%	19,86%
mayo-04	407.355.965,9	211.304.679,0	60,59%	51,87%	1,39%	15,43%	2,70%	28,01%
junio-04	406.193.669,9	206.609.961,4	59,95%	50,86%	1,40%	15,55%	1,94%	20,97%
julio-04	405.030.380,6	201.387.274,7	59,31%	49,72%	1,42%	15,73%	2,25%	23,88%
agosto-04	403.862.195,8	196.432.862,3	58,68%	48,64%	1,43%	15,88%	2,18%	23,22%
septiembre-04	402.689.094,9	193.264.517,0	58,06%	47,99%	1,43%	15,86%	1,33%	14,80%

Date	Real Outstanding	1,06%	Remaining at the end of the month	Average Single monthly mortality	CPR	Monthly Single monthly mortality	CPR	
		Prepayment vector						
							4,22%	
octubre-04	401.511.057,2	189.723.138,8	57,45%	47,25%	1,43%	15,89%	1,54%	17,04%
noviembre-04	400.328.061,9	186.369.970,8	56,84%	46,55%	1,43%	15,90%	1,48%	16,35%
diciembre-04	399.140.088,2	182.504.224,3	56,24%	45,72%	1,44%	15,96%	1,78%	19,42%
enero-05	397.949.157,2	178.392.645,5	55,64%	44,83%	1,45%	16,06%	1,96%	21,15%
febrero-05	396.753.214,3	174.837.087,6	55,05%	44,07%	1,45%	16,10%	1,70%	18,57%
marzo-05	395.552.238,6	171.903.827,8	54,47%	43,46%	1,45%	16,09%	1,38%	15,35%
abril-05	394.346.208,7	168.239.247,0	53,89%	42,66%	1,46%	16,16%	1,83%	19,90%
mayo-05	393.135.103,5	164.202.790,5	53,32%	41,77%	1,47%	16,27%	2,10%	22,47%
junio-05	391.918.901,5	160.739.959,7	52,75%	41,01%	1,47%	16,33%	1,81%	19,63%
julio-05	390.701.860,8	156.628.073,3	52,19%	40,09%	1,49%	16,46%	2,25%	23,94%
agosto-05	389.479.698,4	152.963.373,2	51,64%	39,27%	1,50%	16,55%	2,03%	21,85%
septiembre-05	388.252.392,8	150.814.394,0	51,09%	38,84%	1,49%	16,48%	1,09%	12,36%
octubre-05	387.019.922,2	147.200.821,1	50,55%	38,03%	1,50%	16,58%	2,09%	22,34%
noviembre-05	385.782.265,0	144.039.594,3	50,01%	37,34%	1,50%	16,63%	1,83%	19,91%
diciembre-05	384.539.399,3	141.159.654,6	49,48%	36,71%	1,51%	16,66%	1,68%	18,42%
enero-06	383.297.061,2	138.445.593,2	48,96%	36,12%	1,51%	16,67%	1,60%	17,65%
febrero-06	382.049.494,9	135.044.659,8	48,44%	35,35%	1,52%	16,77%	2,14%	22,84%
marzo-06	380.796.678,4	132.300.064,1	47,93%	34,74%	1,52%	16,79%	1,71%	18,70%
abril-06	379.538.589,7	129.075.221,0	47,42%	34,01%	1,53%	16,88%	2,11%	22,62%
mayo-06	378.275.206,6	126.639.279,5	46,91%	33,48%	1,53%	16,89%	1,56%	17,19%
junio-06	377.006.506,7	124.003.623,7	46,42%	32,89%	1,53%	16,92%	1,75%	19,11%
julio-06	375.739.564,1	120.891.562,8	45,92%	32,17%	1,54%	17,01%	2,18%	23,25%
agosto-06	374.467.289,9	118.426.272,7	45,44%	31,63%	1,54%	17,03%	1,71%	18,66%
septiembre-06	373.189.661,5	116.764.763,8	44,96%	31,29%	1,54%	16,97%	1,07%	12,06%
octubre-06	371.906.656,4	114.821.542,6	44,48%	30,87%	1,53%	16,94%	1,32%	14,79%
noviembre-06	370.618.252,0	112.351.017,3	44,01%	30,31%	1,54%	16,97%	1,81%	19,70%
diciembre-06	369.324.425,6	109.914.875,8	43,54%	29,76%	1,54%	17,01%	1,83%	19,84%
enero-07	368.030.272,9	107.970.795,4	43,08%	29,34%	1,54%	17,00%	1,42%	15,80%
febrero-07	366.730.674,0	106.255.615,9	42,62%	28,97%	1,54%	16,96%	1,24%	13,90%
marzo-07	365.425.606,0	105.031.432,5	42,17%	28,74%	1,53%	16,87%	0,80%	9,18%
abril-07	364.115.045,8	103.282.607,4	41,72%	28,37%	1,52%	16,84%	1,31%	14,65%
mayo-07	362.798.970,3	101.544.012,5	41,28%	27,99%	1,52%	16,81%	1,33%	14,81%
junio-07	361.477.356,4	100.393.799,9	40,84%	27,77%	1,51%	16,72%	0,77%	8,87%
julio-07	360.160.610,4	98.783.980,9	40,41%	27,43%	1,51%	16,69%	1,24%	13,95%
agosto-07	358.838.323,2	97.421.136,6	39,98%	27,15%	1,50%	16,63%	1,02%	11,54%
septiembre-07	357.510.471,3	96.000.767,8	39,56%	26,85%	1,50%	16,59%	1,09%	12,34%
octubre-07	356.177.031,4	94.815.177,8	39,14%	26,62%	1,49%	16,51%	0,87%	9,90%
noviembre-07	354.837.980,0	93.668.706,7	38,72%	26,40%	1,49%	16,44%	0,84%	9,59%
diciembre-07	353.493.293,3	92.475.277,8	38,31%	26,16%	1,48%	16,37%	0,90%	10,27%
enero-08	352.150.345,0	91.072.415,0	37,91%	25,86%	1,48%	16,33%	1,14%	12,87%



Date	Real Outstanding	1,06%	Remaining at the end of the month	Average Single monthly mortality	CPR	Monthly Single monthly mortality	CPR	
		Prepayment vector						
							4,22%	
febrero-08	350.801.745,0	90.178.994,2	37,50%	25,71%	1,47%	16,24%	0,60%	6,97%
marzo-08	349.447.469,8	88.957.504,4	37,11%	25,46%	1,46%	16,18%	0,97%	11,06%
abril-08	348.087.495,2	87.358.089,4	36,71%	25,10%	1,46%	16,18%	1,41%	15,71%
mayo-08	346.721.797,5	85.556.925,8	36,32%	24,68%	1,46%	16,20%	1,68%	18,36%
junio-08	345.350.352,4	84.237.854,7	35,94%	24,39%	1,46%	16,17%	1,15%	12,97%
julio-08	343.982.411,4	83.150.819,9	35,56%	24,17%	1,45%	16,11%	0,90%	10,26%
agosto-08	342.608.713,7	82.088.148,7	35,18%	23,96%	1,45%	16,05%	0,88%	10,09%
septiembre-08	341.229.234,9	81.307.334,0	34,81%	23,83%	1,44%	15,96%	0,55%	6,41%
octubre-08	339.843.950,8	80.607.800,6	34,44%	23,72%	1,43%	15,86%	0,46%	5,34%
noviembre-08	338.452.837,1	79.913.268,5	34,07%	23,61%	1,42%	15,76%	0,45%	5,32%
diciembre-08	337.055.869,0	79.110.607,2	33,71%	23,47%	1,41%	15,68%	0,59%	6,90%
enero-09	335.667.288,9	78.397.347,6	33,36%	23,36%	1,40%	15,59%	0,49%	5,74%
febrero-09	334.272.865,3	77.963.628,1	33,00%	23,32%	1,39%	15,46%	0,14%	1,65%
marzo-09	332.872.573,4	77.088.351,3	32,65%	23,16%	1,38%	15,40%	0,71%	8,16%
abril-09	331.466.388,7	76.151.863,4	32,31%	22,97%	1,38%	15,34%	0,80%	9,14%
mayo-09	330.054.286,3	75.640.093,4	31,96%	22,92%	1,37%	15,23%	0,25%	2,92%
junio-09	328.636.241,2	74.782.635,8	31,62%	22,76%	1,36%	15,17%	0,71%	8,16%
julio-09	327.233.118,9	74.079.720,5	31,29%	22,64%	1,35%	15,09%	0,52%	6,01%
agosto-09	325.824.091,8	73.119.413,8	30,96%	22,44%	1,35%	15,04%	0,87%	9,95%
septiembre-09	324.409.135,0	72.373.766,9	30,63%	22,31%	1,34%	14,97%	0,59%	6,83%
octubre-09	322.988.223,6	71.540.102,4	30,30%	22,15%	1,34%	14,91%	0,72%	8,27%
noviembre-09	321.561.332,5	70.843.524,9	29,98%	22,03%	1,33%	14,84%	0,53%	6,23%
diciembre-09	320.128.436,6	70.075.071,7	29,66%	21,89%	1,32%	14,78%	0,64%	7,44%
enero-10	318.700.982,4	69.407.998,1	29,35%	21,78%	1,32%	14,70%	0,51%	5,93%
febrero-10	317.267.521,0	68.883.690,5	29,04%	21,71%	1,31%	14,61%	0,31%	3,62%
marzo-10	315.828.027,1	68.079.926,9	28,73%	21,56%	1,30%	14,56%	0,72%	8,27%
abril-10	314.382.475,4	67.331.944,8	28,43%	21,42%	1,30%	14,50%	0,64%	7,46%
mayo-10	312.930.840,2	66.681.412,3	28,12%	21,31%	1,29%	14,44%	0,51%	5,91%
junio-10	311.473.096,1	65.850.842,7	27,83%	21,14%	1,29%	14,39%	0,78%	9,01%
julio-10	310.020.928,4	65.170.200,7	27,53%	21,02%	1,28%	14,33%	0,57%	6,63%
agosto-10	308.562.649,5	64.720.129,2	27,24%	20,97%	1,27%	14,24%	0,22%	2,62%
septiembre-10	307.098.233,7	64.222.840,5	26,95%	20,91%	1,26%	14,16%	0,30%	3,49%
octubre-10	305.627.655,1	63.659.901,9	26,67%	20,83%	1,26%	14,09%	0,40%	4,69%
noviembre-10	304.150.887,9	63.183.559,8	26,38%	20,77%	1,25%	14,00%	0,27%	3,15%
diciembre-10	302.667.905,9	62.574.931,8	26,10%	20,67%	1,24%	13,94%	0,48%	5,59%
enero-11	301.201.153,4	61.684.530,3	25,83%	20,48%	1,24%	13,91%	0,94%	10,75%
febrero-11	299.728.228,4	61.178.183,47	25,55%	20,41%	1,23%	13,84%	0,33%	3,93%
marzo-11	298.249.104,8	60.526.819,9	25,28%	20,29%	1,23%	13,79%	0,57%	6,68%
abril-11	296.763.756,6	60.037.298,6	25,01%	20,23%	1,22%	13,71%	0,31%	3,68%
mayo-11	295.272.157,5	59.570.470,7	24,75%	20,17%	1,21%	13,64%	0,28%	3,27%
junio-11	293.774.281,3	59.035.458,4	24,49%	20,10%	1,21%	13,57%	0,39%	4,61%

Date	Real Outstanding	1,06%	Remaining at the end of the month	Average Single monthly mortality	CPR	Monthly Single monthly mortality	CPR	
		Prepayment vector						
							4,22%	
julio-11	292.290.634,9	58.463.062,2	24,23%	20,00%	1,20%	13,52%	0,47%	5,46%
agosto-11	290.800.744,9	57.974.898,2	23,97%	19,94%	1,20%	13,45%	0,33%	3,85%
septiembre-11	289.304.584,9	57.499.936,9	23,71%	19,88%	1,19%	13,38%	0,31%	3,61%
octubre-11	287.802.128,6	56.961.821,9	23,46%	19,79%	1,18%	13,32%	0,42%	4,91%
noviembre-11	286.293.349,4	56.377.271,8	23,21%	19,69%	1,18%	13,27%	0,50%	5,89%
diciembre-11	284.778.220,8	55.786.401,7	22,97%	19,59%	1,17%	13,22%	0,52%	6,08%
enero-12	283.280.151,5	55.100.114,3	22,72%	19,45%	1,17%	13,18%	0,71%	8,17%
febrero-12	281.775.777,9	54.677.183,7	22,48%	19,40%	1,16%	13,11%	0,24%	2,82%
marzo-12	280.265.073,3	54.284.122,3	22,25%	19,37%	1,16%	13,04%	0,18%	2,18%
abril-12	278.748.011,2	53.747.585,9	22,01%	19,28%	1,15%	12,99%	0,45%	5,26%
mayo-12	277.224.564,7	53.349.080,2	21,78%	19,24%	1,15%	12,92%	0,20%	2,33%
junio-12	275.694.707,1	52.790.130,2	21,55%	19,15%	1,14%	12,87%	0,50%	5,82%
julio-12	274.190.230,1	52.297.273,1	21,32%	19,07%	1,14%	12,81%	0,39%	4,58%
agosto-12	272.679.421,7	51.801.946,8	21,09%	19,00%	1,13%	12,76%	0,40%	4,68%
septiembre-12	271.162.255,4	51.328.311,8	20,87%	18,93%	1,13%	12,70%	0,36%	4,23%
octubre-12	269.638.704,2	50.833.065,7	20,65%	18,85%	1,12%	12,65%	0,41%	4,76%
noviembre-12	268.108.741,5	50.318.615,1	20,43%	18,77%	1,12%	12,61%	0,45%	5,24%
diciembre-12	266.572.340,2	49.798.821,6	20,21%	18,68%	1,11%	12,56%	0,46%	5,41%
enero-13	265.051.533,3	49.234.420,4	20,00%	18,58%	1,11%	12,52%	0,57%	6,59%
febrero-13	263.524.326,2	48.797.974,1	19,78%	18,52%	1,10%	12,47%	0,31%	3,68%
marzo-13	261.990.692,2	48.327.204,1	19,57%	18,45%	1,10%	12,42%	0,39%	4,52%
abril-13	260.450.604,2	47.903.838,1	19,37%	18,39%	1,09%	12,36%	0,29%	3,42%
mayo-13	258.904.034,9	47.487.232,9	19,16%	18,34%	1,09%	12,30%	0,28%	3,28%
junio-13	257.350.957,2	46.965.860,9	18,96%	18,25%	1,08%	12,26%	0,50%	5,85%
julio-13	255.807.272,4	46.570.982,4	18,76%	18,21%	1,08%	12,21%	0,24%	2,87%
agosto-13	254.257.091,4	46.100.287,5	18,56%	18,13%	1,07%	12,16%	0,41%	4,78%
septiembre-13	252.700.386,6	45.651.534,8	18,36%	18,07%	1,07%	12,12%	0,36%	4,27%
octubre-13	251.137.130,8	45.269.836,5	18,17%	18,03%	1,07%	12,06%	0,22%	2,59%
noviembre-13	249.567.296,2	44.858.155,5	17,97%	17,97%	1,06%	12,01%	0,29%	3,38%

**UCI 6**

DEAL 457.000.000  
 MEZZ. DECLINN 8,80%  
 MEZZ. STOPS DECLINN 1,00%  
 VIDA RESIDUAL DESDE 09/11/2013

FECHA	PRINCIPAL AVAILABLE	SENIOR NOTES	MEZZANIE NOTES	SERIE A PRINCIPAL	0,48	SERIE B PRINCIPAL	0,50
					VIDA MEDIA		VIDA MEDIA
		436.400.000,00	20.600.000,00				
08/07/2000		0 436.400.000,00	20.600.000,00	0	0	0	0
08/08/2000	1	0 436.400.000,00	20.600.000,00	0	0	0	0
08/09/2000	1	0 436.400.000,00	20.600.000,00	0	0	0	0
08/10/2000	1	0 436.400.000,00	20.600.000,00	0	0	0	0
08/11/2000	1	28.304.681 436.400.000,00	20.600.000,00	28.304.681	-134.418.928.455	0	0
08/12/2000	1	0 408.095.319,34	20.600.000,00	0	0	0	0
08/01/2001	1	0 408.095.319,34	20.600.000,00	0	0	0	0
08/02/2001	1	16.201.897 408.095.319,34	20.600.000,00	16.201.897	-75.452.235.095	0	0
09/03/2001	1	0 391.893.422,18	20.600.000,00	0	0	0	0
09/04/2001	1	0 391.893.422,18	20.600.000,00	0	0	0	0
09/05/2001	1	15.639.964 391.893.422,18	20.600.000,00	15.639.964	-71.427.714.549	0	0
09/06/2001	1	0 376.253.458,40	20.600.000,00	0	0	0	0
09/07/2001	1	0 376.253.458,40	20.600.000,00	0	0	0	0
09/08/2001	1	15.096.715 376.253.458,40	20.600.000,00	15.096.715	-67.557.797.466	0	0
09/09/2001	1	0 361.156.743,89	20.600.000,00	0	0	0	0
09/10/2001	1	0 361.156.743,89	20.600.000,00	0	0	0	0
09/11/2001	1	14.571.542 361.156.743,89	20.600.000,00	14.571.542	-63.867.069.407	0	0
09/12/2001	1	0 346.585.201,70	20.600.000,00	0	0	0	0
09/01/2002	1	0 346.585.201,70	20.600.000,00	0	0	0	0
09/02/2002	1	14.063.859 346.585.201,70	20.600.000,00	14.063.859	-60.348.019.175	0	0
09/03/2002	1	0 332.521.342,65	20.600.000,00	0	0	0	0
09/04/2002	1	0 332.521.342,65	20.600.000,00	0	0	0	0
09/05/2002	1	13.573.096 332.521.342,65	20.600.000,00	13.573.096	-57.034.150.336	0	0
09/06/2002	1	0 318.948.246,43	20.600.000,00	0	0	0	0
09/07/2002	1	0 318.948.246,43	20.600.000,00	0	0	0	0
09/08/2002	1	13.096.691 318.948.246,43	20.600.000,00	13.096.691	-53.827.401.596	0	0
09/09/2002	1	0 305.851.555,04	20.600.000,00	0	0	0	0
09/10/2002	1	0 305.851.555,04	20.600.000,00	0	0	0	0
09/11/2002	1	12.637.257 305.851.555,04	20.600.000,00	12.637.257	-50.776.497.001	0	0
09/12/2002	1	0 293.214.298,44	20.600.000,00	0	0	0	0
09/01/2003	1	0 293.214.298,44	20.600.000,00	0	0	0	0
09/02/2003	1	12.192.769 293.214.298,44	20.600.000,00	12.192.769	-47.868.812.948	0	0
09/03/2003	1	0 281.021.528,97	20.600.000,00	0	0	0	0
09/04/2003	1	0 281.021.528,97	20.600.000,00	0	0	0	0
09/05/2003	1	11.763.887 281.021.528,97	20.600.000,00	11.763.887	-45.138.032.888	0	0
09/06/2003	1	0 269.257.642,37	20.600.000,00	0	0	0	0
09/07/2003	1	0 269.257.642,37	20.600.000,00	0	0	0	0
09/08/2003	1	11.346.396 269.257.642,37	20.600.000,00	11.346.396	-42.492.254.329	0	0
09/09/2003	1	0 257.911.246,02	20.600.000,00	0	0	0	0
09/10/2003	1	0 257.911.246,02	20.600.000,00	0	0	0	0
09/11/2003	1	10.944.826 257.911.246,02	20.600.000,00	10.944.826	-39.981.449.470	0	0
09/12/2003	1	0 246.966.420,00	20.600.000,00	0	0	0	0
09/01/2004	1	0 246.966.420,00	20.600.000,00	0	0	0	0
09/02/2004	1	10.557.731 246.966.420,00	20.600.000,00	10.557.731	-37.596.078.444	0	0
08/03/2004	1	0 236.408.689,46	20.600.000,00	0	0	0	0
08/04/2004	1	0 236.408.689,46	20.600.000,00	0	0	0	0
08/05/2004	1	10.184.046 236.408.689,46	20.600.000,00	9.547.803	-33.149.973.745	636.242	-2.209.032.347
08/06/2004	1	0 226.860.885,96	19.963.757,96	0	0	0	0
08/07/2004	1	0 226.860.885,96	19.963.757,96	0	0	0	0
08/08/2004	1	9.818.720 226.860.885,96	19.963.757,96	9.024.559	-30.503.010.357	794.161	-2.684.264.911
08/09/2004	1	0 217.836.326,68	19.169.596,75	0	0	0	0
08/10/2004	1	0 217.836.326,68	19.169.596,75	0	0	0	0
08/11/2004	1	9.468.104 217.836.326,68	19.169.596,75	8.702.301	-28.613.166.612	765.803	-2.517.958.662

FECHA		PRINCIPAL AVAILABLE	SENIOR NOTES	MEZZANIE NOTES	SERIE A PRINCIPAL	VIDA MEDIA	SERIE B PRINCIPAL	VIDA MEDIA
08/12/2004	1	0	209.134.025,40	18.403.794,24	0	0	0	0
08/01/2005	1	0	209.134.025,40	18.403.794,24	0	0	0	0
08/02/2005	1	9.129.302	209.134.025,40	18.403.794,24	8.390.902	-26.817.323.402	738.399	-2.359.924.459
09/03/2005	1	0	200.743.123,21	17.665.394,84	0	0	0	0
09/04/2005	1	0	200.743.123,21	17.665.394,84	0	0	0	0
09/05/2005	1	8.803.101	200.743.123,21	17.665.394,84	8.091.085	-25.130.911.541	712.016	-2.211.520.216
09/06/2005	1	0	192.652.037,72	16.953.379,32	0	0	0	0
09/07/2005	1	0	192.652.037,72	16.953.379,32	0	0	0	0
09/08/2005	1	8.484.582	192.652.037,72	16.953.379,32	7.798.329	-23.504.164.133	686.253	-2.068.366.444
09/09/2005	1	0	184.853.708,54	16.267.126,35	0	0	0	0
09/10/2005	1	0	184.853.708,54	16.267.126,35	0	0	0	0
09/11/2005	1	8.179.154	184.853.708,54	16.267.126,35	7.517.605	-21.966.442.480	661.549	-1.933.046.938
09/12/2005	1	0	177.336.103,32	15.605.577,09	0	0	0	0
09/01/2006	1	0	177.336.103,32	15.605.577,09	0	0	0	0
09/02/2006	1	7.880.645	177.336.103,32	15.605.577,09	7.243.240	-20.498.368.661	637.405	-1.803.856.442
09/03/2006	1	0	170.092.863,51	14.968.171,99	0	0	0	0
09/04/2006	1	0	170.092.863,51	14.968.171,99	0	0	0	0
09/05/2006	1	7.595.185	170.092.863,51	14.968.171,99	6.980.868	-19.134.560.402	614.316	-1.683.841.315
09/06/2006	1	0	163.111.995,06	14.353.855,57	0	0	0	0
09/07/2006	1	0	163.111.995,06	14.353.855,57	0	0	0	0
09/08/2006	1	7.315.689	163.111.995,06	14.353.855,57	6.723.979	-17.811.820.463	591.710	-1.567.440.201
09/09/2006	1	0	156.388.016,03	13.762.145,41	0	0	0	0
09/10/2006	1	0	156.388.016,03	13.762.145,41	0	0	0	0
09/11/2006	1	7.049.080	156.388.016,03	13.762.145,41	6.478.934	-16.566.633.312	570.146	-1.457.863.731
09/12/2006	1	0	149.909.082,39	13.191.999,25	0	0	0	0
09/01/2007	1	0	149.909.082,39	13.191.999,25	0	0	0	0
09/02/2007	1	6.790.336	149.909.082,39	13.191.999,25	6.241.118	-15.384.355.397	549.218	-1.353.823.275
09/03/2007	1	0	143.667.964,58	12.642.780,88	0	0	0	0
09/04/2007	1	0	143.667.964,58	12.642.780,88	0	0	0	0
09/05/2007	1	6.542.686	143.667.964,58	12.642.780,88	6.013.498	-14.288.071.192	529.188	-1.257.350.265
09/06/2007	1	0	137.654.466,61	12.113.593,06	0	0	0	0
09/07/2007	1	0	137.654.466,61	12.113.593,06	0	0	0	0
09/08/2007	1	6.297.254	137.654.466,61	12.113.593,06	5.787.918	-13.219.603.901	509.337	-1.163.325.143
09/09/2007	1	0	131.866.548,96	11.604.256,31	0	0	0	0
09/10/2007	1	0	131.866.548,96	11.604.256,31	0	0	0	0
09/11/2007	1	6.064.591	131.866.548,96	11.604.256,31	5.574.072	-12.218.366.579	490.518	-1.075.216.259
09/12/2007	1	0	126.292.476,62	11.113.737,94	0	0	0	0
09/01/2008	1	0	126.292.476,62	11.113.737,94	0	0	0	0
09/02/2008	1	5.838.424	126.292.476,62	11.113.737,94	5.366.198	-11.269.016.707	472.225	-991.673.470
08/03/2008	1	0	120.926.278,18	10.641.512,48	0	0	0	0
08/04/2008	1	0	120.926.278,18	10.641.512,48	0	0	0	0
08/05/2008	1	5.622.903	120.926.278,18	10.641.512,48	5.168.110	-10.393.068.659	454.794	-914.590.042
08/06/2008	1	0	115.758.168,46	10.186.718,82	0	0	0	0
08/07/2008	1	0	115.758.168,46	10.186.718,82	0	0	0	0
08/08/2008	1	5.410.945	115.758.168,46	10.186.718,82	4.973.295	-9.543.753.478	437.650	-839.850.306
08/09/2008	1	0	110.784.873,26	9.749.068,85	0	0	0	0
08/10/2008	1	0	110.784.873,26	9.749.068,85	0	0	0	0
08/11/2008	1	5.209.683	110.784.873,26	9.749.068,85	4.788.311	-8.748.244.532	421.371	-769.845.519
08/12/2008	1	0	105.996.562,08	9.327.697,46	0	0	0	0
08/01/2009	1	0	105.996.562,08	9.327.697,46	0	0	0	0
08/02/2009	1	5.009.099	105.996.562,08	9.327.697,46	4.603.952	-7.987.856.188	405.148	-702.931.345
09/03/2009	1	0	101.392.610,39	8.922.549,71	0	0	0	0
09/04/2009	1	0	101.392.610,39	8.922.549,71	0	0	0	0
09/05/2009	1	4.820.370	101.392.610,39	8.922.549,71	4.430.487	-7.288.151.364	389.883	-641.357.320
09/06/2009	1	0	96.962.123,23	8.532.666,84	0	0	0	0
09/07/2009	1	0	96.962.123,23	8.532.666,84	0	0	0	0
09/08/2009	1	4.629.814	96.962.123,23	8.532.666,84	4.255.344	-6.608.549.435	374.470	-581.552.350
09/09/2009	1	0	92.706.779,10	8.158.196,56	0	0	0	0
09/10/2009	1	0	92.706.779,10	8.158.196,56	0	0	0	0

FECHA		PRINCIPAL AVAILABLE	SENIOR NOTES	MEZZANIE NOTES	SERIE A PRINCIPAL	VIDA MEDIA	SERIE B PRINCIPAL	VIDA MEDIA
09/11/2009	1	4.452.647	92.706.779,10	8.158.196,56	4.092.506	-5.979.151.497	360.141	-526.165.332
09/12/2009	1	0	88.614.272,95	7.798.056,02	0	0	0	0
09/01/2010	1	0	88.614.272,95	7.798.056,02	0	0	0	0
09/02/2010	1	4.281.298	88.614.272,95	7.798.056,02	3.935.017	-5.387.038.203	346.281	-474.059.362
09/03/2010	1	0	84.679.256,00	7.451.774,53	0	0	0	0
09/04/2010	1	0	84.679.256,00	7.451.774,53	0	0	0	0
09/05/2010	1	4.119.365	84.679.256,00	7.451.774,53	3.786.181	-4.846.311.820	333.184	-426.475.440
09/06/2010	1	0	80.893.074,89	7.118.590,59	0	0	0	0
09/07/2010	1	0	80.893.074,89	7.118.590,59	0	0	0	0
09/08/2010	1	3.959.910	80.893.074,89	7.118.590,59	3.639.623	-4.323.872.490	320.287	-380.500.779
09/09/2010	1	0	77.253.451,58	6.798.303,74	0	0	0	0
09/10/2010	1	0	77.253.451,58	6.798.303,74	0	0	0	0
09/11/2010	1	3.809.324	77.253.451,58	6.798.303,74	3.501.217	-3.837.333.499	308.107	-337.685.348
09/12/2010	1	0	73.752.234,88	6.490.196,67	0	0	0	0
09/01/2011	1	0	73.752.234,88	6.490.196,67	0	0	0	0
09/02/2011	1	3.655.583	73.752.234,88	6.490.196,67	3.359.911	-3.373.350.713	295.672	-296.854.863
09/03/2011	1	0	70.392.323,82	6.194.524,50	0	0	0	0
09/04/2011	1	0	70.392.323,82	6.194.524,50	0	0	0	0
09/05/2011	1	3.513.231	70.392.323,82	6.194.524,50	3.229.072	-2.954.601.254	284.158	-260.004.910
09/06/2011	1	0	67.163.251,41	5.910.366,12	0	0	0	0
09/07/2011	1	0	67.163.251,41	5.910.366,12	0	0	0	0
09/08/2011	1	3.371.626	67.163.251,41	5.910.366,12	3.098.921	-2.550.412.287	272.705	-224.436.281
09/09/2011	1	0	64.064.330,04	5.637.661,04	0	0	0	0
09/10/2011	1	0	64.064.330,04	5.637.661,04	0	0	0	0
09/11/2011	1	3.240.132	64.064.330,04	5.637.661,04	2.978.062	-2.176.963.396	262.069	-191.572.779
09/12/2011	1	0	61.086.267,94	5.375.591,58	0	0	0	0
09/01/2012	1	0	61.086.267,94	5.375.591,58	0	0	0	0
09/02/2012	1	3.107.509	61.086.267,94	5.375.591,58	2.856.166	-1.825.090.142	251.343	-160.607.932
08/03/2012	1	0	58.230.101,83	5.124.248,96	0	0	0	0
08/04/2012	1	0	58.230.101,83	5.124.248,96	0	0	0	0
08/05/2012	1	2.985.062	58.230.101,83	5.124.248,96	2.743.624	-1.508.992.927	241.439	-132.791.378
08/06/2012	1	0	55.486.478,33	4.882.810,09	0	0	0	0
08/07/2012	1	0	55.486.478,33	4.882.810,09	0	0	0	0
08/08/2012	1	2.858.639	55.486.478,33	4.882.810,09	2.627.426	-1.203.361.017	231.213	-105.895.770
08/09/2012	1	0	52.859.052,53	4.651.596,62	0	0	0	0
08/10/2012	1	0	52.859.052,53	4.651.596,62	0	0	0	0
08/11/2012	1	2.743.714	52.859.052,53	4.651.596,62	2.662.117	-974.334.935	81.597	-29.864.364
08/12/2012	1	0	50.196.935,22	4.570.000,00	0	0	0	0
08/01/2013	1	0	50.196.935,22	4.570.000,00	0	0	0	0
08/02/2013	1	2.630.692	50.196.935,22	4.570.000,00	2.630.692	-720.809.592	0	0
09/03/2013	1	0	47.566.243,28	4.570.000,00	0	0	0	0
09/04/2013	1	0	47.566.243,28	4.570.000,00	0	0	0	0
09/05/2013	1	2.526.223	47.566.243,28	4.570.000,00	2.526.223	-464.825.123	0	0
09/06/2013	1	0	45.040.019,78	4.570.000,00	0	0	0	0
09/07/2013	1	0	45.040.019,78	4.570.000,00	0	0	0	0
09/08/2013	1	2.423.797	45.040.019,78	4.570.000,00	2.423.797	-222.989.318	0	0
09/09/2013	1	0	42.616.222,85	4.570.000,00	0	0	0	0
09/10/2013	1	0	42.616.222,85	4.570.000,00	0	0	0	0
09/11/2013	1	2.328.071	42.616.222,85	4.570.000,00	2.328.071	0	0	0
09/12/2013	1	0	40.288.151,38	4.570.000,00	0	0	0	0
09/01/2014	1	0	40.288.151,38	4.570.000,00	0	0	0	0
09/02/2014	1	2.214.949	40.288.151,38	4.570.000,00	2.214.949	203.775.270	0	0
09/03/2014	1	0	38.073.202,79	4.570.000,00	0	0	0	0
09/04/2014	1	0	38.073.202,79	4.570.000,00	0	0	0	0
09/05/2014	1	42.643.207	38.073.202,79	4.570.000,00	38.073.203	6.891.249.705	4.570.000	827.170.000