



## **F.T.H. HIPOTEBANSA XI**

**FRANCISCO FORTES CLAVERO**

**ANALYST**

**SANTANDER DE TITULIZACION, S.G.F.T, S.A.**

**CIUDAD GRUPO SANTANDER**

**28660 BOADILLA DEL MONTE**

**[ffortes@gruposantander.com](mailto:ffortes@gruposantander.com)**

**Tel: 912893290**



NAME OF THE FUND: **F.T.H. HIPOTEBANSA XI**

INFORMATION AT: **QUARTER/SEMESTER:** May 18, 2015 - August 17, 2015 **YEAR:** **2015**

Acting on behalf of Santander de Titulización S.G.F.T., S.A. as General Manager:	Signature:
IGNACIO ORTEGA GAVARA - GENERAL MANAGER	

**I. DATA OF THE FUND**

Constitution Date	November 26, 2002	Paying Agent	BANCO SANTANDER	
Disbursement Date	November 29, 2002	Negotiation Market	AIAF	
Final Date of Redemption	February 15, 2035	Ratings Agencies	MOODY'S ESPAÑA	
			STANDARD & POORS	
Management Company	SANTANDER DE TITULIZACION, S.G.F.T, S.A.	Rating	Initial	Current
Credit Rights 's Seller	BANCO SANTANDER	CLASS A	Aaa/AAA	A1/AA
		CLASS B	A2/A	Ba2/B-

## II. SECURITIES ISSUED CHARGED TO THE FUND: SECURITISATION BONDS

CLASS PRIORITY ISIN CODE	NUM BONDS	NOMINAL			
			Initial	Current	%Act/In
CLASS A ES0338447008	10.408	Nominal per Bond	100.000,00	14.075,20	
		Total Nominal	1.040.800.000,00	146.494.681,60	14,08 %
CLASS B ES0338447016	212	Nominal per Bond	100.000,00	42.842,87	
		Total Nominal	21.200.000,00	9.082.688,44	42,84 %

REDEMPTION AND INTEREST OF THE BONDS					
Current			Next		
Payment Date of the Current Period November 16, 2015			Next Payment Date February 15, 2016		
	Redemption of the Bonds	Gross Interest	Interest Rate	Gross Interest Next Coupon	Net Interest Next Coupon
CLASS A	469,20 €	7,94 €	0,159 %	5,66 €	4,56 €
CLASS B	0,00 €	46,13 €	0,369 %	39,66 €	32,17 €
Accrued amortisation due not payed	0,00 €				
Scheduled Amortisation	NO				



### III. ASSET PURCHASED BY THE FUND: CREDIT RIGHTS

CREDIT RIGHTS	ISSUE DATE	CURRENT DATE
Number of CR's	13.082	4.165
CR's Outstanding to be amortised	1.062.000.934,18	155.577.319,97
CR's Outstanding per Loan to be amortised	81.180,32	37.353,50
Interest Rate	4,46 %	1,24 %

PREPAYMENT RATE	CURRENT SITUATION
Monthly Single Rate	3,24 %
Average Monthly Single Rate	8,98 %
Constant Prepayment Rate from Constitution	8,83 %

CURRENT DELINQUENCY	Up to 1 month	From 1 to 6 months	Greater than 6 months
Debt Due (Principal + Interest)	17.748,70	27.922,26	0,00
Debt to be amortised	0,00	0,00	155.535.668,08
Total Debt	17.748,70	27.922,26	155.535.668,08

**F.T.H. HIPOTEBANSA XI****QUARTERLY BONDS PAYOUT REPORT**

November 16, 2015

<b>BONDS. PRINCIPAL</b>	
Previous Balance	160.460.803,64 €
Principal Amortised	4.883.433,60 €
Outstanding Balance	155.577.370,04 €
% of Initial Balance	14,65%
Principal accrued and unpaid	0,00 €

<b>INTEREST PAID</b>	
CLASS A	82.639,52 €
CLASS B	9.779,56 €
Interest accrued and unpaid	0,00 €

<b>DATA</b>	
Pool Cut-off Date	06/11/2015
Payment Date	16/11/2015
Last Payment Date	17/08/2015
Number of Days (Act/360)	91
Reference Interest Rate (%)	-0,081%
Next Payment Date	15/02/2016

<b>RESIDUAL LIFE (YEARS)</b>		
	<b>INITIAL</b>	<b>16/11/2015</b>
CLASS A	6,7	1,86
CLASS B	12,8	2,25

## F.T.H. HIPOTEBANSA XI

### QUARTERLY COLLATERAL REPORT

November 16, 2015

PRINCIPAL	
Previous Balance	160.460.837,80 €
Principal Amortised	4.883.517,83 €
Outstanding Balance	155.577.319,97 €
Number of Credit Rights	4.165
LTV	32,87%

INTEREST	
Interest received during relevant period	478.601,95 €
Interest accrued during relevant period	462.883,97 €

PRINCIPAL BALANCE IN ARREARS					
	UP to 30 DAYS	30 to 60 DAYS	60 to 90 DAYS	90 to 180 DAYS	> 180 DAYS
Principal Balance in Arrears	16.477,87 €	7.804,68 €	10.516,76 €	6.852,58 €	0,00 €
Interest accrued on Credit Rights in Arrears	1.270,83 €	950,05 €	820,49 €	977,70 €	0,00 €
Outstanding Balance	2.962.256,45 €	629.359,87 €	315.117,53 €	187.550,51 €	1.675.283,36 €
Number of Credit Rights	62	19	7	7	32
% of Outstanding Balance	1,90%	0,40%	0,20%	0,12%	1,08%

**F.T.H. HIPOTEBANSA XI**

**QUARTERLY COLLATERAL REPORT**

**November 16, 2015**

<b>CONTENTIOUS / JUDICIAL</b>	
Last balance	1.221.204,94 €
Difference in Actual Period	491.560,84 €
Current balance	1.712.765,78 €
Contentious CR's number	34

<b>TRANSITORY PROPERTIES</b>	
Last balance	1.238.091,29 €
Difference in Actual Period	101,64 €
Current balance	1.238.192,93 €
Transitory properties CR's number	18

<b>NET LOSS</b>	
Last balance	224.929,41 €
Difference in Actual Period	-651,66 €
Current balance	224.277,75 €

## F.T.H. HIPOTEBANSA XI

### QUARTERLY REPORT - ALLOCATION OF CASH

November 16, 2015

TOTAL CASH RECEIVED END OF PERIOD	5.359.668,99 €
<b>CASH RECEIVED - PRINCIPAL</b>	
Amortisation of Credit Rights	4.886.762,53 €
<b>CASH RECEIVED - INTEREST</b>	
Interest received from Credit Rights	478.601,95 €
Interest received under GIC	-3.364,13 €
<b>CONTENTIOUS</b>	2.759,22 €
<b>INCOMES/EXPENSES OF TRANSTORY PROPERTIES</b>	-5.023,30 €
<b>RESERVE FUNDS</b>	0,00 €
<b>OTHERS</b>	-67,28 €

TREASURY ACCOUNT STATEMENT	4.802.364,74 €
<b>PRINCIPAL RESERVE FUND</b>	
Previous Balance	1.717.891,79 €
Period utilization	0,00 €
Outstanding Balance	1.717.891,79 €
<b>PRINCIPAL RESERVE FUND</b>	
Previous Balance	3.084.472,95 €
Period utilization	0,00 €
Outstanding Balance	3.084.472,95 €
<b>WITHHOLDING TAXES</b>	0,00 €
<b>ISSUE EXPENSES WITHHELD</b>	0,00 €
<b>OTHERS</b>	0,00 €

TOTAL CASH PAID END OF PERIOD	5.359.668,99 €
ORDINARY EXPENSES	363,00 €
MANAGEMENT FEE	19.170,00 €
SWAP A COLLECTION	-82.652,45 €
SWAP A PAYMENT	347.702,41 €
SWAP B COLLECTION	-9.780,54 €
SWAP B PAYMENT	20.862,15 €
CLASS A INTEREST	82.639,52 €
CLASS A REDEMPTION	4.883.433,60 €
CLASS B REDEMPTION	0,00 €
CLASS B INTEREST	9.779,56 €
SUBORDINATED LOAN A INTEREST	10.923,60 €
SUBORDINATED LOAN B INTEREST	0,00 €
SUBORDINATED LOAN A REDEMPTION	0,00 €
SUBORDINATED LOAN B REDEMPTION	0,00 €
ADMINISTRATION FEE	6.000,00 €
VARIABLE FEE	71.228,14 €



## F.T.H. HIPOTEBANSA XI

### CREDIT ENHANCEMENT AND SUBORDINATED LOAN

November 16, 2015

CREDIT ENHANCEMENT		
CONCEPTS	INITIAL	November 16, 2015
SUBORDINATED ISSUE	2,00 %	5,84%
PRINCIPAL RESERVE FUND	10.620.000,00 € (1,00 %)	1.717.891,79 € 1,10%
SECONDARY RESERVE FUND	5.310.000,00 € (0,50 %)	3.084.472,95 € 1,98%

SUBORDINATED LOANS		
CONCEPTS	INITIAL	November 16, 2015
SUBORDINATED LOAN A		
Total Outstanding Subordinated Loan	17.045.178,00 €	4.804.216,20 €
Interest Rate	3,860 %	0,640%

## F.T.H. HIPOTEBANSA XI

### TRIGGERS OF THE MODEL

November 16, 2015

RESERVE FUND's TRIGGERS	
IF 1) IS HIGHER THAN 2) RESERVE FUNDS WILL NOT BE REDUCED	
1) 99% PREVIOUS BTA BALANCE	158.856.195,60 €
2) CREDIT RIGHTS OUTSTANDING BALANCE (ARREARS < 90 DAYS) + CR'S REDEMPTION	158.601.248,63 €

RESERVE FUND HAS NOT BEEN REDUCED

BOND's TRIGGERS	
IF 1) IS HIGHER THAN 2) CLASS B IS NOT AMORTISED	
1) CREDIT RIGHTS IN ARREARS OVER 90 DAYS	1.862.833,87 €
2) 4% CREDIT RIGHTS OUTSTANDING BALANCE	6.223.092,80 €

CLASS B IS NOT AMORTIZED AS RESERVE FUNDS HAVE NOT BEEN REDUCED

AGREEMENT	COUNTERPARTY	RATING AGENCY	MINIMUM RATING REQUIRED	CURRENT RATING
CUENTA TESORERÍA	BANCO SANTANDER	MOODYS	P-1 c/p	A3 l/p P-2 c/p
		S&P	A-1 c/p A l/p	A- l/p A-2 c/p
SWAP	BANCO SANTANDER	MOODYS	A2 l/p P-1 c/p	A3 l/p P-2 c/p
		S&P	A- l/p	A- l/p A-2 c/p

COUNTERPARTY DOES NOT HAVE THE MINIMUM RATING REQUIRED. TREASURY ACCOUNT HAS BEEN TRANSFERRED TO A COUNTERPARTY WITH MINIMUM RATING REQUIRED. SWAP DEPOSIT HAS BEEN DEPOSITED IN TREASURY ACCOUNT

# F.T.H. HIPOTEBANSA XI

## DEFINITIONS

November 16, 2015

**POOL CUT-OFF DATE** Means the date in which the Gestora will carry out the necessary calculations, on behalf of the Fund, for the distribution of the available funds at this date, according with the Order of Priority of Payments.  
All the information regarding the Assets (Outstanding Balance of the Credit Rights, arrears' tables, transitory properties, stratification tables, etc.) are referred to this mentioned date.

**NET LOSSES** Those loans which the Originator considers that will not recover (net of recoveries).

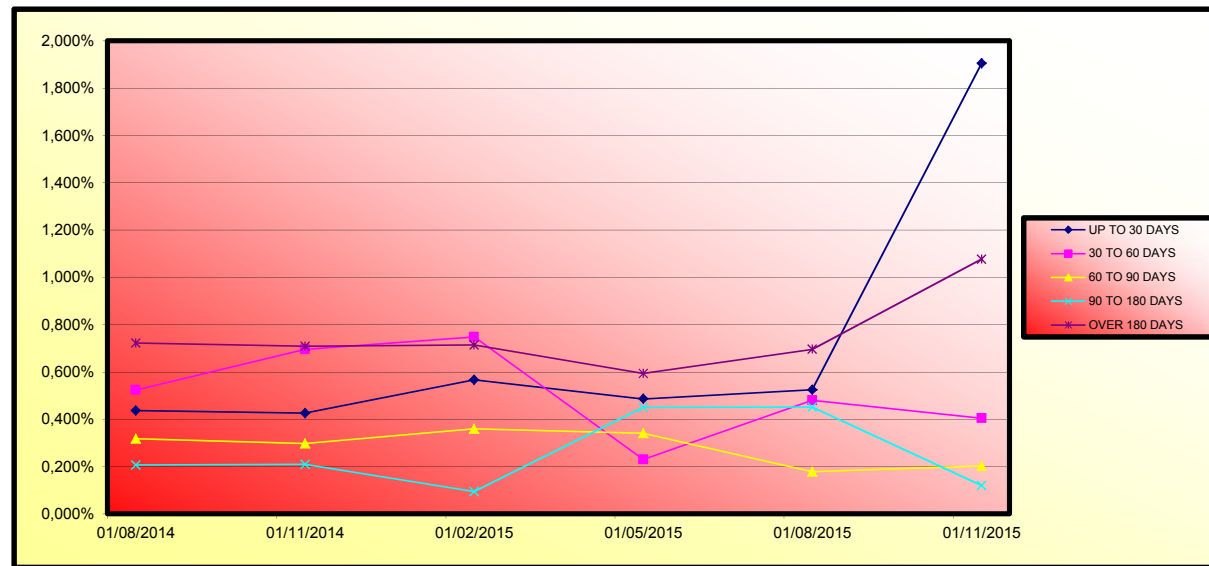
**TRANSITORY PROPERTIES** Those assets in the balance of the Fund as a consequence of a judicial or non-judicial process.

**CONTENTIOUS / JUDICIAL** Loans in which the Originator will take legal actions. This amount is included in the different buckets in arrears.

**FONDO DE TITULIZACIÓN DE ACTIVOS  
HIPOTEBANSA 11**

Report date: November 16th 2015

ARREARS PERFORMANCE						
	08/08/2014	07/11/2014	08/02/2015	08/05/2015	10/08/2015	06/11/2015
<b>UP TO 30 DAYS</b>	0,436%	0,426%	0,567%	0,486%	0,524%	1,904%
<b>30 TO 60 DAYS</b>	0,523%	0,695%	0,748%	0,230%	0,481%	0,405%
<b>60 TO 90 DAYS</b>	0,317%	0,298%	0,359%	0,341%	0,179%	0,203%
<b>90 TO 180 DAYS</b>	0,207%	0,210%	0,095%	0,450%	0,452%	0,121%
<b>OVER 180 DAYS</b>	0,723%	0,708%	0,714%	0,594%	0,696%	1,077%



**FONDO DE TITULIZACIÓN DE ACTIVOS  
HIPOTEBANSA 11**

LOAN TO VALUE

Report date: November 16th 2015

LTV				
	OUTS, BALANCE	% OUTSTANDING	NUMBER LOANS	% NUM LOANS
<b>0-9,99</b>	5.826.279,19 €	3,74%	763	18,32%
<b>10-19,99</b>	11.490.629,66 €	7,39%	544	13,06%
<b>20-29,99</b>	20.536.608,30 €	13,20%	577	13,85%
<b>30-39,99</b>	29.351.502,17 €	18,87%	732	17,58%
<b>40-49,99</b>	30.925.150,80 €	19,88%	634	15,22%
<b>50-59,99</b>	30.752.846,55 €	19,77%	513	12,32%
<b>60-69,99</b>	16.232.802,28 €	10,43%	243	5,83%
<b>70-79,99</b>	7.047.909,49 €	4,53%	110	2,64%
<b>80-89,99</b>	3.413.591,53 €	2,19%	49	1,18%

PREPAGOS - HIPOTEBANSA 11

16-nov-15

Fecha	Balance Teórico	Balance Real	0,77% Vector Prepago	Tasa Prepago Mensual desde Inicio	Tasa Prepago Anualizada desde Inicio	Tasa Prepago Mensual	Tasa Prepago Mensual Anualizada	Outstanding after prepayment	Principal Available
					8,98%				1.062.000.934,18
1	1.062.000.934,18		100,00%	100,00%				1.062.000.934,18	
2	1.059.170.325,97	1.057.044.700,19	99,23%	99,80%	0,20%	2,38%	0,20%	2,38%	1.057.044.700,2
3	1.056.330.372,16	1.048.809.339,04	98,47%	99,29%	0,36%	4,20%	0,51%	5,98%	1.048.809.339,0
4	1.053.479.859,47	1.037.938.978,94	97,72%	98,52%	0,49%	5,77%	0,77%	8,84%	1.037.938.978,9
5	1.050.618.748,66	1.030.003.541,32	96,97%	98,04%	0,49%	5,77%	0,49%	5,77%	1.030.003.541,3
6	1.047.747.000,34	1.020.972.745,34	96,22%	97,44%	0,52%	6,02%	0,61%	7,02%	1.020.972.745,3
7	1.044.864.574,97	1.010.816.263,76	95,48%	96,74%	0,55%	6,41%	0,72%	8,32%	1.010.816.263,8
8	1.041.971.432,87	1.003.440.878,07	94,75%	96,30%	0,54%	6,26%	0,45%	5,31%	1.003.440.878,1
9	1.039.067.682,10	993.186.004,40	94,03%	95,58%	0,56%	6,55%	0,75%	8,59%	993.186.004,4
10	1.036.153.135,33	982.097.638,62	93,30%	94,78%	0,59%	6,89%	0,84%	9,61%	982.097.638,6
11	1.033.227.752,45	975.159.555,45	92,59%	94,38%	0,58%	6,71%	0,43%	4,99%	975.159.555,5
12	1.030.291.493,18	966.431.750,97	91,88%	93,80%	0,58%	6,74%	0,61%	7,11%	966.431.751,0
13	1.027.344.317,10	953.436.130,22	91,17%	92,81%	0,62%	7,19%	1,06%	12,02%	953.436.130,2
14	1.024.386.183,63	944.508.540,63	90,47%	92,20%	0,62%	7,22%	0,65%	7,53%	944.508.540,6
15	1.021.417.800,39	930.185.073,01	89,78%	91,07%	0,67%	7,71%	1,23%	13,80%	930.185.073,0
16	1.018.438.380,94	921.831.922,03	89,09%	90,51%	0,66%	7,66%	0,61%	7,06%	921.831.922,0
17	1.015.447.884,27	907.539.469,11	88,41%	89,37%	0,70%	8,08%	1,26%	14,12%	907.539.469,1
18	1.012.446.269,20	895.504.918,67	87,73%	88,45%	0,72%	8,30%	1,03%	11,72%	895.504.918,7
19	1.009.433.494,41	887.418.518,82	87,06%	87,91%	0,71%	8,23%	0,61%	7,05%	887.418.518,8
20	1.006.409.518,43	876.263.237,75	86,39%	87,07%	0,73%	8,37%	0,96%	10,93%	876.263.237,8
21	1.003.377.044,29	867.495.065,22	85,73%	86,46%	0,72%	8,36%	0,70%	8,10%	867.495.065,2
22	1.000.333.295,73	857.633.882,55	85,07%	85,73%	0,73%	8,42%	0,84%	9,58%	857.633.882,6
23	997.278.230,87	804.308.410,78	84,42%	80,65%	0,97%	11,07%	5,93%	51,98%	804.308.410,8
24	994.211.807,63	795.545.591,13	83,77%	80,02%	0,96%	10,98%	0,78%	9,02%	795.545.591,1
25	991.133.983,79	782.598.464,39	83,13%	78,96%	0,98%	11,14%	1,32%	14,76%	782.598.464,4
26	988.044.717,00	770.977.781,30	82,49%	78,03%	0,99%	11,23%	1,18%	13,24%	770.977.781,3
27	984.948.536,41	754.651.271,17	81,85%	76,62%	1,02%	11,57%	1,81%	19,68%	754.651.271,2
28	981.840.844,62	742.323.934,82	81,23%	75,61%	1,03%	11,69%	1,32%	14,76%	742.323.934,8
29	978.721.598,87	731.960.780,33	80,60%	74,79%	1,03%	11,71%	1,08%	12,24%	731.960.780,3
30	975.590.756,20	718.984.542,85	79,99%	73,70%	1,05%	11,86%	1,46%	16,15%	718.984.542,9
31	972.448.273,51	706.885.021,02	79,37%	72,69%	1,06%	11,98%	1,37%	15,21%	706.885.021,0
32	969.294.107,55	689.240.977,47	78,76%	71,11%	1,09%	12,37%	2,18%	23,23%	689.240.977,5
33	966.131.551,58	678.185.756,46	78,16%	70,20%	1,10%	12,43%	1,28%	14,34%	678.185.756,5
34	962.957.237,72	666.214.919,67	77,56%	69,18%	1,11%	12,54%	1,44%	15,99%	666.214.919,7
35	959.771.122,28	658.165.638,87	76,96%	68,58%	1,10%	12,47%	0,88%	10,07%	658.165.638,9
36	956.573.161,40	648.651.369,26	76,37%	67,81%	1,10%	12,47%	1,12%	12,60%	648.651.369,3
37	953.363.311,04	638.242.081,65	75,79%	66,95%	1,11%	12,52%	1,27%	14,26%	638.242.081,7
38	950.141.527,02	627.954.600,79	75,21%	66,09%	1,11%	12,57%	1,28%	14,31%	627.954.600,8
39	946.909.556,71	616.446.413,36	74,63%	65,10%	1,12%	12,68%	1,50%	16,56%	616.446.413,4
40	943.665.570,52	605.695.422,90	74,06%	64,19%	1,13%	12,75%	1,41%	15,63%	605.695.422,9
41	940.409.523,79	594.529.487,85	73,49%	63,22%	1,14%	12,85%	1,50%	16,62%	594.529.487,9
42	937.141.371,71	584.960.675,74	72,93%	62,42%	1,14%	12,88%	1,27%	14,18%	584.960.675,7
43	933.861.069,29	575.086.536,35	72,37%	61,58%	1,15%	12,94%	1,34%	14,97%	575.086.536,4
44	930.568.571,35	565.932.803,00	71,81%	60,82%	1,15%	12,96%	1,24%	13,94%	565.932.803,0
45	927.272.799,87	558.118.316,87	71,26%	60,19%	1,15%	12,93%	1,03%	11,69%	558.118.316,9
46	923.964.775,39	550.497.713,95	70,71%	59,58%	1,14%	12,90%	1,01%	11,49%	550.497.714,0
47	920.644.452,37	542.920.794,56	70,17%	58,97%	1,14%	12,87%	1,02%	11,58%	542.920.794,6
48	917.311.785,10	536.549.647,93	69,63%	58,49%	1,13%	12,80%	0,81%	9,35%	536.549.647,9
49	913.966.727,70	529.463.736,52	69,10%	57,93%	1,13%	12,76%	0,96%	10,93%	529.463.736,5
50	910.609.234,12	520.643.753,84	68,57%	57,18%	1,13%	12,80%	1,30%	14,57%	520.643.753,8
51	907.242.586,08	512.492.911,52	68,04%	56,49%	1,14%	12,81%	1,20%	13,49%	512.492.911,5
52	903.863.421,61	505.142.636,37	67,52%	55,89%	1,13%	12,79%	1,07%	12,07%	505.142.636,4
53	900.471.694,20	498.780.135,48	67,00%	55,39%	1,13%	12,74%	0,89%	10,15%	498.780.135,5
54	897.067.357,15	490.788.190,07	66,49%	54,71%	1,13%	12,76%	1,23%	13,79%	490.788.190,1
55	893.650.363,60	485.583.354,72	65,98%	54,34%	1,12%	12,68%	0,68%	7,89%	485.583.354,7
56	890.220.666,50	479.137.057,63	65,47%	53,82%	1,12%	12,64%	0,95%	10,79%	479.137.057,6
57	886.836.366,45	471.982.288,71	64,97%	53,22%	1,12%	12,64%	1,12%	12,61%	471.982.288,7
58	883.439.484,37	465.857.195,81	64,47%	52,73%	1,12%	12,64%	0,92%	10,48%	465.857.195,8
59	880.029.973,50	461.998.838,58	63,98%	52,50%	1,10%	12,48%	0,44%	5,20%	461.998.838,6
60	876.607.786,89	458.046.611,10	63,49%	52,25%	1,09%	12,37%	0,47%	5,48%	458.046.611,1
61	873.172.877,43	452.371.234,64	63,00%	51,81%	1,09%	12,32%	0,85%	9,74%	452.371.234,6
62	869.725.197,85	448.356.935,35	62,52%	51,55%	1,08%	12,22%	0,49%	5,78%	448.356.935,4
63	866.268.177,14	439.408.095,80	62,04%	50,72%	1,09%	12,31%	1,60%	17,65%	439.408.095,8
64	862.798.304,13	432.865.132,35	61,56%	50,17%	1,09%	12,31%	1,09%	12,35%	432.865.132,4
65	859.315.531,03	428.713.233,91	61,09%	49,89%	1,08%	12,22%	0,56%	6,49%	428.713.233,9
66	855.819.809,91	423.809.725,84	60,62%	49,52%	1,08%	12,17%	0,74%	8,53%	423.809.725,8
67	852.311.092,64	417.767.295,59	60,15%	49,02%	1,07%	12,16%	1,02%	11,58%	417.767.295,6
68	848.789.330,93	414.119.779,42	59,69%	48,79%	1,07%	12,06%	0,46%	5,40%	414.119.779,4
69	845.278.456,53	408.387.262,86	59,24%	48,31%	1,06%	12,05%	0,97%	11,09%	408.387.262,9
70	841.754.529,66	399.894.858,15	58,78%	47,51%	1,07%	12,14%	1,67%	18,29%	399.894.858,2
71	838.217.501,81	397.104.484,05	58,33%	47,37%	1,06%	12,02%	0,28%	3,29%	397.104.484,1
72	834.667.324,30	392.635.300,03	57,88%	47,04%	1,06%	11,97%	0,70%	8,14%	392.635.300,0
73	831.103.948,24	388.690.866,11	57,44%	46,77%	1,05%	11,90%	0,58%	6,74%	388.690.866,1
74	827.527.324,58	385.413.737,73	57,00%	46,57%	1,04%	11,80%	0,41%	4,86%	385.413.737,7
75	823.941.709,31	379.887.693,57	56,56%	46,11%	1,04%	11,80%	1,00%	11,41%	379.887.693,6
76	820.342.763,79	376.132.280,53	56,13%	45,85%	1,03%	11,73%	0,55%	6,45%	376.132.280,5
77	816.730.438,47	373.184.766,62	55,70%	45,69%	1,03%	11,63%	0,34%	4,06%	373.184.766,6
78	813.104.683,62	370.712.910,40	55,27%	45,59%	1,01%	11,52%	0,22%	2,60%	370.712.910,4
79	809.465.449,34	366.289.849,16	54,84%	45,25%	1,01%	11,48%	0,75%	8,63%	366.289.849,2
80	805.812.685,52	362.559.930,03	54,42%	44,99%	1,01%	11,42%	0,57%	6,63%	362.559.930,0
81	802.186.527,76	357.724.978,07	54,01%	44,59%	1,00%	11,41%	0,89%	10,15%	357.724.978,1
82	798.546.889,06	353.824.448,77	53,59%	44,31%	1,00%	11,36%	0,64%	7,41%	353.824.448,8
83	794.893.719,32	350.570.091,65	53,18%	44,10%	0,99%	11,29%	0,46%	5,43%	350.570.091,7
84	791.226.968,25	347.229.237,07	52,77%	43,88%	0,99%	11,23%	0,49%	5,77%	347.229.237,1
85	787.546.585,37	340.966.922,50	52,37%	43,29%	0,99%	11,27%	1,34%	14,99%	340.966.922,5
86	783.852.520,02	337.271.256,12	51,97%	43,03%	0,99%	11,22%	0,62%	7,17%	337.271.256,1

87	1-ene-10	780.152.853,81	331.682.915,73	51,57%	42,52%	0,99%	11,25%	1,19%	13,39%	331.682.915,7	
88	1-feb-10	776.439.433,47	328.381.940,19	51,17%	42,29%	0,98%	11,19%	0,52%	6,08%	328.381.940,2	12.584.982,31
89	1-mar-10	772.712.207,86	324.299.710,78	50,78%	41,97%	0,98%	11,17%	0,77%	8,82%	324.299.710,8	
90	1-abr-10	768.971.125,68	320.856.666,58	50,39%	41,73%	0,98%	11,12%	0,58%	6,75%	320.856.666,6	
91	1-may-10	765.216.135,42	317.821.724,68	50,00%	41,53%	0,97%	11,06%	0,46%	5,38%	317.821.724,7	10.560.215,51
92	1-jun-10	761.447.185,41	315.309.819,68	49,62%	41,41%	0,96%	10,98%	0,30%	3,63%	315.309.819,7	
93	1-jul-10	757.737.575,21	312.506.764,97	49,24%	41,24%	0,96%	10,91%	0,40%	4,74%	312.506.765,0	
94	1-ago-10	754.014.173,91	307.861.260,43	48,86%	40,83%	0,96%	10,92%	1,00%	11,36%	307.861.260,4	9.960.464,25
95	1-sep-10	750.276.930,25	305.310.872,01	48,49%	40,69%	0,95%	10,84%	0,33%	3,94%	305.310.872,0	
96	1-oct-10	746.525.792,79	302.266.230,38	48,11%	40,49%	0,95%	10,79%	0,50%	5,83%	302.266.230,4	
97	1-nov-10	742.760.709,88	299.713.677,26	47,75%	40,35%	0,94%	10,72%	0,34%	4,03%	299.713.677,3	8.147.583,17
98	1-dic-10	738.981.629,70	296.591.158,42	47,38%	40,14%	0,94%	10,68%	0,54%	6,24%	296.591.158,4	
99	1-ene-11	735.193.927,19	291.262.819,72	47,02%	39,62%	0,94%	10,72%	1,29%	14,43%	291.262.819,7	
100	1-feb-11	731.392.143,34	288.900.230,44	46,66%	39,50%	0,93%	10,65%	0,30%	3,49%	288.900.230,4	10.813.446,82
101	1-mar-11	727.576.225,80	286.264.570,10	46,30%	39,34%	0,93%	10,59%	0,39%	4,61%	286.264.570,1	
102	1-abr-11	723.746.122,06	283.436.064,18	45,94%	39,16%	0,92%	10,54%	0,46%	5,43%	283.436.064,2	
103	1-may-11	719.901.779,38	280.960.059,59	45,59%	39,03%	0,92%	10,48%	0,34%	4,05%	280.960.059,6	7.940.170,85
104	1-jun-11	716.043.144,85	278.312.314,21	45,24%	38,87%	0,91%	10,43%	0,41%	4,79%	278.312.314,2	
105	1-jul-11	712.190.655,82	275.761.660,14	44,89%	38,72%	0,91%	10,37%	0,38%	4,47%	275.761.660,1	
106	1-ago-11	708.323.844,65	273.279.092,90	44,55%	38,58%	0,90%	10,31%	0,36%	4,23%	273.279.092,9	7.680.966,69
107	1-sep-11	704.442.658,13	270.935.369,97	44,21%	38,46%	0,90%	10,25%	0,31%	3,67%	270.935.370,0	
108	1-oct-11	700.547.042,80	268.556.921,92	43,87%	38,34%	0,89%	10,19%	0,33%	3,85%	268.556.921,9	
109	1-nov-11	696.636.945,06	266.425.568,69	43,53%	38,24%	0,89%	10,13%	0,24%	2,80%	266.425.568,7	6.853.524,21
110	1-dic-11	692.712.311,08	263.629.031,32	43,20%	38,06%	0,88%	10,09%	0,49%	5,71%	263.629.031,3	
111	1-ene-12	688.784.629,71	259.676.451,07	42,87%	37,70%	0,88%	10,10%	0,94%	10,69%	259.676.451,1	
112	1-feb-12	684.842.346,75	256.892.369,56	42,54%	37,51%	0,88%	10,06%	0,50%	5,87%	256.892.369,6	9.533.199,13
113	1-mar-12	680.885.407,92	253.949.065,00	42,21%	37,30%	0,88%	10,03%	0,57%	6,64%	253.949.065,0	
114	1-abr-12	676.913.758,75	251.104.281,26	41,89%	37,10%	0,87%	10,00%	0,54%	6,29%	251.104.281,3	
115	1-may-12	672.927.344,57	247.859.348,30	41,57%	36,83%	0,87%	9,98%	0,71%	8,17%	247.859.348,3	9.033.021,26
116	1-jun-12	668.926.110,50	244.993.940,46	41,25%	36,62%	0,87%	9,95%	0,56%	6,57%	244.993.940,5	
117	1-jul-12	665.347.651,79	242.336.402,87	40,93%	36,42%	0,87%	9,92%	0,55%	6,43%	242.336.402,9	
118	1-ago-12	661.755.889,43	239.852.008,79	40,62%	36,24%	0,86%	9,89%	0,49%	5,70%	239.852.008,8	8.007.339,51
119	1-sep-12	658.150.773,97	237.561.527,78	40,30%	36,10%	0,86%	9,84%	0,41%	4,84%	237.561.527,8	
120	1-oct-12	654.532.255,78	235.276.281,90	40,00%	35,95%	0,86%	9,80%	0,41%	4,86%	235.276.281,9	
121	1-nov-12	650.900.285,05	232.665.500,60	39,69%	35,75%	0,85%	9,78%	0,56%	6,49%	232.665.500,6	7.186.508,19
122	1-dic-12	647.254.811,77	229.563.429,83	39,38%	35,47%	0,85%	9,77%	0,78%	8,94%	229.563.429,8	
123	1-ene-13	643.606.678,16	226.412.789,50	39,08%	35,18%	0,85%	9,77%	0,81%	9,34%	226.412.789,5	
124	1-feb-13	639.944.981,93	224.148.004,03	38,78%	35,03%	0,85%	9,73%	0,43%	5,08%	224.148.004,0	8.517.496,57
125	1-mar-13	636.269.672,68	221.948.739,67	38,48%	34,88%	0,85%	9,69%	0,41%	4,80%	221.948.739,7	
126	1-abr-13	632.580.699,82	219.391.546,83	38,19%	34,68%	0,84%	9,67%	0,58%	6,69%	219.391.546,8	
127	1-may-13	628.878.012,55	217.174.140,11	37,90%	34,53%	0,84%	9,63%	0,43%	5,02%	217.174.140,1	6.973.863,92
128	1-jun-13	625.161.559,92	215.049.584,48	37,61%	34,40%	0,84%	9,59%	0,39%	4,58%	215.049.584,5	
129	1-jul-13	621.456.630,52	212.809.646,44	37,32%	34,24%	0,83%	9,56%	0,45%	5,29%	212.809.646,4	
130	1-ago-13	617.737.927,43	210.659.136,59	37,03%	34,10%	0,83%	9,52%	0,41%	4,86%	210.659.136,6	6.515.003,52
131	1-sep-13	614.005.399,43	208.912.559,65	36,75%	34,02%	0,83%	9,47%	0,23%	2,68%	208.912.559,7	
132	1-oct-13	610.258.995,15	206.556.591,52	36,47%	33,85%	0,82%	9,45%	0,52%	6,07%	206.556.591,5	
133	1-nov-13	606.498.663,03	204.578.485,37	36,19%	33,73%	0,82%	9,41%	0,34%	4,05%	204.578.485,4	6.080.651,22
134	1-dic-13	602.724.351,28	202.437.830,58	35,91%	33,59%	0,82%	9,37%	0,43%	5,00%	202.437.830,6	
135	1-ene-14	598.945.359,53	199.455.990,35	35,63%	33,30%	0,82%	9,38%	0,85%	9,75%	199.455.990,4	
136	1-feb-14	595.152.318,81	197.425.214,43	35,36%	33,17%	0,81%	9,34%	0,39%	4,55%	197.425.214,4	7.153.270,94
137	1-mar-14	591.345.176,91	194.082.513,37	35,09%	32,82%	0,82%	9,36%	1,06%	12,01%	194.082.513,4	
138	1-abr-14	587.523.881,41	191.766.394,14	34,82%	32,64%	0,81%	9,34%	0,55%	6,41%	191.766.394,1	
139	1-may-14	583.688.379,71	189.955.295,88	34,55%	32,54%	0,81%	9,30%	0,29%	3,47%	189.955.295,9	7.469.918,55
140	1-jun-14	579.838.619,01	187.970.954,96	34,29%	32,42%	0,81%	9,27%	0,39%	4,55%	187.970.955,0	
141	1-jul-14	576.249.599,09	184.376.022,73	34,02%	32,00%	0,81%	9,31%	1,30%	14,55%	184.376.022,7	
142	1-ago-14	572.647.236,25	183.915.580,70	33,76%	32,12%	0,80%	9,21%	-0,38%	-4,63%	183.915.580,7	6.039.715,18
143	1-sep-14	569.031.480,92	182.088.534,10	33,50%	32,00%	0,80%	9,18%	0,36%	4,29%	182.088.534,1	
144	1-oct-14	565.402.283,32	179.967.990,52	33,25%	31,83%	0,80%	9,16%	0,53%	6,18%	179.967.990,5	
145	1-nov-14	561.759.593,48	178.166.408,27	32,99%	31,72%	0,79%	9,13%	0,36%	4,23%	178.166.408,3	5.749.172,43
146	1-dic-14	558.103.361,25	176.557.932,40	32,74%	31,64%	0,79%	9,09%	0,25%	3,00%	176.557.932,4	
147	1-ene-15	554.443.005,38	173.697.923,48	32,49%	31,33%	0,79%	9,10%	0,97%	11,04%	173.697.923,5	
148	1-feb-15	550.769.041,47	171.789.178,86	32,24%	31,19%	0,79%	9,07%	0,44%	5,14%	171.789.178,9	6.377.229,41
149	1-mar-15	547.081.418,95	169.802.765,32	31,99%	31,04%	0,79%	9,05%	0,49%	5,72%	169.802.765,3	
150	1-abr-15	543.380.087,04	166.653.950,29	31,75%	30,67%	0,79%	9,08%	1,19%	13,34%	166.653.950,3	
151	1-may-15	539.664.994,80	165.935.890,49	31,50%	30,75%	0,78%	9,00%	-0,25%	-3,10%	165.935.890,5	5.853.288,37
152	1-jun-15	535.936.091,09	164.426.688,35	31,26%	30,68%	0,78%	8,96%	0,22%	2,61%	164.426.688,4	
153	1-jul-15	532.220.881,90	162.349.402,67	31,02%	30,50%	0,78%	8,95%	0,57%	6,68%	162.349.402,7	
154	1-ago-15	528.491.860,80	160.460.837,80	30,78%	30,36%	0,78%	8,93%	0,47%	5,45%	160.460.837,8	5.475.052,69
155	1-sep-15	524.748.976,46	158.901.916,90	30,55%	30,28%	0,77%	8,89%	0,27%	3,14%	158.901.916,9	
156	1-oct-15	520.992.177,34	157.141.696,30	30,31%	30,16%	0,77%	8,86%	0,39%	4,63%	157.141.696,3	
157	1-nov-15	517.221.411,74	155.577.319,97	30,08%	30,08%	0,77%	8,83%	0,27%	3,24%	155.577.320,0	4.883.517,83

1.062.000.000,00

6,00%

0,75%

69285,54

VIDA RESIDUAL DESDE

16-nov-15

1,86

2,25

FECHA	Principal disponible para la amortización	SERIE A	SERIE B	SERIE A		SERIE B	
				PRINCIPAL	VIDA MEDIA	PRINCIPAL	VIDA MEDIA
15-dic-02	0,00	1.040.800.000,00	21.200.000,00	0,00	0,00	0,00	0,00
15-ene-03	0,00	1.040.800.000,00	21.200.000,00	0,00	0,00	0,00	0,00
15-feb-03	24.061.955,24	1.040.800.000,00	21.200.000,00	24.061.955,24	-112.056.525.552,68	0,00	0,00
15-mar-03	0,00	1.016.738.044,76	21.200.000,00	0,00	0,00	0,00	0,00
15-abr-03	0,00	1.016.738.044,76	21.200.000,00	0,00	0,00	0,00	0,00
15-may-03	27.122.715,18	1.016.738.044,76	21.200.000,00	27.122.715,18	-123.896.562.942,24	0,00	0,00
15-jun-03	0,00	989.615.329,58	21.200.000,00	0,00	0,00	0,00	0,00
15-jul-03	0,00	989.615.329,58	21.200.000,00	0,00	0,00	0,00	0,00
15-ago-03	28.718.625,14	989.615.329,58	21.200.000,00	28.718.625,14	-128.544.566.126,64	0,00	0,00
15-sep-03	0,00	960.896.704,44	21.200.000,00	0,00	0,00	0,00	0,00
15-oct-03	0,00	960.896.704,44	21.200.000,00	0,00	0,00	0,00	0,00
15-nov-03	28.661.508,40	960.896.704,44	21.200.000,00	28.661.508,40	-125.652.052.825,60	0,00	0,00
15-dic-03	0,00	932.235.196,04	21.200.000,00	0,00	0,00	0,00	0,00
15-ene-04	0,00	932.235.196,04	21.200.000,00	0,00	0,00	0,00	0,00
15-feb-04	31.604.208,19	932.235.196,04	21.200.000,00	31.604.208,19	-135.645.261.551,48	0,00	0,00
15-mar-04	0,00	900.630.987,85	21.200.000,00	0,00	0,00	0,00	0,00
15-abr-04	0,00	900.630.987,85	21.200.000,00	0,00	0,00	0,00	0,00
15-may-04	34.413.403,21	900.630.987,85	21.200.000,00	34.413.403,21	-144.605.120.288,42	0,00	0,00
15-jun-04	0,00	866.217.584,64	21.200.000,00	0,00	0,00	0,00	0,00
15-jul-04	0,00	866.217.584,64	21.200.000,00	0,00	0,00	0,00	0,00
15-ago-04	29.784.636,27	866.217.584,64	21.200.000,00	29.784.636,27	-122.414.855.069,70	0,00	0,00
15-sep-04	0,00	836.432.948,37	21.200.000,00	0,00	0,00	0,00	0,00
15-oct-04	0,00	836.432.948,37	21.200.000,00	0,00	0,00	0,00	0,00
15-nov-04	75.035.418,16	836.432.948,37	21.200.000,00	75.035.418,16	-301.492.310.166,88	0,00	0,00
15-dic-04	0,00	761.397.530,21	21.200.000,00	0,00	0,00	0,00	0,00
15-ene-05	0,00	761.397.530,21	21.200.000,00	0,00	0,00	0,00	0,00
15-feb-05	40.274.529,57	761.397.530,21	21.200.000,00	40.274.529,57	-158.117.803.091,82	0,00	0,00
15-mar-05	0,00	721.123.000,64	21.200.000,00	0,00	0,00	0,00	0,00
15-abr-05	0,00	721.123.000,64	21.200.000,00	0,00	0,00	0,00	0,00
15-may-05	35.438.913,80	721.123.000,64	21.200.000,00	35.438.913,80	-135.979.112.250,60	0,00	0,00
15-jun-05	0,00	685.684.086,84	21.200.000,00	0,00	0,00	0,00	0,00
15-jul-05	0,00	685.684.086,84	21.200.000,00	0,00	0,00	0,00	0,00
15-ago-05	40.670.101,35	685.684.086,84	21.200.000,00	40.670.101,35	-152.309.529.555,75	0,00	0,00
15-sep-05	0,00	645.013.985,49	21.200.000,00	0,00	0,00	0,00	0,00
15-oct-05	0,00	645.013.985,49	21.200.000,00	0,00	0,00	0,00	0,00
15-nov-05	27.972.838,02	645.013.985,49	21.200.000,00	27.972.838,02	-102.184.777.287,06	0,00	0,00
15-dic-05	0,00	617.041.147,47	21.200.000,00	0,00	0,00	0,00	0,00
15-ene-06	0,00	617.041.147,47	21.200.000,00	0,00	0,00	0,00	0,00
15-feb-06	32.546.658,75	617.041.147,47	21.200.000,00	32.546.658,75	-115.898.651.808,75	0,00	0,00
15-mar-06	0,00	584.494.488,72	21.200.000,00	0,00	0,00	0,00	0,00
15-abr-06	0,00	584.494.488,72	21.200.000,00	0,00	0,00	0,00	0,00
15-may-06	30.608.886,55	584.494.488,72	21.200.000,00	30.608.886,55	-106.274.054.101,60	0,00	0,00
15-jun-06	0,00	553.885.602,17	21.200.000,00	0,00	0,00	0,00	0,00
15-jul-06	0,00	553.885.602,17	21.200.000,00	0,00	0,00	0,00	0,00
15-ago-06	24.588.822,40	553.885.602,17	21.200.000,00	24.588.822,40	-83.110.219.712,00	0,00	0,00
15-sep-06	0,00	529.296.779,77	21.200.000,00	0,00	0,00	0,00	0,00
15-oct-06	0,00	529.296.779,77	21.200.000,00	0,00	0,00	0,00	0,00
15-nov-06	21.033.977,43	529.296.779,77	21.200.000,00	21.033.977,43	-69.159.717.789,84	0,00	0,00
15-dic-06	0,00	508.262.802,34	21.200.000,00	0,00	0,00	0,00	0,00
15-ene-07	0,00	508.262.802,34	21.200.000,00	0,00	0,00	0,00	0,00
15-feb-07	24.321.100,15	508.262.802,34	21.200.000,00	24.321.100,15	-77.730.236.079,40	0,00	0,00
15-mar-07	0,00	483.941.702,19	21.200.000,00	0,00	0,00	0,00	0,00
15-abr-07	0,00	483.941.702,19	21.200.000,00	0,00	0,00	0,00	0,00
15-may-07	19.559.281,65	483.941.702,19	21.200.000,00	19.559.281,65	-60.770.688.086,55	0,00	0,00
15-jun-07	0,00	464.382.420,54	21.200.000,00	0,00	0,00	0,00	0,00
15-jul-07	0,00	464.382.420,54	21.200.000,00	0,00	0,00	0,00	0,00
15-ago-07	19.726.158,91	464.382.420,54	21.200.000,00	19.726.158,91	-59.474.369.113,65	0,00	0,00
15-sep-07	0,00	444.656.261,63	21.200.000,00	0,00	0,00	0,00	0,00
15-oct-07	0,00	444.656.261,63	21.200.000,00	0,00	0,00	0,00	0,00
15-nov-07	13.485.961,17	444.656.261,63	21.200.000,00	13.485.961,17	-39.419.464.499,91	0,00	0,00
15-dic-07	0,00	431.170.300,46	21.200.000,00	0,00	0,00	0,00	0,00
15-ene-08	0,00	431.170.300,46	21.200.000,00	0,00	0,00	0,00	0,00
15-feb-08	19.506.102,29	431.170.300,46	21.200.000,00	19.506.102,29	-55.221.775.582,99	0,00	0,00
15-mar-08	0,00	411.664.198,17	21.200.000,00	0,00	0,00	0,00	0,00
15-abr-08	0,00	411.664.198,17	21.200.000,00	0,00	0,00	0,00	0,00
15-may-08	15.097.836,76	411.664.198,17	21.200.000,00	15.097.836,76	-41.383.170.559,16	0,00	0,00
15-jun-08	0,00	396.566.361,41	21.200.000,00	0,00	0,00	0,00	0,00
15-jul-08	0,00	396.566.361,41	21.200.000,00	0,00	0,00	0,00	0,00
15-ago-08	17.872.437,44	396.566.361,41	21.200.000,00	17.872.437,44	-47.344.086.778,56	0,00	0,00
15-sep-08	0,00	378.693.923,97	21.200.000,00	0,00	0,00	0,00	0,00
15-oct-08	0,00	378.693.923,97	21.200.000,00	0,00	0,00	0,00	0,00
15-nov-08	11.203.992,04	378.693.923,97	21.200.000,00	11.203.992,04	-28.648.607.646,28	0,00	0,00
15-dic-08	0,00	367.489.931,93	21.200.000,00	0,00	0,00	0,00	0,00
15-ene-09	0,00	367.489.931,93	21.200.000,00	0,00	0,00	0,00	0,00
15-feb-09	12.558.585,58	367.489.931,93	21.200.000,00	12.558.585,58	-30.956.913.454,70	0,00	0,00
15-mar-09	0,00	354.931.346,35	21.200.000,00	0,00	0,00	0,00	0,00
15-abr-09	0,00	354.931.346,35	21.200.000,00	0,00	0,00	0,00	0,00
15-may-09	9.842.431,37	354.931.346,35	21.200.000,00	9.375.766,18	-22.276.820.444,13	466.665,19	-1.108.796.490,99
15-jun-09	0,00	345.555.580,17	20.733.334,81	0,00	0,00	0,00	0,00
15-jul-09	0,00	345.555.580,17	20.733.334,81	0,00	0,00	0,00	0,00
15-ago-09	12.465.400,39	345.555.580,17	20.733.334,81	11.759.811,69	-26.859.409.896,94	705.588,70	-1.611.564.593,82



1.062.000.000,000  
 6,00%  
 0,75%  
 16-nov-15

69285,54

VIDA RESIDUAL DESDE

1,86

2,25

		SERIE A				SERIE B			
Principal		PRINCIPAL	VIDA	PRINCIPAL	VIDA	PRINCIPAL	VIDA	PRINCIPAL	VIDA
15-sep-09	1	0,00	333.795.768,48	20.027.746,11	0,00	0,00	0,00	0,00	0,00
15-oct-09	1	0,00	333.795.768,48	20.027.746,11	0,00	0,00	0,00	0,00	0,00
15-nov-09	1	12.857.526,27	333.795.768,48	20.027.746,11	12.129.741,76	-26.588.393.947,02	727.784,51	-1.595.303.636,82	
15-dic-09	1	0,00	321.666.026,72	19.299.961,60	0,00	0,00	0,00	0,00	0,00
15-ene-10	1	0,00	321.666.026,72	19.299.961,60	0,00	0,00	0,00	0,00	0,00
15-feb-10	1	12.584.982,31	321.666.026,72	19.299.961,60	11.872.624,82	-24.932.512.123,59	712.357,49	-1.495.950.727,42	
15-mar-10	1	0,00	309.793.401,90	18.587.604,11	0,00	0,00	0,00	0,00	0,00
15-abr-10	1	0,00	309.793.401,90	18.587.604,11	0,00	0,00	0,00	0,00	0,00
15-may-10	1	10.560.215,51	309.793.401,90	18.587.604,11	9.962.467,46	-20.034.522.066,61	597.748,05	-1.202.071.324,00	
15-jun-10	1	0,00	299.830.934,43	17.989.856,07	0,00	0,00	0,00	0,00	0,00
15-jul-10	1	0,00	299.830.934,43	17.989.856,07	0,00	0,00	0,00	0,00	0,00
15-ago-10	1	9.960.464,25	299.830.934,43	17.989.856,07	9.396.664,39	-18.032.198.958,25	563.799,86	-1.081.931.937,50	
15-sep-10	1	0,00	290.434.270,05	17.426.056,20	0,00	0,00	0,00	0,00	0,00
15-oct-10	1	0,00	290.434.270,05	17.426.056,20	0,00	0,00	0,00	0,00	0,00
15-nov-10	1	8.147.583,17	290.434.270,05	17.426.056,20	7.686.399,22	-14.043.051.369,42	461.183,95	-842.583.082,17	
15-dic-10	1	0,00	282.747.870,83	16.964.872,25	0,00	0,00	0,00	0,00	0,00
15-ene-11	1	0,00	282.747.870,83	16.964.872,25	0,00	0,00	0,00	0,00	0,00
15-feb-11	1	10.813.446,82	282.747.870,83	16.964.872,25	10.201.364,92	-17.699.368.144,06	612.081,90	-1.061.962.088,64	
15-mar-11	1	0,00	272.546.505,91	16.352.790,35	0,00	0,00	0,00	0,00	0,00
15-abr-11	1	0,00	272.546.505,91	16.352.790,35	0,00	0,00	0,00	0,00	0,00
15-may-11	1	7.940.170,85	272.546.505,91	16.352.790,35	7.490.727,22	-12.329.736.999,15	449.443,63	-739.784.219,95	
15-jun-11	1	0,00	265.055.778,69	15.903.346,72	0,00	0,00	0,00	0,00	0,00
15-jul-11	1	0,00	265.055.778,69	15.903.346,72	0,00	0,00	0,00	0,00	0,00
15-ago-11	1	7.680.966,69	265.055.778,69	15.903.346,72	7.246.194,99	-11.260.587.015,34	434.771,70	-675.635.220,92	
15-sep-11	1	0,00	257.809.583,70	15.468.575,02	0,00	0,00	0,00	0,00	0,00
15-oct-11	1	0,00	257.809.583,70	15.468.575,02	0,00	0,00	0,00	0,00	0,00
15-nov-11	1	6.853.524,21	257.809.583,70	15.468.575,02	6.465.588,88	-9.452.690.938,70	387.935,33	-567.161.456,32	
15-dic-11	1	0,00	251.343.994,82	15.080.639,69	0,00	0,00	0,00	0,00	0,00
15-ene-12	1	0,00	251.343.994,82	15.080.639,69	0,00	0,00	0,00	0,00	0,00
15-feb-12	1	9.533.199,13	251.343.994,82	15.080.639,69	8.993.584,08	-12.321.210.196,32	539.615,05	-739.272.611,78	
15-mar-12	1	0,00	242.350.410,74	14.541.024,64	0,00	0,00	0,00	0,00	0,00
15-abr-12	1	0,00	242.350.410,74	14.541.024,64	0,00	0,00	0,00	0,00	0,00
15-may-12	1	9.033.021,26	242.350.410,74	14.541.024,64	8.521.718,17	-10.907.799.257,36	511.303,09	-654.467.955,44	
15-jun-12	1	0,00	233.828.692,57	14.029.721,55	0,00	0,00	0,00	0,00	0,00
15-jul-12	1	0,00	233.828.692,57	14.029.721,55	0,00	0,00	0,00	0,00	0,00
15-ago-12	1	8.007.339,51	233.828.692,57	14.029.721,55	7.554.093,88	-8.974.263.526,30	453.245,63	-538.455.811,58	
15-sep-12	1	0,00	226.274.598,69	13.576.475,92	0,00	0,00	0,00	0,00	0,00
15-oct-12	1	0,00	226.274.598,69	13.576.475,92	0,00	0,00	0,00	0,00	0,00
15-nov-12	1	7.186.508,19	226.274.598,69	13.576.475,92	6.779.724,71	-7.430.578.279,47	406.783,48	-445.834.696,77	
15-dic-12	1	0,00	219.494.873,98	13.169.692,44	0,00	0,00	0,00	0,00	0,00
15-ene-13	1	0,00	219.494.873,98	13.169.692,44	0,00	0,00	0,00	0,00	0,00
15-feb-13	1	8.517.496,57	219.494.873,98	13.169.692,44	8.035.374,12	-8.067.515.619,13	482.122,45	-484.050.937,15	
15-mar-13	1	0,00	211.459.499,86	12.687.569,99	0,00	0,00	0,00	0,00	0,00
15-abr-13	1	0,00	211.459.499,86	12.687.569,99	0,00	0,00	0,00	0,00	0,00
15-may-13	1	6.973.863,92	211.459.499,86	12.687.569,99	6.579.116,91	-6.019.891.968,68	394.747,01	-361.193.518,12	
15-jun-13	1	0,00	204.880.382,95	12.292.822,98	0,00	0,00	0,00	0,00	0,00
15-jul-13	1	0,00	204.880.382,95	12.292.822,98	0,00	0,00	0,00	0,00	0,00
15-ago-13	1	6.515.003,52	204.880.382,95	12.292.822,98	6.515.003,52	-5.361.847.896,96	0,00	0,00	0,00
15-sep-13	1	0,00	198.365.379,43	12.292.822,98	0,00	0,00	0,00	0,00	0,00
15-oct-13	1	0,00	198.365.379,43	12.292.822,98	0,00	0,00	0,00	0,00	0,00
15-nov-13	1	6.080.651,22	198.365.379,43	12.292.822,98	5.367.689,63	-3.923.781.120,22	712.961,59	-521.174.921,60	
15-dic-13	1	0,00	192.997.689,80	11.579.861,39	0,00	0,00	0,00	0,00	0,00
15-ene-14	1	0,00	192.997.689,80	11.579.861,39	0,00	0,00	0,00	0,00	0,00
15-feb-14	1	7.153.270,94	192.997.689,80	11.579.861,39	6.748.368,81	-4.312.207.670,43	404.902,13	-258.732.460,23	
15-mar-14	1	0,00	186.249.320,99	11.174.959,26	0,00	0,00	0,00	0,00	0,00
15-abr-14	1	0,00	186.249.320,99	11.174.959,26	0,00	0,00	0,00	0,00	0,00
15-may-14	1	7.469.918,55	186.249.320,99	11.174.959,26	7.047.092,97	-3.875.901.134,43	422.825,58	-232.554.068,07	
15-jun-14	1	0,00	179.202.228,02	10.752.133,68	0,00	0,00	0,00	0,00	0,00
15-jul-14	1	0,00	179.202.228,02	10.752.133,68	0,00	0,00	0,00	0,00	0,00
15-ago-14	1	6.039.715,18	179.202.228,02	10.752.133,68	5.697.844,51	-2.609.612.785,32	341.870,67	-156.576.767,12	
15-sep-14	1	0,00	173.504.383,51	10.410.263,01	0,00	0,00	0,00	0,00	0,00
15-oct-14	1	0,00	173.504.383,51	10.410.263,01	0,00	0,00	0,00	0,00	0,00
15-nov-14	1	5.749.172,43	173.504.383,51	10.410.263,01	5.423.747,58	-1.985.091.612,62	325.424,85	-119.105.496,76	
15-dic-14	1	0,00	168.080.635,93	10.084.838,16	0,00	0,00	0,00	0,00	0,00
15-ene-15	1	0,00	168.080.635,93	10.084.838,16	0,00	0,00	0,00	0,00	0,00
15-feb-15	1	6.377.229,41	168.080.635,93	10.084.838,16	6.016.254,16	-1.648.453.639,94	360.975,25	-98.907.218,40	
15-mar-15	1	0,00	162.064.381,77	9.723.862,91	0,00	0,00	0,00	0,00	0,00
15-abr-15	1	0,00	162.064.381,77	9.723.862,91	0,00	0,00	0,00	0,00	0,00
15-may-15	1	5.853.288,37	162.064.381,77	9.723.862,91	5.521.970,16	-1.021.564.479,67	331.318,21	-61.293.868,78	
15-jun-15	1	0,00	156.542.411,61	9.392.544,70	0,00	0,00	0,00	0,00	0,00
15-jul-15	1	0,00	156.542.411,61	9.392.544,70	0,00	0,00	0,00	0,00	0,00
15-ago-15	1	5.475.052,69	156.542.411,61	9.392.544,70	5.165.144,05	-480.358.396,39	309.908,64	-28.821.503,78	
15-sep-15	1	0,00	151.377.267,57	9.082.636,05	0,00	0,00	0,00	0,00	0,00
15-oct-15	1	0,00	151.377.267,57	9.082.636,05	0,00	0,00	0,00	0,00	0,00
15-nov-15	1	4.883.517,83	151.377.267,57	9.082.636,05	4.883.517,83	-4.883.517,83	0,00	0,00	0,00
15-dic-15	1	0,00	146.493.749,74	9.082.636,05	0,00	0,00	0,00	0,00	0,00
15-ene-16	1	0,00	146.493.749,74	9.082.636,05	0,00	0,00	0,00	0,00	0,00
15-feb-16	1	6.897.612,92	146.493.749,74	9.082.636,05	6.897.612,92	627.682.776,07	0,00	0,00	0,00
15-mar-16	1	0,00	139.596.136,81	9.082.636,05	0,00	0,00	0,00	0,00	0,00
15-abr-16	1	0,00	139.596.136,81	9.082.636,05	0,00	0,00	0,00	0,00	0,00
15-may-16	1	6.697.757,09	139.596.136,81	9.082.636,05	6.697.757,09	1.212.294.032,63	0,00	0,00	0,00
15-jun-16	1	0,00	132.898.379,73	9.082.636,05	0,00	0,00	0,00	0,00	0,00
15-jul-16	1	0,00	132.898.379,73	9.082.636,05	0,00	0,00	0,00	0,00	0,00
15-ago-16	1	6.491.678,61	132.898.379,73	9.082.636,05	6.491.678,61	1.772.228.260,58	0,00	0,00	0,00
15-sep-16	1	0,00	126.406.701,12	9.082.636,05	0,00	0,00	0,00	0,00	0,00

1.062.000.000,000  
 6,00%  
 0,75%  
 16-nov-15

69285,54

VIDA RESIDUAL DESDE

1,86

2,25

	Principal	SERIE A	SERIE B	SERIE A PRINCIPAL	VIDA	SERIE B PRINCIPAL	VIDA	
15-oct-16 1	0,00	126.406.701,12	9.082.636,05	0,00	0,00	0,00	0,00	0,00
15-nov-16 1	6.297.970,74	126.406.701,12	9.082.636,05	6.297.970,74	2.298.759.320,56	0,00	0,00	0,00
15-dic-16 1	0,00	120.108.730,37	9.082.636,05	0,00	0,00	0,00	0,00	0,00
15-ene-17 1	0,00	120.108.730,37	9.082.636,05	0,00	0,00	0,00	0,00	0,00
15-feb-17 1	6.109.874,81	120.108.730,37	9.082.636,05	6.109.874,81	2.792.212.787,82	0,00	0,00	0,00
15-mar-17 1	0,00	113.998.855,57	9.082.636,05	0,00	0,00	0,00	0,00	0,00
15-abr-17 1	0,00	113.998.855,57	9.082.636,05	0,00	0,00	0,00	0,00	0,00
15-may-17 1	5.929.726,88	113.998.855,57	9.082.636,05	5.929.726,88	3.237.630.877,32	0,00	0,00	0,00
15-jun-17 1	0,00	108.069.128,68	9.082.636,05	0,00	0,00	0,00	0,00	0,00
15-jul-17 1	0,00	108.069.128,68	9.082.636,05	0,00	0,00	0,00	0,00	0,00
15-ago-17 1	5.265.321,36	108.069.128,68	9.082.636,05	5.265.321,36	3.359.275.029,60	0,00	0,00	0,00
15-sep-17 1	0,00	102.803.807,32	9.082.636,05	0,00	0,00	0,00	0,00	0,00
15-oct-17 1	0,00	102.803.807,32	9.082.636,05	0,00	0,00	0,00	0,00	0,00
15-nov-17 1	4.872.597,84	102.803.807,32	9.082.636,05	4.872.597,84	3.556.996.424,40	0,00	0,00	0,00
15-dic-17 1	0,00	97.931.209,48	9.082.636,05	0	0,00	0,00	0,00	0,00
15-ene-18 1	0,00	97.931.209,48	9.082.636,05	0	0,00	0,00	0,00	0,00
15-feb-18 1	107.014.779,71	97.931.209,48	9.082.636,05	97.931.209,48	80.499.454.191,68	9.082.636,05	7.465.926.836,36	