



## **F.T.H. UCI 5**

**MARIA JOSE HERENCIAS PALOMINO**

**ANALYST**

**SANTANDER DE TITULIZACION, S.G.F.T, S.A.**

**CIUDAD GRUPO SANTANDER**

**28660 BOADILLA DEL MONTE**

**[marjherencias@gruposantander.com](mailto:marjherencias@gruposantander.com)**

**Tel: 912893300**



NAME OF THE FUND: F.T.H. UCI 5

INFORMATION AT: QUARTER/SEMESTER: 1<sup>o</sup> Trimestre - 2<sup>o</sup> Trimestre YEAR: 2013

Acting on behalf of Santander de Titulización S.G.F.T., S.A. as General Manager:	Signature:

**I. DATA OF THE FUND**

Constitution Date	R 1 <sup>a</sup> Trimestre 2013	Paying Agent	Santander de Titulización S.G.F.T., S.A.	
Disbursement Date	R 1 <sup>a</sup> Trimestre 2013	Negotiation Market	OTC	
Final Date of Redemption	31 de Diciembre 2013	Ratings Agencies	Standard & Poor's	
Management Company	Santander de Titulización S.G.F.T., S.A.	Rating	Initial	Current
Credit Rights's Seller	Santander de Titulización S.G.F.T., S.A.	CLASS A	AAA	AAA
		CLASS B	BBB	BBB

## II. SECURITIES ISSUED CHARGED TO THE FUND: SECURITISATION BONDS

CLASS PRIORITY ISIN CODE	NUM BONDS	NOMINAL			
			Initial	Current	%Act/In
ÓSCÚÁE ÓUeHííí€€	GÉ HE	Nominal per Bond	F€€€€€€	í € G BÍ	
		Total Nominal	G H€€€€€€€	Fí €Fí €í € €	í € CÄ
ÓSCÚÁÓ ÓUeHííí€FG	FGE	Nominal per Bond	F€€€€€€	GG€í H€H	
		Total Nominal	FG€€€€€€€	G€í J BJJ€ €	GG€í Ä

REDEMPTION AND INTEREST OF THE BONDS					
Current			Next		
Payment Date of the Current Period November 15, 2013			Next Payment Date February 17, 2014		
	Redemption of the Bonds	Gross Interest	Interest Rate	Gross Interest Next Coupon	Net Interest Next Coupon
CLASS A	Gí F€FÁ	í € Á	€€íí GÄ	í €í Á	í €GÁ
CLASS B	€€€Á	íí €€Á	€€ííí Ä	íí €FÁ	Hí €€Á
Accrued amortisation due not payed	€€€Á				
Scheduled Amortisation	DU				

**III. ASSET PURCHASED BY THE FUND: CREDIT RIGHTS**

CREDIT RIGHTS	ISSUE DATE	CURRENT DATE
Number of CR's	5.502	959
CR's Outstanding to be amortised	265.000.190,10	19.664.152,84
CR's Outstanding per Loan to be amortised	48.164,34	20.504,85
Interest Rate	5,10 %	1,94 %

PREPAYMENT RATE	CURRENT SITUATION
Monthly Single Rate	2,73 %
Average Monthly Single Rate	5,03 %
Constant Prepayment Rate from Constitution	11,53 %

CURRENT DELINQUENCY	Up to 1 month	From 1 to 6 months	Greater than 6 months
Debt Due (Principal + Interest)	6.507,59	5.222,73	14.231,07
Debt to be amortised	0,00	0,00	19.645.219,88
Total Debt	6.507,59	5.222,73	19.659.450,95

**F.T.H. UCI 5**

**QUARTERLY BONDS PAYOUT REPORT**

**November 15th, 2013**

BONDS. PRINCIPAL	
Previous Balance	20.299.456,70 €
Principal Amortised	635.308,30 €
Outstanding Balance	19.664.148,40 €
% of Initial Balance	7,42%
Principal accrued and unpaid	0,00 €

INTEREST PAID	
CLASS A	20.341,20 €
CLASS B	5.700,00 €
Interest accrued and unpaid	0,00 €

DATA	
Determination Date	November 8th, 2013
Payment Date	November 15th, 2013
Last Payment Date	August 16th, 2013
Number of Days (Act/360)	91
Reference Interest Rate (%)	0,218%
Next Payment Date	February 17th, 2014

RESIDUAL LIFE (YEARS)		
	INITIAL	November 15th, 2013
CLASS A	7,50	0,27
CLASS B	10,40	0,27

## F.T.H. UCI 5

### QUARTERLY COLLATERAL REPORT

November 15th, 2013

PRINCIPAL	
Previous Balance	20.299.452,52 €
Principal Amortised	635.299,68 €
Outstanding Balance	19.664.152,84 €
Number of Credit Rights	959
LTV	27,36%

INTEREST	
Interest received during relevant period	94.216,48 €
Interest accrued during relevant period	129.276,38 €

PRINCIPAL BALANCE IN ARREARS						
	UP to 30 DAYS	30 to 60 DAYS	60 to 90 DAYS	90 to 180 DAYS	180 TO 365 DAYS	> 365 DAYS
Principal Balance in Arrears	5.547,59 €	1.941,12 €	0,00 €	2.535,88 €	0,00 €	8.908,37 €
Interest accrued on Credit Rights in Arrears	960,00 €	277,74 €	0,00 €	467,99 €	0,00 €	5.322,70 €
Outstanding Balance	716.281,45 €	113.108,97 €	0,00 €	68.325,14 €	0,00 €	179.861,32 €
Number of Credit Rights	3	5	0	4	0	5
% of Outstanding Balance	3,64%	0,58%	0,00%	0,35%	0,00%	0,91%

## F.T.H. UCI 5

### QUARTERLY REPORT - ALLOCATION OF CASH

November 15th, 2013

TOTAL CASH RECEIVED END OF PERIOD	728.983,53 €
<b>CASH RECEIVED - PRINCIPAL</b>	
Amortisation of Credit Rights	635.299,68 €
<b>CASH RECEIVED - INTEREST</b>	
Interest received from Credit Rights	94.216,48 €
Interest received under GIC	0,79 €
<b>CONTENTIOUS / JUDICIALS</b>	
<b>OTHERS</b>	-533,42 €

TOTAL CASH PAID END OF PERIOD	728.983,53 €
ORDINARY EXPENSES	376,81 €
MANAGEMENT FEE	2.783,53 €
INTEREST PAID TO BTH's CLASS A	20.341,20 €
INTEREST PAID TO BTH's CLASS B	5.700,00 €
REDEMPTION PAID TO BTH's CLASS A	635.308,30 €
REDEMPTION PAID TO BTH's CLASS B	0,00 €
INTEREST PAID ON SUBORDINATED LOAN A (SANTANDER)	2.810,08 €
INTEREST PAID ON SUBORDINATED LOAN A (PARIBAS)	2.810,08 €
ADMINISTRATION FEE	6.000,00 €
VARIABLE FEE	52.853,54 €

TREASURY ACCOUNT STATEMENT	2.650.000,00 €
<b>PRINCIPAL RESERVE FUND</b>	
Previous Balance	2.650.000,00 €
Period utilization	0,00 €
Outstanding Balance	2.650.000,00 €

**F.T.H. UCI 5**

**CREDIT ENHACEMENT AND SUBORDINATED LOAN**

**November 15th, 2013**

<b>CREDIT ENHACEMENT</b>		
<b>CONCEPTS</b>	<b>INITIAL</b>	<b>November 15th, 2013</b>
SUBORDINATED ISSUE	4,53 %	13,48%
PRINCIPAL RESERVE FUND	5.565.000,00 € (2,10 %)	2.650.000,00 € 13,48%

<b>SUBORDINATED LOANS</b>		
<b>CONCEPTS</b>	<b>INITIAL</b>	<b>November 15th, 2013</b>
<b>SUBORDINATED LOAN A SANTANDER</b>		
Total Outstanding Subordinated Loan	3.220.523,36 €	1.326.021,73 €
Interest Rate	3,620%	0,84%
<b>SUBORDINATED LOAN A PARIBAS</b>		
Total Outstanding Subordinated Loan	3.220.523,36 €	1.326.021,72 €
Interest Rate	3,620%	0,84%



## F.T.H. UCI 5

### DEFINITIONS

**DETERMINATION DATE** Means the date in which the Gestora will carry out the necessary calculations, on behalf of the Fund, for the distribution of the available funds at this date, according with the Order of Priority of Payments.

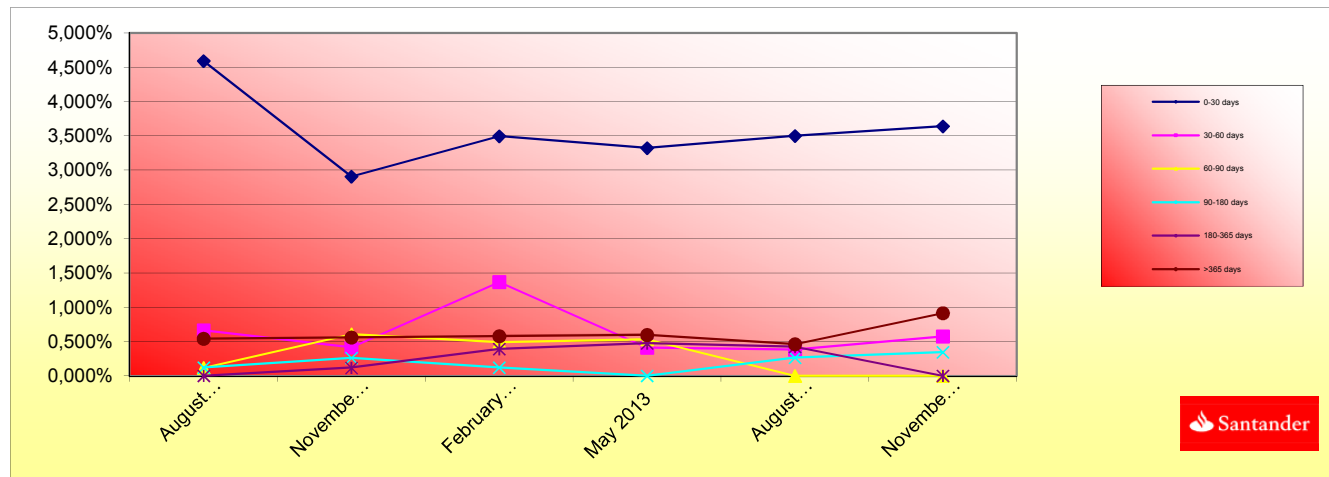
All the information regarding the Assets (Outstanding Balance of the Credit Rights, arrears' tables, transitory properties, stratification tables, etc.) are referred to this mentioned date.

**TRANSITORY PROPERTIES** Those assets in the balance of the Fund as a consequence of a judicial or non-judicial process.

**FONDO DE TITULIZACIÓN HIPOTECARIA  
UCI 5**

**HISTORICAL ARREARS REPORT**

<b>Data</b>	<b>August 2012</b>	<b>November 2012</b>	<b>February 2013</b>	<b>May 2013</b>	<b>August 2013</b>	<b>November 2013</b>
<b>0-30 days</b>	4,594%	2,909%	3,497%	3,322%	3,500%	3,643%
<b>30-60 days</b>	0,661%	0,416%	1,368%	0,411%	0,384%	0,575%
<b>60-90 days</b>	0,117%	0,605%	0,489%	0,532%	0,000%	0,000%
<b>90-180 days</b>	0,121%	0,262%	0,124%	0,000%	0,268%	0,347%
<b>180-365 days</b>	0,000%	0,120%	0,394%	0,477%	0,424%	0,000%
<b>&gt;365 days</b>	0,543%	0,558%	0,577%	0,600%	0,463%	0,915%



**FONDO DE TITULIZACION DE ACTIVOS  
UCI 5**

**TRIGGERS**

**TRIGGERS BONDS**

1. IF 1.a) IS HIGHER THAN 1.b) THERE IS NO REDEMPTION OF CLASS B:

1.a) MP'S IN ARREARS OVER 90 DAYS	248.186,46 €
1.b) 7% MP'S OUTSTANDING BALANCE	1.376.490,70 €

**TRIGGERS RESERVE FUND**

1. IF 1.a) IS HIGHER THAN 1.b) THERE IS NO REDEMPTION OF RESERVE FUND:

1.a) MP'S IN ARREARS OVER 90 DAYS	N/A
1.b) 3% MP'S OUTSTANDING BALANCE	N/A

2. IF 2.a) IS LOWER THAN 2.b) THERE IS NO REDEMPTION OF RESERVE FUND:

2.a) WEIGHTED AVERAGE RATE MP'S	N/A
2.b) WEIGHTED AVERAGE RATE BONDS A AND B + 0,25%	N/A

3. IF 3.a) IS HIGHER THAN 3.b) THERE IS NO REDEMPTION OF RESERVE FUND:

3.a) WRITTE OFF	N/A
3.b) 0,025% INITIAL OUTSTANDING BALANCE MP'S *N/A PAYMENT DATES	N/A

**THE RESERV FUND IS IN MINIMUN LEVEL REQUIERED EQUIVALENT TO 1% OF THE INITIAL MP'S OUTSTANDING BALANCE**

**FONDO DE TITULIZACIÓN HIPOTECARIA  
UCI 5**

L.T.V.

LTV (%)	OUTS. BALANC	% OUTSTANDING	LOANS	% LOANS
	SALDOS VIVOS	% SALDOS VIVOS	Nº. DE PRESTAMOS	% Nº DE PRESTAMOS
<b>0,02-9,99</b>	636.996,22	3,2394%	114	11,8874%
<b>10,00 - 19,99</b>	2.811.955,13	14,2999%	223	23,2534%
<b>20,00 - 29,99</b>	4.202.640,46	21,3721%	218	22,7320%
<b>30,00 - 39,99</b>	5.498.774,02	27,9634%	199	20,7508%
<b>40,00 - 49,99</b>	5.204.797,87	26,4685%	165	17,2054%
<b>50,00 - 59,99</b>	1.269.188,30	6,4543%	39	4,0667%
<b>60,00 - 70,00</b>	39.800,84	0,2024%	1	0,1043%

**F.T.H.: UCI 5**

**Counterpart**

Agreement	Counterpart	Rating Agency	Minimum rating	Current rating
Treasury account	Banco Santander S.A.	Moody's	S/T: P-1	P-2

COUNTERPARTY DOES NOT HAVE THE MINIMUM RATING REQUIRED. TREASURY ACCOUNT HAS BEEN TRANSFERRED TO A COUNTERPARTY WITH MINIMUM RATING REQUIRED.

**UCI 5**

Date	Real Outstanding	1,02%		Average Single monthly mortality	CPR	Monthly Single monthly mortality	5,03%
		Prepayment vector	Remaining at the end of the month				CPR
	265.000.190,1		100,00%	100,00%			
julio-99	264.353.986,2	261.013.400,2	98,98%	98,74%	1,26%	14,15%	1,26%
agosto-99	263.705.035,9	257.903.244,9	97,98%	97,80%	1,11%	12,50%	0,95%
septiembre-99	263.053.327,6	256.480.934,6	96,98%	97,50%	0,84%	9,63%	0,31%
octubre-99	262.398.849,6	254.314.688,6	96,00%	96,92%	0,78%	8,96%	0,60%
noviembre-99	261.741.590,0	252.653.080,9	95,02%	96,53%	0,70%	8,13%	0,40%
diciembre-99	261.081.537,0	249.659.606,1	94,06%	95,63%	0,74%	8,56%	0,93%
enero-00	260.419.897,8	247.491.249,5	93,10%	95,04%	0,72%	8,36%	0,62%
febrero-00	259.755.446,6	245.717.575,5	92,16%	94,60%	0,69%	8,00%	0,46%
marzo-00	259.088.171,5	243.447.809,7	91,22%	93,96%	0,69%	7,97%	0,67%
abril-00	258.418.060,5	240.457.172,0	90,29%	93,05%	0,72%	8,28%	0,97%
mayo-00	257.745.101,5	238.473.761,8	89,38%	92,52%	0,70%	8,13%	0,57%
junio-00	257.069.282,4	236.040.146,9	88,47%	91,82%	0,71%	8,18%	0,76%
julio-00	256.390.750,2	233.330.106,1	87,57%	91,01%	0,72%	8,33%	0,89%
agosto-00	255.709.334,2	231.317.292,6	86,68%	90,46%	0,71%	8,23%	0,60%
septiembre-00	255.025.022,2	229.266.542,5	85,80%	89,90%	0,71%	8,17%	0,62%
octubre-00	254.337.801,8	227.277.014,1	84,93%	89,36%	0,70%	8,09%	0,60%
noviembre-00	253.647.660,8	225.218.773,1	84,07%	88,79%	0,70%	8,05%	0,64%
diciembre-00	252.954.586,7	222.849.442,2	83,21%	88,10%	0,70%	8,10%	0,78%
enero-01	252.258.993,8	219.871.311,8	82,37%	87,16%	0,72%	8,31%	1,06%
febrero-01	251.560.444,6	217.695.642,5	81,53%	86,54%	0,72%	8,31%	0,71%
marzo-01	250.858.926,6	215.432.234,4	80,70%	85,88%	0,72%	8,33%	0,76%
abril-01	250.154.427,1	212.536.457,5	79,88%	84,96%	0,74%	8,51%	1,07%
mayo-01	249.446.933,5	209.818.457,4	79,07%	84,11%	0,75%	8,63%	1,00%
junio-01	248.736.433,1	206.739.491,5	78,27%	83,12%	0,77%	8,83%	1,19%
julio-01	248.023.060,0	203.095.332,4	77,47%	81,89%	0,80%	9,15%	1,48%
agosto-01	247.306.655,1	200.264.043,8	76,69%	80,98%	0,81%	9,28%	1,11%
septiembre-01	246.587.205,5	198.420.530,8	75,91%	80,47%	0,80%	9,21%	0,63%
octubre-01	245.864.698,2	195.833.760,9	75,14%	79,65%	0,81%	9,29%	1,01%
noviembre-01	245.139.120,3	193.484.003,6	74,37%	78,93%	0,81%	9,33%	0,91%
diciembre-01	244.410.458,7	190.106.061,4	73,62%	77,78%	0,83%	9,56%	1,45%
enero-02	243.679.232,8	187.678.028,1	72,87%	77,02%	0,84%	9,61%	0,98%
febrero-02	242.944.899,3	185.061.871,5	72,13%	76,17%	0,85%	9,70%	1,10%
marzo-02	242.207.444,8	181.647.819,3	71,40%	75,00%	0,87%	9,93%	1,55%
abril-02	241.466.856,1	178.351.253,9	70,67%	73,86%	0,89%	10,14%	1,51%
mayo-02	240.723.120,0	174.919.259,5	69,96%	72,66%	0,91%	10,37%	1,62%
junio-02	239.976.222,9	171.288.232,4	69,24%	71,38%	0,93%	10,63%	1,77%
julio-02	239.227.731,7	168.000.812,5	68,54%	70,23%	0,95%	10,83%	1,61%
agosto-02	238.476.059,3	165.450.625,4	67,84%	69,38%	0,96%	10,90%	1,21%
septiembre-02	237.721.192,4	163.236.867,0	67,16%	68,67%	0,96%	10,92%	1,02%
octubre-02	236.963.117,3	161.039.181,7	66,47%	67,96%	0,96%	10,94%	1,03%
noviembre-02	236.201.820,3	159.057.604,1	65,80%	67,34%	0,96%	10,93%	0,91%
diciembre-02	235.437.287,9	156.488.093,0	65,13%	66,47%	0,97%	11,02%	1,30%
enero-03	234.669.893,6	154.282.351,2	64,47%	65,74%	0,97%	11,05%	1,09%

							5,03%	
Date	Real Outstanding				Average Single monthly mortality	CPR	Monthly Single monthly mortality	CPR
			1,02%					
			Prepayment vector	Remaining at the end of the month				
febrero-03	233.899.237,9	151.506.462,2	63,81%	64,77%	0,98%	11,17%	1,48%	16,34%
marzo-03	233.125.307,0	148.727.230,4	63,17%	63,80%	0,99%	11,30%	1,51%	16,67%
abril-03	232.348.086,8	146.215.615,1	62,52%	62,93%	1,00%	11,38%	1,36%	15,15%
mayo-03	231.567.563,5	143.479.637,3	61,89%	61,96%	1,01%	11,50%	1,54%	17,00%
junio-03	230.783.722,9	140.702.135,4	61,26%	60,97%	1,03%	11,64%	1,60%	17,62%
julio-03	229.998.623,8	137.162.888,3	60,64%	59,64%	1,05%	11,89%	2,18%	23,27%
agosto-03	229.210.188,1	133.747.799,5	60,02%	58,35%	1,07%	12,13%	2,15%	23,00%
septiembre-03	228.418.401,6	130.947.326,4	59,41%	57,33%	1,09%	12,27%	1,75%	19,14%
octubre-03	227.623.249,9	127.272.068,0	58,81%	55,91%	1,11%	12,56%	2,47%	25,90%
noviembre-03	226.824.718,9	123.286.705,2	58,21%	54,35%	1,14%	12,89%	2,79%	28,79%
diciembre-03	226.022.794,1	120.012.588,8	57,62%	53,10%	1,17%	13,12%	2,31%	24,46%
enero-04	225.218.267,8	117.053.168,8	57,04%	51,97%	1,18%	13,31%	2,12%	22,65%
febrero-04	224.410.322,2	115.078.520,2	56,46%	51,28%	1,19%	13,33%	1,33%	14,87%
marzo-04	223.598.942,9	112.415.752,4	55,88%	50,28%	1,20%	13,48%	1,96%	21,14%
abril-04	222.784.115,2	110.174.701,8	55,31%	49,45%	1,21%	13,56%	1,64%	17,95%
mayo-04	221.965.824,5	107.622.167,6	54,75%	48,49%	1,22%	13,69%	1,96%	21,11%
junio-04	221.144.056,1	104.717.994,6	54,20%	47,35%	1,24%	13,89%	2,34%	24,71%
julio-04	220.323.291,5	102.363.258,3	53,65%	46,46%	1,25%	14,00%	1,88%	20,41%
agosto-04	219.499.038,7	100.064.133,0	53,10%	45,59%	1,26%	14,10%	1,88%	20,36%
septiembre-04	218.671.282,7	98.428.470,1	52,56%	45,01%	1,26%	14,11%	1,26%	14,14%
octubre-04	217.840.008,9	96.233.838,6	52,03%	44,18%	1,27%	14,20%	1,86%	20,14%
noviembre-04	217.005.202,1	94.758.562,0	51,50%	43,67%	1,27%	14,18%	1,15%	13,00%
diciembre-04	216.166.847,4	92.484.371,8	50,98%	42,78%	1,28%	14,30%	2,02%	21,73%
enero-05	215.328.250,6	90.417.486,9	50,46%	41,99%	1,29%	14,39%	1,85%	20,11%
febrero-05	214.486.089,7	88.331.108,7	49,95%	41,18%	1,30%	14,49%	1,92%	20,79%
marzo-05	213.640.349,7	86.068.896,1	49,44%	40,29%	1,31%	14,62%	2,18%	23,20%
abril-05	212.791.015,3	84.072.439,5	48,94%	39,51%	1,32%	14,72%	1,93%	20,85%
mayo-05	211.938.071,2	81.894.420,0	48,44%	38,64%	1,33%	14,85%	2,20%	23,42%
junio-05	211.081.502,1	79.530.987,7	47,95%	37,68%	1,35%	15,01%	2,49%	26,13%
julio-05	210.228.080,2	78.139.862,7	47,46%	37,17%	1,35%	15,01%	1,35%	15,05%
agosto-05	209.371.031,1	76.205.933,6	46,98%	36,40%	1,36%	15,12%	2,08%	22,25%
septiembre-05	208.510.339,7	74.860.166,0	46,50%	35,90%	1,36%	15,12%	1,36%	15,16%
octubre-05	207.645.990,2	72.931.928,1	46,03%	35,12%	1,37%	15,23%	2,17%	23,15%
noviembre-05	206.777.967,3	71.286.868,8	45,56%	34,48%	1,37%	15,29%	1,85%	20,03%
diciembre-05	205.906.255,3	69.528.590,7	45,10%	33,77%	1,38%	15,38%	2,05%	22,04%
enero-06	205.033.628,0	68.235.195,8	44,64%	33,28%	1,38%	15,39%	1,44%	16,00%
febrero-06	204.157.292,1	66.446.036,5	44,19%	32,55%	1,39%	15,50%	2,20%	23,47%
marzo-06	203.277.231,7	65.146.093,0	43,74%	32,05%	1,40%	15,51%	1,53%	16,91%
abril-06	202.393.431,0	63.564.098,9	43,29%	31,41%	1,40%	15,59%	2,00%	21,55%
mayo-06	201.505.874,2	62.426.386,6	42,85%	30,98%	1,40%	15,58%	1,36%	15,12%
junio-06	200.614.545,3	61.098.222,6	42,42%	30,46%	1,41%	15,62%	1,69%	18,52%
julio-06	199.723.488,6	59.978.865,1	41,99%	30,03%	1,41%	15,62%	1,39%	15,50%
agosto-06	198.828.644,9	59.075.688,1	41,56%	29,71%	1,40%	15,58%	1,06%	12,03%
septiembre-06	197.929.998,2	58.383.870,3	41,14%	29,50%	1,39%	15,50%	0,72%	8,33%
octubre-06	197.027.532,2	57.611.065,2	40,72%	29,24%	1,39%	15,44%	0,87%	9,97%
noviembre-06	196.121.230,7	56.814.660,6	40,31%	28,97%	1,38%	15,38%	0,93%	10,57%
diciembre-06	195.211.077,4	55.845.313,7	39,90%	28,61%	1,38%	15,37%	1,25%	13,99%
enero-07	194.301.305,5	54.966.798,6	39,49%	28,29%	1,38%	15,34%	1,11%	12,56%
febrero-07	193.387.667,0	53.889.758,7	39,09%	27,87%	1,38%	15,35%	1,50%	16,55%
marzo-07	192.470.145,5	52.978.863,2	38,70%	27,53%	1,38%	15,33%	1,22%	13,71%
abril-07	191.548.724,5	52.182.528,3	38,30%	27,24%	1,37%	15,30%	1,03%	11,68%
mayo-07	190.623.387,6	51.279.341,8	37,91%	26,90%	1,37%	15,28%	1,25%	14,05%
junio-07	189.694.117,9	50.018.067,9	37,53%	26,37%	1,38%	15,35%	1,98%	21,35%

Date	Real Outstanding	1,02%		Average Single monthly mortality	CPR	Monthly Single monthly mortality	5,03%	
		Prepayment vector	Remaining at the end of the month				CPR	
								CPR
julio-07	188.770.434,1	49.383.970,4	37,15%	26,16%	1,37%	15,29%	0,78%	9,02%
agosto-07	187.842.824,6	48.690.936,0	36,77%	25,92%	1,37%	15,24%	0,92%	10,46%
septiembre-07	186.911.272,7	48.143.078,1	36,40%	25,76%	1,36%	15,16%	0,63%	7,33%
octubre-07	185.975.761,8	47.614.819,1	36,03%	25,60%	1,35%	15,08%	0,60%	6,96%
noviembre-07	185.036.275,0	46.977.478,4	35,66%	25,39%	1,35%	15,03%	0,84%	9,60%
diciembre-07	184.092.795,3	46.071.049,9	35,30%	25,03%	1,35%	15,04%	1,43%	15,84%
enero-08	183.163.640,0	45.357.426,9	34,94%	24,76%	1,35%	15,01%	1,05%	11,89%
febrero-08	182.230.535,9	44.809.637,5	34,59%	24,59%	1,34%	14,94%	0,70%	8,10%
marzo-08	181.293.466,0	44.216.232,1	34,23%	24,39%	1,33%	14,89%	0,81%	9,35%
abril-08	180.352.413,5	43.469.446,6	33,89%	24,10%	1,33%	14,88%	1,18%	13,23%
mayo-08	179.407.361,6	42.897.712,5	33,54%	23,91%	1,33%	14,83%	0,80%	9,14%
junio-08	178.458.293,3	42.147.278,9	33,20%	23,62%	1,33%	14,82%	1,23%	13,77%
julio-08	177.517.804,9	41.602.305,7	32,86%	23,44%	1,32%	14,76%	0,77%	8,86%
agosto-08	176.573.319,5	40.960.135,8	32,53%	23,20%	1,32%	14,73%	1,02%	11,54%
septiembre-08	175.624.820,0	40.490.560,5	32,20%	23,06%	1,31%	14,67%	0,61%	7,11%
octubre-08	174.672.289,5	40.107.446,3	31,87%	22,96%	1,31%	14,58%	0,41%	4,76%
noviembre-08	173.715.710,6	39.597.674,6	31,55%	22,79%	1,30%	14,53%	0,73%	8,39%
diciembre-08	172.755.066,3	39.178.088,7	31,23%	22,68%	1,29%	14,46%	0,51%	5,94%
enero-09	171.797.806,3	38.706.315,0	30,91%	22,53%	1,29%	14,40%	0,65%	7,57%
febrero-09	170.836.477,9	38.329.263,7	30,60%	22,44%	1,28%	14,32%	0,42%	4,89%
marzo-09	169.871.063,9	37.916.294,6	30,29%	22,32%	1,27%	14,26%	0,52%	6,01%
abril-09	168.901.546,9	37.603.809,8	29,98%	22,26%	1,26%	14,17%	0,25%	3,02%
mayo-09	167.927.909,4	37.252.714,2	29,67%	22,18%	1,26%	14,09%	0,36%	4,23%
junio-09	166.950.134,0	36.856.641,4	29,37%	22,08%	1,25%	14,02%	0,48%	5,65%
julio-09	165.980.411,5	36.389.069,9	29,07%	21,92%	1,25%	13,97%	0,69%	7,99%
agosto-09	165.006.567,7	36.017.087,7	28,78%	21,83%	1,24%	13,90%	0,44%	5,13%
septiembre-09	164.028.585,1	35.618.461,1	28,49%	21,71%	1,23%	13,84%	0,52%	6,03%
octubre-09	163.046.446,0	35.235.370,7	28,20%	21,61%	1,23%	13,78%	0,48%	5,61%
noviembre-09	162.060.132,9	34.880.086,1	27,91%	21,52%	1,22%	13,71%	0,41%	4,76%
diciembre-09	161.069.627,9	34.232.283,8	27,63%	21,25%	1,22%	13,71%	1,25%	14,05%
enero-10	160.088.816,9	33.803.668,5	27,35%	21,12%	1,22%	13,67%	0,65%	7,49%
febrero-10	159.103.837,5	33.397.900,7	27,07%	20,99%	1,21%	13,61%	0,59%	6,84%
marzo-10	158.114.671,8	33.044.002,3	26,79%	20,90%	1,21%	13,55%	0,44%	5,16%
abril-10	157.121.302,3	32.646.459,1	26,52%	20,78%	1,20%	13,50%	0,58%	6,72%
mayo-10	156.123.710,9	32.239.836,4	26,25%	20,65%	1,20%	13,45%	0,61%	7,13%
junio-10	155.121.879,7	31.934.481,1	25,99%	20,59%	1,19%	13,38%	0,31%	3,63%
julio-10	154.140.242,3	31.519.729,7	25,72%	20,45%	1,19%	13,34%	0,67%	7,75%
agosto-10	153.154.432,9	31.170.803,3	25,46%	20,35%	1,18%	13,29%	0,47%	5,50%
septiembre-10	152.164.433,8	30.851.818,8	25,20%	20,28%	1,18%	13,22%	0,38%	4,46%
octubre-10	151.170.227,2	30.477.131,0	24,95%	20,16%	1,17%	13,18%	0,56%	6,57%
noviembre-10	150.171.795,2	30.079.763,9	24,69%	20,03%	1,17%	13,14%	0,65%	7,50%
diciembre-10	149.169.119,9	29.766.288,9	24,44%	19,95%	1,16%	13,08%	0,38%	4,43%
enero-11	148.178.674,7	29.343.246,4	24,19%	19,80%	1,16%	13,05%	0,76%	8,77%
febrero-11	147.184.020,2	28.899.715,1	23,95%	19,64%	1,16%	13,02%	0,85%	9,69%
marzo-11	146.185.138,4	28.477.477,3	23,71%	19,48%	1,15%	13,00%	0,79%	9,05%
abril-11	145.182.011,3	28.149.264,4	23,46%	19,39%	1,15%	12,95%	0,47%	5,49%
mayo-11	144.174.621,0	27.875.506,2	23,23%	19,33%	1,14%	12,88%	0,28%	3,32%
junio-11	143.162.949,2	27.531.658,58	22,99%	19,23%	1,14%	12,84%	0,54%	6,24%
julio-11	142.167.173,2	27.255.890,1	22,76%	19,17%	1,13%	12,78%	0,31%	3,64%
agosto-11	141.167.165,0	26.968.593,2	22,53%	19,10%	1,13%	12,72%	0,35%	4,16%
septiembre-11	140.162.906,8	26.647.535,6	22,30%	19,01%	1,12%	12,67%	0,48%	5,64%
octubre-11	139.154.380,6	26.327.911,16	22,07%	18,92%	1,12%	12,63%	0,48%	5,65%
noviembre-11	138.141.568,1	25.988.413,2	21,85%	18,81%	1,11%	12,59%	0,57%	6,58%
diciembre-11	137.124.451,1	25.713.640,1	21,62%	18,75%	1,11%	12,53%	0,32%	3,81%
enero-12	136.120.474,7	25.369.483,3	21,40%	18,64%	1,11%	12,50%	0,61%	7,09%
febrero-12	135.112.231,4	25.115.766,4	21,19%	18,59%	1,10%	12,44%	0,26%	3,09%
marzo-12	134.099.703,1	24.839.130,0	20,97%	18,52%	1,10%	12,39%	0,35%	4,17%
abril-12	133.082.871,5	24.505.817,9	20,76%	18,41%	1,09%	12,35%	0,59%	6,83%
mayo-12	132.061.718,4	24.257.625,0	20,55%	18,37%	1,09%	12,29%	0,25%	2,93%
junio-12	131.036.225,4	23.955.207,3	20,34%	18,28%	1,08%	12,25%	0,47%	5,54%
julio-12	130.063.386,4	23.679.833,1	20,13%	18,21%	1,08%	12,21%	0,41%	4,81%
agosto-12	129.086.412,9	23.395.664,5	19,93%	18,12%	1,08%	12,17%	0,45%	5,29%
septiembre-12	128.105.287,2	23.171.600,9	19,73%	18,09%	1,07%	12,11%	0,20%	2,36%
octubre-12	127.119.991,7	22.937.845,1	19,53%	18,04%	1,06%	12,05%	0,24%	2,86%
noviembre-12	126.130.508,7	22.711.275,6	19,33%	18,01%	1,06%	12,00%	0,21%	2,50%
diciembre-12	125.136.820,4	22.409.282,2	19,13%	17,91%	1,06%	11,96%	0,55%	6,36%
enero-13	124.210.241,9	22.167.015,9	18,94%	17,85%	1,05%	11,92%	0,34%	4,04%
febrero-13	123.279.725,4	21.890.813,7	18,74%	17,76%	1,05%	11,88%	0,50%	5,84%
marzo-13	122.345.254,3	21.597.147,4	18,55%	17,65%	1,05%	11,85%	0,59%	6,83%
abril-13	121.406.811,6	21.273.431,40	18,37%	17,52%	1,04%	11,83%	0,74%	8,50%
mayo-13	120.464.380,6	21.038.408,5	18,18%	17,46%	1,04%	11,78%	0,33%	3,90%
junio-13	119.517.944,2	20.781.210,7	17,99%	17,39%	1,04%	11,75%	0,44%	5,16%
julio-13	118.622.810,7	20.542.075,2	17,81%	17,32%	1,03%	11,71%	0,40%	4,75%
agosto-13	117.723.872,9	20.299.452,5	17,63%	17,24%	1,03%	11,67%	0,43%	5,00%
septiembre-13	116.821.114,5	20.062.737,1	17,45%	17,17%	1,02%	11,63%	0,40%	4,72%
octubre-13	115.914.519,5	19.865.542,3	17,27%	17,14%	1,02%	11,58%	0,21%	2,47%
noviembre-13	115.004.071,5	19.664.152,8	17,10%	17,10%	1,02%	11,53%	0,23%	2,73%



## UCI 5

DEAL 265.000.000  
 MEZZ. DECLINN 8,00%  
 MEZZ. STOPS DECLINN 1,00%  
 VIDA RESIDUAL DESDE 08/11/2013

					0,27		0,27
FECHA	PRINCIPAL AVAILABLE	SENIOR NOTES	MEZZANIE NOTES	SERIE A PRINCIPAL	VIDA MEDIA	SERIE B PRINCIPAL	VIDA MEDIA
		253.000.000,00	12.000.000,00				
08/07/1999	0,00	253.000.000,00	12.000.000,00	0,00	0,00	0,00	0,00
08/08/1999	0,00	253.000.000,00	12.000.000,00	0,00	0,00	0,00	0,00
08/09/1999	0,00	253.000.000,00	12.000.000,00	0,00	0,00	0,00	0,00
08/10/1999	0,00	253.000.000,00	12.000.000,00	0,00	0,00	0,00	0,00
08/11/1999	16.283.837,27	253.000.000,00	12.000.000,00	16.283.837,27	-83.275.543.781,73	0,00	0,00
08/12/1999	0,00	236.716.162,73	12.000.000,00	0,00	0,00	0,00	0,00
08/01/2000	0,00	236.716.162,73	12.000.000,00	0,00	0,00	0,00	0,00
08/02/2000	9.332.394,79	236.716.162,73	12.000.000,00	9.332.394,79	-46.867.286.616,04	0,00	0,00
08/03/2000	0,00	227.383.767,95	12.000.000,00	0,00	0,00	0,00	0,00
08/04/2000	0,00	227.383.767,95	12.000.000,00	0,00	0,00	0,00	0,00
08/05/2000	9.017.323,42	227.383.767,95	12.000.000,00	9.017.323,42	-44.473.439.127,98	0,00	0,00
08/06/2000	0,00	218.366.444,52	12.000.000,00	0,00	0,00	0,00	0,00
08/07/2000	0,00	218.366.444,52	12.000.000,00	0,00	0,00	0,00	0,00
08/08/2000	8.713.173,80	218.366.444,52	12.000.000,00	8.713.173,80	-42.171.761.169,52	0,00	0,00
08/09/2000	0,00	209.653.270,73	12.000.000,00	0,00	0,00	0,00	0,00
08/10/2000	0,00	209.653.270,73	12.000.000,00	0,00	0,00	0,00	0,00
08/11/2000	8.418.910,40	209.653.270,73	12.000.000,00	8.418.910,40	-39.972.986.556,47	0,00	0,00
08/12/2000	0,00	201.234.360,33	12.000.000,00	0,00	0,00	0,00	0,00
08/01/2001	0,00	201.234.360,33	12.000.000,00	0,00	0,00	0,00	0,00
08/02/2001	8.133.518,37	201.234.360,33	12.000.000,00	8.133.518,37	-37.869.661.521,92	0,00	0,00
08/03/2001	0,00	193.100.841,96	12.000.000,00	0,00	0,00	0,00	0,00
08/04/2001	0,00	193.100.841,96	12.000.000,00	0,00	0,00	0,00	0,00
08/05/2001	7.857.649,79	193.100.841,96	12.000.000,00	7.857.649,79	-35.885.886.611,88	0,00	0,00
08/06/2001	0,00	185.243.192,17	12.000.000,00	0,00	0,00	0,00	0,00
08/07/2001	0,00	185.243.192,17	12.000.000,00	0,00	0,00	0,00	0,00
08/08/2001	7.590.758,50	185.243.192,17	12.000.000,00	7.590.758,50	-33.968.644.266,94	0,00	0,00
08/09/2001	0,00	177.652.433,67	12.000.000,00	0,00	0,00	0,00	0,00
08/10/2001	0,00	177.652.433,67	12.000.000,00	0,00	0,00	0,00	0,00
08/11/2001	7.332.563,36	177.652.433,67	12.000.000,00	7.332.563,36	-32.138.625.210,05	0,00	0,00
08/12/2001	0,00	170.319.870,31	12.000.000,00	0,00	0,00	0,00	0,00
08/01/2002	0,00	170.319.870,31	12.000.000,00	0,00	0,00	0,00	0,00
08/02/2002	7.082.015,26	170.319.870,31	12.000.000,00	7.082.015,26	-30.388.927.466,38	0,00	0,00
08/03/2002	0,00	163.237.855,06	12.000.000,00	0,00	0,00	0,00	0,00
08/04/2002	0,00	163.237.855,06	12.000.000,00	0,00	0,00	0,00	0,00
08/05/2002	6.839.939,91	163.237.855,06	12.000.000,00	6.839.939,91	-28.741.427.509,94	0,00	0,00
08/06/2002	0,00	156.397.915,15	12.000.000,00	0,00	0,00	0,00	0,00
08/07/2002	0,00	156.397.915,15	12.000.000,00	0,00	0,00	0,00	0,00
08/08/2002	6.603.898,45	156.397.915,15	12.000.000,00	6.588.640,43	-27.079.312.149,53	15.258,02	-62.710.472,28
08/09/2002	0,00	149.809.274,72	11.984.741,98	0,00	0,00	0,00	0,00
08/10/2002	0,00	149.809.274,72	11.984.741,98	0,00	0,00	0,00	0,00
08/11/2002	6.376.604,29	149.809.274,72	11.984.741,98	5.904.263,23	-23.723.329.658,63	472.341,06	-1.897.866.372,69
08/12/2002	0,00	143.905.011,49	11.512.400,92	0,00	0,00	0,00	0,00
08/01/2003	0,00	143.905.011,49	11.512.400,92	0,00	0,00	0,00	0,00
08/02/2003	6.157.217,63	143.905.011,49	11.512.400,92	5.701.127,43	-22.382.626.293,97	456.090,19	-1.790.610.103,52
08/03/2003	0,00	138.203.884,06	11.056.310,72	0,00	0,00	0,00	0,00

FECHA	PRINCIPAL AVAILABLE	SENIOR NOTES	MEZZANIE NOTES	SERIE A PRINCIPAL	VIDA MEDIA	SERIE B PRINCIPAL	VIDA MEDIA
08/04/2003	0,00	138.203.884,06	11.056.310,72	0,00	0,00	0,00	0,00
08/05/2003	5.945.182,03	138.203.884,06	11.056.310,72	5.504.798,17	-21.121.910.593,48	440.383,85	-1.689.752.847,48
08/06/2003	0,00	132.699.085,88	10.615.926,87	0,00	0,00	0,00	0,00
08/07/2003	0,00	132.699.085,88	10.615.926,87	0,00	0,00	0,00	0,00
08/08/2003	5.737.757,21	132.699.085,88	10.615.926,87	5.312.738,16	-19.896.204.396,77	425.019,05	-1.591.696.351,74
08/09/2003	0,00	127.386.347,73	10.190.907,82	0,00	0,00	0,00	0,00
08/10/2003	0,00	127.386.347,73	10.190.907,82	0,00	0,00	0,00	0,00
08/11/2003	5.538.364,30	127.386.347,73	10.190.907,82	5.128.115,09	-18.733.004.436,18	410.249,21	-1.498.640.354,89
08/12/2003	0,00	122.258.232,63	9.780.658,61	0,00	0,00	0,00	0,00
08/01/2004	0,00	122.258.232,63	9.780.658,61	0,00	0,00	0,00	0,00
08/02/2004	5.345.756,99	122.258.232,63	9.780.658,61	4.949.774,99	-17.626.148.736,11	395.982,00	-1.410.091.898,89
08/03/2004	0,00	117.308.457,65	9.384.676,61	0,00	0,00	0,00	0,00
08/04/2004	0,00	117.308.457,65	9.384.676,61	0,00	0,00	0,00	0,00
08/05/2004	5.159.880,05	117.308.457,65	9.384.676,61	4.777.666,72	-16.583.281.175,24	382.213,34	-1.326.662.494,02
08/06/2004	0,00	112.530.790,93	9.002.463,27	0,00	0,00	0,00	0,00
08/07/2004	0,00	112.530.790,93	9.002.463,27	0,00	0,00	0,00	0,00
08/08/2004	4.975.706,83	112.530.790,93	9.002.463,27	4.607.135,96	-15.567.512.393,36	368.570,88	-1.245.400.991,47
08/09/2004	0,00	107.923.654,97	8.633.892,40	0,00	0,00	0,00	0,00
08/10/2004	0,00	107.923.654,97	8.633.892,40	0,00	0,00	0,00	0,00
08/11/2004	4.800.045,27	107.923.654,97	8.633.892,40	4.444.486,36	-14.609.026.680,00	355.558,91	-1.168.722.134,40
08/12/2004	0,00	103.479.168,61	8.278.333,49	0,00	0,00	0,00	0,00
08/01/2005	0,00	103.479.168,61	8.278.333,49	0,00	0,00	0,00	0,00
08/02/2005	4.629.147,03	103.479.168,61	8.278.333,49	4.286.247,25	-13.694.559.949,92	342.899,78	-1.095.564.795,99
08/03/2005	0,00	99.192.921,36	7.935.433,71	0,00	0,00	0,00	0,00
08/04/2005	0,00	99.192.921,36	7.935.433,71	0,00	0,00	0,00	0,00
08/05/2005	4.465.569,04	99.192.921,36	7.935.433,71	4.134.786,15	-12.842.645.777,75	330.782,89	-1.027.411.662,22
08/06/2005	0,00	95.058.135,21	7.604.650,82	0,00	0,00	0,00	0,00
08/07/2005	0,00	95.058.135,21	7.604.650,82	0,00	0,00	0,00	0,00
08/08/2005	4.302.581,41	95.058.135,21	7.604.650,82	3.983.871,68	-12.007.389.237,00	318.709,73	-960.591.138,96
08/09/2005	0,00	91.074.263,54	7.285.941,08	0,00	0,00	0,00	0,00
08/10/2005	0,00	91.074.263,54	7.285.941,08	0,00	0,00	0,00	0,00
08/11/2005	4.148.284,13	91.074.263,54	7.285.941,08	3.841.003,82	-11.223.413.172,90	307.280,31	-897.873.053,83
08/12/2005	0,00	87.233.259,71	6.978.660,78	0,00	0,00	0,00	0,00
08/01/2006	0,00	87.233.259,71	6.978.660,78	0,00	0,00	0,00	0,00
08/02/2006	3.999.724,43	87.233.259,71	6.978.660,78	3.703.448,55	-10.480.759.383,59	296.275,88	-838.460.750,69
08/03/2006	0,00	83.529.811,17	6.682.384,89	0,00	0,00	0,00	0,00
08/04/2006	0,00	83.529.811,17	6.682.384,89	0,00	0,00	0,00	0,00
08/05/2006	3.857.326,42	83.529.811,17	6.682.384,89	3.571.598,54	-9.789.751.585,21	285.727,88	-783.180.126,82
08/06/2006	0,00	79.958.212,63	6.396.657,01	0,00	0,00	0,00	0,00
08/07/2006	0,00	79.958.212,63	6.396.657,01	0,00	0,00	0,00	0,00
08/08/2006	3.717.432,83	79.958.212,63	6.396.657,01	3.442.067,44	-9.118.036.644,21	275.365,40	-729.442.931,54
08/09/2006	0,00	76.516.145,19	6.121.291,62	0,00	0,00	0,00	0,00
08/10/2006	0,00	76.516.145,19	6.121.291,62	0,00	0,00	0,00	0,00
08/11/2006	3.583.908,39	76.516.145,19	6.121.291,62	3.318.433,69	-8.485.234.947,06	265.474,70	-678.818.795,76
08/12/2006	0,00	73.197.711,50	5.855.816,92	0,00	0,00	0,00	0,00
08/01/2007	0,00	73.197.711,50	5.855.816,92	0,00	0,00	0,00	0,00
08/02/2007	3.453.112,24	73.197.711,50	5.855.816,92	3.197.326,14	-7.881.408.944,27	255.786,09	-630.512.715,54
08/03/2007	0,00	70.000.385,36	5.600.030,83	0,00	0,00	0,00	0,00
08/04/2007	0,00	70.000.385,36	5.600.030,83	0,00	0,00	0,00	0,00
08/05/2007	3.328.368,66	70.000.385,36	5.600.030,83	3.081.822,83	-7.322.411.055,02	246.545,83	-585.792.884,40
08/06/2007	0,00	66.918.562,52	5.353.485,00	0,00	0,00	0,00	0,00
08/07/2007	0,00	66.918.562,52	5.353.485,00	0,00	0,00	0,00	0,00
08/08/2007	3.202.350,78	66.918.562,52	5.353.485,00	2.965.139,61	-6.772.378.869,12	237.211,17	-541.790.309,53
08/09/2007	0,00	63.953.422,91	5.116.273,83	0,00	0,00	0,00	0,00
08/10/2007	0,00	63.953.422,91	5.116.273,83	0,00	0,00	0,00	0,00
08/11/2007	3.084.186,46	63.953.422,91	5.116.273,83	2.855.728,21	-6.259.756.227,54	228.458,26	-500.780.498,20
08/12/2007	0,00	61.097.694,71	4.887.815,58	0,00	0,00	0,00	0,00
08/01/2008	0,00	61.097.694,71	4.887.815,58	0,00	0,00	0,00	0,00

FECHA	PRINCIPAL AVAILABLE	SENIOR NOTES	MEZZANIE NOTES	SERIE A PRINCIPAL	VIDA MEDIA	SERIE B PRINCIPAL	VIDA MEDIA
08/02/2008	2.960.689,66	61.097.694,71	4.887.815,58	2.741.379,32	-5.756.896.567,13	219.310,35	-460.551.725,37
08/03/2008	0,00	58.356.315,39	4.668.505,23	0,00	0,00	0,00	0,00
08/04/2008	0,00	58.356.315,39	4.668.505,23	0,00	0,00	0,00	0,00
08/05/2008	2.847.965,29	58.356.315,39	4.668.505,23	2.637.004,90	-5.300.379.851,64	210.960,39	-424.030.388,13
08/06/2008	0,00	55.719.310,49	4.457.544,84	0,00	0,00	0,00	0,00
08/07/2008	0,00	55.719.310,49	4.457.544,84	0,00	0,00	0,00	0,00
08/08/2008	2.737.034,75	55.719.310,49	4.457.544,84	2.534.291,44	-4.860.770.980,05	202.743,32	-388.861.678,40
08/09/2008	0,00	53.185.019,05	4.254.801,52	0,00	0,00	0,00	0,00
08/10/2008	0,00	53.185.019,05	4.254.801,52	0,00	0,00	0,00	0,00
08/11/2008	2.634.104,86	53.185.019,05	4.254.801,52	2.438.985,98	-4.453.588.406,67	195.118,88	-356.287.072,53
08/12/2008	0,00	50.746.033,07	4.059.682,65	0,00	0,00	0,00	0,00
08/01/2009	0,00	50.746.033,07	4.059.682,65	0,00	0,00	0,00	0,00
08/02/2009	2.534.075,36	50.746.033,07	4.059.682,65	2.346.366,08	-4.068.598.777,78	187.709,29	-325.487.902,22
08/03/2009	0,00	48.399.666,99	3.871.973,36	0,00	0,00	0,00	0,00
08/04/2009	0,00	48.399.666,99	3.871.973,36	0,00	0,00	0,00	0,00
08/05/2009	2.439.772,66	48.399.666,99	3.871.973,36	2.259.048,76	-3.716.135.215,04	180.723,90	-297.290.817,20
08/06/2009	0,00	46.140.618,23	3.691.249,46	0,00	0,00	0,00	0,00
08/07/2009	0,00	46.140.618,23	3.691.249,46	0,00	0,00	0,00	0,00
08/08/2009	2.343.824,14	46.140.618,23	3.691.249,46	2.170.207,54	-3.370.332.309,19	173.616,60	-269.626.584,74
08/09/2009	0,00	43.970.410,69	3.517.632,85	0,00	0,00	0,00	0,00
08/10/2009	0,00	43.970.410,69	3.517.632,85	0,00	0,00	0,00	0,00
08/11/2009	2.254.771,88	43.970.410,69	3.517.632,85	2.087.751,74	-3.050.205.287,76	167.020,14	-244.016.423,02
08/12/2009	0,00	41.882.658,95	3.350.612,72	0,00	0,00	0,00	0,00
08/01/2010	0,00	41.882.658,95	3.350.612,72	0,00	0,00	0,00	0,00
08/02/2010	2.164.624,71	41.882.658,95	3.350.612,72	2.004.282,14	-2.743.862.244,86	160.342,57	-219.508.979,59
08/03/2010	0,00	39.878.376,81	3.190.270,15	0,00	0,00	0,00	0,00
08/04/2010	0,00	39.878.376,81	3.190.270,15	0,00	0,00	0,00	0,00
08/05/2010	2.081.451,53	39.878.376,81	3.190.270,15	1.927.269,93	-2.466.905.515,53	154.181,59	-197.352.441,24
08/06/2010	0,00	37.951.106,88	3.036.088,55	0,00	0,00	0,00	0,00
08/07/2010	0,00	37.951.106,88	3.036.088,55	0,00	0,00	0,00	0,00
08/08/2010	1.992.307,91	37.951.106,88	3.036.088,55	1.606.219,36	-1.908.188.599,40	386.088,55	-458.673.197,77
08/09/2010	0,00	36.344.887,52	2.650.000,00	0,00	0,00	0,00	0,00
08/10/2010	0,00	36.344.887,52	2.650.000,00	0,00	0,00	0,00	0,00
08/11/2010	1.912.709,34	36.344.887,52	2.650.000,00	1.912.709,34	-2.096.329.434,42	0,00	0,00
08/12/2010	0,00	34.432.178,18	2.650.000,00	0,00	0,00	0,00	0,00
08/01/2011	0,00	34.432.178,18	2.650.000,00	0,00	0,00	0,00	0,00
08/02/2011	1.834.031,38	34.432.178,18	2.650.000,00	1.834.031,38	-1.841.367.508,50	0,00	0,00
08/03/2011	0,00	32.598.146,80	2.650.000,00	0,00	0,00	0,00	0,00
08/04/2011	0,00	32.598.146,80	2.650.000,00	0,00	0,00	0,00	0,00
08/05/2011	1.762.151,71	32.598.146,80	2.650.000,00	1.762.151,71	-1.612.368.810,64	0,00	0,00
08/06/2011	0,00	30.835.995,09	2.650.000,00	0,00	0,00	0,00	0,00
08/07/2011	0,00	30.835.995,09	2.650.000,00	0,00	0,00	0,00	0,00
08/08/2011	1.687.479,46	30.835.995,09	2.650.000,00	1.687.479,46	-1.388.795.597,68	0,00	0,00
08/09/2011	0,00	29.148.515,63	2.650.000,00	0,00	0,00	0,00	0,00
08/10/2011	0,00	29.148.515,63	2.650.000,00	0,00	0,00	0,00	0,00
08/11/2011	1.620.109,47	29.148.515,63	2.650.000,00	1.620.109,47	-1.184.300.025,89	0,00	0,00
08/12/2011	0,00	27.528.406,16	2.650.000,00	0,00	0,00	0,00	0,00
08/01/2012	0,00	27.528.406,16	2.650.000,00	0,00	0,00	0,00	0,00
08/02/2012	1.552.097,62	27.528.406,16	2.650.000,00	1.552.097,62	-991.790.381,86	0,00	0,00
08/03/2012	0,00	25.976.308,53	2.650.000,00	0,00	0,00	0,00	0,00
08/04/2012	0,00	25.976.308,53	2.650.000,00	0,00	0,00	0,00	0,00
08/05/2012	1.490.273,65	25.976.308,53	2.650.000,00	1.490.273,65	-818.160.236,38	0,00	0,00
08/06/2012	0,00	24.486.034,88	2.650.000,00	0,00	0,00	0,00	0,00
08/07/2012	0,00	24.486.034,88	2.650.000,00	0,00	0,00	0,00	0,00
08/08/2012	1.411.428,36	24.486.034,88	2.650.000,00	1.411.428,36	-645.022.759,93	0,00	0,00
08/09/2012	0,00	23.074.606,52	2.650.000,00	0,00	0,00	0,00	0,00
08/10/2012	0,00	23.074.606,52	2.650.000,00	0,00	0,00	0,00	0,00
08/11/2012	1.347.221,39	23.074.606,52	2.650.000,00	1.347.221,39	-491.735.805,59	0,00	0,00

FECHA	PRINCIPAL AVAILABLE	SENIOR NOTES	MEZZANIE NOTES	SERIE A PRINCIPAL	VIDA MEDIA	SERIE B PRINCIPAL	VIDA MEDIA
08/12/2012	0,00	21.727.385,13	2.650.000,00	0,00	0,00	0,00	0,00
08/01/2013	0,00	21.727.385,13	2.650.000,00	0,00	0,00	0,00	0,00
08/02/2013	1.269.649,34	21.727.385,13	2.650.000,00	1.269.649,34	-346.614.269,61	0,00	0,00
11/03/2013	0,00	20.457.735,79	2.650.000,00	0,00	0,00	0,00	0,00
11/04/2013	0,00	20.457.735,79	2.650.000,00	0,00	0,00	0,00	0,00
12/05/2013	1.208.792,95	20.457.735,79	2.650.000,00	1.208.792,95	-217.582.730,56	0,00	0,00
12/06/2013	0,00	19.248.942,85	2.650.000,00	0,00	0,00	0,00	0,00
13/07/2013	0,00	19.248.942,85	2.650.000,00	0,00	0,00	0,00	0,00
13/08/2013	1.143.700,78	19.248.942,85	2.650.000,00	1.143.700,78	-99.501.968,12	0,00	0,00
13/09/2013	0,00	18.105.242,06	2.650.000,00	0,00	0,00	0,00	0,00
14/10/2013	0,00	18.105.242,06	2.650.000,00	0,00	0,00	0,00	0,00
14/11/2013	1.091.089,22	18.105.242,06	2.650.000,00	1.091.089,22	6.546.535,34	0,00	0,00