



F.T.H. UCI 5

MARIA JOSE HERENCIAS PALOMINO

ANALYST

SANTANDER DE TITULIZACION, S.G.F.T, S.A.

CIUDAD GRUPO SANTANDER

28660 BOADILLA DEL MONTE

marjherencias@gruposantander.com

Tel: 912893300



NAME OF THE FUND:

F.T.H. UCI 5

INFORMATION AT:

QUARTER/SEMESTER:

February 17, 2014 - May 16, 2014

YEAR:

2014

Acting on behalf of Santander de Titulización S.G.F.T., S.A. as General Manager:	Signature:
IGNACIO ORTEGA GAVARA - GENERAL MANAGER	

I. DATA OF THE FUND

Constitution Date	June 03, 1999	Paying Agent	BANCO SANTANDER	
Disbursement Date	June 08, 1999	Negotiation Market	AIAF	
Final Date of Redemption	February 15, 2029	Ratings Agencies	MOODY'S ESPAÑA	
Management Company	SANTANDER DE TITULIZACION, S.G.F.T, S.A.	Rating	Initial	Current
Credit Rights's Seller	UNION DE CREDITOS INMOBILIARIOS	CLASS A	Aaa	A1
		CLASS B	A2	Baa2

II. SECURITIES ISSUED CHARGED TO THE FUND: SECURITISATION BONDS

CLASS PRIORITY ISIN CODE	NUM BONDS	NOMINAL			
			Initial	Current	%Act/In
CLASS A ES0338557004	2.530	Nominal per Bond	100.000,00	6.183,52	
		Total Nominal	253.000.000,00	15.644.305,60	6,18 %
CLASS B ES0338557012	120	Nominal per Bond	100.000,00	22.083,33	
		Total Nominal	12.000.000,00	2.649.999,99	22,08 %

REDEMPTION AND INTEREST OF THE BONDS					
Current			Next		
Payment Date of the Current Period May 16, 2014			Next Payment Date null		
	Redemption of the Bonds	Gross Interest	Interest Rate	Gross Interest Next Coupon	Net Interest Next Coupon
CLASS A	265,22 €	8,17 €	0,5658 %	9,01 €	7,12 €
CLASS B	0,00 €	49,29 €	0,9662 %	54,95 €	43,41 €
Accrued amortisation due not payed	0,00 €				
Scheduled Amortisation	NO				



III. ASSET PURCHASED BY THE FUND: CREDIT RIGHTS

CREDIT RIGHTS	ISSUE DATE	CURRENT DATE
Numbre of CR's	5.502	944
CR's Outstanding to be amortised	265.000.190,10	18.294.301,65
CR's Outstanding per Loan to be amortised	48.164,34	19.379,56
Interest Rate	5,10 %	1,83 %

PREPAYMENT RATE	CURRENT SITUATION
Monthly Single Rate	2,61 %
Average Monthly Single Rate	4,33 %
Constant Prepayment Rate from Constitution	11,30 %

CURRENT DELINQUENCY	Up to 1 month	From 1 to 6 months	Greater than 6 months
Debt Due (Principal + Interest)	6.703,39	9.998,64	21.692,84
Debt to be amortised	0,00	0,00	18.264.957,40
Total Debt	6.703,39	9.998,64	18.286.650,24

F.T.H. UCI 5

QUARTERLY BONDS PAYOUT REPORT

2014/05/16

BONDS. PRINCIPAL	
Previous Balance	18.965.311,80 €
Principal Amortised	671.006,60 €
Outstanding Balance	18.294.305,20 €
% of Initial Balance	6,90%
Principal accrued and unpaid	0,00 €

DATA	
Determination Date	2014/05/08
Payment Date	2014/05/16
Last Payment Date	2014/02/17
Number of Days (Act/360)	88
Reference Interest Rate (%)	0,328%
Next Payment Date	2014/08/18

INTEREST PAID	
CLASS A	20.670,10 €
CLASS B	5.914,80 €
Interest accrued and unpaid	0,00 €

RESIDUAL LIFE (YEARS)		
	INITIAL	2014/05/16
CLASS A	7,50	0,29
CLASS B	10,40	0,29

F.T.H. UCI 5

QUARTERLY COLLATERAL REPORT

2014/05/16

PRINCIPAL

Previous Balance	18.965.305,51 €
Principal Amortised	671.003,86 €
Outstanding Balance	18.294.301,65 €
Number of Credit Rights	944
LTV	25,91%

INTEREST

Interest received during relevant period	82.159,05 €
Interest accrued during relevant period	63.146,73 €

PRINCIPAL BALANCE IN ARREARS

	UP to 30 DAYS	30 to 60 DAYS	60 to 90 DAYS	90 to 180 DAYS	180 TO 365 DAYS	> 365 DAYS
Principal Balance in Arrears	5.576,28 €	1.034,08 €	3.609,88 €	3.935,95 €	3.152,58 €	12.035,48 €
Interest accrued on Credit Rights in Arrears	1.127,11 €	168,81 €	520,55 €	729,37 €	331,43 €	6.173,35 €
Outstanding Balance	784.283,92 €	79.862,29 €	136.192,09 €	105.588,92 €	34.427,97 €	179.861,32 €
Number of Credit Rights	34	4	5	3	3	5
% of Outstanding Balance	4,29%	0,44%	0,74%	0,58%	0,19%	0,98%

F.T.H. UCI 5

QUARTERLY REPORT - ALLOCATION OF CASH

2014/05/16

TOTAL CASH RECEIVED END OF PERIOD	753.174,30 €
CASH RECEIVED - PRINCIPAL	
Amortisation of Credit Rights	671.003,86 €
CASH RECEIVED - INTEREST	
Interest received from Credit Rights	82.159,05 €
Interest received under GIC	11,39 €
CONTENTIOUS / JUDICIALS	0,00 €
OTHERS	0,00 €

TOTAL CASH PAID END OF PERIOD	753.174,30 €
ORDINARY EXPENSES	319,44 €
MANAGEMENT FEE	2.514,85 €
INTEREST PAID TO BTH's CLASS A	20.670,10 €
INTEREST PAID TO BTH's CLASS B	5.914,80 €
REDEMPTION PAID TO BTH's CLASS A	671.006,60 €
REDEMPTION PAID TO BTH's CLASS B	0,00 €
INTEREST PAID ON SUBORDINATED LOAN A (SANTANDER)	2.365,77 €
INTEREST PAID ON SUBORDINATED LOAN A (PARIBAS)	2.365,77 €
ADMINISTRATION FEE	6.000,00 €
VARIABLE FEE	42.016,97 €

TREASURY ACCOUNT STATEMENT	2.650.000,00 €
PRINCIPAL RESERVE FUND	
Previous Balance	2.650.000,00 €
Period utilization	0,00 €
Outstanding Balance	2.650.000,00 €

F.T.H. UCI 5

CREDIT ENHACEMENT AND SUBORDINATED LOAN

2014/05/16

CREDIT ENHACEMENT		
CONCEPTS	INITIAL	2014/05/16
SUBORDINATED ISSUE	4,53 %	14,49%
PRINCIPAL RESERVE FUND	5.565.000,00 € (2,10 %)	2.650.000,00 € 14,49%

SUBORDINATED LOANS		
CONCEPTS	INITIAL	2014/05/16
SUBORDINATED LOAN A SANTANDER		
Total Outstanding Subordinated Loan	3.220.523,36 €	1.326.021,73 €
Interest Rate	3,620%	0,73%
SUBORDINATED LOAN A PARIBAS		
Total Outstanding Subordinated Loan	3.220.523,36 €	1.326.021,72 €
Interest Rate	3,620%	0,73%

F.T.H. UCI 5

DEFINITIONS

DETERMINATION DATE Means the date in which the Gestora will carry out the necessary calculations, on behalf of the Fund, for the distribution of the available funds at this date, according with the Order of Priority of Payments.

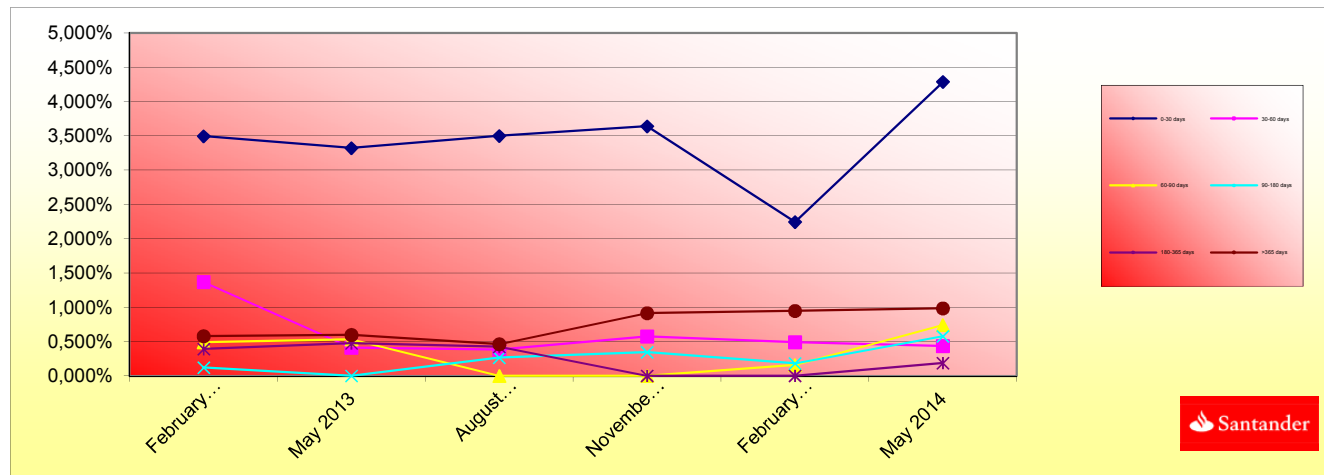
All the information regarding the Assets (Outstanding Balance of the Credit Rights, arrears' tables, transitory properties, stratification tables, etc.) are referred to this mentioned date.

TRANSITORY PROPERTIES Those assets in the balance of the Fund as a consequence of a judicial or non-judicial process.

**FONDO DE TITULIZACIÓN HIPOTECARIA
UCI 5**

HISTORICAL ARREARS REPORT

Data	February 2013	May 2013	August 2013	November 2013	February 2014	May 2014
0-30 days	3,497%	3,322%	3,500%	3,643%	2,247%	4,287%
30-60 days	1,368%	0,411%	0,384%	0,575%	0,490%	0,437%
60-90 days	0,489%	0,532%	0,000%	0,000%	0,157%	0,744%
90-180 days	0,124%	0,000%	0,268%	0,347%	0,181%	0,577%
180-365 days	0,394%	0,477%	0,424%	0,000%	0,000%	0,188%
>365 days	0,577%	0,600%	0,463%	0,915%	0,946%	0,983%



**FONDO DE TITULIZACION DE ACTIVOS
UCI 5**

TRIGGERS

TRIGGERS BONDS

1. IF 1.a) IS HIGHER THAN 1.b) THERE IS NO REDEMPTION OF CLASS B:

1.a) MP'S IN ARREARS OVER 90 DAYS	319.878,21 €
1.b) 7% MP'S OUTSTANDING BALANCE	1.280.601,12 €

TRIGGERS RESERVE FUND

1. IF 1.a) IS HIGHER THAN 1.b) THERE IS NO REDEMPTION OF RESERVE FUND:

1.a) MP'S IN ARREARS OVER 90 DAYS	N/A
1.b) 3% MP'S OUTSTANDING BALANCE	N/A

2. IF 2.a) IS LOWER THAN 2.b) THERE IS NO REDEMPTION OF RESERVE FUND:

2.a) WEIGHTED AVERAGE RATE MP'S	N/A
2.b) WEIGHTED AVERAGE RATE BONDS A AND B + 0,25%	N/A

3. IF 3.a) IS HIGHER THAN 3.b) THERE IS NO REDEMPTION OF RESERVE FUND:

3.a) WRITTE OFF	N/A
3.b) 0,025% INITIAL OUTSTANDING BALANCE MP'S *N/A PAYMENT DATES	N/A

THE RESERV FUND IS IN MINIMUN LEVEL REQUIERED EQUIVALENT TO 1% OF THE INITIAL MP'S OUTSTANDING BALANCE

**FONDO DE TITULIZACIÓN HIPOTECARIA
UCI 5**

L.T.V.

LTV (%)	OUTS. BALANC	% OUTSTANDING	LOANS	% LOANS
	SALDOS VIVOS	% SALDOS VIVOS	Nº. DE PRESTAMOS	% Nº DE PRESTAMOS
0,02-9,99	739.754,09	4,0434%	139	14,7246%
10,00 - 19,99	3.261.208,14	17,8253%	270	28,6017%
20,00 - 29,99	2.963.463,24	16,1979%	142	15,0424%
30,00 - 39,99	5.758.704,59	31,4763%	218	23,0932%
40,00 - 49,99	5.156.249,86	28,1834%	162	17,1610%
50,00 - 59,99	364.668,13	1,9932%	12	1,2712%
60,00 - 70,00	50.253,60	0,2805%	1	0,1059%

F.T.H.: UCI 5

Counterpart

Agreement	Counterpart	Rating Agency	Minimum rating	Current rating
Treasury account	Banco Santander S.A.	Moody's	S/T: P-1	P-2

COUNTERPARTY DOES NOT HAVE THE MINIMUM RATING REQUIRED. TREASURY ACCOUNT HAS BEEN TRANSFERRED TO A COUNTERPARTY WITH MINIMUM RATING REQUIRED.

UCI 5

Date	Real Outstanding	1,02%		Average Single monthly mortality	CPR	Monthly Single monthly mortality	4,33%
		Prepayment vector	Remaining at the end of the month				CPR
	265.000.190,1		100,00%	100,00%			
julio-99	264.353.986,2	261.013.400,2	98,98%	98,74%	1,26%	14,15%	1,26%
agosto-99	263.705.035,9	257.903.244,9	97,98%	97,80%	1,11%	12,50%	0,95%
septiembre-99	263.053.327,6	256.480.934,6	96,98%	97,50%	0,84%	9,63%	0,31%
octubre-99	262.398.849,6	254.314.688,6	96,00%	96,92%	0,78%	8,96%	0,60%
noviembre-99	261.741.590,0	252.653.080,9	95,02%	96,53%	0,70%	8,13%	0,40%
diciembre-99	261.081.537,0	249.659.606,1	94,06%	95,63%	0,74%	8,56%	0,93%
enero-00	260.419.897,8	247.491.249,5	93,10%	95,04%	0,72%	8,36%	0,62%
febrero-00	259.755.446,6	245.717.575,5	92,16%	94,60%	0,69%	8,00%	0,46%
marzo-00	259.088.171,5	243.447.809,7	91,22%	93,96%	0,69%	7,97%	0,67%
abril-00	258.418.060,5	240.457.172,0	90,29%	93,05%	0,72%	8,28%	0,97%
mayo-00	257.745.101,5	238.473.761,8	89,38%	92,52%	0,70%	8,13%	0,57%
junio-00	257.069.282,4	236.040.146,9	88,47%	91,82%	0,71%	8,18%	0,76%
julio-00	256.390.750,2	233.330.106,1	87,57%	91,01%	0,72%	8,33%	0,89%
agosto-00	255.709.334,2	231.317.292,6	86,68%	90,46%	0,71%	8,23%	0,60%
septiembre-00	255.025.022,2	229.266.542,5	85,80%	89,90%	0,71%	8,17%	0,62%
octubre-00	254.337.801,8	227.277.014,1	84,93%	89,36%	0,70%	8,09%	0,60%
noviembre-00	253.647.660,8	225.218.773,1	84,07%	88,79%	0,70%	8,05%	0,64%
diciembre-00	252.954.586,7	222.849.442,2	83,21%	88,10%	0,70%	8,10%	0,78%
enero-01	252.258.993,8	219.871.311,8	82,37%	87,16%	0,72%	8,31%	1,06%
febrero-01	251.560.444,6	217.695.642,5	81,53%	86,54%	0,72%	8,31%	0,71%
marzo-01	250.858.926,6	215.432.234,4	80,70%	85,88%	0,72%	8,33%	0,76%
abril-01	250.154.427,1	212.536.457,5	79,88%	84,96%	0,74%	8,51%	1,07%
mayo-01	249.446.933,5	209.818.457,4	79,07%	84,11%	0,75%	8,63%	1,00%
junio-01	248.736.433,1	206.739.491,5	78,27%	83,12%	0,77%	8,83%	1,19%
julio-01	248.023.060,0	203.095.332,4	77,47%	81,89%	0,80%	9,15%	1,48%
agosto-01	247.306.655,1	200.264.043,8	76,69%	80,98%	0,81%	9,28%	1,11%
septiembre-01	246.587.205,5	198.420.530,8	75,91%	80,47%	0,80%	9,21%	0,63%
octubre-01	245.864.698,2	195.833.760,9	75,14%	79,65%	0,81%	9,29%	1,01%
noviembre-01	245.139.120,3	193.484.003,6	74,37%	78,93%	0,81%	9,33%	0,91%
diciembre-01	244.410.458,7	190.106.061,4	73,62%	77,78%	0,83%	9,56%	1,45%
enero-02	243.679.232,8	187.678.028,1	72,87%	77,02%	0,84%	9,61%	0,98%
febrero-02	242.944.899,3	185.061.871,5	72,13%	76,17%	0,85%	9,70%	1,10%
marzo-02	242.207.444,8	181.647.819,3	71,40%	75,00%	0,87%	9,93%	1,55%
abril-02	241.466.856,1	178.351.253,9	70,67%	73,86%	0,89%	10,14%	1,51%
mayo-02	240.723.120,0	174.919.259,5	69,96%	72,66%	0,91%	10,37%	1,62%
junio-02	239.976.222,9	171.288.232,4	69,24%	71,38%	0,93%	10,63%	1,77%
julio-02	239.227.731,7	168.000.812,5	68,54%	70,23%	0,95%	10,83%	1,61%
agosto-02	238.476.059,3	165.450.625,4	67,84%	69,38%	0,96%	10,90%	1,21%
septiembre-02	237.721.192,4	163.236.867,0	67,16%	68,67%	0,96%	10,92%	1,02%
octubre-02	236.963.117,3	161.039.181,7	66,47%	67,96%	0,96%	10,94%	1,03%
noviembre-02	236.201.820,3	159.057.604,1	65,80%	67,34%	0,96%	10,93%	0,91%
diciembre-02	235.437.287,9	156.488.093,0	65,13%	66,47%	0,97%	11,02%	1,30%
enero-03	234.669.893,6	154.282.351,2	64,47%	65,74%	0,97%	11,05%	1,09%

							4,33%	
Date	Real Outstanding		1,02%	Remaining at the end of the month	Average Single monthly mortality	CPR	Monthly Single monthly mortality	CPR
			Prepayment vector					
	febrero-03	233.899.237,9	151.506.462,2	63,81%	64,77%	0,98%	11,17%	1,48%
marzo-03	233.125.307,0	148.727.230,4	63,17%	63,80%	0,99%	11,30%	1,51%	16,67%
abril-03	232.348.086,8	146.215.615,1	62,52%	62,93%	1,00%	11,38%	1,36%	15,15%
mayo-03	231.567.563,5	143.479.637,3	61,89%	61,96%	1,01%	11,50%	1,54%	17,00%
junio-03	230.783.722,9	140.702.135,4	61,26%	60,97%	1,03%	11,64%	1,60%	17,62%
julio-03	229.998.623,8	137.162.888,3	60,64%	59,64%	1,05%	11,89%	2,18%	23,27%
agosto-03	229.210.188,1	133.747.799,5	60,02%	58,35%	1,07%	12,13%	2,15%	23,00%
septiembre-03	228.418.401,6	130.947.326,4	59,41%	57,33%	1,09%	12,27%	1,75%	19,14%
octubre-03	227.623.249,9	127.272.068,0	58,81%	55,91%	1,11%	12,56%	2,47%	25,90%
noviembre-03	226.824.718,9	123.286.705,2	58,21%	54,35%	1,14%	12,89%	2,79%	28,79%
diciembre-03	226.022.794,1	120.012.588,8	57,62%	53,10%	1,17%	13,12%	2,31%	24,46%
enero-04	225.218.267,8	117.053.168,8	57,04%	51,97%	1,18%	13,31%	2,12%	22,65%
febrero-04	224.410.322,2	115.078.520,2	56,46%	51,28%	1,19%	13,33%	1,33%	14,87%
marzo-04	223.598.942,9	112.415.752,4	55,88%	50,28%	1,20%	13,48%	1,96%	21,14%
abril-04	222.784.115,2	110.174.701,8	55,31%	49,45%	1,21%	13,56%	1,64%	17,95%
mayo-04	221.965.824,5	107.622.167,6	54,75%	48,49%	1,22%	13,69%	1,96%	21,11%
junio-04	221.144.056,1	104.717.994,6	54,20%	47,35%	1,24%	13,89%	2,34%	24,71%
julio-04	220.323.291,5	102.363.258,3	53,65%	46,46%	1,25%	14,00%	1,88%	20,41%
agosto-04	219.499.038,7	100.064.133,0	53,10%	45,59%	1,26%	14,10%	1,88%	20,36%
septiembre-04	218.671.282,7	98.428.470,1	52,56%	45,01%	1,26%	14,11%	1,26%	14,14%
octubre-04	217.840.008,9	96.233.838,6	52,03%	44,18%	1,27%	14,20%	1,86%	20,14%
noviembre-04	217.005.202,1	94.758.562,0	51,50%	43,67%	1,27%	14,18%	1,15%	13,00%
diciembre-04	216.166.847,4	92.484.371,8	50,98%	42,78%	1,28%	14,30%	2,02%	21,73%
enero-05	215.328.250,6	90.417.486,9	50,46%	41,99%	1,29%	14,39%	1,85%	20,11%
febrero-05	214.486.089,7	88.331.108,7	49,95%	41,18%	1,30%	14,49%	1,92%	20,79%
marzo-05	213.640.349,7	86.068.896,1	49,44%	40,29%	1,31%	14,62%	2,18%	23,20%
abril-05	212.791.015,3	84.072.439,5	48,94%	39,51%	1,32%	14,72%	1,93%	20,85%
mayo-05	211.938.071,2	81.894.420,0	48,44%	38,64%	1,33%	14,85%	2,20%	23,42%
junio-05	211.081.502,1	79.530.987,7	47,95%	37,68%	1,35%	15,01%	2,49%	26,13%
julio-05	210.228.080,2	78.139.862,7	47,46%	37,17%	1,35%	15,01%	1,35%	15,05%
agosto-05	209.371.031,1	76.205.933,6	46,98%	36,40%	1,36%	15,12%	2,08%	22,25%
septiembre-05	208.510.339,7	74.860.166,0	46,50%	35,90%	1,36%	15,12%	1,36%	15,16%
octubre-05	207.645.990,2	72.931.928,1	46,03%	35,12%	1,37%	15,23%	2,17%	23,15%
noviembre-05	206.777.967,3	71.286.868,8	45,56%	34,48%	1,37%	15,29%	1,85%	20,03%
diciembre-05	205.906.255,3	69.528.590,7	45,10%	33,77%	1,38%	15,38%	2,05%	22,04%
enero-06	205.033.628,0	68.235.195,8	44,64%	33,28%	1,38%	15,39%	1,44%	16,00%
febrero-06	204.157.292,1	66.446.036,5	44,19%	32,55%	1,39%	15,50%	2,20%	23,47%
marzo-06	203.277.231,7	65.146.093,0	43,74%	32,05%	1,40%	15,51%	1,53%	16,91%
abril-06	202.393.431,0	63.564.098,9	43,29%	31,41%	1,40%	15,59%	2,00%	21,55%
mayo-06	201.505.874,2	62.426.386,6	42,85%	30,98%	1,40%	15,58%	1,36%	15,12%
junio-06	200.614.545,3	61.098.222,6	42,42%	30,46%	1,41%	15,62%	1,69%	18,52%
julio-06	199.723.488,6	59.978.865,1	41,99%	30,03%	1,41%	15,62%	1,39%	15,50%
agosto-06	198.828.644,9	59.075.688,1	41,56%	29,71%	1,40%	15,58%	1,06%	12,03%
septiembre-06	197.929.998,2	58.383.870,3	41,14%	29,50%	1,39%	15,50%	0,72%	8,33%
octubre-06	197.027.532,2	57.611.065,2	40,72%	29,24%	1,39%	15,44%	0,87%	9,97%
noviembre-06	196.121.230,7	56.814.660,6	40,31%	28,97%	1,38%	15,38%	0,93%	10,57%
diciembre-06	195.211.077,4	55.845.313,7	39,90%	28,61%	1,38%	15,37%	1,25%	13,99%
enero-07	194.301.305,5	54.966.798,6	39,49%	28,29%	1,38%	15,34%	1,11%	12,56%
febrero-07	193.387.667,0	53.889.758,7	39,09%	27,87%	1,38%	15,35%	1,50%	16,55%
marzo-07	192.470.145,5	52.978.863,2	38,70%	27,53%	1,38%	15,33%	1,22%	13,71%
abril-07	191.548.724,5	52.182.528,3	38,30%	27,24%	1,37%	15,30%	1,03%	11,68%
mayo-07	190.623.387,6	51.279.341,8	37,91%	26,90%	1,37%	15,28%	1,25%	14,05%
junio-07	189.694.117,9	50.018.067,9	37,53%	26,37%	1,38%	15,35%	1,98%	21,35%

Date	Real Outstanding	1,02%		Average Single monthly mortality	CPR	Monthly Single monthly mortality	4,33%	
		Prepayment vector	Remaining at the end of the month				CPR	
								CPR
julio-07	188.770.434,1	49.383.970,4	37,15%	26,16%	1,37%	15,29%	0,78%	9,02%
agosto-07	187.842.824,6	48.690.936,0	36,77%	25,92%	1,37%	15,24%	0,92%	10,46%
septiembre-07	186.911.272,7	48.143.078,1	36,40%	25,76%	1,36%	15,16%	0,63%	7,33%
octubre-07	185.975.761,8	47.614.819,1	36,03%	25,60%	1,35%	15,08%	0,60%	6,96%
noviembre-07	185.036.275,0	46.977.478,4	35,66%	25,39%	1,35%	15,03%	0,84%	9,60%
diciembre-07	184.092.795,3	46.071.049,9	35,30%	25,03%	1,35%	15,04%	1,43%	15,84%
enero-08	183.163.640,0	45.357.426,9	34,94%	24,76%	1,35%	15,01%	1,05%	11,89%
febrero-08	182.230.535,9	44.809.637,5	34,59%	24,59%	1,34%	14,94%	0,70%	8,10%
marzo-08	181.293.466,0	44.216.232,1	34,23%	24,39%	1,33%	14,89%	0,81%	9,35%
abril-08	180.352.413,5	43.469.446,6	33,89%	24,10%	1,33%	14,88%	1,18%	13,23%
mayo-08	179.407.361,6	42.897.712,5	33,54%	23,91%	1,33%	14,83%	0,80%	9,14%
junio-08	178.458.293,3	42.147.278,9	33,20%	23,62%	1,33%	14,82%	1,23%	13,77%
julio-08	177.517.804,9	41.602.305,7	32,86%	23,44%	1,32%	14,76%	0,77%	8,86%
agosto-08	176.573.319,5	40.960.135,8	32,53%	23,20%	1,32%	14,73%	1,02%	11,54%
septiembre-08	175.624.820,0	40.490.560,5	32,20%	23,06%	1,31%	14,67%	0,61%	7,11%
octubre-08	174.672.289,5	40.107.446,3	31,87%	22,96%	1,31%	14,58%	0,41%	4,76%
noviembre-08	173.715.710,6	39.597.674,6	31,55%	22,79%	1,30%	14,53%	0,73%	8,39%
diciembre-08	172.755.066,3	39.178.088,7	31,23%	22,68%	1,29%	14,46%	0,51%	5,94%
enero-09	171.797.806,3	38.706.315,0	30,91%	22,53%	1,29%	14,40%	0,65%	7,57%
febrero-09	170.836.477,9	38.329.263,7	30,60%	22,44%	1,28%	14,32%	0,42%	4,89%
marzo-09	169.871.063,9	37.916.294,6	30,29%	22,32%	1,27%	14,26%	0,52%	6,01%
abril-09	168.901.546,9	37.603.809,8	29,98%	22,26%	1,26%	14,17%	0,25%	3,02%
mayo-09	167.927.909,4	37.252.714,2	29,67%	22,18%	1,26%	14,09%	0,36%	4,23%
junio-09	166.950.134,0	36.856.641,4	29,37%	22,08%	1,25%	14,02%	0,48%	5,65%
julio-09	165.980.411,5	36.389.069,9	29,07%	21,92%	1,25%	13,97%	0,69%	7,99%
agosto-09	165.006.567,7	36.017.087,7	28,78%	21,83%	1,24%	13,90%	0,44%	5,13%
septiembre-09	164.028.585,1	35.618.461,1	28,49%	21,71%	1,23%	13,84%	0,52%	6,03%
octubre-09	163.046.446,0	35.235.370,7	28,20%	21,61%	1,23%	13,78%	0,48%	5,61%
noviembre-09	162.060.132,9	34.880.086,1	27,91%	21,52%	1,22%	13,71%	0,41%	4,76%
diciembre-09	161.069.627,9	34.232.283,8	27,63%	21,25%	1,22%	13,71%	1,25%	14,05%
enero-10	160.088.816,9	33.803.668,5	27,35%	21,12%	1,22%	13,67%	0,65%	7,49%
febrero-10	159.103.837,5	33.397.900,7	27,07%	20,99%	1,21%	13,61%	0,59%	6,84%
marzo-10	158.114.671,8	33.044.002,3	26,79%	20,90%	1,21%	13,55%	0,44%	5,16%
abril-10	157.121.302,3	32.646.459,1	26,52%	20,78%	1,20%	13,50%	0,58%	6,72%
mayo-10	156.123.710,9	32.239.836,4	26,25%	20,65%	1,20%	13,45%	0,61%	7,13%
junio-10	155.121.879,7	31.934.481,1	25,99%	20,59%	1,19%	13,38%	0,31%	3,63%
julio-10	154.140.242,3	31.519.729,7	25,72%	20,45%	1,19%	13,34%	0,67%	7,75%
agosto-10	153.154.432,9	31.170.803,3	25,46%	20,35%	1,18%	13,29%	0,47%	5,50%
septiembre-10	152.164.433,8	30.851.818,8	25,20%	20,28%	1,18%	13,22%	0,38%	4,46%
octubre-10	151.170.227,2	30.477.131,0	24,95%	20,16%	1,17%	13,18%	0,56%	6,57%
noviembre-10	150.171.795,2	30.079.763,9	24,69%	20,03%	1,17%	13,14%	0,65%	7,50%
diciembre-10	149.169.119,9	29.766.288,9	24,44%	19,95%	1,16%	13,08%	0,38%	4,43%
enero-11	148.178.674,7	29.343.246,4	24,19%	19,80%	1,16%	13,05%	0,76%	8,77%
febrero-11	147.184.020,2	28.899.715,1	23,95%	19,64%	1,16%	13,02%	0,85%	9,69%
marzo-11	146.185.138,4	28.477.477,3	23,71%	19,48%	1,15%	13,00%	0,79%	9,05%
abril-11	145.182.011,3	28.149.264,4	23,46%	19,39%	1,15%	12,95%	0,47%	5,49%
mayo-11	144.174.621,0	27.875.506,2	23,23%	19,33%	1,14%	12,88%	0,28%	3,32%
junio-11	143.162.949,2	27.531.658,58	22,99%	19,23%	1,14%	12,84%	0,54%	6,24%
julio-11	142.167.173,2	27.255.890,1	22,76%	19,17%	1,13%	12,78%	0,31%	3,64%
agosto-11	141.167.165,0	26.968.593,2	22,53%	19,10%	1,13%	12,72%	0,35%	4,16%
septiembre-11	140.162.906,8	26.647.535,6	22,30%	19,01%	1,12%	12,67%	0,48%	5,64%
octubre-11	139.154.380,6	26.327.911,16	22,07%	18,92%	1,12%	12,63%	0,48%	5,65%
noviembre-11	138.141.568,1	25.988.413,2	21,85%	18,81%	1,11%	12,59%	0,57%	6,58%
diciembre-11	137.124.451,1	25.713.640,1	21,62%	18,75%	1,11%	12,53%	0,32%	3,81%
enero-12	136.120.474,7	25.369.483,3	21,40%	18,64%	1,11%	12,50%	0,61%	7,09%
febrero-12	135.112.231,4	25.115.766,4	21,19%	18,59%	1,10%	12,44%	0,26%	3,09%
marzo-12	134.099.703,1	24.839.130,0	20,97%	18,52%	1,10%	12,39%	0,35%	4,17%
abril-12	133.082.871,5	24.505.817,9	20,76%	18,41%	1,09%	12,35%	0,59%	6,83%
mayo-12	132.061.718,4	24.257.625,0	20,55%	18,37%	1,09%	12,29%	0,25%	2,93%
junio-12	131.036.225,4	23.955.207,3	20,34%	18,28%	1,08%	12,25%	0,47%	5,54%
julio-12	130.063.386,4	23.679.833,1	20,13%	18,21%	1,08%	12,21%	0,41%	4,81%
agosto-12	129.086.412,9	23.395.664,5	19,93%	18,12%	1,08%	12,17%	0,45%	5,29%
septiembre-12	128.105.287,2	23.171.600,9	19,73%	18,09%	1,07%	12,11%	0,20%	2,36%
octubre-12	127.119.991,7	22.937.845,1	19,53%	18,04%	1,06%	12,05%	0,24%	2,86%
noviembre-12	126.130.508,7	22.711.275,6	19,33%	18,01%	1,06%	12,00%	0,21%	2,50%
diciembre-12	125.136.820,4	22.409.282,2	19,13%	17,91%	1,06%	11,96%	0,55%	6,36%
enero-13	124.210.241,9	22.167.015,9	18,94%	17,85%	1,05%	11,92%	0,34%	4,04%
febrero-13	123.279.725,4	21.890.813,7	18,74%	17,76%	1,05%	11,88%	0,50%	5,84%
marzo-13	122.345.254,3	21.597.147,4	18,55%	17,65%	1,05%	11,85%	0,59%	6,83%
abril-13	121.406.811,6	21.273.431,4	18,37%	17,52%	1,04%	11,83%	0,74%	8,50%
mayo-13	120.464.380,6	21.038.408,5	18,18%	17,46%	1,04%	11,78%	0,33%	3,90%
junio-13	119.517.944,2	20.781.210,7	17,99%	17,39%	1,04%	11,75%	0,44%	5,16%
julio-13	118.622.810,7	20.542.075,2	17,81%	17,32%	1,03%	11,71%	0,40%	4,75%
agosto-13	117.723.872,9	20.299.452,5	17,63%	17,24%	1,03%	11,67%	0,43%	5,00%
septiembre-13	116.821.114,5	20.062.737,1	17,45%	17,17%	1,02%	11,63%	0,40%	4,72%
octubre-13	115.914.519,5	19.865.542,3	17,27%	17,14%	1,02%	11,58%	0,21%	2,47%
noviembre-13	115.004.071,5	19.664.152,8	17,10%	17,10%	1,02%	11,53%	0,23%	2,73%

Date	Real Outstanding		1,02%		Average Single monthly mortality	CPR	Monthly Single monthly mortality	4,33%
	Prepayment vector	Remaining at the end of the month						CPR
diciembre-13	114.089.754,0	19.377.522,1	16,92%	16,98%	1,01%	11,51%	0,67%	7,73%
enero-14	113.181.065,4	19.172.408,3	16,75%	16,94%	1,01%	11,46%	0,26%	3,12%
febrero-14	112.268.514,9	18.965.305,5	16,58%	16,89%	1,01%	11,42%	0,28%	3,26%
marzo-14	111.352.086,0	18.721.830,0	16,41%	16,81%	1,00%	11,39%	0,47%	5,51%
abril-14	110.431.762,3	18.489.368,4	16,25%	16,74%	1,00%	11,35%	0,42%	4,91%
mayo-14	109.507.527,2	18.294.301,7	16,08%	16,71%	0,99%	11,30%	0,22%	2,61%

UCI 5

DEAL 265.000.000
 MEZZ. DECLINN 8,00%
 MEZZ. STOPS DECLINN 1,00%
 VIDA RESIDUAL DESDE 08/05/2014

					0,29		0,29
FECHA	PRINCIPAL AVAILABLE	SENIOR NOTES	MEZZANIE NOTES	SERIE A PRINCIPAL	VIDA MEDIA	SERIE B PRINCIPAL	VIDA MEDIA
		253.000.000,00	12.000.000,00				
08/07/1999	0,00	253.000.000,00	12.000.000,00	0,00	0,00	0,00	0,00
08/08/1999	0,00	253.000.000,00	12.000.000,00	0,00	0,00	0,00	0,00
08/09/1999	0,00	253.000.000,00	12.000.000,00	0,00	0,00	0,00	0,00
08/10/1999	0,00	253.000.000,00	12.000.000,00	0,00	0,00	0,00	0,00
08/11/1999	16.283.837,27	253.000.000,00	12.000.000,00	16.283.837,27	-86.222.918.327,00	0,00	0,00
08/12/1999	0,00	236.716.162,73	12.000.000,00	0,00	0,00	0,00	0,00
08/01/2000	0,00	236.716.162,73	12.000.000,00	0,00	0,00	0,00	0,00
08/02/2000	9.332.394,79	236.716.162,73	12.000.000,00	9.332.394,79	-48.556.450.072,33	0,00	0,00
08/03/2000	0,00	227.383.767,95	12.000.000,00	0,00	0,00	0,00	0,00
08/04/2000	0,00	227.383.767,95	12.000.000,00	0,00	0,00	0,00	0,00
08/05/2000	9.017.323,42	227.383.767,95	12.000.000,00	9.017.323,42	-46.105.574.667,75	0,00	0,00
08/06/2000	0,00	218.366.444,52	12.000.000,00	0,00	0,00	0,00	0,00
08/07/2000	0,00	218.366.444,52	12.000.000,00	0,00	0,00	0,00	0,00
08/08/2000	8.713.173,80	218.366.444,52	12.000.000,00	8.713.173,80	-43.748.845.626,48	0,00	0,00
08/09/2000	0,00	209.653.270,73	12.000.000,00	0,00	0,00	0,00	0,00
08/10/2000	0,00	209.653.270,73	12.000.000,00	0,00	0,00	0,00	0,00
08/11/2000	8.418.910,40	209.653.270,73	12.000.000,00	8.418.910,40	-41.496.809.338,01	0,00	0,00
08/12/2000	0,00	201.234.360,33	12.000.000,00	0,00	0,00	0,00	0,00
08/01/2001	0,00	201.234.360,33	12.000.000,00	0,00	0,00	0,00	0,00
08/02/2001	8.133.518,37	201.234.360,33	12.000.000,00	8.133.518,37	-39.341.828.346,55	0,00	0,00
08/03/2001	0,00	193.100.841,96	12.000.000,00	0,00	0,00	0,00	0,00
08/04/2001	0,00	193.100.841,96	12.000.000,00	0,00	0,00	0,00	0,00
08/05/2001	7.857.649,79	193.100.841,96	12.000.000,00	7.857.649,79	-37.308.121.224,70	0,00	0,00
08/06/2001	0,00	185.243.192,17	12.000.000,00	0,00	0,00	0,00	0,00
08/07/2001	0,00	185.243.192,17	12.000.000,00	0,00	0,00	0,00	0,00
08/08/2001	7.590.758,50	185.243.192,17	12.000.000,00	7.590.758,50	-35.342.571.554,61	0,00	0,00
08/09/2001	0,00	177.652.433,67	12.000.000,00	0,00	0,00	0,00	0,00
08/10/2001	0,00	177.652.433,67	12.000.000,00	0,00	0,00	0,00	0,00
08/11/2001	7.332.563,36	177.652.433,67	12.000.000,00	7.332.563,36	-33.465.819.178,34	0,00	0,00
08/12/2001	0,00	170.319.870,31	12.000.000,00	0,00	0,00	0,00	0,00
08/01/2002	0,00	170.319.870,31	12.000.000,00	0,00	0,00	0,00	0,00
08/02/2002	7.082.015,26	170.319.870,31	12.000.000,00	7.082.015,26	-31.670.772.227,84	0,00	0,00
08/03/2002	0,00	163.237.855,06	12.000.000,00	0,00	0,00	0,00	0,00
08/04/2002	0,00	163.237.855,06	12.000.000,00	0,00	0,00	0,00	0,00
08/05/2002	6.839.939,91	163.237.855,06	12.000.000,00	6.839.939,91	-29.979.456.634,00	0,00	0,00
08/06/2002	0,00	156.397.915,15	12.000.000,00	0,00	0,00	0,00	0,00
08/07/2002	0,00	156.397.915,15	12.000.000,00	0,00	0,00	0,00	0,00
08/08/2002	6.603.898,45	156.397.915,15	12.000.000,00	6.588.640,43	-28.271.856.066,58	15.258,02	-65.472.174,34
08/09/2002	0,00	149.809.274,72	11.984.741,98	0,00	0,00	0,00	0,00
08/10/2002	0,00	149.809.274,72	11.984.741,98	0,00	0,00	0,00	0,00
08/11/2002	6.376.604,29	149.809.274,72	11.984.741,98	5.904.263,23	-24.792.001.303,28	472.341,06	-1.983.360.104,26
08/12/2002	0,00	143.905.011,49	11.512.400,92	0,00	0,00	0,00	0,00
08/01/2003	0,00	143.905.011,49	11.512.400,92	0,00	0,00	0,00	0,00
08/02/2003	6.157.217,63	143.905.011,49	11.512.400,92	5.701.127,43	-23.414.530.358,97	456.090,19	-1.873.162.428,72
08/03/2003	0,00	138.203.884,06	11.056.310,72	0,00	0,00	0,00	0,00

FECHA	PRINCIPAL AVAILABLE	SENIOR NOTES	MEZZANIE NOTES	SERIE A PRINCIPAL	VIDA MEDIA	SERIE B PRINCIPAL	VIDA MEDIA
08/04/2003	0,00	138.203.884,06	11.056.310,72	0,00	0,00	0,00	0,00
08/05/2003	5.945.182,03	138.203.884,06	11.056.310,72	5.504.798,17	-22.118.279.062,97	440.383,85	-1.769.462.325,04
08/06/2003	0,00	132.699.085,88	10.615.926,87	0,00	0,00	0,00	0,00
08/07/2003	0,00	132.699.085,88	10.615.926,87	0,00	0,00	0,00	0,00
08/08/2003	5.737.757,21	132.699.085,88	10.615.926,87	5.312.738,16	-20.857.810.003,13	425.019,05	-1.668.624.800,25
08/09/2003	0,00	127.386.347,73	10.190.907,82	0,00	0,00	0,00	0,00
08/10/2003	0,00	127.386.347,73	10.190.907,82	0,00	0,00	0,00	0,00
08/11/2003	5.538.364,30	127.386.347,73	10.190.907,82	5.128.115,09	-19.661.193.268,09	410.249,21	-1.572.895.461,45
08/12/2003	0,00	122.258.232,63	9.780.658,61	0,00	0,00	0,00	0,00
08/01/2004	0,00	122.258.232,63	9.780.658,61	0,00	0,00	0,00	0,00
08/02/2004	5.345.756,99	122.258.232,63	9.780.658,61	4.949.774,99	-18.522.058.009,13	395.982,00	-1.481.764.640,73
08/03/2004	0,00	117.308.457,65	9.384.676,61	0,00	0,00	0,00	0,00
08/04/2004	0,00	117.308.457,65	9.384.676,61	0,00	0,00	0,00	0,00
08/05/2004	5.159.880,05	117.308.457,65	9.384.676,61	4.777.666,72	-17.448.038.851,04	382.213,34	-1.395.843.108,08
08/06/2004	0,00	112.530.790,93	9.002.463,27	0,00	0,00	0,00	0,00
08/07/2004	0,00	112.530.790,93	9.002.463,27	0,00	0,00	0,00	0,00
08/08/2004	4.975.706,83	112.530.790,93	9.002.463,27	4.607.135,96	-16.401.404.001,29	368.570,88	-1.312.112.320,10
08/09/2004	0,00	107.923.654,97	8.633.892,40	0,00	0,00	0,00	0,00
08/10/2004	0,00	107.923.654,97	8.633.892,40	0,00	0,00	0,00	0,00
08/11/2004	4.800.045,27	107.923.654,97	8.633.892,40	4.444.486,36	-15.413.478.711,96	355.558,91	-1.233.078.296,96
08/12/2004	0,00	103.479.168,61	8.278.333,49	0,00	0,00	0,00	0,00
08/01/2005	0,00	103.479.168,61	8.278.333,49	0,00	0,00	0,00	0,00
08/02/2005	4.629.147,03	103.479.168,61	8.278.333,49	4.286.247,25	-14.470.370.701,39	342.899,78	-1.157.629.656,11
08/03/2005	0,00	99.192.921,36	7.935.433,71	0,00	0,00	0,00	0,00
08/04/2005	0,00	99.192.921,36	7.935.433,71	0,00	0,00	0,00	0,00
08/05/2005	4.465.569,04	99.192.921,36	7.935.433,71	4.134.786,15	-13.591.042.070,66	330.782,89	-1.087.283.365,65
08/06/2005	0,00	95.058.135,21	7.604.650,82	0,00	0,00	0,00	0,00
08/07/2005	0,00	95.058.135,21	7.604.650,82	0,00	0,00	0,00	0,00
08/08/2005	4.302.581,41	95.058.135,21	7.604.650,82	3.983.871,68	-12.728.470.010,68	318.709,73	-1.018.277.600,85
08/09/2005	0,00	91.074.263,54	7.285.941,08	0,00	0,00	0,00	0,00
08/10/2005	0,00	91.074.263,54	7.285.941,08	0,00	0,00	0,00	0,00
08/11/2005	4.148.284,13	91.074.263,54	7.285.941,08	3.841.003,82	-11.918.634.864,99	307.280,31	-953.490.789,20
08/12/2005	0,00	87.233.259,71	6.978.660,78	0,00	0,00	0,00	0,00
08/01/2006	0,00	87.233.259,71	6.978.660,78	0,00	0,00	0,00	0,00
08/02/2006	3.999.724,43	87.233.259,71	6.978.660,78	3.703.448,55	-11.151.083.570,32	296.275,88	-892.086.685,63
08/03/2006	0,00	83.529.811,17	6.682.384,89	0,00	0,00	0,00	0,00
08/04/2006	0,00	83.529.811,17	6.682.384,89	0,00	0,00	0,00	0,00
08/05/2006	3.857.326,42	83.529.811,17	6.682.384,89	3.571.598,54	-10.436.210.920,09	285.727,88	-834.896.873,61
08/06/2006	0,00	79.958.212,63	6.396.657,01	0,00	0,00	0,00	0,00
08/07/2006	0,00	79.958.212,63	6.396.657,01	0,00	0,00	0,00	0,00
08/08/2006	3.717.432,83	79.958.212,63	6.396.657,01	3.442.067,44	-9.741.050.850,55	275.365,40	-779.284.068,04
08/09/2006	0,00	76.516.145,19	6.121.291,62	0,00	0,00	0,00	0,00
08/10/2006	0,00	76.516.145,19	6.121.291,62	0,00	0,00	0,00	0,00
08/11/2006	3.583.908,39	76.516.145,19	6.121.291,62	3.318.433,69	-9.085.871.445,07	265.474,70	-726.869.715,61
08/12/2006	0,00	73.197.711,50	5.855.816,92	0,00	0,00	0,00	0,00
08/01/2007	0,00	73.197.711,50	5.855.816,92	0,00	0,00	0,00	0,00
08/02/2007	3.453.112,24	73.197.711,50	5.855.816,92	3.197.326,14	-8.460.124.976,28	255.786,09	-676.809.998,10
08/03/2007	0,00	70.000.385,36	5.600.030,83	0,00	0,00	0,00	0,00
08/04/2007	0,00	70.000.385,36	5.600.030,83	0,00	0,00	0,00	0,00
08/05/2007	3.328.368,66	70.000.385,36	5.600.030,83	3.081.822,83	-7.880.220.988,08	246.545,83	-630.417.679,05
08/06/2007	0,00	66.918.562,52	5.353.485,00	0,00	0,00	0,00	0,00
08/07/2007	0,00	66.918.562,52	5.353.485,00	0,00	0,00	0,00	0,00
08/08/2007	3.202.350,78	66.918.562,52	5.353.485,00	2.965.139,61	-7.309.069.138,52	237.211,17	-584.725.531,08
08/09/2007	0,00	63.953.422,91	5.116.273,83	0,00	0,00	0,00	0,00
08/10/2007	0,00	63.953.422,91	5.116.273,83	0,00	0,00	0,00	0,00
08/11/2007	3.084.186,46	63.953.422,91	5.116.273,83	2.855.728,21	-6.776.643.032,83	228.458,26	-542.131.442,63
08/12/2007	0,00	61.097.694,71	4.887.815,58	0,00	0,00	0,00	0,00
08/01/2008	0,00	61.097.694,71	4.887.815,58	0,00	0,00	0,00	0,00

FECHA	PRINCIPAL AVAILABLE	SENIOR NOTES	MEZZANIE NOTES	SERIE A PRINCIPAL	VIDA MEDIA	SERIE B PRINCIPAL	VIDA MEDIA
08/02/2008	2.960.689,66	61.097.694,71	4.887.815,58	2.741.379,32	-6.253.086.223,63	219.310,35	-500.246.897,89
08/03/2008	0,00	58.356.315,39	4.668.505,23	0,00	0,00	0,00	0,00
08/04/2008	0,00	58.356.315,39	4.668.505,23	0,00	0,00	0,00	0,00
08/05/2008	2.847.965,29	58.356.315,39	4.668.505,23	2.637.004,90	-5.777.677.738,77	210.960,39	-462.214.219,10
08/06/2008	0,00	55.719.310,49	4.457.544,84	0,00	0,00	0,00	0,00
08/07/2008	0,00	55.719.310,49	4.457.544,84	0,00	0,00	0,00	0,00
08/08/2008	2.737.034,75	55.719.310,49	4.457.544,84	2.534.291,44	-5.319.477.730,51	202.743,32	-425.558.218,44
08/09/2008	0,00	53.185.019,05	4.254.801,52	0,00	0,00	0,00	0,00
08/10/2008	0,00	53.185.019,05	4.254.801,52	0,00	0,00	0,00	0,00
08/11/2008	2.634.104,86	53.185.019,05	4.254.801,52	2.438.985,98	-4.895.044.869,76	195.118,88	-391.603.589,58
08/12/2008	0,00	50.746.033,07	4.059.682,65	0,00	0,00	0,00	0,00
08/01/2009	0,00	50.746.033,07	4.059.682,65	0,00	0,00	0,00	0,00
08/02/2009	2.534.075,36	50.746.033,07	4.059.682,65	2.346.366,08	-4.493.291.037,74	187.709,29	-359.463.283,02
08/03/2009	0,00	48.399.666,99	3.871.973,36	0,00	0,00	0,00	0,00
08/04/2009	0,00	48.399.666,99	3.871.973,36	0,00	0,00	0,00	0,00
08/05/2009	2.439.772,66	48.399.666,99	3.871.973,36	2.259.048,76	-4.125.023.041,14	180.723,90	-330.001.843,29
08/06/2009	0,00	46.140.618,23	3.691.249,46	0,00	0,00	0,00	0,00
08/07/2009	0,00	46.140.618,23	3.691.249,46	0,00	0,00	0,00	0,00
08/08/2009	2.343.824,14	46.140.618,23	3.691.249,46	2.170.207,54	-3.763.139.873,88	173.616,60	-301.051.189,91
08/09/2009	0,00	43.970.410,69	3.517.632,85	0,00	0,00	0,00	0,00
08/10/2009	0,00	43.970.410,69	3.517.632,85	0,00	0,00	0,00	0,00
08/11/2009	2.254.771,88	43.970.410,69	3.517.632,85	2.087.751,74	-3.428.088.352,16	167.020,14	-274.247.068,17
08/12/2009	0,00	41.882.658,95	3.350.612,72	0,00	0,00	0,00	0,00
08/01/2010	0,00	41.882.658,95	3.350.612,72	0,00	0,00	0,00	0,00
08/02/2010	2.164.624,71	41.882.658,95	3.350.612,72	2.004.282,14	-3.106.637.311,57	160.342,57	-248.530.984,93
08/03/2010	0,00	39.878.376,81	3.190.270,15	0,00	0,00	0,00	0,00
08/04/2010	0,00	39.878.376,81	3.190.270,15	0,00	0,00	0,00	0,00
08/05/2010	2.081.451,53	39.878.376,81	3.190.270,15	1.927.269,93	-2.815.741.373,58	154.181,59	-225.259.309,89
08/06/2010	0,00	37.951.106,88	3.036.088,55	0,00	0,00	0,00	0,00
08/07/2010	0,00	37.951.106,88	3.036.088,55	0,00	0,00	0,00	0,00
08/08/2010	1.992.307,91	37.951.106,88	3.036.088,55	1.606.219,36	-2.198.914.303,52	386.088,55	-528.555.225,38
08/09/2010	0,00	36.344.887,52	2.650.000,00	0,00	0,00	0,00	0,00
08/10/2010	0,00	36.344.887,52	2.650.000,00	0,00	0,00	0,00	0,00
08/11/2010	1.912.709,34	36.344.887,52	2.650.000,00	1.912.709,34	-2.442.529.824,60	0,00	0,00
08/12/2010	0,00	34.432.178,18	2.650.000,00	0,00	0,00	0,00	0,00
08/01/2011	0,00	34.432.178,18	2.650.000,00	0,00	0,00	0,00	0,00
08/02/2011	1.834.031,38	34.432.178,18	2.650.000,00	1.834.031,38	-2.173.327.188,81	0,00	0,00
08/03/2011	0,00	32.598.146,80	2.650.000,00	0,00	0,00	0,00	0,00
08/04/2011	0,00	32.598.146,80	2.650.000,00	0,00	0,00	0,00	0,00
08/05/2011	1.762.151,71	32.598.146,80	2.650.000,00	1.762.151,71	-1.931.318.269,36	0,00	0,00
08/06/2011	0,00	30.835.995,09	2.650.000,00	0,00	0,00	0,00	0,00
08/07/2011	0,00	30.835.995,09	2.650.000,00	0,00	0,00	0,00	0,00
08/08/2011	1.687.479,46	30.835.995,09	2.650.000,00	1.687.479,46	-1.694.229.380,40	0,00	0,00
08/09/2011	0,00	29.148.515,63	2.650.000,00	0,00	0,00	0,00	0,00
08/10/2011	0,00	29.148.515,63	2.650.000,00	0,00	0,00	0,00	0,00
08/11/2011	1.620.109,47	29.148.515,63	2.650.000,00	1.620.109,47	-1.477.539.840,78	0,00	0,00
08/12/2011	0,00	27.528.406,16	2.650.000,00	0,00	0,00	0,00	0,00
08/01/2012	0,00	27.528.406,16	2.650.000,00	0,00	0,00	0,00	0,00
08/02/2012	1.552.097,62	27.528.406,16	2.650.000,00	1.552.097,62	-1.272.720.051,83	0,00	0,00
08/03/2012	0,00	25.976.308,53	2.650.000,00	0,00	0,00	0,00	0,00
08/04/2012	0,00	25.976.308,53	2.650.000,00	0,00	0,00	0,00	0,00
08/05/2012	1.490.273,65	25.976.308,53	2.650.000,00	1.490.273,65	-1.087.899.767,86	0,00	0,00
08/06/2012	0,00	24.486.034,88	2.650.000,00	0,00	0,00	0,00	0,00
08/07/2012	0,00	24.486.034,88	2.650.000,00	0,00	0,00	0,00	0,00
08/08/2012	1.411.428,36	24.486.034,88	2.650.000,00	1.411.428,36	-900.491.292,85	0,00	0,00
08/09/2012	0,00	23.074.606,52	2.650.000,00	0,00	0,00	0,00	0,00
08/10/2012	0,00	23.074.606,52	2.650.000,00	0,00	0,00	0,00	0,00
08/11/2012	1.347.221,39	23.074.606,52	2.650.000,00	1.347.221,39	-735.582.876,31	0,00	0,00

FECHA	PRINCIPAL AVAILABLE	SENIOR NOTES	MEZZANIE NOTES	SERIE A PRINCIPAL	VIDA MEDIA	SERIE B PRINCIPAL	VIDA MEDIA
08/12/2012	0,00	21.727.385,13	2.650.000,00	0,00	0,00	0,00	0,00
08/01/2013	0,00	21.727.385,13	2.650.000,00	0,00	0,00	0,00	0,00
08/02/2013	1.269.649,34	21.727.385,13	2.650.000,00	1.269.649,34	-576.420.800,01	0,00	0,00
11/03/2013	0,00	20.457.735,79	2.650.000,00	0,00	0,00	0,00	0,00
11/04/2013	0,00	20.457.735,79	2.650.000,00	0,00	0,00	0,00	0,00
12/05/2013	1.208.792,95	20.457.735,79	2.650.000,00	1.208.792,95	-436.374.254,07	0,00	0,00
12/06/2013	0,00	19.248.942,85	2.650.000,00	0,00	0,00	0,00	0,00
13/07/2013	0,00	19.248.942,85	2.650.000,00	0,00	0,00	0,00	0,00
13/08/2013	1.143.700,78	19.248.942,85	2.650.000,00	1.143.700,78	-306.511.809,83	0,00	0,00
13/09/2013	0,00	18.105.242,06	2.650.000,00	0,00	0,00	0,00	0,00
14/10/2013	0,00	18.105.242,06	2.650.000,00	0,00	0,00	0,00	0,00
14/11/2013	1.091.089,22	18.105.242,06	2.650.000,00	1.091.089,22	-190.940.614,04	0,00	0,00
15/12/2013	0,00	17.014.152,84	2.650.000,00	0,00	0,00	0,00	0,00
15/01/2014	0,00	17.014.152,84	2.650.000,00	0,00	0,00	0,00	0,00
15/02/2014	1.046.764,13	17.014.152,84	2.650.000,00	1.046.764,13	-85.834.658,83	0,00	0,00
18/03/2014	0,00	15.967.388,71	2.650.000,00	0,00	0,00	0,00	0,00
18/04/2014	0,00	15.967.388,71	2.650.000,00	0,00	0,00	0,00	0,00
19/05/2014	1.005.597,65	15.967.388,71	2.650.000,00	1.005.597,65	11.061.574,11	0,00	0,00
19/06/2014	0,00	14.961.791,06	2.650.000,00	0,00	0,00	0,00	0,00
20/07/2014	0,00	14.961.791,06	2.650.000,00	0,00	0,00	0,00	0,00
20/08/2014	17.611.791,06	14.961.791,06	2.650.000,00	14.961.791,06	1.556.026.270,36	2.650.000,00	275.600.000,00