



F.T.H.: BANESTO 3

DESIREE PEREZ MONTORO

ANALYST

SANTANDER DE TITULIZACION, S.G.F.T, S.A.

CIUDAD GRUPO SANTANDER

28660 BOADILLA DEL MONTE

desperez@gruposantander.com

Tel: 912893278



NAME OF THE FUND:

F.T.H.: BANESTO 3

INFORMATION AT:

QUARTER/SEMESTER:

June 18, 2010

-

September 20, 2010

YEAR:

2010

Acting on behalf of Santander de Titulización S.G.F.T., S.A. as General Manager:

Signature:

IGNACIO ORTEGA GAVARA - GENERAL MANAGER

I. DATA OF THE FUND

Constitution Date	July 16, 2001	Paying Agent	BANESTO	
Disbursement Date	July 19, 2001	Negotiation Market	AIAF	
Final Date of Redemption	March 18, 2031	Ratings Agencies	MOODY'S ESPAÑA	
Management Company	SANTANDER DE TITULIZACION, S.G.F.T, S.A.	Rating	Initial	Current
Credit Rights's Seller	BANESTO	CLASS A	Aaa	Aaa
		CLASS B	A2	A2

II. SECURITIES ISSUED CHARGED TO THE FUND: SECURITISATION BONDS

CLASS PRIORITY ISIN CODE	NUM BONDS	NOMINAL			
			Initial	Current	%Act/In
CLASS A ES0338398003	5.273	Nominal per Bond	100.000,00	17.829,85	
		Total Nominal	527.300.000,00	94.016.799,05	17,83 %
CLASS B ES0338398011	177	Nominal per Bond	100.000,00	53.116,84	
		Total Nominal	17.700.000,00	9.401.680,68	53,12 %

REDEMPTION AND INTEREST OF THE BONDS					
Current			Next		
Payment Date of the Current Period September 20, 2010			Next Payment Date December 20, 2010		
	Redemption of the Bonds	Gross Interest	Interest Rate	Gross Interest Next Coupon	Net Interest Next Coupon
CLASS A	642,90 €	46,16 €	1,1244 %	49,98 €	40,48 €
CLASS B	1.915,24 €	190,68 €	1,4995 %	198,58 €	160,85 €
Accrued amortisation due not payed	0,00 €				
Scheduled Amortisation	NO				



III. ASSET PURCHASED BY THE FUND: CREDIT RIGHTS

CREDIT RIGHTS	ISSUE DATE	CURRENT DATE
Numbre of CR's	8.799	2.923
CR's Outstanding to be amortised	545.000.751,44	103.418.481,76
CR's Outstanding per Loan to be amortised	61.938,94	35.380,93
Interest Rate	5,73 %	2,43 %

PREPAYMENT RATE	CURRENT SITUATION
Monthly Single Rate	5,36 %
Average Monthly Single Rate	7,99 %
Constant Prepayment Rate from Constitution	12,22 %

CURRENT DELINQUENCY	Up to 1 month	From 1 to 6 months	Greater than 6 months
Debt Due (Principal + Interest)	25.960,54	16.613,56	3.181,70
Debt to be amortised	0,00	0,00	103.382.438,90
Total Debt	25.960,54	16.613,56	103.385.620,60

F.T.H.: BANESTO 3

QUARTERLY BONDS PAYOUT REPORT

September 20, 2010

BONDS. PRINCIPAL	
Previous Balance	107.147.488,91 €
Principal Amortised	3.729.009,18 €
Outstanding Balance	103.418.479,73 €
% of Initial Balance	18,98 %
Principal accrued and unpaid	0,00 €

DATA	
Determination Date	September 13, 2010
Payment Date	September 20, 2010
Last Payment Date	June 18, 2010
Number of Days (Act/360)	94
Reference Interest Rate (%)	0,879 %
Next Payment Date	December 20, 2010

INTEREST PAID	
CLASS A	243.401,68 €
CLASS B	33.750,36 €
Interest accrued and unpaid	0,00 €

RESIDUAL LIFE (YEARS)		
	INITIAL	September 20, 2010
CLASS A	10,01	2,00
CLASS B	17,25	2,00

F.T.H.: BANESTO 3

QUARTERLY COLLATERAL REPORT

September 20, 2010

PRINCIPAL	
Previous Balance	107.147.466,16 €
Principal Amortised	3.728.984,40 €
Outstanding Balance	103.418.481,76 €
Number of Credit Rights	2.923
LTV	40,68%

INTEREST	
Interest received during relevant period	647.425,93 €
Interest accrued during relevant period	645.860,30 €

PRINCIPAL BALANCE IN ARREARS					
	UP to 30 DAYS	30 to 60 DAYS	60 to 90 DAYS	90 to 180 DAYS	< 180 DAYS
Principal Balance in Arrears	21.027,57 €	7.346,81 €	3.590,19 €	2.021,25 €	2.057,04 €
Interest accrued on Credit Rights in Arrears	4.932,97 €	2.035,11 €	1.068,60 €	551,60 €	1.124,66 €
Outstanding Balance	2.541.120,29 €	659.022,34 €	347.758,99 €	301.997,47 €	75.369,98 €
Number of Credit Rights	54	12	6	7	3
% of Outstanding Balance	2,46 %	0,64 %	0,34 %	0,29 %	0,07%

F.T.H.: BANESTO 3

QUARTERLY COLLATERAL REPORT

September 20, 2010

CONTENTIOUS / JUDICIAL	
Last balance	51.198,59 €
Difference in Actual Period	-269,95 €
Current balance	50.928,64 €
Contentious CR's number	3

TRANSITORY PROPERTIES	
Last balance	0,00 €
Difference in Actual Period	0,00 €
Current balance	0,00 €
Transitory properties CR's number	0

NET LOSSES	
Last balance	0,00 €
Difference in Actual Period	0,00 €
Current balance	0,00 €

F.T.H.: BANESTO 3

QUARTERLY REPORT - ALLOCATION OF CASH

September 20, 2010

TOTAL CASH RECEIVED END OF PERIOD	4.402.573,89 €
CASH RECEIVED - PRINCIPAL	
Amortisation of Credit Rights	3.668.972,74 €
CASH RECEIVED - INTEREST	
Interest received from Credit Rights	647.425,93 €
Interest received under GIC	26.163,56 €
CONTENTIOUS	269,95 €
INCOMES/EXPENSES OF TRANSTORY PROPERTIES	0,00 €
RESERVE FUNDS	0,00 €
OTHERS	59.741,71 €

TREASURY ACCOUNT STATEMENT	2.913.777,22 €
PRINCIPAL RESERVE FUND	
Previous Balance	1.339.343,33 €
Period utilization	46.612,31 €
Outstanding Balance	1.292.731,02 €
PRINCIPAL RESERVE FUND	
Previous Balance	1.630.368,67 €
Period utilization	9.322,47 €
Outstanding Balance	1.621.046,20 €
WITHHOLDING TAXES	0,00 €
ISSUE EXPENSES WITHHELD	0,00 €
OTHERS	0,00 €

TOTAL CASH PAID END OF PERIOD	4.402.573,89 €
Ordinary Expenses	12.310,36 €
SGFT Fee	17.036,55 €
Swap Collection A	470.351,83 €
Swap Payment A	-243.405,48 €
Interest paid to Bondholders Class A	243.401,68 €
Principal Withholding Class A	3.390.011,70 €
Principal Withholding Class B	338.997,48 €
Swap collection B	47.035,17 €
Swap Payment B	-33.750,14 €
Interest paid to Bondholders Class B	33.750,36 €
Interest Subordinated Loan A	14.539,88 €
Interest Subordinated Loan B	0,00 €
Redemption Subordinated Loan A	55.934,77 €
Redemption Subordinated Loan B	0,00 €
Fixed Fee	6.000,00 €
Variable Fee	106.294,60 €
Utilization Reserve Fund Principal and Secondary	-55.934,77 €

F.T.H.: BANESTO 3

CREDIT ENHACEMENT AND SUBORDINATED LOAN

September 20, 2010

CREDIT ENHACEMENT		
CONCEPTS	INITIAL	September 20, 2010
SUBORDINATED ISSUE	3,25 %	9,09 %
PRINCIPAL RESERVE FUND	6.812.500,00 € (1,25 %)	1.292.731,02 € (1,25 %)
SECONDARY RESERVE FUND	2.725.000,00 € (0,50 %)	1.621.046,20 € (1,57 %)
ADDITIONAL MARGIN	0,65%	0,65%

SUBORDINATED LOANS		
CONCEPTS	INITIAL	September 20, 2010
SUBORDINATED LOAN A		
Total Outstanding Subordinated Loan	10.655.260,00 €	2.915.541,29 €
Interest Rate	5,08%	1,78%
SUBORDINATED LOAN B		
Total Outstanding Subordinated Loan	1.351.900,00 €	-
Interest Rate	5,08%	-

F.T.H.: BANESTO 3

TRIGGERS OF THE MODEL

September 20, 2010

BOND's TRIGGERS	
1. IF 1.A) IS HIGHER THAN 1.B) THERE IS NO REDEMPTION OF CLASS B:	
1.A) MP'S IN ARREARS OVER 90 DAYS	377.367,45 €
1.B) 7% MP'S OUTSTANDING BALANCE	7.239.293,72 €

THIS LEVEL HAS NOT BEEN REACHED, SO THE REDEMPTION OF CLASS B HAS TAKEN PLACE.

F.T.H.: BANESTO 3

DEFINITIONS

September 20, 2010

DETERMINATION DATE Means the date in which the Gestora will carry out the necessary calculations, on behalf of the Fund, for the distribution of the available funds at this date, according with the Order of Priority of Payments.

All the information regarding the Assets (Outstanding Balance of the Credit Rights, arrears' tables, transitory properties, stratification tables, etc.) are referred to this mentioned date.

NET LOSSES Those loans which the Originator considers that will not recover (net of recoveries).

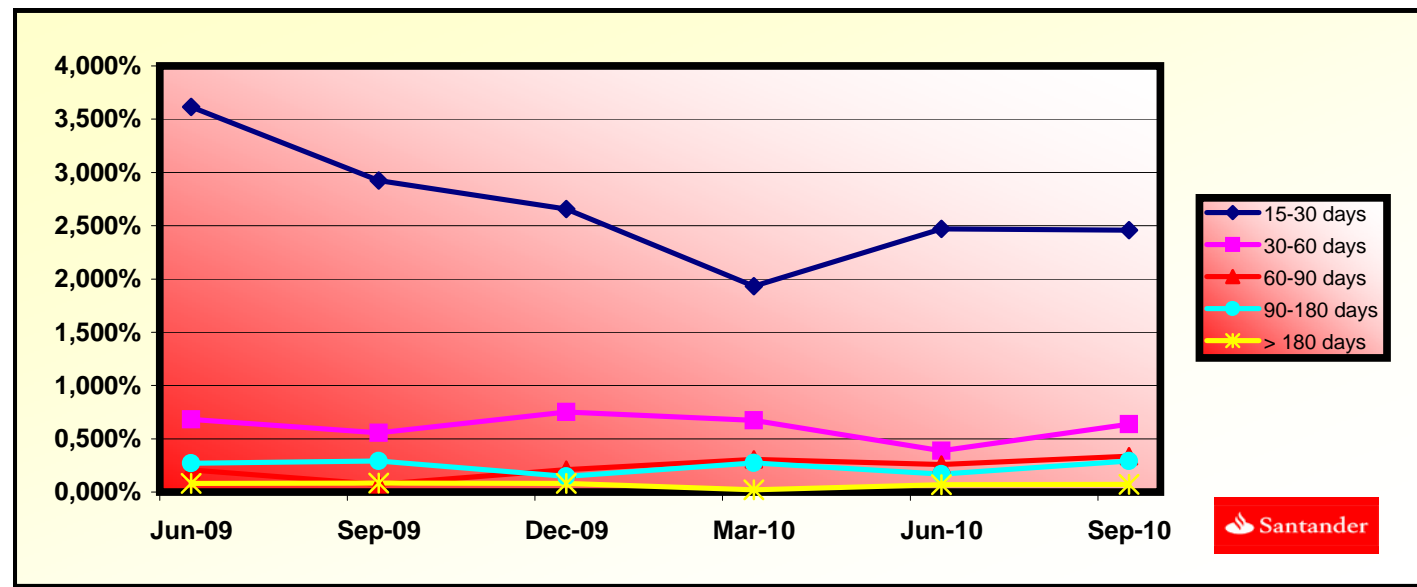
TRANSITORY PROPERTIES Those assets in the balance of the Fund as a consequence of a judicial or non-judicial process.

CONTENTIOUS / JUDICIAL Loans in which the Originator will take legal actions. This amount is included in the bucket > 180 days in arrears.

**FONDO DE TITULIZACIÓN HIPOTECARIA
BANESTO 3**

**HISTORICAL ARRERS REPORT
SEPTEMBER 20TH, 2010**

Data	Jun-09	Sep-09	Dec-09	Mar-10	Jun-10	Sep-10
15-30 days	3,614%	2,924%	2,657%	1,933%	2,472%	2,457%
30-60 days	0,681%	0,557%	0,750%	0,674%	0,386%	0,637%
60-90 days	0,209%	0,072%	0,210%	0,307%	0,258%	0,336%
90-180 days	0,271%	0,293%	0,147%	0,275%	0,169%	0,292%
> 180 days	0,080%	0,083%	0,080%	0,022%	0,071%	0,073%



**FONDO DE TITULIZACIÓN HIPOTECARIA
BANESTO 3**

**LTV
SEPTEMBER 20TH, 2010**

LTV (%)	OUTS. BALANC	% OUTSTANDING	LOANS	% LOANS
0,00 - 9,99	2.329,65	2,25%	298,00	10,19%
10,00 - 19,99	9.383,94	9,06%	480,00	16,42%
20,00 - 29,99	15.923,30	14,77%	551,00	18,85%
30,00 - 39,99	17.874,43	17,27%	474,00	16,21%
40,00 - 49,99	26.794,84	25,89%	558,00	19,08%
50,00 - 59,99	24.177,17	23,36%	439,00	15,01%
60,00 - 69,99	7.585,06	7,33%	122,00	4,17%
70,00 - 79,99	39,85	0,03%	1,00	0,03%
>80	0,00	0,00%	0,00	0,00%

PREPAYMENTS -BANESTO 3

September, 18th 2010

DATE	OUTSTANDING BEFORE PREPAYMENT	REAL OUTSTANDING	PREPAYMENT VECTOR	REMAINING AT THE END OF THE MONTH	AVERAGE SINGLE MONTHLY MORTALITY	CPR	MONTHLY SINGLE MONTHLY MORTALITY	CPR	OUTSTANDING AFTER PREPAYMENT
			1,08%			12,45%		7,99%	
	545.000,75		100,00%	100,00%					545.000,000000
ago-01	543.527,97	539.890,26	98,92%	99,33%	0,67%	7,74%	0,67%	7,74%	537.658,79
sep-01	542.048,16	536.425,27	97,85%	98,96%	0,52%	6,06%	0,37%	4,36%	530.404,95
oct-01	540.561,28	529.205,98	96,80%	97,90%	0,71%	8,14%	1,07%	12,16%	523.238,24
nov-01	539.067,30	508.856,10	95,75%	94,40%	1,43%	15,89%	3,58%	35,42%	516.157,67
dic-01	537.566,18	504.903,38	94,72%	93,92%	1,25%	13,97%	0,50%	5,83%	509.162,24
ene-02	536.058,09	497.975,70	93,69%	92,90%	1,22%	13,70%	1,09%	12,37%	502.251,17
feb-02	534.542,80	492.605,76	92,68%	92,15%	1,16%	13,07%	0,80%	9,17%	495.423,30
mar-02	533.020,28	487.539,03	91,68%	91,47%	1,11%	12,52%	0,75%	8,59%	488.677,70
abr-02	531.490,48	482.325,78	90,69%	90,75%	1,07%	12,14%	0,78%	9,02%	482.013,43
may-02	529.953,38	472.096,04	89,71%	89,08%	1,15%	12,95%	1,84%	19,95%	475.429,54
jun-02	528.408,94	467.430,92	88,74%	88,46%	1,11%	12,52%	0,70%	8,07%	468.925,12
jul-02	526.857,13	462.405,44	87,78%	87,77%	1,08%	12,23%	0,78%	9,01%	462.499,27
ago-02	525.297,91	456.827,61	86,84%	86,97%	1,07%	12,10%	0,91%	10,42%	456.151,08
sep-02	523.731,24	453.636,50	85,90%	86,62%	1,02%	11,59%	0,40%	4,71%	449.879,67
oct-02	522.157,09	449.551,51	84,97%	86,10%	0,99%	11,29%	0,60%	6,99%	443.684,15
nov-02	520.575,42	444.561,67	84,05%	85,40%	0,98%	11,16%	0,81%	9,29%	437.563,66
dic-02	518.986,20	439.227,31	83,15%	84,63%	0,98%	11,11%	0,90%	10,25%	431.517,33
ene-03	517.390,11	433.249,55	82,25%	83,74%	0,98%	11,16%	1,06%	11,97%	425.544,92
feb-03	515.786,40	428.692,19	81,36%	83,11%	0,97%	11,02%	0,74%	8,57%	419.644,97
mar-03	514.175,03	423.303,14	80,48%	82,33%	0,97%	11,01%	0,95%	10,80%	413.816,65
abr-03	512.555,97	416.694,08	79,61%	81,30%	0,98%	11,16%	1,25%	14,01%	408.059,16
may-03	510.929,17	412.683,71	78,75%	80,77%	0,97%	11,00%	0,65%	7,49%	402.371,66
jun-03	509.294,61	407.499,71	77,90%	80,01%	0,96%	10,98%	0,94%	10,71%	396.753,36
jul-03	507.654,69	402.586,78	77,06%	79,30%	0,96%	10,95%	0,89%	10,13%	391.205,35
ago-03	506.006,94	397.341,20	76,23%	78,52%	0,96%	10,96%	0,98%	11,16%	385.724,92
sep-03	504.351,31	392.372,47	75,41%	77,80%	0,96%	10,94%	0,93%	10,57%	380.311,30
oct-03	502.687,79	387.970,25	74,59%	77,18%	0,95%	10,87%	0,79%	9,13%	374.963,73
nov-03	501.016,31	382.648,49	73,79%	76,37%	0,96%	10,91%	1,04%	11,82%	369.681,44
dic-03	499.336,86	377.345,85	72,99%	75,57%	0,96%	10,94%	1,05%	11,94%	364.463,68
ene-04	497.651,76	371.070,26	72,20%	74,56%	0,97%	11,08%	1,33%	14,84%	359.311,42
feb-04	495.958,61	366.124,10	71,42%	73,82%	0,97%	11,09%	1,00%	11,32%	354.222,19
mar-04	494.257,38	358.230,57	70,65%	72,48%	1,00%	11,37%	1,82%	19,77%	349.195,25
abr-04	492.548,02	352.050,49	69,89%	71,48%	1,01%	11,50%	1,38%	15,40%	344.229,91
may-04	490.830,50	346.309,50	69,13%	70,56%	1,02%	11,58%	1,29%	14,39%	339.325,43

PREPAYMENTS -BANESTO 3

September, 18th 2010

DATE	OUTSTANDING BEFORE PREPAYMENT	REAL OUTSTANDING	PREPAYMENT VECTOR	REMAINING AT THE END OF THE MONTH	AVERAGE SINGLE MONTHLY MORTALITY	CPR	MONTHLY SINGLE MONTHLY MORTALITY	CPR	OUTSTANDING AFTER PREPAYMENT
			1,08%			12,45%		7,99%	
	545.000,75		100,00%	100,00%					545.000,000000
jun-04	489.104,78	339.879,89	68,39%	69,49%	1,03%	11,73%	1,51%	16,69%	334.481,14
jul-04	487.378,07	333.538,37	67,65%	68,44%	1,05%	11,88%	1,52%	16,77%	329.701,22
ago-04	485.643,12	328.314,83	66,92%	67,60%	1,05%	11,92%	1,21%	13,64%	324.980,02
sep-04	483.899,88	325.180,03	66,19%	67,20%	1,04%	11,80%	0,60%	6,94%	320.316,85
oct-04	482.148,31	318.392,25	65,48%	66,04%	1,06%	11,99%	1,73%	18,91%	315.711,04
nov-04	480.388,39	313.447,63	64,77%	65,25%	1,06%	12,02%	1,19%	13,41%	311.161,94
dic-04	478.620,06	308.765,00	64,07%	64,51%	1,06%	12,04%	1,13%	12,75%	306.668,88
ene-05	476.851,11	301.648,49	63,38%	63,26%	1,08%	12,26%	1,94%	20,97%	302.236,19
feb-05	475.073,72	296.110,32	62,70%	62,33%	1,09%	12,36%	1,47%	16,27%	297.858,17
mar-05	473.287,83	292.384,76	62,02%	61,78%	1,09%	12,31%	0,89%	10,12%	293.534,20
abr-05	471.493,43	287.710,34	61,35%	61,02%	1,09%	12,34%	1,22%	13,74%	289.263,64
may-05	469.690,45	283.326,47	60,69%	60,32%	1,09%	12,35%	1,15%	12,91%	285.045,89
jun-05	467.878,86	277.846,23	60,03%	59,38%	1,10%	12,46%	1,55%	17,14%	280.880,34
jul-05	466.074,04	273.281,57	59,38%	58,63%	1,11%	12,49%	1,26%	14,14%	276.775,52
ago-05	464.260,61	269.162,22	58,74%	57,98%	1,11%	12,50%	1,12%	12,67%	272.721,54
sep-05	462.438,51	265.737,25	58,11%	57,46%	1,10%	12,45%	0,88%	10,10%	268.717,81
oct-05	460.607,71	261.586,56	57,48%	56,79%	1,10%	12,46%	1,17%	13,18%	264.763,74
nov-05	458.768,17	254.744,37	56,86%	55,53%	1,12%	12,69%	2,23%	23,66%	260.858,77
dic-05	456.919,85	249.916,94	56,25%	54,70%	1,13%	12,77%	1,50%	16,57%	257.002,31
ene-06	455.081,63	243.334,40	55,64%	53,47%	1,15%	12,99%	2,24%	23,81%	253.204,35
feb-06	453.234,63	237.882,89	55,04%	52,49%	1,17%	13,12%	1,84%	20,00%	249.453,61
mar-06	451.378,82	233.269,53	54,44%	51,68%	1,17%	13,19%	1,54%	16,95%	245.749,55
abr-06	449.514,14	228.659,73	53,86%	50,87%	1,18%	13,26%	1,57%	17,29%	242.091,62
may-06	447.640,55	215.149,19	53,27%	48,06%	1,26%	14,07%	5,51%	49,37%	238.479,29
jun-06	445.758,03	211.654,12	52,70%	47,48%	1,25%	14,06%	1,21%	13,58%	234.912,04
jul-06	443.877,35	208.876,51	52,13%	47,06%	1,25%	13,99%	0,89%	10,22%	231.394,98
ago-06	441.987,68	205.480,06	51,57%	46,49%	1,25%	13,99%	1,21%	13,54%	227.921,85
sep-06	440.089,00	203.064,54	51,01%	46,14%	1,24%	13,90%	0,75%	8,63%	224.492,15
oct-06	438.181,25	199.830,38	50,46%	45,60%	1,24%	13,89%	1,16%	13,11%	221.105,37
nov-06	436.264,39	196.223,60	49,91%	44,98%	1,24%	13,91%	1,37%	15,29%	217.761,00
dic-06	434.338,38	192.840,14	49,38%	44,40%	1,24%	13,92%	1,29%	14,41%	214.458,57
ene-07	432.415,18	188.995,63	48,84%	43,71%	1,25%	13,97%	1,56%	17,17%	211.203,43
feb-07	430.482,80	185.490,72	48,32%	43,09%	1,25%	14,00%	1,41%	15,71%	207.989,16
mar-07	428.541,19	182.634,62	47,79%	42,62%	1,25%	13,97%	1,09%	12,36%	204.815,26
abr-07	426.590,31	180.123,60	47,28%	42,22%	1,24%	13,92%	0,92%	10,54%	201.681,27
may-07	424.630,11	177.873,88	46,77%	41,89%	1,24%	13,86%	0,79%	9,11%	198.586,73
jun-07	422.660,55	174.890,05	46,26%	41,38%	1,24%	13,86%	1,22%	13,69%	195.531,17
jul-07	420.697,00	172.177,92	45,76%	40,93%	1,23%	13,83%	1,09%	12,34%	192.521,20
ago-07	418.724,08	168.822,05	45,27%	40,32%	1,24%	13,87%	1,49%	16,46%	189.549,19
sep-07	416.741,73	166.931,26	44,78%	40,06%	1,23%	13,79%	0,65%	7,52%	186.614,69
oct-07	414.749,92	164.555,51	44,30%	39,68%	1,23%	13,75%	0,95%	10,82%	183.717,28
nov-07	412.748,60	162.322,92	43,82%	39,33%	1,22%	13,70%	0,88%	10,05%	180.856,51
dic-07	410.737,72	160.233,58	43,34%	39,01%	1,22%	13,64%	0,80%	9,23%	178.031,96
ene-08	408.732,94	157.397,63	42,88%	38,51%	1,22%	13,65%	1,29%	14,41%	175.249,94

PREPAYMENTS -BANESTO 3

September, 18th 2010

DATE	OUTSTANDING BEFORE PREPAYMENT	REAL OUTSTANDING	PREPAYMENT VECTOR	REMAINING AT THE END OF THE MONTH	AVERAGE SINGLE MONTHLY MORTALITY	CPR	MONTHLY SINGLE MONTHLY MORTALITY	CPR	OUTSTANDING AFTER PREPAYMENT
			1,08%			12,45%		7,99%	
	545.000,75		100,00%	100,00%					545.000,000000
feb-08	406.718,59	155.495,62	42,41%	38,23%	1,21%	13,59%	0,72%	8,30%	172.503,18
mar-08	404.694,62	153.316,91	41,96%	37,88%	1,21%	13,55%	0,91%	10,37%	169.791,27
abr-08	402.660,99	151.340,98	41,50%	37,59%	1,20%	13,50%	0,79%	9,08%	167.113,81
may-08	400.617,65	149.611,77	41,05%	37,35%	1,19%	13,42%	0,64%	7,40%	164.470,38
jun-08	398.564,55	147.407,19	40,61%	36,98%	1,19%	13,39%	0,97%	11,00%	161.860,60
jul-08	396.525,06	145.308,27	40,17%	36,65%	1,19%	13,36%	0,92%	10,46%	159.293,47
ago-08	394.475,83	143.409,80	39,74%	36,35%	1,18%	13,31%	0,79%	9,12%	156.759,03
sep-08	392.416,82	141.865,64	39,31%	36,15%	1,18%	13,24%	0,56%	6,49%	154.256,91
oct-08	390.347,98	140.074,65	38,88%	35,88%	1,17%	13,18%	0,74%	8,52%	151.786,73
nov-08	388.269,26	138.000,87	38,47%	35,54%	1,17%	13,16%	0,95%	10,86%	149.348,11
dic-08	386.180,61	136.573,15	38,05%	35,37%	1,16%	13,08%	0,50%	5,83%	146.940,68
ene-09	384.112,62	132.614,45	37,64%	34,52%	1,17%	13,22%	2,38%	25,06%	144.575,60
feb-09	382.034,76	132.390,94	37,23%	34,65%	1,16%	13,04%	0,37%	4,59%	142.240,79
mar-09	379.946,98	131.178,61	36,83%	34,53%	1,15%	12,95%	0,37%	4,37%	139.935,89
abr-09	377.849,22	131.093,99	36,43%	34,69%	1,13%	12,77%	0,49%	6,05%	137.660,55
may-09	375.741,45	126.981,19	36,04%	33,79%	1,15%	12,93%	2,59%	27,05%	135.414,42
jun-09	373.623,62	125.933,10	35,65%	33,71%	1,14%	12,84%	0,26%	3,11%	133.197,17
jul-09	371.507,27	124.036,38	35,27%	33,39%	1,14%	12,81%	0,95%	10,77%	131.012,53
ago-09	369.380,82	122.257,21	34,88%	33,10%	1,13%	12,78%	0,87%	9,92%	128.856,02
sep-09	367.244,21	120.951,68	34,51%	32,93%	1,13%	12,72%	0,49%	5,75%	126.727,30
oct-09	365.097,40	119.660,56	34,14%	32,77%	1,12%	12,65%	0,49%	5,68%	124.626,04
nov-09	362.940,34	118.135,12	33,77%	32,55%	1,12%	12,60%	0,69%	7,95%	122.551,93
dic-09	360.772,98	116.796,95	33,40%	32,37%	1,11%	12,54%	0,54%	6,28%	120.504,64
ene-10	358.622,69	114.950,14	33,04%	32,05%	1,11%	12,53%	0,99%	11,27%	118.492,91
feb-10	356.462,13	112.839,57	32,68%	31,66%	1,11%	12,54%	1,24%	13,92%	116.507,23
mar-10	354.291,26	111.650,69	32,33%	31,51%	1,10%	12,47%	0,45%	5,24%	114.547,27
abr-10	352.110,02	110.326,07	31,98%	31,33%	1,10%	12,42%	0,57%	6,68%	112.612,74
may-10	349.918,36	108.649,09	31,64%	31,05%	1,10%	12,40%	0,90%	10,32%	110.703,34
jun-10	347.716,24	107.147,47	31,30%	30,81%	1,09%	12,37%	0,76%	8,72%	108.818,77
jul-10	345.621,17	105.748,51	30,96%	30,60%	1,09%	12,33%	0,71%	8,17%	106.995,14
ago-10	343.516,10	104.538,19	30,62%	30,43%	1,09%	12,28%	0,54%	6,28%	105.195,13
sep-10	341.400,97	103.418,48	30,29%	30,29%	1,08%	12,22%	0,46%	5,36%	103.418,48



DEAL
 MEZZ. DECLINN
 MEZZ. STOPS DECLINN
 VIDA RESIDUAL DESDE

545.000.00000
 10,00%
 1,00%
10/09/10

DATE	PRINCIPAL AVAILABLE	SENIOR NOTES	MEZZANIE NOTES	CLASS A PRINCIPAL	AVERAGE LIFE CLASS A	CLASS B PRINCIPAL	AVERAGE LIFE CLASS B
					2,00		2,00
			545000000	5450000			
			17.700.000				
11/08/01	0	527.300.000	17.700.000	0	0	0	0
11/09/01	1 14.595.048	527.300.000	17.700.000	14.595.048	(47.959.328.844)	0	0
11/10/01	1 0	512.704.952	17.700.000	0	0	0	0
11/11/01	1 0	512.704.952	17.700.000	0	0	0	0
11/12/01	1 21.242.714	512.704.952	17.700.000	21.242.714	(67.870.472.453)	0	0
11/01/02	1 0	491.462.237	17.700.000	0	0	0	0
11/02/02	1 0	491.462.237	17.700.000	0	0	0	0
11/03/02	1 20.484.532	491.462.237	17.700.000	20.484.532	(63.604.472.870)	0	0
11/04/02	1 0	470.977.705	17.700.000	0	0	0	0
11/05/02	1 0	470.977.705	17.700.000	0	0	0	0
11/06/02	1 19.752.582	470.977.705	17.700.000	19.752.582	(59.514.530.956)	0	0
11/07/02	1 0	451.225.122	17.700.000	0	0	0	0
11/08/02	1 0	451.225.122	17.700.000	0	0	0	0
11/09/02	1 19.045.456	451.225.122	17.700.000	19.045.456	(55.631.778.331)	0	0
11/10/02	1 0	432.179.666	17.700.000	0	0	0	0
11/11/02	1 0	432.179.666	17.700.000	0	0	0	0
11/12/02	1 18.362.334	432.179.666	17.700.000	18.362.334	(51.965.405.349)	0	0
11/01/03	1 0	413.817.332	17.700.000	0	0	0	0
11/02/03	1 0	413.817.332	17.700.000	0	0	0	0
11/03/03	1 17.700.678	413.817.332	17.700.000	17.700.678	(48.499.857.297)	0	0
11/04/03	1 0	396.116.654	17.700.000	0	0	0	0
11/05/03	1 0	396.116.654	17.700.000	0	0	0	0
11/06/03	1 17.063.295	396.116.654	17.700.000	17.063.295	(45.183.605.892)	0	0
11/07/03	1 0	379.053.359	17.700.000	0	0	0	0
11/08/03	1 0	379.053.359	17.700.000	0	0	0	0
11/09/03	1 16.442.055	379.053.359	17.700.000	16.442.055	(42.025.893.674)	0	0
11/10/03	1 0	362.611.303	17.700.000	0	0	0	0
11/11/03	1 0	362.611.303	17.700.000	0	0	0	0
11/12/03	1 15.847.626	362.611.303	17.700.000	15.847.626	(39.064.397.559)	0	0
11/01/04	1 0	346.763.678	17.700.000	0	0	0	0
11/02/04	1 0	346.763.678	17.700.000	0	0	0	0
11/03/04	1 15.268.423	346.763.678	17.700.000	15.268.423	(36.247.236.058)	0	0
11/04/04	1 0	331.495.255	17.700.000	0	0	0	0
11/05/04	1 0	331.495.255	17.700.000	0	0	0	0
11/06/04	1 14.714.119	331.495.255	17.700.000	14.714.119	(33.577.620.449)	0	0
11/07/04	1 0	316.781.135	17.700.000	0	0	0	0
11/08/04	1 0	316.781.135	17.700.000	0	0	0	0
11/09/04	1 14.164.289	316.781.135	17.700.000	14.164.289	(31.019.793.375)	0	0
11/10/04	1 0	302.616.846	17.700.000	0	0	0	0
11/11/04	1 0	302.616.846	17.700.000	0	0	0	0
11/12/04	1 13.647.965	302.616.846	17.700.000	13.647.965	(28.647.078.410)	0	0
11/01/05	1 0	288.968.881	17.700.000	0	0	0	0
11/02/05	1 0	288.968.881	17.700.000	0	0	0	0
11/03/05	1 13.134.685	288.968.881	17.700.000	13.134.685	(26.387.581.876)	0	0
11/04/05	1 0	275.834.196	17.700.000	0	0	0	0
11/05/05	1 0	275.834.196	17.700.000	0	0	0	0
11/06/05	1 12.653.861	275.834.196	17.700.000	12.653.861	(24.257.452.047)	0	0
11/07/05	1 0	263.180.335	17.700.000	0	0	0	0
11/08/05	1 0	263.180.335	17.700.000	0	0	0	0
11/09/05	1 12.162.526	263.180.335	17.700.000	12.162.526	(22.196.610.048)	0	0
11/10/05	1 0	251.017.809	17.700.000	0	0	0	0
11/11/05	1 0	251.017.809	17.700.000	0	0	0	0
11/12/05	1 11.715.496	251.017.809	17.700.000	11.715.496	(20.314.670.747)	0	0
11/01/06	1 0	239.302.313	17.700.000	0	0	0	0
11/02/06	1 0	239.302.313	17.700.000	0	0	0	0
11/03/06	1 11.252.766	239.302.313	17.700.000	11.252.766	(18.499.547.937)	0	0
11/04/06	1 0	228.049.546	17.700.000	0	0	0	0
11/05/06	1 0	228.049.546	17.700.000	0	0	0	0
11/06/06	1 10.837.510	228.049.546	17.700.000	10.837.510	(16.819.815.097)	0	0

DEAL
 MEZZ. DECLINN
 MEZZ. STOPS DECLINN
 VIDA RESIDUAL DESDE

545.000.00000
 10,00%
 1,00%
 10/09/10

DATE		PRINCIPAL AVAILABLE	SENIOR NOTES	MEZZANIE NOTES	CLASS A PRINCIPAL	AVERAGE LIFE CLASS A	CLASS B PRINCIPAL	AVERAGE LIFE CLASS B
						2,00		2,00
11/07/06	1	0	217.212.036	17.700.000	0	0	0	0
11/08/06	1	0	217.212.036	17.700.000	0	0	0	0
11/09/06	1	10.419.886	217.212.036	17.700.000	10.419.886	(15.213.033.916)	0	0
11/10/06	1	0	206.792.150	17.700.000	0	0	0	0
11/11/06	1	0	206.792.150	17.700.000	0	0	0	0
11/12/06	1	10.033.584	206.792.150	17.700.000	10.033.584	(13.735.976.557)	0	0
11/01/07	1	0	196.758.566	17.700.000	0	0	0	0
11/02/07	1	0	196.758.566	17.700.000	0	0	0	0
11/03/07	1	9.643.307	196.758.566	17.700.000	9.643.307	(12.333.790.112)	0	0
11/04/07	1	0	187.115.259	17.700.000	0	0	0	0
11/05/07	1	0	187.115.259	17.700.000	0	0	0	0
11/06/07	1	9.284.086	187.115.259	17.700.000	9.284.086	(11.020.209.693)	0	0
11/07/07	1	0	177.831.173	17.700.000	0	0	0	0
11/08/07	1	0	177.831.173	17.700.000	0	0	0	0
11/09/07	1	8.916.482	177.831.173	17.700.000	8.181.454	(8.958.692.010)	735.028	(804.855.740)
11/10/07	1	0	169.649.719	16.964.972	0	0	0	0
11/11/07	1	0	169.649.719	16.964.972	0	0	0	0
11/12/07	1	8.582.731	169.649.719	16.964.972	7.802.483	(7.833.692.663)	780.248	(783.369.266)
11/01/08	1	0	161.847.237	16.184.724	0	0	0	0
11/02/08	1	0	161.847.237	16.184.724	0	0	0	0
11/03/08	1	8.240.686	161.847.237	16.184.724	7.491.533	(6.839.769.738)	749.153	(683.976.974)
11/04/08	1	0	154.355.703	15.435.570	0	0	0	0
11/05/08	1	0	154.355.703	15.435.570	0	0	0	0
11/06/08	1	7.930.676	154.355.703	15.435.570	7.209.705	(5.919.167.853)	720.971	(591.916.785)
11/07/08	1	0	147.145.998	14.714.600	0	0	0	0
11/08/08	1	0	147.145.998	14.714.600	0	0	0	0
11/09/08	1	7.603.684	147.145.998	14.714.600	6.912.440	(5.039.168.539)	691.244	(503.916.854)
11/10/08	1	0	140.233.559	14.023.356	0	0	0	0
11/11/08	1	0	140.233.559	14.023.356	0	0	0	0
11/12/08	1	7.316.238	140.233.559	14.023.356	6.651.125	(4.243.417.943)	665.113	(424.341.794)
11/01/09	1	0	133.582.433	13.358.243	0	0	0	0
11/02/09	1	0	133.582.433	13.358.243	0	0	0	0
11/03/09	1	7.004.787	133.582.433	13.358.243	6.367.988	(3.489.657.661)	636.799	(348.965.766)
11/04/09	1	0	127.214.445	12.721.444	0	0	0	0
11/05/09	1	0	127.214.445	12.721.444	0	0	0	0
11/06/09	1	6.738.721	127.214.445	12.721.444	6.126.110	(2.793.506.363)	612.611	(279.350.636)
11/07/09	1	0	121.088.334	12.108.833	0	0	0	0
11/08/09	1	0	121.088.334	12.108.833	0	0	0	0
11/09/09	1	6.469.870	121.088.334	12.108.833	5.881.700	(2.140.938.754)	588.170	(214.093.875)
11/10/09	1	0	115.206.635	11.520.663	0	0	0	0
11/11/09	1	0	115.206.635	11.520.663	0	0	0	0
11/12/09	1	6.222.658	115.206.635	11.520.663	5.656.962	(1.544.350.529)	565.696	(154.435.053)
11/01/10	1	0	109.549.673	10.954.967	0	0	0	0
11/02/10	1	0	109.549.673	10.954.967	0	0	0	0
11/03/10	1	5.957.370	109.549.673	10.954.967	5.415.791	(991.089.707)	541.579	(99.108.971)
11/04/10	1	0	104.133.882	10.413.388	0	0	0	0
11/05/10	1	0	104.133.882	10.413.388	0	0	0	0
11/06/10	1	5.728.497	104.133.882	10.413.388	5.207.725	(473.902.944)	520.772	(47.390.294)
11/07/10	1	0	98.926.158	9.892.616	0	0	0	0
11/08/10	1	0	98.926.158	9.892.616	0	0	0	0
11/09/10	1	5.400.292	98.926.158	9.892.616	4.909.356	4.909.356	490.936	490.936
11/10/10	1	0	94.016.802	9.401.680	0	0	0	0
11/11/10	1	0	94.016.802	9.401.680	0	0	0	0
11/12/10	1	5.192.579	94.016.802	9.401.680	4.720.526	434.288.395	472.053	43.428.839
11/01/11	1	0	89.296.276	8.929.628	0	0	0	0
11/02/11	1	0	89.296.276	8.929.628	0	0	0	0
11/03/11	1	4.906.189	89.296.276	8.929.628	4.460.172	811.751.346	446.017	81.175.135
11/04/11	1	0	84.836.103	8.483.610	0	0	0	0
11/05/11	1	0	84.836.103	8.483.610	0	0	0	0
11/06/11	1	4.717.112	84.836.103	8.483.610	4.288.284	1.174.989.681	428.828	117.498.968
11/07/11	1	0	80.547.820	8.054.782	0	0	0	0
11/08/11	1	0	80.547.820	8.054.782	0	0	0	0
11/09/11	1	4.515.153	80.547.820	8.054.782	4.104.685	1.502.314.538	410.468	150.231.454
11/10/11	1	0	76.443.135	7.644.314	(0)	(0)	0	0
11/11/11	1	0	76.443.135	7.644.314	0	0	0	0

DEAL
 MEZZ. DECLINN
 MEZZ. STOPS DECLINN
 VIDA RESIDUAL DESDE

545.000.00000
 10,00%
 1,00%
10/09/10

DATE		PRINCIPAL AVAILABLE	SENIOR NOTES	MEZZANIE NOTES	CLASS A PRINCIPAL	AVERAGE LIFE CLASS A	CLASS B PRINCIPAL	AVERAGE LIFE CLASS B
						2,00		2,00
11/12/11	1	4.340.104	76.443.135	7.644.314	3.945.549	1.803.115.821	394.555	180.311.582
11/01/12	1	0	72.497.586	7.249.759	0	0	0	0
11/02/12	1	0	72.497.586	7.249.759	0	0	0	0
11/03/12	1	4.148.888	72.497.586	7.249.759	3.771.716	2.066.900.564	377.172	206.690.056
11/04/12	1	0	68.725.870	6.872.587	0	0	0	0
11/05/12	1	0	68.725.870	6.872.587	0	0	0	0
11/06/12	1	3.987.070	68.725.870	6.872.587	3.624.609	2.319.750.032	362.461	231.975.003
11/07/12	1	0	65.101.261	6.510.126	0	0	0	0
11/08/12	1	0	65.101.261	6.510.126	0	0	0	0
11/09/12	1	3.790.598	65.101.261	6.510.126	3.445.999	2.522.470.928	344.600	252.247.093
11/10/12	1	0	61.655.262	6.165.526	0	0	0	0
11/11/12	1	0	61.655.262	6.165.526	0	0	0	0
11/12/12	1	3.642.030	61.655.262	6.165.526	3.310.936	2.724.900.546	331.094	272.490.055
11/01/13	1	0	58.344.326	5.834.433	0	0	0	0
11/02/13	1	0	58.344.326	5.834.433	0	0	0	0
11/03/13	1	64.178.758	58.344.326	5.834.433	58.344.326	53.268.369.524	5.834.433	5.326.836.952