



## **F.T.H. HIPOTEBANSA X**

**FRANCISCO FORTES CLAVERO**

**ANALYST**

**SANTANDER DE TITULIZACION, S.G.F.T, S.A.**

**CIUDAD GRUPO SANTANDER**

**28660 BOADILLA DEL MONTE**

**[ffortes@gruposantander.com](mailto:ffortes@gruposantander.com)**

**Tel: 912893290**



NAME OF THE FUND:

F.T.H. HIPOTEBANSA X

INFORMATION AT:

QUARTER/SEMESTER: June 18, 2013 - September 18, 2013 YEAR: 2013

Acting on behalf of Santander de Titulización S.G.F.T., S.A. as General Manager:	Signature:
IGNACIO ORTEGA GAVARA - GENERAL MANAGER	

**I. DATA OF THE FUND**

Constitution Date	March 04, 2002	Paying Agent	BANCO SANTANDER	
Disbursement Date	March 07, 2002	Negotiation Market	AIAF	
Final Date of Redemption	March 18, 2034	Ratings Agencies	MOODY'S ESPAÑA	
			STANDARD & POORS	
Management Company	SANTANDER DE TITULIZACION, S.G.F.T., S.A.	Rating	Initial	Current
Credit Rights 's Seller	BANCO SANTANDER	CLASS A	Aaa/AAA	Baa1/AA-
		CLASS B	A2/A	Ba3/BB

## II. SECURITIES ISSUED CHARGED TO THE FUND: SECURITISATION BONDS

CLASS PRIORITY ISIN CODE	NUM BONDS	NOMINAL			
			Initial	Current	%Act/In
CLASS A ES0338356001	8.987	Nominal per Bond	100.000,00	12.490,54	
		Total Nominal	898.700.000,00	112.252.482,98	12,49 %
CLASS B ES0338356019	183	Nominal per Bond	100.000,00	42.938,15	
		Total Nominal	18.300.000,00	7.857.681,45	42,94 %

REDEMPTION AND INTEREST OF THE BONDS					
Current			Next		
Payment Date of the Current Period September 18, 2013			Next Payment Date December 18, 2013		
	Redemption of the Bonds	Gross Interest	Interest Rate	Gross Interest Next Coupon	Net Interest Next Coupon
CLASS A	475,43 €	13,88 €	0,4330 %	13,67 €	10,80 €
CLASS B	1.634,35 €	86,46 €	0,7730 %	83,90 €	66,28 €
Accrued amortisation due not payed	0,00 €				
Scheduled Amortisation	NO				

**III. ASSET PURCHASED BY THE FUND: CREDIT RIGHTS**

CREDIT RIGHTS	ISSUE DATE	CURRENT DATE
Numbre of CR's	14.276	3.906
CR's Outstanding to be amortised	917.000.066,55	120.110.184,13
CR's Outstanding per Loan to be amortised	64.233,68	30.750,17
Interest Rate	5,57 %	2,15 %

PREPAYMENT RATE	CURRENT SITUATION
Monthly Single Rate	3,39 %
Average Monthly Single Rate	10,53 %
Constant Prepayment Rate from Constitution	10,33 %

CURRENT DELINQUENCY	Up to 1 month	From 1 to 6 months	Greater than 6 months
Debt Due (Principal + Interest)	2.517,22	24.357,20	0,00
Debt to be amortised	0,00	0,00	120.087.833,76
Total Debt	2.517,22	24.357,20	120.087.833,76

**F.T.H. HIPOTEBANSA X****QUARTERLY BONDS PAYOUT REPORT**

September 18, 2013

<b>BONDS. PRINCIPAL</b>	
Previous Balance	124.681.939,89 €
Principal Amortised	4.571.775,46 €
Outstanding Balance	120.110.164,43 €
% of Initial Balance	13,10%
Principal accrued and unpaid	0,00 €

<b>INTEREST PAID</b>	
CLASS A	124.739,56 €
CLASS B	15.822,18 €
Interest accrued and unpaid	0,00 €

<b>DATA</b>	
Determination Date	September 11, 2013
Payment Date	September 18, 2013
Last Payment Date	June 18, 2013
Number of Days (Act/360)	92
Reference Interest Rate (%)	0,223%
Next Payment Date	December 18, 2013

<b>RESIDUAL LIFE (YEARS)</b>		
	<b>INITIAL</b>	<b>September 18, 2013</b>
CLASS A	4.35	1,12
CLASS B	9.41	1,16

## F.T.H. HIPOTEBANSA X

### QUARTERLY COLLATERAL REPORT

September 18, 2013

PRINCIPAL	
Previous Balance	124.681.945,12 €
Principal Amortised	4.571.760,99 €
Outstanding Balance	120.110.184,13 €
Number of Credit Rights	3.906
LTV	25,85%

INTEREST	
Interest received during relevant period	674.919,38 €
Interest accrued during relevant period	686.230,14 €

PRINCIPAL BALANCE IN ARREARS					
	UP to 30 DAYS	30 to 60 DAYS	60 to 90 DAYS	90 to 180 DAYS	> 180 DAYS
Principal Balance in Arrears	2.082,55 €	7.867,27 €	8.138,72 €	4.261,83 €	0,00 €
Interest accrued on Credit Rights in Arrears	434,67 €	1.131,90 €	1.899,54 €	1.057,94 €	0,00 €
Outstanding Balance	308.254,92 €	543.584,05 €	482.679,19 €	100.568,21 €	1.054.049,46 €
Number of Credit Rights	9	11	6	6	66
% of Outstanding Balance	0,26%	0,45%	0,40%	0,08%	0,88%

(1) This report does not include loans in arrears from 1 to 15 days, as it is considered a technical arrear with a high percentage of recovery.

**F.T.H. HIPOTEBANSA X****QUARTERLY COLLATERAL REPORT****September 18, 2013**

<b>CONTENTIOUS / JUDICIAL</b>	
Last balance	942.372,25 €
Difference in Actual Period	111.677,21 €
Current balance	1.054.049,46 €
Contentious CR's number	66

<b>TRANSITORY PROPERTIES</b>	
Last balance	101.921,16 €
Difference in Actual Period	-100.092,41 €
Current balance	1.828,75 €
Transitory properties CR's number	2

<b>NET LOSS</b>	
Last balance	177.833,94 €
Difference in Actual Period	0,00 €
Current balance	177.833,94 €

## F.T.H. HIPOTEBANSA X

### QUARTERLY REPORT - ALLOCATION OF CASH

September 18, 2013

TOTAL CASH RECEIVED END OF PERIOD	5.363.300,74 €
<b>CASH RECEIVED - PRINCIPAL</b>	
Amortisation of Credit Rights	4.490.511,69 €
<b>CASH RECEIVED - INTEREST</b>	
Interest received from Credit Rights	674.919,38 €
Interest received under GIC	638,83 €
<b>CONTENTIOUS</b>	85.520,63 €
<b>INCOMES/EXPENSES OF TRANSTORY PROPERTIES</b>	56.849,08 €
<b>RESERVE FUNDS</b>	54.861,13 €
<b>OTHERS</b>	0,00 €

TREASURY ACCOUNT STATEMENT	3.275.322,21 €
<b>PRINCIPAL RESERVE FUND</b>	
Previous Balance	1.246.819,45 €
Period utilization	45.717,61 €
Outstanding Balance	1.201.101,84 €
<b>PRINCIPAL RESERVE FUND</b>	
Previous Balance	2.083.363,89 €
Period utilization	9.143,52 €
Outstanding Balance	2.074.220,37 €
<b>WITHHOLDING TAXES</b>	0,00 €
<b>ISSUE EXPENSES WITHHELD</b>	0,00 €
<b>OTHERS</b>	0,00 €

TOTAL CASH PAID END OF PERIOD	5.363.300,74 €
ORDINARY EXPENSES	4.344,52 €
MANAGEMENT FEE	19.380,00 €
SWAP PAYMENT CLASS A	541.822,63 €
SWAP COLLECTION CLASS A	-124.772,57 €
CLASS A INTEREST	124.739,56 €
CLASS A REDEMPTION	4.272.689,41 €
CLASS B REDEMPTION	299.086,05 €
SWAP PAYMENT CLASS B	37.927,61 €
SWAP COLLECTION CLASS B	-15.821,41 €
CLASS B INTEREST	15.822,18 €
SUBORDINATED LOAN A INTEREST	15.284,79 €
SUBORDINATED LOAN B INTEREST	0,00 €
SUBORDINATED LOAN A REDEMPTION	54.861,13 €
SUBORDINATED LOAN B REDEMPTION	0,00 €
ADMINISTRATION FEE	6.000,00 €
VARIABLE FEE	111.936,84 €



## F.T.H. HIPOTEBANSA X

### CREDIT ENHANCEMENT AND SUBORDINATED LOAN

September 18, 2013

CREDIT ENHANCEMENT		
CONCEPTS	INITIAL	September 18, 2013
SUBORDINATED ISSUE	2,00 %	6,54 %
PRINCIPAL RESERVE FUND	9.170.000,00 € (1,00 %)	1.201.101,84 € 1,00%
SECONDARY RESERVE FUND	3.668.000,00 € (0,40 %)	2.074.220,37 € 1,73%

SUBORDINATED LOANS		
CONCEPTS	INITIAL	September 18, 2013
SUBORDINATED LOAN A		
Total Outstanding Subordinated Loan	14.046.958,00 €	3.277.047,98 €
Interest Rate	4,660 %	1,55%

## F.T.H. HIPOTEBANSA X

### TRIGGERS OF THE MODEL

September 18, 2013

BOND's TRIGGERS	
IF 1) IS HIGHER THAN 2) CLASS B IS NOT AMORTISED	
1) CREDIT RIGHTS IN ARREARS OVER 90 DAYS	1.154.617,67 €
2) 7% CREDIT RIGHTS OUTSTANDING BALANCE	8.407.712,89 €

#### CLASS B IS AMORTISED

AGREEMENT	COUNTERPARTY	RATING AGENCY	MINIMUM RATING REQUIRED	CURRENT RATING
TREASSURY ACCOOUNT	BANCO SANTANDER	MOODYS S&P	P-1 c/p A-1 c/p A l/p	Baa2 l/t P-2 s/t BBB l/t A-2 s/t
SWAP	BANCO SANTANDER	MOODYS S&P	A2 l/p P-1 c/p A- l/p	Baa2 l/t P-2 s/t BBB l/t A-2 s/t

COUNTERPARTY DOES NOT HAVE THE MINIMUM RATING REQUIRED. TREASURY ACCOUNT HAS BEEN TRANSFERRED TO A COUNTERPARTY WITH MINIMUM RATING REQUIRED. SWAP DEPOSIT HAS BEEN FUNDED

## F.T.H. HIPOTEBANSA X

### DEFINITIONS

September 18, 2013

**DETERMINATION DATE** Means the date in which the Gestora will carry out the necessary calculations, on behalf of the Fund, for the distribution of the available funds at this date, according with the Order of Priority of Payments.  
All the information regarding the Assets (Outstading Balance of the Credit Rights, arrears' tables, transitory properties, stratiphication tables, etc.) are refered to this mentioned date.

**NET LOSSES** Those loans which the Originator considers that will not recover (net of recoveries).

**TRANSITORY PROPERTIES** Those assets in the balance of the Fund as a consequence of a judicial or non-judicial process.

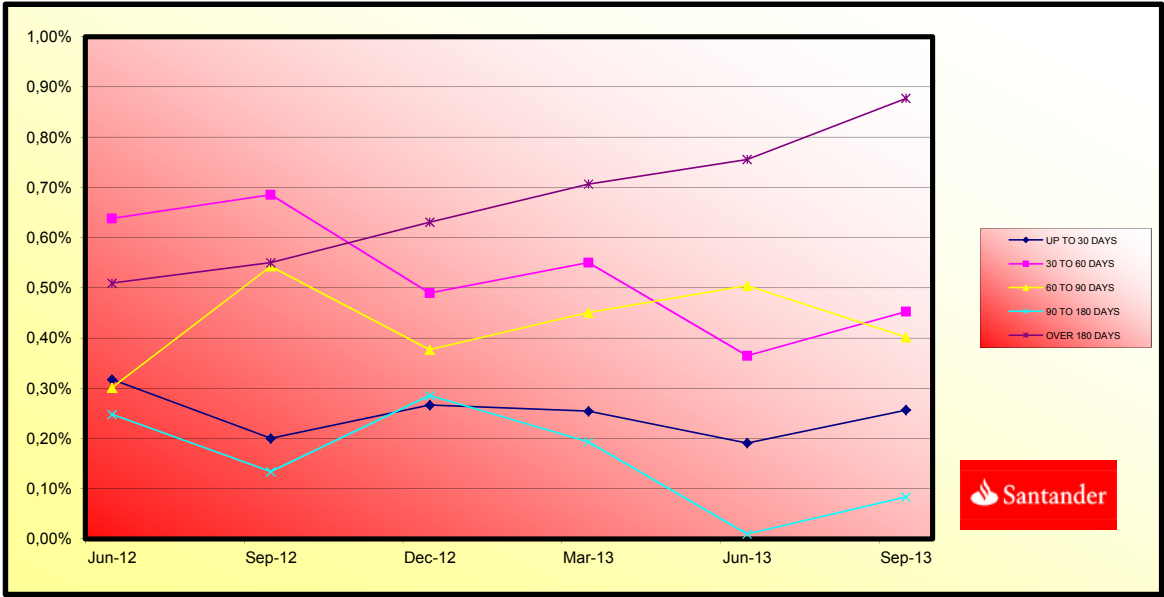
**CONTENTIOUS / JUDICIAL** Loans in which the Originator will take legal actions. This amount is included in the bucket > 180 days in arrears.



**FONDO DE TITULIZACIÓN DE ACTIVOS  
HIPOTEBANSA X**

Report date: September 18th, 2013

ARREARS PERFORMANCE						
	11-Jun-12	11-Sep-12	11-Dec-12	11-Mar-13	11-Jun-13	11-Sep-13
<b>UP TO 30 DAYS</b>	0,32%	0,20%	0,27%	0,25%	0,19%	0,257%
<b>30 TO 60 DAYS</b>	0,64%	0,69%	0,49%	0,55%	0,36%	0,453%
<b>60 TO 90 DAYS</b>	0,30%	0,54%	0,38%	0,45%	0,50%	0,402%
<b>90 TO 180 DAYS</b>	0,25%	0,13%	0,29%	0,19%	0,01%	0,084%
<b>OVER 180 DAYS</b>	0,51%	0,55%	0,63%	0,71%	0,76%	0,878%





**FONDO DE TITULIZACIÓN DE ACTIVOS  
HIPOTEBANSA X**

LTV

Report date: September 18th, 2013

LTV				
	OUTS, BALANCE	% OUTSTANDING	NUMBER LOANS	% NUM LOANS
0-9,99	10.618.076,66 €	8,83%	1.063	27,06%
10-19,99	11.276.049,85 €	9,38%	566	14,41%
20-29,99	20.821.516,26 €	17,32%	632	16,09%
30-39,99	25.422.757,95 €	21,15%	673	16,09%
40-49,99	29.536.773,46 €	24,57%	606	17,13%
50-59,99	17.376.067,83 €	14,45%	308	15,43%
60-69,99	4.991.338,93 €	4,15%	78	7,84%
70-79,99	59.548,48 €	0,05%	1	1,99%
>80	127.311,89 €	0,11%	1	0,03%

**PREPAGOS -HIPOTEBANSA X**

18-sep-13

Fecha	Balance Teórico 0,166386	Balance Real	0,90% Vector Prepago	Tasa Prepago Mensual desde Inicio	Tasa Prepago Anualizada desde Inicio 10,53%	Tasa Prepago Mensual	Tasa Prepago Mensual Anualizada	
1	917.000.000,00		100,00%	100,00%				
2	914.051.238,01	902.907.626,34	99,10%	98,78%	1,22%	13,69%	1,22%	13,69%
3	911.088.788,86	890.154.639,86	98,20%	97,70%	1,16%	13,02%	1,09%	12,34%
4	908.112.589,00	880.892.526,40	97,31%	97,00%	1,01%	11,46%	0,72%	8,26%
5	905.123.839,60	869.332.197,68	96,43%	96,05%	1,00%	11,40%	0,99%	11,22%
6	902.121.217,43	859.491.890,58	95,56%	95,27%	0,96%	10,97%	0,80%	9,22%
7	899.104.658,08	851.058.890,36	94,69%	94,66%	0,91%	10,40%	0,65%	7,52%
8	896.074.096,87	841.285.243,08	93,84%	93,89%	0,90%	10,25%	0,81%	9,34%
9	893.029.468,80	832.131.966,74	92,99%	93,18%	0,88%	10,05%	0,75%	8,65%
10	889.970.708,59	822.023.405,27	92,15%	92,37%	0,88%	10,05%	0,88%	10,01%
11	886.899.610,85	810.027.297,96	91,31%	91,33%	0,90%	10,31%	1,12%	12,62%
12	883.814.258,11	801.043.118,49	90,49%	90,63%	0,89%	10,17%	0,76%	8,79%
13	880.714.584,18	792.833.367,84	89,67%	90,02%	0,87%	9,98%	0,68%	7,82%
14	877.600.522,61	782.569.617,37	88,86%	89,17%	0,88%	10,04%	0,94%	10,76%
15	874.472.006,59	777.414.915,92	88,06%	88,90%	0,84%	9,59%	0,30%	3,58%
16	871.328.969,05	763.569.938,46	87,26%	87,63%	0,88%	10,02%	1,43%	15,84%
17	868.177.587,15	753.062.767,91	86,47%	86,74%	0,89%	10,12%	1,02%	11,56%
18	865.011.577,58	740.400.511,46	85,69%	85,59%	0,91%	10,40%	1,32%	14,76%
19	861.830.872,46	730.693.726,24	84,91%	84,78%	0,91%	10,42%	0,95%	10,79%
20	858.635.403,56	717.375.382,95	84,14%	83,55%	0,94%	10,73%	1,46%	16,15%
21	855.425.102,36	702.361.237,98	83,38%	82,11%	0,98%	11,16%	1,73%	18,85%
22	852.199.900,01	689.319.019,25	82,63%	80,89%	1,00%	11,42%	1,49%	16,44%
23	848.973.670,82	676.926.186,29	81,88%	79,73%	1,02%	11,62%	1,42%	15,82%
24	845.732.466,56	666.509.277,54	81,14%	78,81%	1,03%	11,68%	1,16%	13,08%
25	842.476.217,70	657.731.166,30	80,41%	78,07%	1,03%	11,64%	0,94%	10,67%
26	839.204.854,42	644.603.859,65	79,68%	76,81%	1,05%	11,89%	1,61%	17,74%
27	835.918.306,57	635.093.194,16	78,96%	75,98%	1,05%	11,91%	1,09%	12,30%
28	832.616.503,65	627.050.897,34	78,25%	75,31%	1,04%	11,84%	0,87%	10,01%
29	829.312.946,33	615.244.852,93	77,54%	74,19%	1,06%	12,01%	1,49%	16,50%
30	825.994.055,00	604.894.935,99	76,84%	73,23%	1,07%	12,09%	1,29%	14,40%
31	822.659.758,48	572.180.148,60	76,14%	69,55%	1,20%	13,52%	5,02%	46,13%
32	819.309.985,26	562.399.338,00	75,45%	68,64%	1,21%	13,55%	1,31%	14,61%
33	815.944.663,52	553.054.228,84	74,77%	67,78%	1,21%	13,57%	1,26%	14,07%
34	812.563.721,08	543.620.997,39	74,09%	66,90%	1,21%	13,60%	1,30%	14,50%
35	809.190.318,92	530.939.482,41	73,42%	65,61%	1,23%	13,82%	1,93%	20,81%
36	805.801.258,56	521.505.382,83	72,76%	64,72%	1,24%	13,86%	1,36%	15,19%
37	802.396.467,32	513.337.300,73	72,10%	63,98%	1,23%	13,83%	1,15%	12,94%
38	798.975.872,16	505.464.441,61	71,45%	63,26%	1,23%	13,80%	1,11%	12,56%
39	795.539.399,74	494.636.640,32	70,80%	62,18%	1,24%	13,93%	1,72%	18,79%
40	792.086.976,37	484.288.743,29	70,16%	61,14%	1,25%	14,05%	1,67%	18,25%
41	788.648.823,17	475.111.533,01	69,53%	60,24%	1,26%	14,10%	1,47%	16,25%
42	785.194.711,21	466.804.454,53	68,90%	59,45%	1,26%	14,12%	1,32%	14,70%
43	781.724.566,41	461.752.924,62	68,28%	59,07%	1,25%	13,97%	0,64%	7,45%
44	778.238.314,35	454.431.330,85	67,66%	58,39%	1,24%	13,94%	1,14%	12,90%
45	774.735.880,28	446.092.808,14	67,05%	57,58%	1,25%	13,98%	1,39%	15,47%
46	771.217.189,08	437.657.141,61	66,44%	56,75%	1,25%	14,02%	1,44%	16,01%
47	767.705.836,63	427.609.446,30	65,84%	55,70%	1,26%	14,16%	1,85%	20,06%
48	764.178.185,66	420.381.426,81	65,24%	55,01%	1,26%	14,15%	1,24%	13,87%
49	760.634.160,51	413.595.736,60	64,65%	54,38%	1,26%	14,13%	1,16%	13,02%
50	757.073.685,18	406.186.992,01	64,07%	53,65%	1,26%	14,14%	1,33%	14,84%
51	753.496.683,30	399.504.359,17	63,49%	53,02%	1,26%	14,13%	1,18%	13,26%
52	749.903.078,18	392.379.303,86	62,92%	52,32%	1,26%	14,14%	1,31%	14,66%
53	746.318.997,85	385.629.856,25	62,35%	51,67%	1,26%	14,13%	1,25%	13,99%
54	742.718.281,41	378.462.793,09	61,78%	50,96%	1,26%	14,16%	1,38%	15,39%
55	739.100.851,65	374.805.632,94	61,22%	50,71%	1,25%	14,01%	0,48%	5,63%
56	735.466.630,99	368.714.578,57	60,67%	50,13%	1,25%	13,99%	1,14%	12,84%
57	731.815.541,48	363.303.830,90	60,12%	49,64%	1,24%	13,93%	0,98%	11,10%
58	728.147.504,84	357.755.940,18	59,58%	49,13%	1,24%	13,90%	1,03%	11,69%
59	724.498.421,62	349.986.397,02	59,04%	48,31%	1,25%	13,98%	1,68%	18,39%
60	720.832.400,59	343.637.487,31	58,50%	47,67%	1,25%	13,99%	1,31%	14,68%
61	717.149.363,10	338.632.689,75	57,98%	47,22%	1,24%	13,94%	0,95%	10,83%
62	713.449.230,18	334.334.773,79	57,45%	46,86%	1,23%	13,85%	0,76%	8,72%
63	709.731.922,48	328.566.147,99	56,93%	46,29%	1,23%	13,85%	1,21%	13,60%
64	705.997.360,27	323.831.652,27	56,42%	45,87%	1,23%	13,80%	0,92%	10,49%
65	702.276.916,27	317.422.711,80	55,91%	45,20%	1,23%	13,83%	1,46%	16,18%
66	698.539.203,20	313.068.279,93	55,40%	44,82%	1,23%	13,77%	0,84%	9,67%
67	694.784.140,91	309.903.729,44	54,90%	44,60%	1,22%	13,65%	0,48%	5,56%
68	691.011.648,88	306.844.430,83	54,40%	44,41%	1,20%	13,53%	0,45%	5,23%
69	687.221.646,19	302.953.643,62	53,91%	44,08%	1,20%	13,46%	0,72%	8,34%
70	683.414.051,58	300.240.796,83	53,42%	43,93%	1,18%	13,33%	0,34%	4,04%
71	679.654.390,30	290.685.227,82	52,94%	42,77%	1,21%	13,55%	2,65%	27,52%
72	675.877.277,93	287.175.817,36	52,46%	42,49%	1,20%	13,47%	0,66%	7,59%
73	672.082.633,46	284.295.478,55	51,99%	42,30%	1,19%	13,36%	0,44%	5,20%

74	1-abr-08	668.270.375,51	279.959.571,85	51,52%	41,89%	1,18%	13,33%	0,96%	10,97%
75	1-may-08	664.440.422,34	277.116.950,87	51,05%	41,71%	1,17%	13,22%	0,44%	5,21%
76	1-jun-08	660.592.691,80	273.736.785,58	50,59%	41,44%	1,17%	13,15%	0,64%	7,46%
77	1-jul-08	656.784.093,55	269.287.703,97	50,13%	41,00%	1,17%	13,13%	1,05%	11,95%
78	1-ago-08	652.957.817,05	265.480.611,09	49,68%	40,66%	1,16%	13,09%	0,84%	9,58%
79	1-sep-08	649.113.780,26	262.934.156,67	49,23%	40,51%	1,15%	12,98%	0,37%	4,38%
80	1-oct-08	645.251.900,73	257.017.816,26	48,78%	39,83%	1,16%	13,05%	1,67%	18,25%
81	1-nov-08	641.372.095,64	253.796.965,14	48,34%	39,57%	1,15%	12,98%	0,66%	7,59%
82	1-dic-08	637.474.281,79	253.034.979,81	47,91%	39,69%	1,13%	12,79%	-0,31%	-3,78%
83	1-ene-09	633.619.665,84	248.984.122,55	47,47%	39,30%	1,13%	12,78%	1,00%	11,39%
84	1-feb-09	629.747.158,05	245.892.346,76	47,04%	39,05%	1,13%	12,71%	0,63%	7,35%
85	1-mar-09	625.856.675,37	242.721.714,83	46,62%	38,78%	1,12%	12,66%	0,68%	7,82%
86	1-abr-09	621.948.134,36	239.660.002,37	46,20%	38,53%	1,12%	12,60%	0,64%	7,43%
87	1-may-09	618.021.451,21	236.929.494,08	45,78%	38,34%	1,11%	12,52%	0,51%	5,96%
88	1-jun-09	614.076.541,71	233.591.701,40	45,36%	38,04%	1,10%	12,48%	0,78%	8,92%
89	1-jul-09	610.215.446,79	230.919.275,33	44,95%	37,84%	1,10%	12,41%	0,52%	6,05%
90	1-ago-09	606.336.429,95	227.722.901,60	44,55%	37,56%	1,09%	12,37%	0,75%	8,67%
91	1-sep-09	602.439.408,00	224.965.948,55	44,14%	37,34%	1,09%	12,31%	0,57%	6,65%
92	1-oct-09	598.524.297,39	222.134.700,04	43,74%	37,11%	1,08%	12,25%	0,61%	7,11%
93	1-nov-09	594.591.014,13	218.071.313,12	43,35%	36,68%	1,08%	12,26%	1,18%	13,27%
94	1-dic-09	590.639.473,88	214.612.275,19	42,96%	36,34%	1,08%	12,25%	0,93%	10,58%
95	1-ene-10	586.831.116,90	210.991.830,11	42,57%	35,95%	1,08%	12,24%	1,05%	11,89%
96	1-feb-10	583.005.082,80	208.536.251,89	42,18%	35,77%	1,08%	12,18%	0,52%	6,01%
97	1-mar-10	579.161.289,52	205.823.790,41	41,80%	35,54%	1,07%	12,13%	0,65%	7,48%
98	1-abr-10	575.299.654,63	202.985.015,60	41,42%	35,28%	1,07%	12,09%	0,72%	8,28%
99	1-may-10	571.420.095,33	200.283.375,02	41,05%	35,05%	1,06%	12,05%	0,66%	7,65%
100	1-jun-10	567.522.528,40	197.884.880,95	40,68%	34,87%	1,06%	11,99%	0,52%	6,05%
101	1-jul-10	563.791.776,67	195.422.088,83	40,31%	34,66%	1,05%	11,94%	0,59%	6,87%
102	1-ago-10	560.043.708,04	193.029.799,42	39,95%	34,47%	1,05%	11,89%	0,56%	6,55%
103	1-sep-10	556.278.242,12	191.139.348,40	39,58%	34,36%	1,04%	11,81%	0,31%	3,65%
104	1-oct-10	552.495.298,16	189.144.901,93	39,23%	34,23%	1,04%	11,74%	0,37%	4,30%
105	1-nov-10	548.694.795,04	186.777.449,25	38,87%	34,04%	1,03%	11,69%	0,57%	6,60%
106	1-dic-10	544.876.651,25	184.528.318,10	38,52%	33,87%	1,03%	11,64%	0,51%	5,97%
107	1-ene-11	541.173.390,47	181.748.346,38	38,17%	33,58%	1,02%	11,62%	0,83%	9,55%
108	1-feb-11	537.452.940,38	179.635.592,90	37,83%	33,42%	1,02%	11,57%	0,48%	5,59%
109	1-mar-11	533.715.221,20	177.874.970,78	37,48%	33,33%	1,01%	11,49%	0,29%	3,39%
110	1-abr-11	529.960.152,78	175.729.075,10	37,14%	33,16%	1,01%	11,44%	0,51%	5,91%
111	1-may-11	526.187.654,58	173.869.118,62	36,81%	33,04%	1,00%	11,38%	0,35%	4,11%
112	1-jun-11	522.397.645,70	171.883.097,35	36,48%	32,90%	1,00%	11,32%	0,43%	4,98%
113	1-jul-11	518.661.127,89	169.703.951,56	36,15%	32,72%	0,99%	11,28%	0,56%	6,48%
114	1-ago-11	514.907.266,42	167.777.936,36	35,82%	32,58%	0,99%	11,23%	0,41%	4,86%
115	1-sep-11	511.135.980,76	165.849.483,75	35,50%	32,45%	0,98%	11,17%	0,42%	4,93%
116	1-oct-11	507.347.190,06	164.007.691,13	35,17%	32,33%	0,98%	11,12%	0,37%	4,37%
117	1-nov-11	503.540.813,05	162.003.586,19	34,86%	32,17%	0,97%	11,07%	0,48%	5,56%
118	1-dic-11	499.716.768,11	159.836.576,49	34,54%	31,99%	0,97%	11,03%	0,58%	6,77%
119	1-ene-12	495.985.493,72	157.063.492,09	34,23%	31,67%	0,97%	11,04%	1,00%	11,32%
120	1-feb-12	492.236.899,99	154.933.434,94	33,92%	31,48%	0,97%	11,00%	0,60%	7,02%
121	1-mar-12	488.470.906,55	152.694.101,29	33,61%	31,26%	0,96%	10,98%	0,69%	7,92%
122	1-abr-12	484.687.432,61	150.897.774,57	33,31%	31,13%	0,96%	10,93%	0,41%	4,75%
123	1-may-12	480.886.397,05	149.202.407,51	33,01%	31,03%	0,95%	10,87%	0,34%	4,03%
124	1-jun-12	477.067.718,35	147.150.529,29	32,71%	30,84%	0,95%	10,84%	0,59%	6,81%
125	1-jul-12	473.345.910,45	145.302.427,35	32,41%	30,70%	0,95%	10,80%	0,48%	5,60%
126	1-ago-12	469.606.827,15	143.274.257,68	32,12%	30,51%	0,95%	10,77%	0,61%	7,09%
127	1-sep-12	465.850.388,28	141.476.162,69	31,83%	30,37%	0,94%	10,73%	0,46%	5,37%
128	1-oct-12	462.076.513,27	139.527.123,44	31,54%	30,20%	0,94%	10,70%	0,57%	6,65%
129	1-nov-12	458.285.121,19	137.867.693,39	31,26%	30,08%	0,93%	10,65%	0,37%	4,37%
130	1-dic-12	454.476.130,73	135.715.274,76	30,97%	29,86%	0,93%	10,63%	0,74%	8,49%
131	1-ene-13	450.774.160,87	132.499.359,35	30,69%	29,39%	0,94%	10,69%	1,57%	17,27%
132	1-feb-13	447.055.007,70	131.024.303,23	30,42%	29,31%	0,93%	10,63%	0,29%	3,43%
133	1-mar-13	443.318.591,46	130.088.549,26	30,14%	29,34%	0,92%	10,55%	-0,12%	-1,48%
134	1-abr-13	439.564.832,02	128.324.835,59	29,87%	29,19%	0,92%	10,51%	0,51%	5,99%
135	1-may-13	435.793.648,89	126.679.256,04	29,60%	29,07%	0,92%	10,47%	0,43%	5,02%
136	1-jun-13	432.004.961,17	124.681.945,12	29,33%	28,86%	0,92%	10,46%	0,71%	8,23%
137	1-jul-13	428.299.061,99	123.171.392,82	29,06%	28,76%	0,91%	10,41%	0,36%	4,20%
138	1-ago-13	424.575.961,25	121.526.496,54	28,80%	28,62%	0,91%	10,38%	0,47%	5,50%
139	1-sep-13	420.835.579,12	120.110.184,13	28,54%	28,54%	0,90%	10,33%	0,29%	3,39%

DEAL 917.000.000,000  
 MEZZ. DECLINN 7,00%  
 MEZZ. STOPS DECLINN 0,75% 6.877.500,00  
 VIDA RESIDUAL DESDE 18-sep-13

1,12

1,16

FECHA	Principal disponible para la amortización	SERIE A		SERIE B		SERIE A		SERIE B	
		PRINCIPAL	VIDA MEDIA	PRINCIPAL	VIDA MEDIA	PRINCIPAL	VIDA MEDIA	PRINCIPAL	VIDA MEDIA
18-abr-02	0,00	898.700.000,00	18.300.000,00	0,00	0,00	0,00	0,00	0,00	0,00
18-may-02	1 0,00	898.700.000,00	18.300.000,00	0,00	0,00	0,00	0,00	0,00	0,00
18-jun-02	1 36.107.473,60	898.700.000,00	18.300.000,00	36.107.473,60	-148.401.716.496,00	0,00	0,00	0,00	0,00
18-jul-02	1 0,00	862.592.526,40	18.300.000,00	0,00	0,00	0,00	0,00	0,00	0,00
18-ago-02	1 0,00	862.592.526,40	18.300.000,00	0,00	0,00	0,00	0,00	0,00	0,00
18-sep-02	1 29.833.636,04	862.592.526,40	18.300.000,00	29.833.636,04	-119.871.549.608,72	0,00	0,00	0,00	0,00
18-oct-02	1 0,00	832.758.890,36	18.300.000,00	0,00	0,00	0,00	0,00	0,00	0,00
18-nov-02	1 0,00	832.758.890,36	18.300.000,00	0,00	0,00	0,00	0,00	0,00	0,00
18-dic-02	1 29.035.485,09	832.758.890,36	18.300.000,00	29.035.485,09	-114.022.349.948,43	0,00	0,00	0,00	0,00
18-ene-03	1 0,00	803.723.405,27	18.300.000,00	0,00	0,00	0,00	0,00	0,00	0,00
18-feb-03	1 0,00	803.723.405,27	18.300.000,00	0,00	0,00	0,00	0,00	0,00	0,00
18-mar-03	1 29.190.037,43	803.723.405,27	18.300.000,00	29.190.037,43	-112.002.173.618,91	0,00	0,00	0,00	0,00
18-abr-03	1 0,00	774.533.367,84	18.300.000,00	0,00	0,00	0,00	0,00	0,00	0,00
18-may-03	1 0,00	774.533.367,84	18.300.000,00	0,00	0,00	0,00	0,00	0,00	0,00
18-jun-03	1 29.263.429,38	774.533.367,84	18.300.000,00	29.263.429,38	-109.591.543.028,10	0,00	0,00	0,00	0,00
18-jul-03	1 0,00	745.269.938,46	18.300.000,00	0,00	0,00	0,00	0,00	0,00	0,00
18-ago-03	1 0,00	745.269.938,46	18.300.000,00	0,00	0,00	0,00	0,00	0,00	0,00
18-sep-03	1 32.876.212,22	745.269.938,46	18.300.000,00	32.876.212,22	-120.096.803.239,66	0,00	0,00	0,00	0,00
18-oct-03	1 0,00	712.393.726,24	18.300.000,00	0,00	0,00	0,00	0,00	0,00	0,00
18-nov-03	1 0,00	712.393.726,24	18.300.000,00	0,00	0,00	0,00	0,00	0,00	0,00
18-dic-03	1 41.374.706,99	712.393.726,24	18.300.000,00	41.374.706,99	-147.376.706.298,38	0,00	0,00	0,00	0,00
18-ene-04	1 0,00	671.019.019,25	18.300.000,00	0,00	0,00	0,00	0,00	0,00	0,00
18-feb-04	1 0,00	671.019.019,25	18.300.000,00	0,00	0,00	0,00	0,00	0,00	0,00
18-mar-04	1 31.587.852,95	671.019.019,25	18.300.000,00	31.587.852,95	-109.641.437.589,45	0,00	0,00	0,00	0,00
18-abr-04	1 0,00	639.431.166,30	18.300.000,00	0,00	0,00	0,00	0,00	0,00	0,00
18-may-04	1 0,00	639.431.166,30	18.300.000,00	0,00	0,00	0,00	0,00	0,00	0,00
18-jun-04	1 30.680.268,96	639.431.166,30	18.300.000,00	30.680.268,96	-103.668.628.815,84	0,00	0,00	0,00	0,00
18-jul-04	1 0,00	608.750.897,34	18.300.000,00	0,00	0,00	0,00	0,00	0,00	0,00
18-ago-04	1 0,00	608.750.897,34	18.300.000,00	0,00	0,00	0,00	0,00	0,00	0,00
18-sep-04	1 54.870.748,74	608.750.897,34	18.300.000,00	54.870.748,74	-180.360.151.108,38	0,00	0,00	0,00	0,00
18-oct-04	1 0,00	553.880.148,60	18.300.000,00	0,00	0,00	0,00	0,00	0,00	0,00
18-nov-04	1 0,00	553.880.148,60	18.300.000,00	0,00	0,00	0,00	0,00	0,00	0,00
18-dic-04	1 28.559.151,21	553.880.148,60	18.300.000,00	28.559.151,21	-91.275.047.267,16	0,00	0,00	0,00	0,00
18-ene-05	1 0,00	525.320.997,39	18.300.000,00	0,00	0,00	0,00	0,00	0,00	0,00
18-feb-05	1 0,00	525.320.997,39	18.300.000,00	0,00	0,00	0,00	0,00	0,00	0,00
18-mar-05	1 30.283.696,66	525.320.997,39	18.300.000,00	30.283.696,66	-94.061.161.825,96	0,00	0,00	0,00	0,00
18-abr-05	1 0,00	495.037.300,73	18.300.000,00	0,00	0,00	0,00	0,00	0,00	0,00
18-may-05	1 0,00	495.037.300,73	18.300.000,00	0,00	0,00	0,00	0,00	0,00	0,00
18-jun-05	1 29.048.557,44	495.037.300,73	18.300.000,00	29.048.557,44	-87.552.352.124,16	0,00	0,00	0,00	0,00
18-jul-05	1 0,00	465.988.743,29	18.300.000,00	0,00	0,00	0,00	0,00	0,00	0,00
18-ago-05	1 0,00	465.988.743,29	18.300.000,00	0,00	0,00	0,00	0,00	0,00	0,00
18-sep-05	1 22.535.818,67	465.988.743,29	18.300.000,00	22.535.818,67	-65.849.662.153,74	0,00	0,00	0,00	0,00
18-oct-05	1 0,00	443.452.924,62	18.300.000,00	0,00	0,00	0,00	0,00	0,00	0,00
18-nov-05	1 0,00	443.452.924,62	18.300.000,00	0,00	0,00	0,00	0,00	0,00	0,00
18-dic-05	1 24.095.783,01	443.452.924,62	18.300.000,00	24.095.783,01	-68.215.161.701,31	0,00	0,00	0,00	0,00
18-ene-06	1 0,00	419.357.141,61	18.300.000,00	0,00	0,00	0,00	0,00	0,00	0,00
18-feb-06	1 0,00	419.357.141,61	18.300.000,00	0,00	0,00	0,00	0,00	0,00	0,00
18-mar-06	1 24.061.405,01	419.357.141,61	18.300.000,00	24.061.405,01	-65.952.311.132,41	0,00	0,00	0,00	0,00
18-abr-06	1 0,00	395.295.736,60	18.300.000,00	0,00	0,00	0,00	0,00	0,00	0,00
18-may-06	1 0,00	395.295.736,60	18.300.000,00	0,00	0,00	0,00	0,00	0,00	0,00
18-jun-06	1 21.216.432,74	395.295.736,60	18.300.000,00	21.216.432,74	-56.202.330.328,26	0,00	0,00	0,00	0,00
18-jul-06	1 0,00	374.079.303,86	18.300.000,00	0,00	0,00	0,00	0,00	0,00	0,00
18-ago-06	1 0,00	374.079.303,86	18.300.000,00	0,00	0,00	0,00	0,00	0,00	0,00
18-sep-06	1 17.573.670,92	374.079.303,86	18.300.000,00	17.573.670,92	-44.935.876.542,44	0,00	0,00	0,00	0,00
18-oct-06	1 0,00	356.505.632,94	18.300.000,00	0,00	0,00	0,00	0,00	0,00	0,00
18-nov-06	1 0,00	356.505.632,94	18.300.000,00	0,00	0,00	0,00	0,00	0,00	0,00
18-dic-06	1 17.049.692,76	356.505.632,94	18.300.000,00	17.049.692,76	-42.044.542.346,16	0,00	0,00	0,00	0,00
18-ene-07	1 0,00	339.455.940,18	18.300.000,00	0,00	0,00	0,00	0,00	0,00	0,00
18-feb-07	1 0,00	339.455.940,18	18.300.000,00	0,00	0,00	0,00	0,00	0,00	0,00
18-mar-07	1 19.123.250,43	339.455.940,18	18.300.000,00	19.123.250,43	-45.436.843.021,68	0,00	0,00	0,00	0,00
18-abr-07	1 0,00	320.332.689,75	18.300.000,00	0,00	0,00	0,00	0,00	0,00	0,00
18-may-07	1 0,00	320.332.689,75	18.300.000,00	0,00	0,00	0,00	0,00	0,00	0,00
18-jun-07	1 14.801.037,48	320.332.689,75	18.300.000,00	14.801.037,48	-33.805.569.604,32	0,00	0,00	0,00	0,00
18-jul-07	1 0,00	305.531.652,27	18.300.000,00	0,00	0,00	0,00	0,00	0,00	0,00
18-ago-07	1 0,00	305.531.652,27	18.300.000,00	0,00	0,00	0,00	0,00	0,00	0,00
18-sep-07	1 13.927.922,83	305.531.652,27	18.300.000,00	13.927.922,83	-30.530.006.843,36	0,00	0,00	0,00	0,00
18-oct-07	1 0,00	291.603.729,44	18.300.000,00	0,00	0,00	0,00	0,00	0,00	0,00
18-nov-07	1 0,00	291.603.729,44	18.300.000,00	0,00	0,00	0,00	0,00	0,00	0,00
18-dic-07	1 9.662.932,61	291.603.729,44	18.300.000,00	9.662.932,61	-20.301.821.413,61	0,00	0,00	0,00	0,00
18-ene-08	1 0,00	281.940.796,83	18.300.000,00	0,00	0,00	0,00	0,00	0,00	0,00
18-feb-08	1 0,00	281.940.796,83	18.300.000,00	0,00	0,00	0,00	0,00	0,00	0,00
18-mar-08	1 15.945.318,28	281.940.796,83	18.300.000,00	15.945.318,28	-32.050.089.742,80	0,00	0,00	0,00	0,00
18-abr-08	1 0,00	265.995.478,55	18.300.000,00	0,00	0,00	0,00	0,00	0,00	0,00
18-may-08	1 0,00	265.995.478,55	18.300.000,00	0,00	0,00	0,00	0,00	0,00	0,00



DEAL 917.000.000,00  
 MEZZ. DECLINN 7,00%  
 MEZZ. STOPS DECLINN 0,75% 6.877.500,00  
 VIDA RESIDUAL DESDE 18-sep-13

1,12

1,16

		SERIE A				SERIE B			
Principal		PRINCIPAL		VIDA		PRINCIPAL		VIDA	
18-jun-08	1	10.558.692,97	265.995.478,55	18.300.000,00	10.166.706,98	-19.499.743.987,46	391.985,99	-751.829.129,00	
18-jul-08	1	0,00	255.828.771,57	17.908.014,01	0,00	0,00	0,00	0,00	0,00
18-ago-08	1	0,00	255.828.771,57	17.908.014,01	0,00	0,00	0,00	0,00	0,00
18-sep-08	1	10.802.628,91	255.828.771,57	17.908.014,01	10.095.914,87	-18.435.140.551,08	706.714,04	-1.290.459.838,58	
18-oct-08	1	0,00	245.732.856,70	17.201.299,97	0,00	0,00	0,00	0,00	0,00
18-nov-08	1	0,00	245.732.856,70	17.201.299,97	0,00	0,00	0,00	0,00	0,00
18-dic-08	1	9.899.176,86	245.732.856,70	17.201.299,97	9.251.567,16	-16.051.469.020,65	647.609,70	-1.123.602.831,45	
18-ene-09	1	0,00	236.481.289,54	16.553.690,27	0,00	0,00	0,00	0,00	0,00
18-feb-09	1	0,00	236.481.289,54	16.553.690,27	0,00	0,00	0,00	0,00	0,00
18-mar-09	1	10.313.264,98	236.481.289,54	16.553.690,27	9.638.565,40	-15.855.440.086,07	674.699,58	-1.109.880.806,03	
18-abr-09	1	0,00	226.842.724,14	15.878.990,69	0,00	0,00	0,00	0,00	0,00
18-may-09	1	0,00	226.842.724,14	15.878.990,69	0,00	0,00	0,00	0,00	0,00
18-jun-09	1	9.130.013,43	226.842.724,14	15.878.990,69	8.532.722,83	-13.251.318.557,75	597.290,60	-927.592.299,04	
18-jul-09	1	0,00	218.310.001,31	15.281.700,09	0,00	0,00	0,00	0,00	0,00
18-ago-09	1	0,00	218.310.001,31	15.281.700,09	0,00	0,00	0,00	0,00	0,00
18-sep-09	1	8.625.752,85	218.310.001,31	15.281.700,09	8.061.451,26	-11.777.780.293,32	564.301,59	-824.444.620,53	
18-oct-09	1	0,00	210.248.550,05	14.717.398,50	0,00	0,00	0,00	0,00	0,00
18-nov-09	1	0,00	210.248.550,05	14.717.398,50	0,00	0,00	0,00	0,00	0,00
18-dic-09	1	10.353.673,36	210.248.550,05	14.717.398,50	9.676.330,24	-13.256.572.432,90	677.343,12	-927.960.070,30	
18-ene-10	1	0,00	200.572.219,80	14.040.055,39	0,00	0,00	0,00	0,00	0,00
18-feb-10	1	0,00	200.572.219,80	14.040.055,39	0,00	0,00	0,00	0,00	0,00
18-mar-10	1	8.788.484,78	200.572.219,80	14.040.055,39	8.213.537,18	-10.513.327.587,29	574.947,60	-735.932.931,11	
18-abr-10	1	0,00	192.358.682,63	13.465.107,78	0,00	0,00	0,00	0,00	0,00
18-may-10	1	0,00	192.358.682,63	13.465.107,78	0,00	0,00	0,00	0,00	0,00
18-jun-10	1	7.938.909,46	192.358.682,63	13.465.107,78	7.419.541,55	-8.814.415.363,07	519.367,91	-617.009.075,41	
18-jul-10	1	0,00	184.939.141,07	12.945.739,88	0,00	0,00	0,00	0,00	0,00
18-ago-10	1	0,00	184.939.141,07	12.945.739,88	0,00	0,00	0,00	0,00	0,00
18-sep-10	1	6.745.532,55	184.939.141,07	12.945.739,88	6.304.236,03	-6.909.442.686,73	441.296,52	-483.660.988,07	
18-oct-10	1	0,00	178.634.905,05	12.504.443,35	0,00	0,00	0,00	0,00	0,00
18-nov-10	1	0,00	178.634.905,05	12.504.443,35	0,00	0,00	0,00	0,00	0,00
18-dic-10	1	6.611.030,30	178.634.905,05	12.504.443,35	6.178.532,99	-6.209.425.655,61	432.497,31	-434.659.795,89	
18-ene-11	1	0,00	172.456.372,06	12.071.946,04	0,00	0,00	0,00	0,00	0,00
18-feb-11	1	0,00	172.456.372,06	12.071.946,04	0,00	0,00	0,00	0,00	0,00
18-mar-11	1	6.653.347,32	172.456.372,06	12.071.946,04	6.218.081,61	-5.689.544.670,84	435.265,71	-398.268.126,96	
18-abr-11	1	0,00	166.238.290,45	11.636.680,33	0,00	0,00	0,00	0,00	0,00
18-may-11	1	0,00	166.238.290,45	11.636.680,33	0,00	0,00	0,00	0,00	0,00
18-jun-11	1	5.991.873,43	166.238.290,45	11.636.680,33	5.599.881,71	-4.608.702.647,56	391.991,72	-322.609.185,33	
18-jul-11	1	0,00	160.638.408,74	11.244.688,61	0,00	0,00	0,00	0,00	0,00
18-ago-11	1	0,00	160.638.408,74	11.244.688,61	0,00	0,00	0,00	0,00	0,00
18-sep-11	1	6.033.613,60	160.638.408,74	11.244.688,61	5.638.891,21	-4.122.029.478,13	394.722,39	-288.542.063,47	
18-oct-11	1	0,00	154.999.517,52	10.849.966,23	0,00	0,00	0,00	0,00	0,00
18-nov-11	1	0,00	154.999.517,52	10.849.966,23	0,00	0,00	0,00	0,00	0,00
18-dic-11	1	6.012.907,26	154.999.517,52	10.849.966,23	5.619.539,50	-3.596.505.277,01	393.367,76	-251.755.369,39	
18-ene-12	1	0,00	149.379.978,03	10.456.598,46	0,00	0,00	0,00	0,00	0,00
18-feb-12	1	0,00	149.379.978,03	10.456.598,46	0,00	0,00	0,00	0,00	0,00
18-mar-12	1	-4.347.894,77	149.379.978,03	10.456.598,46	-4.347.894,77	2.386.994.230,41	0,00	0,00	0,00
18-abr-12	1	0,00	153.727.872,80	10.456.598,46	0,00	0,00	0,00	0,00	0,00
18-may-12	1	0,00	153.727.872,80	10.456.598,46	0,00	0,00	0,00	0,00	0,00
18-jun-12	1	8.144.543,27	153.727.872,80	10.456.598,46	7.896.164,40	-3.608.547.130,43	248.378,87	-113.509.145,34	
18-jul-12	1	0,00	145.831.708,40	10.208.219,59	0,00	0,00	0,00	0,00	0,00
18-ago-12	1	0,00	145.831.708,40	10.208.219,59	0,00	0,00	0,00	0,00	0,00
18-sep-12	1	7.766.097,51	145.831.708,40	10.208.219,59	7.258.035,05	-2.649.182.794,05	508.062,45	-185.442.795,58	
18-oct-12	1	0,00	138.573.673,35	9.700.157,13	0,00	0,00	0,00	0,00	0,00
18-nov-12	1	0,00	138.573.673,35	9.700.157,13	0,00	0,00	0,00	0,00	0,00
18-dic-12	1	7.509.876,11	138.573.673,35	9.700.157,13	7.018.575,80	-1.923.089.769,24	491.300,31	-134.616.283,85	
18-ene-13	1	0,00	131.555.097,55	9.208.856,83	0,00	0,00	0,00	0,00	0,00
18-feb-13	1	0,00	131.555.097,55	9.208.856,83	0,00	0,00	0,00	0,00	0,00
18-mar-13	1	7.147.895,13	131.555.097,55	9.208.856,83	6.680.275,82	-1.229.170.750,69	467.619,31	-86.041.952,55	
18-abr-13	1	0,00	124.874.821,73	8.741.237,52	0,00	0,00	0,00	0,00	0,00
18-may-13	1	0,00	124.874.821,73	8.741.237,52	0,00	0,00	0,00	0,00	0,00
18-jun-13	1	6.911.050,58	124.874.821,73	8.741.237,52	6.458.925,78	-594.221.171,57	452.124,80	-41.595.482,01	
18-jul-13	1	0,00	118.415.895,95	8.289.112,72	0,00	0,00	0,00	0,00	0,00
18-ago-13	1	0,00	118.415.895,95	8.289.112,72	0,00	0,00	0,00	0,00	0,00
18-sep-13	1	6.594.824,54	118.415.895,95	8.289.112,72	6.163.387,42	0,00	431.437,12	0,00	0,00
18-oct-13	1	0,00	112.252.508,53	7.857.675,60	0,00	0,00	0,00	0,00	0,00
18-nov-13	1	0,00	112.252.508,53	7.857.675,60	0,00	0,00	0,00	0,00	0,00
18-dic-13	1	6.375.175,30	112.252.508,53	7.857.675,60	5.958.107,75	542.187.805,46	417.067,54	37.953.146,38	
18-ene-14	1	0,00	106.294.400,78	7.440.608,05	0,00	0,00	0,00	0,00	0,00
18-feb-14	1	0,00	106.294.400,78	7.440.608,05	0,00	0,00	0,00	0,00	0,00
18-mar-14	1	6.070.668,34	106.294.400,78	7.440.608,05	5.673.521,81	1.026.907.447,80	397.146,53	71.883.521,35	
18-abr-14	1	0,00	100.620.878,97	7.043.461,53	0,00	0,00	0,00	0,00	0,00
18-may-14	1	0,00	100.620.878,97	7.043.461,53	0,00	0,00	0,00	0,00	0,00
18-jun-14	1	5.867.441,78	100.620.878,97	7.043.461,53	5.867.441,78	1.601.811.604,59	0,00	0,00	0,00
18-jul-14	1	0,00	94.753.437,19	7.043.461,53	0,00	0,00	0,00	0,00	0,00
18-ago-14	1	0,00	94.753.437,19	7.043.461,53	0,00	0,00	0,00	0,00	0,00
18-sep-14	1	5.518.049,71	94.753.437,19	7.043.461,53	5.518.049,71	2.014.088.145,58	0,00	0,00	0,00
18-oct-14	1	0,00	89.235.387,48	7.043.461,53	0,00	0,00	0,00	0,00	0,00
18-nov-14	1	0,00	89.235.387,48	7.043.461,53	0,00	0,00	0,00	0,00	0,00

DEAL				917.000.000,000				
MEZZ. DECLINN				7,00%				
MEZZ. STOPS DECLINN				0,75%		6.877.500,00		
VIDA RESIDUAL DESDE				18-sep-13				
							1,12	1,16
				<b>SERIE A</b>			<b>SERIE B</b>	
	<b>Principal</b>			<b>PRINCIPAL</b>	<b>VIDA</b>	<b>PRINCIPAL</b>	<b>VIDA</b>	
18-dic-14 1	96.278.849,01	89.235.387,48	7.043.461,53	89.235.387,48	40.691.336.691,03	7.043.461,53	3.211.818.456,70	