



F.T.A. UCI 6

MARIA JOSE HERENCIAS PALOMINO
ANALYST
SANTANDER DE TITULIZACION, S.G.F.T, S.A.
CIUDAD GRUPO SANTANDER
28660 BOADILLA DEL MONTE
marjherencias@gruposantander.com
Tel: 912893300



NAME OF THE FUND:

F.T.A. UCI 6

INFORMATION AT:

QUARTER/SEMESTER:

May 18, 2015

-

August 17, 2015

YEAR:

2015

Acting on behalf of Santander de Titulización S.G.F.T., S.A. as General Manager:

Signature:

IGNACIO ORTEGA GAVARA - GENERAL MANAGER

I. DATA OF THE FUND

Constitution Date	June 19, 2000	Paying Agent	BANCO SANTANDER	
Disbursement Date	June 22, 2000	Negotiation Market	AIAF	
Final Date of Redemption	November 16, 2030	Ratings Agencies	MOODY'S ESPAÑA	
Management Company	SANTANDER DE TITULIZACION, S.G.F.T., S.A.	Rating	Initial	Current
Credit Rights's Seller	UNION DE CREDITOS INMOBILIARIOS	CLASS A	Aaa	Aa3
		CLASS B	A2	A2

II. SECURITIES ISSUED CHARGED TO THE FUND: SECURITISATION BONDS

CLASS PRIORITY ISIN CODE	NUM BONDS	NOMINAL			
			Initial	Current	%Act/In
CLASS A ES0338558002	4.364	Nominal per Bond	100.000,00	7.258,92	
		Total Nominal	436.400.000,00	31.677.926,88	7,26 %
CLASS B ES0338558010	206	Nominal per Bond	100.000,00	22.184,43	
		Total Nominal	20.600.000,00	4.569.992,58	22,18 %

REDEMPTION AND INTEREST OF THE BONDS					
Current			Next		
Payment Date of the Current Period August 17, 2015			Next Payment Date November 16, 2015		
	Redemption of the Bonds	Gross Interest	Interest Rate	Gross Interest Next Coupon	Net Interest Next Coupon
CLASS A	278,53 €	5,45 €	0,2748 %	5,04 €	4,06 €
CLASS B	0,00 €	42,95 €	0,7614 %	42,70 €	34,37 €
Accrued amortisation due not payed	0,00 €				
Scheduled Amortisation	NO				

III. ASSET PURCHASED BY THE FUND: CREDIT RIGHTS

CREDIT RIGHTS	ISSUE DATE	CURRENT DATE
Numbre of CR's	13.139	2.286
CR's Outstanding to be amortised	457.000.004,15	36.247.908,15
CR's Outstanding per Loan to be amortised	34.781,95	15.856,48
Interest Rate	5,00 %	1,61 %

PREPAYMENT RATE	CURRENT SITUATION
Monthly Single Rate	4,16 %
Average Monthly Single Rate	4,28 %
Constant Prepayment Rate from Constitution	11,14 %

CURRENT DELINQUENCY	Up to 1 month	From 1 to 6 months	Greater than 6 months
Debt Due (Principal + Interest)	9.624,10	5.391,44	81.322,27
Debt to be amortised	0,00	0,00	36.169.232,76
Total Debt	9.624,10	5.391,44	36.250.555,03

F.T.A. UCI 6**QUARTERLY BONDS PAYOUT REPORT****2015/08/17****BONDS. PRINCIPAL**

Previous Balance	37.463.424,48 €
Principal Amortised	1.215.504,92 €
Outstanding Balance	36.247.919,56 €
% of Initial Balance	7,93%
Principal accrued and unpaid	0

DATA

Determination Date	2015/08/10
Payment Date	2015/08/17
Last Payment Date	2015/05/18
Number of Days (Act/360)	91
Reference Interest Rate (%)	-0,024%
Next Payment Date	2015/11/16

INTEREST PAID

CLASS A	23.783,80 €
CLASS B	8.847,70 €
Interest accrued and unpaid	0,00 €

RESIDUAL LIFE (YEARS)

	INITIAL	2015/08/17
CLASS A	6,2	0,25
CLASS B	9,8	0,25

F.T.A. UCI 6

QUARTERLY COLLATERAL REPORT

2015/08/17

PRINCIPAL

Previous Balance	37.463.439,55 €
Principal Amortised	1.215.531,40 €
Outstanding Balance	36.247.908,15 €
Number of Credit Rights	2.286
LTV	28,17%

INTEREST

Interest received during relevant period	149.656,32 €
Interest accrued during relevant period	149.735,71 €

PRINCIPAL BALANCE IN ARREARS

	UP to 30 DAYS	30 to 60 DAYS	60 to 90 DAYS	90 to 180 DAYS	> 180 DAYS
Principal Balance in Arrears	8.197,31 €	2.714,21 €	1.599,73 €	300,64 €	65.863,50 €
Interest accrued on Credit Rights in Arrears	1.426,79 €	505,50 €	202,16 €	69,20 €	15.458,77 €
Outstanding Balance	1.347.450,32 €	234.593,84 €	84.424,17 €	8.724,13 €	525.161,94 €
Number of Credit Rights	73	6	3	2	34
% of Outstanding Balance	3,72%	0,65%	0,23%	0,02%	1,45%

TRANSITORY PROPERTIES

Last balance	14.444,53 €
Difference in Actual Period	0,00 €
Current balance	14.444,53 €
Transitory properties CR's number	2

F.T.A. UCI 6

QUARTERLY REPORT - ALLOCATION OF CASH

2015/08/17

TOTAL CASH RECEIVED END OF PERIOD	1.365.382,47 €
CASH RECEIVED - PRINCIPAL	
Amortisation of Credit Rights	1.215.531,40 €
CASH RECEIVED - INTEREST	
Interest received from Credit Rights	149.656,32 €
Interest received under GIC	-1.332,71 €
INCOMES TRANSITORY PROPERTIES	1.527,46 €
OTHERS	0,00 €

TOTAL CASH PAID END OF PERIOD	1.365.382,47 €
ORDINARY EXPENSES	5.421,46 €
MANAGEMENT FEE	10.245,00 €
INTEREST PAID TO CLASS A	23.783,80 €
INTEREST PAID TO CLASS B	8.847,70 €
REDEMPTION PAID CLASS A	1.215.504,92 €
REDEMPTION PAID CLASS B	0,00 €
INTEREST SUBORDINATED LOAN SANTANDER	3.932,18 €
INTEREST SUBORDINATED LOAN UCB	3.932,18 €
ADMINISTRATION FEE	6.000,00 €
VARIABLE FEE	87.715,23 €

TREASURY ACCOUNT STATEMENT	4.570.000,04 €
PRINCIPAL RESERVE FUND	
Previous Balance	4.570.000,04 €
Period utilization	0,00 €
Outstanding Balance	4.570.000,04 €
WITHHOLDING TAXES	0,00 €
ISSUE EXPENSES WITHHELD	0,00 €
OTHERS	0,00 €

F.T.A. UCI 6**CREDIT ENHACEMENT AND SUBORDINATED LOAN****2015/08/17**

CREDIT ENHACEMENT				
CONCEPTS	INITIAL		2015/08/17	
SUBORDINATED ISSUE	95,49 %		12,61%	
PRINCIPAL RESERVE FUND	9.597.000,00 €	2,10%	4.570.000,04 €	12,61%

SUBORDINATED LOANS				
CONCEPTS	INITIAL		2015/08/17	
SUBORDINATED LOAN A SANTANDER				
Total Outstanding Subordinated Loan	5.410.010,46 €		2.285.788,65 €	
Interest Rate	2,650 %		0,61%	
SUBORDINATED LOAN A UCB				
Total Outstanding Subordinated Loan	5.410.010,46 €		2.285.788,65 €	
Interest Rate	2,650 %		0,61%	

F.T.A. UCI 6

DEFINITIONS

DETERMINATION DATE Means the date in which the Gestora will carry out the necessary calculations, on behalf of the Fund, for the distribution of the available funds at this date, according with the Order of Priority of Payments.

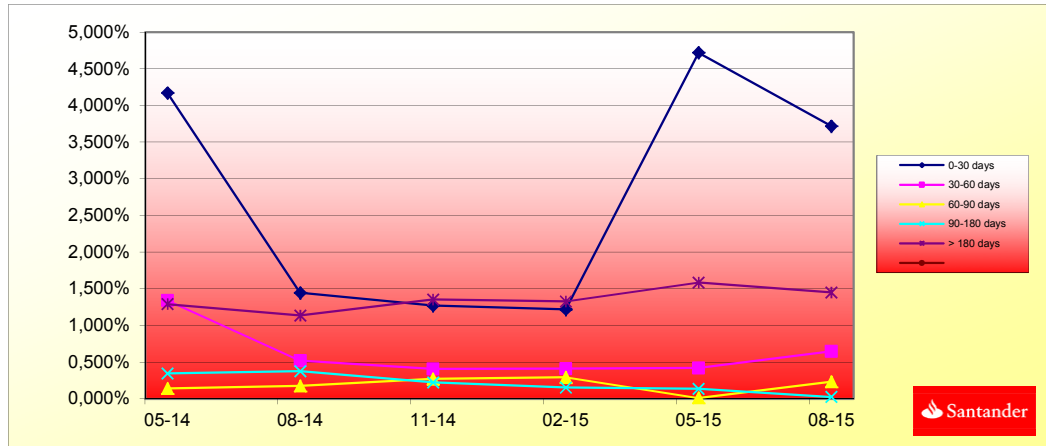
All the information regarding the Assets (Outstanding Balance of the Credit Rights, arrears' tables, transitory properties, stratification tables, etc.) are referred to this mentioned date.

TRANSITORY PROPERTIES Those assets in the balance of the Fund as a consequence of a judicial or non-judicial process.

**FONDO DE TITULIZACIÓN HIPOTECARIA
UCI 6**

HISTORICAL ARREARS REPORT

Data	05-14	08-14	11-14	02-15	05-15	08-15
0-30 days	4,169%	1,444%	1,271%	1,219%	4,720%	3,717%
30-60 days	1,339%	0,519%	0,404%	0,410%	0,420%	0,647%
60-90 days	0,140%	0,176%	0,269%	0,293%	0,011%	0,233%
90-180 days	0,343%	0,374%	0,224%	0,154%	0,137%	0,024%
> 180 days	1,290%	1,134%	1,353%	1,328%	1,584%	1,449%



TRIGGERS

TRIGGERS BONDS

1. IF 1.a) IS HIGHER THAN 1.b) THERE IS NO REDEMPTION OF CLASS B:

1.a) CR's IN ARREARS OVER 90 DAYS	533.886,07 €
1.b) 7% CR's OUTSTANDING BALANCE	2.537.353,57 €

THE CLASS B BONDS ARE ON THE MINIMUM LEVEL PERMITTED

TRIGGERS RESERVE FUND

1. IF 1.a) IS HIGHER THAN 1.b) THERE IS NO REDEMPTION OF RESERVE FUND:

1.a) CR'S IN ARREARS OVER 90 DAYS	N/A
1.b) 3% CR'S OUTSTANDING BALANCE	N/A

2. IF 2.a) IS LOWER THAN 2.b) THERE IS NO REDEMPTION OF RESERVE FUND:

2.a) WEIGHTED AVERAGE RATE CR's	N/A
2.b) WEIGHTED AVERAGE RATE BONDS A AND B + 0,40%	N/A

3. IF 3.a) IS HIGHER THAN 3.b) THERE IS NO REDEMPTION OF RESERVE FUND:

3.a) WRITTE OFF	N/A
3.b) 0,025% INITIAL OUTSTANDING BALANCE CR'S *N/A PAYMENT DATES	N/A

THE RESERVE FUND IS ON THE MINIMUM LEVEL PERMITTED

**FONDO DE TITULIZACIÓN HIPOTECARIA
UCI 6**

L.T.V.

LTV (%)	SALDO VIVO	%	NÚMERO	% PRESTAMOS
LTV (%)	OUTS. BALANC	% OUTSTANDING	LOANS	% LOANS
0,00-9,99	1.016.618,70	3,1608%	155	11,4054%
10,00 - 19,99	4.168.155,29	12,9594%	299	22,0015%
20,00 - 29,99	6.136.334,62	19,0787%	243	17,8808%
30,00 - 39,99	9.819.380,66	30,5298%	342	25,1656%
40,00 - 49,99	10.242.977,28	31,8468%	301	22,1486%
50,00 - 59,99	599.309,12	1,8633%	15	1,1038%
60,00 - 66,46	180.511,69	0,5612%	4	0,2943%

F.T.A.: UCI 6

Counterpart

Agreement	Counterpart	Rating Agency	Minimum rating	Current rating
Treasury account	Banco Santander S.A.	Moody's	S/T: P-1	P-2

COUNTERPARTY DOES NOT HAVE THE MINIMUM RATING REQUIRED. TREASURY ACCOUNT HAS BEEN TRANSFERRED TO A COUNTERPARTY WITH MINIMUM RATING REQUIRED.

UCI 6

Date	Real Outstanding	0,98%	Remaining at the end of the month	Average Single monthly mortality	CPR	Monthly Single monthly mortality	CPR	
		Prepayment vector						
							4,28%	
	457.000.004,2		100,00%	100,00%				
julio-00	456.040.916,0	453.128.783,7	99,02%	99,36%	0,64%	7,40%	0,64%	7,40%
agosto-00	455.077.826,1	448.828.507,4	98,05%	98,63%	0,69%	7,96%	0,74%	8,52%
septiembre-00	454.110.683,2	445.856.137,4	97,09%	98,18%	0,61%	7,08%	0,45%	5,28%
octubre-00	453.139.470,2	443.087.649,1	96,14%	97,78%	0,56%	6,51%	0,41%	4,79%
noviembre-00	452.164.170,0	439.171.130,0	95,20%	97,13%	0,58%	6,76%	0,67%	7,75%
diciembre-00	451.184.765,4	436.191.628,6	94,26%	96,68%	0,56%	6,54%	0,46%	5,41%
enero-01	450.201.239,2	431.891.179,4	93,34%	95,93%	0,59%	6,87%	0,77%	8,85%
febrero-01	449.213.573,9	428.312.545,1	92,43%	95,35%	0,59%	6,90%	0,61%	7,09%
marzo-01	448.221.752,3	423.886.429,0	91,52%	94,57%	0,62%	7,17%	0,81%	9,35%
abril-01	447.225.756,7	418.072.840,2	90,62%	93,48%	0,67%	7,77%	1,15%	12,98%
mayo-01	446.225.569,6	414.462.703,6	89,74%	92,88%	0,67%	7,74%	0,64%	7,43%
junio-01	445.221.173,5	410.239.612,2	88,86%	92,14%	0,68%	7,86%	0,80%	9,14%
julio-01	444.212.550,4	405.614.216,5	87,99%	91,31%	0,70%	8,05%	0,90%	10,31%
agosto-01	443.199.682,8	400.238.316,5	87,12%	90,31%	0,73%	8,37%	1,10%	12,43%
septiembre-01	442.182.552,7	395.859.610,6	86,27%	89,52%	0,74%	8,47%	0,87%	9,92%
octubre-01	441.161.142,1	391.241.620,9	85,43%	88,68%	0,75%	8,61%	0,94%	10,69%
noviembre-01	440.135.433,2	385.838.182,2	84,59%	87,66%	0,77%	8,88%	1,15%	12,97%
diciembre-01	439.105.407,7	380.748.736,1	83,76%	86,71%	0,79%	9,07%	1,09%	12,30%
enero-02	438.071.047,5	375.271.007,5	82,94%	85,66%	0,81%	9,31%	1,21%	13,55%
febrero-02	437.032.334,3	370.042.745,41	82,13%	84,67%	0,83%	9,50%	1,16%	13,05%
marzo-02	435.989.249,9	364.551.475,1	81,32%	83,61%	0,85%	9,72%	1,25%	13,99%
abril-02	434.941.775,9	359.297.389,6	80,53%	82,61%	0,86%	9,90%	1,20%	13,53%
mayo-02	433.889.893,8	353.940.719,2	79,74%	81,57%	0,88%	10,08%	1,25%	14,03%
junio-02	432.833.585,0	347.793.248,4	78,96%	80,35%	0,91%	10,36%	1,50%	16,56%
julio-02	431.774.155,1	342.309.563,3	78,18%	79,28%	0,92%	10,55%	1,34%	14,90%
agosto-02	430.710.266,9	336.877.719,2	77,42%	78,21%	0,94%	10,72%	1,34%	14,98%
septiembre-02	429.641.901,5	332.638.740,1	76,66%	77,42%	0,94%	10,75%	1,01%	11,50%
octubre-02	428.569.040,0	328.113.486,4	75,91%	76,56%	0,95%	10,82%	1,11%	12,57%
noviembre-02	427.491.663,6	324.171.387,7	75,16%	75,83%	0,95%	10,82%	0,95%	10,85%
diciembre-02	426.409.753,2	318.147.224,8	74,43%	74,61%	0,97%	11,06%	1,61%	17,69%
enero-03	425.324.271,8	313.840.105,4	73,70%	73,79%	0,98%	11,10%	1,10%	12,45%
febrero-03	424.234.222,3	308.434.679,1	72,98%	72,70%	0,99%	11,27%	1,47%	16,28%
marzo-03	423.139.585,5	302.052.495,6	72,26%	71,38%	1,02%	11,54%	1,82%	19,74%
abril-03	422.040.342,2	296.379.448,4	71,55%	70,23%	1,03%	11,73%	1,62%	17,82%
mayo-03	420.936.472,8	290.615.261,4	70,85%	69,04%	1,05%	11,93%	1,69%	18,47%
junio-03	419.827.958,0	284.645.570,9	70,16%	67,80%	1,07%	12,15%	1,80%	19,54%
julio-03	418.717.512,0	276.839.156,1	69,47%	66,12%	1,11%	12,56%	2,48%	26,06%

Date	Real Outstanding	0,98%	Remaining at the end of the month	Average Single monthly mortality	CPR	Monthly Single monthly mortality	CPR	
		Prepayment vector						
							4,28%	
agosto-03	417.602.392,7	267.980.363,8	68,79%	64,17%	1,16%	13,07%	2,94%	30,11%
septiembre-03	416.482.580,7	261.911.338,7	68,12%	62,89%	1,18%	13,30%	2,00%	21,55%
octubre-03	415.358.056,2	254.035.675,0	67,45%	61,16%	1,22%	13,71%	2,74%	28,39%
noviembre-03	414.228.799,2	246.480.453,8	66,79%	59,50%	1,26%	14,10%	2,71%	28,08%
diciembre-03	413.094.790,0	239.591.881,9	66,13%	58,00%	1,29%	14,41%	2,53%	26,45%
enero-04	411.956.645,0	232.532.574,9	65,49%	56,45%	1,32%	14,75%	2,68%	27,80%
febrero-04	410.813.710,2	227.850.234,3	64,84%	55,46%	1,33%	14,85%	1,74%	19,00%
marzo-04	409.665.965,6	222.469.311,6	64,21%	54,31%	1,35%	15,03%	2,09%	22,37%
abril-04	408.513.391,0	217.788.596,9	63,58%	53,31%	1,36%	15,13%	1,83%	19,86%
mayo-04	407.355.965,9	211.304.679,0	62,96%	51,87%	1,39%	15,43%	2,70%	28,01%
junio-04	406.193.669,9	206.609.961,4	62,34%	50,86%	1,40%	15,55%	1,94%	20,97%
julio-04	405.030.380,6	201.387.274,7	61,73%	49,72%	1,42%	15,73%	2,25%	23,88%
agosto-04	403.862.195,8	196.432.862,3	61,12%	48,64%	1,43%	15,88%	2,18%	23,22%
septiembre-04	402.689.094,9	193.264.517,0	60,53%	47,99%	1,43%	15,86%	1,33%	14,80%

Date	Real Outstanding	0,98%	Remaining at the end of the month	Average Single monthly mortality	CPR	Monthly Single monthly mortality	CPR	
		Prepayment vector						
							4,28%	
octubre-04	401.511.057,2	189.723.138,8	59,93%	47,25%	1,43%	15,89%	1,54%	17,04%
noviembre-04	400.328.061,9	186.369.970,8	59,35%	46,55%	1,43%	15,90%	1,48%	16,35%
diciembre-04	399.140.088,2	182.504.224,3	58,76%	45,72%	1,44%	15,96%	1,78%	19,42%
enero-05	397.949.157,2	178.392.645,5	58,19%	44,83%	1,45%	16,06%	1,96%	21,15%
febrero-05	396.753.214,3	174.837.087,6	57,62%	44,07%	1,45%	16,10%	1,70%	18,57%
marzo-05	395.552.238,6	171.903.827,8	57,05%	43,46%	1,45%	16,09%	1,38%	15,35%
abril-05	394.346.208,7	168.239.247,0	56,49%	42,66%	1,46%	16,16%	1,83%	19,90%
mayo-05	393.135.103,5	164.202.790,5	55,94%	41,77%	1,47%	16,27%	2,10%	22,47%
junio-05	391.918.901,5	160.739.959,7	55,39%	41,01%	1,47%	16,33%	1,81%	19,63%
julio-05	390.701.860,8	156.628.073,3	54,85%	40,09%	1,49%	16,46%	2,25%	23,94%
agosto-05	389.479.698,4	152.963.373,2	54,31%	39,27%	1,50%	16,55%	2,03%	21,85%
septiembre-05	388.252.392,8	150.814.394,0	53,78%	38,84%	1,49%	16,48%	1,09%	12,36%
octubre-05	387.019.922,2	147.200.821,1	53,25%	38,03%	1,50%	16,58%	2,09%	22,34%
noviembre-05	385.782.265,0	144.039.594,3	52,73%	37,34%	1,50%	16,63%	1,83%	19,91%
diciembre-05	384.539.399,3	141.159.654,6	52,22%	36,71%	1,51%	16,66%	1,68%	18,42%
enero-06	383.297.061,2	138.445.593,2	51,70%	36,12%	1,51%	16,67%	1,60%	17,65%
febrero-06	382.049.494,9	135.044.659,8	51,20%	35,35%	1,52%	16,77%	2,14%	22,84%
marzo-06	380.796.678,4	132.300.064,1	50,70%	34,74%	1,52%	16,79%	1,71%	18,70%
abril-06	379.538.589,7	129.075.221,0	50,20%	34,01%	1,53%	16,88%	2,11%	22,62%
mayo-06	378.275.206,6	126.639.279,5	49,71%	33,48%	1,53%	16,89%	1,56%	17,19%
junio-06	377.006.506,7	124.003.623,7	49,22%	32,89%	1,53%	16,92%	1,75%	19,11%
julio-06	375.739.564,1	120.891.562,8	48,74%	32,17%	1,54%	17,01%	2,18%	23,25%
agosto-06	374.467.289,9	118.426.272,7	48,26%	31,63%	1,54%	17,03%	1,71%	18,66%
septiembre-06	373.189.661,5	116.764.763,8	47,79%	31,29%	1,54%	16,97%	1,07%	12,06%
octubre-06	371.906.656,4	114.821.542,6	47,32%	30,87%	1,53%	16,94%	1,32%	14,79%
noviembre-06	370.618.252,0	112.351.017,3	46,86%	30,31%	1,54%	16,97%	1,81%	19,70%
diciembre-06	369.324.425,6	109.914.875,8	46,40%	29,76%	1,54%	17,01%	1,83%	19,84%
enero-07	368.030.272,9	107.970.795,4	45,94%	29,34%	1,54%	17,00%	1,42%	15,80%
febrero-07	366.730.674,0	106.255.615,9	45,49%	28,97%	1,54%	16,96%	1,24%	13,90%
marzo-07	365.425.606,0	105.031.432,5	45,05%	28,74%	1,53%	16,87%	0,80%	9,18%
abril-07	364.115.045,8	103.282.607,4	44,61%	28,37%	1,52%	16,84%	1,31%	14,65%
mayo-07	362.798.970,3	101.544.012,5	44,17%	27,99%	1,52%	16,81%	1,33%	14,81%
junio-07	361.477.356,4	100.393.799,9	43,74%	27,77%	1,51%	16,72%	0,77%	8,87%
julio-07	360.160.610,4	98.783.980,9	43,31%	27,43%	1,51%	16,69%	1,24%	13,95%
agosto-07	358.838.323,2	97.421.136,6	42,88%	27,15%	1,50%	16,63%	1,02%	11,54%
septiembre-07	357.510.471,3	96.000.767,8	42,46%	26,85%	1,50%	16,59%	1,09%	12,34%
octubre-07	356.177.031,4	94.815.177,8	42,05%	26,62%	1,49%	16,51%	0,87%	9,90%
noviembre-07	354.837.980,0	93.668.706,7	41,64%	26,40%	1,49%	16,44%	0,84%	9,59%
diciembre-07	353.493.293,3	92.475.277,8	41,23%	26,16%	1,48%	16,37%	0,90%	10,27%
enero-08	352.150.345,0	91.072.415,0	40,82%	25,86%	1,48%	16,33%	1,14%	12,87%

Date	Real Outstanding	0,98%	Remaining at the end of the month	Average Single monthly mortality	CPR	Monthly Single monthly mortality	CPR	
		Prepayment vector						
							4,28%	
febrero-08	350.801.745,0	90.178.994,2	40,42%	25,71%	1,47%	16,24%	0,60%	6,97%
marzo-08	349.447.469,8	88.957.504,4	40,03%	25,46%	1,46%	16,18%	0,97%	11,06%
abril-08	348.087.495,2	87.358.089,4	39,64%	25,10%	1,46%	16,18%	1,41%	15,71%
mayo-08	346.721.797,5	85.556.925,8	39,25%	24,68%	1,46%	16,20%	1,68%	18,36%
junio-08	345.350.352,4	84.237.854,7	38,86%	24,39%	1,46%	16,17%	1,15%	12,97%
julio-08	343.982.411,4	83.150.819,9	38,48%	24,17%	1,45%	16,11%	0,90%	10,26%
agosto-08	342.608.713,7	82.088.148,7	38,10%	23,96%	1,45%	16,05%	0,88%	10,09%
septiembre-08	341.229.234,9	81.307.334,0	37,73%	23,83%	1,44%	15,96%	0,55%	6,41%
octubre-08	339.843.950,8	80.607.800,6	37,36%	23,72%	1,43%	15,86%	0,46%	5,34%
noviembre-08	338.452.837,1	79.913.268,5	37,00%	23,61%	1,42%	15,76%	0,45%	5,32%
diciembre-08	337.055.869,0	79.110.607,2	36,63%	23,47%	1,41%	15,68%	0,59%	6,90%
enero-09	335.667.288,9	78.397.347,6	36,27%	23,36%	1,40%	15,59%	0,49%	5,74%
febrero-09	334.272.865,3	77.963.628,1	35,92%	23,32%	1,39%	15,46%	0,14%	1,65%
marzo-09	332.872.573,4	77.088.351,3	35,57%	23,16%	1,38%	15,40%	0,71%	8,16%
abril-09	331.466.388,7	76.151.863,4	35,22%	22,97%	1,38%	15,34%	0,80%	9,14%
mayo-09	330.054.286,3	75.640.093,4	34,87%	22,92%	1,37%	15,23%	0,25%	2,92%
junio-09	328.636.241,2	74.782.635,8	34,53%	22,76%	1,36%	15,17%	0,71%	8,16%
julio-09	327.233.118,9	74.079.720,5	34,19%	22,64%	1,35%	15,09%	0,52%	6,01%
agosto-09	325.824.091,8	73.119.413,8	33,86%	22,44%	1,35%	15,04%	0,87%	9,95%
septiembre-09	324.409.135,0	72.373.766,9	33,53%	22,31%	1,34%	14,97%	0,59%	6,83%
octubre-09	322.988.223,6	71.540.102,4	33,20%	22,15%	1,34%	14,91%	0,72%	8,27%
noviembre-09	321.561.332,5	70.843.524,9	32,87%	22,03%	1,33%	14,84%	0,53%	6,23%
diciembre-09	320.128.436,6	70.075.071,7	32,55%	21,89%	1,32%	14,78%	0,64%	7,44%
enero-10	318.700.982,4	69.407.998,1	32,23%	21,78%	1,32%	14,70%	0,51%	5,93%
febrero-10	317.267.521,0	68.883.690,5	31,92%	21,71%	1,31%	14,61%	0,31%	3,62%
marzo-10	315.828.027,1	68.079.926,9	31,60%	21,56%	1,30%	14,56%	0,72%	8,27%
abril-10	314.382.475,4	67.331.944,8	31,29%	21,42%	1,30%	14,50%	0,64%	7,46%
mayo-10	312.930.840,2	66.681.412,3	30,99%	21,31%	1,29%	14,44%	0,51%	5,91%
junio-10	311.473.096,1	65.850.842,7	30,68%	21,14%	1,29%	14,39%	0,78%	9,01%
julio-10	310.020.928,4	65.170.200,7	30,38%	21,02%	1,28%	14,33%	0,57%	6,63%
agosto-10	308.562.649,5	64.720.129,2	30,09%	20,97%	1,27%	14,24%	0,22%	2,62%
septiembre-10	307.098.233,7	64.222.840,5	29,79%	20,91%	1,26%	14,16%	0,30%	3,49%
octubre-10	305.627.655,1	63.659.901,9	29,50%	20,83%	1,26%	14,09%	0,40%	4,69%
noviembre-10	304.150.887,9	63.183.559,8	29,21%	20,77%	1,25%	14,00%	0,27%	3,15%
diciembre-10	302.667.905,9	62.574.931,8	28,92%	20,67%	1,24%	13,94%	0,48%	5,59%
enero-11	301.201.153,4	61.684.530,3	28,64%	20,48%	1,24%	13,91%	0,94%	10,75%
febrero-11	299.728.228,4	61.178.183,47	28,36%	20,41%	1,23%	13,84%	0,33%	3,93%
marzo-11	298.249.104,8	60.526.819,9	28,08%	20,29%	1,23%	13,79%	0,57%	6,68%
abril-11	296.763.756,6	60.037.298,6	27,81%	20,23%	1,22%	13,71%	0,31%	3,68%
mayo-11	295.272.157,5	59.570.470,7	27,53%	20,17%	1,21%	13,64%	0,28%	3,27%
junio-11	293.774.281,3	59.035.458,4	27,26%	20,10%	1,21%	13,57%	0,39%	4,61%

Date	Real Outstanding	0,98%	Remaining at the end of the month	Average Single monthly mortality	CPR	Monthly Single monthly mortality	CPR	
		Prepayment vector						
							4,28%	
julio-11	292.290.634,9	58.463.062,2	27,00%	20,00%	1,20%	13,52%	0,47%	5,46%
agosto-11	290.800.744,9	57.974.898,2	26,73%	19,94%	1,20%	13,45%	0,33%	3,85%
septiembre-11	289.304.584,9	57.499.936,9	26,47%	19,88%	1,19%	13,38%	0,31%	3,61%
octubre-11	287.802.128,6	56.961.821,9	26,21%	19,79%	1,18%	13,32%	0,42%	4,91%
noviembre-11	286.293.349,4	56.377.271,8	25,96%	19,69%	1,18%	13,27%	0,50%	5,89%
diciembre-11	284.778.220,8	55.786.401,7	25,70%	19,59%	1,17%	13,22%	0,52%	6,08%
enero-12	283.280.151,5	55.100.114,3	25,45%	19,45%	1,17%	13,18%	0,71%	8,17%
febrero-12	281.775.777,9	54.677.183,7	25,20%	19,40%	1,16%	13,11%	0,24%	2,82%
marzo-12	280.265.073,3	54.284.122,3	24,95%	19,37%	1,16%	13,04%	0,18%	2,18%
abril-12	278.748.011,2	53.747.585,9	24,71%	19,28%	1,15%	12,99%	0,45%	5,26%
mayo-12	277.224.564,7	53.349.080,2	24,47%	19,24%	1,15%	12,92%	0,20%	2,33%
junio-12	275.694.707,1	52.790.130,2	24,23%	19,15%	1,14%	12,87%	0,50%	5,82%
julio-12	274.190.230,1	52.297.273,1	23,99%	19,07%	1,14%	12,81%	0,39%	4,58%
agosto-12	272.679.421,7	51.801.946,8	23,75%	19,00%	1,13%	12,76%	0,40%	4,68%
septiembre-12	271.162.255,4	51.328.311,8	23,52%	18,93%	1,13%	12,70%	0,36%	4,23%
octubre-12	269.638.704,2	50.833.065,7	23,29%	18,85%	1,12%	12,65%	0,41%	4,76%
noviembre-12	268.108.741,5	50.318.615,1	23,06%	18,77%	1,12%	12,61%	0,45%	5,24%
diciembre-12	266.572.340,2	49.798.821,6	22,84%	18,68%	1,11%	12,56%	0,46%	5,41%
enero-13	265.051.533,3	49.234.420,4	22,61%	18,58%	1,11%	12,52%	0,57%	6,59%
febrero-13	263.524.326,2	48.797.974,1	22,39%	18,52%	1,10%	12,47%	0,31%	3,68%
marzo-13	261.990.692,2	48.327.204,1	22,17%	18,45%	1,10%	12,42%	0,39%	4,52%
abril-13	260.450.604,2	47.903.838,1	21,96%	18,39%	1,09%	12,36%	0,29%	3,42%
mayo-13	258.904.034,9	47.487.232,9	21,74%	18,34%	1,09%	12,30%	0,28%	3,28%
junio-13	257.350.957,2	46.965.860,9	21,53%	18,25%	1,08%	12,26%	0,50%	5,85%
julio-13	255.807.272,4	46.570.982,4	21,32%	18,21%	1,08%	12,21%	0,24%	2,87%
agosto-13	254.257.091,4	46.100.287,5	21,11%	18,13%	1,07%	12,16%	0,41%	4,78%
septiembre-13	252.700.386,6	45.651.534,8	20,90%	18,07%	1,07%	12,12%	0,36%	4,27%
octubre-13	251.137.130,8	45.269.836,5	20,70%	18,03%	1,07%	12,06%	0,22%	2,59%
noviembre-13	249.567.296,2	44.858.155,5	20,49%	17,97%	1,06%	12,01%	0,29%	3,38%
diciembre-13	247.990.855,2	44.408.974,2	20,29%	17,91%	1,06%	11,96%	0,37%	4,37%
enero-14	246.475.622,5	43.974.762,1	20,09%	17,84%	1,05%	11,92%	0,37%	4,34%
febrero-14	244.954.013,2	43.542.838,8	19,90%	17,78%	1,05%	11,87%	0,37%	4,32%
marzo-14	243.426.000,5	43.171.929,6	19,70%	17,74%	1,04%	11,82%	0,23%	2,72%
abril-14	241.891.557,4	42.752.252,7	19,51%	17,67%	1,04%	11,78%	0,34%	4,05%
mayo-14	240.350.656,8	42.364.514,9	19,32%	17,63%	1,03%	11,73%	0,27%	3,21%
junio-14	238.803.271,6	41.902.637,4	19,13%	17,55%	1,03%	11,69%	0,45%	5,26%
julio-14	237.310.144,8	41.507.441,1	18,94%	17,49%	1,03%	11,64%	0,32%	3,77%
agosto-14	235.810.734,4	41.056.771,4	18,76%	17,41%	1,02%	11,61%	0,46%	5,35%
septiembre-14	234.305.014,0	40.680.622,5	18,57%	17,36%	1,02%	11,56%	0,28%	3,30%
octubre-14	232.792.957,0	40.317.316,4	18,39%	17,32%	1,01%	11,51%	0,25%	2,95%
noviembre-14	231.274.536,8	39.850.220,8	18,21%	17,23%	1,01%	11,48%	0,51%	5,95%

Date	Real Outstanding		0,98%	Remaining at the end of the month	Average Single monthly mortality	CPR	Monthly Single monthly mortality	CPR
		Prepayment vector						
								4,28%
diciembre-14	229.749.726,5	39.425.066,9	18,03%	17,16%	1,01%	11,45%	0,41%	4,81%
enero-15	228.238.152,7	38.965.961,0	17,85%	17,07%	1,01%	11,42%	0,51%	5,95%
febrero-15	226.720.217,6	38.583.206,8	17,68%	17,02%	1,00%	11,37%	0,32%	3,77%
marzo-15	225.195.894,5	38.192.736,2	17,51%	16,96%	1,00%	11,33%	0,34%	4,03%
abril-15	223.665.156,6	37.800.337,5	17,33%	16,90%	0,99%	11,29%	0,35%	4,12%
mayo-15	222.127.976,8	37.463.439,6	17,17%	16,87%	0,99%	11,25%	0,21%	2,44%
junio-15	220.584.328,1	37.053.445,7	17,00%	16,80%	0,99%	11,21%	0,40%	4,72%
julio-15	219.046.868,8	36.634.721,5	16,83%	16,72%	0,98%	11,18%	0,44%	5,11%
agosto-15	217.502.939,3	36.247.908,2	16,67%	16,67%	0,98%	11,14%	0,35%	4,16%

UCI 6

DEAL 457.000.000
 MEZZ. DECLINN 8,80%
 MEZZ. STOPS DECLINN 1,00%
 VIDA RESIDUAL DESDE 09/08/2015

FECHA	PRINCIPAL AVAILABLE	SENIOR NOTES	MEZZANIE NOTES	SERIE A PRINCIPAL	0,25		
					VIDA MEDIA	SERIE B PRINCIPAL	VIDA MEDIA
08/07/2000		436.400.000,00	20.600.000,00				
08/08/2000	1	0	436.400.000,00	0	0	0	0
08/09/2000	1	0	436.400.000,00	0	0	0	0
08/10/2000	1	0	436.400.000,00	0	0	0	0
08/11/2000	1	26.555.156	436.400.000,00	26.555.156	-143.052.626.717	0	0
08/12/2000	1	0	409.844.843,75	0	0	0	0
08/01/2001	1	0	409.844.843,75	0	0	0	0
08/02/2001	1	15.254.680	409.844.843,75	15.254.680	-80.773.529.186	0	0
09/03/2001	1	0	394.590.164,02	0	0	0	0
09/04/2001	1	0	394.590.164,02	0	0	0	0
09/05/2001	1	14.764.911	394.590.164,02	14.764.911	-76.851.359.594	0	0
09/06/2001	1	0	379.825.253,43	0	0	0	0
09/07/2001	1	0	379.825.253,43	0	0	0	0
09/08/2001	1	14.290.165	379.825.253,43	14.290.165	-73.065.612.414	0	0
09/09/2001	1	0	365.535.088,67	0	0	0	0
09/10/2001	1	0	365.535.088,67	0	0	0	0
09/11/2001	1	13.829.992	365.535.088,67	13.829.992	-69.440.390.348	0	0
09/12/2001	1	0	351.705.096,57	0	0	0	0
09/01/2002	1	0	351.705.096,57	0	0	0	0
09/02/2002	1	13.383.956	351.705.096,57	13.383.956	-65.969.518.040	0	0
09/03/2002	1	0	338.321.140,79	0	0	0	0
09/04/2002	1	0	338.321.140,79	0	0	0	0
09/05/2002	1	12.951.632	338.321.140,79	12.951.632	-62.685.898.312	0	0
09/06/2002	1	0	325.369.508,91	0	0	0	0
09/07/2002	1	0	325.369.508,91	0	0	0	0
09/08/2002	1	12.530.554	325.369.508,91	12.530.554	-59.495.071.700	0	0
09/09/2002	1	0	312.838.954,63	0	0	0	0
09/10/2002	1	0	312.838.954,63	0	0	0	0
09/11/2002	1	12.123.524	312.838.954,63	12.123.524	-56.447.127.029	0	0
09/12/2002	1	0	300.715.430,79	0	0	0	0
09/01/2003	1	0	300.715.430,79	0	0	0	0
09/02/2003	1	11.728.618	300.715.430,79	11.728.618	-53.529.413.346	0	0
09/03/2003	1	0	288.986.812,61	0	0	0	0
09/04/2003	1	0	288.986.812,61	0	0	0	0
09/05/2003	1	11.346.647	288.986.812,61	11.346.647	-50.776.244.682	0	0
09/06/2003	1	0	277.640.165,76	0	0	0	0
09/07/2003	1	0	277.640.165,76	0	0	0	0
09/08/2003	1	10.973.407	277.640.165,76	10.973.407	-48.096.444.408	0	0
09/09/2003	1	0	266.666.758,41	0	0	0	0
09/10/2003	1	0	266.666.758,41	0	0	0	0
09/11/2003	1	10.613.681	266.666.758,41	10.613.681	-45.543.303.362	0	0
09/12/2003	1	0	256.053.077,83	0	0	0	0
09/01/2004	1	0	256.053.077,83	0	0	0	0
09/02/2004	1	10.266.115	256.053.077,83	10.266.115	-43.107.417.088	0	0
08/03/2004	1	0	245.786.962,78	0	0	0	0
08/04/2004	1	0	245.786.962,78	0	0	0	0
08/05/2004	1	9.929.737	245.786.962,78	9.929.737	-40.811.220.949	0	0
08/06/2004	1	0	235.857.225,32	0	0	0	0
08/07/2004	1	0	235.857.225,32	0	0	0	0
08/08/2004	1	9.599.410	235.857.225,32	8.965.851	-36.024.788.919	633.559	-2.545.640.266
08/09/2004	1	0	226.891.374,42	0	0	0	0
08/10/2004	1	0	226.891.374,42	0	0	0	0
08/11/2004	1	9.281.833	226.891.374,42	8.531.096	-33.493.084.444	750.736	-2.947.391.431

FECHA		PRINCIPAL AVAILABLE	SENIOR NOTES	MEZZANIE NOTES	SERIE A PRINCIPAL	VIDA MEDIA	SERIE B PRINCIPAL	VIDA MEDIA
08/12/2004	1	0	218.360.278,03	19.215.704,47	0	0	0	0
08/01/2005	1	0	218.360.278,03	19.215.704,47	0	0	0	0
08/02/2005	1	8.974.115	218.360.278,03	19.215.704,47	8.248.267	-31.623.855.911	725.848	-2.782.899.320
09/03/2005	1	0	210.112.010,97	18.489.856,97	0	0	0	0
09/04/2005	1	0	210.112.010,97	18.489.856,97	0	0	0	0
09/05/2005	1	8.677.189	210.112.010,97	18.489.856,97	7.975.358	-29.859.739.902	701.831	-2.627.657.111
09/06/2005	1	0	202.136.653,09	17.788.025,47	0	0	0	0
09/07/2005	1	0	202.136.653,09	17.788.025,47	0	0	0	0
09/08/2005	1	8.386.000	202.136.653,09	17.788.025,47	7.707.720	-28.148.594.732	678.279	-2.477.076.336
09/09/2005	1	0	194.428.932,73	17.109.746,08	0	0	0	0
09/10/2005	1	0	194.428.932,73	17.109.746,08	0	0	0	0
09/11/2005	1	8.106.317	194.428.932,73	17.109.746,08	7.450.659	-26.524.344.965	655.658	-2.334.142.357
09/12/2005	1	0	186.978.274,04	16.454.088,12	0	0	0	0
09/01/2006	1	0	186.978.274,04	16.454.088,12	0	0	0	0
09/02/2006	1	7.831.739	186.978.274,04	16.454.088,12	7.198.290	-24.963.668.046	633.449	-2.196.802.788
09/03/2006	1	0	179.779.984,52	15.820.638,64	0	0	0	0
09/04/2006	1	0	179.779.984,52	15.820.638,64	0	0	0	0
09/05/2006	1	7.568.824	179.779.984,52	15.820.638,64	6.956.639	-23.506.484.806	612.184	-2.068.570.663
09/06/2006	1	0	172.823.345,04	15.208.454,36	0	0	0	0
09/07/2006	1	0	172.823.345,04	15.208.454,36	0	0	0	0
09/08/2006	1	7.310.170	172.823.345,04	15.208.454,36	6.718.906	-22.085.045.031	591.264	-1.943.483.963
09/09/2006	1	0	166.104.438,73	14.617.190,61	0	0	0	0
09/10/2006	1	0	166.104.438,73	14.617.190,61	0	0	0	0
09/11/2006	1	7.063.199	166.104.438,73	14.617.190,61	6.491.911	-20.741.656.594	571.288	-1.825.265.780
09/12/2006	1	0	159.612.527,43	14.045.902,41	0	0	0	0
09/01/2007	1	0	159.612.527,43	14.045.902,41	0	0	0	0
09/02/2007	1	6.822.678	159.612.527,43	14.045.902,41	6.270.843	-19.458.426.884	551.834	-1.712.341.566
09/03/2007	1	0	153.341.684,09	13.494.068,20	0	0	0	0
09/04/2007	1	0	153.341.684,09	13.494.068,20	0	0	0	0
09/05/2007	1	6.592.130	153.341.684,09	13.494.068,20	6.058.943	-18.261.653.939	533.187	-1.607.025.547
09/06/2007	1	0	147.282.741,18	12.960.881,22	0	0	0	0
09/07/2007	1	0	147.282.741,18	12.960.881,22	0	0	0	0
09/08/2007	1	6.362.145	147.282.741,18	12.960.881,22	5.847.560	-17.086.569.447	514.585	-1.503.618.111
09/09/2007	1	0	141.435.181,48	12.446.295,97	0	0	0	0
09/10/2007	1	0	141.435.181,48	12.446.295,97	0	0	0	0
09/11/2007	1	6.144.079	141.435.181,48	12.446.295,97	5.647.131	-15.981.381.471	496.948	-1.406.361.569
09/12/2007	1	0	135.788.050,22	11.949.348,42	0	0	0	0
09/01/2008	1	0	135.788.050,22	11.949.348,42	0	0	0	0
09/02/2008	1	5.931.298	135.788.050,22	11.949.348,42	5.451.561	-14.926.372.921	479.737	-1.313.520.817
08/03/2008	1	0	130.336.489,62	11.469.611,09	0	0	0	0
08/04/2008	1	0	130.336.489,62	11.469.611,09	0	0	0	0
08/05/2008	1	5.728.346	130.336.489,62	11.469.611,09	5.265.023	-13.947.047.143	463.322	-1.227.340.149
08/06/2008	1	0	125.071.466,16	11.006.289,02	0	0	0	0
08/07/2008	1	0	125.071.466,16	11.006.289,02	0	0	0	0
08/08/2008	1	5.527.653	125.071.466,16	11.006.289,02	5.080.564	-12.991.000.922	447.090	-1.143.208.081
08/09/2008	1	0	119.990.902,64	10.559.199,43	0	0	0	0
08/10/2008	1	0	119.990.902,64	10.559.199,43	0	0	0	0
08/11/2008	1	5.336.995	119.990.902,64	10.559.199,43	4.905.327	-12.091.630.260	431.669	-1.064.063.463
08/12/2008	1	0	115.085.575,96	10.127.530,68	0	0	0	0
08/01/2009	1	0	115.085.575,96	10.127.530,68	0	0	0	0
08/02/2009	1	5.145.577	115.085.575,96	10.127.530,68	4.729.390	-11.222.843.127	416.186	-987.610.195
09/03/2009	1	0	110.356.185,69	9.711.344,34	0	0	0	0
09/04/2009	1	0	110.356.185,69	9.711.344,34	0	0	0	0
09/05/2009	1	4.965.588	110.356.185,69	9.711.344,34	4.563.960	-10.419.520.220	401.628	-916.917.779
09/06/2009	1	0	105.792.225,89	9.309.715,88	0	0	0	0
09/07/2009	1	0	105.792.225,89	9.309.715,88	0	0	0	0
09/08/2009	1	4.782.187	105.792.225,89	9.309.715,88	4.395.393	-9.630.305.292	386.795	-847.466.866
09/09/2009	1	0	101.396.833,24	8.922.921,33	0	0	0	0
09/10/2009	1	0	101.396.833,24	8.922.921,33	0	0	0	0

FECHA		PRINCIPAL AVAILABLE	SENIOR NOTES	MEZZANIE NOTES	SERIE A PRINCIPAL	VIDA MEDIA	SERIE B PRINCIPAL	VIDA MEDIA
09/11/2009	1	4.612.028	101.396.833,24	8.922.921,33	4.238.996	-8.897.652.753	373.032	-782.993.442
09/12/2009	1	0	97.157.837,17	8.549.889,67	0	0	0	0
09/01/2010	1	0	97.157.837,17	8.549.889,67	0	0	0	0
09/02/2010	1	4.446.928	97.157.837,17	8.549.889,67	4.087.250	-8.203.110.506	359.678	-721.873.725
09/03/2010	1	0	93.070.587,29	8.190.211,68	0	0	0	0
09/04/2010	1	0	93.070.587,29	8.190.211,68	0	0	0	0
09/05/2010	1	4.290.905	93.070.587,29	8.190.211,68	3.943.846	-7.564.297.445	347.058	-665.658.175
09/06/2010	1	0	89.126.740,86	7.843.153,20	0	0	0	0
09/07/2010	1	0	89.126.740,86	7.843.153,20	0	0	0	0
09/08/2010	1	4.136.393	89.126.740,86	7.843.153,20	3.801.832	-6.942.144.561	334.561	-610.908.721
09/09/2010	1	0	85.324.909,23	7.508.592,01	0	0	0	0
09/10/2010	1	0	85.324.909,23	7.508.592,01	0	0	0	0
09/11/2010	1	3.990.487	85.324.909,23	7.508.592,01	3.667.727	-6.359.838.849	322.760	-559.665.819
09/12/2010	1	0	81.657.182,10	7.185.832,02	0	0	0	0
09/01/2011	1	0	81.657.182,10	7.185.832,02	0	0	0	0
09/02/2011	1	3.839.934	81.657.182,10	7.185.832,02	3.529.351	-5.795.194.590	310.583	-509.977.124
09/03/2011	1	0	78.127.830,95	6.875.249,12	0	0	0	0
09/04/2011	1	0	78.127.830,95	6.875.249,12	0	0	0	0
09/05/2011	1	3.700.873	78.127.830,95	6.875.249,12	3.401.538	-5.282.588.524	299.335	-464.867.790
09/06/2011	1	0	74.726.292,94	6.575.913,78	0	0	0	0
09/07/2011	1	0	74.726.292,94	6.575.913,78	0	0	0	0
09/08/2011	1	3.561.556	74.726.292,94	6.575.913,78	3.273.489	-4.782.567.539	288.067	-420.865.943
09/09/2011	1	0	71.452.803,87	6.287.846,74	0	0	0	0
09/10/2011	1	0	71.452.803,87	6.287.846,74	0	0	0	0
09/11/2011	1	3.432.452	71.452.803,87	6.287.846,74	3.154.827	-4.318.957.871	277.625	-380.068.293
09/12/2011	1	0	68.297.977,08	6.010.221,98	0	0	0	0
09/01/2012	1	0	68.297.977,08	6.010.221,98	0	0	0	0
09/02/2012	1	3.301.070	68.297.977,08	6.010.221,98	3.034.072	-3.874.509.552	266.998	-340.956.841
08/03/2012	1	0	65.263.905,39	5.743.223,67	0	0	0	0
08/04/2012	1	0	65.263.905,39	5.743.223,67	0	0	0	0
08/05/2012	1	3.180.095	65.263.905,39	5.743.223,67	2.922.881	-3.472.383.146	257.214	-305.569.717
08/06/2012	1	0	62.341.023,95	5.486.010,11	0	0	0	0
08/07/2012	1	0	62.341.023,95	5.486.010,11	0	0	0	0
08/08/2012	1	3.053.693	62.341.023,95	5.486.010,11	2.806.703	-3.076.146.365	246.990	-270.700.880
08/09/2012	1	0	59.534.321,06	5.239.020,25	0	0	0	0
08/10/2012	1	0	59.534.321,06	5.239.020,25	0	0	0	0
08/11/2012	1	2.939.286	59.534.321,06	5.239.020,25	2.270.266	-2.279.346.790	669.020	-671.696.334
08/12/2012	1	0	57.264.055,34	4.570.000,00	0	0	0	0
08/01/2013	1	0	57.264.055,34	4.570.000,00	0	0	0	0
08/02/2013	1	2.826.138	57.264.055,34	4.570.000,00	2.826.138	-2.577.437.739	0	0
09/03/2013	1	0	54.437.917,46	4.570.000,00	0	0	0	0
09/04/2013	1	0	54.437.917,46	4.570.000,00	0	0	0	0
09/05/2013	1	2.721.810	54.437.917,46	4.570.000,00	2.721.810	-2.237.327.936	0	0
09/06/2013	1	0	51.716.107,32	4.570.000,00	0	0	0	0
09/07/2013	1	0	51.716.107,32	4.570.000,00	0	0	0	0
09/08/2013	1	2.618.987	51.716.107,32	4.570.000,00	2.618.987	-1.911.860.756	0	0
09/09/2013	1	0	49.097.119,99	4.570.000,00	0	0	0	0
09/10/2013	1	0	49.097.119,99	4.570.000,00	0	0	0	0
09/11/2013	1	2.523.000	49.097.119,99	4.570.000,00	2.523.000	-1.609.674.122	0	0
09/12/2013	1	0	46.574.119,79	4.570.000,00	0	0	0	0
09/01/2014	1	0	46.574.119,79	4.570.000,00	0	0	0	0
09/02/2014	1	2.406.377	46.574.119,79	4.570.000,00	2.406.377	-1.313.881.740	0	0
09/03/2014	1	0	44.167.742,98	4.570.000,00	0	0	0	0
09/04/2014	1	0	44.167.742,98	4.570.000,00	0	0	0	0
09/05/2014	1	2.307.711	44.167.742,98	4.570.000,00	2.307.711	-1.054.623.733	0	0
09/06/2014	1	0	41.860.032,41	4.570.000,00	0	0	0	0
09/07/2014	1	0	41.860.032,41	4.570.000,00	0	0	0	0
09/08/2014	1	2.202.769	41.860.032,41	4.570.000,00	2.202.769	-804.010.845	0	0
09/09/2014	1	0	39.657.262,97	4.570.000,00	0	0	0	0
09/10/2014	1	0	39.657.262,97	4.570.000,00	0	0	0	0
09/11/2014	1	2.113.201	39.657.262,97	4.570.000,00	2.113.201	-576.903.877	0	0
09/12/2014	1	0	37.544.061,95	4.570.000,00	0	0	0	0
09/01/2015	1	0	37.544.061,95	4.570.000,00	0	0	0	0
09/02/2015	1	2.030.862	37.544.061,95	4.570.000,00	2.030.862	-367.586.098	0	0
09/03/2015	1	0	35.513.199,53	4.570.000,00	0	0	0	0
09/04/2015	1	0	35.513.199,53	4.570.000,00	0	0	0	0
09/05/2015	1	1.954.832	35.513.199,53	4.570.000,00	1.954.832	-179.844.548	0	0
09/06/2015	1	0	33.558.367,49	4.570.000,00	0	0	0	0
09/07/2015	1	0	33.558.367,49	4.570.000,00	0	0	0	0
09/08/2015	1	1.880.463	33.558.367,49	4.570.000,00	1.880.463	0	0	0
09/09/2015	1	0	31.677.904,00	4.570.000,00	0	0	0	0
09/10/2015	1	0	31.677.904,00	4.570.000,00	0	0	0	0
09/11/2015	1	36.247.908	31.677.904,00	4.570.000,00	31.677.904	2.914.367.168	4.570.000	420.440.000