



**: 'H'5 "I 7 ÷,**

**MARIA JOSE HERENCIAS PALOMINO  
ANALYST  
SANTANDER DE TITULIZACION, S.G.F.T, S.A.  
GRAN VIA DE HORTALEZA 3  
28033 MADRID  
[marjherencias@gruposantander.com](mailto:marjherencias@gruposantander.com)  
Tel: 912893300**



B5A9'C: 'H<9': I B8.

: 'H5" I 7 =,

-B: CFA5HCB'5H.

EI 5FH9F#G9A9GH9F.

September 19, 2016

! December 19, 2016

M95F.

8\$%

5Vfjb[ 'cb VY UZcZGUbHbXYf'XY'HjH 'j]nUjCb'G'; 'H'EG'5 "Ug; YbYfU'AUbU[ Yf.

Gj[ bUhi fY.

IGNACIO ORTEGA GAVARA - GENERAL MANAGER

=f'85H5'C: 'H<9': I B8

7cbg]jhi ijcb'8UHY	June 24, 2002	DUn]b[ '5[ Ybh	BANCO SANTANDER	
8]gvi fgYa Ybhi8 UHY	June 27, 2002	BY[ ch]Ujcb'A Uf_Yh	AIAF	
: ]bU'8 UHY'cZFYXYa d]jcb	December 18, 2033	FU]b[ g'5[ YbVYg	MOODY'S ESPAÑA	
			STANDARD & POORS	
AUbU[ Ya Ybhi7ca dUbm	SANTANDER DE TITULIZACION, S.G.F.T, S.A.	FU]b[	cb]jU	7i ffYbh
7fYX]hF][ \lgSj'GY'Yf	UNION DE CREDITOS INMOBILIARIOS	7 @ GG'5	Aaa/AAA	AaGAAÉ
		7 @ GG'6	A2/A	AHAA-

**II. SECURITIES ISSUED CHARGED TO THE FUND: SECURITISATION BONDS**

CLASS PRIORITY ISIN CODE	NUM BONDS	NOMINAL			
			Initial	Current	%Act/In
CLASS A ES0338446000	5.802	Nominal per Bond	100.000,00	9.202,73	
		Total Nominal	580.200.000,00	53.394.239,45	9,20 %
CLASS B ES0338446018	198	Nominal per Bond	100.000,00	22.727,27	
		Total Nominal	19.800.000,00	4.499.999,46	22,73 %

REDEMPTION AND INTEREST OF THE BONDS					
Current			Next		
Payment Date of the Current Period December 19, 2016			Next Payment Date March 21, 2017		
	Redemption of the Bonds	Gross Interest	Interest Rate	Gross Interest Next Coupon	Net Interest Next Coupon
CLASS A	248,54 €	0,00 €	0,0000 %	0,00 €	0,00 €
CLASS B	0,00 €	17,18 €	0,2840 %	16,49 €	13,36 €
Accrued amortisation due not payed	0,00 €				
Scheduled Amortisation	NO				



### III. ASSET PURCHASED BY THE FUND: CREDIT RIGHTS

CREDIT RIGHTS	ISSUE DATE	CURRENT DATE
Number of CR's	12.464	2.284
CR's Outstanding to be amortised	600.030.262,96	57.894.245,27
CR's Outstanding per Loan to be amortised	48.141,07	25.347,74
Interest Rate	5,36 %	1,46 %

PREPAYMENT RATE	CURRENT SITUATION
Monthly Single Rate	4,04 %
Average Monthly Single Rate	4,05 %
Constant Prepayment Rate from Constitution	11,69 %

CURRENT DELINQUENCY	Up to 1 month	From 1 to 6 months	Greater than 6 months
Debt Due (Principal + Interest)	3.316,23	10.052,64	169.961,65
Debt to be amortised	0,00	0,00	57.767.806,83
Total Debt	3.316,23	10.052,64	57.937.768,48

## F.T.A. UCI 8

### QUARTERLY BONDS PAYOUT REPORT

2016/12/19

BONDS. PRINCIPAL	
Previous Balance	59.336.268,00 €
Principal Amortised	1.442.029,08 €
Outstanding Balance	57.894.238,92 €
% of Initial Balance	9,65%
Principal accrued and unpaid	0,00 €

DATA	
Pool cut-off date	2016/12/12
Payment Date	2016/12/19
Last Payment Date	2016/09/19
Number of Days (Act/360)	91
Reference Interest Rate (%)	-0,316%
Next Payment Date	2017/03/21

INTEREST PAID	
CLASS A	0,00 €
CLASS B	3.401,64 €
Interest accrued and unpaid	0,00 €

RESIDUAL LIFE (YEARS)		
	INITIAL	2016/12/19
CLASS A	5.70	0,40
CLASS B	9.20	0,41

## F.T.A. UCI 8

### QUARTERLY COLLATERAL REPORT

2016/12/19

#### PRINCIPAL

Previous Balance	60.838.264,49 €
Principal Amortised	2.944.019,22 €
Outstanding Balance	57.894.245,27 €
Number of Credit Rights	2.284
LTV	34,40%

#### INTEREST

Interest received during relevant period	214.590,82 €
Interest accrued during relevant period	213.001,04 €

#### PRINCIPAL BALANCE IN ARREARS

	UP to 30 DAYS	30 to 60 DAYS	60 to 90 DAYS	90 to 180 DAYS	MORE 180 DAYS
Principal Balance in Arrears	2.913,28 €	1.508,58 €	17,77 €	7.217,56 €	114.781,25 €
Interest accrued on Credit Rights in Arrears	402,95 €	299,14 €	6,60 €	1.002,99 €	55.180,40 €
Outstanding Balance	667.688,41 €	153.251,24 €	1.625,93 €	179.126,72 €	1.223.336,41 €
Number of Credit Rights	21	3	1	5	34
% of Outstanding Balance	1,15%	0,26%	0,00%	0,31%	2,11%

**F.T.A. UCI 8**

**QUARTERLY COLLATERAL REPORT**

**2016/12/19**

**TRANSITORY PROPERTIES**

Last balance	137.607,28 €
Difference in Actual Period	-1.633,21 €
Current balance	135.974,07 €
Transitory properties CR's number	5

**NET LOSSES**

Last balance	122.222,81 €
Difference in Actual Period	49.731,69 €
Current balance	171.954,50 €

## F.T.A. UCI 8

### QUARTERLY REPORT - ALLOCATION OF CASH

2016/12/19

TOTAL CASH RECEIVED END OF PERIOD	1.634.236,57 €
<b>CASH RECEIVED - PRINCIPAL</b>	
Amortisation of Credit Rights	1.426.139,81 €
<b>CASH RECEIVED - INTEREST</b>	
Interest received from Credit Rights	214.590,82 €
Interest received under GIC	-5.194,06 €
<b>CONTENTIOUS</b>	0,00 €
<b>INCOMES/EXPENSES OF TRANSITORY PROPERTIES</b>	0,00 €
<b>RESERVE FUNDS</b>	0,00 €
<b>OTHERS</b>	-1.300,00 €

TOTAL CASH PAID END OF PERIOD	1.634.236,57 €
ORDINARY INCOMES	96,80 €
SGFT FEE	14.332,50 €
INTEREST CLASS A	0,00 €
INTEREST CLASS B	3.401,64 €
REDEMPTIONS CLASS A	1.442.029,08 €
REDEMPTIONS CLASS B	0,00 €
INTEREST SUBORDINATED LOAN UCB	2.843,60 €
INTEREST SUBORDINATED LOAN SANTANDER	2.843,60 €
FEE IN FAVOUR UCI	6.000,00 €
VARIABLE FEE	162.689,35 €

TREASURY ACCOUNT STATEMENT	6.000.302,63 €
<b>PRINCIPAL RESERVE FUND</b>	
Previous Balance	6.000.302,63 €
Period utilization	0,00 €
Outstanding Balance	6.000.302,63 €
<b>WITHHOLDING TAXES</b>	0,00 €
<b>ISSUE EXPENSES WITHHELD</b>	0,00 €
<b>OTHERS</b>	0,00 €



## F.T.A. UCI 8

### CREDIT ENHACEMENT AND SUBORDINATED LOAN

2016/12/19

CREDIT ENHACEMENT		
CONCEPTS	INITIAL	2016/12/19
SUBORDINATED ISSUE	96,70 %	7,77%
PRINCIPAL RESERVE FUND	11.100.000,00 € (1,85 %)	6.000.302,63 € 10,36%

SUBORDINATED LOANS		
CONCEPTS	INITIAL	2016/12/19
SUBORDINATED LOAN SANTANDER		
Total Outstanding Subordinated Loan	6.625.000,00 €	3.001.489,47 €
Interest Rate	4,590 %	0,36%
SUBORDINATED LOAN UCB		
Total Outstanding Subordinated Loan	6.625.000,00 €	3.001.489,47 €
Interest Rate	4,590 %	0,36%

## F.T.A. UCI 8

### INFORMACION RELATIVA A LOS TRIGGERS

#### TRIGGERS BONDS

1. IF 1.a) IS HIGHER THAN 1.b) THERE IS NO REDEMPTION OF CLASS B:

1.a) CR's IN ARREARS OVER 90 DAYS

N/A

1.b) 6,75% CR's OUTSTANDING BALANCE

N/A

The Class B can not be amortized until the final payment date, as it is in the minimum amount required.

#### TRIGGERS RESERVE FUND

1. IF 1.a) IS HIGHER OR EQUAL THAN 1.b) THERE IS NO REDEMPTION OF RESERVE FUND:

1.a) CR'S IN ARREARS OVER 90 DAYS

N/A

1.b) 2,85% CR'S OUTSTANDING BALANCE

N/A

2. IF 2.a) IS LOWER THAN 2.b) THERE IS NO REDEMPTION OF RESERVE FUND:

2.a) WEIGHTED AVERAGE RATE CR's

N/A

2.b) WEIGHTED AVERAGE RATE BONDS A AND B + 0,40%

N/A

3. IF 3.a) IS HIGHER OR EQUAL THAN 3.b) THERE IS NO REDEMPTION OF RESERVE FUND:

3.a) WRITTE OFF

N/A

3.b) 0,025% INITIAL OUTSTANDING BALANCE CR'S \* N/A PAYMENT DATES

N/A

The Reserve Fund remains constant to be in the minimum amount allowed.

## F.T.A. UCI 8

### DEFINITIONS

**POOL CUT-OFF DATE** Means the date in which the Gestora will carry out the necessary calculations, on behalf of the Fund, for the distribution of the available funds at this date, according with the Order of Priority of Payments.  
All the information regarding the Assets (Outstanding Balance of the Credit Rights, arrears' tables, transitory properties, stratification tables, etc.) are referred to this mentioned date.

**WRITE OFF** Those loans that at a given date are unpaid for a period equal or higher to 12 or 18 months (according to Prospectus) of arrears in due payments.

**NET LOSSES** Those loans which the Originator considers that will not recover (net of recoveries).

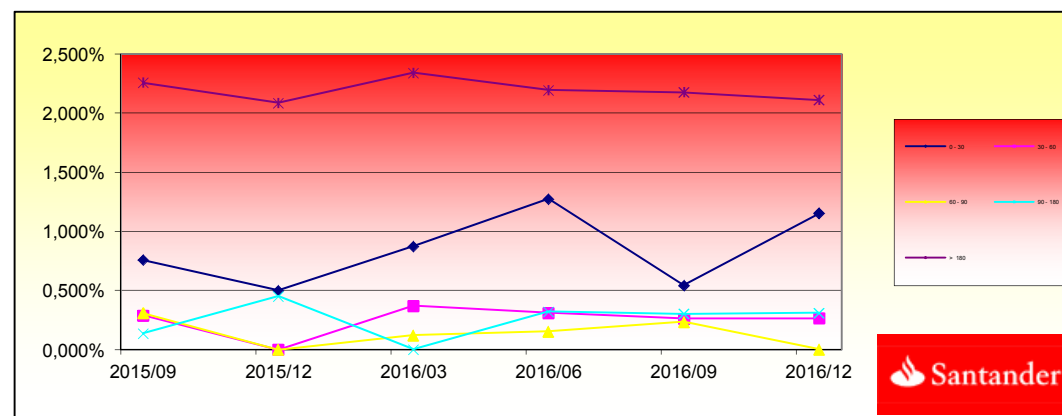
**TRANSITORY PROPERTIES** Those assets in the balance of the Fund as a consequence of a judicial or non-judicial process.

**CONTENTIOUS / JUDICIAL** Loans in which the Originator will take legal actions. This amount is included in the bucket > 180 days in arrears.

**FONDO DE TITULIZACIÓN DE ACTIVOS  
UCI 8**

**INFORME HISTORICO DE MOROSIDAD *HISTORICAL ARREARS***

<b>DÍAS EN MORA ARREARS(DAYS)</b>	<b>2015/09</b>	<b>2015/12</b>	<b>2016/03</b>	<b>2016/06</b>	<b>2016/09</b>	<b>2016/12</b>
0 - 30	0,758%	0,500%	0,875%	1,275%	0,544%	1,153%
30 - 60	0,289%	0,000%	0,371%	0,311%	0,261%	0,265%
60 - 90	0,309%	0,000%	0,120%	0,153%	0,235%	0,003%
90 - 180	0,138%	0,451%	0,001%	0,322%	0,302%	0,309%
> 180	2,258%	2,088%	2,342%	2,194%	2,177%	2,113%



**FONDO DE TITULIZACIÓN DE ACTIVOS  
UCI 8**

L.T.V.

INTERVALO (%) (%)	SALDOS VIVOS OUTS. BALANC	% SALDOS VIVOS % OUTSTANDING	Nº. DE PRESTAMOS LOANS	% Nº DE PRESTAMOS % LOANS
<b>0,00 - 09,99</b>	726.551,13	1,3371%	98	6,0419%
<b>10,00 - 19,99</b>	3.710.287,29	6,8280%	200	12,3305%
<b>20,00 - 29,99</b>	7.739.610,86	14,2431%	256	15,7830%
<b>30,00 - 39,99</b>	12.798.809,43	23,5534%	345	21,2700%
<b>40,00 - 49,99</b>	25.595.809,81	47,1035%	643	39,6424%
<b>50,00 - 59,99</b>	3.085.940,82	5,6790%	66	4,0691%
<b>60,00 - 70,00</b>	575.631,81	1,0593%	12	0,7398%
<b>&gt; 70</b>	106.828,74	0,1966%	2	0,1233%

**F.T.A.: UCI 8**

**Contrapartes / Counterpart**

<b>Contrato Agreement</b>	<b>Contraparte Counterpart</b>	<b>Rating actual C/P Current rating Short Time</b>	<b>Rating mínimo exigido C/P Minimum rating Short Term</b>
Cuenta de Tesorería / Treasury account	Banco Santander S.A.	P- 2 A- 2	Moodys P-1 S & P A-1

**Comentarios/ Comment**

LA CONTRAPARTE NO TIENE EL RATING MÍNIMO EXIGIDO. SE HA TRASLADADO LA CUENTA DE TESORERÍA A UNA CONTRAPARTE CON EL RATING MÍNIMO EXIGIDO.

COUNTERPARTY DOES NOT HAVE THE MINIMUM RATING REQUIRED. TREASURY ACCOUNT HAS BEEN TRANSFERRED TO A COUNTERPARTY WITH MINIMUM RATING REQUIRED.

FECHA	Balance antes de prepago	Balance real	1,03%	Permanencia	Mortalidad mensual	Tasa Cte. Prepago	Mortalidad mensual	Tasa Cte. Prepago
			Vector de Prepago	a final de mes				
	600.030.263,3		100,00%	100,00%				4,05%
jul-02	598.997.437,3	590.336.116,5	98,97%	98,55%	1,45%	16,04%	1,45%	16,04%
ago-02	597.959.998,1	582.758.168,9	97,95%	97,46%	1,28%	14,32%	1,11%	12,56%
sep-02	596.917.925,0	575.197.486,2	96,94%	96,36%	1,23%	13,78%	1,13%	12,70%
oct-02	595.871.197,3	566.689.574,6	95,94%	95,10%	1,25%	13,98%	1,31%	14,59%
nov-02	594.819.794,2	560.350.472,3	94,95%	94,21%	1,19%	13,35%	0,94%	10,76%
dic-02	593.763.694,9	550.626.284,9	93,98%	92,73%	1,25%	14,00%	1,56%	17,20%
ene-03	592.702.878,3	542.196.558,6	93,01%	91,48%	1,26%	14,16%	1,35%	15,10%
feb-03	591.637.323,4	531.194.838,9	92,05%	89,78%	1,34%	14,93%	1,85%	20,10%
mar-03	590.567.009,0	521.753.707,6	91,10%	88,35%	1,37%	15,23%	1,60%	17,59%
abr-03	589.491.913,9	510.015.634,9	90,16%	86,52%	1,44%	15,95%	2,07%	22,21%
may-03	588.412.016,6	500.008.904,2	89,23%	84,98%	1,47%	16,27%	1,78%	19,41%
jun-03	587.327.295,9	488.451.623,0	88,31%	83,17%	1,52%	16,83%	2,13%	22,78%
jul-03	586.238.815,9	476.702.710,4	87,40%	81,32%	1,58%	17,38%	2,22%	23,66%
ago-03	585.145.474,1	463.533.357,0	86,50%	79,22%	1,65%	18,10%	2,58%	26,93%
sep-03	584.047.248,6	450.873.995,7	85,61%	77,20%	1,71%	18,70%	2,55%	26,64%
oct-03	582.944.117,8	439.324.835,0	84,73%	75,36%	1,75%	19,11%	2,38%	25,08%
nov-03	581.836.059,7	424.848.001,3	83,86%	73,02%	1,83%	19,91%	3,11%	31,56%
dic-03	580.723.052,2	410.904.676,0	82,99%	70,76%	1,90%	20,59%	3,10%	31,44%
ene-04	579.606.665,5	399.638.040,0	82,14%	68,95%	1,94%	20,93%	2,55%	26,69%
feb-04	578.485.292,3	390.516.469,2	81,29%	67,51%	1,95%	21,00%	2,09%	22,42%
mar-04	577.358.910,4	378.755.165,1	80,45%	65,60%	1,99%	21,41%	2,82%	29,08%
abr-04	576.227.497,2	370.068.363,0	79,63%	64,22%	1,99%	21,46%	2,10%	22,50%
may-04	575.091.030,4	360.022.327,4	78,81%	62,60%	2,02%	21,68%	2,52%	26,40%
jun-04	573.949.487,4	348.072.410,1	77,99%	60,65%	2,06%	22,13%	3,13%	31,70%
jul-04	572.806.848,5	337.247.978,8	77,19%	58,88%	2,10%	22,45%	2,92%	29,90%
ago-04	571.659.105,8	328.958.493,0	76,39%	57,54%	2,10%	22,51%	2,26%	24,01%
sep-04	570.506.236,6	322.988.731,8	75,61%	56,61%	2,09%	22,34%	1,62%	17,76%

oct-04	569.348.217,8	316.160.050,7	74,83%	55,53%	2,08%	22,28%	1,92%	20,71%
nov-04	568.185.026,6	308.983.044,7	74,06%	54,38%	2,08%	22,28%	2,07%	22,20%
dic-04	567.016.639,8	301.373.878,5	73,29%	53,15%	2,08%	22,34%	2,26%	24,01%
ene-05	565.848.494,2	292.896.578,7	72,54%	51,76%	2,10%	22,50%	2,61%	27,21%
feb-05	564.675.130,8	285.599.516,4	71,79%	50,58%	2,11%	22,56%	2,29%	24,26%
mar-05	563.496.526,5	278.896.649,9	71,05%	49,49%	2,11%	22,57%	2,14%	22,89%
abr-05	562.312.657,7	272.426.583,8	70,32%	48,45%	2,11%	22,57%	2,11%	22,62%
may-05	561.123.500,9	265.219.774,5	69,60%	47,27%	2,12%	22,66%	2,44%	25,65%
jun-05	559.929.032,6	256.988.491,8	68,88%	45,90%	2,14%	22,86%	2,90%	29,73%
jul-05	558.732.170,6	249.725.804,7	68,17%	44,70%	2,15%	22,99%	2,62%	27,26%
ago-05	557.529.962,5	243.550.019,5	67,47%	43,68%	2,16%	23,01%	2,26%	24,02%
sep-05	556.322.384,6	239.169.550,9	66,77%	42,99%	2,14%	22,88%	1,59%	17,45%
oct-05	555.109.412,9	233.417.585,8	66,08%	42,05%	2,14%	22,89%	2,19%	23,35%
nov-05	553.891.023,2	228.927.706,3	65,40%	41,33%	2,13%	22,79%	1,71%	18,67%
dic-05	552.667.191,4	222.405.592,8	64,73%	40,24%	2,14%	22,90%	2,63%	27,41%
ene-06	551.441.648,7	217.129.792,2	64,06%	39,37%	2,14%	22,90%	2,16%	23,01%
feb-06	550.210.631,9	211.145.985,9	63,40%	38,38%	2,15%	22,99%	2,54%	26,55%
mar-06	548.974.116,6	206.090.152,6	62,75%	37,54%	2,15%	22,99%	2,17%	23,19%
abr-06	547.732.078,1	201.397.930,4	62,10%	36,77%	2,15%	22,97%	2,06%	22,06%
may-06	546.484.491,9	196.469.202,0	61,46%	35,95%	2,15%	22,99%	2,22%	23,66%
jun-06	545.231.333,1	192.092.021,9	60,83%	35,23%	2,15%	22,96%	2,00%	21,56%
jul-06	543.978.106,5	187.022.149,3	60,20%	34,38%	2,16%	23,01%	2,41%	25,42%
ago-06	542.719.282,2	181.919.552,4	59,58%	33,52%	2,16%	23,07%	2,50%	26,22%
sep-06	541.454.835,1	178.770.992,7	58,97%	33,02%	2,15%	22,95%	1,50%	16,60%
oct-06	540.184.740,1	175.824.139,0	58,36%	32,55%	2,14%	22,82%	1,42%	15,74%
nov-06	538.908.972,0	172.183.018,5	57,76%	31,95%	2,13%	22,77%	1,84%	19,97%
dic-06	537.627.505,6	169.047.071,9	57,17%	31,44%	2,12%	22,67%	1,59%	17,47%
ene-07	536.344.900,4	165.941.108,6	56,58%	30,94%	2,11%	22,58%	1,60%	17,62%
feb-07	535.056.566,3	163.218.217,2	55,99%	30,50%	2,10%	22,46%	1,40%	15,61%
mar-07	533.762.477,6	160.368.435,2	55,42%	30,04%	2,09%	22,37%	1,51%	16,67%
abr-07	532.462.608,6	157.408.315,4	54,85%	29,56%	2,08%	22,29%	1,61%	17,66%
may-07	531.156.933,6	155.454.409,8	54,28%	29,27%	2,06%	22,11%	1,00%	11,35%
jun-07	529.845.426,6	152.552.517,1	53,72%	28,79%	2,05%	22,04%	1,62%	17,84%
jul-07	528.537.148,2	149.957.401,2	53,17%	28,37%	2,04%	21,95%	1,46%	16,16%
ago-07	527.223.026,2	147.121.419,0	52,62%	27,90%	2,04%	21,89%	1,65%	18,06%
sep-07	525.903.034,4	144.806.768,0	52,08%	27,53%	2,03%	21,78%	1,33%	14,80%



oct-07	524.577.146,7	143.156.541,7	51,54%	27,29%	2,01%	21,61%	0,89%	10,17%
nov-07	523.245.336,7	141.308.067,5	51,01%	27,01%	1,99%	21,47%	1,04%	11,79%
dic-07	521.907.577,9	139.871.250,2	50,48%	26,80%	1,98%	21,29%	0,76%	8,78%
ene-08	520.570.925,8	138.107.435,9	49,96%	26,53%	1,96%	21,15%	1,01%	11,44%
feb-08	519.228.303,4	136.354.598,6	49,45%	26,26%	1,95%	21,02%	1,01%	11,51%
mar-08	517.879.683,9	134.610.502,9	48,94%	25,99%	1,93%	20,89%	1,02%	11,60%
abr-08	516.525.040,5	131.928.623,8	48,44%	25,54%	1,93%	20,86%	1,74%	18,95%
may-08	515.164.346,5	129.941.379,3	47,94%	25,22%	1,92%	20,77%	1,25%	13,97%
jun-08	513.797.574,6	128.108.043,7	47,44%	24,93%	1,91%	20,67%	1,15%	12,95%
jul-08	512.441.062,9	126.336.463,3	46,95%	24,65%	1,90%	20,56%	1,12%	12,66%
ago-08	511.078.492,1	124.386.028,0	46,47%	24,34%	1,89%	20,48%	1,28%	14,34%
sep-08	509.709.835,1	123.497.219,7	45,99%	24,23%	1,87%	20,29%	0,45%	5,25%
oct-08	508.335.064,8	122.090.503,1	45,52%	24,02%	1,86%	20,17%	0,87%	9,97%
nov-08	506.954.153,9	120.959.003,46	45,05%	23,86%	1,84%	20,01%	0,66%	7,60%
dic-08	505.567.074,9	120.020.681,9	44,59%	23,74%	1,83%	19,85%	0,50%	5,88%
ene-09	504.179.585,1	119.174.979,51	44,13%	23,64%	1,81%	19,68%	0,43%	5,06%
feb-09	502.785.897,9	118.337.477,95	43,67%	23,54%	1,79%	19,51%	0,43%	5,01%
mar-09	501.385.985,5	117.117.783,69	43,22%	23,36%	1,78%	19,38%	0,75%	8,69%
abr-09	499.979.820,1	116.344.637,4	42,78%	23,27%	1,76%	19,21%	0,38%	4,47%
may-09	498.567.373,9	115.447.567,12	42,34%	23,16%	1,75%	19,06%	0,49%	5,72%
jun-09	497.148.618,8	114.397.205,0	41,90%	23,01%	1,73%	18,93%	0,63%	7,27%
jul-09	495.734.113,1	113.437.726,2	41,47%	22,88%	1,72%	18,80%	0,56%	6,47%
ago-09	494.313.289,4	112.491.499,2	41,04%	22,76%	1,71%	18,66%	0,55%	6,39%
sep-09	492.886.119,2	111.589.570,6	40,62%	22,64%	1,69%	18,53%	0,51%	6,00%
oct-09	491.452.574,4	110.241.032,7	40,20%	22,43%	1,68%	18,44%	0,92%	10,50%
nov-09	490.012.626,4	109.251.594,1	39,78%	22,30%	1,67%	18,32%	0,61%	7,04%
dic-09	488.566.246,7	107.969.332,4	39,37%	22,10%	1,66%	18,23%	0,88%	10,08%
ene-10	487.130.753,2	107.090.540,9	38,97%	21,98%	1,65%	18,11%	0,52%	6,08%
feb-10	485.688.847,8	106.439.175,4	38,57%	21,92%	1,64%	17,96%	0,31%	3,69%
mar-10	484.240.501,9	105.564.060,9	38,17%	21,80%	1,62%	17,84%	0,53%	6,13%
abr-10	482.785.686,8	104.704.498,9	37,78%	21,69%	1,61%	17,73%	0,52%	6,01%
may-10	481.324.373,4	103.268.583,1	37,39%	21,46%	1,61%	17,67%	1,07%	12,13%
jun-10	479.856.532,9	102.653.007,5	37,00%	21,39%	1,59%	17,53%	0,29%	3,45%
jul-10	478.387.721,4	102.000.528,9	36,62%	21,32%	1,58%	17,40%	0,33%	3,90%
ago-10	476.912.349,2	101.250.530,4	36,24%	21,23%	1,57%	17,28%	0,43%	5,02%
sep-10	475.430.387,1	100.664.881,3	35,87%	21,17%	1,56%	17,15%	0,27%	3,17%

oct-10	473.941.805,4	99.998.260,2	35,50%	21,10%	1,54%	17,03%	0,35%	4,12%
nov-10	472.446.574,8	99.322.325,4	35,14%	21,02%	1,53%	16,91%	0,36%	4,25%
dic-10	470.944.665,5	98.374.778,0	34,77%	20,89%	1,52%	16,83%	0,64%	7,39%
ene-11	469.445.923,8	97.530.280,9	34,42%	20,78%	1,51%	16,73%	0,54%	6,31%
feb-11	467.940.487,7	96.678.758,4	34,06%	20,66%	1,50%	16,64%	0,55%	6,45%
mar-11	466.428.327,3	95.979.530,8	33,71%	20,58%	1,49%	16,53%	0,40%	4,71%
abr-11	464.909.412,6	95.198.873,2	33,36%	20,48%	1,48%	16,43%	0,49%	5,72%
may-11	463.383.713,5	94.394.980,4	33,02%	20,37%	1,48%	16,34%	0,52%	6,04%
jun-11	461.851.199,5	93.765.759,0	32,68%	20,30%	1,47%	16,24%	0,34%	3,97%
jul-11	460.332.686,6	93.018.081,9	32,34%	20,21%	1,46%	16,14%	0,47%	5,50%
ago-11	458.807.391,1	92.448.046,9	32,01%	20,15%	1,45%	16,03%	0,28%	3,34%
sep-11	457.275.282,6	91.883.635,4	31,68%	20,09%	1,44%	15,93%	0,28%	3,28%
oct-11	455.736.330,6	91.280.780,2	31,35%	20,03%	1,43%	15,83%	0,32%	3,78%
nov-11	454.190.504,7	90.721.497,5	31,03%	19,97%	1,42%	15,72%	0,27%	3,24%
dic-11	452.637.774,1	90.125.887,7	30,71%	19,91%	1,41%	15,62%	0,32%	3,72%
ene-12	451.091.398,0	89.499.892,8	30,39%	19,84%	1,40%	15,53%	0,35%	4,17%
feb-12	449.538.114,7	89.001.861,1	30,08%	19,80%	1,39%	15,43%	0,21%	2,52%
mar-12	447.977.893,5	88.378.985,7	29,77%	19,73%	1,38%	15,34%	0,35%	4,17%
abr-12	446.410.703,3	87.739.683,3	29,46%	19,65%	1,37%	15,25%	0,37%	4,41%
may-12	444.836.512,9	87.225.906,3	29,16%	19,61%	1,36%	15,15%	0,23%	2,77%
jun-12	443.255.291,2	86.620.130,1	28,86%	19,54%	1,35%	15,06%	0,34%	4,01%
jul-12	441.671.649,1	86.103.836,4	28,56%	19,49%	1,34%	14,97%	0,24%	2,84%
ago-12	440.080.933,4	85.592.902,8	28,27%	19,45%	1,33%	14,88%	0,23%	2,77%
sep-12	438.483.112,6	84.977.612,0	27,98%	19,38%	1,33%	14,79%	0,36%	4,20%
oct-12	436.878.154,8	84.455.185,9	27,69%	19,33%	1,32%	14,70%	0,25%	2,96%
nov-12	435.266.028,2	84.040.900,0	27,40%	19,31%	1,31%	14,61%	0,12%	1,45%
dic-12	433.646.700,7	83.520.678,0	27,12%	19,26%	1,30%	14,52%	0,25%	2,93%
ene-13	432.033.235,9	82.926.864,8	26,84%	19,19%	1,29%	14,44%	0,34%	4,01%
feb-13	430.412.564,3	82.328.928,2	26,57%	19,13%	1,28%	14,36%	0,35%	4,09%
mar-13	428.784.653,6	81.753.513,6	26,29%	19,07%	1,28%	14,29%	0,32%	3,80%
abr-13	427.149.471,7	81.251.065,3	26,02%	19,02%	1,27%	14,20%	0,23%	2,77%
may-13	425.506.985,9	80.658.721,1	25,75%	18,96%	1,26%	14,13%	0,35%	4,07%
jun-13	423.857.163,6	80.208.164,7	25,49%	18,92%	1,25%	14,04%	0,17%	2,04%
jul-13	422.220.975,4	79.600.389,6	25,22%	18,85%	1,25%	13,98%	0,37%	4,39%
ago-13	420.577.478,9	79.010.610,0	24,96%	18,79%	1,24%	13,91%	0,35%	4,16%
sep-13	418.926.641,5	78.530.798,4	24,71%	18,75%	1,23%	13,83%	0,22%	2,56%

oct-13	417.268.430,3	78.087.617,4	24,45%	18,71%	1,22%	13,75%	0,17%	2,01%
nov-13	415.602.812,4	77.652.223,4	24,20%	18,68%	1,22%	13,66%	0,16%	1,89%
dic-13	413.929.754,7	77.081.919,6	23,95%	18,62%	1,21%	13,60%	0,33%	3,93%
ene-14	412.257.215,2	76.402.626,4	23,70%	18,53%	1,21%	13,54%	0,48%	5,60%
feb-14	410.577.204,9	75.894.331,3	23,46%	18,48%	1,20%	13,47%	0,26%	3,06%
mar-14	408.889.690,6	75.340.231,7	23,22%	18,43%	1,19%	13,41%	0,32%	3,78%
abr-14	407.194.638,8	74.746.202,8	22,98%	18,36%	1,19%	13,35%	0,38%	4,41%
may-14	405.492.015,7	74.265.637,9	22,74%	18,31%	1,18%	13,28%	0,23%	2,68%
jun-14	403.781.787,5	73.626.814,7	22,51%	18,23%	1,17%	13,22%	0,44%	5,16%
jul-14	402.077.671,6	73.084.906,7	22,28%	18,18%	1,17%	13,16%	0,32%	3,72%
ago-14	400.365.944,0	72.577.949,8	22,05%	18,13%	1,16%	13,10%	0,27%	3,18%
sep-14	398.646.570,6	72.079.488,7	21,82%	18,08%	1,16%	13,03%	0,26%	3,06%
oct-14	396.919.517,4	71.686.662,9	21,60%	18,06%	1,15%	12,96%	0,11%	1,34%
nov-14	395.184.750,0	70.839.067,6	21,37%	17,93%	1,15%	12,93%	0,75%	8,62%
dic-14	393.442.233,9	70.306.799,8	21,15%	17,87%	1,14%	12,87%	0,31%	3,68%
ene-15	391.722.391,0	69.731.046,0	20,93%	17,80%	1,14%	12,82%	0,38%	4,51%
feb-15	389.994.866,2	69.206.949,6	20,72%	17,75%	1,13%	12,76%	0,31%	3,68%
mar-15	388.259.625,0	68.685.168,1	20,51%	17,69%	1,13%	12,70%	0,31%	3,66%
abr-15	386.516.633,1	68.230.385,7	20,29%	17,65%	1,12%	12,64%	0,21%	2,54%
may-15	384.765.855,9	67.801.483,9	20,09%	17,62%	1,11%	12,58%	0,18%	2,10%
jun-15	383.007.258,5	67.157.530,8	19,88%	17,53%	1,11%	12,53%	0,49%	5,78%
jul-15	381.252.644,0	66.694.139,7	19,67%	17,49%	1,10%	12,48%	0,23%	2,76%
ago-15	379.490.192,3	66.127.314,1	19,47%	17,43%	1,10%	12,43%	0,39%	4,57%
sep-15	377.719.868,3	65.596.340,3	19,27%	17,37%	1,09%	12,38%	0,34%	3,98%
oct-15	375.941.636,8	65.059.790,7	19,07%	17,31%	1,09%	12,33%	0,35%	4,11%
nov-15	374.155.462,5	64.527.561,1	18,88%	17,25%	1,09%	12,28%	0,34%	4,06%
dic-15	372.361.310,0	64.026.988,6	18,68%	17,19%	1,08%	12,23%	0,30%	3,51%
ene-16	370.596.490,9	63.440.799,8	18,49%	17,12%	1,08%	12,19%	0,44%	5,20%
feb-16	368.823.788,8	62.927.433,7	18,30%	17,06%	1,07%	12,14%	0,33%	3,92%
mar-16	367.043.168,7	62.347.594,7	18,11%	16,99%	1,07%	12,10%	0,44%	5,16%
abr-16	365.254.595,2	61.868.600,7	17,92%	16,94%	1,06%	12,05%	0,28%	3,34%
may-16	363.458.032,7	61.328.280,1	17,74%	16,87%	1,06%	12,00%	0,38%	4,50%
jun-16	361.653.445,5	60.838.264,5	17,56%	16,82%	1,06%	11,95%	0,30%	3,59%
jul-16	359.885.034,0	60.366.871,5	17,37%	16,77%	1,05%	11,91%	0,29%	3,39%
ago-16	358.108.723,6	59.884.186,2	17,20%	16,72%	1,05%	11,86%	0,31%	3,63%
sep-16	356.324.479,1	59.336.263,3	17,02%	16,65%	1,04%	11,82%	0,42%	4,91%

oct-16	354.532.264,9	58.836.572,5	16,84%	16,60%	1,04%	11,78%	0,34%	4,01%
nov-16	352.732.045,4	58.392.985,8	16,67%	16,55%	1,03%	11,73%	0,25%	2,93%
dic-16	350.923.785,0	57.894.245,3	16,50%	16,50%	1,03%	11,69%	0,34%	4,04%

FECHA ACTUAL	11-12-16
VIDA MEDIA A	
	0,40

VIDA MEDIA B	
	0,41

FECHA	PRINCIPAL DISPONIBLE	BONOS A	BONOS B	PRINCIPAL A	PRINCIPAL B	VIDA MEDIA
			600000	450000		
		580.200.000	19.800.000	0		
11-7-02	0	580.200.000	19.800.000	0	0	0
11-8-02	1	0	580.200.000	19.800.000	0	0
11-9-02	1	24.802.514	580.200.000	19.800.000	24.802.514	0
11-10-02	1	0	555.397.486	19.800.000	0	0
11-11-02	1	0	555.397.486	19.800.000	0	0
11-12-02	1	24.571.201	555.397.486	19.800.000	24.571.201	0
11-1-03	1	0	530.826.285	19.800.000	0	0
11-2-03	1	0	530.826.285	19.800.000	0	0
11-3-03	1	28.872.577	530.826.285	19.800.000	28.872.577	0
11-4-03	1	0	501.953.708	19.800.000	0	0
11-5-03	1	0	501.953.708	19.800.000	0	0
11-6-03	1	33.302.085	501.953.708	19.800.000	33.302.085	0
11-7-03	1	0	468.651.623	19.800.000	0	0
11-8-03	1	0	468.651.623	19.800.000	0	0
11-9-03	1	37.577.627	468.651.623	19.800.000	37.577.627	0
11-10-03	1	0	431.073.996	19.800.000	0	0
11-11-03	1	0	431.073.996	19.800.000	0	0
11-12-03	1	39.969.320	431.073.996	19.800.000	39.969.320	0
11-1-04	1	0	391.104.676	19.800.000	0	0
11-2-04	1	0	391.104.676	19.800.000	0	0
11-3-04	1	32.149.511	391.104.676	19.800.000	32.149.511	0
11-4-04	1	0	358.955.165	19.800.000	0	0
11-5-04	1	0	358.955.165	19.800.000	0	0
11-6-04	1	30.682.755	358.955.165	19.800.000	30.682.755	0
11-7-04	1	0	328.272.410	19.800.000	0	0
11-8-04	1	0	328.272.410	19.800.000	0	0
11-9-04	1	25.083.678	328.272.410	19.800.000	25.083.678	0
11-10-04	1	0	303.188.732	19.800.000	0	0

FECHA ACTUAL	11-12-16
VIDA MEDIA A	
	0,40

VIDA MEDIA B	
	0,41

FECHA	PRINCIPAL DISPONIBLE	BONOS A	BONOS B	PRINCIPAL A	PRINCIPAL B	VIDA MEDIA	
			600000	450000			
11-11-04	1	0	303.188.732	19.800.000	0	0	
11-12-04	1	21.614.853	303.188.732	19.800.000	20.474.024	1.140.829	-5.000.254.750
11-1-05	1	0	282.714.708	18.659.171	0	0	
11-2-05	1	0	282.714.708	18.659.171	0	0	
11-3-05	1	22.477.229	282.714.708	18.659.171	21.085.580	1.391.648	-5.974.346.159
11-4-05	1	0	261.629.127	17.267.522	0	0	
11-5-05	1	0	261.629.127	17.267.522	0	0	
11-6-05	1	21.908.158	261.629.127	17.267.522	20.551.743	1.356.415	-5.698.299.588
11-7-05	1	0	241.077.384	15.911.107	0	0	
11-8-05	1	0	241.077.384	15.911.107	0	0	
11-9-05	1	17.818.941	241.077.384	15.911.107	16.715.704	1.103.236	-4.533.198.757
11-10-05	1	0	224.361.680	14.807.871	0	0	
11-11-05	1	0	224.361.680	14.807.871	0	0	
11-12-05	1	16.763.958	224.361.680	14.807.871	15.726.039	1.037.919	-4.170.356.954
11-1-06	1	0	208.635.641	13.769.952	0	0	
11-2-06	1	0	208.635.641	13.769.952	0	0	
11-3-06	1	16.315.440	208.635.641	13.769.952	15.305.291	1.010.149	-3.967.866.089
11-4-06	1	0	193.330.349	12.759.803	0	0	
11-5-06	1	0	193.330.349	12.759.803	0	0	
11-6-06	1	13.998.131	193.330.349	12.759.803	13.131.455	866.676	-3.324.569.161
11-7-06	1	0	180.198.895	11.893.127	0	0	
11-8-06	1	0	180.198.895	11.893.127	0	0	
11-9-06	1	13.321.029	180.198.895	11.893.127	12.496.275	824.754	-3.087.879.561
11-10-06	1	0	167.702.620	11.068.373	0	0	
11-11-06	1	0	167.702.620	11.068.373	0	0	
11-12-06	1	9.723.921	167.702.620	11.068.373	9.121.877	602.044	-2.199.266.267
11-1-07	1	0	158.580.743	10.466.329	0	0	
11-2-07	1	0	158.580.743	10.466.329	0	0	
11-3-07	1	8.678.637	158.580.743	10.466.329	8.141.310	537.326	-1.914.494.239

FECHA ACTUAL	11-12-16
VIDA MEDIA A	
	0,40

VIDA MEDIA B	
	0,41

FECHA	PRINCIPAL DISPONIBLE	BONOS A	BONOS B	PRINCIPAL A	PRINCIPAL B	VIDA MEDIA	
				600000	450000		
11-4-07	1	0	150.439.433	9.929.003	0	0	
11-5-07	1	0	150.439.433	9.929.003	0	0	
11-6-07	1	7.815.918	150.439.433	9.929.003	7.332.006	483.912	-1.679.659.850
11-7-07	1	0	143.107.427	9.445.090	0	0	
11-8-07	1	0	143.107.427	9.445.090	0	0	
11-9-07	1	7.745.749	143.107.427	9.445.090	7.266.181	479.568	-1.620.460.128
11-10-07	1	0	135.841.246	8.965.522	0	0	
11-11-07	1	0	135.841.246	8.965.522	0	0	
11-12-07	1	4.933.280	135.841.246	8.965.522	4.627.842	305.438	-1.004.278.793
11-1-08	1	0	131.213.404	8.660.085	0	0	
11-2-08	1	0	131.213.404	8.660.085	0	0	
11-3-08	1	5.260.747	131.213.404	8.660.085	4.935.035	325.712	-1.041.302.251
11-4-08	1	0	126.278.369	8.334.372	0	0	
11-5-08	1	0	126.278.369	8.334.372	0	0	
11-6-08	1	6.502.459	126.278.369	8.334.372	6.099.868	402.591	-1.250.045.923
11-7-08	1	0	120.178.501	7.931.781	0	0	
11-8-08	1	0	120.178.501	7.931.781	0	0	
11-9-08	1	4.610.824	120.178.501	7.931.781	4.325.351	285.473	-860.130.629
11-10-08	1	0	115.853.150	7.646.308	0	0	
11-11-08	1	0	115.853.150	7.646.308	0	0	
11-12-08	1	3.476.538	115.853.150	7.646.308	3.261.292	215.245	-628.946.769
11-1-09	1	0	112.591.857	7.431.063	0	0	
11-2-09	1	0	112.591.857	7.431.063	0	0	
11-3-09	1	2.902.898	112.591.857	7.431.063	2.723.169	179.729	-508.992.977
11-4-09	1	0	109.868.688	7.251.333	0	0	
11-5-09	1	0	109.868.688	7.251.333	0	0	
11-6-09	1	2.720.579	109.868.688	7.251.333	2.552.138	168.441	-461.528.570
11-7-09	1	0	107.316.551	7.082.892	0	0	
11-8-09	1	0	107.316.551	7.082.892	0	0	

FECHA ACTUAL	11-12-16
VIDA MEDIA A	
	0,40

VIDA MEDIA B	
	0,41

FECHA	PRINCIPAL DISPONIBLE	BONOS A	BONOS B	PRINCIPAL A	PRINCIPAL B	VIDA MEDIA	
			600000	450000			
11-9-09	1	2.807.634	107.316.551	7.082.892	2.633.803	173.831	-460.304.539
11-10-09	1	0	104.682.747	6.909.061	0	0	0
11-11-09	1	0	104.682.747	6.909.061	0	0	0
11-12-09	1	3.620.238	104.682.747	6.909.061	3.396.096	224.142	-573.131.933
11-1-10	1	0	101.286.651	6.684.919	0	0	0
11-2-10	1	0	101.286.651	6.684.919	0	0	0
11-3-10	1	2.405.272	101.286.651	6.684.919	2.256.352	148.919	-367.383.788
11-4-10	1	0	99.030.299	6.536.000	0	0	0
11-5-10	1	0	99.030.299	6.536.000	0	0	0
11-6-10	1	2.911.053	99.030.299	6.536.000	2.730.819	180.234	-428.055.926
11-7-10	1	0	96.299.480	6.355.766	0	0	0
11-8-10	1	0	96.299.480	6.355.766	0	0	0
11-9-10	1	1.988.126	96.299.480	6.355.766	1.865.034	123.092	-281.019.585
11-10-10	1	0	94.434.446	6.232.673	0	0	0
11-11-10	1	0	94.434.446	6.232.673	0	0	0
11-12-10	1	2.290.103	94.434.446	6.232.673	2.148.315	141.789	-310.800.969
11-1-11	1	0	92.286.131	6.090.885	0	0	0
11-2-11	1	0	92.286.131	6.090.885	0	0	0
11-3-11	1	2.395.247	92.286.131	6.090.885	2.246.949	148.299	-311.723.664
11-4-11	1	0	90.039.183	5.942.586	0	0	0
11-5-11	1	0	90.039.183	5.942.586	0	0	0
11-6-11	1	2.213.772	90.039.183	5.942.586	2.076.709	137.063	-275.496.224
11-7-11	1	0	87.962.474	5.805.523	0	0	0
11-8-11	1	0	87.962.474	5.805.523	0	0	0
11-9-11	1	1.882.124	87.962.474	5.805.523	1.765.594	116.529	-223.503.062
11-10-11	1	0	86.196.879	5.688.994	0	0	0
11-11-11	1	0	86.196.879	5.688.994	0	0	0
11-12-11	1	1.757.748	86.196.879	5.688.994	1.648.919	108.829	-198.829.952
11-1-12	1	0	84.547.960	5.580.165	0	0	0



FECHA ACTUAL	11-12-16
VIDA MEDIA A	
	0,40

VIDA MEDIA B	
	0,41

FECHA	PRINCIPAL DISPONIBLE	BONOS A	BONOS B	PRINCIPAL A	PRINCIPAL B	VIDA MEDIA	
				600000	450000		
11-2-12	1	0	84.547.960	5.580.165	0	0	
11-3-12	1	1.746.902	84.547.960	5.580.165	1.638.745	108.157	-187.760.831
11-4-12	1	0	82.909.215	5.472.008	0	0	0
11-5-12	1	0	82.909.215	5.472.008	0	0	0
11-6-12	1	1.758.856	82.909.215	5.472.008	1.649.958	108.897	-179.027.082
11-7-12	1	0	81.259.257	5.363.111	0	0	0
11-8-12	1	0	81.259.257	5.363.111	0	0	0
11-9-12	1	1.642.518	81.259.257	5.363.111	1.540.824	101.694	-157.829.651
11-10-12	1	0	79.718.433	5.261.417	0	0	0
11-11-12	1	0	79.718.433	5.261.417	0	0	0
11-12-12	1	1.456.934	79.718.433	5.261.417	1.366.730	90.204	-131.788.291
11-1-13	1	0	78.351.704	5.171.212	0	0	0
11-2-13	1	0	78.351.704	5.171.212	0	0	0
11-3-13	1	1.767.164	78.351.704	5.171.212	1.657.753	109.412	-150.003.419
11-4-13	1	0	76.693.951	5.061.801	0	0	0
11-5-13	1	0	76.693.951	5.061.801	0	0	0
11-6-13	1	1.545.349	76.693.951	5.061.801	1.449.671	95.678	-122.372.494
11-7-13	1	0	75.244.280	4.966.122	0	0	0
11-8-13	1	0	75.244.280	4.966.122	0	0	0
11-9-13	1	1.677.366	75.244.280	4.966.122	1.573.514	103.852	-123.272.259
11-10-13	1	0	73.670.766	4.862.271	0	0	0
11-11-13	1	0	73.670.766	4.862.271	0	0	0
11-12-13	1	1.448.879	73.670.766	4.862.271	1.359.173	89.705	-98.317.169
11-1-14	1	0	72.311.592	4.772.565	0	0	0
11-2-14	1	0	72.311.592	4.772.565	0	0	0
11-3-14	1	1.741.688	72.311.592	4.772.565	1.633.854	107.834	-108.481.341
11-4-14	1	0	70.677.739	4.664.731	0	0	0
11-5-14	1	0	70.677.739	4.664.731	0	0	0
11-6-14	1	1.713.417	70.677.739	4.664.731	1.607.333	106.084	-96.960.752

FECHA ACTUAL	11-12-16
VIDA MEDIA A	
	0,40

VIDA MEDIA B	
	0,41

FECHA	PRINCIPAL DISPONIBLE	BONOS A	BONOS B	PRINCIPAL A	PRINCIPAL B	VIDA MEDIA	
				600000	450000		
11-7-14	1	0	69.070.406	4.558.647	0	0	
11-8-14	1	0	69.070.406	4.558.647	0	0	
11-9-14	1	1.547.326	69.070.406	4.558.647	1.488.679	58.647	-48.207.663
11-10-14	1	0	67.581.727	4.500.000	0	0	
11-11-14	1	0	67.581.727	4.500.000	0	0	
11-12-14	1	1.772.689	67.581.727	4.500.000	1.772.689	0	0
11-1-15	1	0	65.809.038	4.500.000	0	0	
11-2-15	1	0	65.809.038	4.500.000	0	0	
11-3-15	1	1.621.632	65.809.038	4.500.000	1.621.632	0	0
11-4-15	1	0	64.187.406	4.500.000	0	0	
11-5-15	1	0	64.187.406	4.500.000	0	0	
11-6-15	1	1.527.637	64.187.406	4.500.000	1.527.637	0	0
11-7-15	1	0	62.659.769	4.500.000	0	0	
11-8-15	1	0	62.659.769	4.500.000	0	0	
11-9-15	1	1.561.191	62.659.769	4.500.000	1.561.191	0	0
11-10-15	1	0	61.098.578	4.500.000	0	0	
11-11-15	1	0	61.098.578	4.500.000	0	0	
11-12-15	1	1.569.352	61.098.578	4.500.000	1.569.352	0	0
11-1-16	1	0	59.529.227	4.500.000	0	0	
11-2-16	1	0	59.529.227	4.500.000	0	0	
11-3-16	1	1.679.394	59.529.227	4.500.000	1.679.394	0	0
11-4-16	1	0	57.849.833	4.500.000	0	0	
11-5-16	1	0	57.849.833	4.500.000	0	0	
11-6-16	1	1.509.330	57.849.833	4.500.000	1.509.330	0	0
11-7-16	1	0	56.340.502	4.500.000	0	0	
11-8-16	1	0	56.340.502	4.500.000	0	0	
11-9-16	1	198.017	56.340.502	4.500.000	198.017	0	0
11-10-16	1	0	56.142.485	4.500.000	0	0	
11-11-16	1	0	56.142.485	4.500.000	0	0	

FECHA ACTUAL	11-12-16
VIDA MEDIA A	
	0,40

VIDA MEDIA B	
	0,41

FECHA		PRINCIPAL DISPONIBLE	BONOS A	BONOS B	PRINCIPAL A	PRINCIPAL B	VIDA MEDIA
				600000	450000		
11-12-16	1	2.746.002	56.142.485	4.500.000	2.746.002	0	0
11-1-17	1	0	53.396.483	4.500.000	0	0	0
11-2-17	1	0	53.396.483	4.500.000	0	0	0
11-3-17	1	2.637.654	53.396.483	4.500.000	2.637.654	0	0
11-4-17	1	0	50.758.830	4.500.000	0	0	0
11-5-17	1	0	50.758.830	4.500.000	0	0	0
11-6-17	1	55.256.592	50.758.830	4.500.000	50.758.830	4.500.000	819.000.000