



FONDO DE TITULIZACIÓN HIPOTECARIA BANESTO 4

Desirée Pérez Montoro
Analist
Santander de Titulización
Ciudad Grupo Santander
Ed. Encinar 28660 Boadilla del Monte
desperez@gruposantander.com
Tel: +34 91 289 32 78



FONDO DE TITULIZACIÓN HIPOTECARIA

BANESTO 4

DATA OF THE FUND

Constitution Date	December 15th, 2003	Paying Agent	Banesto	
Disbursement Date	December 18th, 2003	Negotiation Market	AIAF	
Final Date of Redemption	March 15th, 2038	Ratings Agencies	S&P	
Gestora	Santander de Titulización	Clasificación	Initial	Current
Seller MP's	Banesto	Class A	AAA	AAA
		Class B	A	A

SECURITIES ISSUED CHARGED TO THE FUND: SECURITISATION BONDS

CLASS PRIORITY	NUM BONDS	W.A.L	NOMINAL		
			INITIAL	CURRENT	%Act/In
Class A (ISIN=ES0339774004)	14.550	3,85	Nominal per Bond 100.000,00	41.526,80	
			Total Nominal	1.455.000.000,00	604.214.940,00 41,53%
Class B (ISIN=ES0339774012)	450	4,87	Nominal per Bond 100.000,00	100.000,00	
			Total Nominal	45.000.000,00	45.000.000,00 100,00%

REDEMPTION AND INTEREST OF THE BONDS					
Current			Next		
Payment Date of the Current Period June 16th, 2008			Next Payment Date September 15th, 2008		
	Redemption of the Bonds	Gross Interest	Interest Rate	Gross Interest Next Coupon	Net Interest Next Coupon
Class A	41.526,80 €	525,84 €	5,158%	541,44 €	443,98 €
Class B	0,00 €	1.328,60 €	5,608%	1.417,58 €	1.162,41 €
Bullet	0				

ASSET PURCHASED BY THE FUND: MORTGAGE PARTICIPATION

MORTGAGE PARTICIPACION	ISSUE DATE	CURRENT DATE
Number of MP's	19.736	11.069
MP's Outstanding to be amortised	1.500.001.687,69	649.214.906,47
MP's Outstanding per Loan to be amortised	76.003,33	58.651,63
Interest Rate	3,73%	5,42%

PREPAYMENT RATE	CURRENT SITUATION
Monthly Single Rate	10,15%
Average Monthly Single Rate	10,75%
Constant Prepayment Rate from Constitution	13,57%



**FONDO DE TITULIZACIÓN HIPOTECARIA
BANESTO 4**

**QUARTERLY BONDS PAYOUT REPORT
JUNE 16TH, 2008**

BONDS. PRINCIPAL	
Previous Balance	674.784.382,50 €
Principal Amortised	25.569.442,50 €
Outstanding Balance	649.214.940,00 €
% of Initial Balance	43,28%
Principal Accrued not paid	0,00 €

CUMULATIVE INTEREST PAID	
Bond Holders as of Previous Payment Date	126.731.047,50 €
Interest paid on June 16th,2008	8.248.842,00 €
Cumulative interest paid to Bond to Bond Holders up to Date	134.979.889,50 €

DATA	
Determination Date	June 09th, 2008
Payment Date	June 16th, 2008
Last Payment Date	March 17th, 2008
Number of Days (Act/360)	91
3 Months Euribor(%)	4,958%
Next Payment Date	September 15th, 2008

RESIDUAL LIFE (YEARS)		
	Decemb 18th, 2003	June 16th, 2008
Class A	8,9	3,85
Class B	16,8	4,87



**FONDO DE TITULIZACIÓN HIPOTECARIA
BANESTO 4**

**QUATERLY COLLATERAL REPORT
JUNE 16TH, 2008**

PRINCIPAL	
Previous Balance	674.784.360,80 €
Principal Amortised	25.569.454,33 €
Outstanding Balance	649.214.906,47 €
Number of Mortgage Participation	11.069
LTV	51,12%

INTEREST	
Interest received during relevant period	8.931.708,32 €
Interest accrued during relevant period	9.004.151,87 €

PRINCIPAL BALANCE IN ARREARS					
PRINCIPAL BALANCE IN ARREARS	UP TO 30 DAYS	30 TO 60 DAYS	60 TO 90 DAYS	90 TO 180 DAYS	> 180 DAYS
Principal Balance in Arrears	98.098,85 €	24.812,90 €	8.786,29 €	5.652,42 €	2.400,93 €
Interest accrued on PH's in Arrears	107.047,30 €	33.125,55 €	13.109,07 €	8.493,26 €	1.007,98 €
Outstanding Balance	26.280.387,61 €	6.174.065,99 €	1.860.898,32 €	1.773.271,30 €	269.425,50 €
Number of Mortgage Participation	417	90	21	23	7
% of Outstanding Balance	4,05%	0,95%	0,29%	0,27%	0,04%

LEGAL	
	82.799,76 €

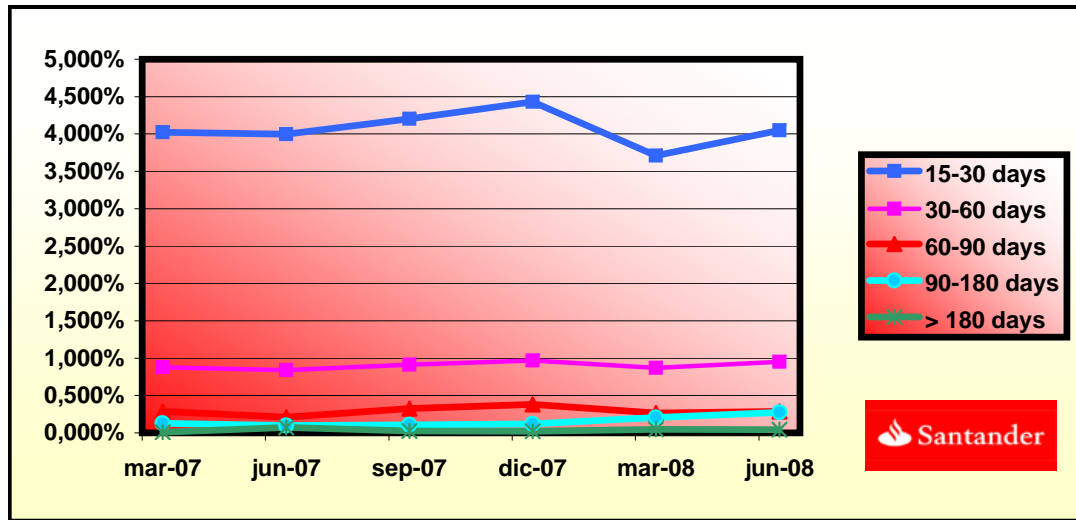
Legal: Loans in which the originator will take legal actions. This amount is included in the over 180 days in arrears bucket.



FONDO DE TITULIZACIÓN HIPOTECARIA
BANESTO 4

HISTORICAL ARREARS REPORT
JUNE 16TH, 2008

Date	mar-07	jun-07	sep-07	dic-07	mar-08	jun-08
15-30 days	4,021%	3,998%	4,201%	4,430%	3,712%	4,048%
30-60 days	0,880%	0,840%	0,912%	0,970%	0,868%	0,951%
60-90 days	0,289%	0,210%	0,326%	0,380%	0,267%	0,287%
90-180 days	0,127%	0,098%	0,109%	0,120%	0,204%	0,273%
> 180 days	0,007%	0,071%	0,025%	0,020%	0,047%	0,042%





FONDO DE TITULIZACIÓN HIPOTECARIA
BANESTO 4

QUARTERLY REPORT - ALLOCATION OF CASH
JUNE 16TH, 2008

TOTAL CASH RECEIVED END OF PERIOD	34.674.636,38 €
a) CASH RECEIVED - PRINCIPAL	
Amortisation of MG's	25.422.618,99 €
b) CASH RECEIVED - INTEREST	
Interest received from MG's	8.931.708,32 €
Interest received under GIC	325.227,42 €
c) LEGAL	148.323,39 €
d) REG. PROCESS	-148.796,91 €
e) CONTENTIOUS	-4.444,83 €

TREASURY ACCOUNT STATEMENT	8.104.060,24 €
a) RELATED TO THE PRINCIPAL RESERVE FUND	
1. Previous Balance	6.747.843,61 €
2. Period utilization	-255.694,54 €
3. Outstanding Balance	6.492.149,06 €
b) RELATED TO THE SECONDARY RESERVE FUND	
1. Previous Balance	1.631.088,27 €
2. Period utilization	-19.177,09 €
3. Outstanding Balance	1.611.911,18 €
c) WITHHOLDING ON BONDS INTEREST TO BE PAID	0,00 €

TOTAL CASH PAID END OF PERIOD	34.674.636,38 €
1. Current Expenses	46.562,70 €
2.1 Swap Payment	-7.650.935,57 €
2.2 Swap Collection	7.490.006,22 €
3. Interest paid to Class A Bondholders	7.650.972,00 €
4.1 Redemption BTH's A	25.569.442,50 €
4.2 Redemption BTH's B	0,00 €
5.1 Swap Payment	535.183,61 €
5.2 Swap Collection	-597.870,00 €
6. Interest paid to Class B Bondholders	597.870,00 €
7. Interest paid on Subordinated Loan A	97.575,72 €
8. Repayment of Subordinated Loan A	274.871,63 €
9. Fixed Fee in favour of Banesto	6.000,00 €
10. Variable Fee in favour Banesto	929.829,20 €
11. Utilizations of Principal and Secondary Reserve Fund	-274.871,63 €



**FONDO DE TITULIZACIÓN HIPOTECARIA
BANESTO 4**

**CREDIT ENHACEMENT AND SUBORDINATED LOAN
JUNE 16TH, 2008**

CREDIT ENHACEMENT		
CONCEPTS	Decemb 18th, 2003	June 16th, 2008
Subordinated Issue	3,00%	6,93%
Principal Reserve Fund	15.000.000€ (1,00%)	6.492.149,06 (1,00%)
Secondary Reserve Fund	2.250.000€ (0,15%)	1.611.911,18€ (0,25%)
Excess spread	0,65%	0,65%

SUBORDINATED LOAN		
CONCEPTS	Decemb 18th, 2003	June 16th, 2008
Total Outstanding	20.386.000,00 €	8.105.752,51 €
Interest Rate	3,10%	4,77%



**FONDO DE TITULIZACIÓN HIPOTECARIA
BANESTO 4**

TRIGGERS
JUNE 16TH, 2008

TRIGGERS BONDS	
1. IF 1.a) IS HIGHER THAN 1.b) THERE IS NO REDEMPTION OF CLASS B:	
1.a) MP'S IN ARREARS OVER 90 DAYS	2.042.696,80 €
1.b) 7% MP'S OUTSTANDING BALANCE	45.445.043,45 €

THIS LEVEL HAS NOT BEEN REACHED. NEVERTHELESS CLASS B HASN'T BEGINING THE REDEMPTION.

TRIGGERS PRINCIPAL AND SECONDARY RESERVE FUND	
1. IF 1.a) IS HIGHER THAN 1.b) THERE IS NO REDEMPTION PRINCIPAL AND SECONDARY RESERVE FUND:	
1.a) MP'S IN ARREARS OVER 90 DAYS	2.042.696,80 €
1.b) 2,5% MP'S OUTSTANDING BALANCE	16.230.372,66 €

THIS LEVEL HAS NOT BEEN REACHED, SO THE PRINCIPAL AND SECONDARY RESERVE FUND HAVE DECREASED

BANESTO 4

Date	Real outstanding	1,21% Prepayment vector	Remaining at the end of the month	Average Single monthly mortality	CPR	Monthly Single monthly mortality	CPR	Outstanding after prepayment
1	1.500.000.000,0		100,00%	100,00%			10,75%	1.500.000.000,00
2	1.495.729.806,1	1.484.079.397,59	98,79%	99,22%	0,78%	8,96%	0,78%	1.477.655.737,15
3	1.491.447.086,3	1.467.151.720,99	97,60%	98,37%	0,82%	9,38%	0,86%	1.455.620.229,00
4	1.487.151.803,8	1.448.706.233,63	96,42%	97,41%	0,87%	9,95%	0,97%	1.433.889.388,64
5	1.482.843.921,9	1.425.170.063,73	95,25%	96,11%	0,99%	11,22%	1,34%	1.412.459.181,84
6	1.478.523.403,5	1.407.660.576,34	94,10%	95,21%	0,98%	11,12%	0,94%	1.391.325.626,35
7	1.474.190.211,6	1.386.380.191,70	92,97%	94,04%	1,02%	11,56%	1,22%	1.370.484.791,27
8	1.469.844.309,0	1.362.533.521,59	91,84%	92,70%	1,08%	12,19%	1,43%	1.349.932.796,34
9	1.465.485.658,4	1.344.717.088,04	90,73%	91,76%	1,07%	12,10%	1,01%	1.329.665.811,38
10	1.461.114.222,4	1.335.244.439,02	89,64%	91,39%	1,00%	11,32%	0,41%	1.309.680.055,59
11	1.456.729.963,5	1.314.658.386,81	88,55%	90,25%	1,02%	11,59%	1,25%	1.289.971.796,96
12	1.452.332.844,2	1.295.869.428,02	87,48%	89,23%	1,03%	11,69%	1,13%	1.270.537.351,65
13	1.447.922.826,6	1.276.785.759,00	86,43%	88,18%	1,04%	11,82%	1,17%	1.251.373.083,36
14	1.443.499.873,0	1.249.470.515,43	85,38%	86,56%	1,10%	12,48%	1,84%	1.232.475.402,73
15	1.439.063.945,4	1.230.544.342,13	84,35%	85,51%	1,11%	12,56%	1,21%	1.213.840.766,79
16	1.434.615.005,7	1.212.858.606,52	83,33%	84,54%	1,11%	12,57%	1,13%	1.195.465.678,29
17	1.430.153.015,9	1.189.310.534,68	82,32%	83,16%	1,15%	12,92%	1,64%	1.177.346.685,21
18	1.425.677.937,5	1.168.642.127,52	81,33%	81,97%	1,16%	13,09%	1,43%	1.159.480.380,12
19	1.421.189.732,2	1.147.357.322,96	80,35%	80,73%	1,18%	13,30%	1,51%	1.141.863.399,63
20	1.416.689.801,4	1.125.227.264,58	79,37%	79,43%	1,20%	13,54%	1,62%	1.124.493.566,80
21	1.412.176.670,8	1.104.796.032,79	78,42%	78,23%	1,22%	13,70%	1,50%	1.107.366.437,42
22	1.407.650.301,7	1.090.810.910,79	77,47%	77,49%	1,21%	13,56%	0,95%	1.090.478.777,35
23	1.403.110.655,3	1.071.533.241,87	76,53%	76,37%	1,22%	13,68%	1,45%	1.073.827.394,26
24	1.398.557.692,5	1.053.644.931,75	75,61%	75,34%	1,22%	13,74%	1,35%	1.057.409.137,15
25	1.393.991.374,4	1.036.110.993,49	74,69%	74,33%	1,23%	13,79%	1,34%	1.041.220.895,81
26	1.389.419.729,0	1.012.469.118,85	73,79%	72,87%	1,26%	14,09%	1,96%	1.025.265.553,17
27	1.384.834.673,4	996.130.174,83	72,90%	71,93%	1,26%	14,11%	1,29%	1.009.533.999,59
28	1.380.236.168,2	978.998.721,89	72,02%	70,93%	1,26%	14,16%	1,39%	994.023.246,22
29	1.375.624.174,2	957.444.508,38	71,15%	69,60%	1,29%	14,39%	1,87%	978.730.342,90
30	1.370.998.651,6	935.849.620,04	70,29%	68,26%	1,31%	14,62%	1,93%	963.652.377,74
31	1.366.359.560,8	919.799.144,84	69,44%	67,32%	1,31%	14,64%	1,38%	948.786.476,58
32	1.361.716.074,1	902.616.654,99	68,60%	66,29%	1,32%	14,72%	1,53%	934.136.122,02
33	1.357.058.966,5	887.671.015,19	67,77%	65,41%	1,32%	14,72%	1,32%	919.692.060,11
34	1.352.388.198,0	877.497.210,61	66,95%	64,89%	1,30%	14,55%	0,80%	905.451.529,26
35	1.347.703.728,6	863.203.424,90	66,14%	64,05%	1,30%	14,55%	1,29%	891.411.803,74
36	1.343.005.518,1	849.769.844,98	65,34%	63,27%	1,30%	14,52%	1,21%	877.570.193,18
37	1.338.293.526,2	837.627.577,62	64,55%	62,59%	1,29%	14,46%	1,08%	863.924.042,16
38	1.333.579.740,2	821.156.807,85	63,77%	61,58%	1,30%	14,55%	1,62%	850.478.400,32
39	1.328.852.127,0	807.849.960,06	63,00%	60,79%	1,30%	14,54%	1,27%	837.222.847,04
40	1.324.110.646,2	797.164.189,97	62,24%	60,20%	1,29%	14,46%	0,97%	824.154.831,67
41	1.319.355.257,1	784.899.478,92	61,49%	59,49%	1,29%	14,43%	1,18%	811.271.836,72
42	1.314.585.918,8	774.269.957,25	60,75%	58,90%	1,28%	14,35%	1,00%	798.571.377,40
43	1.309.802.590,5	761.413.798,53	60,01%	58,13%	1,28%	14,36%	1,30%	786.051.001,27
44	1.305.026.174,7	751.728.622,28	59,29%	57,60%	1,27%	14,27%	0,91%	773.720.704,82
45	1.300.235.748,2	739.057.358,43	58,57%	56,84%	1,28%	14,28%	1,32%	761.565.417,83
46	1.295.431.269,7	732.073.694,96	57,86%	56,51%	1,26%	14,12%	0,58%	749.582.786,58
47	1.290.612.698,1	723.311.440,76	57,16%	56,04%	1,25%	14,02%	0,83%	737.770.487,97
48	1.285.779.992,1	713.797.327,86	56,47%	55,51%	1,24%	13,95%	0,94%	726.126.229,16
49	1.280.933.110,0	703.726.928,14	55,79%	54,94%	1,24%	13,91%	1,04%	714.647.747,16
50	1.276.097.465,1	692.501.801,57	55,12%	54,27%	1,24%	13,90%	1,22%	703.346.838,31
51	1.271.247.635,6	682.597.529,30	54,45%	53,70%	1,24%	13,86%	1,05%	692.206.969,96
52	1.266.383.580,0	674.784.360,80	53,79%	53,28%	1,23%	13,77%	0,76%	681.225.971,25
53	1.261.505.256,4	666.887.365,44	53,14%	52,86%	1,22%	13,68%	0,79%	670.401.699,59
54	1.256.612.623,1	657.598.455,52	52,50%	52,33%	1,21%	13,64%	1,01%	659.732.040,35
55	1.251.705.638,1	649.214.906,47	51,87%	51,87%	1,21%	13,57%	0,89%	649.214.906,47

15000000

DEAL 1.500.000.000
 MEZZ. DECLINN 10%
 MEZZ. STOPS DECLINN 1%
 VIDA RESIDUAL DESDE 8-jun-08

3,85

4,87

FECHA	PRINCIPAL SENIOR		MEZZANIE	SERIE A		SERIE B	
	AVAILABLE	NOTES		PRINCIPAL	VIDA MEDIA	PRINCIPAL	VIDA MEDIA
		1.455.000.000	45.000.000				
8-ene-04	0	1.455.000.000	45.000.000	0	0	0	0
8-feb-04	1	0	1.455.000.000	45.000.000	0	0	0
8-mar-04	1	66.110.611	1.455.000.000	45.000.000	66.110.611	-102.669.779.446	0
8-abr-04	1	0	1.388.889.389	45.000.000	0	0	0
8-may-04	1	0	1.388.889.389	45.000.000	0	0	0
8-jun-04	1	63.404.597	1.388.889.389	45.000.000	63.404.597	-92.634.116.761	0
8-jul-04	1	0	1.325.484.791	45.000.000	0	0	0
8-ago-04	1	0	1.325.484.791	45.000.000	0	0	0
8-sep-04	1	60.804.736	1.325.484.791	45.000.000	60.804.736	-83.241.683.143	0
8-oct-04	1	0	1.264.680.056	45.000.000	0	0	0
8-nov-04	1	0	1.264.680.056	45.000.000	0	0	0
8-dic-04	1	58.306.972	1.264.680.056	45.000.000	58.306.972	-74.516.310.511	0
8-ene-05	1	0	1.206.373.083	45.000.000	0	0	0
8-feb-05	1	0	1.206.373.083	45.000.000	0	0	0
8-mar-05	1	55.907.405	1.206.373.083	45.000.000	55.907.405	-66.417.997.216	0
8-abr-05	1	0	1.150.465.678	45.000.000	0	0	0
8-may-05	1	0	1.150.465.678	45.000.000	0	0	0
8-jun-05	1	53.602.279	1.150.465.678	45.000.000	53.602.279	-58.748.097.410	0
8-jul-05	1	0	1.096.863.400	45.000.000	0	0	0
8-ago-05	1	0	1.096.863.400	45.000.000	0	0	0
8-sep-05	1	51.384.622	1.096.863.400	45.000.000	51.384.622	-51.590.160.773	0
8-oct-05	1	0	1.045.478.777	45.000.000	0	0	0
8-nov-05	1	0	1.045.478.777	45.000.000	0	0	0
8-dic-05	1	49.257.882	1.045.478.777	45.000.000	49.257.882	-44.972.445.845	0
8-ene-06	1	0	996.220.896	45.000.000	0	0	0
8-feb-06	1	0	996.220.896	45.000.000	0	0	0
8-mar-06	1	47.197.650	996.220.896	45.000.000	47.197.650	-38.843.665.615	0
8-abr-06	1	0	949.023.246	45.000.000	0	0	0
8-may-06	1	0	949.023.246	45.000.000	0	0	0
8-jun-06	1	45.236.770	949.023.246	45.000.000	45.236.770	-33.068.078.604	0
8-jul-06	1	0	903.786.477	45.000.000	0	0	0
8-ago-06	1	0	903.786.477	45.000.000	0	0	0
8-sep-06	1	43.334.947	903.786.477	45.000.000	43.334.947	-27.691.031.336	0
8-oct-06	1	0	860.451.529	45.000.000	0	0	0
8-nov-06	1	0	860.451.529	45.000.000	0	0	0
8-dic-06	1	41.527.487	860.451.529	45.000.000	41.527.487	-22.757.062.933	0
8-ene-07	1	0	818.924.042	45.000.000	0	0	0
8-feb-07	1	0	818.924.042	45.000.000	0	0	0
8-mar-07	1	39.769.210	818.924.042	45.000.000	39.769.210	-18.214.298.403	0
8-abr-07	1	0	779.154.832	45.000.000	0	0	0
8-may-07	1	0	779.154.832	45.000.000	0	0	0
8-jun-07	1	38.103.830	779.154.832	45.000.000	38.103.830	-13.946.001.929	0
8-jul-07	1	0	741.051.001	45.000.000	0	0	0
8-ago-07	1	0	741.051.001	45.000.000	0	0	0

DEAL 1.500.000.000
 MEZZ. DECLINN 10%
 MEZZ. STOPS DECLINN 1%
 VIDA RESIDUAL DESDE 8-jun-08

3,85

4,87

FECHA	SERIE A			SERIE B				
	PRINCIPAL AVAILABLE	SENIOR NOTES	MEZZANIE NOTES	PRINCIPAL	VIDA MEDIA	PRINCIPAL	VIDA MEDIA	
8-sep-07	1	36.468.215	741.051.001	45.000.000	36.468.215	-9.992.290.826	0	0
8-oct-07	1	0	704.582.787	45.000.000	0	0	0	0
8-nov-07	1	0	704.582.787	45.000.000	0	0	0	0
8-dic-07	1	34.935.039	704.582.787	45.000.000	34.935.039	-6.393.112.212	0	0
8-ene-08	1	0	669.647.747	45.000.000	0	0	0	0
8-feb-08	1	0	669.647.747	45.000.000	0	0	0	0
8-mar-08	1	33.421.776	669.647.747	45.000.000	33.421.776	-3.074.803.385	0	0
8-abr-08	1	0	636.225.971	45.000.000	0	0	0	0
8-may-08	1	0	636.225.971	45.000.000	0	0	0	0
8-jun-08	1	32.011.065	636.225.971	45.000.000	32.011.065	0	0	0
8-jul-08	1	0	604.214.906	45.000.000	0	0	0	0
8-ago-08	1	0	604.214.906	45.000.000	0	0	0	0
8-sep-08	1	30.628.572	604.214.906	45.000.000	30.628.572	2.817.828.618	0	0
8-oct-08	1	0	573.586.335	45.000.000	0	0	0	0
8-nov-08	1	0	573.586.335	45.000.000	0	0	0	0
8-dic-08	1	29.330.179	573.586.335	45.000.000	29.330.179	5.367.422.824	0	0
8-ene-09	1	0	544.256.155	45.000.000	0	0	0	0
8-feb-09	1	0	544.256.155	45.000.000	0	0	0	0
8-mar-09	1	28.056.500	544.256.155	45.000.000	28.056.500	7.659.424.526	0	0
8-abr-09	1	0	516.199.655	45.000.000	0	0	0	0
8-may-09	1	0	516.199.655	45.000.000	0	0	0	0
8-jun-09	1	26.861.822	516.199.655	45.000.000	26.861.822	9.804.564.850	0	0
8-jul-09	1	0	489.337.834	45.000.000	0	0	0	0
8-ago-09	1	0	489.337.834	45.000.000	0	0	0	0
8-sep-09	1	25.680.072	489.337.834	45.000.000	25.680.072	11.735.792.983	0	0
8-oct-09	1	0	463.657.761	45.000.000	0	0	0	0
8-nov-09	1	0	463.657.761	45.000.000	0	0	0	0
8-dic-09	1	24.581.688	463.657.761	45.000.000	23.588.603	12.926.554.707	993.084	544.210.146
8-ene-10	1	0	440.069.158	44.006.916	0	0	0	0
8-feb-10	1	0	440.069.158	44.006.916	0	0	0	0
8-mar-10	1	23.498.396	440.069.158	44.006.916	21.362.178	13.629.069.739	2.136.218	1.362.906.974
8-abr-10	1	0	418.706.980	41.870.698	0	0	0	0
8-may-10	1	0	418.706.980	41.870.698	0	0	0	0
8-jun-10	1	22.488.567	418.706.980	41.870.698	20.444.152	14.924.230.666	2.044.415	1.492.423.067
8-jul-10	1	0	398.262.828	39.826.283	0	0	0	0
8-ago-10	1	0	398.262.828	39.826.283	0	0	0	0
8-sep-10	1	21.476.143	398.262.828	39.826.283	19.523.767	16.048.536.156	1.952.377	1.604.853.616
8-oct-10	1	0	378.739.061	37.873.906	0	0	0	0
8-nov-10	1	0	378.739.061	37.873.906	0	0	0	0
8-dic-10	1	20.548.987	378.739.061	37.873.906	18.680.897	17.055.658.974	1.868.090	1.705.565.897
8-ene-11	1	0	360.058.164	36.005.816	0	0	0	0
8-feb-11	1	0	360.058.164	36.005.816	0	0	0	0
8-mar-11	1	19.611.201	360.058.164	36.005.816	17.828.365	17.881.849.630	1.782.836	1.788.184.963
8-abr-11	1	0	342.229.800	34.222.980	0	0	0	0
8-may-11	1	0	342.229.800	34.222.980	0	0	0	0
8-jun-11	1	18.760.662	342.229.800	34.222.980	17.055.147	18.675.386.422	1.705.515	1.867.538.642
8-jul-11	1	0	325.174.652	32.517.465	0	0	0	0
8-ago-11	1	0	325.174.652	32.517.465	0	0	0	0
8-sep-11	1	17.869.078	325.174.652	32.517.465	16.244.616	19.282.359.171	1.624.462	1.928.235.917
8-oct-11	1	0	308.930.036	30.893.004	0	0	0	0
8-nov-11	1	0	308.930.036	30.893.004	0	0	0	0
8-dic-11	1	17.090.977	308.930.036	30.893.004	15.537.252	19.856.607.575	1.553.725	1.985.660.758
8-ene-12	1	0	293.392.785	29.339.278	0	0	0	0
8-feb-12	1	0	293.392.785	29.339.278	0	0	0	0
8-mar-12	1	16.245.350	293.392.785	29.339.278	14.768.500	20.218.076.623	1.476.850	2.021.807.662
8-abr-12	1	0	278.624.285	27.862.428	0	0	0	0
8-may-12	1	0	278.624.285	27.862.428	0	0	0	0
8-jun-12	1	15.535.551	278.624.285	27.862.428	14.123.228	20.634.035.968	1.412.323	2.063.403.597
8-jul-12	1	0	264.501.057	26.450.106	0	0	0	0
8-ago-12	1	0	264.501.057	26.450.106	0	0	0	0
8-sep-12	1	14.766.084	264.501.057	26.450.106	13.423.713	20.847.026.303	1.342.371	2.084.702.630
8-oct-12	1	0	251.077.344	25.107.734	0	0	0	0
8-nov-12	1	0	251.077.344	25.107.734	0	0	0	0
8-dic-12	1	14.118.577	251.077.344	25.107.734	12.835.070	21.100.854.851	1.283.507	2.110.085.485
8-ene-13	1	0	238.242.274	23.824.227	0	0	0	0
8-feb-13	1	0	238.242.274	23.824.227	0	0	0	0
8-mar-13	1	13.417.044	238.242.274	23.824.227	12.197.313	21.150.140.450	1.219.731	2.115.014.045
8-abr-13	1	0	226.044.961	22.604.496	0	0	0	0

15000000

DEAL 1.500.000.000
 MEZZ. DECLINN 10%
 MEZZ. STOPS DECLINN 1%
 VIDA RESIDUAL DESDE 8-jun-08

3,85

4,87

FECHA				SERIE A		SERIE B	
	PRINCIPAL AVAILABLE	SENIOR NOTES	MEZZANIE NOTES	PRINCIPAL	VIDA MEDIA	PRINCIPAL	VIDA MEDIA
8-may-13	1	0	226.044.961	22.604.496	0	0	0
8-jun-13	1	12.826.441	226.044.961	22.604.496	11.660.401	21.291.892.156	1.166.040
8-jul-13	1	0	214.384.560	21.438.456	0	0	0
8-ago-13	1	0	214.384.560	21.438.456	0	0	0
8-sep-13	1	12.206.205	214.384.560	21.438.456	11.096.550	21.283.183.390	1.109.655
8-oct-13	1	0	203.288.010	20.328.801	0	0	0
8-nov-13	1	0	203.288.010	20.328.801	0	0	0
8-dic-13	1	11.666.366	203.288.010	20.328.801	10.605.787	21.307.027.042	1.060.579
8-ene-14	1	0	192.682.222	19.268.222	0	0	0
8-feb-14	1	0	192.682.222	19.268.222	0	0	0
8-mar-14	1	11.109.124	192.682.222	19.268.222	10.099.203	21.198.227.816	1.009.920
8-abr-14	1	0	182.583.019	18.258.302	0	0	0
8-may-14	1	0	182.583.019	18.258.302	0	0	0
8-jun-14	1	10.615.187	182.583.019	18.258.302	7.356.885	16.118.934.873	3.258.302
8-jul-14	1	0	175.226.134	15.000.000	0	0	0
8-ago-14	1	0	175.226.134	15.000.000	0	0	0
8-sep-14	1	10.111.616	175.226.134	15.000.000	10.111.616	23.084.818.927	0
8-oct-14	1	0	165.114.518	15.000.000	0	0	0
8-nov-14	1	0	165.114.518	15.000.000	0	0	0
8-dic-14	1	9.659.397	165.114.518	15.000.000	9.659.397	22.931.408.349	0
8-ene-15	1	0	155.455.121	15.000.000	0	0	0
8-feb-15	1	0	155.455.121	15.000.000	0	0	0
8-mar-15	1	9.190.627	155.455.121	15.000.000	9.190.627	22.645.705.556	0
8-abr-15	1	0	146.264.494	15.000.000	0	0	0
8-may-15	1	0	146.264.494	15.000.000	0	0	0
8-jun-15	1	8.777.207	146.264.494	15.000.000	8.777.207	22.434.540.122	0
8-jul-15	1	0	137.487.288	15.000.000	0	0	0
8-ago-15	1	0	137.487.288	15.000.000	0	0	0
8-sep-15	1	152.487.288	137.487.288	15.000.000	137.487.288	364.066.337.435	15.000.000
							39.720.000.000