

F.T.A. U.C.I. 14

SANTANDER DE TITULIZACION, S.G.F.T, S.A.
C/ JUAN IGNACIO LUCA DE TENA 9-11
28033 MADRID
santanderdetitulizacion@gruposantander.es

NAME OF THE FUND: **F.T.A. U.C.I. 14**

INFORMATION AT: **QUARTER/SEMESTER:** September 20, 2022 - December 20, 2022 **YEAR:** 2022

Acting on behalf of Santander de Titulización S.G.F.T., S.A. as General Manager: **Signature:**
JUAN CARLOS BERZAL VALERO - GENERAL MANAGER

I. DATA OF THE FUND

Constitution Date	November 28th, 2005	Paying Agent	BANCO SANTANDER	
Disbursement Date	November 30th, 2005	Negotiation Market	AIAF	
Final Date of Redemption	June 20th, 2043	Ratings Agencies	FITCH RATINGS STANDARD & POORS	
Management Company	SANTANDER DE TITULIZACION, S.G.F.T, S.A.	Rating	Initial	Current
	UNIÓN DE CRÉDITOS INMOBILIARIOS, S.	CLASS A	AAA/AAA	A+ / AA
		CLASS B	A+/A-	BBB / BB
		CLASS C	BBB+/BBB	CCC / B -

II. SECURITIES ISSUED CHARGED TO THE FUND: SECURITISATION BONDS

CLASS PRIORITY ISIN CODE	NUM BONDS	NOMINAL			
			Initial	Current	%Act/In
CLASS A ES0338341003	13.775	Nominal per Bond	100.000,00	12.264,36	
		Total Nominal	1.377.500.000,00	168.941.559,00	12,26%
CLASS B ES0338341011	341	Nominal per Bond	100.000,00	100.000,00	
		Total Nominal	34.100.000,00	34.100.000,00	100,00 %
CLASS C ES0338341029	384	Nominal per Bond	100.000,00	100.000,00	
		Total Nominal	38.400.000,00	38.400.000,00	100,00 %

REDEMPTION AND INTEREST OF THE BONDS					
Current			Next		
Payment Date of the Current Period 20-December-2022			Next Payment Date 21-March-2023		
	Redemption of the Bonds	Gross Interest	Interest Rate	Gross Interest Next Coupon	Net Interest Next Coupon
CLASS A	792,28 €	40,03 €	2,197%	68,11 €	55,17 €
CLASS B	0,00 €	342,01 €	2,337%	590,74 €	478,50 €
CLASS C	0,00 €	415,31 €	2,627%	664,05 €	537,88 €
Accrued amortisation due not payed	0,00 €				
Scheduled Amortisation	NO				

III. ASSET PURCHASED BY THE FUND: CREDIT RIGHTS

CREDIT RIGHTS	ISSUE DATE	CURRENT DATE
Number of CR's	16.742	5.356
CR's Outstanding to be amortised	1.450.000.117,58 €	262.415.356,92 €
CR's Outstanding per Loan to be amortised	86.608,54 €	48.994,65 €
Interest Rate	4,08 %	2,13%

PREPAYMENT RATE	CURRENT SITUATION
Monthly Single Rate	5,56%
Average Monthly Single Rate	9,95%
Constant Prepayment Rate from Constitution	6,81%

F.T.A. U.C.I. 14**QUARTERLY BONDS PAYOUT REPORT**

December 20th, 2022

BONDS. PRINCIPAL	
Previous Balance	252.355.216,00 €
Principal Amortised	10.913.657,00 €
Outstanding Balance	241.441.559,00 €
% of Initial Balance	16,65%
Principal accrued and unpaid	0,00 €

INTEREST PAID	
CLASS A	551.413,25 €
CLASS B	116.625,41 €
CLASS C	159.479,04 €
Interest accrued and unpaid	0,00 €

DATA	
Pool Cut-Off Date	2022/12/13
Payment Date	2022/12/20
Last Payment Date	2022/09/20
Number of Days (Act/360)	91
Reference Interest Rate (%)	2,047%
Next Payment Date	2023/03/21

RESIDUAL LIFE (YEARS)		
	INITIAL	20 December 2022
CLASS A	4,81	2,75
CLASS B	8,13	4,00
CLASS C	8,13	4,00

F.T.A. U.C.I. 14**QUARTERLY COLLATERAL REPORT**

December 20th, 2022

PRINCIPAL	
Previous Balance	275.527.131,00 €
Principal Amortised	13.111.774,08 €
Outstanding Balance	262.415.356,92 €
Number of Credit Rights	5.356
LTV	41,55%

PRINCIPAL BALANCE IN ARREARS					
	UP to 30 DAYS	30 to 60 DAYS	60 to 90 DAYS	90 to 180 DAYS	MORE THAN 180 DAYS
Principal Balance in Arrears	32.426.62 €	42.635,41 €	32.975,38 €	78.124,05 €	3.605.294,52 €
Interest accrued on Credit Rights in Arrears	6.470,71 €	11.985,68 €	15.358,80 €	23.472,40 €	1.779.282,21 €
Outstanding Balance	8.156.085,36 €	5.114.537,76 €	2.540.032,37 €	3.161.930,47 €	10.433.002,30 €
Number of Credit Rights	115	72	38	48	97
% of Outstanding Balance	3,11%	1,95%	0,97%	1,20%	3,98%

WRITE OFF	
Cumulative WRITE OFF as of previous balance	23.171.991,27 €
Difference in Actual Period	-2.198.165,75 €
Cumulative WRITE OFF up to date	20.973.825,52 €

F.T.A. U.C.I. 14

QUARTERLY COLLATERAL REPORT

December 20th, 2022

TRANSITORY PROPERTIES	
Last balance	0,00 €
Difference in Actual Period	0,00 €
Current balance	0,00 €
Transitory properties CR's number	0

NET LOSSES	
Last balance	58.530.398,75 €
Difference in Actual Period	440.003,29 €
Current balance	58.970.402,04 €

F.T.A. U.C.I. 14

QUARTERLY REPORT - ALLOCATION OF CASH

December 20th, 2022

TOTAL CASH RECEIVED END OF PERIOD	14.248.291,50 €
CASH RECEIVED - PRINCIPAL	
Amortisation of Credit Rights	11.846.055,13 €
CASH RECEIVED - INTEREST	
Interest received from Credit Rights	1.133.672,43 €
Interest received under GIC	30.298,83 €
INCOMES/EXPENSES OF TRANSITORY PROPERTIES	1.151.965,40 €
INCOMES/EXPENSES OF INSURED PROPERTIES	86.820,00 €
OTHERS	-520,29 €

TREASURY ACCOUNT STATEMENT	11.757.228,36 €
PRINCIPAL RESERVE FUND	
Previous Balance	11.600.000,00 €
Difference	0,00 €
Outstanding Balance	11.600.000,00 €
WITHHOLDING TAXES	157.228,36 €

TOTAL CASH PAID END OF PERIOD	14.248.291,50 €
ORDINARY EXPENSES	6.231,50 €
MANAGEMENT FEE	11.954,03 €
SWAP PAYMENT	0,00 €
SWAP COLLECTION	0,00 €
INTEREST ON CLASS A BONDS	551.413,25 €
INTEREST ON CLASS B BONDS	116.625,41 €
INTEREST ON CLASS C BONDS	159.479,04 €
REDEMPTION ON CLASS A BONDS	10.913.657,00 €
INTEREST ON SUBORDINATED LOAN SANTANDER	24.828,23 €
INTEREST ON SUBORDINATED LOAN UCB	24.828,23 €
REDEMPTION ON SUBORDINATED LOAN SANTANDER	0,00 €
REDEMPTION ON SUBORDINATED LOAN UCB	0,00 €
FEES IN FAVOUR OF UCI	2.439.274,81 €
RESERVE FUND	0,00 €

F.T.A. U.C.I. 14

CREDIT ENHANCEMENT AND SUBORDINATED LOAN

December 20th, 2022

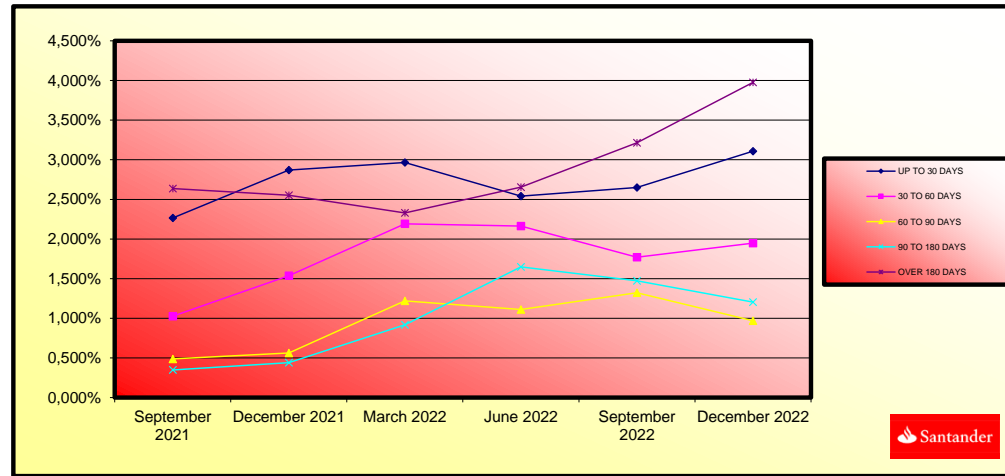
CREDIT ENHANCEMENT		
CONCEPTS	INITIAL	December 20th, 2022
SUBORDINATED ISSUE	72.500.000,00 € (5,00%)	72.500.000,00 € (27,63%)
PRINCIPAL RESERVE FUND	21.750.000,00 € (1,50 %)	11.600.000,00 € 4,42%

SUBORDINATED LOANS		
CONCEPTS	INITIAL	December 20th, 2022
SUBORDINATED LOAN SCH		
Total Outstanding Subordinated Loan	11.460.000,00 €	5.801.629,30 €
Interest Rate	3,132 %	2,677%
SUBORDINATED LOAN UCB		
Total Outstanding Subordinated Loan	11.460.000,00 €	5.801.629,31 €
Interest Rate	3,132 %	2,677%

**FONDO DE TITULIZACION DE ACTIVOS
UCI 14**

Report date: December 20th, 2022

ARREARS PERFORMANCE						
	September 2021	December 2021	March 2022	June 2022	September 2022	December 2022
UP TO 30 DAYS	2,266%	2,870%	2,965%	2,542%	2,651%	3,108%
30 TO 60 DAYS	1,027%	1,538%	2,192%	2,165%	1,770%	1,949%
60 TO 90 DAYS	0,488%	0,562%	1,221%	1,112%	1,322%	0,968%
90 TO 180 DAYS	0,348%	0,440%	0,919%	1,649%	1,472%	1,205%
OVER 180 DAYS	2,637%	2,552%	2,329%	2,654%	3,215%	3,976%



**FONDO DE TITULIZACION DE ACTIVOS
UCI 14**

TRIGGERS

Report date: December 20th, 2022

CLASS B AND CLASS C REDEMPTION		
IF 1) IS HIGHER THAN 2) CLASS B AND CLASS C ARE NOT REEDEMED		
1) DC'S IN ARREARS OVER 90 DAYS		34.568.758,29 €
2) 2% DC'S OUTSTANDING BALANCE		5.248.307,14 €
IF 3) IS HIGHER OR EQUAL THAN 4) CLASS B CAN BE REEDEMED		
3) CLASS B BALANCE		34.100.000,00 €
4) 4,70%* ALL CLASSES BALANCE		11.347.753,27 €
IF 5) IS HIGHER OR EQUAL THAN 6) CLASS C CAN BE REEDEMED		
5) CLASS C BALANCE		38.400.000,00 €
6) 5,30%* ALL CLASSES BALANCE		12.796.402,63 €

CURRENT ARREARS PERCENTAGE
13,17%

CLASSES B & C CANNOT BE REDEEMED

RESERVE FUNDS TRIGGERS	
IF 1) IS HIGHER THAN 2) RESERVE FUNDS WILL NOT BE REDUCED	
1) BONDS WEIGHTED AVERAGE RATE + 0,40%	0,650%
1) DC'S WEIGHTED AVERAGE RATE	2,13%

RESERVE FUND CAN'T BE REDEEMED DUE TO ARREARS > 90 DAYS > 1,25%

RESERVE FUND LEVELS		
CURRENT ARREARS PERCENTAGE < 0,75%	HIGHER OF 3% CR OUTSTANDING BALANCE 0,40% INITIAL OF THE BONDS	NA
CURRENT ARREARS PERCENTAGE BETWEEN 0,75% AND 1,25%	HIGHER OF 3% CR OUTSTANDING BALANCE 0,70% INITIAL OF THE BONDS	NA
CURRENT ARREARS PERCENTAGE > 1,25%	HIGHER OF 3% CR OUTSTANDING BALANCE 0,80% INITIAL OT THE BONDS	11.600.000,00 €

ARREARS OVER 90 DAYS ARE HIGHER THAN THE 1,25% LIMIT, THEREFORE, THE RESERVE FUND SHALL NOT BE REDEEMED.

INTEREST DEFERRAL FOR CLASS B AND C	
IF 1) IS HIGHER THAN 2)+3) CLASS B INTERESTS ARE DEFERRED TO POSITION 7°	
1) CLASS A OUTSTANDING BALANCE	179.855.216,00 €
2) CR OUTSTANDING BALANCE (EXCLUDING WRITE OFF)	238.070.625,36 €
3) REMAINING FUNDS AFTER PAYMENTS POINTS 1° TO 4°	25.162.067,31 €
IF 1) IS HIGHER THAN 2)+3) CLASS C INTERESTS ARE DEFERRED TO POSITION 8°	
1) CLASS A AND CLASS B OUTSTANDING BALANCE	213.955.216,00 €
2) CR OUTSTANDING BALANCE (EXCLUDING WRITE OFF)	238.070.625,36 €
3) REMAINING FUNDS AFTER PAYMENTS POINTS 1° TO 5°	25.002.588,27 €

CLASS B INTEREST ARE NOT DEFERRED

CLASS C INTEREST ARE NOT DEFERRED

LIQUIDITY REMAINING	
Current Balance	318.268,03 €

IF 1.a) IS HIGHER THAN 9,60% CR OUTSTANDING BALANCE, INTEREST ON CLASS B or C SHALL BE DEFERRED	NO
1.a) ACCRUED DEFAULT BALANCE WILL BE THE SUM OF i) + ii)	25.126.250,20 €
i). CR OUTSTANDING BALANCE WITH ARREARS HIGHER THAN 18 MONTHS	24.344.731,56 €
ii). CR OUTSTANDING BALANCE IN PROCESS OF EXECUTION OF GUARANTEES WITH ARREARS LOWER THAN 18 MONTHS	781.518,64 €
RATIO	1,73%

AGREEMENT	COUNTERPARTY	RATING AGENCY	MINIMUM RATING REQUIRED	CURRENT RATING
TREASURY ACCOUNT	BANCO SANTANDER	S&P FITCH	A-1 s/t F-1 s/t	A-1 s/t F-1 s/t*
PAYMENT AGENT	BANCO SANTANDER	S&P FITCH	A-1 s/t F-1 s/t	A-1 s/t F-1 s/t*

(*) Rating Deposit

THE COUNTERPARTY MEETS THE MINIMUM RATING REQUIRED.

LTV				
	OUTSTANDING BALANCE	% OUTSTANDING	NUMBER LOANS	% NUM LOANS
0,35-39,99	82.349.690,32 €	33,65%	1.545	42,63%
40,00-49,99	60.539.485,07 €	24,74%	888	24,50%
50,00-59,99	58.071.071,35 €	23,73%	755	20,83%
60,00-69,99	20.046.543,26 €	8,19%	212	5,85%
70,00-79,99	19.734.278,39 €	8,06%	191	5,27%
80,00-96,02	3.961.030,64 €	1,62%	33	0,91%
	244.702.099,03 €	100,00%	3.624	100,00%

F.T.A. U.C.I. 14

DEFINITIONS

December 20th, 2022

POOL CUT-OFF DATE Means the date in which the Gestora will carry out the necessary calculations, on behalf of the Fund, for the distribution of the available funds at this date, according with the Order of Priority of Payments.
All the information regarding the Assets (Outstanding Balance of the Credit Rights, arrears' tables, transitory properties, stratification tables, etc.) are referred to this mentioned date.

ACCRUED DEFAULT BALANCE Will be the balance of the loans which have outstanding instalments for longer than 18 months, or which have begun the process of execution of guarantees (if this process occurs previous to the 18 months from the first failure to pay), discounting the recovered amounts.

WRITE OFF Those loans that at a given date are unpaid for a period equal or higher to 12 or 18 months (according to Prospectus) of arrears in due payments.

NET LOSSES Those loans which the Originator considers that will not recover (net of recoveries).

TRANSITORY PROPERTIES Those assets in the balance of the Fund as a consequence of a judicial or non-judicial process.

Fecha	Saldo antes de Pago	Saldo Real	Vector de Prepago	Permanencia final de mes	Mortalidad Mensual	CPR	Mortalidad Mensual	CPR
Date	Outstanding before prepayment	Real outstanding	Prepayment vector	Remaining at the end of the month	Average single monthly	CPR	Monthly single monthly	CPR
			0,59%					9,95%
	1.450.000.117,58		100,00%	100,00%				
13-dic.-05	1.447.679.095,27	1.412.859.697,57	99,41%	97,59%	2,41%	25,33%	2,41%	25,33%
13-ene.-06	1.445.351.001,85	1.383.703.472,04	98,83%	95,73%	2,16%	23,01%	1,91%	20,62%
13-feb.-06	1.443.014.992,90	1.358.330.558,42	98,25%	94,13%	2,00%	21,49%	1,67%	18,35%
13-mar.-06	1.440.671.041,53	1.335.918.168,88	97,68%	92,73%	1,87%	20,27%	1,49%	16,48%
13-abr.-06	1.438.319.120,72	1.304.871.180,18	97,10%	90,72%	1,93%	20,84%	2,16%	23,09%
13-may.-06	1.435.959.203,38	1.277.085.439,49	96,54%	88,94%	1,94%	20,90%	1,97%	21,23%
13-jun.-06	1.433.591.262,32	1.249.875.785,04	95,97%	87,18%	1,94%	20,95%	1,97%	21,23%
13-jul.-06	1.431.217.099,17	1.226.356.145,95	95,41%	85,69%	1,91%	20,68%	1,72%	18,79%
13-ago.-06	1.428.834.863,87	1.200.300.098,88	94,85%	84,01%	1,92%	20,74%	1,96%	21,16%
13-sep.-06	1.426.444.528,96	1.186.433.304,60	94,29%	83,17%	1,83%	19,83%	0,99%	11,25%
13-oct.-06	1.424.046.066,92	1.169.720.299,10	93,74%	82,14%	1,77%	19,32%	1,24%	13,93%
13-nov.-06	1.421.639.450,10	1.154.361.390,51	93,19%	81,20%	1,72%	18,80%	1,15%	12,92%
13-dic.-06	1.419.224.650,79	1.131.478.048,20	92,64%	79,73%	1,73%	18,87%	1,82%	19,74%
13-ene.-07	1.416.803.527,62	1.110.445.302,06	92,10%	78,38%	1,73%	18,85%	1,69%	18,51%
13-feb.-07	1.414.374.172,62	1.093.184.364,90	91,56%	77,29%	1,70%	18,62%	1,39%	15,41%
13-mar.-07	1.411.936.557,82	1.071.351.008,79	91,02%	75,88%	1,71%	18,70%	1,83%	19,86%
13-abr.-07	1.409.490.655,12	1.049.481.349,87	90,49%	74,46%	1,72%	18,79%	1,87%	20,28%
13-may.-07	1.407.036.436,36	1.029.860.540,83	89,96%	73,19%	1,72%	18,78%	1,70%	18,58%
13-jun.-07	1.404.573.873,25	1.008.315.091,23	89,43%	71,79%	1,73%	18,89%	1,92%	20,76%
13-jul.-07	1.402.107.406,90	990.389.234,38	88,91%	70,64%	1,72%	18,83%	1,61%	17,65%
13-ago.-07	1.399.632.554,56	971.835.886,48	88,39%	69,44%	1,72%	18,82%	1,70%	18,59%
13-sep.-07	1.397.149.287,72	959.370.265,65	87,87%	68,67%	1,69%	18,54%	1,11%	12,51%
13-oct.-07	1.394.657.577,77	948.456.114,74	87,36%	68,01%	1,66%	18,22%	0,96%	10,94%
13-nov.-07	1.392.157.396,01	938.102.552,29	86,84%	67,38%	1,63%	17,91%	0,91%	10,43%
13-dic.-07	1.389.648.713,63	927.600.026,82	86,34%	66,75%	1,60%	17,64%	0,94%	10,73%
13-ene.-08	1.387.137.192,96	918.183.429,37	85,83%	66,19%	1,57%	17,34%	0,84%	9,58%
13-feb.-08	1.384.617.133,13	909.019.361,00	85,33%	65,65%	1,55%	17,06%	0,82%	9,38%
13-mar.-08	1.382.088.505,09	899.984.988,08	84,83%	65,12%	1,52%	16,79%	0,81%	9,33%
13-abr.-08	1.379.551.279,72	889.941.870,48	84,33%	64,51%	1,50%	16,59%	0,93%	10,65%
13-may.-08	1.377.005.427,78	883.416.847,95	83,83%	64,15%	1,47%	16,27%	0,55%	6,40%
13-jun.-08	1.374.450.919,94	874.610.003,26	83,34%	63,63%	1,45%	16,05%	0,81%	9,33%
13-jul.-08	1.371.895.084,42	866.773.579,99	82,86%	63,18%	1,42%	15,82%	0,71%	8,21%
13-ago.-08	1.369.330.559,06	861.898.915,20	82,37%	62,94%	1,39%	15,49%	0,38%	4,42%
13-sep.-08	1.366.757.314,32	860.348.893,55	81,89%	62,95%	1,35%	15,07%	-0,01%	-0,10%
13-oct.-08	1.364.175.320,54	859.274.462,83	81,41%	62,99%	1,31%	14,66%	-0,06%	-0,77%
13-nov.-08	1.361.584.547,98	848.467.920,19	80,93%	62,31%	1,31%	14,59%	1,07%	12,11%
13-dic.-08	1.358.984.966,80	843.106.288,68	80,46%	62,04%	1,28%	14,34%	0,44%	5,18%
13-ene.-09	1.356.395.192,20	837.519.966,47	79,98%	61,75%	1,26%	14,12%	0,47%	5,53%
13-feb.-09	1.353.796.612,37	834.295.210,99	79,52%	61,63%	1,23%	13,84%	0,19%	2,30%
13-mar.-09	1.351.189.197,37	830.432.921,08	79,05%	61,46%	1,21%	13,59%	0,27%	3,20%
13-abr.-09	1.348.572.917,16	824.580.462,75	78,59%	61,14%	1,19%	13,41%	0,51%	5,98%
13-may.-09	1.345.947.741,59	819.388.205,71	78,13%	60,88%	1,17%	13,22%	0,44%	5,11%
13-jun.-09	1.343.313.640,43	813.239.573,93	77,67%	60,54%	1,16%	13,07%	0,56%	6,47%
13-jul.-09	1.340.685.983,63	806.370.015,99	77,21%	60,15%	1,15%	12,95%	0,65%	7,53%
13-ago.-09	1.338.049.392,79	799.943.040,24	76,76%	59,78%	1,14%	12,82%	0,60%	6,98%
13-sep.-09	1.335.403.837,54	794.298.258,77	76,31%	59,48%	1,12%	12,67%	0,51%	5,94%
13-oct.-09	1.332.749.287,41	788.665.224,64	75,86%	59,18%	1,11%	12,54%	0,51%	5,97%
13-nov.-09	1.330.085.711,81	781.862.986,76	75,42%	58,79%	1,10%	12,44%	0,66%	7,68%
13-dic.-09	1.327.413.080,05	777.733.784,68	74,98%	58,59%	1,09%	12,27%	0,33%	3,86%
13-ene.-10	1.324.735.807,16	772.765.049,70	74,54%	58,33%	1,07%	12,13%	0,44%	5,13%
13-feb.-10	1.322.049.030,87	766.527.247,34	74,10%	57,98%	1,06%	12,04%	0,61%	7,03%
13-mar.-10	1.319.353.320,21	760.578.549,33	73,67%	57,65%	1,05%	11,94%	0,57%	6,67%
13-abr.-10	1.316.648.444,14	753.507.029,24	73,23%	57,23%	1,05%	11,87%	0,73%	8,37%
13-may.-10	1.313.934.371,49	746.097.411,88	72,81%	56,78%	1,04%	11,82%	0,78%	8,96%
13-jun.-10	1.311.211.071,00	741.465.330,72	72,38%	56,55%	1,03%	11,70%	0,41%	4,86%
13-jul.-10	1.308.482.797,29	732.469.793,73	71,95%	55,98%	1,03%	11,69%	1,01%	11,44%
13-ago.-10	1.305.745.247,45	725.003.588,79	71,53%	55,52%	1,03%	11,65%	0,81%	9,32%
13-sep.-10	1.302.998.389,95	722.192.567,12	71,11%	55,43%	1,01%	11,49%	0,18%	2,11%
13-oct.-10	1.300.242.193,12	715.076.816,00	70,70%	55,00%	1,01%	11,45%	0,78%	8,92%
13-nov.-10	1.297.476.625,23	710.127.040,95	70,28%	54,73%	1,00%	11,36%	0,48%	5,62%
13-dic.-10	1.294.701.654,41	705.548.183,05	69,87%	54,50%	0,99%	11,36%	0,43%	5,06%
13-ene.-11	1.291.918.822,88	698.797.512,36	69,46%	54,09%	0,99%	11,21%	0,74%	8,57%

Fecha	Saldo antes de Pago	Saldo Real	Vector de Prepago	Remanente final de mes	Monto Mensual	CPR	Monto Mensual	CPR
Date	Outstanding before prepayment	Real outstanding	Prepayment vector	Remaining at the end of the month	Average single monthly	CPR	Monthly single monthly	CPR
			0,59%					9,95%
13-feb.-11	1.289.126.529,73	693.841.621,90	69,05%	53,82%	0,98%	11,13%	0,49%	5,77%
13-mar.-11	1.286.324.742,78	689.284.335,73	68,65%	53,59%	0,97%	11,04%	0,44%	5,16%
13-abr.-11	1.283.513.429,76	684.215.424,26	68,25%	53,31%	0,96%	10,96%	0,52%	6,04%
13-may.-11	1.280.692.558,27	680.044.094,12	67,85%	53,10%	0,95%	10,87%	0,39%	4,59%
13-jun.-11	1.277.862.095,82	675.952.257,97	67,45%	52,90%	0,95%	10,78%	0,38%	4,48%
13-jul.-11	1.275.024.120,75	672.260.309,64	67,05%	52,73%	0,94%	10,68%	0,32%	3,83%
13-ago.-11	1.272.176.496,56	666.715.570,28	66,66%	52,41%	0,93%	10,63%	0,60%	7,00%
13-sep.-11	1.269.319.190,45	663.530.914,78	66,27%	52,27%	0,92%	10,52%	0,25%	3,00%
13-oct.-11	1.266.452.169,50	662.349.937,89	65,88%	52,30%	0,91%	10,38%	-0,05%	-0,58%
13-nov.-11	1.263.575.400,68	656.761.324,95	65,50%	51,98%	0,90%	10,33%	0,62%	7,17%
13-dic.-11	1.260.688.850,84	651.462.798,48	65,11%	51,68%	0,90%	10,28%	0,58%	6,74%
13-ene.-12	1.257.794.568,09	649.080.351,95	64,73%	51,60%	0,89%	10,17%	0,14%	1,63%
13-feb.-12	1.254.890.444,78	645.482.519,21	64,35%	51,44%	0,88%	10,09%	0,32%	3,82%
13-mar.-12	1.251.976.447,45	640.811.165,94	63,97%	51,18%	0,88%	10,03%	0,49%	5,75%
13-abr.-12	1.249.052.542,53	639.444.675,11	63,60%	51,19%	0,87%	9,91%	-0,02%	-0,24%
13-may.-12	1.246.118.696,33	635.421.343,72	63,23%	50,99%	0,86%	9,84%	0,40%	4,64%
13-jun.-12	1.243.174.875,05	631.525.490,52	62,86%	50,80%	0,85%	9,78%	0,38%	4,44%
13-jul.-12	1.240.236.310,21	630.093.187,15	62,49%	50,80%	0,84%	9,66%	-0,01%	-0,12%
13-ago.-12	1.237.287.754,24	623.348.876,30	62,12%	50,38%	0,84%	9,66%	0,83%	9,57%
13-sep.-12	1.234.329.173,18	623.311.880,45	61,76%	50,50%	0,83%	9,51%	-0,23%	-2,84%
13-oct.-12	1.231.360.532,95	619.550.759,76	61,40%	50,31%	0,82%	9,45%	0,36%	4,28%
13-nov.-12	1.228.381.799,34	617.260.008,04	61,04%	50,25%	0,82%	9,36%	0,13%	1,53%
13-dic.-12	1.225.392.938,04	615.339.831,56	60,68%	50,22%	0,81%	9,27%	0,07%	0,81%
13-ene.-13	1.222.396.048,18	611.642.824,87	60,32%	50,04%	0,80%	9,21%	0,36%	4,20%
13-feb.-13	1.219.388.968,90	608.679.979,31	59,97%	49,92%	0,80%	9,14%	0,24%	2,83%
13-mar.-13	1.216.371.665,55	606.876.055,60	59,62%	49,89%	0,79%	9,05%	0,05%	0,59%
13-abr.-13	1.213.344.103,37	603.331.887,04	59,27%	49,72%	0,78%	8,99%	0,34%	3,96%
13-may.-13	1.210.306.247,47	599.803.885,31	58,92%	49,56%	0,78%	8,94%	0,34%	3,95%
13-jun.-13	1.207.258.062,87	597.260.037,12	58,58%	49,47%	0,77%	8,86%	0,17%	2,05%
13-jul.-13	1.204.214.068,30	593.734.619,59	58,23%	49,30%	0,77%	8,81%	0,34%	3,99%
13-ago.-13	1.201.159.724,16	591.361.531,48	57,89%	49,23%	0,76%	8,74%	0,15%	1,74%
13-sep.-13	1.198.094.995,24	589.233.972,70	57,55%	49,18%	0,75%	8,66%	0,10%	1,25%
13-oct.-13	1.195.019.846,24	585.349.405,35	57,22%	48,98%	0,75%	8,62%	0,40%	4,74%
13-nov.-13	1.191.934.241,74	581.815.147,75	56,88%	48,81%	0,74%	8,57%	0,35%	4,08%
13-dic.-13	1.188.838.146,18	579.161.273,38	56,55%	48,72%	0,74%	8,51%	0,20%	2,34%
13-ene.-14	1.185.752.699,45	574.503.853,19	56,22%	48,45%	0,74%	8,49%	0,55%	6,36%
13-feb.-14	1.182.656.762,19	571.868.995,66	55,89%	48,35%	0,73%	8,43%	0,20%	2,35%
13-mar.-14	1.179.550.298,75	569.025.672,89	55,56%	48,24%	0,73%	8,38%	0,24%	2,79%
13-abr.-14	1.176.433.273,33	563.383.630,51	55,23%	47,89%	0,73%	8,38%	0,73%	8,41%
13-may.-14	1.173.305.650,02	558.969.821,49	54,91%	47,64%	0,72%	8,35%	0,52%	6,05%
13-jun.-14	1.170.167.392,80	557.057.130,45	54,59%	47,60%	0,72%	8,28%	0,07%	0,90%
13-jul.-14	1.167.043.023,56	552.651.199,40	54,27%	47,35%	0,72%	8,26%	0,53%	6,12%
13-ago.-14	1.163.908.031,47	548.730.910,55	53,95%	47,15%	0,71%	8,23%	0,44%	5,18%
13-sep.-14	1.160.762.380,40	546.226.006,69	53,63%	47,06%	0,71%	8,18%	0,19%	2,22%
13-oct.-14	1.157.606.034,12	542.066.006,62	53,32%	46,83%	0,71%	8,16%	0,49%	5,74%
13-nov.-14	1.154.438.956,26	538.418.477,80	53,01%	46,64%	0,70%	8,13%	0,40%	4,70%
13-dic.-14	1.151.261.110,34	535.835.529,43	52,70%	46,54%	0,70%	8,07%	0,21%	2,43%
13-ene.-15	1.148.090.486,41	532.150.531,52	52,39%	46,35%	0,70%	8,05%	0,41%	4,85%
13-feb.-15	1.144.909.082,36	529.549.132,97	52,08%	46,25%	0,69%	8,00%	0,21%	2,52%

Fecha	Saldo antes de Pago	Saldo Real	Vector de Prepago	Remanente final de mes	Mensual Mensual	CPR	Mensual Mensual	CPR
Date	Outstanding before prepayment	Real outstanding	Prepayment vector	Remaining at the end of the month	Average single monthly	CPR	Monthly single monthly	CPR
			0,59%					9,95%
13-mar.-15	1.141.716.861,53	526.961.583,23	51,77%	46,16%	0,69%	7,95%	0,21%	2,50%
13-abr.-15	1.138.513.787,16	522.261.123,56	51,47%	45,87%	0,69%	7,94%	0,61%	7,11%
13-may.-15	1.135.299.822,33	519.347.154,12	51,17%	45,75%	0,68%	7,90%	0,28%	3,27%
13-jun.-15	1.132.074.930,02	515.313.347,32	50,87%	45,52%	0,68%	7,88%	0,49%	5,77%
13-jul.-15	1.128.884.701,01	514.358.496,31	50,57%	45,56%	0,68%	7,81%	-0,10%	-1,17%
13-ago.-15	1.125.683.625,22	506.878.149,90	50,28%	45,03%	0,68%	7,86%	1,17%	13,21%
13-sep.-15	1.122.471.665,78	503.922.513,55	49,98%	44,89%	0,68%	7,82%	0,30%	3,53%
13-oct.-15	1.119.248.785,67	500.742.089,23	49,69%	44,74%	0,67%	7,79%	0,35%	4,06%
13-nov.-15	1.116.014.947,77	497.732.459,56	49,40%	44,60%	0,67%	7,76%	0,31%	3,69%
13-dic.-15	1.112.770.114,82	495.037.185,61	49,11%	44,49%	0,67%	7,72%	0,25%	2,98%
13-ene.-16	1.109.514.249,44	491.224.419,03	48,82%	44,27%	0,67%	7,70%	0,48%	5,60%
13-feb.-16	1.106.247.314,11	487.794.387,92	48,53%	44,09%	0,66%	7,68%	0,41%	4,75%
13-mar.-16	1.102.969.271,21	484.755.204,09	48,25%	43,95%	0,66%	7,65%	0,33%	3,86%
13-abr.-16	1.099.680.082,96	480.925.247,68	47,97%	43,73%	0,66%	7,63%	0,49%	5,76%
13-may.-16	1.096.379.711,47	477.548.513,49	47,69%	43,56%	0,66%	7,61%	0,40%	4,73%
13-jun.-16	1.093.068.118,71	474.894.005,94	47,41%	43,45%	0,65%	7,57%	0,25%	3,01%
13-jul.-16	1.089.749.295,36	471.788.991,83	47,13%	43,29%	0,65%	7,55%	0,35%	4,13%
13-ago.-16	1.086.419.188,00	468.671.411,64	46,85%	43,14%	0,65%	7,52%	0,36%	4,19%
13-sep.-16	1.083.077.758,28	465.782.106,80	46,58%	43,01%	0,65%	7,49%	0,31%	3,66%
13-oct.-16	1.079.724.967,70	463.140.152,90	46,30%	42,89%	0,64%	7,46%	0,26%	3,06%
13-nov.-16	1.076.360.777,63	460.644.282,19	46,03%	42,80%	0,64%	7,43%	0,23%	2,70%
13-dic.-16	1.072.985.149,32	457.739.860,64	45,76%	42,66%	0,64%	7,40%	0,32%	3,75%
13-ene.-17	1.069.601.793,66	454.105.634,17	45,50%	42,46%	0,64%	7,39%	0,48%	5,61%
13-feb.-17	1.066.206.934,60	452.157.161,84	45,23%	42,41%	0,63%	7,34%	0,11%	1,34%
13-mar.-17	1.062.800.533,01	449.351.238,83	44,96%	42,28%	0,63%	7,31%	0,30%	3,56%
13-abr.-17	1.059.382.549,66	444.555.762,07	44,70%	41,96%	0,63%	7,32%	0,75%	8,62%
13-may.-17	1.055.952.945,16	442.516.292,45	44,44%	41,91%	0,63%	7,28%	0,14%	1,61%
13-jun.-17	1.052.511.680,01	439.877.293,01	44,18%	41,79%	0,63%	7,26%	0,27%	3,21%
13-jul.-17	1.049.084.810,77	437.481.965,40	43,92%	41,70%	0,62%	7,22%	0,22%	2,60%
13-ago.-17	1.045.646.290,17	435.219.556,42	43,66%	41,62%	0,62%	7,19%	0,19%	2,26%
13-sep.-17	1.042.196.078,60	432.319.010,84	43,41%	41,48%	0,62%	7,17%	0,34%	3,98%
13-oct.-17	1.038.734.136,30	429.524.736,56	43,15%	41,35%	0,62%	7,14%	0,32%	3,72%
13-nov.-17	1.035.260.423,41	426.807.010,33	42,90%	41,23%	0,61%	7,12%	0,30%	3,53%
13-dic.-17	1.031.774.899,89	424.679.497,28	42,65%	41,16%	0,61%	7,08%	0,16%	1,93%
13-ene.-18	1.028.278.693,95	421.789.127,94	42,40%	41,02%	0,61%	7,06%	0,34%	4,04%
13-feb.-18	1.024.770.600,91	419.699.776,34	42,15%	40,96%	0,61%	7,03%	0,15%	1,84%
13-mar.-18	1.021.250.580,35	417.250.175,52	41,90%	40,86%	0,60%	7,00%	0,24%	2,85%
13-abr.-18	1.017.718.591,73	413.909.773,09	41,66%	40,67%	0,60%	6,99%	0,46%	5,34%
13-may.-18	1.014.174.594,34	411.330.624,95	41,41%	40,56%	0,60%	6,97%	0,28%	3,26%
13-jun.-18	1.010.618.547,36	409.025.204,50	41,17%	40,47%	0,60%	6,94%	0,21%	2,50%
13-jul.-18	1.007.059.197,72	405.339.724,59	40,93%	40,25%	0,60%	6,93%	0,55%	6,41%
13-ago.-18	1.003.487.746,29	402.794.536,07	40,69%	40,14%	0,59%	6,91%	0,27%	3,24%
13-sep.-18	999.904.151,92	400.781.649,40	40,45%	40,08%	0,59%	6,88%	0,14%	1,70%
13-oct.-18	996.308.373,34	398.127.116,44	40,21%	39,96%	0,59%	6,86%	0,30%	3,59%
13-nov.-18	992.700.369,11	395.417.638,45	39,98%	39,83%	0,59%	6,84%	0,32%	3,77%
13-dic.-18	989.080.097,66	392.675.585,41	39,74%	39,70%	0,59%	6,82%	0,33%	3,89%
13-ene.-19	985.451.358,06	388.867.152,55	39,51%	39,46%	0,59%	6,82%	0,61%	7,03%
13-feb.-19	981.810.280,75	386.625.168,11	39,28%	39,38%	0,58%	6,79%	0,21%	2,47%
13-mar.-19	978.156.823,78	384.375.987,63	39,05%	39,30%	0,58%	6,77%	0,21%	2,50%
13-abr.-19	974.490.945,05	380.815.918,27	38,82%	39,08%	0,58%	6,76%	0,55%	6,44%
13-may.-19	970.812.602,34	377.806.967,31	38,59%	38,92%	0,58%	6,75%	0,41%	4,86%
13-jun.-19	967.121.753,26	375.572.547,21	38,37%	38,83%	0,58%	6,73%	0,21%	2,52%
13-jul.-19	963.434.593,01	372.964.944,41	38,14%	38,71%	0,58%	6,71%	0,31%	3,71%
13-ago.-19	959.734.896,41	370.597.149,64	37,92%	38,61%	0,58%	6,69%	0,25%	2,98%
13-sep.-19	956.022.620,84	368.782.750,58	37,70%	38,57%	0,57%	6,65%	0,10%	1,23%
13-oct.-19	952.297.723,53	365.342.939,63	37,47%	38,36%	0,57%	6,65%	0,55%	6,35%
13-nov.-19	948.560.161,58	363.103.177,29	37,25%	38,28%	0,57%	6,63%	0,22%	2,63%
13-dic.-19	944.809.891,91	360.845.702,73	37,04%	38,19%	0,57%	6,61%	0,23%	2,69%
13-ene.-20	941.062.148,16	358.420.741,00	36,82%	38,09%	0,57%	6,59%	0,28%	3,27%
13-feb.-20	937.301.662,07	354.277.021,55	36,60%	37,80%	0,57%	6,60%	0,76%	8,74%
13-mar.-20	933.528.390,34	351.659.300,92	36,39%	37,67%	0,57%	6,58%	0,34%	3,98%
13-abr.-20	929.742.289,48	349.407.262,25	36,18%	37,58%	0,56%	6,56%	0,24%	2,79%
13-may.-20	925.943.315,88	347.244.938,83	35,96%	37,50%	0,56%	6,54%	0,21%	2,50%
13-jun.-20	922.131.425,76	345.000.926,71	35,75%	37,41%	0,56%	6,52%	0,24%	2,79%
13-jul.-20	918.424.277,13	342.818.927,50	35,54%	37,33%	0,56%	6,50%	0,23%	2,74%
13-ago.-20	914.704.524,18	340.559.242,01	35,34%	37,23%	0,56%	6,48%	0,26%	3,02%
13-sep.-20	910.972.124,08	338.008.453,17	35,13%	37,10%	0,56%	6,47%	0,34%	4,03%
13-oct.-20	907.227.033,82	335.459.393,52	34,92%	36,98%	0,55%	6,45%	0,34%	4,06%
13-nov.-20	903.469.210,25	332.861.234,68	34,72%	36,84%	0,55%	6,44%	0,36%	4,26%
13-dic.-20	899.698.610,08	330.791.910,21	34,51%	36,77%	0,55%	6,42%	0,21%	2,43%
13-ene.-21	895.918.053,21	325.979.879,88	34,31%	36,39%	0,55%	6,45%	1,04%	11,78%
13-feb.-21	892.124.642,44	316.964.973,04	34,11%	35,53%	0,56%	6,56%	2,35%	24,84%
13-mar.-21	888.318.334,08	312.976.316,41	33,91%	35,23%	0,57%	6,58%	0,84%	9,58%
13-abr.-21	884.499.084,27	308.939.515,56	33,71%	34,93%	0,57%	6,60%	0,86%	9,88%
13-may.-21	880.666.849,01	305.709.889,57	33,51%	34,71%	0,57%	6,60%	0,61%	7,13%

Fecha	Saldo antes de Pago	Saldo Real	vector de Prepago	Remanente final de mes	Mensual Mensual	CPR	Mensual Mensual	CPR
Date	Outstanding before prepayment	Real outstanding	Prepayment vector	Remaining at the end of the month	Average single monthly	CPR	Monthly single monthly	CPR
			0,59%					9,95%
13-jun.-21	876.821.584,16	302.598.129,65	33,32%	34,51%	0,57%	6,60%	0,58%	6,78%
13-jul.-21	872.969.069,11	298.710.632,17	33,12%	34,22%	0,57%	6,62%	0,85%	9,73%
13-ago.-21	869.103.455,51	295.756.994,81	32,93%	34,03%	0,57%	6,62%	0,55%	6,39%
13-sep.-21	865.224.698,82	293.300.943,09	32,74%	33,90%	0,57%	6,60%	0,39%	4,53%
13-oct.-21	861.332.754,36	290.209.059,35	32,54%	33,69%	0,57%	6,61%	0,61%	7,05%
13-nov.-21	857.427.577,29	287.393.708,20	32,35%	33,52%	0,57%	6,60%	0,52%	6,05%
13-dic.-21	853.509.122,62	284.489.959,09	32,16%	33,33%	0,57%	6,60%	0,56%	6,47%
13-ene.-22	849.579.248,15	281.829.037,01	31,98%	33,17%	0,57%	6,60%	0,48%	5,58%
13-feb.-22	845.636.012,12	279.051.254,93	31,79%	33,00%	0,57%	6,60%	0,52%	6,11%
13-mar.-22	841.679.369,08	276.110.309,79	31,60%	32,80%	0,57%	6,60%	0,59%	6,84%
13-abr.-22	837.709.273,45	273.244.632,57	31,42%	32,62%	0,57%	6,60%	0,57%	6,62%
13-may.-22	833.725.679,50	270.267.210,55	31,23%	32,42%	0,57%	6,60%	0,62%	7,16%
13-jun.-22	829.728.541,33	265.946.822,95	31,05%	32,05%	0,57%	6,63%	1,12%	12,69%
13-jul.-22	825.727.804,83	260.455.406,29	30,87%	31,54%	0,58%	6,69%	1,59%	17,50%
13-ago.-22	821.713.465,82	255.269.002,23	30,69%	31,07%	0,58%	6,74%	1,51%	16,71%
13-sep.-22	817.685.478,05	252.355.139,73	30,51%	30,86%	0,58%	6,75%	0,65%	7,58%
13-oct.-22	813.643.795,13	249.230.109,52	30,33%	30,63%	0,58%	6,75%	0,75%	8,61%
13-nov.-22	809.588.370,49	243.819.888,64	30,15%	30,12%	0,59%	6,82%	1,68%	18,40%
13-dic.-22	805.519.157,41	241.441.531,40	29,97%	29,97%	0,59%	6,81%	0,48%	5,56%

Fecha	Principal disponible antes prepagado	Principal Disponible	Amortización de principal	Serie A	Serie B	Serie C	Amortización Serie A	Vida Media Serie A	Amortización Serie B	Vida Media Serie B	Amortización Serie C	Vida Media Serie C
Date	Principal Available before prepayment	Principal Available	Principal Redemption	Class A	Class B	Class C	Redemption Class A	Average Life Class A	Redemption Class B	Average Life Class B	Redemption Class C	Average Life Class C
	1.450.000.117,58							2,75		4,00		4,00
	1.447.679.095,27			1.377.500.000,00	34.100.000,00	38.400.000,00						
13-dic-05	0	0,00	0,00	1.377.500.000,00	34.100.000,00	38.400.000,00	0,00	0,00%	0,00	0,00%	0,00	0,00%
13-ene-06	1.445.351.001,85	0,00	0,00	1.377.500.000,00	34.100.000,00	38.400.000,00	0,00	0,00%	0,00	0,00%	0,00	0,00%
13-feb-06	1.443.014.992,00	0,00	0,00	1.377.500.000,00	34.100.000,00	38.400.000,00	0,00	0,00%	0,00	0,00%	0,00	0,00%
13-mar-06	1.440.671.041,53	1.407.196.672,15	42.803.445,43	1.377.500.000,00	34.100.000,00	38.400.000,00	42.803.445,43	-26191428261151,10%	0,00	0,00%	0,00	0,00%
13-abr-06	1.438.319.120,72	0,00	0,00	1.334.696.554,57	34.100.000,00	38.400.000,00	0,00	0,00%	0,00	0,00%	0,00	0,00%
13-may-06	1.435.959.203,38	0,00	0,00	1.334.696.554,57	34.100.000,00	38.400.000,00	0,00	0,00%	0,00	0,00%	0,00	0,00%
13-jun-06	1.433.591.262,32	1.375.807.896,07	31.388.776,08	1.334.696.554,57	34.100.000,00	38.400.000,00	31.388.776,08	-18918015340560,90%	0,00	0,00%	0,00	0,00%
13-jul-06	1.431.217.099,17	0,00	0,00	1.303.307.778,49	34.100.000,00	38.400.000,00	0,00	0,00%	0,00	0,00%	0,00	0,00%
13-ago-06	1.428.834.863,87	0,00	0,00	1.303.307.778,49	34.100.000,00	38.400.000,00	0,00	0,00%	0,00	0,00%	0,00	0,00%
13-sep-06	1.426.444.528,96	1.345.023.336,48	30.784.559,59	1.303.307.778,49	34.100.000,00	38.400.000,00	30.784.559,59	-18270636115224,70%	0,00	0,00%	0,00	0,00%
13-oct-06	1.424.046.066,92	0,00	0,00	1.272.523.218,90	34.100.000,00	38.400.000,00	0,00	0,00%	0,00	0,00%	0,00	0,00%
13-nov-06	1.421.639.450,10	0,00	0,00	1.272.523.218,90	34.100.000,00	38.400.000,00	0,00	0,00%	0,00	0,00%	0,00	0,00%
13-dic-06	1.419.224.650,79	1.314.826.829,23	30.196.507,25	1.272.523.218,90	34.100.000,00	38.400.000,00	30.196.507,25	-17646838839743,10%	0,00	0,00%	0,00	0,00%
13-ene-07	1.416.803.527,62	0,00	0,00	1.242.326.711,65	34.100.000,00	38.400.000,00	0,00	0,00%	0,00	0,00%	0,00	0,00%
13-feb-07	1.414.374.172,62	0,00	0,00	1.242.326.711,65	34.100.000,00	38.400.000,00	0,00	0,00%	0,00	0,00%	0,00	0,00%
13-mar-07	1.411.936.557,82	1.285.212.894,36	29.613.934,87	1.242.326.711,65	34.100.000,00	38.400.000,00	29.613.934,87	-17039858124748,30%	0,00	0,00%	0,00	0,00%
13-abr-07	1.409.490.655,12	0,00	0,00	1.212.712.776,78	34.100.000,00	38.400.000,00	0,00	0,00%	0,00	0,00%	0,00	0,00%
13-may-07	1.407.038.466,36	0,00	0,00	1.212.712.776,78	34.100.000,00	38.400.000,00	0,00	0,00%	0,00	0,00%	0,00	0,00%
13-jun-07	1.404.573.873,25	1.256.165.774,18	29.047.120,18	1.212.712.776,78	34.100.000,00	38.400.000,00	29.047.120,18	-16446473444149,80%	0,00	0,00%	0,00	0,00%
13-jul-07	1.402.107.406,90	0,00	0,00	1.183.665.656,60	34.100.000,00	38.400.000,00	0,00	0,00%	0,00	0,00%	0,00	0,00%
13-ago-07	1.399.632.554,56	0,00	0,00	1.183.665.656,60	34.100.000,00	38.400.000,00	0,00	0,00%	0,00	0,00%	0,00	0,00%
13-sep-07	1.397.149.287,72	1.227.687.018,92	28.478.755,26	1.183.665.656,60	34.100.000,00	38.400.000,00	28.478.755,26	-1586266677850,50%	0,00	0,00%	0,00	0,00%
13-oct-07	1.394.657.577,77	0,00	0,00	1.155.186.901,34	34.100.000,00	38.400.000,00	0,00	0,00%	0,00	0,00%	0,00	0,00%
13-nov-07	1.392.157.396,01	0,00	0,00	1.155.186.901,34	34.100.000,00	38.400.000,00	0,00	0,00%	0,00	0,00%	0,00	0,00%
13-dic-07	1.389.648.713,29	1.199.754.422,34	27.932.599,59	1.155.186.901,34	34.100.000,00	38.400.000,00	27.932.599,59	-1530426966464,60%	0,00	0,00%	0,00	0,00%
13-ene-08	1.387.137.192,96	0,00	0,00	1.127.254.304,76	34.100.000,00	38.400.000,00	0,00	0,00%	0,00	0,00%	0,00	0,00%
13-feb-08	1.384.617.133,13	0,00	0,00	1.127.254.304,76	34.100.000,00	38.400.000,00	0,00	0,00%	0,00	0,00%	0,00	0,00%
13-mar-08	1.382.088.505,09	1.172.372.611,83	27.381.810,51	1.127.254.304,76	34.100.000,00	38.400.000,00	27.381.810,51	-14753319505390,20%	0,00	0,00%	0,00	0,00%
13-abr-08	1.379.551.279,72	0,00	0,00	1.099.872.494,25	34.100.000,00	38.400.000,00	0,00	0,00%	0,00	0,00%	0,00	0,00%
13-may-08	1.377.005.427,78	0,00	0,00	1.099.872.494,25	34.100.000,00	38.400.000,00	0,00	0,00%	0,00	0,00%	0,00	0,00%
13-jun-08	1.374.450.919,94	1.145.516.964,18	26.855.647,65	1.099.872.494,25	34.100.000,00	38.400.000,00	26.855.647,65	-14222750997175,10%	0,00	0,00%	0,00	0,00%
13-jul-08	1.371.895.094,42	0,00	0,00	1.073.016.846,60	34.100.000,00	38.400.000,00	0,00	0,00%	0,00	0,00%	0,00	0,00%
13-ago-08	1.369.330.559,62	0,00	0,00	1.073.016.846,60	34.100.000,00	38.400.000,00	0,00	0,00%	0,00	0,00%	0,00	0,00%
13-sep-08	1.366.757.314,32	1.119.196.066,48	26.320.897,70	1.073.016.846,60	34.100.000,00	38.400.000,00	26.320.897,70	-13697395161051,40%	0,00	0,00%	0,00	0,00%
13-oct-08	1.364.175.320,54	0,00	0,00	1.046.695.948,90	34.100.000,00	38.400.000,00	0,00	0,00%	0,00	0,00%	0,00	0,00%
13-nov-08	1.361.584.547,98	0,00	0,00	1.046.695.948,90	34.100.000,00	38.400.000,00	0,00	0,00%	0,00	0,00%	0,00	0,00%
13-dic-08	1.358.984.966,80	1.093.381.951,02	25.814.115,46	1.046.695.948,90	34.100.000,00	38.400.000,00	25.814.115,46	-13198757236508,90%	0,00	0,00%	0,00	0,00%
13-ene-09	1.356.395.192,20	0,00	0,00	1.020.881.833,44	34.100.000,00	38.400.000,00	0,00	0,00%	0,00	0,00%	0,00	0,00%
13-feb-09	1.353.796.612,37	0,00	0,00	1.020.881.833,44	34.100.000,00	38.400.000,00	0,00	0,00%	0,00	0,00%	0,00	0,00%
13-mar-09	1.351.189.997,37	1.068.109.780,74	25.272.170,27	1.020.881.833,44	34.100.000,00	38.400.000,00	25.272.170,27	-1269421112827,20%	0,00	0,00%	0,00	0,00%
13-abr-09	1.348.572.917,16	0,00	0,00	995.609.663,16	34.100.000,00	38.400.000,00	0,00	0,00%	0,00	0,00%	0,00	0,00%
13-may-09	1.345.947.741,59	0,00	0,00	995.609.663,16	34.100.000,00	38.400.000,00	0,00	0,00%	0,00	0,00%	0,00	0,00%
13-jun-09	1.343.313.640,43	1.043.325.042,76	24.784.737,98	995.609.663,16	34.100.000,00	38.400.000,00	24.784.737,98	-12221354296768,20%	0,00	0,00%	0,00	0,00%
13-jul-09	1.340.685.983,63	0,00	0,00	970.824.925,18	34.100.000,00	38.400.000,00	0,00	0,00%	0,00	0,00%	0,00	0,00%
13-ago-09	1.338.049.392,79	0,00	0,00	970.824.925,18	34.100.000,00	38.400.000,00	0,00	0,00%	0,00	0,00%	0,00	0,00%
13-sep-09	1.335.403.837,54	1.019.054.254,70	24.270.788,07	970.824.925,18	34.100.000,00	38.400.000,00	24.270.788,07	-11744634346135,40%	0,00	0,00%	0,00	0,00%
13-oct-09	1.332.749.287,41	0,00	0,00	946.554.137,12	34.100.000,00	38.400.000,00	0,00	0,00%	0,00	0,00%	0,00	0,00%
13-nov-09	1.330.085.711,81	0,00	0,00	946.554.137,12	34.100.000,00	38.400.000,00	0,00	0,00%	0,00	0,00%	0,00	0,00%
13-dic-09	1.327.413.080,05	995.252.458,29	23.801.796,41	946.554.137,12	34.100.000,00	38.400.000,00	23.801.796,41	-11301092933574,40%	0,00	0,00%	0,00	0,00%
13-ene-10	1.324.735.607,16	0,00	0,00	922.752.340,71	34.100.000,00	38.400.000,00	0,00	0,00%	0,00	0,00%	0,00	0,00%
13-feb-10	1.322.049.030,87	0,00	0,00	922.752.340,71	34.100.000,00	38.400.000,00	0,00	0,00%	0,00	0,00%	0,00	0,00%
13-mar-10	1.319.353.320,21	971.920.539,42	23.331.918,87	922.752.340,71	34.100.000,00	38.400.000,00	23.331.918,87	-10868007809202,70%	0,00	0,00%	0,00	0,00%
13-abr-10	1.316.648.444,14	0,00	0,00	899.420.421,84	34.100.000,00	38.400.000,00	0,00	0,00%	0,00	0,00%	0,00	0,00%
13-may-10	1.313.934.371,49	0,00	0,00	899.420.421,84	34.100.000,00	38.400.000,00	0,00	0,00%	0,00	0,00%	0,00	0,00%
13-jun-10	1.311.211.071,00	949.040.470,72	22.880.068,71	899.420.421,84	34.100.000,00	38.400.000,00	22.880.068,71	-10447039371044,10%	0,00	0,00%	0,00	0,00%
13-jul-10	1.308.482.797,29	0,00	0,00	876.540.353,14	34.100.000,00	38.400.000,00	0,00	0,00%	0,00	0,00%	0,00	0,00%
13-ago-10	1.305.745.247,45	0,00	0,00	876.540.353,14	34.100.000,00	38.400.000,00	0,00	0,00%	0,00	0,00%	0,00	0,00%
13-sep-10	1.302.998.389,95	926.613.202,87	22.427.267,85	876.540.353,14	34.100.000,00	38.400.000,00	22.427.267,85	-10033959634668,00%	0,00	0,00%	0,00	0,00%
13-oct-10	1.300.242.193,12	0,00	0,00	854.113.085,29	34.100.000,00	38.400.000,00	0,00	0,00%	0,00	0,00%	0,00	0,00%
13-nov-10	1.297.476.625,23	0,00	0,00	854.113.085,29	34.100.000,00	38.400.000,00	0,00	0,00%	0,00	0,00%	0,00	0,00%
13-dic-10	1.294.701.654,41	904.621.254,35	21.991.948,52	854.113.085,29	34.100.000,00	38.400.000,00	21.991.948,52	-9639071035887,49%				

Date	Principal Available before prepayment	Principal Available	Principal Redemption	Class A	Class B	Class C	Redemption Class A	2.75		4.00		4.00	
								Average Life Class A	Redemption Class B	Average Life Class B	Redemption Class C	Average Life Class C	
13-jun-13	1	1,207,258,062.87	707,167,013.97	18,012,781.53	652,679,677.92	34,100,000.00	38,400,000.00	18,012,781.53	-6250435190078.42%	0,00	0,00%	0,00	0,00%
13-jul-13	0	1,204,214,068.30	0,00	0,00	634,666,896.39	34,100,000.00	38,400,000.00	0,00	0,00	0,00	0,00%	0,00	0,00%
13-ago-13	0	1,201,159,724.16	0,00	0,00	634,666,896.39	34,100,000.00	38,400,000.00	0,00	0,00	0,00	0,00%	0,00	0,00%
13-sep-13	1	1,198,094,995.24	689,533,885.90	17,633,128.07	634,666,896.39	34,100,000.00	38,400,000.00	17,633,128.07	-595647066221.15%	0,00	0,00%	0,00	0,00%
13-ene-13	0	1,195,019,946.24	0,00	0,00	617,033,768.32	34,100,000.00	38,400,000.00	0,00	0,00	0,00	0,00%	0,00	0,00%
13-nov-13	0	1,191,934,241.74	0,00	0,00	617,033,768.32	34,100,000.00	38,400,000.00	0,00	0,00	0,00	0,00%	0,00	0,00%
13-dic-13	1	1,188,838,146.18	672,248,080.81	17,285,805.09	617,033,768.32	34,100,000.00	38,400,000.00	17,285,805.09	-5681844133842.52%	0,00	0,00%	0,00	0,00%
13-ene-14	0	1,185,752,699.45	0,00	0,00	599,747,963.23	34,100,000.00	38,400,000.00	0,00	0,00	0,00	0,00%	0,00	0,00%
13-feb-14	0	1,182,656,762.19	0,00	0,00	599,747,963.23	34,100,000.00	38,400,000.00	0,00	0,00	0,00	0,00%	0,00	0,00%
13-mar-14	1	1,179,550,298.75	655,338,652.34	16,909,428.46	599,747,963.23	34,100,000.00	38,400,000.00	16,909,428.46	-5405944280112.11%	0,00	0,00%	0,00	0,00%
13-abr-14	0	1,176,433,273.33	0,00	0,00	582,838,534.76	34,100,000.00	38,400,000.00	0,00	0,00	0,00	0,00%	0,00	0,00%
13-may-14	0	1,173,305,650.02	0,00	0,00	582,838,534.76	34,100,000.00	38,400,000.00	0,00	0,00	0,00	0,00%	0,00	0,00%
13-jun-14	1	1,170,187,992.80	638,763,056.72	16,575,595.62	582,838,534.76	34,100,000.00	38,400,000.00	16,575,595.62	-5146722441368.17%	0,00	0,00%	0,00	0,00%
13-jul-14	0	1,167,043,023.56	0,00	0,00	566,262,939.14	34,100,000.00	38,400,000.00	0,00	0,00	0,00	0,00%	0,00	0,00%
13-ago-14	0	1,163,908,031.47	0,00	0,00	566,262,939.14	34,100,000.00	38,400,000.00	0,00	0,00	0,00	0,00%	0,00	0,00%
13-sep-14	1	1,160,762,380.40	622,554,823.49	16,208,233.23	566,262,939.14	34,100,000.00	38,400,000.00	16,208,233.23	-4883540671176.39%	0,00	0,00%	0,00	0,00%
13-oct-14	0	1,157,606,034.12	0,00	0,00	550,054,705.91	34,100,000.00	38,400,000.00	0,00	0,00	0,00	0,00%	0,00	0,00%
13-nov-14	0	1,154,438,956.26	0,00	0,00	550,054,705.91	34,100,000.00	38,400,000.00	0,00	0,00	0,00	0,00%	0,00	0,00%
13-dic-14	1	1,151,281,110.34	606,667,307.31	15,887,516.18	550,054,705.91	34,100,000.00	38,400,000.00	15,887,516.18	-4642332227615.24%	0,00	0,00%	0,00	0,00%
13-ene-15	0	1,148,080,986.41	0,00	0,00	534,167,189.73	34,100,000.00	38,400,000.00	0,00	0,00	0,00	0,00%	0,00	0,00%
13-feb-15	0	1,144,909,082.36	0,00	0,00	534,167,189.73	34,100,000.00	38,400,000.00	0,00	0,00	0,00	0,00%	0,00	0,00%
13-mar-15	1	1,141,716,861.53	591,122,720.16	15,544,587.15	534,167,189.73	34,100,000.00	38,400,000.00	15,544,587.15	-4402227081242.21%	0,00	0,00%	0,00	0,00%
13-abr-15	0	1,138,513,787.16	0,00	0,00	518,622,602.58	34,100,000.00	38,400,000.00	0,00	0,00	0,00	0,00%	0,00	0,00%
13-may-15	0	1,135,299,822.33	0,00	0,00	518,622,602.58	34,100,000.00	38,400,000.00	0,00	0,00	0,00	0,00%	0,00	0,00%
13-jun-15	1	1,132,074,930.02	575,886,489.00	15,236,231.16	518,622,602.58	34,100,000.00	38,400,000.00	15,236,231.16	-4174727337234.05%	0,00	0,00%	0,00	0,00%
13-jul-15	0	1,128,884,701.01	0,00	0,00	503,386,371.42	34,100,000.00	38,400,000.00	0,00	0,00	0,00	0,00%	0,00	0,00%
13-ago-15	0	1,125,683,625.22	0,00	0,00	503,386,371.42	34,100,000.00	38,400,000.00	0,00	0,00	0,00	0,00%	0,00	0,00%
13-sep-15	1	1,122,471,665.78	561,021,600.99	14,864,888.01	503,386,371.42	34,100,000.00	38,400,000.00	14,864,888.01	-393622234554.77%	0,00	0,00%	0,00	0,00%
13-oct-15	0	1,119,248,785.67	0,00	0,00	488,521,483.41	34,100,000.00	38,400,000.00	0,00	0,00	0,00	0,00%	0,00	0,00%
13-nov-15	0	1,116,014,947.77	0,00	0,00	488,521,483.41	34,100,000.00	38,400,000.00	0,00	0,00	0,00	0,00%	0,00	0,00%
13-dic-15	1	1,112,770,114.82	546,452,137.65	14,569,463.35	488,521,483.41	34,100,000.00	38,400,000.00	14,569,463.35	-3725411777567.31%	0,00	0,00%	0,00	0,00%
13-ene-16	1	1,109,514,249.44	0,00	0,00	473,952,020.07	34,100,000.00	38,400,000.00	0,00	0,00	0,00	0,00%	0,00	0,00%
13-feb-16	1	1,106,247,314.11	0,00	0,00	473,952,020.07	34,100,000.00	38,400,000.00	0,00	0,00	0,00	0,00%	0,00	0,00%
13-mar-16	1	1,102,969,271.21	532,172,671.28	14,279,466.36	473,952,020.07	34,100,000.00	38,400,000.00	14,279,466.36	-3521316405183.48%	0,00	0,00%	0,00	0,00%
13-abr-16	0	1,099,680,082.00	0,00	0,00	459,672,553.70	34,100,000.00	38,400,000.00	0,00	0,00	0,00	0,00%	0,00	0,00%
13-may-16	1	1,096,379,711.47	0,00	0,00	459,672,553.70	34,100,000.00	38,400,000.00	0,00	0,00	0,00	0,00%	0,00	0,00%
13-jun-16	1	1,093,068,118.71	518,177,871.04	13,994,800.24	459,672,553.70	34,100,000.00	38,400,000.00	13,994,800.24	-3322365576728.12%	0,00	0,00%	0,00	0,00%
13-jul-16	1	1,089,749,295.36	0,00	0,00	445,677,753.46	34,100,000.00	38,400,000.00	0,00	0,00	0,00	0,00%	0,00	0,00%
13-ago-16	1	1,086,419,188.00	0,00	0,00	445,677,753.46	34,100,000.00	38,400,000.00	0,00	0,00	0,00	0,00%	0,00	0,00%
13-sep-16	1	1,083,077,758.28	504,468,149.89	13,709,721.16	445,677,753.46	34,100,000.00	38,400,000.00	13,709,721.16	-3128558368328.94%	0,00	0,00%	0,00	0,00%
13-oct-16	1	1,079,724,967.70	0,00	0,00	431,968,032.31	34,100,000.00	38,400,000.00	0,00	0,00	0,00	0,00%	0,00	0,00%
13-nov-16	1	1,076,360,777.63	0,00	0,00	431,968,032.31	34,100,000.00	38,400,000.00	0,00	0,00	0,00	0,00%	0,00	0,00%
13-dic-16	1	1,072,985,149.06	491,032,573.16	13,435,573.16	431,968,032.31	34,100,000.00	38,400,000.00	13,435,573.16	-294373420252.22%	0,00	0,00%	0,00	0,00%
13-ene-17	1	1,069,601,793.66	0,00	0,00	418,532,458.58	34,100,000.00	38,400,000.00	0,00	0,00	0,00	0,00%	0,00	0,00%
13-feb-17	1	1,066,206,934.60	0,00	0,00	418,532,458.58	34,100,000.00	38,400,000.00	0,00	0,00	0,00	0,00%	0,00	0,00%
13-mar-17	1	1,062,800,533.01	477,871,177.46	13,161,398.70	418,532,458.58	34,100,000.00	38,400,000.00	13,161,398.70	-2765209866857.40%	0,00	0,00%	0,00	0,00%
13-abr-17	1	1,059,382,549.66	0,00	0,00	405,371,059.88	34,100,000.00	38,400,000.00	0,00	0,00	0,00	0,00%	0,00	0,00%
13-may-17	1	1,055,952,945.16	0,00	0,00	405,371,059.88	34,100,000.00	38,400,000.00	0,00	0,00	0,00	0,00%	0,00	0,00%
13-jun-17	1	1,052,511,680.01	464,973,794.48	12,897,382.98	405,371,059.88	34,100,000.00	38,400,000.00	12,897,382.98	-2591084241472.34%	0,00	0,00%	0,00	0,00%
13-jul-17	1	1,049,084,810.00	0,00	0,00	392,473,676.90	34,100,000.00	38,400,000.00	0,00	0,00	0,00	0,00%	0,00	0,00%
13-ago-17	1	1,045,646,290.17	0,00	0,00	392,473,676.90	34,100,000.00	38,400,000.00	0,00	0,00	0,00	0,00%	0,00	0,00%
13-sep-17	1	1,042,196,078.60	452,369,657.80	12,604,136.68	392,473,676.90	34,100,000.00	38,400,000.00	12,604,136.68	-2416213001405.23%	0,00	0,00%	0,00	0,00%
13-oct-17	1	1,038,734,136.30	0,00	0,00	379,869,540.22	34,100,000.00	38,400,000.00	0,00	0,00	0,00	0,00%	0,00	0,00%
13-nov-17	1	1,035,260,423.41	0,00	0,00	379,869,540.22	34,100,000.00	38,400,000.00	0,00	0,00	0,00	0,00%	0,00	0,00%
13-dic-17	1	1,031,774,899.89	440,019,041.59	12,350,616.21	379,869,540.22	34,100,000.00	38,400,000.00	12,350,616.21	-2255222519460.83%	0,00	0,00%	0,00	0,00%
13-ene-18	1	1,028,278,693.93	0,00	0,00	367,518,924.01	34,100,000.00	38,400,000.00	0,00	0,00	0,00	0,00%	0,00	0,00%
13-feb-18	1	1,024,770,800.91	0,00	0,00	367,518,924.01	34,100,000.00	38,400,000.00	0,00	0,00	0,00	0,00%	0,00	0,00%
13-mar-18	1	1,021,250,580.45	427,918,741.88	12,100,299.61	367,518,924.01	34,100,000.00	38,400,000.00	12,100,299.61	-2100612012174.22%	0,00	0,00%	0,00	0,00%
13-abr-18	1	1,017,718,591.73	0,00	0,00	355,418,624.40	34,100,000.00	38,400,000.00	0,00	0,00	0,00	0,00%	0,00	0,00%
13-may-18	1	1,014,174,594.34	0,00	0,00	355,418,624.40	34,100,000.00	38,400,000.00	0,00	0,00	0,00	0,00%	0,00	0,00%
13-jun-18	1	1,010,618,547.36	416,062,654.64	11,856,087.35	355,418,624.40	34,100,000.00	38,400,000.00	11,856,087.35	-1949140759776.03%	0,00	0,00%	0,00	0,00%
13-jul-18	1	1,007,059,197.72	0,00	0,00	343,562,537.06	34,100,000.00	38,400,000.00	0,00	0,00	0,00	0,00%	0,00	0,00%
13-ago-18	1	1,003,487,746.29	0,00	0,00	343,562,537.06	34,100,000.00	38,400,000.00	0,00	0,00	0,00	0,00%	0,00	0,00%
13-sep-18	1	999,904,151.92	404,456,968.72	11,605,685.92	343,562,537.06	34,100,000.00	38,400,000.00	11,605,685.92	-1801202454673.75%	0,00	0,00%	0,00	0,00%
13-oct-18	1	996,308,373.34	0,00	0,00	331,956,851.14	34,100,000.00	38,400,000.00	0,00	0,00	0,00	0,00%	0,00	0,00%
13-nov-18	1	992,700,369.11	0,00	0,00	331,956,851.14	34,100,000.00	38,400,000.00	0,00	0,00	0,00	0,00%	0,00	0

Date	Principal Available before prepayment	Principal Available	Principal Redemption	Class A	Class B	Class C	Redemption Class A	2.75		4.00		4.00	
								Average Life Class A	Redemption Class B	Average Life Class B	Redemption Class C	Average Life Class C	
13-may-21	1	880.666.849,01	0,00	0,00	228.736.229,27	34.100.000,00	38.400.000,00	0,00	0,00%	0,00	0,00%	0,00	0,00%
13-jun-21	1	876.821.584,16	292.140.964,08	9.095.382,77	228.736.229,27	34.100.000,00	38.400.000,00	9.095.382,77	-498426975639,70%	0,00	0,00%	0,00	0,00%
13-jul-21	1	872.969.069,11	0,00	0,00	219.640.846,50	34.100.000,00	38.400.000,00	0,00	0,00%	0,00	0,00%	0,00	0,00%
13-ago-21	1	869.103.455,51	0,00	0,00	219.640.846,50	34.100.000,00	38.400.000,00	0,00	0,00%	0,00	0,00%	0,00	0,00%
13-sep-21	1	865.224.698,82	283.238.714,11	8.902.249,97	219.640.846,50	34.100.000,00	38.400.000,00	8.902.249,97	-405942598736,18%	0,00	0,00%	0,00	0,00%
13-oct-21	1	861.332.754,36	0,00	0,00	210.738.596,53	34.100.000,00	38.400.000,00	0,00	0,00%	0,00	0,00%	0,00	0,00%
13-nov-21	1	857.427.577,29	0,00	0,00	210.738.596,53	34.100.000,00	38.400.000,00	0,00	0,00%	0,00	0,00%	0,00	0,00%
13-dic-21	1	853.509.122,62	274.520.229,07	8.718.485,04	210.738.596,53	34.100.000,00	38.400.000,00	8.718.485,04	-318224704018,89%	0,00	0,00%	0,00	0,00%
13-ene-22	1	849.579.248,15	0,00	0,00	202.020.111,49	34.100.000,00	38.400.000,00	0,00	0,00%	0,00	0,00%	0,00	0,00%
13-feb-22	1	845.636.012,12	0,00	0,00	202.020.111,49	34.100.000,00	38.400.000,00	0,00	0,00%	0,00	0,00%	0,00	0,00%
13-mar-22	1	841.679.369,08	265.983.898,32	8.536.330,75	202.020.111,49	34.100.000,00	38.400.000,00	8.536.330,75	-234749095645,04%	0,00	0,00%	0,00	0,00%
13-abr-22	1	837.709.273,45	0,00	0,00	193.483.780,74	34.100.000,00	38.400.000,00	0,00	0,00%	0,00	0,00%	0,00	0,00%
13-may-22	1	833.725.679,50	0,00	0,00	193.483.780,74	34.100.000,00	38.400.000,00	0,00	0,00%	0,00	0,00%	0,00	0,00%
13-jun-22	1	829.728.541,33	257.624.507,02	8.359.391,30	193.483.780,74	34.100.000,00	38.400.000,00	8.359.391,30	-152976860715,76%	0,00	0,00%	0,00	0,00%
13-jul-22	1	825.727.804,83	0,00	0,00	185.124.389,44	34.100.000,00	38.400.000,00	0,00	0,00%	0,00	0,00%	0,00	0,00%
13-ago-22	1	821.713.465,82	0,00	0,00	185.124.389,44	34.100.000,00	38.400.000,00	0,00	0,00%	0,00	0,00%	0,00	0,00%
13-sep-22	1	817.685.478,05	249.447.932,52	8.176.574,51	185.124.389,44	34.100.000,00	38.400.000,00	8.176.574,51	-74406828005,46%	0,00	0,00%	0,00	0,00%
13-oct-22	1	813.643.795,13	0,00	0,00	176.947.814,94	34.100.000,00	38.400.000,00	0,00	0,00%	0,00	0,00%	0,00	0,00%
13-nov-22	1	809.598.370,49	0,00	0,00	176.947.814,94	34.100.000,00	38.400.000,00	0,00	0,00%	0,00	0,00%	0,00	0,00%
13-dic-22	1	805.514.657,41	241.441.531,40	8.006.401,12	176.947.814,94	34.100.000,00	38.400.000,00	8.006.401,12	0,00%	0,00	0,00%	0,00	0,00%
13-ene-23	1	801.441.378,34	0,00	0,00	168.941.413,82	34.100.000,00	38.400.000,00	0,00	0,00%	0,00	0,00%	0,00	0,00%
13-feb-23	1	797.349.734,82	0,00	0,00	168.941.413,82	34.100.000,00	38.400.000,00	0,00	0,00%	0,00	0,00%	0,00	0,00%
13-mar-23	1	793.244.179,72	233.606.798,33	7.834.733,07	168.941.413,82	34.100.000,00	38.400.000,00	7.834.733,07	70512597650,90%	0,00	0,00%	0,00	0,00%
13-abr-23	1	789.124.665,72	0,00	0,00	161.106.680,75	34.100.000,00	38.400.000,00	0,00	0,00%	0,00	0,00%	0,00	0,00%
13-may-23	1	784.991.145,38	0,00	0,00	161.106.680,75	34.100.000,00	38.400.000,00	0,00	0,00%	0,00	0,00%	0,00	0,00%
13-jun-23	1	780.843.571,08	225.935.826,19	7.670.972,14	161.106.680,75	34.100.000,00	38.400.000,00	7.670.972,14	139611692892,42%	0,00	0,00%	0,00	0,00%
13-jul-23	1	776.702.343,83	0,00	0,00	153.435.708,61	34.100.000,00	38.400.000,00	0,00	0,00%	0,00	0,00%	0,00	0,00%
13-ago-23	1	772.547.036,41	0,00	0,00	153.435.708,61	34.100.000,00	38.400.000,00	0,00	0,00%	0,00	0,00%	0,00	0,00%
13-sep-23	1	768.377.600,94	218.443.053,35	7.492.772,84	153.435.708,61	34.100.000,00	38.400.000,00	7.492.772,84	20530197573,45%	0,00	0,00%	0,00	0,00%
13-oct-23	1	764.193.989,39	0,00	0,00	145.942.935,77	34.100.000,00	38.400.000,00	0,00	0,00%	0,00	0,00%	0,00	0,00%
13-nov-23	1	759.996.153,57	0,00	0,00	145.942.935,77	34.100.000,00	38.400.000,00	0,00	0,00%	0,00	0,00%	0,00	0,00%
13-dic-23	1	755.784.045,10	211.107.538,19	7.335.515,16	145.942.935,77	34.100.000,00	38.400.000,00	7.335.515,16	267746303490,99%	0,00	0,00%	0,00	0,00%
13-ene-24	1	751.566.751,31	0,00	0,00	138.607.420,61	34.100.000,00	38.400.000,00	0,00	0,00%	0,00	0,00%	0,00	0,00%
13-feb-24	1	747.335.118,73	0,00	0,00	138.607.420,61	34.100.000,00	38.400.000,00	0,00	0,00%	0,00	0,00%	0,00	0,00%
13-mar-24	1	743.089.098,59	203.933.884,36	7.173.653,83	138.607.420,61	34.100.000,00	38.400.000,00	7.173.653,83	327118614668,09%	0,00	0,00%	0,00	0,00%
13-abr-24	1	738.828.641,98	0,00	0,00	131.433.766,78	34.100.000,00	38.400.000,00	0,00	0,00%	0,00	0,00%	0,00	0,00%
13-may-24	1	734.553.699,82	0,00	0,00	131.433.766,78	34.100.000,00	38.400.000,00	0,00	0,00%	0,00	0,00%	0,00	0,00%
13-jun-24	1	730.264.222,86	196.911.465,80	7.022.418,56	131.433.766,78	34.100.000,00	38.400.000,00	7.022.418,56	384828537088,45%	0,00	0,00%	0,00	0,00%
13-jul-24	1	725.978.904,11	0,00	0,00	124.411.348,22	34.100.000,00	38.400.000,00	0,00	0,00%	0,00	0,00%	0,00	0,00%
13-ago-24	1	721.679.015,27	0,00	0,00	124.411.348,22	34.100.000,00	38.400.000,00	0,00	0,00%	0,00	0,00%	0,00	0,00%
13-sep-24	1	717.364.506,82	190.052.394,46	6.859.071,34	124.411.348,22	34.100.000,00	38.400.000,00	6.859.071,34	438990565543,38%	0,00	0,00%	0,00	0,00%
13-oct-24	1	713.035.329,03	0,00	0,00	117.552.276,88	34.100.000,00	38.400.000,00	0,00	0,00%	0,00	0,00%	0,00	0,00%
13-nov-24	1	708.691.432,04	0,00	0,00	117.552.276,88	34.100.000,00	38.400.000,00	0,00	0,00%	0,00	0,00%	0,00	0,00%
13-dic-24	1	704.332.785,90	183.338.566,94	6.713.827,52	117.552.276,88	34.100.000,00	38.400.000,00	6.713.827,52	490790791690,38%	0,00	0,00%	0,00	0,00%
13-ene-25	1	700.025.392,71	0,00	0,00	110.838.449,36	34.100.000,00	38.400.000,00	0,00	0,00%	0,00	0,00%	0,00	0,00%
13-feb-25	1	695.703.374,55	0,00	0,00	110.838.449,36	34.100.000,00	38.400.000,00	0,00	0,00%	0,00	0,00%	0,00	0,00%
13-mar-25	1	691.366.661,53	176.818.154,38	6.520.412,56	110.838.449,36	34.100.000,00	38.400.000,00	6.520.412,56	535325871585,62%	0,00	0,00%	0,00	0,00%
13-abr-25	1	687.015.203,68	0,00	0,00	104.318.036,80	34.100.000,00	38.400.000,00	0,00	0,00%	0,00	0,00%	0,00	0,00%
13-may-25	1	682.648.950,98	0,00	0,00	104.318.036,80	34.100.000,00	38.400.000,00	0,00	0,00%	0,00	0,00%	0,00	0,00%
13-jun-25	1	678.267.852,82	170.436.313,88	6.381.840,52	104.318.036,80	34.100.000,00	38.400.000,00	6.381.840,52	582662039238,30%	0,00	0,00%	0,00	0,00%
13-jul-25	1	674.103.446,20	0,00	0,00	97.936.196,28	34.100.000,00	38.400.000,00	0,00	0,00%	0,00	0,00%	0,00	0,00%
13-ago-25	1	669.924.880,59	0,00	0,00	97.936.196,28	34.100.000,00	38.400.000,00	0,00	0,00%	0,00	0,00%	0,00	0,00%
13-sep-25	1	665.732.107,87	164.362.554,32	6.073.759,54	97.936.196,28	34.100.000,00	38.400.000,00	6.073.759,54	610412833906,98%	0,00	0,00%	0,00	0,00%
13-oct-25	1	661.525.079,71	0,00	0,00	91.862.436,74	34.100.000,00	38.400.000,00	0,00	0,00%	0,00	0,00%	0,00	0,00%
13-nov-25	1	657.303.747,66	0,00	0,00	91.862.436,74	34.100.000,00	38.400.000,00	0,00	0,00%	0,00	0,00%	0,00	0,00%
13-dic-25	1	653.068.063,08	158.417.919,09	5.944.635,23	91.862.436,74	34.100.000,00	38.400.000,00	5.944.635,23	651532021548,79%	0,00	0,00%	0,00	0,00%
13-ene-26	1	648.818.982,85	0,00	0,00	85.917.801,51	34.100.000,00	38.400.000,00	0,00	0,00%	0,00	0,00%	0,00	0,00%
13-feb-26	1	644.555.455,34	0,00	0,00	85.917.801,51	34.100.000,00	38.400.000,00	0,00	0,00%	0,00	0,00%	0,00	0,00%
13-mar-26	1	640.277.432,04	152.600.702,27	5.817.216,81	85.917.801,51	34.100.000,00	38.400.000,00	5.817.216,81	689921913984,53%	0,00	0,00%	0,00	0,00%
13-abr-26	1	635.984.863,46	0,00	0,00	80.100.584,69	34.100.000,00	38.400.000,00	0,00	0,00%	0,00	0,00%	0,00	0,00%
13-may-26	1	631.677.700,15	0,00	0,00	80.100.584,69	34.100.000,00	38.400.000,00	0,00	0,00%	0,00	0,00%	0,00	0,00%
13-jun-26	1	627.355.892,48	146.907.780,99	5.692.921,28	80.100.584,69	34.100.000,00	38.400.000,00	5.692.921,28	727555340115,00%	0,00	0,00%	0,00	0,00%
13-jul-26	1	623.025.996,55	0,00	0,00	74.407.663,41	34.100.000,00	38.400.000,00	0,00	0,00%	0,00	0,00%	0,00	0,00%
13-ago-26	1	618.681.378,97	0,00	0,00	74.407.663,41	34.100.000,00	38.400.000,00	0,00	0,00%	0,00	0,00%	0,00	0,00%
13-sep-26	1	614.321.989,69	141.341.390,04	5.566.390,95	74.407.663,41	34.100.000,00	38.400.000,00	5.566.390,95	762595559530,95%	0,00	0,00%	0,00	0,00%
13-oct-26	1	609.947.778,49	0,00	0,00	68.841.272,46	34.100.000,00	38.400.000,00	0,00	0,00%	0,00	0,00%	0,00	0,00%
13-nov-26	1	605.558.694,98	0,00	0,00	68.841.272,46	34.100.000,00	38.400.000,00	0,00	0,00%	0,00	0,00%	0,00	0,00%
13-dic-26	1	601.154.688,57	0										