



F.T.H. HIPOTEBANSA XI

FRANCISCO FORTES CLAVERO

ANALYST

SANTANDER DE TITULIZACION, S.G.F.T, S.A.

CIUDAD GRUPO SANTANDER

28660 BOADILLA DEL MONTE

ffortes@gruposantander.com

Tel: 912893290



NAME OF THE FUND:

F.T.H. HIPOTEBANSA XI

INFORMATION AT:

QUARTER/SEMESTER:

May 18, 2015

-

August 17, 2015

YEAR:

2015

Acting on behalf of Santander de Titulización S.G.F.T., S.A. as General Manager:	Signature:
IGNACIO ORTEGA GAVARA - GENERAL MANAGER	

I. DATA OF THE FUND

Constitution Date	November 26, 2002	Paying Agent	BANCO SANTANDER	
Disbursement Date	November 29, 2002	Negotiation Market	AIAF	
Final Date of Redemption	February 15, 2035	Ratings Agencies	MOODY'S ESPAÑA	
			STANDARD & POORS	
Management Company	SANTANDER DE TITULIZACION, S.G.F.T, S.A.	Rating	Initial	Current
Credit Rights 's Seller	BANCO SANTANDER	CLASS A	Aaa/AAA	OE/AA
		CLASS B	A2/A	Óæ2/B-

II. SECURITIES ISSUED CHARGED TO THE FUND: SECURITISATION BONDS

CLASS PRIORITY ISIN CODE	NUM BONDS	NOMINAL			
			Initial	Current	%Act/In
CLASS A ES0338447008	10.408	Nominal per Bond	100.000,00	14.544,40	
		Total Nominal	1.040.800.000,00	151.378.115,20	14,54 %
CLASS B ES0338447016	212	Nominal per Bond	100.000,00	42.842,87	
		Total Nominal	21.200.000,00	9.082.688,44	42,84 %

REDEMPTION AND INTEREST OF THE BONDS					
Current			Next		
Payment Date of the Current Period August 17, 2015			Next Payment Date November 16, 2015		
	Redemption of the Bonds	Gross Interest	Interest Rate	Gross Interest Next Coupon	Net Interest Next Coupon
CLASS A	496,27 €	8,78 €	0,2160 %	7,94 €	6,39 €
CLASS B	1.461,84 €	49,39 €	0,4260 %	46,13 €	37,13 €
Accrued amortisation due not payed	0,00 €				
Scheduled Amortisation	NO				

III. ASSET PURCHASED BY THE FUND: CREDIT RIGHTS

CREDIT RIGHTS	ISSUE DATE	CURRENT DATE
Numbre of CR's	13.082	4.185
CR's Outstanding to be amortised	1.062.000.934,18	160.460.837,80
CR's Outstanding per Loan to be amortised	81.180,32	38.341,89
Interest Rate	4,46 %	1,51 %

PREPAYMENT RATE	CURRENT SITUATION
Monthly Single Rate	5,45 %
Average Monthly Single Rate	J,41 %
Constant Prepayment Rate from Constitution	8,93 %

CURRENT DELINQUENCY	Up to 1 month	From 1 to 6 months	Greater than 6 months
Debt Due (Principal + Interest)	4.856,60	43.127,26	2.303,90
Debt to be amortised	0,00	0,00	160.415.986,50
Total Debt	4.856,60	43.127,26	160.418.290,40

F.T.H. HIPOTEBANSA XI**QUARTERLY BONDS PAYOUT REPORT**

August 18, 2015

BONDS. PRINCIPAL	
Previous Balance	165.935.891,88 €
Principal Amortised	5.475.088,24 €
Outstanding Balance	160.460.803,64 €
% of Initial Balance	15,11%
Principal accrued and unpaid	0,00 €

INTEREST PAID	
CLASS A	91.382,24 €
CLASS B	10.470,68 €
Interest accrued and unpaid	0,00 €

DATA	
Determination Date	10/08/2015
Payment Date	17/08/2015
Last Payment Date	18/05/2015
Number of Days (Act/360)	91
Reference Interest Rate (%)	-0,024%
Next Payment Date	16/11/2015

RESIDUAL LIFE (YEARS)		
	INITIAL	17/08/2015
CLASS A	6,7	2,03
CLASS B	12,8	2,32

F.T.H. HIPOTEBANSA XI

QUARTERLY COLLATERAL REPORT

August 18, 2015

PRINCIPAL	
Previous Balance	165.935.890,49 €
Principal Amortised	5.475.052,69 €
Outstanding Balance	160.460.837,80 €
Number of Credit Rights	4.206
LTV	33,58%

INTEREST	
Interest received during relevant period	523.355,49 €
Interest accrued during relevant period	567.392,38 €

PRINCIPAL BALANCE IN ARREARS					
	UP to 30 DAYS	30 to 60 DAYS	60 to 90 DAYS	90 to 180 DAYS	> 180 DAYS
Principal Balance in Arrears	4.301,30 €	7.869,14 €	6.240,95 €	24.504,62 €	1.935,29 €
Interest accrued on Credit Rights in Arrears	555,30 €	1.036,85 €	1.047,68 €	2.428,02 €	368,61 €
Outstanding Balance	841.580,93 €	771.473,88 €	287.079,47 €	725.034,33 €	1.116.694,43 €
Number of Credit Rights	13	17	9	10	26
% of Outstanding Balance	0,52%	0,48%	0,18%	0,45%	0,70%

(1) This report does not include loans in arrears from 1 to 15 days, as it is considered a technical arrear with a high percentage of recovery.

F.T.H. HIPOTEBANSA XI

QUARTERLY COLLATERAL REPORT

August 18, 2015

CONTENTIOUS / JUDICIAL	
Last balance	985.215,89 €
Difference in Actual Period	235.989,05 €
Current balance	1.221.204,94 €
Contentious CR's number	28

TRANSITORY PROPERTIES	
Last balance	1.292.240,81 €
Difference in Actual Period	-54.149,52 €
Current balance	1.238.091,29 €
Transitory properties CR's number	18

NET LOSS	
Last balance	229.840,86 €
Difference in Actual Period	-4.911,45 €
Current balance	224.929,41 €

F.T.H. HIPOTEBANSA XI

QUARTERLY REPORT - ALLOCATION OF CASH

August 18, 2015

TOTAL CASH RECEIVED END OF PERIOD	6.044.903,42 €
CASH RECEIVED - PRINCIPAL	
Amortisation of Credit Rights	5.423.351,43 €
CASH RECEIVED - INTEREST	
Interest received from Credit Rights	523.355,49 €
Interest received under GIC	-3.801,85 €
CONTENTIOUS	61.827,42 €
INCOMES/EXPENSES OF TRANSTORY PROPERTIES	40.105,33 €
RESERVE FUNDS	0,00 €
OTHERS	65,60 €

TREASURY ACCOUNT STATEMENT	4.802.364,74 €
PRINCIPAL RESERVE FUND	
Previous Balance	1.717.891,79 €
Period utilization	0,00 €
Outstanding Balance	1.717.891,79 €
PRINCIPAL RESERVE FUND	
Previous Balance	3.084.472,95 €
Period utilization	0,00 €
Outstanding Balance	3.084.472,95 €
WITHHOLDING TAXES	0,00 €
ISSUE EXPENSES WITHHELD	0,00 €
OTHERS	0,00 €

TOTAL CASH PAID END OF PERIOD	6.044.903,42 €
ORDINARY EXPENSES	4.593,16 €
MANAGEMENT FEE	19.170,00 €
SWAP A COLLECTION	-91.408,24 €
SWAP A PAYMENT	361.876,11 €
SWAP B COLLECTION	-10.470,40 €
SWAP B PAYMENT	21.712,57 €
CLASS A INTEREST	91.382,24 €
CLASS A REDEMPTION	5.165.178,16 €
CLASS B REDEMPTION	309.910,08 €
CLASS B INTEREST	10.470,68 €
SUBORDINATED LOAN A INTEREST	11.007,45 €
SUBORDINATED LOAN B INTEREST	0,00 €
SUBORDINATED LOAN A REDEMPTION	0,00 €
SUBORDINATED LOAN B REDEMPTION	0,00 €
ADMINISTRATION FEE	6.852,79 €
VARIABLE FEE	144.628,82 €

F.T.H. HIPOTEBANSA XI

CREDIT ENHACEMENT AND SUBORDINATED LOAN

August 18, 2015

CREDIT ENHACEMENT		
CONCEPTS	INITIAL	August 18, 2015
SUBORDINATED ISSUE	2,00 %	5,66%
PRINCIPAL RESERVE FUND	10.620.000,00 € (1,00 %)	1.717.891,79 € 1,00%
SECONDARY RESERVE FUND	5.310.000,00 € (0,50 %)	3.084.472,95 € 1,92%

SUBORDINATED LOANS		
CONCEPTS	INITIAL	August 18, 2015
SUBORDINATED LOAN A		
Total Outstanding Subordinated Loan	17.045.178,00 €	4.804.216,20 €
Interest Rate	3,860 %	0,912%

F.T.H. HIPOTEBANSA XI

TRIGGERS OF THE MODEL

August 18, 2015

RESERVE FUND's TRIGGERS	
IF 1) IS HIGHER THAN 2) RESERVE FUNDS WILL NOT BE REDUCED	
1) 99% PREVIOUS BTA BALANCE	164.276.532,96 €
2) CREDIT RIGHTS OUTSTANDING BALANCE (ARREARS < 90 DAYS) + CR'S REDEMPTION	164.043.000,47 €

RESERVE FUND HAS BEEN REDUCED

BOND's TRIGGERS	
IF 1) IS HIGHER THAN 2) CLASS B IS NOT AMORTISED	
1) CREDIT RIGHTS IN ARREARS OVER 90 DAYS	1.841.728,76 €
2) 4% CREDIT RIGHTS OUTSTANDING BALANCE	6.418.433,51 €

CLASS B IS AMORTIZED

AGREEMENT	COUNTERPARTY	RATING AGENCY	MINIMUM RATING REQUIRED	CURRENT RATING
CUENTA TESORERÍA	BANCO SANTANDER	MOODYS	P-1 c/p	Baa1 l/p P-2 c/p
		S&P	A-1 c/p A l/p	BBB+ l/p A-2 c/p
SWAP	BANCO SANTANDER	MOODYS	A2 l/p P-1 c/p	Baa1 l/p P-2 c/p
		S&P	A- l/p	BBB+ l/p A-2 c/p

COUNTERPARTY DOES NOT HAVE THE MINIMUM RATING REQUIRED. TREASURY ACCOUNT HAS BEEN TRANSFERRED TO A COUNTERPARTY WITH MINIMUM RATING REQUIRED. SWAP DEPOSIT HAS BEEN DEPOSITED IN TREASURY ACCOUNT

F.T.H. HIPOTEBANSA XI

DEFINITIONS

August 18, 2015

DETERMINATION DATE Means the date in which the Gestora will carry out the necessary calculations, on behalf of the Fund, for the distribution of the available funds at this date, according with the Order of Priority of Payments.
All the information regarding the Assets (Outstading Balance of the Credit Rights, arrears' tables, transitory properties, stratiphication tables, etc.) are refered to this mentioned date.

NET LOSSES Those loans which the Originator considers that will not recover (net of recoveries).

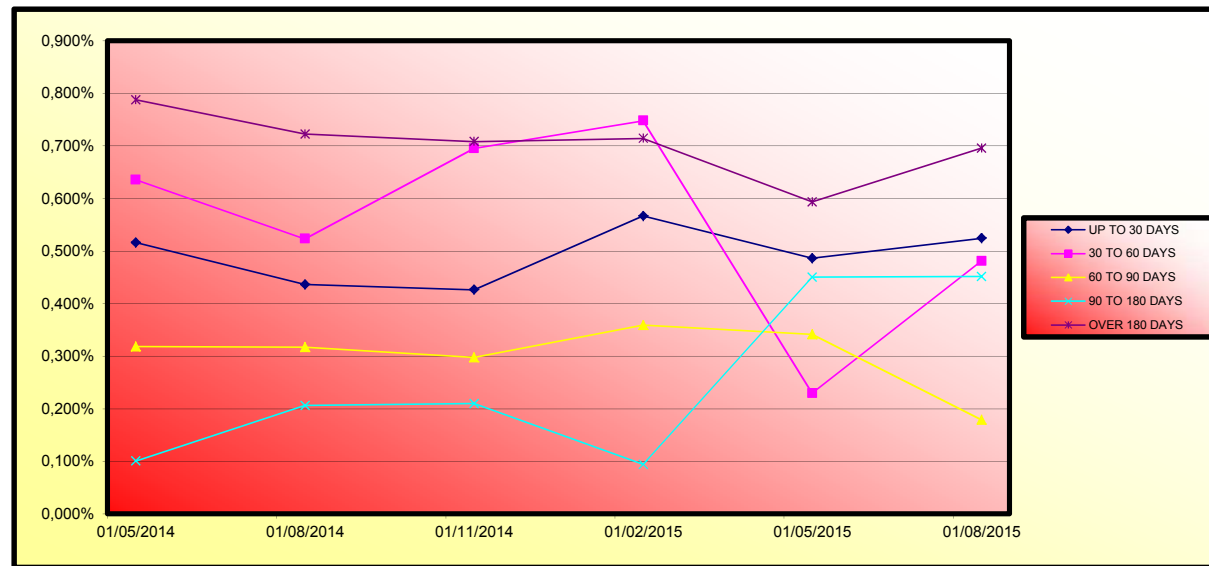
TRANSITORY PROPERTIES Those assets in the balance of the Fund as a consequence of a judicial or non-judicial process.

CONTENTIOUS / JUDICIAL Loans in which the Originator will take legal actions. This amount is included in the different buckets in arrears.

**FONDO DE TITULIZACIÓN DE ACTIVOS
HIPOTEBANSA 11**

Report date: August 17th 2015

ARREARS PERFORMANCE						
	08/05/2014	08/08/2014	07/11/2014	08/02/2015	08/05/2015	10/08/2015
UP TO 30 DAYS	0,516%	0,436%	0,426%	0,567%	0,486%	0,524%
30 TO 60 DAYS	0,636%	0,523%	0,695%	0,748%	0,230%	0,481%
60 TO 90 DAYS	0,318%	0,317%	0,298%	0,359%	0,341%	0,179%
90 TO 180 DAYS	0,101%	0,207%	0,210%	0,095%	0,450%	0,452%
OVER 180 DAYS	0,788%	0,723%	0,708%	0,714%	0,594%	0,696%



**FONDO DE TITULIZACIÓN DE ACTIVOS
HIPOTEBANSA 11**

LOAN TO VALUE

Report date: August 17th 2015

LTV				
	OUTS, BALANCE	% OUTSTANDING	NUMBER LOANS	% NUM LOANS
0-9,99	5.475.147,77 €	3,41%	678	16,12%
10-19,99	12.342.006,85 €	7,69%	627	14,91%
20-29,99	20.270.364,89 €	12,63%	559	13,29%
30-39,99	29.014.502,22 €	18,08%	709	16,86%
40-49,99	32.494.275,07 €	20,25%	670	15,93%
50-59,99	31.413.814,25 €	19,58%	524	12,46%
60-69,99	17.724.213,75 €	11,05%	264	6,28%
70-79,99	8.142.528,79 €	5,07%	124	2,95%
80-89,99	3.583.984,21 €	2,23%	51	1,21%

PREPAGOS - HIPOTEBANSA 11

17-ago-15

Fecha	Balance Teórico	Balance Real	0,78% Vector Prepago	Tasa Prepago Mensual desde Inicio	Tasa Prepago Anualizada desde Inicio	Tasa Prepago Mensual	Tasa Prepago Mensual Anualizada	Outstanding after prepayment	Principal Available
					9,06%				1.062.000.934,18
1	1.062.000.934,18		100,00%	100,00%				1.062.000.934,18	
2	1.059.170.325,97	1.057.044.700,19	99,22%	99,80%	0,20%	2,38%	0,20%	2,38%	1.057.044.700,2
3	1.056.330.372,16	1.048.809.339,04	98,45%	99,29%	0,36%	4,20%	0,51%	5,98%	1.048.809.339,0
4	1.053.479.859,47	1.037.938.978,94	97,69%	98,52%	0,49%	5,77%	0,77%	8,84%	1.037.938.978,9
5	1.050.618.748,66	1.030.003.541,32	96,93%	98,04%	0,49%	5,77%	0,49%	5,77%	1.030.003.541,3
6	1.047.747.000,34	1.020.972.745,34	96,18%	97,44%	0,52%	6,02%	0,61%	7,02%	1.020.972.745,3
7	1.044.864.574,97	1.010.816.263,76	95,43%	96,74%	0,55%	6,41%	0,72%	8,32%	1.010.816.263,8
8	1.041.971.432,87	1.003.440.878,07	94,69%	96,30%	0,54%	6,26%	0,45%	5,31%	1.003.440.878,1
9	1.039.067.682,10	993.186.004,40	93,96%	95,58%	0,56%	6,55%	0,75%	8,59%	993.186.004,4
10	1.036.153.135,33	982.097.638,62	93,23%	94,78%	0,59%	6,89%	0,84%	9,61%	982.097.638,6
11	1.033.227.752,45	975.159.555,45	92,51%	94,38%	0,58%	6,71%	0,43%	4,99%	975.159.555,5
12	1.030.291.493,18	966.431.750,97	91,79%	93,80%	0,58%	6,74%	0,61%	7,11%	966.431.751,0
13	1.027.344.317,10	953.436.130,22	91,07%	92,81%	0,62%	7,19%	1,06%	12,02%	953.436.130,2
14	1.024.386.183,63	944.508.540,63	90,37%	92,20%	0,62%	7,22%	0,65%	7,53%	944.508.540,6
15	1.021.417.800,39	930.185.073,01	89,67%	91,07%	0,67%	7,71%	1,23%	13,80%	930.185.073,0
16	1.018.438.380,94	921.831.922,03	88,97%	90,51%	0,66%	7,66%	0,61%	7,06%	921.831.922,0
17	1.015.447.884,27	907.539.469,11	88,28%	89,37%	0,70%	8,08%	1,26%	14,12%	907.539.469,1
18	1.012.446.269,20	895.504.918,67	87,60%	88,45%	0,72%	8,30%	1,03%	11,72%	895.504.918,7
19	1.009.433.494,41	887.418.518,82	86,92%	87,91%	0,71%	8,23%	0,61%	7,05%	887.418.518,8
20	1.006.409.518,43	876.263.237,75	86,24%	87,07%	0,73%	8,37%	0,96%	10,93%	876.263.237,8
21	1.003.377.044,29	867.495.065,22	85,57%	86,46%	0,72%	8,36%	0,70%	8,10%	867.495.065,2
22	1.000.333.295,73	857.633.882,55	84,91%	85,73%	0,73%	8,42%	0,84%	9,58%	857.633.882,6
23	997.278.230,87	804.308.410,78	84,25%	80,65%	0,97%	11,07%	5,93%	51,98%	804.308.410,8
24	994.211.807,63	795.545.591,13	83,60%	80,02%	0,96%	10,98%	0,78%	9,02%	795.545.591,1
25	991.133.983,79	782.598.464,39	82,95%	78,96%	0,98%	11,14%	1,32%	14,76%	782.598.464,4
26	988.044.717,00	770.977.781,30	82,30%	78,03%	0,99%	11,23%	1,18%	13,24%	770.977.781,3
27	984.948.536,41	754.651.271,17	81,66%	76,62%	1,02%	11,57%	1,81%	19,68%	754.651.271,2
28	981.840.844,62	742.323.934,82	81,03%	75,61%	1,03%	11,69%	1,32%	14,76%	742.323.934,8
29	978.721.598,87	731.960.780,33	80,40%	74,79%	1,03%	11,71%	1,08%	12,24%	731.960.780,3
30	975.590.756,20	718.984.542,85	79,78%	73,70%	1,05%	11,86%	1,46%	16,15%	718.984.542,9
31	972.448.273,51	706.885.021,02	79,16%	72,69%	1,06%	11,98%	1,37%	15,21%	706.885.021,0
32	969.294.107,55	689.240.977,47	78,54%	71,11%	1,09%	12,37%	2,18%	23,23%	689.240.977,5
33	966.131.551,58	678.185.756,46	77,93%	70,20%	1,10%	12,43%	1,28%	14,34%	678.185.756,5
34	962.957.237,72	666.214.919,67	77,33%	69,18%	1,11%	12,54%	1,44%	15,99%	666.214.919,7
35	959.771.122,28	658.165.638,87	76,73%	68,58%	1,10%	12,47%	0,88%	10,07%	658.165.638,9
36	956.573.161,40	648.651.369,26	76,13%	67,81%	1,10%	12,47%	1,12%	12,60%	648.651.369,3
37	953.363.311,04	638.242.081,65	75,54%	66,95%	1,11%	12,52%	1,27%	14,26%	638.242.081,7
38	950.141.527,02	627.954.600,79	74,96%	66,09%	1,11%	12,57%	1,28%	14,31%	627.954.600,8
39	946.909.556,71	616.446.413,36	74,38%	65,10%	1,12%	12,68%	1,50%	16,56%	616.446.413,4
40	943.665.570,52	605.695.422,90	73,80%	64,19%	1,13%	12,75%	1,41%	15,63%	605.695.422,9
41	940.409.523,79	594.529.487,85	73,23%	63,22%	1,14%	12,85%	1,50%	16,62%	594.529.487,9
42	937.141.371,71	584.960.675,74	72,66%	62,42%	1,14%	12,88%	1,27%	14,18%	584.960.675,7
43	933.861.069,29	575.086.536,35	72,09%	61,58%	1,15%	12,94%	1,34%	14,97%	575.086.536,4
44	930.568.571,35	565.932.803,00	71,53%	60,82%	1,15%	12,96%	1,24%	13,94%	565.932.803,0
45	927.272.799,87	558.118.316,87	70,98%	60,19%	1,15%	12,93%	1,03%	11,69%	558.118.316,9
46	923.964.775,39	550.497.713,95	70,43%	59,58%	1,14%	12,90%	1,01%	11,49%	550.497.714,0
47	920.644.452,37	542.920.794,56	69,88%	58,97%	1,14%	12,87%	1,02%	11,58%	542.920.794,6
48	917.311.785,10	536.549.647,93	69,34%	58,49%	1,13%	12,80%	0,81%	9,35%	536.549.647,9
49	913.966.727,70	529.463.736,52	68,80%	57,93%	1,13%	12,76%	0,96%	10,93%	529.463.736,5
50	910.609.234,12	520.643.753,84	68,27%	57,18%	1,13%	12,80%	1,30%	14,57%	520.643.753,8
51	907.242.586,08	512.492.911,52	67,74%	56,49%	1,14%	12,81%	1,20%	13,49%	512.492.911,5
52	903.863.421,61	505.142.636,37	67,21%	55,89%	1,13%	12,79%	1,07%	12,07%	505.142.636,4
53	900.471.694,20	498.780.135,48	66,69%	55,39%	1,13%	12,74%	0,89%	10,15%	498.780.135,5
54	897.067.357,15	490.788.190,07	66,17%	54,71%	1,13%	12,76%	1,23%	13,79%	490.788.190,1
55	893.650.363,60	485.583.354,72	65,66%	54,34%	1,12%	12,68%	0,68%	7,89%	485.583.354,7
56	890.220.666,50	479.137.057,63	65,15%	53,82%	1,12%	12,64%	0,95%	10,79%	479.137.057,6
57	886.836.366,45	471.982.288,71	64,64%	53,22%	1,12%	12,64%	1,12%	12,61%	471.982.288,7
58	883.439.484,37	465.857.195,81	64,14%	52,73%	1,12%	12,64%	0,92%	10,48%	465.857.195,8
59	880.029.973,50	461.998.838,58	63,64%	52,50%	1,10%	12,48%	0,44%	5,20%	461.998.838,6
60	876.607.786,89	458.046.611,10	63,15%	52,25%	1,09%	12,37%	0,47%	5,48%	458.046.611,1
61	873.172.877,43	452.371.234,64	62,66%	51,81%	1,09%	12,32%	0,85%	9,74%	452.371.234,6
62	869.725.197,85	448.356.935,35	62,17%	51,55%	1,08%	12,22%	0,49%	5,78%	448.356.935,4
63	866.268.177,14	439.408.095,80	61,69%	50,72%	1,09%	12,31%	1,60%	17,65%	439.408.095,8
64	862.798.304,13	432.865.132,35	61,21%	50,17%	1,09%	12,31%	1,09%	12,35%	432.865.132,4
65	859.315.531,03	428.713.233,91	60,74%	49,89%	1,08%	12,22%	0,56%	6,49%	428.713.233,9
66	855.819.809,91	423.809.725,84	60,27%	49,52%	1,08%	12,17%	0,74%	8,53%	423.809.725,8
67	852.311.092,64	417.767.295,59	59,80%	49,02%	1,07%	12,16%	1,02%	11,58%	417.767.295,6
68	848.789.330,93	414.119.779,42	59,33%	48,79%	1,07%	12,06%	0,46%	5,40%	414.119.779,4
69	845.278.456,53	408.387.262,86	58,87%	48,31%	1,06%	12,05%	0,97%	11,09%	408.387.262,9
70	841.754.529,66	399.894.858,15	58,42%	47,51%	1,07%	12,14%	1,67%	18,29%	399.894.858,2
71	838.217.501,81	397.104.484,05	57,96%	47,37%	1,06%	12,02%	0,28%	3,29%	397.104.484,1
72	834.667.324,30	392.635.300,03	57,51%	47,04%	1,06%	11,97%	0,70%	8,14%	392.635.300,0
73	831.103.948,24	388.690.866,11	57,07%	46,77%	1,05%	11,90%	0,58%	6,74%	388.690.866,1
74	827.527.324,58	385.413.737,73	56,62%	46,57%	1,04%	11,80%	0,41%	4,86%	385.413.737,7
75	823.941.709,31	379.887.693,57	56,19%	46,11%	1,04%	11,80%	1,00%	11,41%	379.887.693,6
76	820.342.763,79	376.132.280,53	55,75%	45,85%	1,03%	11,73%	0,55%	6,45%	376.132.280,5
77	816.730.438,47	373.184.766,62	55,32%	45,69%	1,03%	11,63%	0,34%	4,06%	373.184.766,6
78	813.104.683,62	370.712.910,40	54,89%	45,59%	1,01%	11,52%	0,22%	2,60%	370.712.910,4
79	809.465.449,34	366.289.849,16	54,46%	45,25%	1,01%	11,48%	0,75%	8,63%	366.289.849,2
80	805.812.685,52	362.559.930,03	54,04%	44,99%	1,01%	11,42%	0,57%	6,63%	362.559.930,0
81	802.186.527,76	357.724.978,07	53,62%	44,59%	1,00%	11,41%	0,89%	10,15%	357.724.978,1
82	798.546.889,06	353.824.448,77	53,20%	44,31%	1,00%	11,36%	0,64%	7,41%	353.824.448,8
83	794.893.719,32	350.570.091,65	52,79%	44,10%	0,99%	11,29%	0,46%	5,43%	350.570.091,7
84	791.226.968,25	347.229.237,07	52,38%	43,88%	0,99%	11,23%	0,49%	5,77%	347.229.237,1
85	787.546.585,37	340.966.922,50	51,97%	43,29%	0,99%	11,27%	1,34%	14,99%	340.966.922,5
86	783.852.520,02	337.271.256,12	51,57%	43,03%	0,99%	11,22%	0,62%	7,17%	337.271.256,1

87	1-ene-10	780.152.853,81	331.682.915,73	51,17%	42,52%	0,99%	11,25%	1,19%	13,39%	331.682.915,7	
88	1-feb-10	776.439.433,47	328.381.940,19	50,77%	42,29%	0,98%	11,19%	0,52%	6,08%	328.381.940,2	12.584.982,31
89	1-mar-10	772.712.207,86	324.299.710,78	50,38%	41,97%	0,98%	11,17%	0,77%	8,82%	324.299.710,8	
90	1-abr-10	768.971.125,68	320.856.666,58	49,99%	41,73%	0,98%	11,12%	0,58%	6,75%	320.856.666,6	
91	1-may-10	765.216.135,42	317.821.724,68	49,60%	41,53%	0,97%	11,06%	0,46%	5,38%	317.821.724,7	10.560.215,51
92	1-jun-10	761.447.185,41	315.309.819,68	49,22%	41,41%	0,96%	10,98%	0,30%	3,53%	315.309.819,7	
93	1-jul-10	757.737.575,21	312.506.764,97	48,83%	41,24%	0,96%	10,91%	0,40%	4,74%	312.506.765,0	
94	1-ago-10	754.014.173,91	307.861.260,43	48,45%	40,83%	0,96%	10,92%	1,00%	11,36%	307.861.260,4	9.960.464,25
95	1-sep-10	750.276.930,25	305.310.872,01	48,08%	40,69%	0,95%	10,84%	0,33%	3,94%	305.310.872,0	
96	1-oct-10	746.525.792,79	302.266.230,38	47,71%	40,49%	0,95%	10,79%	0,50%	5,83%	302.266.230,4	
97	1-nov-10	742.760.709,88	299.713.677,26	47,34%	40,35%	0,94%	10,72%	0,34%	4,03%	299.713.677,3	8.147.583,17
98	1-dic-10	738.981.629,70	296.591.158,42	46,97%	40,14%	0,94%	10,68%	0,54%	6,24%	296.591.158,4	
99	1-ene-11	735.193.927,19	291.262.819,72	46,60%	39,82%	0,94%	10,72%	1,29%	14,43%	291.262.819,7	
100	1-feb-11	731.392.143,34	288.900.230,44	46,24%	39,50%	0,93%	10,65%	0,30%	3,49%	288.900.230,4	10.813.446,82
101	1-mar-11	727.576.225,80	286.264.570,10	45,88%	39,34%	0,93%	10,59%	0,39%	4,61%	286.264.570,1	
102	1-abr-11	723.746.122,06	283.436.064,18	45,53%	39,16%	0,92%	10,54%	0,46%	5,43%	283.436.064,2	
103	1-may-11	719.901.779,38	280.960.059,59	45,17%	39,03%	0,92%	10,48%	0,34%	4,05%	280.960.059,6	7.940.170,85
104	1-jun-11	716.043.144,85	278.312.314,21	44,82%	38,87%	0,91%	10,43%	0,41%	4,79%	278.312.314,2	
105	1-jul-11	712.190.655,82	275.761.660,14	44,48%	38,72%	0,91%	10,37%	0,38%	4,47%	275.761.660,1	
106	1-ago-11	708.323.844,65	273.279.092,90	44,13%	38,58%	0,90%	10,31%	0,36%	4,23%	273.279.092,9	7.680.966,69
107	1-sep-11	704.442.658,13	270.935.369,97	43,79%	38,46%	0,90%	10,25%	0,31%	3,67%	270.935.370,0	
108	1-oct-11	700.547.042,80	268.556.921,92	43,45%	38,34%	0,89%	10,19%	0,33%	3,85%	268.556.921,9	
109	1-nov-11	696.636.945,06	266.425.568,69	43,11%	38,24%	0,89%	10,13%	0,24%	2,80%	266.425.568,7	6.853.524,21
110	1-dic-11	692.712.311,08	263.629.031,32	42,78%	38,06%	0,88%	10,09%	0,49%	5,71%	263.629.031,3	
111	1-ene-12	688.784.629,71	259.676.451,07	42,44%	37,70%	0,88%	10,10%	0,94%	10,69%	259.676.451,1	
112	1-feb-12	684.842.346,75	256.892.369,56	42,11%	37,51%	0,88%	10,06%	0,50%	5,87%	256.892.369,6	9.533.199,13
113	1-mar-12	680.885.407,92	253.949.065,00	41,79%	37,30%	0,88%	10,03%	0,57%	6,64%	253.949.065,0	
114	1-abr-12	676.913.758,75	251.104.281,26	41,46%	37,10%	0,87%	10,00%	0,54%	6,29%	251.104.281,3	
115	1-may-12	672.927.344,57	247.859.348,30	41,14%	36,83%	0,87%	9,98%	0,71%	8,17%	247.859.348,3	9.033.021,26
116	1-jun-12	668.926.110,50	244.993.940,46	40,82%	36,62%	0,87%	9,95%	0,56%	6,57%	244.993.940,5	
117	1-jul-12	665.347.651,79	242.336.402,87	40,51%	36,42%	0,87%	9,92%	0,55%	6,43%	242.336.402,9	
118	1-ago-12	661.755.889,43	239.852.008,79	40,19%	36,24%	0,86%	9,89%	0,49%	5,70%	239.852.008,8	8.007.339,51
119	1-sep-12	658.150.773,97	237.561.527,78	39,88%	36,10%	0,86%	9,84%	0,41%	4,84%	237.561.527,8	
120	1-oct-12	654.532.255,78	235.276.281,90	39,57%	35,95%	0,86%	9,80%	0,41%	4,86%	235.276.281,9	
121	1-nov-12	650.900.285,05	232.665.500,60	39,26%	35,75%	0,85%	9,78%	0,56%	6,49%	232.665.500,6	7.186.508,19
122	1-dic-12	647.254.811,77	229.563.429,83	38,96%	35,47%	0,85%	9,77%	0,78%	8,94%	229.563.429,8	
123	1-ene-13	643.606.678,16	226.412.789,50	38,66%	35,18%	0,85%	9,77%	0,81%	9,34%	226.412.789,5	
124	1-feb-13	639.944.981,93	224.148.004,03	38,36%	35,03%	0,85%	9,73%	0,43%	5,08%	224.148.004,0	8.517.496,57
125	1-mar-13	636.269.672,68	221.948.739,67	38,06%	34,88%	0,85%	9,69%	0,41%	4,80%	221.948.739,7	
126	1-abr-13	632.580.699,82	219.391.546,83	37,76%	34,68%	0,84%	9,67%	0,58%	6,69%	219.391.546,8	
127	1-may-13	628.878.012,55	217.174.140,11	37,47%	34,53%	0,84%	9,63%	0,43%	5,02%	217.174.140,1	6.973.863,92
128	1-jun-13	625.161.559,92	215.049.584,48	37,18%	34,40%	0,84%	9,59%	0,39%	4,58%	215.049.584,5	
129	1-jul-13	621.456.630,52	212.809.646,44	36,89%	34,24%	0,83%	9,56%	0,45%	5,29%	212.809.646,4	
130	1-ago-13	617.737.927,43	210.659.136,59	36,60%	34,10%	0,83%	9,52%	0,41%	4,86%	210.659.136,6	6.515.003,52
131	1-sep-13	614.005.399,43	208.912.559,65	36,32%	34,02%	0,83%	9,47%	0,23%	2,68%	208.912.559,7	
132	1-oct-13	610.258.995,15	206.556.591,52	36,04%	33,85%	0,82%	9,45%	0,52%	6,07%	206.556.591,5	
133	1-nov-13	606.498.663,03	204.578.485,37	35,76%	33,73%	0,82%	9,41%	0,34%	4,05%	204.578.485,4	6.080.651,22
134	1-dic-13	602.724.351,28	202.437.830,58	35,48%	33,59%	0,82%	9,37%	0,43%	5,00%	202.437.830,6	
135	1-ene-14	598.945.359,53	199.455.990,35	35,21%	33,30%	0,82%	9,38%	0,85%	9,75%	199.455.990,4	
136	1-feb-14	595.152.318,81	197.425.214,43	34,93%	33,17%	0,81%	9,34%	0,39%	4,55%	197.425.214,4	7.153.270,94
137	1-mar-14	591.345.176,91	194.082.513,37	34,66%	32,82%	0,82%	9,36%	1,06%	12,01%	194.082.513,4	
138	1-abr-14	587.523.881,41	191.766.394,14	34,39%	32,64%	0,81%	9,34%	0,55%	6,41%	191.766.394,1	
139	1-may-14	583.688.379,71	189.955.295,88	34,13%	32,54%	0,81%	9,30%	0,29%	3,47%	189.955.295,9	7.469.918,55
140	1-jun-14	579.838.619,01	187.970.954,96	33,86%	32,42%	0,81%	9,27%	0,39%	4,55%	187.970.955,0	
141	1-jul-14	576.249.599,09	184.376.022,73	33,60%	32,00%	0,81%	9,31%	1,30%	14,55%	184.376.022,7	
142	1-ago-14	572.647.236,25	183.915.580,70	33,34%	32,12%	0,80%	9,21%	-0,38%	-4,63%	183.915.580,7	6.039.715,18
143	1-sep-14	569.031.480,92	182.088.534,10	33,08%	32,00%	0,80%	9,18%	0,36%	4,29%	182.088.534,1	
144	1-oct-14	565.402.283,32	179.967.990,52	32,82%	31,83%	0,80%	9,16%	0,53%	6,18%	179.967.990,5	
145	1-nov-14	561.759.593,48	178.166.408,27	32,57%	31,72%	0,79%	9,13%	0,36%	4,23%	178.166.408,3	5.749.172,43
146	1-dic-14	558.103.361,25	176.557.932,40	32,31%	31,64%	0,79%	9,09%	0,25%	3,00%	176.557.932,4	
147	1-ene-15	554.443.005,38	173.697.923,48	32,06%	31,33%	0,79%	9,10%	0,97%	11,04%	173.697.923,5	
148	1-feb-15	550.769.041,47	171.789.178,86	31,81%	31,19%	0,79%	9,07%	0,44%	5,14%	171.789.178,9	6.377.229,41
149	1-mar-15	547.081.418,95	169.802.765,32	31,57%	31,04%	0,79%	9,05%	0,49%	5,72%	169.802.765,3	
150	1-abr-15	543.380.087,04	166.653.950,29	31,32%	30,67%	0,79%	9,08%	1,19%	13,34%	166.653.950,3	
151	1-may-15	539.664.994,80	165.935.890,49	31,08%	30,75%	0,78%	9,00%	-0,25%	-3,10%	165.935.890,5	5.853.288,37
152	1-jun-15	535.936.091,09	164.426.688,35	30,84%	30,68%	0,78%	8,96%	0,22%	2,61%	164.426.688,4	
153	1-jul-15	532.220.881,90	162.349.402,67	30,60%	30,50%	0,78%	8,95%	0,57%	6,68%	162.349.402,7	
154	1-ago-15	528.491.860,80	160.460.837,80	30,36%	30,36%	0,78%	8,93%	0,47%	5,45%	160.460.837,8	5.475.052,69

1.062.000.000,00
6,00%
0,75%
17-ago-15

69285,54

VIDA RESIDUAL DESDE

2,03

2,32

FECHA	Principal disponible para la amortización	SERIE A	SERIE B	SERIE A		SERIE B	
				PRINCIPAL	VIDA MEDIA	PRINCIPAL	VIDA MEDIA
15-dic-02	0,00	1.040.800.000,00	21.200.000,00	0,00	0,00	0,00	0,00
15-ene-03 1	0,00	1.040.800.000,00	21.200.000,00	0,00	0,00	0,00	0,00
15-feb-03 1	24.061.955,24	1.040.800.000,00	21.200.000,00	24.061.955,24	-109.866.887.625,84	0,00	0,00
15-mar-03 1	0,00	1.016.738.044,76	21.200.000,00	0,00	0,00	0,00	0,00
15-abr-03 1	0,00	1.016.738.044,76	21.200.000,00	0,00	0,00	0,00	0,00
15-may-03 1	27.122.715,18	1.016.738.044,76	21.200.000,00	27.122.715,18	-121.428.395.860,86	0,00	0,00
15-jun-03 1	0,00	989.615.329,58	21.200.000,00	0,00	0,00	0,00	0,00
15-jul-03 1	0,00	989.615.329,58	21.200.000,00	0,00	0,00	0,00	0,00
15-ago-03 1	28.718.625,14	989.615.329,58	21.200.000,00	28.718.625,14	-125.931.171.238,90	0,00	0,00
15-sep-03 1	0,00	960.896.704,44	21.200.000,00	0,00	0,00	0,00	0,00
15-oct-03 1	0,00	960.896.704,44	21.200.000,00	0,00	0,00	0,00	0,00
15-nov-03 1	28.661.508,40	960.896.704,44	21.200.000,00	28.661.508,40	-123.043.855.561,20	0,00	0,00
15-dic-03 1	0,00	932.235.196,04	21.200.000,00	0,00	0,00	0,00	0,00
15-ene-04 1	0,00	932.235.196,04	21.200.000,00	0,00	0,00	0,00	0,00
15-feb-04 1	31.604.208,19	932.235.196,04	21.200.000,00	31.604.208,19	-132.769.278.606,19	0,00	0,00
15-mar-04 1	0,00	900.630.987,85	21.200.000,00	0,00	0,00	0,00	0,00
15-abr-04 1	0,00	900.630.987,85	21.200.000,00	0,00	0,00	0,00	0,00
15-may-04 1	34.413.403,21	900.630.987,85	21.200.000,00	34.413.403,21	-141.473.500.596,31	0,00	0,00
15-jun-04 1	0,00	866.217.584,64	21.200.000,00	0,00	0,00	0,00	0,00
15-jul-04 1	0,00	866.217.584,64	21.200.000,00	0,00	0,00	0,00	0,00
15-ago-04 1	29.784.636,27	866.217.584,64	21.200.000,00	29.784.636,27	-119.704.453.169,13	0,00	0,00
15-sep-04 1	0,00	836.432.948,37	21.200.000,00	0,00	0,00	0,00	0,00
15-oct-04 1	0,00	836.432.948,37	21.200.000,00	0,00	0,00	0,00	0,00
15-nov-04 1	75.035.418,16	836.432.948,37	21.200.000,00	75.035.418,16	-294.664.087.114,32	0,00	0,00
15-dic-04 1	0,00	761.397.530,21	21.200.000,00	0,00	0,00	0,00	0,00
15-ene-05 1	0,00	761.397.530,21	21.200.000,00	0,00	0,00	0,00	0,00
15-feb-05 1	40.274.529,57	761.397.530,21	21.200.000,00	40.274.529,57	-154.452.820.900,95	0,00	0,00
15-mar-05 1	0,00	721.123.000,64	21.200.000,00	0,00	0,00	0,00	0,00
15-abr-05 1	0,00	721.123.000,64	21.200.000,00	0,00	0,00	0,00	0,00
15-may-05 1	35.438.913,80	721.123.000,64	21.200.000,00	35.438.913,80	-132.754.171.094,80	0,00	0,00
15-jun-05 1	0,00	685.684.086,84	21.200.000,00	0,00	0,00	0,00	0,00
15-jul-05 1	0,00	685.684.086,84	21.200.000,00	0,00	0,00	0,00	0,00
15-ago-05 1	40.670.101,35	685.684.086,84	21.200.000,00	40.670.101,35	-148.608.550.332,90	0,00	0,00
15-sep-05 1	0,00	645.013.985,49	21.200.000,00	0,00	0,00	0,00	0,00
15-oct-05 1	0,00	645.013.985,49	21.200.000,00	0,00	0,00	0,00	0,00
15-nov-05 1	27.972.838,02	645.013.985,49	21.200.000,00	27.972.838,02	-99.639.249.027,24	0,00	0,00
15-dic-05 1	0,00	617.041.147,47	21.200.000,00	0,00	0,00	0,00	0,00
15-ene-06 1	0,00	617.041.147,47	21.200.000,00	0,00	0,00	0,00	0,00
15-feb-06 1	32.546.658,75	617.041.147,47	21.200.000,00	32.546.658,75	-112.936.905.862,50	0,00	0,00
15-mar-06 1	0,00	584.494.488,72	21.200.000,00	0,00	0,00	0,00	0,00
15-abr-06 1	0,00	584.494.488,72	21.200.000,00	0,00	0,00	0,00	0,00
15-may-06 1	30.608.886,55	584.494.488,72	21.200.000,00	30.608.886,55	-103.488.645.425,55	0,00	0,00
15-jun-06 1	0,00	553.885.602,17	21.200.000,00	0,00	0,00	0,00	0,00
15-jul-06 1	0,00	553.885.602,17	21.200.000,00	0,00	0,00	0,00	0,00
15-ago-06 1	24.588.822,40	553.885.602,17	21.200.000,00	24.588.822,40	-80.872.636.873,60	0,00	0,00
15-sep-06 1	0,00	529.296.779,77	21.200.000,00	0,00	0,00	0,00	0,00
15-oct-06 1	0,00	529.296.779,77	21.200.000,00	0,00	0,00	0,00	0,00
15-nov-06 1	21.033.977,43	529.296.779,77	21.200.000,00	21.033.977,43	-67.245.625.843,71	0,00	0,00
15-dic-06 1	0,00	508.262.802,34	21.200.000,00	0,00	0,00	0,00	0,00
15-ene-07 1	0,00	508.262.802,34	21.200.000,00	0,00	0,00	0,00	0,00
15-feb-07 1	24.321.100,15	508.262.802,34	21.200.000,00	24.321.100,15	-75.517.015.965,75	0,00	0,00
15-mar-07 1	0,00	483.941.702,19	21.200.000,00	0,00	0,00	0,00	0,00
15-abr-07 1	0,00	483.941.702,19	21.200.000,00	0,00	0,00	0,00	0,00
15-may-07 1	19.559.281,65	483.941.702,19	21.200.000,00	19.559.281,65	-58.990.793.456,40	0,00	0,00
15-jun-07 1	0,00	464.382.420,54	21.200.000,00	0,00	0,00	0,00	0,00
15-jul-07 1	0,00	464.382.420,54	21.200.000,00	0,00	0,00	0,00	0,00
15-ago-07 1	19.726.158,91	464.382.420,54	21.200.000,00	19.726.158,91	-57.679.288.652,84	0,00	0,00
15-sep-07 1	0,00	444.656.261,63	21.200.000,00	0,00	0,00	0,00	0,00
15-oct-07 1	0,00	444.656.261,63	21.200.000,00	0,00	0,00	0,00	0,00
15-nov-07 1	13.485.961,17	444.656.261,63	21.200.000,00	13.485.961,17	-38.192.242.033,44	0,00	0,00
15-dic-07 1	0,00	431.170.300,46	21.200.000,00	0,00	0,00	0,00	0,00
15-ene-08 1	0,00	431.170.300,46	21.200.000,00	0,00	0,00	0,00	0,00
15-feb-08 1	19.506.102,29	431.170.300,46	21.200.000,00	19.506.102,29	-53.446.720.274,60	0,00	0,00
15-mar-08 1	0,00	411.664.198,17	21.200.000,00	0,00	0,00	0,00	0,00
15-abr-08 1	0,00	411.664.198,17	21.200.000,00	0,00	0,00	0,00	0,00
15-may-08 1	15.097.836,76	411.664.198,17	21.200.000,00	15.097.836,76	-40.009.267.414,00	0,00	0,00
15-jun-08 1	0,00	396.566.361,41	21.200.000,00	0,00	0,00	0,00	0,00
15-jul-08 1	0,00	396.566.361,41	21.200.000,00	0,00	0,00	0,00	0,00
15-ago-08 1	17.872.437,44	396.566.361,41	21.200.000,00	17.872.437,44	-45.717.694.971,52	0,00	0,00
15-sep-08 1	0,00	378.693.923,97	21.200.000,00	0,00	0,00	0,00	0,00
15-oct-08 1	0,00	378.693.923,97	21.200.000,00	0,00	0,00	0,00	0,00
15-nov-08 1	11.203.992,04	378.693.923,97	21.200.000,00	11.203.992,04	-27.629.044.370,64	0,00	0,00
15-dic-08 1	0,00	367.489.931,93	21.200.000,00	0,00	0,00	0,00	0,00
15-ene-09 1	0,00	367.489.931,93	21.200.000,00	0,00	0,00	0,00	0,00
15-feb-09 1	12.558.585,58	367.489.931,93	21.200.000,00	12.558.585,58	-29.814.082.166,92	0,00	0,00
15-mar-09 1	0,00	354.931.346,35	21.200.000,00	0,00	0,00	0,00	0,00
15-abr-09 1	0,00	354.931.346,35	21.200.000,00	0,00	0,00	0,00	0,00
15-may-09 1	9.842.431,37	354.931.346,35	21.200.000,00	9.375.766,18	-21.423.625.721,73	466.665,19	-1.066.329.958,72
15-jun-09 1	0,00	345.555.580,17	20.733.334,81	0,00	0,00	0,00	0,00
15-jul-09 1	0,00	345.555.580,17	20.733.334,81	0,00	0,00	0,00	0,00
15-ago-09 1	12.465.400,39	345.555.580,17	20.733.334,81	11.759.811,69	-25.789.267.033,27	705.588,70	-1.547.356.022,00

1.062.000.000,000
 6,00%
 0,75%
 17-ago-15

69285,54

VIDA RESIDUAL DESDE

2,03

2,32

	Principal	SERIE A		SERIE B		SERIE A		SERIE B	
		PRINCIPAL	VIDA	PRINCIPAL	VIDA	PRINCIPAL	VIDA	PRINCIPAL	VIDA
15-sep-09	1	0,00	333.795.768,48	20.027.746,11	0,00	0,00	0,00	0,00	0,00
15-oct-09	1	0,00	333.795.768,48	20.027.746,11	0,00	0,00	0,00	0,00	0,00
15-nov-09	1	12.857.526,27	333.795.768,48	20.027.746,11	12.129.741,76	-25.484.587.446,48	727.784,51	-1.529.075.246,79	
15-dic-09	1	0,00	321.666.026,72	19.299.961,60	0,00	0,00	0,00	0,00	0,00
15-ene-10	1	0,00	321.666.026,72	19.299.961,60	0,00	0,00	0,00	0,00	0,00
15-feb-10	1	12.584.982,31	321.666.026,72	19.299.961,60	11.872.624,82	-23.852.103.264,90	712.357,49	-1.431.126.195,89	
15-mar-10	1	0,00	309.793.401,90	18.587.604,11	0,00	0,00	0,00	0,00	0,00
15-abr-10	1	0,00	309.793.401,90	18.587.604,11	0,00	0,00	0,00	0,00	0,00
15-may-10	1	10.560.215,51	309.793.401,90	18.587.604,11	9.962.467,46	-19.127.937.527,55	597.748,05	-1.147.676.251,65	
15-jun-10	1	0,00	299.830.934,43	17.989.856,07	0,00	0,00	0,00	0,00	0,00
15-jul-10	1	0,00	299.830.934,43	17.989.856,07	0,00	0,00	0,00	0,00	0,00
15-ago-10	1	9.960.464,25	299.830.934,43	17.989.856,07	9.396.664,39	-17.177.102.499,06	563.799,86	-1.030.626.149,94	
15-sep-10	1	0,00	290.434.270,05	17.426.056,20	0,00	0,00	0,00	0,00	0,00
15-oct-10	1	0,00	290.434.270,05	17.426.056,20	0,00	0,00	0,00	0,00	0,00
15-nov-10	1	8.147.583,17	290.434.270,05	17.426.056,20	7.686.399,22	-13.343.589.040,68	461.183,95	-800.615.342,44	
15-dic-10	1	0,00	282.747.870,83	16.964.872,25	0,00	0,00	0,00	0,00	0,00
15-ene-11	1	0,00	282.747.870,83	16.964.872,25	0,00	0,00	0,00	0,00	0,00
15-feb-11	1	10.813.446,82	282.747.870,83	16.964.872,25	10.201.364,92	-16.771.043.935,92	612.081,90	-1.006.262.636,16	
15-mar-11	1	0,00	272.546.505,91	16.352.790,35	0,00	0,00	0,00	0,00	0,00
15-abr-11	1	0,00	272.546.505,91	16.352.790,35	0,00	0,00	0,00	0,00	0,00
15-may-11	1	7.940.170,85	272.546.505,91	16.352.790,35	7.490.727,22	-11.648.080.822,41	449.443,63	-698.884.849,34	
15-jun-11	1	0,00	265.055.778,69	15.903.346,72	0,00	0,00	0,00	0,00	0,00
15-jul-11	1	0,00	265.055.778,69	15.903.346,72	0,00	0,00	0,00	0,00	0,00
15-ago-11	1	7.680.966,69	265.055.778,69	15.903.346,72	7.246.194,99	-10.601.183.271,20	434.771,70	-636.070.996,27	
15-sep-11	1	0,00	257.809.583,70	15.468.575,02	0,00	0,00	0,00	0,00	0,00
15-oct-11	1	0,00	257.809.583,70	15.468.575,02	0,00	0,00	0,00	0,00	0,00
15-nov-11	1	6.853.524,21	257.809.583,70	15.468.575,02	6.465.588,88	-8.864.322.350,86	387.935,33	-531.859.341,05	
15-dic-11	1	0,00	251.343.994,82	15.080.639,69	0,00	0,00	0,00	0,00	0,00
15-ene-12	1	0,00	251.343.994,82	15.080.639,69	0,00	0,00	0,00	0,00	0,00
15-feb-12	1	9.533.199,13	251.343.994,82	15.080.639,69	8.993.584,08	-11.502.794.044,59	539.615,05	-690.167.642,68	
15-mar-12	1	0,00	242.350.410,74	14.541.024,64	0,00	0,00	0,00	0,00	0,00
15-abr-12	1	0,00	242.350.410,74	14.541.024,64	0,00	0,00	0,00	0,00	0,00
15-may-12	1	9.033.021,26	242.350.410,74	14.541.024,64	8.521.718,17	-10.132.322.903,91	511.303,09	-607.939.374,23	
15-jun-12	1	0,00	233.828.692,57	14.029.721,55	0,00	0,00	0,00	0,00	0,00
15-jul-12	1	0,00	233.828.692,57	14.029.721,55	0,00	0,00	0,00	0,00	0,00
15-ago-12	1	8.007.339,51	233.828.692,57	14.029.721,55	7.554.093,88	-8.286.840.983,46	453.245,63	-497.210.459,01	
15-sep-12	1	0,00	226.274.598,69	13.576.475,92	0,00	0,00	0,00	0,00	0,00
15-oct-12	1	0,00	226.274.598,69	13.576.475,92	0,00	0,00	0,00	0,00	0,00
15-nov-12	1	7.186.508,19	226.274.598,69	13.576.475,92	6.779.724,71	-6.813.623.331,08	406.783,48	-408.817.399,87	
15-dic-12	1	0,00	219.494.873,98	13.169.692,44	0,00	0,00	0,00	0,00	0,00
15-ene-13	1	0,00	219.494.873,98	13.169.692,44	0,00	0,00	0,00	0,00	0,00
15-feb-13	1	8.517.496,57	219.494.873,98	13.169.692,44	8.035.374,12	-7.336.296.573,97	482.122,45	-440.177.794,44	
15-mar-13	1	0,00	211.459.499,86	12.687.569,99	0,00	0,00	0,00	0,00	0,00
15-abr-13	1	0,00	211.459.499,86	12.687.569,99	0,00	0,00	0,00	0,00	0,00
15-may-13	1	6.973.863,92	211.459.499,86	12.687.569,99	6.579.116,91	-5.421.192.330,26	394.747,01	-325.271.539,82	
15-jun-13	1	0,00	204.880.382,95	12.292.822,98	0,00	0,00	0,00	0,00	0,00
15-jul-13	1	0,00	204.880.382,95	12.292.822,98	0,00	0,00	0,00	0,00	0,00
15-ago-13	1	6.515.003,52	204.880.382,95	12.292.822,98	6.515.003,52	-4.768.982.576,64	0,00	0,00	0,00
15-sep-13	1	0,00	198.365.379,43	12.292.822,98	0,00	0,00	0,00	0,00	0,00
15-oct-13	1	0,00	198.365.379,43	12.292.822,98	0,00	0,00	0,00	0,00	0,00
15-nov-13	1	6.080.651,22	198.365.379,43	12.292.822,98	5.367.689,63	-3.435.321.363,80	712.961,59	-456.295.417,00	
15-dic-13	1	0,00	192.997.689,80	11.579.861,39	0,00	0,00	0,00	0,00	0,00
15-ene-14	1	0,00	192.997.689,80	11.579.861,39	0,00	0,00	0,00	0,00	0,00
15-feb-14	1	7.153.270,94	192.997.689,80	11.579.861,39	6.748.368,81	-3.698.106.108,60	404.902,13	-221.886.366,52	
15-mar-14	1	0,00	186.249.320,99	11.174.959,26	0,00	0,00	0,00	0,00	0,00
15-abr-14	1	0,00	186.249.320,99	11.174.959,26	0,00	0,00	0,00	0,00	0,00
15-may-14	1	7.469.918,55	186.249.320,99	11.174.959,26	7.047.092,97	-3.234.615.674,01	422.825,58	-194.076.940,44	
15-jun-14	1	0,00	179.202.228,02	10.752.133,68	0,00	0,00	0,00	0,00	0,00
15-jul-14	1	0,00	179.202.228,02	10.752.133,68	0,00	0,00	0,00	0,00	0,00
15-ago-14	1	6.039.715,18	179.202.228,02	10.752.133,68	5.697.844,51	-2.091.108.934,96	341.870,67	-125.466.536,10	
15-sep-14	1	0,00	173.504.383,51	10.410.263,01	0,00	0,00	0,00	0,00	0,00
15-oct-14	1	0,00	173.504.383,51	10.410.263,01	0,00	0,00	0,00	0,00	0,00
15-nov-14	1	5.749.172,43	173.504.383,51	10.410.263,01	5.423.747,58	-1.491.530.583,25	325.424,85	-89.491.835,00	
15-dic-14	1	0,00	168.080.635,93	10.084.838,16	0,00	0,00	0,00	0,00	0,00
15-ene-15	1	0,00	168.080.635,93	10.084.838,16	0,00	0,00	0,00	0,00	0,00
15-feb-15	1	6.377.229,41	168.080.635,93	10.084.838,16	6.016.254,16	-1.100.974.511,35	360.975,25	-66.058.470,68	
15-mar-15	1	0,00	162.064.381,77	9.723.862,91	0,00	0,00	0,00	0,00	0,00
15-abr-15	1	0,00	162.064.381,77	9.723.862,91	0,00	0,00	0,00	0,00	0,00
15-may-15	1	5.853.288,37	162.064.381,77	9.723.862,91	5.521.970,16	-519.065.195,08	331.318,21	-31.143.911,70	
15-jun-15	1	0,00	156.542.411,61	9.392.544,70	0,00	0,00	0,00	0,00	0,00
15-jul-15	1	0,00	156.542.411,61	9.392.544,70	0,00	0,00	0,00	0,00	0,00
15-ago-15	1	5.475.052,69	156.542.411,61	9.392.544,70	5.165.144,05	-10.330.288,09	309.908,64	-619.817,29	
15-sep-15	1	0,00	151.377.267,57	9.082.636,05	0,00	0,00	0,00	0,00	0,00
15-oct-15	1	0,00	151.377.267,57	9.082.636,05	0,00	0,00	0,00	0,00	0,00
15-nov-15	1	7.049.707,36	151.377.267,57	9.082.636,05	6.650.667,32	598.560.058,50	399.040,04	35.913.603,51	
15-dic-15	1	0,00	144.726.600,25	8.683.596,01	0,00	0,00	0,00	0,00	0,00
15-ene-16	1	0,00	144.726.600,25	8.683.596,01	0,00	0,00	0,00	0,00	0,00
15-feb-16	1	6.841.100,43	144.726.600,25	8.683.596,01	6.453.868,33	1.174.604.035,81	387.232,10	70.476.242,15	
15-mar-16	1	0,00	138.272.731,92	8.296.363,92	0,00	0,00	0,00	0,00	0,00
15-abr-16	1	0,00	138.272.731,92	8.296.363,92	0,00	0,00	0,00	0,00	0,00
15-may-16	1	6.640.455,89	138.272.731,92	8.296.363,92	6.640.455,89	1.806.204.002,98	0,00	0,00	0,00
15-jun-16	1	0,00	131.632.276,03	8.296.363,92	0,00	0,00	0,00	0,00	0,00
15-jul-16	1	0,00	131.632.276,03	8.296.363,92	0,00	0,00	0,00	0,00	0,00
15-ago-16	1	6.433.841,12	131.632.276,03	8.296.363,92	6.433.841,12	2.341.918.167,15	0,00	0,00	0,00
15-sep-16	1	0,00	125.198.434,91	8.296.363,92	0,00	0,00	0,00	0,00	0,00

1.062.000.000,000
 6,00%
 0,75%
 17-ago-15

69285,54

VIDA RESIDUAL DESDE

2,03

2,32

	Principal	SERIE A	SERIE B	SERIE A PRINCIPAL	VIDA	SERIE B PRINCIPAL	VIDA	
15-oct-16 1	0,00	125.198.434,91	8.296.363,92	0,00	0,00	0,00	0,00	0,00
15-nov-16 1	6.239.577,23	125.198.434,91	8.296.363,92	6.239.577,23	2.845.247.215,54	0,00	0,00	0,00
15-dic-16 1	0,00	118.958.857,68	8.296.363,92	0,00	0,00	0,00	0,00	0,00
15-ene-17 1	0,00	118.958.857,68	8.296.363,92	0,00	0,00	0,00	0,00	0,00
15-feb-17 1	6.050.995,40	118.958.857,68	8.296.363,92	6.050.995,40	3.315.945.480,56	0,00	0,00	0,00
15-mar-17 1	0,00	112.907.862,28	8.296.363,92	0,00	0,00	0,00	0,00	0,00
15-abr-17 1	0,00	112.907.862,28	8.296.363,92	0,00	0,00	0,00	0,00	0,00
15-may-17 1	5.870.389,42	112.907.862,28	8.296.363,92	5.870.389,42	3.739.438.059,69	0,00	0,00	0,00
15-jun-17 1	0,00	107.037.472,86	8.296.363,92	0,00	0,00	0,00	0,00	0,00
15-jul-17 1	0,00	107.037.472,86	8.296.363,92	0,00	0,00	0,00	0,00	0,00
15-ago-17 1	5.213.313,65	107.037.472,86	8.296.363,92	5.213.313,65	3.800.505.650,54	0,00	0,00	0,00
15-sep-17 1	0,00	101.824.159,21	8.296.363,92	0,00	0,00	0,00	0,00	0,00
15-oct-17 1	0,00	101.824.159,21	8.296.363,92	0,00	0,00	0,00	0,00	0,00
15-nov-17 1	4.824.090,00	101.824.159,21	8.296.363,92	4.824.090,00	3.960.577.891,78	0,00	0,00	0,00
15-dic-17 1	0,00	97.000.069,21	8.296.363,92	0	0,00	0,00	0,00	0,00
15-ene-18 1	0,00	97.000.069,21	8.296.363,92	0	0,00	0,00	0,00	0,00
15-feb-18 1	105.297.367,30	97.000.069,21	8.296.363,92	97000069,2089	88.561.063.187,75	8.296.363,92	7.574.580.254,62	