



FONDO DE TITULIZACIÓN HIPOTECARIA
UCI 7

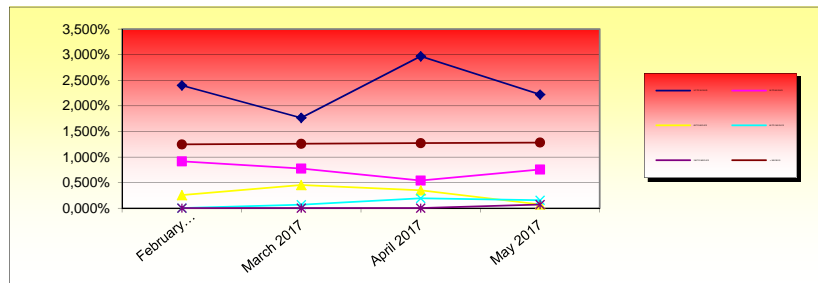
31st, May 2017

	ARREARS FROM CURRENT MONTH					
	Up to 30 days	From 30 to 60 days	From 60 to 90 days	From 90 to 180 days	From 180 to 365 days	More than 365 days
Principal	5.826,69	2.999,03	932,19	1.636,75	1.045,48	46.919,93
Interest	657,03	678,98	87,57	222,92	151,82	23.616,25
Credit Rights	797.487,99	271.262,95	26.501,06	55.798,26	25.066,48	460.157,58
number of Credit Rights	26	8	2	1	1	10
% Credit Rights	2,22%	0,76%	0,07%	0,16%	0,07%	1,28%

DATE	ARREARS FROM LAST 12 MONTHS							
	NUM. CR'S	BALANCE CR'S	UNPAID DC'S	PRINCIPAL UNPAID	INTEREST UNPAID	TOTAL UNPAID	BALANCE CR'S UNPAID	% UNPAID
2016/06/30	1.592	40.544.376,53	40	58.915,11	26.089,36	85.004,47	1.475.684,97	3,64%
2016/07/31	1.579	40.146.471,08	49	60.976,91	26.555,39	87.532,30	1.869.114,15	4,66%
2016/08/31	1.565	39.694.533,37	43	56.507,02	25.926,57	82.433,59	1.608.488,88	4,05%
2016/09/30	1.557	39.285.830,41	50	58.114,25	26.349,83	84.464,08	1.813.259,75	4,62%
2016/10/31	1.544	38.773.639,67	44	57.503,95	26.198,94	83.702,89	1.645.534,16	4,24%
2016/11/30	1.530	38.314.297,40	42	57.380,92	26.442,56	83.823,48	1.650.206,41	4,31%
2016/12/31	1.516	37.909.491,03	51	59.627,00	26.795,70	86.422,70	1.855.685,78	4,90%
2017/01/31	1.508	37.506.638,96	62	62.104,56	27.099,08	89.203,64	2.244.204,38	5,98%
2017/02/28	1.502	37.087.973,58	51	59.120,91	26.586,74	85.707,65	1.784.643,80	4,81%
2017/03/31	1.495	36.672.652,72	42	57.705,62	26.313,52	84.019,14	1.583.375,12	4,32%
2017/04/30	1.489	36.273.108,06	54	60.347,21	25.807,39	86.154,60	1.928.249,03	5,32%
2017/05/31	1.487	35.904.011,48	48	59.360,07	25.414,57	84.774,64	1.636.274,32	4,56%

	ARREARS FROM L.T.V.					
	Up to 30 days	From 30 to 60 days	From 60 to 90 days	From 90 to 180 days	From 180 to 365 days	More than 365 days
Principal	5.826,69	2.999,03	932,19	1.636,75	1.045,48	46.919,93
Interest	657,03	678,98	87,57	222,92	151,82	23.616,25
Credit Rights	797.487,99	271.262,95	26.501,06	55.798,26	25.066,48	460.157,58
number of Credit Rights	26	8	2	1	1	10
% Credit Rights	2,22%	0,76%	0,07%	0,16%	0,07%	1,28%
L.T.V.	33,00%	36,00%	34,00%	28,00%	32,00%	44,00%

ARREARS PERFORMANCE				
	February 2017	March 2017	April 2017	May 2017
UP TO 30 DAYS	2,399%	1,766%	2,968%	2,221%
30 TO 60 DAYS	0,914%	0,772%	0,538%	0,756%
60 TO 90 DAYS	0,253%	0,452%	0,348%	0,074%
90 TO 180 DAYS	0,000%	0,068%	0,192%	0,155%
180 TO 365 DAYS	0,000%	0,000%	0,000%	0,070%
> 365 DAYS	1,246%	1,259%	1,270%	1,282%



TRANSITORY PROPERTIES	
Cumulative Transitory Properties	-

POOL'S LOSSES	
Current amount	364.52 €