



FONDO DE TITULIZACIÓN HIPOTECARIA BANESTO 1

**Desirée Pérez Montoro
Analyst
Santander de Titulización
Ciudad Grupo Santander
Ed. Encinar 28660 Boadilla del Monte
desperez@gruposantander.com
Tel: +34 91 289 32 78**



FONDO DE TITULIZACIÓN HIPOTECARIA

BANESTO 1

DATA OF THE FUND

Constitution Date	July 29th, 1999	Paying Agent	Banesto	
Disbursement Date	August 3th, 1999	Negotiation Market	AIAF	
Final Date of Redemption	February 18th, 2029	Ratings Agencies	Moody's	
Gestora	Santander de Titulización	Classification	Initial	Current
Seller MP's	Banesto	Class A	Aaa	Aaa
		Class B	A2	A2

SECURITIES ISSUED CHARGED TO THE FUND: SECURITISATION BONDS

CLASS PRIORITY	NUM BONDS	W.A.L	NOMINAL			
			ISIN CODE	INITIAL	ACTUAL	%Act/In
Class A (ISIN=ES0341221002)	7.324	0,05	Nominal per Bond	100.000,00 €	8.860,91 €	
			Total Nominal	732.400.000,00 €	64.897.304,84 €	8,86%
Class B (ISIN=ES0341221010)	266	0,05	Nominal per Bond	100.000,00 €	28.533,83 €	
			Total Nominal	26.600.000,00 €	7.589.998,78 €	28,53%

REDEMPTION AND INTEREST OF THE BONDS					
Current			Next		
Payment Date of the Actual Period August 18th, 2009			Next Payment Date November 18th, 2009		
	Redemption of the Bonds	Gross Interest	Interest Rate	Gross Interest Next Coupon	Net Interest Next Coupon
Class A	586,33 €	36,12 €	1,1143%	24,89 €	20,41 €
Class B	0,00 €	137,89 €	1,5148%	108,95 €	89,34 €
Bullet	0				

ASSET PURCHASED BY THE FUND: MORTGAGE PARTICIPATION

MORTGAGE PARTICIPACION	ISSUE DATE	CURRENT DATE
Number of MP's	18.269	3.640
MP's Outstanding to be amortised	759.000.019,00	72.487.312,94
MP's Outstanding per Loan to be amortised	41.545,79	19.914,10
Interest Rate	5,16%	5,03%

PREPAYMENT RATE	CURRENT DATE
Monthly Single Rate	11,89%
Average Monthly Single Rate	8,08%
Constant Prepayment Rate from Constitution	12,58%

F.T.H.: BANESTO 1

QUARTERLY BONDS PAYOUT REPORT

August 18, 2009

BONDS. PRINCIPAL	
Previous Balance	76.781.584,54 €
Principal Amortised	4.294.280,92 €
Outstanding Balance	72.487.303,62 €
% of Initial Balance	9,55 %
Principal accrued and unpaid	0,00 €

DATA	
Determination Date	August 11, 2009
Payment Date	August 18, 2009
Last Payment Date	May 18, 2009
Number of Days (Act/360)	92
Reference Interest Rate (%)	0,869 %
Next Payment Date	November 18, 2009

INTEREST PAID	
CLASS A	264.542,88 €
CLASS B	36.678,74 €
Interest accrued and unpaid	0,00 €

RESIDUAL LIFE (YEARS)		
	INITIAL	August 18, 2009
CLASS A	5,2	0,05
CLASS B	8,7	0,05

F.T.H.: BANESTO 1

QUARTERLY COLLATERAL REPORT

August 18, 2009

PRINCIPAL	
Previous Balance	76.781.551,35 €
Principal Amortised	4.294.238,41 €
Outstanding Balance	72.487.312,94 €
Number of Credit Rights	3.640
LTV	33,98%

INTEREST	
Interest received during relevant period	996.510,65 €
Interest accrued during relevant period	959.322,56 €

PRINCIPAL BALANCE IN ARREARS					
	UP to 30 DAYS	30 to 60 DAYS	60 to 90 DAYS	90 to 180 DAYS	180 to 365 DAYS
Principal Balance in Arrears	27.758,81 €	8.932,50 €	3.944,16 €	3.705,03 €	10.398,46 €
Interest accrued on Credit Rights in Arrears	9.402,90 €	3.553,76 €	2.131,44 €	1.055,42 €	365,09 €
Outstanding Balance	1.927.066,20 €	607.755,87 €	196.895,57 €	319.524,22 €	25.349,41 €
Number of Credit Rights	85	26	8	13	6
% of Outstanding Balance	2,66%	0,84 %	0,27 %	0,44 %	0,03 %

WRITE OFF	
Cumulative WRITE OFF as of previous balance	0,00 €
Difference in Actual Period	0,00 €
Cumulative WRITE OFF up to date	0,00 €

F.T.H.: BANESTO 1

QUARTERLY COLLATERAL REPORT

August 18, 2009

JUDICIAL	
Last balance	0,00 €
Difference in Actual Period	0,00 €
Current balance	0,00 €
Contentious CR's number	0

TRANSITORY PROPERTIES	
Last balance	0,00 €
Difference in Actual Period	0,00 €
Current balance	0,00 €
Transitory properties CR's number	0

NET LOSS	
Last balance	0,00 €
Difference in Actual Period	0,00 €
Current balance	0,00 €

F.T.H.: BANESTO 1

QUARTERLY REPORT - ALLOCATION OF CASH

August 18, 2009

TOTAL CASH RECEIVED END OF PERIOD	5.314.825,47 €
CASH RECEIVED - PRINCIPAL	
Amortisation of Credit Rights	4.294.238,41 €
CASH RECEIVED - INTEREST	
Interest received from Credit Rights	996.510,65 €
Interest received under GIC	24.076,41 €
CONTENTIOUS	0,00 €
INCOMES/EXPENSES OF TRANSTORY PROPERTIES	0,00 €
RESERVE FUNDS	0,00 €
OTHERS	0,00 €

TREASURY ACCOUNT STATEMENT	4.349.238,78 €
PRINCIPAL RESERVE FUND	
Previous Balance	4.606.893,08 €
Period utilization	-257.654,30 €
Outstanding Balance	4.349.238,78 €
WITHHOLDING TAXES	0,00 €
ISSUE EXPENSES WITHHELD	0,00 €
OTHERS	0,00 €

TOTAL CASH PAID END OF PERIOD	5.314.825,47 €
Ordinary Expenses	283,83 €
SGFT Fee	4.838,29 €
Interest paid to Bondholders Class A	264.542,88 €
Interest paid to Bondholders Class B	36.678,74 €
Principal withholding Class A	4.294.280,92 €
Principal withholding Class B	0,00 €
Interest Subordinated Loan A	14.705,57 €
Interest Subordinated Loan B	0,00 €
Redemption Subordinated Loan A	257.654,30 €
Redemption Subordinated Loan B	0,00 €
Fixed Fee	6.000,00 €
Variable Fee	693.495,24 €
Utilization of Reseve Fund	-257.654,30 €

F.T.H.: BANESTO 1

CREDIT ENHACEMENT AND SUBORDINATED LOAN

August 18, 2009

CREDIT ENHACEMENT		
CONCEPTS	INITIAL	August 18, 2009
SUBORDINATED ISSUE	3,50 %	10,47 %
PRINCIPAL RESERVE FUND	18.975.000,00 € (2,50 %)	4.349.238,78 € (6,00 %)

SUBORDINATED LOANS		
CONCEPTS	INITIAL	August 18, 2009
SUBORDINATED LOAN A		
Total Outstanding Subordinated Loan	20.496.916,81 €	4.350.776,45 €
Interest Rate	2,730 %	0,869%
SUBORDINATED LOAN B		
Total Outstanding Subordinated Loan	1.414.873,97 €	0,00 €
Interest Rate	2,730 %	0,000 %

F.T.H.: BANESTO 1

TRIGGERS OF THE MODEL

August 18, 2009

RESERVE FUND's TRIGGERS	
1. IF 1.a) IS HIGHER THAN 1.b) THERE IS NO REDEMPTION OF RESERVE FUND:	
1.a) MP'S IN ARREARS OVER 90 DAYS	344.873,63 €
1.b) 3% MP'S OUTSTANDING BALANCE	2.174.619,39 €
2. IF 2.a) IS LOWER THAN 2.b) THERE IS NO REDEMPTION OF RESERVE FUND:	
2.a) INTEREST RATE MP'S	5,03%
2.b) WEIGHTED AVERAGE RATE BONDS A AND B + 0,33%	1,89%
3. IF 3.a) IS HIGHER THAN 3.b) THERE IS NO REDEMPTION OF RESERVE FUND:	
3.a) WRITTE OFF	0,00 €
3.b) 0,025% INITIAL OUTSTANDING BALANCE MP'S * N° PAYMENT DATES	7.400.250,19 €

THESE LEVELS HAVE NOT BEEN REACHED, SO THE RESERVE FUND HAS DECREASED.

BOND's TRIGGERS	
1. IF 1.a) IS HIGHER THAN 1.b) THERE IS NO REDEMPTION OF CLASS B:	
1.a) MP'S IN ARREARS OVER 90 DAYS	344.873,63 €
1.b) 7% MP'S OUTSTANDING BALANCE	5.074.111,91 €

THIS LEVEL HAS NOT BEEN REACHED. HOWEVER, CLASS B WON'T REDEMPY BECAUSE HAS BEEN REACHED

7.590.000€

F.T.H.: BANESTO 1

DEFINITIONS

August 18, 2009

DETERMINATION DATE Means the date in which the Gestora will carry out the necessary calculations, on behalf of the Fund, for the distribution of the available funds at this date, according with the Order of Priority of Payments.

All the information regarding the Assets (Outstanding Balance of the Credit Rights, arrears' tables, transitory properties, stratification tables, etc.) are referred to this mentioned date.

WRITE OFF Those loans that at a given date are unpaid for a period equal or higher to 12 or 18 months (according to Prospectus) of arrears in due payments.

NET LOSSES Those loans which the Originator considers that will not recover (net of recoveries).

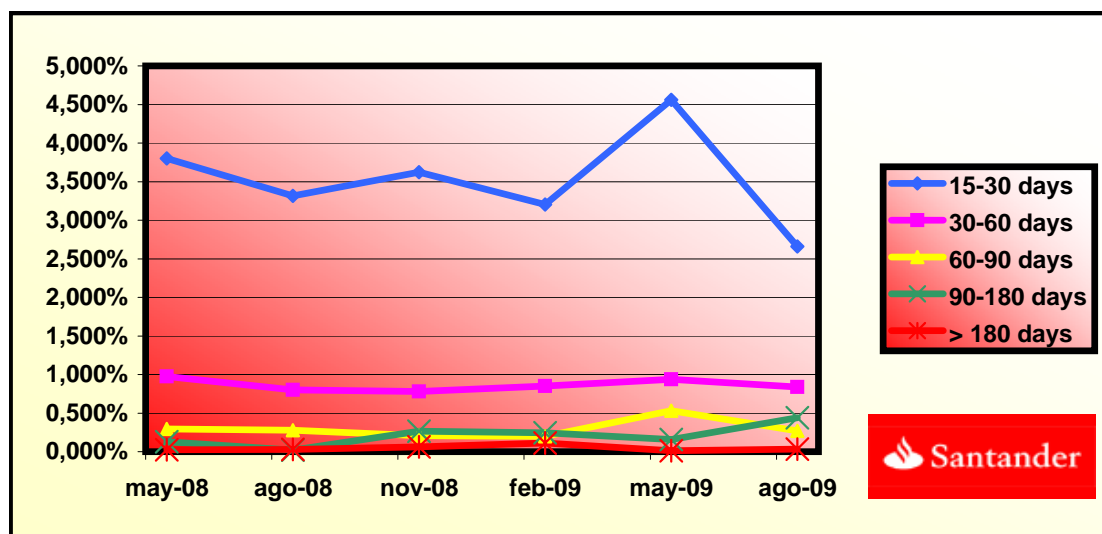
TRANSITORY PROPERTIES Those assets in the balance of the Fund as a consequence of a judicial or non-judicial process.

JUDICIAL Loans in which the Originator will take legal actions. This amount is included in the bucket > 180 days in arrears.

FONDO DE TITULIZACIÓN HIPOTECARIA
BANESTO 1

HISTORICAL ARREARS REPORT
AUGUST 18TH, 2009

Data	May-08	Aug-08	Nov-08	Feb-09	May-09	Aug-09
15-30 days	3,800%	3,315%	3,624%	3,205%	4,559%	2,658%
30-60 days	0,976%	0,799%	0,782%	0,851%	0,937%	0,838%
60-90 days	0,294%	0,278%	0,207%	0,200%	0,530%	0,272%
90-180 days	0,130%	0,019%	0,264%	0,243%	0,157%	0,441%
> 180 days	0,024%	0,029%	0,064%	0,113%	0,013%	0,035%



**FONDO DE TITULIZACIÓN HIPOTECARIA
BANESTO 1**

**LTV
AUGUST 18TH, 2009**

LTV (%)	OUTS. BALANC	% OUTSTANDING	LOANS	% LOANS
0,00 - 9,99	7.260,67	5,86%	766	21,04%
10,00 - 19,99	13.613,81	18,75%	1034	28,40%
20,00 - 29,99	12.524,75	17,25%	625	17,17%
30,00 - 39,99	14.263,56	19,64%	482	13,24%
40,00 - 49,99	13.738,17	18,92%	398	10,93%
50,00 - 59,99	11.754,17	16,91%	285	7,82%
60,00 - 69,99	2.040,78	2,81%	42	1,15%
70,00 - 79,99	36,03	0,04%	1	0,02%
>80	361,27	0,49%	7	0,19%

PREPAYMENTS - BANESTO 1

August -18th 2009

zº

Tasa mensual actual anualizada:	11,89%
Tasa últimos 12 meses anualizada:	8,08%
Tasa anualizada desde Constitución del Fondo	12,58%

DATE	OUTSTANDING BEFORE PREPAYMENT	REAL OUTSTANDING	PREPAYMENT VECTOR	REMAINING AT THE END OF THE MONTH	AVERAGE SINGLE MONTHLY MORTALITY	CPR	MONTHLY SINGLE MONTHLY MORTALITY	CPR	OUTSTANDING AFTER PREPAYMENT	PRINCIPAL AVAILABLE
			1,11%					8,08%		
	759.000,02		100,00%	100,00%					759.000,000000	759.000,000000
sep-99	755.366,17	744.506,7	98,89%	98,56%	1,44%	15,95%	1,44%	15,95%	746.951,9	
oct-99	751.716,69	724.010,7	97,78%	96,31%	1,86%	20,17%	2,28%	24,18%	735.062,7	
nov-99	748.051,52	716.871,1	96,70%	95,83%	1,41%	15,66%	0,50%	5,85%	723.330,5	35.669
dic-99	744.370,59	706.796,1	95,62%	94,95%	1,29%	14,39%	0,92%	10,47%	711.753,4	
ene-00	740.674,95	696.426,4	94,55%	94,03%	1,22%	13,74%	0,98%	11,10%	700.330,6	
feb-00	736.963,42	689.571,8	93,50%	93,57%	1,10%	12,45%	0,49%	5,67%	689.059,1	34.271
mar-00	733.235,93	680.287,7	92,46%	92,78%	1,07%	12,06%	0,84%	9,68%	677.937,1	
abr-00	729.492,41	672.739,1	91,43%	92,22%	1,01%	11,44%	0,60%	6,99%	666.962,6	
may-00	725.732,80	666.330,6	90,41%	91,81%	0,94%	10,76%	0,44%	5,15%	656.134,0	32.925
jun-00	721.957,01	659.284,5	89,40%	91,32%	0,90%	10,32%	0,54%	6,29%	645.449,5	
jul-00	718.172,25	651.086,5	88,41%	90,66%	0,89%	10,15%	0,72%	8,34%	634.913,6	
ago-00	714.371,21	642.166,4	87,42%	89,89%	0,88%	10,11%	0,85%	9,68%	624.518,1	31.616
sep-00	710.553,83	623.658,7	86,45%	87,77%	1,00%	11,34%	2,36%	24,92%	614.261,3	
oct-00	706.720,03	616.983,1	85,49%	87,30%	0,97%	10,99%	0,53%	6,22%	604.141,5	
nov-00	702.869,74	609.181,2	84,53%	86,67%	0,95%	10,81%	0,72%	8,35%	594.157,0	30.361
dic-00	699.002,90	601.490,1	83,59%	86,05%	0,93%	10,66%	0,72%	8,27%	584.306,1	
ene-01	695.141,26	592.596,5	82,66%	85,25%	0,93%	10,65%	0,93%	10,62%	574.605,3	
feb-01	691.263,01	584.606,2	81,74%	84,57%	0,93%	10,57%	0,79%	9,13%	565.034,5	29.123
mar-01	687.368,09	577.868,5	80,83%	84,07%	0,91%	10,38%	0,59%	6,88%	555.592,2	
abr-01	683.456,42	570.372,4	79,93%	83,45%	0,90%	10,28%	0,73%	8,44%	546.276,7	
may-01	679.527,93	539.849,8	79,04%	79,44%	1,09%	12,32%	4,80%	44,61%	537.086,5	27.948
jun-01	675.582,55	533.640,9	78,16%	78,99%	1,07%	12,07%	0,57%	6,66%	528.020,1	
jul-01	671.656,44	526.278,4	77,29%	78,36%	1,05%	11,95%	0,80%	9,22%	519.103,9	
ago-01	667.713,46	519.242,9	76,43%	77,76%	1,04%	11,82%	0,75%	8,68%	510.307,9	26.779
sep-01	663.753,52	513.742,8	75,57%	77,40%	1,02%	11,57%	0,47%	5,48%	501.630,7	
oct-01	659.776,55	480.522,3	74,73%	72,83%	1,21%	13,61%	5,90%	51,81%	493.070,8	
nov-01	655.782,49	472.319,1	73,90%	72,02%	1,21%	13,57%	1,11%	12,52%	484.626,6	25.681
dic-01	651.771,24	465.247,6	73,08%	71,38%	1,20%	13,45%	0,89%	10,18%	476.296,9	
ene-02	647.781,02	457.234,1	72,26%	70,58%	1,19%	13,42%	1,12%	12,61%	468.107,8	
feb-02	643.773,63	449.737,6	71,46%	69,86%	1,19%	13,37%	1,03%	11,65%	460.029,8	24.597
mar-02	639.749,01	443.596,1	70,66%	69,34%	1,17%	13,22%	0,75%	8,58%	452.061,4	
abr-02	635.707,09	437.704,4	69,88%	68,85%	1,16%	13,06%	0,70%	8,09%	444.201,5	
may-02	631.647,79	423.430,0	69,10%	67,04%	1,20%	13,54%	2,64%	27,46%	436.448,5	23.581
jun-02	627.571,03	417.177,8	68,33%	66,47%	1,19%	13,42%	0,84%	9,59%	428.801,2	
jul-02	623.526,65	410.651,1	67,57%	65,86%	1,19%	13,34%	0,93%	10,56%	421.292,0	
ago-02	619.464,87	404.214,9	66,81%	65,25%	1,18%	13,26%	0,92%	10,52%	413.885,3	22.563
sep-02	615.385,64	399.061,8	66,07%	64,85%	1,16%	13,11%	0,62%	7,20%	406.579,7	
oct-02	611.288,85	393.346,1	65,33%	64,35%	1,15%	13,00%	0,77%	8,88%	399.374,2	
nov-02	607.174,46	388.135,0	64,61%	63,92%	1,14%	12,86%	0,66%	7,60%	392.267,3	21.618

PREPAYMENTS - BANESTO 1

August -18th 2009

zº

Tasa mensual actual anualizada:	11,89%
Tasa últimos 12 meses anualizada:	8,08%
Tasa anualizada desde Constitución del Fondo	12,58%

DATE	OUTSTANDING BEFORE PREPAYMENT	REAL OUTSTANDING	PREPAYMENT VECTOR	REMAINING AT THE END OF THE MONTH	AVERAGE SINGLE MONTHLY MORTALITY	CPR	MONTHLY SINGLE MONTHLY MORTALITY	CPR	OUTSTANDING AFTER PREPAYMENT	PRINCIPAL AVAILABLE
			1,11%					8,08%		
dic-02	603.042,37	382.514,0	63,89%	63,43%	1,13%	12,77%	0,77%	8,89%	385.257,8	
ene-03	598.942,89	375.287,7	63,17%	62,66%	1,13%	12,79%	1,22%	13,67%	378.376,5	
feb-03	594.825,78	369.796,7	62,47%	62,17%	1,13%	12,70%	0,78%	8,98%	371.589,7	20.678
mar-03	590.690,97	363.315,7	61,77%	61,51%	1,12%	12,68%	1,06%	12,06%	364.896,1	
abr-03	586.538,38	357.354,6	61,09%	60,93%	1,12%	12,64%	0,94%	10,76%	358.294,8	
may-03	582.367,93	353.110,1	60,41%	60,63%	1,11%	12,49%	0,48%	5,61%	351.784,4	19.805
jun-03	578.179,55	346.745,8	59,73%	59,97%	1,11%	12,49%	1,09%	12,33%	345.363,9	
jul-03	574.043,22	341.533,4	59,07%	59,50%	1,10%	12,42%	0,79%	9,12%	339.073,5	
ago-03	569.889,11	336.072,3	58,41%	58,97%	1,09%	12,37%	0,88%	10,08%	332.870,1	18.914
sep-03	565.717,13	331.180,1	57,76%	58,54%	1,09%	12,29%	0,73%	8,41%	326.752,4	
oct-03	561.527,21	326.881,0	57,12%	58,21%	1,08%	12,18%	0,56%	6,54%	320.719,5	
nov-03	557.319,28	321.481,7	56,48%	57,68%	1,07%	12,14%	0,91%	10,38%	314.770,3	18.100
dic-03	553.093,25	315.840,9	55,85%	57,10%	1,07%	12,13%	1,00%	11,40%	308.903,7	
ene-04	548.912,04	309.562,7	55,23%	56,40%	1,07%	12,16%	1,24%	13,92%	303.153,5	
feb-04	544.712,84	304.432,4	54,61%	55,89%	1,07%	12,13%	0,90%	10,27%	297.483,3	17.287
mar-04	540.495,59	297.021,1	54,00%	54,95%	1,08%	12,25%	1,67%	18,33%	291.892,0	
abr-04	536.260,21	291.660,6	53,40%	54,39%	1,08%	12,23%	1,03%	11,67%	286.378,7	
may-04	532.006,61	286.886,9	52,81%	53,93%	1,08%	12,19%	0,85%	9,74%	280.942,4	16.541
jun-04	527.734,72	280.095,5	52,22%	53,08%	1,09%	12,28%	1,58%	17,37%	275.582,1	
jul-04	523.521,08	275.206,3	51,64%	52,57%	1,08%	12,26%	0,95%	10,87%	270.336,4	
ago-04	519.289,32	270.838,2	51,06%	52,16%	1,08%	12,21%	0,79%	9,03%	265.164,2	15.778
sep-04	515.039,36	267.426,6	50,49%	51,92%	1,07%	12,10%	0,44%	5,21%	260.064,5	
oct-04	510.771,12	261.261,4	49,93%	51,15%	1,08%	12,17%	1,49%	16,47%	255.036,3	
nov-04	506.484,54	256.789,6	49,38%	50,70%	1,07%	12,14%	0,88%	10,06%	250.078,8	15.085
dic-04	502.179,52	252.707,0	48,83%	50,32%	1,07%	12,08%	0,75%	8,60%	245.191,2	
ene-05	497.920,85	246.605,8	48,28%	49,53%	1,08%	12,17%	1,58%	17,39%	240.403,8	
feb-05	493.643,86	241.670,7	47,74%	48,96%	1,08%	12,18%	1,15%	12,98%	235.683,8	14.395
mar-05	489.348,49	237.217,4	47,21%	48,48%	1,07%	12,16%	0,98%	11,16%	231.030,5	
abr-05	485.034,64	232.487,1	46,69%	47,93%	1,08%	12,17%	1,12%	12,67%	226.443,0	
may-05	480.702,25	227.572,6	46,17%	47,34%	1,08%	12,19%	1,23%	13,82%	221.920,5	13.763
jun-05	476.351,23	222.315,3	45,65%	46,67%	1,08%	12,25%	1,42%	15,75%	217.462,2	
jul-05	472.056,00	217.116,0	45,14%	45,99%	1,09%	12,30%	1,45%	16,08%	213.100,8	
ago-05	467.742,31	212.578,7	44,64%	45,45%	1,09%	12,32%	1,19%	13,35%	208.801,3	13.119
sep-05	463.410,07	209.003,7	44,14%	45,10%	1,08%	12,27%	0,76%	8,78%	204.563,0	
oct-05	459.059,19	204.702,6	43,65%	44,59%	1,09%	12,28%	1,13%	12,74%	200.385,1	
nov-05	454.689,62	200.063,2	43,17%	44,00%	1,09%	12,31%	1,33%	14,81%	196.266,8	12.534
dic-05	450.301,25	195.722,0	42,68%	43,46%	1,09%	12,33%	1,22%	13,66%	192.207,4	
ene-06	446.026,52	190.309,7	42,21%	42,67%	1,10%	12,43%	1,83%	19,91%	188.262,0	
feb-06	441.733,41	185.936,4	41,74%	42,09%	1,10%	12,46%	1,35%	15,03%	184.373,0	11.894
mar-06	437.421,84	181.929,2	41,27%	41,59%	1,10%	12,48%	1,19%	13,39%	180.539,7	
abr-06	433.091,73	178.152,7	40,81%	41,14%	1,10%	12,48%	1,10%	12,40%	176.761,3	

PREPAYMENTS - BANESTO 1

August -18th 2009

z⁰

Tasa mensual actual anualizada:	11,89%
Tasa últimos 12 meses anualizada:	8,08%
Tasa anualizada desde Constitución del Fondo	12,58%

DATE	OUTSTANDING BEFORE PREPAYMENT	REAL OUTSTANDING	PREPAYMENT VECTOR	REMAINING AT THE END OF THE MONTH	AVERAGE SINGLE MONTHLY MORTALITY	CPR	MONTHLY SINGLE MONTHLY MORTALITY	CPR	OUTSTANDING AFTER PREPAYMENT	PRINCIPAL AVAILABLE
			1,11%					8,08%		
may-06	428.743,00	156.690,7	40,36%	36,55%	1,24%	13,85%	11,15%	75,81%	173.037,2	11.336
jun-06	424.375,57	153.041,7	39,91%	36,06%	1,24%	13,87%	1,32%	14,78%	169.366,6	
jul-06	420.174,12	149.697,0	39,47%	35,63%	1,24%	13,86%	1,21%	13,56%	165.821,9	
ago-06	415.954,60	146.459,3	39,03%	35,21%	1,23%	13,85%	1,17%	13,17%	162.328,1	10.709
sep-06	411.716,94	143.857,4	38,59%	34,94%	1,23%	13,80%	0,77%	8,81%	158.884,5	
oct-06	407.461,05	140.937,2	38,16%	34,59%	1,23%	13,77%	1,01%	11,43%	155.490,5	
nov-06	403.186,87	137.741,9	37,74%	34,16%	1,23%	13,77%	1,23%	13,81%	152.145,6	10.182
dic-06	398.894,30	134.799,2	37,32%	33,79%	1,23%	13,75%	1,08%	12,25%	148.849,0	
ene-07	394.765,61	131.451,2	36,90%	33,30%	1,23%	13,78%	1,46%	16,22%	145.667,4	
feb-07	390.619,17	128.676,5	36,49%	32,94%	1,23%	13,76%	1,07%	12,13%	142.531,8	9.614
mar-07	386.454,89	126.075,8	36,08%	32,62%	1,22%	13,73%	0,97%	10,99%	139.441,5	
abr-07	382.272,71	123.471,3	35,68%	32,30%	1,22%	13,71%	0,99%	11,30%	136.396,0	
may-07	378.072,54	120.888,4	35,28%	31,97%	1,22%	13,68%	1,00%	11,41%	133.394,7	9.137
jun-07	373.854,32	118.444,6	34,89%	31,68%	1,22%	13,65%	0,92%	10,45%	130.437,1	
jul-07	369.795,33	115.964,8	34,50%	31,36%	1,21%	13,63%	1,02%	11,57%	127.583,7	
ago-07	365.718,88	113.579,7	34,12%	31,06%	1,21%	13,60%	0,97%	10,99%	124.771,7	8.623
sep-07	361.624,91	111.659,1	33,74%	30,88%	1,20%	13,53%	0,58%	6,72%	122.000,7	
oct-07	357.513,33	109.441,2	33,36%	30,61%	1,20%	13,49%	0,86%	9,84%	119.270,0	
nov-07	353.384,07	107.216,2	32,99%	30,34%	1,20%	13,46%	0,89%	10,15%	116.579,2	8.193
dic-07	349.237,06	105.269,9	32,62%	30,14%	1,19%	13,40%	0,65%	7,52%	113.927,7	
ene-08	345.374,17	102.793,0	32,26%	29,76%	1,19%	13,41%	1,26%	14,12%	111.412,5	
feb-08	341.494,66	100.964,8	31,90%	29,57%	1,19%	13,36%	0,66%	7,67%	108.934,0	7.645
mar-08	337.598,48	98.952,0	31,54%	29,31%	1,18%	13,32%	0,86%	9,87%	106.491,5	
abr-08	333.685,54	97.403,2	31,19%	29,19%	1,18%	13,24%	0,41%	4,82%	104.084,7	
may-08	329.755,78	95.575,1	30,84%	28,98%	1,17%	13,20%	0,71%	8,17%	101.713,1	7.221
jun-08	325.809,12	93.936,8	30,50%	28,83%	1,17%	13,13%	0,52%	6,11%	99.376,3	
jul-08	322.315,43	92.198,4	30,16%	28,61%	1,16%	13,10%	0,79%	9,04%	97.215,6	
ago-08	318.806,72	90.460,1	29,83%	28,37%	1,16%	13,06%	0,81%	9,25%	95.086,2	6.627
sep-08	315.282,93	89.071,3	29,49%	28,25%	1,15%	12,99%	0,43%	5,09%	92.987,7	
oct-08	311.743,98	87.589,7	29,16%	28,10%	1,15%	12,93%	0,55%	6,37%	90.919,7	
nov-08	308.189,81	86.120,9	28,84%	27,94%	1,14%	12,88%	0,54%	6,33%	88.881,9	6.204
dic-08	304.620,37	84.553,4	28,52%	27,76%	1,14%	12,83%	0,67%	7,75%	86.873,9	
ene-09	301.308,07	82.779,7	28,20%	27,47%	1,14%	12,82%	1,02%	11,59%	84.972,1	
feb-09	297.981,53	81.248,6	27,89%	27,27%	1,13%	12,78%	0,75%	8,68%	83.097,8	5.784
mar-09	294.640,68	79.885,7	27,58%	27,11%	1,13%	12,73%	0,56%	6,55%	81.250,9	
abr-09	291.285,47	78.149,7	27,27%	26,83%	1,13%	12,72%	1,05%	11,86%	79.430,9	
may-09	287.915,84	76.781,6	26,97%	26,67%	1,12%	12,68%	0,60%	6,98%	77.637,5	83.098
jun-09	284.531,71	75.429,0	26,66%	26,51%	1,12%	12,63%	0,59%	6,89%	75.870,2	
jul-09	281.274,85	73.965,5	26,37%	26,30%	1,12%	12,60%	0,80%	9,24%	74.166,3	
ago-09	278.003,98	72.487,3	26,07%	26,07%	1,11%	12,58%	0,85%	9,69%	72.487,3	

DEAL
 MEZZ. DECLINN
 MEZZ. STOPS DECLINN
 VIDA RESIDUAL DESDE

759.000
 8,00%
 1,00%
11/08/09

DATE		PRINCIPAL AVAILABLE	SENIOR NOTES	MEZZANIE NOTES	CLASS A PRINCIPAL	AVERAGE LIFE CLASS A	CLASS B PRINCIPAL	AVERAGE LIFE CLASS B
						0,05		0,05
11/09/99		0	732.400.000	26.600.000	0	0	0	0
11/10/99	1	0	732.400.000	26.600.000	0	0	0	0
11/11/99	1	35.669.490	732.400.000	26.600.000	35.669.490	(127.019.053.594)	0	0
11/12/99	1	0	696.730.510	26.600.000	0	0	0	0
11/01/00	1	0	696.730.510	26.600.000	0	0	0	0
11/02/00	1	34.271.398	696.730.510	26.600.000	34.271.398	(118.887.478.084)	0	0
11/03/00	1	0	662.459.113	26.600.000	0	0	0	0
11/04/00	1	0	662.459.113	26.600.000	0	0	0	0
11/05/00	1	32.925.067	662.459.113	26.600.000	32.925.067	(111.253.802.105)	0	0
11/06/00	1	0	629.534.045	26.600.000	0	0	0	0
11/07/00	1	0	629.534.045	26.600.000	0	0	0	0
11/08/00	1	31.615.928	629.534.045	26.600.000	31.615.928	(103.921.555.246)	0	0
11/09/00	1	0	597.918.117	26.600.000	0	0	0	0
11/10/00	1	0	597.918.117	26.600.000	0	0	0	0
11/11/00	1	30.361.113	597.918.117	26.600.000	30.361.113	(97.003.754.912)	0	0
11/12/00	1	0	567.557.005	26.600.000	0	0	0	0
11/01/01	1	0	567.557.005	26.600.000	0	0	0	0
11/02/01	1	29.122.501	567.557.005	26.600.000	29.122.501	(90.367.119.092)	0	0
11/03/01	1	0	538.434.504	26.600.000	0	0	0	0
11/04/01	1	0	538.434.504	26.600.000	0	0	0	0
11/05/01	1	27.948.007	538.434.504	26.600.000	27.948.007	(84.235.292.394)	0	0
11/06/01	1	0	510.486.497	26.600.000	0	0	0	0
11/07/01	1	0	510.486.497	26.600.000	0	0	0	0
11/08/01	1	26.778.555	510.486.497	26.600.000	26.778.555	(78.246.937.386)	0	0
11/09/01	1	0	483.707.943	26.600.000	0	0	0	0
11/10/01	1	0	483.707.943	26.600.000	0	0	0	0
11/11/01	1	25.681.301	483.707.943	26.600.000	25.681.301	(72.678.081.006)	0	0
11/12/01	1	0	458.026.642	26.600.000	0	0	0	0
11/01/02	1	0	458.026.642	26.600.000	0	0	0	0
11/02/02	1	24.596.878	458.026.642	26.600.000	24.596.878	(67.346.253.027)	0	0
11/03/02	1	0	433.429.763	26.600.000	0	0	0	0
11/04/02	1	0	433.429.763	26.600.000	0	0	0	0
11/05/02	1	23.581.266	433.429.763	26.600.000	23.581.266	(62.466.774.532)	0	0
11/06/02	1	0	409.848.497	26.600.000	0	0	0	0
11/07/02	1	0	409.848.497	26.600.000	0	0	0	0
11/08/02	1	22.563.216	409.848.497	26.600.000	22.563.216	(57.694.143.251)	0	0
11/09/02	1	0	387.285.281	26.600.000	0	0	0	0
11/10/02	1	0	387.285.281	26.600.000	0	0	0	0
11/11/02	1	21.618.019	387.285.281	26.600.000	21.618.019	(53.288.416.152)	0	0
11/12/02	1	0	365.667.262	26.600.000	0	0	0	0
11/01/03	1	0	365.667.262	26.600.000	0	0	0	0
11/02/03	1	20.677.596	365.667.262	26.600.000	20.677.596	(49.067.934.763)	0	0
11/03/03	1	0	344.989.667	26.600.000	0	0	0	0
11/04/03	1	0	344.989.667	26.600.000	0	0	0	0
11/05/03	1	19.805.272	344.989.667	26.600.000	19.263.375	(43.997.548.808)	541.897	(1.237.692.018)
11/06/03	1	0	325.726.291	26.058.103	0	0	0	0
11/07/03	1	0	325.726.291	26.058.103	0	0	0	0
11/08/03	1	18.914.323	325.726.291	26.058.103	17.513.262	(38.389.070.995)	1.401.061	(3.071.125.680)
11/09/03	1	0	308.213.029	24.657.042	0	0	0	0
11/10/03	1	0	308.213.029	24.657.042	0	0	0	0
11/11/03	1	18.099.780	308.213.029	24.657.042	16.759.056	(35.194.017.632)	1.340.724	(2.815.521.411)
11/12/03	1	0	291.453.973	23.316.318	0	0	0	0
11/01/04	1	0	291.453.973	23.316.318	0	0	0	0
11/02/04	1	17.287.013	291.453.973	23.316.318	16.006.494	(32.141.039.020)	1.280.519	(2.571.283.122)
11/03/04	1	0	275.447.480	22.035.798	0	0	0	0
11/04/04	1	0	275.447.480	22.035.798	0	0	0	0
11/05/04	1	16.540.905	275.447.480	22.035.798	15.315.653	(29.375.421.600)	1.225.252	(2.350.033.728)
11/06/04	1	0	260.131.827	20.810.546	0	0	0	0
11/07/04	1	0	260.131.827	20.810.546	0	0	0	0
11/08/04	1	15.778.178	260.131.827	20.810.546	14.609.424	(26.676.809.077)	1.168.754	(2.134.144.726)

DEAL
 MEZZ. DECLINN
 MEZZ. STOPS DECLINN
 VIDA RESIDUAL DESDE

759.000
 8,00%
 1,00%
11/08/09

DATE		PRINCIPAL AVAILABLE	SENIOR NOTES	MEZZANIE NOTES	CLASS A PRINCIPAL	AVERAGE LIFE CLASS A	CLASS B PRINCIPAL	AVERAGE LIFE CLASS B
11/09/04	1	0	245.522.403	19.641.792	0	0	0	0
11/10/04	1	0	245.522.403	19.641.792	0	0	0	0
11/11/04	1	15.085.348	245.522.403	19.641.792	13.967.915	(24.220.364.349)	1.117.433	(1.937.629.148)
11/12/04	1	0	231.554.488	18.524.359	0	0	0	0
11/01/05	1	0	231.554.488	18.524.359	0	0	0	0
11/02/05	1	14.395.018	231.554.488	18.524.359	13.328.721	(21.885.759.433)	1.066.298	(1.750.860.755)
11/03/05	1	0	218.225.767	17.458.061	0	0	0	0
11/04/05	1	0	218.225.767	17.458.061	0	0	0	0
11/05/05	1	13.763.303	218.225.767	17.458.061	12.743.799	(19.791.120.002)	1.019.504	(1.583.289.600)
11/06/05	1	0	205.481.968	16.438.557	0	0	0	0
11/07/05	1	0	205.481.968	16.438.557	0	0	0	0
11/08/05	1	13.119.202	205.481.968	16.438.557	12.147.409	(17.747.364.880)	971.793	(1.419.789.190)
11/09/05	1	0	193.334.559	15.466.765	0	0	0	0
11/10/05	1	0	193.334.559	15.466.765	0	0	0	0
11/11/05	1	12.534.496	193.334.559	15.466.765	11.606.015	(15.888.634.361)	928.481	(1.271.090.749)
11/12/05	1	0	181.728.544	14.538.284	0	0	0	0
11/01/06	1	0	181.728.544	14.538.284	0	0	0	0
11/02/06	1	11.893.799	181.728.544	14.538.284	11.012.777	(14.063.316.468)	881.022	(1.125.065.317)
11/03/06	1	0	170.715.767	13.657.261	0	0	0	0
11/04/06	1	0	170.715.767	13.657.261	0	0	0	0
11/05/06	1	11.335.836	170.715.767	13.657.261	10.496.144	(12.469.419.352)	839.692	(997.553.548)
11/06/06	1	0	160.219.622	12.817.570	0	0	0	0
11/07/06	1	0	160.219.622	12.817.570	0	0	0	0
11/08/06	1	10.709.123	160.219.622	12.817.570	9.915.855	(10.867.776.734)	793.268	(869.422.139)
11/09/06	1	0	150.303.768	12.024.301	0	0	0	0
11/10/06	1	0	150.303.768	12.024.301	0	0	0	0
11/11/06	1	10.182.488	150.303.768	12.024.301	9.428.230	(9.465.942.539)	754.258	(757.275.403)
11/12/06	1	0	140.875.538	11.270.043	0	0	0	0
11/01/07	1	0	140.875.538	11.270.043	0	0	0	0
11/02/07	1	9.613.775	140.875.538	11.270.043	8.901.644	(8.118.299.056)	712.131	(649.463.924)
11/03/07	1	0	131.973.894	10.557.912	0	0	0	0
11/04/07	1	0	131.973.894	10.557.912	0	0	0	0
11/05/07	1	9.137.082	131.973.894	10.557.912	8.460.261	(6.962.794.699)	676.821	(557.023.576)
11/06/07	1	0	123.513.634	9.881.091	0	0	0	0
11/07/07	1	0	123.513.634	9.881.091	0	0	0	0
11/08/07	1	8.623.001	123.513.634	9.881.091	7.984.261	(5.836.494.465)	638.741	(466.919.557)
11/09/07	1	0	115.529.373	9.242.350	0	0	0	0
11/10/07	1	0	115.529.373	9.242.350	0	0	0	0
11/11/07	1	8.192.532	115.529.373	9.242.350	7.585.678	(4.847.248.382)	606.854	(387.779.871)
11/12/07	1	0	107.943.695	8.635.496	0	0	0	0
11/01/08	1	0	107.943.695	8.635.496	0	0	0	0
11/02/08	1	7.645.238	107.943.695	8.635.496	6.599.742	(3.610.059.038)	1.045.496	(571.886.083)
11/03/08	1	0	101.343.952	7.590.000	0	0	0	0
11/04/08	1	0	101.343.952	7.590.000	0	0	0	0
11/05/08	1	7.220.820	101.343.952	7.590.000	7.220.820	(3.299.914.750)	0	0
11/06/08	1	0	94.123.132	7.590.000	0	0	0	0
11/07/08	1	0	94.123.132	7.590.000	0	0	0	0
11/08/08	1	6.626.961	94.123.132	7.590.000	6.626.961	(2.418.840.804)	0	0
11/09/08	1	0	87.496.171	7.590.000	0	0	0	0
11/10/08	1	0	87.496.171	7.590.000	0	0	0	0
11/11/08	1	6.204.248	87.496.171	7.590.000	6.204.248	(1.693.759.711)	0	0
11/12/08	1	0	81.291.923	7.590.000	0	0	0	0
11/01/09	1	0	81.291.923	7.590.000	0	0	0	0
11/02/09	1	5.784.075	81.291.923	7.590.000	5.784.075	(1.046.917.520)	0	0
11/03/09	1	0	75.507.849	7.590.000	0	0	0	0
11/04/09	1	0	75.507.849	7.590.000	0	0	0	0
11/05/09	1	83.097.849	75.507.849	7.590.000	75.507.849	(6.946.722.072)	7.590.000	(698.280.000)