



F.T.H.: BANESTO 4

DESIREE PEREZ MONTORO

ANALYST

SANTANDER DE TITULIZACION, S.G.F.T, S.A.

CIUDAD GRUPO SANTANDER

28660 BOADILLA DEL MONTE

desperez@gruposantander.com

Tel: 912893278



NAME OF THE FUND:

F.T.H.: BANESTO 4

INFORMATION AT:

QUARTER/SEMESTER:

December 15, 2009 - March 15, 2010

YEAR:

2010

Acting on behalf of Santander de Titulización S.G.F.T., S.A. as General Manager:	Signature:
IGNACIO ORTEGA GAVARA - GENERAL MANAGER	

I. DATA OF THE FUND

Constitution Date	December 15, 2003	Paying Agent	BANESTO	
Disbursement Date	December 18, 2003	Negotiation Market	AIAF	
Final Date of Redemption	March 15, 2038	Ratings Agencies	STANDARD & POORS	
Management Company	SANTANDER DE TITULIZACION, S.G.F.T, S.A.	Rating	Initial	Current
Credit Rights's Seller	BANESTO	CLASS A	AAA	AAA
		CLASS B	A	A

II. SECURITIES ISSUED CHARGED TO THE FUND: SECURITISATION BONDS

CLASS PRIORITY ISIN CODE	NUM BONDS	NOMINAL			
			Initial	Current	%Act/In
CLASS A ES0339774004	14.550	Nominal per Bond	100.000,00	31.762,64	
		Total Nominal	1.455.000.000,00	462.146.412,00	31,76 %
CLASS B ES0339774012	450	Nominal per Bond	100.000,00	100.000,00	
		Total Nominal	45.000.000,00	45.000.000,00	100,00 %

REDEMPTION AND INTEREST OF THE BONDS					
Current			Next		
Payment Date of the Current Period March 15, 2010			Next Payment Date June 15, 2010		
	Redemption of the Bonds	Gross Interest	Interest Rate	Gross Interest Next Coupon	Net Interest Next Coupon
CLASS A	1.223,76 €	75,37 €	0,8500 %	69,00 €	55,89 €
CLASS B	0,00 €	341,00 €	1,3000 %	332,22 €	269,10 €
Accrued amortisation due not payed	0,00 €				
Scheduled Amortisation	NO				

III. ASSET PURCHASED BY THE FUND: CREDIT RIGHTS

CREDIT RIGHTS	ISSUE DATE	CURRENT DATE
Numbre of CR's	19.736	9.588
CR's Outstanding to be amortised	1.500.001.687,69	507.146.460,29
CR's Outstanding per Loan to be amortised	76.003,33	52.893,87
Interest Rate	3,73 %	2,70 %

PREPAYMENT RATE	CURRENT SITUATION
Monthly Single Rate	3,77 %
Average Monthly Single Rate	8,70 %
Constant Prepayment Rate from Constitution	12,23 %

CURRENT DELINQUENCY	Up to 1 month	From 1 to 6 months	Greater than 6 months
Debt Due (Principal + Interest)	138.460,95	68.437,25	14.854,28
Debt to be amortised	0,00	0,00	507.003.013,95
Total Debt	138.460,95	68.437,25	507.017.868,23

F.T.H.: BANESTO 4

QUARTERLY BONDS PAYOUT REPORT

March 15, 2010

BONDS. PRINCIPAL	
Previous Balance	524.952.120,00 €
Principal Amortised	17.805.708,00 €
Outstanding Balance	507.146.412,00 €
% of Initial Balance	33,81 %
Principal accrued and unpaid	0,00 €

DATA	
Determination Date	March 08, 2010
Payment Date	March 15, 2010
Last Payment Date	December 15, 2009
Number of Days (Act/360)	90
Reference Interest Rate (%)	0,650 %
Next Payment Date	June 15, 2010

INTEREST PAID	
CLASS A	1.096.633,50 €
CLASS B	153.450,00 €
Interest accrued and unpaid	0,00 €

RESIDUAL LIFE (YEARS)		
	INITIAL	March 15, 2010
CLASS A	8,90	3,80
CLASS B	16,80	3,91

F.T.H.: BANESTO 4

QUARTERLY COLLATERAL REPORT

March 15, 2010

PRINCIPAL	
Previous Balance	524.952.114,77 €
Principal Amortised	17.805.654,48 €
Outstanding Balance	507.146.460,29 €
Number of Credit Rights	9.588
LTV	47,79%

INTEREST	
Interest received during relevant period	3.774.412,73 €
Interest accrued during relevant period	3.572.779,19 €

PRINCIPAL BALANCE IN ARREARS						
	UP to 30 DAYS	30 to 60 DAYS	60 to 90 DAYS	90 to 180 DAYS	180 to 365 DAYS	> 365 DAYS
Principal Balance in Arrears	97.149,65 €	29.035,69 €	9.917,55 €	5.935,99 €	361,61 €	0,00 €
Interest accrued on Credit Rights in Arrears	41.311,30 €	12.985,15 €	6.093,10 €	4.469,77 €	595,17 €	0,00 €
Outstanding Balance	17.509.973,09 €	3.852.011,26 €	1.390.252,80 €	1.183.500,07 €	189.854,21 €	708.427,32 €
Number of Credit Rights	307	72	23	18	2	25
% of Outstanding Balance	3,45 %	0,76 %	0,27 %	0,23 %	0,04 %	0,19 %

WRITE OFF	
Cumulative WRITE OFF as of previous balance	669.717,03 €
Difference in Actual Period	-56.058,31 €
Cumulative WRITE OFF up to date	613.658,72 €

F.T.H.: BANESTO 4

QUARTERLY COLLATERAL REPORT

March 15, 2010

CONTENTIOUS / JUDICIAL	
Last balance	347.616,11 €
Difference in Actual Period	360.811,21 €
Current balance	708.427,32 €

F.T.H.: BANESTO 4

QUARTERLY REPORT - ALLOCATION OF CASH

March 15, 2010

TOTAL CASH RECEIVED END OF PERIOD	21.777.451,61 €
CASH RECEIVED - PRINCIPAL	
Amortisation of Credit Rights	17.799.738,06 €
CASH RECEIVED - INTEREST	
Interest received from Credit Rights	3.774.412,73 €
Interest received under GIC	132.253,65 €
CONTENTIOUS	81.970,80 €
INCOMES/EXPENSES OF TRANSTORY PROPERTIES	0,00 €
RESERVE FUNDS	0,00 €
OTHERS	-10.923,63 €

TREASURY ACCOUNT STATEMENT	6.576.824,45 €
PRINCIPAL RESERVE FUND	
Previous Balance	5.249.521,15 €
Period utilization	178.056,55 €
Outstanding Balance	5.071.464,60 €
PRINCIPAL RESERVE FUND	
Previous Balance	1.518.714,09 €
Period utilization	13.354,24 €
Outstanding Balance	1.505.359,85 €
WITHHOLDING TAXES	0,00 €
ISSUE EXPENSES WITHHELD	0,00 €
OTHERS	0,00 €

TOTAL CASH PAID END OF PERIOD	21.777.451,61 €
Ordinary Expenses	6.349,56 €
SGFT Fee	32.360,06 €
Swap payment Class A	-1.096.690,59 €
Swap collection Class A	3.062.057,94 €
Interest paid to Bondholders Class A	1.096.633,50 €
Principal withholding Class A	17.805.708,00 €
Principal withholding Class B	0,00 €
Swap payment Class B	287.096,57 €
Swap collection Class B	-153.450,00 €
Interest paid to Bondholders Class B	153.450,00 €
Interest Subordinated Loan	48.242,69 €
Redemption Subordinated Loan	191.410,79 €
Fixed Fee	6.000,00 €
Variable Fee	529.693,88 €
Use of Principal and Secondary Reserve Fund	-191.410,79 €

F.T.H.: BANESTO 4

CREDIT ENHACEMENT AND SUBORDINATED LOAN

March 15, 2010

CREDIT ENHACEMENT		
CONCEPTS	INITIAL	March 15, 2010
SUBORDINATED ISSUE	3,00 %	8,87 %
PRINCIPAL RESERVE FUND	15.000.000,00 € (1,00 %)	5.071.464,60 € (1,00 %)
SECUNDARY RESERVE FUND	2.250.000,00 € (0,15 %)	1.505.359,85 € (0,30 %)
ADICIONAL MARGIN	0,65%	0,65%

SUBORDINATED LOANS		
CONCEPTS	INITIAL	March 15, 2010
SUBORDINATED LOAN A		
Total Outstanding Subordinated Loan	20.386.000,00 €	6.578.516,71 €
Interest Rate	3,100 %	2,050%

F.T.H.: BANESTO 4

TRIGGERS OF THE MODEL

March 15, 2010

RESERVE FUND's TRIGGERS

1. IF 1.A) IS HIGHER THAN 1.B) THERE IS NO REDEMPTION PRINCIPAL AND SECONDARY RESERVE FUND:	
1.A) MP'S IN ARREARS OVER 90 DAYS	2.081.781,60 €
1.B) 2,5% MP'S OUTSTANDING BALANCE	12.678.661,51 €

THIS LEVEL HAS NOT BEEN REACHED. NEVERTHELESS CLASS B HASN'T BEGUN THE REDEMPTION.

BOND's TRIGGERS

1. IF 1.A) IS HIGHER THAN 1.B) THERE IS NO REDEMPTION OF CLASS B:	
1.A) MP'S IN ARREARS OVER 90 DAYS	2.081.781,60 €
1.B) 7% MP'S OUTSTANDING BALANCE	35.500.252,22 €

THIS LEVEL HAS NOT BEEN REACHED, SO THE PRINCIPAL AND SECONDARY RESERVE FUND HAVE DECREASED.

F.T.H.: BANESTO 4

DEFINITIONS

March 15, 2010

DETERMINATION DATE Means the date in which the Gestora will carry out the necessary calculations, on behalf of the Fund, for the distribution of the available funds at this date, according with the Order of Priority of Payments.

All the information regarding the Assets (Outstanding Balance of the Credit Rights, arrears' tables, transitory properties, stratification tables, etc.) are referred to this mentioned date.

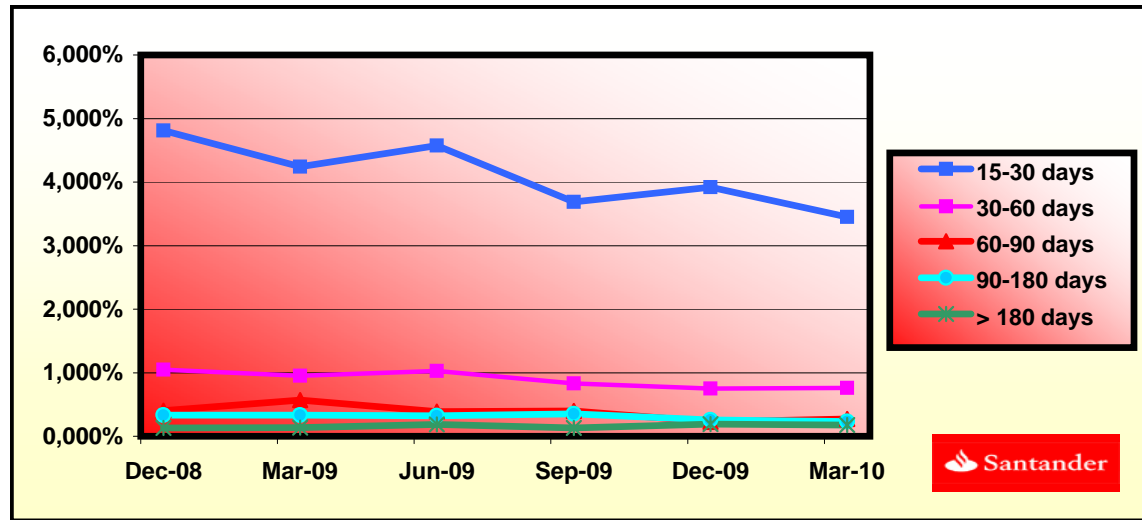
WRITE OFF Those loans that at a given date are unpaid for a period equal or higher to 12 or 18 months (according to Prospectus) of arrears in due payments.

CONTENTIOUS / JUDICIAL Loans in which the Originator will take legal actions. This amount is included in the bucket > 180 days in arrears.

FONDO DE TITULIZACIÓN HIPOTECARIA
BANESTO 4

HISTORICAL ARREARS REPORT
MARCH 15TH, 2010

Date	Dec-08	Mar-09	Jun-09	Sep-09	Dec-09	Mar-10
15-30 days	4,811%	4,244%	4,577%	3,686%	3,919%	3,453%
30-60 days	1,048%	0,953%	1,026%	0,833%	0,752%	0,760%
60-90 days	0,401%	0,571%	0,388%	0,397%	0,229%	0,274%
90-180 days	0,332%	0,334%	0,323%	0,354%	0,257%	0,233%
> 180 days	0,131%	0,136%	0,184%	0,132%	0,190%	0,177%



**FONDO DE TITULIZACIÓN HIPOTECARIA
BANESTO 4**

**LTV
MARCH 15TH, 2010**

LTV (%)	OUTS. BALANC	% OUTSTANDING	LOANS	% LOANS
0,00 - 9,99	7.766,58	1,52%	793	8,27%
10,00 - 19,99	22.922,00	4,50%	1.007	10,50%
20,00 - 29,99	49.084,19	9,65%	1.256	13,09%
30,00 - 39,99	71.204,38	14,00%	1.381	14,40%
40,00 - 49,99	92.485,61	18,19%	1.445	15,07%
50,00 - 59,99	124.401,74	24,47%	1.799	18,76%
60,00 - 69,99	139.644,20	27,47%	1.897	19,78%
70,00 - 79,99	406,41	0,07%	6	0,06%
>80	395,31	0,07%	4	0,04%

BANESTO 4

DATE	OUTSTANDING BEFORE PREPAYMENT	REAL OUTSTANDING	PREPAYMENT VECTOR	REMAINING AT THE END OF THE MONTH	AVERAGE SINGLE MONTHLY MORTALITY	CPR	MONTHLY SINGLE MONTHLY MORTALITY	CPR	OUTSTANDING AFTER PREPAYMENT
			1,08%					8,70%	
8-ene-04	1.500.000.000,0		100,00%	100,00%					1.500.000.000,00
8-feb-04	1.495.729.806,1	1.484.079.397,59	98,92%	99,22%	0,78%	8,96%	0,78%	8,96%	1.479.554.627,04
8-mar-04	1.491.447.086,3	1.467.151.720,99	97,85%	98,37%	0,82%	9,38%	0,86%	9,81%	1.459.363.778,27
8-abr-04	1.487.151.803,8	1.448.706.233,63	96,79%	97,41%	0,87%	9,95%	0,97%	11,06%	1.439.424.436,75
8-may-04	1.482.843.921,9	1.425.170.063,73	95,74%	96,11%	0,99%	11,22%	1,34%	14,93%	1.419.733.620,25
8-jun-04	1.478.523.403,5	1.407.660.576,34	94,71%	95,21%	0,98%	11,12%	0,94%	10,71%	1.400.288.380,87
8-jul-04	1.474.190.211,6	1.386.380.191,70	93,68%	94,04%	1,02%	11,56%	1,22%	13,72%	1.381.085.804,63
8-ago-04	1.469.844.309,0	1.362.533.521,59	92,67%	92,70%	1,08%	12,19%	1,43%	15,87%	1.362.123.011,13
8-sep-04	1.465.485.658,4	1.344.717.088,04	91,67%	91,76%	1,07%	12,10%	1,01%	11,51%	1.343.397.153,13
8-oct-04	1.461.114.222,4	1.335.244.439,02	90,68%	91,39%	1,00%	11,32%	0,41%	4,78%	1.324.905.416,20
8-nov-04	1.456.729.963,5	1.314.658.386,81	89,70%	90,25%	1,02%	11,59%	1,25%	13,96%	1.306.645.018,35
8-dic-04	1.452.332.844,2	1.295.869.428,02	88,73%	89,23%	1,03%	11,69%	1,13%	12,76%	1.288.613.209,64
8-ene-05	1.447.922.826,6	1.276.785.759,00	87,77%	88,18%	1,04%	11,82%	1,17%	13,20%	1.270.807.271,83
8-feb-05	1.443.499.873,0	1.249.470.515,43	86,82%	86,56%	1,10%	12,48%	1,84%	19,97%	1.253.224.518,03
8-mar-05	1.439.063.945,4	1.230.544.342,13	85,88%	85,51%	1,11%	12,56%	1,21%	13,60%	1.235.862.292,35
8-abr-05	1.434.615.005,7	1.212.858.606,52	84,95%	84,54%	1,11%	12,57%	1,13%	12,76%	1.218.717.969,52
8-may-05	1.430.153.015,9	1.189.310.534,68	84,03%	83,16%	1,15%	12,92%	1,64%	17,95%	1.201.788.954,57
8-jun-05	1.425.677.937,5	1.168.642.127,52	83,12%	81,97%	1,16%	13,09%	1,43%	15,87%	1.185.072.682,50
8-jul-05	1.421.189.732,2	1.147.357.322,96	82,22%	80,73%	1,18%	13,30%	1,51%	16,70%	1.168.566.617,88
8-ago-05	1.416.689.801,4	1.125.227.264,58	81,34%	79,43%	1,20%	13,54%	1,62%	17,77%	1.152.269.425,74
8-sep-05	1.412.176.870,8	1.104.796.032,79	80,46%	78,23%	1,22%	13,70%	1,50%	16,61%	1.136.177.435,80
8-oct-05	1.407.650.301,7	1.090.810.910,79	79,59%	77,49%	1,21%	13,56%	0,95%	10,81%	1.120.288.199,82
8-nov-05	1.403.110.655,3	1.071.533.241,87	78,73%	76,37%	1,22%	13,68%	1,45%	16,07%	1.104.599.297,82
8-dic-05	1.398.557.692,5	1.053.644.931,75	77,87%	75,34%	1,22%	13,74%	1,35%	15,04%	1.089.108.337,79
8-ene-06	1.393.991.374,4	1.036.110.993,49	77,03%	74,33%	1,23%	13,79%	1,34%	14,97%	1.073.812.955,40
8-feb-06	1.389.419.729,0	1.012.469.118,85	76,20%	72,87%	1,26%	14,09%	1,96%	21,15%	1.058.716.960,69
8-mar-06	1.384.834.673,4	996.130.174,83	75,37%	71,93%	1,26%	14,11%	1,29%	14,41%	1.043.811.781,50
8-abr-06	1.380.236.168,2	978.998.721,89	74,56%	70,93%	1,26%	14,16%	1,39%	15,49%	1.029.095.136,21
8-may-06	1.375.624.174,2	957.444.508,38	73,75%	69,60%	1,29%	14,39%	1,87%	20,31%	1.014.564.769,59
8-jun-06	1.370.998.651,6	935.849.620,04	72,96%	68,26%	1,31%	14,62%	1,93%	20,81%	1.000.218.452,52
8-jul-06	1.366.359.560,8	919.799.144,84	72,17%	67,32%	1,31%	14,64%	1,38%	15,37%	986.053.981,67
8-ago-06	1.361.716.074,1	902.616.654,99	71,39%	66,29%	1,32%	14,72%	1,53%	16,93%	972.075.755,35
8-sep-06	1.357.058.966,5	887.671.015,19	70,61%	65,41%	1,32%	14,72%	1,32%	14,72%	958.274.921,71
8-oct-06	1.352.388.198,0	877.497.210,61	69,85%	64,89%	1,30%	14,55%	0,80%	9,24%	944.649.354,84
8-nov-06	1.347.703.728,6	863.203.424,90	69,10%	64,05%	1,30%	14,55%	1,29%	14,40%	931.196.953,47
8-dic-06	1.343.005.518,1	849.769.844,98	68,35%	63,27%	1,30%	14,52%	1,21%	13,61%	917.915.640,67
8-ene-07	1.338.293.526,2	837.627.577,62	67,61%	62,59%	1,29%	14,46%	1,08%	12,24%	904.803.363,61
8-feb-07	1.333.579.740,2	821.156.807,85	66,88%	61,58%	1,30%	14,55%	1,62%	17,80%	891.866.137,11
8-mar-07	1.328.852.127,0	807.849.960,06	66,15%	60,79%	1,30%	14,54%	1,27%	14,22%	879.093.761,16
8-abr-07	1.324.110.646,2	797.164.189,97	65,44%	60,20%	1,29%	14,46%	0,97%	11,03%	866.484.255,66
8-may-07	1.319.355.257,1	784.899.478,92	64,73%	59,49%	1,29%	14,43%	1,18%	13,31%	854.035.663,46
8-jun-07	1.314.585.918,8	774.269.957,25	64,03%	58,90%	1,28%	14,35%	1,00%	11,32%	841.746.050,15
8-jul-07	1.309.802.590,5	761.413.798,53	63,34%	58,13%	1,28%	14,36%	1,30%	14,54%	829.613.503,77
8-ago-07	1.305.026.174,7	751.728.622,28	62,65%	57,60%	1,27%	14,27%	0,91%	10,40%	817.649.256,60
8-sep-07	1.300.235.748,2	739.057.358,43	61,98%	56,84%	1,28%	14,28%	1,32%	14,77%	805.838.073,05
8-oct-07	1.295.431.269,7	732.073.694,96	61,31%	56,51%	1,26%	14,12%	0,58%	6,71%	794.178.110,49
8-nov-07	1.290.612.698,1	723.311.440,76	60,64%	56,04%	1,25%	14,02%	0,83%	9,50%	782.667.547,69
8-dic-07	1.285.779.992,1	713.797.327,86	59,99%	55,51%	1,24%	13,95%	0,94%	10,76%	771.304.584,60
8-ene-08	1.280.933.110,0	703.726.928,14	59,34%	54,94%	1,24%	13,91%	1,04%	11,77%	760.087.442,09
8-feb-08	1.276.097.465,1	692.501.801,57	58,70%	54,27%	1,24%	13,90%	1,22%	13,72%	749.029.302,76
8-mar-08	1.271.247.635,6	682.597.529,30	58,06%	53,70%	1,24%	13,86%	1,05%	11,94%	738.113.207,78
8-abr-08	1.266.383.580,0	674.784.360,80	57,43%	53,28%	1,23%	13,77%	0,76%	8,80%	727.337.443,32
8-may-08	1.261.505.256,4	666.887.365,44	56,81%	52,86%	1,22%	13,68%	0,79%	9,06%	716.700.315,52
8-jun-08	1.256.612.623,1	657.598.455,52	56,20%	52,33%	1,21%	13,64%	1,01%	11,46%	706.200.150,22
8-jul-08	1.251.705.638,1	649.214.906,47	55,59%	51,87%	1,21%	13,57%	0,89%	10,15%	695.835.292,75
8-ago-08	1.246.802.962,2	640.879.249,01	54,99%	51,40%	1,20%	13,52%	0,90%	10,24%	685.614.392,42
8-sep-08	1.241.885.905,1	632.598.643,02	54,40%	50,94%	1,20%	13,46%	0,90%	10,29%	675.525.355,56
8-oct-08	1.236.954.424,7	628.100.742,93	53,81%	50,78%	1,18%	13,30%	0,32%	3,72%	665.566.587,38
8-nov-08	1.232.008.478,6	621.324.955,67	53,22%	50,43%	1,17%	13,21%	0,68%	7,88%	655.736.511,65
8-dic-08	1.227.048.024,3	612.860.763,31	52,65%	49,95%	1,17%	13,17%	0,96%	10,97%	646.033.570,55
8-ene-09	1.222.073.019,4	606.876.935,25	52,08%	49,66%	1,16%	13,06%	0,57%	6,67%	636.456.224,37
8-feb-09	1.217.102.929,6	597.493.961,35	51,52%	49,09%	1,16%	13,06%	1,14%	12,90%	627.013.001,53
8-mar-09	1.212.118.260,9	591.367.944,22	50,96%	48,79%	1,15%	12,97%	0,62%	7,17%	617.692.159,70
8-abr-09	1.207.118.970,4	585.142.273,37	50,41%	48,47%	1,14%	12,88%	0,64%	7,45%	608.492.215,13
8-may-09	1.202.105.015,4	577.748.914,69	49,86%	48,06%	1,14%	12,84%	0,85%	9,75%	599.411.701,36
8-jun-09	1.197.076.352,7	570.507.383,42	49,32%	47,66%	1,13%	12,79%	0,84%	9,61%	590.449.169,06
8-jul-09	1.192.032.939,4	563.639.568,08	48,79%	47,28%	1,13%	12,73%	0,79%	9,03%	581.603.185,82
8-ago-09	1.187.001.678,5	557.414.616,57	48,26%	46,96%	1,12%	12,66%	0,69%	7,92%	572.885.341,20
8-sep-09	1.181.955.659,2	548.775.204,77	47,74%	46,43%	1,12%	12,66%	1,13%	12,74%	564.280.987,26
8-oct-09	1.176.894.838,3	542.660.310,28	47,23%	46,11%	1,12%	12,60%	0,69%	7,96%	555.788.744,65
8-nov-09	1.171.819.172,3	537.877.932,71	46,71%	45,90%	1,11%	12,50%	0,45%	5,29%	547.407.250,15
8-dic-09	1.166.728.617,7	531.749.083,76	46,21%	45,58%	1,10%	12,44%	0,71%	8,17%	539.135.156,47
8-ene-10	1.161.623.130,8	524.952.114,77	45,71%	45,19%	1,10%	12,40%	0,84%	9,67%	530.971.132,06
8-feb-10	1.156.526.758,4	517.716.841,13	45,22%	44,76%	1,09%	12,38%	0,94%	10,75%	522.924.753,53
8-mar-10	1.151.415.436,6	511.047.936,00	44,73%	44,38%	1,09%	12,34%	0,85%	9,74%	514.983.623,76
8-abr-10	1.146.289.121,6	507.146.460,29	44,24%	44,24%	1,08%	12,23%	0,32%	3,77%	507.146.460,29

DEAL
 MEZZ. DECLINN
 MEZZ. STOPS DECLINN
 VIDA RESIDUAL DESDE

1.500.000.000
 10%
 1%
 8-mar-10

DATE	PRINCIPAL AVAILABLE	SENIOR NOTES	MEZZANIE NOTES	CLASS A PRINCIPAL	AVERAGE LIFE CLASS A	CLASS B PRINCIPAL	AVERAGE LIFE CLASS B
					3,80		3,91
8-ene-04	0	1.455.000.000	45.000.000	0	0	0	0
8-feb-04	1 0	1.455.000.000	45.000.000	0	0	0	0
8-mar-04	1 60.575.563	1.455.000.000	45.000.000	60.575.563	-132.721.059.071	0	0
8-abr-04	1 0	1.394.424.437	45.000.000	0	0	0	0
8-may-04	1 0	1.394.424.437	45.000.000	0	0	0	0
8-jun-04	1 58.338.632	1.394.424.437	45.000.000	58.338.632	-122.452.788.835	0	0
8-jul-04	1 0	1.336.085.805	45.000.000	0	0	0	0
8-ago-04	1 0	1.336.085.805	45.000.000	0	0	0	0
8-sep-04	1 56.180.388	1.336.085.805	45.000.000	56.180.388	-112.754.039.568	0	0
8-oct-04	1 0	1.279.905.416	45.000.000	0	0	0	0
8-nov-04	1 0	1.279.905.416	45.000.000	0	0	0	0
8-dic-04	1 54.098.144	1.279.905.416	45.000.000	54.098.144	-103.652.044.626	0	0
8-ene-05	1 0	1.225.807.272	45.000.000	0	0	0	0
8-feb-05	1 0	1.225.807.272	45.000.000	0	0	0	0
8-mar-05	1 52.089.302	1.225.807.272	45.000.000	52.089.302	-95.115.066.014	0	0
8-abr-05	1 0	1.173.717.970	45.000.000	0	0	0	0
8-may-05	1 0	1.173.717.970	45.000.000	0	0	0	0
8-jun-05	1 50.151.352	1.173.717.970	45.000.000	50.151.352	-86.962.443.750	0	0
8-jul-05	1 0	1.123.566.618	45.000.000	0	0	0	0
8-ago-05	1 0	1.123.566.618	45.000.000	0	0	0	0
8-sep-05	1 48.278.418	1.123.566.618	45.000.000	48.278.418	-79.273.162.443	0	0
8-oct-05	1 0	1.075.288.200	45.000.000	0	0	0	0
8-nov-05	1 0	1.075.288.200	45.000.000	0	0	0	0
8-dic-05	1 46.475.244	1.075.288.200	45.000.000	46.475.244	-72.083.104.103	0	0
8-ene-06	1 0	1.028.812.955	45.000.000	0	0	0	0
8-feb-06	1 0	1.028.812.955	45.000.000	0	0	0	0
8-mar-06	1 44.717.819	1.028.812.955	45.000.000	44.717.819	-65.332.733.831	0	0
8-abr-06	1 0	984.095.136	45.000.000	0	0	0	0
8-may-06	1 0	984.095.136	45.000.000	0	0	0	0
8-jun-06	1 43.041.155	984.095.136	45.000.000	43.041.155	-58.923.340.570	0	0
8-jul-06	1 0	941.053.982	45.000.000	0	0	0	0
8-ago-06	1 0	941.053.982	45.000.000	0	0	0	0
8-sep-06	1 41.404.627	941.053.982	45.000.000	41.404.627	-52.873.708.463	0	0
8-oct-06	1 0	899.649.355	45.000.000	0	0	0	0
8-nov-06	1 0	899.649.355	45.000.000	0	0	0	0
8-dic-06	1 39.845.991	899.649.355	45.000.000	39.845.991	-47.257.345.593	0	0
8-ene-07	1 0	859.803.364	45.000.000	0	0	0	0
8-feb-07	1 0	859.803.364	45.000.000	0	0	0	0
8-mar-07	1 38.319.108	859.803.364	45.000.000	38.319.108	-41.997.742.321	0	0
8-abr-07	1 0	821.484.256	45.000.000	0	0	0	0
8-may-07	1 0	821.484.256	45.000.000	0	0	0	0
8-jun-07	1 36.870.752	821.484.256	45.000.000	36.870.752	-37.018.234.891	0	0
8-jul-07	1 0	784.613.504	45.000.000	0	0	0	0
8-ago-07	1 0	784.613.504	45.000.000	0	0	0	0
8-sep-07	1 35.435.393	784.613.504	45.000.000	35.435.393	-32.317.078.673	0	0
8-oct-07	1 0	749.178.110	45.000.000	0	0	0	0
8-nov-07	1 0	749.178.110	45.000.000	0	0	0	0
8-dic-07	1 34.090.668	749.178.110	45.000.000	34.090.668	-27.988.438.756	0	0
8-ene-08	1 0	715.087.442	45.000.000	0	0	0	0
8-feb-08	1 0	715.087.442	45.000.000	0	0	0	0
8-mar-08	1 32.749.999	715.087.442	45.000.000	32.749.999	-23.907.499.101	0	0
8-abr-08	1 0	682.337.443	45.000.000	0	0	0	0
8-may-08	1 0	682.337.443	45.000.000	0	0	0	0
8-jun-08	1 31.502.151	682.337.443	45.000.000	31.502.151	-20.098.372.066	0	0
8-jul-08	1 0	650.835.293	45.000.000	0	0	0	0
8-ago-08	1 0	650.835.293	45.000.000	0	0	0	0
8-sep-08	1 30.268.705	650.835.293	45.000.000	30.268.705	-16.526.713.133	0	0
8-oct-08	1 0	620.566.587	45.000.000	0	0	0	0
8-nov-08	1 0	620.566.587	45.000.000	0	0	0	0
8-dic-08	1 29.110.363	620.566.587	45.000.000	29.110.363	-13.245.215.167	0	0
8-ene-09	1 0	591.456.224	45.000.000	0	0	0	0
8-feb-09	1 0	591.456.224	45.000.000	0	0	0	0
8-mar-09	1 27.964.009	591.456.224	45.000.000	27.964.009	-10.206.863.374	0	0
8-abr-09	1 0	563.492.215	45.000.000	0	0	0	0
8-may-09	1 0	563.492.215	45.000.000	0	0	0	0
8-jun-09	1 26.889.029	563.492.215	45.000.000	26.889.029	-7.340.705.002	0	0

DEAL
 MEZZ. DECLINN
 MEZZ. STOPS DECLINN
 VIDA RESIDUAL DESDE

1.500.000.000
 10%
 1%
 8-mar-10

DATE	PRINCIPAL AVAILABLE	SENIOR NOTES	MEZZANIE NOTES	CLASS A PRINCIPAL	AVERAGE LIFE CLASS A	CLASS B PRINCIPAL	AVERAGE LIFE CLASS B
8-jul-09	1 0	536.603.186	45.000.000	0	0	0	0
8-ago-09	1 0	536.603.186	45.000.000	0	0	0	0
8-sep-09	1 25.814.441	536.603.186	45.000.000	25.814.441	-4.672.413.851	0	0
8-oct-09	1 0	510.788.745	45.000.000	0	0	0	0
8-nov-09	1 0	510.788.745	45.000.000	0	0	0	0
8-dic-09	1 24.817.613	510.788.745	45.000.000	24.817.613	-2.233.585.133	0	0
8-ene-10	1 0	485.971.132	45.000.000	0	0	0	0
8-feb-10	1 0	485.971.132	45.000.000	0	0	0	0
8-mar-10	1 23.824.672	485.971.132	45.000.000	23.824.672	0	0	0
8-abr-10	1 0	462.146.460	45.000.000	0	0	0	0
8-may-10	1 0	462.146.460	45.000.000	0	0	0	0
8-jun-10	1 22.900.293	462.146.460	45.000.000	21.922.672	2.016.885.813	977.621	89.941.147
8-jul-10	1 0	440.223.788	44.022.379	0	0	0	0
8-ago-10	1 0	440.223.788	44.022.379	0	0	0	0
8-sep-10	1 21.961.235	440.223.788	44.022.379	19.964.760	3.673.515.749	1.996.476	367.351.575
8-oct-10	1 0	420.259.029	42.025.903	0	0	0	0
8-nov-10	1 0	420.259.029	42.025.903	0	0	0	0
8-dic-10	1 21.105.230	420.259.029	42.025.903	19.186.573	5.276.307.488	1.918.657	527.630.749
8-ene-11	1 0	401.072.456	40.107.246	0	0	0	0
8-feb-11	1 0	401.072.456	40.107.246	0	0	0	0
8-mar-11	1 20.226.416	401.072.456	40.107.246	18.387.651	6.711.492.668	1.838.765	671.149.267
8-abr-11	1 0	382.684.805	38.268.481	0	0	0	0
8-may-11	1 0	382.684.805	38.268.481	0	0	0	0
8-jun-11	1 19.434.392	382.684.805	38.268.481	17.667.629	8.074.106.652	1.766.763	807.410.665
8-jul-11	1 0	365.017.176	36.501.718	0	0	0	0
8-ago-11	1 0	365.017.176	36.501.718	0	0	0	0
8-sep-11	1 18.586.014	365.017.176	36.501.718	16.896.376	9.276.110.685	1.689.638	927.611.069
8-oct-11	1 0	348.120.799	34.812.080	0	0	0	0
8-nov-11	1 0	348.120.799	34.812.080	0	0	0	0
8-dic-11	1 17.855.292	348.120.799	34.812.080	16.232.084	10.388.533.637	1.623.208	1.038.853.364
8-ene-12	1 0	331.888.715	33.188.872	0	0	0	0
8-feb-12	1 0	331.888.715	33.188.872	0	0	0	0
8-mar-12	1 17.038.573	331.888.715	33.188.872	15.489.612	11.322.906.505	1.548.961	1.132.290.651
8-abr-12	1 0	316.399.103	31.639.910	0	0	0	0
8-may-12	1 0	316.399.103	31.639.910	0	0	0	0
8-jun-12	1 16.366.414	316.399.103	31.639.910	14.878.558	12.245.053.407	1.487.856	1.224.505.341
8-jul-12	1 0	301.520.545	30.152.054	0	0	0	0
8-ago-12	1 0	301.520.545	30.152.054	0	0	0	0
8-sep-12	1 15.617.408	301.520.545	30.152.054	14.197.643	12.990.843.549	1.419.764	1.299.084.355
8-oct-12	1 0	287.322.902	28.732.290	0	0	0	0
8-nov-12	1 0	287.322.902	28.732.290	0	0	0	0
8-dic-12	1 14.999.079	287.322.902	28.732.290	13.635.527	13.717.339.728	1.363.553	1.371.733.973
8-ene-13	1 0	273.687.375	27.368.738	0	0	0	0
8-feb-13	1 0	273.687.375	27.368.738	0	0	0	0
8-mar-13	1 14.310.571	273.687.375	27.368.738	13.009.610	14.258.532.115	1.300.961	1.425.853.212
8-abr-13	1 0	260.677.766	26.067.777	0	0	0	0
8-may-13	1 0	260.677.766	26.067.777	0	0	0	0
8-jun-13	1 13.741.819	260.677.766	26.067.777	12.492.563	14.841.164.718	1.249.256	1.484.116.472
8-jul-13	1 0	248.185.203	24.818.520	0	0	0	0
8-ago-13	1 0	248.185.203	24.818.520	0	0	0	0
8-sep-13	1 13.131.387	248.185.203	24.818.520	11.937.625	15.280.159.667	1.193.762	1.528.015.967
8-oct-13	1 0	236.247.578	23.624.758	0	0	0	0
8-nov-13	1 0	236.247.578	23.624.758	0	0	0	0
8-dic-13	1 12.607.048	236.247.578	23.624.758	11.460.952	15.712.965.748	1.146.095	1.571.296.575
8-ene-14	1 0	224.786.626	22.478.663	0	0	0	0
8-feb-14	1 0	224.786.626	22.478.663	0	0	0	0
8-mar-14	1 12.055.652	224.786.626	22.478.663	10.959.683	16.012.097.328	1.095.968	1.601.209.733
8-abr-14	1 0	213.826.942	21.382.694	0	0	0	0
8-may-14	1 0	213.826.942	21.382.694	0	0	0	0
8-jun-14	1 11.571.717	213.826.942	21.382.694	10.519.742	16.337.159.866	1.051.974	1.633.715.987
8-jul-14	1 0	203.307.200	20.330.720	0	0	0	0
8-ago-14	1 0	203.307.200	20.330.720	0	0	0	0
8-sep-14	1 11.070.254	203.307.200	20.330.720	10.063.867	16.555.061.812	1.006.387	1.655.506.181
8-oct-14	1 0	193.243.333	19.324.333	0	0	0	0
8-nov-14	1 0	193.243.333	19.324.333	0	0	0	0
8-dic-14	1 10.623.292	193.243.333	19.324.333	9.657.539	16.765.486.850	965.754	1.676.548.685
8-ene-15	1 0	183.585.794	18.358.579	0	0	0	0
8-feb-15	1 0	183.585.794	18.358.579	0	0	0	0
8-mar-15	1 10.150.963	183.585.794	18.358.579	9.228.148	16.850.598.263	922.815	1.685.059.826
8-abr-15	1 0	174.357.646	17.435.765	0	0	0	0
8-may-15	1 0	174.357.646	17.435.765	0	0	0	0
8-jun-15	1 9.738.758	174.357.646	17.435.765	8.853.416	16.980.851.893	885.342	1.698.085.189
8-jul-15	1 0	165.504.230	16.550.423	0	0	0	0
8-ago-15	1 0	165.504.230	16.550.423	0	0	0	0
8-sep-15	1 9.313.224	165.504.230	16.550.423	8.466.567	17.017.799.987	846.657	1.701.779.999
8-oct-15	1 0	157.037.663	15.703.766	0	0	0	0
8-nov-15	1 0	157.037.663	15.703.766	0	0	0	0
8-dic-15	1 8.932.601	157.037.663	15.703.766	8.228.834	17.288.781.067	703.766	1.478.612.962
8-ene-16	1 0	148.808.828	15.000.000	0	0	0	0
8-feb-16	1 0	148.808.828	15.000.000	0	0	0	0
8-mar-16	1 8.518.493	148.808.828	15.000.000	8.518.493	18.672.537.390	0	0
8-abr-16	1 0	140.290.335	15.000.000	0	0	0	0
8-may-16	1 0	140.290.335	15.000.000	0	0	0	0
8-jun-16	1 8.168.301	140.290.335	15.000.000	8.168.301	18.656.400.587	0	0
8-jul-16	1 0	132.122.034	15.000.000	0	0	0	0
8-ago-16	1 0	132.122.034	15.000.000	0	0	0	0
8-sep-16	1 147.122.034	132.122.034	15.000.000	132.122.034	313.921.951.881	15.000.000	35.640.000.000