



## **F.T.H. HIPOTEBANSA XI**

**FRANCISCO FORTES CLAVERO**

**ANALYST**

**SANTANDER DE TITULIZACION, S.G.F.T, S.A.**

**GRAN VIA DE HORTALEZA 3**

**28033 MADRID**

**[ffortes@gruposantander.com](mailto:ffortes@gruposantander.com)**

**Tel: 912893290**



NAME OF THE FUND:

F.T.H. HIPOTEBANSA XI

INFORMATION AT:

QUARTER/SEMESTER:

February 15, 2016 - May 17, 2016

YEAR:

2016

Acting on behalf of Santander de Titulización S.G.F.T., S.A. as General Manager:	Signature:
IGNACIO ORTEGA GAVARA - GENERAL MANAGER	

### I. DATA OF THE FUND

Constitution Date	November 26, 2002	Paying Agent	BANCO SANTANDER	
Disbursement Date	November 29, 2002	Negotiation Market	AIAF	
Final Date of Redemption	February 15, 2035	Ratings Agencies	MOODY'S ESPAÑA	
			STANDARD & POORS	
Management Company	SANTANDER DE TITULIZACION, S.G.F.T., S.A.	Rating	Initial	Current
Credit Rights 's Seller	BANCO SANTANDER	CLASS A	Aaa/AAA	Aa3/AA+
		CLASS B	A2/A	Ba1/B-

## II. SECURITIES ISSUED CHARGED TO THE FUND: SECURITISATION BONDS

CLASS PRIORITY ISIN CODE	NUM BONDS	NOMINAL			
			Initial	Current	%Act/In
CLASS A ES0338447008	10.408	Nominal per Bond	100.000,00	12.976,94	
		Total Nominal	1.040.800.000,00	135.063.991,52	12,98 %
CLASS B ES0338447016	212	Nominal per Bond	100.000,00	38.225,65	
		Total Nominal	21.200.000,00	8.103.837,80	38,23 %

REDEMPTION AND INTEREST OF THE BONDS					
Current			Next		
Payment Date of the Current Period May 17, 2016			Next Payment Date August 16, 2016		
	Redemption of the Bonds	Gross Interest	Interest Rate	Gross Interest Next Coupon	Net Interest Next Coupon
CLASS A	488,79 €	2,10 €	0,0000 %	0,00 €	0,00 €
CLASS B	4.617,22 €	29,67 €	0,1930 %	18,65 €	15,11 €
Accrued amortisation due not payed	0,00 €				
Scheduled Amortisation	NO				

**III. ASSET PURCHASED BY THE FUND: CREDIT RIGHTS**

CREDIT RIGHTS	ISSUE DATE	CURRENT DATE
Numbre of CR's	13.082	4.000
CR's Outstanding to be amortised	1.062.000.934,18	143.167.798,91
CR's Outstanding per Loan to be amortised	81.180,32	35.791,94
Interest Rate	4,46 %	0,98 %

PREPAYMENT RATE	CURRENT SITUATION
Monthly Single Rate	8,55 %
Average Monthly Single Rate	8,85 %
Constant Prepayment Rate from Constitution	8,77 %

CURRENT DELINQUENCY	Up to 1 month	From 1 to 6 months	Greater than 6 months
Debt Due (Principal + Interest)	10.275,32	23.982,51	0,00
Debt to be amortised	0,00	0,00	143.136.212,46
Total Debt	10.275,32	23.982,51	143.136.212,46

## F.T.H. HIPOTEBANSA XI

### QUARTERLY BONDS PAYOUT REPORT

May 17, 2016

BONDS. PRINCIPAL	
Previous Balance	149.234.006,28 €
Principal Amortised	6.066.176,96 €
Outstanding Balance	143.167.829,32 €
% of Initial Balance	13,48%
Principal accrued and unpaid	0,00 €

DATA	
Pool Cut-off Date	09/05/2016
Payment Date	17/05/2016
Last Payment Date	15/02/2016
Number of Days (Act/360)	92
Reference Interest Rate (%)	-0,257%
Next Payment Date	16/08/2016

INTEREST PAID	
CLASS A	21.856,80 €
CLASS B	6.290,04 €
Interest accrued and unpaid	0,00 €

RESIDUAL LIFE (YEARS)		
	INITIAL	17/05/2016
CLASS A	6,7	1,69
CLASS B	12,8	2

**F.T.H. HIPOTEBANSA XI****QUARTERLY COLLATERAL REPORT**

May 17, 2016

<b>PRINCIPAL</b>	
Previous Balance	149.234.013,87 €
Principal Amortised	6.066.214,96 €
Outstanding Balance	143.167.798,91 €
Number of Credit Rights	4.000
LTV	31,39%

<b>INTEREST</b>	
Interest received during relevant period	423.155,84 €
Interest accrued during relevant period	415.932,12 €

<b>PRINCIPAL BALANCE IN ARREARS</b>					
	<b>UP to 30 DAYS</b>	<b>30 to 60 DAYS</b>	<b>60 to 90 DAYS</b>	<b>90 to 180 DAYS</b>	<b>&gt; 180 DAYS</b>
Principal Balance in Arrears	9.462,14 €	6.355,23 €	13.655,65 €	2.113,43 €	0,00 €
Interest accrued on Credit Rights in Arrears	813,18 €	714,85 €	979,88 €	163,47 €	0,00 €
Outstanding Balance	2.110.721,80 €	554.553,89 €	343.032,88 €	28.382,33 €	1.153.267,69 €
Number of Credit Rights	45	13	10	2	29
% of Outstanding Balance	1,47%	0,39%	0,24%	0,02%	0,81%

**F.T.H. HIPOTEBANSA XI**

**QUARTERLY COLLATERAL REPORT**

**May 17, 2016**

<b>CONTENTIOUS / JUDICIAL</b>	
Last balance	1.558.735,27 €
Difference in Actual Period	-405.467,58 €
Current balance	1.153.267,69 €
Contentious CR's number	29

<b>TRANSITORY PROPERTIES</b>	
Last balance	1.293.241,39 €
Difference in Actual Period	-39.824,84 €
Current balance	1.253.416,55 €
Transitory properties CR's number	20

<b>NET LOSS</b>	
Last balance	261.392,03 €
Difference in Actual Period	248,70 €
Current balance	261.640,73 €

## F.T.H. HIPOTEBANSA XI

### QUARTERLY REPORT - ALLOCATION OF CASH

May 17, 2016

TOTAL CASH RECEIVED END OF PERIOD	6.836.099,55 €
<b>CASH RECEIVED - PRINCIPAL</b>	
Amortisation of Credit Rights	5.947.125,10 €
<b>CASH RECEIVED - INTEREST</b>	
Interest received from Credit Rights	423.155,84 €
Interest received under GIC	-5.133,35 €
<b>CONTENTIOUS</b>	15.195,10 €
<b>INCOMES/EXPENSES OF TRANSTORY PROPERTIES</b>	98.489,61 €
<b>RESERVE FUNDS</b>	357.767,25 €
<b>OTHERS</b>	-500,00 €

TREASURY ACCOUNT STATEMENT	4.444.597,49 €
<b>PRINCIPAL RESERVE FUND</b>	
Previous Balance	1.717.891,79 €
Period utilization	-286.213,80 €
Outstanding Balance	1.431.677,99 €
<b>PRINCIPAL RESERVE FUND</b>	
Previous Balance	3.084.472,95 €
Period utilization	-71.553,45 €
Outstanding Balance	3.012.919,50 €
<b>WITHHOLDING TAXES</b>	0,00 €
<b>ISSUE EXPENSES WITHHELD</b>	0,00 €
<b>OTHERS</b>	0,00 €

TOTAL CASH PAID END OF PERIOD	6.836.099,55 €
ORDINARY EXPENSES	6.475,63 €
MANAGEMENT FEE	19.110,00 €
SWAP A COLLECTION	-21.848,03 €
SWAP A PAYMENT	191.243,00 €
SWAP B COLLECTION	-6.290,27 €
SWAP B PAYMENT	12.393,75 €
CLASS A INTEREST	21.856,80 €
CLASS A REDEMPTION	5.087.326,32 €
CLASS B REDEMPTION	978.850,64 €
CLASS B INTEREST	6.290,04 €
SUBORDINATED LOAN A INTEREST	7.047,59 €
SUBORDINATED LOAN B INTEREST	0,00 €
SUBORDINATED LOAN A REDEMPTION	357.767,25 €
SUBORDINATED LOAN B REDEMPTION	0,00 €
ADMINISTRATION FEE	6.000,00 €
VARIABLE FEE	169.876,83 €



## F.T.H. HIPOTEBANSA XI

### CREDIT ENHANCEMENT AND SUBORDINATED LOAN

May 17, 2016

CREDIT ENHANCEMENT		
CONCEPTS	INITIAL	May 17, 2016
SUBORDINATED ISSUE	2,00 %	5,66%
PRINCIPAL RESERVE FUND	10.620.000,00 € (1,00 %)	1.431.677,99 € 1,00%
SECONDARY RESERVE FUND	5.310.000,00 € (0,50 %)	3.012.919,50 € 2,10%

SUBORDINATED LOANS		
CONCEPTS	INITIAL	May 17, 2016
SUBORDINATED LOAN A		
Total Outstanding Subordinated Loan	17.045.178,00 €	4.446.448,95 €
Interest Rate	3,860 %	0,381%

## F.T.H. HIPOTEBANSA XI

### TRIGGERS OF THE MODEL

May 17, 2016

RESERVE FUND's TRIGGERS	
IF 1) IS HIGHER THAN 2) RESERVE FUNDS WILL NOT BE REDUCED	
1) 99% PREVIOUS BTA BALANCE	147.741.666,21 €
2) CREDIT RIGHTS OUTSTANDING BALANCE (ARREARS < 90 DAYS) + CR'S REDEMPTION	147.933.273,99 €

RESERVE FUND HAS BEEN REDUCED

BOND's TRIGGERS	
IF 1) IS HIGHER THAN 2) CLASS B IS NOT AMORTISED	
1) CREDIT RIGHTS IN ARREARS OVER 90 DAYS	1.181.650,02 €
2) 4% CREDIT RIGHTS OUTSTANDING BALANCE	5.726.711,96 €

CLASS B IS AMORTIZED

AGREEMENT	COUNTERPARTY	RATING AGENCY	MINIMUM RATING REQUIRED	CURRENT RATING
CUENTA TESORERÍA	BANCO SANTANDER	MOODYS	P-1 c/p	A3 l/p P-2 c/p
		S&P	A-1 c/p A l/p	A- l/p A-2 c/p
SWAP	BANCO SANTANDER	MOODYS	A2 l/p P-1 c/p	A3 l/p P-2 c/p
		S&P	A l/p	A- l/p A-2 c/p

COUNTERPARTY DOES NOT HAVE THE MINIMUM RATING REQUIRED. TREASURY ACCOUNT HAS BEEN TRANSFERRED TO A COUNTERPARTY WITH MINIMUM RATING REQUIRED. SWAP DEPOSIT HAS BEEN DEPOSITED IN TREASURY ACCOUNT

## F.T.H. HIPOTEBANSA XI

### DEFINITIONS

May 17, 2016

**POOL CUT-OFF DATE** Means the date in which the Gestora will carry out the necessary calculations, on behalf of the Fund, for the distribution of the available funds at this date, according with the Order of Priority of Payments.  
All the information regarding the Assets (Outstanding Balance of the Credit Rights, arrears' tables, transitory properties, stratification tables, etc.) are referred to this mentioned date.

**NET LOSSES** Those loans which the Originator considers that will not recover (net of recoveries).

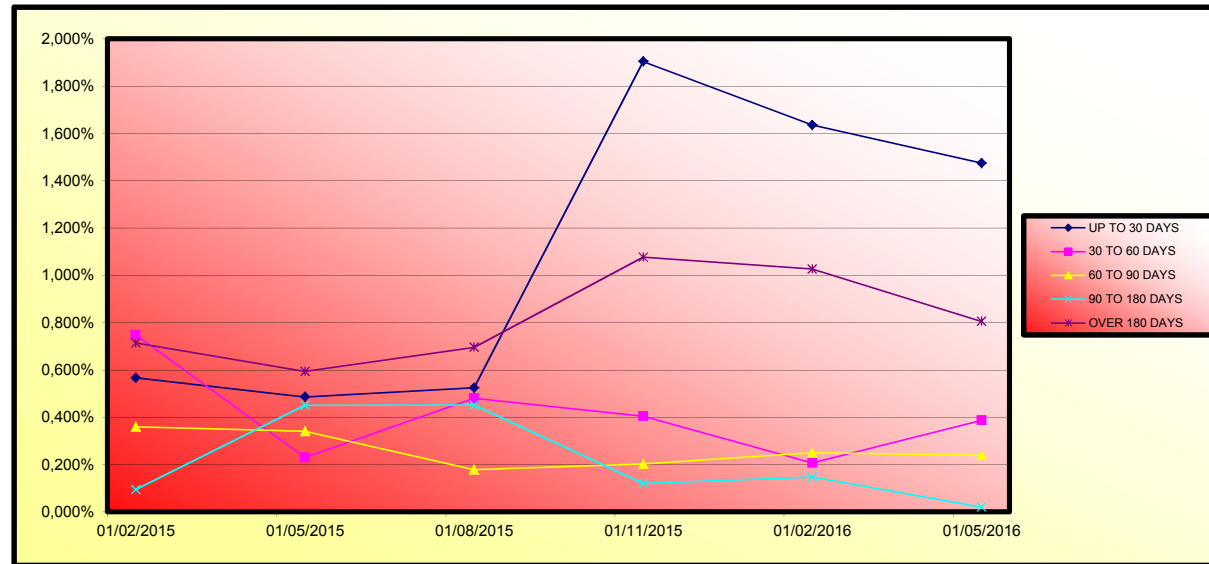
**TRANSITORY PROPERTIES** Those assets in the balance of the Fund as a consequence of a judicial or non-judicial process.

**CONTENTIOUS / JUDICIAL** Loans in which the Originator will take legal actions. This amount is included in the different buckets in arrears.

**FONDO DE TITULIZACIÓN DE ACTIVOS  
HIPOTEBANSA 11**

Report date: May 17th 2016

ARREARS PERFORMANCE						
	08/02/2015	08/05/2015	10/08/2015	06/11/2015	08/02/2016	09/05/2016
<b>UP TO 30 DAYS</b>	0,567%	0,486%	0,524%	1,904%	1,635%	1,474%
<b>30 TO 60 DAYS</b>	0,748%	0,230%	0,481%	0,405%	0,207%	0,387%
<b>60 TO 90 DAYS</b>	0,359%	0,341%	0,179%	0,203%	0,251%	0,240%
<b>90 TO 180 DAYS</b>	0,095%	0,450%	0,452%	0,121%	0,148%	0,020%
<b>OVER 180 DAYS</b>	0,714%	0,594%	0,696%	1,077%	1,027%	0,806%



**FONDO DE TITULIZACIÓN DE ACTIVOS  
HIPOTEBANSA 11**

LOAN TO VALUE

Report date: May 17th 2016

LTV				
	OUTS, BALANCE	% OUTSTANDING	NUMBER LOANS	% NUM LOANS
<b>0-9,99</b>	5.365.976,68 €	3,75%	843	21,08%
<b>10-19,99</b>	10.800.905,44 €	7,54%	463	11,58%
<b>20-29,99</b>	20.462.500,08 €	14,29%	602	15,05%
<b>30-39,99</b>	27.418.127,52 €	19,15%	704	17,60%
<b>40-49,99</b>	29.998.303,98 €	20,95%	586	14,65%
<b>50-59,99</b>	28.065.685,76 €	19,60%	475	11,88%
<b>60-69,99</b>	12.907.587,04 €	9,02%	204	5,10%
<b>70-79,99</b>	5.637.451,19 €	3,94%	88	2,20%
<b>80-89,99</b>	2.511.261,22 €	1,75%	35	0,88%

PREPAGOS - HIPOTEBANSA 11

17-may-16

Fecha	Balance Teórico	Balance Real	0,76% Vector Prepago	Tasa Prepago Mensual desde Inicio	Tasa Prepago Anualizada desde Inicio	Tasa Prepago Mensual	Tasa Prepago Mensual Anualizada	Outstanding after prepayment	Principal Available	
					8,85%				1.062.000.934,18	
1	1.062.000.934,18		100,00%	100,00%				1.062.000.934,18		
2	1-dic-02	1.059.170.325,97	1.057.044.700,19	99,24%	99,80%	0,20%	2,38%	0,20%	2,38%	1.057.044.700,2
3	1-ene-03	1.056.330.372,16	1.048.809.339,04	98,48%	99,29%	0,36%	4,20%	0,51%	5,98%	1.048.809.339,0
4	1-feb-03	1.053.479.859,47	1.037.938.978,94	97,73%	98,52%	0,49%	5,77%	0,77%	8,84%	1.037.938.978,9
5	1-mar-03	1.050.618.748,66	1.030.003.541,32	96,99%	98,04%	0,49%	5,77%	0,49%	5,77%	1.030.003.541,3
6	1-abr-03	1.047.747.000,34	1.020.972.745,34	96,25%	97,44%	0,52%	6,02%	0,61%	7,02%	1.020.972.745,3
7	1-may-03	1.044.864.574,97	1.010.816.263,76	95,51%	96,74%	0,55%	6,41%	0,72%	8,32%	1.010.816.263,8
8	1-jun-03	1.041.971.432,87	1.003.440.878,07	94,79%	96,30%	0,54%	6,26%	0,45%	5,31%	1.003.440.878,1
9	1-jul-03	1.039.067.682,10	993.186.004,40	94,06%	95,58%	0,56%	6,55%	0,75%	8,59%	993.186.004,4
10	1-ago-03	1.036.153.135,33	982.097.638,62	93,35%	94,78%	0,59%	6,89%	0,84%	9,61%	982.097.638,6
11	1-sep-03	1.033.227.752,45	975.159.555,45	92,64%	94,38%	0,58%	6,71%	0,43%	4,99%	975.159.555,5
12	1-oct-03	1.030.291.493,18	966.431.750,97	91,93%	93,80%	0,58%	6,74%	0,61%	7,11%	966.431.751,0
13	1-nov-03	1.027.344.317,10	953.436.130,22	91,23%	92,81%	0,62%	7,19%	1,06%	12,02%	953.436.130,2
14	1-dic-03	1.024.386.183,63	944.508.540,63	90,53%	92,20%	0,62%	7,22%	0,65%	7,53%	944.508.540,6
15	1-ene-04	1.021.417.800,39	930.185.073,01	89,84%	91,07%	0,67%	7,71%	1,23%	13,80%	930.185.073,0
16	1-feb-04	1.018.438.380,94	921.831.922,03	89,16%	90,51%	0,66%	7,66%	0,61%	7,06%	921.831.922,0
17	1-mar-04	1.015.447.884,27	907.539.469,11	88,48%	89,37%	0,70%	8,08%	1,26%	14,12%	907.539.469,1
18	1-abr-04	1.012.446.269,20	895.504.918,67	87,81%	88,45%	0,72%	8,30%	1,03%	11,72%	895.504.918,7
19	1-may-04	1.009.433.494,41	887.418.518,82	87,14%	87,91%	0,71%	8,23%	0,61%	7,05%	887.418.518,8
20	1-jun-04	1.006.409.518,43	876.263.237,75	86,47%	87,07%	0,73%	8,37%	0,96%	10,93%	876.263.237,8
21	1-jul-04	1.003.377.044,29	867.495.065,22	85,81%	86,46%	0,72%	8,36%	0,70%	8,10%	867.495.065,2
22	1-ago-04	1.000.333.295,73	857.633.882,55	85,16%	85,73%	0,73%	8,42%	0,84%	9,58%	857.633.882,6
23	1-sep-04	997.278.230,87	804.308.410,78	84,51%	80,65%	0,97%	11,07%	5,93%	51,98%	804.308.410,8
24	1-oct-04	994.211.807,63	795.545.591,13	83,87%	80,02%	0,96%	10,98%	0,78%	9,02%	795.545.591,1
25	1-nov-04	991.133.983,79	782.598.464,39	83,23%	78,96%	0,98%	11,14%	1,32%	14,76%	782.598.464,4
26	1-dic-04	988.044.717,00	770.977.781,30	82,59%	78,03%	0,99%	11,23%	1,18%	13,24%	770.977.781,3
27	1-ene-05	984.948.536,41	754.651.271,17	81,96%	76,62%	1,02%	11,57%	1,81%	19,68%	754.651.271,2
28	1-feb-05	981.840.844,62	742.323.934,82	81,34%	75,61%	1,03%	11,69%	1,32%	14,76%	742.323.934,8
29	1-mar-05	978.721.598,87	731.960.780,33	80,72%	74,79%	1,03%	11,71%	1,08%	12,24%	731.960.780,3
30	1-abr-05	975.590.756,20	718.984.542,85	80,10%	73,70%	1,05%	11,86%	1,46%	16,15%	718.984.542,9
31	1-may-05	972.448.273,51	706.885.021,02	79,49%	72,69%	1,06%	11,98%	1,37%	15,21%	706.885.021,0
32	1-jun-05	969.294.107,55	689.240.977,47	78,89%	71,11%	1,09%	12,37%	2,18%	23,23%	689.240.977,5
33	1-jul-05	966.131.551,58	678.185.756,46	78,29%	70,20%	1,10%	12,43%	1,28%	14,34%	678.185.756,5
34	1-ago-05	962.957.237,72	666.214.919,67	77,69%	69,18%	1,11%	12,54%	1,44%	15,99%	666.214.919,7
35	1-sep-05	959.771.122,28	658.165.638,87	77,10%	68,58%	1,10%	12,47%	0,88%	10,07%	658.165.638,9
36	1-oct-05	956.573.161,40	648.651.369,26	76,51%	67,81%	1,10%	12,47%	1,12%	12,60%	648.651.369,3
37	1-nov-05	953.363.311,04	638.242.081,65	75,93%	66,95%	1,11%	12,52%	1,27%	14,26%	638.242.081,7
38	1-dic-05	950.141.527,02	627.954.600,79	75,35%	66,09%	1,11%	12,57%	1,28%	14,31%	627.954.600,8
39	1-ene-06	946.909.556,71	616.446.413,36	74,78%	65,10%	1,12%	12,68%	1,50%	16,56%	616.446.413,4
40	1-feb-06	943.665.570,52	605.695.422,90	74,21%	64,19%	1,13%	12,75%	1,41%	15,63%	605.695.422,9
41	1-mar-06	940.409.523,79	594.529.487,85	73,64%	63,22%	1,14%	12,85%	1,50%	16,62%	594.529.487,9
42	1-abr-06	937.141.371,71	584.960.675,74	73,08%	62,42%	1,14%	12,88%	1,27%	14,18%	584.960.675,7
43	1-may-06	933.861.069,29	575.086.536,35	72,52%	61,58%	1,15%	12,94%	1,34%	14,97%	575.086.536,4
44	1-jun-06	930.568.571,35	565.932.803,00	71,97%	60,82%	1,15%	12,96%	1,24%	13,94%	565.932.803,0
45	1-jul-06	927.272.799,87	558.118.316,87	71,42%	60,19%	1,15%	12,93%	1,03%	11,69%	558.118.316,9
46	1-ago-06	923.964.775,39	550.497.713,95	70,88%	59,58%	1,14%	12,90%	1,01%	11,49%	550.497.714,0
47	1-sep-06	920.644.452,37	542.920.794,56	70,34%	58,97%	1,14%	12,87%	1,02%	11,58%	542.920.794,6
48	1-oct-06	917.311.785,10	536.549.647,93	69,80%	58,49%	1,13%	12,80%	0,81%	9,35%	536.549.647,9
49	1-nov-06	913.966.727,70	529.463.736,52	69,27%	57,93%	1,13%	12,76%	0,96%	10,93%	529.463.736,5
50	1-dic-06	910.609.234,12	520.643.753,84	68,74%	57,18%	1,13%	12,80%	1,30%	14,57%	520.643.753,8
51	1-ene-07	907.242.586,08	512.492.911,52	68,22%	56,49%	1,14%	12,81%	1,20%	13,49%	512.492.911,5
52	1-feb-07	903.863.421,61	505.142.636,37	67,70%	55,89%	1,13%	12,79%	1,07%	12,07%	505.142.636,4
53	1-mar-07	900.471.694,20	498.780.135,48	67,18%	55,39%	1,13%	12,74%	0,89%	10,15%	498.780.135,5
54	1-abr-07	897.067.357,15	490.788.190,07	66,67%	54,71%	1,13%	12,76%	1,23%	13,79%	490.788.190,1
55	1-may-07	893.650.363,60	485.583.354,72	66,16%	54,34%	1,12%	12,68%	0,68%	7,89%	485.583.354,7
56	1-jun-07	890.220.666,50	479.137.057,63	65,66%	53,82%	1,12%	12,64%	0,95%	10,79%	479.137.057,6
57	1-jul-07	886.836.366,45	471.982.288,71	65,16%	53,22%	1,12%	12,64%	1,12%	12,61%	471.982.288,7
58	1-ago-07	883.439.484,37	465.857.195,81	64,66%	52,73%	1,12%	12,60%	0,92%	10,48%	465.857.195,8
59	1-sep-07	880.029.973,50	461.998.838,58	64,17%	52,50%	1,10%	12,48%	0,44%	5,20%	461.998.838,6
60	1-oct-07	876.607.786,89	458.046.611,10	63,68%	52,25%	1,09%	12,37%	0,47%	5,48%	458.046.611,1
61	1-nov-07	873.172.877,43	452.371.234,64	63,19%	51,81%	1,09%	12,32%	0,85%	9,74%	452.371.234,6
62	1-dic-07	869.725.197,85	448.356.935,35	62,71%	51,55%	1,08%	12,22%	0,49%	5,78%	448.356.935,4
63	1-ene-08	866.268.177,14	439.408.095,80	62,23%	50,72%	1,09%	12,31%	1,60%	17,65%	439.408.095,8
64	1-feb-08	862.798.304,13	432.865.132,35	61,76%	50,17%	1,09%	12,31%	1,09%	12,35%	432.865.132,4
65	1-mar-08	859.315.531,03	428.713.233,91	61,29%	49,89%	1,08%	12,22%	0,56%	6,49%	428.713.233,9
66	1-abr-08	855.819.809,91	423.809.725,84	60,82%	49,52%	1,08%	12,17%	0,74%	8,53%	423.809.725,8
67	1-may-08	852.311.092,64	417.767.295,59	60,36%	49,02%	1,07%	12,16%	1,02%	11,58%	417.767.295,6
68	1-jun-08	848.789.330,93	414.119.779,42	59,90%	48,79%	1,07%	12,06%	0,46%	5,40%	414.119.779,4
69	1-jul-08	845.278.456,53	408.387.262,86	59,44%	48,31%	1,06%	12,05%	0,97%	11,09%	408.387.262,9
70	1-ago-08	841.754.529,66	399.894.858,15	58,99%	47,51%	1,07%	12,14%	1,67%	18,29%	399.894.858,2
71	1-sep-08	838.217.501,81	397.104.484,05	58,54%	47,37%	1,06%	12,02%	0,28%	3,29%	397.104.484,1
72	1-oct-08	834.667.324,30	392.635.300,03	58,09%	47,04%	1,06%	11,97%	0,70%	8,14%	392.635.300,0
73	1-nov-08	831.103.948,24	388.690.866,11	57,65%	46,77%	1,05%	11,90%	0,58%	6,74%	388.690.866,1
74	1-dic-08	827.527.324,58	385.413.737,73	57,21%	46,57%	1,04%	11,80%	0,41%	4,86%	385.413.737,7
75	1-ene-09	823.941.709,31	379.887.693,57	56,78%	46,11%	1,04%	11,80%	1,00%	11,41%	379.887.693,6
76	1-feb-09	820.342.763,79	376.132.280,53	56,34%	45,85%	1,03%	11,73%	0,55%	6,45%	376.132.280,5
77	1-mar-09	816.730.438,47	373.184.766,62	55,91%	45,69%	1,03%	11,63%	0,34%	4,06%	373.184.766,6
78	1-abr-09	813.104.683,62	370.712.910,40	55,49%	45,59%	1,01%	11,52%	0,22%	2,60%	370.712.910,4
79	1-may-09	809.465.449,34	366.289.849,16	55,06%	45,25%	1,01%	11,48%	0,75%	8,63%	366.289.849,2
80	1-jun-09	805.812.685,52	362.559.930,03	54,65%	44,99%	1,01%	11,42%	0,57%	6,63%	362.559.930,0
81	1-jul-09	802.186.527,76	357.724.978,07	54,23%	44,59%	1,00%				

87	1-ene-10	780.152.853,81	331.682.915,73	51,80%	42,52%	0,99%	11,25%	1,19%	13,39%	331.682.915,7	
88	1-feb-10	776.439.433,47	328.381.940,19	51,40%	42,29%	0,98%	11,19%	0,52%	6,08%	328.381.940,2	12.584.982,31
89	1-mar-10	772.712.207,86	324.299.710,78	51,01%	41,97%	0,98%	11,17%	0,77%	8,82%	324.299.710,8	
90	1-abr-10	768.971.125,68	320.856.666,58	50,62%	41,73%	0,98%	11,12%	0,58%	6,75%	320.856.666,6	
91	1-may-10	765.216.135,42	317.821.724,68	50,24%	41,53%	0,97%	11,06%	0,46%	5,38%	317.821.724,7	10.560.215,51
92	1-jun-10	761.447.185,41	315.309.819,68	49,85%	41,41%	0,96%	10,98%	0,30%	3,63%	315.309.819,7	
93	1-jul-10	757.737.575,21	312.506.764,97	49,47%	41,24%	0,96%	10,91%	0,40%	4,74%	312.506.765,0	
94	1-ago-10	754.014.173,91	307.861.260,43	49,10%	40,83%	0,96%	10,92%	1,00%	11,36%	307.861.260,4	9.960.464,25
95	1-sep-10	750.276.930,25	305.310.872,01	48,72%	40,69%	0,95%	10,84%	0,33%	3,94%	305.310.872,0	
96	1-oct-10	746.525.792,79	302.266.230,38	48,35%	40,49%	0,95%	10,79%	0,50%	5,83%	302.266.230,4	
97	1-nov-10	742.760.709,88	299.713.677,26	47,98%	40,35%	0,94%	10,72%	0,34%	4,03%	299.713.677,3	8.147.583,17
98	1-dic-10	738.981.629,70	296.591.158,42	47,62%	40,14%	0,94%	10,68%	0,54%	6,24%	296.591.158,4	
99	1-ene-11	735.193.927,19	291.262.819,72	47,25%	39,62%	0,94%	10,72%	1,29%	14,43%	291.262.819,7	
100	1-feb-11	731.392.143,34	288.900.230,44	46,89%	39,50%	0,93%	10,65%	0,30%	3,49%	288.900.230,4	10.813.446,82
101	1-mar-11	727.576.225,80	286.264.570,10	46,54%	39,34%	0,93%	10,59%	0,39%	4,61%	286.264.570,1	
102	1-abr-11	723.746.122,06	283.436.064,18	46,18%	39,16%	0,92%	10,54%	0,46%	5,43%	283.436.064,2	
103	1-may-11	719.901.779,38	280.960.059,59	45,83%	39,03%	0,92%	10,48%	0,34%	4,05%	280.960.059,6	7.940.170,85
104	1-jun-11	716.043.144,85	278.312.314,21	45,48%	38,87%	0,91%	10,43%	0,41%	4,79%	278.312.314,2	
105	1-jul-11	712.190.655,82	275.761.660,14	45,13%	38,72%	0,91%	10,37%	0,38%	4,47%	275.761.660,1	
106	1-ago-11	708.323.844,65	273.279.092,90	44,79%	38,58%	0,90%	10,31%	0,36%	4,23%	273.279.092,9	7.680.966,69
107	1-sep-11	704.442.658,13	270.935.369,97	44,45%	38,46%	0,90%	10,25%	0,31%	3,67%	270.935.370,0	
108	1-oct-11	700.547.042,80	268.556.921,92	44,11%	38,34%	0,89%	10,19%	0,33%	3,85%	268.556.921,9	
109	1-nov-11	696.636.945,06	266.425.568,69	43,77%	38,24%	0,89%	10,13%	0,24%	2,80%	266.425.568,7	6.853.524,21
110	1-dic-11	692.712.311,08	263.629.031,32	43,44%	38,06%	0,88%	10,09%	0,49%	5,71%	263.629.031,3	
111	1-ene-12	688.784.629,71	259.676.451,07	43,11%	37,70%	0,88%	10,10%	0,94%	10,69%	259.676.451,1	
112	1-feb-12	684.842.346,75	256.892.369,56	42,78%	37,51%	0,88%	10,06%	0,50%	5,87%	256.892.369,6	9.533.199,13
113	1-mar-12	680.885.407,92	253.949.065,00	42,45%	37,30%	0,88%	10,03%	0,57%	6,64%	253.949.065,0	
114	1-abr-12	676.913.758,75	251.104.281,26	42,13%	37,10%	0,87%	10,00%	0,54%	6,29%	251.104.281,3	
115	1-may-12	672.927.344,57	247.859.348,30	41,81%	36,83%	0,87%	9,98%	0,71%	8,17%	247.859.348,3	9.033.021,26
116	1-jun-12	668.926.110,50	244.993.940,46	41,49%	36,62%	0,87%	9,95%	0,56%	6,57%	244.993.940,5	
117	1-jul-12	665.347.651,79	242.336.402,87	41,17%	36,42%	0,87%	9,92%	0,55%	6,43%	242.336.402,9	
118	1-ago-12	661.755.889,43	239.852.008,79	40,86%	36,24%	0,86%	9,89%	0,49%	5,70%	239.852.008,8	8.007.339,51
119	1-sep-12	658.150.773,97	237.561.527,78	40,55%	36,10%	0,86%	9,84%	0,41%	4,84%	237.561.527,8	
120	1-oct-12	654.532.255,78	235.276.281,90	40,24%	35,95%	0,86%	9,80%	0,41%	4,86%	235.276.281,9	
121	1-nov-12	650.900.285,05	232.665.500,60	39,93%	35,75%	0,85%	9,78%	0,56%	6,49%	232.665.500,6	7.186.508,19
122	1-dic-12	647.254.811,77	229.563.429,83	39,63%	35,47%	0,85%	9,77%	0,78%	8,94%	229.563.429,8	
123	1-ene-13	643.606.678,16	226.412.789,50	39,33%	35,18%	0,85%	9,77%	0,81%	9,34%	226.412.789,5	
124	1-feb-13	639.944.981,93	224.148.004,03	39,03%	35,03%	0,85%	9,73%	0,43%	5,08%	224.148.004,0	8.517.496,57
125	1-mar-13	636.269.672,68	221.948.739,67	38,73%	34,88%	0,85%	9,69%	0,41%	4,80%	221.948.739,7	
126	1-abr-13	632.580.699,82	219.391.546,83	38,44%	34,68%	0,84%	9,67%	0,58%	6,69%	219.391.546,8	
127	1-may-13	628.878.012,55	217.174.140,11	38,14%	34,53%	0,84%	9,63%	0,43%	5,02%	217.174.140,1	6.973.863,92
128	1-jun-13	625.161.559,92	215.049.584,48	37,85%	34,40%	0,84%	9,59%	0,39%	4,58%	215.049.584,5	
129	1-jul-13	621.456.630,52	212.809.646,44	37,56%	34,24%	0,83%	9,56%	0,45%	5,29%	212.809.646,4	
130	1-ago-13	617.737.927,43	210.659.136,59	37,28%	34,10%	0,83%	9,52%	0,41%	4,86%	210.659.136,6	6.515.003,52
131	1-sep-13	614.005.399,43	208.912.559,65	36,99%	34,02%	0,83%	9,47%	0,23%	2,68%	208.912.559,7	
132	1-oct-13	610.258.995,15	206.556.591,52	36,71%	33,85%	0,82%	9,45%	0,52%	6,07%	206.556.591,5	
133	1-nov-13	606.498.663,03	204.578.485,37	36,43%	33,73%	0,82%	9,41%	0,34%	4,05%	204.578.485,4	6.080.651,22
134	1-dic-13	602.724.351,28	202.437.830,58	36,15%	33,59%	0,82%	9,37%	0,43%	5,00%	202.437.830,6	
135	1-ene-14	598.945.359,53	199.455.990,35	35,88%	33,30%	0,82%	9,38%	0,85%	9,75%	199.455.990,4	
136	1-feb-14	595.152.318,81	197.425.214,43	35,61%	33,17%	0,81%	9,34%	0,39%	4,55%	197.425.214,4	7.153.270,94
137	1-mar-14	591.345.176,91	194.082.513,37	35,33%	32,82%	0,82%	9,36%	1,06%	12,01%	194.082.513,4	
138	1-abr-14	587.523.881,41	191.766.394,14	35,06%	32,64%	0,81%	9,34%	0,55%	6,41%	191.766.394,1	
139	1-may-14	583.688.379,71	189.955.295,88	34,80%	32,54%	0,81%	9,30%	0,29%	3,47%	189.955.295,9	7.469.918,55
140	1-jun-14	579.838.619,01	187.970.954,96	34,53%	32,42%	0,81%	9,27%	0,39%	4,55%	187.970.955,0	
141	1-jul-14	576.249.599,09	184.376.022,73	34,27%	32,00%	0,81%	9,31%	1,30%	14,55%	184.376.022,7	
142	1-ago-14	572.647.236,25	183.915.580,70	34,01%	32,12%	0,80%	9,21%	-0,38%	-4,63%	183.915.580,7	6.039.715,18
143	1-sep-14	569.031.480,92	182.088.534,10	33,75%	32,00%	0,80%	9,18%	0,36%	4,29%	182.088.534,1	
144	1-oct-14	565.402.283,32	179.967.990,52	33,49%	31,83%	0,80%	9,16%	0,53%	6,18%	179.967.990,5	
145	1-nov-14	561.759.593,48	178.166.408,27	33,24%	31,72%	0,79%	9,13%	0,36%	4,23%	178.166.408,3	5.749.172,43
146	1-dic-14	558.103.361,25	176.557.932,40	32,98%	31,64%	0,79%	9,09%	0,25%	3,00%	176.557.932,4	
147	1-ene-15	554.443.005,38	173.697.923,48	32,73%	31,33%	0,79%	9,10%	0,97%	11,04%	173.697.923,5	
148	1-feb-15	550.769.041,47	171.789.178,86	32,48%	31,19%	0,79%	9,07%	0,44%	5,14%	171.789.178,9	6.377.229,41
149	1-mar-15	547.081.418,95	169.802.765,32	32,23%	31,04%	0,79%	9,05%	0,49%	5,72%	169.802.765,3	
150	1-abr-15	543.380.087,04	166.653.950,29	31,99%	30,67%	0,79%	9,08%	1,19%	13,34%	166.653.950,3	
151	1-may-15	539.664.994,80	165.935.890,49	31,75%	30,75%	0,78%	9,00%	-0,25%	-3,10%	165.935.890,5	5.853.288,37
152	1-jun-15	535.936.091,09	164.426.688,35	31,50%	30,68%	0,78%	8,96%	0,22%	2,61%	164.426.688,4	
153	1-jul-15	532.220.881,90	162.349.402,67	31,26%	30,50%	0,78%	8,95%	0,57%	6,68%	162.349.402,7	
154	1-ago-15	528.491.860,80	160.460.837,80	31,03%	30,36%	0,78%	8,93%	0,47%	5,45%	160.460.837,8	5.475.052,69
155	1-sep-15	524.748.976,46	158.901.916,90	30,79%	30,28%	0,77%	8,89%	0,27%	3,14%	158.901.916,9	
156	1-oct-15	520.992.177,34	157.141.696,30	30,55%	30,16%	0,77%	8,86%	0,39%	4,63%	157.141.696,3	
157	1-nov-15	517.221.411,74	155.577.319,97	30,32%	30,08%	0,77%	8,83%	0,27%	3,24%	155.577.320,0	4.883.517,83
158	1-dic-15	513.436.627,75	153.657.092,53	30,09%	29,93%	0,77%	8,81%	0,51%	5,91%	153.657.092,5	
159	1-ene-16	509.646.529,91	151.177.382,56	29,86%	29,66%	0,77%	8,82%	0,88%	10,09%	151.177.382,6	
160	1-feb-16	505.842.341,83	149.234.013,87	29,63%	29,50%	0,76%	8,80%	0,54%	6,33%	149.234.013,9	6.343.306,10
161	1-mar-16	502.024.011,13	147.321.328,49	29,41%	29,35%	0,76%	8,79%	0,53%	6,19%	147.321.328,5	
162	1-abr-16	498.191.485,25	145.360.399,57	29,18%	29,18%	0,76%	8,77%	0,57%	6,65%	145.360.399,6	
163	1-may-16	494.344.711,43	143.167.798,91	28,96%	28,96%	0,76%	8,77%	0,74%	8,55%	143.167.798,9	6.066.214,96

1.062.000.000,00  
6,00%  
0,75%  
15-may-16

69285,54

VIDA RESIDUAL DESDE

1,69

2,00

FECHA	Principal disponible para la amortización	SERIE A				SERIE B	
		SERIE A	SERIE B	PRINCIPAL	VIDA MEDIA	PRINCIPAL	VIDA MEDIA
15-dic-02	0,00	1.040.800.000,00	21.200.000,00	0,00	0,00	0,00	0,00
15-ene-03	0,00	1.040.800.000,00	21.200.000,00	0,00	0,00	0,00	0,00
15-feb-03	24.061.955,24	1.040.800.000,00	21.200.000,00	24.061.955,24	-116.411.739.451,12	0,00	0,00
15-mar-03	0,00	1.016.738.044,76	21.200.000,00	0,00	0,00	0,00	0,00
15-abr-03	0,00	1.016.738.044,76	21.200.000,00	0,00	0,00	0,00	0,00
15-may-03	27.122.715,18	1.016.738.044,76	21.200.000,00	27.122.715,18	-128.805.774.389,82	0,00	0,00
15-jun-03	0,00	989.615.329,58	21.200.000,00	0,00	0,00	0,00	0,00
15-jul-03	0,00	989.615.329,58	21.200.000,00	0,00	0,00	0,00	0,00
15-ago-03	28.718.625,14	989.615.329,58	21.200.000,00	28.718.625,14	-133.742.637.276,98	0,00	0,00
15-sep-03	0,00	960.896.704,44	21.200.000,00	0,00	0,00	0,00	0,00
15-oct-03	0,00	960.896.704,44	21.200.000,00	0,00	0,00	0,00	0,00
15-nov-03	28.661.508,40	960.896.704,44	21.200.000,00	28.661.508,40	-130.839.785.846,00	0,00	0,00
15-dic-03	0,00	932.235.196,04	21.200.000,00	0,00	0,00	0,00	0,00
15-ene-04	0,00	932.235.196,04	21.200.000,00	0,00	0,00	0,00	0,00
15-feb-04	31.604.208,19	932.235.196,04	21.200.000,00	31.604.208,19	-141.365.623.233,87	0,00	0,00
15-mar-04	0,00	900.630.987,85	21.200.000,00	0,00	0,00	0,00	0,00
15-abr-04	0,00	900.630.987,85	21.200.000,00	0,00	0,00	0,00	0,00
15-may-04	34.413.403,21	900.630.987,85	21.200.000,00	34.413.403,21	-150.833.946.269,43	0,00	0,00
15-jun-04	0,00	866.217.584,64	21.200.000,00	0,00	0,00	0,00	0,00
15-jul-04	0,00	866.217.584,64	21.200.000,00	0,00	0,00	0,00	0,00
15-ago-04	29.784.636,27	866.217.584,64	21.200.000,00	29.784.636,27	-127.805.874.234,57	0,00	0,00
15-sep-04	0,00	836.432.948,37	21.200.000,00	0,00	0,00	0,00	0,00
15-oct-04	0,00	836.432.948,37	21.200.000,00	0,00	0,00	0,00	0,00
15-nov-04	75.035.418,16	836.432.948,37	21.200.000,00	75.035.418,16	-315.073.720.853,84	0,00	0,00
15-dic-04	0,00	761.397.530,21	21.200.000,00	0,00	0,00	0,00	0,00
15-ene-05	0,00	761.397.530,21	21.200.000,00	0,00	0,00	0,00	0,00
15-feb-05	40.274.529,57	761.397.530,21	21.200.000,00	40.274.529,57	-165.407.492.943,99	0,00	0,00
15-mar-05	0,00	721.123.000,64	21.200.000,00	0,00	0,00	0,00	0,00
15-abr-05	0,00	721.123.000,64	21.200.000,00	0,00	0,00	0,00	0,00
15-may-05	35.438.913,80	721.123.000,64	21.200.000,00	35.438.913,80	-142.393.555.648,40	0,00	0,00
15-jun-05	0,00	685.684.086,84	21.200.000,00	0,00	0,00	0,00	0,00
15-jul-05	0,00	685.684.086,84	21.200.000,00	0,00	0,00	0,00	0,00
15-ago-05	40.670.101,35	685.684.086,84	21.200.000,00	40.670.101,35	-159.670.817.900,10	0,00	0,00
15-sep-05	0,00	645.013.985,49	21.200.000,00	0,00	0,00	0,00	0,00
15-oct-05	0,00	645.013.985,49	21.200.000,00	0,00	0,00	0,00	0,00
15-nov-05	27.972.838,02	645.013.985,49	21.200.000,00	27.972.838,02	-107.247.860.968,68	0,00	0,00
15-dic-05	0,00	617.041.147,47	21.200.000,00	0,00	0,00	0,00	0,00
15-ene-06	0,00	617.041.147,47	21.200.000,00	0,00	0,00	0,00	0,00
15-feb-06	32.546.658,75	617.041.147,47	21.200.000,00	32.546.658,75	-121.789.597.042,50	0,00	0,00
15-mar-06	0,00	584.494.488,72	21.200.000,00	0,00	0,00	0,00	0,00
15-abr-06	0,00	584.494.488,72	21.200.000,00	0,00	0,00	0,00	0,00
15-may-06	30.608.886,55	584.494.488,72	21.200.000,00	30.608.886,55	-111.814.262.567,15	0,00	0,00
15-jun-06	0,00	553.885.602,17	21.200.000,00	0,00	0,00	0,00	0,00
15-jul-06	0,00	553.885.602,17	21.200.000,00	0,00	0,00	0,00	0,00
15-ago-06	24.588.822,40	553.885.602,17	21.200.000,00	24.588.822,40	-87.560.796.566,40	0,00	0,00
15-sep-06	0,00	529.296.779,77	21.200.000,00	0,00	0,00	0,00	0,00
15-oct-06	0,00	529.296.779,77	21.200.000,00	0,00	0,00	0,00	0,00
15-nov-06	21.033.977,43	529.296.779,77	21.200.000,00	21.033.977,43	-72.966.867.704,67	0,00	0,00
15-dic-06	0,00	508.262.802,34	21.200.000,00	0,00	0,00	0,00	0,00
15-ene-07	0,00	508.262.802,34	21.200.000,00	0,00	0,00	0,00	0,00
15-feb-07	24.321.100,15	508.262.802,34	21.200.000,00	24.321.100,15	-82.132.355.206,55	0,00	0,00
15-mar-07	0,00	483.941.702,19	21.200.000,00	0,00	0,00	0,00	0,00
15-abr-07	0,00	483.941.702,19	21.200.000,00	0,00	0,00	0,00	0,00
15-may-07	19.559.281,65	483.941.702,19	21.200.000,00	19.559.281,65	-64.310.918.065,20	0,00	0,00
15-jun-07	0,00	464.382.420,54	21.200.000,00	0,00	0,00	0,00	0,00
15-jul-07	0,00	464.382.420,54	21.200.000,00	0,00	0,00	0,00	0,00
15-ago-07	19.726.158,91	464.382.420,54	21.200.000,00	19.726.158,91	-63.044.803.876,36	0,00	0,00
15-sep-07	0,00	444.656.261,63	21.200.000,00	0,00	0,00	0,00	0,00
15-oct-07	0,00	444.656.261,63	21.200.000,00	0,00	0,00	0,00	0,00
15-nov-07	13.485.961,17	444.656.261,63	21.200.000,00	13.485.961,17	-41.860.423.471,68	0,00	0,00
15-dic-07	0,00	431.170.300,46	21.200.000,00	0,00	0,00	0,00	0,00
15-ene-08	0,00	431.170.300,46	21.200.000,00	0,00	0,00	0,00	0,00
15-feb-08	19.506.102,29	431.170.300,46	21.200.000,00	19.506.102,29	-58.752.380.097,48	0,00	0,00
15-mar-08	0,00	411.664.198,17	21.200.000,00	0,00	0,00	0,00	0,00
15-abr-08	0,00	411.664.198,17	21.200.000,00	0,00	0,00	0,00	0,00
15-may-08	15.097.836,76	411.664.198,17	21.200.000,00	15.097.836,76	-44.115.879.012,72	0,00	0,00
15-jun-08	0,00	396.566.361,41	21.200.000,00	0,00	0,00	0,00	0,00
15-jul-08	0,00	396.566.361,41	21.200.000,00	0,00	0,00	0,00	0,00
15-ago-08	17.872.437,44	396.566.361,41	21.200.000,00	17.872.437,44	-50.578.997.955,20	0,00	0,00
15-sep-08	0,00	378.693.923,97	21.200.000,00	0,00	0,00	0,00	0,00
15-oct-08	0,00	378.693.923,97	21.200.000,00	0,00	0,00	0,00	0,00
15-nov-08	11.203.992,04	378.693.923,97	21.200.000,00	11.203.992,04	-30.676.530.205,52	0,00	0,00
15-dic-08	0,00	367.489.931,93	21.200.000,00	0,00	0,00	0,00	0,00
15-ene-09	0,00	367.489.931,93	21.200.000,00	0,00	0,00	0,00	0,00
15-feb-09	12.558.585,58	367.489.931,93	21.200.000,00	12.558.585,58	-33.230.017.444,68	0,00	0,00
15-mar-09	0,00	354.931.346,35	21.200.000,00	0,00	0,00	0,00	0,00
15-abr-09	0,00	354.931.346,35	21.200.000,00	0,00	0,00	0,00	0,00
15-may-09	9.842.431,37	354.931.346,35	21.200.000,00	9.375.766,18	-23.973.834.122,74	466.665,19	-1.193.262.890,35
15-jun-09	0,00	345.555.580,17	20.733.334,81	0,00	0,00	0,00	0,00
15-jul-09	0,00	345.555.580,17	20.733.334,81	0,00	0,00	0,00	0,00
15-ago-09	12.465.400,39	345.555.580,17	20.733.334,81	11.759.811,69	-28.987.935.812,59	705.588,70	-1.739.276.148,76



1.062.000.000,000  
 6,00%  
 0,75%  
 15-may-16

69285,54

VIDA RESIDUAL DESDE

1,69

2,00

		SERIE A		SERIE B		PRINCIPAL		VIDA	
		PRINCIPAL	VIDA	PRINCIPAL	VIDA	PRINCIPAL	VIDA	PRINCIPAL	VIDA
15-sep-09	1	0,00	333.795.768,48	20.027.746,11	0,00	0,00	0,00	0,00	0,00
15-oct-09	1	0,00	333.795.768,48	20.027.746,11	0,00	0,00	0,00	0,00	0,00
15-nov-09	1	12.857.526,27	333.795.768,48	20.027.746,11	12.129.741,76	-28.783.877.206,33	727.784,51	-1.727.032.632,38	0,00
15-dic-09	1	0,00	321.666.026,72	19.299.961,60	0,00	0,00	0,00	0,00	0,00
15-ene-10	1	0,00	321.666.026,72	19.299.961,60	0,00	0,00	0,00	0,00	0,00
15-feb-10	1	12.584.982,31	321.666.026,72	19.299.961,60	11.872.624,82	-27.081.457.216,14	712.357,49	-1.624.887.432,97	0,00
15-mar-10	1	0,00	309.793.401,90	18.587.604,11	0,00	0,00	0,00	0,00	0,00
15-abr-10	1	0,00	309.793.401,90	18.587.604,11	0,00	0,00	0,00	0,00	0,00
15-may-10	1	10.560.215,51	309.793.401,90	18.587.604,11	9.962.467,46	-21.837.728.677,28	597.748,05	-1.310.263.720,64	0,00
15-jun-10	1	0,00	299.830.934,43	17.989.856,07	0,00	0,00	0,00	0,00	0,00
15-jul-10	1	0,00	299.830.934,43	17.989.856,07	0,00	0,00	0,00	0,00	0,00
15-ago-10	1	9.960.464,25	299.830.934,43	17.989.856,07	9.396.664,39	-19.732.995.212,26	563.799,86	-1.183.979.712,74	0,00
15-sep-10	1	0,00	290.434.270,05	17.426.056,20	0,00	0,00	0,00	0,00	0,00
15-oct-10	1	0,00	290.434.270,05	17.426.056,20	0,00	0,00	0,00	0,00	0,00
15-nov-10	1	8.147.583,17	290.434.270,05	17.426.056,20	7.686.399,22	-15.434.289.627,70	461.183,95	-926.057.377,66	0,00
15-dic-10	1	0,00	282.747.870,83	16.964.872,25	0,00	0,00	0,00	0,00	0,00
15-ene-11	1	0,00	282.747.870,83	16.964.872,25	0,00	0,00	0,00	0,00	0,00
15-feb-11	1	10.813.446,82	282.747.870,83	16.964.872,25	10.201.364,92	-19.545.815.195,40	612.081,90	-1.172.748.911,72	0,00
15-mar-11	1	0,00	272.546.505,91	16.352.790,35	0,00	0,00	0,00	0,00	0,00
15-abr-11	1	0,00	272.546.505,91	16.352.790,35	0,00	0,00	0,00	0,00	0,00
15-may-11	1	7.940.170,85	272.546.505,91	16.352.790,35	7.490.727,22	-13.685.558.625,42	449.443,63	-821.133.517,53	0,00
15-jun-11	1	0,00	265.055.778,69	15.903.346,72	0,00	0,00	0,00	0,00	0,00
15-jul-11	1	0,00	265.055.778,69	15.903.346,72	0,00	0,00	0,00	0,00	0,00
15-ago-11	1	7.680.966,69	265.055.778,69	15.903.346,72	7.246.194,99	-12.572.148.308,63	434.771,70	-754.328.898,52	0,00
15-sep-11	1	0,00	257.809.583,70	15.468.575,02	0,00	0,00	0,00	0,00	0,00
15-oct-11	1	0,00	257.809.583,70	15.468.575,02	0,00	0,00	0,00	0,00	0,00
15-nov-11	1	6.853.524,21	257.809.583,70	15.468.575,02	6.465.588,88	-10.622.962.525,50	387.935,33	-637.377.751,53	0,00
15-dic-11	1	0,00	251.343.994,82	15.080.639,69	0,00	0,00	0,00	0,00	0,00
15-ene-12	1	0,00	251.343.994,82	15.080.639,69	0,00	0,00	0,00	0,00	0,00
15-feb-12	1	9.533.199,13	251.343.994,82	15.080.639,69	8.993.584,08	-13.949.048.915,69	539.615,05	-836.942.934,94	0,00
15-mar-12	1	0,00	242.350.410,74	14.541.024,64	0,00	0,00	0,00	0,00	0,00
15-abr-12	1	0,00	242.350.410,74	14.541.024,64	0,00	0,00	0,00	0,00	0,00
15-may-12	1	9.033.021,26	242.350.410,74	14.541.024,64	8.521.718,17	-12.450.230.246,09	511.303,09	-747.013.814,77	0,00
15-jun-12	1	0,00	233.828.692,57	14.029.721,55	0,00	0,00	0,00	0,00	0,00
15-jul-12	1	0,00	233.828.692,57	14.029.721,55	0,00	0,00	0,00	0,00	0,00
15-ago-12	1	8.007.339,51	233.828.692,57	14.029.721,55	7.554.093,88	-10.341.554.518,10	453.245,63	-620.493.271,09	0,00
15-sep-12	1	0,00	226.274.598,69	13.576.475,92	0,00	0,00	0,00	0,00	0,00
15-oct-12	1	0,00	226.274.598,69	13.576.475,92	0,00	0,00	0,00	0,00	0,00
15-nov-12	1	7.186.508,19	226.274.598,69	13.576.475,92	6.779.724,71	-8.657.708.451,54	406.783,48	-519.462.507,09	0,00
15-dic-12	1	0,00	219.494.873,98	13.169.692,44	0,00	0,00	0,00	0,00	0,00
15-ene-13	1	0,00	219.494.873,98	13.169.692,44	0,00	0,00	0,00	0,00	0,00
15-feb-13	1	8.517.496,57	219.494.873,98	13.169.692,44	8.035.374,12	-9.521.918.335,33	482.122,45	-571.315.100,12	0,00
15-mar-13	1	0,00	211.459.499,86	12.687.569,99	0,00	0,00	0,00	0,00	0,00
15-abr-13	1	0,00	211.459.499,86	12.687.569,99	0,00	0,00	0,00	0,00	0,00
15-may-13	1	6.973.863,92	211.459.499,86	12.687.569,99	6.579.116,91	-7.210.712.128,60	394.747,01	-432.642.727,72	0,00
15-jun-13	1	0,00	204.880.382,95	12.292.822,98	0,00	0,00	0,00	0,00	0,00
15-jul-13	1	0,00	204.880.382,95	12.292.822,98	0,00	0,00	0,00	0,00	0,00
15-ago-13	1	6.515.003,52	204.880.382,95	12.292.822,98	6.515.003,52	-6.541.063.534,08	0,00	0,00	0,00
15-sep-13	1	0,00	198.365.379,43	12.292.822,98	0,00	0,00	0,00	0,00	0,00
15-oct-13	1	0,00	198.365.379,43	12.292.822,98	0,00	0,00	0,00	0,00	0,00
15-nov-13	1	6.080.651,22	198.365.379,43	12.292.822,98	5.367.689,63	-4.895.332.943,42	712.961,59	-650.220.969,22	0,00
15-dic-13	1	0,00	192.997.689,80	11.579.861,39	0,00	0,00	0,00	0,00	0,00
15-ene-14	1	0,00	192.997.689,80	11.579.861,39	0,00	0,00	0,00	0,00	0,00
15-feb-14	1	7.153.270,94	192.997.689,80	11.579.861,39	6.748.368,81	-5.533.662.425,28	404.902,13	-332.019.745,52	0,00
15-mar-14	1	0,00	186.249.320,99	11.174.959,26	0,00	0,00	0,00	0,00	0,00
15-abr-14	1	0,00	186.249.320,99	11.174.959,26	0,00	0,00	0,00	0,00	0,00
15-may-14	1	7.469.918,55	186.249.320,99	11.174.959,26	7.047.092,97	-5.151.424.962,31	422.825,58	-309.085.497,74	0,00
15-jun-14	1	0,00	179.202.228,02	10.752.133,68	0,00	0,00	0,00	0,00	0,00
15-jul-14	1	0,00	179.202.228,02	10.752.133,68	0,00	0,00	0,00	0,00	0,00
15-ago-14	1	6.039.715,18	179.202.228,02	10.752.133,68	5.697.844,51	-3.640.922.641,53	341.870,67	-218.455.358,49	0,00
15-sep-14	1	0,00	173.504.383,51	10.410.263,01	0,00	0,00	0,00	0,00	0,00
15-oct-14	1	0,00	173.504.383,51	10.410.263,01	0,00	0,00	0,00	0,00	0,00
15-nov-14	1	5.749.172,43	173.504.383,51	10.410.263,01	5.423.747,58	-2.966.789.923,78	325.424,85	-178.007.395,43	0,00
15-dic-14	1	0,00	168.080.635,93	10.084.838,16	0,00	0,00	0,00	0,00	0,00
15-ene-15	1	0,00	168.080.635,93	10.084.838,16	0,00	0,00	0,00	0,00	0,00
15-feb-15	1	6.377.229,41	168.080.635,93	10.084.838,16	6.016.254,16	-2.737.395.642,97	360.975,25	-164.243.738,58	0,00
15-mar-15	1	0,00	162.064.381,77	9.723.862,91	0,00	0,00	0,00	0,00	0,00
15-abr-15	1	0,00	162.064.381,77	9.723.862,91	0,00	0,00	0,00	0,00	0,00
15-may-15	1	5.853.288,37	162.064.381,77	9.723.862,91	5.521.970,16	-2.021.041.078,70	331.318,21	-121.262.464,72	0,00
15-jun-15	1	0,00	156.542.411,61	9.392.544,70	0,00	0,00	0,00	0,00	0,00
15-jul-15	1	0,00	156.542.411,61	9.392.544,70	0,00	0,00	0,00	0,00	0,00
15-ago-15	1	5.475.052,69	156.542.411,61	9.392.544,70	5.165.144,05	-1.415.249.468,92	309.908,64	-84.914.968,14	0,00
15-sep-15	1	0,00	151.377.267,57	9.082.636,05	0,00	0,00	0,00	0,00	0,00
15-oct-15	1	0,00	151.377.267,57	9.082.636,05	0,00	0,00	0,00	0,00	0,00
15-nov-15	1	4.883.517,83	151.377.267,57	9.082.636,05	4.883.517,83	-888.800.245,06	0,00	0,00	0,00
15-dic-15	1	0,00	146.493.749,74	9.082.636,05	0,00	0,00	0,00	0,00	0,00
15-ene-16	1	0,00	146.493.749,74	9.082.636,05	0,00	0,00	0,00	0,00	0,00
15-feb-16	1	6.343.306,10	146.493.749,74	9.082.636,05	6.343.306,10	-570.897.549,00	0,00	0,00	0,00
15-mar-16	1	0,00	140.150.443,64	9.082.636,05	0,00	0,00	0,00	0,00	0,00
15-abr-16	1	0,00	140.150.443,64	9.082.636,05	0,00	0,00	0,00	0,00	0,00
15-may-16	1	6.066.214,96	140.150.443,64	9.082.636,05	6.066.214,96	0,00	0,00	0,00	0,00
15-jun-16	1	0,00	134.084.228,68	9.082.636,05	0,00	0,00	0,00	0,00	0,00
15-jul-16	1	0,00	134.084.228,68	9.082.636,05	0,00	0,00	0,00	0,00	0,00
15-ago-16	1	6.524.852,83	134.084.228,68	9.082.636,05	6.524.852,83	600.286.460,35	0,00	0,00	0,00
15-sep-16	1	0,00	127.559.375,85	9.082.636,05	0,00	0,00	0,00	0,00	0,00

1.062.000.000,000  
 6,00%  
 0,75%  
 15-may-16

69285,54

VIDA RESIDUAL DESDE

1,69

2,00

	Principal	SERIE A	SERIE B	SERIE A PRINCIPAL	VIDA	SERIE B PRINCIPAL	VIDA
15-oct-16 1	0,00	127.559.375,85	9.082.636,05	0,00	0,00	0,00	0,00
15-nov-16 1	6.331.480,46	127.559.375,85	9.082.636,05	6.331.480,46	1.164.992.405,07	0,00	0,00
15-dic-16 1	0,00	121.227.895,38	9.082.636,05	0,00	0,00	0,00	0,00
15-ene-17 1	0,00	121.227.895,38	9.082.636,05	0,00	0,00	0,00	0,00
15-feb-17 1	6.143.679,69	121.227.895,38	9.082.636,05	6.143.679,69	1.695.655.595,38	0,00	0,00
15-mar-17 1	0,00	115.084.215,69	9.082.636,05	0,00	0,00	0,00	0,00
15-abr-17 1	0,00	115.084.215,69	9.082.636,05	0,00	0,00	0,00	0,00
15-may-17 1	5.963.811,01	115.084.215,69	9.082.636,05	5.963.811,01	2.176.791.020,10	0,00	0,00
15-jun-17 1	0,00	109.120.404,68	9.082.636,05	0,00	0,00	0,00	0,00
15-jul-17 1	0,00	109.120.404,68	9.082.636,05	0,00	0,00	0,00	0,00
15-ago-17 1	5.295.180,41	109.120.404,68	9.082.636,05	5.295.180,41	2.419.897.447,85	0,00	0,00
15-sep-17 1	0,00	103.825.224,27	9.082.636,05	0,00	0,00	0,00	0,00
15-oct-17 1	0,00	103.825.224,27	9.082.636,05	0,00	0,00	0,00	0,00
15-nov-17 1	4.900.444,81	103.825.224,27	9.082.636,05	4.900.444,81	2.690.344.198,25	0,00	0,00
15-dic-17 1	0,00	98.924.779,46	9.082.636,05	0	0,00	0,00	0,00
15-ene-18 1	0,00	98.924.779,46	9.082.636,05	0	0,00	0,00	0,00
15-feb-18 1	4.756.013,63	98.924.779,46	9.082.636,05	4.756.013,63	3.048.604.733,90	0,00	0,00
15-mar-18 1	0,00	94.168.765,83	9.082.636,05	0	0	0,00	0,00
15-abr-18 1	0,00	94.168.765,83	9.082.636,05	0	0	0,00	0,00
15-may-18 1	103.252.336,07	94.168.765,83	9.082.636,05	94.168.765,83	68.743.199.059,09	9.082.636,05	6.630.324.319,39