



FONDO DE TITULIZACIÓN RMBS 5

SANTANDER DE TITULIZACION, S.G.F.T, S.A.

JUAN IGNACIO LUCA DE TENA 11-13

28027 MADRID

santanderdetitulizacion@gruposantander.es



NAME OF THE FUND: FONDO DE TITULIZACIÓN RMBS SANTANDER 5

INFORMATION AT: QUARTER/SEMESTER 17 10 2019 - 17 01 2020 YEAR: 2020

Acting on behalf of Santander de Titulización S.G.F.T., S.A. as General Manager:	Signature:
Iñaki Reyero Arregui - Managing Director	

I. DATA OF THE FUND

Constitution Date	December 15th, 2015	Paying Agency	BANCO SANTANDER	
Disbursement Date	December 18th, 2015	Negotiation Market	AIAF	
Final Date of Redemption	October 17th, 2065	Rating Agencies	DBRS / Scope / Moody's	
Gestora	Santander de Titulización	Rating	Initial	Current
Credit Rights's Seller	Banco Santander	Series A	A (low)/A+(sf)/A2 (sf)	AA/AA/Aa1 (sf)
		Series B	CCC/CC(sf)/Caa1 (sf)	B (low)/CC(sf)/Caa1 (sf)
		Series C	C/C(sf)/Ca (sf)	C/C(sf)/Ca (sf)

II. SECURITIES ISSUED CHARGED TO THE FUND: SECURITISATION BONDS

SERIES PRIORITY OF PAYMENT (ISIN CODE)	NUMBER OF BONDS	NOMINAL			
			INITIAL	CURRENT	%Curr/In
Series A ES0305108005	10.136	Nominal per Bond	100.000,00 €	63.496,18 €	63,50%
		Total Nominal	1.013.600.000,00 €	643.597.280,48 €	
Series B ES0305108013	2.614	Nominal per Bond	100.000,00 €	100.000,00 €	100,00%
		Total Nominal	261.400.000,00 €	261.400.000,00 €	
Series C ES0305108021	637	Nominal per Bond	100.000,00 €	100.000,00 €	100,00%
		Total Nominal	63.700.000,00 €	63.700.000,00 €	

REDEMPTION AND INTEREST OF THE BONDS					
Current			Next		
Payment Date of the Current Period January 17th, 2020			Next Payment Date April 17th, 2020		
	Redemption of the Bonds	Gross Interest	Interest Rate	Gross Interest in Next Payment Date	Net Interest in Next Payment Date
Series A	2.052,09 €	30,49 €	0,207%	33,22 €	26,91 €
Series B	0,00 €	54,18 €	0,237%	59,91 €	48,53 €
Series C	0,00 €	0,00 €	0,257%	64,96 €	52,62 €
Accrued amortisation due not payed	0,00 €				
Scheduled Amortisation	NO				



NAME OF THE FUND: FONDO DE TITULIZACIÓN RMBS SANTANDER 5

INFORMATION AT: QUARTER/SEMESTER 17 10 2019 - 17 01 2020 YEAR: 2020

III. ASSETS PURCHASED BY THE FUND: CREDIT RIGHTS

CREDIT RIGHTS	ISSUE DATE	CURRENT DATE
Number of CR's	8.856	7.865
Principal Outstanding	1.275.000.037,12 €	904.997.186,01 €
Principal Outstanding per Loan	143.970,19 €	115.066,39 €
Interest Rate	1,40%	0,91%

PREPAYMENT RATE	CURRENT DATE
Monthly Single Rate	7,16%
Average 12 Monthly Single Rate	4,46%
Prepayment Rate from Constitution	4,27%

CURRENT DELINQUENCY	Up to 1 month	From 1 to 6 months	Greater than 6 months
Debt Due (Principal + Interest)	130.574,86 €	216.315,42 €	146.360,52 €
Debt to be amortised			904.595.432,28 €
Total Debt	130.574,86 €	216.315,42 €	904.741.792,80 €

F.T. RMBS SANTANDER 5

QUARTERLY BONDS PAYOUT REPORT

January 17,2020

BONDS. PRINCIPAL	
Previous Balance	989.497.264,72 €
Principal Amortised	20.799.984,24 €
Outstanding Balance	968.697.280,48 €
% of Initial Balance	72,36%
Principal Accrued and unpaid	0,00 €

DATA	
Pool Cut-off Date	January 10,2020
Payment Date	January 17,2020
Previous Payment Date	October 17,2019
Number of Days (Act/360)	92
Reference Interest Rate (%)	-0,393%
Next Payment Date	April 17,2020

INTEREST PAID	
CLASS A	309.046,64 €
CLASS B	141.626,52 €
CLASS C	- €
Interest accrued and unpaid	508.281,41 €

RESIDUAL LIFE (YEARS)		
	INITIAL	January 17,2020
Class A	6,12	5,15
Class B	17,95	15,14
Class C	19,34	16,51

In compliance with the provisions of the prospectus regarding the article 405 from Regulation (EU) No 575/2013 Santander continues to retain a significant net financial interest in this fund on an ongoing basis .

F.T. RMBS SANTANDER 5

QUARTERLY COLLATERAL REPORT

January 17,2020

PRINCIPAL	
Previous Balance	925.797.168,92 €
Principal Amortised	20.799.982,91 €
Outstanding Balance	904.997.186,01 €
Number of Credit Rights	7.865
LTV	82,69%

INTEREST	
Interest received during relevant period	2.079.463,20 €
Interest accrued during relevant period	2.105.584,83 €

PRINCIPAL BALANCE IN ARREARS					
	UP to 30 DAYS	30 to 60 DAYS	60 to 90 DAYS	90 to 180 DAYS	MORE THAN 180
Principal Balance in Arrears	112.022,72 €	77.717,50 €	36.729,09 €	65.041,17 €	110.243,25 €
Interest accrued on Credit Rights's in Arrears	18.552,14 €	13.590,19 €	8.203,83 €	15.033,64 €	36.117,27 €
Outstanding Balance	37.193.567,84 €	11.360.934,11 €	3.464.871,46 €	3.586.891,48 €	5.798.169,98 €
Number of Credit Rights	303	89	27	35	50
% of Outstanding Balance	4,11%	1,26%	0,38%	0,40%	0,64%

WRITE OFF	
WRITE OFF as of previous balance	13.734.084,22 €
Difference in Actual Period	378.809,67 €
WRITE OFF up to date	14.112.893,89 €

F.T. RMBS SANTANDER 5**QUARTERLY COLLATERAL REPORT**

January 17,2020

CONTENTIOUS

Last balance	1.891.997,70 €
Difference in Actual Period	96.503,70 €
Current balance	1.988.501,40 €
Number of Credit Rights	14

TRANSITORY PROPERTIES

Last balance	4.517.912,42 €
Difference in Actual Period	86.936,97 €
Current balance	4.604.849,39 €
Number of Credit Rights	60

NET LOSSES

Last balance	5.041.194,45 €
Difference in Actual Period	101.406,93 €
Current balance	5.142.601,38 €

F.T. RMBS SANTANDER 5

QUARTERLY REPORT - ALLOCATION OF CASH

January 17,2020

TOTAL CASH RECEIVED END OF PERIOD	79.394.519,54 €
CASH RECEIVED - PRINCIPAL	
Amortisation of Credit Rights	19.765.371,37 €
CASH RECEIVED - INTEREST	
Interest received from Credit Rights	2.079.463,20 €
Interest received under GIC	0,00 €
CONTENTIOUS	181.115,35 €
INCOMES/EXPENSES OF TRANSITORY PROPERTIES	171.998,24 €
WITHHOLDING OF RESERVE FUND	57.197.081,43 €
OTHERS	(510,05) €

TREASURY ACCOUNT STATEMENT	58.078.505,12 €
PRINCIPAL RESERVE FUND	
Previous Balance	57.197.081,43 €
Difference	(881.423,70) €
Outstanding Balance	58.078.505,12 €
WITHHOLDING TAXES AND OTHER EXPENSES	0,00 €
OTHERS	0,00 €

TOTAL CASH PAID END OF PERIOD	79.394.519,54 €
Fee management	49.881,51 €
Ordinary Expenses	15.475,51 €
Interest paid to Class A Bondholders	309.046,64 €
Interest paid to Class B Bondholders	141.626,52 €
Principal withholding Series A	20.799.984,24 €
Principal withholding Series B	0,00 €
Interest deferred Class B Bondholders	0,00 €
Withholding reserve fund	58.078.505,12 €
Interest paid to Class C Bondholders	0,00 €
Principal withholding Class C	0,00 €
Interest paid to Subordinated Loan	0,00 €
Repayment of Subordinated Loan	0,00 €
Fixed fee in favour of Banco Santander	0,00 €
Extraordinary interest paid to Class C	0,00 €
Residual	0,00 €

F.T. RMBS SANTANDER 5

CREDIT ENHANCEMENT AND SUBORDINATED LOAN

January 17,2020

CREDIT ENHANCEMENT		
CONCEPTS	INITIAL	January 17,2020
SUBORDINATED ISSUE	20,50%	28,88%
PRINCIPAL RESERVE FUND	63.700.000 € (5%)	58.078.505,12 € (6,42%)

SUBORDINATED LOANS		
CONCEPTS	INITIAL	January 17,2020
SUBORDINATED LOAN PRINCIPAL		
Total Outstanding Subordinated Loan	830.000,00 €	307.837,94 €
Interest Rate	0,548%	0,257%

F.T. RMBS SANTANDER 5

TRIGGERS OF THE MODEL

January 17,2020

RESERVE FUND'S TRIGGERS	
1. AMOUNT REQUIRED WITHHELD:	63.700.000,00 €
R.F. SHALL BE THE LESSER OF:	
1.a) INITIAL RESERVE AMOUNT	63.700.000,00 €
1.b) THE GREATER OF:	
1.b.1) 10,00% OUTSTANDING SERIES A and B in Pool Cut-off Date	92.579.726,47 €
1.b.2) 2,50% INITIAL OUTSTANDING SERIES A and B	31.875.000,00 €
2. NEITHER 2.a), 2.b) NOR 2.c) SHALL OCCUR	
2.a) R.F. IN PREVIOUS PAYMENT DATE NOT WITHHELD TOTALLY	YES
2.b) LOANS IN ARREARS >1,00% CR's (WITHOUT WRITE-OFF)	YES
2.d) PAYMENT DATE < 15.12.2018	NO

RESERVE FUND'S LEVEL IS AT LOWER REQUIRED LEVEL

DEFERRAL INTEREST TRIGGERS	
1. SERIES B WILL DEFER INTEREST PAYMENT IF 1.a) IS GREATER THAN 1.b)	
1.a) Cumulative Write-off loans in Pool Cut-off date	21.700.307,18 €
1.b) 10% of Initial Outstanding of Credit Rights	127.500.003,71 €

No deferral on interest of Series B

FAILED CUMULATIVE LOANS	
Last balance	20.995.046,29 €
Difference in Actual Period	705.260,89 €
Current balance	21.700.307,18 €

F.T. RMBS SANTANDER 5

DEFINITIONS

January 17,2020

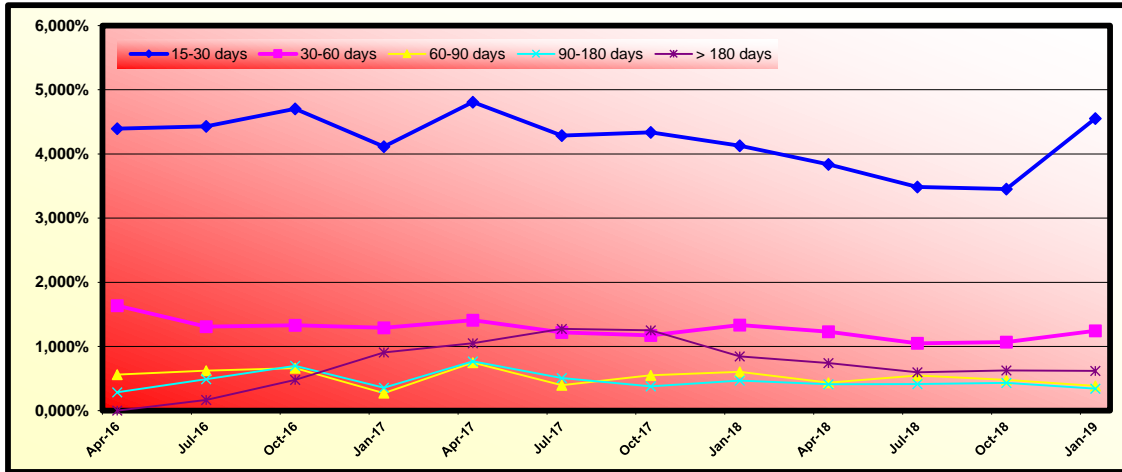
<u>POOL CUT-OFF DATE</u>	Means the date in which the Gestora will carry out the necessary calculations, on behalf of the Fund, for the distribution of the available funds at this date, according with the Order of Priority of Payments. All the information regarding the Assets (Outstanding Balance of the Credit Rights, arrears' tables, transitory properties, stratification tables, etc.) are referred to this mentioned date.
<u>WRITE OFF</u>	Those loans that at a given date are unpaid for a period equal or higher to 12 or 18 months (according to Prospectus) of arrears in due payments.
<u>NET LOSSES</u>	Those loans which the Originator considers that will not recover (net of recoveries).
<u>FAILED LOANS</u>	Those loans which the Originator considers that will not recover or those loans that at a given date are unpaid for a period equal or greater than 12 or 18 months (according to Prospectus)
<u>TRANSITORY PROPERTIES</u>	Those assets in the balance of the Fund as a consequence of a judicial or non-judicial process.
<u>CONTENTIOUS / JUDICIAL</u>	Loans in which the Originator will take legal actions. This amount is included in the bucket > 180 days in arrears.

FONDO DE TITULIZACIÓN DE ACTIVOS RMBS 5

HISTORICAL ARREARS REPORTS

January 17th, 2020

Date	Oct-18	Jan-19	Apr-19	Jul-19	Oct-19	Jan-20
15-30 days	3,453%	4,551%	3,932%	3,353%	3,768%	4,110%
30-60 days	1,069%	1,246%	1,280%	1,267%	1,310%	1,255%
60-90 days	0,478%	0,385%	0,363%	0,247%	0,246%	0,383%
90-180 days	0,433%	0,344%	0,334%	0,459%	0,473%	0,396%
> 180 days	0,626%	0,620%	0,544%	0,556%	0,512%	#¡REF!



FONDO DE TITULIZACIÓN DE ACTIVOS RMBS 5
QUARTERLY STATISTIC INFORMATION

January 17th, 2020

Debtor's concentration

Debtor	Ppal Outstanding	%	Nº Assets	%
Debtor nº 1	2.640.715,85	0,2873%	1	0,0127%
Debtor nº 2	1.756.707,32	0,1911%	1	0,0127%
Debtor nº 3	1.442.020,42	0,1569%	1	0,0127%
Debtor nº 4	1.421.771,33	0,1547%	1	0,0127%
Debtor nº 5	1.346.380,77	0,1465%	1	0,0127%
Debtor nº 6	1.326.203,56	0,1443%	1	0,0127%
Debtor nº 7	1.306.353,49	0,1421%	1	0,0127%
Debtor nº 8	1.280.848,43	0,1394%	1	0,0127%
Debtor nº 9	1.257.394,78	0,1368%	1	0,0127%
Debtor nº 10	1.230.407,40	0,1339%	1	0,0127%
Debtor nº 11	1.130.516,53	0,1230%	1	0,0127%
Debtor nº 12	1.103.708,87	0,1201%	1	0,0127%
Debtor nº 13	1.102.367,51	0,1199%	1	0,0127%
Debtor nº 14	1.077.624,68	0,1172%	1	0,0127%
Debtor nº 15	1.066.358,96	0,1160%	1	0,0127%
Debtor nº 16	1.010.430,65	0,1099%	1	0,0127%
Debtor nº 17	991.404,52	0,1079%	1	0,0127%
Debtor nº 18	990.787,24	0,1078%	1	0,0127%
Debtor nº 19	953.424,15	0,1037%	1	0,0127%
Debtor nº 20	922.329,38	0,1004%	1	0,0127%
Rest debtors	893.752.324,06	97,2411%	7.845	99,7457%
TOTAL	919.110.079,90	100,0000%	7.865	100,0000%

Debtor's Region

Debtor's Region	Ppal Outstanding	%	Nº Assets	%
ANDALUCIA	171.138.136	18,6200%	1.749	22,2378%
ARAGON	25.996.958	2,8285%	226	2,8735%
ASTURIAS	14.389.550	1,5656%	141	1,7928%
BALEARES	20.800.042	2,2631%	160	2,0343%
CANARIAS	64.654.428	7,0345%	663	8,4298%
CANTABRIA	23.327.791	2,5381%	232	2,9498%
CASTILLA-LEON	42.811.131	4,6579%	471	5,9886%
CASTILLA-LA MANCHA	34.909.839	3,7982%	377	4,7934%
CATALU#A	120.374.444	13,0968%	774	9,8411%
COMUNIDAD VALENCIANA	84.731.346	9,2188%	824	10,4768%
EXTREMADURA	14.243.384	1,5497%	157	1,9962%
GALICIA	29.984.799	3,2624%	329	4,1831%
MADRID	221.857.891	24,1383%	1.340	17,0375%
MURCIA	14.236.685	1,5490%	155	1,9708%
NAVARRA	5.838.159	0,6352%	57	0,7247%
PAIS VASCO	24.875.066	2,7064%	159	2,0216%
LA RIOJA	3.078.512	0,3349%	36	0,4577%
CEUTA	860.029	0,0936%	6	0,0763%
MELILLA	1.001.891	0,1090%	9	0,1144%
TOTAL	919.110.079,90	100,0000%	7.865	100,0000%

LOAN TO VALUE RATIO

LTV	Ppal Outstanding	%	Nº Assets	%
0 - 10	223.121,72	0,0243%	24	0,3051%
10 - 20	938.326,13	0,1021%	31	0,3942%
20 - 30	2.536.813,87	0,2760%	50	0,6357%
30 - 40	4.775.859,58	0,5196%	76	0,9663%
40 - 50	11.235.864,82	1,2225%	167	2,1233%
50 - 60	29.921.180,74	3,2555%	380	4,8315%
60 - 70	134.167.234,51	14,5975%	1.279	16,2619%
70 - 80	260.440.017,12	28,3361%	2.215	28,1627%
80 - 90	192.096.638,45	20,9003%	1.544	19,6313%
>100	282.775.022,96	30,7662%	2.099	26,6879%
TOTAL	919.110.079,90	100,0000%	7.865	100,0000%

Weighted Average Ratio: 82,69

FONDO DE TITULIZACIÓN RMBS SANTANDER 5

Monthly Single Rate	7,16%
Average 12 Moth Single Rate	4,46%
Prepayment Rate from Constitution	4,27%

4,27%
0,36%

Date	Outstanding	Real outstanding	Prepaymnet vector CPR	Remaining end of month	Average Single Monthly	TACP	Monthly Single Monthly	TACP	Outstanding after payment
							4,26%		
18-dic.-15	1.275.000.000,00		100,00%	100,00%					1.275.000.000,00
31-dic.-15	1.272.849.519,03	1.269.646.468,29	99,64%	99,75%	0,25%	2,98%	0,25%	2,98%	1.268.231.930,40
31-ene.-16	1.269.871.930,00	1.261.269.179,49	99,28%	99,32%	0,34%	4,00%	0,43%	5,00%	1.260.675.068,98
29-feb.-16	1.267.721.449,03	1.254.358.533,00	98,92%	98,95%	0,35%	4,15%	0,38%	4,46%	1.253.974.484,80
31-mar.-16	1.264.044.973,09	1.247.020.266,66	98,56%	98,65%	0,34%	3,99%	0,30%	3,49%	1.245.801.954,11
30-abr.-16	1.260.327.554,97	1.239.224.253,41	98,20%	98,33%	0,34%	3,97%	0,33%	3,91%	1.237.632.011,34
31-may.-16	1.256.592.987,07	1.232.489.534,00	97,84%	98,08%	0,32%	3,80%	0,25%	2,93%	1.229.488.170,31
30-jun.-16	1.252.832.904,60	1.225.006.519,37	97,49%	97,78%	0,32%	3,78%	0,31%	3,64%	1.221.362.255,38
31-jul.-16	1.249.057.801,28	1.217.391.586,72	97,13%	97,46%	0,32%	3,78%	0,32%	3,79%	1.213.264.526,90
31-ago.-16	1.245.209.219,52	1.210.959.644,41	96,78%	97,25%	0,31%	3,65%	0,22%	2,62%	1.205.138.363,81
30-sep.-16	1.241.395.741,49	1.205.309.445,08	96,43%	97,09%	0,29%	3,48%	0,16%	1,91%	1.197.089.043,74
31-oct.-16	1.237.561.421,23	1.197.510.389,35	96,08%	96,76%	0,30%	3,53%	0,34%	4,00%	1.189.062.239,81
30-nov.-16	1.233.719.659,96	1.190.322.067,62	95,73%	96,48%	0,30%	3,52%	0,29%	3,43%	1.181.070.796,58
31-dic.-16	1.229.856.160,95	1.181.415.885,88	95,39%	96,06%	0,31%	3,64%	0,44%	5,11%	1.173.100.951,98
31-ene.-17	1.225.963.900,04	1.173.370.028,93	95,04%	95,71%	0,31%	3,69%	0,37%	4,30%	1.165.146.054,01
28-feb.-17	1.222.048.668,08	1.167.199.559,10	94,69%	95,51%	0,31%	3,61%	0,21%	2,46%	1.157.211.681,87
31-mar.-17	1.218.119.199,89	1.159.735.643,98	94,35%	95,21%	0,31%	3,62%	0,32%	3,76%	1.149.306.111,63
30-abr.-17	1.214.166.964,39	1.151.948.787,33	94,01%	94,88%	0,31%	3,65%	0,35%	4,10%	1.141.421.267,50
31-may.-17	1.210.214.020,06	1.143.311.616,40	93,67%	94,47%	0,32%	3,72%	0,43%	4,99%	1.133.577.842,45
30-jun.-17	1.206.254.905,88	1.136.997.499,61	93,33%	94,26%	0,31%	3,67%	0,23%	2,68%	1.125.770.545,48
31-jul.-17	1.202.286.527,57	1.128.070.599,85	92,99%	93,83%	0,32%	3,75%	0,46%	5,36%	1.117.996.361,24
31-ago.-17	1.198.263.313,26	1.121.369.627,49	92,65%	93,58%	0,32%	3,72%	0,26%	3,08%	1.110.212.960,30
30-sep.-17	1.194.286.355,73	1.115.398.829,22	92,32%	93,39%	0,31%	3,66%	0,20%	2,39%	1.102.514.020,68
31-oct.-17	1.190.294.506,38	1.105.623.792,80	91,98%	92,89%	0,32%	3,78%	0,54%	6,34%	1.094.842.632,13
30-nov.-17	1.186.300.617,71	1.097.312.310,66	91,65%	92,50%	0,32%	3,82%	0,42%	4,90%	1.087.210.524,68
31-dic.-17	1.182.303.955,77	1.085.986.275,46	91,31%	91,85%	0,34%	4,00%	0,70%	8,06%	1.079.616.850,90
31-ene.-18	1.178.301.042,58	1.075.514.174,55	90,98%	91,28%	0,35%	4,13%	0,63%	7,28%	1.072.058.277,14
28-feb.-18	1.174.293.890,59	1.069.590.684,78	90,65%	91,08%	0,35%	4,07%	0,21%	2,51%	1.064.536.493,69
31-mar.-18	1.170.286.957,90	1.062.671.451,81	90,32%	90,80%	0,34%	4,05%	0,31%	3,62%	1.057.055.373,76
30-abr.-18	1.166.261.698,10	1.055.758.610,25	90,00%	90,53%	0,34%	4,04%	0,31%	3,63%	1.049.598.029,45
31-may.-18	1.162.240.659,77	1.046.982.211,27	89,67%	90,08%	0,35%	4,09%	0,49%	5,70%	1.042.184.665,89
30-jun.-18	1.158.216.353,14	1.039.337.993,61	89,34%	89,74%	0,35%	4,11%	0,39%	4,53%	1.034.808.356,67
31-jul.-18	1.154.186.005,17	1.031.543.344,87	89,02%	89,37%	0,35%	4,13%	0,40%	4,73%	1.027.466.472,52
31-ago.-18	1.150.100.111,28	1.024.604.935,85	88,70%	89,09%	0,35%	4,11%	0,32%	3,77%	1.020.114.970,70
30-sep.-18	1.146.061.929,98	1.017.482.308,23	88,38%	88,78%	0,35%	4,11%	0,35%	4,07%	1.012.845.452,26
31-oct.-18	1.142.008.960,73	1.010.493.403,54	88,06%	88,48%	0,35%	4,11%	0,33%	3,94%	1.005.602.230,97
30-nov.-18	1.137.960.311,47	1.001.880.801,71	87,74%	88,04%	0,35%	4,16%	0,50%	5,83%	998.402.023,47
31-dic.-18	1.133.908.373,74	993.322.773,09	87,42%	87,60%	0,36%	4,20%	0,50%	5,84%	991.237.948,14
31-ene.-19	1.129.849.821,04	986.557.586,67	87,10%	87,32%	0,36%	4,19%	0,32%	3,82%	984.106.950,57
28-feb.-19	1.125.785.381,67	978.992.576,59	86,78%	86,96%	0,36%	4,21%	0,41%	4,79%	977.009.538,01
31-mar.-19	1.121.719.936,38	968.674.067,54	86,47%	86,36%	0,37%	4,31%	0,70%	8,03%	969.949.799,55
30-abr.-19	1.117.632.887,44	961.987.071,71	86,16%	86,07%	0,37%	4,29%	0,33%	3,86%	962.909.812,20
31-may.-19	1.113.549.630,92	955.274.808,64	85,84%	85,79%	0,36%	4,29%	0,33%	3,93%	955.911.393,98
30-jun.-19	1.109.461.171,54	949.321.181,55	85,53%	85,57%	0,36%	4,26%	0,26%	3,04%	948.946.630,26
31-jul.-19	1.105.365.799,52	942.203.703,85	85,22%	85,24%	0,36%	4,26%	0,38%	4,49%	942.013.928,02
31-ago.-19	1.101.210.854,85	935.744.250,76	84,91%	84,97%	0,36%	4,25%	0,31%	3,67%	935.068.452,60
30-sep.-19	1.097.101.175,78	929.322.035,78	84,60%	84,71%	0,36%	4,24%	0,31%	3,71%	928.199.269,50
31-oct.-19	1.092.973.811,08	922.622.706,13	84,30%	84,41%	0,36%	4,23%	0,35%	4,07%	921.352.711,17
30-nov.-19	1.088.848.336,18	916.885.791,82	83,99%	84,21%	0,36%	4,21%	0,25%	2,90%	914.545.199,76
31-dic.-19	1.084.717.624,46	907.770.572,21	83,69%	83,69%	0,36%	4,27%	0,62%	7,16%	907.770.572,21

FLows FOR EVERY BOND WITHOUT WITHHOLDING FOR THE HOLDER
(AMOUNTS IN EUR)
CPR: 4,27%

Payment Date	Series A Bonds			Series B Bonds			Series C Bonds		
	Principal Repayment	Gross Interest	Total Flow	Principal Repayment	Gross Interest	Total Flow	Principal Repayment	Gross Interest	Total Flow
TOTALS:	643.597.280,48	26.819.351,52	670.416.632,00	261.400.000,00	33.216.342,39	294.616.342,39	63.700.000,00	#N/A	#N/A
17-ene.-20									
17-abr.-20	19.145.473,57	1.298.242,98	20.443.716,55	0,00	547.110,20	547.110,20	0,00	136.544,49	136.544,49
17-jul.-20	18.846.428,07	1.259.623,37	20.106.051,44	0,00	547.110,20	547.110,20	0,00	136.544,49	136.544,49
19-oct.-20	18.694.992,42	1.235.031,24	19.930.023,66	0,00	553.122,40	553.122,40	0,00	138.044,98	138.044,98
18-ene.-21	18.382.215,25	1.196.905,91	19.579.121,16	0,00	553.122,40	553.122,40	0,00	138.044,98	138.044,98
19-abr.-21	17.912.132,42	1.134.213,70	19.046.346,12	0,00	541.098,00	541.098,00	0,00	135.044,00	135.044,00
19-jul.-21	18.355.718,72	1.110.684,32	19.466.403,04	0,00	547.110,20	547.110,20	0,00	136.544,49	136.544,49
18-oct.-21	18.193.543,61	1.085.456,21	19.278.999,82	0,00	553.122,40	553.122,40	0,00	138.044,98	138.044,98
17-ene.-22	17.891.030,31	1.048.353,51	18.939.383,82	0,00	553.122,40	553.122,40	0,00	138.044,98	138.044,98
18-abr.-22	17.427.498,76	989.870,61	18.417.369,37	0,00	541.098,00	541.098,00	0,00	135.044,00	135.044,00
18-jul.-22	17.246.568,95	965.715,01	18.212.283,96	0,00	547.110,20	547.110,20	0,00	136.544,49	136.544,49
17-oct.-22	17.090.308,54	941.155,76	18.031.464,30	0,00	553.122,40	553.122,40	0,00	138.044,98	138.044,98
17-ene.-23	16.798.513,76	906.302,92	17.704.816,68	0,00	553.122,40	553.122,40	0,00	138.044,98	138.044,98
17-abr.-23	16.377.023,88	853.087,65	17.230.111,53	0,00	541.098,00	541.098,00	0,00	135.044,00	135.044,00
17-jul.-23	16.206.968,33	829.531,21	17.036.499,54	0,00	547.110,20	547.110,20	0,00	136.544,49	136.544,49
17-oct.-23	16.064.084,01	805.595,53	16.869.679,54	0,00	553.122,40	553.122,40	0,00	138.044,98	138.044,98
17-ene.-24	15.780.146,23	772.833,51	16.552.981,73	0,00	553.122,40	553.122,40	0,00	138.044,98	138.044,98
17-abr.-24	15.440.317,03	732.603,94	16.172.920,96	0,00	547.110,20	547.110,20	0,00	136.544,49	136.544,49
17-jul.-24	15.203.766,08	701.458,24	15.905.224,32	0,00	547.110,20	547.110,20	0,00	136.544,49	136.544,49
17-oct.-24	15.023.640,80	678.161,03	15.701.801,83	0,00	553.122,40	553.122,40	0,00	138.044,98	138.044,98
17-ene.-25	14.792.842,23	647.522,82	15.440.365,05	0,00	553.122,40	553.122,40	0,00	138.044,98	138.044,98
17-abr.-25	14.399.378,61	603.934,51	15.003.313,12	0,00	541.098,00	541.098,00	0,00	135.044,00	135.044,00
17-jul.-25	14.224.324,90	581.598,95	14.805.923,85	0,00	547.110,20	547.110,20	0,00	136.544,49	136.544,49
17-oct.-25	14.037.685,86	558.982,01	14.596.667,87	0,00	553.122,40	553.122,40	0,00	138.044,98	138.044,98
19-ene.-26	13.804.931,59	530.354,49	14.335.286,08	0,00	553.122,40	553.122,40	0,00	138.044,98	138.044,98
17-abr.-26	13.438.656,56	491.284,20	13.929.940,76	0,00	541.098,00	541.098,00	0,00	135.044,00	135.044,00
17-jul.-26	13.255.396,99	469.634,91	13.725.031,89	0,00	547.110,20	547.110,20	0,00	136.544,49	136.544,49
19-oct.-26	13.071.257,45	447.763,56	13.519.021,00	0,00	553.122,40	553.122,40	0,00	138.044,98	138.044,98
18-ene.-27	12.854.623,11	421.106,91	13.275.730,02	0,00	553.122,40	553.122,40	0,00	138.044,98	138.044,98
19-abr.-27	12.518.521,47	386.307,44	12.904.828,90	0,00	541.098,00	541.098,00	0,00	135.044,00	135.044,00
19-jul.-27	12.337.847,40	365.347,80	12.703.195,20	0,00	547.110,20	547.110,20	0,00	136.544,49	136.544,49
18-oct.-27	12.155.252,52	344.201,62	12.499.454,14	0,00	553.122,40	553.122,40	0,00	138.044,98	138.044,98
17-ene.-28	11.945.849,82	319.413,01	12.265.262,83	0,00	553.122,40	553.122,40	0,00	138.044,98	138.044,98
17-abr.-28	11.674.428,81	291.844,36	11.966.273,17	0,00	547.110,20	547.110,20	0,00	136.544,49	136.544,49
17-jul.-28	11.465.200,70	268.295,09	11.733.495,79	0,00	547.110,20	547.110,20	0,00	136.544,49	136.544,49
17-oct.-28	11.284.248,38	247.862,02	11.532.110,41	0,00	553.122,40	553.122,40	0,00	138.044,98	138.044,98
17-ene.-29	11.063.636,22	224.849,68	11.288.485,90	0,00	553.122,40	553.122,40	0,00	138.044,98	138.044,98
17-abr.-29	10.759.708,67	197.889,69	10.957.598,36	0,00	541.098,00	541.098,00	0,00	135.044,00	135.044,00
17-jul.-29	10.595.628,89	178.384,34	10.774.013,23	0,00	547.110,20	547.110,20	0,00	136.544,49	136.544,49
17-oct.-29	10.402.003,56	158.736,59	10.560.740,14	0,00	553.122,40	553.122,40	0,00	138.044,98	138.044,98
17-ene.-30	10.179.404,42	137.523,43	10.316.927,86	0,00	553.122,40	553.122,40	0,00	138.044,98	138.044,98
17-abr.-30	9.896.964,68	114.225,88	10.011.190,57	0,00	541.098,00	541.098,00	0,00	135.044,00	135.044,00
17-jul.-30	9.743.309,11	95.531,23	9.838.840,35	0,00	547.110,20	547.110,20	0,00	136.544,49	136.544,49
17-oct.-30	9.553.964,94	76.711,17	9.630.676,11	0,00	553.122,40	553.122,40	0,00	138.044,98	138.044,98
17-ene.-31	9.357.583,97	57.227,45	9.414.811,42	0,00	553.122,40	553.122,40	0,00	138.044,98	138.044,98
17-abr.-31	9.103.128,96	37.315,00	9.140.443,96	0,00	541.098,00	541.098,00	0,00	135.044,00	135.044,00
17-jul.-31	8.959.931,93	19.367,08	8.979.299,01	0,00	547.110,20	547.110,20	0,00	136.544,49	136.544,49
17-oct.-31	641.197,99	1.307,62	642.505,61	8.147.498,93	553.122,40	8.700.621,33	0,00	138.044,98	138.044,98
19-ene.-32	0,00	0,00	0,00	8.603.991,22	535.882,29	9.139.873,52	0,00	138.044,98	138.044,98
19-abr.-32	0,00	0,00	0,00	8.361.783,19	512.049,33	8.873.832,52	0,00	136.544,49	136.544,49
19-jul.-32	0,00	0,00	0,00	8.178.188,22	494.548,12	8.672.736,34	0,00	136.544,49	136.544,49
18-oct.-32	0,00	0,00	0,00	8.005.699,37	482.677,67	8.488.377,04	0,00	138.044,98	138.044,98
17-ene.-33	0,00	0,00	0,00	7.833.328,24	465.737,61	8.299.065,84	0,00	138.044,98	138.044,98
18-abr.-33	0,00	0,00	0,00	7.601.198,42	439.397,89	8.040.596,31	0,00	135.044,00	135.044,00
18-jul.-33	0,00	0,00	0,00	7.458.167,67	428.370,78	7.886.538,45	0,00	136.544,49	136.544,49
17-oct.-33	0,00	0,00	0,00	7.274.438,44	417.296,67	7.691.735,11	0,00	138.044,98	138.044,98
17-ene.-34	0,00	0,00	0,00	7.080.398,98	401.903,95	7.482.302,94	0,00	138.044,98	138.044,98
17-abr.-34	0,00	0,00	0,00	6.798.025,77	378.510,49	7.176.536,26	0,00	135.044,00	135.044,00
17-jul.-34	0,00	0,00	0,00	6.618.480,01	368.487,89	6.986.967,90	0,00	136.544,49	136.544,49
17-oct.-34	0,00	0,00	0,00	6.442.600,57	358.532,50	6.801.133,08	0,00	138.044,98	138.044,98
17-ene.-35	0,00	0,00	0,00	6.279.066,60	344.899,96	6.623.966,56	0,00	138.044,98	138.044,98
17-abr.-35	0,00	0,00	0,00	6.062.640,30	324.404,47	6.387.044,76	0,00	135.044,00	135.044,00
17-jul.-35	0,00	0,00	0,00	5.864.104,42	315.319,86	6.179.424,27	0,00	136.544,49	136.544,49
17-oct.-35	0,00	0,00	0,00	5.609.872,76	306.376,46	5.916.249,22	0,00	138.044,98	138.044,98
17-ene.-36	0,00	0,00	0,00	5.410.903,87	294.505,97	5.705.409,84	0,00	138.044,98	138.044,98
17-abr.-36	0,00	0,00	0,00	5.193.175,35	279.979,80	5.473.155,15	0,00	136.544,49	136.544,49
17-jul.-36	0,00	0,00	0,00	128.576.437,68	269.110,48	128.845.548,16	63.700.000,00	136.544,49	63.836.544,49