



## **F.T.H.: BANESTO 4**

**DESIREE PEREZ MONTORO**

**ANALYST**

**SANTANDER DE TITULIZACION, S.G.F.T, S.A.**

**CIUDAD GRUPO SANTANDER**

**28660 BOADILLA DEL MONTE**

**[desperez@gruposantander.com](mailto:desperez@gruposantander.com)**

**Tel: 912893278**



NAME OF THE FUND:

F.T.H.: BANESTO 4

INFORMATION AT:

QUARTER/SEMESTER:

June 15, 2010

-

September 15, 2010

YEAR:

2010

Acting on behalf of Santander de Titulización S.G.F.T., S.A. as General Manager:	Signature:
IGNACIO ORTEGA GAVARA - GENERAL MANAGER	

**I. DATA OF THE FUND**

Constitution Date	December 15, 2003	Paying Agent	BANESTO	
Disbursement Date	December 18, 2003	Negotiation Market	AIAF	
Final Date of Redemption	March 15, 2038	Ratings Agencies	STANDARD & POORS	
Management Company	SANTANDER DE TITULIZACION, S.G.F.T, S.A.	Rating	Initial	Current
Credit Rights's Seller	BANESTO	CLASS A	AAA	AAA
		CLASS B	A	A

## II. SECURITIES ISSUED CHARGED TO THE FUND: SECURITISATION BONDS

CLASS PRIORITY ISIN CODE	NUM BONDS	NOMINAL			
			Initial	Current	%Act/In
CLASS A ES0339774004	14.550	Nominal per Bond	100.000,00	29.667,39	
		Total Nominal	1.455.000.000,00	431.660.524,50	29,67 %
CLASS B ES0339774012	450	Nominal per Bond	100.000,00	95.924,55	
		Total Nominal	45.000.000,00	43.166.047,50	95,92 %

REDEMPTION AND INTEREST OF THE BONDS					
Current			Next		
Payment Date of the Current Period September 15, 2010			Next Payment Date December 15, 2010		
	Redemption of the Bonds	Gross Interest	Interest Rate	Gross Interest Next Coupon	Net Interest Next Coupon
CLASS A	975,26 €	71,97 €	1,0790 %	80,92 €	65,54 €
CLASS B	3.153,36 €	346,63 €	1,5290 %	370,75 €	300,30 €
Accrued amortisation due not payed	0,00 €				
Scheduled Amortisation	NO				

**III. ASSET PURCHASED BY THE FUND: CREDIT RIGHTS**

CREDIT RIGHTS	ISSUE DATE	CURRENT DATE
Numbre of CR's	19.736	9.260
CR's Outstanding to be amortised	1.500.001.687,69	474.826.508,96
CR's Outstanding per Loan to be amortised	76.003,33	51.277,16
Interest Rate	3,73 %	2,31 %

PREPAYMENT RATE	CURRENT SITUATION
Monthly Single Rate	730,00 %
Average Monthly Single Rate	765,00 %
Constant Prepayment Rate from Constitution	0,00 %

CURRENT DELINQUENCY	Up to 1 month	From 1 to 6 months	Greater than 6 months
Debt Due (Principal + Interest)	130.573,77	63.946,99	196.286,35
Debt to be amortised	0,00	0,00	474.681.144,87
Total Debt	130.573,77	63.946,99	474.877.431,22

**F.T.H.: BANESTO 4**

**QUARTERLY BONDS PAYOUT REPORT**

**September 15, 2010**

<b>BONDS. PRINCIPAL</b>	
Previous Balance	490.435.617,00 €
Principal Amortised	15.609.045,00 €
Outstanding Balance	474.826.572,00 €
% of Initial Balance	31,66 %
Principal accrued and unpaid	0,00 €

<b>INTEREST PAID</b>	
CLASS A	1.047.163,50 €
CLASS B	155.983,50 €
Interest accrued and unpaid	0,00 €

<b>DATA</b>	
Determination Date	September 08, 2010
Payment Date	September 15, 2010
Last Payment Date	June 15, 2010
Number of Days (Act/360)	92
Reference Interest Rate (%)	0,879 %
Next Payment Date	December 15, 2010

<b>RESIDUAL LIFE (YEARS)</b>		
	<b>INITIAL</b>	<b>September 15, 2010</b>
CLASS A	8,90	3,67
CLASS B	16,80	3,67

**F.T.H.: BANESTO 4**

**QUARTERLY COLLATERAL REPORT**

**September 15, 2010**

<b>PRINCIPAL</b>	
Previous Balance	490.435.636,36 €
Principal Amortised	15.609.127,40 €
Outstanding Balance	474.826.508,96 €
Number of Credit Rights	9.260
LTV	46,83%

<b>INTEREST</b>	
Interest received during relevant period	2.830.644,66 €
Interest accrued during relevant period	2.810.751,50 €

<b>PRINCIPAL BALANCE IN ARREARS</b>						
	<b>UP to 30 DAYS</b>	<b>30 to 60 DAYS</b>	<b>60 to 90 DAYS</b>	<b>90 to 180 DAYS</b>	<b>180 to 365 DAYS</b>	<b>&gt; 365 DAYS</b>
Principal Balance in Arrears	97.848,57 €	26.429,97 €	11.235,24 €	8.535,75 €	268,71 €	1.045,85 €
Interest accrued on Credit Rights in Arrears	32.725,20 €	10.297,57 €	4.566,55 €	2.881,91 €	164,86 €	286,17 €
Outstanding Balance	15.931.626,06 €	3.570.622,25 €	1.402.102,31 €	1.477.704,93 €	71.939,27 €	518.580,83 €
Number of Credit Rights	294	56	20	29	1	27
% of Outstanding Balance	3,36 %	0,75 %	0,30 %	0,31 %	0,02 %	0,11 %

<b>WRITE OFF</b>	
Cumulative WRITE OFF as of previous balance	668.001,83 €
Difference in Actual Period	-47.986,64 €
Cumulative WRITE OFF up to date	620.015,19 €

**F.T.H.: BANESTO 4**

**QUARTERLY COLLATERAL REPORT**

**September 15, 2010**

<b>CONTENTIOUS / JUDICIAL</b>	
Last balance	771.775,20 €
Difference in Actual Period	-253.194,37 €
Current balance	518.580,83 €

<b>NET LOSSES</b>	
Last balance	0,00 €
Difference in Actual Period	3.905,81 €
Current balance	3.905,81 €

<b>TRANSITORY PROPERTIES</b>	
Last balance	0,00 €
Difference in Actual Period	228.465,85 €
Current balance	228.465,85 €

**F.T.H.: BANESTO 4**

**QUARTERLY REPORT - ALLOCATION OF CASH**

September 15, 2010

TOTAL CASH RECEIVED END OF PERIOD	18.481.910,18 €
<b>CASH RECEIVED - PRINCIPAL</b>	
Amortisation of Credit Rights	14.884.352,94 €
<b>CASH RECEIVED - INTEREST</b>	
Interest received from Credit Rights	2.830.644,66 €
Interest received under GIC	76.748,15 €
<b>CONTENTIOUS</b>	82.021,69 €
<b>INCOMES/EXPENSES OF TRANSTORY PROPERTIES</b>	0,00 €
<b>RESERVE FUNDS</b>	0,00 €
<b>OTHERS</b>	608.142,74 €

TREASURY ACCOUNT STATEMENT	6.229.384,97 €
<b>PRINCIPAL RESERVE FUND</b>	
Previous Balance	4.904.356,36 €
Period utilization	156.091,27 €
Outstanding Balance	4.748.265,09 €
<b>PRINCIPAL RESERVE FUND</b>	
Previous Balance	1.492.826,73 €
Period utilization	11.706,85 €
Outstanding Balance	1.481.119,88 €
<b>WITHHOLDING TAXES</b>	0,00 €
<b>ISSUE EXPENSES WITHHELD</b>	0,00 €
<b>OTHERS</b>	0,00 €

TOTAL CASH PAID END OF PERIOD	18.481.910,18 €
Ordinary Expenses	6.326,22 €
SGFT Fee	30.904,16 €
Swap payment Class A	1.993.501,29 €
Swap collection Class A	-1.047.104,80 €
Interest paid to Bondholders Class A	1.047.163,50 €
Principal withholding Class A	14.190.033,00 €
Principal withholding Class B	1.419.012,00 €
Swap payment Class B	199.350,15 €
Swap collection Class B	-155.983,31 €
Interest paid to Bondholders Class B	155.983,50 €
Interest Subordinated Loan	29.031,61 €
Redemption Subordinated Loan	167.798,12 €
Fixed Fee	6.000,00 €
Variable Fee	607.692,86 €
Use of Principal and Secondary Reserve Fund	-167.798,12 €



**F.T.H.: BANESTO 4**

**CREDIT ENHACEMENT AND SUBORDINATED LOAN**

**September 15, 2010**

<b>CREDIT ENHACEMENT</b>		
<b>CONCEPTS</b>	<b>INITIAL</b>	<b>September 15, 2010</b>
SUBORDINATED ISSUE	3,00 %	9,09 %
PRINCIPAL RESERVE FUND	15.000.000,00 € (1,00 %)	4.748.265,09 € (1,00 %)
SECONDARY RESERVE FUND	2.250.000,00 € (0,15 %)	1.481.119,88 € (0,31 %)
ADDITIONAL MARGIN	0,65	0,65

<b>SUBORDINATED LOANS</b>		
<b>CONCEPTS</b>	<b>INITIAL</b>	<b>September 15, 2010</b>
SUBORDINATED LOAN A		
Total Outstanding Subordinated Loan	20.386.000,00 €	6.231.077,23 €
Interest Rate	3,10%	1,66%

## F.T.H.: BANESTO 4

### TRIGGERS OF THE MODEL

September 15, 2010

#### RESERVE FUND's TRIGGERS

1. IF 1.A) IS HIGHER THAN 1.B) THERE IS NO REDEMPTION PRINCIPAL AND SECONDARY RESERVE FUND:	
1.A) MP'S IN ARREARS OVER 90 DAYS	2.068.225,03 €
1.B) 2,5% MP'S OUTSTANDING BALANCE	11.870.662,72 €

THIS LEVEL HAS NOT BEEN REACHED. SO THE PRINCIPAL AND SECONDARY RESERVE FUND HAVE DECREASED.

#### BOND's TRIGGERS

1. IF 1.A) IS HIGHER OR EQUAL THAN 10% IT WILL BEGIN THE REDEMPTION OF CLASS B:	
1.A) OUSTANDING BALANCE CLASS B BONDS/ OUTSTANDING BALANCE CLASS A BONDS	10,00%

THIS LEVEL HAS BEEN REACHED, SO THE AMORTISATION OF CLASS B WILL CONTINUE.

#### BOND's TRIGGERS

1. IF 1.A) IS HIGHER THAN 1.B) THERE IS NO REDEMPTION OF CLASS B:	
1.A) MP'S IN ARREARS OVER 90 DAYS	2.068.225,03 €
1.B) 7% MP'S OUTSTANDING BALANCE	33.237.855,63 €

THIS LEVEL HAS NOT BEEN REACHED. SO CLASS B CONTINUE TO AMORTISATE.

## F.T.H.: BANESTO 4

### DEFINITIONS

September 15, 2010

**DETERMINATION DATE** Means the date in which the Gestora will carry out the necessary calculations, on behalf of the Fund, for the distribution of the available funds at this date, according with the Order of Priority of Payments.

All the information regarding the Assets (Outstanding Balance of the Credit Rights, arrears' tables, transitory properties, stratification tables, etc.) are referred to this mentioned date.

**WRITE OFF** Those loans that at a given date are unpaid for a period equal or higher to 12 or 18 months (according to Prospectus) of arrears in due payments.

**CONTENTIOUS / JUDICIAL** Loans in which the Originator will take legal actions. This amount is included in the bucket > 180 days in arrears.

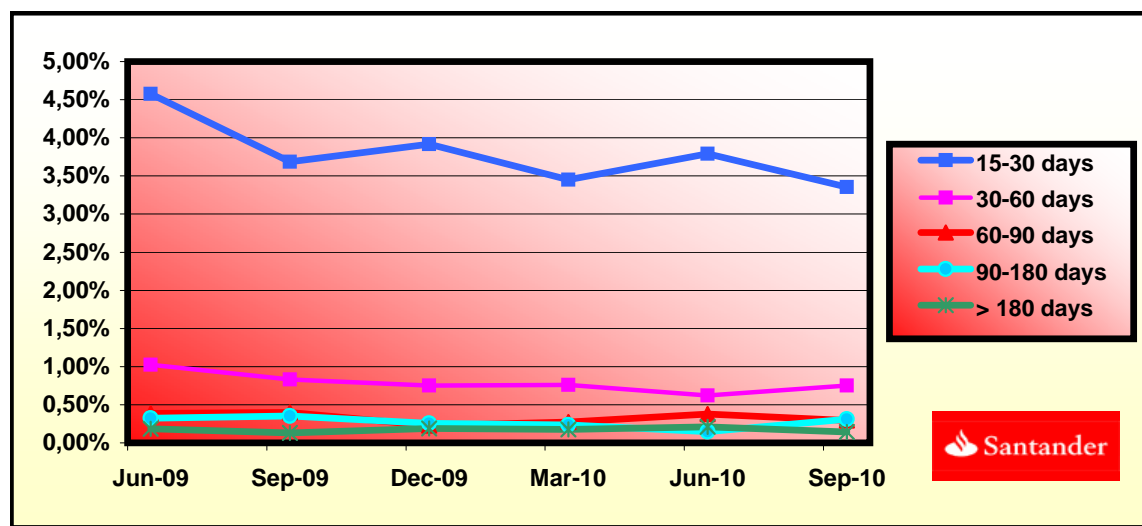
**NET LOSSES** Those loans which the Originator considers that will not recover (net of recoveries).

**TRANSITORY PROPERTIES** Those assets in the balance of the Fund as a consequence of a judicial or non-judicial process.

FONDO DE TITULIZACIÓN HIPOTECARIA  
BANESTO 4

HISTORICAL ARREARS REPORT  
SEPTEMBER 15TH, 2010

Date	Jun-09	Sep-09	Dec-09	Mar-10	Jun-10	Sep-10
15-30 days	4,577%	3,686%	3,919%	3,453%	3,793%	3,355%
30-60 days	1,026%	0,833%	0,752%	0,760%	0,622%	0,752%
60-90 days	0,388%	0,397%	0,229%	0,274%	0,378%	0,295%
90-180 days	0,323%	0,354%	0,257%	0,233%	0,148%	0,311%
> 180 days	0,184%	0,132%	0,190%	0,177%	0,209%	0,143%



**FONDO DE TITULIZACIÓN HIPOTECARIA  
BANESTO 4**

**LTV  
SEPTEMBER 15TH, 2010**

<b>LTV (%)</b>	<b>OUTS. BALANC</b>	<b>% OUTSTANDING</b>	<b>LOANS</b>	<b>% LOANS</b>
0,00 - 9,99	7.658,02	1,60%	847	9,14%
10,00 - 19,99	23.382,61	4,91%	1.009	10,89%
20,00 - 29,99	48.984,39	10,28%	1.273	13,74%
30,00 - 39,99	67.906,69	14,26%	1.311	14,15%
40,00 - 49,99	94.099,47	19,76%	1.480	15,98%
50,00 - 59,99	119.722,89	25,14%	1.765	19,06%
60,00 - 69,99	113.495,22	23,83%	1.565	16,90%
70,00 - 79,99	396,99	0,08%	6	0,06%
>80	432,85	0,09%	4	0,04%

BANESTO 4

DATE	OUTSTANDING BEFORE PREPAYMENT	REAL OUTSTANDING	PREPAYMENT VECTOR	REMAINING AT THE END OF THE MONTH	AVERAGE SINGLE MONTHLY MORTALITY	CPR	MONTHLY SINGLE MONTHLY MORTALITY	CPR	OUTSTANDING AFTER PREPAYMENT
			1,05%					7,65%	
	1.500.000.000,0		100,00%	100,00%					1.500.000.000,00
8-ene-04	1.495.729.806,1	1.484.079.397,59	98,95%	99,22%	0,78%	8,96%	0,78%	8,96%	1.480.043.656,01
8-feb-04	1.491.447.086,3	1.467.151.720,99	97,91%	98,37%	0,82%	9,38%	0,86%	9,81%	1.460.328.648,51
8-mar-04	1.487.151.803,8	1.448.706.233,63	96,89%	97,41%	0,87%	9,95%	0,97%	11,06%	1.440.852.203,45
8-abr-04	1.482.843.921,9	1.425.170.063,73	95,87%	96,11%	0,99%	11,22%	1,34%	14,93%	1.421.611.577,73
8-may-04	1.478.523.403,5	1.407.660.576,34	94,87%	95,21%	0,98%	11,12%	0,94%	10,71%	1.402.604.058,84
8-jun-04	1.474.190.211,6	1.386.380.191,70	93,87%	94,04%	1,02%	11,56%	1,22%	13,72%	1.383.826.964,52
8-jul-04	1.469.844.309,0	1.362.533.521,59	92,89%	92,70%	1,08%	12,19%	1,43%	15,87%	1.365.277.642,46
8-ago-04	1.465.485.658,4	1.344.717.088,04	91,91%	91,76%	1,07%	12,10%	1,01%	11,51%	1.346.953.469,55
8-sep-04	1.461.114.222,4	1.335.244.439,02	90,95%	91,39%	1,00%	11,32%	0,41%	4,78%	1.328.851.853,55
8-oct-04	1.456.729.963,5	1.314.658.386,81	89,99%	90,25%	1,02%	11,59%	1,25%	13,96%	1.310.970.228,80
8-nov-04	1.452.332.844,2	1.295.869.428,02	89,05%	89,23%	1,03%	11,69%	1,13%	12,76%	1.293.306.059,85
8-dic-04	1.447.922.826,6	1.276.785.759,00	88,12%	88,18%	1,04%	11,82%	1,17%	13,20%	1.275.856.839,21
8-ene-05	1.443.499.873,0	1.249.470.515,43	87,19%	86,56%	1,10%	12,48%	1,84%	19,97%	1.258.620.087,39
8-feb-05	1.439.063.945,4	1.230.544.342,13	86,28%	85,51%	1,11%	12,56%	1,21%	13,60%	1.241.593.352,62
8-mar-05	1.434.615.005,7	1.212.858.606,52	85,37%	84,54%	1,11%	12,57%	1,13%	12,76%	1.224.774.210,53
8-abr-05	1.430.153.015,9	1.189.310.534,68	84,48%	83,16%	1,15%	12,92%	1,64%	17,95%	1.208.160.263,88
8-may-05	1.425.677.937,5	1.168.642.127,52	83,59%	81,97%	1,16%	13,09%	1,43%	15,87%	1.191.749.142,20
8-jun-05	1.421.189.732,2	1.147.357.322,96	82,72%	80,73%	1,18%	13,30%	1,51%	16,70%	1.175.538.501,59
8-jul-05	1.416.689.801,4	1.125.227.264,58	81,85%	79,43%	1,20%	13,54%	1,62%	17,77%	1.159.527.202,85
8-ago-05	1.412.176.670,8	1.104.796.032,79	80,99%	78,23%	1,22%	13,70%	1,50%	16,61%	1.143.711.754,40
8-sep-05	1.407.650.301,7	1.090.810.910,79	80,14%	77,49%	1,21%	13,56%	0,95%	10,81%	1.128.089.890,42
8-oct-05	1.403.110.655,3	1.071.533.241,87	79,30%	76,37%	1,22%	13,68%	1,45%	16,07%	1.112.659.370,46
8-nov-05	1.398.557.692,5	1.053.644.931,75	78,47%	75,34%	1,22%	13,74%	1,35%	15,04%	1.097.417.979,16
8-dic-05	1.393.991.374,4	1.036.110.993,49	77,64%	74,33%	1,23%	13,79%	1,34%	14,97%	1.082.363.525,98
8-ene-06	1.389.419.729,0	1.012.469.118,85	76,83%	72,87%	1,26%	14,09%	1,96%	21,15%	1.067.500.042,98
8-feb-06	1.384.834.673,4	996.130.174,83	76,02%	71,93%	1,26%	14,11%	1,29%	14,41%	1.052.819.078,37
8-mar-06	1.380.236.168,2	978.998.721,89	75,23%	70,93%	1,26%	14,16%	1,39%	15,49%	1.038.318.515,95
8-abr-06	1.375.624.174,2	957.444.508,38	74,44%	69,60%	1,29%	14,39%	1,87%	20,31%	1.023.996.263,27
8-may-06	1.370.998.651,6	935.849.620,04	73,66%	68,26%	1,31%	14,62%	1,93%	20,81%	1.009.850.251,33
8-jun-06	1.366.359.560,8	919.799.144,84	72,89%	67,32%	1,31%	14,64%	1,38%	15,37%	995.878.434,35
8-jul-06	1.361.716.074,1	902.616.654,99	72,12%	66,29%	1,32%	14,72%	1,53%	16,93%	982.085.433,32
8-ago-06	1.357.058.966,5	887.671.015,19	71,36%	65,41%	1,32%	14,72%	1,32%	14,72%	968.462.484,22
8-sep-06	1.352.388.198,0	877.497.210,61	70,62%	64,89%	1,30%	14,55%	0,80%	9,24%	955.007.611,00
8-oct-06	1.347.703.728,6	863.203.424,90	69,88%	64,05%	1,30%	14,55%	1,29%	14,40%	941.718.859,80
8-nov-06	1.343.005.518,1	849.769.844,98	69,14%	63,27%	1,30%	14,52%	1,21%	13,61%	928.594.298,70
8-dic-06	1.338.293.526,2	837.627.577,62	68,42%	62,59%	1,29%	14,46%	1,08%	12,24%	915.632.017,50
8-ene-07	1.333.579.740,2	821.156.807,85	67,70%	61,58%	1,30%	14,55%	1,62%	17,80%	902.838.270,26
8-feb-07	1.328.852.127,0	807.849.960,06	66,99%	60,79%	1,30%	14,54%	1,27%	14,22%	890.202.899,47
8-mar-07	1.324.110.646,2	797.164.189,97	66,29%	60,20%	1,29%	14,46%	0,97%	11,03%	877.724.060,61
8-abr-07	1.319.355.257,1	784.899.478,92	65,59%	59,49%	1,29%	14,43%	1,18%	13,31%	865.399.929,88
8-may-07	1.314.585.918,8	774.269.957,25	64,90%	58,90%	1,28%	14,35%	1,00%	11,32%	853.228.704,01
8-jun-07	1.309.802.590,5	761.413.798,53	64,22%	58,13%	1,28%	14,36%	1,30%	14,54%	841.208.600,00
8-jul-07	1.305.026.174,7	751.728.622,28	63,55%	57,60%	1,27%	14,27%	0,91%	10,40%	829.351.164,74
8-ago-07	1.300.235.748,2	739.057.358,43	62,88%	56,84%	1,28%	14,28%	1,32%	14,77%	817.641.104,77
8-sep-07	1.295.431.269,7	732.073.694,96	62,22%	56,51%	1,26%	14,12%	0,58%	6,71%	806.076.699,90
8-oct-07	1.290.612.698,1	723.311.440,76	61,57%	56,04%	1,25%	14,02%	0,83%	9,50%	794.656.249,29
8-nov-07	1.285.779.992,1	713.797.327,86	60,93%	55,51%	1,24%	13,95%	0,94%	10,76%	783.378.071,29
8-dic-07	1.280.933.110,0	703.726.928,14	60,29%	54,94%	1,24%	13,91%	1,04%	11,77%	772.240.503,14
8-ene-08	1.276.097.465,1	692.501.801,57	59,66%	54,27%	1,24%	13,90%	1,22%	13,72%	761.257.085,83
8-feb-08	1.271.247.635,6	682.597.529,30	59,03%	53,70%	1,24%	13,86%	1,05%	11,94%	750.410.734,49
8-mar-08	1.266.383.580,0	674.784.360,80	58,41%	53,28%	1,23%	13,77%	0,76%	8,80%	739.699.845,71
8-abr-08	1.261.505.256,4	666.887.365,44	57,80%	52,86%	1,22%	13,68%	0,79%	9,06%	729.122.834,17
8-may-08	1.256.612.623,1	657.598.455,52	57,19%	52,33%	1,21%	13,64%	1,01%	11,46%	718.678.132,41
8-jun-08	1.251.705.638,1	649.214.906,47	56,59%	51,87%	1,21%	13,57%	0,89%	10,15%	708.364.190,65
8-jul-08	1.246.802.962,2	640.879.249,01	56,00%	51,40%	1,20%	13,52%	0,90%	10,24%	698.189.949,98
8-ago-08	1.241.885.905,1	632.598.643,02	55,41%	50,94%	1,20%	13,46%	0,90%	10,29%	688.143.232,74
8-sep-08	1.236.954.424,7	628.100.742,93	54,83%	50,78%	1,18%	13,30%	0,32%	3,72%	678.222.543,64
8-oct-08	1.232.008.478,6	621.324.955,67	54,26%	50,43%	1,17%	13,21%	0,68%	7,88%	668.426.404,23
8-nov-08	1.227.048.024,3	612.860.763,31	53,69%	49,95%	1,17%	13,17%	0,96%	10,97%	658.753.352,77
8-dic-08	1.222.073.019,4	606.876.935,25	53,12%	49,66%	1,16%	13,06%	0,57%	6,67%	649.201.944,03
8-ene-09	1.217.102.929,6	597.493.961,35	52,57%	49,09%	1,16%	13,06%	1,14%	12,90%	639.781.003,90
8-feb-09	1.212.118.260,9	591.367.944,22	52,01%	48,79%	1,15%	12,97%	0,62%	7,17%	630.478.679,50
8-mar-09	1.207.118.970,4	585.142.273,37	51,47%	48,47%	1,14%	12,88%	0,64%	7,45%	621.293.576,59
8-abr-09	1.202.105.015,4	577.748.914,69	50,93%	48,06%	1,14%	12,84%	0,85%	9,75%	612.234.316,67
8-may-09	1.197.076.352,7	570.507.383,42	50,40%	47,66%	1,13%	12,79%	0,84%	9,61%	603.269.536,84
8-jun-09	1.192.032.939,4	563.639.568,08	49,87%	47,28%	1,13%	12,73%	0,79%	9,03%	594.427.889,62
8-jul-09	1.187.001.678,5	557.414.616,57	49,34%	46,96%	1,12%	12,66%	0,69%	7,92%	585.711.339,18
8-ago-09	1.181.955.659,2	548.775.204,77	48,83%	46,43%	1,12%	12,66%	1,13%	12,74%	577.105.031,64
8-sep-09	1.176.894.838,3	542.660.310,28	48,31%	46,11%	1,12%	12,60%	0,69%	7,96%	568.607.668,03
8-oct-09	1.171.819.172,3	537.877.932,71	47,81%	45,90%	1,11%	12,50%	0,45%	5,29%	560.217.964,10
8-nov-09	1.166.728.617,7	531.749.083,76	47,31%	45,58%	1,10%	12,44%	0,71%	8,17%	551.934.650,12
8-dic-09	1.161.623.130,8	524.952.114,77	46,81%	45,19%	1,10%	12,40%	0,84%	9,67%	543.756.470,76
8-ene-10	1.156.526.758,4	517.716.841,13	46,32%	44,76%	1,09%	12,38%	0,94%	10,75%	535.693.343,44
8-feb-10	1.151.415.436,6	511.047.936,00	45,83%	44,38%	1,09%	12,34%	0,85%	9,74%	527.732.680,91
8-mar-10	1.146.289.121,6	507.146.460,29	45,35%	44,24%	1,08%	12,23%	0,32%	3,77%	519.873.272,81
8-abr-10	1.141.147.769,4	502.452.412,77	44,88%	44,03%	1,07%	12,15%	0,48%	5,60%	512.113.922,48
8-may-10	1.135.991.335,9	496.429.141,96	44,41%	43,70%	1,07%	12,10%	0,75%	8,64%	504.453.446,83
8-jun-10	1.130.819.776,8	490.435.636,36	43,94%	43,37%	1,07%	12,06%	0,76%	8,70%	496.890.676,20
8-jul-10	1.125.671.623,6	484.523.332,70	43,48%	43,04%	1,06%	12,02%	0,75%	8,68%	489.441.226,91
8-ago-10	1.120.508.369,1	480.054.115,27	43,02%	42,84%	1,05%	11,94%	0,47%	5,45%	482.086.879,87
8-sep-10	1.115.329.969,1	474.826.508,96	42,57%	42,57%	1,05%	11,88%	0,63%	7,30%	474.826.508,96

DEAL  
 MEZZ. DECLINN  
 MEZZ. STOPS DECLINN  
 VIDA RESIDUAL DESDE

1.500.000.000  
 10%  
 1%  
 8-sep-10

DATE	PRINCIPAL AVAILABLE	SENIOR NOTES	MEZZANIE NOTES	CLASS A PRINCIPAL	AVERAGE LIFE CLASS A	CLASS B PRINCIPAL	AVERAGE LIFE CLASS B
					3,67		3,67
8-ene-04	0	1.455.000.000	45.000.000	0	0	0	0
8-feb-04	1 0	1.455.000.000	45.000.000	0	0	0	0
8-mar-04	1 59.147.797	1.455.000.000	45.000.000	59.147.797	-140.476.016.801	0	0
8-abr-04	1 0	1.395.852.203	45.000.000	0	0	0	0
8-may-04	1 0	1.395.852.203	45.000.000	0	0	0	0
8-jun-04	1 57.025.239	1.395.852.203	45.000.000	57.025.239	-130.188.620.480	0	0
8-jul-04	1 0	1.338.826.965	45.000.000	0	0	0	0
8-ago-04	1 0	1.338.826.965	45.000.000	0	0	0	0
8-sep-04	1 54.975.111	1.338.826.965	45.000.000	54.975.111	-120.450.468.128	0	0
8-oct-04	1 0	1.283.851.854	45.000.000	0	0	0	0
8-nov-04	1 0	1.283.851.854	45.000.000	0	0	0	0
8-dic-04	1 52.995.014	1.283.851.854	45.000.000	52.995.014	-111.289.530.132	0	0
8-ene-05	1 0	1.230.856.839	45.000.000	0	0	0	0
8-feb-05	1 0	1.230.856.839	45.000.000	0	0	0	0
8-mar-05	1 51.082.629	1.230.856.839	45.000.000	51.082.629	-102.676.083.635	0	0
8-abr-05	1 0	1.179.774.211	45.000.000	0	0	0	0
8-may-05	1 0	1.179.774.211	45.000.000	0	0	0	0
8-jun-05	1 49.235.709	1.179.774.211	45.000.000	49.235.709	-94.434.089.758	0	0
8-jul-05	1 0	1.130.538.502	45.000.000	0	0	0	0
8-ago-05	1 0	1.130.538.502	45.000.000	0	0	0	0
8-sep-05	1 47.448.611	1.130.538.502	45.000.000	47.448.611	-86.641.163.986	0	0
8-oct-05	1 0	1.083.089.890	45.000.000	0	0	0	0
8-nov-05	1 0	1.083.089.890	45.000.000	0	0	0	0
8-dic-05	1 45.726.364	1.083.089.890	45.000.000	45.726.364	-79.335.242.301	0	0
8-ene-06	1 0	1.037.363.526	45.000.000	0	0	0	0
8-feb-06	1 0	1.037.363.526	45.000.000	0	0	0	0
8-mar-06	1 44.045.010	1.037.363.526	45.000.000	44.045.010	-72.454.041.509	0	0
8-abr-06	1 0	993.318.516	45.000.000	0	0	0	0
8-may-06	1 0	993.318.516	45.000.000	0	0	0	0
8-jun-06	1 42.440.082	993.318.516	45.000.000	42.440.082	-65.909.446.724	0	0
8-jul-06	1 0	950.878.434	45.000.000	0	0	0	0
8-ago-06	1 0	950.878.434	45.000.000	0	0	0	0
8-sep-06	1 40.870.823	950.878.434	45.000.000	40.870.823	-59.712.272.917	0	0
8-oct-06	1 0	910.007.611	45.000.000	0	0	0	0
8-nov-06	1 0	910.007.611	45.000.000	0	0	0	0
8-dic-06	1 39.375.593	910.007.611	45.000.000	39.375.593	-53.944.563.088	0	0
8-ene-07	1 0	870.632.018	45.000.000	0	0	0	0
8-feb-07	1 0	870.632.018	45.000.000	0	0	0	0
8-mar-07	1 37.907.957	870.632.018	45.000.000	37.907.957	-48.522.184.820	0	0
8-abr-07	1 0	832.724.061	45.000.000	0	0	0	0
8-may-07	1 0	832.724.061	45.000.000	0	0	0	0
8-jun-07	1 36.515.461	832.724.061	45.000.000	36.515.461	-43.380.367.209	0	0
8-jul-07	1 0	796.208.600	45.000.000	0	0	0	0
8-ago-07	1 0	796.208.600	45.000.000	0	0	0	0
8-sep-07	1 35.131.900	796.208.600	45.000.000	35.131.900	-38.504.562.511	0	0
8-oct-07	1 0	761.076.700	45.000.000	0	0	0	0
8-nov-07	1 0	761.076.700	45.000.000	0	0	0	0
8-dic-07	1 33.836.197	761.076.700	45.000.000	33.836.197	-34.005.377.735	0	0
8-ene-08	1 0	727.240.503	45.000.000	0	0	0	0
8-feb-08	1 0	727.240.503	45.000.000	0	0	0	0
8-mar-08	1 32.540.657	727.240.503	45.000.000	32.540.657	-29.742.160.895	0	0
8-abr-08	1 0	694.699.846	45.000.000	0	0	0	0
8-may-08	1 0	694.699.846	45.000.000	0	0	0	0
8-jun-08	1 31.335.655	694.699.846	45.000.000	31.335.655	-25.757.908.455	0	0
8-jul-08	1 0	663.364.191	45.000.000	0	0	0	0
8-ago-08	1 0	663.364.191	45.000.000	0	0	0	0
8-sep-08	1 30.141.647	663.364.191	45.000.000	30.141.647	-22.003.402.323	0	0
8-oct-08	1 0	633.222.544	45.000.000	0	0	0	0
8-nov-08	1 0	633.222.544	45.000.000	0	0	0	0
8-dic-08	1 29.020.600	633.222.544	45.000.000	29.020.600	-18.544.163.147	0	0
8-ene-09	1 0	604.201.944	45.000.000	0	0	0	0
8-feb-09	1 0	604.201.944	45.000.000	0	0	0	0
8-mar-09	1 27.908.367	604.201.944	45.000.000	27.908.367	-15.321.693.729	0	0
8-abr-09	1 0	576.293.577	45.000.000	0	0	0	0
8-may-09	1 0	576.293.577	45.000.000	0	0	0	0
8-jun-09	1 26.865.687	576.293.577	45.000.000	26.865.687	-12.277.618.943	0	0

DEAL  
 MEZZ. DECLINN  
 MEZZ. STOPS DECLINN  
 VIDA RESIDUAL DESDE

1.500.000.000  
 10%  
 1%  
 8-sep-10

DATE	PRINCIPAL AVAILABLE	SENIOR NOTES	MEZZANIE NOTES	CLASS A PRINCIPAL	AVERAGE LIFE CLASS A	CLASS B PRINCIPAL	AVERAGE LIFE CLASS B
8-jul-09	1 0	549.427.890	45.000.000	0	0	0	0
8-ago-09	1 0	549.427.890	45.000.000	0	0	0	0
8-sep-09	1 25.820.222	549.427.890	45.000.000	25.820.222	-9.424.380.879	0	0
8-oct-09	1 0	523.607.668	45.000.000	0	0	0	0
8-nov-09	1 0	523.607.668	45.000.000	0	0	0	0
8-dic-09	1 24.851.197	523.607.668	45.000.000	24.851.197	-6.809.228.053	0	0
8-ene-10	1 0	498.756.471	45.000.000	0	0	0	0
8-feb-10	1 0	498.756.471	45.000.000	0	0	0	0
8-mar-10	1 23.883.198	498.756.471	45.000.000	23.883.198	-4.394.508.422	0	0
8-abr-10	1 0	474.873.273	45.000.000	0	0	0	0
8-may-10	1 0	474.873.273	45.000.000	0	0	0	0
8-jun-10	1 22.982.597	474.873.273	45.000.000	22.982.597	-2.114.398.888	0	0
8-jul-10	1 0	451.890.676	45.000.000	0	0	0	0
8-ago-10	1 0	451.890.676	45.000.000	0	0	0	0
8-sep-10	1 22.064.167	451.890.676	45.000.000	20.230.214	0	1.833.954	0
8-oct-10	1 0	431.660.463	43.166.046	0	0	0	0
8-nov-10	1 0	431.660.463	43.166.046	0	0	0	0
8-dic-10	1 21.228.326	431.660.463	43.166.046	19.298.479	1.756.161.549	1.929.848	175.616.155
8-ene-11	1 0	412.361.984	41.236.198	0	0	0	0
8-feb-11	1 0	412.361.984	41.236.198	0	0	0	0
8-mar-11	1 20.366.459	412.361.984	41.236.198	18.514.963	3.351.208.303	1.851.496	335.120.830
8-abr-11	1 0	393.847.021	39.384.702	0	0	0	0
8-may-11	1 0	393.847.021	39.384.702	0	0	0	0
8-jun-11	1 19.591.374	393.847.021	39.384.702	17.810.340	4.862.222.898	1.781.034	486.222.290
8-jul-11	1 0	376.036.681	37.603.668	0	0	0	0
8-ago-11	1 0	376.036.681	37.603.668	0	0	0	0
8-sep-11	1 18.755.809	376.036.681	37.603.668	17.050.736	6.223.518.476	1.705.074	622.351.848
8-oct-11	1 0	358.985.945	35.898.595	0	0	0	0
8-nov-11	1 0	358.985.945	35.898.595	0	0	0	0
8-dic-11	1 18.039.148	358.985.945	35.898.595	16.399.226	7.478.046.839	1.639.923	747.804.684
8-ene-12	1 0	342.586.720	34.258.672	0	0	0	0
8-feb-12	1 0	342.586.720	34.258.672	0	0	0	0
8-mar-12	1 17.231.442	342.586.720	34.258.672	15.664.947	8.568.726.064	1.566.495	856.872.606
8-abr-12	1 0	326.921.773	32.692.177	0	0	0	0
8-may-12	1 0	326.921.773	32.692.177	0	0	0	0
8-jun-12	1 16.570.794	326.921.773	32.692.177	15.064.358	9.626.124.701	1.506.436	962.612.470
8-jul-12	1 0	311.857.415	31.185.741	0	0	0	0
8-ago-12	1 0	311.857.415	31.185.741	0	0	0	0
8-sep-12	1 15.828.568	311.857.415	31.185.741	14.389.607	10.518.802.912	1.438.961	1.051.880.291
8-oct-12	1 0	297.467.808	29.746.781	0	0	0	0
8-nov-12	1 0	297.467.808	29.746.781	0	0	0	0
8-dic-12	1 15.219.511	297.467.808	29.746.781	13.835.919	11.373.125.332	1.383.592	1.137.312.533
8-ene-13	1 0	283.631.889	28.363.189	0	0	0	0
8-feb-13	1 0	283.631.889	28.363.189	0	0	0	0
8-mar-13	1 14.535.792	283.631.889	28.363.189	13.214.356	12.051.492.698	1.321.436	1.205.149.270
8-abr-13	1 0	270.417.533	27.041.753	0	0	0	0
8-may-13	1 0	270.417.533	27.041.753	0	0	0	0
8-jun-13	1 13.974.348	270.417.533	27.041.753	12.703.952	12.754.768.300	1.270.395	1.275.476.830
8-jul-13	1 0	257.713.580	25.771.358	0	0	0	0
8-ago-13	1 0	257.713.580	25.771.358	0	0	0	0
8-sep-13	1 13.367.866	257.713.580	25.771.358	12.152.606	13.319.255.786	1.215.261	1.331.925.579
8-oct-13	1 0	245.560.974	24.556.097	0	0	0	0
8-nov-13	1 0	245.560.974	24.556.097	0	0	0	0
8-dic-13	1 12.849.114	245.560.974	24.556.097	11.681.012	13.865.361.617	1.168.101	1.386.536.162
8-ene-14	1 0	233.879.962	23.387.996	0	0	0	0
8-feb-14	1 0	233.879.962	23.387.996	0	0	0	0
8-mar-14	1 12.300.599	233.879.962	23.387.996	11.182.362	14.279.876.768	1.118.236	1.427.987.677
8-abr-14	1 0	222.697.600	22.269.760	0	0	0	0
8-may-14	1 0	222.697.600	22.269.760	0	0	0	0
8-jun-14	1 11.820.743	222.697.600	22.269.760	10.746.130	14.711.451.408	1.074.613	1.471.145.141
8-jul-14	1 0	211.951.470	21.195.147	0	0	0	0
8-ago-14	1 0	211.951.470	21.195.147	0	0	0	0
8-sep-14	1 11.321.131	211.951.470	21.195.147	10.291.937	15.036.520.661	1.029.194	1.503.652.066
8-oct-14	1 0	201.659.533	20.165.953	0	0	0	0
8-nov-14	1 0	201.659.533	20.165.953	0	0	0	0
8-dic-14	1 10.876.929	201.659.533	20.165.953	9.888.117	15.346.357.835	988.812	1.534.635.783
8-ene-15	1 0	191.771.416	19.177.142	0	0	0	0
8-feb-15	1 0	191.771.416	19.177.142	0	0	0	0
8-mar-15	1 10.404.846	191.771.416	19.177.142	9.458.951	15.531.597.227	945.895	1.553.159.723
8-abr-15	1 0	182.312.465	18.231.246	0	0	0	0
8-may-15	1 0	182.312.465	18.231.246	0	0	0	0
8-jun-15	1 9.994.256	182.312.465	18.231.246	9.085.687	15.754.581.085	908.569	1.575.458.108
8-jul-15	1 0	173.226.778	17.322.678	0	0	0	0
8-ago-15	1 0	173.226.778	17.322.678	0	0	0	0
8-sep-15	1 9.568.448	173.226.778	17.322.678	8.698.589	15.883.624.177	869.859	1.588.362.418
8-oct-15	1 0	164.528.188	16.452.819	0	0	0	0
8-nov-15	1 0	164.528.188	16.452.819	0	0	0	0
8-dic-15	1 9.188.444	164.528.188	16.452.819	7.735.625	14.829.192.714	1.452.819	2.785.053.725
8-ene-16	1 0	156.792.564	15.000.000	0	0	0	0
8-feb-16	1 0	156.792.564	15.000.000	0	0	0	0
8-mar-16	1 8.772.129	156.792.564	15.000.000	8.772.129	17.614.434.655	0	0
8-abr-16	1 0	148.020.435	15.000.000	0	0	0	0
8-may-16	1 0	148.020.435	15.000.000	0	0	0	0
8-jun-16	1 8.421.712	148.020.435	15.000.000	8.421.712	17.685.594.201	0	0
8-jul-16	1 0	139.598.723	15.000.000	0	0	0	0
8-ago-16	1 0	139.598.723	15.000.000	0	0	0	0
8-sep-16	1 154.598.723	139.598.723	15.000.000	139.598.723	306.000.401.522	15.000.000	32.880.000.000