



FONDO DE TITULIZACIÓN HIPOTECARIA BANESTO 1

**Desirée Pérez Montoro
Analyst
Santander de Titulización
Ciudad Grupo Santander
Ed. Encinar 28660 Boadilla del Monte
desperez@gruposantander.com
Tel: +34 91 289 32 78**



FONDO DE TITULIZACIÓN HIPOTECARIA

BANESTO 1

DATA OF THE FUND

Constitution Date	July 29th, 1999	Paying Agent	Banesto	
Disbursement Date	August 3th, 1999	Negotiation Market	AIAF	
Final Date of Redemption	February 18th, 2029	Ratings Agencies	Moody's	
Gestora	Santander de Titulización	Classification	Initial	Current
Seller MP's	Banesto	Class A	Aaa	Aaa
		Class B	A2	A2

SECURITIES ISSUED CHARGED TO THE FUND: SECURITISATION BONDS

CLASS PRIORITY	NUM BONDS	W.A.L	NOMINAL			
			ISIN CODE	INITIAL	ACTUAL	%Act/In
Class A (ISIN=ES0341221002)	7.324	0,24	Nominal per Bond	100.000,00	10.057,16	
			Total Nominal	732.400.000,00	73.658.639,84	10,06%
Class B (ISIN=ES0341221010)	266	0,24	Nominal per Bond	100.000,00	28.533,83	
			Total Nominal	26.600.000,00	7.589.998,78	28,53%

REDEMPTION AND INTEREST OF THE BONDS					
Current			Next		
Payment Date of the Actual Period February 18th, 2009			Next Payment Date May 18th, 2009		
	Redemption of the Bonds	Gross Interest	Interest Rate	Gross Interest Next Coupon	Net Interest Next Coupon
Class A	665,25 €	122,02 €	2,1870%	53,63 €	43,98 €
Class B	0,00 €	353,51 €	2,5874%	180,02 €	147,62 €
Bullet	0				

ASSET PURCHASED BY THE FUND: MORTGAGE PARTICIPATION

MORTGAGE PARTICIPACION	ISSUE DATE	CURRENT DATE
Number of MP's	18.269	3.896
MP's Outstanding to be amortised	759.000.019,00	81.248.612,51
MP's Outstanding per Loan to be amortised	41.545,79	20.854,37
Interest Rate	5,16%	6,15%

PREPAYMENT RATE	CURRENT DATE
Monthly Single Rate	8,68%
Average Monthly Single Rate	7,76%
Constant Prepayment Rate from Constitution	12,78%



**FONDO DE TITULIZACIÓN HIPOTECARIA
BANESTO 1**

**QUARTERLY BONDS PAYOUT REPORT
FEBRUARY 18TH, 2009**

BONDS. PRINCIPAL	
Previous Balance	86.120.929,62 €
Principal Amortised	4.872.291,00 €
Outstanding Balance	81.248.638,62 €
% of Initial Balance	10,70%
Principal Accrued not paid	0,00 €

CUMULATIVE INTEREST PAID	
Bond Holders as of Previous Payment Date	62.980.340,17 €
Interest paid on February 18th,2009	987.708,14 €
Cumulative interest paid to Bond to Bond Holders up to Date	63.968.048,31 €

DATA	
Determination Date	February 11th, 2009
Payment Date	February 18th, 2009
Last Payment Date	November 18th, 2008
Number of Days (Act/360)	92
3 Months Euribor(%)	1,927%
Next Payment Date	May 18th, 2009

RESIDUAL LIFE (YEARS)		
	August 3th, 1999	February 18th, 2009
Class A	5,2	0,24
Class B	8,7	0,24



**FONDO DE TITULIZACIÓN HIPOTECARIA
BANESTO 1**

**QUATERLY COLLATERAL REPORT
FEBRUARY 18TH, 2009**

PRINCIPAL	
Previous Balance	86.120.934,28 €
Principal Amortised	4.872.321,77 €
Outstanding Balance	81.248.612,51 €
Number of Mortgage Participations	3.896
LTV	34,75%

INTEREST	
Interest received during relevant period	1.293.095,09 €
Interest accrued during relevant period	1.159.025,31 €

PRINCIPAL BALANCE IN ARREARS					
PRINCIPAL BALANCE IN ARREARS	UP TO 30 DAYS	30 TO 60 DAYS	60 TO 90 DAYS	90 TO 180 DAYS	> 180 DAYS
Principal Balance in Arrears	30.090,46 €	7.214,07 €	2.966,24 €	3.071,17 €	8.529,30 €
Interest accrued on PH's in Arrears	11.899,81 €	4.076,10 €	1.820,48 €	1.500,53 €	717,80 €
Outstanding Balance	2.603.642,18 €	691.226,14 €	162.742,25 €	197.423,14 €	91.889,52 €
Number of Mortgage Participations	114	27	8	9	8
% of Outstanding Balance	3,20%	0,85%	0,20%	0,24%	0,11%

LEGAL	- €
	-

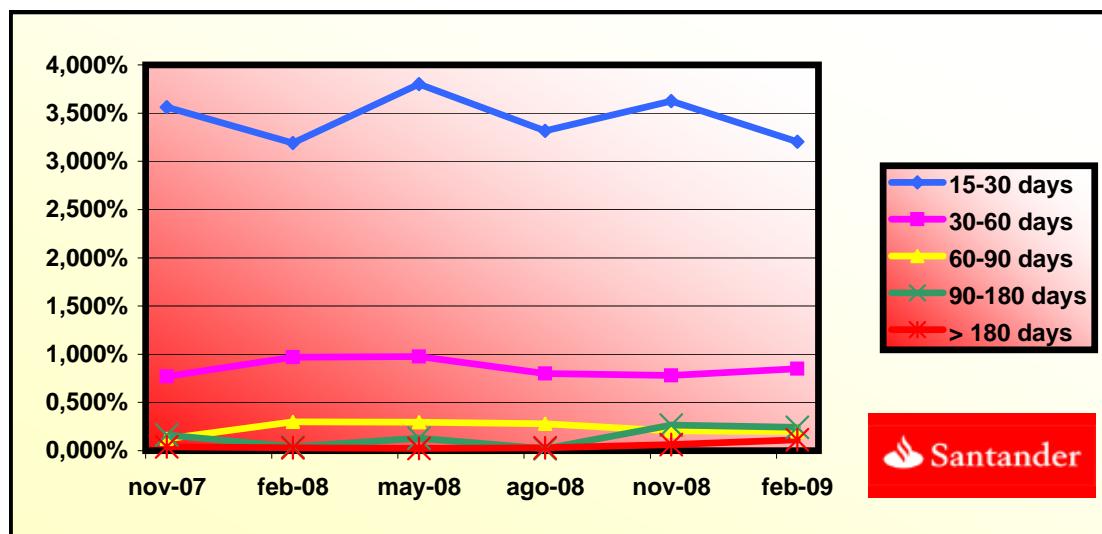
Legal: Loans in which the originator will take legal actions. This amount is included in the over 180 days in arrears bucket



FONDO DE TITULIZACIÓN HIPOTECARIA
BANESTO 1

HISTORICAL ARREARS REPORT
FEBRUARY 18TH, 2009

Data	Nov-07	Feb-08	May-08	Aug-08	Nov-08	Feb-09
15-30 days	3,561%	3,190%	3,800%	3,315%	3,624%	3,205%
30-60 days	0,771%	0,970%	0,976%	0,799%	0,782%	0,851%
60-90 days	0,122%	0,300%	0,294%	0,278%	0,207%	0,200%
90-180 days	0,163%	0,040%	0,130%	0,019%	0,264%	0,243%
> 180 days	0,041%	0,030%	0,024%	0,029%	0,064%	0,113%





**FONDO DE TITULIZACIÓN HIPOTECARIA
BANESTO 1**

**QUARTERLY REPORT - ALLOCATION OF CASH
FEBRUARY 18TH, 2009**

TOTAL CASH RECEIVED END OF PERIOD	6.256.030,14 €
a) CASH RECEIVED - PRINCIPAL	
Amortisation of MP's	4.832.853,84 €
b) CASH RECEIVED - INTEREST	
Interest received from MP's	1.293.095,09 €
Interest received under GIC	90.613,28 €
c) LEGAL	39.467,93 €

TREASURY ACCOUNT STATEMENT	4.874.916,75 €
a) RELATED TO THE RESERVE FUND	
1. Previous Balance	5.167.256,06 €
2. Period utilization	-292.339,31 €
3. Outstanding Balance	4.874.916,75 €

TOTAL CASH PAID END OF PERIOD	6.256.030,14 €
1. Current Expenses	5.789,77 €
2. Interest paid to Class A Bondholders	893.674,48 €
3. Interest paid to Class B Bondholders	94.033,66 €
4.1 Redemption BTH's A	4.872.291,00 €
4.2 Redemption BTH's A	0,00 €
5. Interest paid on Subordinated Loan A	55.018,06 €
6. Interest paid on Subordinated Loan B	0,00 €
7. Repayment of Subordinated Loan A	292.339,31 €
8. Repayment of Subordinated Loan B	0,00 €
9. Fixed Fee in favour of Banesto	6.000,00 €
10. Variable Fee in favour Banesto	329.223,18 €
11. Utilizations of Principal and Secondary Resrve Fund	-292.339,31 €



FONDO DE TITULIZACIÓN HIPOTECARIA
BANESTO 1

CREDIT ENHACEMENT AND SUBORDINATED LOAN
FEBRUARY 18TH, 2009

CREDIT ENHACEMENT		
CONCEPTS	August 3th, 1999	February 18th, 2009
Subordinated Issue	3,50%	9,34%
Reserve Fund	18.975.000€ (2,50%)	4.874.916,75€ (6,00%)

SUBORDINATED LOAN		
CONCEPTS	August 3th, 1999	February 18th, 2009
Total Outstanding A	20.496.916,81 €	4.876.454,42 €
Total Outstanding B	1.414.873,97 €	0,00 €
Interest Rate A	2,73%	1,927%



**FONDO DE TITULIZACIÓN HIPOTECARIA
BANESTO 1**

**TRIGGERS
FEBRUARY 18TH, 2009**

TRIGGERS RESERVE FUND	
1. IF 1.a) IS HIGHER THAN 1.b) THERE IS NO REDEMPTION OF RESERVE FUND:	
1.a) MP'S IN ARREARS OVER 90 DAYS	289.312,66 €
1.b) 3% MP'S OUTSTANDING BALANCE	2.437.458,38 €
2. IF 2.a) IS LOWER THAN 2.b) THERE IS NO REDEMPTION OF RESERVE FUND:	
2.a) INTEREST RATE MP'S	6,15%
2.b) WEIGHTED AVERAGE RATE BONDS A AND B + 0,33%	4,88%
3. IF 3.a) IS HIGHER THAN 3.b) THERE IS NO REDEMPTION OF RESERVE FUND:	
3.a) WRITTE OFF	0,00 €
3.b) 0,025% INITIAL OUTSTANDING BALANCE MP'S * N° PAYMENT DATES	7.020.750,18 €

THESE LEVELS HAVE NOT BEEN REACHED, SO THE RESERVE FUND HAS DECREASED.

TRIGGERS BONDS	
1. IF 1.a) IS HIGHER THAN 1.b) THERE IS NO REDEMPTION OF CLASS B:	
1.a) MP'S IN ARREARS OVER 90 DAYS	289.312,66 €
1.b) 7% MP'S OUTSTANDING BALANCE	5.687.402,88 €

**THIS LEVEL HAS NOT BEEN REACHED. HOWEVER, CLASS B WON'T REDEMPT BECAUSE HAS BEEN REACHED
7.590.000€**



**FONDO DE TITULIZACIÓN HIPOTECARIA
BANESTO 1**

TRIGGERS
FEBRUARY 18TH, 2009

TRIGGERS EARLY REDEMPTION OF THE FUND	
1. IF 1.a) IS HIGHER THAN 1.b) THERE IS EARLY REDEMPTION OF THE FUND:	
1.a) 10% MP'S OUTSTANDING BALANCE	75.900.001,90 €
1.b) PRINCIPAL PENDING PAYMENT OF THE BONS	81.248.638,62 €

THIS LEVEL HAS NOT BEEN REACHED.



**FONDO DE TITULIZACIÓN HIPOTECARIA
BANESTO 1**

**LTV
FEBRUARY 18TH, 2009**

LTV (%)	OUTS. BALANC	% OUTSTANDING	LOANS	% LOANS
0,00 - 9,99	4.098,96	5,04%	737	18,91%
10,00 - 19,99	13.784,02	16,95%	1009	25,89%
20,00 - 29,99	16.242,25	19,98%	815	20,91%
30,00 - 39,99	13.899,33	17,09%	476	12,21%
40,00 - 49,99	17.000,70	20,91%	486	12,47%
50,00 - 59,99	13.200,28	16,23%	312	8,00%
60,00 - 69,99	2.646,95	3,25%	53	1,36%
70,00 - 79,99	37,00	0,04%	1	0,02%
>80	374,89	0,46%	7	0,17%

PREPAYMENTS - BANESTO 1

February -18th 2009

DATE	OUTSTANDING BEFORE PREPAYMENT	REAL OUTSTANDING	PREPAYMENT VECTOR	REMAINING AT THE END OF THE MONTH	AVERAGE SINGLE MONTHLY MORTALITY	CPR	MONTHLY SINGLE MONTHLY MORTALITY	CPR	OUTSTANDING AFTER PREPAYMENT	PRINCIPAL AVAILABLE
			1,13%					7,76%		
	759.000,02		100,00%	100,00%					759.000,000000	759.000,000000
sep-99	755.366,17	744.506,7	98,87%	98,56%	1,44%	15,95%	1,44%	15,95%	746.804,4	
oct-99	751.716,69	724.010,7	97,75%	96,31%	1,86%	20,17%	2,28%	24,18%	734.772,5	
nov-99	748.051,52	716.871,1	96,64%	95,83%	1,41%	15,66%	0,50%	5,85%	722.902,3	36.098
dic-99	744.370,59	706.796,1	95,54%	94,95%	1,29%	14,39%	0,92%	10,47%	711.191,6	
ene-00	740.674,95	696.426,4	94,46%	94,03%	1,22%	13,74%	0,98%	11,10%	699.639,7	
feb-00	736.963,42	689.571,8	93,39%	93,57%	1,10%	12,45%	0,49%	5,67%	688.243,4	34.659
mar-00	733.235,93	680.287,7	92,33%	92,78%	1,07%	12,06%	0,84%	9,68%	677.000,9	
abr-00	729.492,41	672.739,1	91,28%	91,22%	1,01%	11,44%	0,60%	6,99%	665.910,1	
may-00	725.732,80	666.330,6	90,25%	91,81%	0,94%	10,76%	0,44%	5,15%	654.969,3	33.274
jun-00	721.957,01	659.284,5	89,23%	91,32%	0,90%	10,32%	0,54%	6,29%	644.176,5	
jul-00	718.172,25	651.086,5	88,22%	90,66%	0,89%	10,15%	0,72%	8,34%	633.536,3	
ago-00	714.371,21	642.166,4	87,22%	89,89%	0,88%	10,11%	0,85%	9,68%	623.040,4	31.929
sep-00	710.553,83	623.658,7	86,23%	87,77%	1,00%	11,34%	2,36%	24,92%	612.686,9	
oct-00	706.720,03	616.983,1	85,25%	87,30%	0,97%	10,99%	0,53%	6,22%	602.474,1	
nov-00	702.869,74	609.181,2	84,28%	86,67%	0,95%	10,81%	0,72%	8,35%	592.400,2	30.640
dic-00	699.002,90	601.490,1	83,33%	86,05%	0,93%	10,66%	0,72%	8,27%	582.463,5	
ene-01	695.141,26	592.596,5	82,38%	85,25%	0,93%	10,65%	0,93%	10,62%	572.680,1	
feb-01	691.263,01	584.606,2	81,45%	84,57%	0,93%	10,57%	0,79%	9,13%	563.030,3	29.370
mar-01	687.368,09	577.868,5	80,53%	84,07%	0,91%	10,38%	0,59%	6,88%	553.512,1	
abr-01	683.456,42	570.372,4	79,61%	83,45%	0,90%	10,28%	0,73%	8,44%	544.124,1	
may-01	679.527,93	539.849,8	78,71%	79,44%	1,09%	12,32%	4,80%	44,61%	534.864,5	28.166
jun-01	675.582,55	533.640,9	77,82%	78,99%	1,07%	12,07%	0,57%	6,66%	525.731,8	
jul-01	671.656,44	526.278,4	76,94%	78,36%	1,05%	11,95%	0,80%	9,22%	516.752,3	
ago-01	667.713,46	519.242,9	76,06%	77,76%	1,04%	11,82%	0,75%	8,68%	507.895,9	26.969
sep-01	663.753,52	513.742,8	75,20%	77,40%	1,02%	11,57%	0,47%	5,48%	499.161,1	
oct-01	659.776,55	480.522,3	74,35%	72,83%	1,21%	13,61%	5,90%	51,81%	490.546,5	
nov-01	655.782,49	472.319,1	73,51%	72,02%	1,21%	13,57%	1,11%	12,52%	482.050,4	25.845
dic-01	651.771,24	465.247,6	72,67%	71,38%	1,20%	13,45%	0,89%	10,18%	473.671,4	
ene-02	647.781,02	457.234,1	71,85%	70,58%	1,19%	13,42%	1,12%	12,61%	465.435,5	
feb-02	643.773,63	449.737,6	71,04%	69,86%	1,19%	13,37%	1,03%	11,65%	457.313,3	24.737
mar-02	639.749,01	443.596,1	70,23%	69,34%	1,17%	13,22%	0,75%	8,58%	449.303,4	
abr-02	635.707,09	437.704,4	69,44%	68,85%	1,16%	13,06%	0,70%	8,09%	441.404,2	
may-02	631.647,79	423.430,0	68,65%	67,04%	1,20%	13,54%	2,64%	27,46%	433.614,4	23.699
jun-02	627.571,03	417.177,8	67,87%	66,47%	1,19%	13,42%	0,84%	9,59%	425.932,7	
jul-02	623.526,65	410.651,1	67,10%	65,86%	1,19%	13,34%	0,93%	10,56%	418.391,1	
ago-02	619.464,87	404.214,9	66,34%	65,25%	1,18%	13,26%	0,92%	10,52%	410.954,3	22.660
sep-02	615.385,64	399.061,8	65,59%	64,85%	1,16%	13,11%	0,62%	7,20%	403.620,8	
oct-02	611.288,85	393.346,1	64,84%	64,35%	1,15%	13,00%	0,77%	8,88%	396.389,4	
nov-02	607.174,46	388.135,0	64,11%	63,92%	1,14%	12,86%	0,66%	7,60%	389.258,8	21.696

PREPAYMENTS - BANESTO 1

February -18th 2009

DATE	OUTSTANDING BEFORE PREPAYMENT	REAL OUTSTANDING	PREPAYMENT VECTOR	REMAINING AT THE END OF THE MONTH	AVERAGE SINGLE MONTHLY MORTALITY	CPR	MONTHLY SINGLE MONTHLY MORTALITY	CPR	OUTSTANDING AFTER PREPAYMENT	PRINCIPAL AVAILABLE
			1,13%					7,76%		
dic-02	603.042,37	382.514,0	63,38%	63,43%	1,13%	12,77%	0,77%	8,89%	382.227,6	
ene-03	598.942,89	375.287,7	62,66%	62,66%	1,13%	12,79%	1,22%	13,67%	375.326,3	
feb-03	594.825,78	369.796,7	61,95%	62,17%	1,13%	12,70%	0,78%	8,98%	368.521,4	20.737
mar-03	590.690,97	363.315,7	61,25%	61,51%	1,12%	12,68%	1,06%	12,06%	361.811,7	
abr-03	586.538,38	357.354,6	60,56%	60,93%	1,12%	12,64%	0,94%	10,76%	355.196,0	
may-03	582.367,93	353.110,1	59,87%	60,63%	1,11%	12,49%	0,48%	5,61%	348.673,1	19.848
jun-03	578.179,55	346.745,8	59,19%	59,97%	1,11%	12,49%	1,09%	12,33%	342.241,8	
jul-03	574.043,22	341.533,4	58,52%	59,50%	1,10%	12,42%	0,79%	9,12%	335.942,0	
ago-03	569.889,11	336.072,3	57,86%	58,97%	1,09%	12,37%	0,88%	10,08%	329.730,8	18.942
sep-03	565.717,13	331.180,1	57,20%	58,54%	1,09%	12,29%	0,73%	8,41%	323.606,9	
oct-03	561.527,21	326.881,0	56,55%	58,21%	1,08%	12,18%	0,56%	6,54%	317.569,4	
nov-03	557.319,28	321.481,7	55,91%	57,68%	1,07%	12,14%	0,91%	10,38%	311.617,1	18.114
dic-03	553.093,25	315.840,9	55,28%	57,10%	1,07%	12,13%	1,00%	11,40%	305.748,9	
ene-04	548.912,04	309.562,7	54,65%	56,40%	1,07%	12,16%	1,24%	13,92%	299.998,2	
feb-04	544.712,84	304.432,4	54,03%	55,89%	1,07%	12,13%	0,90%	10,27%	294.328,9	17.288
mar-04	540.495,59	297.021,1	53,42%	54,95%	1,08%	12,25%	1,67%	18,33%	288.739,9	
abr-04	536.260,21	291.660,6	52,82%	54,39%	1,08%	12,23%	1,03%	11,67%	283.230,2	
may-04	532.006,61	286.886,9	52,22%	53,93%	1,08%	12,19%	0,85%	9,74%	277.798,8	16.530
jun-04	527.734,72	280.095,5	51,63%	53,08%	1,09%	12,28%	1,58%	17,37%	272.444,7	
jul-04	523.521,08	275.206,3	51,04%	52,57%	1,08%	12,26%	0,95%	10,87%	267.206,0	
ago-04	519.289,32	270.838,2	50,46%	52,16%	1,08%	12,21%	0,79%	9,03%	262.041,9	15.757
sep-04	515.039,36	267.426,6	49,89%	51,92%	1,07%	12,10%	0,44%	5,21%	256.951,5	
oct-04	510.771,12	261.261,4	49,32%	51,15%	1,08%	12,17%	1,49%	16,47%	251.933,8	
nov-04	506.484,54	256.789,6	48,77%	50,70%	1,07%	12,14%	0,88%	10,06%	246.987,9	15.054
dic-04	502.179,52	252.707,0	48,21%	50,32%	1,07%	12,08%	0,75%	8,60%	242.112,8	
ene-05	497.920,85	246.605,8	47,67%	49,53%	1,08%	12,17%	1,58%	17,39%	237.338,6	
feb-05	493.643,86	241.670,7	47,13%	48,96%	1,08%	12,18%	1,15%	12,98%	232.633,0	14.355
mar-05	489.348,49	237.217,4	46,59%	48,48%	1,07%	12,16%	0,98%	11,16%	227.994,9	
abr-05	485.034,64	232.487,1	46,06%	47,93%	1,08%	12,17%	1,12%	12,67%	223.423,6	
may-05	480.702,25	227.572,6	45,54%	47,34%	1,08%	12,19%	1,23%	13,82%	218.918,1	13.715
jun-05	476.351,23	222.315,3	45,03%	46,67%	1,08%	12,25%	1,42%	15,75%	214.477,7	
jul-05	472.056,00	217.116,0	44,51%	45,99%	1,09%	12,30%	1,45%	16,08%	210.134,7	
ago-05	467.742,31	212.578,7	44,01%	45,45%	1,09%	12,32%	1,19%	13,35%	205.854,5	13.064
sep-05	463.410,07	209.003,7	43,51%	45,10%	1,08%	12,27%	0,76%	8,78%	201.636,2	
oct-05	459.059,19	204.702,6	43,02%	44,59%	1,09%	12,28%	1,13%	12,74%	197.479,1	
nov-05	454.689,62	200.063,2	42,53%	44,00%	1,09%	12,31%	1,33%	14,81%	193.382,3	12.472
dic-05	450.301,25	195.722,0	42,05%	43,46%	1,09%	12,33%	1,22%	13,66%	189.345,2	
ene-06	446.026,52	190.309,7	41,57%	42,67%	1,10%	12,43%	1,83%	19,91%	185.421,9	
feb-06	441.733,41	185.936,4	41,10%	42,09%	1,10%	12,46%	1,35%	15,03%	181.555,8	11.827
mar-06	437.421,84	181.929,2	40,63%	41,59%	1,10%	12,48%	1,19%	13,39%	177.745,9	
abr-06	433.091,73	178.152,7	40,17%	41,14%	1,10%	12,48%	1,10%	12,40%	173.991,6	

PREPAYMENTS - BANESTO 1

February -18th 2009

DATE	OUTSTANDING BEFORE PREPAYMENT	REAL OUTSTANDING	PREPAYMENT VECTOR	REMAINING AT THE END OF THE MONTH	AVERAGE SINGLE MONTHLY MORTALITY	CPR	MONTHLY SINGLE MONTHLY MORTALITY	CPR	OUTSTANDING AFTER PREPAYMENT	PRINCIPAL AVAILABLE
			1,13%					7,76%		
may-06	428.743,00	156.690,7	39,72%	36,55%	1,24%	13,85%	11,15%	75,81%	170.292,3	11.264
jun-06	424.375,57	153.041,7	39,27%	36,06%	1,24%	13,87%	1,32%	14,78%	166.647,0	
jul-06	420.174,12	149.697,0	38,82%	35,63%	1,24%	13,86%	1,21%	13,56%	163.127,0	
ago-06	415.954,60	146.459,3	38,38%	35,21%	1,23%	13,85%	1,17%	13,17%	159.658,4	10.634
sep-06	411.716,94	143.857,4	37,95%	34,94%	1,23%	13,80%	0,77%	8,81%	156.240,6	
oct-06	407.461,05	140.937,2	37,52%	34,59%	1,23%	13,77%	1,01%	11,43%	152.873,0	
nov-06	403.186,87	137.741,9	37,09%	34,16%	1,23%	13,77%	1,23%	13,81%	149.554,8	10.104
dic-06	398.894,30	134.799,2	36,67%	33,79%	1,23%	13,75%	1,08%	12,25%	146.285,5	
ene-07	394.765,61	131.451,2	36,26%	33,30%	1,23%	13,78%	1,46%	16,22%	143.130,4	
feb-07	390.619,17	128.676,5	35,85%	32,94%	1,23%	13,76%	1,07%	12,13%	140.021,8	9.533
mar-07	386.454,89	126.075,8	35,44%	32,62%	1,22%	13,73%	0,97%	10,99%	136.958,9	
abr-07	382.272,71	123.471,3	35,04%	32,30%	1,22%	13,71%	0,99%	11,30%	133.941,2	
may-07	378.072,54	120.888,4	34,64%	31,97%	1,22%	13,68%	1,00%	11,41%	130.968,0	9.054
jun-07	373.854,32	118.444,6	34,25%	31,68%	1,22%	13,65%	0,92%	10,45%	128.038,9	
jul-07	369.795,33	115.964,8	33,86%	31,36%	1,21%	13,63%	1,02%	11,57%	125.213,2	
ago-07	365.718,88	113.579,7	33,48%	31,06%	1,21%	13,60%	0,97%	10,99%	122.429,4	8.539
sep-07	361.624,91	111.659,1	33,10%	30,88%	1,20%	13,53%	0,58%	6,72%	119.686,7	
oct-07	357.513,33	109.441,2	32,72%	30,61%	1,20%	13,49%	0,86%	9,84%	116.984,7	
nov-07	353.384,07	107.216,2	32,35%	30,34%	1,20%	13,46%	0,89%	10,15%	114.322,9	8.106
dic-07	349.237,06	105.269,9	31,98%	30,14%	1,19%	13,40%	0,65%	7,52%	111.700,7	
ene-08	345.374,17	102.793,0	31,62%	29,76%	1,19%	13,41%	1,26%	14,12%	109.213,1	
feb-08	341.494,66	100.964,8	31,26%	29,57%	1,19%	13,36%	0,66%	7,67%	106.762,4	7.561
mar-08	337.598,48	98.952,0	30,91%	29,31%	1,18%	13,32%	0,86%	9,87%	104.348,0	
abr-08	333.685,54	97.403,2	30,56%	29,19%	1,18%	13,24%	0,41%	4,82%	101.969,5	
may-08	329.755,78	95.575,1	30,21%	28,98%	1,17%	13,20%	0,71%	8,17%	99.626,5	7.136
jun-08	325.809,12	93.936,8	29,87%	28,83%	1,17%	13,13%	0,52%	6,11%	97.318,4	
jul-08	322.315,43	92.198,4	29,53%	28,61%	1,16%	13,10%	0,79%	9,04%	95.183,6	
ago-08	318.806,72	90.460,1	29,20%	28,37%	1,16%	13,06%	0,81%	9,25%	93.080,3	6.546
sep-08	315.282,93	89.071,3	28,87%	28,25%	1,15%	12,99%	0,43%	5,09%	91.008,1	
oct-08	311.743,98	87.589,7	28,54%	28,10%	1,15%	12,93%	0,55%	6,37%	88.966,7	
nov-08	308.189,81	86.120,9	28,21%	27,94%	1,14%	12,88%	0,54%	6,33%	86.955,5	6.125
dic-08	304.620,37	84.553,4	27,90%	27,76%	1,14%	12,83%	0,67%	7,75%	84.974,2	
ene-09	301.308,07	82.779,7	27,58%	27,47%	1,14%	12,82%	1,02%	11,59%	83.097,5	
feb-09	297.981,53	81.248,6	27,27%	27,27%	1,13%	12,78%	0,75%	8,68%	81.248,6	5.707

DEAL
 MEZZ. DECLINN
 MEZZ. STOPS DECLINN
 VIDA RESIDUAL DESDE

759.000
 8,00%
 1,00%
11/02/09

DATE		PRINCIPAL AVAILABLE	SENIOR NOTES	MEZZANIE NOTES	CLASS A PRINCIPAL	AVERAGE LIFE CLASS A	CLASS B PRINCIPAL	AVERAGE LIFE CLASS B
						0,24		0,24
11/09/99		0	732.400.000	26.600.000	0	0	0	0
11/10/99	1	0	732.400.000	26.600.000	0	0	0	0
11/11/99	1	36.097.747	732.400.000	26.600.000	36.097.747	(122.010.386.084)	0	0
11/12/99	1	0	696.302.253	26.600.000	0	0	0	0
11/01/00	1	0	696.302.253	26.600.000	0	0	0	0
11/02/00	1	34.658.832	696.302.253	26.600.000	34.658.832	(113.958.238.877)	0	0
11/03/00	1	0	661.643.421	26.600.000	0	0	0	0
11/04/00	1	0	661.643.421	26.600.000	0	0	0	0
11/05/00	1	33.274.104	661.643.421	26.600.000	33.274.104	(106.410.585.630)	0	0
11/06/00	1	0	628.369.317	26.600.000	0	0	0	0
11/07/00	1	0	628.369.317	26.600.000	0	0	0	0
11/08/00	1	31.928.903	628.369.317	26.600.000	31.928.903	(99.171.173.376)	0	0
11/09/00	1	0	596.440.413	26.600.000	0	0	0	0
11/10/00	1	0	596.440.413	26.600.000	0	0	0	0
11/11/00	1	30.640.220	596.440.413	26.600.000	30.640.220	(92.349.622.692)	0	0
11/12/00	1	0	565.800.193	26.600.000	0	0	0	0
11/01/01	1	0	565.800.193	26.600.000	0	0	0	0
11/02/01	1	29.369.938	565.800.193	26.600.000	29.369.938	(85.818.958.105)	0	0
11/03/01	1	0	536.430.256	26.600.000	0	0	0	0
11/04/01	1	0	536.430.256	26.600.000	0	0	0	0
11/05/01	1	28.165.733	536.430.256	26.600.000	28.165.733	(79.793.521.371)	0	0
11/06/01	1	0	508.264.523	26.600.000	0	0	0	0
11/07/01	1	0	508.264.523	26.600.000	0	0	0	0
11/08/01	1	26.968.654	508.264.523	26.600.000	26.968.654	(73.921.081.349)	0	0
11/09/01	1	0	481.295.869	26.600.000	0	0	0	0
11/10/01	1	0	481.295.869	26.600.000	0	0	0	0
11/11/01	1	25.845.486	481.295.869	26.600.000	25.845.486	(68.464.693.066)	0	0
11/12/01	1	0	455.450.382	26.600.000	0	0	0	0
11/01/02	1	0	455.450.382	26.600.000	0	0	0	0
11/02/02	1	24.737.041	455.450.382	26.600.000	24.737.041	(63.252.613.895)	0	0
11/03/02	1	0	430.713.341	26.600.000	0	0	0	0
11/04/02	1	0	430.713.341	26.600.000	0	0	0	0
11/05/02	1	23.698.901	430.713.341	26.600.000	23.698.901	(58.488.887.643)	0	0
11/06/02	1	0	407.014.440	26.600.000	0	0	0	0
11/07/02	1	0	407.014.440	26.600.000	0	0	0	0
11/08/02	1	22.660.158	407.014.440	26.600.000	22.660.158	(53.840.535.243)	0	0
11/09/02	1	0	384.354.282	26.600.000	0	0	0	0
11/10/02	1	0	384.354.282	26.600.000	0	0	0	0
11/11/02	1	21.695.529	384.354.282	26.600.000	21.695.529	(49.552.589.169)	0	0
11/12/02	1	0	362.658.753	26.600.000	0	0	0	0
11/01/03	1	0	362.658.753	26.600.000	0	0	0	0
11/02/03	1	20.737.325	362.658.753	26.600.000	20.737.325	(45.456.217.254)	0	0
11/03/03	1	0	341.921.428	26.600.000	0	0	0	0
11/04/03	1	0	341.921.428	26.600.000	0	0	0	0
11/05/03	1	19.848.297	341.921.428	26.600.000	19.075.937	(40.116.694.631)	772.361	(1.624.274.603)
11/06/03	1	0	322.845.491	25.827.639	0	0	0	0
11/07/03	1	0	322.845.491	25.827.639	0	0	0	0
11/08/03	1	18.942.378	322.845.491	25.827.639	17.539.239	(35.271.408.788)	1.403.139	(2.821.712.703)
11/09/03	1	0	305.306.252	24.424.500	0	0	0	0
11/10/03	1	0	305.306.252	24.424.500	0	0	0	0
11/11/03	1	18.113.687	305.306.252	24.424.500	16.771.932	(32.185.337.637)	1.341.755	(2.574.827.011)
11/12/03	1	0	288.534.320	23.082.746	0	0	0	0
11/01/04	1	0	288.534.320	23.082.746	0	0	0	0
11/02/04	1	17.288.204	288.534.320	23.082.746	16.007.596	(29.245.878.710)	1.280.608	(2.339.670.297)
11/03/04	1	0	272.526.724	21.802.138	0	0	0	0
11/04/04	1	0	272.526.724	21.802.138	0	0	0	0
11/05/04	1	16.530.082	272.526.724	21.802.138	15.305.632	(26.585.882.309)	1.224.451	(2.126.870.585)
11/06/04	1	0	257.221.092	20.577.687	0	0	0	0
11/07/04	1	0	257.221.092	20.577.687	0	0	0	0
11/08/04	1	15.756.866	257.221.092	20.577.687	14.589.691	(24.000.041.908)	1.167.175	(1.920.003.353)

DEAL
 MEZZ. DECLINN
 MEZZ. STOPS DECLINN
 VIDA RESIDUAL DESDE

759.000
 8,00%
 1,00%
11/02/09

DATE		PRINCIPAL AVAILABLE	SENIOR NOTES	MEZZANIE NOTES	CLASS A PRINCIPAL	AVERAGE LIFE CLASS A	CLASS B PRINCIPAL	AVERAGE LIFE CLASS B
11/09/04	1	0	242.631.401	19.410.512	0	0	0	0
11/10/04	1	0	242.631.401	19.410.512	0	0	0	0
11/11/04	1	15.054.039	242.631.401	19.410.512	13.938.925	(21.647.150.044)	1.115.114	(1.731.772.004)
11/12/04	1	0	228.692.476	18.295.398	0	0	0	0
11/01/05	1	0	228.692.476	18.295.398	0	0	0	0
11/02/05	1	14.354.911	228.692.476	18.295.398	13.291.584	(19.419.004.760)	1.063.327	(1.553.520.381)
11/03/05	1	0	215.400.892	17.232.071	0	0	0	0
11/04/05	1	0	215.400.892	17.232.071	0	0	0	0
11/05/05	1	13.714.831	215.400.892	17.232.071	12.698.917	(17.422.914.771)	1.015.913	(1.393.833.182)
11/06/05	1	0	202.701.974	16.216.158	0	0	0	0
11/07/05	1	0	202.701.974	16.216.158	0	0	0	0
11/08/05	1	13.063.662	202.701.974	16.216.158	12.095.983	(15.482.858.166)	967.679	(1.238.628.653)
11/09/05	1	0	190.605.992	15.248.479	0	0	0	0
11/10/05	1	0	190.605.992	15.248.479	0	0	0	0
11/11/05	1	12.472.157	190.605.992	15.248.479	11.548.293	(13.719.372.423)	923.863	(1.097.549.794)
11/12/05	1	0	179.057.698	14.324.616	0	0	0	0
11/01/06	1	0	179.057.698	14.324.616	0	0	0	0
11/02/06	1	11.826.554	179.057.698	14.324.616	10.950.513	(12.001.761.808)	876.041	(960.140.945)
11/03/06	1	0	168.107.186	13.448.575	0	0	0	0
11/04/06	1	0	168.107.186	13.448.575	0	0	0	0
11/05/06	1	11.263.505	168.107.186	13.448.575	10.429.171	(10.502.175.308)	834.334	(840.174.025)
11/06/06	1	0	157.678.015	12.614.241	0	0	0	0
11/07/06	1	0	157.678.015	12.614.241	0	0	0	0
11/08/06	1	10.633.825	157.678.015	12.614.241	9.846.134	(9.009.213.011)	787.691	(720.737.041)
11/09/06	1	0	147.831.880	11.826.550	0	0	0	0
11/10/06	1	0	147.831.880	11.826.550	0	0	0	0
11/11/06	1	10.103.626	147.831.880	11.826.550	9.355.209	(7.699.336.999)	748.417	(615.946.960)
11/12/06	1	0	138.476.671	11.078.134	0	0	0	0
11/01/07	1	0	138.476.671	11.078.134	0	0	0	0
11/02/07	1	9.533.020	138.476.671	11.078.134	8.826.870	(6.452.442.300)	706.150	(516.195.384)
11/03/07	1	0	129.649.801	10.371.984	0	0	0	0
11/04/07	1	0	129.649.801	10.371.984	0	0	0	0
11/05/07	1	9.053.763	129.649.801	10.371.984	8.383.114	(5.381.958.945)	670.649	(430.556.716)
11/06/07	1	0	121.266.687	9.701.335	0	0	0	0
11/07/07	1	0	121.266.687	9.701.335	0	0	0	0
11/08/07	1	8.538.662	121.266.687	9.701.335	7.906.168	(4.348.392.467)	632.493	(347.871.397)
11/09/07	1	0	113.360.519	9.068.842	(0)	0	0	(0)
11/10/07	1	0	113.360.519	9.068.842	0	0	0	0
11/11/07	1	8.106.459	113.360.519	9.068.842	7.505.981	(3.437.739.118)	600.478	(275.019.129)
11/12/07	1	0	105.854.538	8.468.363	0	0	0	0
11/01/08	1	0	105.854.538	8.468.363	0	0	0	0
11/02/08	1	7.560.518	105.854.538	8.468.363	6.682.155	(2.445.668.881)	878.363	(321.480.881)
11/03/08	1	0	99.172.383	7.590.000	0	0	0	0
11/04/08	1	0	99.172.383	7.590.000	0	0	0	0
11/05/08	1	7.135.895	99.172.383	7.590.000	7.135.895	(1.969.507.023)	0	0
11/06/08	1	0	92.036.488	7.590.000	0	0	0	0
11/07/08	1	0	92.036.488	7.590.000	0	0	0	0
11/08/08	1	6.546.151	92.036.488	7.590.000	6.546.151	(1.204.491.806)	0	0
11/09/08	1	0	85.490.337	7.590.000	0	0	0	0
11/10/08	1	0	85.490.337	7.590.000	0	0	0	0
11/11/08	1	6.124.884	85.490.337	7.590.000	6.124.884	(563.489.289)	0	0
11/12/08	1	0	79.365.453	7.590.000	0	0	0	0
11/01/09	1	0	79.365.453	7.590.000	0	0	0	0
11/02/09	1	5.706.841	79.365.453	7.590.000	5.706.841	0	0	0
11/03/09	1	0	73.658.613	7.590.000	0	0	0	0
11/04/09	1	0	73.658.613	7.590.000	0	0	0	0
11/05/09	1	81.248.613	73.658.613	7.590.000	73.658.613	6.555.616.513	7.590.000	675.510.000