



FONDO DE TITULIZACIÓN HIPOTECARIA HIPOTEBANSA VIII

Francisco Fortes Clavero
Analyst
Santander de Titulización
Ciudad Grupo Santander
Ed. Encinar 28660 Boadilla del Monte
ffortes@gruposantander.com
Tel: +34 91 289 32 90



FONDO DE TITULIZACION HIPOTECARIA : HIPOTEBANSA 8

I. DATA OF THE FUND

Constitution Date	December 17th 1998.	Paying Agent	Banco Santander	
Disbursement Date	December 22th 1998.	Negotiation Market	AIAF	
Final Date of Redemption	December 15th 2028.	Rating Agencies	Fitch IBCA Moody's España	
Gestora	Santander de Titulización	Calification	Inicial	Actual
MP's Seller	Banco Santander	Class A	AAA/Aaa	AAA/Aaa
SWAP Counterparty	Banco Santander	Class B	A/A2	A+/A2

II. SECURITIES ISSUED CHARGED TO THE FUND: SECURITISATION BONDS

CLASS PRIORITY	NUMBER OF BONDS		NOMINAL		
			INITIAL	CURRENT	%Cur//Ini
Class A		Nominal per Bond	150.253,03	17.681,20 €	
(ISIN=ES0315227001)	2.126	Total Nominal	319.437.933,48	37.590.231,20 €	11,77%
Class B		Nominal per Bond	150.253,03	63.712,27 €	
(ISIN=ES0315227019)	59	Total Nominal	8.864.928,54	3.759.023,93 €	42,40%

REDEMPTION AND INTEREST OF THE BONDS			
	Current		Next
Current Redemption Date	15/06/2009	Next Coupon Date	15/09/2009
Principal accrued per Bond and not paid	0	Interest Rate	Serie A- 1,5616% Serie B- 2,0990%
Bullet	NO		
Class A Redemption	821,91 €	Gross Interest	Serie A- 69,59 €
Class B Redemption	2.961,66 €	Next Coupon Date	Serie B- 337,08 €
Class A Gross Interest	89,74 €	Net Interest	Serie A- 57,07 €
Class B Gross Interest	412,71 €	Next Coupon Date	Serie B- 276,40 €

III. ASSET PURCHASED BY THE FUND: MORTGAGES PARTICIPATIONS

MORTGAGES PARTICIPATION	ISSUE DATE	CURRENT DATE
Number of loans	5.730	1.639
Credit Rights Outstanding Balance to be amortised	328.303.109,52 €	41.349.261,09 €
Credit Rights Outstanding Balance per loan to be amortised	57.295,48 €	25.228,35 €
Rate Interest	5,28%	5,02%

PREPAYMENT RATE	CURRENT SITUATION
Monthly Single Rate	3,73%
Average Monthly Single Rate	6,10%
Constant Prepayment Rate from Constitution	10,93%



**FONDO DE TITULIZACIÓN HIPOTECARIA
HIPOTEBANSA VIII**

QUARTERLY BTH'S PAYOUT REPORT

Report date: June 15th, 2009

BONDS PRINCIPAL	
PREVIOUS BALANCE:	43.271.373,73 €
PRINCIPAL AMORTISED:	1.922.118,60 €
OUTSTANDING BALANCE:	41.349.255,13 €
% OF INITIAL BALANCE:	12,59%
PRINCIPAL ACCRUED NOT PAID:	0,00

DATA	
Determination Date	June 5, 2009
Payment Date	June 15, 2009
Last Payment Date	March 16, 2009
Num of Days (Act/360)	91
3 Months Libor(%)	1,27025%
Next Payment Date	September 15, 2009

ACUMULATIVE INTEREST PAID TO	
BTH'S HOLDERS AS OF PREVIOUS PAYMENT DATE:	60.352.592,71 €
INTEREST PAID ON June 15th, 2009	215.137,13 €
CUMULATIVE INTEREST PAID TO BTH'S HOLDERS UP TO DATE:	60.567.729,84 €

RESIDUAL LIFE (YEARS)		
	Initial	June 15, 2009
Class A	7,2	1,1
Class B	13,6	1,13



**FONDO DE TITULIZACIÓN HIPOTECARIA
HIPOTEBANSA VIII**

QUARTERLY COLLATERAL REPORT

Report date: June 15th, 2009

MP'S PRINCIPAL	
PREVIOUS BALANCE:	43.271.383,60 €
PRINCIPAL AMORTISED:	1.922.122,51 €
OUTSTANDING BALANCE:	41.349.261,09 €
NUMBER OF LOANS:	1.639
LTV	33,62%

INTEREST	
INTEREST RECEIVED DURING RELEVANT PERIOD:	570.076,02
INTEREST ACCRUED DURING RELEVANT PERIOD:	617.685,65



**FONDO DE TITULIZACIÓN HIPOTECARIA
HIPOTEBANSA VIII**

QUARTERLY COLLATERAL REPORT

MP'S IN ARREARS					
MP'S IN ARREARS	UP TO 30 DAYS	30 TO 60 DAYS	60 TO 90 DAYS	90 TO 180 DAYS	OVER 180 DAYS
PRINCIPAL BALANCE IN ARREARS:	124,27 €	3.470,18 €	1.191,84 €	395,92 €	0,00 €
INTEREST ACCRUED ON PH'S IN ARREARS:	34,14 €	1.349,95 €	345,13 €	106,46 €	0,00 €
OUTSTANDING BALANCE:	6.031,24 €	323.960,34 €	147.074,77 €	21.852,30 €	48.659,31 €
NUMBER OF LOANS:	1	10	2	1	4
% OF OUTSTANDING BALANCE	0,01%	0,78%	0,36%	0,05%	0,12%

This Report does not include loans in arrears from 0 to 15 days, as it is considered a technical arrear with a high porcentage of recovery.

Contentius	48.659,31
-------------------	-----------

Contentius : Loans in which the originator will take legal actions. This amount is included in the over 180 days in arrears bucket.

NET LOSS	35.351,10 €
-----------------	-------------

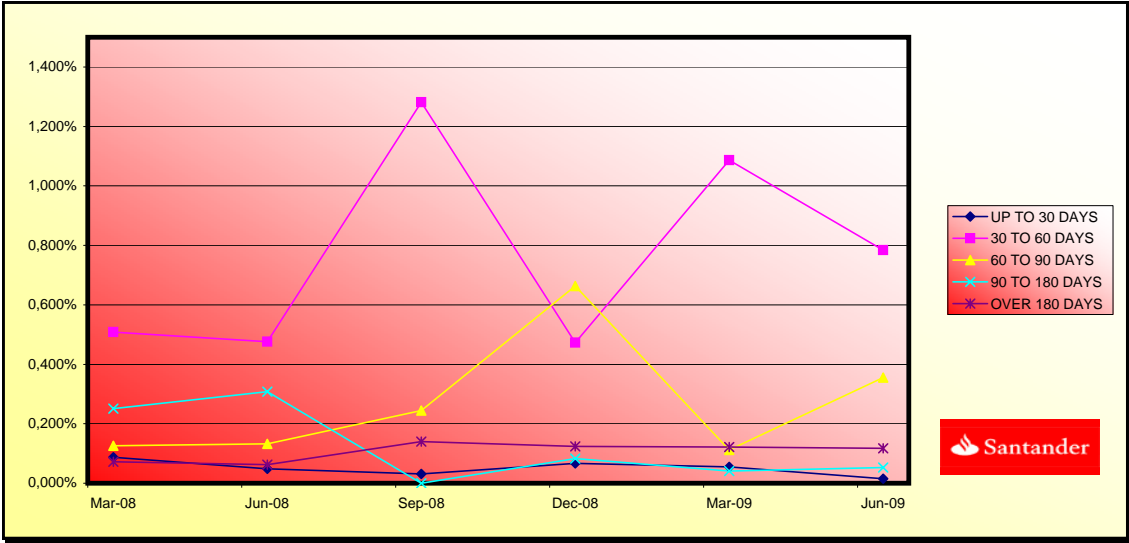
TRANSITORY PROPERTY	
LAST BALANCE	0,00 €
CURRENT BALANCE	0,00 €
NUMBER TRANS. PROP	0



**FONDO DE TITULIZACIÓN HIPOTECARIA
HIPOTEBANSA VIII**

Report date: June 15th, 2009

ARREARS PERFORMANCE						
	10-Mar-08	09-Jun-08	08-Sep-08	05-Dec-08	09-Mar-09	05-Jun-09
UP TO 30 DAYS	0,087%	0,048%	0,031%	0,067%	0,055%	0,015%
30 TO 60 DAYS	0,508%	0,476%	1,282%	0,473%	1,087%	0,783%
60 TO 90 DAYS	0,125%	0,132%	0,244%	0,664%	0,112%	0,356%
90 TO 180 DAYS	0,251%	0,308%	0,000%	0,083%	0,041%	0,053%
OVER 180 DAYS	0,072%	0,063%	0,141%	0,124%	0,122%	0,118%





**FONDO DE TITULIZACIÓN HIPOTECARIA
HIPOTEBANSA VIII**

QUARTERLY REPORT - ALLOCATION OF CASH

Report date: June 15th, 2009

TOTAL CASH RECEIVED END OF PERIOD:		2.528.918,02 €
a) CASH RECEIVED - PRINCIPAL		
1. AMORTIZATION OF PH'S:		1.917.956,56 €
b) CASH RECEIVED – INTEREST		
1. INTEREST RECEIVED FROM MP'S:		570.076,02 €
2. INTEREST RECEIVED UNDER GIC:		35.262,59 €
c) CONTENTIUS COLLECTION		5.622,85 €

TOTAL CASH PAID END OF PERIOD:		2.528.918,02 €
1. CURRENT EXPENSES:		
		20.595,60 €
2. NET INTEREST UNDER CLASS A SWAP:		
		286.332,99 €
3. INTEREST PAID TO BTH'S A HOLDERS:		
		190.787,24 €
4. AMORTIZATION OF BTH'S :		
		1.922.118,60 €
5. NET INTEREST UNDER CLASS B SWAP:		
		23.362,78 €
6. INTEREST PAID TO BTH'S B HOLDERS:		
		24.349,89 €
7. INTEREST PAID ON SUBORDINATED LOAN:		
		18.296,33 €
8. REPAYMENT OF SUBORDINATED LOAN:		
		29.600,69 €
9. FEE IN FAVOUR OF SANTANDER		
		43.074,59 €
10. UTILIZATIONS OF PRINCIPAL AND SECONDARY RESERVE FUND:		
		-29.600,69 €

TREASURY ACCOUNT STATEMENT		1.457.535,78 €
a) RELATED TO THE PRINCIPAL RESERVE FUND		
1. PREVIOUS BALANCE:		536.565,16 €
2. PERIOD UTILIZATION:		-23.834,32 €
3. OUTSTANDING BALANCE:		512.730,84 €
b) RELATED TO THE SECONDARY RESERVE FUND		
1. PREVIOUS PERIOD RETENCION:		950.571,31 €
2. PERIOD UTILIZATION:		-5.766,37 €
3. OUTSTANDING BALANCE:		944.804,94 €
c) WITHHOLDING ON BTH'S INTEREST TO BE PAID		0,00 €



**FONDO DE TITULIZACIÓN HIPOTECARIA
HIPOTEBANSA VIII**

CREDIT ENHANCEMENT AND SUBORDINATED LOAN

Report date: June 15th, 2009

CREDIT ENHANCEMENT		
CONCEPTS	22/12/1998	June 15, 2009
SUBORDINATED ISSUE	2,70%	9,09%
PRINCIPAL RESERVE FUND	4.070.955,49 €(1,24%)	512,730,84(1,24%)
SECONDARY RESERVE FUND	1.805.665,74 €(0,55%)	944,804,94(2,28%)
EXCESS SPREAD	0,65%	0,65%

SUBORDINATED LOAN		
CONCEPTS	22/12/1998	June 15, 2009
TOTAL OUTSTANDING	6.999.386,97 €	1.458.966,93 €
INTEREST RATE	4,63	4,37



**FONDO DE TITULIZACIÓN HIPOTECARIA
HIPOTEBANSA VIII**

TRIGGERS

Report date: June 15th, 2009

CLASS B REDEMPTION	
IF 1) IS HIGHER THAN 2) CLASS B IS NOT AMORTISED	
1) MP'S IN ARREARS OVER 90 DAYS	70.511,61 €
2) 7% MP'S OUTSTANDING BALANCE	2.894.448,28 €

CLASS B IS AMORTISED



FONDO DE TITULIZACIÓN HIPOTECARIA
HIPOTEBANSA VIII

LOAN TO VALUE

Report date: June 15th, 2009

LTV				
	OUTS, BALANCE	% OUTSTANDING	NUMBER LOANS	% NUM LOANS
0-9,99	2.422,96 €	5,86%	364	22,20%
10-19,99	6.267,66 €	15,17%	354	21,59%
20-29,99	9.462,13 €	22,91%	416	25,38%
30-39,99	7.952,90 €	19,25%	187	11,40%
40-49,99	8.269,37 €	20,02%	196	11,95%
50-59,99	5.222,96 €	12,64%	94	5,73%
60-69,99	1.660,58 €	4,02%	26	1,58%
70-79,99	36,70 €	0,08%	1	0,06%
>80	5,29 €	0,01%	1	0,06%



**FONDO DE TITULIZACIÓN HIPOTECARIA
HIPOTEBANSA VIII**

Report date: June 15th, 2009

DEFINITIONS

TRANSITORY PROPERTIES: Those assets in the Balance of the Fund as a consequence of a judicial or non judicial process.

CONTENTIOUS : Loans in which the originator will take legal actions. This amount is included in the bucket >180 days in arrears.

NET LOSS: Loans which the originator considers that will not recover (net of recoveries)

PREPAYMENTS - HIPOTEBANSA VIII

June 15, 2009

Date	Outstanding before prepayment 0,166386	Real outstanding	0,96% Prepayment vector	Remaining at the end of the month	Average Single monthly mortality	CPR	Monthly Single monthly mortality	CPR	Outstanding after prepayment
						11,19%		6,10%	
1	328.303,1		100,00%	100,00%					328.303,1
2	1-ene-99	327.099,8	324.774,7	99,04%	99,29%	0,71%	8,20%	0,71%	323.958,7
3	1-feb-99	325.891,2	322.035,2	98,09%	98,82%	0,59%	6,89%	0,48%	319.662,3
4	1-mar-99	324.677,2	318.871,9	97,15%	98,21%	0,60%	6,96%	0,61%	315.413,4
5	1-abr-99	323.458,0	315.254,0	96,21%	97,46%	0,64%	7,42%	0,76%	311.211,4
6	1-may-99	322.233,3	312.636,8	95,29%	97,02%	0,60%	7,00%	0,45%	307.056,0
7	1-jun-99	321.003,3	310.219,2	94,37%	96,64%	0,57%	6,61%	0,39%	302.946,6
8	1-jul-99	319.768,4	306.315,7	93,47%	95,79%	0,61%	7,10%	0,88%	298.883,2
9	1-ago-99	318.528,1	303.968,7	92,57%	95,43%	0,58%	6,78%	0,38%	294.864,9
10	1-sep-99	317.282,2	302.078,6	91,68%	95,21%	0,54%	6,34%	0,23%	290.891,2
11	1-oct-99	316.031,0	299.040,4	90,80%	94,62%	0,55%	6,42%	0,61%	286.961,6
12	1-nov-99	314.774,2	295.825,4	89,93%	93,98%	0,56%	6,55%	0,68%	283.075,7
13	1-dic-99	313.511,8	293.273,5	89,07%	93,54%	0,55%	6,46%	0,46%	279.233,1
14	1-ene-00	312.244,0	288.901,9	88,21%	92,52%	0,60%	6,92%	1,09%	275.433,3
15	1-feb-00	310.970,5	285.830,5	87,36%	91,92%	0,60%	6,97%	0,66%	271.675,9
16	1-mar-00	309.691,4	282.881,4	86,52%	91,34%	0,60%	6,99%	0,62%	267.960,3
17	1-abr-00	308.406,8	279.693,0	85,69%	90,69%	0,61%	7,07%	0,72%	264.286,2
18	1-may-00	307.116,4	276.956,5	84,87%	90,18%	0,61%	7,04%	0,56%	260.653,2
19	1-jun-00	305.820,4	274.158,8	84,06%	89,65%	0,61%	7,03%	0,59%	257.060,9
20	1-jul-00	304.519,7	269.788,1	83,25%	88,59%	0,64%	7,36%	1,17%	253.509,6
21	1-ago-00	303.213,3	265.998,8	82,45%	87,73%	0,65%	7,56%	0,98%	249.998,1
22	1-sep-00	301.901,2	263.416,1	81,66%	87,25%	0,65%	7,50%	0,54%	246.525,9
23	1-oct-00	300.583,3	261.530,4	80,87%	87,01%	0,63%	7,31%	0,28%	243.092,8
24	1-nov-00	299.259,6	259.951,5	80,10%	86,86%	0,61%	7,08%	0,16%	239.698,1
25	1-dic-00	297.930,1	257.382,3	79,33%	86,39%	0,61%	7,05%	0,55%	236.341,7
26	1-ene-01	296.595,0	253.846,8	78,57%	85,59%	0,62%	7,20%	0,93%	233.023,2
27	1-feb-01	295.254,1	250.678,5	77,81%	84,90%	0,63%	7,28%	0,80%	229.742,2
28	1-mar-01	293.907,2	247.405,3	77,06%	84,18%	0,64%	7,37%	0,85%	226.498,1
29	1-abr-01	292.554,5	244.333,0	76,32%	83,52%	0,64%	7,43%	0,79%	223.290,6
30	1-may-01	291.195,8	241.627,7	75,59%	82,98%	0,64%	7,43%	0,65%	220.119,3
31	1-jun-01	289.831,1	239.231,8	74,87%	82,54%	0,64%	7,39%	0,53%	216.983,9
32	1-jul-01	288.461,0	235.542,8	74,15%	81,66%	0,65%	7,55%	1,07%	213.884,4
33	1-ago-01	287.084,9	232.144,3	73,43%	80,86%	0,66%	7,66%	0,97%	210.819,9
34	1-sep-01	285.702,7	229.852,5	72,73%	80,45%	0,66%	7,60%	0,51%	207.790,2
35	1-oct-01	284.314,5	226.825,2	72,03%	79,78%	0,66%	7,66%	0,84%	204.794,9
36	1-nov-01	282.920,1	224.355,6	71,34%	79,30%	0,66%	7,64%	0,60%	201.833,6
37	1-dic-01	281.519,6	220.002,5	70,65%	78,15%	0,68%	7,89%	1,45%	198.905,9
38	1-ene-02	280.113,9	216.525,1	69,98%	77,30%	0,69%	8,01%	1,09%	196.012,2
39	1-feb-02	278.702,0	213.322,5	69,30%	76,54%	0,70%	8,10%	0,98%	193.151,4
40	1-mar-02	277.283,9	210.772,1	68,64%	76,01%	0,70%	8,09%	0,69%	190.323,3
41	1-abr-02	275.859,5	208.152,7	67,98%	75,46%	0,70%	8,10%	0,73%	187.527,4
42	1-may-02	274.428,9	204.446,9	67,33%	74,50%	0,72%	8,26%	1,27%	184.763,4
43	1-jun-02	272.992,0	201.084,3	66,68%	73,66%	0,73%	8,36%	1,13%	182.031,0
44	1-jul-02	271.549,9	197.632,6	66,04%	72,78%	0,74%	8,49%	1,19%	179.330,7
45	1-ago-02	270.101,6	194.571,4	65,41%	72,04%	0,74%	8,56%	1,02%	176.661,3
46	1-sep-02	268.646,8	192.391,2	64,78%	71,61%	0,74%	8,52%	0,59%	174.022,5
47	1-oct-02	267.185,6	189.734,9	64,16%	71,01%	0,74%	8,54%	0,84%	171.414,0
48	1-nov-02	265.718,0	186.207,6	63,54%	70,08%	0,75%	8,68%	1,32%	168.835,4
49	1-dic-02	264.244,0	183.383,7	62,93%	69,40%	0,76%	8,73%	0,97%	166.286,5
50	1-ene-03	262.767,9	179.522,5	62,32%	68,32%	0,77%	8,91%	1,56%	163.769,8
51	1-feb-03	261.285,3	176.640,3	61,73%	67,60%	0,78%	8,97%	1,05%	161.282,0
52	1-mar-03	259.796,2	173.695,7	61,13%	66,86%	0,79%	9,04%	1,10%	158.822,9
53	1-abr-03	258.300,5	171.781,2	60,55%	66,50%	0,78%	8,98%	0,53%	156.392,2
54	1-may-03	256.798,3	168.774,8	59,97%	65,72%	0,79%	9,07%	1,18%	153.989,5
55	1-jun-03	255.289,4	165.879,9	59,39%	64,98%	0,80%	9,14%	1,13%	151.614,7
56	1-jul-03	253.801,8	162.667,2	58,82%	64,09%	0,81%	9,25%	1,36%	149.283,8

57	1-ago-03	252.307,6	159.583,4	58,25%	63,25%	0,81%	9,35%	1,31%	14,69%	146.979,8
58	1-sep-03	250.806,8	157.836,5	57,69%	62,93%	0,81%	9,29%	0,50%	5,87%	144.702,5
59	1-oct-03	249.299,5	155.484,2	57,14%	62,37%	0,81%	9,31%	0,89%	10,22%	142.451,7
60	1-nov-03	247.785,5	151.070,7	56,59%	60,97%	0,84%	9,57%	2,24%	23,85%	140.226,9
61	1-dic-03	246.264,8	148.466,0	56,05%	60,29%	0,84%	9,63%	1,12%	12,61%	138.028,1
62	1-ene-04	244.750,9	144.181,1	55,51%	58,91%	0,86%	9,89%	2,29%	24,23%	135.862,2
63	1-feb-04	243.230,3	141.450,7	54,98%	58,16%	0,87%	9,96%	1,28%	14,33%	133.721,6
64	1-mar-04	241.703,1	139.526,7	54,45%	57,73%	0,87%	9,94%	0,74%	8,49%	131.605,9
65	1-abr-04	240.169,1	136.041,0	53,93%	56,64%	0,88%	10,11%	1,88%	20,32%	129.514,9
66	1-may-04	238.628,4	133.342,0	53,41%	55,88%	0,89%	10,19%	1,35%	15,06%	127.448,3
67	1-jun-04	237.080,9	131.087,8	52,90%	55,29%	0,89%	10,21%	1,05%	11,88%	125.405,9
68	1-jul-04	235.541,8	129.049,6	52,39%	54,79%	0,89%	10,22%	0,91%	10,41%	123.395,4
69	1-ago-04	233.995,9	126.740,5	51,88%	54,16%	0,90%	10,26%	1,14%	12,86%	121.408,4
70	1-sep-04	232.443,2	120.081,8	51,39%	51,66%	0,95%	10,85%	4,62%	43,32%	119.444,6
71	1-oct-04	230.883,7	117.674,7	50,89%	50,97%	0,96%	10,91%	1,34%	14,97%	117.503,9
72	1-nov-04	229.317,3	115.106,8	50,40%	50,20%	0,97%	11,00%	1,51%	16,73%	115.586,1
73	1-dic-04	227.744,1	113.483,0	49,92%	49,83%	0,96%	10,96%	0,73%	8,41%	113.690,7
74	1-ene-05	226.177,6	110.418,3	49,44%	48,82%	0,98%	11,12%	2,03%	21,78%	111.824,5
75	1-feb-05	224.604,3	108.164,9	48,97%	48,16%	0,98%	11,17%	1,35%	15,10%	109.980,3
76	1-mar-05	223.024,1	105.899,0	48,50%	47,48%	0,99%	11,23%	1,40%	15,58%	108.157,8
77	1-abr-05	221.436,9	104.153,6	48,03%	47,04%	0,99%	11,23%	0,94%	10,75%	106.356,9
78	1-may-05	219.842,7	102.143,6	47,57%	46,46%	0,99%	11,26%	1,22%	13,68%	104.577,2
79	1-jun-05	218.241,5	100.158,7	47,11%	45,89%	0,99%	11,29%	1,22%	13,74%	102.818,6
80	1-jul-05	216.648,4	98.055,6	46,66%	45,26%	1,00%	11,34%	1,38%	15,36%	101.088,0
81	1-ago-05	215.048,4	96.136,0	46,21%	44,70%	1,00%	11,38%	1,23%	13,78%	99.377,8
82	1-sep-05	213.441,2	94.617,9	45,77%	44,33%	1,00%	11,35%	0,84%	9,61%	97.688,0
83	1-oct-05	211.827,1	93.261,9	45,33%	44,03%	1,00%	11,31%	0,68%	7,89%	96.018,2
84	1-nov-05	210.205,8	91.161,9	44,89%	43,37%	1,00%	11,38%	1,50%	16,56%	94.368,3
85	1-dic-05	208.577,4	89.308,3	44,46%	42,82%	1,00%	11,41%	1,27%	14,20%	92.738,1
86	1-ene-06	206.951,9	87.421,3	44,04%	42,24%	1,01%	11,45%	1,34%	14,99%	91.131,8
87	1-feb-06	205.319,2	85.627,5	43,61%	41,70%	1,01%	11,49%	1,27%	14,25%	89.544,6
88	1-mar-06	203.679,4	83.842,5	43,19%	41,16%	1,02%	11,52%	1,30%	14,49%	87.976,4
89	1-abr-06	202.032,4	82.099,3	42,78%	40,64%	1,02%	11,56%	1,28%	14,33%	86.427,0
90	1-may-06	200.378,1	80.700,2	42,37%	40,27%	1,02%	11,54%	0,89%	10,20%	84.896,2
91	1-jun-06	198.716,5	78.608,3	41,96%	39,56%	1,03%	11,63%	1,78%	19,37%	83.383,8
92	1-jul-06	197.076,8	77.361,9	41,56%	39,25%	1,02%	11,60%	0,77%	8,82%	81.901,6
93	1-ago-06	195.429,9	75.928,8	41,16%	38,85%	1,02%	11,60%	1,03%	11,63%	80.437,3
94	1-sep-06	193.775,8	74.801,2	40,76%	38,60%	1,02%	11,56%	0,64%	7,46%	78.990,6
95	1-oct-06	192.114,3	73.641,8	40,37%	38,33%	1,01%	11,52%	0,70%	8,07%	77.561,3
96	1-nov-06	190.445,6	72.294,3	39,98%	37,96%	1,01%	11,52%	0,97%	11,03%	76.149,2
97	1-dic-06	188.769,5	70.734,4	39,60%	37,47%	1,02%	11,55%	1,29%	14,42%	74.754,3
98	1-ene-07	187.103,7	69.108,7	39,22%	36,94%	1,02%	11,59%	1,43%	15,86%	73.383,0
99	1-feb-07	185.430,5	67.689,7	38,84%	36,50%	1,02%	11,61%	1,17%	13,17%	72.028,4
100	1-mar-07	183.750,0	66.705,8	38,47%	36,30%	1,02%	11,56%	0,55%	6,43%	70.690,3
101	1-abr-07	182.062,0	65.495,7	38,10%	35,97%	1,02%	11,55%	0,90%	10,32%	69.368,3
102	1-may-07	180.366,7	64.489,1	37,74%	35,75%	1,01%	11,50%	0,61%	7,09%	68.062,4
103	1-jun-07	178.663,8	63.339,0	37,37%	35,45%	1,01%	11,49%	0,85%	9,71%	66.772,4
104	1-jul-07	176.965,2	62.096,4	37,01%	35,09%	1,01%	11,49%	1,02%	11,59%	65.502,5
105	1-ago-07	175.259,2	60.696,5	36,66%	34,63%	1,01%	11,52%	1,30%	14,56%	64.248,1
106	1-sep-07	173.545,6	60.072,2	36,31%	34,61%	1,01%	11,42%	0,05%	0,61%	63.009,0
107	1-oct-07	171.824,5	59.296,8	35,96%	34,51%	1,00%	11,35%	0,30%	3,57%	61.785,0
108	1-nov-07	170.095,8	58.528,3	35,61%	34,41%	0,99%	11,28%	0,29%	3,46%	60.576,1
109	1-dic-07	168.359,5	58.065,3	35,27%	34,49%	0,98%	11,16%	-0,23%	-2,82%	59.382,0
110	1-ene-08	166.636,2	55.447,2	34,93%	33,27%	1,00%	11,41%	3,52%	34,96%	58.209,8
111	1-feb-08	164.905,4	53.765,1	34,60%	32,60%	1,01%	11,51%	2,02%	21,68%	57.052,0
112	1-mar-08	163.166,9	53.000,0	34,26%	32,48%	1,01%	11,45%	0,37%	4,38%	55.908,4
113	1-abr-08	161.420,8	51.747,9	33,94%	32,06%	1,01%	11,48%	1,31%	14,60%	54.779,0
114	1-may-08	159.667,0	50.580,2	33,61%	31,68%	1,01%	11,49%	1,18%	13,31%	53.663,5
115	1-jun-08	157.905,5	49.921,4	33,29%	31,61%	1,01%	11,42%	0,20%	2,39%	52.561,9
116	1-jul-08	156.348,7	48.995,3	32,97%	31,34%	1,00%	11,40%	0,88%	10,04%	51.543,9
117	1-ago-08	154.785,0	48.047,8	32,65%	31,04%	1,00%	11,40%	0,94%	10,75%	50.538,4
118	1-sep-08	153.214,5	47.469,1	32,34%	30,98%	1,00%	11,32%	0,19%	2,28%	49.545,2
119	1-oct-08	151.637,0	46.380,8	32,03%	30,59%	1,00%	11,35%	1,28%	14,28%	48.564,2
120	1-nov-08	150.052,6	45.719,0	31,72%	30,47%	0,99%	11,29%	0,39%	4,53%	47.595,3
121	1-dic-08	148.461,3	45.341,64	31,41%	30,54%	0,98%	11,18%	-0,24%	-2,89%	46.638,4
122	1-ene-09	146.979,2	44.446,62	31,11%	30,24%	0,98%	11,18%	0,99%	11,21%	45.729,4
123	1-feb-09	145.490,5	43.783,29	30,81%	30,09%	0,98%	11,14%	0,48%	5,66%	44.831,5
124	1-mar-09	143.995,3	43.271,38	30,52%	30,05%	0,97%	11,07%	0,14%	1,70%	43.944,7
125	1-abr-09	142.493,5	42.694,79	30,23%	29,96%	0,97%	11,01%	0,29%	3,46%	43.068,8
126	1-may-09	140.985,2	41.931,18	29,93%	29,74%	0,97%	10,99%	0,74%	8,50%	42.203,7
127	1-jun-09	139.470,1	41.349,26	29,65%	29,65%	0,96%	10,93%	0,32%	3,73%	41.349,3

DEAL 54.625
 MEZZ. DECLINN 10,00%
 MEZZ. STOPS DECLINN 1,00%
 VIDA RESIDUAL DESDE 9-jun-09

1,10

1,13

FECHA				SERIE A		SERIE B			
	PRINCIPAL AVAILABLE	SENIOR NOTES	MEZZANIE NOTES	PRINCIPAL	VIDA MEDIA	PRINCIPAL	VIDA MEDIA		
			328.302.862,02						
		319.437.933	8.864.929						
8-ene-99	0	319.437.933	8.864.929	0	0	0	0	0	0
8-feb-99	1	0	319.437.933	8.864.929	0	0	0	0	0
8-mar-99	1	12.889.733	319.437.933	8.864.929	12.889.733	-48.284.939.706	0	0	0
8-abr-99	1	0	306.548.201	8.864.929	0	0	0	0	0
8-may-99	1	0	306.548.201	8.864.929	0	0	0	0	0
8-jun-99	1	12.466.821	306.548.201	8.864.929	12.466.821	-45.553.763.356	0	0	0
8-jul-99	1	0	294.081.380	8.864.929	0	0	0	0	0
8-ago-99	1	0	294.081.380	8.864.929	0	0	0	0	0
8-sep-99	1	12.055.397	294.081.380	8.864.929	12.055.397	-42.941.323.942	0	0	0
8-oct-99	1	0	282.025.983	8.864.929	0	0	0	0	0
8-nov-99	1	0	282.025.983	8.864.929	0	0	0	0	0
8-dic-99	1	11.658.026	282.025.983	8.864.929	11.658.026	-40.465.007.005	0	0	0
8-ene-00	1	0	270.367.957	8.864.929	0	0	0	0	0
8-feb-00	1	0	270.367.957	8.864.929	0	0	0	0	0
8-mar-00	1	11.272.828	270.367.957	8.864.929	11.272.828	-38.102.159.336	0	0	0
8-abr-00	1	0	259.095.129	8.864.929	0	0	0	0	0
8-may-00	1	0	259.095.129	8.864.929	0	0	0	0	0
8-jun-00	1	10.899.444	259.095.129	8.864.929	10.899.444	-35.837.372.552	0	0	0
8-jul-00	1	0	248.195.685	8.864.929	0	0	0	0	0
8-ago-00	1	0	248.195.685	8.864.929	0	0	0	0	0
8-sep-00	1	10.534.932	248.195.685	8.864.929	10.534.932	-33.669.641.374	0	0	0
8-oct-00	1	0	237.660.753	8.864.929	0	0	0	0	0
8-nov-00	1	0	237.660.753	8.864.929	0	0	0	0	0
8-dic-00	1	10.184.249	237.660.753	8.864.929	10.184.249	-31.622.094.235	0	0	0
8-ene-01	1	0	227.476.504	8.864.929	0	0	0	0	0
8-feb-01	1	0	227.476.504	8.864.929	0	0	0	0	0
8-mar-01	1	9.843.590	227.476.504	8.864.929	9.843.590	-29.678.422.437	0	0	0
8-abr-01	1	0	217.632.914	8.864.929	0	0	0	0	0
8-may-01	1	0	217.632.914	8.864.929	0	0	0	0	0
8-jun-01	1	9.514.201	217.632.914	8.864.929	9.514.201	-27.810.009.486	0	0	0
8-jul-01	1	0	208.118.713	8.864.929	0	0	0	0	0
8-ago-01	1	0	208.118.713	8.864.929	0	0	0	0	0
8-sep-01	1	9.193.661	208.118.713	8.864.929	9.193.661	-26.027.252.980	0	0	0
8-oct-01	1	0	198.925.053	8.864.929	0	0	0	0	0
8-nov-01	1	0	198.925.053	8.864.929	0	0	0	0	0
8-dic-01	1	8.884.344	198.925.053	8.864.929	8.884.344	-24.343.102.170	0	0	0
8-ene-02	1	0	190.040.709	8.864.929	0	0	0	0	0
8-feb-02	1	0	190.040.709	8.864.929	0	0	0	0	0
8-mar-02	1	8.582.624	190.040.709	8.864.929	8.582.624	-22.743.954.483	0	0	0
8-abr-02	1	0	181.458.084	8.864.929	0	0	0	0	0
8-may-02	1	0	181.458.084	8.864.929	0	0	0	0	0
8-jun-02	1	8.292.233	181.458.084	8.864.929	8.292.233	-21.211.530.986	0	0	0
8-jul-02	1	0	173.165.852	8.864.929	0	0	0	0	0
8-ago-02	1	0	173.165.852	8.864.929	0	0	0	0	0
8-sep-02	1	8.008.525	173.165.852	8.864.929	8.008.525	-19.749.022.227	0	0	0
8-oct-02	1	0	165.157.327	8.864.929	0	0	0	0	0
8-nov-02	1	0	165.157.327	8.864.929	0	0	0	0	0
8-dic-02	1	7.735.963	165.157.327	8.864.929	7.735.963	-18.372.912.883	0	0	0
8-ene-03	1	0	157.421.364	8.864.929	0	0	0	0	0
8-feb-03	1	0	157.421.364	8.864.929	0	0	0	0	0
8-mar-03	1	7.463.676	157.421.364	8.864.929	7.463.676	-17.054.498.629	0	0	0
8-abr-03	1	0	149.957.688	8.864.929	0	0	0	0	0
8-may-03	1	0	149.957.688	8.864.929	0	0	0	0	0
8-jun-03	1	7.208.157	149.957.688	8.864.929	7.208.157	-15.807.487.583	0	0	0
8-jul-03	1	0	142.749.532	8.864.929	0	0	0	0	0
8-ago-03	1	0	142.749.532	8.864.929	0	0	0	0	0
8-sep-03	1	6.912.179	142.749.532	8.864.929	6.912.179	-14.522.488.555	0	0	0

DEAL 54.625
 MEZZ. DECLINN 10,00%
 MEZZ. STOPS DECLINN 1,00%
 VIDA RESIDUAL DESDE 9-jun-09

1,10

1,13

				SERIE A		SERIE B	
8-oct-03	1	0	135.837.352	8.864.929	0	0	0
8-nov-03	1	0	135.837.352	8.864.929	0	0	0
8-dic-03	1	6.674.476	135.837.352	8.864.929	6.674.476	-13.415.696.246	0
8-ene-04	1	0	129.162.877	8.864.929	0	0	0
8-feb-04	1	0	129.162.877	8.864.929	0	0	0
8-mar-04	1	6.422.126	129.162.877	8.864.929	6.422.126	-12.324.060.025	0
8-abr-04	1	0	122.740.750	8.864.929	0	0	0
8-may-04	1	0	122.740.750	8.864.929	0	0	0
8-jun-04	1	6.200.008	122.740.750	8.864.929	6.200.008	-11.327.414.253	0
8-jul-04	1	0	116.540.743	8.864.929	0	0	0
8-ago-04	1	0	116.540.743	8.864.929	0	0	0
8-sep-04	1	5.961.289	116.540.743	8.864.929	5.961.289	-10.342.836.232	0
8-oct-04	1	0	110.579.454	8.864.929	0	0	0
8-nov-04	1	0	110.579.454	8.864.929	0	0	0
8-dic-04	1	5.753.896	110.579.454	8.864.929	5.753.896	-9.459.404.356	0
8-ene-05	1	0	104.825.558	8.864.929	0	0	0
8-feb-05	1	0	104.825.558	8.864.929	0	0	0
8-mar-05	1	5.532.897	104.825.558	8.864.929	5.532.897	-8.598.122.238	0
8-abr-05	1	0	99.292.661	8.864.929	0	0	0
8-may-05	1	0	99.292.661	8.864.929	0	0	0
8-jun-05	1	5.339.200	99.292.661	8.864.929	5.339.200	-7.805.910.913	0
8-jul-05	1	0	93.953.461	8.864.929	0	0	0
8-ago-05	1	0	93.953.461	8.864.929	0	0	0
8-sep-05	1	5.130.657	93.953.461	8.864.929	5.130.657	-7.029.000.362	0
8-oct-05	1	0	88.822.803	8.864.929	0	0	0
8-nov-05	1	0	88.822.803	8.864.929	0	0	0
8-dic-05	1	4.949.878	88.822.803	8.864.929	4.515.663	-5.775.533.356	434.215
8-ene-06	1	0	84.307.140	8.430.714	0	0	0
8-feb-06	1	0	84.307.140	8.430.714	0	0	0
8-mar-06	1	4.761.654	84.307.140	8.430.714	4.328.776	-5.146.914.901	432.878
8-abr-06	1	0	79.978.364	7.997.836	0	0	0
8-may-06	1	0	79.978.364	7.997.836	0	0	0
8-jun-06	1	4.592.677	79.978.364	7.997.836	4.175.161	-4.580.151.390	417.516
8-jul-06	1	0	75.803.203	7.580.320	0	0	0
8-ago-06	1	0	75.803.203	7.580.320	0	0	0
8-sep-06	1	4.393.197	75.803.203	7.580.320	3.993.815	-4.013.784.361	399.382
8-oct-06	1	0	71.809.388	7.180.939	0	0	0
8-nov-06	1	0	71.809.388	7.180.939	0	0	0
8-dic-06	1	4.236.322	71.809.388	7.180.939	3.851.202	-3.519.998.860	385.120
8-ene-07	1	0	67.958.186	6.795.819	0	0	0
8-feb-07	1	0	67.958.186	6.795.819	0	0	0
8-mar-07	1	4.064.002	67.958.186	6.795.819	3.694.547	-3.044.306.658	369.455
8-abr-07	1	0	64.263.639	6.426.364	0	0	0
8-may-07	1	0	64.263.639	6.426.364	0	0	0
8-jun-07	1	3.917.819	64.263.639	6.426.364	3.561.653	-2.607.130.331	356.165
8-jul-07	1	0	60.701.985	6.070.199	0	0	0
8-ago-07	1	0	60.701.985	6.070.199	0	0	0
8-sep-07	1	3.763.462	60.701.985	6.070.199	3.421.330	-2.189.650.883	342.133
8-oct-07	1	0	57.280.656	5.728.066	0	0	0
8-nov-07	1	0	57.280.656	5.728.066	0	0	0
8-dic-07	1	3.626.994	57.280.656	5.728.066	3.297.268	-1.810.199.871	329.727
8-ene-08	1	0	53.983.388	5.398.339	0	0	0
8-feb-08	1	0	53.983.388	5.398.339	0	0	0
8-mar-08	1	3.473.527	53.983.388	5.398.339	3.157.752	-1.446.250.533	315.775
8-abr-08	1	0	50.825.636	5.082.564	0	0	0
8-may-08	1	0	50.825.636	5.082.564	0	0	0
8-jun-08	1	3.346.569	50.825.636	5.082.564	3.042.336	-1.113.494.939	304.234
8-jul-08	1	0	47.783.300	4.778.330	0	0	0
8-ago-08	1	0	47.783.300	4.778.330	0	0	0
8-sep-08	1	3.016.670	47.783.300	4.778.330	2.742.427	-751.425.055	274.243
8-oct-08	1	0	45.040.873	4.504.087	0	0	0
8-nov-08	1	0	45.040.873	4.504.087	0	0	0

DEAL	54.625
MEZZ. DECLINN	10,00%
MEZZ. STOPS DECLINN	1,00%
VIDA RESIDUAL DESDE	9-jun-09

1,10

1,13

					SERIE A		SERIE B	
8-dic-08	1	2.906.852	45.040.873	4.504.087	2.642.593	-483.594.530	264.259	-48.359.453
8-ene-09	1	0	42.398.280	4.239.828	0	0	0	0
8-feb-09	1	0	42.398.280	4.239.828	0	0	0	0
8-mar-09	1	2.693.642	42.398.280	4.239.828	2.448.766	-227.735.192	244.877	-22.773.519
8-abr-09	1	0	39.949.514	3.994.951	0	0	0	0
8-may-09	1	0	39.949.514	3.994.951	0	0	0	0
8-jun-09	1	2.595.452	39.949.514	3.994.951	2.359.502	-2.359.502	235.950	-235.950
8-jul-09	1	0	37.590.012	3.759.001	0	0	0	0
8-ago-09	1	0	37.590.012	3.759.001	0	0	0	0
8-sep-09	1	2.485.382	37.590.012	3.759.001	2.259.438	205.608.889	225.944	20.560.889
8-oct-09	1	0	35.330.574	3.533.057	0	0	0	0
8-nov-09	1	0	35.330.574	3.533.057	0	0	0	0
8-dic-09	1	2.394.032	35.330.574	3.533.057	2.200.757	400.537.804	193.275	35.176.022
8-ene-10	1	0	33.129.817	3.339.783	0	0	0	0
8-feb-10	1	0	33.129.817	3.339.783	0	0	0	0
8-mar-10	1	2.287.488	33.129.817	3.339.783	2.287.488	622.196.824	0	0
8-abr-10	1	0	30.842.329	3.339.783	0	0	0	0
8-may-10	1	0	30.842.329	3.339.783	0	0	0	0
8-jun-10	1	2.202.703	30.842.329	3.339.783	2.202.703	801.783.872	0	0
8-jul-10	1	0	28.639.626	3.339.783	0	0	0	0
8-ago-10	1	0	28.639.626	3.339.783	0	0	0	0
8-sep-10	1	31.979.656	28.639.626	3.339.783	28.639.626	13.059.669.262	3.283.029	1.497.061.051