



## **F.T.H. HIPOTEBANSA VIII**

**FRANCISCO FORTES CLAVERO**

**ANALYST**

**SANTANDER DE TITULIZACION, S.G.F.T, S.A.**

**CIUDAD GRUPO SANTANDER**

**28660 BOADILLA DEL MONTE**

**[ffortes@gruposantander.com](mailto:ffortes@gruposantander.com)**

**Tel: 912893290**



NAME OF THE FUND:

F.T.H. HIPOTEBANSA VIII

INFORMATION AT:

QUARTER/SEMESTER: March 15, 2010 - June 15, 2010 YEAR: 2010

Acting on behalf of Santander de Titulización S.G.F.T., S.A. as General Manager:	Signature:
IGNACIO ORTEGA GAVARA - GENERAL MANAGER	

**I. DATA OF THE FUND**

Constitution Date	December 17, 1998	Paying Agent	BANCO SANTANDER	
Disbursement Date	December 22, 1998	Negotiation Market	AIAF	
Final Date of Redemption	December 15, 2028	Ratings Agencies	MOODY'S ESPAÑA	
			FITCH RATINGS	
Management Company	SANTANDER DE TITULIZACION, S.G.F.T, S.A.	Rating	Initial	Current
Credit Rights 's Seller	BANCO SANTANDER	CLASS A	Aaa/AAA	Aaa/AAA
		CLASS B	A2/A	A2/A+

## II. SECURITIES ISSUED CHARGED TO THE FUND: SECURITISATION BONDS

CLASS PRIORITY ISIN CODE	NUM BONDS	NOMINAL			
			Initial	Current	%Act/In
CLASS A ES0315227001	2.126	Nominal per Bond	150.253,03	14.191,36	
		Total Nominal	319.437.933,48	30.170.831,36	9,44 %
CLASS B ES0315227019	59	Nominal per Bond	150.253,03	55.644,55	
		Total Nominal	8.864.928,54	3.283.028,45	37,03 %

REDEMPTION AND INTEREST OF THE BONDS					
Current			Next		
Payment Date of the Current Period June 15, 2010			Next Payment Date September 15, 2010		
	Redemption of the Bonds	Gross Interest	Interest Rate	Gross Interest Next Coupon	Net Interest Next Coupon
CLASS A	827,62 €	33,08 €	0,9347 %	33,43 €	27,08 €
CLASS B	0,00 €	197,93 €	1,4720 %	206,46 €	167,23 €
Accrued amortisation due not payed	0,00 €				
Scheduled Amortisation	NO				

**III. ASSET PURCHASED BY THE FUND: CREDIT RIGHTS**

CREDIT RIGHTS	ISSUE DATE	CURRENT DATE
Number of CR's	5.730	1.410
CR's Outstanding to be amortised	328.303.109,52	33.453.865,07
CR's Outstanding per Loan to be amortised	57.295,48	23.726,14
Interest Rate	5,28 %	2,58 %

PREPAYMENT RATE	CURRENT SITUATION
Monthly Single Rate	4,26 %
Average Monthly Single Rate	10,77 %
Constant Prepayment Rate from Constitution	10,58 %

CURRENT DELINQUENCY	Up to 1 month	From 1 to 6 months	Greater than 6 months
Debt Due (Principal + Interest)	0,00	4.698,21	0,00
Debt to be amortised	0,00	0,00	33.449.536,30
Total Debt	0,00	4.698,21	33.449.536,30

## F.T.H. HIPOTEBANSA VIII

### QUARTERLY BONDS PAYOUT REPORT

June 15, 2010

BONDS. PRINCIPAL	
Previous Balance	35.213.379,93 €
Principal Amortised	1.759.520,12 €
Outstanding Balance	33.453.859,81 €
% of Initial Balance	10,19 %
Principal accrued and unpaid	0,00 €

INTEREST PAID	
CLASS A	70.328,08 €
CLASS B	11.677,87 €
Interest accrued and unpaid	0,00 €

DATA	
Determination Date	June 08, 2010
Payment Date	June 15, 2010
Last Payment Date	March 15, 2010
Number of Days (Act/360)	92
Reference Interest Rate (%)	0,65188%
Next Payment Date	September 15, 2010

RESIDUAL LIFE (YEARS)		
	INITIAL	June 15, 2010
CLASS A	7.20	0.49
CLASS B	13.60	0.51

## F.T.H. HIPOTEBANSA VIII

### QUARTERLY COLLATERAL REPORT

June 15, 2010

PRINCIPAL	
Previous Balance	35.213.381,03 €
Principal Amortised	1.759.515,96 €
Outstanding Balance	33.453.865,07 €
Number of Credit Rights	1.410
LTV	31,90%

INTEREST	
Interest received during relevant period	247.302,38 €
Interest accrued during relevant period	254.533,01 €

PRINCIPAL BALANCE IN ARREARS					
	UP to 30 DAYS	30 to 60 DAYS	60 to 90 DAYS	90 to 180 DAYS	> 180 DAYS
Principal Balance in Arrears	0,00 €	2.681,52 €	1.257,18 €	390,07 €	0,00 €
Interest accrued on Credit Rights in Arrears	0,00 €	309,60 €	59,84 €	0,00 €	0,00 €
Outstanding Balance	0,00 €	134.224,77 €	55.934,47 €	2.049,64 €	86.035,04 €
Number of Credit Rights	0	4	4	1	10
% of Outstanding Balance	0,00 %	0,40 %	0,17 %	0,01 %	0,26%

(1) This report does not include loans in arrears from 1 to 15 days, as it is considered a technical arrear with a high percentage of recovery.

## F.T.H. HIPOTEBANSA VIII

### QUARTERLY COLLATERAL REPORT

June 15, 2010

CONTENTIOUS / JUDICIAL	
Last balance	163.923,84 €
Difference in Actual Period	-77.888,80 €
Current balance	86.035,04 €
Contentious CR's number	10

TRANSITORY PROPERTIES	
Last balance	0,00 €
Difference in Actual Period	0,00 €
Current balance	0,00 €
Transitory properties CR's number	0

NET LOSSES	
Last balance	33.639,30 €
Difference in Actual Period	3.528,96 €
Current balance	37.168,26 €

## F.T.H. HIPOTEBANSA VIII

### QUARTERLY REPORT - ALLOCATION OF CASH

June 15, 2010

TOTAL CASH RECEIVED END OF PERIOD	2.046.697,01 €
<b>CASH RECEIVED - PRINCIPAL</b>	
Amortisation of Credit Rights	1.752.422,26 €
<b>CASH RECEIVED - INTEREST</b>	
Interest received from Credit Rights	247.302,38 €
Interest received under GIC	14.587,09 €
<b>CONTENTIOUS</b>	5.300,00 €
<b>INCOMES/EXPENSES OF TRANSTORY PROPERTIES</b>	0,00 €
<b>RESERVE FUNDS</b>	27.096,53 €
<b>OTHERS</b>	-11,25 €

TREASURY ACCOUNT STATEMENT	1.335.946,69 €
<b>PRINCIPAL RESERVE FUND</b>	
Previous Balance	436.645,92 €
Period utilization	21.817,99 €
Outstanding Balance	414.827,93 €
<b>PRINCIPAL RESERVE FUND</b>	
Previous Balance	926.397,30 €
Period utilization	5.278,54 €
Outstanding Balance	921.118,76 €
<b>WITHHOLDING TAXES</b>	0,00 €
<b>ISSUE EXPENSES WITHHELD</b>	0,00 €
<b>OTHERS</b>	0,00 €

TOTAL CASH PAID END OF PERIOD	2.046.697,01 €
ORDINARY EXPENSES	577,40 €
MANAGEMENT FEE	8.875,70 €
SWAP COLLECTION CLASS A	178.630,09 €
SWAP PAYMENT CLASS A	-70.333,20 €
CLASS A INTEREST	70.328,08 €
CLASS A REDEMPTION	1.759.520,12 €
CLASS B REDEMPTION	0,00 €
SWAP COLLECTION CLASS B	18.366,46 €
SWAP PAYMENT CLASS B	-11.677,72 €
CLASS B INTEREST	11.677,87 €
SUBORDINATED LOAN A INTEREST	8.219,74 €
SUBORDINATED LOAN A REDEMPTION	27.096,53 €
ADMINISTRATION FEE	15.025,30 €
VARIABLE FEE	30.390,64 €



## F.T.H. HIPOTEBANSA VIII

### CREDIT ENHACEMENT AND SUBORDINATED LOAN

June 15, 2010

CREDIT ENHACEMENT		
CONCEPTS	INITIAL	June 15, 2010
SUBORDINATED ISSUE	2,70 %	9,81 %
PRINCIPAL RESERVE FUND	4.070.955,48 € (1,24 %)	414.827,93 € (1,24 %)
SECONDARY RESERVE FUND	1.805.665,74 € (0,55 %)	921.118,76 € (2,75 %)

SUBORDINATED LOANS		
CONCEPTS	INITIAL	June 15, 2010
SUBORDINATED LOAN A		
Total Outstanding Subordinated Loan	6.999.386,96 €	1.337.377,84 €
Interest Rate	4,440 %	1,93%

## F.T.H. HIPOTEBANSA VIII

### DEFINITIONS

June 15, 2010

**DETERMINATION DATE** Means the date in which the Gestora will carry out the necessary calculations, on behalf of the Fund, for the distribution of the available funds at this date, according with the Order of Priority of Payments.  
All the information regarding the Assets (Outstading Balance of the Credit Rights, arrears' tables, transitory properties, stratification tables, etc.) are refered to this mentioned date.

**NET LOSSES** Those loans which the Originator considers that will not recover (net of recoveries).

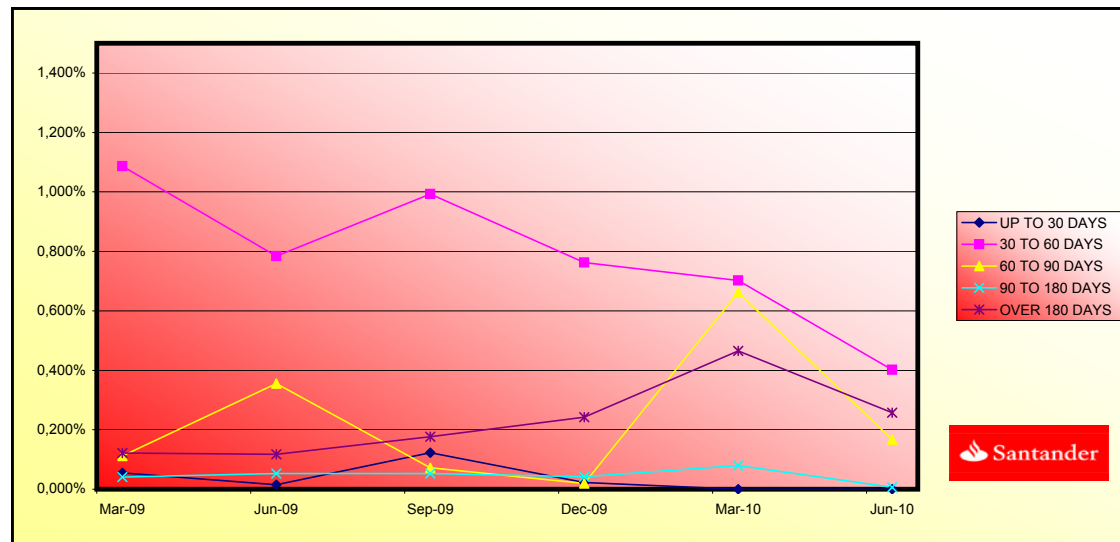
**TRANSITORY PROPERTIES** Those assets in the balance of the Fund as a consequence of a judicial or non-judicial process.

**CONTENTIOUS / JUDICIAL** Loans in which the Originator will take legal actions. This amount is included in the bucket > 180 days in arrears.

**FONDO DE TITULIZACIÓN HIPOTECARIA  
HIPOTEBANSA VIII**

Report date: June 15th, 2010

ARREARS PERFORMANCE						
	09-Mar-09	05-Jun-09	08-Sep-09	08-Dec-09	08-Mar-10	08-Jun-10
<b>UP TO 30 DAYS</b>	0,055%	0,015%	0,122%	0,022%	0,000%	0,000%
<b>30 TO 60 DAYS</b>	1,087%	0,783%	0,993%	0,762%	0,703%	0,401%
<b>60 TO 90 DAYS</b>	0,112%	0,356%	0,072%	0,020%	0,663%	0,167%
<b>90 TO 180 DAYS</b>	0,041%	0,053%	0,053%	0,042%	0,079%	0,006%
<b>OVER 180 DAYS</b>	0,122%	0,118%	0,177%	0,242%	0,466%	0,257%



**FONDO DE TITULIZACIÓN HIPOTECARIA  
HIPOTEBANSA VIII**

**LOAN TO VALUE**

Report date: June 15th, 2010

<b>LTV</b>				
	<b>OUTS, BALANCE</b>	<b>% OUTSTANDING</b>	<b>NUMBER LOANS</b>	<b>% NUM LOANS</b>
<b>0-9,99</b>	1.938,35 €	5,80%	295	20,92%
<b>10-19,99</b>	7.411,06 €	22,21%	506	35,88%
<b>20-29,99</b>	5.413,35 €	16,22%	180	12,76%
<b>30-39,99</b>	8.592,61 €	25,75%	222	15,74%
<b>40-49,99</b>	5.154,05 €	15,44%	115	8,15%
<b>50-59,99</b>	4.512,70 €	13,52%	85	6,02%
<b>60-69,99</b>	316,69 €	0,94%	5	0,35%
<b>70-79,99</b>	27,64 €	0,08%	1	0,07%
<b>&gt;80</b>	1,34 €	0,00%	1	0,07%

**PREPAGOS - HIPOTEBANSA VIII**

15-jun-10

Fecha	Balance Teórico	Balance Real	0,93%	Tasa Prepago Mensual	Tasa Prepago Anualizada	Tasa Prepago Mensual	Tasa Prepago Mensual Anualizada
			Vector Prepago	desde Inicio	desde Inicio	10,77%	
	0,166386						
1	328.303,1		100,00%	100,00%			
2 1-ene-99	327.099,8	324.774,7	99,07%	99,29%	0,71%	8,20%	0,71%
3 1-feb-99	325.891,2	322.035,2	98,15%	98,82%	0,59%	6,89%	0,48%
4 1-mar-99	324.677,2	318.871,9	97,24%	98,21%	0,60%	6,96%	0,61%
5 1-abr-99	323.458,0	315.254,0	96,34%	97,46%	0,64%	7,42%	0,76%
6 1-may-99	322.233,3	312.636,8	95,45%	97,02%	0,60%	7,00%	0,45%
7 1-jun-99	321.003,3	310.219,2	94,56%	96,64%	0,57%	6,61%	0,39%
8 1-jul-99	319.768,4	306.315,7	93,68%	95,79%	0,61%	7,10%	0,88%
9 1-ago-99	318.528,1	303.968,7	92,81%	95,43%	0,58%	6,78%	0,38%
10 1-sep-99	317.282,2	302.078,6	91,95%	95,21%	0,54%	6,34%	0,23%
11 1-oct-99	316.031,0	299.040,4	91,10%	94,62%	0,55%	6,42%	0,61%
12 1-nov-99	314.774,2	295.825,4	90,25%	93,98%	0,56%	6,55%	0,68%
13 1-dic-99	313.511,8	293.273,5	89,42%	93,54%	0,55%	6,46%	0,46%
14 1-ene-00	312.244,0	288.901,9	88,59%	92,52%	0,60%	6,92%	1,09%
15 1-feb-00	310.970,5	285.830,5	87,76%	91,92%	0,60%	6,97%	0,66%
16 1-mar-00	309.691,4	282.881,4	86,95%	91,34%	0,60%	6,99%	0,62%
17 1-abr-00	308.406,8	279.693,0	86,14%	90,69%	0,61%	7,07%	0,72%
18 1-may-00	307.116,4	276.956,5	85,34%	90,18%	0,61%	7,04%	0,56%
19 1-jun-00	305.820,4	274.158,8	84,55%	89,65%	0,61%	7,03%	0,59%
20 1-jul-00	304.519,7	269.788,1	83,77%	88,59%	0,64%	7,36%	1,17%
21 1-ago-00	303.213,3	265.998,8	82,99%	87,73%	0,65%	7,56%	0,98%
22 1-sep-00	301.901,2	263.416,1	82,22%	87,25%	0,65%	7,50%	0,54%
23 1-oct-00	300.583,3	261.530,4	81,46%	87,01%	0,63%	7,31%	0,28%
24 1-nov-00	299.259,6	259.951,5	80,70%	86,86%	0,61%	7,08%	0,16%
25 1-dic-00	297.930,1	257.382,3	79,95%	86,39%	0,61%	7,05%	0,55%
26 1-ene-01	296.595,0	253.846,8	79,21%	85,59%	0,62%	7,20%	0,93%
27 1-feb-01	295.254,1	250.678,5	78,48%	84,90%	0,63%	7,28%	0,80%
28 1-mar-01	293.907,2	247.405,3	77,75%	84,18%	0,64%	7,37%	0,85%
29 1-abr-01	292.554,5	244.333,0	77,03%	83,52%	0,64%	7,43%	0,79%
30 1-may-01	291.195,8	241.627,7	76,31%	82,98%	0,64%	7,43%	0,65%
31 1-jun-01	289.831,1	239.231,8	75,60%	82,54%	0,64%	7,39%	0,53%
32 1-jul-01	288.461,0	235.542,8	74,90%	81,66%	0,65%	7,55%	1,07%
33 1-ago-01	287.084,9	232.144,3	74,21%	80,86%	0,66%	7,66%	0,97%
34 1-sep-01	285.702,7	229.852,5	73,52%	80,45%	0,66%	7,60%	0,51%
35 1-oct-01	284.314,5	226.825,2	72,84%	79,78%	0,66%	7,66%	0,84%
36 1-nov-01	282.920,1	224.355,6	72,16%	79,30%	0,66%	7,64%	0,60%
37 1-dic-01	281.519,6	220.002,5	71,49%	78,15%	0,68%	7,89%	1,45%
38 1-ene-02	280.113,9	216.525,1	70,83%	77,30%	0,69%	8,01%	1,09%
39 1-feb-02	278.702,0	213.322,5	70,17%	76,54%	0,70%	8,10%	0,98%
40 1-mar-02	277.283,9	210.772,1	69,52%	76,01%	0,70%	8,09%	0,69%
41 1-abr-02	275.859,5	208.152,7	68,87%	75,46%	0,70%	8,10%	0,73%
42 1-may-02	274.428,9	204.446,9	68,23%	74,50%	0,72%	8,26%	1,27%
43 1-jun-02	272.992,0	201.084,3	67,60%	73,66%	0,73%	8,36%	1,13%
44 1-jul-02	271.549,9	197.632,6	66,97%	72,78%	0,74%	8,49%	1,19%
45 1-ago-02	270.101,6	194.571,4	66,35%	72,04%	0,74%	8,56%	1,02%
46 1-sep-02	268.646,8	192.391,2	65,74%	71,61%	0,74%	8,52%	0,59%
47 1-oct-02	267.185,6	189.734,9	65,13%	71,01%	0,74%	8,54%	0,84%
48 1-nov-02	265.718,0	186.207,6	64,52%	70,08%	0,75%	8,68%	1,32%
49 1-dic-02	264.244,0	183.383,7	63,92%	69,40%	0,76%	8,73%	0,97%
50 1-ene-03	262.767,9	179.522,5	63,33%	68,32%	0,77%	8,91%	1,56%
51 1-feb-03	261.285,3	176.640,3	62,74%	67,60%	0,78%	8,97%	1,05%
52 1-mar-03	259.796,2	173.695,7	62,16%	66,86%	0,79%	9,04%	1,10%
53 1-abr-03	258.300,5	171.781,2	61,58%	66,50%	0,78%	8,98%	0,53%
54 1-may-03	256.798,3	168.774,8	61,01%	65,72%	0,79%	9,07%	1,18%
55 1-jun-03	255.289,4	165.879,9	60,45%	64,98%	0,80%	9,14%	1,13%
56 1-jul-03	253.801,8	162.667,2	59,89%	64,09%	0,81%	9,25%	1,36%

57	1-ago-03	252.307,6	159.583,4	59,33%	63,25%	0,81%	9,35%	1,31%	14,69%
58	1-sep-03	250.806,8	157.836,5	58,78%	62,93%	0,81%	9,29%	0,50%	5,87%
59	1-oct-03	249.299,5	155.484,2	58,23%	62,37%	0,81%	9,31%	0,89%	10,22%
60	1-nov-03	247.785,5	151.070,7	57,69%	60,97%	0,84%	9,57%	2,24%	23,85%
61	1-dic-03	246.264,8	148.466,0	57,16%	60,29%	0,84%	9,63%	1,12%	12,61%
62	1-ene-04	244.750,9	144.181,1	56,63%	58,91%	0,86%	9,89%	2,29%	24,23%
63	1-feb-04	243.230,3	141.450,7	56,10%	58,16%	0,87%	9,96%	1,28%	14,33%
64	1-mar-04	241.703,1	139.526,7	55,58%	57,73%	0,87%	9,94%	0,74%	8,49%
65	1-abr-04	240.169,1	136.041,0	55,07%	56,64%	0,88%	10,11%	1,88%	20,32%
66	1-may-04	238.628,4	133.342,0	54,55%	55,88%	0,89%	10,19%	1,35%	15,06%
67	1-jun-04	237.080,9	131.087,8	54,05%	55,29%	0,89%	10,21%	1,05%	11,88%
68	1-jul-04	235.541,8	129.049,6	53,55%	54,79%	0,89%	10,22%	0,91%	10,41%
69	1-ago-04	233.995,9	126.740,5	53,05%	54,16%	0,90%	10,26%	1,14%	12,86%
70	1-sep-04	232.443,2	120.081,8	52,56%	52,56%	0,95%	10,85%	4,62%	43,32%
71	1-oct-04	230.883,7	117.674,7	52,07%	50,97%	0,96%	10,91%	1,34%	14,97%
72	1-nov-04	229.317,3	115.106,8	51,59%	50,20%	0,97%	11,00%	1,51%	16,73%
73	1-dic-04	227.744,1	113.483,0	51,11%	49,83%	0,96%	10,96%	0,73%	8,41%
74	1-ene-05	226.177,6	110.418,3	50,63%	48,82%	0,98%	11,12%	2,03%	21,78%
75	1-feb-05	224.604,3	108.164,9	50,16%	48,16%	0,98%	11,17%	1,35%	15,10%
76	1-mar-05	223.024,1	105.899,0	49,70%	47,48%	0,99%	11,23%	1,40%	15,58%
77	1-abr-05	221.436,9	104.153,6	49,24%	47,04%	0,99%	11,23%	0,94%	10,75%
78	1-may-05	219.842,7	102.143,6	48,78%	46,46%	0,99%	11,26%	1,22%	13,68%
79	1-jun-05	218.241,5	100.158,7	48,33%	45,89%	0,99%	11,29%	1,22%	13,74%
80	1-jul-05	216.648,4	98.055,6	47,88%	45,26%	1,00%	11,34%	1,38%	15,36%
81	1-ago-05	215.048,4	96.136,0	47,44%	44,70%	1,00%	11,38%	1,23%	13,78%
82	1-sep-05	213.441,2	94.617,9	46,99%	44,33%	1,00%	11,35%	0,84%	9,61%
83	1-oct-05	211.827,1	93.261,9	46,56%	44,03%	1,00%	11,31%	0,68%	7,89%
84	1-nov-05	210.205,8	91.161,9	46,13%	43,37%	1,00%	11,38%	1,50%	16,56%
85	1-dic-05	208.577,4	89.308,3	45,70%	42,82%	1,00%	11,41%	1,27%	14,20%
86	1-ene-06	206.951,9	87.421,3	45,27%	42,24%	1,01%	11,45%	1,34%	14,99%
87	1-feb-06	205.319,2	85.627,5	44,85%	41,70%	1,01%	11,49%	1,27%	14,25%
88	1-mar-06	203.679,4	83.842,5	44,44%	41,16%	1,02%	11,52%	1,30%	14,49%
89	1-abr-06	202.032,4	82.099,3	44,03%	40,64%	1,02%	11,56%	1,28%	14,33%
90	1-may-06	200.378,1	80.700,2	43,62%	40,27%	1,02%	11,54%	0,89%	10,20%
91	1-jun-06	198.716,5	78.608,3	43,21%	39,56%	1,03%	11,63%	1,78%	19,37%
92	1-jul-06	197.076,8	77.361,9	42,81%	39,25%	1,02%	11,60%	0,77%	8,82%
93	1-ago-06	195.429,9	75.928,8	42,41%	38,85%	1,02%	11,60%	1,03%	11,63%
94	1-sep-06	193.775,8	74.801,2	42,02%	38,60%	1,02%	11,56%	0,64%	7,46%
95	1-oct-06	192.114,3	73.641,8	41,63%	38,33%	1,01%	11,52%	0,70%	8,07%
96	1-nov-06	190.445,6	72.294,3	41,24%	37,96%	1,01%	11,52%	0,97%	11,03%
97	1-dic-06	188.769,5	70.734,4	40,86%	37,47%	1,02%	11,55%	1,29%	14,42%
98	1-ene-07	187.103,7	69.108,7	40,48%	36,94%	1,02%	11,59%	1,43%	15,86%
99	1-feb-07	185.430,5	67.689,7	40,11%	36,50%	1,02%	11,61%	1,17%	13,17%
100	1-mar-07	183.750,0	66.705,8	39,74%	36,30%	1,02%	11,56%	0,55%	6,43%
101	1-abr-07	182.062,0	65.495,7	39,37%	35,97%	1,02%	11,55%	0,90%	10,32%
102	1-may-07	180.366,7	64.489,1	39,00%	35,75%	1,01%	11,50%	0,61%	7,09%
103	1-jun-07	178.663,8	63.339,0	38,64%	35,45%	1,01%	11,49%	0,85%	9,71%
104	1-jul-07	176.965,2	62.096,4	38,28%	35,09%	1,01%	11,49%	1,02%	11,59%
105	1-ago-07	175.259,2	60.696,5	37,93%	34,63%	1,01%	11,52%	1,30%	14,56%
106	1-sep-07	173.545,6	60.072,2	37,57%	34,61%	1,01%	11,42%	0,05%	0,61%
107	1-oct-07	171.824,5	59.296,8	37,22%	34,51%	1,00%	11,35%	0,30%	3,57%
108	1-nov-07	170.095,8	58.528,3	36,88%	34,41%	0,99%	11,28%	0,29%	3,46%
109	1-dic-07	168.359,5	58.065,3	36,54%	34,49%	0,98%	11,16%	-0,23%	-2,82%
110	1-ene-08	166.636,2	55.447,2	36,20%	33,27%	1,00%	11,41%	3,52%	34,96%
111	1-feb-08	164.905,4	53.765,1	35,86%	32,60%	1,01%	11,51%	2,02%	21,68%
112	1-mar-08	163.166,9	53.000,0	35,53%	32,48%	1,01%	11,45%	0,37%	4,38%
113	1-abr-08	161.420,8	51.747,9	35,20%	32,06%	1,01%	11,48%	1,31%	14,60%
114	1-may-08	159.667,0	50.580,2	34,87%	31,68%	1,01%	11,49%	1,18%	13,31%
115	1-jun-08	157.905,5	49.921,4	34,55%	31,61%	1,01%	11,42%	0,20%	2,39%
116	1-jul-08	156.348,7	48.995,3	34,23%	31,34%	1,00%	11,40%	0,88%	10,04%
117	1-ago-08	154.785,0	48.047,8	33,91%	31,04%	1,00%	11,40%	0,94%	10,75%
118	1-sep-08	153.214,5	47.469,1	33,60%	30,98%	1,00%	11,32%	0,19%	2,28%
119	1-oct-08	151.637,0	46.380,8	33,28%	30,59%	1,00%	11,35%	1,28%	14,28%
120	1-nov-08	150.052,6	45.719,0	32,98%	30,47%	0,99%	11,29%	0,39%	4,53%
121	1-dic-08	148.461,3	45.341,64	32,67%	30,54%	0,98%	11,18%	-0,24%	-2,89%
122	1-ene-09	146.979,2	44.446,62	32,37%	30,24%	0,98%	11,18%	0,99%	11,21%
123	1-feb-09	145.490,5	43.783,29	32,07%	30,09%	0,98%	11,14%	0,48%	5,66%
124	1-mar-09	143.995,3	43.271,38	31,77%	30,05%	0,97%	11,07%	0,14%	1,70%
125	1-abr-09	142.493,5	42.694,79	31,47%	29,96%	0,97%	11,01%	0,29%	3,46%
126	1-may-09	140.985,2	41.931,18	31,18%	29,74%	0,97%	10,99%	0,74%	8,50%
127	1-jun-09	139.470,1	41.349,26	30,89%	29,65%	0,96%	10,93%	0,32%	3,73%
128	1-jul-09	137.965,7	40.627,5	30,61%	29,45%	0,96%	10,91%	0,67%	7,80%
129	1-ago-09	136.454,7	39.940,8	30,32%	29,27%	0,96%	10,88%	0,60%	6,99%
130	1-sep-09	134.937,1	39.288,7	30,04%	29,12%	0,95%	10,84%	0,53%	6,13%
131	1-oct-09	133.412,8	38.561,3	29,76%	28,90%	0,95%	10,83%	0,73%	8,42%
132	1-nov-09	131.881,7	37.737,0	29,49%	28,61%	0,95%	10,83%	1,00%	11,38%
133	1-dic-09	130.344,0	37.144,0	29,21%	28,50%	0,95%	10,79%	0,41%	4,81%
134	1-ene-10	128.821,5	36.218,3	28,94%	28,12%	0,95%	10,82%	1,34%	14,95%
135	1-feb-10	127.292,4	35.673,8	28,67%	28,03%	0,94%	10,77%	0,32%	3,77%
136	1-mar-10	125.756,6	35.213,4	28,41%	28,00%	0,94%	10,70%	0,09%	1,02%
137	1-abr-10	124.214,0	34.560,9	28,14%	27,82%	0,94%	10,67%	0,63%	7,35%
138	1-may-10	122.664,6	34.006,8	27,88%	27,72%	0,93%	10,63%	0,36%	4,24%
139	1-jun-10	121.108,4	33.453,9	27,62%	27,62%	0,93%	10,58%	0,36%	4,26%

DEAL 54.625  
 MEZZ. DECLINN 10,00%  
 MEZZ. STOPS DECLINN 1,00%  
 VIDA RESIDUAL DESDE 15-jun-10

0,49 0,51

FECHA	Principal disponible para la amortización	SERIE A		SERIE B		SERIE A		SERIE B	
		SERIE A	SERIE B	PRINCIPAL	VIDA MEDIA	PRINCIPAL	VIDA MEDIA		
			328.302.862,02						
		319.437.933	8.864.928,54						
15-ene-99	0	319.437.933	8.864.929	0	0	0	0	0	0
15-feb-99	1	0	319.437.933	8.864.929	0	0	0	0	0
15-mar-99	1	9.431.213	319.437.933	8.864.929	9.431.213	-38.762.286.931	0	0	0
15-abr-99	1	0	310.006.720	8.864.929	0	0	0	0	0
15-may-99	1	0	310.006.720	8.864.929	0	0	0	0	0
15-jun-99	1	8.652.676	310.006.720	8.864.929	8.652.676	-34.766.450.745	0	0	0
15-jul-99	1	0	301.354.044	8.864.929	0	0	0	0	0
15-ago-99	1	0	301.354.044	8.864.929	0	0	0	0	0
15-sep-99	1	8.140.666	301.354.044	8.864.929	8.140.666	-31.960.255.446	0	0	0
15-oct-99	1	0	293.213.378	8.864.929	0	0	0	0	0
15-nov-99	1	0	293.213.378	8.864.929	0	0	0	0	0
15-dic-99	1	8.805.013	293.213.378	8.864.929	8.805.013	-33.767.223.403	0	0	0
15-ene-00	1	0	284.408.366	8.864.929	0	0	0	0	0
15-feb-00	1	0	284.408.366	8.864.929	0	0	0	0	0
15-mar-00	1	10.392.181	284.408.366	8.864.929	10.392.181	-38.908.324.024	0	0	0
15-abr-00	1	0	274.016.185	8.864.929	0	0	0	0	0
15-may-00	1	0	274.016.185	8.864.929	0	0	0	0	0
15-jun-00	1	8.722.554	274.016.185	8.864.929	8.722.554	-31.854.765.785	0	0	0
15-jul-00	1	0	265.293.631	8.864.929	0	0	0	0	0
15-ago-00	1	0	265.293.631	8.864.929	0	0	0	0	0
15-sep-00	1	10.742.700	265.293.631	8.864.929	10.742.700	-38.244.011.161	0	0	0
15-oct-00	1	0	254.550.932	8.864.929	0	0	0	0	0
15-nov-00	1	0	254.550.932	8.864.929	0	0	0	0	0
15-dic-00	1	6.033.856	254.550.932	8.864.929	6.033.856	-20.931.448.040	0	0	0
15-ene-01	1	0	248.517.075	8.864.929	0	0	0	0	0
15-feb-01	1	0	248.517.075	8.864.929	0	0	0	0	0
15-mar-01	1	9.976.965	248.517.075	8.864.929	9.976.965	-33.712.166.309	0	0	0
15-abr-01	1	0	238.540.110	8.864.929	0	0	0	0	0
15-may-01	1	0	238.540.110	8.864.929	0	0	0	0	0
15-jun-01	1	8.173.491	238.540.110	8.864.929	8.173.491	-26.866.265.005	0	0	0
15-jul-01	1	0	230.366.619	8.864.929	0	0	0	0	0
15-ago-01	1	0	230.366.619	8.864.929	0	0	0	0	0
15-sep-01	1	9.379.291	230.366.619	8.864.929	9.379.291	-29.966.833.510	0	0	0
15-oct-01	1	0	220.987.328	8.864.929	0	0	0	0	0
15-nov-01	1	0	220.987.328	8.864.929	0	0	0	0	0
15-dic-01	1	9.850.010	220.987.328	8.864.929	9.850.010	-30.574.431.031	0	0	0
15-ene-02	1	0	211.137.318	8.864.929	0	0	0	0	0
15-feb-02	1	0	211.137.318	8.864.929	0	0	0	0	0
15-mar-02	1	9.230.375	211.137.318	8.864.929	9.230.375	-27.820.351.636	0	0	0
15-abr-02	1	0	201.906.943	8.864.929	0	0	0	0	0
15-may-02	1	0	201.906.943	8.864.929	0	0	0	0	0
15-jun-02	1	9.687.811	201.906.943	8.864.929	9.687.811	-28.307.785.086	0	0	0
15-jul-02	1	0	192.219.131	8.864.929	0	0	0	0	0
15-ago-02	1	0	192.219.131	8.864.929	0	0	0	0	0
15-sep-02	1	8.693.066	192.219.131	8.864.929	8.693.066	-24.601.377.601	0	0	0
15-oct-02	1	0	183.526.065	8.864.929	0	0	0	0	0
15-nov-02	1	0	183.526.065	8.864.929	0	0	0	0	0
15-dic-02	1	9.007.561	183.526.065	8.864.929	9.007.561	-24.671.708.812	0	0	0
15-ene-03	1	0	174.518.504	8.864.929	0	0	0	0	0
15-feb-03	1	0	174.518.504	8.864.929	0	0	0	0	0
15-mar-03	1	9.687.974	174.518.504	8.864.929	9.687.974	-25.663.442.649	0	0	0
15-abr-03	1	0	164.830.530	8.864.929	0	0	0	0	0
15-may-03	1	0	164.830.530	8.864.929	0	0	0	0	0
15-jun-03	1	7.815.761	164.830.530	8.864.929	7.815.761	-19.984.900.212	0	0	0
15-jul-03	1	0	157.014.770	8.864.929	0	0	0	0	0
15-ago-03	1	0	157.014.770	8.864.929	0	0	0	0	0
15-sep-03	1	8.043.482	157.014.770	8.864.929	8.043.482	-19.827.181.922	0	0	0
15-oct-03	1	0	148.971.288	8.864.929	0	0	0	0	0
15-nov-03	1	0	148.971.288	8.864.929	0	0	0	0	0

DEAL 54.625  
 MEZZ. DECLINN 10,00%  
 MEZZ. STOPS DECLINN 1,00%  
 VIDA RESIDUAL DESDE 15-jun-10

0,49 0,51

				SERIE A		SERIE B	
15-dic-03	1	9.370.470	148.971.288	8.864.929	9.370.470	-22.245.496.231	0
15-ene-04	1	0	139.600.818	8.864.929	0	0	0
15-feb-04	1	0	139.600.818	8.864.929	0	0	0
15-mar-04	1	8.939.311	139.600.818	8.864.929	8.939.311	-20.408.447.196	0
15-abr-04	1	0	130.661.507	8.864.929	0	0	0
15-may-04	1	0	130.661.507	8.864.929	0	0	0
15-jun-04	1	8.438.837	130.661.507	8.864.929	8.438.837	-18.489.490.925	0
15-jul-04	1	0	122.222.670	8.864.929	0	0	0
15-ago-04	1	0	122.222.670	8.864.929	0	0	0
15-sep-04	1	11.006.061	122.222.670	8.864.929	11.006.061	-23.101.722.480	0
15-oct-04	1	0	111.216.609	8.864.929	0	0	0
15-nov-04	1	0	111.216.609	8.864.929	0	0	0
15-dic-04	1	6.598.759	111.216.609	8.864.929	6.598.759	-13.250.308.454	0
15-ene-05	1	0	104.617.850	8.864.929	0	0	0
15-feb-05	1	0	104.617.850	8.864.929	0	0	0
15-mar-05	1	7.584.071	104.617.850	8.864.929	7.584.071	-14.546.247.334	0
15-abr-05	1	0	97.033.779	8.864.929	0	0	0
15-may-05	1	0	97.033.779	8.864.929	0	0	0
15-jun-05	1	5.740.229	97.033.779	8.864.929	5.740.229	-10.481.658.391	0
15-jul-05	1	0	91.293.550	8.864.929	0	0	0
15-ago-05	1	0	91.293.550	8.864.929	0	0	0
15-sep-05	1	5.540.787	91.293.550	8.864.929	5.277.466	-9.151.126.713	263.320
15-oct-05	1	0	86.016.084	8.601.608	0	0	0
15-nov-05	1	0	86.016.084	8.601.608	0	0	0
15-dic-05	1	5.309.601	86.016.084	8.601.608	4.826.910	-7.930.612.936	482.691
15-ene-06	1	0	81.189.174	8.118.917	0	0	0
15-feb-06	1	0	81.189.174	8.118.917	0	0	0
15-mar-06	1	5.465.879	81.189.174	8.118.917	4.968.981	-7.716.827.182	496.898
15-abr-06	1	0	76.220.193	7.622.019	0	0	0
15-may-06	1	0	76.220.193	7.622.019	0	0	0
15-jun-06	1	5.234.193	76.220.193	7.622.019	4.758.357	-6.951.959.524	475.836
15-jul-06	1	0	71.461.836	7.146.184	0	0	0
15-ago-06	1	0	71.461.836	7.146.184	0	0	0
15-sep-06	1	3.807.109	71.461.836	7.146.184	3.461.008	-4.738.120.624	346.101
15-oct-06	1	0	68.000.828	6.800.083	0	0	0
15-nov-06	1	0	68.000.828	6.800.083	0	0	0
15-dic-06	1	4.066.723	68.000.828	6.800.083	3.697.021	-4.724.792.989	369.702
15-ene-07	1	0	64.303.807	6.430.381	0	0	0
15-feb-07	1	0	64.303.807	6.430.381	0	0	0
15-mar-07	1	4.028.676	64.303.807	6.430.381	3.662.433	-4.350.969.896	366.243
15-abr-07	1	0	60.641.374	6.064.137	0	0	0
15-may-07	1	0	60.641.374	6.064.137	0	0	0
15-jun-07	1	3.366.789	60.641.374	6.064.137	3.060.717	-3.354.546.061	306.072
15-jul-07	1	0	57.580.657	5.758.066	0	0	0
15-ago-07	1	0	57.580.657	5.758.066	0	0	0
15-sep-07	1	3.266.740	57.580.657	5.758.066	2.969.764	-2.981.642.691	296.976
15-oct-07	1	0	54.610.893	5.461.089	0	0	0
15-nov-07	1	0	54.610.893	5.461.089	0	0	0
15-dic-07	1	2.006.970	54.610.893	5.461.089	1.824.518	-1.665.785.100	182.452
15-ene-08	1	0	52.786.375	5.278.637	0	0	0
15-feb-08	1	0	52.786.375	5.278.637	0	0	0
15-mar-08	1	5.065.260	52.786.375	5.278.637	4.604.782	-3.785.130.655	460.478
15-abr-08	1	0	48.181.593	4.818.159	0	0	0
15-may-08	1	0	48.181.593	4.818.159	0	0	0
15-jun-08	1	3.078.598	48.181.593	4.818.159	2.798.726	-2.043.069.734	279.873
15-jul-08	1	0	45.382.868	4.538.287	0	0	0
15-ago-08	1	0	45.382.868	4.538.287	0	0	0
15-sep-08	1	2.452.322	45.382.868	4.538.287	2.229.383	-1.422.346.627	222.938
15-oct-08	1	0	43.153.484	4.315.348	0	0	0
15-nov-08	1	0	43.153.484	4.315.348	0	0	0
15-dic-08	1	2.127.441	43.153.484	4.315.348	1.934.037	-1.057.918.319	193.404
15-ene-09	1	0	41.219.447	4.121.945	0	0	0
15-feb-09	1	0	41.219.447	4.121.945	0	0	0
15-mar-09	1	2.070.256	41.219.447	4.121.945	1.882.050	-860.097.074	188.205



DEAL 54.625  
 MEZZ. DECLINN 10,00%  
 MEZZ. STOPS DECLINN 1,00%  
 VIDA RESIDUAL DESDE 15-jun-10

0,49

0,51

				<b>SERIE A</b>		<b>SERIE B</b>	
15-abr-09	1	0	39.337.396	3.933.740	0	0	0
15-may-09	1	0	39.337.396	3.933.740	0	0	0
15-jun-09	1	1.922.123	39.337.396	3.933.740	1.747.384	-637.795.197	174.738
15-jul-09	1	0	37.590.012	3.759.001	0	0	0
15-ago-09	1	0	37.590.012	3.759.001	0	0	0
15-sep-09	1	2.060.527	37.590.012	3.759.001	1.873.207	-511.385.427	187.321
15-oct-09	1	0	35.716.806	3.571.681	0	0	0
15-nov-09	1	0	35.716.806	3.571.681	0	0	0
15-dic-09	1	2.144.690	35.716.806	3.571.681	1.949.718	-354.848.601	194.972
15-ene-10	1	0	33.767.088	3.376.709	0	0	0
15-feb-10	1	0	33.767.088	3.376.709	0	0	0
15-mar-10	1	1.930.663	33.767.088	3.376.709	1.836.960	-169.000.360	93.703
15-abr-10	1	0	31.930.128	3.283.006	0	0	0
15-may-10	1	0	31.930.128	3.283.006	0	0	0
15-jun-10	1	1.759.516	31.930.128	3.283.006	1.759.516	0	0
15-jul-10	1	0	30.170.612	3.283.006	0	0	0
15-ago-10	1	0	30.170.612	3.283.006	0	0	0
15-sep-10	1	2.065.200	30.170.612	3.283.006	2.065.200	189.998.356	0
16-oct-10	2	0	28.105.412	3.283.006	0	0	0
16-nov-10	3	0	28.105.412	3.283.006	0	0	0
17-dic-10	4	31.388.666	28.105.412	3.283.006	28.105.412	5.199.501.248	3.283.006
							607.356.090