



FTH.:HIPOTEBANSA IX

FRANCISCO FORTES CLAVERO

ANALYST

SANTANDER DE TITULIZACION, S.G.F.T, S.A.

CIUDAD GRUPO SANTANDER

28660 BOADILLA DEL MONTE

ffortes@gruposantander.com

Tel: 912893290



NAME OF THE FUND:

FTH.:HIPOTEBANSA IX

INFORMATION AT:

QUARTER/SEMESTER: November 18, 2011 - February 20, 2012 YEAR: 2012

Acting on behalf of Santander de Titulización S.G.F.T., S.A. as General Manager:	Signature:
IGNACIO ORTEGA GAVARA - GENERAL MANAGER	

I. DATA OF THE FUND

Constitution Date	November 10, 1999	Paying Agent	BANCO SANTANDER	
Disbursement Date	November 15, 1999	Negotiation Market	AIAF	
Final Date of Redemption	August 18, 2029	Ratings Agencies	MOODY'S ESPAÑA	
			FITCH RATINGS	
Management Company	SANTANDER DE TITULIZACION, S.G.F.T, S.A.	Rating	Initial	Current
Credit Rights 's Seller	BANCO SANTANDER	CLASS A	Aaa/AAA	Aa2/AAA
		CLASS B	A2/A	A2/AA

II. SECURITIES ISSUED CHARGED TO THE FUND: SECURITISATION BONDS

CLASS PRIORITY ISIN CODE	NUM BONDS	NOMINAL			
			Initial	Current	%Act/In
CLASS A ES0338676002	5.052	Nominal per Bond	100.000,00	9.198,92	
		Total Nominal	505.200.000,00	46.472.943,84	9,20 %
CLASS B ES0338676010	140	Nominal per Bond	100.000,00	37.085,71	
		Total Nominal	14.000.000,00	5.191.999,40	37,09 %

REDEMPTION AND INTEREST OF THE BONDS					
Current			Next		
Payment Date of the Current Period February 20, 2012			Next Payment Date May 18, 2012		
	Redemption of the Bonds	Gross Interest	Interest Rate	Gross Interest Next Coupon	Net Interest Next Coupon
CLASS A	596,07 €	44,19 €	1,3292 %	29,48 €	23,29 €
CLASS B	0,00 €	213,81 €	1,8159 %	162,36 €	128,26 €
Accrued amortisation due not payed	0,00 €				
Scheduled Amortisation	NO				

III. ASSET PURCHASED BY THE FUND: CREDIT RIGHTS

CREDIT RIGHTS	ISSUE DATE	CURRENT DATE
Numbre of CR's	8.501	2.081
CR's Outstanding to be amortised	519.200.103,03	51.664.934,85
CR's Outstanding per Loan to be amortised	61.075,18	24.826,97
Interest Rate	4,41 %	2,64 %

PREPAYMENT RATE	CURRENT SITUATION
Monthly Single Rate	5,78 %
Average Monthly Single Rate	5,36 %
Constant Prepayment Rate from Constitution	9,82 %

CURRENT DELINQUENCY	Up to 1 month	From 1 to 6 months	Greater than 6 months
Debt Due (Principal + Interest)	192,94	8.948,63	0,00
Debt to be amortised	0,00	0,00	51.657.464,75
Total Debt	192,94	8.948,63	51.657.464,75

FTH.:HIPOTEBANSA IX

QUARTERLY BONDS PAYOUT REPORT

February 20, 2012

BONDS. PRINCIPAL	
Previous Balance	54.676.288,88 €
Principal Amortised	3.011.345,64 €
Outstanding Balance	51.664.943,24 €
% of Initial Balance	9,95 %
Principal accrued and unpaid	0,00 €

DATA	
Determination Date	February 13, 2012
Payment Date	February 20, 2012
Last Payment Date	November 18, 2011
Number of Days (Act/360)	94
Reference Interest Rate (%)	1,041 %
Next Payment Date	May 18, 2012

INTEREST PAID	
CLASS A	223.247,88 €
CLASS B	29.933,40 €
Interest accrued and unpaid	0,00 €

RESIDUAL LIFE (YEARS)		
	INITIAL	February 20, 2012
CLASS A	7,5	0,25
CLASS B	14,2	0,25

FTH.:HIPOTEBANSA IX

QUARTERLY COLLATERAL REPORT

February 20, 2012

PRINCIPAL	
Previous Balance	54.676.291,42 €
Principal Amortised	3.011.356,57 €
Outstanding Balance	51.664.934,85 €
Number of Credit Rights	2.081
LTV	21,97%

INTEREST	
Interest received during relevant period	372.292,34 €
Interest accrued during relevant period	381.282,76 €

PRINCIPAL BALANCE IN ARREARS					
	UP to 30 DAYS	30 to 60 DAYS	60 to 90 DAYS	90 to 180 DAYS	180 to 365 DAYS
Principal Balance in Arrears	192,94 €	1.783,29 €	1.180,78 €	4.313,09 €	0,00 €
Interest accrued on Credit Rights in Arrears	0,00 €	407,07 €	445,24 €	819,16 €	0,00 €
Outstanding Balance	10.403,81 €	142.249,45 €	75.483,75 €	98.647,07 €	270.776,24 €
Number of Credit Rights	1	5	2	2	4
% of Outstanding Balance	0,02 %	0,28 %	0,15 %	0,19 %	0,52%

(1) This report does not include loans in arrears from 1 to 15 days, as it is considered a technical arrear with a high percentage of recovery.

FTH.:HIPOTEBANSA IX**QUARTERLY COLLATERAL REPORT**

February 20, 2012

CONTENTIOUS / JUDICIAL	
Last balance	300.238,20 €
Difference in Actual Period	-29.461,96 €
Current balance	270.776,24 €
Contentious CR's number	21

TRANSITORY PROPERTIES	
Last balance	40.366,81 €
Difference in Actual Period	0,00 €
Current balance	40.366,81 €
Transitory properties CR's number	1

NET LOSS	
Last balance	0,00 €
Difference in Actual Period	53.819,62 €
Current balance	53.819,62 €

FTH.:HIPOTEBANSA IX

QUARTERLY REPORT - ALLOCATION OF CASH

February 20, 2012

TOTAL CASH RECEIVED END OF PERIOD	3.452.316,67 €
CASH RECEIVED - PRINCIPAL	
Amortisation of Credit Rights	3.008.830,96 €
CASH RECEIVED - INTEREST	
Interest received from Credit Rights	372.292,34
Interest received under GIC	21.742,54 €
CONTENTIOUS	3.081,29 €
INCOMES/EXPENSES OF TRANSTORY PROPERTIES	-5,35
RESERVE FUNDS	46.374,89 €
OTHERS	0,00 €

TREASURY ACCOUNT STATEMENT	2.353.239,99 €
PRINCIPAL RESERVE FUND	
Previous Balance	677.986,01 €
Period utilization	37.340,82 €
Outstanding Balance	640.645,19 €
PRINCIPAL RESERVE FUND	
Previous Balance	1.721.628,87 €
Period utilization	9.034,07 €
Outstanding Balance	1.712.594,80 €
WITHHOLDING TAXES	0,00 €
ISSUE EXPENSES WITHHELD	0,00 €
OTHERS	0,00 €

TOTAL CASH PAID END OF PERIOD	3.452.316,67 €
ORDINARY EXPENSES	2.219,79 €
MANAGEMENT FEE	20.175,00 €
SWAP A COLLECTION	265.444,86 €
SWAP A PAYMENT	-223.273,11 €
CLASS A INTEREST	223.247,88 €
CLASS A REDEMPTION	3.011.345,64 €
CLASS B REDEMPTION	0,00 €
SWAP B COLLECTION	27.851,05 €
SWAP B PAYMENT	-29.934,05 €
CLASS B INTEREST	29.933,40 €
SUBORDINATED LOAN A INTEREST	12.593,88 €
SUBORDINATED LOAN B INTEREST	0,00 €
SUBORDINATED LOAN A REDEMPTION	66.052,51 €
SUBORDINATED LOAN B REDEMPTION	0,00 €
RESERVE FUND SUBORDINATED LOAN REDEMPTION	0,00 €
ADMINISTRATION FEE	12.000,00 €
VARIABLE FEE	34.659,82 €

FTH.:HIPOTEBANSA IX

CREDIT ENHACEMENT AND SUBORDINATED LOAN

February 20, 2012

CREDIT ENHACEMENT		
CONCEPTS	INITIAL	February 20, 2012
SUBORDINATED ISSUE	97,30 %	10,05 %
PRINCIPAL RESERVE FUND	6.438.080,00 € (1,24 %)	640.645,19 € (1,24 %)
SECONDARY RESERVE FUND	3.115.200,00 € (0,60 %)	1.712.594,80 € (3,31 %)

SUBORDINATED LOANS		
CONCEPTS	INITIAL	February 20, 2012
SUBORDINATED LOAN A		
Total Outstanding Subordinated Loan	10.979.289,12 €	2.354.827,21 €
Interest Rate	3,760 %	1,99%

FTH.:HIPOTEBANSA IX

TRIGGERS OF THE MODEL

February 20, 2012

BOND's TRIGGERS	
IF 1) IS HIGHER THAN 2) CLASS B IS NOT AMORTISED	
1) CREDIT RIGHTS IN ARREARS OVER 90 DAYS	369.423,31 €
2) 7% CREDIT RIGHTS OUTSTANDING BALANCE	3.616.545,44 €

CLASS B SHOULD HAVE BEEN AMORTIZED BUT IT HAS REACHED ITS MINIMUM LEVEL

FTH.:HIPOTEBANSA IX

DEFINITIONS

February 20, 2012

DETERMINATION DATE Means the date in which the Gestora will carry out the necessary calculations, on behalf of the Fund, for the distribution of the available funds at this date, according with the Order of Priority of Payments.

All the information regarding the Assets (Outstading Balance of the Credit Rights, arrears' tables, transitory properties, stratiphication tables, etc.) are refered to this mentioned date.

WRITE OFF Those loans that at a given date are unpaid for a period equal or higher to 12 or 18 months (according to Prospectus) of arrears in due payments.

NET LOSSES Those loans which the Originator considers that will not recover (net of recoveries).

FAILED LOANS Those loans which the Originator considers that will not recover, or those loans that at a given date are unpaid for a period equal or higher to 12 or 18 months.

CUMULATIVE FAILED LOANS Accumulated outstanding balance of the failed loans without taking into account the recovered amount.

TRANSITORY PROPERTIES Those assets in the balance of the Fund as a consequence of a judicial or non-judicial process.

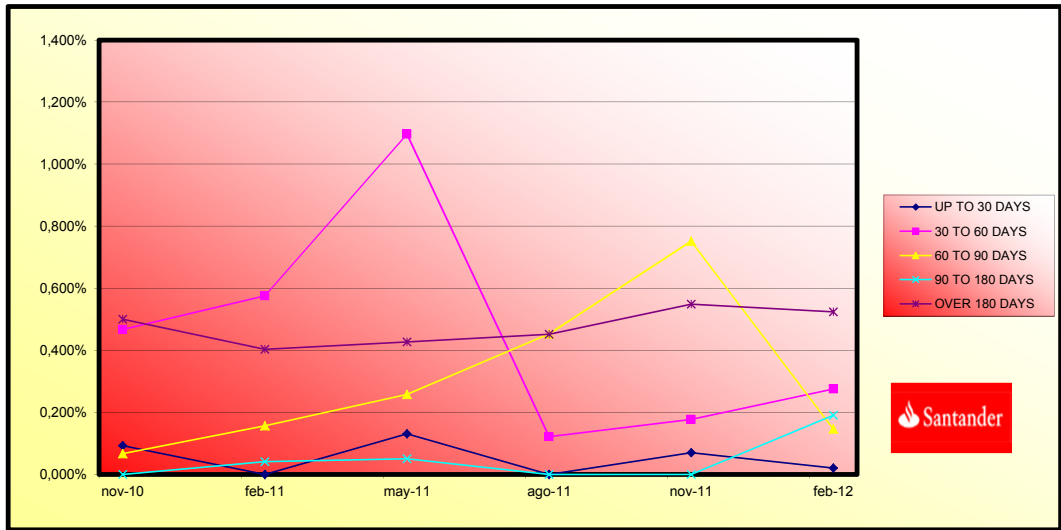
CONTENTIOUS / JUDICIAL Loans in which the Originator will take legal actions. This amount is included in the bucket > 180 days in arrears.



**FONDO DE TITULIZACIÓN HIPOTECARIA
HIPOTEBANSA IX**

Report date: February 20th, 2012

ARREARS PERFORMANCE						
	November 11, 2010	February 11, 2011	May 11, 2011	August 10, 2011	November 11, 2011	February 13, 2012
UP TO 30 DAYS	0,093%	0,000%	0,131%	0,000%	0,070%	0,020%
30 TO 60 DAYS	0,468%	0,575%	1,097%	0,122%	0,177%	0,275%
60 TO 90 DAYS	0,067%	0,156%	0,257%	0,453%	0,752%	0,146%
90 TO 180 DAYS	0,000%	0,041%	0,050%	0,000%	0,000%	0,191%
OVER 180 DAYS	0,501%	0,404%	0,427%	0,451%	0,549%	0,524%





FONDO DE TITULIZACIÓN HIPOTECARIA
HIPOTEBANSA IX

LOAN TO VALUE

Report date: February 20th, 2012

LTV				
	OUTS, BALANCE	% OUTSTANDING	NUMBER LOANS	% NUM LOANS
0-9,99	4.256.598,79 €	8,23%	564	26,97%
10-19,99	7.705.388,84 €	14,90%	554	26,49%
20-29,99	8.724.804,92 €	16,87%	275	13,15%
30-39,99	14.070.175,53 €	27,21%	384	18,36%
40-49,99	12.649.153,52 €	24,46%	239	11,43%
50-59,99	4.072.385,10 €	7,87%	71	3,40%
60-69,99	234.797,29 €	0,45%	4	0,19%
70-79,99	0,00 €	0,00%	0	0,00%
>80	0,00 €	0,00%	0	0,00%

PREPAGOS -HIPOTEBANSA IX

feb-12

Fecha	Balance Teórico	Balance Real	0,86%		Tasa Prepago Mensual desde Inicio	Tasa Prepago Anualizada desde Inicio	Tasa Prepago Mensual	Tasa Prepago Anualizada
			Vector Prepago			9,97%		
		166,386						
	519.200.103,03		100,00%	100,00%				
1-dic-99	517.273.354,38	514.246.870,90	99,14%	99,41%	0,59%	6,80%	0,59%	6,80%
1-ene-00	515.339.524,93	508.947.707,56	98,29%	98,76%	0,62%	7,21%	0,66%	7,63%
1-feb-00	513.398.588,65	505.121.375,69	97,45%	98,39%	0,54%	6,29%	0,38%	4,43%
1-mar-00	511.450.519,44	499.861.570,26	96,61%	97,73%	0,57%	6,64%	0,66%	7,69%
1-abr-00	509.495.291,07	495.386.066,03	95,79%	97,23%	0,56%	6,52%	0,52%	6,01%
1-may-00	507.532.877,23	491.622.218,05	94,96%	96,87%	0,53%	6,17%	0,38%	4,42%
1-jun-00	505.563.251,53	486.377.194,60	94,15%	96,21%	0,55%	6,42%	0,68%	7,88%
1-jul-00	503.587.019,11	480.601.509,64	93,34%	95,44%	0,58%	6,77%	0,80%	9,19%
1-ago-00	501.603.524,03	472.040.539,01	92,54%	94,11%	0,67%	7,78%	1,39%	15,49%
1-sep-00	499.612.739,62	467.890.954,79	91,75%	93,65%	0,65%	7,57%	0,48%	5,66%
1-oct-00	497.614.639,07	465.784.380,90	90,96%	93,60%	0,60%	6,96%	0,05%	0,60%
1-nov-00	495.609.195,50	463.886.447,62	90,18%	93,60%	0,55%	6,40%	0,00%	0,05%
1-dic-00	493.596.381,92	458.942.813,84	89,41%	92,98%	0,56%	6,50%	0,66%	7,66%
1-ene-01	491.576.289,36	452.786.506,38	88,64%	92,11%	0,59%	6,80%	0,94%	10,67%
1-feb-01	489.548.772,95	448.115.962,73	87,88%	91,54%	0,59%	6,83%	0,62%	7,21%
1-mar-01	487.513.805,42	443.808.204,78	87,13%	91,04%	0,59%	6,80%	0,55%	6,38%
1-abr-01	485.471.359,39	439.161.069,40	86,38%	90,46%	0,59%	6,83%	0,63%	7,31%
1-may-01	483.421.407,37	435.254.045,03	85,64%	90,04%	0,58%	6,76%	0,47%	5,49%
1-jun-01	481.363.921,77	430.496.752,68	84,91%	89,43%	0,59%	6,81%	0,67%	7,75%
1-jul-01	479.299.514,33	425.433.127,87	84,18%	88,76%	0,59%	6,90%	0,75%	8,64%
1-ago-01	477.227.520,20	420.990.606,38	83,46%	88,22%	0,60%	6,91%	0,61%	7,13%
1-sep-01	475.147.911,48	417.508.522,08	82,74%	87,87%	0,59%	6,81%	0,39%	4,62%
1-oct-01	473.060.660,21	413.061.822,10	82,03%	87,32%	0,59%	6,83%	0,63%	7,29%
1-nov-01	470.965.738,28	407.641.087,24	81,33%	86,55%	0,60%	6,97%	0,87%	9,99%
1-dic-01	468.863.117,52	399.032.451,49	80,63%	85,11%	0,64%	7,45%	1,67%	18,33%
1-ene-02	466.755.584,62	393.079.874,99	79,94%	84,22%	0,66%	7,62%	1,05%	11,86%
1-feb-02	464.640.306,53	388.452.367,90	79,25%	83,60%	0,66%	7,65%	0,73%	8,39%
1-mar-02	462.517.254,80	383.757.021,63	78,57%	82,97%	0,66%	7,69%	0,76%	8,70%
1-abr-02	460.386.400,85	378.391.294,46	77,90%	82,19%	0,67%	7,80%	0,94%	10,73%
1-may-02	458.247.716,02	372.903.985,70	77,23%	81,38%	0,68%	7,91%	0,99%	11,26%
1-jun-02	456.101.171,51	368.679.146,19	76,57%	80,83%	0,68%	7,91%	0,67%	7,72%
1-jul-02	453.948.238,08	362.792.751,73	75,91%	79,92%	0,70%	8,06%	1,13%	12,75%
1-ago-02	451.787.392,62	358.429.649,87	75,26%	79,34%	0,70%	8,07%	0,73%	8,42%
1-sep-02	449.618.606,05	354.559.870,07	74,62%	78,86%	0,70%	8,04%	0,60%	7,00%
1-oct-02	447.441.849,19	349.649.251,63	73,98%	78,14%	0,70%	8,11%	0,91%	10,34%
1-nov-02	445.257.092,72	344.321.093,71	73,34%	77,33%	0,71%	8,21%	1,04%	11,80%
1-dic-02	443.064.307,32	339.700.679,52	72,72%	76,67%	0,72%	8,25%	0,85%	9,78%
1-ene-03	440.869.601,53	334.706.645,45	72,09%	75,92%	0,72%	8,33%	0,98%	11,14%
1-feb-03	438.666.830,19	329.794.773,46	71,47%	75,18%	0,73%	8,40%	0,97%	11,07%
1-mar-03	436.455.963,67	324.874.307,75	70,86%	74,43%	0,74%	8,48%	0,99%	11,29%
1-abr-03	434.236.972,22	320.516.211,10	70,25%	73,81%	0,74%	8,50%	0,84%	9,60%
1-may-03	432.009.825,97	317.569.271,92	69,65%	73,51%	0,73%	8,42%	0,41%	4,80%
1-jun-03	429.774.494,96	313.627.463,11	69,05%	72,97%	0,73%	8,42%	0,73%	8,39%
1-jul-03	427.536.599,86	309.422.926,13	68,46%	72,37%	0,73%	8,44%	0,82%	9,45%
1-ago-03	425.290.480,50	304.321.001,66	67,87%	71,56%	0,74%	8,54%	1,13%	12,74%
1-sep-03	423.036.106,64	300.555.032,17	67,29%	71,05%	0,74%	8,53%	0,71%	8,21%
1-oct-03	420.773.447,96	295.896.500,15	66,72%	70,32%	0,75%	8,60%	1,02%	11,58%
1-nov-03	418.502.474,01	290.687.097,46	66,14%	69,46%	0,76%	8,71%	1,23%	13,77%
1-dic-03	416.223.154,24	285.361.598,63	65,58%	68,56%	0,77%	8,83%	1,29%	14,47%
1-ene-04	413.951.066,45	279.811.122,32	65,01%	67,60%	0,78%	8,97%	1,41%	15,64%
1-feb-04	411.670.628,74	275.986.596,49	64,46%	67,04%	0,78%	8,98%	0,82%	9,41%
1-mar-04	409.381.810,42	271.452.769,24	63,90%	66,31%	0,79%	9,05%	1,09%	12,35%
1-abr-04	407.084.580,69	266.739.668,09	63,36%	65,52%	0,79%	9,13%	1,18%	13,29%
1-may-04	404.778.908,64	262.942.079,43	62,81%	64,96%	0,80%	9,14%	0,86%	9,87%
1-jun-04	402.464.763,25	259.180.705,32	62,27%	64,40%	0,80%	9,16%	0,86%	9,89%
1-jul-04	400.168.155,32	254.983.245,12	61,74%	63,72%	0,80%	9,21%	1,05%	11,95%
1-ago-04	397.863.107,36	251.029.913,10	61,21%	63,09%	0,80%	9,24%	0,98%	11,15%
1-sep-04	395.549.588,34	236.803.000,96	60,69%	59,87%	0,88%	10,07%	5,12%	46,75%
1-oct-04	393.227.567,14	232.513.922,02	60,17%	59,13%	0,89%	10,14%	1,23%	13,82%
1-nov-04	390.897.012,52	228.535.085,18	59,65%	58,46%	0,89%	10,18%	1,13%	12,70%
1-dic-04	388.557.893,10	224.469.127,32	59,14%	57,77%	0,90%	10,23%	1,19%	13,36%
1-ene-05	386.229.077,36	219.728.146,83	58,63%	56,89%	0,91%	10,34%	1,52%	16,81%
1-feb-05	383.891.703,23	215.699.659,21	58,13%	56,19%	0,91%	10,40%	1,24%	13,86%
1-mar-05	381.545.739,24	212.092.809,83	57,63%	55,59%	0,91%	10,43%	1,07%	12,08%
1-abr-05	379.191.153,84	208.830.438,63	57,14%	55,07%	0,91%	10,43%	0,93%	10,57%
1-may-05	376.827.915,33	204.798.164,12	56,65%	54,35%	0,92%	10,49%	1,32%	14,70%

1-jun-05	374.455.991,93	201.133.907,28	56,16%	53,71%	0,92%	10,53%	1,17%	13,14%
1-jul-05	372.093.732,46	197.589.105,85	55,68%	53,10%	0,93%	10,57%	1,14%	12,84%
1-ago-05	369.722.791,69	193.677.095,93	55,20%	52,38%	0,93%	10,64%	1,35%	15,06%
1-sep-05	367.343.137,71	191.093.293,07	54,73%	52,02%	0,93%	10,60%	0,69%	8,03%
1-oct-05	364.954.738,50	187.996.446,55	54,26%	51,51%	0,93%	10,61%	0,98%	11,11%
1-nov-05	362.557.561,93	184.767.267,04	53,79%	50,96%	0,93%	10,63%	1,07%	12,09%
1-dic-05	360.151.575,73	181.390.187,59	53,33%	50,36%	0,94%	10,66%	1,17%	13,19%
1-ene-06	357.751.193,80	177.176.099,57	52,87%	49,52%	0,95%	10,77%	1,67%	18,28%
1-feb-06	355.341.990,46	173.903.688,54	52,42%	48,94%	0,95%	10,80%	1,18%	13,29%
1-mar-06	352.923.933,29	171.417.165,63	51,97%	48,57%	0,95%	10,78%	0,75%	8,69%
1-abr-06	350.496.989,77	167.951.708,05	51,53%	47,92%	0,95%	10,83%	1,34%	14,98%
1-may-06	348.061.127,23	165.525.172,35	51,08%	47,56%	0,95%	10,81%	0,76%	8,69%
1-jun-06	345.616.312,90	162.509.511,36	50,65%	47,02%	0,95%	10,83%	1,13%	12,72%
1-jul-06	343.179.028,95	159.533.616,19	50,21%	46,49%	0,95%	10,85%	1,13%	12,79%
1-ago-06	340.732.787,99	156.525.294,14	49,78%	45,94%	0,96%	10,88%	1,18%	13,29%
1-sep-06	338.277.557,10	154.279.251,43	49,35%	45,61%	0,95%	10,85%	0,72%	8,30%
1-oct-06	335.813.303,23	151.986.278,91	48,93%	45,26%	0,95%	10,83%	0,76%	8,79%
1-nov-06	333.339.993,23	149.303.851,68	48,51%	44,79%	0,95%	10,84%	1,04%	11,75%
1-dic-06	330.857.593,81	146.894.399,40	48,10%	44,40%	0,95%	10,83%	0,88%	10,02%
1-ene-07	328.387.628,03	143.739.100,77	47,68%	43,77%	0,96%	10,89%	1,41%	15,69%
1-feb-07	325.908.585,13	140.867.268,86	47,27%	43,22%	0,96%	10,93%	1,25%	14,04%
1-mar-07	323.420.431,74	138.490.249,58	46,87%	42,82%	0,96%	10,92%	0,93%	10,62%
1-abr-07	320.923.134,39	135.937.009,41	46,47%	42,36%	0,96%	10,94%	1,08%	12,22%
1-may-07	318.416.659,47	133.824.933,78	46,07%	42,03%	0,96%	10,91%	0,78%	8,96%
1-jun-07	315.900.973,26	131.563.917,41	45,67%	41,65%	0,96%	10,91%	0,91%	10,35%
1-jul-07	313.408.026,40	129.020.924,28	45,28%	41,17%	0,96%	10,93%	1,15%	12,99%
1-ago-07	310.905.917,96	127.043.989,79	44,89%	40,86%	0,96%	10,91%	0,74%	8,53%
1-sep-07	308.394.614,27	124.980.168,55	44,51%	40,53%	0,96%	10,89%	0,82%	9,45%
1-oct-07	305.874.081,54	123.394.529,83	44,13%	40,34%	0,95%	10,83%	0,46%	5,33%
1-nov-07	303.344.285,86	122.219.000,58	43,75%	40,29%	0,94%	10,74%	0,13%	1,51%
1-dic-07	300.805.193,17	120.456.300,85	43,37%	40,04%	0,94%	10,70%	0,61%	7,08%
1-ene-08	298.275.868,03	117.187.856,81	43,00%	39,29%	0,95%	10,81%	1,89%	20,45%
1-feb-08	295.737.247,61	114.066.188,27	42,63%	38,57%	0,96%	10,91%	1,83%	19,86%
1-mar-08	293.189.297,77	111.208.896,78	42,27%	37,93%	0,96%	10,98%	1,66%	18,17%
1-abr-08	290.631.984,21	109.373.710,80	41,91%	37,63%	0,96%	10,96%	0,78%	9,02%
1-may-08	288.065.272,52	107.907.510,17	41,55%	37,46%	0,96%	10,91%	0,46%	5,40%
1-jun-08	285.489.128,17	105.594.813,43	41,19%	36,99%	0,96%	10,94%	1,26%	14,12%
1-jul-08	282.934.496,93	103.820.495,10	40,84%	36,69%	0,96%	10,92%	0,79%	9,11%
1-ago-08	280.370.477,43	101.897.104,06	40,49%	36,34%	0,96%	10,92%	0,96%	10,88%
1-sep-08	277.797.035,16	100.139.188,58	40,14%	36,05%	0,96%	10,91%	0,81%	9,35%
1-oct-08	275.214.135,49	98.525.922,11	39,80%	35,80%	0,96%	10,88%	0,69%	7,95%
1-nov-08	272.621.743,66	96.740.036,07	39,45%	35,49%	0,95%	10,87%	0,88%	10,05%
1-dic-08	270.019.824,79	95.888.252,88	39,12%	35,51%	0,95%	10,77%	-0,07%	-0,90%
1-ene-09	267.585.826,77	93.784.557,90	38,78%	35,05%	0,95%	10,81%	1,30%	14,58%
1-feb-09	265.142.883,81	91.849.900,86	38,45%	34,64%	0,95%	10,83%	1,16%	13,07%
1-mar-09	262.690.963,03	90.630.074,41	38,12%	34,50%	0,95%	10,78%	0,41%	4,78%
1-abr-09	260.230.031,45	89.228.273,26	37,79%	34,29%	0,94%	10,74%	0,62%	7,14%
1-may-09	257.760.055,94	88.186.354,85	37,47%	34,21%	0,94%	10,68%	0,22%	2,62%
1-jun-09	255.281.003,27	86.644.901,56	37,15%	33,94%	0,94%	10,66%	0,79%	9,12%
1-jul-09	253.029.239,65	85.317.064,28	36,83%	33,72%	0,93%	10,64%	0,66%	7,60%
1-ago-09	250.769.200,79	84.154.066,25	36,51%	33,56%	0,93%	10,59%	0,47%	5,54%
1-sep-09	248.500.856,30	83.107.088,92	36,20%	33,44%	0,92%	10,54%	0,34%	4,04%
1-oct-09	246.224.175,64	81.930.782,92	35,89%	33,27%	0,92%	10,50%	0,50%	5,88%
1-nov-09	243.939.128,17	79.853.238,19	35,58%	32,73%	0,93%	10,57%	1,62%	17,83%
1-dic-09	241.645.683,16	78.698.595,89	35,28%	32,57%	0,92%	10,53%	0,51%	5,96%
1-ene-10	239.363.953,10	76.830.305,46	34,97%	32,10%	0,93%	10,58%	1,44%	16,01%
1-feb-10	237.073.837,68	75.735.526,74	34,67%	31,95%	0,92%	10,54%	0,47%	5,53%
1-mar-10	234.775.306,09	74.416.661,63	34,38%	31,70%	0,92%	10,52%	0,78%	8,96%
1-abr-10	232.468.327,39	73.189.351,16	34,08%	31,48%	0,92%	10,50%	0,67%	7,79%
1-may-10	230.152.870,55	71.934.384,87	33,79%	31,26%	0,92%	10,48%	0,73%	8,37%
1-jun-10	227.828.904,40	70.742.748,65	33,50%	31,05%	0,92%	10,46%	0,65%	7,57%
1-jul-10	225.512.622,46	69.655.390,23	33,21%	30,89%	0,91%	10,43%	0,53%	6,13%
1-ago-10	223.187.828,18	68.694.018,82	32,93%	30,78%	0,91%	10,38%	0,35%	4,15%
1-sep-10	220.854.490,28	67.726.103,99	32,64%	30,67%	0,91%	10,34%	0,37%	4,32%
1-oct-10	218.512.577,37	66.809.516,89	32,36%	30,57%	0,90%	10,29%	0,30%	3,50%
1-nov-10	216.162.057,92	65.765.538,54	32,09%	30,42%	0,90%	10,25%	0,49%	5,75%
1-dic-10	213.802.900,32	64.705.525,37	31,81%	30,26%	0,89%	10,22%	0,53%	6,13%
1-ene-11	211.551.609,68	63.462.204,24	31,54%	30,00%	0,89%	10,22%	0,88%	10,04%
1-feb-11	209.292.045,55	62.377.705,32	31,27%	29,80%	0,89%	10,20%	0,65%	7,50%
1-mar-11	207.024.177,52	61.446.526,85	31,00%	29,68%	0,89%	10,16%	0,41%	4,85%
1-abr-11	204.747.975,08	60.489.437,58	30,74%	29,54%	0,89%	10,13%	0,46%	5,42%
1-may-11	202.463.407,59	59.591.641,56	30,47%	29,43%	0,88%	10,09%	0,37%	4,38%
1-jun-11	200.170.444,32	58.726.943,53	30,21%	29,34%	0,88%	10,05%	0,32%	3,80%
1-jul-11	198.072.646,96	57.924.866,52	29,95%	29,24%	0,87%	10,00%	0,32%	3,79%
1-ago-11	195.967.140,20	56.986.633,44	29,69%	29,08%	0,87%	9,98%	0,56%	6,55%
1-sep-11	193.853.895,69	56.216.083,82	29,44%	29,00%	0,87%	9,93%	0,28%	3,27%
1-oct-11	191.732.885,02	55.432.481,39	29,19%	28,91%	0,86%	9,89%	0,30%	3,58%
1-nov-11	189.604.079,63	54.676.291,42	28,94%	28,84%	0,86%	9,84%	0,26%	3,04%
1-dic-11	187.467.450,88	53.548.400,42	28,69%	28,56%	0,86%	9,85%	0,95%	10,79%
1-ene-12	185.344.804,15	52.525.545,00	28,44%	28,34%	0,86%	9,84%	0,79%	9,04%
1-feb-12	183.214.356,70	51.664.934,85	28,20%	28,20%	0,86%	9,82%	0,49%	5,78%

519.200.000,00

10,00%

1,00%

feb-12

VIDA RESIDUAL DESDE

0,25

0,25

FECHA	Principal disponible para la amortización	SERIE A	SERIE B	SERIE A		SERIE B	
				PRINCIPAL	VIDA MEDIA	PRINCIPAL	VIDA MEDIA
		505.200.000,00	14.000.000,00				
18-dic-99	0,00	505.200.000,00	14.000.000,00	0,00	0,00	0,00	0,00
18-ene-00	1	0,00	505.200.000,00	14.000.000,00	0,00	0,00	0,00
18-feb-00	1	14.078.724,31	505.200.000,00	14.000.000,00	14.078.724,31	-61.707.048.665,39	0,00
18-mar-00	1	0,00	491.121.275,69	14.000.000,00	0,00	0,00	0,00
18-abr-00	1	0,00	491.121.275,69	14.000.000,00	0,00	0,00	0,00
18-may-00	1	13.499.157,64	491.121.275,69	14.000.000,00	13.499.157,64	-57.951.883.746,22	0,00
18-jun-00	1	0,00	477.622.118,05	14.000.000,00	0,00	0,00	0,00
18-jul-00	1	0,00	477.622.118,05	14.000.000,00	0,00	0,00	0,00
18-ago-00	1	19.581.679,04	477.622.118,05	14.000.000,00	19.581.679,04	-82.262.633.628,12	0,00
18-sep-00	1	0,00	458.040.439,01	14.000.000,00	0,00	0,00	0,00
18-oct-00	1	0,00	458.040.439,01	14.000.000,00	0,00	0,00	0,00
18-nov-00	1	8.154.091,39	458.040.439,01	14.000.000,00	8.154.091,39	-33.505.161.521,10	0,00
18-dic-00	1	0,00	449.886.347,62	14.000.000,00	0,00	0,00	0,00
18-ene-01	1	0,00	449.886.347,62	14.000.000,00	0,00	0,00	0,00
18-feb-01	1	15.770.484,90	449.886.347,62	14.000.000,00	15.770.484,90	-63.350.037.829,50	0,00
18-mar-01	1	0,00	434.115.862,73	14.000.000,00	0,00	0,00	0,00
18-abr-01	1	0,00	434.115.862,73	14.000.000,00	0,00	0,00	0,00
18-may-01	1	12.861.917,70	434.115.862,73	14.000.000,00	12.861.917,70	-50.521.612.715,40	0,00
18-jun-01	1	0,00	421.253.945,03	14.000.000,00	0,00	0,00	0,00
18-jul-01	1	0,00	421.253.945,03	14.000.000,00	0,00	0,00	0,00
18-ago-01	1	14.263.438,65	421.253.945,03	14.000.000,00	14.263.438,65	-54.714.550.653,06	0,00
18-sep-01	1	0,00	406.990.506,38	14.000.000,00	0,00	0,00	0,00
18-oct-01	1	0,00	406.990.506,38	14.000.000,00	0,00	0,00	0,00
18-nov-01	1	13.349.519,14	406.990.506,38	14.000.000,00	13.349.519,14	-49.980.599.660,16	0,00
18-dic-01	1	0,00	393.640.987,24	14.000.000,00	0,00	0,00	0,00
18-ene-02	1	0,00	393.640.987,24	14.000.000,00	0,00	0,00	0,00
18-feb-02	1	19.188.719,34	393.640.987,24	14.000.000,00	19.188.719,34	-70.077.203.029,68	0,00
18-mar-02	1	0,00	374.452.267,90	14.000.000,00	0,00	0,00	0,00
18-abr-02	1	0,00	374.452.267,90	14.000.000,00	0,00	0,00	0,00
18-may-02	1	15.548.382,20	374.452.267,90	14.000.000,00	15.548.382,20	-55.398.885.778,60	0,00
18-jun-02	1	0,00	358.903.885,70	14.000.000,00	0,00	0,00	0,00
18-jul-02	1	0,00	358.903.885,70	14.000.000,00	0,00	0,00	0,00
18-ago-02	1	14.474.335,83	358.903.885,70	14.000.000,00	14.474.335,83	-50.240.419.665,93	0,00
18-sep-02	1	0,00	344.429.549,87	14.000.000,00	0,00	0,00	0,00
18-oct-02	1	0,00	344.429.549,87	14.000.000,00	0,00	0,00	0,00
18-nov-02	1	14.108.556,16	344.429.549,87	14.000.000,00	14.108.556,16	-47.672.811.264,64	0,00
18-dic-02	1	0,00	330.320.993,71	14.000.000,00	0,00	0,00	0,00
18-ene-03	1	0,00	330.320.993,71	14.000.000,00	0,00	0,00	0,00
18-feb-03	1	14.526.320,25	330.320.993,71	14.000.000,00	14.526.320,25	-47.748.014.661,75	0,00
18-mar-03	1	0,00	315.794.673,46	14.000.000,00	0,00	0,00	0,00
18-abr-03	1	0,00	315.794.673,46	14.000.000,00	0,00	0,00	0,00
18-may-03	1	12.225.501,54	315.794.673,46	14.000.000,00	12.225.501,54	-39.097.153.924,92	0,00
18-jun-03	1	0,00	303.569.171,92	14.000.000,00	0,00	0,00	0,00
18-jul-03	1	0,00	303.569.171,92	14.000.000,00	0,00	0,00	0,00
18-ago-03	1	13.248.270,26	303.569.171,92	14.000.000,00	13.248.270,26	-41.149.127.427,56	0,00
18-sep-03	1	0,00	290.320.901,66	14.000.000,00	0,00	0,00	0,00
18-oct-03	1	0,00	290.320.901,66	14.000.000,00	0,00	0,00	0,00
18-nov-03	1	13.633.904,20	290.320.901,66	14.000.000,00	13.633.904,20	-41.092.587.258,80	0,00
18-dic-03	1	0,00	276.686.997,46	14.000.000,00	0,00	0,00	0,00
18-ene-04	1	0,00	276.686.997,46	14.000.000,00	0,00	0,00	0,00
18-feb-04	1	14.700.500,97	276.686.997,46	14.000.000,00	14.700.500,97	-42.954.863.834,34	0,00
18-mar-04	1	0,00	261.986.496,49	14.000.000,00	0,00	0,00	0,00
18-abr-04	1	0,00	261.986.496,49	14.000.000,00	0,00	0,00	0,00
18-may-04	1	13.044.517,06	261.986.496,49	14.000.000,00	13.044.517,06	-36.942.072.313,92	0,00
18-jun-04	1	0,00	248.941.979,43	14.000.000,00	0,00	0,00	0,00
18-jul-04	1	0,00	248.941.979,43	14.000.000,00	0,00	0,00	0,00
18-ago-04	1	11.912.166,33	248.941.979,43	14.000.000,00	11.912.166,33	-32.639.335.744,20	0,00
18-sep-04	1	0,00	237.029.813,10	14.000.000,00	0,00	0,00	0,00
18-oct-04	1	0,00	237.029.813,10	14.000.000,00	0,00	0,00	0,00
18-nov-04	1	22.494.827,92	237.029.813,10	14.000.000,00	22.494.827,92	-59.566.304.332,16	0,00
18-dic-04	1	0,00	214.534.985,18	14.000.000,00	0,00	0,00	0,00
18-ene-05	1	0,00	214.534.985,18	14.000.000,00	0,00	0,00	0,00
18-feb-05	1	12.835.425,97	214.534.985,18	14.000.000,00	12.835.425,97	-32.807.348.779,32	0,00
18-mar-05	1	0,00	201.699.559,21	14.000.000,00	0,00	0,00	0,00
18-abr-05	1	0,00	201.699.559,21	14.000.000,00	0,00	0,00	0,00
18-may-05	1	10.901.495,09	201.699.559,21	14.000.000,00	10.901.495,09	-26.893.988.387,03	0,00
18-jun-05	1	0,00	190.798.064,12	14.000.000,00	0,00	0,00	0,00
18-jul-05	1	0,00	190.798.064,12	14.000.000,00	0,00	0,00	0,00
18-ago-05	1	11.121.068,19	190.798.064,12	14.000.000,00	11.121.068,19	-26.412.536.951,25	0,00
18-sep-05	1	0,00	179.676.995,93	14.000.000,00	0,00	0,00	0,00
18-oct-05	1	0,00	179.676.995,93	14.000.000,00	0,00	0,00	0,00

519.200.000,000

10,00%

1,00%

feb-12

VIDA RESIDUAL DESDE

0,25

0,25

		SERIE A			SERIE B			
		PRINCIPAL	VIDA	PRINCIPAL	VIDA	PRINCIPAL	VIDA	
18-nov-05	1	8.909.828,89	179.676.995,93	14.000.000,00	8.909.828,89	-20.341.139.355,87	0,00	0,00
18-dic-05	1	0,00	170.767.167,04	14.000.000,00	0,00	0,00	0,00	0,00
18-ene-06	1	0,00	170.767.167,04	14.000.000,00	0,00	0,00	0,00	0,00
18-feb-06	1	10.863.578,50	170.767.167,04	14.000.000,00	10.863.578,50	-23.802.100.493,50	0,00	0,00
18-mar-06	1	0,00	159.903.588,54	14.000.000,00	0,00	0,00	0,00	0,00
18-abr-06	1	0,00	159.903.588,54	14.000.000,00	0,00	0,00	0,00	0,00
18-may-06	1	8.378.516,19	159.903.588,54	14.000.000,00	8.378.516,19	-17.611.641.031,38	0,00	0,00
18-jun-06	1	0,00	151.525.072,35	14.000.000,00	0,00	0,00	0,00	0,00
18-jul-06	1	0,00	151.525.072,35	14.000.000,00	0,00	0,00	0,00	0,00
18-ago-06	1	8.999.878,21	151.525.072,35	14.000.000,00	8.999.878,21	-18.089.755.202,10	0,00	0,00
18-sep-06	1	0,00	142.525.194,14	14.000.000,00	0,00	0,00	0,00	0,00
18-oct-06	1	0,00	142.525.194,14	14.000.000,00	0,00	0,00	0,00	0,00
18-nov-06	1	7.221.442,46	142.525.194,14	14.000.000,00	6.794.510,79	-13.031.871.703,94	426.931,67	-818.854.934,34
18-dic-06	1	0,00	135.730.683,35	13.573.068,33	0,00	0,00	0,00	0,00
18-ene-07	1	0,00	135.730.683,35	13.573.068,33	0,00	0,00	0,00	0,00
18-feb-07	1	8.436.582,82	135.730.683,35	13.573.068,33	7.669.620,75	-14.004.727.481,20	766.962,07	-1.400.472.748,12
18-mar-07	1	0,00	128.061.062,60	12.806.106,26	0,00	0,00	0,00	0,00
18-abr-07	1	0,00	128.061.062,60	12.806.106,26	0,00	0,00	0,00	0,00
18-may-07	1	7.042.335,08	128.061.062,60	12.806.106,26	6.402.122,80	-11.120.487.303,60	640.212,28	-1.112.048.730,36
18-jun-07	1	0,00	121.658.939,80	12.165.893,98	0,00	0,00	0,00	0,00
18-jul-07	1	0,00	121.658.939,80	12.165.893,98	0,00	0,00	0,00	0,00
18-ago-07	1	6.780.943,99	121.658.939,80	12.165.893,98	6.164.494,54	-10.140.593.512,32	616.449,45	-1.014.059.351,23
18-sep-07	1	0,00	115.494.445,26	11.549.444,53	0,00	0,00	0,00	0,00
18-oct-07	1	0,00	115.494.445,26	11.549.444,53	0,00	0,00	0,00	0,00
18-nov-07	1	4.824.989,21	115.494.445,26	11.549.444,53	4.386.353,83	-6.812.007.493,75	438.635,38	-681.200.749,38
18-dic-07	1	0,00	111.108.091,44	11.110.809,14	0,00	0,00	0,00	0,00
18-ene-08	1	0,00	111.108.091,44	11.110.809,14	0,00	0,00	0,00	0,00
18-feb-08	1	8.152.812,31	111.108.091,44	11.110.809,14	7.411.647,55	-10.828.417.077,19	741.164,76	-1.082.841.707,72
18-mar-08	1	0,00	103.696.443,88	10.369.644,39	0,00	0,00	0,00	0,00
18-abr-08	1	0,00	103.696.443,88	10.369.644,39	0,00	0,00	0,00	0,00
18-may-08	1	6.158.678,10	103.696.443,88	10.369.644,39	5.598.798,27	-7.675.952.431,91	559.879,83	-767.595.243,19
18-jun-08	1	0,00	98.097.645,61	9.809.764,56	0,00	0,00	0,00	0,00
18-jul-08	1	0,00	98.097.645,61	9.809.764,56	0,00	0,00	0,00	0,00
18-ago-08	1	6.010.406,11	98.097.645,61	9.809.764,56	5.464.005,55	-6.988.463.104,26	546.400,56	-698.846.310,43
18-sep-08	1	0,00	92.633.640,05	9.263.364,01	0,00	0,00	0,00	0,00
18-oct-08	1	0,00	92.633.640,05	9.263.364,01	0,00	0,00	0,00	0,00
18-nov-08	1	5.157.067,99	92.633.640,05	9.263.364,01	4.688.243,63	-5.564.945.185,57	468.824,36	-556.494.518,56
18-dic-08	1	0,00	87.945.396,43	8.794.539,64	0,00	0,00	0,00	0,00
18-ene-09	1	0,00	87.945.396,43	8.794.539,64	0,00	0,00	0,00	0,00
18-feb-09	1	4.890.135,21	87.945.396,43	8.794.539,64	4.445.577,46	-4.867.907.322,68	444.557,75	-486.790.732,27
18-mar-09	1	0,00	83.499.818,96	8.349.981,90	0,00	0,00	0,00	0,00
18-abr-09	1	0,00	83.499.818,96	8.349.981,90	0,00	0,00	0,00	0,00
18-may-09	1	3.663.546,01	83.499.818,96	8.349.981,90	3.330.496,37	-3.350.479.350,96	333.049,64	-335.047.935,10
18-jun-09	1	0,00	80.169.322,59	8.016.932,26	0,00	0,00	0,00	0,00
18-jul-09	1	0,00	80.169.322,59	8.016.932,26	0,00	0,00	0,00	0,00
18-ago-09	1	4.032.288,60	80.169.322,59	8.016.932,26	3.665.716,91	-3.350.465.254,91	366.571,69	-335.046.525,49
18-sep-09	1	0,00	76.503.605,68	7.650.360,57	0,00	0,00	0,00	0,00
18-oct-09	1	0,00	76.503.605,68	7.650.360,57	0,00	0,00	0,00	0,00
18-nov-09	1	4.300.828,06	76.503.605,68	7.650.360,57	3.909.843,69	-3.213.891.513,93	390.984,37	-321.389.151,39
18-dic-09	1	0,00	72.593.761,99	7.259.376,20	0,00	0,00	0,00	0,00
18-ene-10	1	0,00	72.593.761,99	7.259.376,20	0,00	0,00	0,00	0,00
18-feb-10	1	4.117.711,45	72.593.761,99	7.259.376,20	3.743.374,05	-2.732.663.053,18	374.337,40	-273.266.305,32
18-mar-10	1	0,00	68.850.387,95	6.885.038,79	0,00	0,00	0,00	0,00
18-abr-10	1	0,00	68.850.387,95	6.885.038,79	0,00	0,00	0,00	0,00
18-may-10	1	3.801.141,87	68.850.387,95	6.885.038,79	3.455.583,52	-2.215.029.035,15	345.558,35	-221.502.903,52
18-jun-10	1	0,00	65.394.804,43	6.539.480,44	0,00	0,00	0,00	0,00
18-jul-10	1	0,00	65.394.804,43	6.539.480,44	0,00	0,00	0,00	0,00
18-ago-10	1	3.240.366,05	65.394.804,43	6.539.480,44	2.945.787,32	-1.617.237.237,68	294.578,73	-161.723.723,77
18-sep-10	1	0,00	62.449.017,11	6.244.901,71	0,00	0,00	0,00	0,00
18-oct-10	1	0,00	62.449.017,11	6.244.901,71	0,00	0,00	0,00	0,00
18-nov-10	1	2.928.480,28	62.449.017,11	6.244.901,71	2.662.254,80	-1.216.650.443,60	266.225,48	-121.665.044,36
18-dic-10	1	0,00	59.786.762,31	5.978.676,23	0,00	0,00	0,00	0,00
18-ene-11	1	0,00	59.786.762,31	5.978.676,23	0,00	0,00	0,00	0,00
18-feb-11	1	321.849,98	59.786.762,31	5.978.676,23	292.590,89	-106.795.674,01	29.259,09	-10.679.567,40
18-mar-11	1	0,00	59.494.171,42	5.949.417,14	0,00	0,00	0,00	0,00
18-abr-11	1	0,00	59.494.171,42	5.949.417,14	0,00	0,00	0,00	0,00
18-may-11	1	3.749.831,49	59.494.171,42	5.949.417,14	3.408.937,72	-940.866.810,89	340.893,77	-94.086.681,09
18-jun-11	1	0,00	56.085.233,70	5.608.523,37	0,00	0,00	0,00	0,00
18-jul-11	1	0,00	56.085.233,70	5.608.523,37	0,00	0,00	0,00	0,00
18-ago-11	1	3.502.435,04	56.085.233,70	5.608.523,37	3.085.911,67	-567.807.748,11	416.523,37	-76.640.300,09
18-sep-11	1	0,00	52.999.322,03	5.192.000,00	0,00	0,00	0,00	0,00
18-oct-11	1	0,00	52.999.322,03	5.192.000,00	0,00	0,00	0,00	0,00
18-nov-11	1	3.325.367,94	52.999.322,03	5.192.000,00	3.325.367,94	-305.933.850,21	0,00	0,00
18-dic-11	1	0,00	49.673.954,09	5.192.000,00	0,00	0,00	0,00	0,00
18-ene-12	1	0,00	49.673.954,09	5.192.000,00	0,00	0,00	0,00	0,00
18-feb-12	1	3.201.119,24	49.673.954,09	5.192.000,00	3.201.119,24	0,00	0,00	0,00
18-mar-12	1	0,00	46.472.834,85	5.192.000,00	0,00	0,00	0,00	0,00
18-abr-12	1	0,00	46.472.834,85	5.192.000,00	0,00	0,00	0,00	0,00
18-may-12	1	51.664.934,85	46.472.834,85	5.192.000,00	46.472.834,85	4.182.555.136,50	#####	467.280.000,00