



F.T.A. UCI 6

MARIA JOSE HERENCIAS PALOMINO
ANALYST
SANTANDER DE TITULIZACION, S.G.F.T, S.A.
CIUDAD GRUPO SANTANDER
28660 BOADILLA DEL MONTE
marjherencias@gruposantander.com
Tel: 912893300



NAME OF THE FUND:

F.T.A. UCI 6

INFORMATION AT:

QUARTER/SEMESTER:

February 17, 2014 - May 16, 2014

YEAR:

2014

Acting on behalf of Santander de Titulización S.G.F.T., S.A. as General Manager:

Signature:

IGNACIO ORTEGA GAVARA - GENERAL MANAGER

I. DATA OF THE FUND

Constitution Date	June 19, 2000	Paying Agent	BANCO SANTANDER	
Disbursement Date	June 22, 2000	Negotiation Market	AIAF	
Final Date of Redemption	November 16, 2030	Ratings Agencies	MOODY'S ESPAÑA	
Management Company	SANTANDER DE TITULIZACION, S.G.F.T, S.A.	Rating	Initial	Current
Credit Rights's Seller	UNION DE CREDITOS INMOBILIARIOS	CLASS A	Aaa	A1
		CLASS B	A2	Baa3

II. SECURITIES ISSUED CHARGED TO THE FUND: SECURITISATION BONDS

CLASS PRIORITY ISIN CODE	NUM BONDS	NOMINAL			
			Initial	Current	%Act/In
CLASS A ES0338558002	4.364	Nominal per Bond	100.000,00	8.660,52	
		Total Nominal	436.400.000,00	37.794.509,28	8,66 %
CLASS B ES0338558010	206	Nominal per Bond	100.000,00	22.184,43	
		Total Nominal	20.600.000,00	4.569.992,58	22,18 %

REDEMPTION AND INTEREST OF THE BONDS					
Current			Next		
Payment Date of the Current Period May 16, 2014			Next Payment Date August 18, 2014		
	Redemption of the Bonds	Gross Interest	Interest Rate	Gross Interest Next Coupon	Net Interest Next Coupon
CLASS A	270,01 €	12,73 €	0,6317 %	14,09 €	11,13 €
CLASS B	0,00 €	57,65 €	1,1183 %	63,89 €	50,47 €
Accrued amortisation due not payed	0,00 €				
Scheduled Amortisation	NO				

III. ASSET PURCHASED BY THE FUND: CREDIT RIGHTS

CREDIT RIGHTS	ISSUE DATE	CURRENT DATE
Number of CR's	13.139	2.400
CR's Outstanding to be amortised	457.000.004,15	42.364.514,85
CR's Outstanding per Loan to be amortised	34.781,95	17.651,88
Interest Rate	5,00 %	1,84 %

PREPAYMENT RATE	CURRENT SITUATION
Monthly Single Rate	3,21%
Average Monthly Single Rate	3,90 %
Constant Prepayment Rate from Constitution	11,73 %

CURRENT DELINQUENCY	Up to 1 month	From 1 to 6 months	Greater than 6 months
Debt Due (Principal + Interest)	12.319,38	12.907,88	87.233,56
Debt to be amortised	0,00	0,00	42.275.578,94
Total Debt	12.319,38	12.907,88	42.362.812,50

F.T.A. UCI 6

QUARTERLY BONDS PAYOUT REPORT

2014/05/16

BONDS. PRINCIPAL	
Previous Balance	43.542.825,52 €
Principal Amortised	1.178.323,64 €
Outstanding Balance	42.364.501,88 €
% of Initial Balance	9,27%
Principal accrued and unpaid	0

DATA	
Determination Date	2014/05/08
Payment Date	2014/05/16
Last Payment Date	2014/02/17
Number of Days (Act/360)	88
Reference Interest Rate (%)	0,328%
Next Payment Date	2014/08/18

INTEREST PAID	
CLASS A	55.553,72 €
CLASS B	11.875,90 €
Interest accrued and unpaid	0,00 €

RESIDUAL LIFE (YEARS)		
	INITIAL	2014/05/16
CLASS A	6,2	0,25
CLASS B	9,8	0,25

F.T.A. UCI 6

QUARTERLY COLLATERAL REPORT

2014/05/16

PRINCIPAL

Previous Balance	43.542.838,75 €
Principal Amortised	1.178.323,90 €
Outstanding Balance	42.364.514,85 €
Number of Credit Rights	2.400
LTV	18,60%

INTEREST

Interest received during relevant period	194.003,06 €
Interest accrued during relevant period	149.627,47 €

PRINCIPAL BALANCE IN ARREARS

	UP to 30 DAYS	30 to 60 DAYS	60 to 90 DAYS	90 to 180 DAYS	> 180 DAYS
Principal Balance in Arrears	10.008,13 €	6.030,81 €	912,69 €	3.706,80 €	68.277,48 €
Interest accrued on Credit Rights in Arrears	2.311,25 €	1.125,62 €	217,61 €	914,35 €	18.956,08 €
Outstanding Balance	1.766.238,88 €	567.246,94 €	59.291,57 €	145.332,05 €	546.306,69 €
Number of Credit Rights	92	20	2	6	36
% of Outstanding Balance	4,17%	1,34%	0,14%	0,34%	1,29%

TRANSITORY PROPERTIES

Last balance	0,00 €
Difference in Actual Period	0,00 €
Current balance	0,00 €
Transitory properties CR's number	0

F.T.A. UCI 6

QUARTERLY REPORT - ALLOCATION OF CASH

2014/05/16

TOTAL CASH RECEIVED END OF PERIOD	1.374.401,58 €
CASH RECEIVED - PRINCIPAL	
Amortisation of Credit Rights	1.178.323,90 €
CASH RECEIVED - INTEREST	
Interest received from Credit Rights	194.003,06 €
Interest received under GIC	48,38 €
INCOMES OF JUDICIAL	0,00 €
OTHERS	2.026,24 €

TOTAL CASH PAID END OF PERIOD	1.374.401,58 €
ORDINARY EXPENSES	1.401,84 €
MANAGEMENT FEE	10.402,50 €
INTEREST PAID TO CLASS A	55.553,72 €
INTEREST PAID TO CLASS B	11.875,90 €
REDEMPTION PAID CLASS A	1.178.323,64 €
REDEMPTION PAID CLASS B	0,00 €
INTEREST SUBORDINATED LOAN SANTANDER	4.629,19 €
INTEREST SUBORDINATED LOAN UCB	4.629,19 €
ADMINISTRATION FEE	6.000,00 €
VARIABLE FEE	101.585,60 €

TREASURY ACCOUNT STATEMENT	4.570.000,04 €
PRINCIPAL RESERVE FUND	
Previous Balance	4.570.000,04 €
Period utilization	0,00 €
Outstanding Balance	4.570.000,04 €
WITHHOLDING TAXES	0,00 €
ISSUE EXPENSES WITHHELD	0,00 €
OTHERS	0,00 €

F.T.A. UCI 6**CREDIT ENHACEMENT AND SUBORDINATED LOAN****2014/05/16**

CREDIT ENHACEMENT				
CONCEPTS	INITIAL		2014/05/16	
SUBORDINATED ISSUE	95,49 %		10,79%	
PRINCIPAL RESERVE FUND	9.597.000,00 €	2,10%	4.570.000,04 €	10,79%

SUBORDINATED LOANS				
CONCEPTS	INITIAL		2014/05/16	
SUBORDINATED LOAN A SANTANDER				
Total Outstanding Subordinated Loan	5.410.010,46 €		2.285.788,65 €	
Interest Rate	2,650 %		0,84%	
SUBORDINATED LOAN A UCB				
Total Outstanding Subordinated Loan	5.410.010,46 €		2.285.788,65 €	
Interest Rate	2,650 %		0,84%	

F.T.A. UCI 6

DEFINITIONS

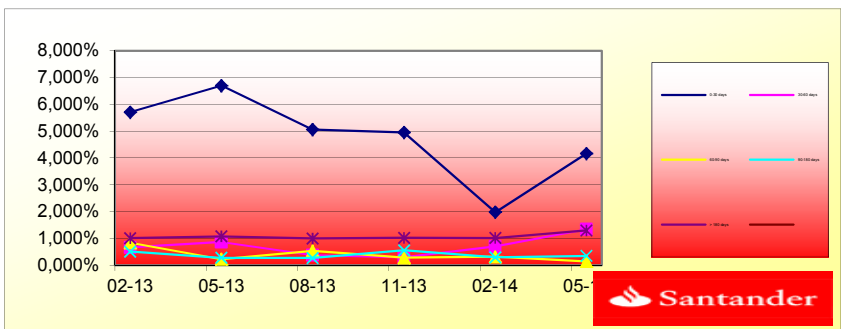
DETERMINATION DATE Means the date in which the Gestora will carry out the necessary calculations, on behalf of the Fund, for the distribution of the available funds at this date, according with the Order of Priority of Payments.
All the information regarding the Assets (Outstading Balance of the Credit Rights, arrears' tables, transitory properties, stratification tables, etc.) are refered to this mentioned date.

TRANSITORY PROPERTIES Those assets in the balance of the Fund as a consequence of a judicial or non-judicial process.

**FONDO DE TITULIZACIÓN HIPOTECARIA
UCI 6**

HISTORICAL ARREARS REPORT

Data	02-13	05-13	08-13	11-13	02-14	05-14
0-30 days	5,705%	6,698%	5,059%	4,951%	1,977%	4,169%
30-60 days	0,659%	0,862%	0,373%	0,288%	0,698%	1,339%
60-90 days	0,837%	0,225%	0,536%	0,279%	0,311%	0,140%
90-180 days	0,504%	0,273%	0,264%	0,549%	0,294%	0,343%
> 180 days	1,004%	1,072%	0,993%	1,021%	1,011%	1,290%



TRIGGERS

TRIGGERS BONDS

1. IF 1.a) IS HIGHER THAN 1.b) THERE IS NO REDEMPTION OF CLASS B:

1.a) CR'S IN ARREARS OVER 90 DAYS	691.638,74 €
1.b) 7% CR'S OUTSTANDING BALANCE	2.965.516,04 €

THE CLASS B BONDS ARE ON THE MINIMUM LEVEL PERMITTED

TRIGGERS RESERVE FUND

1. IF 1.a) IS HIGHER THAN 1.b) THERE IS NO REDEMPTION OF RESERVE FUND:

1.a) CR'S IN ARREARS OVER 90 DAYS	N/A
1.b) 3% CR'S OUTSTANDING BALANCE	N/A

2. IF 2.a) IS LOWER THAN 2.b) THERE IS NO REDEMPTION OF RESERVE FUND:

2.a) WEIGHTED AVERAGE RATE CR'S	N/A
2.b) WEIGHTED AVERAGE RATE BONDS A AND B + 0,40%	N/A

3. IF 3.a) IS HIGHER THAN 3.b) THERE IS NO REDEMPTION OF RESERVE FUND:

3.a) WRITTE OFF	N/A
3.b) 0,025% INITIAL OUTSTANDING BALANCE CR'S *N/A PAYMENT DATES	N/A

THE RESERVE FUND IS ON THE MINIMUM LEVEL PERMITTED

**FONDO DE TITULIZACIÓN HIPOTECARIA
UCI 6**

L.T.V.

LTV (%)	SALDO VIVO	%	NÚMERO	% PRESTAMOS
LTV (%)	OUTS. BALANC	% OUTSTANDING	LOANS	% LOANS
0,00-9,99	5.557.308,74	13,1179%	1.088	45,3333%
10,00 - 19,99	3.077.931,81	7,2654%	204	8,5000%
20,00 - 29,99	7.824.049,86	18,4685%	341	14,2083%
30,00 - 39,99	10.265.701,69	24,2320%	326	13,5833%
40,00 - 49,99	11.275.448,67	26,6154%	322	13,4167%
50,00 - 59,99	4.064.949,84	9,5952%	112	4,6667%
60,00 - 69,99	298.912,69	0,7056%	7	0,2917%

F.T.A.: UCI 6

Counterpart

Agreement	Counterpart	Rating Agency	Minimum rating	Current rating
Treasury account	Banco Santander S.A.	Moody's	S/T: P-1	P-2

COUNTERPARTY DOES NOT HAVE THE MINIMUM RATING REQUIRED. TREASURY ACCOUNT HAS BEEN TRANSFERRED TO A COUNTERPARTY WITH MINIMUM RATING REQUIRED.

UCI 6

Date	Real Outstanding	1,03%	Remaining at the end of the month	Average Single monthly mortality	CPR	Monthly Single monthly mortality	CPR	
		Prepayment vector						
							3,90%	
	457.000.004,2		100,00%	100,00%				
julio-00	456.040.916,0	453.128.783,7	98,97%	99,36%	0,64%	7,40%	0,64%	7,40%
agosto-00	455.077.826,1	448.828.507,4	97,94%	98,63%	0,69%	7,96%	0,74%	8,52%
septiembre-00	454.110.683,2	445.856.137,4	96,93%	98,18%	0,61%	7,08%	0,45%	5,28%
octubre-00	453.139.470,2	443.087.649,1	95,93%	97,78%	0,56%	6,51%	0,41%	4,79%
noviembre-00	452.164.170,0	439.171.130,0	94,94%	97,13%	0,58%	6,76%	0,67%	7,75%
diciembre-00	451.184.765,4	436.191.628,6	93,95%	96,68%	0,56%	6,54%	0,46%	5,41%
enero-01	450.201.239,2	431.891.179,4	92,98%	95,93%	0,59%	6,87%	0,77%	8,85%
febrero-01	449.213.573,9	428.312.545,1	92,02%	95,35%	0,59%	6,90%	0,61%	7,09%
marzo-01	448.221.752,3	423.886.429,0	91,07%	94,57%	0,62%	7,17%	0,81%	9,35%
abril-01	447.225.756,7	418.072.840,2	90,13%	93,48%	0,67%	7,77%	1,15%	12,98%
mayo-01	446.225.569,6	414.462.703,6	89,20%	92,88%	0,67%	7,74%	0,64%	7,43%
junio-01	445.221.173,5	410.239.612,2	88,27%	92,14%	0,68%	7,86%	0,80%	9,14%
julio-01	444.212.550,4	405.614.216,5	87,36%	91,31%	0,70%	8,05%	0,90%	10,31%
agosto-01	443.199.682,8	400.238.316,5	86,46%	90,31%	0,73%	8,37%	1,10%	12,43%
septiembre-01	442.182.552,7	395.859.610,6	85,56%	89,52%	0,74%	8,47%	0,87%	9,92%
octubre-01	441.161.142,1	391.241.620,9	84,68%	88,68%	0,75%	8,61%	0,94%	10,69%
noviembre-01	440.135.433,2	385.838.182,2	83,80%	87,66%	0,77%	8,88%	1,15%	12,97%
diciembre-01	439.105.407,7	380.748.736,1	82,94%	86,71%	0,79%	9,07%	1,09%	12,30%
enero-02	438.071.047,5	375.271.007,5	82,08%	85,66%	0,81%	9,31%	1,21%	13,55%
febrero-02	437.032.334,3	370.042.745,41	81,23%	84,67%	0,83%	9,50%	1,16%	13,05%
marzo-02	435.989.249,9	364.551.475,1	80,39%	83,61%	0,85%	9,72%	1,25%	13,99%
abril-02	434.941.775,9	359.297.389,6	79,56%	82,61%	0,86%	9,90%	1,20%	13,53%
mayo-02	433.889.893,8	353.940.719,2	78,74%	81,57%	0,88%	10,08%	1,25%	14,03%
junio-02	432.833.585,0	347.793.248,4	77,92%	80,35%	0,91%	10,36%	1,50%	16,56%
julio-02	431.774.155,1	342.309.563,3	77,12%	79,28%	0,92%	10,55%	1,34%	14,90%
agosto-02	430.710.266,9	336.877.719,2	76,32%	78,21%	0,94%	10,72%	1,34%	14,98%
septiembre-02	429.641.901,5	332.638.740,1	75,53%	77,42%	0,94%	10,75%	1,01%	11,50%
octubre-02	428.569.040,0	328.113.486,4	74,75%	76,56%	0,95%	10,82%	1,11%	12,57%
noviembre-02	427.491.663,6	324.171.387,7	73,98%	75,83%	0,95%	10,82%	0,95%	10,85%
diciembre-02	426.409.753,2	318.147.224,8	73,21%	74,61%	0,97%	11,06%	1,61%	17,69%
enero-03	425.324.271,8	313.840.105,4	72,45%	73,79%	0,98%	11,10%	1,10%	12,45%
febrero-03	424.234.222,3	308.434.679,1	71,71%	72,70%	0,99%	11,27%	1,47%	16,28%
marzo-03	423.139.585,5	302.052.495,6	70,96%	71,38%	1,02%	11,54%	1,82%	19,74%
abril-03	422.040.342,2	296.379.448,4	70,23%	70,23%	1,03%	11,73%	1,62%	17,82%
mayo-03	420.936.472,8	290.615.261,4	69,50%	69,04%	1,05%	11,93%	1,69%	18,47%
junio-03	419.827.958,0	284.645.570,9	68,79%	67,80%	1,07%	12,15%	1,80%	19,54%
julio-03	418.717.512,0	276.839.156,1	68,07%	66,12%	1,11%	12,56%	2,48%	26,06%

Date	Real Outstanding		1,03% Prepayment vector	Remaining at the end of the month	Average Single monthly mortality	CPR	Monthly Single monthly mortality	CPR
								3,90%
agosto-03	417.602.392,7	267.980.363,8	67,37%	64,17%	1,16%	13,07%	2,94%	30,11%
septiembre-03	416.482.580,7	261.911.338,7	66,67%	62,89%	1,18%	13,30%	2,00%	21,55%
octubre-03	415.358.056,2	254.035.675,0	65,98%	61,16%	1,22%	13,71%	2,74%	28,39%
noviembre-03	414.228.799,2	246.480.453,8	65,30%	59,50%	1,26%	14,10%	2,71%	28,08%
diciembre-03	413.094.790,0	239.591.881,9	64,63%	58,00%	1,29%	14,41%	2,53%	26,45%
enero-04	411.956.645,0	232.532.574,9	63,96%	56,45%	1,32%	14,75%	2,68%	27,80%
febrero-04	410.813.710,2	227.850.234,3	63,30%	55,46%	1,33%	14,85%	1,74%	19,00%
marzo-04	409.665.965,6	222.469.311,6	62,64%	54,31%	1,35%	15,03%	2,09%	22,37%
abril-04	408.513.391,0	217.788.596,9	61,99%	53,31%	1,36%	15,13%	1,83%	19,86%
mayo-04	407.355.965,9	211.304.679,0	61,35%	51,87%	1,39%	15,43%	2,70%	28,01%
junio-04	406.193.669,9	206.609.961,4	60,72%	50,86%	1,40%	15,55%	1,94%	20,97%
julio-04	405.030.380,6	201.387.274,7	60,09%	49,72%	1,42%	15,73%	2,25%	23,88%
agosto-04	403.862.195,8	196.432.862,3	59,47%	48,64%	1,43%	15,88%	2,18%	23,22%
septiembre-04	402.689.094,9	193.264.517,0	58,86%	47,99%	1,43%	15,86%	1,33%	14,80%

Date	Real Outstanding	1,03%	Remaining at the end of the month	Average Single monthly mortality	CPR	Monthly Single monthly mortality	CPR	
		Prepayment vector						
							3,90%	
octubre-04	401.511.057,2	189.723.138,8	58,25%	47,25%	1,43%	15,89%	1,54%	17,04%
noviembre-04	400.328.061,9	186.369.970,8	57,64%	46,55%	1,43%	15,90%	1,48%	16,35%
diciembre-04	399.140.088,2	182.504.224,3	57,05%	45,72%	1,44%	15,96%	1,78%	19,42%
enero-05	397.949.157,2	178.392.645,5	56,46%	44,83%	1,45%	16,06%	1,96%	21,15%
febrero-05	396.753.214,3	174.837.087,6	55,87%	44,07%	1,45%	16,10%	1,70%	18,57%
marzo-05	395.552.238,6	171.903.827,8	55,30%	43,46%	1,45%	16,09%	1,38%	15,35%
abril-05	394.346.208,7	168.239.247,0	54,73%	42,66%	1,46%	16,16%	1,83%	19,90%
mayo-05	393.135.103,5	164.202.790,5	54,16%	41,77%	1,47%	16,27%	2,10%	22,47%
junio-05	391.918.901,5	160.739.959,7	53,60%	41,01%	1,47%	16,33%	1,81%	19,63%
julio-05	390.701.860,8	156.628.073,3	53,04%	40,09%	1,49%	16,46%	2,25%	23,94%
agosto-05	389.479.698,4	152.963.373,2	52,50%	39,27%	1,50%	16,55%	2,03%	21,85%
septiembre-05	388.252.392,8	150.814.394,0	51,95%	38,84%	1,49%	16,48%	1,09%	12,36%
octubre-05	387.019.922,2	147.200.821,1	51,42%	38,03%	1,50%	16,58%	2,09%	22,34%
noviembre-05	385.782.265,0	144.039.594,3	50,88%	37,34%	1,50%	16,63%	1,83%	19,91%
diciembre-05	384.539.399,3	141.159.654,6	50,36%	36,71%	1,51%	16,66%	1,68%	18,42%
enero-06	383.297.061,2	138.445.593,2	49,84%	36,12%	1,51%	16,67%	1,60%	17,65%
febrero-06	382.049.494,9	135.044.659,8	49,32%	35,35%	1,52%	16,77%	2,14%	22,84%
marzo-06	380.796.678,4	132.300.064,1	48,81%	34,74%	1,52%	16,79%	1,71%	18,70%
abril-06	379.538.589,7	129.075.221,0	48,31%	34,01%	1,53%	16,88%	2,11%	22,62%
mayo-06	378.275.206,6	126.639.279,5	47,81%	33,48%	1,53%	16,89%	1,56%	17,19%
junio-06	377.006.506,7	124.003.623,7	47,31%	32,89%	1,53%	16,92%	1,75%	19,11%
julio-06	375.739.564,1	120.891.562,8	46,82%	32,17%	1,54%	17,01%	2,18%	23,25%
agosto-06	374.467.289,9	118.426.272,7	46,34%	31,63%	1,54%	17,03%	1,71%	18,66%
septiembre-06	373.189.661,5	116.764.763,8	45,86%	31,29%	1,54%	16,97%	1,07%	12,06%
octubre-06	371.906.656,4	114.821.542,6	45,39%	30,87%	1,53%	16,94%	1,32%	14,79%
noviembre-06	370.618.252,0	112.351.017,3	44,92%	30,31%	1,54%	16,97%	1,81%	19,70%
diciembre-06	369.324.425,6	109.914.875,8	44,45%	29,76%	1,54%	17,01%	1,83%	19,84%
enero-07	368.030.272,9	107.970.795,4	43,99%	29,34%	1,54%	17,00%	1,42%	15,80%
febrero-07	366.730.674,0	106.255.615,9	43,54%	28,97%	1,54%	16,96%	1,24%	13,90%
marzo-07	365.425.606,0	105.031.432,5	43,09%	28,74%	1,53%	16,87%	0,80%	9,18%
abril-07	364.115.045,8	103.282.607,4	42,64%	28,37%	1,52%	16,84%	1,31%	14,65%
mayo-07	362.798.970,3	101.544.012,5	42,20%	27,99%	1,52%	16,81%	1,33%	14,81%
junio-07	361.477.356,4	100.393.799,9	41,77%	27,77%	1,51%	16,72%	0,77%	8,87%
julio-07	360.160.610,4	98.783.980,9	41,33%	27,43%	1,51%	16,69%	1,24%	13,95%
agosto-07	358.838.323,2	97.421.136,6	40,91%	27,15%	1,50%	16,63%	1,02%	11,54%
septiembre-07	357.510.471,3	96.000.767,8	40,48%	26,85%	1,50%	16,59%	1,09%	12,34%
octubre-07	356.177.031,4	94.815.177,8	40,07%	26,62%	1,49%	16,51%	0,87%	9,90%
noviembre-07	354.837.980,0	93.668.706,7	39,65%	26,40%	1,49%	16,44%	0,84%	9,59%
diciembre-07	353.493.293,3	92.475.277,8	39,24%	26,16%	1,48%	16,37%	0,90%	10,27%
enero-08	352.150.345,0	91.072.415,0	38,83%	25,86%	1,48%	16,33%	1,14%	12,87%

Date	Real Outstanding		1,03%	Remaining at the end of the month	Average Single monthly mortality	CPR	Monthly Single monthly mortality	CPR
			Prepayment vector					
								3,90%
febrero-08	350.801.745,0	90.178.994,2	38,43%	25,71%	1,47%	16,24%	0,60%	6,97%
marzo-08	349.447.469,8	88.957.504,4	38,04%	25,46%	1,46%	16,18%	0,97%	11,06%
abril-08	348.087.495,2	87.358.089,4	37,64%	25,10%	1,46%	16,18%	1,41%	15,71%
mayo-08	346.721.797,5	85.556.925,8	37,25%	24,68%	1,46%	16,20%	1,68%	18,36%
junio-08	345.350.352,4	84.237.854,7	36,87%	24,39%	1,46%	16,17%	1,15%	12,97%
julio-08	343.982.411,4	83.150.819,9	36,49%	24,17%	1,45%	16,11%	0,90%	10,26%
agosto-08	342.608.713,7	82.088.148,7	36,11%	23,96%	1,45%	16,05%	0,88%	10,09%
septiembre-08	341.229.234,9	81.307.334,0	35,74%	23,83%	1,44%	15,96%	0,55%	6,41%
octubre-08	339.843.950,8	80.607.800,6	35,37%	23,72%	1,43%	15,86%	0,46%	5,34%
noviembre-08	338.452.837,1	79.913.268,5	35,00%	23,61%	1,42%	15,76%	0,45%	5,32%
diciembre-08	337.055.869,0	79.110.607,2	34,64%	23,47%	1,41%	15,68%	0,59%	6,90%
enero-09	335.667.288,9	78.397.347,6	34,28%	23,36%	1,40%	15,59%	0,49%	5,74%
febrero-09	334.272.865,3	77.963.628,1	33,93%	23,32%	1,39%	15,46%	0,14%	1,65%
marzo-09	332.872.573,4	77.088.351,3	33,58%	23,16%	1,38%	15,40%	0,71%	8,16%
abril-09	331.466.388,7	76.151.863,4	33,23%	22,97%	1,38%	15,34%	0,80%	9,14%
mayo-09	330.054.286,3	75.640.093,4	32,89%	22,92%	1,37%	15,23%	0,25%	2,92%
junio-09	328.636.241,2	74.782.635,8	32,55%	22,76%	1,36%	15,17%	0,71%	8,16%
julio-09	327.233.118,9	74.079.720,5	32,21%	22,64%	1,35%	15,09%	0,52%	6,01%
agosto-09	325.824.091,8	73.119.413,8	31,88%	22,44%	1,35%	15,04%	0,87%	9,95%
septiembre-09	324.409.135,0	72.373.766,9	31,55%	22,31%	1,34%	14,97%	0,59%	6,83%
octubre-09	322.988.223,6	71.540.102,4	31,22%	22,15%	1,34%	14,91%	0,72%	8,27%
noviembre-09	321.561.332,5	70.843.524,9	30,90%	22,03%	1,33%	14,84%	0,53%	6,23%
diciembre-09	320.128.436,6	70.075.071,7	30,58%	21,89%	1,32%	14,78%	0,64%	7,44%
enero-10	318.700.982,4	69.407.998,1	30,26%	21,78%	1,32%	14,70%	0,51%	5,93%
febrero-10	317.267.521,0	68.883.690,5	29,95%	21,71%	1,31%	14,61%	0,31%	3,62%
marzo-10	315.828.027,1	68.079.926,9	29,64%	21,56%	1,30%	14,56%	0,72%	8,27%
abril-10	314.382.475,4	67.331.944,8	29,33%	21,42%	1,30%	14,50%	0,64%	7,46%
mayo-10	312.930.840,2	66.681.412,3	29,03%	21,31%	1,29%	14,44%	0,51%	5,91%
junio-10	311.473.096,1	65.850.842,7	28,73%	21,14%	1,29%	14,39%	0,78%	9,01%
julio-10	310.020.928,4	65.170.200,7	28,43%	21,02%	1,28%	14,33%	0,57%	6,63%
agosto-10	308.562.649,5	64.720.129,2	28,14%	20,97%	1,27%	14,24%	0,22%	2,62%
septiembre-10	307.098.233,7	64.222.840,5	27,85%	20,91%	1,26%	14,16%	0,30%	3,49%
octubre-10	305.627.655,1	63.659.901,9	27,56%	20,83%	1,26%	14,09%	0,40%	4,69%
noviembre-10	304.150.887,9	63.183.559,8	27,27%	20,77%	1,25%	14,00%	0,27%	3,15%
diciembre-10	302.667.905,9	62.574.931,8	26,99%	20,67%	1,24%	13,94%	0,48%	5,59%
enero-11	301.201.153,4	61.684.530,3	26,71%	20,48%	1,24%	13,91%	0,94%	10,75%
febrero-11	299.728.228,4	61.178.183,47	26,44%	20,41%	1,23%	13,84%	0,33%	3,93%
marzo-11	298.249.104,8	60.526.819,9	26,16%	20,29%	1,23%	13,79%	0,57%	6,68%
abril-11	296.763.756,6	60.037.298,6	25,89%	20,23%	1,22%	13,71%	0,31%	3,68%
mayo-11	295.272.157,5	59.570.470,7	25,62%	20,17%	1,21%	13,64%	0,28%	3,27%
junio-11	293.774.281,3	59.035.458,4	25,36%	20,10%	1,21%	13,57%	0,39%	4,61%

Date	Real Outstanding		Remaining at the end of the month		Average Single monthly mortality	CPR	Monthly Single monthly mortality	CPR
	1,03%							
	Prepayment vector							
								3,90%
julio-11	292.290.634,9	58.463.062,2	25,10%	20,00%	1,20%	13,52%	0,47%	5,46%
agosto-11	290.800.744,9	57.974.898,2	24,84%	19,94%	1,20%	13,45%	0,33%	3,85%
septiembre-11	289.304.584,9	57.499.936,9	24,58%	19,88%	1,19%	13,38%	0,31%	3,61%
octubre-11	287.802.128,6	56.961.821,9	24,33%	19,79%	1,18%	13,32%	0,42%	4,91%
noviembre-11	286.293.349,4	56.377.271,8	24,08%	19,69%	1,18%	13,27%	0,50%	5,89%
diciembre-11	284.778.220,8	55.786.401,7	23,83%	19,59%	1,17%	13,22%	0,52%	6,08%
enero-12	283.280.151,5	55.100.114,3	23,58%	19,45%	1,17%	13,18%	0,71%	8,17%
febrero-12	281.775.777,9	54.677.183,7	23,34%	19,40%	1,16%	13,11%	0,24%	2,82%
marzo-12	280.265.073,3	54.284.122,3	23,10%	19,37%	1,16%	13,04%	0,18%	2,18%
abril-12	278.748.011,2	53.747.585,9	22,86%	19,28%	1,15%	12,99%	0,45%	5,26%
mayo-12	277.224.564,7	53.349.080,2	22,62%	19,24%	1,15%	12,92%	0,20%	2,33%
junio-12	275.694.707,1	52.790.130,2	22,39%	19,15%	1,14%	12,87%	0,50%	5,82%
julio-12	274.190.230,1	52.297.273,1	22,15%	19,07%	1,14%	12,81%	0,39%	4,58%
agosto-12	272.679.421,7	51.801.946,8	21,93%	19,00%	1,13%	12,76%	0,40%	4,68%
septiembre-12	271.162.255,4	51.328.311,8	21,70%	18,93%	1,13%	12,70%	0,36%	4,23%
octubre-12	269.638.704,2	50.833.065,7	21,47%	18,85%	1,12%	12,65%	0,41%	4,76%
noviembre-12	268.108.741,5	50.318.615,1	21,25%	18,77%	1,12%	12,61%	0,45%	5,24%
diciembre-12	266.572.340,2	49.798.821,6	21,03%	18,68%	1,11%	12,56%	0,46%	5,41%
enero-13	265.051.533,3	49.234.420,4	20,82%	18,58%	1,11%	12,52%	0,57%	6,59%
febrero-13	263.524.326,2	48.797.974,1	20,60%	18,52%	1,10%	12,47%	0,31%	3,68%
marzo-13	261.990.692,2	48.327.204,1	20,39%	18,45%	1,10%	12,42%	0,39%	4,52%
abril-13	260.450.604,2	47.903.838,1	20,18%	18,39%	1,09%	12,36%	0,29%	3,42%
mayo-13	258.904.034,9	47.487.232,9	19,97%	18,34%	1,09%	12,30%	0,28%	3,28%
junio-13	257.350.957,2	46.965.860,9	19,76%	18,25%	1,08%	12,26%	0,50%	5,85%
julio-13	255.807.272,4	46.570.982,4	19,56%	18,21%	1,08%	12,21%	0,24%	2,87%
agosto-13	254.257.091,4	46.100.287,5	19,35%	18,13%	1,07%	12,16%	0,41%	4,78%
septiembre-13	252.700.386,6	45.651.534,8	19,15%	18,07%	1,07%	12,12%	0,36%	4,27%
octubre-13	251.137.130,8	45.269.836,5	18,96%	18,03%	1,07%	12,06%	0,22%	2,59%
noviembre-13	249.567.296,2	44.858.155,5	18,76%	17,97%	1,06%	12,01%	0,29%	3,38%
diciembre-13	247.990.855,2	44.408.974,2	18,57%	17,91%	1,06%	11,96%	0,37%	4,37%
enero-14	246.475.622,5	43.974.762,1	18,37%	17,84%	1,05%	11,92%	0,37%	4,34%
febrero-14	244.954.013,2	43.542.838,8	18,18%	17,78%	1,05%	11,87%	0,37%	4,32%
marzo-14	243.426.000,5	43.171.929,6	18,00%	17,74%	1,04%	11,82%	0,23%	2,72%
abril-14	241.891.557,4	42.752.252,7	17,81%	17,67%	1,04%	11,78%	0,34%	4,05%
mayo-14	240.350.656,8	42.364.514,9	17,63%	17,63%	1,03%	11,73%	0,27%	3,21%

UCI 6

DEAL 457.000.000
 MEZZ. DECLINN 8,80%
 MEZZ. STOPS DECLINN 1,00%
 VIDA RESIDUAL DESDE 09/05/2014

FECHA	PRINCIPAL AVAILABLE	SENIOR NOTES	MEZZANIE NOTES	SERIE A PRINCIPAL	0,25		
					VIDA MEDIA	SERIE B PRINCIPAL	VIDA MEDIA
08/07/2000		436.400.000,00	20.600.000,00				
08/08/2000	1	0	436.400.000,00	0	0	0	0
08/09/2000	1	0	436.400.000,00	0	0	0	0
08/10/2000	1	0	436.400.000,00	0	0	0	0
08/11/2000	1	27.734.497	436.400.000,00	27.734.497	-136.731.067.956	0	0
08/12/2000	1	0	408.665.503,46	0	0	0	0
08/01/2001	1	0	408.665.503,46	0	0	0	0
08/02/2001	1	15.893.915	408.665.503,46	15.893.915	-76.894.762.233	0	0
09/03/2001	1	0	392.771.588,15	0	0	0	0
09/04/2001	1	0	392.771.588,15	0	0	0	0
09/05/2001	1	15.355.970	392.771.588,15	15.355.970	-72.910.147.277	0	0
09/06/2001	1	0	377.415.617,79	0	0	0	0
09/07/2001	1	0	377.415.617,79	0	0	0	0
09/08/2001	1	14.835.461	377.415.617,79	14.835.461	-69.073.906.948	0	0
09/09/2001	1	0	362.580.156,68	0	0	0	0
09/10/2001	1	0	362.580.156,68	0	0	0	0
09/11/2001	1	14.331.835	362.580.156,68	14.331.835	-65.410.496.428	0	0
09/12/2001	1	0	348.248.321,35	0	0	0	0
09/01/2002	1	0	348.248.321,35	0	0	0	0
09/02/2002	1	13.844.558	348.248.321,35	13.844.558	-61.912.863.505	0	0
09/03/2002	1	0	334.403.763,32	0	0	0	0
09/04/2002	1	0	334.403.763,32	0	0	0	0
09/05/2002	1	13.373.111	334.403.763,32	13.373.111	-58.614.345.446	0	0
09/06/2002	1	0	321.030.652,34	0	0	0	0
09/07/2002	1	0	321.030.652,34	0	0	0	0
09/08/2002	1	12.914.966	321.030.652,34	12.914.966	-55.418.121.251	0	0
09/09/2002	1	0	308.115.685,84	0	0	0	0
09/10/2002	1	0	308.115.685,84	0	0	0	0
09/11/2002	1	12.472.801	308.115.685,84	12.472.801	-52.373.291.959	0	0
09/12/2002	1	0	295.642.884,71	0	0	0	0
09/01/2003	1	0	295.642.884,71	0	0	0	0
09/02/2003	1	12.044.628	295.642.884,71	12.044.628	-49.467.287.186	0	0
09/03/2003	1	0	283.598.256,71	0	0	0	0
09/04/2003	1	0	283.598.256,71	0	0	0	0
09/05/2003	1	11.631.156	283.598.256,71	11.631.156	-46.733.985.540	0	0
09/06/2003	1	0	271.967.100,53	0	0	0	0
09/07/2003	1	0	271.967.100,53	0	0	0	0
09/08/2003	1	11.228.180	271.967.100,53	11.228.180	-44.081.834.177	0	0
09/09/2003	1	0	260.738.920,65	0	0	0	0
09/10/2003	1	0	260.738.920,65	0	0	0	0
09/11/2003	1	10.840.311	260.738.920,65	10.840.311	-41.561.752.700	0	0
09/12/2003	1	0	249.898.609,57	0	0	0	0
09/01/2004	1	0	249.898.609,57	0	0	0	0
09/02/2004	1	10.466.138	249.898.609,57	10.466.138	-39.164.286.539	0	0
08/03/2004	1	0	239.432.472,07	0	0	0	0
08/04/2004	1	0	239.432.472,07	0	0	0	0
08/05/2004	1	10.104.627	239.432.472,07	9.719.379	-35.504.890.790	385.248	-1.407.310.189
08/06/2004	1	0	229.713.093,26	0	0	0	0
08/07/2004	1	0	229.713.093,26	0	0	0	0
08/08/2004	1	9.750.702	229.713.093,26	8.962.042	-31.913.833.035	788.660	-2.808.417.307
08/09/2004	1	0	220.751.050,84	0	0	0	0
08/10/2004	1	0	220.751.050,84	0	0	0	0
08/11/2004	1	9.410.828	220.751.050,84	8.649.658	-30.005.664.539	761.170	-2.640.498.479

FECHA		PRINCIPAL AVAILABLE	SENIOR NOTES	MEZZANIE NOTES	SERIE A PRINCIPAL	VIDA MEDIA	SERIE B PRINCIPAL	VIDA MEDIA
08/12/2004	1	0	212.101.392,57	18.664.922,55	0	0	0	0
08/01/2005	1	0	212.101.392,57	18.664.922,55	0	0	0	0
08/02/2005	1	9.082.114	212.101.392,57	18.664.922,55	8.347.531	-28.189.612.153	734.583	-2.480.685.869
09/03/2005	1	0	203.753.861,58	17.930.339,82	0	0	0	0
09/04/2005	1	0	203.753.861,58	17.930.339,82	0	0	0	0
09/05/2005	1	8.765.395	203.753.861,58	17.930.339,82	8.056.429	-26.481.483.569	708.966	-2.330.370.554
09/06/2005	1	0	195.697.432,14	17.221.374,03	0	0	0	0
09/07/2005	1	0	195.697.432,14	17.221.374,03	0	0	0	0
09/08/2005	1	8.455.711	195.697.432,14	17.221.374,03	7.771.793	-24.830.878.051	683.918	-2.185.117.268
09/09/2005	1	0	187.925.639,33	16.537.456,26	0	0	0	0
09/10/2005	1	0	187.925.639,33	16.537.456,26	0	0	0	0
09/11/2005	1	8.158.587	187.925.639,33	16.537.456,26	7.498.702	-23.268.470.856	659.886	-2.047.625.435
09/12/2005	1	0	180.426.937,79	15.877.570,53	0	0	0	0
09/01/2006	1	0	180.426.937,79	15.877.570,53	0	0	0	0
09/02/2006	1	7.867.781	180.426.937,79	15.877.570,53	7.231.416	-21.773.794.152	636.365	-1.916.093.885
09/03/2006	1	0	173.195.521,60	15.241.205,90	0	0	0	0
09/04/2006	1	0	173.195.521,60	15.241.205,90	0	0	0	0
09/05/2006	1	7.589.561	173.195.521,60	15.241.205,90	6.975.699	-20.382.993.303	613.862	-1.793.703.411
09/06/2006	1	0	166.219.822,32	14.627.344,36	0	0	0	0
09/07/2006	1	0	166.219.822,32	14.627.344,36	0	0	0	0
09/08/2006	1	7.316.743	166.219.822,32	14.627.344,36	6.724.947	-19.031.600.840	591.795	-1.674.780.874
09/09/2006	1	0	159.494.875,03	14.035.549,00	0	0	0	0
09/10/2006	1	0	159.494.875,03	14.035.549,00	0	0	0	0
09/11/2006	1	7.056.410	159.494.875,03	14.035.549,00	6.485.671	-17.757.766.325	570.739	-1.562.683.437
09/12/2006	1	0	153.009.204,35	13.464.809,98	0	0	0	0
09/01/2007	1	0	153.009.204,35	13.464.809,98	0	0	0	0
09/02/2007	1	6.803.474	153.009.204,35	13.464.809,98	6.253.193	-16.545.949.762	550.281	-1.456.043.579
09/03/2007	1	0	146.756.010,94	12.914.528,96	0	0	0	0
09/04/2007	1	0	146.756.010,94	12.914.528,96	0	0	0	0
09/05/2007	1	6.561.261	146.756.010,94	12.914.528,96	6.030.571	-15.420.169.317	530.690	-1.356.974.900
09/06/2007	1	0	140.725.440,22	12.383.838,74	0	0	0	0
09/07/2007	1	0	140.725.440,22	12.383.838,74	0	0	0	0
09/08/2007	1	6.320.725	140.725.440,22	12.383.838,74	5.809.490	-14.320.392.429	511.235	-1.260.194.534
09/09/2007	1	0	134.915.950,39	11.872.603,63	0	0	0	0
09/10/2007	1	0	134.915.950,39	11.872.603,63	0	0	0	0
09/11/2007	1	6.092.674	134.915.950,39	11.872.603,63	5.599.884	-13.288.525.184	492.790	-1.169.390.216
09/12/2007	1	0	129.316.066,20	11.379.813,83	0	0	0	0
09/01/2008	1	0	129.316.066,20	11.379.813,83	0	0	0	0
09/02/2008	1	5.870.723	129.316.066,20	11.379.813,83	5.395.885	-12.308.013.539	474.838	-1.083.105.191
08/03/2008	1	0	123.920.181,27	10.904.975,95	0	0	0	0
08/04/2008	1	0	123.920.181,27	10.904.975,95	0	0	0	0
08/05/2008	1	5.659.147	123.920.181,27	10.904.975,95	5.201.422	-11.401.517.305	457.725	-1.003.333.523
08/06/2008	1	0	118.718.759,14	10.447.250,80	0	0	0	0
08/07/2008	1	0	118.718.759,14	10.447.250,80	0	0	0	0
08/08/2008	1	5.450.710	118.718.759,14	10.447.250,80	5.009.844	-10.520.672.625	440.866	-925.819.191
08/09/2008	1	0	113.708.915,03	10.006.384,52	0	0	0	0
08/10/2008	1	0	113.708.915,03	10.006.384,52	0	0	0	0
08/11/2008	1	5.252.750	113.708.915,03	10.006.384,52	4.827.896	-9.694.414.357	424.855	-853.108.463
08/12/2008	1	0	108.881.019,43	9.581.529,71	0	0	0	0
08/01/2009	1	0	108.881.019,43	9.581.529,71	0	0	0	0
08/02/2009	1	5.055.005	108.881.019,43	9.581.529,71	4.646.144	-8.902.011.908	408.861	-783.377.048
09/03/2009	1	0	104.234.875,43	9.172.669,04	0	0	0	0
09/04/2009	1	0	104.234.875,43	9.172.669,04	0	0	0	0
09/05/2009	1	4.868.971	104.234.875,43	9.172.669,04	4.475.157	-8.171.637.435	393.814	-719.104.094
09/06/2009	1	0	99.759.718,02	8.778.855,19	0	0	0	0
09/07/2009	1	0	99.759.718,02	8.778.855,19	0	0	0	0
09/08/2009	1	4.680.603	99.759.718,02	8.778.855,19	4.302.024	-7.459.710.248	378.578	-656.454.502
09/09/2009	1	0	95.457.693,65	8.400.277,04	0	0	0	0
09/10/2009	1	0	95.457.693,65	8.400.277,04	0	0	0	0

FECHA		PRINCIPAL AVAILABLE	SENIOR NOTES	MEZZANIE NOTES	SERIE A PRINCIPAL	VIDA MEDIA	SERIE B PRINCIPAL	VIDA MEDIA
09/11/2009	1	4.505.570	95.457.693,65	8.400.277,04	4.141.149	-6.799.766.038	364.421	-598.379.411
09/12/2009	1	0	91.316.545,03	8.035.855,96	0	0	0	0
09/01/2010	1	0	91.316.545,03	8.035.855,96	0	0	0	0
09/02/2010	1	4.336.111	91.316.545,03	8.035.855,96	3.985.396	-6.177.363.546	350.715	-543.607.992
09/03/2010	1	0	87.331.149,20	7.685.141,13	0	0	0	0
09/04/2010	1	0	87.331.149,20	7.685.141,13	0	0	0	0
09/05/2010	1	4.175.955	87.331.149,20	7.685.141,13	3.838.194	-5.607.601.136	337.761	-493.468.900
09/06/2010	1	0	83.492.955,40	7.347.380,08	0	0	0	0
09/07/2010	1	0	83.492.955,40	7.347.380,08	0	0	0	0
09/08/2010	1	4.017.968	83.492.955,40	7.347.380,08	3.692.985	-5.055.696.339	324.983	-444.901.278
09/09/2010	1	0	79.799.970,49	7.022.397,40	0	0	0	0
09/10/2010	1	0	79.799.970,49	7.022.397,40	0	0	0	0
09/11/2010	1	3.868.762	79.799.970,49	7.022.397,40	3.555.848	-4.540.817.504	312.915	-399.591.940
09/12/2010	1	0	76.244.122,80	6.709.482,81	0	0	0	0
09/01/2011	1	0	76.244.122,80	6.709.482,81	0	0	0	0
09/02/2011	1	3.715.929	76.244.122,80	6.709.482,81	3.415.376	-4.047.220.321	300.553	-356.155.388
09/03/2011	1	0	72.828.747,00	6.408.929,74	0	0	0	0
09/04/2011	1	0	72.828.747,00	6.408.929,74	0	0	0	0
09/05/2011	1	3.574.514	72.828.747,00	6.408.929,74	3.285.399	-3.600.797.030	289.115	-316.870.139
09/06/2011	1	0	69.543.348,25	6.119.814,65	0	0	0	0
09/07/2011	1	0	69.543.348,25	6.119.814,65	0	0	0	0
09/08/2011	1	3.433.528	69.543.348,25	6.119.814,65	3.155.817	-3.168.439.871	277.712	-278.822.709
09/09/2011	1	0	66.387.531,65	5.842.102,78	0	0	0	0
09/10/2011	1	0	66.387.531,65	5.842.102,78	0	0	0	0
09/11/2011	1	3.302.683	66.387.531,65	5.842.102,78	3.035.554	-2.768.425.620	267.129	-243.621.455
09/12/2011	1	0	63.351.977,24	5.574.974,00	0	0	0	0
09/01/2012	1	0	63.351.977,24	5.574.974,00	0	0	0	0
09/02/2012	1	3.170.347	63.351.977,24	5.574.974,00	2.913.922	-2.389.416.263	256.425	-210.268.631
08/03/2012	1	0	60.438.054,97	5.318.548,84	0	0	0	0
08/04/2012	1	0	60.438.054,97	5.318.548,84	0	0	0	0
08/05/2012	1	3.048.259	60.438.054,97	5.318.548,84	2.801.709	-2.048.049.266	246.550	-180.228.335
08/06/2012	1	0	57.636.345,98	5.071.998,45	0	0	0	0
08/07/2012	1	0	57.636.345,98	5.071.998,45	0	0	0	0
08/08/2012	1	2.921.739	57.636.345,98	5.071.998,45	2.685.422	-1.715.984.513	236.317	-151.006.637
08/09/2012	1	0	54.950.924,21	4.835.681,33	0	0	0	0
08/10/2012	1	0	54.950.924,21	4.835.681,33	0	0	0	0
08/11/2012	1	2.806.872	54.950.924,21	4.835.681,33	2.541.191	-1.390.031.319	265.681	-145.327.688
08/12/2012	1	0	52.409.733,50	4.570.000,00	0	0	0	0
08/01/2013	1	0	52.409.733,50	4.570.000,00	0	0	0	0
08/02/2013	1	2.693.706	52.409.733,50	4.570.000,00	2.693.706	-1.225.636.454	0	0
09/03/2013	1	0	49.716.027,01	4.570.000,00	0	0	0	0
09/04/2013	1	0	49.716.027,01	4.570.000,00	0	0	0	0
09/05/2013	1	2.589.178	49.716.027,01	4.570.000,00	2.589.178	-945.049.985	0	0
09/06/2013	1	0	47.126.848,97	4.570.000,00	0	0	0	0
09/07/2013	1	0	47.126.848,97	4.570.000,00	0	0	0	0
09/08/2013	1	2.486.524	47.126.848,97	4.570.000,00	2.486.524	-678.820.974	0	0
09/09/2013	1	0	44.640.325,25	4.570.000,00	0	0	0	0
09/10/2013	1	0	44.640.325,25	4.570.000,00	0	0	0	0
09/11/2013	1	2.390.613	44.640.325,25	4.570.000,00	2.390.613	-432.700.922	0	0
09/12/2013	1	0	42.249.712,42	4.570.000,00	0	0	0	0
09/01/2014	1	0	42.249.712,42	4.570.000,00	0	0	0	0
09/02/2014	1	2.276.295	42.249.712,42	4.570.000,00	2.276.295	-202.590.251	0	0
09/03/2014	1	0	39.973.417,46	4.570.000,00	0	0	0	0
09/04/2014	1	0	39.973.417,46	4.570.000,00	0	0	0	0
09/05/2014	1	2.178.907	39.973.417,46	4.570.000,00	2.178.907	0	0	0
09/06/2014	1	0	37.794.510,70	4.570.000,00	0	0	0	0
09/07/2014	1	0	37.794.510,70	4.570.000,00	0	0	0	0
09/08/2014	1	42.364.515	37.794.510,70	4.570.000,00	37.794.511	3.477.094.984	4.570.000	420.440.000