



F.T.H.: BANESTO 4

DESIREE PEREZ MONTORO

ANALYST

SANTANDER DE TITULIZACION, S.G.F.T, S.A.

CIUDAD GRUPO SANTANDER

28660 BOADILLA DEL MONTE

desperez@gruposantander.com

Tel: 912893278



NAME OF THE FUND:

F.T.H.: BANESTO 4

INFORMATION AT:

QUARTER/SEMESTER:

June 15, 2009

-

September 15,

YEAR:

2009

Acting on behalf of Santander de Titulización S.G.F.T., S.A. as General Manager:	Signature:
IGNACIO ORTEGA GAVARA - GENERAL MANAGER	

I. DATA OF THE FUND

Constitution Date	December 11, 2003	Paying Agent	BANESTO	
Disbursement Date	December 18, 2003	Negotiation Market	AIAF	
Final Date of Redemption	March 15, 2038	Ratings Agencies	STANDARD & POORS	
Management Company	SANTANDER DE TITULIZACION, S.G.F.T, S.A.	Rating	Initial	Current
Credit Rights's Seller	BANESTO	CLASS A	AAA	AAA
		CLASS B	A	A

II. SECURITIES ISSUED CHARGED TO THE FUND: SECURITISATION BONDS

CLASS PRIORITY ISIN CODE	NUM BONDS	NOMINAL			
			Initial	Current	%Act/In
CLASS A ES0339774004	14.550	Nominal per Bond	100.000,00	34.204,46	
		Total Nominal	1.455.000.000,00	497.674.893,00	34,20 %
CLASS B ES0339774012	450	Nominal per Bond	100.000,00	100.000,00	
		Total Nominal	45.000.000,00	45.000.000,00	100,00 %

REDEMPTION AND INTEREST OF THE BONDS					
Current			Next		
Payment Date of the Current Period September 15, 2009			Next Payment Date December 15, 2009		
	Redemption of the Bonds	Gross Interest	Interest Rate	Gross Interest Next Coupon	Net Interest Next Coupon
CLASS A	1.440,87 €	134,55 €	0,9730 %	84,13 €	68,99 €
CLASS B	0,00 €	492,46 €	1,4230 %	359,70 €	294,95 €
Accrued amortisation due not payed	0,00 €				
Scheduled Amortisation	NO				



III. ASSET PURCHASED BY THE FUND: CREDIT RIGHTS

CREDIT RIGHTS	ISSUE DATE	CURRENT DATE
Number of CR's	19.736	9.943
CR's Outstanding to be amortised	1.500.001.687,69	542.674.918,04
CR's Outstanding per Loan to be amortised	76.003,33	54.578,58
Interest Rate	3,73 %	4,42 %

PREPAYMENT RATE	CURRENT SITUATION
Monthly Single Rate	7,96 %
Average Monthly Single Rate	9,17 %
Constant Prepayment Rate from Constitution	12,60 %

CURRENT DELINQUENCY	Up to 1 month	From 1 to 6 months	Greater than 6 months
Debt Due (Principal + Interest)	177.081,08	98.865,33	5.931,40
Debt to be amortised	0,00	0,00	542.528.737,10
Total Debt	177.081,08	98.865,33	542.534.668,50

F.T.H.: BANESTO 4

QUARTERLY BONDS PAYOUT REPORT

September 15, 2009

BONDS. PRINCIPAL	
Previous Balance	563.639.551,50 €
Principal Amortised	20.964.658,50 €
Outstanding Balance	542.674.893,00 €
% of Initial Balance	36,18 %
Principal accrued and unpaid	0,00 €

DATA	
Determination Date	September 08, 2009
Payment Date	September 15, 2009
Last Payment Date	June 15, 2009
Number of Days (Act/360)	92
Reference Interest Rate (%)	0,773 %
Next Payment Date	December 15, 2009

INTEREST PAID	
CLASS A	1.957.702,50 €
CLASS B	221.607,00 €
Interest accrued and unpaid	0,00 €

RESIDUAL LIFE (YEARS)		
	INITIAL	September 15, 2009
CLASS A	8,90	3,62
CLASS B	16,80	3,88

F.T.H.: BANESTO 4

QUARTERLY COLLATERAL REPORT

September 15, 2009

PRINCIPAL	
Previous Balance	563.639.568,08 €
Principal Amortised	20.964.650,04 €
Outstanding Balance	542.674.918,04 €
Number of Credit Rights	9.943
LTV	48,85%

INTEREST	
Interest received during relevant period	6.599.591,47 €
Interest accrued during relevant period	6.600.039,50 €

PRINCIPAL BALANCE IN ARREARS					
	UP to 30 DAYS	30 to 60 DAYS	60 to 90 DAYS	90 to 180 DAYS	MORE THAN 180 DAYS
Principal Balance in Arrears	97.921,51 €	26.343,69 €	12.213,28 €	6.671,93 €	303,53 €
Interest accrued on Credit Rights in Arrears	79.159,57 €	28.226,31 €	14.852,67 €	10.557,45 €	2.900,87 €
Outstanding Balance	20.000.849,20 €	4.522.157,58 €	2.156.618,13 €	1.922.756,94 €	679.954,54 €
Number of Credit Rights	349	72	38	26	17
% of Outstanding Balance	3,69 %	0,83 %	0,40 %	0,35 %	0,13%

WRITE OFF	
Cumulative WRITE OFF as of previous balance	160.154,65 €
Difference in Actual Period	318.124,28 €
Cumulative WRITE OFF up to date	478.278,93 €

F.T.H.: BANESTO 4

QUARTERLY COLLATERAL REPORT

September 15, 2009

CONTENTIOUS / JUDICIAL	
Last balance	807.753,15 €
Difference in Actual Period	-365.879,42 €
Current balance	441.873,73 €

F.T.H.: BANESTO 4

QUARTERLY REPORT - ALLOCATION OF CASH

September 15, 2009

TOTAL CASH RECEIVED END OF PERIOD	27.516.658,65 €
CASH RECEIVED - PRINCIPAL	
Amortisation of Credit Rights	20.555.481,45 €
CASH RECEIVED - INTEREST	
Interest received from Credit Rights	6.599.591,47 €
Interest received under GIC	269.622,34 €
CONTENTIOUS	92.739,72 €
INCOMES/EXPENSES OF TRANSTORY PROPERTIES	0,00 €
RESERVE FUNDS	0,00 €
OTHERS	-776,33 €

TREASURY ACCOUNT STATEMENT	6.958.755,37 €
PRINCIPAL RESERVE FUND	
Previous Balance	5.636.395,68 €
Period utilization	209.646,50 €
Outstanding Balance	5.426.749,18 €
SECONDARY RESERVE FUND	
Previous Balance	1.547.729,68 €
Period utilization	15.723,49 €
Outstanding Balance	1.532.006,19 €
WITHHOLDING TAXES	0,00 €
ISSUE EXPENSES WITHHELD	0,00 €
OTHERS	0,00 €

TOTAL CASH PAID END OF PERIOD	27.516.658,65 €
ORDINARY EXPENSES	199,25 €
SGFT FEE	35.517,01 €
SWAP COLLECTION CLASS A	5.818.294,02 €
SWAP PAYMENT CLASS A	-1.957.633,80 €
INTEREST PAID TO CLASS A BONDHOLDERS	1.957.702,50 €
PRINCIPAL WITHHOLDING CLASS A	20.964.658,50 €
PRINCIPAL WITHHOLDING CLASS B	0,00 €
SWAP COLLECTION CLASS B	-221.605,00 €
SWAP PAYMENT CLASS B	504.826,97 €
INTEREST PAID TO CLASS B BONDHOLDERS	221.607,00 €
INTEREST PAID TO SUBORDINATED LOAN A	84.040,60 €
REPAYMENT OF SUBORDINATED LOAN A	225.369,99 €
FIXED FEE IN FAVOUR OF BANESTO	6.000,00 €
VARIABLE FEE IN FAVOUR BANESTO	103.051,61 €
USE OF PRINCIPAL AND SECONDARY RESERVE FUND	-225.369,99 €

F.T.H.: BANESTO 4

CREDIT ENHACEMENT AND SUBORDINATED LOAN

September 15, 2009

CREDIT ENHACEMENT		
CONCEPTS	INITIAL	September 15, 2009
SUBORDINATED ISSUE	3,00 %	8,29 %
PRINCIPAL RESERVE FUND	15.000.000,00 € (1,00 %)	5.426.749,18 € (1,00 %)
SECUNDARY RESERVE FUND	2.250.000,00 € (0,15 %)	1.532.006,19 € (0,28 %)
SUBORDINATED ISSUE	0,65%	0,65%

SUBORDINATED LOANS		
CONCEPTS	INITIAL	September 15, 2009
SUBORDINATED LOAN A		
Total Outstanding Subordinated Loan	20.386.000,00 €	6.960.447,64 €
Interest Rate	3,10%	3,77%

F.T.H.: BANESTO 4

TRIGGERS OF THE MODEL

September 15, 2009

TRIGGERS BONDS	
1. IF 1.a) IS HIGHER THAN 1.b) THERE IS NO REDEMPTION OF CLASS B:	
1.a) MP'S IN ARREARS OVER 90 DAYS	2.602.711,48 €
1.b) 7% MP'S OUTSTANDING BALANCE	37.987.244,26 €

THIS LEVEL HAS NOT BEEN REACHED. NEVERTHELESS CLASS B HASN'T BEGUN THE REDEMPTION.

RESERVE FUND'S BOND'S	
1. IF 1.a) IS HIGHER THAN 1.b) THERE IS NO REDEMPTION PRINCIPAL AND SECONDARY RESERVE FUND:	
1.a) MP'S IN ARREARS OVER 90 DAYS	2.602.711,48 €
1.b) 2,5% MP'S OUTSTANDING BALANCE	13.566.872,95 €

THIS LEVEL HAS NOT BEEN REACHED, SO THE PRINCIPAL AND SECONDARY RESERVE FUND HAVE DECREASED.

F.T.H.: BANESTO 4

DEFINITIONS

September 15, 2009

DETERMINATION DATE Means the date in which the Gestora will carry out the necessary calculations, on behalf of the Fund, for the distribution of the available funds at this date, according with the Order of Priority of Payments.

All the information regarding the Assets (Outstanding Balance of the Credit Rights, arrears' tables, transitory properties, stratification tables, etc.) are referred to this mentioned date.

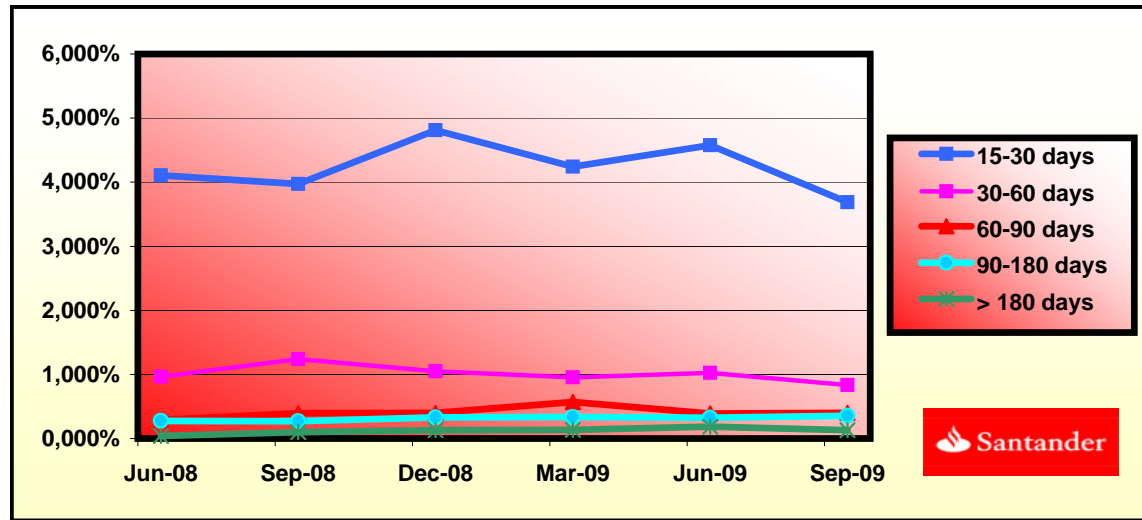
WRITE OFF Those loans that at a given date are unpaid for a period equal or higher to 12 or 18 months (according to Prospectus) of arrears in due payments.

CONTENTIOUS / JUDICIAL Loans in which the Originator will take legal actions. This amount is included in the bucket > 180 days in arrears.

FONDO DE TITULIZACIÓN HIPOTECARIA
BANESTO 4

HISTORICAL ARREARS REPORT
SEPTIEMBRE 15TH, 2009

Date	Jun-08	Sep-08	Dec-08	Mar-09	Jun-09	Sep-09
15-30 days	4,106%	3,970%	4,811%	4,244%	4,577%	3,686%
30-60 days	0,965%	1,241%	1,048%	0,953%	1,026%	0,833%
60-90 days	0,291%	0,394%	0,401%	0,571%	0,388%	0,397%
90-180 days	0,277%	0,268%	0,332%	0,334%	0,323%	0,354%
> 180 days	0,042%	0,099%	0,131%	0,136%	0,184%	0,132%



**FONDO DE TITULIZACIÓN HIPOTECARIA
BANESTO 4**

**LTV
SEPTIEMBRE 15TH, 2009**

LTV (%)	OUTS. BALANC	% OUTSTANDING	LOANS	% LOANS
0,00 - 9,99	7.363,40	1,35%	722	7,26%
10,00 - 19,99	13.131,76	4,25%	1.018	10,23%
20,00 - 29,99	49.394,85	9,08%	1.256	12,63%
30,00 - 39,99	72.557,87	13,34%	1.390	13,97%
40,00 - 49,99	94.399,97	17,36%	1.470	14,78%
50,00 - 59,99	131.771,55	24,23%	1.884	18,94%
60,00 - 69,99	161.647,19	29,73%	2.149	21,61%
70,00 - 79,99	3.111,24	0,57%	51	0,51%
>80	242,00	0,04%	3	0,03%

BANESTO 4

DATE	OUTSTANDING BEFORE PREPAYMENT	REAL OUTSTANDING	PREPAYMENT VECTOR	REMAINING AT THE END OF THE MONTH	AVERAGE SINGLE MONTHLY MORTALITY	CPR	MONTHLY SINGLE MONTHLY MORTALITY	CPR	OUTSTANDING AFTER PREPAYMENT	PRINCIPAL AVAILABLE
			1,12%					9,17%		
	1.500.000.000,0		100,00%	100,00%					1.500.000.000,00	1.500.000.000,00
8-ene-04	1.495.729.806,1	1.484.079.397,59	98,88%	99,22%	0,78%	8,96%	0,78%	8,96%	1.479.042.131,15	
8-feb-04	1.491.447.086,3	1.467.151.720,99	97,78%	98,37%	0,82%	9,38%	0,86%	9,81%	1.458.352.949,23	
8-mar-04	1.487.151.803,8	1.448.706.233,63	96,69%	97,41%	0,87%	9,95%	0,97%	11,06%	1.437.929.168,68	62.070.831,32
8-abr-04	1.482.843.921,9	1.425.170.063,73	95,61%	96,11%	0,99%	11,22%	1,34%	14,93%	1.417.767.543,01	
8-may-04	1.478.523.403,5	1.407.660.576,34	94,54%	95,21%	0,98%	11,12%	0,94%	10,71%	1.397.864.864,27	
8-jun-04	1.474.190.211,6	1.386.380.191,70	93,49%	94,04%	1,02%	11,56%	1,22%	13,72%	1.378.217.962,66	59.711.206,02
8-jul-04	1.469.844.309,0	1.362.533.521,59	92,45%	92,70%	1,08%	12,19%	1,43%	15,87%	1.358.823.706,07	
8-ago-04	1.465.485.658,4	1.344.717.088,04	91,42%	91,76%	1,07%	12,10%	1,01%	11,51%	1.339.678.999,62	
8-sep-04	1.461.114.222,4	1.335.244.439,02	90,40%	91,39%	1,00%	11,32%	0,41%	4,78%	1.320.780.785,24	57.437.177,42
8-oct-04	1.456.729.963,5	1.314.658.386,81	89,39%	90,25%	1,02%	11,59%	1,25%	13,96%	1.302.126.041,25	
8-nov-04	1.452.332.844,2	1.295.869.428,02	88,39%	89,23%	1,03%	11,69%	1,13%	12,76%	1.283.711.781,90	
8-dic-04	1.447.922.826,6	1.276.785.759,00	87,40%	88,18%	1,04%	11,82%	1,17%	13,20%	1.265.535.057,00	55.245.728,24
8-ene-05	1.443.499.873,3	1.249.470.515,43	86,43%	86,56%	1,10%	12,48%	1,84%	19,97%	1.247.592.951,49	
8-feb-05	1.439.063.945,4	1.230.544.342,13	85,46%	85,51%	1,11%	12,56%	1,21%	13,60%	1.229.882.584,98	
8-mar-05	1.434.615.005,7	1.212.858.606,52	84,51%	84,54%	1,11%	12,57%	1,13%	12,76%	1.212.401.111,42	53.133.945,59
8-abr-05	1.430.153.015,9	1.189.310.534,68	83,57%	83,16%	1,15%	12,92%	1,64%	17,95%	1.195.145.718,65	
8-may-05	1.425.677.937,5	1.168.642.127,52	82,64%	81,97%	1,16%	13,09%	1,43%	15,87%	1.178.113.628,03	
8-jun-05	1.421.189.732,2	1.147.357.322,96	81,71%	80,73%	1,18%	13,30%	1,51%	16,70%	1.161.302.094,02	51.099.017,40
8-jul-05	1.416.689.801,4	1.125.227.264,58	80,80%	79,43%	1,20%	13,54%	1,62%	17,77%	1.144.709.567,29	
8-ago-05	1.412.176.670,8	1.104.796.032,79	79,90%	78,23%	1,22%	13,70%	1,50%	16,61%	1.128.332.181,33	
8-sep-05	1.407.650.301,7	1.090.810.910,79	79,01%	77,49%	1,21%	13,56%	0,95%	10,81%	1.112.167.288,00	49.134.806,02
8-oct-05	1.403.110.655,3	1.071.533.241,87	78,13%	76,37%	1,22%	13,68%	1,45%	16,07%	1.096.212.270,72	
8-nov-05	1.398.557.692,5	1.053.644.931,75	77,26%	75,34%	1,22%	13,74%	1,35%	15,04%	1.080.464.544,17	
8-dic-05	1.393.991.374,4	1.036.110.993,49	76,39%	74,33%	1,23%	13,79%	1,34%	14,97%	1.064.921.553,85	47.245.734,15
8-ene-06	1.389.419.729,0	1.012.469.118,85	75,54%	72,87%	1,26%	14,09%	1,96%	21,15%	1.049.586.869,84	
8-feb-06	1.384.834.673,4	996.130.174,83	74,70%	71,93%	1,26%	14,11%	1,29%	14,41%	1.034.451.785,93	
8-mar-06	1.380.236.168,2	978.998.721,89	73,87%	70,93%	1,26%	14,16%	1,39%	15,49%	1.019.513.839,79	45.407.714,06
8-abr-06	1.375.624.174,2	957.444.508,38	73,04%	69,60%	1,29%	14,39%	1,87%	20,31%	1.004.770.598,53	
8-may-06	1.370.998.651,6	935.849.620,04	72,23%	68,26%	1,31%	14,62%	1,93%	20,81%	990.219.658,29	
8-jun-06	1.366.359.560,8	919.799.144,84	71,42%	67,32%	1,31%	14,64%	1,38%	15,37%	975.858.643,98	43.655.195,81
8-jul-06	1.361.716.074,1	902.616.654,99	70,62%	66,29%	1,32%	14,72%	1,53%	16,93%	961.691.714,76	
8-ago-06	1.357.058.966,5	887.671.015,19	69,84%	65,41%	1,32%	14,72%	1,32%	14,72%	947.709.919,79	
8-sep-06	1.352.388.198,0	877.497.210,61	69,06%	64,89%	1,30%	14,55%	0,80%	9,24%	933.910.970,03	41.947.673,95
8-oct-06	1.347.703.728,6	863.203.424,90	68,29%	64,05%	1,30%	14,55%	1,29%	14,40%	920.292.603,79	
8-nov-06	1.343.005.518,1	849.769.844,98	67,52%	63,27%	1,30%	14,52%	1,21%	13,61%	906.852.586,45	
8-dic-06	1.338.293.526,2	837.627.577,62	66,77%	62,59%	1,29%	14,46%	1,08%	12,24%	893.588.710,14	40.322.259,89
8-ene-07	1.333.579.740,2	821.156.807,85	66,03%	61,58%	1,30%	14,55%	1,62%	17,80%	880.506.734,85	
8-feb-07	1.328.852.127,0	807.849.960,06	65,29%	60,79%	1,30%	14,54%	1,27%	14,22%	867.596.409,69	
8-mar-07	1.324.110.646,2	797.164.189,97	64,56%	60,20%	1,29%	14,46%	0,97%	11,03%	854.856.607,40	38.733.102,74
8-abr-07	1.319.355.257,1	784.899.478,92	63,84%	59,49%	1,29%	14,43%	1,18%	13,31%	842.282.226,26	
8-may-07	1.314.585.918,8	774.269.957,25	63,13%	58,90%	1,28%	14,35%	1,00%	11,32%	829.874.189,69	
8-jun-07	1.309.802.590,5	761.413.798,53	62,42%	58,13%	1,28%	14,36%	1,30%	14,54%	817.629.446,03	37.226.161,38
8-jul-07	1.305.026.174,7	751.728.622,28	61,73%	57,60%	1,27%	14,27%	0,91%	10,40%	805.558.896,20	
8-ago-07	1.300.235.748,2	739.057.358,43	61,04%	56,84%	1,28%	14,28%	1,32%	14,77%	793.647.358,47	
8-sep-07	1.295.431.269,7	732.073.694,96	60,36%	56,51%	1,26%	14,12%	0,58%	6,71%	781.892.857,78	35.736.588,25
8-oct-07	1.290.612.698,1	723.311.440,76	59,68%	56,04%	1,25%	14,02%	0,83%	9,50%	770.293.442,76	
8-nov-07	1.285.779.992,1	713.797.327,86	59,02%	55,51%	1,24%	13,95%	0,94%	10,76%	758.847.185,48	
8-dic-07	1.280.933.110,0	703.726.928,14	58,36%	54,94%	1,24%	13,91%	1,04%	11,77%	747.552.181,12	34.340.676,66
8-ene-08	1.276.097.465,1	692.501.801,57	57,71%	54,27%	1,24%	13,90%	1,22%	13,72%	736.421.237,33	
8-feb-08	1.271.247.635,6	682.597.529,30	57,07%	53,70%	1,24%	13,86%	1,05%	11,94%	725.437.520,03	
8-mar-08	1.266.383.580,0	674.784.360,80	56,43%	53,28%	1,23%	13,77%	0,76%	8,80%	714.599.196,41	32.952.984,72
8-abr-08	1.261.505.256,4	666.887.365,44	55,80%	52,86%	1,22%	13,68%	0,79%	9,06%	703.904.455,68	
8-may-08	1.256.612.623,1	657.598.455,52	55,18%	52,33%	1,21%	13,64%	1,01%	11,46%	693.351.508,80	
8-jun-08	1.251.705.638,1	649.214.906,47	54,56%	51,87%	1,21%	13,57%	0,89%	10,15%	682.938.588,26	31.660.608,15
8-jul-08	1.246.802.962,2	640.879.249,01	53,95%	51,40%	1,20%	13,52%	0,90%	10,24%	672.674.038,37	
8-ago-08	1.241.885.905,1	632.598.643,02	53,35%	50,94%	1,20%	13,46%	0,90%	10,29%	662.545.847,37	
8-sep-08	1.236.954.424,7	628.100.742,93	52,75%	50,78%	1,18%	13,30%	0,32%	3,72%	652.552.313,62	30.386.274,64
8-oct-08	1.232.008.478,6	621.324.955,67	52,17%	50,43%	1,17%	13,21%	0,68%	7,88%	642.691.755,94	
8-nov-08	1.227.048.024,3	612.860.763,31	51,58%	49,95%	1,17%	13,17%	0,96%	10,97%	632.962.513,40	
8-dic-08	1.222.073.019,4	606.876.935,25	51,01%	49,66%	1,16%	13,06%	0,57%	6,67%	623.362.945,05	29.189.368,57
8-ene-09	1.217.102.929,6	597.493.961,35	50,44%	49,09%	1,16%	13,06%	1,14%	12,90%	613.901.269,68	
8-feb-09	1.212.118.260,9	591.367.944,22	49,88%	48,79%	1,15%	12,97%	0,62%	7,17%	604.565.854,63	
8-mar-09	1.207.118.970,4	585.142.273,37	49,32%	48,47%	1,14%	12,88%	0,64%	7,45%	595.355.120,37	28.007.824,69
8-abr-09	1.202.105.015,4	577.748.914,69	48,77%	48,06%	1,14%	12,84%	0,85%	9,75%	586.267.506,35	
8-may-09	1.197.076.352,7	570.507.383,42	48,23%	47,66%	1,13%	12,79%	0,84%	9,61%	577.301.470,87	
8-jun-09	1.192.032.939,4	563.639.568,08	47,69%	47,28%	1,13%	12,73%	0,79%	9,03%	568.455.490,82	26.899.629,55
8-jul-09	1.187.001.678,5	557.414.616,57	47,16%	46,96%	1,12%	12,66%	0,69%	7,92%	559.740.768,27	
8-ago-09	1.181.955.659,2	548.775.204,77	46,63%	46,43%	1,12%	12,66%	1,13%	12,74%	551.142.863,11	
8-sep-09	1.176.894.838,3	542.660.310,28	46,11%	46,11%	1,12%	12,60%	0,69%	7,96%	542.660.310,28	25.795.180,54

DEAL
 MEZZ. DECLINN
 MEZZ. STOPS DECLINN
 VIDA RESIDUAL DESDE

1.500.000.000
 10%
 1%
 8-sep-09

DATE	PRINCIPAL AVAILABLE	SENIOR NOTES	MEZZANIE NOTES	CLASS A PRINCIPAL	AVERAGE LIFE CLASS A	CLASS B PRINCIPAL	AVERAGE LIFE CLASS B
					3,62		3,88
8-ene-04	0	1.455.000.000	45.000.000	0	0	0	0
8-feb-04	0	1.455.000.000	45.000.000	0	0	0	0
8-mar-04	62.070.831	1.455.000.000	45.000.000	62.070.831	-124.762.370.947	0	0
8-abr-04	0	1.392.929.169	45.000.000	0	0	0	0
8-may-04	0	1.392.929.169	45.000.000	0	0	0	0
8-jun-04	59.711.206	1.392.929.169	45.000.000	59.711.206	-114.526.093.147	0	0
8-jul-04	0	1.333.217.963	45.000.000	0	0	0	0
8-ago-04	0	1.333.217.963	45.000.000	0	0	0	0
8-sep-04	57.437.177	1.333.217.963	45.000.000	57.437.177	-104.880.285.969	0	0
8-oct-04	0	1.275.780.785	45.000.000	0	0	0	0
8-nov-04	0	1.275.780.785	45.000.000	0	0	0	0
8-dic-04	55.245.728	1.275.780.785	45.000.000	55.245.728	-95.851.338.493	0	0
8-ene-05	0	1.220.535.057	45.000.000	0	0	0	0
8-feb-05	0	1.220.535.057	45.000.000	0	0	0	0
8-mar-05	53.133.946	1.220.535.057	45.000.000	53.133.946	-87.405.340.489	0	0
8-abr-05	0	1.167.401.111	45.000.000	0	0	0	0
8-may-05	0	1.167.401.111	45.000.000	0	0	0	0
8-jun-05	51.099.017	1.167.401.111	45.000.000	51.099.017	-79.356.774.025	0	0
8-jul-05	0	1.116.302.094	45.000.000	0	0	0	0
8-ago-05	0	1.116.302.094	45.000.000	0	0	0	0
8-sep-05	49.134.806	1.116.302.094	45.000.000	49.134.806	-71.785.951.593	0	0
8-oct-05	0	1.067.167.288	45.000.000	0	0	0	0
8-nov-05	0	1.067.167.288	45.000.000	0	0	0	0
8-dic-05	47.245.734	1.067.167.288	45.000.000	47.245.734	-64.726.655.787	0	0
8-ene-06	0	1.019.921.554	45.000.000	0	0	0	0
8-feb-06	0	1.019.921.554	45.000.000	0	0	0	0
8-mar-06	45.407.714	1.019.921.554	45.000.000	45.407.714	-58.121.873.991	0	0
8-abr-06	0	974.513.840	45.000.000	0	0	0	0
8-may-06	0	974.513.840	45.000.000	0	0	0	0
8-jun-06	43.655.196	974.513.840	45.000.000	43.655.196	-51.862.372.621	0	0
8-jul-06	0	930.858.644	45.000.000	0	0	0	0
8-ago-06	0	930.858.644	45.000.000	0	0	0	0
8-sep-06	41.947.674	930.858.644	45.000.000	41.947.674	-45.974.650.654	0	0
8-oct-06	0	888.910.970	45.000.000	0	0	0	0
8-nov-06	0	888.910.970	45.000.000	0	0	0	0
8-dic-06	40.322.260	888.910.970	45.000.000	40.322.260	-40.523.871.185	0	0
8-ene-07	0	848.588.710	45.000.000	0	0	0	0
8-feb-07	0	848.588.710	45.000.000	0	0	0	0
8-mar-07	38.733.103	848.588.710	45.000.000	38.733.103	-35.440.789.006	0	0
8-abr-07	0	809.855.607	45.000.000	0	0	0	0
8-may-07	0	809.855.607	45.000.000	0	0	0	0
8-jun-07	37.226.161	809.855.607	45.000.000	37.226.161	-30.637.130.812	0	0
8-jul-07	0	772.629.446	45.000.000	0	0	0	0
8-ago-07	0	772.629.446	45.000.000	0	0	0	0
8-sep-07	35.736.588	772.629.446	45.000.000	35.736.588	-26.123.446.010	0	0
8-oct-07	0	736.892.858	45.000.000	0	0	0	0
8-nov-07	0	736.892.858	45.000.000	0	0	0	0
8-dic-07	34.340.677	736.892.858	45.000.000	34.340.677	-21.978.033.060	0	0
8-ene-08	0	702.552.181	45.000.000	0	0	0	0
8-feb-08	0	702.552.181	45.000.000	0	0	0	0
8-mar-08	32.952.985	702.552.181	45.000.000	32.952.985	-18.091.188.611	0	0
8-abr-08	0	669.599.196	45.000.000	0	0	0	0
8-may-08	0	669.599.196	45.000.000	0	0	0	0
8-jun-08	31.660.608	669.599.196	45.000.000	31.660.608	-14.468.897.923	0	0
8-jul-08	0	637.938.588	45.000.000	0	0	0	0
8-ago-08	0	637.938.588	45.000.000	0	0	0	0
8-sep-08	30.386.275	637.938.588	45.000.000	30.386.275	-11.090.990.244	0	0
8-oct-08	0	607.552.314	45.000.000	0	0	0	0
8-nov-08	0	607.552.314	45.000.000	0	0	0	0
8-dic-08	29.189.369	607.552.314	45.000.000	29.189.369	-7.997.886.987	0	0
8-ene-09	0	578.362.945	45.000.000	0	0	0	0
8-feb-09	0	578.362.945	45.000.000	0	0	0	0
8-mar-09	28.007.825	578.362.945	45.000.000	28.007.825	-5.153.439.742	0	0
8-abr-09	0	550.355.120	45.000.000	0	0	0	0
8-may-09	0	550.355.120	45.000.000	0	0	0	0
8-jun-09	26.899.630	550.355.120	45.000.000	26.899.630	-2.474.765.919	0	0

DEAL
 MEZZ. DECLINN
 MEZZ. STOPS DECLINN
 VIDA RESIDUAL DESDE

1.500.000.000
 10%
 1%
 8-sep-09

DATE	PRINCIPAL AVAILABLE	SENIOR NOTES	MEZZANIE NOTES	CLASS A PRINCIPAL	AVERAGE LIFE CLASS A	CLASS B PRINCIPAL	AVERAGE LIFE CLASS B
8-jul-09	1 0	523.455.491	45.000.000	0	0	0	0
8-ago-09	1 0	523.455.491	45.000.000	0	0	0	0
8-sep-09	1 25.795.181	523.455.491	45.000.000	25.795.181	0	0	0
8-oct-09	1 0	497.660.310	45.000.000	0	0	0	0
8-nov-09	1 0	497.660.310	45.000.000	0	0	0	0
8-dic-09	1 24.769.931	497.660.310	45.000.000	24.769.931	2.254.063.715	0	0
8-ene-10	1 0	472.890.379	45.000.000	0	0	0	0
8-feb-10	1 0	472.890.379	45.000.000	0	0	0	0
8-mar-10	1 23.751.582	472.890.379	45.000.000	23.673.290	4.284.865.571	78.291	14.170.691
8-abr-10	1 0	449.217.089	44.921.709	0	0	0	0
8-may-10	1 0	449.217.089	44.921.709	0	0	0	0
8-jun-10	1 22.803.060	449.217.089	44.921.709	20.730.055	5.659.304.977	2.073.005	565.930.498
8-jul-10	1 0	428.487.034	42.848.703	0	0	0	0
8-ago-10	1 0	428.487.034	42.848.703	0	0	0	0
8-sep-10	1 21.843.146	428.487.034	42.848.703	19.857.406	7.247.953.033	1.985.741	724.795.303
8-oct-10	1 0	408.629.628	40.862.963	0	0	0	0
8-nov-10	1 0	408.629.628	40.862.963	0	0	0	0
8-dic-10	1 20.966.820	408.629.628	40.862.963	19.060.746	8.691.699.959	1.906.075	869.169.996
8-ene-11	1 0	389.568.883	38.956.888	0	0	0	0
8-feb-11	1 0	389.568.883	38.956.888	0	0	0	0
8-mar-11	1 20.071.024	389.568.883	38.956.888	18.246.385	9.962.526.373	1.824.639	996.252.637
8-abr-11	1 0	371.322.498	37.132.250	0	0	0	0
8-may-11	1 0	371.322.498	37.132.250	0	0	0	0
8-jun-11	1 19.262.077	371.322.498	37.132.250	17.510.979	11.172.004.839	1.751.098	1.117.200.484
8-jul-11	1 0	353.811.518	35.381.152	0	0	0	0
8-ago-11	1 0	353.811.518	35.381.152	0	0	0	0
8-sep-11	1 18.401.020	353.811.518	35.381.152	16.728.200	12.211.585.784	1.672.820	1.221.158.578
8-oct-11	1 0	337.083.319	33.708.332	0	0	0	0
8-nov-11	1 0	337.083.319	33.708.332	0	0	0	0
8-dic-11	1 17.656.391	337.083.319	33.708.332	16.051.265	13.178.088.272	1.605.126	1.317.808.827
8-ene-12	1 0	321.032.054	32.103.205	0	0	0	0
8-feb-12	1 0	321.032.054	32.103.205	0	0	0	0
8-mar-12	1 16.830.927	321.032.054	32.103.205	15.300.842	13.954.368.254	1.530.084	1.395.436.825
8-abr-12	1 0	305.731.212	30.573.121	0	0	0	0
8-may-12	1 0	305.731.212	30.573.121	0	0	0	0
8-jun-12	1 16.147.518	305.731.212	30.573.121	14.679.562	14.738.280.183	1.467.956	1.473.828.018
8-jul-12	1 0	291.051.650	29.105.165	0	0	0	0
8-ago-12	1 0	291.051.650	29.105.165	0	0	0	0
8-sep-12	1 15.392.083	291.051.650	29.105.165	13.992.803	15.336.112.196	1.399.280	1.533.611.220
8-oct-12	1 0	277.058.847	27.705.885	0	0	0	0
8-nov-12	1 0	277.058.847	27.705.885	0	0	0	0
8-dic-12	1 14.764.830	277.058.847	27.705.885	13.422.573	15.932.593.892	1.342.257	1.593.259.389
8-ene-13	1 0	263.636.274	26.363.627	0	0	0	0
8-feb-13	1 0	263.636.274	26.363.627	0	0	0	0
8-mar-13	1 14.071.949	263.636.274	26.363.627	12.792.681	16.336.253.797	1.279.268	1.633.625.380
8-abr-13	1 0	250.843.593	25.084.359	0	0	0	0
8-may-13	1 0	250.843.593	25.084.359	0	0	0	0
8-jun-13	1 13.496.300	250.843.593	25.084.359	12.269.364	16.796.758.746	1.226.936	1.679.675.875
8-jul-13	1 0	238.574.229	23.857.423	0	0	0	0
8-ago-13	1 0	238.574.229	23.857.423	0	0	0	0
8-sep-13	1 12.882.374	238.574.229	23.857.423	11.711.250	17.110.135.541	1.171.125	1.711.013.554
8-oct-13	1 0	226.862.980	22.686.298	0	0	0	0
8-nov-13	1 0	226.862.980	22.686.298	0	0	0	0
8-dic-13	1 12.352.905	226.862.980	22.686.298	11.229.914	17.428.826.615	1.122.991	1.742.882.662
8-ene-14	1 0	215.633.065	21.563.307	0	0	0	0
8-feb-14	1 0	215.633.065	21.563.307	0	0	0	0
8-mar-14	1 11.799.117	215.633.065	21.563.307	10.726.470	17.612.864.305	1.072.647	1.761.286.431
8-abr-14	1 0	204.906.595	20.490.660	0	0	0	0
8-may-14	1 0	204.906.595	20.490.660	0	0	0	0
8-jun-14	1 11.311.595	204.906.595	20.490.660	5.820.935	10.093.501.912	5.490.660	9.520.803.592
8-jul-14	1 0	199.085.660	15.000.000	0	0	0	0
8-ago-14	1 0	199.085.660	15.000.000	0	0	0	0
8-sep-14	1 10.808.792	199.085.660	15.000.000	10.808.792	19.736.854.926	0	0
8-oct-14	1 0	188.276.867	15.000.000	0	0	0	0
8-nov-14	1 0	188.276.867	15.000.000	0	0	0	0
8-dic-14	1 10.359.585	188.276.867	15.000.000	10.359.585	19.859.324.458	0	0
8-ene-15	1 0	177.917.282	15.000.000	0	0	0	0
8-feb-15	1 0	177.917.282	15.000.000	0	0	0	0
8-mar-15	1 9.887.534	177.917.282	15.000.000	9.887.534	19.844.280.925	0	0
8-abr-15	1 0	168.029.748	15.000.000	0	0	0	0
8-may-15	1 0	168.029.748	15.000.000	0	0	0	0
8-jun-15	1 9.474.238	168.029.748	15.000.000	9.474.238	19.886.426.461	0	0
8-jul-15	1 0	158.555.510	15.000.000	0	0	0	0
8-ago-15	1 0	158.555.510	15.000.000	0	0	0	0
8-sep-15	1 173.555.510	158.555.510	15.000.000	158.555.510	347.395.122.018	15.000.000	32.865.000.000