



F.T.H. HIPOTEBANSA XI

FRANCISCO FORTES CLAVERO

ANALYST

SANTANDER DE TITULIZACION, S.G.F.T, S.A.

CIUDAD GRUPO SANTANDER

28660 BOADILLA DEL MONTE

ffortes@gruposantander.com

Tel: 912893290



NAME OF THE FUND:

F.T.H. HIPOTEBANSA XI

INFORMATION AT:

QUARTER/SEMESTER:

November 15, 2013 - February 17, 2014

YEAR:

2014

Acting on behalf of Santander de Titulización S.G.F.T., S.A. as General Manager:	Signature:
IGNACIO ORTEGA GAVARA - GENERAL MANAGER	

I. DATA OF THE FUND

Constitution Date	November 26, 2002	Paying Agent	BANCO SANTANDER	
Disbursement Date	November 29, 2002	Negotiation Market	AIAF	
Final Date of Redemption	February 15, 2035	Ratings Agencies	MOODY'S ESPAÑA	
			STANDARD & POORS	
Management Company	SANTANDER DE TITULIZACION, S.G.F.T, S.A.	Rating	Initial	Current
Credit Rights 's Seller	BANCO SANTANDER	CLASS A	Aaa/AAA	Baa2/AA-
		CLASS B	A2/A	ÖaaF/BÉ

II. SECURITIES ISSUED CHARGED TO THE FUND: SECURITISATION BONDS

CLASS PRIORITY ISIN CODE	NUM BONDS	NOMINAL			
			Initial	Current	%Act/In
CLASS A ES0338447008	10.408	Nominal per Bond	100.000,00	17.894,91	
		Total Nominal	1.040.800.000,00	186.250.223,28	17,89 %
CLASS B ES0338447016	212	Nominal per Bond	100.000,00	52.712,32	
		Total Nominal	21.200.000,00	11.175.011,84	52,71 %

REDEMPTION AND INTEREST OF THE BONDS					
Current			Next		
Payment Date of the Current Period February 17, 2014			Next Payment Date May 16, 2014		
	Redemption of the Bonds	Gross Interest	Interest Rate	Gross Interest Next Coupon	Net Interest Next Coupon
CLASS A	648,38 €	22,18 €	0,5280 %	23,10 €	18,25 €
CLASS B	1.909,92 €	95,27 €	0,7380 %	95,09 €	75,12 €
Accrued amortisation due not payed	0,00 €				
Scheduled Amortisation	NO				



III. ASSET PURCHASED BY THE FUND: CREDIT RIGHTS

CREDIT RIGHTS	ISSUE DATE	CURRENT DATE
Numbre of CR's	13.082	4.685
CR's Outstanding to be amortised	1.062.000.934,18	197.425.214,43
CR's Outstanding per Loan to be amortised	81.180,32	42.139,85
Interest Rate	4,46 %	1,55 %

PREPAYMENT RATE	CURRENT SITUATION
Monthly Single Rate	4,55 %
Average Monthly Single Rate	J,Í F %
Constant Prepayment Rate from Constitution	9,34 %

CURRENT DELINQUENCY	Up to 1 month	From 1 to 6 months	Greater than 6 months
Debt Due (Principal + Interest)	8.688,54	45.789,28	1.647,54
Debt to be amortised	0,00	0,00	197.377.910,49
Total Debt	8.688,54	45.789,28	197.379.558,03

F.T.H. HIPOTEBANSA XI**QUARTERLY BONDS PAYOUT REPORT**

February 17, 2014

BONDS. PRINCIPAL	
Previous Balance	204.578.477,20 €
Principal Amortised	7.153.242,08 €
Outstanding Balance	197.425.235,12 €
% of Initial Balance	18,59%
Principal accrued and unpaid	0,00 €

INTEREST PAID	
CLASS A	230.849,44 €
CLASS B	20.197,24 €
Interest accrued and unpaid	0,00 €

DATA	
Determination Date	10/02/2014
Payment Date	17/02/2014
Last Payment Date	15/11/2013
Number of Days (Act/360)	94
Reference Interest Rate (%)	0,288%
Next Payment Date	16/05/2014

RESIDUAL LIFE (YEARS)		
	INITIAL	17/02/2014
CLASS A	6,7	2,77
CLASS B	12,8	3

F.T.H. HIPOTEBANSA XI

QUARTERLY COLLATERAL REPORT

February 17, 2014

PRINCIPAL	
Previous Balance	204.578.485,37 €
Principal Amortised	7.153.270,94 €
Outstanding Balance	197.425.214,43 €
Number of Credit Rights	4.685
LTV	31,35%

INTEREST	
Interest received during relevant period	761.868,98 €
Interest accrued during relevant period	732.508,08 €

PRINCIPAL BALANCE IN ARREARS					
	UP to 30 DAYS	30 to 60 DAYS	60 to 90 DAYS	90 to 180 DAYS	> 180 DAYS
Principal Balance in Arrears	7.412,45 €	9.713,80 €	20.526,46 €	8.699,76 €	951,47 €
Interest accrued on Credit Rights in Arrears	1.276,09 €	2.281,18 €	2.361,27 €	2.206,81 €	696,07 €
Outstanding Balance	1.575.050,57 €	1.348.890,62 €	510.116,94 €	442.675,09 €	1.442.189,15 €
Number of Credit Rights	35	23	14	11	84
% of Outstanding Balance	0,80%	0,68%	0,26%	0,22%	0,73%

(1) This report does not include loans in arrears from 1 to 15 days, as it is considered a technical arrear with a high percentage of recovery.

F.T.H. HIPOTEBANSA XI

QUARTERLY COLLATERAL REPORT

February 17, 2014

CONTENTIOUS / JUDICIAL	
Last balance	1.102.294,36 €
Difference in Actual Period	312.528,08 €
Current balance	1.414.822,44 €
Contentious CR's number	85

TRANSITORY PROPERTIES	
Last balance	705.412,57 €
Difference in Actual Period	329,22 €
Current balance	705.741,79 €
Transitory properties CR's number	11

NET LOSS	
Last balance	168.847,79 €
Difference in Actual Period	22.916,61 €
Current balance	191.764,40 €

F.T.H. HIPOTEBANSA XI

QUARTERLY REPORT - ALLOCATION OF CASH

February 17, 2014

TOTAL CASH RECEIVED END OF PERIOD	7.988.696,31 €
CASH RECEIVED - PRINCIPAL	
Amortisation of Credit Rights	7.130.001,99 €
CASH RECEIVED - INTEREST	
Interest received from Credit Rights	761.868,98 €
Interest received under GIC	278,73 €
CONTENTIOUS	6.545,20 €
INCOMES/EXPENSES OF TRANSTORY PROPERTIES	1.372,45 €
RESERVE FUNDS	89.415,88 €
OTHERS	-786,92 €

TREASURY ACCOUNT STATEMENT	5.122.815,18 €
PRINCIPAL RESERVE FUND	
Previous Balance	2.045.784,85 €
Period utilization	-71.532,71 €
Outstanding Balance	1.974.252,14 €
PRINCIPAL RESERVE FUND	
Previous Balance	3.166.446,21 €
Period utilization	-17.883,17 €
Outstanding Balance	3.148.563,04 €
WITHHOLDING TAXES	0,00 €
ISSUE EXPENSES WITHHELD	0,00 €
OTHERS	0,00 €

TOTAL CASH PAID END OF PERIOD	7.988.696,31 €
ORDINARY EXPENSES	18.055,02 €
MANAGEMENT FEE	19.380,00 €
SWAP A COLLECTION	-230.804,84 €
SWAP A PAYMENT	479.137,74 €
SWAP B COLLECTION	-20.197,94 €
SWAP B PAYMENT	28.748,27 €
CLASS A INTEREST	230.849,44 €
CLASS A REDEMPTION	6.748.339,04 €
CLASS B REDEMPTION	404.903,04 €
CLASS B INTEREST	20.197,24 €
SUBORDINATED LOAN A INTEREST	12.816,07 €
SUBORDINATED LOAN B INTEREST	0,00 €
SUBORDINATED LOAN A REDEMPTION	113.703,06 €
SUBORDINATED LOAN B REDEMPTION	0,00 €
ADMINISTRATION FEE	18.000,00 €
VARIABLE FEE	145.570,17 €

F.T.H. HIPOTEBANSA XI

CREDIT ENHANCEMENT AND SUBORDINATED LOAN

February 17, 2014

CREDIT ENHANCEMENT		
CONCEPTS	INITIAL	February 17, 2014
SUBORDINATED ISSUE	2,00 %	5,66%
PRINCIPAL RESERVE FUND	10.620.000,00 € (1,00 %)	1.974.252,14 € 1,00%
SECONDARY RESERVE FUND	5.310.000,00 € (0,50 %)	3.148.563,04 € 1,59%

SUBORDINATED LOANS		
CONCEPTS	INITIAL	February 17, 2014
SUBORDINATED LOAN A		
Total Outstanding Subordinated Loan	17.045.178,00 €	5.124.666,64 €
Interest Rate	3,860 %	0,949%

F.T.H. HIPOTEBANSA XI

TRIGGERS OF THE MODEL

February 17, 2014

RESERVE FUND's TRIGGERS	
IF 1) IS HIGHER THAN 2) RESERVE FUNDS WILL NOT BE REDUCED	
1) 99% PREVIOUS BTA BALANCE	202.532.692,42 €
2) CREDIT RIGHTS OUTSTANDING BALANCE (ARREARS < 90 DAYS) + CR'S REDEMPTION	202.670.352,18 €

RESERVE FUND HAS BEEN REDUCED

BOND's TRIGGERS	
IF 1) IS HIGHER THAN 2) CLASS B IS NOT AMORTISED	
1) CREDIT RIGHTS IN ARREARS OVER 90 DAYS	1.884.864,24 €
2) 4% CREDIT RIGHTS OUTSTANDING BALANCE	7.897.008,58 €

CLASS B IS AMORTIZED

AGREEMENT	COUNTERPARTY	RATING AGENCY	MINIMUM RATING REQUIRED	CURRENT RATING
CUENTA TESORERÍA	BANCO SANTANDER	MOODYS	P-1 c/p	Baa2 l/t P-2 s/t
		S&P	A-1 c/p A l/p	BBB l/t A-2 s/t
SWAP	BANCO SANTANDER	MOODYS	A2 l/p P-1 c/p	Baa2 l/t P-2 s/t
		S&P	A- l/p	BBB l/t A-2 s/t

COUNTERPARTY DOES NOT HAVE THE MINIMUM RATING REQUIRED. TREASURY ACCOUNT HAS BEEN TRANSFERRED TO A COUNTERPARTY WITH MINIMUM RATING REQUIRED. SWAP DEPOSIT HAS BEEN DEPOSITED IN TREASURY ACCOUNT

F.T.H. HIPOTEBANSA XI

DEFINITIONS

February 17, 2014

DETERMINATION DATE Means the date in which the Gestora will carry out the necessary calculations, on behalf of the Fund, for the distribution of the available funds at this date, according with the Order of Priority of Payments.
All the information regarding the Assets (Outstading Balance of the Credit Rights, arrears' tables, transitory properties, stratiphication tables, etc.) are refered to this mentioned date.

NET LOSSES Those loans which the Originator considers that will not recover (net of recoveries).

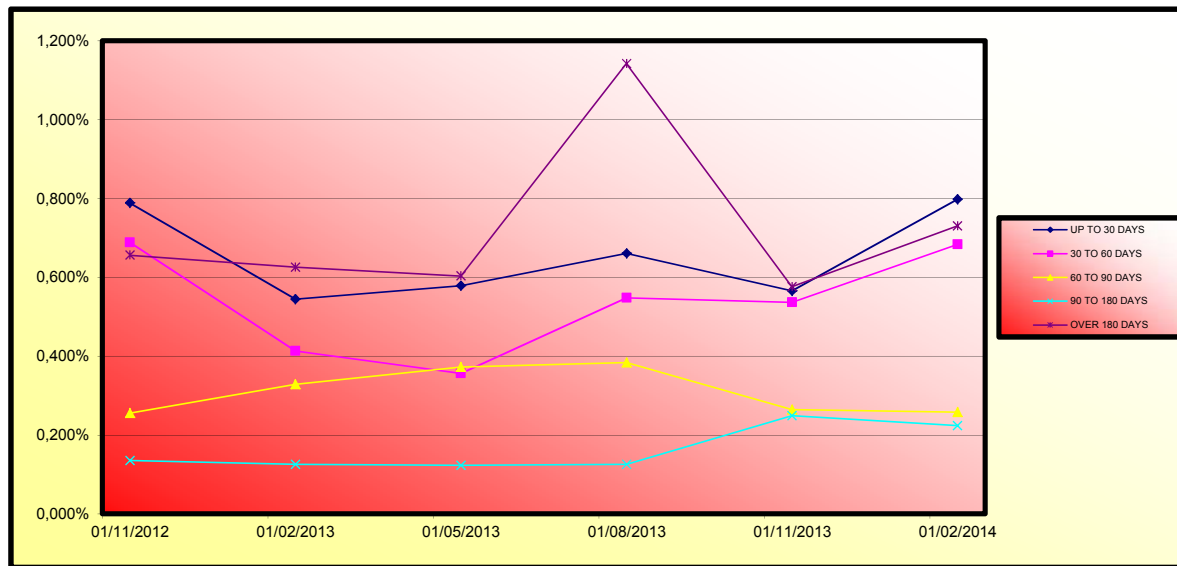
TRANSITORY PROPERTIES Those assets in the balance of the Fund as a consequence of a judicial or non-judicial process.

CONTENTIOUS / JUDICIAL Loans in which the Originator will take legal actions. This amount is included in the bucket > 180 days in arrears.

**FONDO DE TITULIZACIÓN DE ACTIVOS
HIPOTEBANSA 11**

Report date: February 17th 2014

ARREARS PERFORMANCE						
	08/11/2012	08/02/2013	08/05/2013	08/08/2013	08/11/2013	10/02/2014
UP TO 30 DAYS	0,789%	0,545%	0,579%	0,661%	0,566%	0,798%
30 TO 60 DAYS	0,688%	0,413%	0,356%	0,548%	0,536%	0,683%
60 TO 90 DAYS	0,255%	0,329%	0,373%	0,384%	0,264%	0,258%
90 TO 180 DAYS	0,135%	0,126%	0,123%	0,126%	0,249%	0,224%
OVER 180 DAYS	0,656%	0,626%	0,604%	1,142%	0,576%	0,730%



**FONDO DE TITULIZACIÓN DE ACTIVOS
HIPOTEBANSA 11**

LOAN TO VALUE

Report date: February 17th 2014

LTV				
	OUTS, BALANCE	% OUTSTANDING	NUMBER LOANS	% NUM LOANS
0-9,99	6.224.847,98 €	3,15%	639	13,53%
10-19,99	21.248.258,04 €	10,74%	859	18,19%
20-29,99	28.250.415,78 €	14,28%	706	14,95%
30-39,99	39.328.482,23 €	19,87%	789	16,71%
40-49,99	44.588.004,82 €	22,53%	876	18,55%
50-59,99	45.981.571,37 €	23,23%	694	14,70%
60-69,99	11.837.443,22 €	5,98%	154	3,26%
70-79,99	388.061,93 €	0,20%	4	0,08%
80-89,99	51.394,73 €	0,03%	1	0,02%

PREPAGOS - HIPOTEBANSA 11

15-feb-14

Fecha	Balance Teórico	Balance Real	0,81% Vector Prepago	Tasa Prepago Mensual desde Inicio	Tasa Prepago Anualizada desde Inicio	Tasa Prepago Mensual	Tasa Prepago Mensual Anualizada	Outstanding after prepayment	Principal Available
					9,51%				1.062.000.934,18
1	1.062.000.934,18		100,00%	100,00%				1.062.000.934,18	
2	1.059.170.325,97	1.057.044.700,19	99,19%	99,80%	0,20%	2,38%	0,20%	2,38%	1.057.044.700,2
3	1.056.330.372,16	1.048.809.339,04	98,38%	99,29%	0,36%	4,20%	0,51%	5,98%	1.048.809.339,0
4	1.053.479.859,47	1.037.938.978,94	97,58%	98,52%	0,49%	5,77%	0,77%	8,84%	1.037.938.978,9
5	1.050.618.748,66	1.030.003.541,32	96,78%	98,04%	0,49%	5,77%	0,49%	5,77%	1.030.003.541,3
6	1.047.747.000,34	1.020.972.745,34	96,00%	97,44%	0,52%	6,02%	0,61%	7,02%	1.020.972.745,3
7	1.044.864.574,97	1.010.816.263,76	95,21%	96,74%	0,55%	6,41%	0,72%	8,32%	1.010.816.263,8
8	1.041.971.432,87	1.003.440.878,07	94,44%	96,30%	0,54%	6,26%	0,45%	5,31%	1.003.440.878,1
9	1.039.067.682,10	993.186.004,40	93,67%	95,58%	0,56%	6,55%	0,75%	8,59%	993.186.004,4
10	1.036.153.135,33	982.097.638,62	92,91%	94,78%	0,59%	6,89%	0,84%	9,61%	982.097.638,6
11	1.033.227.752,45	975.159.555,45	92,15%	94,38%	0,58%	6,71%	0,43%	4,99%	975.159.555,5
12	1.030.291.493,18	966.431.750,97	91,40%	93,80%	0,58%	6,74%	0,61%	7,11%	966.431.751,0
13	1.027.344.317,10	953.436.130,22	90,66%	92,81%	0,62%	7,19%	1,06%	12,02%	953.436.130,2
14	1.024.386.183,63	944.508.540,63	89,92%	92,20%	0,62%	7,22%	0,65%	7,53%	944.508.540,6
15	1.021.417.800,39	930.185.073,01	89,19%	91,07%	0,67%	7,71%	1,23%	13,80%	930.185.073,0
16	1.018.438.380,94	921.831.922,03	88,46%	90,51%	0,66%	7,66%	0,61%	7,06%	921.831.922,0
17	1.015.447.884,27	907.539.469,11	87,74%	89,37%	0,70%	8,08%	1,26%	14,12%	907.539.469,1
18	1.012.446.269,20	895.504.918,67	87,03%	88,45%	0,72%	8,30%	1,03%	11,72%	895.504.918,7
19	1.009.433.494,41	887.418.518,82	86,32%	87,91%	0,71%	8,23%	0,61%	7,05%	887.418.518,8
20	1.006.409.518,43	876.263.237,75	85,62%	87,07%	0,73%	8,37%	0,96%	10,93%	876.263.237,8
21	1.003.377.044,29	867.495.065,22	84,92%	86,46%	0,72%	8,36%	0,70%	8,10%	867.495.065,2
22	1.000.333.295,73	857.633.882,55	84,23%	85,73%	0,73%	8,42%	0,84%	9,58%	857.633.882,6
23	997.278.230,87	804.308.410,78	83,54%	80,65%	0,97%	11,07%	5,93%	51,98%	804.308.410,8
24	994.211.807,63	795.545.591,13	82,86%	80,02%	0,96%	10,98%	0,78%	9,02%	795.545.591,1
25	991.133.983,79	782.598.464,39	82,19%	78,96%	0,98%	11,14%	1,32%	14,76%	782.598.464,4
26	988.044.717,00	770.977.781,30	81,52%	78,03%	0,99%	11,23%	1,18%	13,24%	770.977.781,3
27	984.948.536,41	754.651.271,17	80,85%	76,62%	1,02%	11,57%	1,81%	19,68%	754.651.271,2
28	981.840.844,62	742.323.934,82	80,20%	75,61%	1,03%	11,69%	1,32%	14,76%	742.323.934,8
29	978.721.598,87	731.960.780,33	79,54%	74,79%	1,03%	11,71%	1,08%	12,24%	731.960.780,3
30	975.590.756,20	718.984.542,85	78,90%	73,70%	1,05%	11,86%	1,46%	16,15%	718.984.542,9
31	972.448.273,51	706.885.021,02	78,25%	72,69%	1,06%	11,98%	1,37%	15,21%	706.885.021,0
32	969.294.107,55	689.240.977,47	77,62%	71,11%	1,09%	12,37%	2,18%	23,23%	689.240.977,5
33	966.131.551,58	678.185.756,46	76,98%	70,20%	1,10%	12,43%	1,28%	14,34%	678.185.756,5
34	962.957.237,72	666.214.919,67	76,36%	69,18%	1,11%	12,54%	1,44%	15,99%	666.214.919,7
35	959.771.122,28	658.165.638,87	75,74%	68,58%	1,10%	12,47%	0,88%	10,07%	658.165.638,9
36	956.573.161,40	648.651.369,26	75,12%	67,81%	1,10%	12,47%	1,12%	12,60%	648.651.369,3
37	953.363.311,04	638.242.081,65	74,51%	66,95%	1,11%	12,52%	1,27%	14,26%	638.242.081,7
38	950.141.527,02	627.954.600,79	73,90%	66,09%	1,11%	12,57%	1,28%	14,31%	627.954.600,8
39	946.909.556,71	616.446.413,36	73,30%	65,10%	1,12%	12,68%	1,50%	16,56%	616.446.413,4
40	943.665.570,52	605.695.422,90	72,70%	64,19%	1,13%	12,75%	1,41%	15,63%	605.695.422,9
41	940.409.523,79	594.529.487,85	72,11%	63,22%	1,14%	12,85%	1,50%	16,62%	594.529.487,9
42	937.141.371,71	584.960.675,74	71,52%	62,42%	1,14%	12,88%	1,27%	14,18%	584.960.675,7
43	933.861.069,29	575.086.536,35	70,94%	61,58%	1,15%	12,94%	1,34%	14,97%	575.086.536,4
44	930.568.571,35	565.932.803,00	70,37%	60,82%	1,15%	12,96%	1,24%	13,94%	565.932.803,0
45	927.272.799,87	558.118.316,87	69,79%	60,19%	1,15%	12,93%	1,03%	11,69%	558.118.316,9
46	923.964.775,39	550.497.713,95	69,22%	59,58%	1,14%	12,90%	1,01%	11,49%	550.497.714,0
47	920.644.452,37	542.920.794,56	68,66%	58,97%	1,14%	12,87%	1,02%	11,58%	542.920.794,6
48	917.311.785,10	536.549.647,93	68,10%	58,49%	1,13%	12,80%	0,81%	9,35%	536.549.647,9
49	913.966.727,70	529.463.736,52	67,55%	57,93%	1,13%	12,76%	0,96%	10,93%	529.463.736,5
50	910.609.234,12	520.643.753,84	67,00%	57,18%	1,13%	12,80%	1,30%	14,57%	520.643.753,8
51	907.242.586,08	512.492.911,52	66,45%	56,49%	1,14%	12,81%	1,20%	13,49%	512.492.911,5
52	903.863.421,61	505.142.636,37	65,91%	55,89%	1,13%	12,79%	1,07%	12,07%	505.142.636,4
53	900.471.694,20	498.780.135,48	65,37%	55,39%	1,13%	12,74%	0,89%	10,15%	498.780.135,5
54	897.067.357,15	490.788.190,07	64,84%	54,71%	1,13%	12,76%	1,23%	13,79%	490.788.190,1
55	893.650.363,60	485.583.354,72	64,31%	54,34%	1,12%	12,68%	0,68%	7,89%	485.583.354,7
56	890.220.666,50	479.137.057,63	63,79%	53,82%	1,12%	12,64%	0,95%	10,79%	479.137.057,6
57	886.836.366,45	471.982.288,71	63,27%	53,22%	1,12%	12,64%	1,12%	12,61%	471.982.288,7
58	883.439.484,37	465.857.195,81	62,76%	52,73%	1,12%	12,60%	0,92%	10,48%	465.857.195,8
59	880.029.973,50	461.998.838,58	62,25%	52,50%	1,10%	12,48%	0,44%	5,20%	461.998.838,6
60	876.607.786,89	458.046.611,10	61,74%	52,25%	1,09%	12,37%	0,47%	5,48%	458.046.611,1
61	873.172.877,43	452.371.234,64	61,24%	51,81%	1,09%	12,32%	0,85%	9,74%	452.371.234,6
62	869.725.197,85	448.356.935,35	60,74%	51,55%	1,08%	12,22%	0,49%	5,78%	448.356.935,4
63	866.268.177,14	439.408.095,80	60,24%	50,72%	1,09%	12,31%	1,60%	17,65%	439.408.095,8
64	862.798.304,13	432.865.132,35	59,75%	50,17%	1,09%	12,31%	1,09%	12,35%	432.865.132,4
65	859.315.531,03	428.713.233,91	59,27%	49,89%	1,08%	12,22%	0,56%	6,49%	428.713.233,9
66	855.819.809,91	423.809.725,84	58,78%	49,52%	1,08%	12,17%	0,74%	8,53%	423.809.725,8
67	852.311.092,64	417.767.295,59	58,31%	49,02%	1,07%	12,16%	1,02%	11,58%	417.767.295,6
68	848.789.330,93	414.119.779,42	57,83%	48,79%	1,07%	12,06%	0,46%	5,40%	414.119.779,4
69	845.278.456,53	408.387.262,86	57,36%	48,31%	1,06%	12,05%	0,97%	11,09%	408.387.262,9
70	841.754.529,66	399.894.858,15	56,89%	47,51%	1,07%	12,14%	1,67%	18,29%	399.894.858,2
71	838.217.501,81	397.104.484,05	56,43%	47,37%	1,06%	12,02%	0,28%	3,29%	397.104.484,1
72	834.667.324,30	392.635.300,03	55,97%	47,04%	1,06%	11,97%	0,70%	8,14%	392.635.300,0
73	831.103.948,24	388.690.866,11	55,52%	46,77%	1,05%	11,90%	0,58%	6,74%	388.690.866,1
74	827.527.324,58	385.413.737,73	55,06%	46,57%	1,04%	11,80%	0,41%	4,86%	385.413.737,7
75	823.941.709,31	379.887.693,57	54,62%	46,11%	1,04%	11,80%	1,00%	11,41%	379.887.693,6
76	820.342.763,79	376.132.280,53	54,17%	45,85%	1,03%	11,73%	0,55%	6,45%	376.132.280,5
77	816.730.438,47	373.184.766,62	53,73%	45,69%	1,03%	11,63%	0,34%	4,06%	373.184.766,6
78	813.104.683,62	370.712.910,40	53,29%	45,59%	1,01%	11,52%	0,22%	2,60%	370.712.910,4
79	809.465.449,34	366.289.849,16	52,86%	45,25%	1,01%	11,48%	0,75%	8,63%	366.289.849,2
80	805.812.685,52	362.559.930,03	52,43%	44,99%	1,01%	11,42%	0,57%	6,63%	362.559.930,0
81	802.186.527,76	357.724.978,07	52,00%	44,59%	1,00%	11,41%	0,89%	10,15%	357.724.978,1
82	798.546.889,06	353.824.448,77	51,58%	44,31%	1,00%	11,36%	0,64%	7,41%	353.824.448,8
83	794.893.719,32	350.570.091,65	51,16%	44,10%	0,99%	11,29%	0,46%	5,43%	350.570.091,7
84	791.226.968,25	347.229.237,07	50,74%	43,88%	0,99%	11,23%	0,49%	5,77%	347.229.237,1
85	787.546.585,37	340.966.922,50	50,33%	43,29%	0,99%	11,27%	1,34%	14,99%	340.966.922,5
86	783.852.520,02	337.271.256,12	49,92%	43,03%	0,99%	11,22%	0,62%	7,17%	337.271.256,1

87	1-ene-10	780.152.853,81	331.682.915,73	49,51%	42,52%	0,99%	11,25%	1,19%	13,39%	331.682.915,7	
88	1-feb-10	776.439.433,47	328.381.940,19	49,11%	42,29%	0,98%	11,19%	0,52%	6,08%	328.381.940,2	12.584.982,31
89	1-mar-10	772.712.207,86	324.299.710,78	48,71%	41,97%	0,98%	11,17%	0,77%	8,82%	324.299.710,8	
90	1-abr-10	768.971.125,68	320.856.666,58	48,31%	41,73%	0,98%	11,12%	0,58%	6,75%	320.856.666,6	
91	1-may-10	765.216.135,42	317.821.724,68	47,92%	41,53%	0,97%	11,06%	0,46%	5,38%	317.821.724,7	10.560.215,51
92	1-jun-10	761.447.185,41	315.309.819,68	47,53%	41,41%	0,96%	10,98%	0,30%	3,53%	315.309.819,7	
93	1-jul-10	757.737.575,21	312.506.764,97	47,14%	41,24%	0,96%	10,91%	0,40%	4,74%	312.506.765,0	
94	1-ago-10	754.014.173,91	307.861.260,43	46,76%	40,83%	0,96%	10,92%	1,00%	11,36%	307.861.260,4	9.960.464,25
95	1-sep-10	750.276.930,25	305.310.872,01	46,38%	40,69%	0,95%	10,84%	0,33%	3,94%	305.310.872,0	
96	1-oct-10	746.525.792,79	302.266.230,38	46,00%	40,49%	0,95%	10,79%	0,50%	5,83%	302.266.230,4	
97	1-nov-10	742.760.709,88	299.713.677,26	45,63%	40,35%	0,94%	10,72%	0,34%	4,03%	299.713.677,3	8.147.583,17
98	1-dic-10	738.981.629,70	296.591.158,42	45,26%	40,14%	0,94%	10,68%	0,54%	6,24%	296.591.158,4	
99	1-ene-11	735.193.927,19	291.262.819,72	44,89%	39,82%	0,94%	10,72%	1,29%	14,43%	291.262.819,7	
100	1-feb-11	731.392.143,34	288.900.230,44	44,52%	39,50%	0,93%	10,65%	0,30%	3,49%	288.900.230,4	10.813.446,82
101	1-mar-11	727.576.225,80	286.264.570,10	44,16%	39,34%	0,93%	10,59%	0,39%	4,61%	286.264.570,1	
102	1-abr-11	723.746.122,06	283.436.064,18	43,80%	39,16%	0,92%	10,54%	0,46%	5,43%	283.436.064,2	
103	1-may-11	719.901.779,38	280.960.059,59	43,44%	39,03%	0,92%	10,48%	0,34%	4,05%	280.960.059,6	7.940.170,85
104	1-jun-11	716.043.144,85	278.312.314,21	43,09%	38,87%	0,91%	10,43%	0,41%	4,79%	278.312.314,2	
105	1-jul-11	712.190.655,82	275.761.660,14	42,74%	38,72%	0,91%	10,37%	0,38%	4,47%	275.761.660,1	
106	1-ago-11	708.323.844,65	273.279.092,90	42,39%	38,58%	0,90%	10,31%	0,36%	4,23%	273.279.092,9	7.680.966,69
107	1-sep-11	704.442.658,13	270.935.369,97	42,05%	38,46%	0,90%	10,25%	0,31%	3,67%	270.935.370,0	
108	1-oct-11	700.547.042,80	268.556.921,92	41,70%	38,34%	0,89%	10,19%	0,33%	3,85%	268.556.921,9	
109	1-nov-11	696.636.945,06	266.425.568,69	41,36%	38,24%	0,89%	10,13%	0,24%	2,80%	266.425.568,7	6.853.524,21
110	1-dic-11	692.712.311,08	263.629.031,32	41,03%	38,06%	0,88%	10,09%	0,49%	5,71%	263.629.031,3	
111	1-ene-12	688.784.629,71	259.676.451,07	40,69%	37,70%	0,88%	10,10%	0,94%	10,69%	259.676.451,1	
112	1-feb-12	684.842.346,75	256.892.369,56	40,36%	37,51%	0,88%	10,06%	0,50%	5,87%	256.892.369,6	9.533.199,13
113	1-mar-12	680.885.407,92	253.949.065,00	40,03%	37,30%	0,88%	10,03%	0,57%	6,64%	253.949.065,0	
114	1-abr-12	676.913.758,75	251.104.281,26	39,71%	37,10%	0,87%	10,00%	0,54%	6,29%	251.104.281,3	
115	1-may-12	672.927.344,57	247.859.348,30	39,38%	36,83%	0,87%	9,98%	0,71%	8,17%	247.859.348,3	9.033.021,26
116	1-jun-12	668.926.110,50	244.993.940,46	39,06%	36,62%	0,87%	9,95%	0,56%	6,57%	244.993.940,5	
117	1-jul-12	665.347.651,79	242.336.402,87	38,75%	36,42%	0,87%	9,92%	0,55%	6,43%	242.336.402,9	
118	1-ago-12	661.755.889,43	239.852.008,79	38,43%	36,24%	0,86%	9,89%	0,49%	5,70%	239.852.008,8	8.007.339,51
119	1-sep-12	658.150.773,97	237.561.527,78	38,12%	36,10%	0,86%	9,84%	0,41%	4,84%	237.561.527,8	
120	1-oct-12	654.532.255,78	235.276.281,90	37,81%	35,95%	0,86%	9,80%	0,41%	4,86%	235.276.281,9	
121	1-nov-12	650.900.285,05	232.665.500,60	37,50%	35,75%	0,85%	9,78%	0,56%	6,49%	232.665.500,6	7.186.508,19
122	1-dic-12	647.254.811,77	229.563.429,83	37,19%	35,47%	0,85%	9,77%	0,78%	8,94%	229.563.429,8	
123	1-ene-13	643.606.678,16	226.412.789,50	36,89%	35,18%	0,85%	9,77%	0,81%	9,34%	226.412.789,5	
124	1-feb-13	639.944.981,93	224.148.004,03	36,59%	35,03%	0,85%	9,73%	0,43%	5,08%	224.148.004,0	8.517.496,57
125	1-mar-13	636.269.672,68	221.948.739,67	36,29%	34,88%	0,85%	9,69%	0,41%	4,80%	221.948.739,7	
126	1-abr-13	632.580.699,82	219.391.546,83	36,00%	34,68%	0,84%	9,67%	0,58%	6,69%	219.391.546,8	
127	1-may-13	628.878.012,55	217.174.140,11	35,70%	34,53%	0,84%	9,63%	0,43%	5,02%	217.174.140,1	6.973.863,92
128	1-jun-13	625.161.559,92	215.049.584,48	35,41%	34,40%	0,84%	9,59%	0,39%	4,58%	215.049.584,5	
129	1-jul-13	621.456.630,52	212.809.646,44	35,13%	34,24%	0,83%	9,56%	0,45%	5,29%	212.809.646,4	
130	1-ago-13	617.737.927,43	210.659.136,59	34,84%	34,10%	0,83%	9,52%	0,41%	4,86%	210.659.136,6	6.506.833,31
131	1-sep-13	614.005.399,43	208.912.559,65	34,56%	34,02%	0,83%	9,47%	0,23%	2,68%	208.912.559,7	
132	1-oct-13	610.258.995,15	206.556.591,52	34,27%	33,85%	0,82%	9,45%	0,52%	6,07%	206.556.591,5	
133	1-nov-13	606.498.663,03	204.578.485,37	34,00%	33,73%	0,82%	9,41%	0,34%	4,05%	204.578.485,4	6.088.821,43
134	1-dic-13	602.724.351,28	202.437.830,58	33,72%	33,59%	0,82%	9,37%	0,43%	5,00%	202.437.830,6	
135	1-ene-14	598.945.359,53	199.455.990,35	33,44%	33,30%	0,82%	9,38%	0,85%	9,75%	199.455.990,4	
136	1-feb-14	595.152.318,81	197.425.214,43	33,17%	33,17%	0,81%	9,34%	0,39%	4,55%	197.425.214,4	7.153.270,94

1.062.000.000,00
 6,00%
 0,75%
 15-feb-14

69285,54

VIDA RESIDUAL DESDE

2,77

3,00

FECHA	Principal disponible para la amortización	SERIE A	SERIE B	SERIE A		SERIE B	
				PRINCIPAL	VIDA MEDIA	PRINCIPAL	VIDA MEDIA
15-dic-02	0,00	1.040.800.000,00	21.200.000,00	0,00	0,00	0,00	0,00
15-ene-03 1	0,00	1.040.800.000,00	21.200.000,00	0,00	0,00	0,00	0,00
15-feb-03 1	24.061.955,24	1.040.800.000,00	21.200.000,00	24.061.955,24	-96.680.936.154,32	0,00	0,00
15-mar-03 1	0,00	1.016.738.044,76	21.200.000,00	0,00	0,00	0,00	0,00
15-abr-03 1	0,00	1.016.738.044,76	21.200.000,00	0,00	0,00	0,00	0,00
15-may-03 1	27.122.715,18	1.016.738.044,76	21.200.000,00	27.122.715,18	-106.565.147.942,22	0,00	0,00
15-jun-03 1	0,00	989.615.329,58	21.200.000,00	0,00	0,00	0,00	0,00
15-jul-03 1	0,00	989.615.329,58	21.200.000,00	0,00	0,00	0,00	0,00
15-ago-03 1	28.718.625,14	989.615.329,58	21.200.000,00	28.718.625,14	-110.193.364.662,18	0,00	0,00
15-sep-03 1	0,00	960.896.704,44	21.200.000,00	0,00	0,00	0,00	0,00
15-oct-03 1	0,00	960.896.704,44	21.200.000,00	0,00	0,00	0,00	0,00
15-nov-03 1	28.661.508,40	960.896.704,44	21.200.000,00	28.661.508,40	-107.337.348.958,00	0,00	0,00
15-dic-03 1	0,00	932.235.196,04	21.200.000,00	0,00	0,00	0,00	0,00
15-ene-04 1	0,00	932.235.196,04	21.200.000,00	0,00	0,00	0,00	0,00
15-feb-04 1	31.604.208,19	932.235.196,04	21.200.000,00	31.604.208,19	-115.450.172.518,07	0,00	0,00
15-mar-04 1	0,00	900.630.987,85	21.200.000,00	0,00	0,00	0,00	0,00
15-abr-04 1	0,00	900.630.987,85	21.200.000,00	0,00	0,00	0,00	0,00
15-may-04 1	34.413.403,21	900.630.987,85	21.200.000,00	34.413.403,21	-122.614.955.637,23	0,00	0,00
15-jun-04 1	0,00	866.217.584,64	21.200.000,00	0,00	0,00	0,00	0,00
15-jul-04 1	0,00	866.217.584,64	21.200.000,00	0,00	0,00	0,00	0,00
15-ago-04 1	29.784.636,27	866.217.584,64	21.200.000,00	29.784.636,27	-103.382.472.493,17	0,00	0,00
15-sep-04 1	0,00	836.432.948,37	21.200.000,00	0,00	0,00	0,00	0,00
15-oct-04 1	0,00	836.432.948,37	21.200.000,00	0,00	0,00	0,00	0,00
15-nov-04 1	75.035.418,16	836.432.948,37	21.200.000,00	75.035.418,16	-253.544.677.962,64	0,00	0,00
15-dic-04 1	0,00	761.397.530,21	21.200.000,00	0,00	0,00	0,00	0,00
15-ene-05 1	0,00	761.397.530,21	21.200.000,00	0,00	0,00	0,00	0,00
15-feb-05 1	40.274.529,57	761.397.530,21	21.200.000,00	40.274.529,57	-132.382.378.696,59	0,00	0,00
15-mar-05 1	0,00	721.123.000,64	21.200.000,00	0,00	0,00	0,00	0,00
15-abr-05 1	0,00	721.123.000,64	21.200.000,00	0,00	0,00	0,00	0,00
15-may-05 1	35.438.913,80	721.123.000,64	21.200.000,00	35.438.913,80	-113.333.646.332,40	0,00	0,00
15-jun-05 1	0,00	685.684.086,84	21.200.000,00	0,00	0,00	0,00	0,00
15-jul-05 1	0,00	685.684.086,84	21.200.000,00	0,00	0,00	0,00	0,00
15-ago-05 1	40.670.101,35	685.684.086,84	21.200.000,00	40.670.101,35	-126.321.334.793,10	0,00	0,00
15-sep-05 1	0,00	645.013.985,49	21.200.000,00	0,00	0,00	0,00	0,00
15-oct-05 1	0,00	645.013.985,49	21.200.000,00	0,00	0,00	0,00	0,00
15-nov-05 1	27.972.838,02	645.013.985,49	21.200.000,00	27.972.838,02	-84.310.133.792,28	0,00	0,00
15-dic-05 1	0,00	617.041.147,47	21.200.000,00	0,00	0,00	0,00	0,00
15-ene-06 1	0,00	617.041.147,47	21.200.000,00	0,00	0,00	0,00	0,00
15-feb-06 1	32.546.658,75	617.041.147,47	21.200.000,00	32.546.658,75	-95.101.336.867,50	0,00	0,00
15-mar-06 1	0,00	584.494.488,72	21.200.000,00	0,00	0,00	0,00	0,00
15-abr-06 1	0,00	584.494.488,72	21.200.000,00	0,00	0,00	0,00	0,00
15-may-06 1	30.608.886,55	584.494.488,72	21.200.000,00	30.608.886,55	-86.714.975.596,15	0,00	0,00
15-jun-06 1	0,00	553.885.602,17	21.200.000,00	0,00	0,00	0,00	0,00
15-jul-06 1	0,00	553.885.602,17	21.200.000,00	0,00	0,00	0,00	0,00
15-ago-06 1	24.588.822,40	553.885.602,17	21.200.000,00	24.588.822,40	-67.397.962.198,40	0,00	0,00
15-sep-06 1	0,00	529.296.779,77	21.200.000,00	0,00	0,00	0,00	0,00
15-oct-06 1	0,00	529.296.779,77	21.200.000,00	0,00	0,00	0,00	0,00
15-nov-06 1	21.033.977,43	529.296.779,77	21.200.000,00	21.033.977,43	-55.719.006.212,07	0,00	0,00
15-dic-06 1	0,00	508.262.802,34	21.200.000,00	0,00	0,00	0,00	0,00
15-ene-07 1	0,00	508.262.802,34	21.200.000,00	0,00	0,00	0,00	0,00
15-feb-07 1	24.321.100,15	508.262.802,34	21.200.000,00	24.321.100,15	-62.189.053.083,55	0,00	0,00
15-mar-07 1	0,00	483.941.702,19	21.200.000,00	0,00	0,00	0,00	0,00
15-abr-07 1	0,00	483.941.702,19	21.200.000,00	0,00	0,00	0,00	0,00
15-may-07 1	19.559.281,65	483.941.702,19	21.200.000,00	19.559.281,65	-48.272.307.112,20	0,00	0,00
15-jun-07 1	0,00	464.382.420,54	21.200.000,00	0,00	0,00	0,00	0,00
15-jul-07 1	0,00	464.382.420,54	21.200.000,00	0,00	0,00	0,00	0,00
15-ago-07 1	19.726.158,91	464.382.420,54	21.200.000,00	19.726.158,91	-46.869.353.570,16	0,00	0,00
15-sep-07 1	0,00	444.656.261,63	21.200.000,00	0,00	0,00	0,00	0,00
15-oct-07 1	0,00	444.656.261,63	21.200.000,00	0,00	0,00	0,00	0,00
15-nov-07 1	13.485.961,17	444.656.261,63	21.200.000,00	13.485.961,17	-30.801.935.312,28	0,00	0,00
15-dic-07 1	0,00	431.170.300,46	21.200.000,00	0,00	0,00	0,00	0,00
15-ene-08 1	0,00	431.170.300,46	21.200.000,00	0,00	0,00	0,00	0,00
15-feb-08 1	19.506.102,29	431.170.300,46	21.200.000,00	19.506.102,29	-42.757.376.219,68	0,00	0,00
15-mar-08 1	0,00	411.664.198,17	21.200.000,00	0,00	0,00	0,00	0,00
15-abr-08 1	0,00	411.664.198,17	21.200.000,00	0,00	0,00	0,00	0,00
15-may-08 1	15.097.836,76	411.664.198,17	21.200.000,00	15.097.836,76	-31.735.652.869,52	0,00	0,00
15-jun-08 1	0,00	396.566.361,41	21.200.000,00	0,00	0,00	0,00	0,00
15-jul-08 1	0,00	396.566.361,41	21.200.000,00	0,00	0,00	0,00	0,00
15-ago-08 1	17.872.437,44	396.566.361,41	21.200.000,00	17.872.437,44	-35.923.599.254,40	0,00	0,00
15-sep-08 1	0,00	378.693.923,97	21.200.000,00	0,00	0,00	0,00	0,00
15-oct-08 1	0,00	378.693.923,97	21.200.000,00	0,00	0,00	0,00	0,00
15-nov-08 1	11.203.992,04	378.693.923,97	21.200.000,00	11.203.992,04	-21.489.256.732,72	0,00	0,00
15-dic-08 1	0,00	367.489.931,93	21.200.000,00	0,00	0,00	0,00	0,00
15-ene-09 1	0,00	367.489.931,93	21.200.000,00	0,00	0,00	0,00	0,00
15-feb-09 1	12.558.585,58	367.489.931,93	21.200.000,00	12.558.585,58	-22.931.977.269,08	0,00	0,00
15-mar-09 1	0,00	354.931.346,35	21.200.000,00	0,00	0,00	0,00	0,00
15-abr-09 1	0,00	354.931.346,35	21.200.000,00	0,00	0,00	0,00	0,00
15-may-09 1	9.842.431,37	354.931.346,35	21.200.000,00	9.375.766,18	-16.285.705.854,99	466.665,19	-810.597.434,70
15-jun-09 1	0,00	345.555.580,17	20.733.334,81	0,00	0,00	0,00	0,00
15-jul-09 1	0,00	345.555.580,17	20.733.334,81	0,00	0,00	0,00	0,00
15-ago-09 1	12.465.400,39	345.555.580,17	20.733.334,81	11.759.811,69	-19.344.890.227,88	705.588,70	-1.160.693.413,67

1.062.000.000,000
 6,00%
 0,75%
 15-feb-14

69285,54

VIDA RESIDUAL DESDE

2,77

3,00

		SERIE A		SERIE B		PRINCIPAL		VIDA	
Principal		SERIE A	SERIE B	PRINCIPAL	VIDA	PRINCIPAL	VIDA	PRINCIPAL	VIDA
15-sep-09	1	0,00	333.795.768,48	20.027.746,11	0,00	0,00	0,00	0,00	0,00
15-oct-09	1	0,00	333.795.768,48	20.027.746,11	0,00	0,00	0,00	0,00	0,00
15-nov-09	1	12.857.526,27	333.795.768,48	20.027.746,11	12.129.741,76	-18.837.488.959,73	727.784,51	-1.130.249.337,58	0,00
15-dic-09	1	0,00	321.666.026,72	19.299.961,60	0,00	0,00	0,00	0,00	0,00
15-ene-10	1	0,00	321.666.026,72	19.299.961,60	0,00	0,00	0,00	0,00	0,00
15-feb-10	1	12.584.982,31	321.666.026,72	19.299.961,60	11.872.624,82	-17.345.904.863,12	712.357,49	-1.040.754.291,79	0,00
15-mar-10	1	0,00	309.793.401,90	18.587.604,11	0,00	0,00	0,00	0,00	0,00
15-abr-10	1	0,00	309.793.401,90	18.587.604,11	0,00	0,00	0,00	0,00	0,00
15-may-10	1	10.560.215,51	309.793.401,90	18.587.604,11	9.962.467,46	-13.668.505.358,23	597.748,05	-820.110.321,49	0,00
15-jun-10	1	0,00	299.830.934,43	17.989.856,07	0,00	0,00	0,00	0,00	0,00
15-jul-10	1	0,00	299.830.934,43	17.989.856,07	0,00	0,00	0,00	0,00	0,00
15-ago-10	1	9.960.464,25	299.830.934,43	17.989.856,07	9.396.664,39	-12.027.730.415,09	563.799,86	-721.663.824,91	0,00
15-sep-10	1	0,00	290.434.270,05	17.426.056,20	0,00	0,00	0,00	0,00	0,00
15-oct-10	1	0,00	290.434.270,05	17.426.056,20	0,00	0,00	0,00	0,00	0,00
15-nov-10	1	8.147.583,17	290.434.270,05	17.426.056,20	7.686.399,22	-9.131.442.269,77	461.183,95	-547.886.536,19	0,00
15-dic-10	1	0,00	282.747.870,83	16.964.872,25	0,00	0,00	0,00	0,00	0,00
15-ene-11	1	0,00	282.747.870,83	16.964.872,25	0,00	0,00	0,00	0,00	0,00
15-feb-11	1	10.813.446,82	282.747.870,83	16.964.872,25	10.201.364,92	-11.180.695.957,28	612.081,90	-670.841.757,44	0,00
15-mar-11	1	0,00	272.546.505,91	16.352.790,35	0,00	0,00	0,00	0,00	0,00
15-abr-11	1	0,00	272.546.505,91	16.352.790,35	0,00	0,00	0,00	0,00	0,00
15-may-11	1	7.940.170,85	272.546.505,91	16.352.790,35	7.490.727,22	-7.543.162.307,50	449.443,63	-452.589.738,45	0,00
15-jun-11	1	0,00	265.055.778,69	15.903.346,72	0,00	0,00	0,00	0,00	0,00
15-jul-11	1	0,00	265.055.778,69	15.903.346,72	0,00	0,00	0,00	0,00	0,00
15-ago-11	1	7.680.966,69	265.055.778,69	15.903.346,72	7.246.194,99	-6.630.268.416,37	434.771,70	-397.816.104,98	0,00
15-sep-11	1	0,00	257.809.583,70	15.468.575,02	0,00	0,00	0,00	0,00	0,00
15-oct-11	1	0,00	257.809.583,70	15.468.575,02	0,00	0,00	0,00	0,00	0,00
15-nov-11	1	6.853.524,21	257.809.583,70	15.468.575,02	6.465.588,88	-5.321.179.646,07	387.935,33	-319.270.778,76	0,00
15-dic-11	1	0,00	251.343.994,82	15.080.639,69	0,00	0,00	0,00	0,00	0,00
15-ene-12	1	0,00	251.343.994,82	15.080.639,69	0,00	0,00	0,00	0,00	0,00
15-feb-12	1	9.533.199,13	251.343.994,82	15.080.639,69	8.993.584,08	-6.574.309.966,07	539.615,05	-394.458.597,96	0,00
15-mar-12	1	0,00	242.350.410,74	14.541.024,64	0,00	0,00	0,00	0,00	0,00
15-abr-12	1	0,00	242.350.410,74	14.541.024,64	0,00	0,00	0,00	0,00	0,00
15-may-12	1	9.033.021,26	242.350.410,74	14.541.024,64	8.521.718,17	-5.462.421.346,85	511.303,09	-327.745.280,81	0,00
15-jun-12	1	0,00	233.828.692,57	14.029.721,55	0,00	0,00	0,00	0,00	0,00
15-jul-12	1	0,00	233.828.692,57	14.029.721,55	0,00	0,00	0,00	0,00	0,00
15-ago-12	1	8.007.339,51	233.828.692,57	14.029.721,55	7.554.093,88	-4.147.197.538,67	453.245,63	-248.831.852,32	0,00
15-sep-12	1	0,00	226.274.598,69	13.576.475,92	0,00	0,00	0,00	0,00	0,00
15-oct-12	1	0,00	226.274.598,69	13.576.475,92	0,00	0,00	0,00	0,00	0,00
15-nov-12	1	7.186.508,19	226.274.598,69	13.576.475,92	6.779.724,71	-3.098.334.191,35	406.783,48	-185.900.051,48	0,00
15-dic-12	1	0,00	219.494.873,98	13.169.692,44	0,00	0,00	0,00	0,00	0,00
15-ene-13	1	0,00	219.494.873,98	13.169.692,44	0,00	0,00	0,00	0,00	0,00
15-feb-13	1	8.517.496,57	219.494.873,98	13.169.692,44	8.035.374,12	-2.932.911.554,76	482.122,45	-175.974.693,29	0,00
15-mar-13	1	0,00	211.459.499,86	12.687.569,99	0,00	0,00	0,00	0,00	0,00
15-abr-13	1	0,00	211.459.499,86	12.687.569,99	0,00	0,00	0,00	0,00	0,00
15-may-13	1	6.973.863,92	211.459.499,86	12.687.569,99	6.579.116,91	-1.815.836.265,96	394.747,01	-108.950.175,96	0,00
15-jun-13	1	0,00	204.880.382,95	12.292.822,98	0,00	0,00	0,00	0,00	0,00
15-jul-13	1	0,00	204.880.382,95	12.292.822,98	0,00	0,00	0,00	0,00	0,00
15-ago-13	1	6.506.833,31	204.880.382,95	12.292.822,98	6.506.833,31	-1.197.257.329,78	0,00	0,00	0,00
15-sep-13	1	0,00	198.373.549,64	12.292.822,98	0,00	0,00	0,00	0,00	0,00
15-oct-13	1	0,00	198.373.549,64	12.292.822,98	0,00	0,00	0,00	0,00	0,00
15-nov-13	1	6.088.821,43	198.373.549,64	12.292.822,98	5.375.859,84	-494.579.105,00	712.961,59	-65.592.466,19	0,00
15-dic-13	1	0,00	192.997.689,80	11.579.861,39	0,00	0,00	0,00	0,00	0,00
15-ene-14	1	0,00	192.997.689,80	11.579.861,39	0,00	0,00	0,00	0,00	0,00
15-feb-14	1	7.153.270,94	192.997.689,80	11.579.861,39	6.748.368,81	0,00	404.902,13	0,00	0,00
15-mar-14	1	0,00	186.249.320,99	11.174.959,26	0,00	0,00	0,00	0,00	0,00
15-abr-14	1	0,00	186.249.320,99	11.174.959,26	0,00	0,00	0,00	0,00	0,00
15-may-14	1	8.492.971,73	186.249.320,99	11.174.959,26	8.012.237,48	713.089.135,74	480.734,25	42.785.348,14	0,00
15-jun-14	1	0,00	178.237.083,51	10.694.225,01	0,00	0,00	0,00	0,00	0,00
15-jul-14	1	0,00	178.237.083,51	10.694.225,01	0,00	0,00	0,00	0,00	0,00
15-ago-14	1	8.063.822,28	178.237.083,51	10.694.225,01	7.607.379,51	1.376.935.690,84	456.442,77	82.616.141,45	0,00
15-sep-14	1	0,00	170.629.704,00	10.237.782,24	0,00	0,00	0,00	0,00	0,00
15-oct-14	1	0,00	170.629.704,00	10.237.782,24	0,00	0,00	0,00	0,00	0,00
15-nov-14	1	7.736.710,33	170.629.704,00	10.237.782,24	7.298.783,33	1.992.567.848,14	437.927,00	119.554.070,89	0,00
15-dic-14	1	0,00	163.330.920,68	9.799.855,24	0,00	0,00	0,00	0,00	0,00
15-ene-15	1	0,00	163.330.920,68	9.799.855,24	0,00	0,00	0,00	0,00	0,00
15-feb-15	1	7.498.970,26	163.330.920,68	9.799.855,24	7.074.500,25	2.582.192.591,18	424.470,01	154.931.555,47	0,00
15-mar-15	1	0,00	156.256.420,43	9.375.385,23	0,00	0,00	0,00	0,00	0,00
15-abr-15	1	0,00	156.256.420,43	9.375.385,23	0,00	0,00	0,00	0,00	0,00
15-may-15	1	7.270.564,82	156.256.420,43	9.375.385,23	6.859.023,41	3.113.996.630,26	411.541,40	186.839.797,82	0,00
15-jun-15	1	0,00	149.397.397,01	8.963.843,82	0,00	0,00	0,00	0,00	0,00
15-jul-15	1	0,00	149.397.397,01	8.963.843,82	0,00	0,00	0,00	0,00	0,00
15-ago-15	1	7.035.302,45	149.397.397,01	8.963.843,82	6.637.077,79	3.623.844.471,10	398.224,67	217.430.668,27	0,00
15-sep-15	1	0,00	142.760.319,23	8.565.619,15	0,00	0,00	0,00	0,00	0,00
15-oct-15	1	0,00	142.760.319,23	8.565.619,15	0,00	0,00	0,00	0,00	0,00
15-nov-15	1	6.814.579,26	142.760.319,23	8.565.619,15	6.428.848,36	4.101.605.251,71	385.730,90	246.096.315,10	0,00
15-dic-15	1	0,00	136.331.470,87	8.179.888,25	0,00	0,00	0,00	0,00	0,00
15-ene-16	1	0,00	136.331.470,87	8.179.888,25	0,00	0,00	0,00	0,00	0,00
15-feb-16	1	6.602.844,95	136.331.470,87	8.179.888,25	6.602.844,95	4.820.076.814,51	0,00	0,00	0,00
15-mar-16	1	0,00	129.728.625,92	8.179.888,25	0,00	0,00	0,00	0,00	0,00
15-abr-16	1	0,00	129.728.625,92	8.179.888,25	0,00	0,00	0,00	0,00	0,00
15-may-16	1	6.399.296,75	129.728.625,92	8.179.888,25	6.399.296,75	5.247.423.332,65	0,00	0,00	0,00
15-jun-16	1	0,00	123.329.329,17	8.179.888,25	0,00	0,00	0,00	0,00	0,00
15-jul-16	1	0,00	123.329.329,17	8.179.888,25	0,00	0,00	0,00	0,00	0,00
15-ago-16	1	6.190.819,39	123.329.329,17	8.179.888,25	6.190.819,39	5.646.027.286,00	0,00	0,00	0,00
15-sep-16	1	0,00	117.138.509,78	8.179.888,25	0,00	0,00	0,00	0,00	0,00

1.062.000.000,000
 6,00%
 0,75%
 15-feb-14

69285,54

VIDA RESIDUAL DESDE

2,77

3,00

	Principal	SERIE A	SERIE B	SERIE A PRINCIPAL	VIDA	SERIE B PRINCIPAL	VIDA
15-oct-16 1	0,00	117.138.509,78	8.179.888,25	0,00	0,00	0,00	0,00
15-nov-16 1	5.994.616,33	117.138.509,78	8.179.888,25	5.994.616,33	6.018.594.799,06	0,00	0,00
15-dic-16 1	0,00	111.143.893,44	8.179.888,25	0,00	0,00	0,00	0,00
15-ene-17 1	0,00	111.143.893,44	8.179.888,25	0,00	0,00	0,00	0,00
15-feb-17 1	5.804.386,80	111.143.893,44	8.179.888,25	5.804.386,80	6.361.607.936,55	0,00	0,00
15-mar-17 1	0,00	105.339.506,64	8.179.888,25	0,00	0,00	0,00	0,00
15-abr-17 1	0,00	105.339.506,64	8.179.888,25	0,00	0,00	0,00	0,00
15-may-17 1	5.622.250,75	105.339.506,64	8.179.888,25	5.622.250,75	6.662.367.136,05	0,00	0,00
15-jun-17 1	0,00	99.717.255,89	8.179.888,25	0,00	0,00	0,00	0,00
15-jul-17 1	0,00	99.717.255,89	8.179.888,25	0,00	0,00	0,00	0,00
15-ago-17 1	4.995.484,01	99.717.255,89	8.179.888,25	4.995.484,01	6.379.233.074,60	0,00	0,00
15-sep-17 1	0,00	94.721.771,89	8.179.888,25	0,00	0,00	0,00	0,00
15-oct-17 1	0,00	94.721.771,89	8.179.888,25	0,00	0,00	0,00	0,00
15-nov-17 1	102.902.594,32	94.721.771,89	8.179.888,25	94.721.771,89	129.674.105.714,74	8.179.888,25	11.198.267.017,19