



FONDO DE TITULIZACIÓN HIPOTECARIA
UCI 6

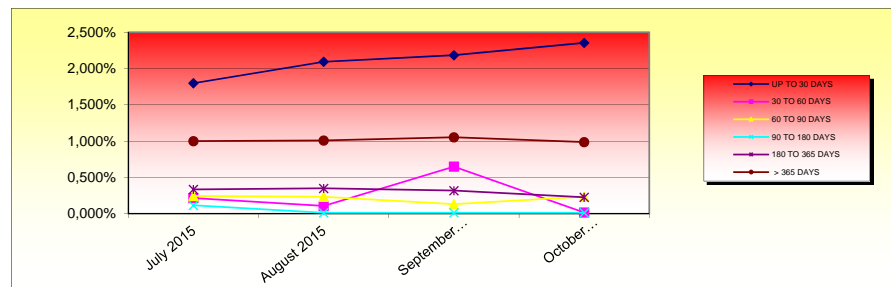
31ST, OCTOBER 2015

| ARREARS FROM CURRENT MONTH | | | | | | |
|----------------------------|---------------|--------------------|--------------------|---------------------|----------------------|--------------------|
| | Up to 30 days | From 30 to 60 days | From 60 to 90 days | From 90 to 180 days | From 180 to 365 days | More than 365 days |
| Principal | 4.360,82 | 93,27 | 1.866,72 | 218,30 | 3.232,38 | 58.799,71 |
| Interest | 668,09 | 22,11 | 254,13 | 26,05 | 552,45 | 14.143,94 |
| Credit Rights | 831.758,24 | 5.866,20 | 82.920,38 | 4.521,19 | 80.054,64 | 348.571,78 |
| number of Credit Rights | 38 | 2 | 3 | 1 | 3 | 28 |
| % Credit Rights | 2,35% | 0,02% | 0,23% | 0,01% | 0,23% | 0,99% |

| ARREARS FROM LAST 12 MONTHS | | | | | | | | |
|-----------------------------|-----------|--------------|-------------|------------------|-----------------|--------------|---------------------|----------|
| DATE | NUM. CR'S | BALANCE CR'S | UNPAID DC'S | PRINCIPAL UNPAID | INTEREST UNPAID | TOTAL UNPAID | BALANCE CR'S UNPAID | % UNPAID |
| 2015/11/30 | 2.342 | 39.852.071 | 94 | 79.429 | 20.200 | 99.629 | 1.746.945 | 4,38% |
| 2014/12/31 | 2.335 | 39.310.879 | 79 | 71.186 | 19.435 | 90.621 | 1.430.564 | 3,64% |
| 2015/01/31 | 2.332 | 38.922.241 | 77 | 73.809 | 19.997 | 93.806 | 1.369.645 | 3,52% |
| 2015/02/28 | 2.327 | 38.540.595 | 90 | 77.237 | 20.601 | 97.838 | 1.627.272 | 4,22% |
| 2015/03/31 | 2.318 | 38.151.880 | 81 | 78.284 | 20.274 | 98.558 | 1.463.358 | 3,84% |
| 2015/04/30 | 2.312 | 37.789.315 | 73 | 77.255 | 19.904 | 97.159 | 1.342.288 | 3,55% |
| 2015/05/31 | 2.312 | 37.424.840 | 89 | 79.996 | 20.532 | 100.528 | 1.564.631 | 4,18% |
| 2015/06/30 | 2.303 | 36.982.258 | 82 | 72.754 | 16.872 | 89.625 | 1.385.580 | 3,75% |
| 2015/07/31 | 2.295 | 36.583.167 | 73 | 70.713 | 16.607 | 87.320 | 1.355.755 | 3,71% |
| 2015/08/31 | 2.284 | 36.213.135 | 82 | 71.933 | 16.441 | 88.374 | 1.377.054 | 3,80% |
| 2015/09/30 | 2.278 | 35.797.433 | 86 | 74.387 | 16.754 | 91.141 | 1.556.251 | 4,35% |
| 2015/10/31 | 2.263 | 35.353.507 | 75 | 68.571 | 15.667 | 84.238 | 1.353.692 | 3,83% |

| ARREARS FROM L.T.V. | | | | | | |
|-------------------------|---------------|--------------------|--------------------|---------------------|----------------------|--------------------|
| | Up to 30 days | From 30 to 60 days | From 60 to 90 days | From 90 to 180 days | From 180 to 365 days | More than 365 days |
| Principal | 3.980,36 | 0,00 | 1.866,72 | 218,30 | 3.232,38 | 41.289,59 |
| Interest | 612,49 | 0,00 | 254,13 | 26,05 | 552,45 | 8.804,37 |
| Credit Rights | 775.339,44 | 0,00 | 82.920,38 | 4.521,19 | 80.054,64 | 231.757,01 |
| number of Credit Rights | 24 | 0 | 3 | 1 | 3 | 9 |
| % Credit Rights | 2,19% | 0,00% | 0,23% | 0,01% | 0,23% | 0,66% |
| L.T.V. | 38,00% | 0,00% | 32,00% | 6,00% | 25,00% | 41,00% |

| ARREARS PERFORMANCE | | | | |
|---------------------|-----------|-------------|----------------|--------------|
| | July 2015 | August 2015 | September 2015 | October 2015 |
| UP TO 30 DAYS | 1,797% | 2,094% | 2,184% | 2,353% |
| 30 TO 60 DAYS | 0,215% | 0,106% | 0,650% | 0,017% |
| 60 TO 90 DAYS | 0,245% | 0,232% | 0,131% | 0,235% |
| 90 TO 180 DAYS | 0,115% | 0,013% | 0,013% | 0,013% |
| 180 TO 365 DAYS | 0,334% | 0,348% | 0,318% | 0,226% |
| > 365 DAYS | 1,000% | 1,009% | 1,052% | 0,986% |



| TRANSITORY PROPERTIES | |
|----------------------------------|-----------|
| Cumulative Transitory Properties | 12.890,30 |

| POOL'S LOSSES | |
|----------------|--------------|
| Current amount | 229.961,42 € |