



UCI 18

JUAN MANUEL GARCIA ABARQUERO
ANALYST
SANTANDER DE TITULIZACION, S.G.F.T, S.A.
GRAN VIA DE HORTALEZA, 3
28033 MADRID
jumgarcia@gruposantander.com
Tel: 912893847



NAME OF THE FUND:

FONDO DE TITULIZACIÓN HIPOTECARIA: UCI 18

INFORMATION AT:

QUARTER/SEMESTER

09 16 2015 - 12 16 2015

YEAR:

2015

Acting on behalf of Santander de Titulización S.G.F.T., S.A. as General Manager:	Signature:
Ignacio Ortega Gavara-Director General	

I. DATA OF THE FUND

Constitution Date	February 27th, 2008	Paying Agency	BANCO SANTANDER	
Disbursement Date	February 29th, 2008	Negotiation Market	AIAF	
Final Date of Redemption	December 16th, 2050	Rating Agencies	S&P	
Gestora	Santander de Titulización	Rating	Initial	Current
Credit Rights's Seller	Unión de Créditos Inmobiliarios	Series A	AAA	B-
		Series B	A	CCC+
		Series C	BBB	CCC-
		Series D	CCC-	D

II. SECURITIES ISSUED CHARGED TO THE FUND: SECURITISATION BONDS

SERIES PRIORITY OF PAYMENT (ISIN CODE)	NUMBER OF BONDS	NOMINAL			
			INITIAL	CURRENT	%Curr/In
Series A1 ES0337986006	16.405	Nominal per Bond	100.000,00	46.491,76	46,49%
		Total Nominal	1.640.500.000,00	762.697.322,80	
Series B ES0337986014	383	Nominal per Bond	100.000,00	100.000,00	100,00%
		Total Nominal	38.300.000,00	38.300.000,00	
Series C ES0337986022	212	Nominal per Bond	100.000,00	100.000,00	100,00%
		Total Nominal	21.200.000,00	21.200.000,00	
Series D ES0337986030	230	Nominal per Bond	100.000,00	100.000,00	100,00%
		Total Nominal	23.000.000,00	23.000.000,00	

REDEMPTION AND INTEREST OF THE BONDS					
Current			Next		
Payment Date of the Current Period December 16th, 2015			Next Payment Date March 16th, 2016		
	Redemption of the Bonds	Gross Interest	Interest Rate	Gross Interest in Next Payment Date	Net Interest in Next Payment Date
Series A	821,33	33,73	0,191%	22,45	18,07
Series B	0,00	142,06	0,471%	119,06	95,84
Series C	0,00	293,73	1,071%	270,73	217,94
Series D	0,00	495,95	1,871%	472,95	380,72
Accrued amortisation due not payed	0,00 €				
Scheduled Amortisation	NO				



NAME OF THE FUND: FONDO DE TITULIZACIÓN HIPOTECARIA: UCI 18

INFORMATION AT: QUARTER/SEMESTER 09 16 2015 - 12 16 2015 YEAR: 2015

III. ASSETS PURCHASED BY THE FUND: CREDIT RIGHTS

CREDIT RIGHTS	ISSUE DATE	CURRENT DATE
Number of CR's	9.111	5.630
Principal Outstanding	1.700.000.358,58	869.430.973,36
Principal Outstanding per Loan	186.587,68	154.428,24
Interest Rate	5,66%	2,15%

PREPAYMENT RATE	CURRENT DATE
Monthly Single Rate	7,58%
Average 12 Month Single Rate	5,27%
Prepayment Rate from Constitution	7,32%

CURRENT DELINQUENCY	Up to 1 month	From 1 to 6 months	Greater than 6 months
Debt Due (Principal + Interest)	61.497,30	179.235,61	7.113.432,22
Debt to be amortised			866.367.766,18
Total Debt	61.497,30	179.235,61	873.481.198,40

UCI 18

QUARTERLY BONDS PAYOUT REPORT

December 16, 2015

BONDS. PRINCIPAL	
Previous Balance	858.671.241,45 €
Principal Amortised	13.473.918,65 €
Outstanding Balance	845.197.322,80 €
% of Initial Balance	49,05%
Principal accrued and unpaid	0,00 €

DATA	
Pool Cut-off Date	December 9, 2015
Payment Date	December 16, 2015
Last Payment Date	September 16, 2015
Number of Days (Act/360)	91
Reference Interest Rate (%)	-0,129%
Next Payment Date	March 16, 2016

INTEREST PAID	
CLASS A	553.340,65 €
CLASS B	54.408,98 €
CLASS C	62.270,76 €
CLASS D	114.068,50 €
Interest accrued and unpaid	0,00 €

RESIDUAL LIFE (YEARS)		
	INITIAL	December 16, 2015
CLASS A	5,06	7,01
CLASS B	8,44	14,51
CLASS C	8,46	14,51
CLASS D	8,55	14,51

UCI 18

QUARTERLY COLLATERAL REPORT

December 16, 2015

PRINCIPAL	
Previous Balance	881.847.285,50 €
Principal Amortised	12.416.312,14 €
Outstanding Balance	869.430.973,36 €
Number of Credit Rights	5.630
LTV	53,13%

INTEREST	
Interest received during relevant period	4.183.889,83 €
Interest accrued during relevant period	5.687.116,99 €

PRINCIPAL BALANCE IN ARREARS					
	UP to 30 DAYS	30 to 60 DAYS	60 to 90 DAYS	90 to 180 DAYS	MORE 180 DAYS
Principal Balance in Arrears	29.603,93 €	24.255,31 €	35.419,00 €	44.794,88 €	2.929.134,06 €
Interest accrued on Credit Rights in Arrears	31.893,37 €	28.456,05 €	597,54 €	45.712,83 €	4.184.298,16 €
Outstanding Balance	22.804.046,30 €	8.708.277,26 €	4.336.132,88 €	5.635.732,64 €	32.793.989,30 €
Number of Credit Rights	136	53	26	31	279
% of Outstanding Balance	2,62%	1,00%	0,50%	0,65%	3,77%

WRITE OFF	
Cumulative WRITE OFF as of previous balance	46.176.114,78 €
Difference in Actual Period	1.057.535,36 €
Cumulative WRITE OFF up to date	47.233.650,14 €

UCI 18

QUARTERLY COLLATERAL REPORT

December 16, 2015

TRANSITORY PROPERTIES	
Last balance	7.784.130,65 €
Difference in Actual Period	397.063,11 €
Current balance	8.181.193,76 €
Number of Transitory Properties	105

NET LOSSES	
Last balance	20.137.408,44 €
Difference in Actual Period	699.401,60 €
Current balance	20.836.810,04 €

UCI 18

QUARTERLY REPORT - ALLOCATION OF CASH

December 16, 2015

TOTAL CASH RECEIVED END OF PERIOD	15.421.188,91 €
CASH RECEIVED - PRINCIPAL	
Amortisation of Credit Rights	10.706.435,15 €
CASH RECEIVED - INTEREST	
Interest received from Credit Rights	4.183.889,83 €
Interest received under GIC	0,00 €
REDEMPTION FEES	4.647,17 €
INCOMES/EXPENSES OF TRANSTORY PROPERTIES	526.216,76 €
OTHER	0,00 €

TREASURY ACCOUNT STATEMENT	23.000.000,00 €
PRINCIPAL RESERVE FUND	
Previous Balance	23.000.000,00 €
Period utilization	0,00 €
Outstanding Balance	23.000.000,00 €
WITHHOLDING TAXES	0,00 €
ISSUE EXPENSES WITHHELD	0,00 €
OTHERS	0,00 €

TOTAL CASH PAID END OF PERIOD	15.421.188,91 €
Ordinary Expenses	181,50 €
Fee management	37.500,00 €
Swap Collection	(9.033,50) €
Swap Payment	335.828,37 €
Interest paid to Class A Bondholders	553.340,65 €
Interest paid to Class B Bondholders	54.408,98 €
Interest paid to Class C Bondholders	62.270,76 €
Principal withholding A	13.473.918,65 €
Principal withholding B	0,00 €
Principal withholding C	0,00 €
Interest deferred Class B Bondholders	0,00 €
Interest deferred Class C Bondholders	0,00 €
Interest paid to Class D Bondholders	114.068,50 €
Principal withholding D	0,00 €
Swap Termination Payment	0,00 €
Interest paid to Subordinated Loan (BS)	0,00 €
Interest paid to Subordinated Loan (UCB)	0,00 €
Repayment of Subordinated Loan (BS)	0,00 €
Repayment of Subordinated Loan (UCB)	0,00 €
Fixed Administration Fee	6.000,00 €
Variable Fee	792.705,00 €
Replacement of Reserve Fund	0,00 €

UCI 18

CREDIT ENHANCEMENT AND SUBORDINATED LOAN

December 16, 2015

CREDIT ENHANCEMENT

CONCEPTS	INITIAL	December 16, 2015
SUBORDINATED ISSUE	3,50%	7,24%
PRINCIPAL RESERVE FUND	23.000.000,00 € (1,35%)	23.000.000,00 (2,80%)

SUBORDINATED LOANS

CONCEPTS	INITIAL	December 16, 2015
SUBORDINATED LOAN SANTANDER		
Total Outstanding Subordinated Loan	1.250.000,00 €	- €
Interest Rate	6,730%	-
SUBORDINATED LOAN UCB		
Total Outstanding Subordinated Loan	1.250.000,00 €	- €
Interest Rate	6,730%	-

UCI 18

TRIGGERS OF THE MODEL

December 16, 2015

RESERVE FUND's TRIGGERS

1. GENERAL RULE	
1.a) LOANS IN ARREARS > 90 DAYS < 1,25% LOANS PRINCIPAL OUTSTANDING IF 1.a.1), 1.a.2) and 1.a.3), R.F. SHALL BE 2,70% LOANS PRINCIPAL OUTSTANDING WITH A FLOOR OF 6.800.000€	NO
1.a.1) R.F. ≥ 2,70% LOANS OUTSTANDING PRINCIPAL	(2,65%) NO
1.a.2) PAYMENT DATE ≥ 16.06.2011	YES
2. SPECIAL RULE	
2.a) LOANS IN ARREARS > 90 DAYS BETWEEN 1,25% and 1,75% LOANS PPAL OUTSTANDING R.F. SHALL BE THE LOWER OF:	9,85% (NO)
INITIAL R.F.	23.000.000,00 €
THE GREATER OF:	23.474.636,28 €
2.a.1) 2,70% LOANS OUTSTANDING PRINCIPAL	23.474.636,28 €
2.a.2) 0,70% INICIAL OUTSTANDING SERIES A, B and C	11.900.000,00 €
2.b) LOANS IN ARREARS > 90 DAYS > 1,75% LOANS PRINCIPAL OUTSTANDING R.F. SHALL BE THE LOWER OF:	9,85% (YES)
INITIAL R.F.	23.000.000,00 €
THE GREATER OF:	23.474.636,28 €
2.b.1) 2,70% LOANS OUTSTANDING PRINCIPAL	23.474.636,28 €
2.b.2) 0,80% INICIAL OUTSTANDING SERIES A, B and C	13.600.000,00 €
3. BOTH FOR 1 AND 2, NEITHER 3.a), 3.b) NOR 3.c) SHALL OCCUR	
3.a) AMORTISATION DEFICIT >0	NO
3.b) LOANS OUTSTANDING BALANCE <10% LOANS INITIAL OUTSTANDING BALANCE	NO
3.c) WAIR ¹ DC's < WAIR1 SERIES A, B, C and D + 0,20%	NO

¹ WAIR: WEIGHTED AVERAGE INTEREST RATE

AT LEAST ONE CASH RESERVE TRIGGER HAS BEEN BREACHED, SO THE RESERVE FUND REQUIRED LEVEL WILL NOT BE LOWERED

BOND's TRIGGERS

1. AMORTISATION OF SERIES A,B and C PRORRATA IF:	
SERIES B:	
SERIES B ≥ 4,50% OF SERIES A, B and C	4,66%
SERIES C:	
SERIES C ≥ 2,50% OF SERIES A, B and C	2,58%
2. SERIES A, B and C SHALL AMORTISE PRORRATA IF NON OF THE FOLLOWING HAPPEN:	
2.1 CR's IN ARREARS > 90 DAYS AT POOL CUT-OFF DATE ≥ 2,50% OUTSTANDING CR	(9,85%) YES
2.2 AMORTISATION DEFICIT > 100% SERIES D BONDS	NO
2.3 RF AVAILABLE < RF REQUIRED	NO
2.4 OUTSTANDING CR (EXCLUDED WRITE-OFF LOANS) < 10% INITIAL OUTSTANDING CR	NO

SOME TRIGGERS OF NON AMORTISATION IN POINT 2. HAVE BEEN BREACHED, SO NEITHER SERIES B NOR C WILL AMORTISED

BONDS INTEREST DEFERRAL TRIGGERS

1. SERIES B WILL DEFER INTEREST PAYMENT FROM 4^o TO 7^o PLACE IF:	
Accrued Default Balance > 6,12% o/ INITIAL CR	THERE IS NO DEFERRAL
Accrued Default Balance	64.429.871,18 €
6,12% x INITIAL OUTSTANDING OF LOANS (CR)	104.040.021,95 €
2. SERIES C WILL DEFER INTEREST PAYMENT FROM 5^o TO 8^o PLACE IF:	
Accrued Default Balance > 4,09% o/ INITIAL CR	THERE IS NO DEFERRAL
Accrued Default Balance	64.429.871,18 €
4,09% x INITIAL OUTSTANDING OF LOANS (CR)	69.530.014,67 €

BONDS INTEREST DEFERRAL FOR SERIES B HAVE NOT BEEN BREACHED, SO SERIES B WILL NOT DEFER INTEREST PAYMENT

BONDS INTEREST DEFERRAL FOR SERIES C HAVE NOT BEEN BREACHED, SO SERIES C WILL NOT DEFER INTEREST PAYMENT

UCI 18

LOAN TO VALUE RATIO December 16, 2015

LOAN TO VALUE STATISTICAL INFORMATION				
Interval(%)	Ppal Outstanding	%	loans	%
0,00% - 10,00%	3.112,56 €	0,36%	139	2,47%
10,01% - 20,00%	11.106,11 €	1,28%	266	4,72%
20,01% - 30,00%	30.138,82 €	3,47%	414	7,35%
30,01% - 40,00%	70.916,88 €	8,16%	637	11,31%
40,01% - 50,00%	134.510,54 €	15,47%	877	15,58%
50,01% - 60,00%	176.773,57 €	20,33%	1.034	18,37%
60,01% - 70,00%	190.509,71 €	21,91%	1.011	17,96%
70,01% - 80,00%	182.204,04 €	20,96%	931	16,54%
80,01% - 90,00%	59.196,08 €	6,81%	278	4,94%
90,01% - > 100%	10.962,66 €	1,26%	43	0,76%
rest of loans	- €	0,00%	0	0,00%
	869.430.973,36 €	100,00%	5.630	100,00%
Maximum	144,79%			
Minimum	0,00%			
Average	53,13%			

UCI 18

DEFINITIONS

December 16, 2015

POOL CUT-OFF DATE Means the date in which the Gestora will carry out the necessary calculations, on behalf of the Fund, for the distribution of the available funds at this date, according with the Order of Priority of Payments.

All the information regarding the Assets (Outstanding Balance of the Credit Rights, arrears' tables, transitory properties, stratification tables, etc.) are referred to this mentioned date.

WRITE OFF Those loans that at a given date are unpaid for a period equal or higher to 12 or 18 months (according to Prospectus) of arrears in due payments.

NET LOSSES Those loans which the Originator considers that will not recover (net of recoveries).

ACCRUED DEFAULT BALANCE: Balance of the Loans which have outstanding instalments for longer than 18 months, or which have begun the process of execution of guarantees (if this process occurs previous to the eighteen 18 months from the first failure to pay), discounting the recovered amounts.

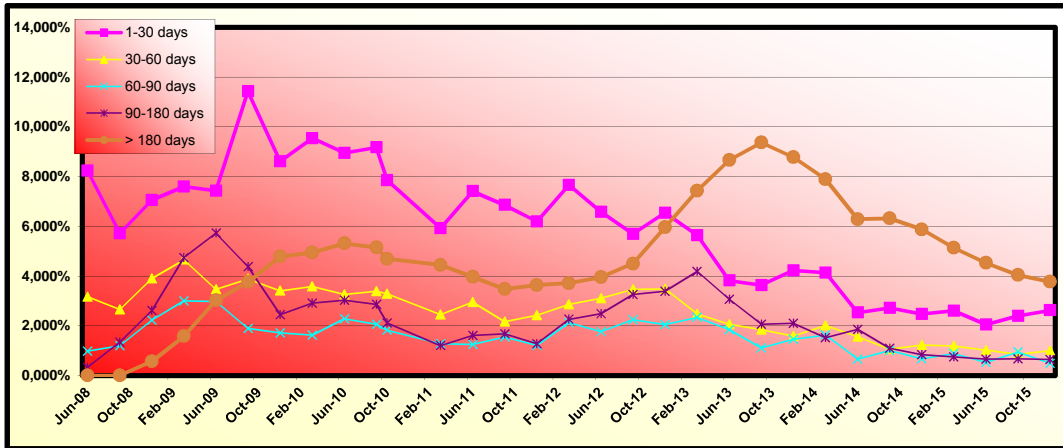
TRANSITORY PROPERTIES Those assets in the balance of the Fund as a consequence of a judicial or non-judicial process.

FONDO DE TITULIZACIÓN DE ACTIVOS UCI 18

QUARTERLY SECURITISED ASSETS REPORT

December 16th, 2015

Date	Dec-14	mar-15	jun-15	sep-15	dic-15
15-30 days	2,473%	2,606%	2,050%	2,397%	2,623%
30-60 days	1,232%	1,193%	1,021%	0,856%	1,002%
60-90 days	0,675%	0,886%	0,526%	0,949%	0,499%
90-180 days	0,839%	0,754%	0,665%	0,668%	0,648%
> 180 days	5,874%	5,139%	4,527%	4,040%	3,772%



FLows FOR EVERY BOND WITHOUT WITHHOLDING FOR THE HOLDER
(AMOUNTS IN EUR)
CPR = 7,32%

Payment Date	Series A Bonds			Series B Bonds			Series C Bonds			Series D Bonds		
	Principal Repayment	Gross Interest	Total Flow	Principal Repayment	Gross Interest	Total Flow	Principal Repayment	Gross Interest	Total Flow	Principal Repayment	Gross Interest	Total Flow
TOTALS:	762.697.322,80	18.549.064,45	781.246.387,25	38.300.000,00	3.484.347,22	41.784.347,22	21.200.000,00	3.774.292,34	24.974.292,34	23.000.000,00	6.764.515,51	29.764.515,51
16-dic-15												
16-mar-16	16.995.525,78	659.827,22	17.655.353,00	0,00	59.870,77	59.870,77	0,00	64.852,83	64.852,83	0,00	116.233,18	116.233,18
16-jun-16	19.576.674,50	652.213,26	20.228.887,77	0,00	60.528,69	60.528,69	0,00	65.565,50	65.565,50	0,00	117.510,47	117.510,47
16-sep-16	19.175.873,08	635.090,92	19.810.963,99	0,00	60.528,69	60.528,69	0,00	65.565,50	65.565,50	0,00	117.510,47	117.510,47
16-dic-16	18.629.977,65	611.598,26	19.241.575,91	0,00	59.870,77	59.870,77	0,00	64.852,83	64.852,83	0,00	116.233,18	116.233,18
16-mar-17	18.199.252,81	588.937,28	18.788.190,09	0,00	59.212,85	59.212,85	0,00	64.140,16	64.140,16	0,00	114.955,89	114.955,89
16-jun-17	18.147.402,87	586.107,16	18.733.510,03	0,00	60.528,69	60.528,69	0,00	65.565,50	65.565,50	0,00	117.510,47	117.510,47
16-sep-17	17.732.114,92	570.234,90	18.302.349,82	0,00	60.528,69	60.528,69	0,00	65.565,50	65.565,50	0,00	117.510,47	117.510,47
16-dic-17	17.207.330,84	548.696,23	17.756.027,06	0,00	59.870,77	59.870,77	0,00	64.852,83	64.852,83	0,00	116.233,18	116.233,18
16-mar-18	16.690.648,66	527.943,72	17.218.592,38	0,00	59.212,85	59.212,85	0,00	64.140,16	64.140,16	0,00	114.955,89	114.955,89
18-jun-18	16.611.327,43	525.077,66	17.136.405,09	0,00	60.528,69	60.528,69	0,00	65.565,50	65.565,50	0,00	117.510,47	117.510,47
17-sep-18	16.266.663,43	510.548,89	16.777.212,32	0,00	60.528,69	60.528,69	0,00	65.565,50	65.565,50	0,00	117.510,47	117.510,47
17-dic-18	15.804.159,93	490.926,78	16.295.086,71	0,00	59.870,77	59.870,77	0,00	64.852,83	64.852,83	0,00	116.233,18	116.233,18
18-mar-19	15.349.291,29	472.009,68	15.821.300,98	0,00	59.212,85	59.212,85	0,00	64.140,16	64.140,16	0,00	114.955,89	114.955,89
17-jun-19	15.279.938,28	469.073,83	15.749.012,12	0,00	60.528,69	60.528,69	0,00	65.565,50	65.565,50	0,00	117.510,47	117.510,47
16-sep-19	14.957.822,48	455.709,54	15.413.532,02	0,00	60.528,69	60.528,69	0,00	65.565,50	65.565,50	0,00	117.510,47	117.510,47
16-dic-19	14.531.689,37	437.815,81	14.969.505,18	0,00	59.870,77	59.870,77	0,00	64.852,83	64.852,83	0,00	116.233,18	116.233,18
16-mar-20	14.228.989,66	425.244,11	14.654.233,77	0,00	59.870,77	59.870,77	0,00	64.852,83	64.852,83	0,00	116.233,18	116.233,18
16-jun-20	14.046.796,23	417.472,02	14.464.268,25	0,00	60.528,69	60.528,69	0,00	65.565,50	65.565,50	0,00	117.510,47	117.510,47
16-sep-20	13.754.683,50	405.186,27	14.159.869,77	0,00	60.528,69	60.528,69	0,00	65.565,50	65.565,50	0,00	117.510,47	117.510,47
16-dic-20	13.366.469,33	388.882,57	13.755.351,91	0,00	59.870,77	59.870,77	0,00	64.852,83	64.852,83	0,00	116.233,18	116.233,18
16-mar-21	12.986.255,22	373.172,57	13.359.427,79	0,00	59.212,85	59.212,85	0,00	64.140,16	64.140,16	0,00	114.955,89	114.955,89
16-jun-21	12.916.664,73	370.107,12	13.286.771,85	0,00	60.528,69	60.528,69	0,00	65.565,50	65.565,50	0,00	117.510,47	117.510,47
16-sep-21	12.641.148,49	358.809,82	12.999.958,31	0,00	60.528,69	60.528,69	0,00	65.565,50	65.565,50	0,00	117.510,47	117.510,47
16-dic-21	12.282.581,18	343.973,56	12.626.554,74	0,00	59.870,77	59.870,77	0,00	64.852,83	64.852,83	0,00	116.233,18	116.233,18
16-mar-22	11.928.739,57	329.684,45	12.258.424,02	0,00	59.212,85	59.212,85	0,00	64.140,16	64.140,16	0,00	114.955,89	114.955,89
16-jun-22	11.857.715,98	326.577,54	12.184.293,51	0,00	60.528,69	60.528,69	0,00	65.565,50	65.565,50	0,00	117.510,47	117.510,47
16-sep-22	11.519.654,36	316.206,42	11.835.860,78	0,00	60.528,69	60.528,69	0,00	65.565,50	65.565,50	0,00	117.510,47	117.510,47
16-dic-22	11.152.064,27	302.803,47	11.454.867,74	0,00	59.870,77	59.870,77	0,00	64.852,83	64.852,83	0,00	116.233,18	116.233,18
16-mar-23	10.771.788,16	289.934,07	11.061.722,23	0,00	59.212,85	59.212,85	0,00	64.140,16	64.140,16	0,00	114.955,89	114.955,89
16-jun-23	10.676.511,12	286.955,72	10.963.466,85	0,00	60.528,69	60.528,69	0,00	65.565,50	65.565,50	0,00	117.510,47	117.510,47
18-sep-23	10.449.589,65	277.617,72	10.727.207,37	0,00	60.528,69	60.528,69	0,00	65.565,50	65.565,50	0,00	117.510,47	117.510,47
18-dic-23	10.155.298,07	265.559,96	10.420.858,02	0,00	59.870,77	59.870,77	0,00	64.852,83	64.852,83	0,00	116.233,18	116.233,18
18-mar-24	9.939.669,19	256.774,37	10.196.443,56	0,00	59.870,77	59.870,77	0,00	64.852,83	64.852,83	0,00	116.233,18	116.233,18
17-jun-24	9.802.910,72	250.902,53	10.053.813,25	0,00	60.528,69	60.528,69	0,00	65.565,50	65.565,50	0,00	117.510,47	117.510,47
16-sep-24	9.587.909,75	242.328,61	9.830.238,36	0,00	60.528,69	60.528,69	0,00	65.565,50	65.565,50	0,00	117.510,47	117.510,47
16-dic-24	9.316.009,65	231.399,88	9.547.409,53	0,00	59.870,77	59.870,77	0,00	64.852,83	64.852,83	0,00	116.233,18	116.233,18
17-mar-25	9.052.331,27	220.886,09	9.273.217,37	0,00	59.212,85	59.212,85	0,00	64.140,16	64.140,16	0,00	114.955,89	114.955,89
16-jun-25	8.988.879,63	217.877,23	9.206.756,86	0,00	60.528,69	60.528,69	0,00	65.565,50	65.565,50	0,00	117.510,47	117.510,47
16-sep-25	8.789.507,03	210.015,29	8.999.522,31	0,00	60.528,69	60.528,69	0,00	65.565,50	65.565,50	0,00	117.510,47	117.510,47
16-dic-25	8.540.493,58	200.128,51	8.740.622,09	0,00	59.870,77	59.870,77	0,00	64.852,83	64.852,83	0,00	116.233,18	116.233,18
16-mar-26	8.296.690,97	190.621,90	8.487.312,87	0,00	59.212,85	59.212,85	0,00	64.140,16	64.140,16	0,00	114.955,89	114.955,89
16-jun-26	8.233.169,32	187.601,41	8.420.770,73	0,00	60.528,69	60.528,69	0,00	65.565,50	65.565,50	0,00	117.510,47	117.510,47
16-sep-26	8.048.252,13	180.400,43	8.228.652,57	0,00	60.528,69	60.528,69	0,00	65.565,50	65.565,50	0,00	117.510,47	117.510,47
16-dic-26	7.820.392,99	171.476,83	7.991.869,82	0,00	59.870,77	59.870,77	0,00	64.852,83	64.852,83	0,00	116.233,18	116.233,18
16-mar-27	7.591.059,62	162.901,21	7.753.960,83	0,00	59.212,85	59.212,85	0,00	64.140,16	64.140,16	0,00	114.955,89	114.955,89
16-jun-27	7.525.197,57	159.881,87	7.685.079,44	0,00	60.528,69	60.528,69	0,00	65.565,50	65.565,50	0,00	117.510,47	117.510,47
16-sep-27	7.260.920,40	153.300,10	7.414.220,50	0,00	60.528,69	60.528,69	0,00	65.565,50	65.565,50	0,00	117.510,47	117.510,47
16-dic-27	7.009.169,45	145.352,21	7.154.521,66	0,00	59.870,77	59.870,77	0,00	64.852,83	64.852,83	0,00	116.233,18	116.233,18
16-mar-28	6.797.220,36	139.288,41	6.936.508,77	0,00	59.870,77	59.870,77	0,00	64.852,83	64.852,83	0,00	116.233,18	116.233,18
16-jun-28	6.666.569,11	134.874,00	6.801.443,11	0,00	60.528,69	60.528,69	0,00	65.565,50	65.565,50	0,00	117.510,47	117.510,47
18-sep-28	6.519.335,54	129.043,22	6.648.378,75	0,00	60.528,69	60.528,69	0,00	65.565,50	65.565,50	0,00	117.510,47	117.510,47
18-dic-28	6.337.221,28	122.000,54	6.459.221,83	0,00	59.870,77	59.870,77	0,00	64.852,83	64.852,83	0,00	116.233,18	116.233,18
16-mar-29	6.159.906,61	115.237,65	6.275.144,26	0,00	59.212,85	59.212,85	0,00	64.140,16	64.140,16	0,00	114.955,89	114.955,89
18-jun-29	6.105.439,46	112.410,84	6.217.850,31	0,00	60.528,69	60.528,69	0,00	65.565,50	65.565,50	0,00	117.510,47	117.510,47
17-sep-29	5.964.049,26	107.070,84	6.071.120,10	0,00	60.528,69	60.528,69	0,00	65.565,50	65.565,50	0,00	117.510,47	117.510,47
17-dic-29	5.795.341,12	100.747,39	5.896.088,52	0,00	59.870,77	59.870,77	0,00	64.852,83	64.852,83	0,00	116.233,18	116.233,18
18-mar-30	5.628.524,26	94.681,69	5.723.205,95	0,00	59.212,85	59.212,85	0,00	64.140,16	64.140,16	0,00	114.955,89	114.955,89
17-jun-30	105.030.509,68	91.862,85	105.122.372,53	38.300.000,00	60.528,69	38.360.528,69	21.200.000,00	65.565,50	21.265.565,50	23.000.000,00	117.510,47	23.117.510,47

UCI 18 FTA

Monthly Single Rate	7,58%
Average 12 Moth Single Rate	5,27%
Prepayment Rate from Constitution	7,32%
MONTHLY MORTALITY	0,63%

Series A	€1.640.500.000	EURIBOR 3M + 0,32%
Series B	€38.300.000	EURIBOR 3M + 0,60%
Series C	€21.200.000	EURIBOR 3M + 1,20%
Series D	€23.000.000	EURIBOR 3M + 2,00%

Date	Outstanding	Real outstanding	Prepaymnet vector CPR	Remaining end of month	Average Single Monthly Mortality	TACP	Monthly Single Monthly Mortality	TACP
								7,09%
21-02-08	1.700.000.358,58		100,00%	100,00%				
marzo-08	1.699.534.202,79	1.692.359.441,80	99,37%	99,58%	0,42%	4,95%	0,42%	4,95%
abril-08	1.697.729.238,59	1.678.364.447,50	98,74%	98,86%	0,57%	6,65%	0,72%	8,32%
mayo-08	1.695.916.152,05	1.666.419.627,18	98,12%	98,26%	0,58%	6,78%	0,61%	7,03%
junio-08	1.694.094.906,63	1.652.143.016,79	97,50%	97,52%	0,62%	7,25%	0,75%	8,64%
julio-08	1.692.265.465,60	1.639.840.406,75	96,88%	96,90%	0,63%	7,27%	0,64%	7,39%
agosto-08	1.690.427.792,08	1.631.473.101,44	96,27%	96,51%	0,59%	6,85%	0,40%	4,72%
septiembre-08	1.688.581.849,03	1.628.207.882,97	95,66%	96,42%	0,52%	6,05%	0,09%	1,09%
octubre-08	1.686.727.599,25	1.622.211.056,99	95,06%	96,18%	0,49%	5,68%	0,26%	3,06%
noviembre-08	1.684.865.005,33	1.615.728.933,78	94,45%	95,90%	0,46%	5,43%	0,29%	3,42%
diciembre-08	1.682.994.029,74	1.612.537.318,98	93,86%	95,81%	0,43%	5,00%	0,09%	1,03%
enero-09	1.681.114.634,77	1.607.615.093,31	93,26%	95,63%	0,41%	4,76%	0,19%	2,30%
febrero-09	1.679.226.782,51	1.603.487.091,84	92,68%	95,49%	0,38%	4,51%	0,14%	1,72%
marzo-09	1.677.330.434,93	1.595.826.525,35	92,09%	95,14%	0,38%	4,49%	0,37%	4,30%
abril-09	1.675.425.553,77	1.566.575.792,66	91,51%	93,50%	0,48%	5,60%	1,72%	18,81%
mayo-09	1.673.512.100,65	1.552.064.831,19	90,93%	92,74%	0,50%	5,85%	0,81%	9,33%
junio-09	1.671.590.037,00	1.544.750.348,61	90,35%	92,41%	0,49%	5,75%	0,36%	4,20%
julio-09	1.669.659.324,05	1.524.296.267,20	89,78%	91,29%	0,53%	6,23%	1,21%	13,59%
agosto-09	1.667.719.922,90	1.507.817.949,81	89,22%	90,41%	0,56%	6,50%	0,97%	11,00%
septiembre-09	1.665.771.794,44	1.503.046.324,62	88,65%	90,23%	0,54%	6,29%	0,20%	2,37%
octubre-09	1.663.814.899,41	1.489.099.849,73	88,09%	89,50%	0,55%	6,44%	0,81%	9,31%
noviembre-09	1.661.849.198,34	1.481.630.443,34	87,54%	89,16%	0,55%	6,35%	0,38%	4,51%
diciembre-09	1.659.874.651,63	1.475.702.733,79	86,98%	88,90%	0,53%	6,21%	0,28%	3,33%
enero-10	1.657.891.219,45	1.466.548.063,04	86,43%	88,46%	0,53%	6,20%	0,50%	5,85%
febrero-10	1.655.898.861,83	1.460.703.430,80	85,89%	88,21%	0,52%	6,08%	0,28%	3,29%
marzo-10	1.653.897.538,59	1.452.927.849,51	85,34%	87,85%	0,52%	6,03%	0,41%	4,83%
abril-10	1.651.887.209,41	1.447.253.314,85	84,80%	87,61%	0,51%	5,92%	0,27%	3,18%
mayo-10	1.649.867.853,74	1.439.850.210,84	84,27%	87,27%	0,50%	5,87%	0,39%	4,58%
junio-10	1.647.839.370,88	1.435.475.725,05	83,74%	87,11%	0,49%	5,74%	0,18%	2,15%
julio-10	1.645.801.779,94	1.422.172.426,11	83,21%	86,41%	0,50%	5,86%	0,80%	9,23%
agosto-10	1.643.755.019,84	1.416.204.099,65	82,68%	86,16%	0,50%	5,79%	0,30%	3,49%
septiembre-10	1.641.699.049,32	1.404.453.217,65	82,16%	85,55%	0,50%	5,86%	0,71%	8,15%
octubre-10	1.639.633.826,93	1.379.821.322,33	81,64%	84,15%	0,54%	6,26%	1,63%	17,90%
noviembre-10	1.637.559.311,04	1.371.414.950,75	81,12%	83,75%	0,54%	6,25%	0,48%	5,65%
diciembre-10	1.635.475.459,83	1.361.773.072,30	80,61%	83,26%	0,54%	6,26%	0,58%	6,70%
enero-11	1.633.382.231,29	1.354.319.358,56	80,10%	82,92%	0,53%	6,22%	0,42%	4,92%
febrero-11	1.631.279.583,22	1.346.201.065,94	79,60%	82,52%	0,53%	6,20%	0,47%	5,51%
marzo-11	1.629.167.473,23	1.343.742.419,64	79,09%	82,48%	0,52%	6,06%	0,05%	0,64%
abril-11	1.627.045.858,75	1.333.325.372,14	78,59%	81,95%	0,52%	6,09%	0,65%	7,48%
mayo-11	1.624.914.697,00	1.326.292.924,55	78,10%	81,62%	0,52%	6,06%	0,40%	4,66%
junio-11	1.622.773.945,03	1.323.917.492,63	77,60%	81,58%	0,51%	5,92%	0,05%	0,57%
julio-11	1.620.623.559,67	1.313.801.680,90	77,11%	81,07%	0,51%	5,96%	0,63%	7,33%
agosto-11	1.618.463.842,80	1.309.402.241,49	76,63%	80,90%	0,50%	5,87%	0,20%	2,40%
septiembre-11	1.616.294.407,19	1.297.667.808,64	76,14%	80,29%	0,51%	5,94%	0,76%	8,78%
octubre-11	1.614.115.209,13	1.267.972.713,97	75,66%	78,56%	0,55%	6,37%	2,16%	23,02%
noviembre-11	1.611.926.204,68	1.240.109.109,32	75,18%	76,93%	0,58%	6,75%	2,06%	22,15%
diciembre-11	1.609.727.349,70	1.238.885.831,16	74,71%	76,96%	0,57%	6,60%	-0,04%	-0,45%
enero-12	1.607.518.599,88	1.210.140.215,78	74,23%	75,28%	0,60%	6,99%	2,19%	23,30%
febrero-12	1.605.299.910,69	1.177.083.497,02	73,77%	73,32%	0,64%	7,46%	2,60%	27,08%
marzo-12	1.603.071.237,39	1.176.702.130,66	73,30%	73,40%	0,63%	7,29%	-1,29%	-1,29%
abril-12	1.600.832.535,07	1.149.924.943,27	72,84%	71,83%	0,66%	7,63%	2,14%	22,85%
mayo-12	1.598.583.758,58	1.139.451.929,49	72,38%	71,28%	0,66%	7,66%	0,77%	8,87%
junio-12	1.596.324.862,60	1.136.324.235,71	71,92%	71,18%	0,65%	7,54%	0,13%	1,59%
julio-12	1.594.055.801,58	1.133.196.541,93	71,46%	71,09%	0,64%	7,44%	0,13%	1,59%
agosto-12	1.591.776.529,80	1.130.068.848,15	71,01%	70,99%	0,63%	7,33%	0,13%	1,59%
septiembre-12	1.589.487.001,29	1.124.045.136,89	70,56%	70,72%	0,63%	7,28%	0,39%	4,58%
octubre-12	1.587.187.169,90	1.117.629.995,40	70,12%	70,42%	0,62%	7,24%	0,43%	5,00%
noviembre-12	1.584.876.989,27	1.112.416.895,63	69,67%	70,19%	0,62%	7,18%	0,32%	3,79%
diciembre-12	1.582.556.412,82	1.109.796.466,08	69,23%	70,13%	0,61%	7,08%	0,09%	1,07%
enero-13	1.580.225.393,79	1.100.726.135,49	68,80%	69,66%	0,61%	7,09%	0,67%	7,76%
febrero-13	1.577.883.885,16	1.096.999.022,85	68,36%	69,52%	0,60%	7,01%	0,19%	2,26%
marzo-13	1.575.531.839,75	1.094.433.567,45	67,93%	69,46%	0,60%	6,92%	0,08%	1,01%
abril-13	1.573.169.210,14	1.087.371.004,91	67,50%	69,12%	0,59%	6,90%	0,50%	5,79%
mayo-13	1.570.795.948,69	1.055.512.378,00	67,07%	67,20%	0,63%	7,29%	2,78%	28,73%
junio-13	1.568.412.007,56	1.051.837.639,37	66,65%	67,06%	0,62%	7,22%	0,20%	2,33%
julio-13	1.566.017.338,70	1.045.504.953,91	66,23%	66,76%	0,62%	7,19%	0,45%	5,27%
agosto-13	1.563.611.893,83	1.038.650.897,61	65,81%	66,43%	0,62%	7,17%	0,50%	5,87%
septiembre-13	1.561.195.624,46	1.035.690.505,04	65,40%	66,34%	0,61%	7,09%	0,13%	1,56%
octubre-13	1.558.768.481,87	1.027.356.546,19	64,98%	65,91%	0,61%	7,09%	0,65%	7,53%
noviembre-13	1.556.330.417,15	1.018.163.215,85	64,57%	65,42%	0,61%	7,11%	0,74%	8,52%
diciembre-13	1.553.881.381,13	1.014.265.038,38	64,16%	65,27%	0,61%	7,05%	0,23%	2,68%
enero-14	1.551.421.324,45	994.641.101,86	63,76%	64,11%	0,62%	7,24%	1,78%	19,38%
febrero-14	1.548.950.197,52	983.324.413,90	63,35%	63,48%	0,63%	7,29%	0,98%	11,15%
marzo-14	1.546.467.950,51	969.848.846,83	62,95%	62,71%	0,64%	7,38%	1,21%	13,61%
abril-14	1.543.974.533,39	950.264.712,72	62,56%	61,55%	0,65%	7,57%	1,86%	20,18%
mayo-14	1.541.469.895,90	939.769.472,62	62,16%	60,97%	0,68%	7,61%	0,94%	10,76%
junio-14	1.538.953.987,63	936.904.277,09	61,77%	60,88%	0,65%	7,54%	0,14%	1,69%
julio-14	1.536.426.757,58	933.402.930,64	61,38%	60,75%	0,65%	7,47%	0,21%	2,49%
agosto-14	1.533.897.636,16	923.162.438,53	60,99%	60,18%	0,65%	7,51%	0,93%	10,65%
septiembre-14	1.531.357.133,69	910.297.768,50	60,61%	59,44%	0,68%	7,60%	1,23%	13,80%
octubre-14	1.528.805.198,97	901.499.079,50	60,22%	58,97%	0,66%	7,62%	0,80%	9,20%
noviembre-14	1.526.241.780,63	889.870.646,63	59,84%	58,30%	0,66%	7,68%	1,12%	12,69%
diciembre-14	1.523.666.826,71	886.830.972,15	59,46%	58,20%	0,66%	7,61%	0,17%	2,06%
enero-15	1.521.080.285,60	875.865.718,55	59,09%	57,58%	0,66%	7,67%	1,07%	12,09%
febrero-15	1.518.489.606,46	870.393.069,34	58,71%	57,32%	0,66%	7,64%	0,46%	5,33%
marzo-15	1.515.887.269,26	867.513.333,20	58,34%	57,23%	0,65%	7,58%	0,16%	1,90%
abril-15	1.513.273.221,54	859.396.629,09						