



F.T.H. UCI 5

O CTIC'LQUG'J GTGPEKU
CPCN[UV
UCPVCPF GT'FG'VKWVK CEKQP.'UI (HW.'UC0
EKWF CF'I TWRQ'UCPVCPF GT
4: 882''DQCF KNC'F GN'O QP VG
o lj gt gpekuB i t wr quepcpf gt @qo
Vgn'; 34: ; 5522



NAME OF THE FUND: F.T.H. UCI 5

INFORMATION AT: QUARTER/SEMESTER: 01st 6th 2013 - T 6th 2013 YEAR: 2013

Acting on behalf of Santander de Titulización S.G.F.T., S.A. as General Manager:	Signature:

I. DATA OF THE FUND

Constitution Date	R 1 st 1 st 2013	Paying Agent	ÓBÓUÁÚÓBÓÓÚ	
Disbursement Date	R 1 st 1 st 2013	Negotiation Market	ÓBÓ	
Final Date of Redemption	01 st 6 th 2013	Ratings Agencies	T U U Ó Y Ó Á Ó U Ó E Ó E	
Management Company	ÓBÓVÓBÓÓÚÓÓÁQWSZÓÓWÓBÓBÓVÓBÓE	Rating	Initial	Current
Credit Rights's Seller	WÓWÓÁÓÓÚÓÓUÁÓT UÓÓÓÓÚ	CLASS A	ÓBÓ	ÁÓE
		CLASS B	ÓB	ÓBÓ

II. SECURITIES ISSUED CHARGED TO THE FUND: SECURITISATION BONDS

CLASS PRIORITY ISIN CODE	NUM BONDS	NOMINAL			
			Initial	Current	%Act/In
CLASS A ES0338557004	2.530	Nominal per Bond	100.000,00	7.268,15	
		Total Nominal	253.000.000,00	18.388.419,50	7,27 %
CLASS B ES0338557012	120	Nominal per Bond	100.000,00	22.083,24	
		Total Nominal	12.000.000,00	2.649.989,20	22,08 %

REDEMPTION AND INTEREST OF THE BONDS					
Current			Next		
Payment Date of the Current Period May 16, 2013			Next Payment Date August 16, 2013		
	Redemption of the Bonds	Gross Interest	Interest Rate	Gross Interest Next Coupon	Net Interest Next Coupon
CLASS A	336,91 €	8,67 €	0,4390 %	8,04 €	6,35 €
CLASS B	0,09 €	46,98 €	0,8395 %	46,73 €	36,92 €
Accrued amortisation due not payed	0,00 €				
Scheduled Amortisation	NO				

III. ASSET PURCHASED BY THE FUND: CREDIT RIGHTS

CREDIT RIGHTS	ISSUE DATE	CURRENT DATE
Number of CR's	5.502	986
CR's Outstanding to be amortised	265.000.190,10	21.038.408,47
CR's Outstanding per Loan to be amortised	48.164,34	21.337,1H
Interest Rate	5,10 %	2,10 %

PREPAYMENT RATE	CURRENT SITUATION
Monthly Single Rate	3,90 %
Average Monthly Single Rate	4,90 %
Constant Prepayment Rate from Constitution	11,78 %

CURRENT DELINQUENCY	Up to 1 month	From 1 to 6 months	Greater than 6 months
Debt Due (Principal + Interest)	6.112,11	1.112,11	1.112,11
Debt to be amortised	0,00	0,00	21.021.000,00
Total Debt	6.112,11	1.112,11	21.032.112,11

F.T.H. UCI 5

QUARTERLY BONDS PAYOUT REPORT

May 16th, 2013

BONDS. PRINCIPAL	
Previous Balance	21.890.801,40 €
Principal Amortised	852.382,30 €
Outstanding Balance	21.038.419,10 €
% of Initial Balance	7,94%
Principal accrued and unpaid	0,00 €

INTEREST PAID	
CLASS A	21.935,10 €
CLASS B	5.637,60 €
Interest accrued and unpaid	0,00 €

DATA	
Determination Date	May 8th, 2013
Payment Date	May 16th, 2013
Last Payment Date	February 15th, 2013
Number of Days (Act/360)	90
Reference Interest Rate (%)	0,203%
Next Payment Date	August 16th, 2013

RESIDUAL LIFE (YEARS)		
	INITIAL	February 15th, 2013
CLASS A	7,50	0,27
CLASS B	10,40	0,27

F.T.H. UCI 5

QUARTERLY COLLATERAL REPORT

May 16th, 2013

PRINCIPAL	
Previous Balance	21.890.813,65 €
Principal Amortised	852.405,18 €
Outstanding Balance	21.038.408,47 €
Number of Credit Rights	986
LTV	28,55%

INTEREST	
Interest received during relevant period	125.673,00 €
Interest accrued during relevant period	121.644,48 €

PRINCIPAL BALANCE IN ARREARS						
	UP to 30 DAYS	30 to 60 DAYS	60 to 90 DAYS	90 to 180 DAYS	180 TO 365 DAYS	> 365 DAYS
Principal Balance in Arrears	5.289,35 €	3.128,46 €	2.130,17 €	576,34 €	3.631,97 €	2.381,17 €
Interest accrued on Credit Rights in Arrears	1.480,31 €	980,86 €	543,95 €	219,90 €	1.348,45 €	3.210,18 €
Outstanding Balance	765.435,68 €	299.488,14 €	107.050,39 €	27.061,13 €	86.315,43 €	126.411,70 €
Number of Credit Rights	3	10	4	1	4	3
% of Outstanding Balance	3,50%	1,37%	0,49%	0,12%	0,39%	0,58%

F.T.H. UCI 5

QUARTERLY REPORT - ALLOCATION OF CASH

May 16th, 2013

TOTAL CASH RECEIVED END OF PERIOD	975.187,30 €
CASH RECEIVED - PRINCIPAL	
Amortisation of Credit Rights	852.405,18 €
CASH RECEIVED - INTEREST	
Interest received from Credit Rights	125.673,00 €
Interest received under GIC	-3,82 €
CONTENTIOUS / JUDICIALS	
OTHERS	-2.887,06 €

TOTAL CASH PAID END OF PERIOD	975.187,30 €
ORDINARY EXPENSES	491,68 €
MANAGEMENT FEE	2.968,75 €
INTEREST PAID TO BTH's CLASS A	21.935,10 €
INTEREST PAID TO BTH's CLASS B	5.637,60 €
REDEMPTION PAID TO BTH's CLASS A	852.382,30 €
REDEMPTION PAID TO BTH's CLASS B	0,00 €
INTEREST PAID ON SUBORDINATED LOAN A (SANTANDER)	4.021,66 €
INTEREST PAID ON SUBORDINATED LOAN A (PARIBAS)	4.021,66 €
ADMINISTRATION FEE	6.000,00 €
VARIABLE FEE	77.728,55 €

TREASURY ACCOUNT STATEMENT	2.650.000,00 €
PRINCIPAL RESERVE FUND	
Previous Balance	2.650.000,00 €
Period utilization	0,00 €
Outstanding Balance	2.650.000,00 €

F.T.H. UCI 5

CREDIT ENHACEMENT AND SUBORDINATED LOAN

May 16th, 2013

CREDIT ENHACEMENT		
CONCEPTS	INITIAL	May 16th, 2013
SUBORDINATED ISSUE	4,53 %	12,60%
PRINCIPAL RESERVE FUND	5.565.000,00 € (2,10 %)	2.650.000,00 € 12,60%

SUBORDINATED LOANS		
CONCEPTS	INITIAL	May 16th, 2013
SUBORDINATED LOAN A SANTANDER		
Total Outstanding Subordinated Loan	3.220.523,36 €	1.326.021,73 €
Interest Rate	3,620%	1,00%
SUBORDINATED LOAN A PARIBAS		
Total Outstanding Subordinated Loan	3.220.523,36 €	1.326.021,72 €
Interest Rate	3,620%	1,00%

F.T.H. UCI 5

DEFINITIONS

DETERMINATION DATE Means the date in which the Gestora will carry out the necessary calculations, on behalf of the Fund, for the distribution of the available funds at this date, according with the Order of Priority of Payments.

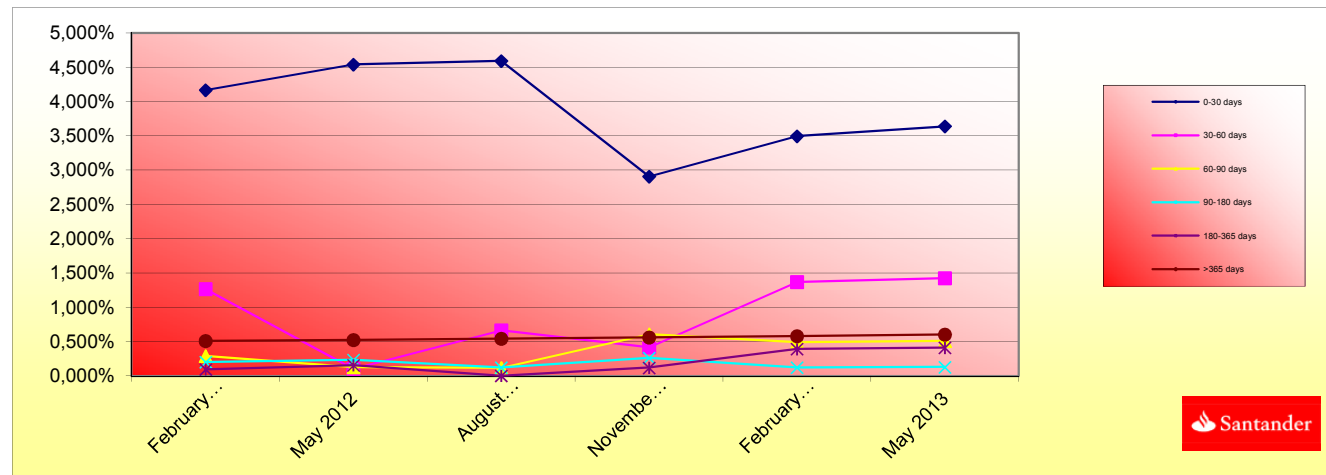
All the information regarding the Assets (Outstanding Balance of the Credit Rights, arrears' tables, transitory properties, stratification tables, etc.) are referred to this mentioned date.

TRANSITORY PROPERTIES Those assets in the balance of the Fund as a consequence of a judicial or non-judicial process.

**FONDO DE TITULIZACIÓN HIPOTECARIA
UCI 5**

HISTORICAL ARREARS REPORT

Data	February 2012	May 2012	August 2012	November 2012	February 2013	May 2013
0-30 days	4,169%	4,542%	4,594%	2,909%	3,497%	3,638%
30-60 days	1,266%	0,103%	0,661%	0,416%	1,368%	1,424%
60-90 days	0,289%	0,128%	0,117%	0,605%	0,489%	0,509%
90-180 days	0,202%	0,235%	0,121%	0,262%	0,124%	0,129%
180-365 days	0,094%	0,153%	0,000%	0,120%	0,394%	0,410%
>365 days	0,508%	0,525%	0,543%	0,558%	0,577%	0,601%



**FONDO DE TITULIZACION DE ACTIVOS
UCI 5**

TRIGGERS

TRIGGERS BONDS

1. IF 1.a) IS HIGHER THAN 1.b) THERE IS NO REDEMPTION OF CLASS B:

1.a) MP's IN ARREARS OVER 90 DAYS	239.788,26 €
1.b) 7% MP'S OUTSTANDING BALANCE	1.472.688,59 €

TRIGGERS RESERVE FUND

1. IF 1.a) IS HIGHER THAN 1.b) THERE IS NO REDEMPTION OF RESERVE FUND:

1.a) MP'S IN ARREARS OVER 90 DAYS	N/A
1.b) 3% MP'S OUTSTANDING BALANCE	N/A

2. IF 2.a) IS LOWER THAN 2.b) THERE IS NO REDEMPTION OF RESERVE FUND:

2.a) WEIGHTED AVERAGE RATE MP'S	N/A
2.b) WEIGHTED AVERAGE RATE BONDS A AND B + 0,25%	N/A

3. IF 3.a) IS HIGHER THAN 3.b) THERE IS NO REDEMPTION OF RESERVE FUND:

3.a) WRITTE OFF	N/A
3.b) 0,025% INITIAL OUTSTANDING BALANCE MP'S *N/A PAYMENT DATES	N/A

THE RESERV FUND IS IN MINIMUM LEVEL REQUIERED EQUIVALENT TO 1% OF THE INITIAL MP'S OUTSTANDING BALANCE

**FONDO DE TITULIZACIÓN HIPOTECARIA
UCI 5**

L.T.V.

LTV (%)	OUTS. BALANC	% OUTSTANDING	LOANS	% LOANS
	SALDOS VIVOS	% SALDOS VIVOS	Nº. DE PRESTAMOS	% Nº DE PRESTAMOS
0,02-9,99	508.037,78	2,4149%	102	10,3659%
10,00 - 19,99	2.420.968,44	11,5078%	184	18,6992%
20,00 - 29,99	5.130.998,05	24,3897%	276	28,0488%
30,00 - 39,99	4.651.799,74	22,1118%	159	15,9553%
40,00 - 49,99	5.118.772,57	24,3315%	168	17,0732%
50,00 - 59,99	3.146.576,36	14,9569%	95	9,6545%
60,00 - 70,00	61.255,53	0,2873%	2	0,2033%

F.T.H.: UCI 5

Counterpart

Agreement	Counterpart	Rating Agency	Minimum rating	Current rating
Treasury account	Banco Santander S.A.	Moody's	S/T: P-1	P-2

COUNTERPARTY DOES NOT HAVE THE MINIMUM RATING REQUIRED. TREASURY ACCOUNT HAS BEEN TRANSFERRED TO A COUNTERPARTY WITH MINIMUM RATING REQUIRED.

UCI 5

Date	Real Outstanding	1,05%		Average Single monthly mortality	CPR	Monthly Single monthly mortality	4,90%
		Prepayment vector	Remaining at the end of the month				CPR
	265.000.190,1		100,00%	100,00%			
julio-99	264.353.986,2	261.013.400,2	98,95%	98,74%	1,26%	14,15%	1,26%
agosto-99	263.705.035,9	257.903.244,9	97,91%	97,80%	1,11%	12,50%	0,95%
septiembre-99	263.053.327,6	256.480.934,6	96,89%	97,50%	0,84%	9,63%	0,31%
octubre-99	262.398.849,6	254.314.688,6	95,87%	96,92%	0,78%	8,96%	0,60%
noviembre-99	261.741.590,0	252.653.080,9	94,87%	96,53%	0,70%	8,13%	0,40%
diciembre-99	261.081.537,0	249.659.606,1	93,87%	95,63%	0,74%	8,56%	0,93%
enero-00	260.419.897,8	247.491.249,5	92,89%	95,04%	0,72%	8,36%	0,62%
febrero-00	259.755.446,6	245.717.575,5	91,91%	94,60%	0,69%	8,00%	0,46%
marzo-00	259.088.171,5	243.447.809,7	90,95%	93,96%	0,69%	7,97%	0,67%
abril-00	258.418.060,5	240.457.172,0	90,00%	93,05%	0,72%	8,28%	0,97%
mayo-00	257.745.101,5	238.473.761,8	89,05%	92,52%	0,70%	8,13%	0,57%
junio-00	257.069.282,4	236.040.146,9	88,12%	91,82%	0,71%	8,18%	0,76%
julio-00	256.390.750,2	233.330.106,1	87,20%	91,01%	0,72%	8,33%	0,89%
agosto-00	255.709.334,2	231.317.292,6	86,28%	90,46%	0,71%	8,23%	0,60%
septiembre-00	255.025.022,2	229.266.542,5	85,38%	89,90%	0,71%	8,17%	0,62%
octubre-00	254.337.801,8	227.277.014,1	84,48%	89,36%	0,70%	8,09%	0,60%
noviembre-00	253.647.660,8	225.218.773,1	83,60%	88,79%	0,70%	8,05%	0,64%
diciembre-00	252.954.586,7	222.849.442,2	82,72%	88,10%	0,70%	8,10%	0,78%
enero-01	252.258.993,8	219.871.311,8	81,85%	87,16%	0,72%	8,31%	1,06%
febrero-01	251.560.444,6	217.695.642,5	81,00%	86,54%	0,72%	8,31%	0,71%
marzo-01	250.858.926,6	215.432.234,4	80,15%	85,88%	0,72%	8,33%	0,76%
abril-01	250.154.427,1	212.536.457,5	79,31%	84,96%	0,74%	8,51%	1,07%
mayo-01	249.446.933,5	209.818.457,4	78,47%	84,11%	0,75%	8,63%	1,00%
junio-01	248.736.433,1	206.739.491,5	77,65%	83,12%	0,77%	8,83%	1,19%
julio-01	248.023.060,0	203.095.332,4	76,84%	81,89%	0,80%	9,15%	1,48%
agosto-01	247.306.655,1	200.264.043,8	76,03%	80,98%	0,81%	9,28%	1,11%
septiembre-01	246.587.205,5	198.420.530,8	75,24%	80,47%	0,80%	9,21%	0,63%
octubre-01	245.864.698,2	195.833.760,9	74,45%	79,65%	0,81%	9,29%	1,01%
noviembre-01	245.139.120,3	193.484.003,6	73,67%	78,93%	0,81%	9,33%	0,91%
diciembre-01	244.410.458,7	190.106.061,4	72,89%	77,78%	0,83%	9,56%	1,45%
enero-02	243.679.232,8	187.678.028,1	72,13%	77,02%	0,84%	9,61%	0,98%
febrero-02	242.944.899,3	185.061.871,5	71,37%	76,17%	0,85%	9,70%	1,10%
marzo-02	242.207.444,8	181.647.819,3	70,63%	75,00%	0,87%	9,93%	1,55%
abril-02	241.466.856,1	178.351.253,9	69,88%	73,86%	0,89%	10,14%	1,51%
mayo-02	240.723.120,0	174.919.259,5	69,15%	72,66%	0,91%	10,37%	1,62%
junio-02	239.976.222,9	171.288.232,4	68,43%	71,38%	0,93%	10,63%	1,77%
julio-02	239.227.731,7	168.000.812,5	67,71%	70,23%	0,95%	10,83%	1,61%
agosto-02	238.476.059,3	165.450.625,4	67,00%	69,38%	0,96%	10,90%	1,21%
septiembre-02	237.721.192,4	163.236.867,0	66,30%	68,67%	0,96%	10,92%	1,02%
octubre-02	236.963.117,3	161.039.181,7	65,60%	67,96%	0,96%	10,94%	1,03%
noviembre-02	236.201.820,3	159.057.604,1	64,91%	67,34%	0,96%	10,93%	0,91%
diciembre-02	235.437.287,9	156.488.093,0	64,23%	66,47%	0,97%	11,02%	1,30%
enero-03	234.669.893,6	154.282.351,2	63,56%	65,74%	0,97%	11,05%	1,09%

							4,90%	
Date	Real Outstanding		1,05%		Average Single monthly mortality	CPR	Monthly Single monthly mortality	CPR
			Prepayment vector	Remaining at the end of the month				
febrero-03	233.899.237,9	151.506.462,2	62,89%	64,77%	0,98%	11,17%	1,48%	16,34%
marzo-03	233.125.307,0	148.727.230,4	62,23%	63,80%	0,99%	11,30%	1,51%	16,67%
abril-03	232.348.086,8	146.215.615,1	61,58%	62,93%	1,00%	11,38%	1,36%	15,15%
mayo-03	231.567.563,5	143.479.637,3	60,94%	61,96%	1,01%	11,50%	1,54%	17,00%
junio-03	230.783.722,9	140.702.135,4	60,30%	60,97%	1,03%	11,64%	1,60%	17,62%
julio-03	229.998.623,8	137.162.888,3	59,67%	59,64%	1,05%	11,89%	2,18%	23,27%
agosto-03	229.210.188,1	133.747.799,5	59,04%	58,35%	1,07%	12,13%	2,15%	23,00%
septiembre-03	228.418.401,6	130.947.326,4	58,42%	57,33%	1,09%	12,27%	1,75%	19,14%
octubre-03	227.623.249,9	127.272.068,0	57,81%	55,91%	1,11%	12,56%	2,47%	25,90%
noviembre-03	226.824.718,9	123.286.705,2	57,20%	54,35%	1,14%	12,89%	2,79%	28,79%
diciembre-03	226.022.794,1	120.012.588,8	56,60%	53,10%	1,17%	13,12%	2,31%	24,46%
enero-04	225.218.267,8	117.053.168,8	56,01%	51,97%	1,18%	13,31%	2,12%	22,65%
febrero-04	224.410.322,2	115.078.520,2	55,42%	51,28%	1,19%	13,33%	1,33%	14,87%
marzo-04	223.598.942,9	112.415.752,4	54,84%	50,28%	1,20%	13,48%	1,96%	21,14%
abril-04	222.784.115,2	110.174.701,8	54,27%	49,45%	1,21%	13,56%	1,64%	17,95%
mayo-04	221.965.824,5	107.622.167,6	53,70%	48,49%	1,22%	13,69%	1,96%	21,11%
junio-04	221.144.056,1	104.717.994,6	53,13%	47,35%	1,24%	13,89%	2,34%	24,71%
julio-04	220.323.291,5	102.363.258,3	52,58%	46,46%	1,25%	14,00%	1,88%	20,41%
agosto-04	219.499.038,7	100.064.133,0	52,03%	45,59%	1,26%	14,10%	1,88%	20,36%
septiembre-04	218.671.282,7	98.428.470,1	51,48%	45,01%	1,26%	14,11%	1,26%	14,14%
octubre-04	217.840.008,9	96.233.838,6	50,94%	44,18%	1,27%	14,20%	1,86%	20,14%
noviembre-04	217.005.202,1	94.758.562,0	50,41%	43,67%	1,27%	14,18%	1,15%	13,00%
diciembre-04	216.166.847,4	92.484.371,8	49,88%	42,78%	1,28%	14,30%	2,02%	21,73%
enero-05	215.328.250,6	90.417.486,9	49,36%	41,99%	1,29%	14,39%	1,85%	20,11%
febrero-05	214.486.089,7	88.331.108,7	48,84%	41,18%	1,30%	14,49%	1,92%	20,79%
marzo-05	213.640.349,7	86.068.896,1	48,33%	40,29%	1,31%	14,62%	2,18%	23,20%
abril-05	212.791.015,3	84.072.439,5	47,82%	39,51%	1,32%	14,72%	1,93%	20,85%
mayo-05	211.938.071,2	81.894.420,0	47,32%	38,64%	1,33%	14,85%	2,20%	23,42%
junio-05	211.081.502,1	79.530.987,7	46,82%	37,68%	1,35%	15,01%	2,49%	26,13%
julio-05	210.228.080,2	78.139.862,7	46,33%	37,17%	1,35%	15,01%	1,35%	15,05%
agosto-05	209.371.031,1	76.205.933,6	45,85%	36,40%	1,36%	15,12%	2,08%	22,25%
septiembre-05	208.510.339,7	74.860.166,0	45,37%	35,90%	1,36%	15,12%	1,36%	15,16%
octubre-05	207.645.990,2	72.931.928,1	44,89%	35,12%	1,37%	15,23%	2,17%	23,15%
noviembre-05	206.777.967,3	71.286.868,8	44,42%	34,48%	1,37%	15,29%	1,85%	20,03%
diciembre-05	205.906.255,3	69.528.590,7	43,95%	33,77%	1,38%	15,38%	2,05%	22,04%
enero-06	205.033.628,0	68.235.195,8	43,49%	33,28%	1,38%	15,39%	1,44%	16,00%
febrero-06	204.157.292,1	66.446.036,5	43,04%	32,55%	1,39%	15,50%	2,20%	23,47%
marzo-06	203.277.231,7	65.146.093,0	42,59%	32,05%	1,40%	15,51%	1,53%	16,91%
abril-06	202.393.431,0	63.564.098,9	42,14%	31,41%	1,40%	15,59%	2,00%	21,55%
mayo-06	201.505.874,2	62.426.386,6	41,70%	30,98%	1,40%	15,58%	1,36%	15,12%
junio-06	200.614.545,3	61.098.222,6	41,26%	30,46%	1,41%	15,62%	1,69%	18,52%
julio-06	199.723.488,6	59.978.865,1	40,83%	30,03%	1,41%	15,62%	1,39%	15,50%
agosto-06	198.828.644,9	59.075.688,1	40,40%	29,71%	1,40%	15,58%	1,06%	12,03%
septiembre-06	197.929.998,2	58.383.870,3	39,98%	29,50%	1,39%	15,50%	0,72%	8,33%
octubre-06	197.027.532,2	57.611.065,2	39,56%	29,24%	1,39%	15,44%	0,87%	9,97%
noviembre-06	196.121.230,7	56.814.660,6	39,14%	28,97%	1,38%	15,38%	0,93%	10,57%
diciembre-06	195.211.077,4	55.845.313,7	38,73%	28,61%	1,38%	15,37%	1,25%	13,99%
enero-07	194.301.305,5	54.966.798,6	38,33%	28,29%	1,38%	15,34%	1,11%	12,56%
febrero-07	193.387.667,0	53.889.758,7	37,92%	27,87%	1,38%	15,35%	1,50%	16,55%
marzo-07	192.470.145,5	52.978.863,2	37,53%	27,53%	1,38%	15,33%	1,22%	13,71%
abril-07	191.548.724,5	52.182.528,3	37,13%	27,24%	1,37%	15,30%	1,03%	11,68%
mayo-07	190.623.387,6	51.279.341,8	36,74%	26,90%	1,37%	15,28%	1,25%	14,05%
junio-07	189.694.117,9	50.018.067,9	36,36%	26,37%	1,38%	15,35%	1,98%	21,35%

Date	Real Outstanding	1,05%		Average Single monthly mortality	CPR	Monthly Single monthly mortality	4,90%	
		Prepayment vector	Remaining at the end of the month				CPR	
								CPR
julio-07	188.770.434,1	49.383.970,4	35,98%	26,16%	1,37%	15,29%	0,78%	9,02%
agosto-07	187.842.824,6	48.690.936,0	35,60%	25,92%	1,37%	15,24%	0,92%	10,46%
septiembre-07	186.911.272,7	48.143.078,1	35,23%	25,76%	1,36%	15,16%	0,63%	7,33%
octubre-07	185.975.761,8	47.614.819,1	34,86%	25,60%	1,35%	15,08%	0,60%	6,96%
noviembre-07	185.036.275,0	46.977.478,4	34,49%	25,39%	1,35%	15,03%	0,84%	9,60%
diciembre-07	184.092.795,3	46.071.049,9	34,13%	25,03%	1,35%	15,04%	1,43%	15,84%
enero-08	183.163.640,0	45.357.426,9	33,77%	24,76%	1,35%	15,01%	1,05%	11,89%
febrero-08	182.230.535,9	44.809.637,5	33,42%	24,59%	1,34%	14,94%	0,70%	8,10%
marzo-08	181.293.466,0	44.216.232,1	33,07%	24,39%	1,33%	14,89%	0,81%	9,35%
abril-08	180.352.413,5	43.469.446,6	32,72%	24,10%	1,33%	14,88%	1,18%	13,23%
mayo-08	179.407.361,6	42.897.712,5	32,38%	23,91%	1,33%	14,83%	0,80%	9,14%
junio-08	178.458.293,3	42.147.278,9	32,04%	23,62%	1,33%	14,82%	1,23%	13,77%
julio-08	177.517.804,9	41.602.305,7	31,70%	23,44%	1,32%	14,76%	0,77%	8,86%
agosto-08	176.573.319,5	40.960.135,8	31,37%	23,20%	1,32%	14,73%	1,02%	11,54%
septiembre-08	175.624.820,0	40.490.560,5	31,04%	23,06%	1,31%	14,67%	0,61%	7,11%
octubre-08	174.672.289,5	40.107.446,3	30,72%	22,96%	1,31%	14,58%	0,41%	4,76%
noviembre-08	173.715.710,6	39.597.674,6	30,39%	22,79%	1,30%	14,53%	0,73%	8,39%
diciembre-08	172.755.066,3	39.178.088,7	30,08%	22,68%	1,29%	14,46%	0,51%	5,94%
enero-09	171.797.806,3	38.706.315,0	29,76%	22,53%	1,29%	14,40%	0,65%	7,57%
febrero-09	170.836.477,9	38.329.263,7	29,45%	22,44%	1,28%	14,32%	0,42%	4,89%
marzo-09	169.871.063,9	37.916.294,6	29,14%	22,32%	1,27%	14,26%	0,52%	6,01%
abril-09	168.901.546,9	37.603.809,8	28,83%	22,26%	1,26%	14,17%	0,25%	3,02%
mayo-09	167.927.909,4	37.252.714,2	28,53%	22,18%	1,26%	14,09%	0,36%	4,23%
junio-09	166.950.134,0	36.856.641,4	28,23%	22,08%	1,25%	14,02%	0,48%	5,65%
julio-09	165.980.411,5	36.389.069,9	27,94%	21,92%	1,25%	13,97%	0,69%	7,99%
agosto-09	165.006.567,7	36.017.087,7	27,64%	21,83%	1,24%	13,90%	0,44%	5,13%
septiembre-09	164.028.585,1	35.618.461,1	27,35%	21,71%	1,23%	13,84%	0,52%	6,03%
octubre-09	163.046.446,0	35.235.370,7	27,07%	21,61%	1,23%	13,78%	0,48%	5,61%
noviembre-09	162.060.132,9	34.880.086,1	26,78%	21,52%	1,22%	13,71%	0,41%	4,76%
diciembre-09	161.069.627,9	34.232.283,8	26,50%	21,25%	1,22%	13,71%	1,25%	14,05%
enero-10	160.088.816,9	33.803.668,5	26,23%	21,12%	1,22%	13,67%	0,65%	7,49%
febrero-10	159.103.837,5	33.397.900,7	25,95%	20,99%	1,21%	13,61%	0,59%	6,84%
marzo-10	158.114.671,8	33.044.002,3	25,68%	20,90%	1,21%	13,55%	0,44%	5,16%
abril-10	157.121.302,3	32.646.459,1	25,41%	20,78%	1,20%	13,50%	0,58%	6,72%
mayo-10	156.123.710,9	32.239.836,4	25,14%	20,65%	1,20%	13,45%	0,61%	7,13%
junio-10	155.121.879,7	31.934.481,1	24,88%	20,59%	1,19%	13,38%	0,31%	3,63%
julio-10	154.140.242,3	31.519.729,7	24,62%	20,45%	1,19%	13,34%	0,67%	7,75%
agosto-10	153.154.432,9	31.170.803,3	24,36%	20,35%	1,18%	13,29%	0,47%	5,50%
septiembre-10	152.164.433,8	30.851.818,8	24,10%	20,28%	1,18%	13,22%	0,38%	4,46%
octubre-10	151.170.227,2	30.477.131,0	23,85%	20,16%	1,17%	13,18%	0,56%	6,57%
noviembre-10	150.171.795,2	30.079.763,9	23,60%	20,03%	1,17%	13,14%	0,65%	7,50%
diciembre-10	149.169.119,9	29.766.288,9	23,35%	19,95%	1,16%	13,08%	0,38%	4,43%
enero-11	148.178.674,7	29.343.246,4	23,11%	19,80%	1,16%	13,05%	0,76%	8,77%
febrero-11	147.184.020,2	28.899.715,1	22,87%	19,64%	1,16%	13,02%	0,85%	9,69%
marzo-11	146.185.138,4	28.477.477,3	22,63%	19,48%	1,15%	13,00%	0,79%	9,05%
abril-11	145.182.011,3	28.149.264,4	22,39%	19,39%	1,15%	12,95%	0,47%	5,49%
mayo-11	144.174.621,0	27.875.506,2	22,16%	19,33%	1,14%	12,88%	0,28%	3,32%
junio-11	143.162.949,2	27.531.658,58	21,92%	19,23%	1,14%	12,84%	0,54%	6,24%
julio-11	142.167.173,2	27.255.890,1	21,69%	19,17%	1,13%	12,78%	0,31%	3,64%
agosto-11	141.167.165,0	26.968.593,2	21,47%	19,10%	1,13%	12,72%	0,35%	4,16%
septiembre-11	140.162.906,8	26.647.535,6	21,24%	19,01%	1,12%	12,67%	0,48%	5,64%
octubre-11	139.154.380,6	26.327.911,16	21,02%	18,92%	1,12%	12,63%	0,48%	5,65%
noviembre-11	138.141.568,1	25.988.413,2	20,80%	18,81%	1,11%	12,59%	0,57%	6,58%
diciembre-11	137.124.451,1	25.713.640,1	20,58%	18,75%	1,11%	12,53%	0,32%	3,81%
enero-12	136.120.474,7	25.369.483,3	20,36%	18,64%	1,11%	12,50%	0,61%	7,09%
febrero-12	135.112.231,4	25.115.766,4	20,15%	18,59%	1,10%	12,44%	0,26%	3,09%
marzo-12	134.099.703,1	24.839.130,0	19,94%	18,52%	1,10%	12,39%	0,35%	4,17%
abril-12	133.082.871,5	24.505.817,9	19,73%	18,41%	1,09%	12,35%	0,59%	6,83%
mayo-12	132.061.718,4	24.257.625,0	19,52%	18,37%	1,09%	12,29%	0,25%	2,93%
junio-12	131.036.225,4	23.955.207,3	19,32%	18,28%	1,08%	12,25%	0,47%	5,54%
julio-12	130.063.386,4	23.679.833,1	19,12%	18,21%	1,08%	12,21%	0,41%	4,81%
agosto-12	129.086.412,9	23.395.664,5	18,92%	18,12%	1,08%	12,17%	0,45%	5,29%
septiembre-12	128.105.287,2	23.171.600,9	18,72%	18,09%	1,07%	12,11%	0,20%	2,36%
octubre-12	127.119.991,7	22.937.845,1	18,52%	18,04%	1,06%	12,05%	0,24%	2,86%
noviembre-12	126.130.508,7	22.711.275,6	18,33%	18,01%	1,06%	12,00%	0,21%	2,50%
diciembre-12	125.136.820,4	22.409.282,2	18,14%	17,91%	1,06%	11,96%	0,55%	6,36%
enero-13	124.210.241,9	22.167.015,9	17,95%	17,85%	1,05%	11,92%	0,34%	4,04%
febrero-13	123.279.725,4	21.890.813,7	17,76%	17,76%	1,05%	11,88%	0,50%	5,84%
marzo-13	122.345.254,3	21.597.147,4	17,57%	17,65%	1,05%	11,85%	0,59%	6,83%
abril-13	121.406.811,6	21.273.431,40	17,39%	17,52%	1,04%	11,83%	0,74%	8,50%
mayo-13	120.464.380,6	21.038.408,5	17,20%	17,46%	1,04%	11,78%	0,33%	3,90%

UCI 5

DEAL 265.000.000
 MEZZ. DECLINN 8,00%
 MEZZ. STOPS DECLINN 1,00%
 VIDA RESIDUAL DESDE 08/05/2013

					0,27		0,27
FECHA	PRINCIPAL AVAILABLE	SENIOR NOTES	MEZZANIE NOTES	SERIE A PRINCIPAL	VIDA MEDIA	SERIE B PRINCIPAL	VIDA MEDIA
		253.000.000,00	12.000.000,00				
08/07/1999	0,00	253.000.000,00	12.000.000,00	0,00	0,00	0,00	0,00
08/08/1999	0,00	253.000.000,00	12.000.000,00	0,00	0,00	0,00	0,00
08/09/1999	0,00	253.000.000,00	12.000.000,00	0,00	0,00	0,00	0,00
08/10/1999	0,00	253.000.000,00	12.000.000,00	0,00	0,00	0,00	0,00
08/11/1999	16.693.731,90	253.000.000,00	12.000.000,00	16.693.731,90	-82.300.098.277,85	0,00	0,00
08/12/1999	0,00	236.306.268,10	12.000.000,00	0,00	0,00	0,00	0,00
08/01/2000	0,00	236.306.268,10	12.000.000,00	0,00	0,00	0,00	0,00
08/02/2000	9.553.411,13	236.306.268,10	12.000.000,00	9.553.411,13	-46.219.403.053,30	0,00	0,00
08/03/2000	0,00	226.752.856,97	12.000.000,00	0,00	0,00	0,00	0,00
08/04/2000	0,00	226.752.856,97	12.000.000,00	0,00	0,00	0,00	0,00
08/05/2000	9.220.824,40	226.752.856,97	12.000.000,00	9.220.824,40	-43.780.474.261,06	0,00	0,00
08/06/2000	0,00	217.532.032,56	12.000.000,00	0,00	0,00	0,00	0,00
08/07/2000	0,00	217.532.032,56	12.000.000,00	0,00	0,00	0,00	0,00
08/08/2000	8.900.068,22	217.532.032,56	12.000.000,00	8.900.068,22	-41.438.717.616,13	0,00	0,00
08/09/2000	0,00	208.631.964,35	12.000.000,00	0,00	0,00	0,00	0,00
08/10/2000	0,00	208.631.964,35	12.000.000,00	0,00	0,00	0,00	0,00
08/11/2000	8.590.067,97	208.631.964,35	12.000.000,00	8.590.067,97	-39.205.070.205,41	0,00	0,00
08/12/2000	0,00	200.041.896,38	12.000.000,00	0,00	0,00	0,00	0,00
08/01/2001	0,00	200.041.896,38	12.000.000,00	0,00	0,00	0,00	0,00
08/02/2001	8.289.774,76	200.041.896,38	12.000.000,00	8.289.774,76	-37.071.872.747,53	0,00	0,00
08/03/2001	0,00	191.752.121,62	12.000.000,00	0,00	0,00	0,00	0,00
08/04/2001	0,00	191.752.121,62	12.000.000,00	0,00	0,00	0,00	0,00
08/05/2001	7.999.799,14	191.752.121,62	12.000.000,00	7.999.799,14	-35.063.119.618,72	0,00	0,00
08/06/2001	0,00	183.752.322,48	12.000.000,00	0,00	0,00	0,00	0,00
08/07/2001	0,00	183.752.322,48	12.000.000,00	0,00	0,00	0,00	0,00
08/08/2001	7.719.560,48	183.752.322,48	12.000.000,00	7.719.560,48	-33.124.634.012,34	0,00	0,00
08/09/2001	0,00	176.032.762,00	12.000.000,00	0,00	0,00	0,00	0,00
08/10/2001	0,00	176.032.762,00	12.000.000,00	0,00	0,00	0,00	0,00
08/11/2001	7.448.743,50	176.032.762,00	12.000.000,00	7.448.743,50	-31.277.273.953,65	0,00	0,00
08/12/2001	0,00	168.584.018,50	12.000.000,00	0,00	0,00	0,00	0,00
08/01/2002	0,00	168.584.018,50	12.000.000,00	0,00	0,00	0,00	0,00
08/02/2002	7.186.274,42	168.584.018,50	12.000.000,00	7.186.274,42	-29.514.029.041,35	0,00	0,00
08/03/2002	0,00	161.397.744,08	12.000.000,00	0,00	0,00	0,00	0,00
08/04/2002	0,00	161.397.744,08	12.000.000,00	0,00	0,00	0,00	0,00
08/05/2002	6.932.938,02	161.397.744,08	12.000.000,00	6.932.938,02	-27.856.544.963,38	0,00	0,00
08/06/2002	0,00	154.464.806,06	12.000.000,00	0,00	0,00	0,00	0,00
08/07/2002	0,00	154.464.806,06	12.000.000,00	0,00	0,00	0,00	0,00
08/08/2002	6.686.291,18	154.464.806,06	12.000.000,00	6.521.736,73	-25.604.338.392,00	164.554,45	-646.040.783,69
08/09/2002	0,00	147.943.069,33	11.835.445,55	0,00	0,00	0,00	0,00
08/10/2002	0,00	147.943.069,33	11.835.445,55	0,00	0,00	0,00	0,00
08/11/2002	6.448.985,87	147.943.069,33	11.835.445,55	5.971.283,21	-22.893.899.821,81	477.702,66	-1.831.511.985,75
08/12/2002	0,00	141.971.786,13	11.357.742,89	0,00	0,00	0,00	0,00
08/01/2003	0,00	141.971.786,13	11.357.742,89	0,00	0,00	0,00	0,00
08/02/2003	6.220.158,83	141.971.786,13	11.357.742,89	5.759.406,32	-21.551.698.456,91	460.752,51	-1.724.135.876,55
08/03/2003	0,00	136.212.379,80	10.896.990,38	0,00	0,00	0,00	0,00

FECHA	PRINCIPAL AVAILABLE	SENIOR NOTES	MEZZANIE NOTES	SERIE A PRINCIPAL	VIDA MEDIA	SERIE B PRINCIPAL	VIDA MEDIA
08/04/2003	0,00	136.212.379,80	10.896.990,38	0,00	0,00	0,00	0,00
08/05/2003	5.999.230,02	136.212.379,80	10.896.990,38	5.554.842,61	-20.291.840.058,09	444.387,41	-1.623.347.204,65
08/06/2003	0,00	130.657.537,19	10.452.602,98	0,00	0,00	0,00	0,00
08/07/2003	0,00	130.657.537,19	10.452.602,98	0,00	0,00	0,00	0,00
08/08/2003	5.783.474,05	130.657.537,19	10.452.602,98	5.355.068,57	-19.069.399.162,97	428.405,49	-1.525.551.933,04
08/09/2003	0,00	125.302.468,63	10.024.197,49	0,00	0,00	0,00	0,00
08/10/2003	0,00	125.302.468,63	10.024.197,49	0,00	0,00	0,00	0,00
08/11/2003	5.576.233,56	125.302.468,63	10.024.197,49	5.163.179,23	-17.911.068.737,60	413.054,34	-1.432.885.499,01
08/12/2003	0,00	120.139.289,40	9.611.143,15	0,00	0,00	0,00	0,00
08/01/2004	0,00	120.139.289,40	9.611.143,15	0,00	0,00	0,00	0,00
08/02/2004	5.376.252,61	120.139.289,40	9.611.143,15	4.978.011,68	-16.810.745.429,31	398.240,93	-1.344.859.634,34
08/03/2004	0,00	115.161.277,72	9.212.902,22	0,00	0,00	0,00	0,00
08/04/2004	0,00	115.161.277,72	9.212.902,22	0,00	0,00	0,00	0,00
08/05/2004	5.183.449,51	115.161.277,72	9.212.902,22	4.799.490,28	-15.775.924.558,31	383.959,22	-1.262.073.964,66
08/06/2004	0,00	110.361.787,44	8.828.943,00	0,00	0,00	0,00	0,00
08/07/2004	0,00	110.361.787,44	8.828.943,00	0,00	0,00	0,00	0,00
08/08/2004	4.992.872,10	110.361.787,44	8.828.943,00	4.623.029,72	-14.770.579.959,36	369.842,38	-1.181.646.396,75
08/09/2004	0,00	105.738.757,72	8.459.100,62	0,00	0,00	0,00	0,00
08/10/2004	0,00	105.738.757,72	8.459.100,62	0,00	0,00	0,00	0,00
08/11/2004	4.811.176,23	105.738.757,72	8.459.100,62	4.454.792,80	-13.823.222.065,24	356.383,42	-1.105.857.765,22
08/12/2004	0,00	101.283.964,92	8.102.717,19	0,00	0,00	0,00	0,00
08/01/2005	0,00	101.283.964,92	8.102.717,19	0,00	0,00	0,00	0,00
08/02/2005	4.634.662,64	101.283.964,92	8.102.717,19	4.291.354,29	-12.921.267.779,04	343.308,34	-1.033.701.422,32
08/03/2005	0,00	96.992.610,62	7.759.408,85	0,00	0,00	0,00	0,00
08/04/2005	0,00	96.992.610,62	7.759.408,85	0,00	0,00	0,00	0,00
08/05/2005	4.465.809,64	96.992.610,62	7.759.408,85	4.135.008,92	-12.082.496.073,79	330.800,71	-966.599.685,90
08/06/2005	0,00	92.857.601,70	7.428.608,14	0,00	0,00	0,00	0,00
08/07/2005	0,00	92.857.601,70	7.428.608,14	0,00	0,00	0,00	0,00
08/08/2005	4.298.020,32	92.857.601,70	7.428.608,14	3.979.648,45	-11.262.405.102,20	318.371,88	-900.992.408,18
08/09/2005	0,00	88.877.953,25	7.110.236,26	0,00	0,00	0,00	0,00
08/10/2005	0,00	88.877.953,25	7.110.236,26	0,00	0,00	0,00	0,00
08/11/2005	4.139.188,29	88.877.953,25	7.110.236,26	3.832.581,75	-10.493.608.833,38	306.606,54	-839.488.706,67
08/12/2005	0,00	85.045.371,50	6.803.629,72	0,00	0,00	0,00	0,00
08/01/2006	0,00	85.045.371,50	6.803.629,72	0,00	0,00	0,00	0,00
08/02/2006	3.986.403,21	85.045.371,50	6.803.629,72	3.691.114,09	-9.766.687.871,80	295.289,13	-781.335.029,74
08/03/2006	0,00	81.354.257,42	6.508.340,59	0,00	0,00	0,00	0,00
08/04/2006	0,00	81.354.257,42	6.508.340,59	0,00	0,00	0,00	0,00
08/05/2006	3.840.054,73	81.354.257,42	6.508.340,59	3.555.606,23	-9.091.685.138,58	284.448,50	-727.334.811,09
08/06/2006	0,00	77.798.651,18	6.223.892,09	0,00	0,00	0,00	0,00
08/07/2006	0,00	77.798.651,18	6.223.892,09	0,00	0,00	0,00	0,00
08/08/2006	3.696.563,30	77.798.651,18	6.223.892,09	3.422.743,79	-8.437.063.448,56	273.819,50	-674.965.075,89
08/09/2006	0,00	74.375.907,39	5.950.072,59	0,00	0,00	0,00	0,00
08/10/2006	0,00	74.375.907,39	5.950.072,59	0,00	0,00	0,00	0,00
08/11/2006	3.559.671,34	74.375.907,39	5.950.072,59	3.295.991,98	-7.821.388.970,69	263.679,36	-625.711.117,66
08/12/2006	0,00	71.079.915,41	5.686.393,23	0,00	0,00	0,00	0,00
08/01/2007	0,00	71.079.915,41	5.686.393,23	0,00	0,00	0,00	0,00
08/02/2007	3.425.821,57	71.079.915,41	5.686.393,23	3.172.057,01	-7.235.462.046,41	253.764,56	-578.836.963,71
08/03/2007	0,00	67.907.858,40	5.432.628,67	0,00	0,00	0,00	0,00
08/04/2007	0,00	67.907.858,40	5.432.628,67	0,00	0,00	0,00	0,00
08/05/2007	3.298.224,47	67.907.858,40	5.432.628,67	3.053.911,55	-6.694.174.108,29	244.312,92	-535.533.928,66
08/06/2007	0,00	64.853.946,85	5.188.315,75	0,00	0,00	0,00	0,00
08/07/2007	0,00	64.853.946,85	5.188.315,75	0,00	0,00	0,00	0,00
08/08/2007	3.169.762,25	64.853.946,85	5.188.315,75	2.934.965,05	-6.163.426.598,49	234.797,20	-493.074.127,88
08/09/2007	0,00	61.918.981,81	4.953.518,54	0,00	0,00	0,00	0,00
08/10/2007	0,00	61.918.981,81	4.953.518,54	0,00	0,00	0,00	0,00
08/11/2007	3.049.267,84	61.918.981,81	4.953.518,54	2.823.396,15	-5.669.379.466,29	225.871,69	-453.550.357,30
08/12/2007	0,00	59.095.585,66	4.727.646,85	0,00	0,00	0,00	0,00
08/01/2008	0,00	59.095.585,66	4.727.646,85	0,00	0,00	0,00	0,00

FECHA	PRINCIPAL AVAILABLE	SENIOR NOTES	MEZZANIE NOTES	SERIE A PRINCIPAL	VIDA MEDIA	SERIE B PRINCIPAL	VIDA MEDIA
08/02/2008	2.923.969,11	59.095.585,66	4.727.646,85	2.707.378,81	-5.187.337.798,93	216.590,30	-414.987.023,91
08/03/2008	0,00	56.388.206,85	4.511.056,55	0,00	0,00	0,00	0,00
08/04/2008	0,00	56.388.206,85	4.511.056,55	0,00	0,00	0,00	0,00
08/05/2008	2.809.432,15	56.388.206,85	4.511.056,55	2.601.326,06	-4.750.021.387,77	208.106,08	-380.001.711,02
08/06/2008	0,00	53.786.880,79	4.302.950,46	0,00	0,00	0,00	0,00
08/07/2008	0,00	53.786.880,79	4.302.950,46	0,00	0,00	0,00	0,00
08/08/2008	2.696.956,45	53.786.880,79	4.302.950,46	2.497.181,89	-4.330.113.403,59	199.774,55	-346.409.072,29
08/09/2008	0,00	51.289.698,89	4.103.175,91	0,00	0,00	0,00	0,00
08/10/2008	0,00	51.289.698,89	4.103.175,91	0,00	0,00	0,00	0,00
08/11/2008	2.592.514,23	51.289.698,89	4.103.175,91	2.400.476,13	-3.941.581.812,73	192.038,09	-315.326.545,02
08/12/2008	0,00	48.889.222,76	3.911.137,82	0,00	0,00	0,00	0,00
08/01/2009	0,00	48.889.222,76	3.911.137,82	0,00	0,00	0,00	0,00
08/02/2009	2.491.165,57	48.889.222,76	3.911.137,82	2.306.634,79	-3.575.283.926,72	184.530,78	-286.022.714,14
08/03/2009	0,00	46.582.587,97	3.726.607,04	0,00	0,00	0,00	0,00
08/04/2009	0,00	46.582.587,97	3.726.607,04	0,00	0,00	0,00	0,00
08/05/2009	2.395.616,46	46.582.587,97	3.726.607,04	2.218.163,39	-3.240.736.712,75	177.453,07	-259.258.937,02
08/06/2009	0,00	44.364.424,58	3.549.153,97	0,00	0,00	0,00	0,00
08/07/2009	0,00	44.364.424,58	3.549.153,97	0,00	0,00	0,00	0,00
08/08/2009	2.298.762,72	44.364.424,58	3.549.153,97	2.128.484,00	-2.913.894.600,94	170.278,72	-233.111.568,08
08/09/2009	0,00	42.235.940,57	3.378.875,25	0,00	0,00	0,00	0,00
08/10/2009	0,00	42.235.940,57	3.378.875,25	0,00	0,00	0,00	0,00
08/11/2009	2.208.807,08	42.235.940,57	3.378.875,25	2.045.191,74	-2.611.709.856,01	163.615,34	-208.936.788,48
08/12/2009	0,00	40.190.748,83	3.215.259,91	0,00	0,00	0,00	0,00
08/01/2010	0,00	40.190.748,83	3.215.259,91	0,00	0,00	0,00	0,00
08/02/2010	2.118.062,05	40.190.748,83	3.215.259,91	1.961.168,56	-2.323.984.746,24	156.893,48	-185.918.779,70
08/03/2010	0,00	38.229.580,27	3.058.366,42	0,00	0,00	0,00	0,00
08/04/2010	0,00	38.229.580,27	3.058.366,42	0,00	0,00	0,00	0,00
08/05/2010	2.034.258,89	38.229.580,27	3.058.366,42	1.883.573,04	-2.064.396.055,68	150.685,84	-165.151.684,45
08/06/2010	0,00	36.346.007,22	2.907.680,58	0,00	0,00	0,00	0,00
08/07/2010	0,00	36.346.007,22	2.907.680,58	0,00	0,00	0,00	0,00
08/08/2010	1.944.985,96	36.346.007,22	2.907.680,58	1.687.305,38	-1.694.054.606,33	257.680,58	-258.711.300,25
08/09/2010	0,00	34.658.701,84	2.650.000,00	0,00	0,00	0,00	0,00
08/10/2010	0,00	34.658.701,84	2.650.000,00	0,00	0,00	0,00	0,00
08/11/2010	1.865.095,29	34.658.701,84	2.650.000,00	1.865.095,29	-1.700.966.908,76	0,00	0,00
08/12/2010	0,00	32.793.606,54	2.650.000,00	0,00	0,00	0,00	0,00
08/01/2011	0,00	32.793.606,54	2.650.000,00	0,00	0,00	0,00	0,00
08/02/2011	1.786.315,09	32.793.606,54	2.650.000,00	1.786.315,09	-1.464.778.377,35	0,00	0,00
08/03/2011	0,00	31.007.291,45	2.650.000,00	0,00	0,00	0,00	0,00
08/04/2011	0,00	31.007.291,45	2.650.000,00	0,00	0,00	0,00	0,00
08/05/2011	1.714.248,26	31.007.291,45	2.650.000,00	1.714.248,26	-1.253.115.479,49	0,00	0,00
08/06/2011	0,00	29.293.043,19	2.650.000,00	0,00	0,00	0,00	0,00
08/07/2011	0,00	29.293.043,19	2.650.000,00	0,00	0,00	0,00	0,00
08/08/2011	1.639.728,82	29.293.043,19	2.650.000,00	1.639.728,82	-1.047.786.715,59	0,00	0,00
08/09/2011	0,00	27.653.314,37	2.650.000,00	0,00	0,00	0,00	0,00
08/10/2011	0,00	27.653.314,37	2.650.000,00	0,00	0,00	0,00	0,00
08/11/2011	1.572.377,52	27.653.314,37	2.650.000,00	1.572.377,52	-860.090.504,65	0,00	0,00
08/12/2011	0,00	26.080.936,85	2.650.000,00	0,00	0,00	0,00	0,00
08/01/2012	0,00	26.080.936,85	2.650.000,00	0,00	0,00	0,00	0,00
08/02/2012	1.504.610,83	26.080.936,85	2.650.000,00	1.504.610,83	-684.597.929,01	0,00	0,00
08/03/2012	0,00	24.576.326,01	2.650.000,00	0,00	0,00	0,00	0,00
08/04/2012	0,00	24.576.326,01	2.650.000,00	0,00	0,00	0,00	0,00
08/05/2012	1.442.920,09	24.576.326,01	2.650.000,00	1.442.920,09	-526.665.833,05	0,00	0,00
08/06/2012	0,00	23.133.405,92	2.650.000,00	0,00	0,00	0,00	0,00
08/07/2012	0,00	23.133.405,92	2.650.000,00	0,00	0,00	0,00	0,00
08/08/2012	1.365.251,14	23.133.405,92	2.650.000,00	1.365.251,14	-372.713.562,29	0,00	0,00
08/09/2012	0,00	21.768.154,78	2.650.000,00	0,00	0,00	0,00	0,00
08/10/2012	0,00	21.768.154,78	2.650.000,00	0,00	0,00	0,00	0,00
08/11/2012	1.301.689,62	21.768.154,78	2.650.000,00	1.301.689,62	-235.605.821,69	0,00	0,00

FECHA	PRINCIPAL AVAILABLE	SENIOR NOTES	MEZZANIE NOTES	SERIE A PRINCIPAL	VIDA MEDIA	SERIE B PRINCIPAL	VIDA MEDIA
08/12/2012	0,00	20.466.465,16	2.650.000,00	0,00	0,00	0,00	0,00
08/01/2013	0,00	20.466.465,16	2.650.000,00	0,00	0,00	0,00	0,00
08/02/2013	1.225.651,51	20.466.465,16	2.650.000,00	1.225.651,51	-109.082.984,11	0,00	0,00
11/03/2013	0,00	19.240.813,65	2.650.000,00	0,00	0,00	0,00	0,00
11/04/2013	0,00	19.240.813,65	2.650.000,00	0,00	0,00	0,00	0,00
12/05/2013	1.165.654,93	19.240.813,65	2.650.000,00	1.165.654,93	4.662.619,71	0,00	0,00
12/06/2013	0,00	18.075.158,72	2.650.000,00	0,00	0,00	0,00	0,00
13/07/2013	0,00	18.075.158,72	2.650.000,00	0,00	0,00	0,00	0,00
13/08/2013	20.725.158,72	18.075.158,72	2.650.000,00	18.075.158,72	1.753.290.396,03	2.650.000,00	257.050.000,00