



FONDO DE TITULIZACIÓN HIPOTECARIA HIPOTEBANSA VII

Francisco Fortes Clavero
Analyst
Santander de Titulización
Ciudad Grupo Santander
Ed. Encinar 28660 Boadilla del Monte
ffortes@gruposantander.com
Tel: +34 91 289 32 90



FONDO DE TITULIZACION HIPOTECARIA : HIPOTEBANSA 7

I. DATA OF THE FUND

Constitution Date	May 5th 1998.	Paying Agent	Banco Santander	
Disbursement Date	May 8th 1998.	Negotiation Market	AIAF	
Final Date of Redemption	December 18th 2027.	Rating Agencies	S&P Moody's España	
Gestora	Santander de Titulización	Calification	Inicial	Actual
MP's Seller	Banco Santander	Class A	AAA/Aaa	AAA/Aaa
SWAP Counterparty	Banco Santander	Class B	A/A2	A/A2

II. SECURITIES ISSUED CHARGED TO THE FUND: SECURITISATION BONDS

CLASS PRIORITY	NUMBER OF BONDS	NOMINAL			
			INITIAL	CURRENT	%Cur/Ini
Class A		Nominal per Bond	150.253,03	18.806,34 €	
(ISIN=ES0338659008)	2.055	Total Nominal	308.769.968,63	38.647.028,70 €	12,52%
Class B		Nominal per Bond	150.253,03	67.801,81 €	
(ISIN=ES0338659016)	57	Total Nominal	8.564.422,49	3.864.703,17 €	45,13%

REDEMPTION AND INTEREST OF THE BONDS			
	Current		Next
Current Redemption Date	18/03/2008	Next Coupon Date	18/06/2008
Principal accrued per Bond and not paid	0	Interest Rate	Serie A- 4,8337% Serie B- 5,2139%
Bullet	NO		
Class A Redemption	1.612,78 €	Gross Interest	Serie A- 229,13 €
Class B Redemption	5.814,51 €	Next Coupon Date	Serie B- 891,04 €
Class A Gross Interest	263,08 €	Net Interest	Serie A- 187,89 €
Class B Gross Interest	1.018,24 €	Next Coupon Date	Serie B- 730,66 €

III. ASSET PURCHASED BY THE FUND: MORTGAGES PARTICIPATIONS

MORTGAGES PARTICIPATION	ISSUE DATE	CURRENT DATE
Number of loans	5.555	1.648
Credit Rights Outstanding Balance to be amortised	317.334.470,71 €	42.511.732,41 €
Credit Rights Outstanding Balance per loan to be amortised	57.125,92 €	25.795,95 €
Rate Interest	5,82%	5,23%

PREPAYMENT RATE	CURRENT SITUATION
Monthly Single Rate	29,91%
Average Monthly Single Rate	12,57%
Constant Prepayment Rate from Constitution	11,31%



**FONDO DE TITULIZACIÓN HIPOTECARIA
HIPOTEBANSA VII**

QUARTERLY BTH'S PAYOUT REPORT

Report date: March 18th, 2007

BONDS PRINCIPAL	
PREVIOUS BALANCE:	46.157.421,84 €
PRINCIPAL AMORTISED:	3.645.689,97 €
OUTSTANDING BALANCE:	42.511.731,87 €
% OF INITIAL BALANCE:	13,40%
PRINCIPAL ACCRUED NOT PAID:	0,00

DATA	
Determination Date	March 11, 2008
Payment Date	March 18, 2008
Last Payment Date	December 18, 2007
Num of Days (Act/360)	91
3 Months Libor(%)	4,61750%
Next Payment Date	June 18, 2008

ACUMULATIVE INTEREST PAID TO	
BTH'S HOLDERS AS OF PREVIOUS PAYMENT DATE:	58.176.197,09 €
INTEREST PAID ON December 18th, 2007	598.669,08 €
CUMULATIVE INTEREST PAID TO BTH'S HOLDERS UP TO DATE:	58.774.866,17 €

RESIDUAL LIFE (YEARS)		
	Initial	March 18, 2008
Class A	5,6	1,28
Class B	11	1,33



**FONDO DE TITULIZACIÓN HIPOTECARIA
HIPOTEBANSA VII**

QUARTERLY COLLATERAL REPORT

Report date: March 18th, 2007

MP'S PRINCIPAL	
PREVIOUS BALANCE:	46.157.429,51 €
PRINCIPAL AMORTISED:	3.645.697,10 €
OUTSTANDING BALANCE:	42.511.732,41 €
NUMBER OF LOANS:	1.648
LTV	32,90%

INTEREST	
INTEREST RECEIVED DURING RELEVANT PERIOD:	580.024,63
INTEREST ACCRUED DURING RELEVANT PERIOD:	577.015,47

MP'S IN ARREARS					
MP'S IN ARREARS	UP TO 30 DAYS	30 TO 60 DAYS	60 TO 90 DAYS	90 TO 180 DAYS	OVER 180 DAYS
PRINCIPAL BALANCE IN ARREARS:	89,25 €	1.667,96 €	1.230,72 €	444,10 €	0,00 €
INTEREST ACCRUED ON MP'S IN ARREARS:	205,43 €	1.329,30 €	919,01 €	364,31 €	0,00 €
OUTSTANDING BALANCE:	0,00 €	126.719,00 €	172.245,05 €	99.601,58 €	50.088,65 €
NUMBER OF LOANS:	1	4	4	2	1
% OF OUTSTANDING BALANCE	0,00%	0,30%	0,41%	0,23%	0,12%

This Report does not include loans in arrears from 0 to 15 days, as it is considered a technical arrear with a high percentage of recovery.

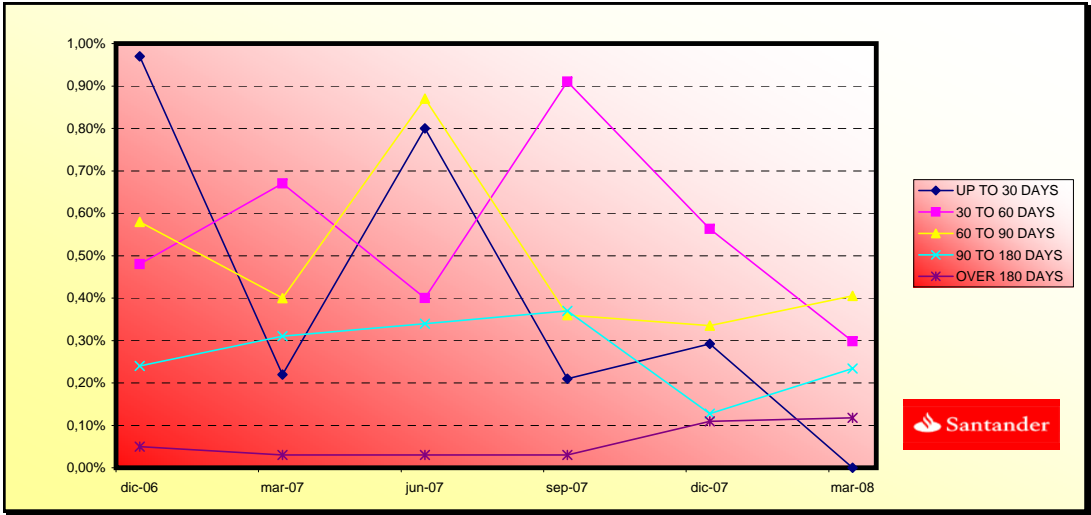
TRANSITORY PROPERTY	
OUTSTANDING BALANCE:	0,00 €
NUMBER OF TRANSITORY PROPERTIES:	0



**FONDO DE TITULIZACION HIPOTECARIA
HIPOTEBANSA VII**

Report date: March 18th, 2007

ARREARS PERFORMANCE						
	11/12/2006	11/03/2007	11/06/2007	11/09/2007	11/12/2007	11/03/2008
UP TO 30 DAYS	0,97%	0,22%	0,80%	0,21%	0,29%	0,00%
30 TO 60 DAYS	0,48%	0,67%	0,40%	0,91%	0,56%	0,30%
60 TO 90 DAYS	0,58%	0,40%	0,87%	0,36%	0,33%	0,41%
90 TO 180 DAYS	0,24%	0,31%	0,34%	0,37%	0,13%	0,23%
OVER 180 DAYS	0,05%	0,03%	0,03%	0,03%	0,11%	0,12%





**FONDO DE TITULIZACIÓN HIPOTECARIA
HIPOTEBANSA VII**

QUARTERLY REPORT - ALLOCATION OF CASH

Report date: March 18th, 2007

TOTAL CASH RECEIVED END OF PERIOD:		4.270.052,22 €
a) CASH RECEIVED - PRINCIPAL		
1. AMORTIZATION OF MP'S:		3.645.697,10 €
b) CASH RECEIVED - INTEREST		
1. INTEREST RECEIVED FROM MP'S:		580.024,63 €
2. INTEREST RECEIVED UNDER GIC:		44.330,49 €
c) CONTENTIUS COLLECTION		0,00 €
d) OTHERS		0,00 €

TREASURY ACCOUNT STATEMENT		1.541.542,47 €
a) RELATED TO THE PRINCIPAL RESERVE FUND		
1. PREVIOUS BALANCE:		572.352,13 €
2. PERIOD UTILIZATION:		-45.206,65 €
3. OUTSTANDING BALANCE:		527.145,48 €
b) RELATED TO THE SECONDARY RESERVE FUND		
1. PREVIOUS PERIOD RETENCION:		1.033.354,61 €
2. PERIOD UTILIZATION:		-18.957,62 €
3. OUTSTANDING BALANCE:		1.014.396,99 €
c) WITHOLDING ON BTH'S INTEREST TO BE PAID		0,00 €

TOTAL CASH PAID END OF PERIOD:		4.270.052,22 €
1. CURRENT EXPENSES:		14.512,28 €
2. NET INTEREST UNDER CLASS A SWAP:		-59.070,75 €
3. INTEREST PAID TO BTH'S A HOLDERS:		540.629,40 €
4. AMORTISATION OF BTH'S A AND B:		3.645.689,97 €
5. NET INTEREST UNDER CLASS B SWAP:		-9.884,57 €
6. INTEREST PAID TO BTH'S B HOLDERS:		58.039,68 €
7. INTEREST PAID ON SUBORDINATED LOAN:		18.154,87 €
8. REPAYMENT OF SUBORDINATED LOAN:		64.164,27 €
9. FEE IN FAVOUR OF SANTANDER		61.981,33 €
10. UTILIZATIONS OF PRINCIPAL AND SECONDARY RESERVE FUND:		-64.164,27 €



**FONDO DE TITULIZACIÓN HIPOTECARIA
HIPOTEBANSA VII**

CREDIT ENHANCEMENT AND SUBORDINATED LOAN

Report date: March 18th, 2007

CREDIT ENHANCEMENT		
CONCEPTS	08/05/1998	March 18, 2008
SUBORDINATED ISSUE	2,70%	9,09%
PRINCIPAL RESERVE FUND	3.934.946,45 (1,24%)	527145,48(1,24%)
SECONDARY RESERVE FUND	2.443.474,81 (0,77%)	1014396,99(2,39%)
EXCESS SPREAD	0,65%	0,65%

SUBORDINATED LOAN		
CONCEPTS	08/05/1998	March 18, 2008
TOTAL OUTSTANDING	7.458.560 €	1.543.319 €
INTEREST RATE	5,22	4,58



FONDO DE TITULIZACIÓN HIPOTECARIA
HIPOTEBANSA VII

TRIGGERS

Report date: March 18th, 2007

CLASS B REDEMPTION	
IF 1) IS HIGHER THAN 2) CLASS B IS NOT AMORTISED	
1) MP'S IN ARREARS OVER 90 DAYS	149.690,23 €
2) 7% MP'S OUTSTANDING BALANCE	2.975.821,27 €

CLASS B IS AMORTISED

TASAS DE PREPAGO - HIPOTEBANSA VII

March 18th 2008

1000

Fecha	Balance antes de prepago 166,386	Balance Real	1,00% Permanencia Vector de Prepago	a final de mes	Mortalidad mensual media	Tasa Cte. Prepago 11,15%	Mortalidad mensual	Tasa Cte. Prepago 12,57%	Balance después de prepago	
1	317.334,39		100,00%	100,00%					317.334,39	
2	1-jun-98	316.122,28	312.222,65	99,00%	98,77%	1,23%	13,84%	1,23%	13,84%	312.974,94
3	1-jul-98	314.904,28	309.267,47	98,02%	98,21%	0,90%	10,27%	0,56%	6,55%	308.665,08
4	1-ago-98	313.680,38	306.826,46	97,04%	97,81%	0,73%	8,46%	0,40%	4,72%	304.404,29
5	1-sep-98	312.450,54	304.371,89	96,08%	97,41%	0,65%	7,56%	0,41%	4,81%	300.192,03
6	1-oct-98	311.214,74	302.323,25	95,12%	97,14%	0,58%	6,72%	0,28%	3,29%	296.027,81
7	1-nov-98	309.972,94	299.911,08	94,17%	96,75%	0,55%	6,39%	0,40%	4,70%	291.911,10
8	1-dic-98	308.725,13	297.141,48	93,24%	96,25%	0,54%	6,35%	0,52%	6,10%	287.841,40
9	1-ene-99	307.471,25	292.560,21	92,31%	95,15%	0,62%	7,19%	1,14%	12,86%	283.818,22
10	1-feb-99	306.211,30	289.384,09	91,39%	94,50%	0,63%	7,26%	0,68%	7,85%	279.841,06
11	1-mar-99	304.945,24	286.556,32	90,48%	93,97%	0,62%	7,19%	0,57%	6,59%	275.909,44
12	1-abr-99	303.673,04	283.632,30	89,58%	93,40%	0,62%	7,18%	0,61%	7,03%	272.022,86
13	1-may-99	302.394,66	280.833,20	88,69%	92,87%	0,61%	7,13%	0,57%	6,61%	268.180,85
14	1-jun-99	301.110,09	278.037,96	87,80%	92,34%	0,61%	7,09%	0,57%	6,66%	264.382,93
15	1-jul-99	299.824,60	274.221,59	86,93%	91,46%	0,64%	7,37%	0,95%	10,82%	260.633,26
16	1-ago-99	298.532,87	271.294,76	86,06%	90,88%	0,64%	7,37%	0,64%	7,41%	256.926,67
17	1-sep-99	297.234,87	268.789,28	85,21%	90,43%	0,63%	7,27%	0,49%	5,73%	253.262,72
18	1-oct-99	295.930,58	265.786,98	84,36%	89,81%	0,63%	7,30%	0,68%	7,87%	249.640,95
19	1-nov-99	294.619,96	263.044,15	83,52%	89,28%	0,63%	7,28%	0,59%	6,87%	246.060,91
20	1-dic-99	293.302,99	260.845,13	82,69%	88,93%	0,62%	7,14%	0,39%	4,59%	242.522,15
21	1-ene-00	291.979,63	257.110,89	81,86%	88,06%	0,63%	7,35%	0,98%	11,20%	239.024,24
22	1-feb-00	290.649,85	254.178,48	81,05%	87,45%	0,64%	7,38%	0,69%	7,95%	235.566,74
23	1-mar-00	289.313,62	250.965,85	80,24%	86,75%	0,64%	7,46%	0,81%	9,28%	232.149,21
24	1-abr-00	287.970,91	248.126,73	79,44%	86,16%	0,65%	7,48%	0,67%	7,75%	228.771,24
25	1-may-00	286.621,69	245.508,94	78,65%	85,66%	0,64%	7,45%	0,59%	6,85%	225.432,40
26	1-jun-00	285.265,93	242.403,43	77,87%	84,97%	0,65%	7,52%	0,80%	9,14%	222.132,27
27	1-jul-00	283.905,24	239.449,93	77,09%	84,34%	0,65%	7,56%	0,74%	8,58%	218.871,70
28	1-ago-00	282.537,95	236.088,70	76,33%	83,56%	0,66%	7,67%	0,93%	10,57%	215.649,01
29	1-sep-00	281.164,03	233.850,44	75,57%	83,17%	0,66%	7,59%	0,46%	5,43%	212.463,78
30	1-oct-00	279.783,45	232.034,08	74,81%	82,93%	0,64%	7,45%	0,29%	3,39%	209.315,62
31	1-nov-00	278.396,17	229.434,03	74,07%	82,41%	0,64%	7,45%	0,63%	7,28%	206.204,12
32	1-dic-00	277.002,16	226.582,61	73,33%	81,80%	0,65%	7,48%	0,75%	8,59%	203.128,90
33	1-ene-01	275.607,96	222.932,14	72,60%	80,89%	0,66%	7,65%	1,11%	12,57%	200.094,33
34	1-feb-01	274.206,99	219.534,18	71,88%	80,06%	0,67%	7,77%	1,02%	11,59%	197.095,19
35	1-mar-01	272.799,23	217.354,07	71,16%	79,68%	0,67%	7,71%	0,48%	5,63%	194.131,10
36	1-abr-01	271.384,64	215.264,54	70,45%	79,32%	0,66%	7,64%	0,45%	5,21%	191.201,68
37	1-may-01	269.963,19	212.793,97	69,75%	78,82%	0,66%	7,63%	0,63%	7,27%	188.306,56
38	1-jun-01	268.534,84	210.160,96	69,06%	78,26%	0,66%	7,64%	0,71%	8,22%	185.445,38
39	1-jul-01	267.103,73	206.617,54	68,37%	77,35%	0,67%	7,79%	1,16%	13,06%	182.620,61
40	1-ago-01	265.665,67	203.489,25	67,69%	76,60%	0,68%	7,88%	0,98%	11,16%	179.829,01
41	1-sep-01	264.220,64	201.109,50	67,02%	76,11%	0,68%	7,86%	0,63%	7,29%	177.070,22
42	1-oct-01	262.768,60	198.301,75	66,35%	75,47%	0,68%	7,91%	0,85%	9,75%	174.343,89
43	1-nov-01	261.309,52	195.608,81	65,69%	74,86%	0,69%	7,94%	0,81%	9,27%	171.649,67
44	1-dic-01	259.843,36	191.134,46	65,03%	73,56%	0,71%	8,21%	1,74%	18,95%	168.987,21
45	1-ene-02	258.372,98	187.120,26	64,39%	72,42%	0,73%	8,42%	1,54%	17,02%	166.358,02
46	1-feb-02	256.895,45	184.751,94	63,75%	71,92%	0,73%	8,42%	0,70%	8,06%	163.759,90
47	1-mar-02	255.410,77	182.557,20	63,11%	71,48%	0,73%	8,39%	0,61%	7,12%	161.192,49
48	1-abr-02	253.918,88	179.971,44	62,48%	70,88%	0,73%	8,41%	0,84%	9,60%	158.655,48

49	1-may-02	252.419,76	176.336,40	61,86%	69,86%	0,74%	8,58%	1,44%	15,95%	156.148,53
50	1-jun-02	250.913,37	173.988,49	61,24%	69,34%	0,74%	8,58%	0,74%	8,52%	153.671,32
51	1-jul-02	249.422,52	171.096,97	60,64%	68,60%	0,75%	8,65%	1,07%	12,15%	151.237,38
52	1-ago-02	247.924,45	168.568,76	60,03%	67,99%	0,75%	8,68%	0,88%	10,09%	148.832,34
53	1-sep-02	246.419,11	166.492,14	59,43%	67,56%	0,75%	8,65%	0,63%	7,29%	146.455,88
54	1-oct-02	244.906,48	164.305,86	58,84%	67,09%	0,75%	8,64%	0,70%	8,12%	144.107,69
55	1-nov-02	243.386,50	161.468,21	58,26%	66,34%	0,76%	8,72%	1,11%	12,57%	141.787,47
56	1-dic-02	241.859,15	159.106,94	57,68%	65,78%	0,76%	8,73%	0,84%	9,63%	139.494,91
57	1-ene-03	240.353,67	155.706,01	57,10%	64,78%	0,77%	8,88%	1,52%	16,84%	137.246,43
58	1-feb-03	238.840,88	152.790,97	56,53%	63,97%	0,78%	8,98%	1,25%	14,02%	135.024,77
59	1-mar-03	237.320,76	150.531,76	55,97%	63,43%	0,78%	8,99%	0,85%	9,71%	132.829,63
60	1-abr-03	235.793,26	147.402,95	55,41%	62,51%	0,79%	9,11%	1,44%	16,02%	130.660,74
61	1-may-03	234.258,35	145.843,55	54,86%	62,26%	0,79%	9,04%	0,41%	4,81%	128.517,80
62	1-jun-03	232.716,00	143.415,81	54,32%	61,63%	0,79%	9,08%	1,01%	11,50%	126.400,53
63	1-jul-03	231.173,68	140.776,78	53,77%	60,90%	0,80%	9,15%	1,19%	13,33%	124.312,70
64	1-ago-03	229.623,87	138.084,06	53,24%	60,13%	0,80%	9,23%	1,25%	14,02%	122.249,93
65	1-sep-03	228.066,55	136.106,00	52,71%	59,68%	0,80%	9,23%	0,76%	8,74%	120.211,95
66	1-oct-03	226.501,67	133.328,14	52,18%	58,86%	0,81%	9,32%	1,36%	15,20%	118.198,49
67	1-nov-03	224.929,20	130.390,00	51,66%	57,97%	0,82%	9,44%	1,52%	16,79%	116.209,29
68	1-dic-03	223.349,11	128.106,15	51,15%	57,36%	0,83%	9,48%	1,06%	11,97%	114.244,08
69	1-ene-04	221.776,00	125.050,70	50,64%	56,39%	0,84%	9,62%	1,69%	18,52%	112.310,02
70	1-feb-04	220.195,26	122.770,18	50,14%	55,76%	0,84%	9,66%	1,12%	12,63%	110.399,31
71	1-mar-04	218.606,86	119.921,86	49,64%	54,86%	0,85%	9,78%	1,61%	17,70%	108.511,72
72	1-abr-04	217.010,75	117.299,60	49,14%	54,05%	0,86%	9,88%	1,47%	16,25%	106.646,99
73	1-may-04	215.406,89	114.855,01	48,65%	53,32%	0,87%	9,95%	1,36%	15,10%	104.804,86
74	1-jun-04	213.795,27	112.937,01	48,17%	52,82%	0,87%	9,96%	0,93%	10,59%	102.985,09
75	1-jul-04	212.190,44	110.672,98	47,69%	52,16%	0,88%	10,02%	1,26%	14,15%	101.194,42
76	1-ago-04	210.577,83	108.618,50	47,22%	51,58%	0,88%	10,05%	1,10%	12,48%	99.425,52
77	1-sep-04	208.957,40	103.166,13	46,75%	49,37%	0,92%	10,55%	4,28%	40,86%	97.678,16
78	1-oct-04	207.329,11	100.677,46	46,28%	48,56%	0,93%	10,65%	1,65%	18,06%	95.952,09
79	1-nov-04	205.692,93	98.712,53	45,82%	47,99%	0,94%	10,68%	1,17%	13,19%	94.247,10
80	1-dic-04	204.048,80	97.263,01	45,36%	47,67%	0,93%	10,64%	0,67%	7,80%	92.562,94
81	1-ene-05	202.418,62	94.675,40	44,91%	46,77%	0,95%	10,77%	1,88%	20,33%	90.909,24
82	1-feb-05	200.780,54	92.943,33	44,46%	46,29%	0,95%	10,78%	1,03%	11,67%	89.275,78
83	1-mar-05	199.134,51	91.236,87	44,02%	45,82%	0,95%	10,79%	1,02%	11,63%	87.662,34
84	1-abr-05	197.480,50	89.707,36	43,58%	45,43%	0,95%	10,78%	0,85%	9,77%	86.068,69
85	1-may-05	195.818,46	88.634,09	43,15%	45,26%	0,94%	10,71%	0,36%	4,21%	84.494,63
86	1-jun-05	194.148,37	86.557,54	42,72%	44,58%	0,95%	10,78%	1,50%	16,61%	82.939,93
87	1-jul-05	192.494,96	84.847,36	42,29%	44,08%	0,95%	10,80%	1,13%	12,79%	81.414,87
88	1-ago-05	190.833,54	82.992,78	41,87%	43,49%	0,95%	10,85%	1,33%	14,89%	79.908,61
89	1-sep-05	189.164,06	81.683,55	41,46%	43,18%	0,95%	10,82%	0,71%	8,18%	78.420,92
90	1-oct-05	187.486,48	80.232,57	41,04%	42,79%	0,95%	10,81%	0,90%	10,25%	76.951,62
91	1-nov-05	185.800,76	78.689,15	40,64%	42,35%	0,95%	10,82%	1,03%	11,72%	75.500,49
92	1-dic-05	184.106,87	76.928,26	40,23%	41,78%	0,95%	10,87%	1,34%	14,93%	74.067,34
93	1-ene-06	182.438,28	75.076,58	39,83%	41,15%	0,96%	10,94%	1,51%	16,73%	72.665,32
94	1-feb-06	180.761,60	73.544,22	39,43%	40,69%	0,96%	10,96%	1,13%	12,77%	71.280,68
95	1-mar-06	179.076,78	72.034,47	39,04%	40,23%	0,96%	10,98%	1,13%	12,76%	69.913,24
96	1-abr-06	177.383,79	70.524,81	38,65%	39,76%	0,97%	11,00%	1,16%	13,08%	68.562,80
97	1-may-06	175.682,60	69.027,88	38,27%	39,29%	0,97%	11,02%	1,17%	13,22%	67.229,18
98	1-jun-06	173.973,15	67.436,68	37,89%	38,76%	0,97%	11,06%	1,35%	15,00%	65.912,20
99	1-jul-06	172.260,89	66.106,53	37,51%	38,38%	0,97%	11,07%	1,00%	11,34%	64.613,72
100	1-ago-06	170.540,33	64.795,58	37,14%	37,99%	0,97%	11,07%	0,99%	11,30%	63.331,48
101	1-sep-06	168.811,43	63.776,10	36,77%	37,78%	0,97%	11,02%	0,57%	6,58%	62.065,29
102	1-oct-06	167.074,14	62.099,18	36,40%	37,17%	0,98%	11,09%	1,62%	17,77%	60.814,99
103	1-nov-06	165.328,43	60.931,65	36,04%	36,85%	0,97%	11,08%	0,84%	9,67%	59.580,40
104	1-dic-06	163.574,24	59.683,03	35,68%	36,49%	0,97%	11,08%	1,00%	11,35%	58.361,35
105	1-ene-07	161.817,92	58.049,61	35,32%	35,87%	0,98%	11,16%	1,68%	18,41%	57.159,90
106	1-feb-07	160.053,08	56.889,83	34,97%	35,54%	0,98%	11,15%	0,92%	10,47%	55.973,62
107	1-mar-07	158.279,68	55.797,82	34,62%	35,25%	0,98%	11,13%	0,82%	9,41%	54.802,32
108	1-abr-07	156.497,68	54.684,65	34,28%	34,94%	0,98%	11,12%	0,88%	10,05%	53.645,85
109	1-may-07	154.707,04	53.491,78	33,94%	34,58%	0,98%	11,13%	1,05%	11,89%	52.504,05
110	1-jun-07	152.907,71	52.023,03	33,60%	34,02%	0,98%	11,19%	1,60%	17,61%	51.376,74
111	1-jul-07	151.251,86	50.792,46	33,27%	33,58%	0,99%	11,22%	1,30%	14,50%	50.314,41
112	1-ago-07	149.587,97	49.684,76	32,93%	33,21%	0,99%	11,23%	1,09%	12,35%	49.265,49
113	1-sep-07	147.916,01	48.808,97	32,61%	33,00%	0,99%	11,20%	0,65%	7,55%	48.229,84
114	1-oct-07	146.235,95	48.342,08	32,28%	33,06%	0,97%	11,09%	-0,18%	-2,20%	47.207,31
115	1-nov-07	144.547,74	47.551,17	31,96%	32,90%	0,97%	11,04%	0,49%	5,69%	46.197,75
116	1-dic-07	142.851,34	46.517,43	31,64%	32,56%	0,97%	11,05%	1,01%	11,49%	45.201,03
117	1-ene-08	141.390,09	45.484,65	31,33%	32,17%	0,97%	11,07%	1,21%	13,59%	44.293,24
118	1-feb-08	139.921,76	44.256,3	31,02%	31,63%	0,98%	11,14%	1,68%	18,39%	43.396,85
119	1-mar-08	138.446,30	42.511,7	30,71%	30,71%	1,00%	11,31%	2,92%	29,91%	42.511,73

DEAL	317.334	3.173,3439
MEZZ. DECLINN	10,00%	
MEZZ. STOPS DECLINN	1,00%	
VIDA RESIDUAL DESDE	11-mar-08	

1,28 1,33

FECHA	PRINCIPAL AVAILABLE	SENIOR NOTES	MEZZANIE NOTES	SERIE A		SERIE B	
				PRINCIPAL	VIDA MEDIA	PRINCIPAL	VIDA MEDIA
			317.334,39				
11-jun-98		0	308.769,97	8.564,42			
11-jul-98	1	0	308.769,97	8.564,42	0	0	0
11-ago-98	1	0	308.769,97	8.564,42	0	0	0
11-sep-98	1	17.142	308.769,97	8.564,42	17.142	-59.466.842	0
11-oct-98	1	0	291.627,61	8.564,42	0	0	0
11-nov-98	1	0	291.627,61	8.564,42	0	0	0
11-dic-98	1	12.351	291.627,61	8.564,42	12.351	-41.720.425	0
11-ene-99	1	0	279.276,98	8.564,42	0	0	0
11-feb-99	1	0	279.276,98	8.564,42	0	0	0
11-mar-99	1	11.932	279.276,98	8.564,42	11.932	-39.232.303	0
11-abr-99	1	0	267.345,02	8.564,42	0	0	0
11-may-99	1	0	267.345,02	8.564,42	0	0	0
11-jun-99	1	11.527	267.345,02	8.564,42	11.527	-36.838.709	0
11-jul-99	1	0	255.818,51	8.564,42	0	0	0
11-ago-99	1	0	255.818,51	8.564,42	0	0	0
11-sep-99	1	11.120	255.818,51	8.564,42	11.120	-34.517.133	0
11-oct-99	1	0	244.698,30	8.564,42	0	0	0
11-nov-99	1	0	244.698,30	8.564,42	0	0	0
11-dic-99	1	10.741	244.698,30	8.564,42	10.741	-32.361.339	0
11-ene-00	1	0	233.957,73	8.564,42	0	0	0
11-feb-00	1	0	233.957,73	8.564,42	0	0	0
11-mar-00	1	10.373	233.957,73	8.564,42	10.373	-30.309.727	0
11-abr-00	1	0	223.584,79	8.564,42	0	0	0
11-may-00	1	0	223.584,79	8.564,42	0	0	0
11-jun-00	1	10.017	223.584,79	8.564,42	10.017	-28.347.962	0
11-jul-00	1	0	213.567,84	8.564,42	0	0	0
11-ago-00	1	0	213.567,84	8.564,42	0	0	0
11-sep-00	1	9.668	213.567,84	8.564,42	9.668	-26.472.304	0
11-oct-00	1	0	203.899,36	8.564,42	0	0	0
11-nov-00	1	0	203.899,36	8.564,42	0	0	0
11-dic-00	1	9.335	203.899,36	8.564,42	9.335	-24.709.439	0
11-ene-01	1	0	194.564,48	8.564,42	0	0	0
11-feb-01	1	0	194.564,48	8.564,42	0	0	0
11-mar-01	1	8.998	194.564,48	8.564,42	8.998	-23.007.385	0
11-abr-01	1	0	185.566,67	8.564,42	0	0	0
11-may-01	1	0	185.566,67	8.564,42	0	0	0
11-jun-01	1	8.686	185.566,67	8.564,42	8.686	-21.410.281	0
11-jul-01	1	0	176.880,96	8.564,42	0	0	0
11-ago-01	1	0	176.880,96	8.564,42	0	0	0
11-sep-01	1	8.375	176.880,96	8.564,42	8.375	-19.874.257	0
11-oct-01	1	0	168.505,80	8.564,42	0	0	0

DEAL 317.334 3.173,3439
 MEZZ. DECLINN 10,00%
 MEZZ. STOPS DECLINN 1,00%
 VIDA RESIDUAL DESDE 11-mar-08

1,28 1,33

		PRINCIPAL	SENIOR	MEZZANIE	SERIE A		SERIE B		
					PRINCIPAL	VIDA	PRINCIPAL	VIDA	
11-nov-01	1	0	168.505,80	8.564,42	0	0	0	0	0
11-dic-01	1	8.083	168.505,80	8.564,42	8.083	-18.445.441	0	0	0
11-ene-02	1	0	160.422,78	8.564,42	0	0	0	0	0
11-feb-02	1	0	160.422,78	8.564,42	0	0	0	0	0
11-mar-02	1	7.795	160.422,78	8.564,42	7.795	-17.086.014	0	0	0
11-abr-02	1	0	152.628,07	8.564,42	0	0	0	0	0
11-may-02	1	0	152.628,07	8.564,42	0	0	0	0	0
11-jun-02	1	7.521	152.628,07	8.564,42	7.521	-15.794.470	0	0	0
11-jul-02	1	0	145.106,89	8.564,42	0	0	0	0	0
11-ago-02	1	0	145.106,89	8.564,42	0	0	0	0	0
11-sep-02	1	7.215	145.106,89	8.564,42	7.215	-14.488.593	0	0	0
11-oct-02	1	0	137.891,46	8.564,42	0	0	0	0	0
11-nov-02	1	0	137.891,46	8.564,42	0	0	0	0	0
11-dic-02	1	6.961	137.891,46	8.564,42	6.961	-13.344.181	0	0	0
11-ene-03	1	0	130.930,49	8.564,42	0	0	0	0	0
11-feb-03	1	0	130.930,49	8.564,42	0	0	0	0	0
11-mar-03	1	6.665	130.930,49	8.564,42	6.665	-12.177.465	0	0	0
11-abr-03	1	0	124.265,21	8.564,42	0	0	0	0	0
11-may-03	1	0	124.265,21	8.564,42	0	0	0	0	0
11-jun-03	1	6.429	124.265,21	8.564,42	6.429	-11.154.486	0	0	0
11-jul-03	1	0	117.836,11	8.564,42	0	0	0	0	0
11-ago-03	1	0	117.836,11	8.564,42	0	0	0	0	0
11-sep-03	1	6.189	117.836,11	8.564,42	6.189	-10.167.839	0	0	0
11-oct-03	1	0	111.647,53	8.564,42	0	0	0	0	0
11-nov-03	1	0	111.647,53	8.564,42	0	0	0	0	0
11-dic-03	1	5.968	111.647,53	8.564,42	5.968	-9.262.140	0	0	0
11-ene-04	1	0	105.679,66	8.564,42	0	0	0	0	0
11-feb-04	1	0	105.679,66	8.564,42	0	0	0	0	0
11-mar-04	1	5.732	105.679,66	8.564,42	5.732	-8.374.972	0	0	0
11-abr-04	1	0	99.947,30	8.564,42	0	0	0	0	0
11-may-04	1	0	99.947,30	8.564,42	0	0	0	0	0
11-jun-04	1	5.527	99.947,30	8.564,42	5.527	-7.565.953	0	0	0
11-jul-04	1	0	94.420,67	8.564,42	0	0	0	0	0
11-ago-04	1	0	94.420,67	8.564,42	0	0	0	0	0
11-sep-04	1	5.307	94.420,67	8.564,42	5.307	-6.776.960	0	0	0
11-oct-04	1	0	89.113,73	8.564,42	0	0	0	0	0
11-nov-04	1	0	89.113,73	8.564,42	0	0	0	0	0
11-dic-04	1	5.115	89.113,73	8.564,42	4.966	-5.889.205	150	-177.437	0
11-ene-05	1	0	84.148,13	8.414,81	0	0	0	0	0
11-feb-05	1	0	84.148,13	8.414,81	0	0	0	0	0
11-mar-05	1	4.901	84.148,13	8.414,81	4.455	-4.882.786	446	-488.279	0
11-abr-05	1	0	79.693,03	7.969,30	0	0	0	0	0
11-may-05	1	0	79.693,03	7.969,30	0	0	0	0	0
11-jun-05	1	4.722	79.693,03	7.969,30	4.293	-4.310.270	429	-431.027	0
11-jul-05	1	0	75.399,94	7.539,99	0	0	0	0	0
11-ago-05	1	0	75.399,94	7.539,99	0	0	0	0	0
11-sep-05	1	4.519	75.399,94	7.539,99	4.108	-3.746.668	411	-374.667	0
11-oct-05	1	0	71.291,75	7.129,17	0	0	0	0	0
11-nov-05	1	0	71.291,75	7.129,17	0	0	0	0	0
11-dic-05	1	4.354	71.291,75	7.129,17	3.958	-3.249.358	396	-324.936	0
11-ene-06	1	0	67.333,94	6.733,39	0	0	0	0	0

DEAL 317.334 3.173,3439
 MEZZ. DECLINN 10,00%
 MEZZ. STOPS DECLINN 1,00%
 VIDA RESIDUAL DESDE 11-mar-08

1,28 1,33

		PRINCIPAL	SENIOR	MEZZANIE	SERIE A		SERIE B	
					PRINCIPAL	VIDA	PRINCIPAL	VIDA
11-feb-06	1	0	67.333,94	6.733,39	0	0	0	0
11-mar-06	1	4.154	67.333,94	6.733,39	3.776	-2.760.587	378	-276.059
11-abr-06	1	0	63.557,49	6.355,75	0	0	0	0
11-may-06	1	0	63.557,49	6.355,75	0	0	0	0
11-jun-06	1	4.001	63.557,49	6.355,75	3.637	-2.324.243	364	-232.424
11-jul-06	1	0	59.920,18	5.992,02	0	0	0	0
11-ago-06	1	0	59.920,18	5.992,02	0	0	0	0
11-sep-06	1	3.847	59.920,18	5.992,02	3.497	-1.912.960	350	-191.296
11-oct-06	1	0	56.422,99	5.642,30	0	0	0	0
11-nov-06	1	0	56.422,99	5.642,30	0	0	0	0
11-dic-06	1	3.704	56.422,99	5.642,30	3.367	-1.535.455	337	-153.545
11-ene-07	1	0	53.055,77	5.305,58	0	0	0	0
11-feb-07	1	0	53.055,77	5.305,58	0	0	0	0
11-mar-07	1	3.559	53.055,77	5.305,58	3.235	-1.184.184	324	-118.418
11-abr-07	1	0	49.820,29	4.982,03	0	0	0	0
11-may-07	1	0	49.820,29	4.982,03	0	0	0	0
11-jun-07	1	3.426	49.820,29	4.982,03	3.114	-853.280	311	-85.328
11-jul-07	1	0	46.706,13	4.670,61	0	0	0	0
11-ago-07	1	0	46.706,13	4.670,61	0	0	0	0
11-sep-07	1	3.147	46.706,13	4.670,61	2.861	-520.670	286	-52.067
11-oct-07	1	0	43.845,31	4.384,53	0	0	0	0
11-nov-07	1	0	43.845,31	4.384,53	0	0	0	0
11-dic-07	1	3.029	43.845,31	4.384,53	2.753	-250.565	275	-25.057
11-ene-08	1	0	41.091,84	4.109,18	0	0	0	0
11-feb-08	1	0	41.091,84	4.109,18	0	0	0	0
11-mar-08	1	2.689	41.091,84	4.109,18	2.445	0	244	0
11-abr-08	1	0	38.647,03	3.864,70	0	0	0	0
11-may-08	1	0	38.647,03	3.864,70	0	0	0	0
11-jun-08	1	2.589	38.647,03	3.864,70	2.354	216.531	235	21.653
11-jul-08	1	0	36.293,42	3.629,34	0	0	0	0
11-ago-08	1	0	36.293,42	3.629,34	0	0	0	0
11-sep-08	1	2.487	36.293,42	3.629,34	2.261	416.031	226	41.603
11-oct-08	1	0	34.032,38	3.403,24	0	0	0	0
11-nov-08	1	0	34.032,38	3.403,24	0	0	0	0
11-dic-08	1	2.393	34.032,38	3.403,24	2.176	598.374	218	59.837
11-ene-09	1	0	31.856,48	3.185,65	0	0	0	0
11-feb-09	1	0	31.856,48	3.185,65	0	0	0	0
11-mar-09	1	2.295	31.856,48	3.185,65	2.283	833.242	12	4.489
11-abr-09	1	0	29.573,62	3.173,35	0	0	0	0
11-may-09	1	0	29.573,62	3.173,35	0	0	0	0
11-jun-09	1	2.208	29.573,62	3.173,35	2.208	1.009.018	0	0
11-jul-09	1	0	27.365,70	3.173,35	0	0	0	0
11-ago-09	1	0	27.365,70	3.173,35	0	0	0	0
11-sep-09	1	30.539	27.365,70	3.173,35	27.366	15.023.772	3.173	1.742.168