



F.T.H. HIPOTEBANSA XI

FRANCISCO FORTES CLAVERO

ANALYST

SANTANDER DE TITULIZACION, S.G.F.T, S.A.

CIUDAD GRUPO SANTANDER

28660 BOADILLA DEL MONTE

ffortes@gruposantander.com

Tel: 912893290



NAME OF THE FUND:

F.T.H. HIPOTEBANSA XI

INFORMATION AT:

QUARTER/SEMESTER: November 17, 2014 - February 16, 2015 YEAR: 2015

Acting on behalf of Santander de Titulización S.G.F.T., S.A. as General Manager:	Signature:
IGNACIO ORTEGA GAVARA - GENERAL MANAGER	

I. DATA OF THE FUND

Constitution Date	November 26, 2002	Paying Agent	BANCO SANTANDER	
Disbursement Date	November 29, 2002	Negotiation Market	AIAF	
Final Date of Redemption	February 15, 2035	Ratings Agencies	MOODY'S ESPAÑA	
			STANDARD & POORS	
Management Company	SANTANDER DE TITULIZACION, S.G.F.T, S.A.	Rating	Initial	Current
Credit Rights 's Seller	BANCO SANTANDER	CLASS A	Aaa/AAA	OE/AA
		CLASS B	A2/A	ÓaGB-

II. SECURITIES ISSUED CHARGED TO THE FUND: SECURITISATION BONDS

CLASS PRIORITY ISIN CODE	NUM BONDS	NOMINAL			
			Initial	Current	%Act/In
CLASS A ES0338447008	10.408	Nominal per Bond	100.000,00	15.571,22	
		Total Nominal	1.040.800.000,00	162.065.257,76	15,57 %
CLASS B ES0338447016	212	Nominal per Bond	100.000,00	45.867,53	
		Total Nominal	21.200.000,00	9.723.916,36	45,87 %

REDEMPTION AND INTEREST OF THE BONDS					
Current			Next		
Payment Date of the Current Period February 16, 2015			Next Payment Date May 18, 2015		
	Redemption of the Bonds	Gross Interest	Interest Rate	Gross Interest Next Coupon	Net Interest Next Coupon
CLASS A	578,04 €	12,98 €	0,2880 %	11,34 €	9,07 €
CLASS B	1.702,71 €	63,49 €	0,4980 %	57,74 €	46,19 €
Accrued amortisation due not payed	0,00 €				
Scheduled Amortisation	NO				

III. ASSET PURCHASED BY THE FUND: CREDIT RIGHTS

CREDIT RIGHTS	ISSUE DATE	CURRENT DATE
Numbre of CR's	13.082	4.285
CR's Outstanding to be amortised	1.062.000.934,18	171.789.178,86
CR's Outstanding per Loan to be amortised	81.180,32	40.090,82
Interest Rate	4,46 %	1,53 %

PREPAYMENT RATE	CURRENT SITUATION
Monthly Single Rate	5,14 %
Average Monthly Single Rate	J,CF %
Constant Prepayment Rate from Constitution	9,07 %

CURRENT DELINQUENCY	Up to 1 month	From 1 to 6 months	Greater than 6 months
Debt Due (Principal + Interest)	6.020,74	32.426,70	0,00
Debt to be amortised	0,00	0,00	171.756.980,15
Total Debt	6.020,74	32.426,70	171.756.980,15

F.T.H. HIPOTEBANSA XI**QUARTERLY BONDS PAYOUT REPORT**

February 16, 2015

BONDS. PRINCIPAL	
Previous Balance	178.166.388,96 €
Principal Amortised	6.377.214,84 €
Outstanding Balance	171.789.174,12 €
% of Initial Balance	16,18%
Principal accrued and unpaid	0,00 €

INTEREST PAID	
CLASS A	135.095,84 €
CLASS B	13.459,88 €
Interest accrued and unpaid	0,00 €

DATA	
Determination Date	09/02/2015
Payment Date	16/02/2015
Last Payment Date	17/11/2014
Number of Days (Act/360)	91
Reference Interest Rate (%)	0,048%
Next Payment Date	18/05/2015

RESIDUAL LIFE (YEARS)		
	INITIAL	16/02/2015
CLASS A	6,7	2,2
CLASS B	12,8	2,4

F.T.H. HIPOTEBANSA XI

QUARTERLY COLLATERAL REPORT

February 16, 2015

PRINCIPAL	
Previous Balance	178.166.408,27 €
Principal Amortised	6.377.229,41 €
Outstanding Balance	171.789.178,86 €
Number of Credit Rights	4.285
LTV	34,50%

INTEREST	
Interest received during relevant period	662.812,47 €
Interest accrued during relevant period	673.315,83 €

PRINCIPAL BALANCE IN ARREARS					
	UP to 30 DAYS	30 to 60 DAYS	60 to 90 DAYS	90 to 180 DAYS	> 180 DAYS
Principal Balance in Arrears	5.277,33 €	8.216,99 €	15.638,07 €	3.066,32 €	0,00 €
Interest accrued on Credit Rights in Arrears	743,41 €	2.748,42 €	1.957,04 €	799,86 €	0,00 €
Outstanding Balance	973.720,53 €	1.284.875,66 €	617.268,39 €	162.483,03 €	1.227.190,90 €
Number of Credit Rights	25	18	12	4	29
% of Outstanding Balance	0,57%	0,75%	0,36%	0,09%	0,71%

(1) This report does not include loans in arrears from 1 to 15 days, as it is considered a technical arrear with a high percentage of recovery.

F.T.H. HIPOTEBANSA XI

QUARTERLY COLLATERAL REPORT

February 16, 2015

CONTENTIOUS / JUDICIAL	
Last balance	1.355.058,69 €
Difference in Actual Period	-94.427,37 €
Current balance	1.260.631,32 €
Contentious CR's number	30

TRANSITORY PROPERTIES	
Last balance	984.890,27 €
Difference in Actual Period	169.849,35 €
Current balance	1.154.732,31 €
Transitory properties CR's number	18

NET LOSS	
Last balance	199.532,33 €
Difference in Actual Period	23.131,40 €
Current balance	222.663,73 €

F.T.H. HIPOTEBANSA XI

QUARTERLY REPORT - ALLOCATION OF CASH

February 16, 2015

TOTAL CASH RECEIVED END OF PERIOD	6.927.811,98 €
CASH RECEIVED - PRINCIPAL	
Amortisation of Credit Rights	6.188.722,80 €
CASH RECEIVED - INTEREST	
Interest received from Credit Rights	662.812,47 €
Interest received under GIC	-4.091,36 €
CONTENTIOUS	7.689,43 €
INCOMES/EXPENSES OF TRANSTORY PROPERTIES	-6.039,80 €
RESERVE FUNDS	79.715,36 €
OTHERS	-996,92 €

TREASURY ACCOUNT STATEMENT	4.802.364,74 €
PRINCIPAL RESERVE FUND	
Previous Balance	1.781.664,08 €
Period utilization	-63.772,29 €
Outstanding Balance	1.717.891,79 €
PRINCIPAL RESERVE FUND	
Previous Balance	3.100.416,02 €
Period utilization	-15.943,07 €
Outstanding Balance	3.084.472,95 €
WITHHOLDING TAXES	0,00 €
ISSUE EXPENSES WITHHELD	0,00 €
OTHERS	0,00 €

TOTAL CASH PAID END OF PERIOD	6.927.811,98 €
ORDINARY EXPENSES	15.822,71 €
MANAGEMENT FEE	19.425,00 €
SWAP A COLLECTION	-135.109,51 €
SWAP A PAYMENT	397.501,10 €
SWAP B COLLECTION	-13.459,97 €
SWAP B PAYMENT	23.850,07 €
CLASS A INTEREST	135.095,84 €
CLASS A REDEMPTION	6.016.240,32 €
CLASS B REDEMPTION	360.974,52 €
CLASS B INTEREST	13.459,88 €
SUBORDINATED LOAN A INTEREST	11.421,44 €
SUBORDINATED LOAN B INTEREST	0,00 €
SUBORDINATED LOAN A REDEMPTION	79.715,36 €
SUBORDINATED LOAN B REDEMPTION	0,00 €
ADMINISTRATION FEE	2.875,22 €
VARIABLE FEE	0,00 €

F.T.H. HIPOTEBANSA XI

CREDIT ENHACEMENT AND SUBORDINATED LOAN

February 16, 2015

CREDIT ENHACEMENT		
CONCEPTS	INITIAL	February 16, 2015
SUBORDINATED ISSUE	2,00 %	5,66%
PRINCIPAL RESERVE FUND	10.620.000,00 € (1,00 %)	1.717.891,79 € 1,00%
SECONDARY RESERVE FUND	5.310.000,00 € (0,50 %)	3.084.472,95 € 1,80%

SUBORDINATED LOANS		
CONCEPTS	INITIAL	February 16, 2015
SUBORDINATED LOAN A		
Total Outstanding Subordinated Loan	17.045.178,00 €	4.804.216,20 €
Interest Rate	3,860 %	0,927%

F.T.H. HIPOTEBANSA XI

TRIGGERS OF THE MODEL

February 16, 2015

RESERVE FUND'S TRIGGERS	
IF 1) IS HIGHER THAN 2) RESERVE FUNDS WILL NOT BE REDUCED	
1) 99% PREVIOUS BTA BALANCE	176.384.725,07 €
2) CREDIT RIGHTS OUTSTANDING BALANCE (ARREARS < 90 DAYS) + CR'S REDEMPTION	176.588.227,73 €

RESERVE FUND HAS BEEN REDUCED

BOND'S TRIGGERS	
IF 1) IS HIGHER THAN 2) CLASS B IS NOT AMORTISED	
1) CREDIT RIGHTS IN ARREARS OVER 90 DAYS	1.389.673,93 €
2) 4% CREDIT RIGHTS OUTSTANDING BALANCE	6.871.567,15 €

CLASS B IS AMORTIZED

AGREEMENT	COUNTERPARTY	RATING AGENCY	MINIMUM RATING REQUIRED	CURRENT RATING
CUENTA TESORERÍA	BANCO SANTANDER	MOODYS	P-1 c/p	Baa1 l/p P-2 c/p
		S&P	A-1 c/p A l/p	BBB+ l/p A-2 c/p
SWAP	BANCO SANTANDER	MOODYS	A2 l/p P-1 c/p	Baa1 l/p P-2 c/p
		S&P	A- l/p	BBB+ l/p A-2 c/p

COUNTERPARTY DOES NOT HAVE THE MINIMUM RATING REQUIRED. TREASURY ACCOUNT HAS BEEN TRANSFERRED TO A COUNTERPARTY WITH MINIMUM RATING REQUIRED. SWAP DEPOSIT HAS BEEN DEPOSITED IN TREASURY ACCOUNT

F.T.H. HIPOTEBANSA XI

DEFINITIONS

February 16, 2015

DETERMINATION DATE Means the date in which the Gestora will carry out the necessary calculations, on behalf of the Fund, for the distribution of the available funds at this date, according with the Order of Priority of Payments.
All the information regarding the Assets (Outstading Balance of the Credit Rights, arrears' tables, transitory properties, stratiphication tables, etc.) are refered to this mentioned date.

NET LOSSES Those loans which the Originator considers that will not recover (net of recoveries).

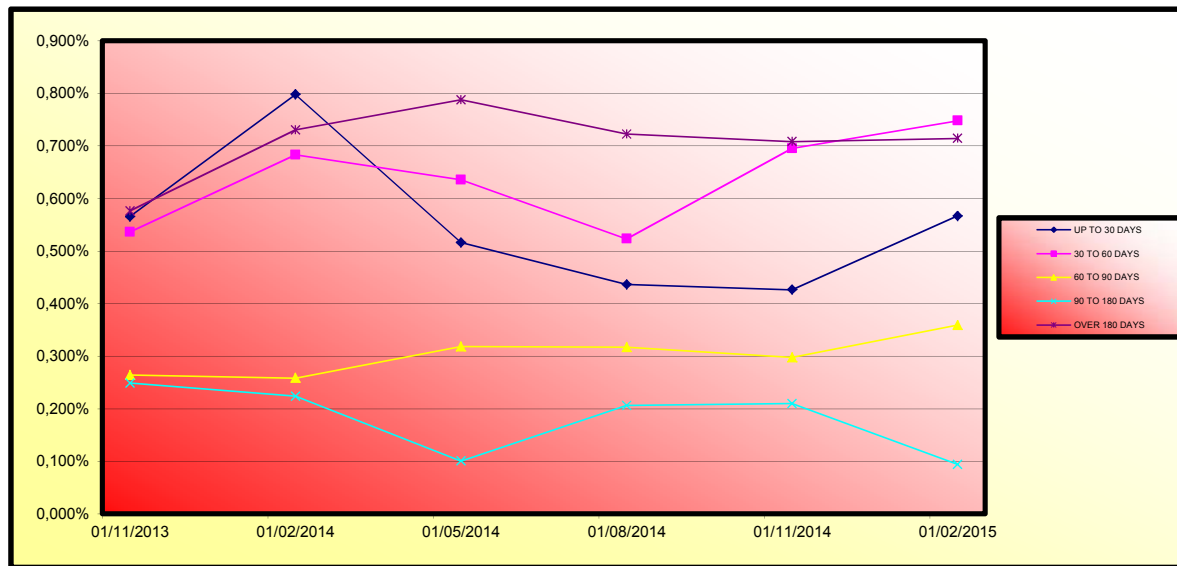
TRANSITORY PROPERTIES Those assets in the balance of the Fund as a consequence of a judicial or non-judicial process.

CONTENTIOUS / JUDICIAL Loans in which the Originator will take legal actions. This amount is included in the different buckets in arrears.

**FONDO DE TITULIZACIÓN DE ACTIVOS
HIPOTEBANSA 11**

Report date: February 16th 2015

ARREARS PERFORMANCE						
	08/11/2013	08/02/2014	08/05/2014	08/08/2014	07/11/2014	09/02/2015
UP TO 30 DAYS	0,566%	0,798%	0,516%	0,436%	0,426%	0,567%
30 TO 60 DAYS	0,536%	0,683%	0,636%	0,523%	0,695%	0,748%
60 TO 90 DAYS	0,264%	0,258%	0,318%	0,317%	0,298%	0,359%
90 TO 180 DAYS	0,249%	0,224%	0,101%	0,207%	0,210%	0,095%
OVER 180 DAYS	0,576%	0,730%	0,788%	0,723%	0,708%	0,714%



**FONDO DE TITULIZACIÓN DE ACTIVOS
HIPOTEBANSA 11**

LOAN TO VALUE

Report date: February 16th 2015

LTV				
	OUTS, BALANCE	% OUTSTANDING	NUMBER LOANS	% NUM LOANS
0-9,99	5.050.762,76 €	2,94%	580	13,39%
10-19,99	14.172.088,13 €	8,25%	727	16,78%
20-29,99	21.111.843,50 €	12,29%	562	12,97%
30-39,99	29.997.997,29 €	17,46%	719	16,60%
40-49,99	33.572.185,39 €	19,54%	692	15,97%
50-59,99	35.453.109,05 €	20,64%	569	13,13%
60-69,99	20.371.903,27 €	11,86%	303	6,99%
70-79,99	7.548.793,16 €	4,39%	117	2,70%
80-89,99	4.510.496,31 €	2,63%	63	1,45%

PREPAGOS - HIPOTEBANSA 11

15-feb-15

Fecha	Balance Teórico	Balance Real	0,79% Vector Prepago	Tasa Prepago Mensual desde Inicio	Tasa Prepago Anualizada desde Inicio	Tasa Prepago Mensual	Tasa Prepago Mensual Anualizada	Outstanding after prepayment	Principal Available
					9,21%				1.062.000.934,18
1	1.062.000.934,18		100,00%	100,00%				1.062.000.934,18	
2	1.059.170.325,97	1.057.044.700,19	99,21%	99,80%	0,20%	2,38%	0,20%	2,38%	1.057.044.700,2
3	1.056.330.372,16	1.048.809.339,04	98,43%	99,29%	0,36%	4,20%	0,51%	5,98%	1.048.809.339,0
4	1.053.479.859,47	1.037.938.978,94	97,65%	98,52%	0,49%	5,77%	0,77%	8,84%	1.037.938.978,9
5	1.050.618.748,66	1.030.003.541,32	96,88%	98,04%	0,49%	5,77%	0,49%	5,77%	1.030.003.541,3
6	1.047.747.000,34	1.020.972.745,34	96,11%	97,44%	0,52%	6,02%	0,61%	7,02%	1.020.972.745,3
7	1.044.864.574,97	1.010.816.263,76	95,36%	96,74%	0,55%	6,41%	0,72%	8,32%	1.010.816.263,8
8	1.041.971.432,87	1.003.440.878,07	94,60%	96,30%	0,54%	6,26%	0,45%	5,31%	1.003.440.878,1
9	1.039.067.682,10	993.186.004,40	93,86%	95,58%	0,56%	6,55%	0,75%	8,59%	993.186.004,4
10	1.036.153.135,33	982.097.638,62	93,12%	94,78%	0,59%	6,89%	0,84%	9,61%	982.097.638,6
11	1.033.227.752,45	975.159.555,45	92,38%	94,38%	0,58%	6,71%	0,43%	4,99%	975.159.555,5
12	1.030.291.493,18	966.431.750,97	91,65%	93,80%	0,58%	6,74%	0,61%	7,11%	966.431.751,0
13	1.027.344.317,10	953.436.130,22	90,93%	92,81%	0,62%	7,19%	1,06%	12,02%	953.436.130,2
14	1.024.386.183,63	944.508.540,63	90,21%	92,20%	0,62%	7,22%	0,65%	7,53%	944.508.540,6
15	1.021.417.800,39	930.185.073,01	89,50%	91,07%	0,67%	7,71%	1,23%	13,80%	930.185.073,0
16	1.018.438.380,94	921.831.922,03	88,79%	90,51%	0,66%	7,66%	0,61%	7,06%	921.831.922,0
17	1.015.447.884,27	907.539.469,11	88,09%	89,37%	0,70%	8,08%	1,26%	14,12%	907.539.469,1
18	1.012.446.269,20	895.504.918,67	87,39%	88,45%	0,72%	8,30%	1,03%	11,72%	895.504.918,7
19	1.009.433.494,41	887.418.518,82	86,70%	87,91%	0,71%	8,23%	0,61%	7,05%	887.418.518,8
20	1.006.409.518,43	876.263.237,75	86,02%	87,07%	0,73%	8,37%	0,96%	10,93%	876.263.237,8
21	1.003.377.044,29	867.495.065,22	85,34%	86,46%	0,72%	8,36%	0,70%	8,10%	867.495.065,2
22	1.000.333.295,73	857.633.882,55	84,67%	85,73%	0,73%	8,42%	0,84%	9,58%	857.633.882,6
23	997.278.230,87	804.308.410,78	84,00%	80,65%	0,97%	11,07%	5,93%	51,98%	804.308.410,8
24	994.211.807,63	795.545.591,13	83,34%	80,02%	0,96%	10,98%	0,78%	9,02%	795.545.591,1
25	991.133.983,79	782.598.464,39	82,68%	78,96%	0,98%	11,14%	1,32%	14,76%	782.598.464,4
26	988.044.717,00	770.977.781,30	82,03%	78,03%	0,99%	11,23%	1,18%	13,24%	770.977.781,3
27	984.948.536,41	754.651.271,17	81,38%	76,62%	1,02%	11,57%	1,81%	19,68%	754.651.271,2
28	981.840.844,62	742.323.934,82	80,74%	75,61%	1,03%	11,69%	1,32%	14,76%	742.323.934,8
29	978.721.598,87	731.960.780,33	80,10%	74,79%	1,03%	11,71%	1,08%	12,24%	731.960.780,3
30	975.590.756,20	718.984.542,85	79,47%	73,70%	1,05%	11,86%	1,46%	16,15%	718.984.542,9
31	972.448.273,51	706.885.021,02	78,84%	72,69%	1,06%	11,98%	1,37%	15,21%	706.885.021,0
32	969.294.107,55	689.240.977,47	78,22%	71,11%	1,09%	12,37%	2,18%	23,23%	689.240.977,5
33	966.131.551,58	678.185.756,46	77,60%	70,20%	1,10%	12,43%	1,28%	14,34%	678.185.756,5
34	962.957.237,72	666.214.919,67	76,99%	69,18%	1,11%	12,54%	1,44%	15,99%	666.214.919,7
35	959.771.122,28	658.165.638,87	76,38%	68,58%	1,10%	12,47%	0,88%	10,07%	658.165.638,9
36	956.573.161,40	648.651.369,26	75,78%	67,81%	1,10%	12,47%	1,12%	12,60%	648.651.369,3
37	953.363.311,04	638.242.081,65	75,18%	66,95%	1,11%	12,52%	1,27%	14,26%	638.242.081,7
38	950.141.527,02	627.954.600,79	74,58%	66,09%	1,11%	12,57%	1,28%	14,31%	627.954.600,8
39	946.909.556,71	616.446.413,36	74,00%	65,10%	1,12%	12,68%	1,50%	16,56%	616.446.413,4
40	943.665.570,52	605.695.422,90	73,41%	64,19%	1,13%	12,75%	1,41%	15,63%	605.695.422,9
41	940.409.523,79	594.529.487,85	72,83%	63,22%	1,14%	12,85%	1,50%	16,62%	594.529.487,9
42	937.141.371,71	584.960.675,74	72,26%	62,42%	1,14%	12,88%	1,27%	14,18%	584.960.675,7
43	933.861.069,29	575.086.536,35	71,69%	61,58%	1,15%	12,94%	1,34%	14,97%	575.086.536,4
44	930.568.571,35	565.932.803,00	71,12%	60,82%	1,15%	12,96%	1,24%	13,94%	565.932.803,0
45	927.272.799,87	558.118.316,87	70,56%	60,19%	1,15%	12,93%	1,03%	11,69%	558.118.316,9
46	923.964.775,39	550.497.713,95	70,00%	59,58%	1,14%	12,90%	1,01%	11,49%	550.497.714,0
47	920.644.452,37	542.920.794,56	69,45%	58,97%	1,14%	12,87%	1,02%	11,58%	542.920.794,6
48	917.311.785,10	536.549.647,93	68,90%	58,49%	1,13%	12,80%	0,81%	9,35%	536.549.647,9
49	913.966.727,70	529.463.736,52	68,36%	57,93%	1,13%	12,76%	0,96%	10,93%	529.463.736,5
50	910.609.234,12	520.643.753,84	67,82%	57,18%	1,13%	12,80%	1,30%	14,57%	520.643.753,8
51	907.242.586,08	512.492.911,52	67,28%	56,49%	1,14%	12,81%	1,20%	13,49%	512.492.911,5
52	903.863.421,61	505.142.636,37	66,75%	55,89%	1,13%	12,79%	1,07%	12,07%	505.142.636,4
53	900.471.694,20	498.780.135,48	66,22%	55,39%	1,13%	12,74%	0,89%	10,15%	498.780.135,5
54	897.067.357,15	490.788.190,07	65,70%	54,71%	1,13%	12,76%	1,23%	13,79%	490.788.190,1
55	893.650.363,60	485.583.354,72	65,18%	54,34%	1,12%	12,68%	0,68%	7,89%	485.583.354,7
56	890.220.666,50	479.137.057,63	64,67%	53,82%	1,12%	12,64%	0,95%	10,79%	479.137.057,6
57	886.836.366,45	471.982.288,71	64,16%	53,22%	1,12%	12,64%	1,12%	12,61%	471.982.288,7
58	883.439.484,37	465.857.195,81	63,65%	52,73%	1,12%	12,60%	0,92%	10,48%	465.857.195,8
59	880.029.973,50	461.998.838,58	63,15%	52,50%	1,10%	12,48%	0,44%	5,20%	461.998.838,6
60	876.607.786,89	458.046.611,10	62,65%	52,25%	1,09%	12,37%	0,47%	5,48%	458.046.611,1
61	873.172.877,43	452.371.234,64	62,16%	51,81%	1,09%	12,32%	0,85%	9,74%	452.371.234,6
62	869.725.197,85	448.356.935,35	61,66%	51,55%	1,08%	12,22%	0,49%	5,78%	448.356.935,4
63	866.268.177,14	439.408.095,80	61,18%	50,72%	1,09%	12,31%	1,60%	17,65%	439.408.095,8
64	862.798.304,13	432.865.132,35	60,70%	50,17%	1,09%	12,31%	1,09%	12,35%	432.865.132,4
65	859.315.531,03	428.713.233,91	60,22%	49,89%	1,08%	12,22%	0,56%	6,49%	428.713.233,9
66	855.819.809,91	423.809.725,84	59,74%	49,52%	1,08%	12,17%	0,74%	8,53%	423.809.725,8
67	852.311.092,64	417.767.295,59	59,27%	49,02%	1,07%	12,16%	1,02%	11,58%	417.767.295,6
68	848.789.330,93	414.119.779,42	58,80%	48,79%	1,07%	12,06%	0,46%	5,40%	414.119.779,4
69	845.278.456,53	408.387.262,86	58,34%	48,31%	1,06%	12,05%	0,97%	11,09%	408.387.262,9
70	841.754.529,66	399.894.858,15	57,88%	47,51%	1,07%	12,14%	1,67%	18,29%	399.894.858,2
71	838.217.501,81	397.104.484,05	57,42%	47,37%	1,06%	12,02%	0,28%	3,29%	397.104.484,1
72	834.667.324,30	392.635.300,03	56,97%	47,04%	1,06%	11,97%	0,70%	8,14%	392.635.300,0
73	831.103.948,24	388.690.866,11	56,52%	46,77%	1,05%	11,90%	0,58%	6,74%	388.690.866,1
74	827.527.324,58	385.413.737,73	56,07%	46,57%	1,04%	11,80%	0,41%	4,86%	385.413.737,7
75	823.941.709,31	379.887.693,57	55,63%	46,11%	1,04%	11,80%	1,00%	11,41%	379.887.693,6
76	820.342.763,79	376.132.280,53	55,19%	45,85%	1,03%	11,73%	0,55%	6,45%	376.132.280,5
77	816.730.438,47	373.184.766,62	54,75%	45,69%	1,03%	11,63%	0,34%	4,06%	373.184.766,6
78	813.104.683,62	370.712.910,40	54,32%	45,59%	1,01%	11,52%	0,22%	2,60%	370.712.910,4
79	809.465.449,34	366.289.849,16	53,89%	45,25%	1,01%	11,49%	0,75%	8,63%	366.289.849,2
80	805.812.685,52	362.559.930,03	53,47%	44,99%	1,01%	11,42%	0,57%	6,63%	362.559.930,0
81	802.186.527,76	357.724.978,07	53,04%	44,59%	1,00%	11,41%	0,89%	10,15%	357.724.978,1
82	798.546.889,06	353.824.448,77	52,63%	44,31%	1,00%	11,36%	0,64%	7,41%	353.824.448,8
83	794.893.719,32	350.570.091,65	52,21%	44,10%	0,99%	11,29%	0,46%	5,43%	350.570.091,7
84	791.226.968,25	347.229.237,07	51,80%	43,88%	0,99%	11,23%	0,49%	5,77%	347.229.237,1
85	787.546.585,37	340.966.922,50	51,39%	43,29%	0,99%	11,27%	1,34%	14,99%	340.966.922,5
86	783.852.520,02	337.271.256,12	50,98%	43,03%	0,99%	11,22%	0,62%	7,17%	337.271.256,1

87	1-ene-10	780.152.853,81	331.682.915,73	50,58%	42,52%	0,99%	11,25%	1,19%	13,39%	331.682.915,7	
88	1-feb-10	776.439.433,47	328.381.940,19	50,18%	42,29%	0,98%	11,19%	0,52%	6,08%	328.381.940,2	12.584.982,31
89	1-mar-10	772.712.207,86	324.299.710,78	49,79%	41,97%	0,98%	11,17%	0,77%	8,82%	324.299.710,8	
90	1-abr-10	768.971.125,68	320.856.666,58	49,39%	41,73%	0,98%	11,12%	0,58%	6,75%	320.856.666,6	
91	1-may-10	765.216.135,42	317.821.724,68	49,00%	41,53%	0,97%	11,06%	0,46%	5,38%	317.821.724,7	10.560.215,51
92	1-jun-10	761.447.185,41	315.309.819,68	48,62%	41,41%	0,96%	10,98%	0,30%	3,53%	315.309.819,7	
93	1-jul-10	757.737.575,21	312.506.764,97	48,23%	41,24%	0,96%	10,91%	0,40%	4,74%	312.506.765,0	
94	1-ago-10	754.014.173,91	307.861.260,43	47,85%	40,83%	0,96%	10,92%	1,00%	11,36%	307.861.260,4	9.960.464,25
95	1-sep-10	750.276.930,25	305.310.872,01	47,47%	40,69%	0,95%	10,84%	0,33%	3,94%	305.310.872,0	
96	1-oct-10	746.525.792,79	302.266.230,38	47,10%	40,49%	0,95%	10,79%	0,50%	5,83%	302.266.230,4	
97	1-nov-10	742.760.709,88	299.713.677,26	46,73%	40,35%	0,94%	10,72%	0,34%	4,03%	299.713.677,3	8.147.583,17
98	1-dic-10	738.981.629,70	296.591.158,42	46,36%	40,14%	0,94%	10,68%	0,54%	6,24%	296.591.158,4	
99	1-ene-11	735.193.927,19	291.262.819,72	45,99%	39,87%	0,94%	10,72%	1,29%	14,43%	291.262.819,7	
100	1-feb-11	731.392.143,34	288.900.230,44	45,63%	39,50%	0,93%	10,65%	0,30%	3,49%	288.900.230,4	10.813.446,82
101	1-mar-11	727.576.225,80	286.264.570,10	45,27%	39,34%	0,93%	10,59%	0,39%	4,61%	286.264.570,1	
102	1-abr-11	723.746.122,06	283.436.064,18	44,91%	39,16%	0,92%	10,54%	0,46%	5,43%	283.436.064,2	
103	1-may-11	719.901.779,38	280.960.059,59	44,56%	39,03%	0,92%	10,48%	0,34%	4,05%	280.960.059,6	7.940.170,85
104	1-jun-11	716.043.144,85	278.312.314,21	44,21%	38,87%	0,91%	10,43%	0,41%	4,79%	278.312.314,2	
105	1-jul-11	712.190.655,82	275.761.660,14	43,86%	38,72%	0,91%	10,37%	0,38%	4,47%	275.761.660,1	
106	1-ago-11	708.323.844,65	273.279.092,90	43,51%	38,58%	0,90%	10,31%	0,36%	4,23%	273.279.092,9	7.680.966,69
107	1-sep-11	704.442.658,13	270.935.369,97	43,17%	38,46%	0,90%	10,25%	0,31%	3,67%	270.935.370,0	
108	1-oct-11	700.547.042,80	268.556.921,92	42,83%	38,34%	0,89%	10,19%	0,33%	3,85%	268.556.921,9	
109	1-nov-11	696.636.945,06	266.425.568,69	42,49%	38,24%	0,89%	10,13%	0,24%	2,80%	266.425.568,7	6.853.524,21
110	1-dic-11	692.712.311,08	263.629.031,32	42,15%	38,06%	0,88%	10,09%	0,49%	5,71%	263.629.031,3	
111	1-ene-12	688.784.629,71	259.676.451,07	41,82%	37,70%	0,88%	10,10%	0,94%	10,69%	259.676.451,1	
112	1-feb-12	684.842.346,75	256.892.369,56	41,49%	37,51%	0,88%	10,06%	0,50%	5,87%	256.892.369,6	9.533.199,13
113	1-mar-12	680.885.407,92	253.949.065,00	41,16%	37,30%	0,88%	10,03%	0,57%	6,64%	253.949.065,0	
114	1-abr-12	676.913.758,75	251.104.281,26	40,84%	37,10%	0,87%	10,00%	0,54%	6,29%	251.104.281,3	
115	1-may-12	672.927.344,57	247.859.348,30	40,51%	36,83%	0,87%	9,98%	0,71%	8,17%	247.859.348,3	9.033.021,26
116	1-jun-12	668.926.110,50	244.993.940,46	40,19%	36,62%	0,87%	9,95%	0,56%	6,57%	244.993.940,5	
117	1-jul-12	665.347.651,79	242.336.402,87	39,88%	36,42%	0,87%	9,92%	0,55%	6,43%	242.336.402,9	
118	1-ago-12	661.755.889,43	239.852.008,79	39,56%	36,24%	0,86%	9,89%	0,49%	5,70%	239.852.008,8	8.007.339,51
119	1-sep-12	658.150.773,97	237.561.527,78	39,25%	36,10%	0,86%	9,84%	0,41%	4,84%	237.561.527,8	
120	1-oct-12	654.532.255,78	235.276.281,90	38,94%	35,94%	0,86%	9,80%	0,41%	4,86%	235.276.281,9	
121	1-nov-12	650.900.285,05	232.665.500,60	38,63%	35,75%	0,85%	9,78%	0,56%	6,49%	232.665.500,6	7.186.508,19
122	1-dic-12	647.254.811,77	229.563.429,83	38,33%	35,47%	0,85%	9,77%	0,78%	8,94%	229.563.429,8	
123	1-ene-13	643.606.678,16	226.412.789,50	38,03%	35,18%	0,85%	9,77%	0,81%	9,34%	226.412.789,5	
124	1-feb-13	639.944.981,93	224.148.004,03	37,73%	35,03%	0,85%	9,73%	0,43%	5,08%	224.148.004,0	8.517.496,57
125	1-mar-13	636.269.672,68	221.948.739,67	37,43%	34,88%	0,85%	9,69%	0,41%	4,80%	221.948.739,7	
126	1-abr-13	632.580.699,82	219.391.546,83	37,13%	34,68%	0,84%	9,67%	0,58%	6,69%	219.391.546,8	
127	1-may-13	628.878.012,55	217.174.140,11	36,84%	34,53%	0,84%	9,63%	0,43%	5,02%	217.174.140,1	6.973.863,92
128	1-jun-13	625.161.559,92	215.049.584,48	36,55%	34,40%	0,84%	9,59%	0,39%	4,58%	215.049.584,5	
129	1-jul-13	621.456.630,52	212.809.646,44	36,26%	34,24%	0,83%	9,56%	0,45%	5,29%	212.809.646,4	
130	1-ago-13	617.737.927,43	210.659.136,59	35,97%	34,10%	0,83%	9,52%	0,41%	4,86%	210.659.136,6	6.515.003,52
131	1-sep-13	614.005.399,43	208.912.559,65	35,69%	34,02%	0,83%	9,47%	0,23%	2,68%	208.912.559,7	
132	1-oct-13	610.258.995,15	206.556.591,52	35,41%	33,85%	0,82%	9,45%	0,52%	6,07%	206.556.591,5	
133	1-nov-13	606.498.663,03	204.578.485,37	35,13%	33,73%	0,82%	9,41%	0,34%	4,05%	204.578.485,4	6.080.651,22
134	1-dic-13	602.724.351,28	202.437.830,58	34,85%	33,59%	0,82%	9,37%	0,43%	5,00%	202.437.830,6	
135	1-ene-14	598.945.359,53	199.455.990,35	34,58%	33,30%	0,82%	9,38%	0,85%	9,75%	199.455.990,4	
136	1-feb-14	595.152.318,81	197.425.214,43	34,30%	33,17%	0,81%	9,34%	0,39%	4,55%	197.425.214,4	7.153.270,94
137	1-mar-14	591.345.176,91	194.082.513,37	34,03%	32,82%	0,82%	9,36%	1,06%	12,01%	194.082.513,4	
138	1-abr-14	587.523.881,41	191.766.394,14	33,76%	32,64%	0,81%	9,34%	0,55%	6,41%	191.766.394,1	
139	1-may-14	583.688.379,71	189.955.295,88	33,50%	32,54%	0,81%	9,30%	0,29%	3,47%	189.955.295,9	7.469.918,55
140	1-jun-14	579.838.619,01	187.970.954,96	33,23%	32,42%	0,81%	9,27%	0,39%	4,55%	187.970.955,0	
141	1-jul-14	576.249.599,09	184.376.022,73	32,97%	32,00%	0,81%	9,31%	1,30%	14,55%	184.376.022,7	
142	1-ago-14	572.647.236,25	183.915.580,70	32,71%	32,12%	0,80%	9,21%	-0,38%	-4,63%	183.915.580,7	6.039.715,18
143	1-sep-14	569.031.480,92	182.088.534,10	32,45%	32,00%	0,80%	9,18%	0,36%	4,29%	182.088.534,1	
144	1-oct-14	565.402.283,32	179.967.990,52	32,20%	31,83%	0,80%	9,16%	0,53%	6,18%	179.967.990,5	
145	1-nov-14	561.759.593,48	178.166.408,27	31,94%	31,72%	0,79%	9,13%	0,36%	4,23%	178.166.408,3	5.749.172,43
146	1-dic-14	558.103.361,25	176.557.932,40	31,69%	31,64%	0,79%	9,09%	0,25%	3,00%	176.557.932,4	
147	1-ene-15	554.443.005,38	173.697.923,48	31,44%	31,33%	0,79%	9,10%	0,97%	11,04%	173.697.923,5	
148	1-feb-15	550.769.041,47	171.789.178,86	31,19%	31,19%	0,79%	9,07%	0,44%	5,14%	171.789.178,9	6.377.229,41

1.062.000.000,00
6,00%
0,75%
15-feb-15

69285,54

VIDA RESIDUAL DESDE

2,20

2,40

FECHA	Principal disponible para la amortización	SERIE A	SERIE B	SERIE A		SERIE B	
				PRINCIPAL	VIDA MEDIA	PRINCIPAL	VIDA MEDIA
15-dic-02	0,00	1.040.800.000,00	21.200.000,00	0,00	0,00	0,00	0,00
15-ene-03	0,00	1.040.800.000,00	21.200.000,00	0,00	0,00	0,00	0,00
15-feb-03	24.061.955,24	1.040.800.000,00	21.200.000,00	24.061.955,24	-105.463.549.816,92	0,00	0,00
15-mar-03	0,00	1.016.738.044,76	21.200.000,00	0,00	0,00	0,00	0,00
15-abr-03	0,00	1.016.738.044,76	21.200.000,00	0,00	0,00	0,00	0,00
15-may-03	27.122.715,18	1.016.738.044,76	21.200.000,00	27.122.715,18	-116.464.938.982,92	0,00	0,00
15-jun-03	0,00	989.615.329,58	21.200.000,00	0,00	0,00	0,00	0,00
15-jul-03	0,00	989.615.329,58	21.200.000,00	0,00	0,00	0,00	0,00
15-ago-03	28.718.625,14	989.615.329,58	21.200.000,00	28.718.625,14	-120.675.662.838,28	0,00	0,00
15-sep-03	0,00	960.896.704,44	21.200.000,00	0,00	0,00	0,00	0,00
15-oct-03	0,00	960.896.704,44	21.200.000,00	0,00	0,00	0,00	0,00
15-nov-03	28.661.508,40	960.896.704,44	21.200.000,00	28.661.508,40	-117.798.799.524,00	0,00	0,00
15-dic-03	0,00	932.235.196,04	21.200.000,00	0,00	0,00	0,00	0,00
15-ene-04	0,00	932.235.196,04	21.200.000,00	0,00	0,00	0,00	0,00
15-feb-04	31.604.208,19	932.235.196,04	21.200.000,00	31.604.208,19	-126.985.708.507,42	0,00	0,00
15-mar-04	0,00	900.630.987,85	21.200.000,00	0,00	0,00	0,00	0,00
15-abr-04	0,00	900.630.987,85	21.200.000,00	0,00	0,00	0,00	0,00
15-may-04	34.413.403,21	900.630.987,85	21.200.000,00	34.413.403,21	-135.175.847.808,88	0,00	0,00
15-jun-04	0,00	866.217.584,64	21.200.000,00	0,00	0,00	0,00	0,00
15-jul-04	0,00	866.217.584,64	21.200.000,00	0,00	0,00	0,00	0,00
15-ago-04	29.784.636,27	866.217.584,64	21.200.000,00	29.784.636,27	-114.253.864.731,72	0,00	0,00
15-sep-04	0,00	836.432.948,37	21.200.000,00	0,00	0,00	0,00	0,00
15-oct-04	0,00	836.432.948,37	21.200.000,00	0,00	0,00	0,00	0,00
15-nov-04	75.035.418,16	836.432.948,37	21.200.000,00	75.035.418,16	-280.932.605.591,04	0,00	0,00
15-dic-04	0,00	761.397.530,21	21.200.000,00	0,00	0,00	0,00	0,00
15-ene-05	0,00	761.397.530,21	21.200.000,00	0,00	0,00	0,00	0,00
15-feb-05	40.274.529,57	761.397.530,21	21.200.000,00	40.274.529,57	-147.082.581.989,64	0,00	0,00
15-mar-05	0,00	721.123.000,64	21.200.000,00	0,00	0,00	0,00	0,00
15-abr-05	0,00	721.123.000,64	21.200.000,00	0,00	0,00	0,00	0,00
15-may-05	35.438.913,80	721.123.000,64	21.200.000,00	35.438.913,80	-126.268.849.869,40	0,00	0,00
15-jun-05	0,00	685.684.086,84	21.200.000,00	0,00	0,00	0,00	0,00
15-jul-05	0,00	685.684.086,84	21.200.000,00	0,00	0,00	0,00	0,00
15-ago-05	40.670.101,35	685.684.086,84	21.200.000,00	40.670.101,35	-141.165.921.785,85	0,00	0,00
15-sep-05	0,00	645.013.985,49	21.200.000,00	0,00	0,00	0,00	0,00
15-oct-05	0,00	645.013.985,49	21.200.000,00	0,00	0,00	0,00	0,00
15-nov-05	27.972.838,02	645.013.985,49	21.200.000,00	27.972.838,02	-94.520.219.669,58	0,00	0,00
15-dic-05	0,00	617.041.147,47	21.200.000,00	0,00	0,00	0,00	0,00
15-ene-06	0,00	617.041.147,47	21.200.000,00	0,00	0,00	0,00	0,00
15-feb-06	32.546.658,75	617.041.147,47	21.200.000,00	32.546.658,75	-106.980.867.311,25	0,00	0,00
15-mar-06	0,00	584.494.488,72	21.200.000,00	0,00	0,00	0,00	0,00
15-abr-06	0,00	584.494.488,72	21.200.000,00	0,00	0,00	0,00	0,00
15-may-06	30.608.886,55	584.494.488,72	21.200.000,00	30.608.886,55	-97.887.219.186,90	0,00	0,00
15-jun-06	0,00	553.885.602,17	21.200.000,00	0,00	0,00	0,00	0,00
15-jul-06	0,00	553.885.602,17	21.200.000,00	0,00	0,00	0,00	0,00
15-ago-06	24.588.822,40	553.885.602,17	21.200.000,00	24.588.822,40	-76.372.882.374,40	0,00	0,00
15-sep-06	0,00	529.296.779,77	21.200.000,00	0,00	0,00	0,00	0,00
15-oct-06	0,00	529.296.779,77	21.200.000,00	0,00	0,00	0,00	0,00
15-nov-06	21.033.977,43	529.296.779,77	21.200.000,00	21.033.977,43	-63.396.407.974,02	0,00	0,00
15-dic-06	0,00	508.262.802,34	21.200.000,00	0,00	0,00	0,00	0,00
15-ene-07	0,00	508.262.802,34	21.200.000,00	0,00	0,00	0,00	0,00
15-feb-07	24.321.100,15	508.262.802,34	21.200.000,00	24.321.100,15	-71.066.254.638,30	0,00	0,00
15-mar-07	0,00	483.941.702,19	21.200.000,00	0,00	0,00	0,00	0,00
15-abr-07	0,00	483.941.702,19	21.200.000,00	0,00	0,00	0,00	0,00
15-may-07	19.559.281,65	483.941.702,19	21.200.000,00	19.559.281,65	-55.411.444.914,45	0,00	0,00
15-jun-07	0,00	464.382.420,54	21.200.000,00	0,00	0,00	0,00	0,00
15-jul-07	0,00	464.382.420,54	21.200.000,00	0,00	0,00	0,00	0,00
15-ago-07	19.726.158,91	464.382.420,54	21.200.000,00	19.726.158,91	-54.069.401.572,31	0,00	0,00
15-sep-07	0,00	444.656.261,63	21.200.000,00	0,00	0,00	0,00	0,00
15-oct-07	0,00	444.656.261,63	21.200.000,00	0,00	0,00	0,00	0,00
15-nov-07	13.485.961,17	444.656.261,63	21.200.000,00	13.485.961,17	-35.724.311.139,33	0,00	0,00
15-dic-07	0,00	431.170.300,46	21.200.000,00	0,00	0,00	0,00	0,00
15-ene-08	0,00	431.170.300,46	21.200.000,00	0,00	0,00	0,00	0,00
15-feb-08	19.506.102,29	431.170.300,46	21.200.000,00	19.506.102,29	-49.877.103.555,53	0,00	0,00
15-mar-08	0,00	411.664.198,17	21.200.000,00	0,00	0,00	0,00	0,00
15-abr-08	0,00	411.664.198,17	21.200.000,00	0,00	0,00	0,00	0,00
15-may-08	15.097.836,76	411.664.198,17	21.200.000,00	15.097.836,76	-37.246.363.286,92	0,00	0,00
15-jun-08	0,00	396.566.361,41	21.200.000,00	0,00	0,00	0,00	0,00
15-jul-08	0,00	396.566.361,41	21.200.000,00	0,00	0,00	0,00	0,00
15-ago-08	17.872.437,44	396.566.361,41	21.200.000,00	17.872.437,44	-42.447.038.920,00	0,00	0,00
15-sep-08	0,00	378.693.923,97	21.200.000,00	0,00	0,00	0,00	0,00
15-oct-08	0,00	378.693.923,97	21.200.000,00	0,00	0,00	0,00	0,00
15-nov-08	11.203.992,04	378.693.923,97	21.200.000,00	11.203.992,04	-25.578.713.827,32	0,00	0,00
15-dic-08	0,00	367.489.931,93	21.200.000,00	0,00	0,00	0,00	0,00
15-ene-09	0,00	367.489.931,93	21.200.000,00	0,00	0,00	0,00	0,00
15-feb-09	12.558.585,58	367.489.931,93	21.200.000,00	12.558.585,58	-27.515.861.005,78	0,00	0,00
15-mar-09	0,00	354.931.346,35	21.200.000,00	0,00	0,00	0,00	0,00
15-abr-09	0,00	354.931.346,35	21.200.000,00	0,00	0,00	0,00	0,00
15-may-09	9.842.431,37	354.931.346,35	21.200.000,00	9.375.766,18	-19.707.860.510,76	466.665,19	-980.930.228,98
15-jun-09	0,00	345.555.580,17	20.733.334,81	0,00	0,00	0,00	0,00
15-jul-09	0,00	345.555.580,17	20.733.334,81	0,00	0,00	0,00	0,00
15-ago-09	12.465.400,39	345.555.580,17	20.733.334,81	11.759.811,69	-23.637.221.494,25	705.588,70	-1.418.233.289,65

1.062.000.000,000
 6,00%
 0,75%
 15-feb-15

69285,54

VIDA RESIDUAL DESDE

2,20

2,40

		SERIE A		SERIE B		SERIE A		SERIE B	
Principal		PRINCIPAL	VIDA	PRINCIPAL	VIDA	PRINCIPAL	VIDA	PRINCIPAL	VIDA
15-sep-09	1	0,00	333.795.768,48	20.027.746,11	0,00	0,00	0,00	0,00	0,00
15-oct-09	1	0,00	333.795.768,48	20.027.746,11	0,00	0,00	0,00	0,00	0,00
15-nov-09	1	12.857.526,27	333.795.768,48	20.027.746,11	12.129.741,76	-23.264.844.703,64	727.784,51	-1.395.890.682,22	
15-dic-09	1	0,00	321.666.026,72	19.299.961,60	0,00	0,00	0,00	0,00	0,00
15-ene-10	1	0,00	321.666.026,72	19.299.961,60	0,00	0,00	0,00	0,00	0,00
15-feb-10	1	12.584.982,31	321.666.026,72	19.299.961,60	11.872.624,82	-21.679.412.922,70	712.357,49	-1.300.764.775,36	
15-mar-10	1	0,00	309.793.401,90	18.587.604,11	0,00	0,00	0,00	0,00	0,00
15-abr-10	1	0,00	309.793.401,90	18.587.604,11	0,00	0,00	0,00	0,00	0,00
15-may-10	1	10.560.215,51	309.793.401,90	18.587.604,11	9.962.467,46	-17.304.805.981,95	597.748,05	-1.038.288.358,92	
15-jun-10	1	0,00	299.830.934,43	17.989.856,07	0,00	0,00	0,00	0,00	0,00
15-jul-10	1	0,00	299.830.934,43	17.989.856,07	0,00	0,00	0,00	0,00	0,00
15-ago-10	1	9.960.464,25	299.830.934,43	17.989.856,07	9.396.664,39	-15.457.512.916,27	563.799,86	-927.450.774,98	
15-sep-10	1	0,00	290.434.270,05	17.426.056,20	0,00	0,00	0,00	0,00	0,00
15-oct-10	1	0,00	290.434.270,05	17.426.056,20	0,00	0,00	0,00	0,00	0,00
15-nov-10	1	8.147.583,17	290.434.270,05	17.426.056,20	7.686.399,22	-11.936.977.983,97	461.183,95	-716.218.679,04	
15-dic-10	1	0,00	282.747.870,83	16.964.872,25	0,00	0,00	0,00	0,00	0,00
15-ene-11	1	0,00	282.747.870,83	16.964.872,25	0,00	0,00	0,00	0,00	0,00
15-feb-11	1	10.813.446,82	282.747.870,83	16.964.872,25	10.201.364,92	-14.904.194.154,74	612.081,90	-894.251.649,28	
15-mar-11	1	0,00	272.546.505,91	16.352.790,35	0,00	0,00	0,00	0,00	0,00
15-abr-11	1	0,00	272.546.505,91	16.352.790,35	0,00	0,00	0,00	0,00	0,00
15-may-11	1	7.940.170,85	272.546.505,91	16.352.790,35	7.490.727,22	-10.277.277.741,70	449.443,63	-616.636.664,50	
15-jun-11	1	0,00	265.055.778,69	15.903.346,72	0,00	0,00	0,00	0,00	0,00
15-jul-11	1	0,00	265.055.778,69	15.903.346,72	0,00	0,00	0,00	0,00	0,00
15-ago-11	1	7.680.966,69	265.055.778,69	15.903.346,72	7.246.194,99	-9.275.129.587,92	434.771,70	-556.507.775,28	
15-sep-11	1	0,00	257.809.583,70	15.468.575,02	0,00	0,00	0,00	0,00	0,00
15-oct-11	1	0,00	257.809.583,70	15.468.575,02	0,00	0,00	0,00	0,00	0,00
15-nov-11	1	6.853.524,21	257.809.583,70	15.468.575,02	6.465.588,88	-7.681.119.586,30	387.935,33	-460.867.175,18	
15-dic-11	1	0,00	251.343.994,82	15.080.639,69	0,00	0,00	0,00	0,00	0,00
15-ene-12	1	0,00	251.343.994,82	15.080.639,69	0,00	0,00	0,00	0,00	0,00
15-feb-12	1	9.533.199,13	251.343.994,82	15.080.639,69	8.993.584,08	-9.856.968.157,06	539.615,05	-591.418.089,42	
15-mar-12	1	0,00	242.350.410,74	14.541.024,64	0,00	0,00	0,00	0,00	0,00
15-abr-12	1	0,00	242.350.410,74	14.541.024,64	0,00	0,00	0,00	0,00	0,00
15-may-12	1	9.033.021,26	242.350.410,74	14.541.024,64	8.521.718,17	-8.572.848.478,83	511.303,09	-514.370.908,73	
15-jun-12	1	0,00	233.828.692,57	14.029.721,55	0,00	0,00	0,00	0,00	0,00
15-jul-12	1	0,00	233.828.692,57	14.029.721,55	0,00	0,00	0,00	0,00	0,00
15-ago-12	1	8.007.339,51	233.828.692,57	14.029.721,55	7.554.093,88	-6.904.441.803,91	453.245,63	-414.266.508,23	
15-sep-12	1	0,00	226.274.598,69	13.576.475,92	0,00	0,00	0,00	0,00	0,00
15-oct-12	1	0,00	226.274.598,69	13.576.475,92	0,00	0,00	0,00	0,00	0,00
15-nov-12	1	7.186.508,19	226.274.598,69	13.576.475,92	6.779.724,71	-5.572.933.709,60	406.783,48	-334.376.022,58	
15-dic-12	1	0,00	219.494.873,98	13.169.692,44	0,00	0,00	0,00	0,00	0,00
15-ene-13	1	0,00	219.494.873,98	13.169.692,44	0,00	0,00	0,00	0,00	0,00
15-feb-13	1	8.517.496,57	219.494.873,98	13.169.692,44	8.035.374,12	-5.865.823.109,53	482.122,45	-351.949.386,57	
15-mar-13	1	0,00	211.459.499,86	12.687.569,99	0,00	0,00	0,00	0,00	0,00
15-abr-13	1	0,00	211.459.499,86	12.687.569,99	0,00	0,00	0,00	0,00	0,00
15-may-13	1	6.973.863,92	211.459.499,86	12.687.569,99	6.579.116,91	-4.217.213.936,53	394.747,01	-253.032.836,19	
15-jun-13	1	0,00	204.880.382,95	12.292.822,98	0,00	0,00	0,00	0,00	0,00
15-jul-13	1	0,00	204.880.382,95	12.292.822,98	0,00	0,00	0,00	0,00	0,00
15-ago-13	1	6.515.003,52	204.880.382,95	12.292.822,98	6.515.003,52	-3.576.736.932,48	0,00	0,00	0,00
15-sep-13	1	0,00	198.365.379,43	12.292.822,98	0,00	0,00	0,00	0,00	0,00
15-oct-13	1	0,00	198.365.379,43	12.292.822,98	0,00	0,00	0,00	0,00	0,00
15-nov-13	1	6.080.651,22	198.365.379,43	12.292.822,98	5.367.689,63	-2.453.034.161,34	712.961,59	-325.823.446,20	
15-dic-13	1	0,00	192.997.689,80	11.579.861,39	0,00	0,00	0,00	0,00	0,00
15-ene-14	1	0,00	192.997.689,80	11.579.861,39	0,00	0,00	0,00	0,00	0,00
15-feb-14	1	7.153.270,94	192.997.689,80	11.579.861,39	6.748.368,81	-2.463.154.616,13	404.902,13	-147.789.276,97	
15-mar-14	1	0,00	186.249.320,99	11.174.959,26	0,00	0,00	0,00	0,00	0,00
15-abr-14	1	0,00	186.249.320,99	11.174.959,26	0,00	0,00	0,00	0,00	0,00
15-may-14	1	7.469.918,55	186.249.320,99	11.174.959,26	7.047.092,97	-1.944.997.660,19	422.825,58	-116.699.859,61	
15-jun-14	1	0,00	179.202.228,02	10.752.133,68	0,00	0,00	0,00	0,00	0,00
15-jul-14	1	0,00	179.202.228,02	10.752.133,68	0,00	0,00	0,00	0,00	0,00
15-ago-14	1	6.039.715,18	179.202.228,02	10.752.133,68	5.697.844,51	-1.048.403.389,74	341.870,67	-62.904.203,38	
15-sep-14	1	0,00	173.504.383,51	10.410.263,01	0,00	0,00	0,00	0,00	0,00
15-oct-14	1	0,00	173.504.383,51	10.410.263,01	0,00	0,00	0,00	0,00	0,00
15-nov-14	1	5.749.172,43	173.504.383,51	10.410.263,01	5.423.747,58	-498.984.776,94	325.424,85	-29.939.086,62	
15-dic-14	1	0,00	168.080.635,93	10.084.838,16	0,00	0,00	0,00	0,00	0,00
15-ene-15	1	0,00	168.080.635,93	10.084.838,16	0,00	0,00	0,00	0,00	0,00
15-feb-15	1	6.377.229,41	168.080.635,93	10.084.838,16	6.016.254,16	0,00	360.975,25	0,00	0,00
15-mar-15	1	0,00	162.064.381,77	9.723.862,91	0,00	0,00	0,00	0,00	0,00
15-abr-15	1	0,00	162.064.381,77	9.723.862,91	0,00	0,00	0,00	0,00	0,00
15-may-15	1	7.418.428,61	162.064.381,77	9.723.862,91	6.998.517,56	622.868.062,62	419.911,05	37.372.083,76	
15-jun-15	1	0,00	155.065.864,22	9.303.951,85	0,00	0,00	0,00	0,00	0,00
15-jul-15	1	0,00	155.065.864,22	9.303.951,85	0,00	0,00	0,00	0,00	0,00
15-ago-15	1	7.185.207,93	155.065.864,22	9.303.951,85	6.778.498,04	1.226.908.145,90	406.709,88	73.614.488,75	
15-sep-15	1	0,00	148.287.366,17	8.897.241,97	0,00	0,00	0,00	0,00	0,00
15-oct-15	1	0,00	148.287.366,17	8.897.241,97	0,00	0,00	0,00	0,00	0,00
15-nov-15	1	6.966.566,83	148.287.366,17	8.897.241,97	6.572.232,86	1.794.219.569,78	394.333,97	107.653.174,19	
15-dic-15	1	0,00	141.715.133,32	8.502.908,00	0,00	0,00	0,00	0,00	0,00
15-ene-16	1	0,00	141.715.133,32	8.502.908,00	0,00	0,00	0,00	0,00	0,00
15-feb-16	1	6.756.775,80	141.715.133,32	8.502.908,00	6.374.316,79	2.326.625.628,11	382.459,01	139.597.537,69	
15-mar-16	1	0,00	135.340.816,53	8.120.448,99	0,00	0,00	0,00	0,00	0,00
15-abr-16	1	0,00	135.340.816,53	8.120.448,99	0,00	0,00	0,00	0,00	0,00
15-may-16	1	6.555.026,22	135.340.816,53	8.120.448,99	6.555.026,22	2.982.536.929,59	0,00	0,00	0,00
15-jun-16	1	0,00	128.785.790,31	8.120.448,99	0,00	0,00	0,00	0,00	0,00
15-jul-16	1	0,00	128.785.790,31	8.120.448,99	0,00	0,00	0,00	0,00	0,00
15-ago-16	1	6.347.679,11	128.785.790,31	8.120.448,99	6.347.679,11	3.472.180.473,20	0,00	0,00	0,00
15-sep-16	1	0,00	122.438.111,20	8.120.448,99	0,00	0,00	0,00	0,00	0,00

1.062.000.000,000
 6,00%
 0,75%
 15-feb-15

69285,54

VIDA RESIDUAL DESDE

2,20

2,40

	Principal	SERIE A	SERIE B	SERIE A		SERIE B		
				PRINCIPAL	VIDA	PRINCIPAL	VIDA	
15-oct-16 1	0,00	122.438.111,20	8.120.448,99	0,00	0,00	0,00	0,00	0,00
15-nov-16 1	6.152.654,62	122.438.111,20	8.120.448,99	6.152.654,62	3.931.546.304,84	0,00	0,00	0,00
15-dic-16 1	0,00	116.285.456,57	8.120.448,99	0,00	0,00	0,00	0,00	0,00
15-ene-17 1	0,00	116.285.456,57	8.120.448,99	0,00	0,00	0,00	0,00	0,00
15-feb-17 1	5.963.416,17	116.285.456,57	8.120.448,99	5.963.416,17	4.359.257.221,72	0,00	0,00	0,00
15-mar-17 1	0,00	110.322.040,40	8.120.448,99	0,00	0,00	0,00	0,00	0,00
15-abr-17 1	0,00	110.322.040,40	8.120.448,99	0,00	0,00	0,00	0,00	0,00
15-may-17 1	5.782.195,19	110.322.040,40	8.120.448,99	5.782.195,19	4.741.400.054,71	0,00	0,00	0,00
15-jun-17 1	0,00	104.539.845,21	8.120.448,99	0,00	0,00	0,00	0,00	0,00
15-jul-17 1	0,00	104.539.845,21	8.120.448,99	0,00	0,00	0,00	0,00	0,00
15-ago-17 1	5.135.954,38	104.539.845,21	8.120.448,99	5.135.954,38	4.683.990.394,51	0,00	0,00	0,00
15-sep-17 1	0,00	99.403.890,83	8.120.448,99	0,00	0,00	0,00	0,00	0,00
15-oct-17 1	0,00	99.403.890,83	8.120.448,99	0,00	0,00	0,00	0,00	0,00
15-nov-17 1	107.525.274,00	99.403.890,83	8.120.448,99	99.403.890,83	99.801.506.396,35	8.120.448,99	8.152.930.787,57	