



FTH.:HIPOTEBANSA IX

FRANCISCO FORTES CLAVERO

ANALYST

SANTANDER DE TITULIZACION, S.G.F.T, S.A.

CIUDAD GRUPO SANTANDER

28660 BOADILLA DEL MONTE

ffortes@gruposantander.com

Tel: 912893290



NAME OF THE FUND:

FTH.:HIPOTEBANSA IX

INFORMATION AT:

QUARTER/SEMESTER: February 20, 2012 - May 18, 2012 YEAR: 2012

Acting on behalf of Santander de Titulización S.G.F.T., S.A. as General Manager:	Signature:
IGNACIO ORTEGA GAVARA - GENERAL MANAGER	

I. DATA OF THE FUND

Constitution Date	November 10, 1999	Paying Agent	BANCO SANTANDER	
Disbursement Date	November 15, 1999	Negotiation Market	AIAF	
Final Date of Redemption	August 18, 2029	Ratings Agencies	MOODY'S ESPAÑA	
			FITCH RATINGS	
Management Company	SANTANDER DE TITULIZACION, S.G.F.T, S.A.	Rating	Initial	Current
Credit Rights 's Seller	BANCO SANTANDER	CLASS A	Aaa/AAA	Aa2/AAA
		CLASS B	A2/A	A2/AA

II. SECURITIES ISSUED CHARGED TO THE FUND: SECURITISATION BONDS

CLASS PRIORITY ISIN CODE	NUM BONDS	NOMINAL			
			Initial	Current	%Act/In
CLASS A ES0338676002	5.052	Nominal per Bond	100.000,00	8.709,28	
		Total Nominal	505.200.000,00	43.999.282,56	8,71 %
CLASS B ES0338676010	140	Nominal per Bond	100.000,00	37.085,71	
		Total Nominal	14.000.000,00	5.191.999,40	37,09 %

REDEMPTION AND INTEREST OF THE BONDS					
Current			Next		
Payment Date of the Current Period May 18, 2012			Next Payment Date August 20, 2012		
	Redemption of the Bonds	Gross Interest	Interest Rate	Gross Interest Next Coupon	Net Interest Next Coupon
CLASS A	489,64 €	29,48 €	0,9683 %	21,72 €	17,16 €
CLASS B	0,00 €	162,36 €	1,4549 %	138,96 €	109,78 €
Accrued amortisation due not payed	0,00 €				
Scheduled Amortisation	NO				

III. ASSET PURCHASED BY THE FUND: CREDIT RIGHTS

CREDIT RIGHTS	ISSUE DATE	CURRENT DATE
Numbre of CR's	8.501	2.051
CR's Outstanding to be amortised	519.200.103,03	49.191.265,64
CR's Outstanding per Loan to be amortised	61.075,18	23.984,03
Interest Rate	4,41 %	2,64 %

PREPAYMENT RATE	CURRENT SITUATION
Monthly Single Rate	3,17 %
Average Monthly Single Rate	5,43 %
Constant Prepayment Rate from Constitution	9,73 %

CURRENT DELINQUENCY	Up to 1 month	From 1 to 6 months	Greater than 6 months
Debt Due (Principal + Interest)	252,41	17.513,73	0,00
Debt to be amortised	0,00	0,00	49.177.126,68
Total Debt	252,41	17.513,73	49.177.126,68

FTH.:HIPOTEBANSA IX

QUARTERLY BONDS PAYOUT REPORT

May 18, 2012

BONDS. PRINCIPAL	
Previous Balance	51.664.943,24 €
Principal Amortised	2.473.661,28 €
Outstanding Balance	49.191.281,96 €
% of Initial Balance	9,47 %
Principal accrued and unpaid	0,00 €

DATA	
Determination Date	May 10, 2012
Payment Date	May 18, 2012
Last Payment Date	February 20, 2012
Number of Days (Act/360)	88
Reference Interest Rate (%)	0,685 %
Next Payment Date	August 20, 2012

INTEREST PAID	
CLASS A	148.932,96 €
CLASS B	22.730,40 €
Interest accrued and unpaid	0,00 €

RESIDUAL LIFE (YEARS)		
	INITIAL	May 18, 2012
CLASS A	7,5	0,24
CLASS B	14,2	0,25

FTH.:HIPOTEBANSA IX

QUARTERLY COLLATERAL REPORT

May 18, 2012

PRINCIPAL	
Previous Balance	51.664.934,85 €
Principal Amortised	2.473.669,21 €
Outstanding Balance	49.191.265,64 €
Number of Credit Rights	2.051
LTV	21,19%

INTEREST	
Interest received during relevant period	370.313,96 €
Interest accrued during relevant period	363.039,98 €

PRINCIPAL BALANCE IN ARREARS					
	UP to 30 DAYS	30 to 60 DAYS	60 to 90 DAYS	90 to 180 DAYS	OVER 180 DAYS
Principal Balance in Arrears	192,35 €	3.048,40 €	4.983,25 €	5.914,96 €	0,00 €
Interest accrued on Credit Rights in Arrears	60,06 €	363,34 €	1.947,77 €	1.256,01 €	0,00 €
Outstanding Balance	40.103,71 €	96.107,87 €	290.985,46 €	116.056,07 €	270.395,01 €
Number of Credit Rights	2	7	6	3	21
% of Outstanding Balance	0,08 %	0,20 %	0,59 %	0,24 %	0,55%

(1) This report does not include loans in arrears from 1 to 15 days, as it is considered a technical arrear with a high percentage of recovery.

FTH.:HIPOTEBANSA IX

QUARTERLY COLLATERAL REPORT

May 18, 2012

CONTENTIOUS / JUDICIAL	
Last balance	270.776,24 €
Difference in Actual Period	-381,23 €
Current balance	270.395,01 €
Contentious CR's number	21

TRANSITORY PROPERTIES	
Last balance	40.366,81 €
Difference in Actual Period	0,00 €
Current balance	40.366,81 €
Transitory properties CR's number	1

NET LOSS	
Last balance	53.819,62 €
Difference in Actual Period	0,00 €
Current balance	53.819,62 €

FTH.:HIPOTEBANSA IX

QUARTERLY REPORT - ALLOCATION OF CASH

May 18, 2012

TOTAL CASH RECEIVED END OF PERIOD	2.901.979,92 €
CASH RECEIVED - PRINCIPAL	
Amortisation of Credit Rights	2.473.287,98 €
CASH RECEIVED - INTEREST	
Interest received from Credit Rights	370.313,96 €
Interest received under GIC	19.915,75 €
CONTENTIOUS	367,73 €
INCOMES/EXPENSES OF TRANSTORY PROPERTIES	0,00 €
RESERVE FUNDS	38.094,50 €
OTHERS	0,00 €

TREASURY ACCOUNT STATEMENT	2.315.145,49 €
PRINCIPAL RESERVE FUND	
Previous Balance	640.645,19 €
Period utilization	30.673,50 €
Outstanding Balance	609.971,69 €
PRINCIPAL RESERVE FUND	
Previous Balance	1.712.594,80 €
Period utilization	7.421,00 €
Outstanding Balance	1.705.173,80 €
WITHHOLDING TAXES	0,00 €
ISSUE EXPENSES WITHHELD	0,00 €
OTHERS	0,00 €

TOTAL CASH PAID END OF PERIOD	2.901.979,92 €
ORDINARY EXPENSES	3.276,54 €
MANAGEMENT FEE	20.175,00 €
SWAP A COLLECTION	225.846,49 €
SWAP A PAYMENT	-148.929,36 €
CLASS A INTEREST	148.932,96 €
CLASS A REDEMPTION	2.473.661,28 €
CLASS B REDEMPTION	0,00 €
SWAP B COLLECTION	25.231,77 €
SWAP B PAYMENT	-22.730,89 €
CLASS B INTEREST	22.730,40 €
SUBORDINATED LOAN A INTEREST	11.298,01 €
SUBORDINATED LOAN B INTEREST	0,00 €
SUBORDINATED LOAN A REDEMPTION	38.094,50 €
SUBORDINATED LOAN B REDEMPTION	0,00 €
RESERVE FUND SUBORDINATED LOAN REDEMPTION	0,00 €
ADMINISTRATION FEE	6.000,00 €
VARIABLE FEE	98.393,22 €

FTH.:HIPOTEBANSA IX

CREDIT ENHACEMENT AND SUBORDINATED LOAN

May 18, 2012

CREDIT ENHACEMENT		
CONCEPTS	INITIAL	May 18, 2012
SUBORDINATED ISSUE	97,30 %	10,55 %
PRINCIPAL RESERVE FUND	6.438.080,00 € (1,24 %)	609.971,69 € (1,24 %)
SECUNDARY RESERVE FUND	3.115.200,00 € (0,60 %)	1.705.173,80 € (3,47 %)

SUBORDINATED LOANS		
CONCEPTS	INITIAL	May 18, 2012
SUBORDINATED LOAN A		
Total Outstanding Subordinated Loan	10.979.289,12 €	2.316.732,71 €
Interest Rate	3,760 %	1,99%

FTH.:HIPOTEBANSA IX

TRIGGERS OF THE MODEL

May 18, 2012

BOND's TRIGGERS	
IF 1) IS HIGHER THAN 2) CLASS B IS NOT AMORTISED	
1) CREDIT RIGHTS IN ARREARS OVER 90 DAYS	386.451,08 €
2) 7% CREDIT RIGHTS OUTSTANDING BALANCE	3.443.388,59 €

CLASS B SHOULD HAVE BEEN AMORTIZED BUT IT HAS REACHED ITS MINIMUM LEVEL.

AGREEMENT	COUNTERPARTY	RATING AGENCY	MINIMUM RATING REQUIRED	CURRENT RATING
CUENTA TESORERÍA	BANCO SANTANDER	MOODYS	P-1 s/t	A3 l/t P-2 s/t
		FITCH	F-1 s/t	A l/t F-1 s/t
SWAP	BANCO SANTANDER	MOODYS	P1 s/t	A3 l/t P-2 s/t
		FITCH	F-1 s/t	A l/t F-1 s/t

COUNTERPARTY DOES NOT HAVE THE MINIMUM RATING REQUIRED. ACTIONS WILL BE TAKE

FTH.:HIPOTEBANSA IX

DEFINITIONS

May 18, 2012

DETERMINATION DATE Means the date in which the Gestora will carry out the necessary calculations, on behalf of the Fund, for the distribution of the available funds at this date, according with the Order of Priority of Payments.
All the information regarding the Assets (Outstanding Balance of the Credit Rights, arrears' tables, transitory properties, stratification tables, etc.) are referred to this mentioned date.

NET LOSSES Those loans which the Originator considers that will not recover (net of recoveries).

FAILED LOANS Those loans which the Originator considers that will not recover, or those loans that at a given date are unpaid for a period equal or higher to 12 or 18 months.

TRANSITORY PROPERTIES Those assets in the balance of the Fund as a consequence of a judicial or non-judicial process.

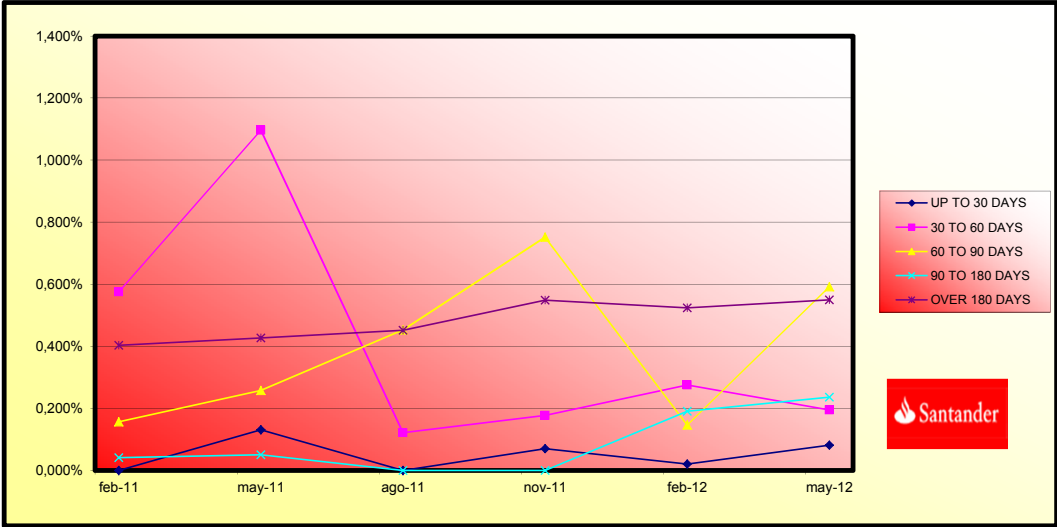
CONTENTIOUS / JUDICIAL Loans in which the Originator will take legal actions. This amount is included in the bucket > 180 days in arrears.



**FONDO DE TITULIZACIÓN HIPOTECARIA
HIPOTEBANSA IX**

Report date: May 18th, 2012

ARREARS PERFORMANCE						
	February 11, 2011	May 11, 2011	August 10, 2011	November 11, 2011	February 13, 2012	May 10, 2012
UP TO 30 DAYS	0,000%	0,131%	0,000%	0,070%	0,020%	0,082%
30 TO 60 DAYS	0,575%	1,097%	0,122%	0,177%	0,275%	0,195%
60 TO 90 DAYS	0,156%	0,257%	0,453%	0,752%	0,146%	0,592%
90 TO 180 DAYS	0,041%	0,050%	0,000%	0,000%	0,191%	0,236%
OVER 180 DAYS	0,404%	0,427%	0,451%	0,549%	0,524%	0,550%





FONDO DE TITULIZACIÓN HIPOTECARIA
HIPOTEBANSA IX

LOAN TO VALUE

Report date: May 18th, 2012

LTV				
	OUTS, BALANCE	% OUTSTANDING	NUMBER LOANS	% NUM LOANS
0-9,99	4.731.148,13 €	9,60%	678	32,93%
10-19,99	6.337.306,73 €	12,86%	426	20,69%
20-29,99	9.490.793,10 €	19,26%	304	14,76%
30-39,99	12.792.374,83 €	25,96%	353	17,14%
40-49,99	11.816.143,68 €	23,98%	226	10,98%
50-59,99	3.876.194,15 €	7,87%	68	3,30%
60-69,99	232.305,02 €	0,47%	4	0,19%
70-79,99	0,00 €	0,00%	0	0,00%
>80	0,00 €	0,00%	0	0,00%

PREPAGOS -HIPOTEBANSA IX

may-12

Fecha	Balance Teórico	Balance Real	0,85% Vector Prepago	Tasa Prepago Mensual desde Inicio	Tasa Prepago Anualizada desde Inicio	Tasa Prepago Mensual	Tasa Prepago Anualizada
		166,386			9,88%		
	519.200.103,03		100,00%	100,00%			
1-dic-99	517.273.354,38	514.246.870,90	99,15%	99,41%	0,59%	6,80%	0,59%
1-ene-00	515.339.524,93	508.947.707,56	98,31%	98,76%	0,62%	7,21%	0,66%
1-feb-00	513.398.588,65	505.121.375,69	97,47%	98,39%	0,54%	6,29%	0,38%
1-mar-00	511.450.519,44	499.861.570,26	96,65%	97,73%	0,57%	6,64%	0,66%
1-abr-00	509.495.291,07	495.386.066,03	95,83%	97,23%	0,56%	6,52%	0,52%
1-may-00	507.532.877,23	491.622.218,05	95,01%	96,87%	0,53%	6,17%	0,38%
1-jun-00	505.563.251,53	486.377.194,60	94,21%	96,21%	0,55%	6,42%	0,68%
1-jul-00	503.587.019,11	480.601.509,64	93,41%	95,44%	0,58%	6,77%	0,80%
1-ago-00	501.603.524,03	472.040.539,01	92,61%	94,11%	0,67%	7,78%	1,39%
1-sep-00	499.612.739,62	467.890.954,79	91,83%	93,65%	0,65%	7,57%	0,48%
1-oct-00	497.614.639,07	465.784.380,90	91,05%	93,60%	0,60%	6,96%	0,05%
1-nov-00	495.609.195,50	463.886.447,62	90,27%	93,60%	0,55%	6,40%	0,00%
1-dic-00	493.596.381,92	458.942.813,84	89,51%	92,98%	0,56%	6,50%	0,66%
1-ene-01	491.576.289,36	452.786.506,38	88,75%	92,11%	0,59%	6,80%	0,94%
1-feb-01	489.548.772,95	448.115.962,73	87,99%	91,54%	0,59%	6,83%	0,62%
1-mar-01	487.513.805,42	443.808.204,78	87,25%	91,04%	0,59%	6,80%	0,55%
1-abr-01	485.471.359,39	439.161.069,40	86,50%	90,46%	0,59%	6,83%	0,63%
1-may-01	483.421.407,37	435.254.045,03	85,77%	90,04%	0,58%	6,76%	0,47%
1-jun-01	481.363.921,77	430.496.752,68	85,04%	89,43%	0,59%	6,81%	0,67%
1-jul-01	479.299.514,33	425.433.127,87	84,32%	88,76%	0,59%	6,90%	0,75%
1-ago-01	477.227.520,20	420.990.606,38	83,60%	88,22%	0,60%	6,91%	0,61%
1-sep-01	475.147.911,48	417.508.522,08	82,89%	87,87%	0,59%	6,81%	0,39%
1-oct-01	473.060.660,21	413.061.822,10	82,19%	87,32%	0,59%	6,83%	0,63%
1-nov-01	470.965.738,28	407.641.087,24	81,49%	86,55%	0,60%	6,97%	0,87%
1-dic-01	468.863.117,52	399.032.451,49	80,80%	85,11%	0,64%	7,45%	1,67%
1-ene-02	466.755.584,62	393.079.874,99	80,11%	84,22%	0,66%	7,62%	1,05%
1-feb-02	464.640.306,53	388.452.367,90	79,43%	83,60%	0,66%	7,65%	0,73%
1-mar-02	462.517.254,80	383.757.021,63	78,76%	82,97%	0,66%	7,69%	0,76%
1-abr-02	460.386.400,85	378.391.294,46	78,09%	82,19%	0,67%	7,80%	0,94%
1-may-02	458.247.716,02	372.903.985,70	77,43%	81,38%	0,68%	7,91%	0,99%
1-jun-02	456.101.171,51	368.679.146,19	76,77%	80,83%	0,68%	7,91%	0,67%
1-jul-02	453.948.238,08	362.792.751,73	76,12%	79,92%	0,70%	8,06%	1,13%
1-ago-02	451.787.392,62	358.429.649,87	75,47%	79,34%	0,70%	8,07%	0,73%
1-sep-02	449.618.606,05	354.559.870,07	74,83%	78,86%	0,70%	8,04%	0,60%
1-oct-02	447.441.849,19	349.649.251,63	74,20%	78,14%	0,70%	8,11%	0,91%
1-nov-02	445.257.092,74	344.321.093,71	73,57%	77,33%	0,71%	8,21%	1,04%
1-dic-02	443.064.307,32	339.700.679,52	72,94%	76,67%	0,72%	8,25%	0,85%
1-ene-03	440.869.601,53	334.706.645,45	72,32%	75,92%	0,72%	8,33%	0,98%
1-feb-03	438.666.830,19	329.794.773,46	71,71%	75,18%	0,73%	8,40%	0,97%
1-mar-03	436.455.963,67	324.874.307,75	71,10%	74,43%	0,74%	8,48%	0,99%
1-abr-03	434.236.972,22	320.516.211,10	70,49%	73,81%	0,74%	8,50%	0,84%
1-may-03	432.009.825,97	317.569.271,92	69,90%	73,51%	0,73%	8,42%	0,41%
1-jun-03	429.774.494,96	313.627.463,11	69,30%	72,97%	0,73%	8,42%	0,73%
1-jul-03	427.536.599,86	309.422.926,13	68,71%	72,37%	0,73%	8,44%	0,82%
1-ago-03	425.290.480,50	304.321.001,66	68,13%	71,56%	0,74%	8,54%	1,13%
1-sep-03	423.036.106,64	300.555.032,17	67,55%	71,05%	0,74%	8,53%	0,71%
1-oct-03	420.773.447,96	295.896.500,15	66,98%	70,32%	0,75%	8,60%	1,02%
1-nov-03	418.502.474,01	290.687.097,46	66,41%	69,46%	0,76%	8,71%	1,23%
1-dic-03	416.223.154,24	285.361.598,63	65,85%	68,56%	0,77%	8,83%	1,29%
1-ene-04	413.951.066,45	279.811.122,32	65,29%	67,60%	0,78%	8,97%	1,41%
1-feb-04	411.670.628,74	275.986.596,49	64,73%	67,04%	0,78%	8,98%	0,82%
1-mar-04	409.381.810,42	271.452.769,24	64,18%	66,31%	0,79%	9,05%	1,09%
1-abr-04	407.084.580,69	266.739.668,09	63,64%	65,52%	0,79%	9,13%	1,18%
1-may-04	404.778.908,64	262.942.079,43	63,10%	64,96%	0,80%	9,14%	0,86%
1-jun-04	402.464.763,25	259.180.705,32	62,56%	64,40%	0,80%	9,16%	0,86%
1-jul-04	400.168.155,32	254.983.245,12	62,03%	63,72%	0,80%	9,21%	1,05%
1-ago-04	397.863.107,36	251.029.913,10	61,50%	63,09%	0,80%	9,24%	0,98%
1-sep-04	395.549.588,34	236.803.000,96	60,98%	59,87%	0,88%	10,07%	5,12%
1-oct-04	393.227.567,14	232.513.922,02	60,46%	59,13%	0,89%	10,14%	10,14%
1-nov-04	390.897.012,52	228.535.085,18	59,95%	58,46%	0,89%	10,18%	1,13%
1-dic-04	388.557.893,10	224.469.127,32	59,44%	57,77%	0,90%	10,23%	1,19%
1-ene-05	386.229.077,36	219.728.146,83	58,94%	56,89%	0,91%	10,34%	1,52%
1-feb-05	383.891.703,23	215.699.659,21	58,44%	56,19%	0,91%	10,40%	1,24%
1-mar-05	381.545.739,24	212.092.809,83	57,94%	55,59%	0,91%	10,43%	1,07%
1-abr-05	379.191.153,84	208.830.438,63	57,45%	55,07%	0,91%	10,43%	0,93%
1-may-05	376.827.915,33	204.798.164,12	56,96%	54,35%	0,92%	10,49%	1,32%

1-jun-05	374.455.991,93	201.133.907,28	56,48%	53,71%	0,92%	10,53%	1,17%	13,14%
1-jul-05	372.093.732,46	197.589.105,85	56,00%	53,10%	0,93%	10,57%	1,14%	12,84%
1-ago-05	369.722.791,69	193.677.095,93	55,52%	52,38%	0,93%	10,64%	1,35%	15,06%
1-sep-05	367.343.137,71	191.093.293,07	55,05%	52,02%	0,93%	10,60%	0,69%	8,03%
1-oct-05	364.954.738,50	187.996.446,55	54,58%	51,51%	0,93%	10,61%	0,98%	11,11%
1-nov-05	362.557.561,93	184.767.267,04	54,12%	50,96%	0,93%	10,63%	1,07%	12,09%
1-dic-05	360.151.575,73	181.390.187,59	53,66%	50,36%	0,94%	10,66%	1,17%	13,19%
1-ene-06	357.751.193,80	177.176.099,57	53,20%	49,52%	0,95%	10,77%	1,67%	18,28%
1-feb-06	355.341.990,46	173.903.688,54	52,75%	48,94%	0,95%	10,80%	1,18%	13,29%
1-mar-06	352.923.933,29	171.417.165,63	52,30%	48,57%	0,95%	10,78%	0,75%	8,69%
1-abr-06	350.496.989,77	167.951.708,05	51,86%	47,92%	0,95%	10,83%	1,34%	14,98%
1-may-06	348.061.127,23	165.525.172,35	51,42%	47,56%	0,95%	10,81%	0,76%	8,69%
1-jun-06	345.616.312,90	162.509.511,36	50,98%	47,02%	0,95%	10,83%	1,13%	12,72%
1-jul-06	343.179.028,95	159.533.616,19	50,55%	46,49%	0,95%	10,85%	1,13%	12,79%
1-ago-06	340.732.787,99	156.525.294,14	50,12%	45,94%	0,96%	10,88%	1,18%	13,29%
1-sep-06	338.277.557,10	154.279.251,43	49,69%	45,61%	0,95%	10,85%	0,72%	8,30%
1-oct-06	335.813.303,23	151.986.278,91	49,27%	45,26%	0,95%	10,83%	0,76%	8,79%
1-nov-06	333.339.993,23	149.303.851,68	48,85%	44,79%	0,95%	10,84%	1,04%	11,75%
1-dic-06	330.857.593,81	146.894.399,40	48,44%	44,40%	0,95%	10,83%	0,88%	10,02%
1-ene-07	328.387.628,03	143.739.100,77	48,03%	43,77%	0,96%	10,89%	1,41%	15,69%
1-feb-07	325.908.585,13	140.867.268,86	47,62%	43,22%	0,96%	10,93%	1,25%	14,04%
1-mar-07	323.420.431,74	138.490.249,58	47,22%	42,82%	0,96%	10,92%	0,93%	10,62%
1-abr-07	320.923.134,39	135.937.009,41	46,81%	42,36%	0,96%	10,94%	1,08%	12,22%
1-may-07	318.416.659,47	133.824.933,78	46,42%	42,03%	0,96%	10,91%	0,78%	8,96%
1-jun-07	315.900.973,26	131.563.917,41	46,02%	41,65%	0,96%	10,91%	0,91%	10,35%
1-jul-07	313.408.026,40	129.020.924,28	45,63%	41,17%	0,96%	10,93%	1,15%	12,99%
1-ago-07	310.905.917,96	127.043.989,79	45,24%	40,86%	0,96%	10,91%	0,74%	8,53%
1-sep-07	308.394.614,27	124.980.168,55	44,86%	40,53%	0,96%	10,89%	0,82%	9,45%
1-oct-07	305.874.081,54	123.394.529,83	44,48%	40,34%	0,95%	10,83%	0,46%	5,33%
1-nov-07	303.344.285,86	122.219.000,58	44,10%	40,29%	0,94%	10,74%	0,13%	1,51%
1-dic-07	300.805.193,17	120.456.300,85	43,73%	40,04%	0,94%	10,70%	0,61%	7,08%
1-ene-08	298.275.868,03	117.187.856,81	43,36%	39,29%	0,95%	10,81%	1,89%	20,45%
1-feb-08	295.737.247,61	114.066.188,27	42,99%	38,57%	0,96%	10,91%	1,83%	19,86%
1-mar-08	293.189.297,77	111.208.896,78	42,62%	37,93%	0,96%	10,98%	1,66%	18,17%
1-abr-08	290.631.984,21	109.373.710,80	42,26%	37,63%	0,96%	10,96%	0,78%	9,02%
1-may-08	288.065.272,52	107.907.510,17	41,90%	37,46%	0,96%	10,91%	0,46%	5,40%
1-jun-08	285.489.128,17	105.594.813,43	41,55%	36,99%	0,96%	10,94%	1,26%	14,12%
1-jul-08	282.934.496,93	103.820.495,10	41,19%	36,69%	0,96%	10,92%	0,79%	9,11%
1-ago-08	280.370.477,43	101.897.104,06	40,84%	36,34%	0,96%	10,92%	0,96%	10,88%
1-sep-08	277.797.035,16	100.139.188,58	40,50%	36,05%	0,96%	10,91%	0,81%	9,35%
1-oct-08	275.214.135,49	98.525.922,11	40,15%	35,80%	0,96%	10,88%	0,69%	7,95%
1-nov-08	272.621.743,66	96.740.036,07	39,81%	35,49%	0,95%	10,87%	0,88%	10,05%
1-dic-08	270.019.824,79	95.888.252,88	39,47%	35,51%	0,95%	10,77%	-0,07%	-0,90%
1-ene-09	267.585.826,77	93.784.557,90	39,14%	35,05%	0,95%	10,81%	1,30%	14,58%
1-feb-09	265.142.883,81	91.849.900,86	38,81%	34,64%	0,95%	10,83%	1,16%	13,07%
1-mar-09	262.690.963,03	90.630.074,41	38,48%	34,50%	0,95%	10,78%	0,41%	4,78%
1-abr-09	260.230.031,45	89.228.273,26	38,15%	34,29%	0,94%	10,74%	0,62%	7,14%
1-may-09	257.760.055,94	88.186.354,85	37,83%	34,21%	0,94%	10,68%	0,22%	2,62%
1-jun-09	255.281.003,27	86.644.901,56	37,51%	33,94%	0,94%	10,66%	0,79%	9,12%
1-jul-09	253.029.239,65	85.317.064,28	37,19%	33,72%	0,93%	10,64%	0,66%	7,60%
1-ago-09	250.769.200,79	84.154.066,25	36,87%	33,56%	0,93%	10,59%	0,47%	5,54%
1-sep-09	248.500.856,30	83.107.088,92	36,56%	33,44%	0,92%	10,54%	0,34%	4,04%
1-oct-09	246.224.175,64	81.930.782,92	36,25%	33,27%	0,92%	10,50%	0,50%	5,88%
1-nov-09	243.939.128,17	79.853.238,19	35,94%	32,73%	0,93%	10,57%	1,62%	17,83%
1-dic-09	241.645.683,16	78.698.595,89	35,63%	32,57%	0,92%	10,53%	0,51%	5,96%
1-ene-10	239.363.953,10	76.830.305,46	35,33%	32,10%	0,93%	10,58%	1,44%	16,01%
1-feb-10	237.073.837,68	75.735.526,74	35,03%	31,95%	0,92%	10,54%	0,47%	5,53%
1-mar-10	234.775.306,09	74.416.661,63	34,73%	31,70%	0,92%	10,52%	0,78%	8,96%
1-abr-10	232.468.327,39	73.189.351,16	34,44%	31,48%	0,92%	10,50%	0,67%	7,79%
1-may-10	230.152.870,55	71.934.384,87	34,15%	31,26%	0,92%	10,48%	0,73%	8,37%
1-jun-10	227.828.904,40	70.742.748,65	33,86%	31,05%	0,92%	10,46%	0,65%	7,57%
1-jul-10	225.512.622,46	69.655.390,23	33,57%	30,89%	0,91%	10,43%	0,53%	6,13%
1-ago-10	223.187.828,18	68.694.018,82	33,28%	30,78%	0,91%	10,38%	0,35%	4,15%
1-sep-10	220.854.490,28	67.726.103,99	33,00%	30,67%	0,91%	10,34%	0,37%	4,32%
1-oct-10	218.512.577,37	66.809.516,89	32,72%	30,57%	0,90%	10,29%	0,30%	3,50%
1-nov-10	216.162.057,92	65.765.538,54	32,44%	30,42%	0,90%	10,25%	0,49%	5,75%
1-dic-10	213.802.900,32	64.705.525,37	32,17%	30,26%	0,89%	10,22%	0,53%	6,13%
1-ene-11	211.551.609,68	63.462.204,24	31,89%	30,00%	0,89%	10,22%	0,88%	10,04%
1-feb-11	209.292.045,55	62.377.705,32	31,62%	29,80%	0,89%	10,20%	0,65%	7,50%
1-mar-11	207.024.177,52	61.446.526,85	31,36%	29,68%	0,89%	10,16%	0,41%	4,85%
1-abr-11	204.747.975,08	60.489.437,58	31,09%	29,54%	0,89%	10,13%	0,46%	5,42%
1-may-11	202.463.407,59	59.591.641,56	30,83%	29,43%	0,88%	10,09%	0,37%	4,38%
1-jun-11	200.170.444,32	58.726.943,53	30,56%	29,34%	0,88%	10,05%	0,32%	3,80%
1-jul-11	198.072.646,96	57.924.866,52	30,30%	29,24%	0,87%	10,00%	0,32%	3,79%
1-ago-11	195.967.140,20	56.986.633,44	30,05%	29,08%	0,87%	9,98%	0,56%	6,55%
1-sep-11	193.853.895,69	56.216.083,82	29,79%	29,00%	0,87%	9,93%	0,28%	3,27%
1-oct-11	191.732.885,02	55.432.481,39	29,54%	28,91%	0,86%	9,89%	0,30%	3,58%
1-nov-11	189.604.079,63	54.676.291,42	29,29%	28,84%	0,86%	9,84%	0,26%	3,04%
1-dic-11	187.467.450,88	53.548.400,42	29,04%	28,56%	0,86%	9,85%	0,95%	10,79%
1-ene-12	185.344.804,15	52.525.545,00	28,79%	28,34%	0,86%	9,84%	0,79%	9,04%
1-feb-12	183.214.356,70	51.664.934,85	28,55%	28,20%	0,86%	9,82%	0,49%	5,78%
1-mar-12	181.076.079,85	50.751.117,09	28,31%	28,03%	0,86%	9,80%	0,61%	7,07%
1-abr-12	178.929.944,84	49.924.499,03	28,07%	27,90%	0,85%	9,77%	0,45%	5,26%
1-may-12	176.775.922,77	49.191.265,64	27,83%	27,83%	0,85%	9,73%	0,27%	3,17%

519.200.000,00
 10,00%
 1,00%
 may-12

VIDA RESIDUAL DESDE

0,24

0,25

FECHA	Principal disponible para la amortización	SERIE A	SERIE B	SERIE A		SERIE B	
				PRINCIPAL	VIDA MEDIA	PRINCIPAL	VIDA MEDIA
		505.200.000,00	14.000.000,00				
18-dic-99	0,00	505.200.000,00	14.000.000,00	0,00	0,00	0,00	0,00
18-ene-00	1	0,00	505.200.000,00	14.000.000,00	0,00	0,00	0,00
18-feb-00	1	14.078.724,31	505.200.000,00	14.000.000,00	14.078.724,31	-62.974.133.853,59	0,00
18-mar-00	1	0,00	491.121.275,69	14.000.000,00	0,00	0,00	0,00
18-abr-00	1	0,00	491.121.275,69	14.000.000,00	0,00	0,00	0,00
18-may-00	1	13.499.157,64	491.121.275,69	14.000.000,00	13.499.157,64	-59.166.807.933,77	0,00
18-jun-00	1	0,00	477.622.118,05	14.000.000,00	0,00	0,00	0,00
18-jul-00	1	0,00	477.622.118,05	14.000.000,00	0,00	0,00	0,00
18-ago-00	1	19.581.679,04	477.622.118,05	14.000.000,00	19.581.679,04	-84.024.984.741,31	0,00
18-sep-00	1	0,00	458.040.439,01	14.000.000,00	0,00	0,00	0,00
18-oct-00	1	0,00	458.040.439,01	14.000.000,00	0,00	0,00	0,00
18-nov-00	1	8.154.091,39	458.040.439,01	14.000.000,00	8.154.091,39	-34.239.029.746,19	0,00
18-dic-00	1	0,00	449.886.347,62	14.000.000,00	0,00	0,00	0,00
18-ene-01	1	0,00	449.886.347,62	14.000.000,00	0,00	0,00	0,00
18-feb-01	1	15.770.484,90	449.886.347,62	14.000.000,00	15.770.484,90	-64.769.381.470,20	0,00
18-mar-01	1	0,00	434.115.862,73	14.000.000,00	0,00	0,00	0,00
18-abr-01	1	0,00	434.115.862,73	14.000.000,00	0,00	0,00	0,00
18-may-01	1	12.861.917,70	434.115.862,73	14.000.000,00	12.861.917,70	-51.679.185.308,16	0,00
18-jun-01	1	0,00	421.253.945,03	14.000.000,00	0,00	0,00	0,00
18-jul-01	1	0,00	421.253.945,03	14.000.000,00	0,00	0,00	0,00
18-ago-01	1	14.263.438,65	421.253.945,03	14.000.000,00	14.263.438,65	-55.998.260.131,37	0,00
18-sep-01	1	0,00	406.990.506,38	14.000.000,00	0,00	0,00	0,00
18-oct-01	1	0,00	406.990.506,38	14.000.000,00	0,00	0,00	0,00
18-nov-01	1	13.349.519,14	406.990.506,38	14.000.000,00	13.349.519,14	-51.182.056.382,76	0,00
18-dic-01	1	0,00	393.640.987,24	14.000.000,00	0,00	0,00	0,00
18-ene-02	1	0,00	393.640.987,24	14.000.000,00	0,00	0,00	0,00
18-feb-02	1	19.188.719,34	393.640.987,24	14.000.000,00	19.188.719,34	-71.804.187.770,28	0,00
18-mar-02	1	0,00	374.452.267,90	14.000.000,00	0,00	0,00	0,00
18-abr-02	1	0,00	374.452.267,90	14.000.000,00	0,00	0,00	0,00
18-may-02	1	15.548.382,20	374.452.267,90	14.000.000,00	15.548.382,20	-56.798.240.176,60	0,00
18-jun-02	1	0,00	358.903.885,70	14.000.000,00	0,00	0,00	0,00
18-jul-02	1	0,00	358.903.885,70	14.000.000,00	0,00	0,00	0,00
18-ago-02	1	14.474.335,83	358.903.885,70	14.000.000,00	14.474.335,83	-51.543.109.890,63	0,00
18-sep-02	1	0,00	344.429.549,87	14.000.000,00	0,00	0,00	0,00
18-oct-02	1	0,00	344.429.549,87	14.000.000,00	0,00	0,00	0,00
18-nov-02	1	14.108.556,16	344.429.549,87	14.000.000,00	14.108.556,16	-48.942.581.319,04	0,00
18-dic-02	1	0,00	330.320.993,71	14.000.000,00	0,00	0,00	0,00
18-ene-03	1	0,00	330.320.993,71	14.000.000,00	0,00	0,00	0,00
18-feb-03	1	14.526.320,25	330.320.993,71	14.000.000,00	14.526.320,25	-49.055.383.484,25	0,00
18-mar-03	1	0,00	315.794.673,46	14.000.000,00	0,00	0,00	0,00
18-abr-03	1	0,00	315.794.673,46	14.000.000,00	0,00	0,00	0,00
18-may-03	1	12.225.501,54	315.794.673,46	14.000.000,00	12.225.501,54	-40.197.449.063,52	0,00
18-jun-03	1	0,00	303.569.171,92	14.000.000,00	0,00	0,00	0,00
18-jul-03	1	0,00	303.569.171,92	14.000.000,00	0,00	0,00	0,00
18-ago-03	1	13.248.270,26	303.569.171,92	14.000.000,00	13.248.270,26	-42.341.471.750,96	0,00
18-sep-03	1	0,00	290.320.901,66	14.000.000,00	0,00	0,00	0,00
18-oct-03	1	0,00	290.320.901,66	14.000.000,00	0,00	0,00	0,00
18-nov-03	1	13.633.904,20	290.320.901,66	14.000.000,00	13.633.904,20	-42.319.638.636,80	0,00
18-dic-03	1	0,00	276.686.997,46	14.000.000,00	0,00	0,00	0,00
18-ene-04	1	0,00	276.686.997,46	14.000.000,00	0,00	0,00	0,00
18-feb-04	1	14.700.500,97	276.686.997,46	14.000.000,00	14.700.500,97	-44.277.908.921,64	0,00
18-mar-04	1	0,00	261.986.496,49	14.000.000,00	0,00	0,00	0,00
18-abr-04	1	0,00	261.986.496,49	14.000.000,00	0,00	0,00	0,00
18-may-04	1	13.044.517,06	261.986.496,49	14.000.000,00	13.044.517,06	-38.116.078.849,32	0,00
18-jun-04	1	0,00	248.941.979,43	14.000.000,00	0,00	0,00	0,00
18-jul-04	1	0,00	248.941.979,43	14.000.000,00	0,00	0,00	0,00
18-ago-04	1	11.912.166,33	248.941.979,43	14.000.000,00	11.912.166,33	-33.711.430.713,90	0,00
18-sep-04	1	0,00	237.029.813,10	14.000.000,00	0,00	0,00	0,00
18-oct-04	1	0,00	237.029.813,10	14.000.000,00	0,00	0,00	0,00
18-nov-04	1	22.494.827,92	237.029.813,10	14.000.000,00	22.494.827,92	-61.590.838.844,96	0,00
18-dic-04	1	0,00	214.534.985,18	14.000.000,00	0,00	0,00	0,00
18-ene-05	1	0,00	214.534.985,18	14.000.000,00	0,00	0,00	0,00
18-feb-05	1	12.835.425,97	214.534.985,18	14.000.000,00	12.835.425,97	-33.962.537.116,62	0,00
18-mar-05	1	0,00	201.699.559,21	14.000.000,00	0,00	0,00	0,00
18-abr-05	1	0,00	201.699.559,21	14.000.000,00	0,00	0,00	0,00
18-may-05	1	10.901.495,09	201.699.559,21	14.000.000,00	10.901.495,09	-27.875.122.945,13	0,00
18-jun-05	1	0,00	190.798.064,12	14.000.000,00	0,00	0,00	0,00
18-jul-05	1	0,00	190.798.064,12	14.000.000,00	0,00	0,00	0,00
18-ago-05	1	11.121.068,19	190.798.064,12	14.000.000,00	11.121.068,19	-27.413.433.088,35	0,00
18-sep-05	1	0,00	179.676.995,93	14.000.000,00	0,00	0,00	0,00
18-oct-05	1	0,00	179.676.995,93	14.000.000,00	0,00	0,00	0,00

519.200.000,000

10,00%

1,00%

may-12

VIDA RESIDUAL DESDE

0,24

0,25

		SERIE A		SERIE B		SERIE A		SERIE B	
		PRINCIPAL	VIDA	PRINCIPAL	VIDA	PRINCIPAL	VIDA	PRINCIPAL	VIDA
18-nov-05	1	8.909.828,89	179.676.995,93	14.000.000,00	8.909.828,89	-21.143.023.955,97	0,00	0,00	0,00
18-dic-05	1	0,00	170.767.167,04	14.000.000,00	0,00	0,00	0,00	0,00	0,00
18-ene-06	1	0,00	170.767.167,04	14.000.000,00	0,00	0,00	0,00	0,00	0,00
18-feb-06	1	10.863.578,50	170.767.167,04	14.000.000,00	10.863.578,50	-24.779.822.558,50	0,00	0,00	0,00
18-mar-06	1	0,00	159.903.588,54	14.000.000,00	0,00	0,00	0,00	0,00	0,00
18-abr-06	1	0,00	159.903.588,54	14.000.000,00	0,00	0,00	0,00	0,00	0,00
18-may-06	1	8.378.516,19	159.903.588,54	14.000.000,00	8.378.516,19	-18.365.707.488,48	0,00	0,00	0,00
18-jun-06	1	0,00	151.525.072,35	14.000.000,00	0,00	0,00	0,00	0,00	0,00
18-jul-06	1	0,00	151.525.072,35	14.000.000,00	0,00	0,00	0,00	0,00	0,00
18-ago-06	1	8.999.878,21	151.525.072,35	14.000.000,00	8.999.878,21	-18.899.744.241,00	0,00	0,00	0,00
18-sep-06	1	0,00	142.525.194,14	14.000.000,00	0,00	0,00	0,00	0,00	0,00
18-oct-06	1	0,00	142.525.194,14	14.000.000,00	0,00	0,00	0,00	0,00	0,00
18-nov-06	1	7.221.442,46	142.525.194,14	14.000.000,00	6.794.510,79	-13.643.377.675,45	426.931,67	-857.278.784,23	0,00
18-dic-06	1	0,00	135.730.683,35	13.573.068,33	0,00	0,00	0,00	0,00	0,00
18-ene-07	1	0,00	135.730.683,35	13.573.068,33	0,00	0,00	0,00	0,00	0,00
18-feb-07	1	8.436.582,82	135.730.683,35	13.573.068,33	7.669.620,75	-14.694.993.348,29	766.962,07	-1.469.499.334,83	0,00
18-mar-07	1	0,00	128.061.062,60	12.806.106,26	0,00	0,00	0,00	0,00	0,00
18-abr-07	1	0,00	128.061.062,60	12.806.106,26	0,00	0,00	0,00	0,00	0,00
18-may-07	1	7.042.335,08	128.061.062,60	12.806.106,26	6.402.122,80	-11.696.678.355,60	640.212,28	-1.169.667.835,56	0,00
18-jun-07	1	0,00	121.658.939,80	12.165.893,98	0,00	0,00	0,00	0,00	0,00
18-jul-07	1	0,00	121.658.939,80	12.165.893,98	0,00	0,00	0,00	0,00	0,00
18-ago-07	1	6.780.943,99	121.658.939,80	12.165.893,98	6.164.494,54	-10.695.398.020,59	616.449,45	-1.069.539.802,06	0,00
18-sep-07	1	0,00	115.494.445,26	11.549.444,53	0,00	0,00	0,00	0,00	0,00
18-oct-07	1	0,00	115.494.445,26	11.549.444,53	0,00	0,00	0,00	0,00	0,00
18-nov-07	1	4.824.989,21	115.494.445,26	11.549.444,53	4.386.353,83	-7.206.779.338,21	438.635,38	-720.677.933,82	0,00
18-dic-07	1	0,00	111.108.091,44	11.110.809,14	0,00	0,00	0,00	0,00	0,00
18-ene-08	1	0,00	111.108.091,44	11.110.809,14	0,00	0,00	0,00	0,00	0,00
18-feb-08	1	8.152.812,31	111.108.091,44	11.110.809,14	7.411.647,55	-11.495.465.357,10	741.164,76	-1.149.546.535,71	0,00
18-mar-08	1	0,00	103.696.443,88	10.369.644,39	0,00	0,00	0,00	0,00	0,00
18-abr-08	1	0,00	103.696.443,88	10.369.644,39	0,00	0,00	0,00	0,00	0,00
18-may-08	1	6.158.678,10	103.696.443,88	10.369.644,39	5.598.798,27	-8.179.844.276,45	559.879,83	-817.984.427,65	0,00
18-jun-08	1	0,00	98.097.645,61	9.809.764,56	0,00	0,00	0,00	0,00	0,00
18-jul-08	1	0,00	98.097.645,61	9.809.764,56	0,00	0,00	0,00	0,00	0,00
18-ago-08	1	6.010.406,11	98.097.645,61	9.809.764,56	5.464.005,55	-7.480.223.604,17	546.400,56	-748.022.360,42	0,00
18-sep-08	1	0,00	92.633.640,05	9.263.364,01	0,00	0,00	0,00	0,00	0,00
18-oct-08	1	0,00	92.633.640,05	9.263.364,01	0,00	0,00	0,00	0,00	0,00
18-nov-08	1	5.157.067,99	92.633.640,05	9.263.364,01	4.688.243,63	-5.986.887.112,03	468.824,36	-598.688.711,20	0,00
18-dic-08	1	0,00	87.945.396,43	8.794.539,64	0,00	0,00	0,00	0,00	0,00
18-ene-09	1	0,00	87.945.396,43	8.794.539,64	0,00	0,00	0,00	0,00	0,00
18-feb-09	1	4.890.135,21	87.945.396,43	8.794.539,64	4.445.577,46	-5.268.009.294,41	444.557,75	-526.800.929,44	0,00
18-mar-09	1	0,00	83.499.818,96	8.349.981,90	0,00	0,00	0,00	0,00	0,00
18-abr-09	1	0,00	83.499.818,96	8.349.981,90	0,00	0,00	0,00	0,00	0,00
18-may-09	1	3.663.546,01	83.499.818,96	8.349.981,90	3.330.496,37	-3.650.224.024,51	333.049,64	-365.022.402,45	0,00
18-jun-09	1	0,00	80.169.322,59	8.016.932,26	0,00	0,00	0,00	0,00	0,00
18-jul-09	1	0,00	80.169.322,59	8.016.932,26	0,00	0,00	0,00	0,00	0,00
18-ago-09	1	4.032.288,60	80.169.322,59	8.016.932,26	3.665.716,91	-3.680.379.776,73	366.571,69	-368.037.977,67	0,00
18-sep-09	1	0,00	76.503.605,68	7.650.360,57	0,00	0,00	0,00	0,00	0,00
18-oct-09	1	0,00	76.503.605,68	7.650.360,57	0,00	0,00	0,00	0,00	0,00
18-nov-09	1	4.300.828,06	76.503.605,68	7.650.360,57	3.909.843,69	-3.565.777.446,11	390.984,37	-356.577.744,61	0,00
18-dic-09	1	0,00	72.593.761,99	7.259.376,20	0,00	0,00	0,00	0,00	0,00
18-ene-10	1	0,00	72.593.761,99	7.259.376,20	0,00	0,00	0,00	0,00	0,00
18-feb-10	1	4.117.711,45	72.593.761,99	7.259.376,20	3.743.374,05	-3.069.566.717,27	374.337,40	-306.956.671,73	0,00
18-mar-10	1	0,00	68.850.387,95	6.885.038,79	0,00	0,00	0,00	0,00	0,00
18-abr-10	1	0,00	68.850.387,95	6.885.038,79	0,00	0,00	0,00	0,00	0,00
18-may-10	1	3.801.141,87	68.850.387,95	6.885.038,79	3.455.583,52	-2.526.031.551,79	345.558,35	-252.603.155,18	0,00
18-jun-10	1	0,00	65.394.804,43	6.539.480,44	0,00	0,00	0,00	0,00	0,00
18-jul-10	1	0,00	65.394.804,43	6.539.480,44	0,00	0,00	0,00	0,00	0,00
18-ago-10	1	3.240.366,05	65.394.804,43	6.539.480,44	2.945.787,32	-1.882.358.096,32	294.578,73	-188.235.809,63	0,00
18-sep-10	1	0,00	62.449.017,11	6.244.901,71	0,00	0,00	0,00	0,00	0,00
18-oct-10	1	0,00	62.449.017,11	6.244.901,71	0,00	0,00	0,00	0,00	0,00
18-nov-10	1	2.928.480,28	62.449.017,11	6.244.901,71	2.662.254,80	-1.456.253.375,60	266.225,48	-145.625.337,56	0,00
18-dic-10	1	0,00	59.786.762,31	5.978.676,23	0,00	0,00	0,00	0,00	0,00
18-ene-11	1	0,00	59.786.762,31	5.978.676,23	0,00	0,00	0,00	0,00	0,00
18-feb-11	1	-421.220,87	59.786.762,31	5.978.676,23	-421.220,87	191.655.496,14	0,00	0,00	0,00
18-mar-11	1	0,00	60.207.983,18	5.978.676,23	0,00	0,00	0,00	0,00	0,00
18-abr-11	1	0,00	60.207.983,18	5.978.676,23	0,00	0,00	0,00	0,00	0,00
18-may-11	1	3.776.751,87	60.207.983,18	5.978.676,23	3.471.703,60	-1.270.643.517,29	305.048,27	-111.647.667,86	0,00
18-jun-11	1	0,00	56.736.279,58	5.673.627,96	0,00	0,00	0,00	0,00	0,00
18-jul-11	1	0,00	56.736.279,58	5.673.627,96	0,00	0,00	0,00	0,00	0,00
18-ago-11	1	3.528.320,37	56.736.279,58	5.673.627,96	3.046.692,41	-834.793.721,55	481.627,96	-131.966.060,51	0,00
18-sep-11	1	0,00	53.689.587,17	5.192.000,00	0,00	0,00	0,00	0,00	0,00
18-oct-11	1	0,00	53.689.587,17	5.192.000,00	0,00	0,00	0,00	0,00	0,00
18-nov-11	1	3.350.882,58	53.689.587,17	5.192.000,00	3.350.882,58	-609.860.630,46	0,00	0,00	0,00
18-dic-11	1	0,00	50.338.704,58	5.192.000,00	0,00	0,00	0,00	0,00	0,00
18-ene-12	1	0,00	50.338.704,58	5.192.000,00	0,00	0,00	0,00	0,00	0,00
18-feb-12	1	3.226.782,32	50.338.704,58	5.192.000,00	3.226.782,32	-290.410.409,05	0,00	0,00	0,00
18-mar-12	1	0,00	47.111.922,26	5.192.000,00	0,00	0,00	0,00	0,00	0,00
18-abr-12	1	0,00	47.111.922,26	5.192.000,00	0,00	0,00	0,00	0,00	0,00
18-may-12	1	3.112.756,62	47.111.922,26	5.192.000,00	3.112.756,62	0,00	0,00	0,00	0,00
18-jun-12	1	0,00	43.999.165,64	5.192.000,00	0,00	0,00	0	0,00	0,00
18-jul-12	1	0,00	43.999.165,64	5.192.000,00	0,00	0,00	0	0,00	0,00

				519.200.000,000				
				10,00%				
				1,00%				
VIDA RESIDUAL DESDE				may-12				
						0,24		0,25
				SERIE A			SERIE B	
	Principal	SERIE A	SERIE B	PRINCIPAL	VIDA	PRINCIPAL	VIDA	
18-ago-12	49.191.265,64	43.999.165,64	5.192.000,00	43.999.165,64	4.047.923.238,88	5.192.000,00	477.664.000,00	