



FONDO DE TITULIZACIÓN HIPOTECARIA HIPOTEBANSA VII

Francisco Fortes Clavero
Analyst
Santander de Titulización
Ciudad Grupo Santander
Ed. Encinar 28660 Boadilla del Monte
ffortes@gruposantander.com
Tel: +34 91 289 32 90



FONDO DE TITULIZACION HIPOTECARIA : HIPOTEBANSA 7

I. DATA OF THE FUND

Constitution Date	May 5th 1998.	Paying Agent	Banco Santander	
Disbursement Date	May 8th 1998.	Negotiation Market	AIAF	
Final Date of Redemption	December 18th 2027.	Rating Agencies	S&P Moody's España	
Gestora	Santander de Titulización	Calification	Inicial	Actual
MP's Seller	Banco Santander	Class A	AAA/Aaa	AAA/Aaa
SWAP Counterparty	Banco Santander	Class B	A/A2	A/A2

II. SECURITIES ISSUED CHARGED TO THE FUND: SECURITISATION BONDS

CLASS PRIORITY	NUMBER OF BONDS		NOMINAL		
			INITIAL	CURRENT	%Cur/Ini
Class A		Nominal per Bond	150.253,03	17.617,48 €	
(ISIN=ES0338659008)	2.055	Total Nominal	308.769.968,63	36.203.921,40 €	11,73%
Class B		Nominal per Bond	150.253,03	63.515,66 €	
(ISIN=ES0338659016)	57	Total Nominal	8.564.422,49	3.620.392,62 €	42,27%

REDEMPTION AND INTEREST OF THE BONDS			
	<u>Current</u>		<u>Next</u>
Current Redemption Date	18/06/2008	Next Coupon Date	18/09/2008
Principal accrued per Bond and not paid	0	Interest Rate	Serie A- 5,1791% Serie B- 5,5593%
Bullet	NO		
Class A Redemption	1.188,86 €	Gross Interest	Serie A- 229,98 €
Class B Redemption	4.286,15 €	Next Coupon Date	Serie B- 890,01
Class A Gross Interest	229,13 €	Net Interest	Serie A- 188,58 €
Class B Gross Interest	891,04 €	Next Coupon Date	Serie B- 729,81 €

III. ASSET PURCHASED BY THE FUND: MORTGAGES PARTICIPATIONS

MORTGAGES PARTICIPATION	ISSUE DATE	CURRENT DATE
Number of loans	5.555	1.599
Credit Rights Outstanding Balance to be amortised	317.334.470,71 €	39.824.319,14 €
Credit Rights Outstanding Balance per loan to be amortised	57.125,92 €	24.905,77 €
Rate Interest	5,82%	5,34%

PREPAYMENT RATE	CURRENT SITUATION
Monthly Single Rate	7,95%
Average Monthly Single Rate	12,18%
Constant Prepayment Rate from Constitution	11,34%



FONDO DE TITULIZACIÓN HIPOTECARIA
HIPOTEBANSA VII

QUARTERLY BTH'S PAYOUT REPORT

Report date: June 18th, 2008

BONDS PRINCIPAL	
PREVIOUS BALANCE:	42.511.731,87 €
PRINCIPAL AMORTISED:	2.687.417,85 €
OUTSTANDING BALANCE:	39.824.314,02 €
% OF INITIAL BALANCE:	12,55%
PRINCIPAL ACCRUED NOT PAID:	0,00

DATA	
Determination Date	June 11, 2008
Payment Date	June 18, 2008
Last Payment Date	March 18, 2008
Num of Days (Act/360)	92
3 Months Libor(%)	4,95813%
Next Payment Date	September 18, 2008

ACUMULATIVE INTEREST PAID TO	
BTH'S HOLDERS AS OF PREVIOUS PAYMENT DATE:	58.774.866,17 €
INTEREST PAID ON December 18th, 2007	521.651,43 €
CUMULATIVE INTEREST PAID TO BTH'S HOLDERS UP TO DATE:	59.296.517,60 €

RESIDUAL LIFE (YEARS)		
	Initial	June 18, 2008
Class A	5,6	1,1
Class B	11	1,14



**FONDO DE TITULIZACIÓN HIPOTECARIA
HIPOTEBANSA VII**

QUARTERLY COLLATERAL REPORT

Report date: June 18th, 2008

MP'S PRINCIPAL	
PREVIOUS BALANCE:	42.511.732,41 €
PRINCIPAL AMORTISED:	2.687.413,27 €
OUTSTANDING BALANCE:	39.824.319,14 €
NUMBER OF LOANS:	1.599
LTV	32,22%

INTEREST	
INTEREST RECEIVED DURING RELEVANT PERIOD:	541.057,34
INTEREST ACCRUED DURING RELEVANT PERIOD:	554.476,08

TRANSITORY PROPERTY	
OUTSTANDING BALANCE:	0,00 €
NUMBER OF TRANSITORY PRO	0

MP'S IN ARREARS					
MP'S IN ARREARS	UP TO 30 DAYS	30 TO 60 DAYS	60 TO 90 DAYS	90 TO 180 DAYS	OVER 180 DAYS
PRINCIPAL BALANCE IN ARREARS:	90,61 €	2.809,61 €	1.204,50 €	291,25 €	0,00 €
INTEREST ACCRUED ON MP'S IN ARREARS:	204,07 €	1.845,00 €	694,17 €	59,74 €	0,00 €
OUTSTANDING BALANCE:	0,00 €	404.961,26 €	240.536,55 €	40.412,32 €	109.659,19 €
NUMBER OF LOANS:	1	6	5	1	4
% OF OUTSTANDING BALANCE	0,00%	1,02%	0,60%	0,10%	0,28%

This Report does not include loans in arrears from 0 to 15 days, as it is considered a technical arrear with a high percentage of recovery.

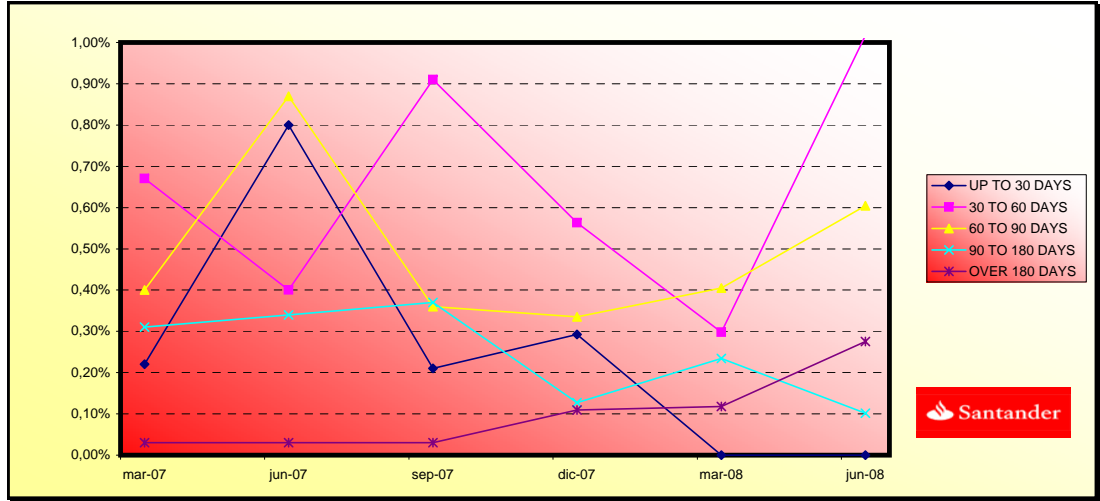
LTV				
	OUTS. BALANCE	% OUTSTANDING	NUMBER LOANS	% NUM LOANS
0-9,99	2.256,71 €	5,68%	327	20,45%
10-19,99	6.631,72 €	16,69%	362	22,63%
20-29,99	11.065,41 €	27,86%	460	28,76%
30-39,99	6.825,78 €	17,18%	169	10,56%
40-49,99	7.961,92 €	20,04%	196	12,25%
50-59,99	4.067,82 €	10,24%	72	4,50%
60-69,99	763,06 €	1,92%	12	0,75%
70-79,99	0,00 €	0,00%	0	0,00%
>80	142,20 €	0,35%	1	0,06%



**FONDO DE TITULIZACION HIPOTECARIA
HIPOTEBANSA VII**

Report date: June 18th, 2008

ARREARS PERFORMANCE						
	11/03/2007	11/06/2007	11/09/2007	11/12/2007	11/03/2008	11/06/2008
UP TO 30 DAYS	0,22%	0,80%	0,21%	0,29%	0,00%	0,00%
30 TO 60 DAYS	0,67%	0,40%	0,91%	0,56%	0,30%	1,02%
60 TO 90 DAYS	0,40%	0,87%	0,36%	0,33%	0,41%	0,60%
90 TO 180 DAYS	0,31%	0,34%	0,37%	0,13%	0,23%	0,10%
OVER 180 DAYS	0,03%	0,03%	0,03%	0,11%	0,12%	0,28%





**FONDO DE TITULIZACIÓN HIPOTECARIA
HIPOTEBANSA VII**

QUARTERLY REPORT - ALLOCATION OF CASH

Report date: June 18th, 2008

TOTAL CASH RECEIVED END OF PERIOD:		3.269.453,56 €
a) CASH RECEIVED - PRINCIPAL		
1. AMORTIZATION OF MP'S:		2.688.659,40 €
b) CASH RECEIVED – INTEREST		
1. INTEREST RECEIVED FROM MP'S:		541.057,34 €
2. INTEREST RECEIVED UNDER GIC:		39.736,82 €
c) CONTENTIUS COLLECTION		0,00 €
d) OTHERS		0,00 €

TREASURY ACCOUNT STATEMENT		1.494.244,00 €
a) RELATED TO THE PRINCIPAL RESERVE FUND		
1. PREVIOUS BALANCE:		527.145,48 €
2. PERIOD UTILIZATION:		-33.323,92 €
3. OUTSTANDING BALANCE:		493.821,56 €
b) RELATED TO THE SECONDARY RESERVE FUND		
1. PREVIOUS PERIOD RETENCION:		1.014.396,99 €
2. PERIOD UTILIZATION:		-13.974,55 €
3. OUTSTANDING BALANCE:		1.000.422,44 €
c) WITHHOLDING ON BTH'S INTEREST TO BE PAID		0,00 €

TOTAL CASH PAID END OF PERIOD:		3.269.453,56 €
1. CURRENT EXPENSES:		
2. NET INTEREST UNDER CLASS A SWAP:		25.465,34 €
3. INTEREST PAID TO BTH'S A HOLDERS:		-17.529,23 €
4. AMORTISATION OF BTH'S A AND B:		470.862,15 €
5. NET INTEREST UNDER CLASS B SWAP:		2.687.417,85 €
6. INTEREST PAID TO BTH'S B HOLDERS:		-5.456,51 €
7. INTEREST PAID ON SUBORDINATED LOAN:		50.789,28 €
8. REPAYMENT OF SUBORDINATED LOAN:		17.816,25 €
9. FEE IN FAVOUR OF SANTANDER		47.298,47 €
10. UTILIZATIONS OF PRINCIPAL AND SECONDARY RESERVE FUND:		40.088,43 €
		-47.298,47 €



FONDO DE TITULIZACIÓN HIPOTECARIA
HIPOTEBANSA VII

CREDIT ENHANCEMENT AND SUBORDINATED LOAN

Report date: June 18th, 2008

CREDIT ENHANCEMENT		
CONCEPTS	08/05/1998	June 18, 2008
SUBORDINATED ISSUE	2,70%	9,09%
PRINCIPAL RESERVE FUND	3.934.946,45 (1,24%)	493821,56(1,24%)
SECONDARY RESERVE FUND	2.443.474,81 (0,77%)	1000422,44(2,51%)
EXCESS SPREAD	0,65%	0,65%

SUBORDINATED LOAN		
CONCEPTS	08/05/1998	June 18, 2008
TOTAL OUTSTANDING	7.458.560 €	1.496.021 €
INTEREST RATE	5,22	4,69



FONDO DE TITULIZACIÓN HIPOTECARIA
HIPOTEBANSA VII

TRIGGERS

Report date: June 18th, 2008

CLASS B REDEMPTION	
IF 1) IS HIGHER THAN 2) CLASS B IS NOT AMORTISED	
1) MP'S IN ARREARS OVER 90 DAYS	150.071,51 €
2) 7% MP'S OUTSTANDING BALANCE	2.787.702,34 €

CLASS B IS AMORTISED

TASAS DE PREPAGO - HIPOTEBANSA VII

June 18th 2008

1000

Fecha	Balance antes de prepago 166,386	Balance Real	1,00% Permanencia Vector de Prepago	a final de mes	Mortalidad mensual media	Tasa Cte. Prepago 11,19%	Mortalidad mensual	Tasa Cte. Prepago 12,18%	Balance después de prepago	
1	317.334,39		100,00%	100,00%					317.334,39	
2	1-jun-98	316.122,28	312.222,65	99,00%	98,77%	1,23%	13,84%	1,23%	13,84%	312.968,56
3	1-jul-98	314.904,28	309.267,47	98,01%	98,21%	0,90%	10,27%	0,56%	6,55%	308.652,49
4	1-ago-98	313.680,38	306.826,46	97,04%	97,81%	0,73%	8,46%	0,40%	4,72%	304.385,65
5	1-sep-98	312.450,54	304.371,89	96,07%	97,41%	0,65%	7,56%	0,41%	4,81%	300.167,53
6	1-oct-98	311.214,74	302.323,25	95,11%	97,14%	0,58%	6,72%	0,28%	3,29%	295.997,61
7	1-nov-98	309.972,94	299.911,08	94,16%	96,75%	0,55%	6,39%	0,40%	4,70%	291.875,36
8	1-dic-98	308.725,13	297.141,48	93,22%	96,25%	0,54%	6,35%	0,52%	6,10%	287.800,29
9	1-ene-99	307.471,25	292.560,21	92,29%	95,15%	0,62%	7,19%	1,14%	12,86%	283.771,90
10	1-feb-99	306.211,30	289.384,09	91,37%	94,50%	0,63%	7,26%	0,68%	7,85%	279.789,68
11	1-mar-99	304.945,24	286.556,32	90,46%	93,97%	0,62%	7,19%	0,57%	6,59%	275.853,14
12	1-abr-99	303.673,04	283.632,30	89,56%	93,40%	0,62%	7,18%	0,61%	7,03%	271.961,81
13	1-may-99	302.394,66	280.833,20	88,66%	92,87%	0,61%	7,13%	0,57%	6,61%	268.115,19
14	1-jun-99	301.110,09	278.037,96	87,78%	92,34%	0,61%	7,09%	0,57%	6,66%	264.312,81
15	1-jul-99	299.824,60	274.221,59	86,90%	91,46%	0,64%	7,37%	0,95%	10,82%	260.558,81
16	1-ago-99	298.532,87	271.294,76	86,04%	90,88%	0,64%	7,37%	0,64%	7,41%	256.848,05
17	1-sep-99	297.234,87	268.789,28	85,18%	90,43%	0,63%	7,27%	0,49%	5,73%	253.180,05
18	1-oct-99	295.930,58	265.786,98	84,33%	89,81%	0,63%	7,30%	0,68%	7,87%	249.554,37
19	1-nov-99	294.619,96	263.044,15	83,49%	89,28%	0,63%	7,28%	0,59%	6,87%	245.970,55
20	1-dic-99	293.302,99	260.845,13	82,65%	88,93%	0,62%	7,14%	0,39%	4,59%	242.428,15
21	1-ene-00	291.979,63	257.110,89	81,83%	88,06%	0,63%	7,35%	0,98%	11,20%	238.926,72
22	1-feb-00	290.649,85	254.178,48	81,01%	87,45%	0,64%	7,38%	0,69%	7,95%	235.465,82
23	1-mar-00	289.313,62	250.965,85	80,21%	86,75%	0,64%	7,46%	0,81%	9,28%	232.045,02
24	1-abr-00	287.970,91	248.126,73	79,41%	86,16%	0,65%	7,48%	0,67%	7,75%	228.663,90
25	1-may-00	286.621,69	245.508,94	78,61%	85,66%	0,64%	7,45%	0,59%	6,85%	225.322,03
26	1-jun-00	285.265,93	242.403,43	77,83%	84,97%	0,65%	7,52%	0,80%	9,14%	222.018,98
27	1-jul-00	283.905,24	239.449,93	77,05%	84,34%	0,65%	7,56%	0,74%	8,58%	218.755,62
28	1-ago-00	282.537,95	236.088,70	76,28%	83,56%	0,66%	7,67%	0,93%	10,57%	215.530,24
29	1-sep-00	281.164,03	233.850,44	75,52%	83,17%	0,66%	7,59%	0,46%	5,43%	212.342,43
30	1-oct-00	279.783,45	232.034,08	74,77%	82,93%	0,64%	7,45%	0,29%	3,39%	209.191,80
31	1-nov-00	278.396,17	229.434,03	74,02%	82,41%	0,64%	7,45%	0,63%	7,28%	206.077,93
32	1-dic-00	277.002,16	226.582,61	73,28%	81,80%	0,65%	7,48%	0,75%	8,59%	203.000,45
33	1-ene-01	275.607,96	222.932,14	72,55%	80,89%	0,66%	7,65%	1,11%	12,57%	199.963,72
34	1-feb-01	274.206,99	219.534,18	71,83%	80,06%	0,67%	7,77%	1,02%	11,59%	196.962,51
35	1-mar-01	272.799,23	217.354,07	71,11%	79,68%	0,67%	7,71%	0,48%	5,63%	193.996,46
36	1-abr-01	271.384,64	215.264,54	70,40%	79,32%	0,66%	7,64%	0,45%	5,21%	191.065,18
37	1-may-01	269.963,19	212.793,97	69,70%	78,82%	0,66%	7,63%	0,63%	7,27%	188.168,29
38	1-jun-01	268.534,84	210.160,96	69,01%	78,26%	0,66%	7,64%	0,71%	8,22%	185.305,43
39	1-jul-01	267.103,73	206.617,54	68,32%	77,35%	0,67%	7,79%	1,16%	13,06%	182.479,07
40	1-ago-01	265.665,67	203.489,25	67,64%	76,60%	0,68%	7,88%	0,98%	11,16%	179.685,96
41	1-sep-01	264.220,64	201.109,50	66,96%	76,11%	0,68%	7,86%	0,63%	7,29%	176.925,76
42	1-oct-01	262.768,60	198.301,75	66,29%	75,47%	0,68%	7,91%	0,85%	9,75%	174.198,09
43	1-nov-01	261.309,52	195.608,81	65,63%	74,86%	0,69%	7,94%	0,81%	9,27%	171.502,62
44	1-dic-01	259.843,36	191.134,46	64,98%	73,56%	0,71%	8,21%	1,74%	18,95%	168.839,00
45	1-ene-02	258.372,98	187.120,26	64,33%	72,42%	0,73%	8,42%	1,54%	17,02%	166.208,73
46	1-feb-02	256.895,45	184.751,94	63,69%	71,92%	0,73%	8,42%	0,70%	8,06%	163.609,60
47	1-mar-02	255.410,77	182.557,20	63,05%	71,48%	0,73%	8,39%	0,61%	7,12%	161.041,26
48	1-abr-02	253.918,88	179.971,44	62,42%	70,88%	0,73%	8,41%	0,84%	9,60%	158.503,40

49	1-may-02	252.419,76	176.336,40	61,80%	69,86%	0,74%	8,58%	1,44%	15,95%	155.995,66
50	1-jun-02	250.913,37	173.988,49	61,18%	69,34%	0,74%	8,58%	0,74%	8,52%	153.517,75
51	1-jul-02	249.422,52	171.096,97	60,57%	68,60%	0,75%	8,65%	1,07%	12,15%	151.083,16
52	1-ago-02	247.924,45	168.568,76	59,97%	67,99%	0,75%	8,68%	0,88%	10,09%	148.677,54
53	1-sep-02	246.419,11	166.492,14	59,37%	67,56%	0,75%	8,65%	0,63%	7,29%	146.300,57
54	1-oct-02	244.906,48	164.305,86	58,78%	67,09%	0,75%	8,64%	0,70%	8,12%	143.951,93
55	1-nov-02	243.386,50	161.468,21	58,19%	66,34%	0,76%	8,72%	1,11%	12,57%	141.631,32
56	1-dic-02	241.859,15	159.106,94	57,61%	65,78%	0,76%	8,73%	0,84%	9,63%	139.338,45
57	1-ene-03	240.353,67	155.706,01	57,04%	64,78%	0,77%	8,88%	1,52%	16,84%	137.089,69
58	1-feb-03	238.840,88	152.790,97	56,47%	63,97%	0,78%	8,98%	1,25%	14,02%	134.867,81
59	1-mar-03	237.320,76	150.531,76	55,90%	63,43%	0,78%	8,99%	0,85%	9,71%	132.672,52
60	1-abr-03	235.793,26	147.402,95	55,35%	62,51%	0,79%	9,11%	1,44%	16,02%	130.503,53
61	1-may-03	234.258,35	145.843,55	54,79%	62,26%	0,79%	9,04%	0,41%	4,81%	128.360,55
62	1-jun-03	232.716,00	143.415,81	54,25%	61,63%	0,79%	9,08%	1,01%	11,50%	126.243,30
63	1-jul-03	231.173,68	140.776,78	53,71%	60,90%	0,80%	9,15%	1,19%	13,33%	124.155,53
64	1-ago-03	229.623,87	138.084,06	53,17%	60,13%	0,80%	9,23%	1,25%	14,02%	122.092,88
65	1-sep-03	228.066,55	136.106,00	52,64%	59,68%	0,80%	9,23%	0,76%	8,74%	120.055,07
66	1-oct-03	226.501,67	133.328,14	52,12%	58,86%	0,81%	9,32%	1,36%	15,20%	118.041,83
67	1-nov-03	224.929,20	130.390,00	51,60%	57,97%	0,82%	9,44%	1,52%	16,79%	116.052,89
68	1-dic-03	223.349,11	128.106,15	51,08%	57,36%	0,83%	9,48%	1,06%	11,97%	114.088,00
69	1-ene-04	221.776,00	125.050,70	50,57%	56,39%	0,84%	9,62%	1,69%	18,52%	112.154,29
70	1-feb-04	220.195,26	122.770,18	50,07%	55,76%	0,84%	9,66%	1,12%	12,63%	110.243,99
71	1-mar-04	218.606,86	119.921,86	49,57%	54,86%	0,85%	9,78%	1,61%	17,70%	108.356,84
72	1-abr-04	217.010,75	117.299,60	49,07%	54,05%	0,86%	9,88%	1,47%	16,25%	106.492,59
73	1-may-04	215.406,89	114.855,01	48,58%	53,32%	0,87%	9,95%	1,36%	15,10%	104.651,00
74	1-jun-04	213.795,27	112.937,01	48,10%	52,82%	0,87%	9,96%	0,93%	10,59%	102.831,81
75	1-jul-04	212.190,44	110.672,98	47,62%	52,16%	0,88%	10,02%	1,26%	14,15%	101.041,74
76	1-ago-04	210.577,83	108.618,50	47,14%	51,58%	0,88%	10,05%	1,10%	12,48%	99.273,48
77	1-sep-04	208.957,40	103.166,13	46,67%	49,37%	0,92%	10,55%	4,28%	40,86%	97.526,80
78	1-oct-04	207.329,11	100.677,46	46,21%	48,56%	0,93%	10,65%	1,65%	18,06%	95.801,45
79	1-nov-04	205.692,93	98.712,53	45,75%	47,99%	0,94%	10,68%	1,17%	13,19%	94.097,22
80	1-dic-04	204.048,80	97.263,01	45,29%	47,67%	0,93%	10,64%	0,67%	7,80%	92.413,85
81	1-ene-05	202.418,62	94.675,40	44,84%	46,77%	0,95%	10,77%	1,88%	20,33%	90.760,97
82	1-feb-05	200.780,54	92.943,33	44,39%	46,29%	0,95%	10,78%	1,03%	11,67%	89.128,35
83	1-mar-05	199.134,51	91.236,87	43,95%	45,82%	0,95%	10,79%	1,02%	11,63%	87.515,78
84	1-abr-05	197.480,50	89.707,36	43,51%	45,43%	0,95%	10,78%	0,85%	9,77%	85.923,05
85	1-may-05	195.818,46	88.634,09	43,08%	45,26%	0,94%	10,71%	0,36%	4,21%	84.349,93
86	1-jun-05	194.148,37	86.557,54	42,65%	44,58%	0,95%	10,78%	1,50%	16,61%	82.796,20
87	1-jul-05	192.494,96	84.847,36	42,22%	44,08%	0,95%	10,80%	1,13%	12,79%	81.272,13
88	1-ago-05	190.833,54	82.992,78	41,80%	43,49%	0,95%	10,85%	1,33%	14,89%	79.766,88
89	1-sep-05	189.164,06	81.683,55	41,38%	43,18%	0,95%	10,82%	0,71%	8,18%	78.280,23
90	1-oct-05	187.486,48	80.232,57	40,97%	42,79%	0,95%	10,81%	0,90%	10,25%	76.812,00
91	1-nov-05	185.800,76	78.689,15	40,56%	42,35%	0,95%	10,82%	1,03%	11,72%	75.361,96
92	1-dic-05	184.106,87	76.928,26	40,16%	41,78%	0,95%	10,87%	1,34%	14,93%	73.929,93
93	1-ene-06	182.438,28	75.076,58	39,76%	41,15%	0,96%	10,94%	1,51%	16,73%	72.529,03
94	1-feb-06	180.761,60	73.544,22	39,36%	40,69%	0,96%	10,96%	1,13%	12,77%	71.145,54
95	1-mar-06	179.076,78	72.034,47	38,97%	40,23%	0,96%	10,98%	1,13%	12,76%	69.779,27
96	1-abr-06	177.383,79	70.524,81	38,58%	39,76%	0,97%	11,00%	1,16%	13,08%	68.430,02
97	1-may-06	175.682,60	69.027,88	38,19%	39,29%	0,97%	11,02%	1,17%	13,22%	67.097,62
98	1-jun-06	173.973,15	67.436,68	37,81%	38,76%	0,97%	11,06%	1,35%	15,00%	65.781,87
99	1-jul-06	172.260,89	66.106,53	37,43%	38,38%	0,97%	11,07%	1,00%	11,34%	64.484,64
100	1-ago-06	170.540,33	64.795,58	37,06%	37,99%	0,97%	11,07%	0,99%	11,30%	63.203,67
101	1-sep-06	168.811,43	63.776,10	36,69%	37,78%	0,97%	11,02%	0,57%	6,58%	61.938,78
102	1-oct-06	167.074,14	62.099,18	36,33%	37,17%	0,98%	11,09%	1,62%	17,77%	60.689,79
103	1-nov-06	165.328,43	60.931,65	35,96%	36,85%	0,97%	11,08%	0,84%	9,67%	59.456,53
104	1-dic-06	163.574,24	59.683,03	35,60%	36,49%	0,97%	11,08%	1,00%	11,35%	58.238,82
105	1-ene-07	161.817,92	58.049,61	35,25%	35,87%	0,98%	11,16%	1,68%	18,41%	57.038,73
106	1-feb-07	160.053,08	56.889,83	34,90%	35,54%	0,98%	11,15%	0,92%	10,47%	55.853,82
107	1-mar-07	158.279,68	55.797,82	34,55%	35,25%	0,98%	11,13%	0,82%	9,41%	54.683,92
108	1-abr-07	156.497,68	54.684,65	34,20%	34,94%	0,98%	11,12%	0,88%	10,05%	53.528,86
109	1-may-07	154.707,04	53.491,78	33,86%	34,58%	0,98%	11,13%	1,05%	11,89%	52.388,47
110	1-jun-07	152.907,71	52.023,03	33,53%	34,02%	0,98%	11,19%	1,60%	17,61%	51.262,60
111	1-jul-07	151.251,86	50.792,46	33,19%	33,58%	0,99%	11,22%	1,30%	14,50%	50.201,60
112	1-ago-07	149.587,97	49.684,76	32,86%	33,21%	0,99%	11,23%	1,09%	12,35%	49.154,03
113	1-sep-07	147.916,01	48.808,97	32,53%	33,00%	0,99%	11,20%	0,65%	7,55%	48.119,74
114	1-oct-07	146.235,95	48.342,08	32,21%	33,06%	0,97%	11,09%	-0,18%	-2,20%	47.098,58
115	1-nov-07	144.547,74	47.551,17	31,89%	32,90%	0,97%	11,04%	0,49%	5,69%	46.090,41
116	1-dic-07	142.851,34	46.517,43	31,57%	32,56%	0,97%	11,05%	1,01%	11,49%	45.095,09
117	1-ene-08	141.390,09	45.484,65	31,25%	32,17%	0,97%	11,07%	1,21%	13,59%	44.188,52
118	1-feb-08	139.921,76	44.256,3	30,94%	31,63%	0,98%	11,14%	1,68%	18,39%	43.293,37
119	1-mar-08	138.446,30	42.511,7	30,63%	30,71%	1,00%	11,31%	2,92%	29,91%	42.409,49
120	1-abr-08	136.963,69	41.990,6	30,33%	30,66%	0,99%	11,24%	0,16%	1,86%	41.536,78
121	1-may-08	135.473,89	40.548,1	30,02%	29,93%	1,00%	11,36%	2,37%	25,04%	40.675,09
122	1-jun-08	133.976,86	39.824,3	29,72%	29,72%	1,00%	11,34%	0,69%	7,95%	39.824,32

DEAL	317.334	3.173,3439
MEZZ. DECLINN	10,00%	
MEZZ. STOPS DECLINN	1,00%	
VIDA RESIDUAL DESDE	11-jun-08	

1,10 1,14

FECHA	PRINCIPAL AVAILABLE	SENIOR NOTES	MEZZANIE NOTES	SERIE A		SERIE B	
				PRINCIPAL	VIDA MEDIA	PRINCIPAL	VIDA MEDIA
			317.334,39				
11-jun-98		0	308.769,97	8.564,42			
11-jul-98	1	0	308.769,97	8.564,42	0	0	0
11-ago-98	1	0	308.769,97	8.564,42	0	0	0
11-sep-98	1	17.167	308.769,97	8.564,42	17.167	-61.131.186	0
11-oct-98	1	0	291.603,11	8.564,42	0	0	0
11-nov-98	1	0	291.603,11	8.564,42	0	0	0
11-dic-98	1	12.367	291.603,11	8.564,42	12.367	-42.914.320	0
11-ene-99	1	0	279.235,87	8.564,42	0	0	0
11-feb-99	1	0	279.235,87	8.564,42	0	0	0
11-mar-99	1	11.947	279.235,87	8.564,42	11.947	-40.381.361	0
11-abr-99	1	0	267.288,72	8.564,42	0	0	0
11-may-99	1	0	267.288,72	8.564,42	0	0	0
11-jun-99	1	11.540	267.288,72	8.564,42	11.540	-37.944.616	0
11-jul-99	1	0	255.748,39	8.564,42	0	0	0
11-ago-99	1	0	255.748,39	8.564,42	0	0	0
11-sep-99	1	11.133	255.748,39	8.564,42	11.133	-35.580.300	0
11-oct-99	1	0	244.615,63	8.564,42	0	0	0
11-nov-99	1	0	244.615,63	8.564,42	0	0	0
11-dic-99	1	10.752	244.615,63	8.564,42	10.752	-33.384.665	0
11-ene-00	1	0	233.863,72	8.564,42	0	0	0
11-feb-00	1	0	233.863,72	8.564,42	0	0	0
11-mar-00	1	10.383	233.863,72	8.564,42	10.383	-31.294.733	0
11-abr-00	1	0	223.480,60	8.564,42	0	0	0
11-may-00	1	0	223.480,60	8.564,42	0	0	0
11-jun-00	1	10.026	223.480,60	8.564,42	10.026	-29.296.099	0
11-jul-00	1	0	213.454,56	8.564,42	0	0	0
11-ago-00	1	0	213.454,56	8.564,42	0	0	0
11-sep-00	1	9.677	213.454,56	8.564,42	9.677	-27.384.637	0
11-oct-00	1	0	203.778,01	8.564,42	0	0	0
11-nov-00	1	0	203.778,01	8.564,42	0	0	0
11-dic-00	1	9.342	203.778,01	8.564,42	9.342	-25.587.682	0
11-ene-01	1	0	194.436,03	8.564,42	0	0	0
11-feb-01	1	0	194.436,03	8.564,42	0	0	0
11-mar-01	1	9.004	194.436,03	8.564,42	9.004	-23.851.570	0
11-abr-01	1	0	185.432,04	8.564,42	0	0	0
11-may-01	1	0	185.432,04	8.564,42	0	0	0
11-jun-01	1	8.691	185.432,04	8.564,42	8.691	-22.222.970	0
11-jul-01	1	0	176.741,01	8.564,42	0	0	0
11-ago-01	1	0	176.741,01	8.564,42	0	0	0
11-sep-01	1	8.380	176.741,01	8.564,42	8.380	-20.655.889	0
11-oct-01	1	0	168.361,33	8.564,42	0	0	0

DEAL 317.334 3.173,3439
 MEZZ. DECLINN 10,00%
 MEZZ. STOPS DECLINN 1,00%
 VIDA RESIDUAL DESDE 11-jun-08

1,10 1,14

		PRINCIPAL	SENIOR	MEZZANIE	SERIE A		SERIE B		
					PRINCIPAL	VIDA	PRINCIPAL	VIDA	
11-nov-01	1	0	168.361,33	8.564,42	0	0	0	0	0
11-dic-01	1	8.087	168.361,33	8.564,42	8.087	-19.197.960	0	0	0
11-ene-02	1	0	160.274,58	8.564,42	0	0	0	0	0
11-feb-02	1	0	160.274,58	8.564,42	0	0	0	0	0
11-mar-02	1	7.798	160.274,58	8.564,42	7.798	-17.810.031	0	0	0
11-abr-02	1	0	152.476,84	8.564,42	0	0	0	0	0
11-may-02	1	0	152.476,84	8.564,42	0	0	0	0	0
11-jun-02	1	7.524	152.476,84	8.564,42	7.524	-16.491.551	0	0	0
11-jul-02	1	0	144.953,32	8.564,42	0	0	0	0	0
11-ago-02	1	0	144.953,32	8.564,42	0	0	0	0	0
11-sep-02	1	7.217	144.953,32	8.564,42	7.217	-15.156.078	0	0	0
11-oct-02	1	0	137.736,14	8.564,42	0	0	0	0	0
11-nov-02	1	0	137.736,14	8.564,42	0	0	0	0	0
11-dic-02	1	6.962	137.736,14	8.564,42	6.962	-13.986.896	0	0	0
11-ene-03	1	0	130.774,02	8.564,42	0	0	0	0	0
11-feb-03	1	0	130.774,02	8.564,42	0	0	0	0	0
11-mar-03	1	6.666	130.774,02	8.564,42	6.666	-12.791.910	0	0	0
11-abr-03	1	0	124.108,10	8.564,42	0	0	0	0	0
11-may-03	1	0	124.108,10	8.564,42	0	0	0	0	0
11-jun-03	1	6.429	124.108,10	8.564,42	6.429	-11.746.189	0	0	0
11-jul-03	1	0	117.678,88	8.564,42	0	0	0	0	0
11-ago-03	1	0	117.678,88	8.564,42	0	0	0	0	0
11-sep-03	1	6.188	117.678,88	8.564,42	6.188	-10.736.583	0	0	0
11-oct-03	1	0	111.490,64	8.564,42	0	0	0	0	0
11-nov-03	1	0	111.490,64	8.564,42	0	0	0	0	0
11-dic-03	1	5.967	111.490,64	8.564,42	5.967	-9.809.862	0	0	0
11-ene-04	1	0	105.523,58	8.564,42	0	0	0	0	0
11-feb-04	1	0	105.523,58	8.564,42	0	0	0	0	0
11-mar-04	1	5.731	105.523,58	8.564,42	5.731	-8.900.488	0	0	0
11-abr-04	1	0	99.792,42	8.564,42	0	0	0	0	0
11-may-04	1	0	99.792,42	8.564,42	0	0	0	0	0
11-jun-04	1	5.525	99.792,42	8.564,42	5.525	-8.072.075	0	0	0
11-jul-04	1	0	94.267,38	8.564,42	0	0	0	0	0
11-ago-04	1	0	94.267,38	8.564,42	0	0	0	0	0
11-sep-04	1	5.305	94.267,38	8.564,42	5.305	-7.262.557	0	0	0
11-oct-04	1	0	88.962,37	8.564,42	0	0	0	0	0
11-nov-04	1	0	88.962,37	8.564,42	0	0	0	0	0
11-dic-04	1	5.113	88.962,37	8.564,42	4.950	-6.325.819	163	-208.522	
11-ene-05	1	0	84.012,59	8.401,26	0	0	0	0	0
11-feb-05	1	0	84.012,59	8.401,26	0	0	0	0	0
11-mar-05	1	4.898	84.012,59	8.401,26	4.453	-5.289.916	445	-528.992	
11-abr-05	1	0	79.559,80	7.955,98	0	0	0	0	0
11-may-05	1	0	79.559,80	7.955,98	0	0	0	0	0
11-jun-05	1	4.720	79.559,80	7.955,98	4.291	-4.702.418	429	-470.242	
11-jul-05	1	0	75.269,27	7.526,93	0	0	0	0	0
11-ago-05	1	0	75.269,27	7.526,93	0	0	0	0	0
11-sep-05	1	4.516	75.269,27	7.526,93	4.105	-4.121.848	411	-412.185	
11-oct-05	1	0	71.163,85	7.116,38	0	0	0	0	0
11-nov-05	1	0	71.163,85	7.116,38	0	0	0	0	0
11-dic-05	1	4.350	71.163,85	7.116,38	3.955	-3.610.749	395	-361.075	
11-ene-06	1	0	67.209,03	6.720,90	0	0	0	0	0

DEAL	317.334	3.173,3439
MEZZ. DECLINN	10,00%	
MEZZ. STOPS DECLINN	1,00%	
VIDA RESIDUAL DESDE	11-jun-08	

1,10 1,14

			SERIE A				SERIE B	
			PRINCIPAL	SENIOR	MEZZANIE	PRINCIPAL	VIDA	PRINCIPAL
11-feb-06	1	0	67.209,03	6.720,90	0	0	0	0
11-mar-06	1	4.151	67.209,03	6.720,90	3.773	-3.105.451	377	-310.545
11-abr-06	1	0	63.435,70	6.343,57	0	0	0	0
11-may-06	1	0	63.435,70	6.343,57	0	0	0	0
11-jun-06	1	3.997	63.435,70	6.343,57	3.634	-2.656.456	363	-265.646
11-jul-06	1	0	59.801,70	5.980,17	0	0	0	0
11-ago-06	1	0	59.801,70	5.980,17	0	0	0	0
11-sep-06	1	3.843	59.801,70	5.980,17	3.494	-2.232.484	349	-223.248
11-oct-06	1	0	56.307,98	5.630,80	0	0	0	0
11-nov-06	1	0	56.307,98	5.630,80	0	0	0	0
11-dic-06	1	3.700	56.307,98	5.630,80	3.364	-1.843.254	336	-184.325
11-ene-07	1	0	52.944,38	5.294,44	0	0	0	0
11-feb-07	1	0	52.944,38	5.294,44	0	0	0	0
11-mar-07	1	3.555	52.944,38	5.294,44	3.232	-1.480.131	323	-148.013
11-abr-07	1	0	49.712,65	4.971,27	0	0	0	0
11-may-07	1	0	49.712,65	4.971,27	0	0	0	0
11-jun-07	1	3.421	49.712,65	4.971,27	3.110	-1.138.364	311	-113.836
11-jul-07	1	0	46.602,37	4.660,24	0	0	0	0
11-ago-07	1	0	46.602,37	4.660,24	0	0	0	0
11-sep-07	1	3.143	46.602,37	4.660,24	2.857	-782.858	286	-78.286
11-oct-07	1	0	43.745,22	4.374,52	0	0	0	0
11-nov-07	1	0	43.745,22	4.374,52	0	0	0	0
11-dic-07	1	3.025	43.745,22	4.374,52	2.750	-503.193	275	-50.319
11-ene-08	1	0	40.995,53	4.099,55	0	0	0	0
11-feb-08	1	0	40.995,53	4.099,55	0	0	0	0
11-mar-08	1	2.686	40.995,53	4.099,55	2.441	-224.613	244	-22.461
11-abr-08	1	0	38.554,09	3.855,41	0	0	0	0
11-may-08	1	0	38.554,09	3.855,41	0	0	0	0
11-jun-08	1	2.585	38.554,09	3.855,41	2.350	0	235	0
11-jul-08	1	0	36.203,93	3.620,39	0	0	0	0
11-ago-08	1	0	36.203,93	3.620,39	0	0	0	0
11-sep-08	1	2.483	36.203,93	3.620,39	2.258	207.694	226	20.769
11-oct-08	1	0	33.946,38	3.394,64	0	0	0	0
11-nov-08	1	0	33.946,38	3.394,64	0	0	0	0
11-dic-08	1	2.390	33.946,38	3.394,64	2.172	397.540	217	39.754
11-ene-09	1	0	31.774,03	3.177,40	0	0	0	0
11-feb-09	1	0	31.774,03	3.177,40	0	0	0	0
11-mar-09	1	2.291	31.774,03	3.177,40	2.287	624.395	4	1.107
11-abr-09	1	0	29.486,87	3.173,35	0	0	0	0
11-may-09	1	0	29.486,87	3.173,35	0	0	0	0
11-jun-09	1	2.204	29.486,87	3.173,35	2.204	804.436	0	0
11-jul-09	1	0	27.282,94	3.173,35	0	0	0	0
11-ago-09	1	0	27.282,94	3.173,35	0	0	0	0
11-sep-09	1	30.456	27.282,94	3.173,35	27.283	12.468.303	3.173	1.450.220