



# **FONDO DE TITULIZACIÓN HIPOTECARIA BANESTO 1**

**Desirée Pérez Montoro  
Analyst  
Santander de Titulización  
Ciudad Grupo Santander  
Ed. Encinar 28660 Boadilla del Monte  
[desperez@gruposantander.com](mailto:desperez@gruposantander.com)  
Tel: +34 91 289 32 78**



FONDO DE TITULIZACIÓN HIPOTECARIA

BANESTO 1

**DATA OF THE FUND**

Constitution Date	July 29th, 1999	Paying Agent	Banesto	
Disbursement Date	August 3th, 1999	Negotiation Market	AIAF	
Final Date of Redemption	February 18th, 2029	Ratings Agencies	Moody's	
Gestora	Santander de Titulización	Classification	Initial	Current
Seller MP's	Banesto	Class A	Aaa	Aaa
		Class B	A2	A2

**SECURITIES ISSUED CHARGED TO THE FUND: SECURITISATION BONDS**

CLASS PRIORITY	NUM BONDS	W.A.L.	NOMINAL			
			ISIN CODE	INITIAL	ACTUAL	%Act/In
Class A (ISIN=ES0341221002)	7.324	0,16	Nominal per Bond	100.000,00 €	9.447,24 €	
			Total Nominal	732.400.000,00 €	69.191.585,76 €	9,45%
Class B (ISIN=ES0341221010)	266	0,16	Nominal per Bond	100.000,00 €	28.533,83 €	
			Total Nominal	26.600.000,00 €	7.589.998,78 €	28,53%

REDEMPTION AND INTEREST OF THE BONDS					
Current			Next		
Payment Date of the Actual Period May 18th, 2009			Next Payment Date August 18th, 2009		
	Redemption of the Bonds	Gross Interest	Interest Rate	Gross Interest Next Coupon	Net Interest Next Coupon
Class A	609,92 €	53,63 €	1,5168%	36,12 €	29,62 €
Class B	0,00 €	180,02 €	1,9173%	137,89 €	113,07 €
Bullet	0				

**ASSET PURCHASED BY THE FUND: MORTGAGE PARTICIPATION**

MORTGAGE PARTICIPACION	ISSUE DATE	CURRENT DATE
Number of MP's	18.269	3.765
MP's Outstanding to be amortised	759.000.019,00	76.781.551,35
MP's Outstanding per Loan to be amortised	41.545,79	20.393,51
Interest Rate	5,16%	5,75%

PREPAYMENT RATE	CURRENT DATE
Monthly Single Rate	6,98%
Average Monthly Single Rate	7,97%
Constant Prepayment Rate from Constitution	12,68%



**FONDO DE TITULIZACIÓN HIPOTECARIA  
BANESTO 1**

**QUARTERLY BONDS PAYOUT REPORT  
MAY 18TH, 2009**

<b>BONDS. PRINCIPAL</b>	
Previous Balance	81.248.638,62 €
Principal Amortised	4.467.054,08 €
Outstanding Balance	76.781.584,54 €
% of Initial Balance	10,12%
Principal Accrued not paid	0,00 €

<b>CUMULATIVE INTEREST PAID</b>	
Bond Holders as of Previous Payment Date	63.968.048,31 €
Interest paid on <b>May 18th,2009</b>	440.671,44 €
Cumulative interest paid to Bond to Bond Holders up to Date	64.408.719,75 €

<b>DATA</b>	
Determination Date	May 8th, 2009
Payment Date	May 18th, 2009
Last Payment Date	February 18th, 2009
Number of Days (Act/360)	89
3 Months Euribor(%)	1,266%
Next Payment Date	August 18th, 2009

<b>RESIDUAL LIFE (YEARS)</b>		
	<b>August 3th, 1999</b>	<b>May 18th, 2009</b>
Class A	5,2	0,16
Class B	8,7	0,16



**FONDO DE TITULIZACIÓN HIPOTECARIA  
BANESTO 1**

**QUATERLY COLLATERAL REPORT  
MAY 18TH, 2009**

<b>PRINCIPAL</b>	
Previous Balance	81.248.612,51 €
Principal Amortised	4.467.061,16 €
Outstanding Balance	76.781.551,35 €
Number of Mortgage Participations	3.765
LTV	34,34%

<b>INTEREST</b>	
Interest received during relevant period	1.169.226,19 €
Interest accrued during relevant period	1.168.188,87 €

<b>PRINCIPAL BALANCE IN ARREARS</b>					
<b>PRINCIPAL BALANCE IN ARREARS</b>	<b>UP TO 30 DAYS</b>	<b>30 TO 60 DAYS</b>	<b>60 TO 90 DAYS</b>	<b>90 TO 180 DAYS</b>	<b>&gt; 180 DAYS</b>
Principal Balance in Arrears	39.494,87 €	8.671,92 €	4.263,25 €	3.233,86 €	8.599,66 €
Interest accrued on PH's in Arrears	16.354,93 €	4.208,48 €	1.550,34 €	440,65 €	275,20 €
Outstanding Balance	3.500.669,35 €	719.629,03 €	407.191,74 €	120.223,21 €	9.999,95 €
Number of Mortgage Participations	153	26	17	9	4
% of Outstanding Balance	4,56%	0,94%	0,53%	0,16%	0,01%

<b>LEGAL</b>	<b>- €</b>

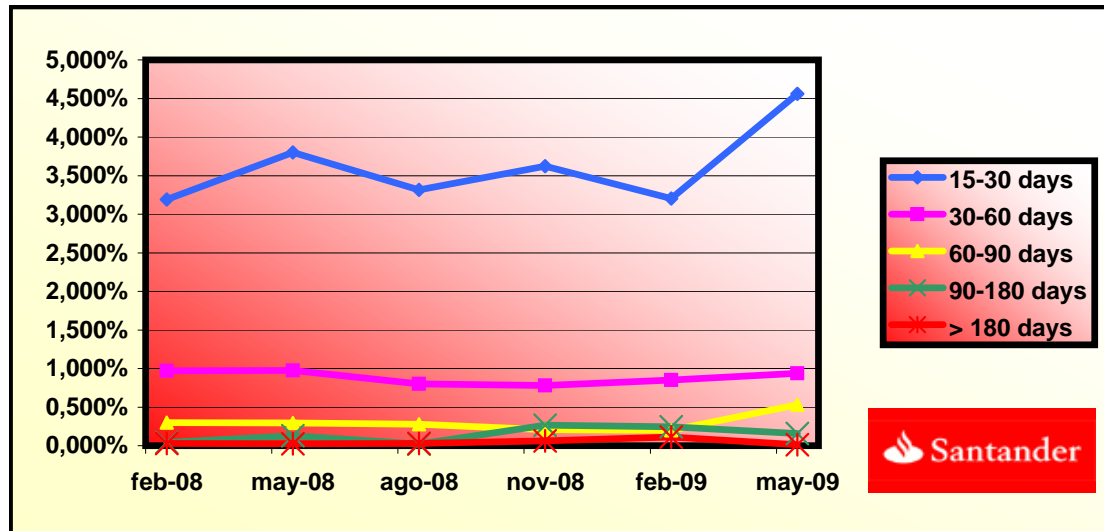
Legal: Loans in which the originator will take legal actions. This amount is included in the over 180 days in arrears bucket



FONDO DE TITULIZACIÓN HIPOTECARIA  
BANESTO 1

HISTORICAL ARREARS REPORT  
MAY 18TH, 2009

Data	Feb-08	May-08	Aug-08	Nov-08	Feb-09	May-09
15-30 days	3,190%	3,800%	3,315%	3,624%	3,205%	4,559%
30-60 days	0,970%	0,976%	0,799%	0,782%	0,851%	0,937%
60-90 days	0,300%	0,294%	0,278%	0,207%	0,200%	0,530%
90-180 days	0,040%	0,130%	0,019%	0,264%	0,243%	0,157%
> 180 days	0,030%	0,024%	0,029%	0,064%	0,113%	0,013%





**FONDO DE TITULIZACIÓN HIPOTECARIA  
BANESTO 1**

**QUARTERLY REPORT - ALLOCATION OF CASH  
MAY 18TH, 2009**

<b>TOTAL CASH RECEIVED END OF PERIOD</b>	<b>5.665.845,19 €</b>
<b>a) CASH RECEIVED - PRINCIPAL</b>	
Amortisation of MP's	4.396.888,86 €
<b>b) CASH RECEIVED - INTEREST</b>	
Interest received from MP's	1.169.226,19 €
Interest received under GIC	37.909,04 €
<b>c) LEGAL</b>	61.821,10 €

<b>TREASURY ACCOUNT STATEMENT</b>	<b>4.606.893,08 €</b>
<b>a) RELATED TO THE RESERVE FUND</b>	
1. Previous Balance	4.874.916,75 €
2. Period utilization	-268.023,67 €
3. Outstanding Balance	4.606.893,08 €

<b>TOTAL CASH PAID END OF PERIOD</b>	<b>5.665.845,19 €</b>
1. Current Expenses	10.153,21 €
2. Interest paid to Class A Bondholders	392.786,12 €
3. Interest paid to Class B Bondholders	47.885,32 €
4.1 Redemption BTH's A	4.467.054,08 €
4.2 Redemption BTH's B	0,00 €
5. Interest paid on Subordinated Loan A	22.913,06 €
6. Interest paid on Subordinated Loan B	0,00 €
7. Repayment of Subordinated Loan A	268.023,67 €
8. Repayment of Subordinated Loan B	0,00 €
9. Fixed Fee in favour of Banesto	6.000,00 €
10. Variable Fee in favour Banesto	719.053,40 €
11. Utilizations of Principal and Secondary Resrve Fund	-268.023,67 €



**FONDO DE TITULIZACIÓN HIPOTECARIA  
BANESTO 1**

**CREDIT ENHACEMENT AND SUBORDINATED LOAN  
MAY 18TH, 2009**

<b>CREDIT ENHACEMENT</b>		
<b>CONCEPTS</b>	<b>August 3th, 1999</b>	<b>May 18th, 2009</b>
Subordinated Issue	3,50%	9,89%
Reserve Fund	18.975.000€ (2,50%)	4.606.893,08€ (6,00%)

<b>SUBORDINATED LOAN</b>		
<b>CONCEPTS</b>	<b>August 3th, 1999</b>	<b>May 18th, 2009</b>
Total Outstanding A	20.496.916,81 €	4.608.430,75 €
Total Outstanding B	1.414.873,97 €	0,00 €
Interest Rate A	2,73%	1,266%



**FONDO DE TITULIZACIÓN HIPOTECARIA  
BANESTO 1**

**TRIGGERS  
MAY 18TH, 2009**

<b>TRIGGERS RESERVE FUND</b>	
<b>1. IF 1.a) IS HIGHER THAN 1.b) THERE IS NO REDEMPTION OF RESERVE FUND:</b>	
1.a) MP'S IN ARREARS OVER 90 DAYS	130.223,16 €
1.b) 3% MP'S OUTSTANDING BALANCE	2.303.446,54 €
<b>2. IF 2.a) IS LOWER THAN 2.b) THERE IS NO REDEMPTION OF RESERVE FUND:</b>	
2.a) INTEREST RATE MP'S	5,75%
2.b) WEIGHTED AVERAGE RATE BONDS A AND B + 0,33%	2,55%
<b>3. IF 3.a) IS HIGHER THAN 3.b) THERE IS NO REDEMPTION OF RESERVE FUND:</b>	
3.a) WRITTE OFF	0,00 €
3.b) 0,025% INITIAL OUTSTANDING BALANCE MP'S * N° PAYMENT DATES	7.210.500,18 €

**THESE LEVELS HAVE NOT BEEN REACHED, SO THE RESERVE FUND HAS DECREASED.**

<b>TRIGGERS BONDS</b>	
<b>1. IF 1.a) IS HIGHER THAN 1.b) THERE IS NO REDEMPTION OF CLASS B:</b>	
1.a) MP'S IN ARREARS OVER 90 DAYS	130.223,16 €
1.b) 7% MP'S OUTSTANDING BALANCE	5.374.708,59 €

**THIS LEVEL HAS NOT BEEN REACHED. HOWEVER, CLASS B WON'T REDEMP T BECAUSE HAS BEEN REACHED  
7.590.000€**





**FONDO DE TITULIZACIÓN HIPOTECARIA  
BANESTO 1**

**TRIGGERS  
MAY 18TH, 2009**

<b>TRIGGERS EARLY REDEMPTION OF THE FUND</b>	
<b>1. IF 1.a) IS HIGHER THAN 1.b) THERE IS EARLY REDEMPTION OF THE FUND:</b>	
1.a) 10% MP'S OUTSTANDING BALANCE	75.900.001,90 €
1.b) PRINCIPAL PENDING PAYMENT OF THE BONS	76.781.584,54 €

**THIS LEVEL HAS NOT BEEN REACHED.**



**FONDO DE TITULIZACIÓN HIPOTECARIA  
BANESTO 1**

**LTV  
MAY 18TH, 2009**

<b>LTV (%)</b>	<b>OUTS. BALANC</b>	<b>% OUTSTANDING</b>	<b>LOANS</b>	<b>% LOANS</b>
0,00 - 9,99	4.224,74	5,49%	749	19,89%
10,00 - 19,99	13.809,21	17,96%	1021	27,11%
20,00 - 29,99	14.384,21	18,70%	724	19,22%
30,00 - 39,99	14.056,00	18,28%	482	12,80%
40,00 - 49,99	15.423,39	20,05%	438	11,63%
50,00 - 59,99	12.261,98	15,94%	295	7,83%
60,00 - 69,99	2.323,05	3,02%	48	1,27%
70,00 - 79,99	36,56	0,04%	1	0,02%
>80	368,32	0,47%	7	0,18%

**PREPAYMENTS - BANESTO 1**

May -18th 2009

DATE	OUTSTANDING BEFORE PREPAYMENT	REAL OUTSTANDING	PREPAYMENT VECTOR	REMAINING AT THE END OF THE MONTH	AVERAGE SINGLE MONTHLY MORTALITY	CPR	MONTHLY SINGLE MONTHLY MORTALITY	CPR	OUTSTANDING AFTER PREPAYMENT	PRINCIPAL AVAILABLE
			1,12%					7,97%		
	759.000,02		100,00%	100,00%					759.000,000000	759.000,000000
sep-99	755.366,17	744.506,7	98,88%	98,56%	1,44%	15,95%	1,44%	15,95%	746.881,1	
oct-99	751.716,69	724.010,7	97,77%	96,31%	1,86%	20,17%	2,28%	24,18%	734.923,4	
nov-99	748.051,52	716.871,1	96,67%	95,83%	1,41%	15,66%	0,50%	5,85%	723.124,9	35.875
dic-99	744.370,59	706.796,1	95,58%	94,95%	1,29%	14,39%	0,92%	10,47%	711.483,7	
ene-00	740.674,95	696.426,4	94,51%	94,03%	1,22%	13,74%	0,98%	11,10%	699.998,9	
feb-00	736.963,42	689.571,8	93,45%	93,57%	1,10%	12,45%	0,49%	5,67%	688.667,5	34.457
mar-00	733.235,93	680.287,7	92,40%	92,78%	1,07%	12,06%	0,84%	9,68%	677.487,6	
abr-00	729.492,41	672.739,1	91,36%	91,36%	1,01%	11,44%	0,60%	6,99%	666.457,3	
may-00	725.732,80	666.330,6	90,33%	91,81%	0,94%	10,76%	0,44%	5,15%	655.574,8	33.093
jun-00	721.957,01	659.284,5	89,32%	91,32%	0,90%	10,32%	0,54%	6,29%	644.838,2	
jul-00	718.172,25	651.086,5	88,31%	90,66%	0,89%	10,15%	0,72%	8,34%	634.252,2	
ago-00	714.371,21	642.166,4	87,32%	89,89%	0,88%	10,11%	0,85%	9,68%	623.808,5	31.766
sep-00	710.553,83	623.658,7	86,34%	87,77%	1,00%	11,34%	2,36%	24,92%	613.505,2	
oct-00	706.720,03	616.983,1	85,37%	87,30%	0,97%	10,99%	0,53%	6,22%	603.340,7	
nov-00	702.869,74	609.181,2	84,41%	86,67%	0,95%	10,81%	0,72%	8,35%	593.313,2	30.495
dic-00	699.002,90	601.490,1	83,46%	86,05%	0,93%	10,66%	0,72%	8,27%	583.421,0	
ene-01	695.141,26	592.596,5	82,53%	85,25%	0,93%	10,65%	0,93%	10,62%	573.680,5	
feb-01	691.263,01	584.606,2	81,60%	84,57%	0,93%	10,57%	0,79%	9,13%	564.071,7	29.241
mar-01	687.368,09	577.868,5	80,68%	84,07%	0,91%	10,38%	0,59%	6,88%	554.592,9	
abr-01	683.456,42	570.372,4	79,78%	83,45%	0,90%	10,28%	0,73%	8,44%	545.242,5	
may-01	679.527,93	539.849,8	78,88%	79,44%	1,09%	12,32%	4,80%	44,61%	536.018,9	28.053
jun-01	675.582,55	533.640,9	77,99%	78,99%	1,07%	12,07%	0,57%	6,66%	526.920,6	
jul-01	671.656,44	526.278,4	77,12%	78,36%	1,05%	11,95%	0,80%	9,22%	517.973,9	
ago-01	667.713,46	519.242,9	76,25%	77,76%	1,04%	11,82%	0,75%	8,68%	509.148,8	26.870
sep-01	663.753,52	513.742,8	75,40%	77,40%	1,02%	11,57%	0,47%	5,48%	500.443,9	
oct-01	659.776,55	480.522,3	74,55%	72,83%	1,21%	13,61%	5,90%	51,81%	491.857,6	
nov-01	655.782,49	472.319,1	73,71%	72,02%	1,21%	13,57%	1,11%	12,52%	483.388,5	25.760
dic-01	651.771,24	465.247,6	72,88%	71,38%	1,20%	13,45%	0,89%	10,18%	475.035,0	
ene-02	647.781,02	457.234,1	72,06%	70,58%	1,19%	13,42%	1,12%	12,61%	466.823,3	
feb-02	643.773,63	449.737,6	71,26%	69,86%	1,19%	13,37%	1,03%	11,65%	458.724,0	24.664
mar-02	639.749,01	443.596,1	70,46%	69,34%	1,17%	13,22%	0,75%	8,58%	450.735,6	
abr-02	635.707,09	437.704,4	69,66%	68,85%	1,16%	13,06%	0,70%	8,09%	442.856,7	
may-02	631.647,79	423.430,0	68,88%	67,04%	1,20%	13,54%	2,64%	27,46%	435.086,0	23.638
jun-02	627.571,03	417.177,8	68,11%	66,47%	1,19%	13,42%	0,84%	9,59%	427.422,1	
jul-02	623.526,65	410.651,1	67,34%	65,86%	1,19%	13,34%	0,93%	10,56%	419.897,2	
ago-02	619.464,87	404.214,9	66,59%	65,25%	1,18%	13,26%	0,92%	10,52%	412.476,0	22.610
sep-02	615.385,64	399.061,8	65,84%	64,85%	1,16%	13,11%	0,62%	7,20%	405.156,9	
oct-02	611.288,85	393.346,1	65,10%	64,35%	1,15%	13,00%	0,77%	8,88%	397.938,8	
nov-02	607.174,46	388.135,0	64,37%	63,92%	1,14%	12,86%	0,66%	7,60%	390.820,4	21.656

**PREPAYMENTS - BANESTO 1**

May -18th 2009

DATE	OUTSTANDING BEFORE PREPAYMENT	REAL OUTSTANDING	PREPAYMENT VECTOR	REMAINING AT THE END OF THE MONTH	AVERAGE SINGLE MONTHLY MORTALITY	CPR	MONTHLY SINGLE MONTHLY MORTALITY	CPR	OUTSTANDING AFTER PREPAYMENT	PRINCIPAL AVAILABLE
			1,12%					7,97%		
dic-02	603.042,37	382.514,0	63,64%	63,43%	1,13%	12,77%	0,77%	8,89%	383.800,5	
ene-03	598.942,89	375.287,7	62,93%	62,66%	1,13%	12,79%	1,22%	13,67%	376.909,5	
feb-03	594.825,78	369.796,7	62,22%	62,17%	1,13%	12,70%	0,78%	8,98%	370.113,9	20.707
mar-03	590.690,97	363.315,7	61,52%	61,51%	1,12%	12,68%	1,06%	12,06%	363.412,5	
abr-03	586.538,38	357.354,6	60,83%	60,93%	1,12%	12,64%	0,94%	10,76%	356.804,2	
may-03	582.367,93	353.110,1	60,15%	60,63%	1,11%	12,49%	0,48%	5,61%	350.287,7	19.826
jun-03	578.179,55	346.745,8	59,47%	59,97%	1,11%	12,49%	1,09%	12,33%	343.861,9	
jul-03	574.043,22	341.533,4	58,81%	59,50%	1,10%	12,42%	0,79%	9,12%	337.566,9	
ago-03	569.889,11	336.072,3	58,14%	58,97%	1,09%	12,37%	0,88%	10,08%	331.359,6	18.928
sep-03	565.717,13	331.180,1	57,49%	58,54%	1,09%	12,29%	0,73%	8,41%	325.238,9	
oct-03	561.527,21	326.881,0	56,85%	58,21%	1,08%	12,18%	0,56%	6,54%	319.203,7	
nov-03	557.319,28	321.481,7	56,21%	57,68%	1,07%	12,14%	0,91%	10,38%	313.252,9	18.107
dic-03	553.093,25	315.840,9	55,58%	57,10%	1,07%	12,13%	1,00%	11,40%	307.385,5	
ene-04	548.912,04	309.562,7	54,95%	56,40%	1,07%	12,16%	1,24%	13,92%	301.635,0	
feb-04	544.712,84	304.432,4	54,33%	55,89%	1,07%	12,13%	0,90%	10,27%	295.965,1	17.288
mar-04	540.495,59	297.021,1	53,72%	54,95%	1,08%	12,25%	1,67%	18,33%	290.374,9	
abr-04	536.260,21	291.660,6	53,12%	54,39%	1,08%	12,23%	1,03%	11,67%	284.863,2	
may-04	532.006,61	286.886,9	52,52%	53,93%	1,08%	12,19%	0,85%	9,74%	279.429,2	16.536
jun-04	527.734,72	280.095,5	51,93%	53,08%	1,09%	12,28%	1,58%	17,37%	274.071,8	
jul-04	523.521,08	275.206,3	51,35%	52,57%	1,08%	12,26%	0,95%	10,87%	268.829,4	
ago-04	519.289,32	270.838,2	50,77%	52,16%	1,08%	12,21%	0,79%	9,03%	263.661,0	15.768
sep-04	515.039,36	267.426,6	50,20%	51,92%	1,07%	12,10%	0,44%	5,21%	258.565,7	
oct-04	510.771,12	261.261,4	49,64%	51,15%	1,08%	12,17%	1,49%	16,47%	253.542,5	
nov-04	506.484,54	256.789,6	49,08%	50,70%	1,07%	12,14%	0,88%	10,06%	248.590,5	15.071
dic-04	502.179,52	252.707,0	48,53%	50,32%	1,07%	12,08%	0,75%	8,60%	243.708,9	
ene-05	497.920,85	246.605,8	47,99%	49,53%	1,08%	12,17%	1,58%	17,39%	238.927,8	
feb-05	493.643,86	241.670,7	47,45%	48,96%	1,08%	12,18%	1,15%	12,98%	234.214,6	14.376
mar-05	489.348,49	237.217,4	46,91%	48,48%	1,07%	12,16%	0,98%	11,16%	229.568,6	
abr-05	485.034,64	232.487,1	46,39%	47,93%	1,08%	12,17%	1,12%	12,67%	224.988,8	
may-05	480.702,25	227.572,6	45,87%	47,34%	1,08%	12,19%	1,23%	13,82%	220.474,4	13.740
jun-05	476.351,23	222.315,3	45,35%	46,67%	1,08%	12,25%	1,42%	15,75%	216.024,6	
jul-05	472.056,00	217.116,0	44,84%	45,99%	1,09%	12,30%	1,45%	16,08%	211.672,0	
ago-05	467.742,31	212.578,7	44,34%	45,45%	1,09%	12,32%	1,19%	13,35%	207.381,8	13.093
sep-05	463.410,07	209.003,7	43,84%	45,10%	1,08%	12,27%	0,76%	8,78%	203.153,0	
oct-05	459.059,19	204.702,6	43,35%	44,59%	1,09%	12,28%	1,13%	12,74%	198.985,1	
nov-05	454.689,62	200.063,2	42,86%	44,00%	1,09%	12,31%	1,33%	14,81%	194.877,1	12.505
dic-05	450.301,25	195.722,0	42,38%	43,46%	1,09%	12,33%	1,22%	13,66%	190.828,3	
ene-06	446.026,52	190.309,7	41,90%	42,67%	1,10%	12,43%	1,83%	19,91%	186.893,5	
feb-06	441.733,41	185.936,4	41,43%	42,09%	1,10%	12,46%	1,35%	15,03%	183.015,5	11.862
mar-06	437.421,84	181.929,2	40,97%	41,59%	1,10%	12,48%	1,19%	13,39%	179.193,4	
abr-06	433.091,73	178.152,7	40,51%	41,14%	1,10%	12,48%	1,10%	12,40%	175.426,6	

**PREPAYMENTS - BANESTO 1**

May -18th 2009

DATE	OUTSTANDING BEFORE PREPAYMENT	REAL OUTSTANDING	PREPAYMENT VECTOR	REMAINING AT THE END OF THE MONTH	AVERAGE SINGLE MONTHLY MORTALITY	CPR	MONTHLY SINGLE MONTHLY MORTALITY	CPR	OUTSTANDING AFTER PREPAYMENT	PRINCIPAL AVAILABLE
			1,12%					7,97%		
may-06	428.743,00	156.690,7	40,05%	36,55%	1,24%	13,85%	11,15%	75,81%	171.714,3	11.301
jun-06	424.375,57	153.041,7	39,60%	36,06%	1,24%	13,87%	1,32%	14,78%	168.055,9	
jul-06	420.174,12	149.697,0	39,16%	35,63%	1,24%	13,86%	1,21%	13,56%	164.523,0	
ago-06	415.954,60	146.459,3	38,72%	35,21%	1,23%	13,85%	1,17%	13,17%	161.041,3	10.673
sep-06	411.716,94	143.857,4	38,28%	34,94%	1,23%	13,80%	0,77%	8,81%	157.610,0	
oct-06	407.461,05	140.937,2	37,85%	34,59%	1,23%	13,77%	1,01%	11,43%	154.228,7	
nov-06	403.186,87	137.741,9	37,43%	34,16%	1,23%	13,77%	1,23%	13,81%	150.896,6	10.145
dic-06	398.894,30	134.799,2	37,01%	33,79%	1,23%	13,75%	1,08%	12,25%	147.613,1	
ene-07	394.765,61	131.451,2	36,59%	33,30%	1,23%	13,78%	1,46%	16,22%	144.444,2	
feb-07	390.619,17	128.676,5	36,18%	32,94%	1,23%	13,76%	1,07%	12,13%	141.321,6	9.575
mar-07	386.454,89	126.075,8	35,77%	32,62%	1,22%	13,73%	0,97%	10,99%	138.244,4	
abr-07	382.272,71	123.471,3	35,37%	32,30%	1,22%	13,71%	0,99%	11,30%	135.212,3	
may-07	378.072,54	120.888,4	34,97%	31,97%	1,22%	13,68%	1,00%	11,41%	132.224,5	9.097
jun-07	373.854,32	118.444,6	34,58%	31,68%	1,22%	13,65%	0,92%	10,45%	129.280,5	
jul-07	369.795,33	115.964,8	34,19%	31,36%	1,21%	13,63%	1,02%	11,57%	126.440,4	
ago-07	365.718,88	113.579,7	33,81%	31,06%	1,21%	13,60%	0,97%	10,99%	123.642,0	8.583
sep-07	361.624,91	111.659,1	33,43%	30,88%	1,20%	13,53%	0,58%	6,72%	120.884,6	
oct-07	357.513,33	109.441,2	33,05%	30,61%	1,20%	13,49%	0,86%	9,84%	118.167,7	
nov-07	353.384,07	107.216,2	32,68%	30,34%	1,20%	13,46%	0,89%	10,15%	115.490,8	8.151
dic-07	349.237,06	105.269,9	32,31%	30,14%	1,19%	13,40%	0,65%	7,52%	112.853,4	
ene-08	345.374,17	102.793,0	31,95%	29,76%	1,19%	13,41%	1,26%	14,12%	110.351,5	
feb-08	341.494,66	100.964,8	31,59%	29,57%	1,19%	13,36%	0,66%	7,67%	107.886,3	7.605
mar-08	337.598,48	98.952,0	31,24%	29,31%	1,18%	13,32%	0,86%	9,87%	105.457,3	
abr-08	333.685,54	97.403,2	30,89%	29,19%	1,18%	13,24%	0,41%	4,82%	103.064,1	
may-08	329.755,78	95.575,1	30,54%	28,98%	1,17%	13,20%	0,71%	8,17%	100.706,3	7.180
jun-08	325.809,12	93.936,8	30,20%	28,83%	1,17%	13,13%	0,52%	6,11%	98.383,3	
jul-08	322.315,43	92.198,4	29,86%	28,61%	1,16%	13,10%	0,79%	9,04%	96.235,0	
ago-08	318.806,72	90.460,1	29,52%	28,37%	1,16%	13,06%	0,81%	9,25%	94.118,1	6.588
sep-08	315.282,93	89.071,3	29,19%	28,25%	1,15%	12,99%	0,43%	5,09%	92.032,3	
oct-08	311.743,98	87.589,7	28,86%	28,10%	1,15%	12,93%	0,55%	6,37%	89.977,1	
nov-08	308.189,81	86.120,9	28,54%	27,94%	1,14%	12,88%	0,54%	6,33%	87.952,0	6.166
dic-08	304.620,37	84.553,4	28,22%	27,76%	1,14%	12,83%	0,67%	7,75%	85.956,9	
ene-09	301.308,07	82.779,7	27,90%	27,47%	1,14%	12,82%	1,02%	11,59%	84.067,1	
feb-09	297.981,53	81.248,6	27,59%	27,27%	1,13%	12,78%	0,75%	8,68%	82.205,1	5.747
mar-09	294.640,68	79.885,7	27,28%	27,11%	1,13%	12,73%	0,56%	6,55%	80.370,4	
abr-09	291.285,47	78.149,7	26,97%	26,83%	1,13%	12,72%	1,05%	11,86%	78.562,7	
may-09	287.915,84	76.781,6	26,67%	26,67%	1,12%	12,68%	0,60%	6,98%	76.781,6	82.205

DEAL  
 MEZZ. DECLINN  
 MEZZ. STOPS DECLINN  
 VIDA RESIDUAL DESDE

759.000  
 8,00%  
 1,00%  
**11/05/09**

DATE		PRINCIPAL AVAILABLE	SENIOR NOTES	MEZZANIE NOTES	CLASS A PRINCIPAL	AVERAGE LIFE CLASS A	CLASS B PRINCIPAL	AVERAGE LIFE CLASS B
						0,16		0,16
11/09/99		0	732.400.000	26.600.000	0	0	0	0
11/10/99	1	0	732.400.000	26.600.000	0	0	0	0
11/11/99	1	35.875.063	732.400.000	26.600.000	35.875.063	(124.450.594.333)	0	0
11/12/99	1	0	696.524.937	26.600.000	0	0	0	0
11/01/00	1	0	696.524.937	26.600.000	0	0	0	0
11/02/00	1	34.457.435	696.524.937	26.600.000	34.457.435	(116.362.758.240)	0	0
11/03/00	1	0	662.067.502	26.600.000	0	0	0	0
11/04/00	1	0	662.067.502	26.600.000	0	0	0	0
11/05/00	1	33.092.725	662.067.502	26.600.000	33.092.725	(108.775.786.569)	0	0
11/06/00	1	0	628.974.777	26.600.000	0	0	0	0
11/07/00	1	0	628.974.777	26.600.000	0	0	0	0
11/08/00	1	31.766.319	628.974.777	26.600.000	31.766.319	(101.493.388.211)	0	0
11/09/00	1	0	597.208.458	26.600.000	0	0	0	0
11/10/00	1	0	597.208.458	26.600.000	0	0	0	0
11/11/00	1	30.495.282	597.208.458	26.600.000	30.495.282	(94.626.860.669)	0	0
11/12/00	1	0	566.713.176	26.600.000	0	0	0	0
11/01/01	1	0	566.713.176	26.600.000	0	0	0	0
11/02/01	1	29.241.497	566.713.176	26.600.000	29.241.497	(88.046.148.396)	0	0
11/03/01	1	0	537.471.679	26.600.000	0	0	0	0
11/04/01	1	0	537.471.679	26.600.000	0	0	0	0
11/05/01	1	28.052.765	537.471.679	26.600.000	28.052.765	(81.970.179.246)	0	0
11/06/01	1	0	509.418.914	26.600.000	0	0	0	0
11/07/01	1	0	509.418.914	26.600.000	0	0	0	0
11/08/01	1	26.870.070	509.418.914	26.600.000	26.870.070	(76.042.296.703)	0	0
11/09/01	1	0	482.548.844	26.600.000	0	0	0	0
11/10/01	1	0	482.548.844	26.600.000	0	0	0	0
11/11/01	1	25.760.389	482.548.844	26.600.000	25.760.389	(70.531.944.736)	0	0
11/12/01	1	0	456.788.455	26.600.000	0	0	0	0
11/01/02	1	0	456.788.455	26.600.000	0	0	0	0
11/02/02	1	24.664.443	456.788.455	26.600.000	24.664.443	(65.262.116.988)	0	0
11/03/02	1	0	432.124.012	26.600.000	0	0	0	0
11/04/02	1	0	432.124.012	26.600.000	0	0	0	0
11/05/02	1	23.638.021	432.124.012	26.600.000	23.638.021	(60.442.420.678)	0	0
11/06/02	1	0	408.485.991	26.600.000	0	0	0	0
11/07/02	1	0	408.485.991	26.600.000	0	0	0	0
11/08/02	1	22.610.039	408.485.991	26.600.000	22.610.039	(55.733.745.207)	0	0
11/09/02	1	0	385.875.952	26.600.000	0	0	0	0
11/10/02	1	0	385.875.952	26.600.000	0	0	0	0
11/11/02	1	21.655.511	385.875.952	26.600.000	21.655.511	(51.388.527.645)	0	0
11/12/02	1	0	364.220.441	26.600.000	0	0	0	0
11/01/03	1	0	364.220.441	26.600.000	0	0	0	0
11/02/03	1	20.706.547	364.220.441	26.600.000	20.706.547	(47.231.633.989)	0	0
11/03/03	1	0	343.513.894	26.600.000	0	0	0	0
11/04/03	1	0	343.513.894	26.600.000	0	0	0	0
11/05/03	1	19.826.196	343.513.894	26.600.000	19.173.433	(42.028.165.585)	652.763	(1.430.856.821)
11/06/03	1	0	324.340.461	25.947.237	0	0	0	0
11/07/03	1	0	324.340.461	25.947.237	0	0	0	0
11/08/03	1	18.928.051	324.340.461	25.947.237	17.525.973	(36.804.543.850)	1.402.078	(2.944.363.508)
11/09/03	1	0	306.814.487	24.545.159	0	0	0	0
11/10/03	1	0	306.814.487	24.545.159	0	0	0	0
11/11/03	1	18.106.704	306.814.487	24.545.159	16.765.467	(33.665.057.555)	1.341.237	(2.693.204.604)
11/12/03	1	0	290.049.020	23.203.922	0	0	0	0
11/01/04	1	0	290.049.020	23.203.922	0	0	0	0
11/02/04	1	17.287.819	290.049.020	23.203.922	16.007.240	(30.669.872.160)	1.280.579	(2.453.589.773)
11/03/04	1	0	274.041.780	21.923.342	0	0	0	0
11/04/04	1	0	274.041.780	21.923.342	0	0	0	0
11/05/04	1	16.535.928	274.041.780	21.923.342	15.311.045	(27.957.967.991)	1.224.884	(2.236.637.439)
11/06/04	1	0	258.730.735	20.698.459	0	0	0	0
11/07/04	1	0	258.730.735	20.698.459	0	0	0	0
11/08/04	1	15.768.151	258.730.735	20.698.459	14.600.139	(25.316.641.839)	1.168.011	(2.025.331.347)

DEAL  
 MEZZ. DECLINN  
 MEZZ. STOPS DECLINN  
 VIDA RESIDUAL DESDE

759.000  
 8,00%  
 1,00%  
**11/05/09**

DATE		PRINCIPAL AVAILABLE	SENIOR NOTES	MEZZANIE NOTES	CLASS A PRINCIPAL	AVERAGE LIFE CLASS A	CLASS B PRINCIPAL	AVERAGE LIFE CLASS B
11/09/04	1	0	244.130.596	19.530.448	0	0	0	0
11/10/04	1	0	244.130.596	19.530.448	0	0	0	0
11/11/04	1	15.070.503	244.130.596	19.530.448	13.954.170	(22.912.746.755)	1.116.334	(1.833.019.740)
11/12/04	1	0	230.176.426	18.414.114	0	0	0	0
11/01/05	1	0	230.176.426	18.414.114	0	0	0	0
11/02/05	1	14.375.932	230.176.426	18.414.114	13.311.048	(20.632.124.945)	1.064.884	(1.650.569.996)
11/03/05	1	0	216.865.378	17.349.230	0	0	0	0
11/04/05	1	0	216.865.378	17.349.230	0	0	0	0
11/05/05	1	13.740.182	216.865.378	17.349.230	12.722.391	(18.587.412.865)	1.017.791	(1.486.993.029)
11/06/05	1	0	204.142.987	16.331.439	0	0	0	0
11/07/05	1	0	204.142.987	16.331.439	0	0	0	0
11/08/05	1	13.092.669	204.142.987	16.331.439	12.122.842	(16.596.170.038)	969.827	(1.327.693.603)
11/09/05	1	0	192.020.146	15.361.612	0	0	0	0
11/10/05	1	0	192.020.146	15.361.612	0	0	0	0
11/11/05	1	12.504.679	192.020.146	15.361.612	11.578.407	(14.785.625.108)	926.273	(1.182.850.009)
11/12/05	1	0	180.441.739	14.435.339	0	0	0	0
11/01/06	1	0	180.441.739	14.435.339	0	0	0	0
11/02/06	1	11.861.609	180.441.739	14.435.339	10.982.971	(13.014.820.811)	878.638	(1.041.185.665)
11/03/06	1	0	169.458.768	13.556.701	0	0	0	0
11/04/06	1	0	169.458.768	13.556.701	0	0	0	0
11/05/06	1	11.301.185	169.458.768	13.556.701	10.464.060	(11.468.609.473)	837.125	(917.488.758)
11/06/06	1	0	158.994.708	12.719.577	0	0	0	0
11/07/06	1	0	158.994.708	12.719.577	0	0	0	0
11/08/06	1	10.673.031	158.994.708	12.719.577	9.882.436	(9.921.965.867)	790.595	(793.757.269)
11/09/06	1	0	149.112.272	11.928.982	0	0	0	0
11/10/06	1	0	149.112.272	11.928.982	0	0	0	0
11/11/06	1	10.144.666	149.112.272	11.928.982	9.393.210	(8.566.607.212)	751.457	(685.328.577)
11/12/06	1	0	139.719.062	11.177.525	0	0	0	0
11/01/07	1	0	139.719.062	11.177.525	0	0	0	0
11/02/07	1	9.575.029	139.719.062	11.177.525	8.865.768	(7.269.929.673)	709.261	(581.594.374)
11/03/07	1	0	130.853.294	10.468.264	0	0	0	0
11/04/07	1	0	130.853.294	10.468.264	0	0	0	0
11/05/07	1	9.097.088	130.853.294	10.468.264	8.423.229	(6.157.380.525)	673.858	(492.590.442)
11/06/07	1	0	122.430.065	9.794.405	0	0	0	0
11/07/07	1	0	122.430.065	9.794.405	0	0	0	0
11/08/07	1	8.582.502	122.430.065	9.794.405	7.946.762	(5.077.980.645)	635.741	(406.238.452)
11/09/07	1	0	114.483.304	9.158.664	0	0	0	0
11/10/07	1	0	114.483.304	9.158.664	0	0	0	0
11/11/07	1	8.151.185	114.483.304	9.158.664	7.547.393	(4.128.424.175)	603.791	(330.273.934)
11/12/07	1	0	106.935.910	8.554.873	0	0	0	0
11/01/08	1	0	106.935.910	8.554.873	0	0	0	0
11/02/08	1	7.604.531	106.935.910	8.554.873	6.639.658	(3.021.044.368)	964.873	(439.017.138)
11/03/08	1	0	100.296.252	7.590.000	0	0	0	0
11/04/08	1	0	100.296.252	7.590.000	0	0	0	0
11/05/08	1	7.180.001	100.296.252	7.590.000	7.180.001	(2.620.700.433)	0	0
11/06/08	1	0	93.116.251	7.590.000	0	0	0	0
11/07/08	1	0	93.116.251	7.590.000	0	0	0	0
11/08/08	1	6.588.116	93.116.251	7.590.000	6.588.116	(1.798.555.577)	0	0
11/09/08	1	0	86.528.136	7.590.000	0	0	0	0
11/10/08	1	0	86.528.136	7.590.000	0	0	0	0
11/11/08	1	6.166.088	86.528.136	7.590.000	6.166.088	(1.116.061.996)	0	0
11/12/08	1	0	80.362.047	7.590.000	0	0	0	0
11/01/09	1	0	80.362.047	7.590.000	0	0	0	0
11/02/09	1	5.746.932	80.362.047	7.590.000	5.746.932	(511.476.929)	0	0
11/03/09	1	0	74.615.115	7.590.000	0	0	0	0
11/04/09	1	0	74.615.115	7.590.000	0	0	0	0
11/05/09	1	82.205.115	74.615.115	7.590.000	74.615.115	0	7.590.000	0