



# **FONDO DE TITULIZACIÓN HIPOTECARIA HIPOTEBANSA VIII**

**Francisco Fortes Clavero**  
**Analyst**  
**Santander de Titulización**  
**Ciudad Grupo Santander**  
**Ed. Encinar 28660 Boadilla del Monte**  
**[ffortes@gruposantander.com](mailto:ffortes@gruposantander.com)**  
**Tel: +34 91 289 32 90**



**FONDO DE TITULIZACION HIPOTECARIA : HIPOTEBANSA 8**

**I. DATA OF THE FUND**

Constitution Date	December 17th 1998.	Paying Agent	Banco Santander	
Disbursement Date	December 22th 1998.	Negotiation Market	AIAF	
Final Date of Redemption	December 15th 2028.	Rating Agencies	Fitch IBCA Moody's España	
Gestora	Santander de Titulización	Calification	Inicial	Actual
MP's Seller	Banco Santander	Class A	AAA/Aaa	AAA/Aaa
SWAP Counterparty	Banco Santander	Class B	A/A2	A+/A2

**II. SECURITIES ISSUED CHARGED TO THE FUND: SECURITISATION BONDS**

CLASS PRIORITY	NUMBER OF BONDS		NOMINAL		
			INITIAL	CURRENT	%Cur//Ini
Class A		Nominal per Bond	150.253,03	20.298,08 €	
(ISIN=ES0315227001)	2.126	Total Nominal	319.437.933,48	43.153.718,08 €	13,51%
Class B		Nominal per Bond	150.253,03	73.141,88 €	
(ISIN=ES0315227019)	59	Total Nominal	8.864.928,54	4.315.370,92 €	48,68%

REDEMPTION AND INTEREST OF THE BONDS			
	Current		Next
Current Redemption Date	15/09/2008	Next Coupon Date	15/12/2008
Principal accrued per Bond and not paid	0	Interest Rate	Serie A- 5,2969% Serie B- 5,8343%
Bullet	NO		
Class A Redemption	1.048,62 €	Gross Interest	Serie A- 268,06 €
Class B Redemption	3.778,62 €	Next Coupon Date	Serie B- 1.063,91 €
Class A Gross Interest	281,94 €	Net Interest	Serie A- 219,81 €
Class B Gross Interest	1.118,98 €	Next Coupon Date	Serie B- 872,40 €

**III. ASSET PURCHASED BY THE FUND: MORTGAGES PARTICIPATIONS**

<b>MORTGAGES PARTICIPATION</b>	<b>ISSUE DATE</b>	<b>CURRENT DATE</b>
Number of loans	5.730	1.737
Credit Rights Outstanding Balance to be amortised	328.303.109,52 €	47.469.082,72 €
Credit Rights Outstanding Balance per loan to be amortised	57.295,48 €	27.328,20 €
Rate Interest	5,28%	5,56%

<b>PREPAYMENT RATE</b>	<b>CURRENT SITUATION</b>
Monthly Single Rate	2,28%
Average Monthly Single Rate	9,88%
Constant Prepayment Rate from Constitution	11,32%



**FONDO DE TITULIZACIÓN HIPOTECARIA  
HIPOTEBANSA VIII**

**QUARTERLY BTH'S PAYOUT REPORT**

Report date: September 15th, 2008

<b>BONDS PRINCIPAL</b>	
PREVIOUS BALANCE:	49.921.393,70 €
PRINCIPAL AMORTISED:	2.452.304,70 €
OUTSTANDING BALANCE:	47.469.089,00 €
% OF INITIAL BALANCE:	14,46%
PRINCIPAL ACCRUED NOT PAID:	0,00

<b>DATA</b>	
Determination Date	September 5, 2008
Payment Date	September 15, 2008
Last Payment Date	June 16, 2008
Num of Days (Act/360)	91
3 Months Libor(%)	4,95438%
Next Payment Date	December 15, 2008

<b>ACUMULATIVE INTEREST PAID TO</b>	
BTH'S HOLDERS AS OF PREVIOUS PAYMENT DATE:	59.934.610,83 €
INTEREST PAID ON September 15th, 2008	665.424,26 €
CUMULATIVE INTEREST PAID TO BTH'S HOLDERS UP TO DATE:	60.600.035,09 €

<b>RESIDUAL LIFE (YEARS)</b>		
	Initial	September 15, 2008
Class A	7,2	1,47
Class B	13,6	1,49



**FONDO DE TITULIZACIÓN HIPOTECARIA  
HIPOTEBANSA VIII**

**QUARTERLY COLLATERAL REPORT**

Report date: September 15th, 2008

<b>MP'S PRINCIPAL</b>	
PREVIOUS BALANCE:	49.921.401,77 €
PRINCIPAL AMORTISED:	2.452.319,05 €
OUTSTANDING BALANCE:	47.469.082,72 €
NUMBER OF LOANS:	1.737
LTV	17,43%

<b>INTEREST</b>	
INTEREST RECEIVED DURING RELEVANT PERIOD:	655.544,61
INTEREST ACCRUED DURING RELEVANT PERIOD:	663.164,07

<b>TRANSITORY PROPERTY</b>	
OUTSTANDING BALANCE:	0,00 €
NUM OF TRANSIT. PRO.:	0

<b>MP'S IN ARREARS</b>					
<b>MP'S IN ARREARS</b>	<b>UP TO 30 DAYS</b>	<b>30 TO 60 DAYS</b>	<b>60 TO 90 DAYS</b>	<b>90 TO 180 DAYS</b>	<b>OVER 180 DAYS</b>
PRINCIPAL BALANCE IN ARREARS:	516,71 €	5.383,93 €	347,83 €	0,00 €	0,00 €
INTEREST ACCRUED ON PH'S IN ARREARS:	44,23 €	1.891,01 €	0,00 €	0,00 €	0,00 €
OUTSTANDING BALANCE:	14.661,23 €	608.409,72 €	115.933,66 €	0,00 €	66.696,58 €
NUMBER OF LOANS:	2	19	3	0	5
% OF OUTSTANDING BALANCE	0,03%	1,28%	0,24%	0,00%	0,14%

*This Report does not include loans in arrears from 0 to 15 days, as it is considered a technical arrear with a high percentage of recovery.*

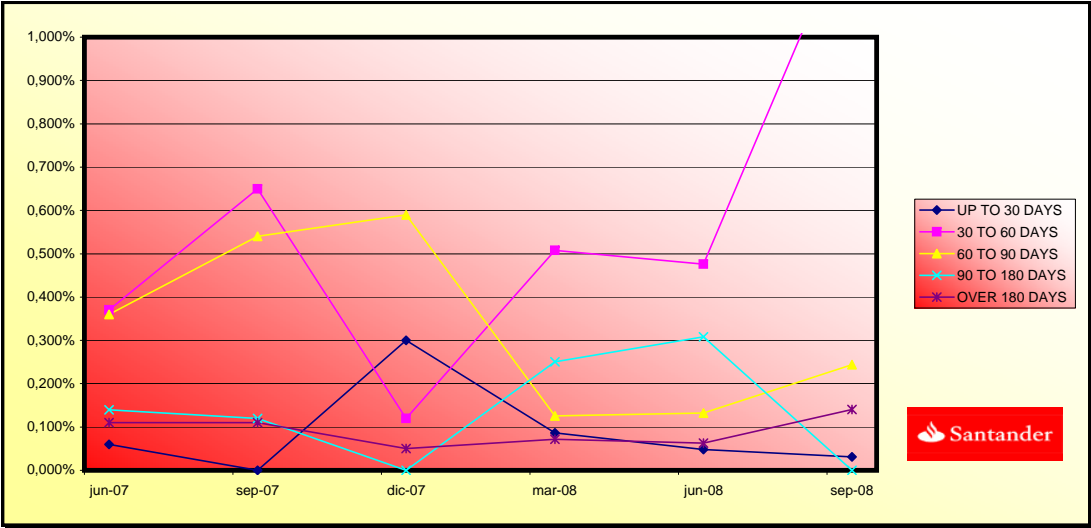
<b>LTV</b>				
	<b>OUTS. BALANCE</b>	<b>% OUTSTANDING</b>	<b>NUMBER LOANS</b>	<b>% NUM LOANS</b>
0-9,99	8.510,35 €	17,95%	660	37,99%
10-19,99	20.138,54 €	42,48%	691	39,78%
20-29,99	16.479,02 €	34,76%	355	20,43%
30-39,99	2.258,72 €	4,76%	30	1,72%
40-49,99	15,73 €	0,03%	1	0,05%
50-59,99	0,00 €	0,00%	0	0,00%
60-69,99	0,00 €	0,00%	0	0,00%
70-79,99	0,00 €	0,00%	0	0,00%
>80	0,00 €	0,00%	0	0,00%



**FONDO DE TITULIZACIÓN HIPOTECARIA  
HIPOTEBANSA VIII**

Report date: September 15th, 2008

ARREARS PERFORMANCE						
	10/06/2007	10/09/2007	10/12/2007	10/03/2008	10/06/2008	05/09/2008
<b>UP TO 30 DAYS</b>	0,060%	0,000%	0,300%	0,087%	0,048%	0,031%
<b>30 TO 60 DAYS</b>	0,370%	0,650%	0,120%	0,508%	0,476%	1,282%
<b>60 TO 90 DAYS</b>	0,360%	0,540%	0,590%	0,125%	0,132%	0,244%
<b>90 TO 180 DAYS</b>	0,140%	0,120%	0,000%	0,251%	0,308%	0,000%
<b>OVER 180 DAYS</b>	0,110%	0,110%	0,050%	0,072%	0,063%	0,141%





**FONDO DE TITULIZACIÓN HIPOTECARIA  
HIPOTEBANSA VIII**

**QUARTERLY REPORT - ALLOCATION OF CASH**

Report date: September 15th, 2008

<b>TOTAL CASH RECEIVED END OF PERIOD:</b>		<b>3.148.413,15 €</b>
<b>a) CASH RECEIVED - PRINCIPAL</b>		
1. AMORTIZATION OF PH'S:		2.450.317,18 €
<b>b) CASH RECEIVED - INTEREST</b>		
1. INTEREST RECEIVED FROM MP'S:		655.544,61 €
2. INTEREST RECEIVED UNDER GIC:		39.798,14 €
<b>c) CONTENTIUS COLLECTION</b>		<b>2.753,22 €</b>

<b>TOTAL CASH PAID END OF PERIOD:</b>		<b>3.148.413,15 €</b>
<b>1. CURRENT EXPENSES:</b>		
2. NET INTEREST UNDER CLASS A SWAP:		-48.758,76 €
3. INTEREST PAID TO BTH'S A HOLDERS:		599.404,44 €
4. AMORTIZATION OF BTH'S A:		2.452.304,70 €
5. NET INTEREST UNDER CLASS B SWAP:		-10.955,26 €
6. INTEREST PAID TO BTH'S B HOLDERS:		66.019,82 €
7. INTEREST PAID ON SUBORDINATED LOAN:		18.642,77 €
8. REPAYMENT OF SUBORDINATED LOAN:		37.765,71 €
9. FEE IN FAVOUR OF SANTANDER		58.961,28 €
10. UTILIZATIONS OF PRINCIPAL AND SECONDARY RESERVE FUND:		-37.765,71 €

<b>TREASURY ACCOUNT STATEMENT</b>		<b>1.551.781,04 €</b>
<b>a) RELATED TO THE PRINCIPAL RESERVE FUND</b>		
1. PREVIOUS BALANCE:		619.025,38 €
2. PERIOD UTILIZATION:		-30.408,75 €
3. OUTSTANDING BALANCE:		588.616,63 €
<b>b) RELATED TO THE SECONDARY RESERVE FUND</b>		
1. PREVIOUS PERIOD RETENCION:		970.521,37 €
2. PERIOD UTILIZATION:		-7.356,96 €
3. OUTSTANDING BALANCE:		963.164,41 €
<b>c) WITHHOLDING ON BTH'S INTEREST TO BE PAID</b>		<b>0,00 €</b>



**FONDO DE TITULIZACIÓN HIPOTECARIA  
HIPOTEBANSA VIII**

**CREDIT ENHANCEMENT AND SUBORDINATED LOAN**

Report date: September 15th, 2008

<b>CREDIT ENHANCEMENT</b>		
<b>CONCEPTS</b>	<b>22/12/1998</b>	<b>September 15, 2008</b>
<b>SUBORDINATED ISSUE</b>	2,70%	9,09%
<b>PRINCIPAL RESERVE FUND</b>	4.070.955,49 €(1,24%)	588.616,63(1,24%)
<b>SECONDARY RESERVE FUND</b>	1.805.665,74 €(0,55%)	970.521,37(2,03%)
<b>EXCESS SPREAD</b>	0,65%	0,65%

<b>SUBORDINATED LOAN</b>		
<b>CONCEPTS</b>	<b>22/12/1998</b>	<b>September 15, 2008</b>
<b>TOTAL OUTSTANDING</b>	6.999.386,97 €	1.553.212,19 €
<b>INTEREST RATE</b>	4,63	4,91





FONDO DE TITULIZACIÓN HIPOTECARIA  
HIPOTEBANSA VIII

TRIGGERS

Report date: September 15th, 2008

CLASS B REDEMPTION	
IF 1) IS HIGHER THAN 2) CLASS B IS NOT AMORTISED	
1) MP'S IN ARREARS OVER 90 DAYS	66.696,58 €
2) 7% MP'S OUTSTANDING BALANCE	3.322.835,79 €

CLASS B IS AMORTISED

**PREPAYMENTS - HIPOTEBANSA VIII**

September 15, 2008

Date	Outstanding before prepayment 0,166386	Real outstanding	1,00% Prepayment vector	Remaining at the end of the month	Average Single monthly mortality	CPR	Monthly Single monthly mortality	CPR	Outstanding after prepayment
						11,39%		9,88%	
1	328.303,1		100,00%	100,00%					328.303,1
2	1-ene-99	327.099,8	324.774,7	99,00%	99,29%	0,71%	8,20%	0,71%	323.840,2
3	1-feb-99	325.891,2	322.035,2	98,02%	98,82%	0,59%	6,89%	0,48%	319.428,5
4	1-mar-99	324.677,2	318.871,9	97,04%	98,21%	0,60%	6,96%	0,61%	315.067,4
5	1-abr-99	323.458,0	315.254,0	96,07%	97,46%	0,64%	7,42%	0,76%	310.756,3
6	1-may-99	322.233,3	312.636,8	95,12%	97,02%	0,60%	7,00%	0,45%	306.494,8
7	1-jun-99	321.003,3	310.219,2	94,17%	96,64%	0,57%	6,61%	0,39%	302.282,2
8	1-jul-99	319.768,4	306.315,7	93,23%	95,79%	0,61%	7,10%	0,88%	298.118,7
9	1-ago-99	318.528,1	303.968,7	92,30%	95,43%	0,58%	6,78%	0,38%	294.003,1
10	1-sep-99	317.282,2	302.078,6	91,38%	95,21%	0,54%	6,34%	0,23%	289.934,9
11	1-oct-99	316.031,0	299.040,4	90,47%	94,62%	0,55%	6,42%	0,61%	285.913,6
12	1-nov-99	314.774,2	295.825,4	89,57%	93,98%	0,56%	6,55%	0,68%	281.938,8
13	1-dic-99	313.511,8	293.273,5	88,68%	93,54%	0,55%	6,46%	0,46%	278.009,9
14	1-ene-00	312.244,0	288.901,9	87,79%	92,52%	0,60%	6,92%	1,09%	274.126,4
15	1-feb-00	310.970,5	285.830,5	86,92%	91,92%	0,60%	6,97%	0,66%	270.287,8
16	1-mar-00	309.691,4	282.881,4	86,05%	91,34%	0,60%	6,99%	0,62%	266.493,7
17	1-abr-00	308.406,8	279.693,0	85,19%	90,69%	0,61%	7,07%	0,72%	262.743,6
18	1-may-00	307.116,4	276.956,5	84,34%	90,18%	0,61%	7,04%	0,56%	259.037,1
19	1-jun-00	305.820,4	274.158,8	83,50%	89,65%	0,61%	7,03%	0,59%	255.373,5
20	1-jul-00	304.519,7	269.788,1	82,67%	88,59%	0,64%	7,36%	1,17%	251.753,4
21	1-ago-00	303.213,3	265.998,8	81,85%	87,73%	0,65%	7,56%	0,98%	248.175,4
22	1-sep-00	301.901,2	263.416,1	81,03%	87,25%	0,65%	7,50%	0,54%	244.639,1
23	1-oct-00	300.583,3	261.530,4	80,23%	87,01%	0,63%	7,31%	0,28%	241.143,9
24	1-nov-00	299.259,6	259.951,5	79,43%	86,86%	0,61%	7,08%	0,16%	237.689,5
25	1-dic-00	297.930,1	257.382,3	78,63%	86,39%	0,61%	7,05%	0,55%	234.275,5
26	1-ene-01	296.595,0	253.846,8	77,85%	85,59%	0,62%	7,20%	0,93%	230.901,5
27	1-feb-01	295.254,1	250.678,5	77,08%	84,90%	0,63%	7,28%	0,80%	227.567,1
28	1-mar-01	293.907,2	247.405,3	76,31%	84,18%	0,64%	7,37%	0,85%	224.271,6
29	1-abr-01	292.554,5	244.333,0	75,55%	83,52%	0,64%	7,43%	0,79%	221.014,8
30	1-may-01	291.195,8	241.627,7	74,79%	82,98%	0,64%	7,43%	0,65%	217.796,1
31	1-jun-01	289.831,1	239.231,8	74,05%	82,54%	0,64%	7,39%	0,53%	214.615,3
32	1-jul-01	288.461,0	235.542,8	73,31%	81,66%	0,65%	7,55%	1,07%	211.472,2
33	1-ago-01	287.084,9	232.144,3	72,58%	80,86%	0,66%	7,66%	0,97%	208.366,1
34	1-sep-01	285.702,7	229.852,5	71,86%	80,45%	0,66%	7,60%	0,51%	205.296,5
35	1-oct-01	284.314,5	226.825,2	71,14%	79,78%	0,66%	7,66%	0,84%	202.263,1
36	1-nov-01	282.920,1	224.355,6	70,43%	79,30%	0,66%	7,64%	0,60%	199.265,5
37	1-dic-01	281.519,6	220.002,5	69,73%	78,15%	0,68%	7,89%	1,45%	196.303,2
38	1-ene-02	280.113,9	216.525,1	69,03%	77,30%	0,69%	8,01%	1,09%	193.376,6
39	1-feb-02	278.702,0	213.322,5	68,35%	76,54%	0,70%	8,10%	0,98%	190.484,6
40	1-mar-02	277.283,9	210.772,1	67,67%	76,01%	0,70%	8,09%	0,69%	187.626,8
41	1-abr-02	275.859,5	208.152,7	66,99%	75,46%	0,70%	8,10%	0,73%	184.802,9
42	1-may-02	274.428,9	204.446,9	66,32%	74,50%	0,72%	8,26%	1,27%	182.012,5
43	1-jun-02	272.992,0	201.084,3	65,66%	73,66%	0,73%	8,36%	1,13%	179.255,2
44	1-jul-02	271.549,9	197.632,6	65,01%	72,78%	0,74%	8,49%	1,19%	176.531,5
45	1-ago-02	270.101,6	194.571,4	64,36%	72,04%	0,74%	8,56%	1,02%	173.840,1
46	1-sep-02	268.646,8	192.391,2	63,72%	71,61%	0,74%	8,52%	0,59%	171.180,8
47	1-oct-02	267.185,6	189.734,9	63,08%	71,01%	0,74%	8,54%	0,84%	168.553,2
48	1-nov-02	265.718,0	186.207,6	62,46%	70,08%	0,75%	8,68%	1,32%	165.957,0
49	1-dic-02	264.244,0	183.383,7	61,83%	69,40%	0,76%	8,73%	0,97%	163.391,7
50	1-ene-03	262.767,9	179.522,5	61,22%	68,32%	0,77%	8,91%	1,56%	160.859,9
51	1-feb-03	261.285,3	176.640,3	60,61%	67,60%	0,78%	8,97%	1,05%	158.358,4
52	1-mar-03	259.796,2	173.695,7	60,00%	66,86%	0,79%	9,04%	1,10%	155.886,8
53	1-abr-03	258.300,5	171.781,2	59,41%	66,50%	0,78%	8,98%	0,53%	153.444,9
54	1-may-03	256.798,3	168.774,8	58,81%	65,72%	0,79%	9,07%	1,18%	151.032,3
55	1-jun-03	255.289,4	165.879,9	58,23%	64,98%	0,80%	9,14%	1,13%	148.648,6
56	1-jul-03	253.801,8	162.667,2	57,65%	64,09%	0,81%	9,25%	1,36%	146.309,8

57	1-ago-03	252.307,6	159.583,4	57,07%	63,25%	0,81%	9,35%	1,31%	14,69%	143.999,0
58	1-sep-03	250.806,8	157.836,5	56,50%	62,93%	0,81%	9,29%	0,50%	5,87%	141.716,1
59	1-oct-03	249.299,5	155.484,2	55,94%	62,37%	0,81%	9,31%	0,89%	10,22%	139.460,6
60	1-nov-03	247.785,5	151.070,7	55,38%	60,97%	0,84%	9,57%	2,24%	23,85%	137.232,4
61	1-dic-03	246.264,8	148.466,0	54,83%	60,29%	0,84%	9,63%	1,12%	12,61%	135.031,0
62	1-ene-04	244.750,9	144.181,1	54,29%	58,91%	0,86%	9,89%	2,29%	24,23%	132.863,6
63	1-feb-04	243.230,3	141.450,7	53,74%	58,16%	0,87%	9,96%	1,28%	14,33%	130.722,4
64	1-mar-04	241.703,1	139.526,7	53,21%	57,73%	0,87%	9,94%	0,74%	8,49%	128.607,1
65	1-abr-04	240.169,1	136.041,0	52,68%	56,64%	0,88%	10,11%	1,88%	20,32%	126.517,5
66	1-may-04	238.628,4	133.342,0	52,15%	55,88%	0,89%	10,19%	1,35%	15,06%	124.453,2
67	1-jun-04	237.080,9	131.087,8	51,63%	55,29%	0,89%	10,21%	1,05%	11,88%	122.413,9
68	1-jul-04	235.541,8	129.049,6	51,12%	54,79%	0,89%	10,22%	0,91%	10,41%	120.407,3
69	1-ago-04	233.995,9	126.740,5	50,61%	54,16%	0,90%	10,26%	1,14%	12,86%	118.425,1
70	1-sep-04	232.443,2	120.081,8	50,11%	51,66%	0,95%	10,85%	4,62%	43,32%	116.467,0
71	1-oct-04	230.883,7	117.674,7	49,61%	50,97%	0,96%	10,91%	1,34%	14,97%	114.532,8
72	1-nov-04	229.317,3	115.106,8	49,11%	50,20%	0,97%	11,00%	1,51%	16,73%	112.622,2
73	1-dic-04	227.744,1	113.483,0	48,62%	49,83%	0,96%	10,96%	0,73%	8,41%	110.734,9
74	1-ene-05	226.177,6	110.418,3	48,14%	48,82%	0,98%	11,12%	2,03%	21,78%	108.877,4
75	1-feb-05	224.604,3	108.164,9	47,66%	48,16%	0,98%	11,17%	1,35%	15,10%	107.042,6
76	1-mar-05	223.024,1	105.899,0	47,18%	47,48%	0,99%	11,23%	1,40%	15,58%	105.230,3
77	1-abr-05	221.436,9	104.153,6	46,71%	47,04%	0,99%	11,23%	0,94%	10,75%	103.440,2
78	1-may-05	219.842,7	102.143,6	46,25%	46,46%	0,99%	11,26%	1,22%	13,68%	101.672,2
79	1-jun-05	218.241,5	100.158,7	45,79%	45,89%	0,99%	11,29%	1,22%	13,74%	99.925,9
80	1-jul-05	216.648,4	98.055,6	45,33%	45,26%	1,00%	11,34%	1,38%	15,36%	98.208,0
81	1-ago-05	215.048,4	96.136,0	44,88%	44,70%	1,00%	11,38%	1,23%	13,78%	96.511,2
82	1-sep-05	213.441,2	94.617,9	44,43%	44,33%	1,00%	11,35%	0,84%	9,61%	94.835,4
83	1-oct-05	211.827,1	93.261,9	43,99%	44,03%	1,00%	11,31%	0,68%	7,89%	93.180,3
84	1-nov-05	210.205,8	91.161,9	43,55%	43,37%	1,00%	11,38%	1,50%	16,56%	91.545,7
85	1-dic-05	208.577,4	89.308,3	43,12%	42,82%	1,00%	11,41%	1,27%	14,20%	89.931,3
86	1-ene-06	206.951,9	87.421,3	42,69%	42,24%	1,01%	11,45%	1,34%	14,99%	88.341,3
87	1-feb-06	205.319,2	85.627,5	42,26%	41,70%	1,01%	11,49%	1,27%	14,25%	86.771,0
88	1-mar-06	203.679,4	83.842,5	41,84%	41,16%	1,02%	11,52%	1,30%	14,49%	85.220,2
89	1-abr-06	202.032,4	82.099,3	41,42%	40,64%	1,02%	11,56%	1,28%	14,33%	83.688,7
90	1-may-06	200.378,1	80.700,2	41,01%	40,27%	1,02%	11,54%	0,89%	10,20%	82.176,3
91	1-jun-06	198.716,5	78.608,3	40,60%	39,56%	1,03%	11,63%	1,78%	19,37%	80.682,8
92	1-jul-06	197.076,8	77.361,9	40,20%	39,25%	1,02%	11,60%	0,77%	8,82%	79.219,7
93	1-ago-06	195.429,9	75.928,8	39,80%	38,85%	1,02%	11,60%	1,03%	11,63%	77.774,8
94	1-sep-06	193.775,8	74.801,2	39,40%	38,60%	1,02%	11,56%	0,64%	7,46%	76.348,0
95	1-oct-06	192.114,3	73.641,8	39,01%	38,33%	1,01%	11,52%	0,70%	8,07%	74.939,2
96	1-nov-06	190.445,6	72.294,3	38,62%	37,96%	1,01%	11,52%	0,97%	11,03%	73.547,9
97	1-dic-06	188.769,5	70.734,4	38,23%	37,47%	1,02%	11,55%	1,29%	14,42%	72.174,2
98	1-ene-07	187.103,7	69.108,7	37,85%	36,94%	1,02%	11,59%	1,43%	15,86%	70.824,4
99	1-feb-07	185.430,5	67.689,7	37,48%	36,50%	1,02%	11,61%	1,17%	13,17%	69.491,6
100	1-mar-07	183.750,0	66.705,8	37,10%	36,30%	1,02%	11,56%	0,55%	6,43%	68.175,6
101	1-abr-07	182.062,0	65.495,7	36,73%	35,97%	1,02%	11,55%	0,90%	10,32%	66.876,2
102	1-may-07	180.366,7	64.489,1	36,37%	35,75%	1,01%	11,50%	0,61%	7,09%	65.593,2
103	1-jun-07	178.663,8	63.339,0	36,00%	35,45%	1,01%	11,49%	0,85%	9,71%	64.326,5
104	1-jul-07	176.965,2	62.096,4	35,65%	35,09%	1,01%	11,49%	1,02%	11,59%	63.080,0
105	1-ago-07	175.259,2	60.696,5	35,29%	34,63%	1,01%	11,52%	1,30%	14,56%	61.849,3
106	1-sep-07	173.545,6	60.072,2	34,94%	34,61%	1,01%	11,42%	0,05%	0,61%	60.634,3
107	1-oct-07	171.824,5	59.296,8	34,59%	34,51%	1,00%	11,35%	0,30%	3,57%	59.434,7
108	1-nov-07	170.095,8	58.528,3	34,25%	34,41%	0,99%	11,28%	0,29%	3,46%	58.250,5
109	1-dic-07	168.359,5	58.065,3	33,90%	34,49%	0,98%	11,16%	-0,23%	-2,82%	57.081,3
110	1-ene-08	166.636,2	55.447,2	33,57%	33,27%	1,00%	11,41%	3,52%	34,96%	55.934,0
111	1-feb-08	164.905,4	53.765,1	33,23%	32,60%	1,01%	11,51%	2,02%	21,68%	54.801,5
112	1-mar-08	163.166,9	53.000,0	32,90%	32,48%	1,01%	11,45%	0,37%	4,38%	53.683,4
113	1-abr-08	161.420,8	51.747,9	32,57%	32,06%	1,01%	11,48%	1,31%	14,60%	52.579,7
114	1-may-08	159.667,0	50.580,2	32,25%	31,68%	1,01%	11,49%	1,18%	13,31%	51.490,1
115	1-jun-08	157.905,5	49.921,4	31,93%	31,61%	1,01%	11,42%	2,39%	20,99%	50.414,6
116	1-jul-08	156.348,7	48.995,3	31,61%	31,34%	1,00%	11,40%	0,88%	10,04%	49.420,2
117	1-ago-08	154.785,0	48.047,8	31,29%	31,04%	1,00%	11,40%	0,94%	10,75%	48.438,4
118	1-sep-08	153.214,5	47.469,1	30,98%	30,98%	1,00%	11,32%	0,19%	2,28%	47.469,1

DEAL 54.625  
 MEZZ. DECLINN 10,00%  
 MEZZ. STOPS DECLINN 1,00%  
 VIDA RESIDUAL DESDE 5-sep-08

1,47

1,49

FECHA	PRINCIPAL AVAILABLE	SENIOR NOTES	MEZZANIE NOTES	SERIE A		SERIE B	
				PRINCIPAL	VIDA MEDIA	PRINCIPAL	VIDA MEDIA
			328.302.862,02				
		319.437.933	8.864.929				
8-ene-99		0 319.437.933	8.864.929	0	0	0	0
8-feb-99	1	0 319.437.933	8.864.929	0	0	0	0
8-mar-99	1	13.235.745 319.437.933	8.864.929	13.235.745	-45.914.801.128	0	0
8-abr-99	1	0 306.202.188	8.864.929	0	0	0	0
8-may-99	1	0 306.202.188	8.864.929	0	0	0	0
8-jun-99	1	12.785.116 306.202.188	8.864.929	12.785.116	-43.175.337.630	0	0
8-jul-99	1	0 293.417.072	8.864.929	0	0	0	0
8-ago-99	1	0 293.417.072	8.864.929	0	0	0	0
8-sep-99	1	12.347.373 293.417.072	8.864.929	12.347.373	-40.561.120.939	0	0
8-oct-99	1	0 281.069.699	8.864.929	0	0	0	0
8-nov-99	1	0 281.069.699	8.864.929	0	0	0	0
8-dic-99	1	11.925.016 281.069.699	8.864.929	11.925.016	-38.088.501.187	0	0
8-ene-00	1	0 269.144.682	8.864.929	0	0	0	0
8-feb-00	1	0 269.144.682	8.864.929	0	0	0	0
8-mar-00	1	11.516.112 269.144.682	8.864.929	11.516.112	-35.734.495.282	0	0
8-abr-00	1	0 257.628.571	8.864.929	0	0	0	0
8-may-00	1	0 257.628.571	8.864.929	0	0	0	0
8-jun-00	1	11.120.247 257.628.571	8.864.929	11.120.247	-33.483.062.974	0	0
8-jul-00	1	0 246.508.324	8.864.929	0	0	0	0
8-ago-00	1	0 246.508.324	8.864.929	0	0	0	0
8-sep-00	1	10.734.447 246.508.324	8.864.929	10.734.447	-31.333.849.834	0	0
8-oct-00	1	0 235.773.877	8.864.929	0	0	0	0
8-nov-00	1	0 235.773.877	8.864.929	0	0	0	0
8-dic-00	1	10.363.586 235.773.877	8.864.929	10.363.586	-29.308.221.025	0	0
8-ene-01	1	0 225.410.291	8.864.929	0	0	0	0
8-feb-01	1	0 225.410.291	8.864.929	0	0	0	0
8-mar-01	1	10.003.831 225.410.291	8.864.929	10.003.831	-27.390.489.832	0	0
8-abr-01	1	0 215.406.460	8.864.929	0	0	0	0
8-may-01	1	0 215.406.460	8.864.929	0	0	0	0
8-jun-01	1	9.656.372 215.406.460	8.864.929	9.656.372	-25.550.759.201	0	0
8-jul-01	1	0 205.750.088	8.864.929	0	0	0	0
8-ago-01	1	0 205.750.088	8.864.929	0	0	0	0
8-sep-01	1	9.318.762 205.750.088	8.864.929	9.318.762	-23.800.117.023	0	0
8-oct-01	1	0 196.431.327	8.864.929	0	0	0	0
8-nov-01	1	0 196.431.327	8.864.929	0	0	0	0
8-dic-01	1	8.993.305 196.431.327	8.864.929	8.993.305	-22.150.510.136	0	0
8-ene-02	1	0 187.438.022	8.864.929	0	0	0	0
8-feb-02	1	0 187.438.022	8.864.929	0	0	0	0
8-mar-02	1	8.676.376 187.438.022	8.864.929	8.676.376	-20.589.039.364	0	0
8-abr-02	1	0 178.761.646	8.864.929	0	0	0	0
8-may-02	1	0 178.761.646	8.864.929	0	0	0	0
8-jun-02	1	8.371.612 178.761.646	8.864.929	8.371.612	-19.095.647.349	0	0
8-jul-02	1	0 170.390.034	8.864.929	0	0	0	0
8-ago-02	1	0 170.390.034	8.864.929	0	0	0	0
8-sep-02	1	8.074.395 170.390.034	8.864.929	8.074.395	-17.674.851.634	0	0
8-oct-02	1	0 162.315.639	8.864.929	0	0	0	0

DEAL 54.625  
 MEZZ. DECLINN 10,00%  
 MEZZ. STOPS DECLINN 1,00%  
 VIDA RESIDUAL DESDE 5-sep-08

1,47

1,49

				SERIE A			SERIE B		
8-nov-02	1	0	162.315.639	8.864.929	0	0	0	0	
8-dic-02	1	7.789.079	162.315.639	8.864.929	7.789.079	-16.341.488.003	0	0	
8-ene-03	1	0	154.526.560	8.864.929	0	0	0	0	
8-feb-03	1	0	154.526.560	8.864.929	0	0	0	0	
8-mar-03	1	7.504.942	154.526.560	8.864.929	7.504.942	-15.069.922.638	0	0	
8-abr-03	1	0	147.021.618	8.864.929	0	0	0	0	
8-may-03	1	0	147.021.618	8.864.929	0	0	0	0	
8-jun-03	1	7.238.152	147.021.618	8.864.929	7.238.152	-13.868.299.299	0	0	
8-jul-03	1	0	139.783.466	8.864.929	0	0	0	0	
8-ago-03	1	0	139.783.466	8.864.929	0	0	0	0	
8-sep-03	1	6.932.590	139.783.466	8.864.929	6.932.590	-12.645.044.335	0	0	
8-oct-03	1	0	132.850.876	8.864.929	0	0	0	0	
8-nov-03	1	0	132.850.876	8.864.929	0	0	0	0	
8-dic-03	1	6.685.017	132.850.876	8.864.929	6.685.017	-11.585.133.598	0	0	
8-ene-04	1	0	126.165.859	8.864.929	0	0	0	0	
8-feb-04	1	0	126.165.859	8.864.929	0	0	0	0	
8-mar-04	1	6.423.920	126.165.859	8.864.929	6.423.920	-10.548.077.361	0	0	
8-abr-04	1	0	119.741.939	8.864.929	0	0	0	0	
8-may-04	1	0	119.741.939	8.864.929	0	0	0	0	
8-jun-04	1	6.193.170	119.741.939	8.864.929	6.193.170	-9.599.413.102	0	0	
8-jul-04	1	0	113.548.769	8.864.929	0	0	0	0	
8-ago-04	1	0	113.548.769	8.864.929	0	0	0	0	
8-sep-04	1	5.946.969	113.548.769	8.864.929	5.946.969	-8.670.680.354	0	0	
8-oct-04	1	0	107.601.800	8.864.929	0	0	0	0	
8-nov-04	1	0	107.601.800	8.864.929	0	0	0	0	
8-dic-04	1	5.732.067	107.601.800	8.864.929	5.732.067	-7.835.735.436	0	0	
8-ene-05	1	0	101.869.734	8.864.929	0	0	0	0	
8-feb-05	1	0	101.869.734	8.864.929	0	0	0	0	
8-mar-05	1	5.504.614	101.869.734	8.864.929	5.504.614	-7.029.392.305	0	0	
8-abr-05	1	0	96.365.119	8.864.929	0	0	0	0	
8-may-05	1	0	96.365.119	8.864.929	0	0	0	0	
8-jun-05	1	5.304.423	96.365.119	8.864.929	5.304.423	-6.285.741.163	0	0	
8-jul-05	1	0	91.060.696	8.864.929	0	0	0	0	
8-ago-05	1	0	91.060.696	8.864.929	0	0	0	0	
8-sep-05	1	5.090.458	91.060.696	8.864.929	4.846.908	-5.297.670.741	243.550	-266.199.841	
8-oct-05	1	0	86.213.788	8.621.379	0	0	0	0	
8-nov-05	1	0	86.213.788	8.621.379	0	0	0	0	
8-dic-05	1	4.904.102	86.213.788	8.621.379	4.458.274	-4.467.190.823	445.827	-446.719.082	
8-ene-06	1	0	81.755.514	8.175.551	0	0	0	0	
8-feb-06	1	0	81.755.514	8.175.551	0	0	0	0	
8-mar-06	1	4.711.129	81.755.514	8.175.551	4.282.845	-3.905.954.286	428.284	-390.595.429	
8-abr-06	1	0	77.472.669	7.747.267	0	0	0	0	
8-may-06	1	0	77.472.669	7.747.267	0	0	0	0	
8-jun-06	1	4.537.398	77.472.669	7.747.267	4.124.907	-3.382.423.630	412.491	-338.242.363	
8-jul-06	1	0	73.347.762	7.334.776	0	0	0	0	
8-ago-06	1	0	73.347.762	7.334.776	0	0	0	0	
8-sep-06	1	4.334.738	73.347.762	7.334.776	3.940.671	-2.868.808.572	394.067	-286.880.857	
8-oct-06	1	0	69.407.091	6.940.709	0	0	0	0	
8-nov-06	1	0	69.407.091	6.940.709	0	0	0	0	
8-dic-06	1	4.173.865	69.407.091	6.940.709	3.794.423	-2.417.047.175	379.442	-241.704.718	
8-ene-07	1	0	65.612.669	6.561.267	0	0	0	0	

DEAL 54.625  
 MEZZ. DECLINN 10,00%  
 MEZZ. STOPS DECLINN 1,00%  
 VIDA RESIDUAL DESDE 5-sep-08

1,47

1,49

				SERIE A		SERIE B	
8-feb-07	1	0	65.612.669	6.561.267	0	0	0
8-mar-07	1	3.998.608	65.612.669	6.561.267	3.635.098	-1.988.398.836	363.510
8-abr-07	1	0	61.977.570	6.197.757	0	0	0
8-may-07	1	0	61.977.570	6.197.757	0	0	0
8-jun-07	1	3.849.094	61.977.570	6.197.757	3.499.176	-1.592.125.291	349.918
8-jul-07	1	0	58.478.394	5.847.839	0	0	0
8-ago-07	1	0	58.478.394	5.847.839	0	0	0
8-sep-07	1	3.692.192	58.478.394	5.847.839	3.356.538	-1.218.423.417	335.654
8-oct-07	1	0	55.121.856	5.512.186	0	0	0
8-nov-07	1	0	55.121.856	5.512.186	0	0	0
8-dic-07	1	3.552.988	55.121.856	5.512.186	3.229.989	-878.557.012	322.999
8-ene-08	1	0	51.891.867	5.189.187	0	0	0
8-feb-08	1	0	51.891.867	5.189.187	0	0	0
8-mar-08	1	3.397.906	51.891.867	5.189.187	3.089.006	-559.110.059	308.901
8-abr-08	1	0	48.802.861	4.880.286	0	0	0
8-may-08	1	0	48.802.861	4.880.286	0	0	0
8-jun-08	1	3.268.748	48.802.861	4.880.286	2.971.590	-264.471.467	297.159
8-jul-08	1	0	45.831.271	4.583.127	0	0	0
8-ago-08	1	0	45.831.271	4.583.127	0	0	0
8-sep-08	1	2.945.566	45.831.271	4.583.127	2.677.787	8.033.361	267.779
8-oct-08	1	0	43.153.484	4.315.348	0	0	0
8-nov-08	1	0	43.153.484	4.315.348	0	0	0
8-dic-08	1	2.834.063	43.153.484	4.315.348	2.576.421	242.183.604	257.642
8-ene-09	1	0	40.577.063	4.057.706	0	0	0
8-feb-09	1	0	40.577.063	4.057.706	0	0	0
8-mar-09	1	2.624.075	40.577.063	4.057.706	2.385.522	438.936.100	238.552
8-abr-09	1	0	38.191.540	3.819.154	0	0	0
8-may-09	1	0	38.191.540	3.819.154	0	0	0
8-jun-09	1	2.524.605	38.191.540	3.819.154	2.295.095	633.446.275	229.510
8-jul-09	1	0	35.896.445	3.589.645	0	0	0
8-ago-09	1	0	35.896.445	3.589.645	0	0	0
8-sep-09	1	2.414.121	35.896.445	3.589.645	2.107.504	775.561.529	306.617
8-oct-09	1	0	33.788.941	3.283.028	0	0	0
8-nov-09	1	0	33.788.941	3.283.028	0	0	0
8-dic-09	1	2.321.828	33.788.941	3.283.028	2.321.828	1.065.719.198	0
8-ene-10	1	0	31.467.113	3.283.028	0	0	0
8-feb-10	1	0	31.467.113	3.283.028	0	0	0
8-mar-10	1	2.215.370	31.467.113	3.283.028	2.215.370	1.216.237.976	0
8-abr-10	1	0	29.251.743	3.283.028	0	0	0
8-may-10	1	0	29.251.743	3.283.028	0	0	0
8-jun-10	1	32.535.019	29.251.743	3.283.028	29.251.743	18.750.367.323	3.283.028