



F.T.A. UCI 6

O CTIC'LQUG'J GTGPEKCU
CPCN[UV
UCPVCPF GT'F'G'VKWVK CEKQP.'UI (HW.'UC0
EKWF CF'I TWRQ'UCPVCPF GT
4: 882''DQCF KNC'F GN'O QP VG
o lj gt gpekuB i twr quepvcpf gt @qo
Vgr'! 56; 34: ; 5522



NAME OF THE FUND:

F.T.A. UCI 6

INFORMATION AT:

QUARTER/SEMESTER:

February 18, 2013 - May 16, 2013

YEAR:

2013

Acting on behalf of Santander de Titulización S.G.F.T., S.A. as General Manager:	Signature:
IGNACIO ORTEGA GAVARA - GENERAL MANAGER	

I. DATA OF THE FUND

Constitution Date	June 19, 2000	Paying Agent	BANCO SANTANDER	
Disbursement Date	June 22, 2000	Negotiation Market	AIAF	
Final Date of Redemption	November 16, 2030	Ratings Agencies	MOODY'S ESPAÑA	
Management Company	SANTANDER DE TITULIZACION, S.G.F.T, S.A.	Rating	Initial	Current
Credit Rights's Seller	UNION DE CREDITOS INMOBILIARIOS	CLASS A	Aaa	A3
		CLASS B	A2	Baa3

II. SECURITIES ISSUED CHARGED TO THE FUND: SECURITISATION BONDS

CLASS PRIORITY ISIN CODE	NUM BONDS	NOMINAL			
			Initial	Current	%Act/In
CLASS A ES0338558002	4.364	Nominal per Bond	100.000,00	9.834,38	
		Total Nominal	436.400.000,00	42.917.234,32	9,83 %
CLASS B ES0338558010	206	Nominal per Bond	100.000,00	22.184,43	
		Total Nominal	20.600.000,00	4.569.992,58	22,18 %

REDEMPTION AND INTEREST OF THE BONDS					
Current			Next		
Payment Date of the Current Period May 16, 2013			Next Payment Date August 16, 2013		
	Redemption of the Bonds	Gross Interest	Interest Rate	Gross Interest Next Coupon	Net Interest Next Coupon
CLASS A	300,35 €	12,76 €	0,5049 %	12,52 €	9,89 €
CLASS B	0,00 €	53,67 €	0,9916 %	55,45 €	43,81 €
Accrued amortisation due not payed	0,00 €				
Scheduled Amortisation	NO				



III. ASSET PURCHASED BY THE FUND: CREDIT RIGHTS

CREDIT RIGHTS	ISSUE DATE	CURRENT DATE
Number of CR's	13.139	2.577
CR's Outstanding to be amortised	457.000.004,15	47.487.232,88
CR's Outstanding per Loan to be amortised	34.781,95	18.427,33
Interest Rate	5,00 %	2,16 %

PREPAYMENT RATE	CURRENT SITUATION
Monthly Single Rate	3,28 %
Average Monthly Single Rate	4,68 %
Constant Prepayment Rate from Constitution	12,30 %

CURRENT DELINQUENCY	Up to 1 month	From 1 to 6 months	Greater than 6 months
Debt Due (Principal + Interest)	23.485,81	14.766,40	72.481,27
Debt to be amortised	0,00	0,00	47.402.835,33
Total Debt	23.485,81	14.766,40	47.475.316,60

F.T.A. UCI 6**QUARTERLY BONDS PAYOUT REPORT****16th, May 2013**

BONDS. PRINCIPAL	
Previous Balance	48.797.954,36 €
Principal Amortised	1.310.727,40 €
Outstanding Balance	47.487.226,96 €
% of Initial Balance	10,39%
Principal accrued and unpaid	0,00 €

INTEREST PAID	
CLASS A	55.684,64 €
CLASS B	11.056,02 €
Interest accrued and unpaid	0,00 €

DATA	
Determination Date	05/08/2013
Payment Date	05/16/2013
Last Payment Date	02/18/2013
Number of Days (Act/360)	87
Reference Interest Rate (%)	0,203%
Next Payment Date	08/16/2013

RESIDUAL LIFE (YEARS)		
	INITIAL	05/16/2013
CLASS A	6,2	0,49
CLASS B	9,8	0,50

F.T.A. UCI 6**QUARTERLY COLLATERAL REPORT**

16th, May 2013

PRINCIPAL	
Previous Balance	48.797.974,06 €
Principal Amortised	1.310.741,18 €
Outstanding Balance	47.487.232,88 €
Number of Credit Rights	2.577

INTEREST	
Interest received during relevant period	283.458,77 €
Interest accrued during relevant period	277.495,98 €

PRINCIPAL BALANCE IN ARREARS					
	UP to 30 DAYS	30 to 60 DAYS	60 to 90 DAYS	90 to 180 DAYS	> 180 DAYS
Principal Balance in Arrears	18.683,34 €	6.492,98 €	1.046,46 €	4.759,13 €	53.415,64 €
Interest accrued on Credit Rights in Arrears	4.802,47 €	1.129,43 €	433,84 €	904,56 €	19.065,63 €
Outstanding Balance	3.180.625,00 €	409.141,24 €	106.678,37 €	129.511,66 €	508.850,48 €
Number of Credit Rights	135	17	4	7	34
% of Outstanding Balance	6,70%	0,86%	0,22%	0,27%	1,07%

TRANSITORY PROPERTIES	
Last balance	0,00 €
Difference in Actual Period	0,00 €
Current balance	0,00 €
Transitory properties CR's number	0

F.T.A. UCI 6

QUARTERLY REPORT - ALLOCATION OF CASH

16th, May 2013

TOTAL CASH RECEIVED END OF PERIOD	1.618.906,27 €
CASH RECEIVED - PRINCIPAL	
Amortisation of Credit Rights	1.310.741,18 €
CASH RECEIVED - INTEREST	
Interest received from Credit Rights	283.458,77 €
Interest received under GIC	40,12 €
INCOMES/EXPENSES OF JUDICIAL	24.814,29 €
RESERVE FUNDS	
OTHERS	-148,09 €

TOTAL CASH PAID END OF PERIOD	1.618.906,27 €
ORDINARY EXPENSES	491,68 €
MANAGEMENT FEE	10.357,50 €
INTEREST PAID TO CLASS A	55.684,64 €
INTEREST PAID TO CLASS B	11.056,02 €
REDEMPTION PAID CLASS A	1.310.727,40 €
REDEMPTION PAID CLASS B	0,00 €
INTEREST SUBORDINATED LOAN SANTANDER	7.246,26 €
INTEREST SUBORDINATED LOAN UCB	7.246,26 €
ADMINISTRATION FEE	6.000,00 €
VARIABLE FEE	210.096,51 €

TREASURY ACCOUNT STATEMENT	4.570.000,04 €
PRINCIPAL RESERVE FUND	
Previous Balance	4.570.000,04 €
Period utilization	0,00 €
Outstanding Balance	4.570.000,04 €
WITHHOLDING TAXES	0,00 €
ISSUE EXPENSES WITHHELD	0,00 €
OTHERS	0,00 €

F.T.A. UCI 6

CREDIT ENHANCEMENT AND SUBORDINATED LOAN

16th, May 2013

CREDIT ENHANCEMENT		
CONCEPTS	INITIAL	16th, May 2013
SUBORDINATED ISSUE	95,49 %	9,62%
PRINCIPAL RESERVE FUND	9.597.000,00 € 2,10%	4.570.000,04 € 9,62%

SUBORDINATED LOANS		
CONCEPTS	INITIAL	16th, May 2013
SUBORDINATED LOAN A SANTANDER		
Total Outstanding Subordinated Loan	5.410.010,46 €	2.285.788,65 €
Interest Rate	2,650 %	1,06%
SUBORDINATED LOAN A UCB		
Total Outstanding Subordinated Loan	5.410.010,46 €	2.285.788,65 €
Interest Rate	2,650 %	1,06%

F.T.A. UCI 6

DEFINITIONS

DETERMINATION DATE Means the date in which the Gestora will carry out the necessary calculations, on behalf of the Fund, for the distribution of the available funds at this date, according with the Order of Priority of Payments.

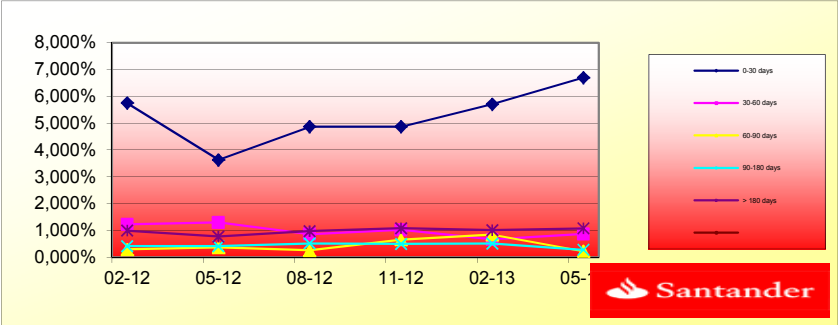
All the information regarding the Assets (Outstanding Balance of the Credit Rights, arrears' tables, transitory properties, stratification tables, etc.) are referred to this mentioned date.

TRANSITORY PROPERTIES Those assets in the balance of the Fund as a consequence of a judicial or non-judicial process.

**FONDO DE TITULIZACIÓN HIPOTECARIA
UCI 6**

HISTORICAL ARREARS REPORT

Data	02-12	05-12	08-12	11-12	02-13	05-13
0-30 days	5,746%	3,631%	4,868%	4,865%	5,705%	6,698%
30-60 days	1,221%	1,295%	0,858%	1,017%	0,659%	0,862%
60-90 days	0,291%	0,365%	0,253%	0,655%	0,837%	0,225%
90-180 days	0,412%	0,409%	0,510%	0,495%	0,504%	0,273%
> 180 days	0,990%	0,765%	0,968%	1,080%	1,004%	1,072%



TRIGGERS

TRIGGERS BONDS

1. IF 1.a) IS HIGHER THAN 1.b) THERE IS NO REDEMPTION OF CLASS B:

1.a) CR'S IN ARREARS OVER 90 DAYS	638.362,14 €
1.b) 7% CR'S OUTSTANDING BALANCE	3.324.106,30 €

THE CLASS B BONDS ARE ON THE MINIMUM LEVEL PERMITTED

TRIGGERS RESERVE FUND

1. IF 1.a) IS HIGHER THAN 1.b) THERE IS NO REDEMPTION OF RESERVE FUND:

1.a) CR'S IN ARREARS OVER 90 DAYS	N/A
1.b) 3% CR'S OUTSTANDING BALANCE	N/A

2. IF 2.a) IS LOWER THAN 2.b) THERE IS NO REDEMPTION OF RESERVE FUND:

2.a) WEIGHTED AVERAGE RATE CR'S	N/A
2.b) WEIGHTED AVERAGE RATE BONDS A AND B + 0,40%	N/A

3. IF 3.a) IS HIGHER THAN 3.b) THERE IS NO REDEMPTION OF RESERVE FUND:

3.a) WRITTE OFF	N/A
3.b) 0,025% INITIAL OUTSTANDING BALANCE CR'S *N/A PAYMENT DATES	N/A

THE RESERVE FUND IS ON THE MINIMUM LEVEL PERMITTED

**FONDO DE TITULIZACIÓN HIPOTECARIA
UCI 6**

L.T.V.

LTV (%)	SALDO VIVO	%	NÚMERO	% PRESTAMOS
LTV (%)	OUTS. BALANC	% OUTSTANDING	LOANS	% LOANS
0,00-9,99	951.123,10	2,2568%	187	11,9489%
10,00 - 19,99	3.017.355,64	7,1596%	187	11,9489%
20,00 - 29,99	7.654.427,39	18,1624%	319	20,3834%
30,00 - 39,99	9.978.857,01	23,6778%	314	20,0639%
40,00 - 49,99	10.852.824,12	25,7515%	308	19,6805%
50,00 - 59,99	9.109.706,79	21,6155%	237	15,1438%
60,00 - 69,99	580.095,90	1,3764%	13	0,8307%

F.T.A.: UCI 6

Counterpart

Agreement	Counterpart	Rating Agency	Minimum rating	Current rating
Treasury account	Banco Santander S.A.	Moody's	S/T: P-1	P-2

COUNTERPARTY DOES NOT HAVE THE MINIMUM RATING REQUIRED. TREASURY ACCOUNT HAS BEEN TRANSFERRED TO A COUNTERPARTY WITH MINIMUM RATING REQUIRED.

UCI 6

Date	Real Outstanding	1,09%	Remaining at the end of the month	Average Single monthly mortality	CPR	Monthly Single monthly mortality	CPR	
		Prepayment vector						
							4,68%	
julio-00	457.000.004,2	456.040.916,0	100,00%	100,00%	0,64%	7,40%	0,64%	7,40%
agosto-00	456.040.916,0	455.077.826,1	98,91%	99,36%	0,69%	7,96%	0,74%	8,52%
septiembre-00	455.077.826,1	448.828.507,4	97,84%	98,63%	0,61%	7,08%	0,45%	5,28%
octubre-00	454.110.683,2	445.856.137,4	96,77%	98,18%	0,56%	6,51%	0,41%	4,79%
noviembre-00	453.139.470,2	443.087.649,1	95,72%	97,78%	0,58%	6,76%	0,67%	7,75%
diciembre-00	452.164.170,0	439.171.130,0	94,68%	97,13%	0,56%	6,54%	0,46%	5,41%
enero-01	451.184.765,4	436.191.628,6	93,65%	96,68%	0,59%	6,87%	0,77%	8,85%
febrero-01	450.201.239,2	431.891.179,4	92,63%	95,93%	0,59%	6,90%	0,61%	7,09%
marzo-01	449.213.573,9	428.312.545,1	90,62%	95,35%	0,62%	7,17%	0,81%	9,35%
abril-01	448.221.752,3	423.886.429,0	89,64%	94,57%	0,67%	7,77%	1,15%	12,98%
mayo-01	447.225.756,7	418.072.840,2	88,66%	93,48%	0,67%	7,74%	0,64%	7,43%
junio-01	446.225.569,6	414.462.703,6	87,70%	92,88%	0,68%	7,86%	0,80%	9,14%
julio-01	445.221.173,5	410.239.612,2	86,74%	92,14%	0,70%	8,05%	0,90%	10,31%
agosto-01	444.212.550,4	405.614.216,5	85,80%	91,31%	0,73%	8,37%	1,10%	12,43%
septiembre-01	443.199.682,8	400.238.316,5	84,86%	90,31%	0,74%	8,47%	0,87%	9,92%
octubre-01	442.182.552,7	395.859.610,6	83,94%	89,52%	0,75%	8,61%	0,94%	10,69%
noviembre-01	441.161.142,1	391.241.620,9	83,03%	88,68%	0,77%	8,88%	1,15%	12,97%
diciembre-01	440.135.433,2	385.838.182,2	82,12%	87,66%	0,79%	9,07%	1,09%	12,30%
enero-02	439.105.407,7	380.748.736,1	81,23%	86,71%	0,81%	9,31%	1,21%	13,55%
febrero-02	438.071.047,5	375.271.007,5	80,35%	85,66%	0,83%	9,50%	1,16%	13,05%
marzo-02	437.032.334,3	370.042.745,41	79,47%	84,67%	0,85%	9,72%	1,25%	13,99%
abril-02	435.989.249,9	364.551.475,1	78,61%	83,61%	0,86%	9,90%	1,20%	13,53%
mayo-02	434.941.775,9	359.297.389,6	77,75%	82,61%	0,88%	10,08%	1,25%	14,03%
junio-02	433.889.893,8	353.940.719,2	76,90%	81,57%	0,91%	10,36%	1,50%	16,56%
julio-02	432.833.585,0	347.793.248,4	76,07%	80,35%	0,92%	10,55%	1,34%	14,90%
agosto-02	431.774.155,1	342.309.563,3	75,24%	79,28%	0,94%	10,72%	1,34%	14,98%
septiembre-02	430.710.266,9	336.877.719,2	74,42%	78,21%	0,94%	10,75%	1,01%	11,50%
octubre-02	429.641.901,5	332.638.740,1	73,61%	77,42%	0,95%	10,82%	1,11%	12,57%
noviembre-02	428.569.040,0	328.113.486,4	72,81%	76,56%	0,95%	10,82%	0,95%	10,85%
diciembre-02	427.491.663,6	324.171.387,7	72,02%	75,83%	0,97%	11,06%	1,61%	17,69%
enero-03	426.409.753,2	318.147.224,8	71,23%	74,61%	0,98%	11,10%	1,10%	12,45%
	425.324.271,8	313.840.105,4		73,79%				

Date	Real Outstanding	1,09%	Remaining at the end of the month	Average Single monthly mortality	CPR	Monthly Single monthly mortality	CPR	
		Prepayment vector						
							4,68%	
febrero-03	424.234.222,3	308.434.679,1	70,46%	72,70%	0,99%	11,27%	1,47%	16,28%
marzo-03	423.139.585,5	302.052.495,6	69,69%	71,38%	1,02%	11,54%	1,82%	19,74%
abril-03	422.040.342,2	296.379.448,4	68,93%	70,23%	1,03%	11,73%	1,62%	17,82%
mayo-03	420.936.472,8	290.615.261,4	68,18%	69,04%	1,05%	11,93%	1,69%	18,47%
junio-03	419.827.958,0	284.645.570,9	67,44%	67,80%	1,07%	12,15%	1,80%	19,54%
julio-03	418.717.512,0	276.839.156,1	66,71%	66,12%	1,11%	12,56%	2,48%	26,06%
agosto-03	417.602.392,7	267.980.363,8	65,98%	64,17%	1,16%	13,07%	2,94%	30,11%
septiembre-03	416.482.580,7	261.911.338,7	65,26%	62,89%	1,18%	13,30%	2,00%	21,55%
octubre-03	415.358.056,2	254.035.675,0	64,55%	61,16%	1,22%	13,71%	2,74%	28,39%
noviembre-03	414.228.799,2	246.480.453,8	63,85%	59,50%	1,26%	14,10%	2,71%	28,08%
diciembre-03	413.094.790,0	239.591.881,9	63,16%	58,00%	1,29%	14,41%	2,53%	26,45%
enero-04	411.956.645,0	232.532.574,9	62,47%	56,45%	1,32%	14,75%	2,68%	27,80%
febrero-04	410.813.710,2	227.850.234,3	61,79%	55,46%	1,33%	14,85%	1,74%	19,00%
marzo-04	409.665.965,6	222.469.311,6	61,12%	54,31%	1,35%	15,03%	2,09%	22,37%
abril-04	408.513.391,0	217.788.596,9	60,45%	53,31%	1,36%	15,13%	1,83%	19,86%
mayo-04	407.355.965,9	211.304.679,0	59,79%	51,87%	1,39%	15,43%	2,70%	28,01%
junio-04	406.193.669,9	206.609.961,4	59,14%	50,86%	1,40%	15,55%	1,94%	20,97%
julio-04	405.030.380,6	201.387.274,7	58,50%	49,72%	1,42%	15,73%	2,25%	23,88%
agosto-04	403.862.195,8	196.432.862,3	57,86%	48,64%	1,43%	15,88%	2,18%	23,22%
septiembre-04	402.689.094,9	193.264.517,0	57,23%	47,99%	1,43%	15,86%	1,33%	14,80%

Date	Real Outstanding	1,09%	Remaining at the end of the month	Average Single monthly mortality	CPR	Monthly Single monthly mortality	CPR	
		Prepayment vector						
							4,68%	
octubre-04	401.511.057,2	189.723.138,8	56,61%	47,25%	1,43%	15,89%	1,54%	17,04%
noviembre-04	400.328.061,9	186.369.970,8	55,99%	46,55%	1,43%	15,90%	1,48%	16,35%
diciembre-04	399.140.088,2	182.504.224,3	55,38%	45,72%	1,44%	15,96%	1,78%	19,42%
enero-05	397.949.157,2	178.392.645,5	54,78%	44,83%	1,45%	16,06%	1,96%	21,15%
febrero-05	396.753.214,3	174.837.087,6	54,19%	44,07%	1,45%	16,10%	1,70%	18,57%
marzo-05	395.552.238,6	171.903.827,8	53,60%	43,46%	1,45%	16,09%	1,38%	15,35%
abril-05	394.346.208,7	168.239.247,0	53,01%	42,66%	1,46%	16,16%	1,83%	19,90%
mayo-05	393.135.103,5	164.202.790,5	52,44%	41,77%	1,47%	16,27%	2,10%	22,47%
junio-05	391.918.901,5	160.739.959,7	51,87%	41,01%	1,47%	16,33%	1,81%	19,63%
julio-05	390.701.860,8	156.628.073,3	51,30%	40,09%	1,49%	16,46%	2,25%	23,94%
agosto-05	389.479.698,4	152.963.373,2	50,74%	39,27%	1,50%	16,55%	2,03%	21,85%
septiembre-05	388.252.392,8	150.814.394,0	50,19%	38,84%	1,49%	16,48%	1,09%	12,36%
octubre-05	387.019.922,2	147.200.821,1	49,64%	38,03%	1,50%	16,58%	2,09%	22,34%
noviembre-05	385.782.265,0	144.039.594,3	49,10%	37,34%	1,50%	16,63%	1,83%	19,91%
diciembre-05	384.539.399,3	141.159.654,6	48,57%	36,71%	1,51%	16,66%	1,68%	18,42%
enero-06	383.297.061,2	138.445.593,2	48,04%	36,12%	1,51%	16,67%	1,60%	17,65%
febrero-06	382.049.494,9	135.044.659,8	47,52%	35,35%	1,52%	16,77%	2,14%	22,84%
marzo-06	380.796.678,4	132.300.064,1	47,00%	34,74%	1,52%	16,79%	1,71%	18,70%
abril-06	379.538.589,7	129.075.221,0	46,49%	34,01%	1,53%	16,88%	2,11%	22,62%
mayo-06	378.275.206,6	126.639.279,5	45,98%	33,48%	1,53%	16,89%	1,56%	17,19%
junio-06	377.006.506,7	124.003.623,7	45,48%	32,89%	1,53%	16,92%	1,75%	19,11%
julio-06	375.739.564,1	120.891.562,8	44,99%	32,17%	1,54%	17,01%	2,18%	23,25%
agosto-06	374.467.289,9	118.426.272,7	44,50%	31,63%	1,54%	17,03%	1,71%	18,66%
septiembre-06	373.189.661,5	116.764.763,8	44,01%	31,29%	1,54%	16,97%	1,07%	12,06%
octubre-06	371.906.656,4	114.821.542,6	43,54%	30,87%	1,53%	16,94%	1,32%	14,79%
noviembre-06	370.618.252,0	112.351.017,3	43,06%	30,31%	1,54%	16,97%	1,81%	19,70%
diciembre-06	369.324.425,6	109.914.875,8	42,59%	29,76%	1,54%	17,01%	1,83%	19,84%
enero-07	368.030.272,9	107.970.795,4	42,13%	29,34%	1,54%	17,00%	1,42%	15,80%
febrero-07	366.730.674,0	106.255.615,9	41,67%	28,97%	1,54%	16,96%	1,24%	13,90%
marzo-07	365.425.606,0	105.031.432,5	41,22%	28,74%	1,53%	16,87%	0,80%	9,18%
abril-07	364.115.045,8	103.282.607,4	40,77%	28,37%	1,52%	16,84%	1,31%	14,65%
mayo-07	362.798.970,3	101.544.012,5	40,33%	27,99%	1,52%	16,81%	1,33%	14,81%
junio-07	361.477.356,4	100.393.799,9	39,89%	27,77%	1,51%	16,72%	0,77%	8,87%
julio-07	360.160.610,4	98.783.980,9	39,45%	27,43%	1,51%	16,69%	1,24%	13,95%
agosto-07	358.838.323,2	97.421.136,6	39,02%	27,15%	1,50%	16,63%	1,02%	11,54%
septiembre-07	357.510.471,3	96.000.767,8	38,60%	26,85%	1,50%	16,59%	1,09%	12,34%
octubre-07	356.177.031,4	94.815.177,8	38,18%	26,62%	1,49%	16,51%	0,87%	9,90%
noviembre-07	354.837.980,0	93.668.706,7	37,76%	26,40%	1,49%	16,44%	0,84%	9,59%
diciembre-07	353.493.293,3	92.475.277,8	37,35%	26,16%	1,48%	16,37%	0,90%	10,27%
enero-08	352.150.345,0	91.072.415,0	36,95%	25,86%	1,48%	16,33%	1,14%	12,87%

Date	Real Outstanding		1,09%	Remaining at the end of the month	Average Single monthly mortality	CPR	Monthly Single monthly mortality	CPR
			Prepayment vector					
								4,68%
febrero-08	350.801.745,0	90.178.994,2	36,54%	25,71%	1,47%	16,24%	0,60%	6,97%
marzo-08	349.447.469,8	88.957.504,4	36,15%	25,46%	1,46%	16,18%	0,97%	11,06%
abril-08	348.087.495,2	87.358.089,4	35,75%	25,10%	1,46%	16,18%	1,41%	15,71%
mayo-08	346.721.797,5	85.556.925,8	35,36%	24,68%	1,46%	16,20%	1,68%	18,36%
junio-08	345.350.352,4	84.237.854,7	34,98%	24,39%	1,46%	16,17%	1,15%	12,97%
julio-08	343.982.411,4	83.150.819,9	34,60%	24,17%	1,45%	16,11%	0,90%	10,26%
agosto-08	342.608.713,7	82.088.148,7	34,22%	23,96%	1,45%	16,05%	0,88%	10,09%
septiembre-08	341.229.234,9	81.307.334,0	33,85%	23,83%	1,44%	15,96%	0,55%	6,41%
octubre-08	339.843.950,8	80.607.800,6	33,48%	23,72%	1,43%	15,86%	0,46%	5,34%
noviembre-08	338.452.837,1	79.913.268,5	33,12%	23,61%	1,42%	15,76%	0,45%	5,32%
diciembre-08	337.055.869,0	79.110.607,2	32,76%	23,47%	1,41%	15,68%	0,59%	6,90%
enero-09	335.667.288,9	78.397.347,6	32,40%	23,36%	1,40%	15,59%	0,49%	5,74%
febrero-09	334.272.865,3	77.963.628,1	32,05%	23,32%	1,39%	15,46%	0,14%	1,65%
marzo-09	332.872.573,4	77.088.351,3	31,70%	23,16%	1,38%	15,40%	0,71%	8,16%
abril-09	331.466.388,7	76.151.863,4	31,35%	22,97%	1,38%	15,34%	0,80%	9,14%
mayo-09	330.054.286,3	75.640.093,4	31,01%	22,92%	1,37%	15,23%	0,25%	2,92%
junio-09	328.636.241,2	74.782.635,8	30,67%	22,76%	1,36%	15,17%	0,71%	8,16%
julio-09	327.233.118,9	74.079.720,5	30,34%	22,64%	1,35%	15,09%	0,52%	6,01%
agosto-09	325.824.091,8	73.119.413,8	30,01%	22,44%	1,35%	15,04%	0,87%	9,95%
septiembre-09	324.409.135,0	72.373.766,9	29,68%	22,31%	1,34%	14,97%	0,59%	6,83%
octubre-09	322.988.223,6	71.540.102,4	29,36%	22,15%	1,34%	14,91%	0,72%	8,27%
noviembre-09	321.561.332,5	70.843.524,9	29,04%	22,03%	1,33%	14,84%	0,53%	6,23%
diciembre-09	320.128.436,6	70.075.071,7	28,73%	21,89%	1,32%	14,78%	0,64%	7,44%
enero-10	318.700.982,4	69.407.998,1	28,41%	21,78%	1,32%	14,70%	0,51%	5,93%
febrero-10	317.267.521,0	68.883.690,5	28,10%	21,71%	1,31%	14,61%	0,31%	3,62%
marzo-10	315.828.027,1	68.079.926,9	27,80%	21,56%	1,30%	14,56%	0,72%	8,27%
abril-10	314.382.475,4	67.331.944,8	27,50%	21,42%	1,30%	14,50%	0,64%	7,46%
mayo-10	312.930.840,2	66.681.412,3	27,20%	21,31%	1,29%	14,44%	0,51%	5,91%
junio-10	311.473.096,1	65.850.842,7	26,90%	21,14%	1,29%	14,39%	0,78%	9,01%
julio-10	310.020.928,4	65.170.200,7	26,61%	21,02%	1,28%	14,33%	0,57%	6,63%
agosto-10	308.562.649,5	64.720.129,2	26,32%	20,97%	1,27%	14,24%	0,22%	2,62%
septiembre-10	307.098.233,7	64.222.840,5	26,03%	20,91%	1,26%	14,16%	0,30%	3,49%
octubre-10	305.627.655,1	63.659.901,9	25,75%	20,83%	1,26%	14,09%	0,40%	4,69%
noviembre-10	304.150.887,9	63.183.559,8	25,47%	20,77%	1,25%	14,00%	0,27%	3,15%
diciembre-10	302.667.905,9	62.574.931,8	25,19%	20,67%	1,24%	13,94%	0,48%	5,59%
enero-11	301.201.153,4	61.684.530,3	24,92%	20,48%	1,24%	13,91%	0,94%	10,75%
febrero-11	299.728.228,4	61.178.183,47	24,65%	20,41%	1,23%	13,84%	0,33%	3,93%
marzo-11	298.249.104,8	60.526.819,9	24,38%	20,29%	1,23%	13,79%	0,57%	6,68%
abril-11	296.763.756,6	60.037.298,6	24,11%	20,23%	1,22%	13,71%	0,31%	3,68%
mayo-11	295.272.157,5	59.570.470,7	23,85%	20,17%	1,21%	13,64%	0,28%	3,27%
junio-11	293.774.281,3	59.035.458,4	23,59%	20,10%	1,21%	13,57%	0,39%	4,61%

Date	Real Outstanding	1,09%	Remaining at the end of the month	Average Single monthly mortality	CPR	Monthly Single monthly mortality	CPR	
		Prepayment vector						
							4,68%	
julio-11	292.290.634,9	58.463.062,2	23,33%	20,00%	1,20%	13,52%	0,47%	5,46%
agosto-11	290.800.744,9	57.974.898,2	23,08%	19,94%	1,20%	13,45%	0,33%	3,85%
septiembre-11	289.304.584,9	57.499.936,9	22,83%	19,88%	1,19%	13,38%	0,31%	3,61%
octubre-11	287.802.128,6	56.961.821,9	22,58%	19,79%	1,18%	13,32%	0,42%	4,91%
noviembre-11	286.293.349,4	56.377.271,8	22,33%	19,69%	1,18%	13,27%	0,50%	5,89%
diciembre-11	284.778.220,8	55.786.401,7	22,09%	19,59%	1,17%	13,22%	0,52%	6,08%
enero-12	283.280.151,5	55.100.114,3	21,85%	19,45%	1,17%	13,18%	0,71%	8,17%
febrero-12	281.775.777,9	54.677.183,7	21,61%	19,40%	1,16%	13,11%	0,24%	2,82%
marzo-12	280.265.073,3	54.284.122,3	21,38%	19,37%	1,16%	13,04%	0,18%	2,18%
abril-12	278.748.011,2	53.747.585,9	21,15%	19,28%	1,15%	12,99%	0,45%	5,26%
mayo-12	277.224.564,7	53.349.080,2	20,92%	19,24%	1,15%	12,92%	0,20%	2,33%
junio-12	275.694.707,1	52.790.130,2	20,69%	19,15%	1,14%	12,87%	0,50%	5,82%
julio-12	274.190.230,1	52.297.273,1	20,46%	19,07%	1,14%	12,81%	0,39%	4,58%
agosto-12	272.679.421,7	51.801.946,8	20,24%	19,00%	1,13%	12,76%	0,40%	4,68%
septiembre-12	271.162.255,4	51.328.311,8	20,02%	18,93%	1,13%	12,70%	0,36%	4,23%
octubre-12	269.638.704,2	50.833.065,7	19,80%	18,85%	1,12%	12,65%	0,41%	4,76%
noviembre-12	268.108.741,5	50.318.615,1	19,59%	18,77%	1,12%	12,61%	0,45%	5,24%
diciembre-12	266.572.340,2	49.798.821,6	19,37%	18,68%	1,11%	12,56%	0,46%	5,41%
enero-13	265.051.533,3	49.234.420,4	19,16%	18,58%	1,11%	12,52%	0,57%	6,59%
febrero-13	263.524.326,2	48.797.974,1	18,95%	18,52%	1,10%	12,47%	0,31%	3,68%
marzo-13	261.990.692,2	48.327.204,1	18,75%	18,45%	1,10%	12,42%	0,39%	4,52%
abril-13	260.450.604,2	47.903.838,1	18,54%	18,39%	1,09%	12,36%	0,29%	3,42%
mayo-13	258.904.034,9	47.487.232,9	18,34%	18,34%	1,09%	12,30%	0,28%	3,28%

UCI 6

DEAL 457.000.000
 MEZZ. DECLINN 8,80%
 MEZZ. STOPS DECLINN 1,00%
 VIDA RESIDUAL DESDE 09/05/2013

FECHA		PRINCIPAL AVAILABLE	SENIOR NOTES	MEZZANIE NOTES	SERIE A PRINCIPAL	0,49	SERIE B PRINCIPAL	0,50
						VIDA MEDIA		VIDA MEDIA
			436.400.000,00	20.600.000,00				
08/07/2000		0	436.400.000,00	20.600.000,00	0	0	0	0
08/08/2000	1	0	436.400.000,00	20.600.000,00	0	0	0	0
08/09/2000	1	0	436.400.000,00	20.600.000,00	0	0	0	0
08/10/2000	1	0	436.400.000,00	20.600.000,00	0	0	0	0
08/11/2000	1	28.909.019	436.400.000,00	20.600.000,00	28.909.019	-131.969.672.376	0	0
08/12/2000	1	0	407.490.980,86	20.600.000,00	0	0	0	0
08/01/2001	1	0	407.490.980,86	20.600.000,00	0	0	0	0
08/02/2001	1	16.527.563	407.490.980,86	20.600.000,00	16.527.563	-73.927.787.477	0	0
09/03/2001	1	0	390.963.418,27	20.600.000,00	0	0	0	0
09/04/2001	1	0	390.963.418,27	20.600.000,00	0	0	0	0
09/05/2001	1	15.939.710	390.963.418,27	20.600.000,00	15.939.710	-69.863.749.150	0	0
09/06/2001	1	0	375.023.708,22	20.600.000,00	0	0	0	0
09/07/2001	1	0	375.023.708,22	20.600.000,00	0	0	0	0
09/08/2001	1	15.371.925	375.023.708,22	20.600.000,00	15.371.925	-65.960.929.507	0	0
09/09/2001	1	0	359.651.783,37	20.600.000,00	0	0	0	0
09/10/2001	1	0	359.651.783,37	20.600.000,00	0	0	0	0
09/11/2001	1	14.823.537	359.651.783,37	20.600.000,00	14.823.537	-62.244.032.870	0	0
09/12/2001	1	0	344.828.246,13	20.600.000,00	0	0	0	0
09/01/2002	1	0	344.828.246,13	20.600.000,00	0	0	0	0
09/02/2002	1	14.293.900	344.828.246,13	20.600.000,00	14.293.900	-58.705.045.507	0	0
09/03/2002	1	0	330.534.346,57	20.600.000,00	0	0	0	0
09/04/2002	1	0	330.534.346,57	20.600.000,00	0	0	0	0
09/05/2002	1	13.782.385	330.534.346,57	20.600.000,00	13.782.385	-55.377.624.872	0	0
09/06/2002	1	0	316.751.961,09	20.600.000,00	0	0	0	0
09/07/2002	1	0	316.751.961,09	20.600.000,00	0	0	0	0
09/08/2002	1	13.286.392	316.751.961,09	20.600.000,00	13.286.392	-52.162.376.168	0	0
09/09/2002	1	0	303.465.568,79	20.600.000,00	0	0	0	0
09/10/2002	1	0	303.465.568,79	20.600.000,00	0	0	0	0
09/11/2002	1	12.808.460	303.465.568,79	20.600.000,00	12.808.460	-49.107.637.278	0	0
09/12/2002	1	0	290.657.108,36	20.600.000,00	0	0	0	0
09/01/2003	1	0	290.657.108,36	20.600.000,00	0	0	0	0
09/02/2003	1	12.346.527	290.657.108,36	20.600.000,00	12.346.527	-46.200.702.663	0	0
09/03/2003	1	0	278.310.581,73	20.600.000,00	0	0	0	0
09/04/2003	1	0	278.310.581,73	20.600.000,00	0	0	0	0
09/05/2003	1	11.901.189	278.310.581,73	20.600.000,00	11.901.189	-43.475.043.167	0	0
09/06/2003	1	0	266.409.392,79	20.600.000,00	0	0	0	0
09/07/2003	1	0	266.409.392,79	20.600.000,00	0	0	0	0
09/08/2003	1	11.468.226	266.409.392,79	20.600.000,00	11.468.226	-40.838.354.172	0	0
09/09/2003	1	0	254.941.166,40	20.600.000,00	0	0	0	0
09/10/2003	1	0	254.941.166,40	20.600.000,00	0	0	0	0
09/11/2003	1	11.052.074	254.941.166,40	20.600.000,00	11.052.074	-38.339.645.562	0	0
09/12/2003	1	0	243.889.092,16	20.600.000,00	0	0	0	0
09/01/2004	1	0	243.889.092,16	20.600.000,00	0	0	0	0
09/02/2004	1	10.651.250	243.889.092,16	20.600.000,00	10.582.252	-35.736.265.364	68.998	-233.006.501
08/03/2004	1	0	233.306.840,05	20.531.001,92	0	0	0	0
08/04/2004	1	0	233.306.840,05	20.531.001,92	0	0	0	0
08/05/2004	1	10.264.654	233.306.840,05	20.531.001,92	9.434.424	-31.020.387.432	830.229	-2.729.794.094
08/06/2004	1	0	223.872.415,65	19.700.772,58	0	0	0	0
08/07/2004	1	0	223.872.415,65	19.700.772,58	0	0	0	0
08/08/2004	1	9.887.259	223.872.415,65	19.700.772,58	9.087.554	-29.043.822.491	799.705	-2.555.856.379
08/09/2004	1	0	214.784.861,68	18.901.067,83	0	0	0	0
08/10/2004	1	0	214.784.861,68	18.901.067,83	0	0	0	0
08/11/2004	1	9.525.290	214.784.861,68	18.901.067,83	8.754.862	-27.175.091.324	770.428	-2.391.408.036

FECHA		PRINCIPAL AVAILABLE	SENIOR NOTES	MEZZANIE NOTES	SERIE A PRINCIPAL	VIDA MEDIA	SERIE B PRINCIPAL	VIDA MEDIA
08/12/2004	1	0	206.029.999,78	18.130.639,98	0	0	0	0
08/01/2005	1	0	206.029.999,78	18.130.639,98	0	0	0	0
08/02/2005	1	9.175.848	206.029.999,78	18.130.639,98	8.433.684	-25.402.254.897	742.164	-2.235.398.431
09/03/2005	1	0	197.596.316,22	17.388.475,83	0	0	0	0
09/04/2005	1	0	197.596.316,22	17.388.475,83	0	0	0	0
09/05/2005	1	8.839.666	197.596.316,22	17.388.475,83	8.124.693	-23.740.352.837	714.973	-2.089.151.050
09/06/2005	1	0	189.471.623,26	16.673.502,85	0	0	0	0
09/07/2005	1	0	189.471.623,26	16.673.502,85	0	0	0	0
09/08/2005	1	8.511.866	189.471.623,26	16.673.502,85	7.823.407	-22.140.240.686	688.460	-1.948.341.180
09/09/2005	1	0	181.648.216,65	15.985.043,07	0	0	0	0
09/10/2005	1	0	181.648.216,65	15.985.043,07	0	0	0	0
09/11/2005	1	8.197.733	181.648.216,65	15.985.043,07	7.534.681	-20.629.957.566	663.052	-1.815.436.266
09/12/2005	1	0	174.113.535,29	15.321.991,11	0	0	0	0
09/01/2006	1	0	174.113.535,29	15.321.991,11	0	0	0	0
09/02/2006	1	7.891.166	174.113.535,29	15.321.991,11	7.252.910	-19.191.199.787	638.256	-1.688.825.581
09/03/2006	1	0	166.860.625,32	14.683.735,03	0	0	0	0
09/04/2006	1	0	166.860.625,32	14.683.735,03	0	0	0	0
09/05/2006	1	7.598.150	166.860.625,32	14.683.735,03	6.983.594	-17.857.049.562	614.556	-1.571.420.361
09/06/2006	1	0	159.877.031,44	14.069.178,77	0	0	0	0
09/07/2006	1	0	159.877.031,44	14.069.178,77	0	0	0	0
09/08/2006	1	7.311.702	159.877.031,44	14.069.178,77	6.720.315	-16.565.575.476	591.388	-1.457.770.642
09/09/2006	1	0	153.156.716,84	13.477.791,08	0	0	0	0
09/10/2006	1	0	153.156.716,84	13.477.791,08	0	0	0	0
09/11/2006	1	7.038.575	153.156.716,84	13.477.791,08	6.469.278	-15.351.597.030	569.296	-1.350.940.539
09/12/2006	1	0	146.687.438,70	12.908.494,61	0	0	0	0
09/01/2007	1	0	146.687.438,70	12.908.494,61	0	0	0	0
09/02/2007	1	6.773.815	146.687.438,70	12.908.494,61	6.225.933	-14.201.352.600	547.882	-1.249.719.029
09/03/2007	1	0	140.461.505,95	12.360.612,52	0	0	0	0
09/04/2007	1	0	140.461.505,95	12.360.612,52	0	0	0	0
09/05/2007	1	6.520.549	140.461.505,95	12.360.612,52	5.993.151	-13.136.987.476	527.397	-1.156.054.898
09/06/2007	1	0	134.468.354,73	11.833.215,22	0	0	0	0
09/07/2007	1	0	134.468.354,73	11.833.215,22	0	0	0	0
09/08/2007	1	6.270.076	134.468.354,73	11.833.215,22	5.762.938	-12.102.169.521	507.139	-1.064.990.918
09/09/2007	1	0	128.705.416,86	11.326.076,68	0	0	0	0
09/10/2007	1	0	128.705.416,86	11.326.076,68	0	0	0	0
09/11/2007	1	6.032.677	128.705.416,86	11.326.076,68	5.544.740	-11.133.838.086	487.937	-979.777.752
09/12/2007	1	0	123.160.676,78	10.838.139,56	0	0	0	0
09/01/2008	1	0	123.160.676,78	10.838.139,56	0	0	0	0
09/02/2008	1	5.802.198	123.160.676,78	10.838.139,56	5.332.902	-10.217.840.648	469.295	-899.169.977
08/03/2008	1	0	117.827.774,56	10.368.844,16	0	0	0	0
08/04/2008	1	0	117.827.774,56	10.368.844,16	0	0	0	0
08/05/2008	1	5.582.655	117.827.774,56	10.368.844,16	5.131.117	-9.374.550.069	451.538	-824.960.406
08/06/2008	1	0	112.696.657,94	9.917.305,90	0	0	0	0
08/07/2008	1	0	112.696.657,94	9.917.305,90	0	0	0	0
08/08/2008	1	5.367.122	112.696.657,94	9.917.305,90	4.933.017	-8.558.783.986	434.105	-753.172.991
08/09/2008	1	0	107.763.641,23	9.483.200,43	0	0	0	0
08/10/2008	1	0	107.763.641,23	9.483.200,43	0	0	0	0
08/11/2008	1	5.162.520	107.763.641,23	9.483.200,43	4.744.963	-7.795.974.212	417.557	-686.045.731
08/12/2008	1	0	103.018.678,23	9.065.643,68	0	0	0	0
08/01/2009	1	0	103.018.678,23	9.065.643,68	0	0	0	0
08/02/2009	1	4.959.085	103.018.678,23	9.065.643,68	4.557.983	-7.069.430.939	401.102	-622.109.923
09/03/2009	1	0	98.460.695,68	8.664.541,22	0	0	0	0
09/04/2009	1	0	98.460.695,68	8.664.541,22	0	0	0	0
09/05/2009	1	4.767.657	98.460.695,68	8.664.541,22	4.382.038	-6.402.156.825	385.619	-563.389.801
09/06/2009	1	0	94.078.658,15	8.278.921,92	0	0	0	0
09/07/2009	1	0	94.078.658,15	8.278.921,92	0	0	0	0
09/08/2009	1	4.574.934	94.078.658,15	8.278.921,92	4.204.902	-5.756.511.073	370.031	-506.572.974
09/09/2009	1	0	89.873.755,98	7.908.890,53	0	0	0	0
09/10/2009	1	0	89.873.755,98	7.908.890,53	0	0	0	0

FECHA		PRINCIPAL AVAILABLE	SENIOR NOTES	MEZZANIE NOTES	SERIE A PRINCIPAL	VIDA MEDIA	SERIE B PRINCIPAL	VIDA MEDIA
09/11/2009	1	4.395.657	89.873.755,98	7.908.890,53	4.040.126	-5.159.240.901	355.531	-454.013.199
09/12/2009	1	0	85.833.629,98	7.553.359,44	0	0	0	0
09/01/2010	1	0	85.833.629,98	7.553.359,44	0	0	0	0
09/02/2010	1	4.222.458	85.833.629,98	7.553.359,44	3.880.936	-4.598.908.720	341.522	-404.703.967
09/03/2010	1	0	81.952.694,35	7.211.837,10	0	0	0	0
09/04/2010	1	0	81.952.694,35	7.211.837,10	0	0	0	0
09/05/2010	1	4.058.793	81.952.694,35	7.211.837,10	3.730.508	-4.088.637.153	328.285	-359.800.069
09/06/2010	1	0	78.222.186,00	6.883.552,37	0	0	0	0
09/07/2010	1	0	78.222.186,00	6.883.552,37	0	0	0	0
09/08/2010	1	3.897.929	78.222.186,00	6.883.552,37	3.582.656	-3.596.986.188	315.274	-316.534.785
09/09/2010	1	0	74.639.530,44	6.568.278,68	0	0	0	0
09/10/2010	1	0	74.639.530,44	6.568.278,68	0	0	0	0
09/11/2010	1	3.746.026	74.639.530,44	6.568.278,68	3.443.039	-3.140.051.408	302.987	-276.324.524
09/12/2010	1	0	71.196.491,61	6.265.291,26	0	0	0	0
09/01/2011	1	0	71.196.491,61	6.265.291,26	0	0	0	0
09/02/2011	1	3.591.458	71.196.491,61	6.265.291,26	3.300.973	-2.706.797.553	290.486	-238.198.185
09/03/2011	1	0	67.895.518,99	5.974.805,67	0	0	0	0
09/04/2011	1	0	67.895.518,99	5.974.805,67	0	0	0	0
09/05/2011	1	3.448.249	67.895.518,99	5.974.805,67	3.169.347	-2.316.792.536	278.903	-203.877.743
09/06/2011	1	0	64.726.172,15	5.695.903,15	0	0	0	0
09/07/2011	1	0	64.726.172,15	5.695.903,15	0	0	0	0
09/08/2011	1	3.306.117	64.726.172,15	5.695.903,15	3.038.710	-1.941.735.817	267.406	-170.872.752
09/09/2011	1	0	61.687.461,95	5.428.496,65	0	0	0	0
09/10/2011	1	0	61.687.461,95	5.428.496,65	0	0	0	0
09/11/2011	1	3.174.064	61.687.461,95	5.428.496,65	2.917.338	-1.595.783.802	256.726	-140.428.975
09/12/2011	1	0	58.770.124,11	5.171.770,92	0	0	0	0
09/01/2012	1	0	58.770.124,11	5.171.770,92	0	0	0	0
09/02/2012	1	3.041.254	58.770.124,11	5.171.770,92	2.439.483	-1.109.964.940	601.771	-273.805.769
08/03/2012	1	0	56.330.640,72	4.570.000,00	0	0	0	0
08/04/2012	1	0	56.330.640,72	4.570.000,00	0	0	0	0
08/05/2012	1	2.918.549	56.330.640,72	4.570.000,00	2.918.549	-1.068.189.093	0	0
08/06/2012	1	0	53.412.091,29	4.570.000,00	0	0	0	0
08/07/2012	1	0	53.412.091,29	4.570.000,00	0	0	0	0
08/08/2012	1	2.792.333	53.412.091,29	4.570.000,00	2.792.333	-765.099.313	0	0
08/09/2012	1	0	50.619.758,03	4.570.000,00	0	0	0	0
08/10/2012	1	0	50.619.758,03	4.570.000,00	0	0	0	0
08/11/2012	1	2.677.456	50.619.758,03	4.570.000,00	2.677.456	-487.296.926	0	0
08/12/2012	1	0	47.942.302,40	4.570.000,00	0	0	0	0
08/01/2013	1	0	47.942.302,40	4.570.000,00	0	0	0	0
08/02/2013	1	2.564.687	47.942.302,40	4.570.000,00	2.564.687	-230.821.837	0	0
09/03/2013	1	0	45.377.615,31	4.570.000,00	0	0	0	0
09/04/2013	1	0	45.377.615,31	4.570.000,00	0	0	0	0
09/05/2013	1	2.460.387	45.377.615,31	4.570.000,00	2.460.387	0	0	0
09/06/2013	1	0	42.917.228,73	4.570.000,00	0	0	0	0
09/07/2013	1	0	42.917.228,73	4.570.000,00	0	0	0	0
09/08/2013	1	2.358.298	42.917.228,73	4.570.000,00	2.358.298	216.963.436	0	0
09/09/2013	1	0	40.558.930,51	4.570.000,00	0	0	0	0
09/10/2013	1	0	40.558.930,51	4.570.000,00	0	0	0	0
09/11/2013	1	45.128.935	40.558.930,51	4.570.000,00	40.558.931	7.462.843.214	4.570.000	840.880.000