



F.T.H. HIPOTEBANSA XI

SANTANDER DE TITULIZACION, S.G.F.T, S.A.

GRAN VIA DE HORTALEZA 3

28033 MADRID

santanderdetitulizacion@gruposantander.com



NAME OF THE FUND:

F.T.H. HIPOTEBANSA XI

INFORMATION AT:

QUARTER/SEMESTER: August 16, 2017 - November 15, 2017 YEAR: 2017

Acting on behalf of Santander de Titulización S.G.F.T., S.A. as General Manager:	Signature:
IGNACIO ORTEGA GAVARA - GENERAL MANAGER	

I. DATA OF THE FUND

Constitution Date	November 26, 2002	Paying Agent	BANCO SANTANDER	
Disbursement Date	November 29, 2002	Negotiation Market	AIAF	
Final Date of Redemption	February 15, 2035	Ratings Agencies	MOODY'S ESPAÑA	
			STANDARD & POORS	
Management Company	SANTANDER DE TITULIZACION, S.G.F.T, S.A.	Rating	Initial	Current
Credit Rights 's Seller	BANCO SANTANDER	CLASS A	Aaa/AAA	Aa3/AA+
		CLASS B	A2/A	Ba1/B-

II. SECURITIES ISSUED CHARGED TO THE FUND: SECURITISATION BONDS

CLASS PRIORITY ISIN CODE	NUM BONDS	NOMINAL			
			Initial	Current	%Act/In
CLASS A ES0338447008	10.408	Nominal per Bond	100.000,00	10.091,93	
		Total Nominal	1.040.800.000,00	105.036.807,44	10,09 %
CLASS B ES0338447016	212	Nominal per Bond	100.000,00	37.570,75	
		Total Nominal	21.200.000,00	7.964.999,00	37,57 %

REDEMPTION AND INTEREST OF THE BONDS					
Current			Next		
Payment Date of the Current Period November 15, 2017			Next Payment Date February 15, 2018		
	Redemption of the Bonds	Gross Interest	Interest Rate	Gross Interest Next Coupon	Net Interest Next Coupon
CLASS A	397,14 €	0,00 €	0,0000 %	0,00 €	0,00 €
CLASS B	0,00 €	11,49 €	0,1210 %	11,62 €	9,41 €
Accrued amortisation due not payed	0,00 €				
Scheduled Amortisation	NO				

III. ASSET PURCHASED BY THE FUND: CREDIT RIGHTS

CREDIT RIGHTS	ISSUE DATE	CURRENT DATE
Numbre of CR's	13.082	3.138
CR's Outstanding to be amortised	1.062.000.934,18	113.001.783,50
CR's Outstanding per Loan to be amortised	81.180,32	36.010,76
Interest Rate	4,46 %	0,77 %

PREPAYMENT RATE	CURRENT SITUATION
Monthly Single Rate	7,16 %
Average Monthly Single Rate	8,58 %
Constant Prepayment Rate from Constitution	8,50 %

CURRENT DELINQUENCY	Up to 1 month	From 1 to 6 months	Greater than 6 months
Debt Due (Principal + Interest)	9.037,98	22.883,17	0,00
Debt to be amortised	0,00	0,00	112.972.997,35
Total Debt	9.037,98	22.883,17	112.972.997,35

F.T.H. HIPOTEBANSA XI**QUARTERLY BONDS PAYOUT REPORT**

November 15, 2017

BONDS. PRINCIPAL	
Previous Balance	117.135.239,56 €
Principal Amortised	4.133.433,12 €
Outstanding Balance	113.001.806,44 €
% of Initial Balance	10,64%
Principal accrued and unpaid	0,00 €

INTEREST PAID	
CLASS A	0,00 €
CLASS B	2.435,88 €
Interest accrued and unpaid	0,00 €

DATA	
Pool Cut-off Date	07/11/2017
Payment Date	15/11/2017
Last Payment Date	16/08/2017
Number of Days (Act/360)	91
Reference Interest Rate (%)	-0,329%
Next Payment Date	15/02/2018

RESIDUAL LIFE (YEARS)		
	INITIAL	15/11/2017
CLASS A	6,7	0,71
CLASS B	12,8	0,75

F.T.H. HIPOTEBANSA XI

QUARTERLY COLLATERAL REPORT

November 15, 2017

PRINCIPAL	
Previous Balance	117.135.245,62 €
Principal Amortised	4.133.462,12 €
Outstanding Balance	113.001.783,50 €
Number of Credit Rights	3.138
LTV	31,16%

INTEREST	
Interest received during relevant period	219.278,70 €
Interest accrued during relevant period	225.794,64 €

PRINCIPAL BALANCE IN ARREARS					
	UP to 30 DAYS	30 to 60 DAYS	60 to 90 DAYS	90 to 180 DAYS	> 180 DAYS
Principal Balance in Arrears	8.444,00 €	4.760,52 €	5.350,46 €	10.231,17 €	0,00 €
Interest accrued on Credit Rights in Arrears	593,98 €	330,24 €	767,31 €	1.443,47 €	0,00 €
Outstanding Balance	1.587.998,56 €	397.297,96 €	351.447,68 €	299.867,66 €	1.123.133,33 €
Number of Credit Rights	37	8	9	8	23
% of Outstanding Balance	1,41%	0,35%	0,31%	0,27%	0,99%

F.T.H. HIPOTEBANSA XI**QUARTERLY COLLATERAL REPORT**

November 15, 2017

CONTENTIOUS / JUDICIAL	
Last balance	1.208.651,20 €
Difference in Actual Period	-25.150,74 €
Current balance	1.183.500,46 €
Contentious CR's number	25

TRANSITORY PROPERTIES	
Last balance	1.273.533,02 €
Difference in Actual Period	-42.628,94 €
Current balance	1.230.904,08 €
Transitory properties CR's number	18

NET LOSS	
Last balance	299.567,86 €
Difference in Actual Period	8.102,21 €
Current balance	307.670,07 €

F.T.H. HIPOTEBANSA XI

QUARTERLY REPORT - ALLOCATION OF CASH

November 15, 2017

TOTAL CASH RECEIVED END OF PERIOD	4.357.668,08 €
CASH RECEIVED - PRINCIPAL	
Amortisation of Credit Rights	4.048.711,64 €
CASH RECEIVED - INTEREST	
Interest received from Credit Rights	219.278,70 €
Interest received under GIC	-10.066,88 €
CONTENTIOUS	80.022,97 €
INCOMES/EXPENSES OF TRANSITORY PROPERTIES	20.226,65 €
RESERVE FUNDS	0,00 €
OTHERS	-505,00 €

TREASURY ACCOUNT STATEMENT	4.369.709,79 €
PRINCIPAL RESERVE FUND	
Previous Balance	1.371.767,83 €
Variation	0,00 €
Outstanding Balance	1.371.767,83 €
PRINCIPAL RESERVE FUND	
Previous Balance	2.997.941,96 €
Variation	0,00 €
Outstanding Balance	2.997.941,96 €
WITHHOLDING TAXES	0,00 €
ISSUE EXPENSES WITHHELD	0,00 €
OTHERS	0,00 €

TOTAL CASH PAID END OF PERIOD	4.357.668,08 €
ORDINARY EXPENSES	181,50 €
MANAGEMENT FEE	19.680,00 €
SWAP A COLLECTION	0,00 €
SWAP A PAYMENT	48.060,31 €
SWAP B COLLECTION	-2.436,18 €
SWAP B PAYMENT	3.506,45 €
CLASS A INTEREST	0,00 €
CLASS A REDEMPTION	4.133.433,12 €
CLASS B REDEMPTION	0,00 €
CLASS B INTEREST	2.435,88 €
SUBORDINATED LOAN A INTEREST	1.929,12 €
SUBORDINATED LOAN B INTEREST	0,00 €
SUBORDINATED LOAN A REDEMPTION	0,00 €
SUBORDINATED LOAN B REDEMPTION	0,00 €
ADMINISTRATION FEE	6.000,00 €
VARIABLE FEE	144.877,88 €

F.T.H. HIPOTEBANSA XI

CREDIT ENHANCEMENT AND SUBORDINATED LOAN

November 15, 2017

CREDIT ENHANCEMENT		
CONCEPTS	INITIAL	November 15, 2017
SUBORDINATED ISSUE	2,00 %	7,05%
PRINCIPAL RESERVE FUND	10.620.000,00 € (1,00 %)	1.371.767,83 € 1,21%
SECONDARY RESERVE FUND	5.310.000,00 € (0,50 %)	2.997.941,96 € 2,65%

SUBORDINATED LOANS		
CONCEPTS	INITIAL	November 15, 2017
SUBORDINATED LOAN A		
Total Outstanding Subordinated Loan	17.045.178,00 €	4.371.561,25 €
Interest Rate	3,860 %	0,173%

F.T.H. HIPOTEBANSA XI

TRIGGERS OF THE MODEL

November 15, 2017

RESERVE FUND's TRIGGERS	
IF 1) IS HIGHER THAN 2) RESERVE FUNDS WILL NOT BE REDUCED	
1) 99% PREVIOUS BTA BALANCE	115.963.887,16 €
2) CREDIT RIGHTS OUTSTANDING BALANCE (ARREARS < 90 DAYS) + CR'S REDEMPTION	115.627.494,15 €

RESERVE FUND HAS NOT BEEN REDUCED

BOND's TRIGGERS	
IF 1) IS HIGHER THAN 2) CLASS B IS NOT AMORTISED	
1) CREDIT RIGHTS IN ARREARS OVER 90 DAYS	1.423.000,99 €
2) 4% CREDIT RIGHTS OUTSTANDING BALANCE	4.520.071,34 €

CLASS B HAS REACHED ITS MINIMUM LEVEL

AGREEMENT	COUNTERPARTY	RATING AGENCY	MINIMUM RATING REQUIRED	CURRENT RATING
TREASURY ACCOUNT	BANCO SANTANDER	MOODYS S&P	P-1 s/t A-1 s/t A l/t	A3 l/t P-2 s/t A- l/t A-2 s/t
SWAP	BANCO SANTANDER	MOODYS S&P	A2 s/t P-1 l/t A l/t	A3 l/t P-2 s/t A- l/t A-2 s/t

COUNTERPARTY DOES NOT HAVE THE MINIMUM, RATING REQUIRED. TREASURY ACCOUNT HAS BEEN TRANSFERRED TO A COUNTERPARTY WITH MINIMUM RATING REQUIRED. SWAP DEPOSIT HAS BEEN DEPOSITED IN TREASURY ACCOUNT

F.T.H. HIPOTEBANSA XI

DEFINITIONS

November 15, 2017

POOL CUT-OFF DATE Means the date in which the Gestora will carry out the necessary calculations, on behalf of the Fund, for the distribution of the available funds at this date, according with the Order of Priority of Payments.

All the information regarding the Assets (Outstanding Balance of the Credit Rights, arrears' tables, transitory properties, stratification tables, etc.) are referred to this mentioned date.

NET LOSSES Those loans which the Originator considers that will not recover (net of recoveries).

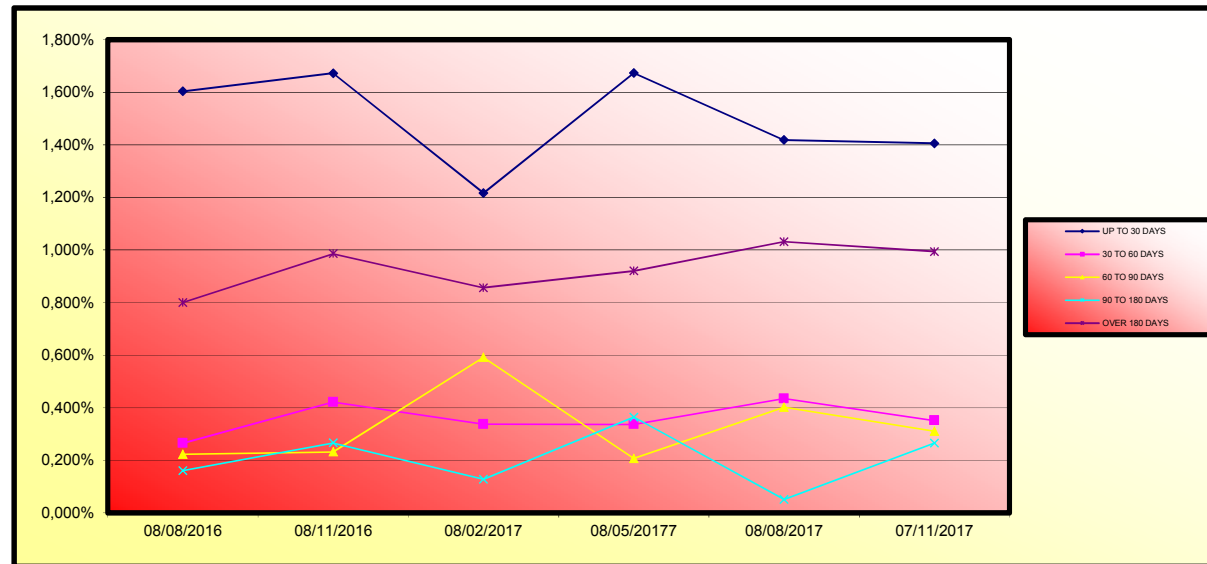
TRANSITORY PROPERTIES Those assets in the balance of the Fund as a consequence of a judicial or non-judicial process.

CONTENTIOUS / JUDICIAL Loans in which the Originator will take legal actions. This amount is included in the different buckets in arrears.

**FONDO DE TITULIZACION DE ACTIVOS
HIPOTEBANSA 11**

Report date: November 15th 2017

ARREARS PERFORMANCE						
	08/08/2016	08/11/2016	08/02/2017	08/05/20177	08/08/2017	07/11/2017
UP TO 30 DAYS	1,604%	1,673%	1,216%	1,673%	1,418%	1,405%
30 TO 60 DAYS	0,265%	0,421%	0,337%	0,337%	0,435%	0,352%
60 TO 90 DAYS	0,223%	0,232%	0,591%	0,207%	0,402%	0,311%
90 TO 180 DAYS	0,160%	0,266%	0,128%	0,365%	0,051%	0,265%
OVER 180 DAYS	0,800%	0,986%	0,857%	0,920%	1,032%	0,994%



**FONDO DE TITULIZACION DE ACTIVOS
HIPOTEBANSA 11**

LOAN TO VALUE

Report date: November 15th 2017

LTV				
	OUTS, BALANCE	% OUTSTANDING	NUMBER LOANS	% NUM LOANS
0-9,99	3.091.385,63 €	2,74%	353	11,25%
10-19,99	12.558.006,71 €	11,11%	558	17,78%
20-29,99	21.735.611,49 €	19,23%	714	22,75%
30-39,99	22.051.809,04 €	19,51%	539	17,18%
40-49,99	25.924.952,04 €	22,94%	503	16,03%
50-59,99	17.705.696,14 €	15,67%	305	9,72%
60-69,99	7.088.626,11 €	6,27%	120	3,82%
70-79,99	2.161.464,43 €	1,91%	34	1,08%
80-89,99	684.231,91 €	0,61%	12	0,38%

PREPAGOS - HIPOTEBANSA 11

15-nov-17

Fecha	Balance Teórico	Balance Real	0,74% Vector Prepago	Tasa Prepago Mensual desde Inicio	Tasa Prepago Anualizada desde Inicio	Tasa Prepago Mensual	Tasa Prepago Mensual Anualizada	Outstanding after prepayment	Principal Available	
					8,58%				1.062.000.934,18	
1	1.062.000.934,18		100,00%	100,00%				1.062.000.934,18		
2	1-dic.-02	1.059.170.325,97	1.057.044.700,19	99,26%	99,80%	0,20%	2,38%	0,20%	2,38%	1.057.044.700,2
3	1-ene.-03	1.056.330.372,16	1.048.809.339,04	98,53%	99,29%	0,36%	4,20%	0,51%	5,98%	1.048.809.339,0
4	1-feb.-03	1.053.479.859,47	1.037.938.978,94	97,80%	98,52%	0,49%	5,77%	0,77%	8,84%	1.037.938.978,9
5	1-mar.-03	1.050.618.748,66	1.030.003.541,32	97,08%	98,04%	0,49%	5,77%	0,49%	5,77%	1.030.003.541,3
6	1-abr.-03	1.047.747.000,34	1.020.972.745,34	96,37%	97,44%	0,52%	6,02%	0,61%	7,02%	1.020.972.745,3
7	1-may.-03	1.044.864.574,97	1.010.816.263,76	95,66%	96,74%	0,55%	6,41%	0,72%	8,32%	1.010.816.263,8
8	1-jun.-03	1.041.971.432,87	1.003.440.878,07	94,95%	96,30%	0,54%	6,26%	0,45%	5,31%	1.003.440.878,1
9	1-jul.-03	1.039.067.682,10	993.186.004,40	94,25%	95,58%	0,56%	6,55%	0,75%	8,59%	993.186.004,4
10	1-ago.-03	1.036.153.135,33	982.097.638,62	93,56%	94,78%	0,59%	6,89%	0,84%	9,61%	982.097.638,6
11	1-sep.-03	1.033.227.752,45	975.159.555,45	92,87%	94,38%	0,58%	6,71%	0,43%	4,99%	975.159.555,5
12	1-oct.-03	1.030.291.493,18	966.431.750,97	92,18%	93,80%	0,58%	6,74%	0,61%	7,11%	966.431.751,0
13	1-nov.-03	1.027.344.317,10	953.436.130,22	91,50%	92,81%	0,62%	7,19%	1,06%	12,02%	953.436.130,2
14	1-dic.-03	1.024.386.183,63	944.508.540,63	90,83%	92,20%	0,62%	7,22%	0,65%	7,53%	944.508.540,6
15	1-ene.-04	1.021.417.800,39	930.185.073,01	90,16%	91,07%	0,67%	7,71%	1,23%	13,80%	930.185.073,0
16	1-feb.-04	1.018.438.380,94	921.831.922,03	89,50%	90,51%	0,66%	7,66%	0,61%	7,06%	921.831.922,0
17	1-mar.-04	1.015.447.884,27	907.539.469,11	88,84%	89,37%	0,70%	8,08%	1,26%	14,12%	907.539.469,1
18	1-abr.-04	1.012.446.269,20	895.504.918,67	88,18%	88,45%	0,72%	8,30%	1,03%	11,72%	895.504.918,7
19	1-may.-04	1.009.433.494,41	887.418.518,82	87,53%	87,91%	0,71%	8,23%	0,61%	7,05%	887.418.518,8
20	1-jun.-04	1.006.409.518,43	876.263.237,75	86,89%	87,07%	0,73%	8,37%	0,96%	10,93%	876.263.237,8
21	1-jul.-04	1.003.377.044,29	867.495.065,22	86,25%	86,07%	0,72%	8,36%	0,70%	8,10%	867.495.065,2
22	1-ago.-04	1.000.333.295,73	857.633.882,55	85,61%	85,73%	0,73%	8,42%	0,84%	9,58%	857.633.882,6
23	1-sep.-04	997.278.230,87	804.308.410,78	84,98%	80,65%	0,97%	11,07%	5,93%	51,98%	804.308.410,8
24	1-oct.-04	994.211.807,63	795.545.591,13	84,35%	80,02%	0,96%	10,98%	0,78%	9,02%	795.545.591,1
25	1-nov.-04	991.133.983,79	782.598.464,39	83,73%	78,96%	0,98%	11,14%	1,32%	14,76%	782.598.464,4
26	1-dic.-04	988.044.717,00	770.977.781,30	83,11%	78,03%	0,99%	11,23%	1,18%	13,24%	770.977.781,3
27	1-ene.-05	984.948.536,41	754.651.271,17	82,50%	76,62%	1,02%	11,57%	1,81%	19,68%	754.651.271,2
28	1-feb.-05	981.840.844,62	742.323.934,82	81,89%	75,61%	1,03%	11,69%	1,32%	14,76%	742.323.934,8
29	1-mar.-05	978.721.598,87	731.960.780,33	81,29%	74,79%	1,03%	11,71%	1,08%	12,24%	731.960.780,3
30	1-abr.-05	975.590.756,20	718.984.542,85	80,69%	73,70%	1,05%	11,86%	1,46%	16,15%	718.984.542,9
31	1-may.-05	972.448.273,51	706.885.021,02	80,10%	72,69%	1,06%	11,98%	1,37%	15,21%	706.885.021,0
32	1-jun.-05	969.294.107,55	689.240.977,47	79,50%	71,11%	1,09%	12,37%	2,18%	23,23%	689.240.977,5
33	1-jul.-05	966.131.551,58	678.185.756,46	78,92%	70,20%	1,10%	12,43%	1,28%	14,34%	678.185.756,5
34	1-ago.-05	962.957.237,72	666.214.919,67	78,34%	69,18%	1,11%	12,54%	1,44%	15,99%	666.214.919,7
35	1-sep.-05	959.771.122,28	658.165.638,87	77,76%	68,58%	1,10%	12,47%	0,88%	10,07%	658.165.638,9
36	1-oct.-05	956.573.161,40	648.651.369,26	77,19%	67,81%	1,10%	12,47%	1,12%	12,60%	648.651.369,3
37	1-nov.-05	953.363.311,04	638.242.081,65	76,62%	66,95%	1,11%	12,52%	1,27%	14,26%	638.242.081,7
38	1-dic.-05	950.141.527,02	627.954.600,79	76,05%	66,09%	1,11%	12,57%	1,28%	14,31%	627.954.600,8
39	1-ene.-06	946.909.556,71	616.446.413,36	75,49%	65,10%	1,12%	12,68%	1,50%	16,56%	616.446.413,4
40	1-feb.-06	943.665.570,52	605.695.422,90	74,94%	64,19%	1,13%	12,75%	1,41%	15,63%	605.695.422,9
41	1-mar.-06	940.409.523,79	594.529.487,85	74,38%	63,22%	1,14%	12,85%	1,50%	16,62%	594.529.487,9
42	1-abr.-06	937.141.371,71	584.960.675,74	73,84%	62,42%	1,14%	12,88%	1,27%	14,18%	584.960.675,7
43	1-may.-06	933.861.069,29	575.086.536,35	73,29%	61,58%	1,15%	12,94%	1,34%	14,97%	575.086.536,4
44	1-jun.-06	930.568.571,35	565.932.803,00	72,75%	60,82%	1,15%	12,96%	1,24%	13,94%	565.932.803,0
45	1-jul.-06	927.272.799,87	558.118.316,87	72,21%	60,19%	1,15%	12,93%	1,03%	11,69%	558.118.316,9
46	1-ago.-06	923.964.775,39	550.497.713,95	71,68%	59,58%	1,14%	12,90%	1,01%	11,49%	550.497.714,0
47	1-sep.-06	920.644.452,37	542.920.794,56	71,15%	58,97%	1,14%	12,87%	1,02%	11,58%	542.920.794,6
48	1-oct.-06	917.311.785,10	536.549.647,93	70,63%	58,49%	1,13%	12,80%	0,81%	9,35%	536.549.647,9
49	1-nov.-06	913.966.727,70	529.463.736,52	70,11%	57,93%	1,13%	12,76%	0,96%	10,93%	529.463.736,5
50	1-dic.-06	910.609.234,12	520.643.753,84	69,59%	57,18%	1,13%	12,80%	1,30%	14,57%	520.643.753,8
51	1-ene.-07	907.242.586,08	512.492.911,52	69,08%	56,49%	1,14%	12,81%	1,20%	13,49%	512.492.911,5
52	1-feb.-07	903.863.421,61	505.142.636,37	68,57%	55,89%	1,13%	12,79%	1,07%	12,07%	505.142.636,4
53	1-mar.-07	900.471.694,20	498.780.135,48	68,06%	55,39%	1,13%	12,74%	0,89%	10,15%	498.780.135,5
54	1-abr.-07	897.067.357,15	490.788.190,07	67,56%	54,71%	1,13%	12,76%	1,23%	13,79%	490.788.190,1
55	1-may.-07	893.650.363,60	485.583.354,72	67,06%	54,34%	1,12%	12,68%	0,68%	7,89%	485.583.354,7
56	1-jun.-07	890.220.666,50	479.137.057,63	66,57%	53,82%	1,12%	12,64%	0,95%	10,79%	479.137.057,6
57	1-jul.-07	886.836.366,45	471.982.288,71	66,08%	53,22%	1,12%	12,64%	1,12%	12,61%	471.982.288,7
58	1-ago.-07	883.439.484,37	465.857.195,81	65,59%	52,73%	1,12%	12,60%	0,92%	10,48%	465.857.195,8
59	1-sep.-07	880.029.973,50	461.998.838,58	65,11%	52,50%	1,10%	12,48%	0,44%	5,20%	461.998.838,6
60	1-oct.-07	876.607.786,89	458.046.611,10	64,63%	52,25%	1,09%	12,37%	0,47%	5,48%	458.046.611,1
61	1-nov.-07	873.172.877,43	452.371.234,64	64,15%	51,81%	1,09%	12,32%	0,85%	9,74%	452.371.234,6
62	1-dic.-07	869.725.197,85	448.356.935,35	63,68%	51,55%	1,08%	12,22%	0,49%	5,78%	448.356.935,4
63	1-ene.-08	866.268.177,14	439.408.095,80	63,21%	50,72%	1,09%	12,31%	1,60%	17,65%	439.408.095,8
64	1-feb.-08	862.798.304,13	432.865.132,35	62,74%	50,17%	1,09%	12,31%	1,09%	12,35%	432.865.132,4
65	1-mar.-08	859.315.531,03	428.713.233,91	62,28%	49,89%	1,08%	12,22%	0,56%	6,49%	428.713.233,9
66	1-abr.-08	855.819.809,91	423.809.725,84	61,82%	49,52%	1,08%	12,17%	0,74%	8,53%	423.809.725,8
67	1-may.-08	852.311.092,64	417.767.295,59	61,37%	49,02%	1,07%	12,16%	1,02%	11,58%	417.767.295,6
68	1-jun.-08	848.789.330,93	414.119.779,42	60,91%	48,79%	1,07%	12,06%	0,46%	5,40%	414.119.779,4
69	1-jul.-08	845.278.456,53	408.387.262,86	60,47%	48,31%	1,06%	12,05%	0,97%	11,09%	408.387.262,9
70	1-ago.-08	841.754.529,66	399.894.858,15	60,02%	47,51%	1,07%	12,14%	1,67%	18,29%	399.894.858,2
71	1-sep.-08	838.217.501,81	397.104.484,05	59,58%	47,37%	1,06%	12,02%	0,28%	3,29%	397.104.484,1
72	1-oct.-08	834.667.324,30	392.635.300,03	59,14%	47,04%	1,06%	11,97%	0,70%	8,14%	392.635.300,0
73	1-nov.-08	831.103.948,24	388.690.866,11	58,70%	46,77%	1,05%	11,90%	0,58%	6,74%	388.690.866,1
74	1-dic.-08	827.527.324,58	385.413.737,73	58,27%	46,57%	1,04%	11,80%	0,41%	4,86%	385.413.737,7
75	1-ene.-09	823.941.709,31	379.887.693,57	57,84%	46,11%	1,04%	11,80%	1,00%	11,41%	379.887.693,6
76	1-feb.-09	820.342.763,79	376.132.280,53	57,41%	45,85%	1,03%	11,73%	0,55%	6,45%	376.132.280,5
77	1-mar.-09	816.730.438,47	373.184.766,62	56,99%	45,69%	1,03%	11,63%	0,34%	4,06%	373.184.766,6
78	1-abr.-09	813.104.683,62	370.712.910,40	56,57%	45,59%	1,01%	11,52%	0,22%	2,60%	370.712.910,4
79	1-may.-09	809.465.449,34	366.289.849,16	56,15%	45,25%	1,01%	11,48%	0,75%	8,63%	366.289.849,2
80	1-jun.-09	805.812.685,52	362.559.930,03	55,74%	44,99%	1,01%	11,42%	0,57%	6,63%	362.559.930,0
81	1-jul.-09	802.186.527,76	357.724.978,07	55,33%	44,59%	1				

87	1-ene.-10	780.152.853,81	331.682.915,73	52,93%	42,52%	0,99%	11,25%	1,19%	13,39%	331.682.915,7	
88	1-feb.-10	776.439.433,47	328.381.940,19	52,54%	42,29%	0,98%	11,19%	0,52%	6,08%	328.381.940,2	12.584.982,31
89	1-mar.-10	772.712.207,86	324.299.710,78	52,15%	41,97%	0,98%	11,17%	0,77%	8,82%	324.299.710,8	
90	1-abr.-10	768,971.125,68	320.856.666,58	51,76%	41,73%	0,98%	11,12%	0,58%	6,75%	320.856.666,6	
91	1-may.-10	765.216.135,42	317.821.724,68	51,38%	41,53%	0,97%	11,06%	0,46%	5,38%	317.821.724,7	10.560.215,51
92	1-jun.-10	761.447.185,41	315.309.819,68	51,00%	41,41%	0,96%	10,98%	0,30%	3,53%	315.309.819,7	
93	1-jul.-10	757.737.575,21	312.506.764,97	50,63%	41,24%	0,96%	10,91%	0,40%	4,74%	312.506.765,0	
94	1-ago.-10	754.014.173,91	307.861.260,43	50,26%	40,83%	0,96%	10,92%	1,00%	11,36%	307.861.260,4	9.960.464,25
95	1-sep.-10	750.276.930,25	305.310.872,01	49,89%	40,69%	0,95%	10,84%	0,33%	3,94%	305.310.872,0	
96	1-oct.-10	746.525.792,79	302.266.230,38	49,52%	40,49%	0,95%	10,79%	0,50%	5,83%	302.266.230,4	
97	1-nov.-10	742.760.709,88	299.713.677,26	49,15%	40,35%	0,94%	10,72%	0,34%	4,03%	299.713.677,3	8.147.583,17
98	1-dic.-10	738.981.629,70	296.591.158,42	48,79%	40,14%	0,94%	10,68%	0,54%	6,24%	296.591.158,4	
99	1-ene.-11	735.193.927,19	291.262.819,72	48,43%	39,62%	0,94%	10,72%	1,29%	14,43%	291.262.819,7	
100	1-feb.-11	731.392.143,34	288.900.230,44	48,07%	39,50%	0,93%	10,65%	0,30%	3,49%	288.900.230,4	10.813.446,82
101	1-mar.-11	727.576.225,80	286.264.570,10	47,72%	39,34%	0,93%	10,59%	0,39%	4,61%	286.264.570,1	
102	1-abr.-11	723.746.122,06	283.436.064,18	47,37%	39,16%	0,92%	10,54%	0,46%	5,43%	283.436.064,2	
103	1-may.-11	719.901.779,38	280.960.059,59	47,02%	39,03%	0,92%	10,48%	0,34%	4,05%	280.960.059,6	7.940.170,85
104	1-jun.-11	716.043.144,85	278.312.314,21	46,67%	38,87%	0,91%	10,43%	0,41%	4,79%	278.312.314,2	
105	1-jul.-11	712.190.655,82	275.761.660,14	46,33%	38,72%	0,91%	10,37%	0,38%	4,47%	275.761.660,1	
106	1-ago.-11	708.323.844,65	273.279.092,90	45,99%	38,58%	0,90%	10,31%	0,36%	4,23%	273.279.092,9	7.680.966,69
107	1-sep.-11	704.442.658,13	270.935.369,97	45,65%	38,46%	0,90%	10,25%	0,31%	3,67%	270.935.370,0	
108	1-oct.-11	700.547.042,80	268.556.921,92	45,31%	38,34%	0,89%	10,19%	0,33%	3,85%	268.556.921,9	
109	1-nov.-11	696.636.945,06	266.425.568,69	44,98%	38,24%	0,89%	10,13%	0,24%	2,80%	266.425.568,7	6.853.524,21
110	1-dic.-11	692.712.311,08	263.629.031,32	44,65%	38,06%	0,88%	10,09%	0,49%	5,71%	263.629.031,3	
111	1-ene.-12	688.784.629,71	259.676.451,07	44,32%	37,70%	0,88%	10,10%	0,94%	10,69%	259.676.451,1	
112	1-feb.-12	684.842.346,75	256.892.369,56	43,99%	37,51%	0,88%	10,06%	0,50%	5,87%	256.892.369,6	9.533.199,13
113	1-mar.-12	680.885.407,92	253.949.065,00	43,67%	37,30%	0,88%	10,03%	0,57%	6,64%	253.949.065,0	
114	1-abr.-12	676.913.758,75	251.104.281,26	43,34%	37,10%	0,87%	10,00%	0,54%	6,29%	251.104.281,3	
115	1-may.-12	672.927.344,57	247.859.348,30	43,02%	36,83%	0,87%	9,98%	0,71%	8,17%	247.859.348,3	9.033.021,26
116	1-jun.-12	668.926.110,50	244.993.940,46	42,71%	36,62%	0,87%	9,95%	0,56%	6,57%	244.993.940,5	
117	1-jul.-12	665.347.651,79	242.336.402,87	42,39%	36,42%	0,87%	9,92%	0,55%	6,43%	242.336.402,9	
118	1-ago.-12	661.755.889,43	239.852.008,79	42,08%	36,24%	0,86%	9,89%	0,49%	5,70%	239.852.008,8	8.007.339,51
119	1-sep.-12	658.150.773,97	237.561.527,78	41,77%	36,10%	0,86%	9,84%	0,41%	4,84%	237.561.527,8	
120	1-oct.-12	654.532.255,78	235.276.281,90	41,46%	35,95%	0,86%	9,80%	0,41%	4,86%	235.276.281,9	
121	1-nov.-12	650.900.285,05	232.665.500,60	41,16%	35,75%	0,85%	9,78%	0,56%	6,49%	232.665.500,6	7.186.508,19
122	1-dic.-12	647.254.811,77	229.563.429,83	40,85%	35,47%	0,85%	9,77%	0,78%	8,94%	229.563.429,8	
123	1-ene.-13	643.606.678,16	226.412.789,50	40,55%	35,18%	0,85%	9,77%	0,81%	9,34%	226.412.789,5	8.517.496,57
124	1-feb.-13	639.944.981,93	224.148.004,03	40,25%	35,03%	0,85%	9,73%	0,43%	5,08%	224.148.004,0	
125	1-mar.-13	636.269.672,68	221.948.739,67	39,96%	34,88%	0,85%	9,69%	0,41%	4,80%	221.948.739,7	
126	1-abr.-13	632.580.699,82	219.391.546,83	39,66%	34,68%	0,84%	9,67%	0,58%	6,69%	219.391.546,8	6.973.863,92
127	1-may.-13	628.878.012,55	217.174.140,11	39,37%	34,53%	0,84%	9,63%	0,43%	5,02%	217.174.140,1	
128	1-jun.-13	625.161.559,92	215.049.584,48	39,08%	34,40%	0,84%	9,59%	0,39%	4,58%	215.049.584,5	
129	1-jul.-13	621.456.630,52	212.809.646,44	38,79%	34,24%	0,83%	9,56%	0,45%	5,29%	212.809.646,4	6.515.003,52
130	1-ago.-13	617.737.927,43	210.659.136,59	38,50%	34,10%	0,83%	9,52%	0,41%	4,86%	210.659.136,6	
131	1-sep.-13	614.005.399,43	208.912.559,65	38,22%	34,02%	0,83%	9,47%	0,23%	2,68%	208.912.559,7	
132	1-oct.-13	610.258.995,15	206.556.591,52	37,94%	33,85%	0,82%	9,45%	0,52%	6,07%	206.556.591,5	
133	1-nov.-13	606.498.663,03	204.578.485,37	37,66%	33,73%	0,82%	9,41%	0,34%	4,05%	204.578.485,4	6.080.651,22
134	1-dic.-13	602.724.351,28	202.437.830,58	37,38%	33,59%	0,82%	9,37%	0,43%	5,00%	202.437.830,6	
135	1-ene.-14	598.945.359,53	199.455.990,35	37,11%	33,30%	0,82%	9,38%	0,85%	9,75%	199.455.990,4	
136	1-feb.-14	595.152.318,81	197.425.214,43	36,83%	33,17%	0,81%	9,34%	0,39%	4,55%	197.425.214,4	7.153.270,94
137	1-mar.-14	591.345.176,91	194.082.513,37	36,56%	32,82%	0,82%	9,36%	1,06%	12,01%	194.082.513,4	
138	1-abr.-14	587.523.881,41	191.766.394,14	36,29%	32,64%	0,81%	9,34%	0,55%	6,41%	191.766.394,1	7.469.918,55
139	1-may.-14	583.688.379,71	189.955.295,88	36,02%	32,54%	0,81%	9,30%	0,29%	3,47%	189.955.295,9	
140	1-jun.-14	579.838.619,01	187.970.954,96	35,76%	32,42%	0,81%	9,27%	0,39%	4,55%	187.970.955,0	
141	1-jul.-14	576.249.599,09	184.376.022,73	35,50%	32,00%	0,81%	9,31%	1,30%	14,55%	184.376.022,7	
142	1-ago.-14	572.647.236,25	183.915.580,70	35,23%	32,12%	0,80%	9,21%	-0,38%	-4,63%	183.915.580,7	6.039.715,18
143	1-sep.-14	569.031.480,92	182.088.534,10	34,97%	32,00%	0,80%	9,18%	0,36%	4,29%	182.088.534,1	
144	1-oct.-14	565.402.283,32	179.967.990,52	34,72%	31,83%	0,80%	9,16%	0,53%	6,18%	179.967.990,5	
145	1-nov.-14	561.759.593,48	178.166.408,27	34,46%	31,72%	0,79%	9,13%	0,36%	4,23%	178.166.408,3	5.749.172,43
146	1-dic.-14	558.103.361,25	176.557.932,40	34,21%	31,64%	0,79%	9,09%	0,25%	3,00%	176.557.932,4	
147	1-ene.-15	554.443.005,38	173.697.923,48	33,95%	31,33%	0,79%	9,10%	0,97%	11,04%	173.697.923,5	6.377.229,41
148	1-feb.-15	550.769.041,47	171.789.178,86	33,70%	31,19%	0,79%	9,07%	0,44%	5,14%	171.789.178,9	
149	1-mar.-15	547.081.418,95	169.802.765,32	33,46%	31,04%	0,79%	9,05%	0,49%	5,72%	169.802.765,3	
150	1-abr.-15	543.380.087,04	166.653.950,29	33,21%	30,67%	0,79%	9,08%	1,19%	13,34%	166.653.950,3	5.853.288,37
151	1-may.-15	539.664.994,80	165.935.890,49	32,96%	30,75%	0,78%	9,00%	-0,25%	-3,10%	165.935.890,5	
152	1-jun.-15	535.936.091,09	164.426.688,35	32,72%	30,68%	0,78%	8,96%	0,22%	2,61%	164.426.688,4	
153	1-jul.-15	532.220.881,90	162.349.402,67	32,48%	30,50%	0,78%	8,95%	0,57%	6,68%	162.349.402,7	5.475.052,69
154	1-ago.-15	528.491.860,80	160.460.837,80	32,24%	30,36%	0,78%	8,93%	0,47%	5,45%	160.460.837,8	
155	1-sep.-15	524.748.976,46	158.901.916,90	32,00%	30,28%	0,77%	8,89%	0,27%	3,14%	158.901.916,9	
156	1-oct.-15	520.992.177,34	157.141.696,30	31,77%	30,16%	0,77%	8,86%	0,39%	4,63%	157.141.696,3	
157	1-nov.-15	517.221.411,74	155.577.319,97	31,53%	30,08%	0,77%	8,83%	0,27%	3,24%	155.577.320,0	4.883.517,83
158	1-dic.-15	513.436.627,75	153.657.092,53	31,30%	29,93%	0,77%	8,81%	0,51%	5,91%	153.657.092,5	
159	1-ene.-16	509.646.529,91	151.177.382,56	31,07%	29,66%	0,77%	8,82%	0,88%	10,09%	151.177.382,6	
160	1-feb.-16	505.842.341,83	149.234.013,87	30,84%	29,50%	0,76%	8,80%	0,54%	6,33%	149.234.013,9	6.343.306,10
161	1-mar.-16	502.024.011,13	147.321.328,49	30,61%	29,35%	0,76%	8,79%	0,53%	6,19%	147.321.328,5	
162	1-abr.-16	498.191.485,25	145.360.399,57	30,39%	29,18%	0,76%	8,77%	0,57%	6,65%	145.360.399,6	
163	1-may.-16	494.344.711,43	143.167.798,91	30,16%	28,96%	0,76%	8,77%	0,74%	8,55%	143.167.798,9	6.066.214,96
164	1-jun.-16	490.483.636,72	140.443.812,33	29,94%	28,63%	0,76%	8,80%	1,13%	12,75%	140.443.812,3	
165	1-jul.-16	486.632.790,92	138.838.136,89	29,72%	28,53%	0,76%	8,77%	0,36%	4,25%	138.838.136,9	
166	1-ago.-16	482.767.629,10	137.176.783,32	29,50%	28,41%	0,76%	8,74%	0,41%	4,76%	137.176.783,3	5.991.015,59
167	1-sep.-16	478.888.098,04	135.570.919,86	29,28%	28,31%	0,76%	8,72%	0,37%	4,35%	135.570.919,9	
168	1-oct.-16	474.994.144,35	133.961.577,59	29,07%	28,20%	0,76%	8,69%	0,38%	4,43%	133.961.577,6	
169	1-nov.-16	471.085.714,40	132.388.706,43	28,85%	28,10%	0,75%	8,67%	0,35%	4,17%	132.388.706,4	4.788.076,89
170	1-dic.-16	467.162.754,41	130.497.732,38	28,64%	27,93%	0,75%	8,66%	0,60%	6,97%	130.497.732,4	
171	1-ene.-17	463.236.653,71	128.443.297,76	28,43%	27,73%	0,75%	8,66%	0,74%	8,53%	128.443.297,8	
172	1-feb.-17	459.295.957,29	126.597.067,15								

1.062.000.000,000

6,00%

0,75%

69285,54

VIDA RESIDUAL DESDE

15-nov.-17

0,71

0,75

FECHA	Principal disponible para la amortización	SERIE A		SERIE B		SERIE A		SERIE B	
		PRINCIPAL	VIDA MEDIA	PRINCIPAL	VIDA MEDIA	PRINCIPAL	VIDA MEDIA	PRINCIPAL	VIDA MEDIA
15-dic.-02	0,00	1.040.800.000,00	21.200.000,00						
15-ene.-03	1	0,00	1.040.800.000,00	21.200.000,00	0,00	0,00	0,00	0,00	0,00
15-feb.-03	1	24.061.955,24	1.040.800.000,00	21.200.000,00	24.061.955,24	-129.621.752.877,88	0,00	0,00	0,00
15-mar.-03	1	0,00	1.016.738.044,76	21.200.000,00	0,00	0,00	0,00	0,00	0,00
15-abr.-03	1	0,00	1.016.738.044,76	21.200.000,00	0,00	0,00	0,00	0,00	0,00
15-may.-03	1	27.122.715,18	1.016.738.044,76	21.200.000,00	27.122.715,18	-143.696.145.023,64	0,00	0,00	0,00
15-jun.-03	1	0,00	989.615.329,58	21.200.000,00	0,00	0,00	0,00	0,00	0,00
15-jul.-03	1	0,00	989.615.329,58	21.200.000,00	0,00	0,00	0,00	0,00	0,00
15-ago.-03	1	28.718.625,14	989.615.329,58	21.200.000,00	28.718.625,14	-149.509.162.478,84	0,00	0,00	0,00
15-sep.-03	1	0,00	960.896.704,44	21.200.000,00	0,00	0,00	0,00	0,00	0,00
15-oct.-03	1	0,00	960.896.704,44	21.200.000,00	0,00	0,00	0,00	0,00	0,00
15-nov.-03	1	28.661.508,40	960.896.704,44	21.200.000,00	28.661.508,40	-146.574.953.957,60	0,00	0,00	0,00
15-dic.-03	1	0,00	932.235.196,04	21.200.000,00	0,00	0,00	0,00	0,00	0,00
15-ene.-04	1	0,00	932.235.196,04	21.200.000,00	0,00	0,00	0,00	0,00	0,00
15-feb.-04	1	31.604.208,19	932.235.196,04	21.200.000,00	31.604.208,19	-158.716.333.530,18	0,00	0,00	0,00
15-mar.-04	1	0,00	900.630.987,85	21.200.000,00	0,00	0,00	0,00	0,00	0,00
15-abr.-04	1	0,00	900.630.987,85	21.200.000,00	0,00	0,00	0,00	0,00	0,00
15-may.-04	1	34.413.403,21	900.630.987,85	21.200.000,00	34.413.403,21	-169.726.904.631,72	0,00	0,00	0,00
15-jun.-04	1	0,00	866.217.584,64	21.200.000,00	0,00	0,00	0,00	0,00	0,00
15-jul.-04	1	0,00	866.217.584,64	21.200.000,00	0,00	0,00	0,00	0,00	0,00
15-ago.-04	1	29.784.636,27	866.217.584,64	21.200.000,00	29.784.636,27	-144.157.639.546,80	0,00	0,00	0,00
15-sep.-04	1	0,00	836.432.948,37	21.200.000,00	0,00	0,00	0,00	0,00	0,00
15-oct.-04	1	0,00	836.432.948,37	21.200.000,00	0,00	0,00	0,00	0,00	0,00
15-nov.-04	1	75.035.418,16	836.432.948,37	21.200.000,00	75.035.418,16	-356.268.165.423,68	0,00	0,00	0,00
15-dic.-04	1	0,00	761.397.530,21	21.200.000,00	0,00	0,00	0,00	0,00	0,00
15-ene.-05	1	0,00	761.397.530,21	21.200.000,00	0,00	0,00	0,00	0,00	0,00
15-feb.-05	1	40.274.529,57	761.397.530,21	21.200.000,00	40.274.529,57	-187.518.209.677,92	0,00	0,00	0,00
15-mar.-05	1	0,00	721.123.000,64	21.200.000,00	0,00	0,00	0,00	0,00	0,00
15-abr.-05	1	0,00	721.123.000,64	21.200.000,00	0,00	0,00	0,00	0,00	0,00
15-may.-05	1	35.438.913,80	721.123.000,64	21.200.000,00	35.438.913,80	-161.849.519.324,60	0,00	0,00	0,00
15-jun.-05	1	0,00	685.684.086,84	21.200.000,00	0,00	0,00	0,00	0,00	0,00
15-jul.-05	1	0,00	685.684.086,84	21.200.000,00	0,00	0,00	0,00	0,00	0,00
15-ago.-05	1	40.670.101,35	685.684.086,84	21.200.000,00	40.670.101,35	-181.998.703.541,25	0,00	0,00	0,00
15-sep.-05	1	0,00	645.013.985,49	21.200.000,00	0,00	0,00	0,00	0,00	0,00
15-oct.-05	1	0,00	645.013.985,49	21.200.000,00	0,00	0,00	0,00	0,00	0,00
15-nov.-05	1	27.972.838,02	645.013.985,49	21.200.000,00	27.972.838,02	-122.604.949.041,66	0,00	0,00	0,00
15-dic.-05	1	0,00	617.041.147,47	21.200.000,00	0,00	0,00	0,00	0,00	0,00
15-ene.-06	1	0,00	617.041.147,47	21.200.000,00	0,00	0,00	0,00	0,00	0,00
15-feb.-06	1	32.546.658,75	617.041.147,47	21.200.000,00	32.546.658,75	-139.657.712.696,25	0,00	0,00	0,00
15-mar.-06	1	0,00	584.494.488,72	21.200.000,00	0,00	0,00	0,00	0,00	0,00
15-abr.-06	1	0,00	584.494.488,72	21.200.000,00	0,00	0,00	0,00	0,00	0,00
15-may.-06	1	30.608.886,55	584.494.488,72	21.200.000,00	30.608.886,55	-128.618.541.283,10	0,00	0,00	0,00
15-jun.-06	1	0,00	553.885.602,17	21.200.000,00	0,00	0,00	0,00	0,00	0,00
15-jul.-06	1	0,00	553.885.602,17	21.200.000,00	0,00	0,00	0,00	0,00	0,00
15-ago.-06	1	24.588.822,40	553.885.602,17	21.200.000,00	24.588.822,40	-101.060.060.064,00	0,00	0,00	0,00
15-sep.-06	1	0,00	529.296.779,77	21.200.000,00	0,00	0,00	0,00	0,00	0,00
15-oct.-06	1	0,00	529.296.779,77	21.200.000,00	0,00	0,00	0,00	0,00	0,00
15-nov.-06	1	21.033.977,43	529.296.779,77	21.200.000,00	21.033.977,43	-84.514.521.313,74	0,00	0,00	0,00
15-dic.-06	1	0,00	508.262.802,34	21.200.000,00	0,00	0,00	0,00	0,00	0,00
15-ene.-07	1	0,00	508.262.802,34	21.200.000,00	0,00	0,00	0,00	0,00	0,00
15-feb.-07	1	24.321.100,15	508.262.802,34	21.200.000,00	24.321.100,15	-95.484.639.188,90	0,00	0,00	0,00
15-mar.-07	1	0,00	483.941.702,19	21.200.000,00	0,00	0,00	0,00	0,00	0,00
15-abr.-07	1	0,00	483.941.702,19	21.200.000,00	0,00	0,00	0,00	0,00	0,00
15-may.-07	1	19.559.281,65	483.941.702,19	21.200.000,00	19.559.281,65	-75.048.963.691,05	0,00	0,00	0,00
15-jun.-07	1	0,00	464.382.420,54	21.200.000,00	0,00	0,00	0,00	0,00	0,00
15-jul.-07	1	0,00	464.382.420,54	21.200.000,00	0,00	0,00	0,00	0,00	0,00
15-ago.-07	1	19.726.158,91	464.382.420,54	21.200.000,00	19.726.158,91	-73.874.465.117,95	0,00	0,00	0,00
15-sep.-07	1	0,00	444.656.261,63	21.200.000,00	0,00	0,00	0,00	0,00	0,00
15-oct.-07	1	0,00	444.656.261,63	21.200.000,00	0,00	0,00	0,00	0,00	0,00
15-nov.-07	1	13.485.961,17	444.656.261,63	21.200.000,00	13.485.961,17	-49.264.216.154,01	0,00	0,00	0,00
15-dic.-07	1	0,00	431.170.300,46	21.200.000,00	0,00	0,00	0,00	0,00	0,00
15-ene.-08	1	0,00	431.170.300,46	21.200.000,00	0,00	0,00	0,00	0,00	0,00
15-feb.-08	1	19.506.102,29	431.170.300,46	21.200.000,00	19.506.102,29	-69.461.230.254,69	0,00	0,00	0,00
15-mar.-08	1	0,00	411.664.198,17	21.200.000,00	0,00	0,00	0,00	0,00	0,00
15-abr.-08	1	0,00	411.664.198,17	21.200.000,00	0,00	0,00	0,00	0,00	0,00
15-may.-08	1	15.097.836,76	411.664.198,17	21.200.000,00	15.097.836,76	-52.404.591.393,96	0,00	0,00	0,00
15-jun.-08	1	0,00	396.566.361,41	21.200.000,00	0,00	0,00	0,00	0,00	0,00
15-jul.-08	1	0,00	396.566.361,41	21.200.000,00	0,00	0,00	0,00	0,00	0,00
15-ago.-08	1	17.872.437,44	396.566.361,41	21.200.000,00	17.872.437,44	-60.390.966.109,76	0,00	0,00	0,00
15-sep.-08	1	0,00	378.693.923,97	21.200.000,00	0,00	0,00	0,00	0,00	0,00
15-oct.-08	1	0,00	378.693.923,97	21.200.000,00	0,00	0,00	0,00	0,00	0,00
15-nov.-08	1	11.203.992,04	378.693.923,97	21.200.000,00	11.203.992,04	-36.827.521.835,48	0,00	0,00	0,00
15-dic.-08	1	0,00	367.489.931,93	21.200.000,00	0,00	0,00	0,00	0,00	0,00
15-ene.-09	1	0,00	367.489.931,93	21.200.000,00	0,00	0,00	0,00	0,00	0,00
15-feb.-09	1	12.558.585,58	367.489.931,93	21.200.000,00	12.558.585,58	-40.124.680.928,10	0,00	0,00	0,00
15-mar.-09	1	0,00	354.931.346,35	21.200.000,00	0,00	0,00	0,00	0,00	0,00
15-abr.-09	1	0,00	354.931.346,35	21.200.000,00	0,00	0,00	0,00	0,00	0,00
15-may.-09	1	9.842.431,37	354.931.346,35	21.200.000,00	9.375.766,18	-29.121.129.755,67	466.665,19	-1.449.462.079,55	0,00
15-jun.-09	1	0,00	345.555.580,17	20.733.334,81	0,00	0,00	0,00	0,00	0,00
15-jul.-09	1	0,00	345.555.580,17	20.733.334,81	0,00	0,00	0,00	0,00	0,00
15-ago.-09	1	12.465.400,39	345.555.580,17	20.733.334,81	11.759.811,69	-35.444.072.429,68	705.588,70	-2.126.644.345,78	0,00

1.062.000.000,000
 6,00%
 0,75%
 15-nov.-17

69285,54

VIDA RESIDUAL DESDE

0,71

0,75

	SERIE A		SERIE B		PRINCIPAL		VIDA	
	PRINCIPAL	VIDA	PRINCIPAL	VIDA	PRINCIPAL	VIDA	PRINCIPAL	VIDA
15-sep.-09	1	0,00	333.795.768,48	20.027.746,11		0,00	0,00	0,00
15-oct.-09	1	0,00	333.795.768,48	20.027.746,11		0,00	0,00	0,00
15-nov.-09	1	12.857.526,27	333.795.768,48	20.027.746,11	12.129.741,76	-35.443.105.434,85	727.784,51	-2.126.586.326,09
15-dic.-09	1	0,00	321.666.026,72	19.299.961,60		0,00	0,00	0,00
15-ene.-10	1	0,00	321.666.026,72	19.299.961,60		0,00	0,00	0,00
15-feb.-10	1	12.584.982,31	321.666.026,72	19.299.961,60	11.872.624,82	-33.599.528.242,74	712.357,49	-2.015.971.694,56
15-mar.-10	1	0,00	309.793.401,90	18.587.604,11		0,00	0,00	0,00
15-abr.-10	1	0,00	309.793.401,90	18.587.604,11		0,00	0,00	0,00
15-may.-10	1	10.560.215,51	309.793.401,90	18.587.604,11	9.962.467,46	-27.307.123.314,07	597.748,05	-1.638.427.398,84
15-jun.-10	1	0,00	299.830.934,43	17.989.856,07		0,00	0,00	0,00
15-jul.-10	1	0,00	299.830.934,43	17.989.856,07		0,00	0,00	0,00
15-ago.-10	1	9.960.464,25	299.830.934,43	17.989.856,07	9.396.664,39	-24.891.763.960,61	563.799,86	-1.493.505.837,64
15-sep.-10	1	0,00	290.434.270,05	17.426.056,20		0,00	0,00	0,00
15-oct.-10	1	0,00	290.434.270,05	17.426.056,20		0,00	0,00	0,00
15-nov.-10	1	8.147.583,17	290.434.270,05	17.426.056,20	7.686.399,22	-19.654.122.797,82	461.183,95	-1.179.247.367,87
15-dic.-10	1	0,00	282.747.870,83	16.964.872,25		0,00	0,00	0,00
15-ene.-11	1	0,00	282.747.870,83	16.964.872,25		0,00	0,00	0,00
15-feb.-11	1	10.813.446,82	282.747.870,83	16.964.872,25	10.201.364,92	-25.146.364.538,96	612.081,90	-1.508.781.872,34
15-mar.-11	1	0,00	272.546.505,91	16.352.790,35		0,00	0,00	0,00
15-abr.-11	1	0,00	272.546.505,91	16.352.790,35		0,00	0,00	0,00
15-may.-11	1	7.940.170,85	272.546.505,91	16.352.790,35	7.490.727,22	-17.797.967.867,55	449.443,63	-1.067.878.072,05
15-jun.-11	1	0,00	265.055.778,69	15.903.346,72		0,00	0,00	0,00
15-jul.-11	1	0,00	265.055.778,69	15.903.346,72		0,00	0,00	0,00
15-ago.-11	1	7.680.966,69	265.055.778,69	15.903.346,72	7.246.194,99	-16.550.309.358,45	434.771,70	-993.018.561,51
15-sep.-11	1	0,00	257.809.583,70	15.468.575,02		0,00	0,00	0,00
15-oct.-11	1	0,00	257.809.583,70	15.468.575,02		0,00	0,00	0,00
15-nov.-11	1	6.853.524,21	257.809.583,70	15.468.575,02	6.465.588,88	-14.172.570.819,17	387.935,33	-850.354.249,15
15-dic.-11	1	0,00	251.343.994,82	15.080.639,69		0,00	0,00	0,00
15-ene.-12	1	0,00	251.343.994,82	15.080.639,69		0,00	0,00	0,00
15-feb.-12	1	9.533.199,13	251.343.994,82	15.080.639,69	8.993.584,08	-18.886.526.578,30	539.615,05	-1.133.191.594,70
15-mar.-12	1	0,00	242.350.410,74	14.541.024,64		0,00	0,00	0,00
15-abr.-12	1	0,00	242.350.410,74	14.541.024,64		0,00	0,00	0,00
15-may.-12	1	9.033.021,26	242.350.410,74	14.541.024,64	8.521.718,17	-17.128.653.521,32	511.303,09	-1.027.719.211,28
15-jun.-12	1	0,00	233.828.692,57	14.029.721,55		0,00	0,00	0,00
15-jul.-12	1	0,00	233.828.692,57	14.029.721,55		0,00	0,00	0,00
15-ago.-12	1	8.007.339,51	233.828.692,57	14.029.721,55	7.554.093,88	-14.488.752.056,77	453.245,63	-869.325.123,41
15-sep.-12	1	0,00	226.274.598,69	13.576.475,92		0,00	0,00	0,00
15-oct.-12	1	0,00	226.274.598,69	13.576.475,92		0,00	0,00	0,00
15-nov.-12	1	7.186.508,19	226.274.598,69	13.576.475,92	6.779.724,71	-12.379.777.315,98	406.783,48	-742.786.638,96
15-dic.-12	1	0,00	219.494.873,98	13.169.692,44		0,00	0,00	0,00
15-ene.-13	1	0,00	219.494.873,98	13.169.692,44		0,00	0,00	0,00
15-feb.-13	1	8.517.496,57	219.494.873,98	13.169.692,44	8.035.374,12	-13.933.338.728,66	482.122,45	-836.000.323,72
15-mar.-13	1	0,00	211.459.499,86	12.687.569,99		0,00	0,00	0,00
15-abr.-13	1	0,00	211.459.499,86	12.687.569,99		0,00	0,00	0,00
15-may.-13	1	6.973.863,92	211.459.499,86	12.687.569,99	6.579.116,91	-10.822.647.309,81	394.747,01	-649.358.838,59
15-jun.-13	1	0,00	204.880.382,95	12.292.822,98		0,00	0,00	0,00
15-jul.-13	1	0,00	204.880.382,95	12.292.822,98		0,00	0,00	0,00
15-ago.-13	1	6.515.003,52	204.880.382,95	12.292.822,98	6.515.003,52	-10.117.800.466,56	0,00	0,00
15-sep.-13	1	0,00	198.365.379,43	12.292.822,98		0,00	0,00	0,00
15-oct.-13	1	0,00	198.365.379,43	12.292.822,98		0,00	0,00	0,00
15-nov.-13	1	6.080.651,22	198.365.379,43	12.292.822,98	5.367.689,63	-7.842.194.550,81	712.961,59	-1.041.636.881,61
15-dic.-13	1	0,00	192.997.689,80	11.579.861,39		0,00	0,00	0,00
15-ene.-14	1	0,00	192.997.689,80	11.579.861,39		0,00	0,00	0,00
15-feb.-14	1	7.153.270,94	192.997.689,80	11.579.861,39	6.748.368,81	-9.238.516.902,70	404.902,13	-554.311.014,16
15-mar.-14	1	0,00	186.249.320,99	11.174.959,26		0,00	0,00	0,00
15-abr.-14	1	0,00	186.249.320,99	11.174.959,26		0,00	0,00	0,00
15-may.-14	1	7.469.918,55	186.249.320,99	11.174.959,26	7.047.092,97	-9.020.279.003,77	422.825,58	-541.216.740,23
15-jun.-14	1	0,00	179.202.228,02	10.752.133,68		0,00	0,00	0,00
15-jul.-14	1	0,00	179.202.228,02	10.752.133,68		0,00	0,00	0,00
15-ago.-14	1	6.039.715,18	179.202.228,02	10.752.133,68	5.697.844,51	-6.769.039.277,21	341.870,67	-406.142.356,63
15-sep.-14	1	0,00	173.504.383,51	10.410.263,01		0,00	0,00	0,00
15-oct.-14	1	0,00	173.504.383,51	10.410.263,01		0,00	0,00	0,00
15-nov.-14	1	5.749.172,43	173.504.383,51	10.410.263,01	5.423.747,58	-5.944.427.342,72	325.424,85	-356.665.640,56
15-dic.-14	1	0,00	168.080.635,93	10.084.838,16		0,00	0,00	0,00
15-ene.-15	1	0,00	168.080.635,93	10.084.838,16		0,00	0,00	0,00
15-feb.-15	1	6.377.229,41	168.080.635,93	10.084.838,16	6.016.254,16	-6.040.319.177,02	360.975,25	-362.419.150,62
15-mar.-15	1	0,00	162.064.381,77	9.723.862,91		0,00	0,00	0,00
15-abr.-15	1	0,00	162.064.381,77	9.723.862,91		0,00	0,00	0,00
15-may.-15	1	5.853.288,37	162.064.381,77	9.723.862,91	5.521.970,16	-5.052.602.696,75	331.318,21	-303.156.161,80
15-jun.-15	1	0,00	156.542.411,61	9.392.544,70		0,00	0,00	0,00
15-jul.-15	1	0,00	156.542.411,61	9.392.544,70		0,00	0,00	0,00
15-ago.-15	1	5.475.052,69	156.542.411,61	9.392.544,70	5.165.144,05	-4.250.913.550,82	309.908,64	-255.054.813,05
15-sep.-15	1	0,00	151.377.267,57	9.082.636,05		0,00	0,00	0,00
15-oct.-15	1	0,00	151.377.267,57	9.082.636,05		0,00	0,00	0,00
15-nov.-15	1	4.883.517,83	151.377.267,57	9.082.636,05	4.883.517,83	-3.569.851.533,73	0,00	0,00
15-dic.-15	1	0,00	146.493.749,74	9.082.636,05		0,00	0,00	0,00
15-ene.-16	1	0,00	146.493.749,74	9.082.636,05		0,00	0,00	0,00
15-feb.-16	1	6.343.306,10	146.493.749,74	9.082.636,05	6.343.306,10	-4.053.372.597,90	0,00	0,00
15-mar.-16	1	0,00	140.150.443,64	9.082.636,05		0,00	0,00	0,00
15-abr.-16	1	0,00	140.150.443,64	9.082.636,05		0,00	0,00	0,00
15-may.-16	1	6.066.214,96	140.150.443,64	9.082.636,05	5.087.363,70	-2.792.962.672,44	978.851,26	-537.389.340,60
15-jun.-16	1	0,00	135.063.079,93	8.103.784,80		0,00	0,00	0,00
15-jul.-16	1	0,00	135.063.079,93	8.103.784,80		0,00	0,00	0,00
15-ago.-16	1	5.991.015,59	135.063.079,93	8.103.784,80	5.852.177,79	-2.674.445.250,03	138.837,80	-63.448.874,60
15-sep.-16	1	0,00	129.210.902,14	7.964.947,00		0,00	0,00	0,00

1.062.000.000,000
 6,00%
 0,75%
 15-nov.-17

69285,54

VIDA RESIDUAL DESDE

0,71

0,75

	Principal	SERIE A	SERIE B	SERIE A PRINCIPAL	VIDA	SERIE B PRINCIPAL	VIDA	
15-oct.-16 1	0,00	129.210.902,14	7.964.947,00	0,00	0,00	0,00	0,00	0,00
15-nov.-16 1	4.788.076,89	129.210.902,14	7.964.947,00	4.788.076,89	-1.747.648.064,85	0,00	0,00	0,00
15-dic.-16 1	0,00	124.422.825,25	7.964.947,00	0,00	0,00	0,00	0,00	0,00
15-ene.-17 1	0,00	124.422.825,25	7.964.947,00	0,00	0,00	0,00	0,00	0,00
15-feb.-17 1	5.791.639,28	124.422.825,25	7.964.947,00	5.791.639,28	-1.581.117.523,44	0,00	0,00	0,00
15-mar.-17 1	0,00	118.631.185,97	7.964.947,00	0,00	0,00	0,00	0,00	0,00
15-abr.-17 1	0,00	118.631.185,97	7.964.947,00	0,00	0,00	0,00	0,00	0,00
15-may.-17 1	4.743.060,59	118.631.185,97	7.964.947,00	4.743.060,59	-872.723.148,56	0,00	0,00	0,00
15-jun.-17 1	0,00	113.888.125,38	7.964.947,00	0,00	0,00	0,00	0,00	0,00
15-jul.-17 1	0,00	113.888.125,38	7.964.947,00	0,00	0,00	0,00	0,00	0,00
15-ago.-17 1	4.718.760,94	113.888.125,38	7.964.947,00	4.718.760,94	-434.126.006,48	0,00	0,00	0,00
15-sep.-17 1	0,00	109.169.364,44	7.964.947,00	0,00	0,00	0,00	0,00	0,00
15-oct.-17 1	0,00	109.169.364,44	7.964.947,00	0,00	0,00	0,00	0,00	0,00
15-nov.-17 1	4.133.462,12	109.169.364,44	7.964.947,00	4.133.462,12	0,00	0,00	0,00	0,00
15-dic.-17 1	0,00	105.035.902,32	7.964.947,00	0	0,00	0,00	0,00	0,00
15-ene.-18 1	0,00	105.035.902,32	7.964.947,00	0	0,00	0,00	0,00	0,00
15-feb.-18 1	4.894.492,01	105.035.902,32	7.964.947,00	4.894.492,01	450.293.265,07	0,00	0,00	0,00
15-mar.-18 1	0,00	100.141.410,31	7.964.947,00	0	0	0,00	0,00	0,00
15-abr.-18 1	0,00	100.141.410,31	7.964.947,00	0	0	0,00	0,00	0,00
15-may.-18 1	4.757.520,11	100.141.410,31	7.964.947,00	4.757.520,11	861.111.140,23	0,00	0,00	0,00
15-jun.-18 1	0,00	95.383.890,20	7.964.947,00	0,00	0,00	0,00	0,00	0,00
15-jul.-18 1	0,00	95.383.890,20	7.964.947,00	0,00	0,00	0,00	0,00	0,00
15-ago.-18 1	103.349.771,38	95.383.890,20	7.964.947,00	95.383.890,20	26.039.802.024,77	7.964.947,00	2.174.430.529,92	