



FONDO DE TITULIZACIÓN HIPOTECARIA HIPOTEBANSA VIII

Francisco Fortes Clavero
Analyst
Santander de Titulización
Ciudad Grupo Santander
Ed. Encinar 28660 Boadilla del Monte
ffortes@gruposantander.com
Tel: +34 91 289 32 90



FONDO DE TITULIZACION HIPOTECARIA : HIPOTEBANSA 8

I. DATA OF THE FUND

Constitution Date	December 17th 1998.	Paying Agent	Banco Santander	
Disbursement Date	December 22th 1998.	Negotiation Market	AIAF	
Final Date of Redemption	December 15th 2028.	Rating Agencies	Fitch IBCA Moody's España	
Gestora	Santander de Titulización	Calification	Inicial	Actual
MP's Seller	Banco Santander	Class A	AAA/Aaa	AAA/Aaa
SWAP Counterparty	Banco Santander	Class B	A/A2	A+/A2

II. SECURITIES ISSUED CHARGED TO THE FUND: SECURITISATION BONDS

CLASS PRIORITY	NUMBER OF BONDS		NOMINAL		
			INITIAL	CURRENT	%Cur//Ini
Class A		Nominal per Bond	150.253,03	21.346,70 €	
(ISIN=ES0315227001)	2.126	Total Nominal	319.437.933,48	45.383.084,20 €	14,21%
Class B		Nominal per Bond	150.253,03	76.920,50 €	
(ISIN=ES0315227019)	59	Total Nominal	8.864.928,54	4.538.309,50 €	51,19%

REDEMPTION AND INTEREST OF THE BONDS			
	Current		Next
Current Redemption Date	16/06/2008	Next Coupon Date	15/09/2008
Principal accrued per Bond and not paid	0	Interest Rate	Serie A- 5,2976% Serie B- 5,8349%
Bullet	NO		
Class A Redemption	1.127,00 €	Gross Interest	Serie A- 281,94 €
Class B Redemption	4.061,00 €	Next Coupon Date	Serie B- 1.118,98 €
Class A Gross Interest	276,87 €	Net Interest	Serie A- 231,19 €
Class B Gross Interest	1.106,16 €	Next Coupon Date	Serie B- 917,57 €

III. ASSET PURCHASED BY THE FUND: MORTGAGES PARTICIPATIONS

MORTGAGES PARTICIPATION	ISSUE DATE	CURRENT DATE
Number of loans	5.730	1.871
Credit Rights Outstanding Balance to be amortised	328.303.109,52 €	49.921.401,77 €
Credit Rights Outstanding Balance per loan to be amortised	57.295,48 €	26.681,67 €
Rate Interest	5,28%	5,35%

PREPAYMENT RATE	CURRENT SITUATION
Monthly Single Rate	2,39%
Average Monthly Single Rate	10,19%
Constant Prepayment Rate from Constitution	11,42%



**FONDO DE TITULIZACIÓN HIPOTECARIA
HIPOTEBANSA VIII**

QUARTERLY BTH'S PAYOUT REPORT

Report date: June 16th, 2008

BONDS PRINCIPAL	
PREVIOUS BALANCE:	52.556.994,70 €
PRINCIPAL AMORTISED:	2.635.601,00 €
OUTSTANDING BALANCE:	49.921.393,70 €
% OF INITIAL BALANCE:	15,21%
PRINCIPAL ACCRUED NOT PAID:	0,00

DATA	
Determination Date	June 9, 2008
Payment Date	June 16, 2008
Last Payment Date	March 17, 2008
Num of Days (Act/360)	91
3 Months Libor(%)	4,95500%
Next Payment Date	September 15, 2008

ACUMULATIVE INTEREST PAID TO	
BTH'S HOLDERS AS OF PREVIOUS PAYMENT DATE:	59.280.721,77 €
INTEREST PAID ON July 16th, 2008	653.889,06 €
CUMULATIVE INTEREST PAID TO BTH'S HOLDERS UP TO DATE:	59.934.610,83 €

RESIDUAL LIFE (YEARS)		
	Initial	June 16, 2008
Class A	7,2	1,62
Class B	13,6	1,65



**FONDO DE TITULIZACIÓN HIPOTECARIA
HIPOTEBANSA VIII**

QUARTERLY COLLATERAL REPORT

Report date: June 16th, 2008

MP'S PRINCIPAL	
PREVIOUS BALANCE:	52.556.992,11 €
PRINCIPAL AMORTISED:	2.635.590,34 €
OUTSTANDING BALANCE:	49.921.401,77 €
NUMBER OF LOANS:	1.871
LTV	35,49%

INTEREST	
INTEREST RECEIVED DURING RELEVANT PERIOD:	672.912,26
INTEREST ACCRUED DURING RELEVANT PERIOD:	689.068,07

TRANSITORY PROPERTY	
OUTSTANDING BALANCE:	0,00 €
NUM OF TRANSIT. PRO.:	0

MP'S IN ARREARS					
MP'S IN ARREARS	UP TO 30 DAYS	30 TO 60 DAYS	60 TO 90 DAYS	90 TO 180 DAYS	OVER 180 DAYS
PRINCIPAL BALANCE IN ARREARS:	500,78 €	3.782,77 €	1.072,48 €	911,15 €	0,00 €
INTEREST ACCRUED ON PH'S IN ARREARS:	186,17 €	1.164,91 €	496,85 €	695,94 €	0,00 €
OUTSTANDING BALANCE:	23.935,65 €	237.627,87 €	65.985,77 €	153.713,10 €	31.291,06 €
NUMBER OF LOANS:	2	10	4	5	5
% OF OUTSTANDING BALANCE	0,05%	0,48%	0,13%	0,31%	0,06%

This Report does not include loans in arrears from 0 to 15 days, as it is considered a technical arrear with a high percentage of recovery.

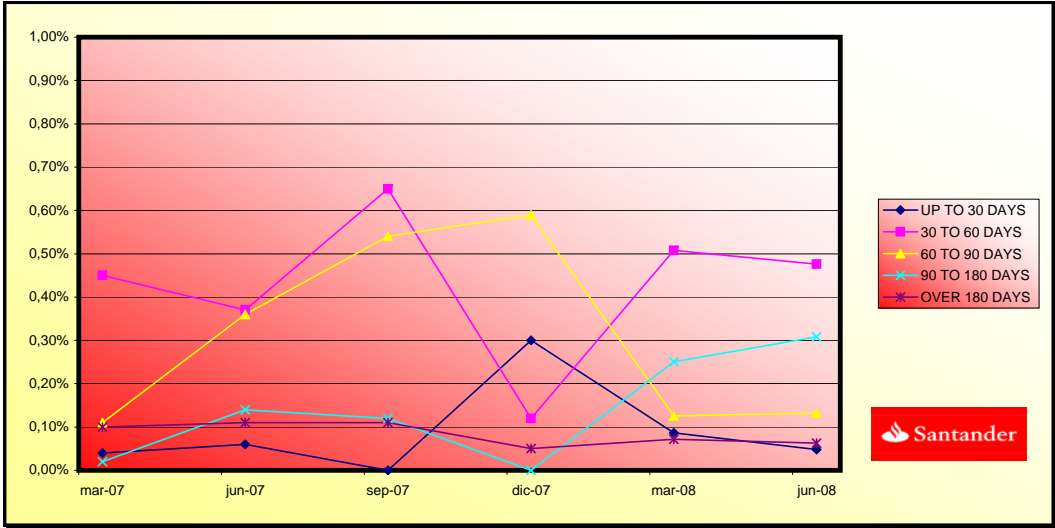
LTV				
	OUTS, BALANCE	% OUTSTANDING	NUMBER LOANS	% NUM LOANS
0-9,99	1.959,79 €	3,92%	350	18,70%
10-19,99	6.255,97 €	12,53%	381	20,36%
20-29,99	11.142,31 €	22,33%	442	23,62%
30-39,99	10.344,62 €	20,73%	292	15,60%
40-49,99	11.881,45 €	23,81%	266	14,21%
50-59,99	5.973,64 €	11,97%	109	5,82%
60-69,99	2.332,30 €	4,67%	31	1,63%
70-79,99	0,00 €	0,00%	0	0,00%
>80	0,00 €	0,00%	0	0,00%



**FONDO DE TITULIZACIÓN HIPOTECARIA
HIPOTEBANSA VIII**

Report date: June 16th, 2008

ARREARS PERFORMANCE						
	10/03/2007	10/06/2007	10/09/2007	10/12/2007	10/03/2008	09/06/2008
UP TO 30 DAYS	0,04%	0,06%	0,00%	0,30%	0,09%	0,05%
30 TO 60 DAYS	0,45%	0,37%	0,65%	0,12%	0,51%	0,48%
60 TO 90 DAYS	0,11%	0,36%	0,54%	0,59%	0,13%	0,13%
90 TO 180 DAYS	0,02%	0,14%	0,12%	0,00%	0,25%	0,31%
OVER 180 DAYS	0,10%	0,11%	0,11%	0,05%	0,07%	0,06%





**FONDO DE TITULIZACIÓN HIPOTECARIA
HIPOTEBANSA VIII**

QUARTERLY REPORT - ALLOCATION OF CASH

Report date: June 16th, 2008

TOTAL CASH RECEIVED END OF PERIOD:		3.355.677,58 €
a) CASH RECEIVED - PRINCIPAL		
1. AMORTIZATION OF PH'S:		2.619.837,07 €
b) CASH RECEIVED - INTEREST		
1. INTEREST RECEIVED FROM MP'S:		672.912,26 €
2. INTEREST RECEIVED UNDER GIC:		42.872,39 €
c) CONTENTIUS COLLECTION		20.055,86 €

TOTAL CASH PAID END OF PERIOD:		3.355.677,58 €
1. CURRENT EXPENSES:		
2. NET INTEREST UNDER CLASS A SWAP:		21.730,51 €
3. INTEREST PAID TO BTH'S A HOLDERS:		-34.265,00 €
3. INTEREST PAID TO BTH'S A HOLDERS:		588.625,62 €
4. AMORTIZATION OF BTH'S A:		2.635.601,00 €
5. NET INTEREST UNDER CLASS B SWAP:		-9.828,04 €
6. INTEREST PAID TO BTH'S B HOLDERS:		65.263,44 €
7. INTEREST PAID ON SUBORDINATED LOAN:		18.386,18 €
8. REPAYMENT OF SUBORDINATED LOAN:		40.588,09 €
9. FEE IN FAVOUR OF SANTANDER		70.163,87 €
10. UTILIZATIONS OF PRINCIPAL AND SECONDARY RESERVE FUND:		-40.588,09 €

TREASURY ACCOUNT STATEMENT		1.589.546,75 €
a) RELATED TO THE PRINCIPAL RESERVE FUND		
1. PREVIOUS BALANCE:		651.706,70 €
2. PERIOD UTILIZATION:		-32.681,32 €
3. OUTSTANDING BALANCE:		619.025,38 €
b) RELATED TO THE SECONDARY RESERVE FUND		
1. PREVIOUS PERIOD RETENCION:		978.428,14 €
2. PERIOD UTILIZATION:		-7.906,77 €
3. OUTSTANDING BALANCE:		970.521,37 €
c) WITHHOLDING ON BTH'S INTEREST TO BE PAID		0,00 €



**FONDO DE TITULIZACIÓN HIPOTECARIA
HIPOTEBANSA VIII**

CREDIT ENHANCEMENT AND SUBORDINATED LOAN

Report date: June 16th, 2008

CREDIT ENHANCEMENT		
CONCEPTS	22/12/1998	June 16, 2008
SUBORDINATED ISSUE	2,70%	9,09%
PRINCIPAL RESERVE FUND	4.070.955,49 €(1,24%)	619.025,38(1,24%)
SECONDARY RESERVE FUND	1.805.665,74 €(0,55%)	970.521.37(1,94%)
EXCESS SPREAD	0,65%	0,65%

SUBORDINATED LOAN		
CONCEPTS	22/12/1998	June 16, 2008
TOTAL OUTSTANDING	6.999.386,97 €	1.590.977,90 €
INTEREST RATE	4,63	4,70



FONDO DE TITULIZACIÓN HIPOTECARIA
HIPOTEBANSA VIII

TRIGGERS

Report date: June 16th, 2008

CLASS B REDEMPTION	
IF 1) IS HIGHER THAN 2) CLASS B IS NOT AMORTISED	
1) MP'S IN ARREARS OVER 90 DAYS	185.004,16 €
2) 7% MP'S OUTSTANDING BALANCE	3.494.498,12 €

CLASS B IS AMORTISED

PREPAYMENTS - HIPOTEBANSA VIII

June 17, 2008

Date	Outstanding before prepayment 0,166386	Real outstanding	1,01% Prepayment vector	Remaining at the end of the month	Average Single monthly mortality	CPR	Monthly Single monthly mortality	CPR	Outstanding after prepayment
						11,41%		10,19%	
1	328.303,1		100,00%	100,00%					328.303,1
2	1-ene-99	327.099,8	324.774,7	98,99%	99,29%	0,71%	8,20%	0,71%	323.812,3
3	1-feb-99	325.891,2	322.035,2	98,00%	98,82%	0,59%	6,89%	0,48%	319.373,4
4	1-mar-99	324.677,2	318.871,9	97,02%	98,21%	0,60%	6,96%	0,61%	314.985,9
5	1-abr-99	323.458,0	315.254,0	96,04%	97,46%	0,64%	7,42%	0,76%	310.649,1
6	1-may-99	322.233,3	312.636,8	95,07%	97,02%	0,60%	7,00%	0,45%	306.362,6
7	1-jun-99	321.003,3	310.219,2	94,12%	96,64%	0,57%	6,61%	0,39%	302.125,9
8	1-jul-99	319.768,4	306.315,7	93,17%	95,79%	0,61%	7,10%	0,88%	297.938,8
9	1-ago-99	318.528,1	303.968,7	92,24%	95,43%	0,58%	6,78%	0,38%	293.800,3
10	1-sep-99	317.282,2	302.078,6	91,31%	95,21%	0,54%	6,34%	0,23%	289.709,9
11	1-oct-99	316.031,0	299.040,4	90,39%	94,62%	0,55%	6,42%	0,61%	285.667,1
12	1-nov-99	314.774,2	295.825,4	89,48%	93,98%	0,56%	6,55%	0,68%	281.671,4
13	1-dic-99	313.511,8	293.273,5	88,58%	93,54%	0,55%	6,46%	0,46%	277.722,3
14	1-ene-00	312.244,0	288.901,9	87,69%	92,52%	0,60%	6,92%	1,09%	273.819,2
15	1-feb-00	310.970,5	285.830,5	86,81%	91,92%	0,60%	6,97%	0,66%	269.961,7
16	1-mar-00	309.691,4	282.881,4	85,94%	91,34%	0,60%	6,99%	0,62%	266.149,2
17	1-abr-00	308.406,8	279.693,0	85,08%	90,69%	0,61%	7,07%	0,72%	262.381,3
18	1-may-00	307.116,4	276.956,5	84,22%	90,18%	0,61%	7,04%	0,56%	258.657,5
19	1-jun-00	305.820,4	274.158,8	83,37%	89,65%	0,61%	7,03%	0,59%	254.977,4
20	1-jul-00	304.519,7	269.788,1	82,54%	88,59%	0,64%	7,36%	1,17%	251.341,2
21	1-ago-00	303.213,3	265.998,8	81,71%	87,73%	0,65%	7,56%	0,98%	247.747,7
22	1-sep-00	301.901,2	263.416,1	80,89%	87,25%	0,65%	7,50%	0,54%	244.196,4
23	1-oct-00	300.583,3	261.530,4	80,07%	87,01%	0,63%	7,31%	0,28%	240.686,8
24	1-nov-00	299.259,6	259.951,5	79,27%	86,86%	0,61%	7,08%	0,16%	237.218,5
25	1-dic-00	297.930,1	257.382,3	78,47%	86,39%	0,61%	7,05%	0,55%	233.791,0
26	1-ene-01	296.595,0	253.846,8	77,68%	85,59%	0,62%	7,20%	0,93%	230.404,2
27	1-feb-01	295.254,1	250.678,5	76,90%	84,90%	0,63%	7,28%	0,80%	227.057,4
28	1-mar-01	293.907,2	247.405,3	76,13%	84,18%	0,64%	7,37%	0,85%	223.750,0
29	1-abr-01	292.554,5	244.333,0	75,36%	83,52%	0,64%	7,43%	0,79%	220.481,7
30	1-may-01	291.195,8	241.627,7	74,61%	82,98%	0,64%	7,43%	0,65%	217.252,1
31	1-jun-01	289.831,1	239.231,8	73,86%	82,54%	0,64%	7,39%	0,53%	214.060,7
32	1-jul-01	288.461,0	235.542,8	73,11%	81,66%	0,65%	7,55%	1,07%	210.907,6
33	1-ago-01	287.084,9	232.144,3	72,38%	80,86%	0,66%	7,66%	0,97%	207.791,8
34	1-sep-01	285.702,7	229.852,5	71,65%	80,45%	0,66%	7,60%	0,51%	204.713,0
35	1-oct-01	284.314,5	226.825,2	70,93%	79,78%	0,66%	7,66%	0,84%	201.670,9
36	1-nov-01	282.920,1	224.355,6	70,22%	79,30%	0,66%	7,64%	0,60%	198.664,9
37	1-dic-01	281.519,6	220.002,5	69,51%	78,15%	0,68%	7,89%	1,45%	195.694,7
38	1-ene-02	280.113,9	216.525,1	68,82%	77,30%	0,69%	8,01%	1,09%	192.760,5
39	1-feb-02	278.702,0	213.322,5	68,12%	76,54%	0,70%	8,10%	0,98%	189.861,3
40	1-mar-02	277.283,9	210.772,1	67,44%	76,01%	0,70%	8,09%	0,69%	186.996,8
41	1-abr-02	275.859,5	208.152,7	66,76%	75,46%	0,70%	8,10%	0,73%	184.166,5
42	1-may-02	274.428,9	204.446,9	66,09%	74,50%	0,72%	8,26%	1,27%	181.370,0
43	1-jun-02	272.992,0	201.084,3	65,43%	73,66%	0,73%	8,36%	1,13%	178.607,1
44	1-jul-02	271.549,9	197.632,6	64,77%	72,78%	0,74%	8,49%	1,19%	175.878,0
45	1-ago-02	270.101,6	194.571,4	64,12%	72,04%	0,74%	8,56%	1,02%	173.181,7
46	1-sep-02	268.646,8	192.391,2	63,47%	71,61%	0,74%	8,52%	0,59%	170.517,7
47	1-oct-02	267.185,6	189.734,9	62,83%	71,01%	0,74%	8,54%	0,84%	167.885,8
48	1-nov-02	265.718,0	186.207,6	62,20%	70,08%	0,75%	8,68%	1,32%	165.285,6
49	1-dic-02	264.244,0	183.383,7	61,58%	69,40%	0,76%	8,73%	0,97%	162.716,7
50	1-ene-03	262.767,9	179.522,5	60,96%	68,32%	0,77%	8,91%	1,56%	160.181,5
51	1-feb-03	261.285,3	176.640,3	60,35%	67,60%	0,78%	8,97%	1,05%	157.677,0
52	1-mar-03	259.796,2	173.695,7	59,74%	66,86%	0,79%	9,04%	1,10%	155.202,6
53	1-abr-03	258.300,5	171.781,2	59,14%	66,50%	0,78%	8,98%	0,53%	152.758,2
54	1-may-03	256.798,3	168.774,8	58,55%	65,72%	0,79%	9,07%	1,18%	150.343,5
55	1-jun-03	255.289,4	165.879,9	57,96%	64,98%	0,80%	9,14%	1,13%	147.958,0
56	1-jul-03	253.801,8	162.667,2	57,37%	64,09%	0,81%	9,25%	1,36%	145.617,4

57	1-ago-03	252.307,6	159.583,4	56,80%	63,25%	0,81%	9,35%	1,31%	14,69%	143.305,2
58	1-sep-03	250.806,8	157.836,5	56,23%	62,93%	0,81%	9,29%	0,50%	5,87%	141.021,1
59	1-oct-03	249.299,5	155.484,2	55,66%	62,37%	0,81%	9,31%	0,89%	10,22%	138.764,7
60	1-nov-03	247.785,5	151.070,7	55,10%	60,97%	0,84%	9,57%	2,24%	23,85%	136.535,8
61	1-dic-03	246.264,8	148.466,0	54,55%	60,29%	0,84%	9,63%	1,12%	12,61%	134.334,1
62	1-ene-04	244.750,9	144.181,1	54,00%	58,91%	0,86%	9,89%	2,29%	24,23%	132.166,5
63	1-feb-04	243.230,3	141.450,7	53,46%	58,16%	0,87%	9,96%	1,28%	14,33%	130.025,3
64	1-mar-04	241.703,1	139.526,7	52,92%	57,73%	0,87%	9,94%	0,74%	8,49%	127.910,2
65	1-abr-04	240.169,1	136.041,0	52,39%	56,64%	0,88%	10,11%	1,88%	20,32%	125.821,1
66	1-may-04	238.628,4	133.342,0	51,86%	55,88%	0,89%	10,19%	1,35%	15,06%	123.757,4
67	1-jun-04	237.080,9	131.087,8	51,34%	55,29%	0,89%	10,21%	1,05%	11,88%	121.719,1
68	1-jul-04	235.541,8	129.049,6	50,82%	54,79%	0,89%	10,22%	0,91%	10,41%	119.713,5
69	1-ago-04	233.995,9	126.740,5	50,31%	54,16%	0,90%	10,26%	1,14%	12,86%	117.732,6
70	1-sep-04	232.443,2	120.081,8	49,81%	51,66%	0,95%	10,85%	4,62%	43,32%	115.776,0
71	1-oct-04	230.883,7	117.674,7	49,31%	50,97%	0,96%	10,91%	1,34%	14,97%	113.843,4
72	1-nov-04	229.317,3	115.106,8	48,81%	50,20%	0,97%	11,00%	1,51%	16,73%	111.934,6
73	1-dic-04	227.744,1	113.483,0	48,32%	49,83%	0,96%	10,96%	0,73%	8,41%	110.049,4
74	1-ene-05	226.177,6	110.418,3	47,84%	48,82%	0,98%	11,12%	2,03%	21,78%	108.194,1
75	1-feb-05	224.604,3	108.164,9	47,36%	48,16%	0,98%	11,17%	1,35%	15,10%	106.361,6
76	1-mar-05	223.024,1	105.899,0	46,88%	47,48%	0,99%	11,23%	1,40%	15,58%	104.551,8
77	1-abr-05	221.436,9	104.153,6	46,41%	47,04%	0,99%	11,23%	0,94%	10,75%	102.764,4
78	1-may-05	219.842,7	102.143,6	45,94%	46,46%	0,99%	11,26%	1,22%	13,68%	100.999,2
79	1-jun-05	218.241,5	100.158,7	45,48%	45,89%	0,99%	11,29%	1,22%	13,74%	99.255,9
80	1-jul-05	216.648,4	98.055,6	45,02%	45,26%	1,00%	11,34%	1,38%	15,36%	97.541,1
81	1-ago-05	215.048,4	96.136,0	44,57%	44,70%	1,00%	11,38%	1,23%	13,78%	95.847,6
82	1-sep-05	213.441,2	94.617,9	44,12%	44,33%	1,00%	11,35%	0,84%	9,61%	94.175,2
83	1-oct-05	211.827,1	93.261,9	43,68%	44,03%	1,00%	11,31%	0,68%	7,89%	92.523,7
84	1-nov-05	210.205,8	91.161,9	43,24%	43,37%	1,00%	11,38%	1,50%	16,56%	90.892,7
85	1-dic-05	208.577,4	89.308,3	42,81%	42,82%	1,00%	11,41%	1,27%	14,20%	89.282,2
86	1-ene-06	206.951,9	87.421,3	42,38%	42,24%	1,01%	11,45%	1,34%	14,99%	87.696,0
87	1-feb-06	205.319,2	85.627,5	41,95%	41,70%	1,01%	11,49%	1,27%	14,25%	86.129,8
88	1-mar-06	203.679,4	83.842,5	41,53%	41,16%	1,02%	11,52%	1,30%	14,49%	84.583,1
89	1-abr-06	202.032,4	82.099,3	41,11%	40,64%	1,02%	11,56%	1,28%	14,33%	83.055,9
90	1-may-06	200.378,1	80.700,2	40,70%	40,27%	1,02%	11,54%	0,89%	10,20%	81.548,0
91	1-jun-06	198.716,5	78.608,3	40,29%	39,56%	1,03%	11,63%	1,78%	19,37%	80.058,9
92	1-jul-06	197.076,8	77.361,9	39,88%	39,25%	1,02%	11,60%	0,77%	8,82%	78.600,4
93	1-ago-06	195.429,9	75.928,8	39,48%	38,85%	1,02%	11,60%	1,03%	11,63%	77.160,2
94	1-sep-06	193.775,8	74.801,2	39,09%	38,60%	1,02%	11,56%	0,64%	7,46%	75.738,1
95	1-oct-06	192.114,3	73.641,8	38,69%	38,33%	1,01%	11,52%	0,70%	8,07%	74.334,1
96	1-nov-06	190.445,6	72.294,3	38,30%	37,96%	1,01%	11,52%	0,97%	11,03%	72.947,8
97	1-dic-06	188.769,5	70.734,4	37,92%	37,47%	1,02%	11,55%	1,29%	14,42%	71.579,1
98	1-ene-07	187.103,7	69.108,7	37,54%	36,94%	1,02%	11,59%	1,43%	15,86%	70.234,4
99	1-feb-07	185.430,5	67.689,7	37,16%	36,50%	1,02%	11,61%	1,17%	13,17%	68.906,7
100	1-mar-07	183.750,0	66.705,8	36,79%	36,30%	1,02%	11,56%	0,55%	6,43%	67.596,0
101	1-abr-07	182.062,0	65.495,7	36,42%	35,97%	1,02%	11,55%	0,90%	10,32%	66.301,9
102	1-may-07	180.366,7	64.489,1	36,05%	35,75%	1,01%	11,50%	0,61%	7,09%	65.024,3
103	1-jun-07	178.663,8	63.339,0	35,69%	35,45%	1,01%	11,49%	0,85%	9,71%	63.763,1
104	1-jul-07	176.965,2	62.096,4	35,33%	35,09%	1,01%	11,49%	1,02%	11,59%	62.522,1
105	1-ago-07	175.259,2	60.696,5	34,98%	34,63%	1,01%	11,52%	1,30%	14,56%	61.297,0
106	1-sep-07	173.545,6	60.072,2	34,62%	34,61%	1,01%	11,42%	0,05%	0,61%	60.087,7
107	1-oct-07	171.824,5	59.296,8	34,28%	34,51%	1,00%	11,35%	0,30%	3,57%	58.893,8
108	1-nov-07	170.095,8	58.528,3	33,93%	34,41%	0,99%	11,28%	0,29%	3,46%	57.715,4
109	1-dic-07	168.359,5	58.065,3	33,59%	34,49%	0,98%	11,16%	-0,23%	-2,82%	56.552,1
110	1-ene-08	166.636,2	55.447,2	33,25%	33,27%	1,00%	11,41%	3,52%	34,96%	55.410,7
111	1-feb-08	164.905,4	53.765,1	32,92%	32,60%	1,01%	11,51%	2,02%	21,68%	54.284,0
112	1-mar-08	163.166,9	53.000,0	32,59%	32,48%	1,01%	11,45%	0,37%	4,38%	53.171,9
113	1-abr-08	161.420,8	51.747,9	32,26%	32,06%	1,01%	11,48%	1,31%	14,60%	52.074,2
114	1-may-08	159.667,0	50.580,2	31,94%	31,68%	1,01%	11,49%	1,18%	13,31%	50.990,8
115	1-jun-08	157.905,5	49.921,4	31,61%	31,61%	1,01%	11,42%	0,20%	2,39%	49.921,4

DEAL 54.625
 MEZZ. DECLINN 10,00%
 MEZZ. STOPS DECLINN 1,00%
 VIDA RESIDUAL DESDE 10-jun-08

1,62

1,65

FECHA	PRINCIPAL AVAILABLE	SENIOR NOTES	MEZZANIE NOTES	SERIE A		SERIE B	
				PRINCIPAL	VIDA MEDIA	PRINCIPAL	VIDA MEDIA
			328.302.862,02				
		319.437.933	8.864.929				
8-ene-99		0 319.437.933	8.864.929	0	0	0	0
8-feb-99	1	0 319.437.933	8.864.929	0	0	0	0
8-mar-99	1	13.317.254 319.437.933	8.864.929	13.317.254	-45.038.952.438	0	0
8-abr-99	1	0 306.120.680	8.864.929	0	0	0	0
8-may-99	1	0 306.120.680	8.864.929	0	0	0	0
8-jun-99	1	12.859.989 306.120.680	8.864.929	12.859.989	-42.309.364.838	0	0
8-jul-99	1	0 293.260.690	8.864.929	0	0	0	0
8-ago-99	1	0 293.260.690	8.864.929	0	0	0	0
8-sep-99	1	12.415.953 293.260.690	8.864.929	12.415.953	-39.706.218.255	0	0
8-oct-99	1	0 280.844.737	8.864.929	0	0	0	0
8-nov-99	1	0 280.844.737	8.864.929	0	0	0	0
8-dic-99	1	11.987.629 280.844.737	8.864.929	11.987.629	-37.245.563.522	0	0
8-ene-00	1	0 268.857.108	8.864.929	0	0	0	0
8-feb-00	1	0 268.857.108	8.864.929	0	0	0	0
8-mar-00	1	11.573.071 268.857.108	8.864.929	11.573.071	-34.904.380.835	0	0
8-abr-00	1	0 257.284.038	8.864.929	0	0	0	0
8-may-00	1	0 257.284.038	8.864.929	0	0	0	0
8-jun-00	1	11.171.850 257.284.038	8.864.929	11.171.850	-32.666.489.756	0	0
8-jul-00	1	0 246.112.187	8.864.929	0	0	0	0
8-ago-00	1	0 246.112.187	8.864.929	0	0	0	0
8-sep-00	1	10.780.986 246.112.187	8.864.929	10.780.986	-30.531.751.264	0	0
8-oct-00	1	0 235.331.202	8.864.929	0	0	0	0
8-nov-00	1	0 235.331.202	8.864.929	0	0	0	0
8-dic-00	1	10.405.331 235.331.202	8.864.929	10.405.331	-28.521.011.387	0	0
8-ene-01	1	0 224.925.871	8.864.929	0	0	0	0
8-feb-01	1	0 224.925.871	8.864.929	0	0	0	0
8-mar-01	1	10.041.045 224.925.871	8.864.929	10.041.045	-26.618.811.084	0	0
8-abr-01	1	0 214.884.826	8.864.929	0	0	0	0
8-may-01	1	0 214.884.826	8.864.929	0	0	0	0
8-jun-01	1	9.689.304 214.884.826	8.864.929	9.689.304	-24.794.928.672	0	0
8-jul-01	1	0 205.195.522	8.864.929	0	0	0	0
8-ago-01	1	0 205.195.522	8.864.929	0	0	0	0
8-sep-01	1	9.347.655 205.195.522	8.864.929	9.347.655	-23.060.665.083	0	0
8-oct-01	1	0 195.847.867	8.864.929	0	0	0	0
8-nov-01	1	0 195.847.867	8.864.929	0	0	0	0
8-dic-01	1	9.018.385 195.847.867	8.864.929	9.018.385	-21.427.683.307	0	0
8-ene-02	1	0 186.829.482	8.864.929	0	0	0	0
8-feb-02	1	0 186.829.482	8.864.929	0	0	0	0
8-mar-02	1	8.697.868 186.829.482	8.864.929	8.697.868	-19.883.325.499	0	0
8-abr-02	1	0 178.131.614	8.864.929	0	0	0	0
8-may-02	1	0 178.131.614	8.864.929	0	0	0	0
8-jun-02	1	8.389.719 178.131.614	8.864.929	8.389.719	-18.407.043.381	0	0
8-jul-02	1	0 169.741.895	8.864.929	0	0	0	0
8-ago-02	1	0 169.741.895	8.864.929	0	0	0	0
8-sep-02	1	8.089.325 169.741.895	8.864.929	8.089.325	-17.003.761.477	0	0
8-oct-02	1	0 161.652.570	8.864.929	0	0	0	0

DEAL 54.625
 MEZZ. DECLINN 10,00%
 MEZZ. STOPS DECLINN 1,00%
 VIDA RESIDUAL DESDE 10-jun-08

1,62

1,65

				SERIE A		SERIE B	
8-nov-02	1	0	161.652.570	8.864.929	0	0	0
8-dic-02	1	7.801.014	161.652.570	8.864.929	7.801.014	-15.687.839.249	0
8-ene-03	1	0	153.851.556	8.864.929	0	0	0
8-feb-03	1	0	153.851.556	8.864.929	0	0	0
8-mar-03	1	7.514.099	153.851.556	8.864.929	7.514.099	-14.434.583.516	0
8-abr-03	1	0	146.337.457	8.864.929	0	0	0
8-may-03	1	0	146.337.457	8.864.929	0	0	0
8-jun-03	1	7.244.672	146.337.457	8.864.929	7.244.672	-13.250.504.765	0
8-jul-03	1	0	139.092.785	8.864.929	0	0	0
8-ago-03	1	0	139.092.785	8.864.929	0	0	0
8-sep-03	1	6.936.870	139.092.785	8.864.929	6.936.870	-12.049.343.718	0
8-oct-03	1	0	132.155.915	8.864.929	0	0	0
8-nov-03	1	0	132.155.915	8.864.929	0	0	0
8-dic-03	1	6.686.995	132.155.915	8.864.929	6.686.995	-11.006.794.210	0
8-ene-04	1	0	125.468.920	8.864.929	0	0	0
8-feb-04	1	0	125.468.920	8.864.929	0	0	0
8-mar-04	1	6.423.864	125.468.920	8.864.929	6.423.864	-9.989.107.858	0
8-abr-04	1	0	119.045.056	8.864.929	0	0	0
8-may-04	1	0	119.045.056	8.864.929	0	0	0
8-jun-04	1	6.191.108	119.045.056	8.864.929	6.191.108	-9.057.590.835	0
8-jul-04	1	0	112.853.948	8.864.929	0	0	0
8-ago-04	1	0	112.853.948	8.864.929	0	0	0
8-sep-04	1	5.943.173	112.853.948	8.864.929	5.943.173	-8.148.090.001	0
8-oct-04	1	0	106.910.775	8.864.929	0	0	0
8-nov-04	1	0	106.910.775	8.864.929	0	0	0
8-dic-04	1	5.726.535	106.910.775	8.864.929	5.726.535	-7.329.964.188	0
8-ene-05	1	0	101.184.241	8.864.929	0	0	0
8-feb-05	1	0	101.184.241	8.864.929	0	0	0
8-mar-05	1	5.497.593	101.184.241	8.864.929	5.497.593	-6.542.135.833	0
8-abr-05	1	0	95.686.648	8.864.929	0	0	0
8-may-05	1	0	95.686.648	8.864.929	0	0	0
8-jun-05	1	5.295.907	95.686.648	8.864.929	5.295.907	-5.814.905.848	0
8-jul-05	1	0	90.390.741	8.864.929	0	0	0
8-ago-05	1	0	90.390.741	8.864.929	0	0	0
8-sep-05	1	5.080.698	90.390.741	8.864.929	4.777.131	-4.805.793.665	303.568
8-oct-05	1	0	85.613.610	8.561.361	0	0	-305.388.955
8-nov-05	1	0	85.613.610	8.561.361	0	0	0
8-dic-05	1	4.893.065	85.613.610	8.561.361	4.448.241	-4.070.140.608	444.824
8-ene-06	1	0	81.165.369	8.116.537	0	0	-407.014.061
8-feb-06	1	0	81.165.369	8.116.537	0	0	0
8-mar-06	1	4.699.010	81.165.369	8.116.537	4.271.827	-3.524.257.287	427.183
8-abr-06	1	0	76.893.542	7.689.354	0	0	-352.425.729
8-may-06	1	0	76.893.542	7.689.354	0	0	0
8-jun-06	1	4.524.196	76.893.542	7.689.354	4.112.906	-3.014.759.819	411.291
8-jul-06	1	0	72.780.636	7.278.064	0	0	-301.475.982
8-ago-06	1	0	72.780.636	7.278.064	0	0	0
8-sep-06	1	4.320.821	72.780.636	7.278.064	3.928.019	-2.517.860.045	392.802
8-oct-06	1	0	68.852.617	6.885.262	0	0	-251.786.005
8-nov-06	1	0	68.852.617	6.885.262	0	0	0
8-dic-06	1	4.159.043	68.852.617	6.885.262	3.780.949	-2.079.521.738	378.095
8-ene-07	1	0	65.071.669	6.507.167	0	0	-207.952.174

DEAL 54.625
 MEZZ. DECLINN 10,00%
 MEZZ. STOPS DECLINN 1,00%
 VIDA RESIDUAL DESDE 10-jun-08

1,62

1,65

				SERIE A		SERIE B	
8-feb-07	1	0	65.071.669	6.507.167	0	0	0
8-mar-07	1	3.983.130	65.071.669	6.507.167	3.621.027	-1.665.672.586	362.103
8-abr-07	1	0	61.450.641	6.145.064	0	0	0
8-may-07	1	0	61.450.641	6.145.064	0	0	0
8-jun-07	1	3.832.869	61.450.641	6.145.064	3.484.427	-1.282.269.022	348.443
8-jul-07	1	0	57.966.215	5.796.621	0	0	0
8-ago-07	1	0	57.966.215	5.796.621	0	0	0
8-sep-07	1	3.675.403	57.966.215	5.796.621	3.341.276	-922.192.089	334.128
8-oct-07	1	0	54.624.939	5.462.494	0	0	0
8-nov-07	1	0	54.624.939	5.462.494	0	0	0
8-dic-07	1	3.535.592	54.624.939	5.462.494	3.214.175	-594.622.323	321.417
8-ene-08	1	0	51.410.764	5.141.076	0	0	0
8-feb-08	1	0	51.410.764	5.141.076	0	0	0
8-mar-08	1	3.380.163	51.410.764	5.141.076	3.072.875	-288.850.289	307.288
8-abr-08	1	0	48.337.889	4.833.789	0	0	0
8-may-08	1	0	48.337.889	4.833.789	0	0	0
8-jun-08	1	3.250.524	48.337.889	4.833.789	2.955.021	-5.910.043	295.502
8-jul-08	1	0	45.382.868	4.538.287	0	0	0
8-ago-08	1	0	45.382.868	4.538.287	0	0	0
8-sep-08	1	2.928.907	45.382.868	4.538.287	2.662.643	239.637.871	266.264
8-oct-08	1	0	42.720.225	4.272.022	0	0	0
8-nov-08	1	0	42.720.225	4.272.022	0	0	0
8-dic-08	1	2.817.041	42.720.225	4.272.022	2.560.946	463.531.275	256.095
8-ene-09	1	0	40.159.278	4.015.928	0	0	0
8-feb-09	1	0	40.159.278	4.015.928	0	0	0
8-mar-09	1	2.607.813	40.159.278	4.015.928	2.370.739	642.470.385	237.074
8-abr-09	1	0	37.788.539	3.778.854	0	0	0
8-may-09	1	0	37.788.539	3.778.854	0	0	0
8-jun-09	1	2.508.072	37.788.539	3.778.854	2.280.066	827.663.866	228.007
8-jul-09	1	0	35.508.473	3.550.847	0	0	0
8-ago-09	1	0	35.508.473	3.550.847	0	0	0
8-sep-09	1	2.397.516	35.508.473	3.550.847	2.129.696	969.011.893	267.819
8-oct-09	1	0	33.378.777	3.283.028	0	0	0
8-nov-09	1	0	33.378.777	3.283.028	0	0	0
8-dic-09	1	2.305.030	33.378.777	3.283.028	2.305.030	1.258.546.527	0
8-ene-10	1	0	31.073.746	3.283.028	0	0	0
8-feb-10	1	0	31.073.746	3.283.028	0	0	0
8-mar-10	1	2.198.614	31.073.746	3.283.028	2.198.614	1.398.318.384	0
8-abr-10	1	0	28.875.133	3.283.028	0	0	0
8-may-10	1	0	28.875.133	3.283.028	0	0	0
8-jun-10	1	32.158.408	28.875.133	3.283.028	28.875.133	21.021.096.468	3.283.028