



## **F.T.A. UCI 6**

O CTIC'LQUG'J GTGPEKCU  
CPCN[ UV  
UCPVCPF GT'F'G'VKWVK CEKQP.'UI (HW.'UC0  
EKWF CF'I TWRQ'UCPVCPF GT  
4: 882''DQCF KNC'F GN'O QP VG  
o lj gt gpekuB i t wr quepvcpf gt @qo  
Vgr!' 56; 34: ; 5522



NAME OF THE FUND: F.T.A. UCI 6

INFORMATION AT: QUARTER/SEMESTER: T 2<sup>o</sup> / 1<sup>o</sup> ENE - CE 1<sup>o</sup> / 1<sup>o</sup> ENE YEAR: 2013

Acting on behalf of Santander de Titulización S.G.F.T., S.A. as General Manager:	Signature:

**I. DATA OF THE FUND**

Constitution Date	R 1 <sup>o</sup> / 1 <sup>o</sup> ENE	Paying Agent	ÓBÓUÁÚCEVCEÓÓÚ	
Disbursement Date	R 1 <sup>o</sup> / 1 <sup>o</sup> ENE	Negotiation Market	CECE	
Final Date of Redemption	P[ç^] à 1 <sup>o</sup> / 1 <sup>o</sup> ENE	Ratings Agencies	T U U Ö Y Ç Á Ö U U Ç E C E	
Management Company	ÚCEVCEÓÓÚÓÓÁQWSZÓÓWPÁÚBÉBÁÚÉÉ	Rating	Initial	Current
Credit Rights's Seller	WPWPÁÓÁÓÚÓÓQUÁRT UÓÓÓEÓÚÚ	CLASS A	CEB	CEH
		CLASS B	CEG	ÓEZH

## II. SECURITIES ISSUED CHARGED TO THE FUND: SECURITISATION BONDS

CLASS PRIORITY ISIN CODE	NUM BONDS	NOMINAL			
			Initial	Current	%Act/In
CLASS A ES0338558002	4.364	Nominal per Bond	100.000,00	9.516,57	
		Total Nominal	436.400.000,00	41.530.311,54	9,52 %
CLASS B ES0338558010	206	Nominal per Bond	100.000,00	22.184,43	
		Total Nominal	20.600.000,00	4.569.992,58	22,18 %

REDEMPTION AND INTEREST OF THE BONDS					
Current			Next		
Payment Date of the Current Period August 16, 2013			Next Payment Date November 18, 2013		
	Redemption of the Bonds	Gross Interest	Interest Rate	Gross Interest Next Coupon	Net Interest Next Coupon
CLASS A	317,81 €	12,52 €	0,5282 %	12,95 €	10,23 €
CLASS B	0,00 €	55,45 €	1,0149 %	57,98 €	45,80 €
Accrued amortisation due not payed	0,00 €				
Scheduled Amortisation	NO				



### III. ASSET PURCHASED BY THE FUND: CREDIT RIGHTS

CREDIT RIGHTS	ISSUE DATE	CURRENT DATE
Numbre of CR's	13.139	2.536
CR's Outstanding to be amortised	457.000.004,15	46.100.287,53
CR's Outstanding per Loan to be amortised	34.781,95	18.178,31
Interest Rate	5,00 %	1,93 %

PREPAYMENT RATE	CURRENT SITUATION
Monthly Single Rate	4,78 %
Average Monthly Single Rate	4,55 %
Constant Prepayment Rate from Constitution	12,16 %

CURRENT DELINQUENCY	Up to 1 month	From 1 to 6 months	Greater than 6 months
Debt Due (Principal + Interest)	16.336,19	10.545,30	72.176,78
Debt to be amortised	0,00	0,00	46.024.505,54
Total Debt	16.336,19	10.545,30	46.096.682,32

**F.T.A. UCI 6**

**QUARTERLY BONDS PAYOUT REPORT**

**16th, August 2013**

<b>BONDS. PRINCIPAL</b>	
Previous Balance	47.487.226,96 €
Principal Amortised	1.386.922,84 €
Outstanding Balance	46.100.304,12 €
% of Initial Balance	10,09%
Principal accrued and unpaid	0,00 €

<b>DATA</b>	
Determination Date	08/08/2013
Payment Date	08/16/2013
Last Payment Date	05/16/2013
Number of Days (Act/360)	92
Reference Interest Rate (%)	0,226%
Next Payment Date	11/18/2013

<b>INTEREST PAID</b>	
CLASS A	54.637,28 €
CLASS B	11.422,70 €
Interest accrued and unpaid	0,00 €

<b>RESIDUAL LIFE (YEARS)</b>		
	<b>INITIAL</b>	<b>08/16/2013</b>
CLASS A	6,2	0,49
CLASS B	9,8	0,50

**F.T.A. UCI 6****QUARTERLY COLLATERAL REPORT**

16th, August 2013

<b>PRINCIPAL</b>	
Previous Balance	47.487.232,88 €
Principal Amortised	1.386.945,35 €
Outstanding Balance	46.100.287,53 €
Number of Credit Rights	2.536

<b>INTEREST</b>	
Interest received during relevant period	218.252,43 €
Interest accrued during relevant period	249.788,10 €

<b>PRINCIPAL BALANCE IN ARREARS</b>					
	<b>UP to 30 DAYS</b>	<b>30 to 60 DAYS</b>	<b>60 to 90 DAYS</b>	<b>90 to 180 DAYS</b>	<b>&gt; 180 DAYS</b>
Principal Balance in Arrears	13.194,21 €	2.335,06 €	3.242,44 €	2.672,18 €	54.338,10 €
Interest accrued on Credit Rights in Arrears	3.141,98 €	348,21 €	992,02 €	955,39 €	17.838,68 €
Outstanding Balance	2.332.026,88 €	172.122,50 €	247.071,93 €	121.845,58 €	457.782,03 €
Number of Credit Rights	99	8	7	7	29
% of Outstanding Balance	5,06%	0,37%	0,54%	0,26%	0,99%

<b>TRANSITORY PROPERTIES</b>	
Last balance	0,00 €
Difference in Actual Period	0,00 €
Current balance	0,00 €
Transitory properties CR's number	0

## F.T.A. UCI 6

### QUARTERLY REPORT - ALLOCATION OF CASH

16th, August 2013

TOTAL CASH RECEIVED END OF PERIOD	1.602.124,65 €
<b>CASH RECEIVED - PRINCIPAL</b>	
Amortisation of Credit Rights	1.386.945,35 €
<b>CASH RECEIVED - INTEREST</b>	
Interest received from Credit Rights	218.252,43 €
Interest received under GIC	33,64 €
<b>INCOMES/EXPENSES OF JUDICIAL</b>	-3.106,77 €
<b>RESERVE FUNDS</b>	
<b>OTHERS</b>	

TOTAL CASH PAID END OF PERIOD	1.602.124,65 €
ORDINARY EXPENSES	3.298,23 €
MANAGEMENT FEE	10.357,50 €
INTEREST PAID TO CLASS A	54.637,28 €
INTEREST PAID TO CLASS B	11.422,70 €
REDEMPTION PAID CLASS A	1.386.922,84 €
REDEMPTION PAID CLASS B	
INTEREST SUBORDINATED LOAN SANTANDER	6.222,35 €
INTEREST SUBORDINATED LOAN UCB	6.222,35 €
ADMINISTRATION FEE	6.000,00 €
VARIABLE FEE	117.041,40 €

TREASURY ACCOUNT STATEMENT	4.570.000,04 €
<b>PRINCIPAL RESERVE FUND</b>	
Previous Balance	4.570.000,04 €
Period utilization	0,00 €
Outstanding Balance	4.570.000,04 €
<b>WITHHOLDING TAXES</b>	0,00 €
<b>ISSUE EXPENSES WITHHELD</b>	0,00 €
<b>OTHERS</b>	0,00 €

**F.T.A. UCI 6**

**CREDIT ENHANCEMENT AND SUBORDINATED LOAN**

**16th, August 2013**

<b>CREDIT ENHANCEMENT</b>		
<b>CONCEPTS</b>	<b>INITIAL</b>	<b>16th, August 2013</b>
SUBORDINATED ISSUE	95,49 %	9,91%
PRINCIPAL RESERVE FUND	9.597.000,00 € 2,10%	4.570.000,04 € 9,91%

<b>SUBORDINATED LOANS</b>		
<b>CONCEPTS</b>	<b>INITIAL</b>	<b>16th, August 2013</b>
<b>SUBORDINATED LOAN A SANTANDER</b>		
Total Outstanding Subordinated Loan	5.410.010,46 €	2.285.788,65 €
Interest Rate	2,650 %	0,93%
<b>SUBORDINATED LOAN A UCB</b>		
Total Outstanding Subordinated Loan	5.410.010,46 €	2.285.788,65 €
Interest Rate	2,650 %	0,93%



## F.T.A. UCI 6

### DEFINITIONS

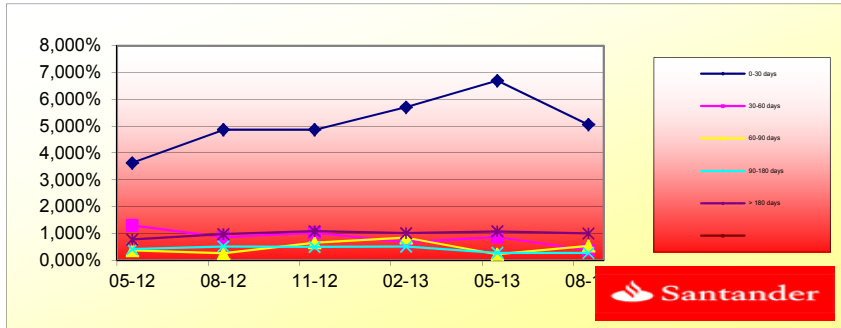
**DETERMINATION DATE** Means the date in which the Gestora will carry out the necessary calculations, on behalf of the Fund, for the distribution of the available funds at this date, according with the Order of Priority of Payments.

All the information regarding the Assets (Outstanding Balance of the Credit Rights, arrears' tables, transitory properties, stratification tables, etc.) are referred to this mentioned date.

**TRANSITORY PROPERTIES** Those assets in the balance of the Fund as a consequence of a judicial or non-judicial process.

HISTORICAL ARREARS REPORT

Data	05-12	08-12	11-12	02-13	05-13	08-13
0-30 days	3,631%	4,868%	4,865%	5,705%	6,698%	5,059%
30-60 days	1,295%	0,858%	1,017%	0,659%	0,862%	0,373%
60-90 days	0,365%	0,253%	0,655%	0,837%	0,225%	0,536%
90-180 days	0,409%	0,510%	0,495%	0,504%	0,273%	0,264%
> 180 days	0,765%	0,968%	1,080%	1,004%	1,072%	0,993%



TRIGGERS

**TRIGGERS BONDS**

1. IF 1.a) IS HIGHER THAN 1.b) THERE IS NO REDEMPTION OF CLASS B:

1.a) CR'S IN ARREARS OVER 90 DAYS	579.627,61 €
1.b) 7% CR'S OUTSTANDING BALANCE	3.227.020,13 €

THE CLASS B BONDS ARE ON THE MINIMUM LEVEL PERMITTED

**TRIGGERS RESERVE FUND**

1. IF 1.a) IS HIGHER THAN 1.b) THERE IS NO REDEMPTION OF RESERVE FUND:

1.a) CR'S IN ARREARS OVER 90 DAYS	N/A
1.b) 3% CR'S OUTSTANDING BALANCE	N/A

2. IF 2.a) IS LOWER THAN 2.b) THERE IS NO REDEMPTION OF RESERVE FUND:

2.a) WEIGHTED AVERAGE RATE CR'S	N/A
2.b) WEIGHTED AVERAGE RATE BONDS A AND B + 0,40%	N/A

3. IF 3.a) IS HIGHER THAN 3.b) THERE IS NO REDEMPTION OF RESERVE FUND:

3.a) WRITTE OFF	N/A
3.b) 0,025% INITIAL OUTSTANDING BALANCE CR'S *N/A PAYMENT DATES	N/A

THE RESERVE FUND IS ON THE MINIMUM LEVEL PERMITTED

**FONDO DE TITULIZACIÓN HIPOTECARIA  
UCI 6**

L.T.V.

LTV (%)	SALDO VIVO	%	NÚMERO	% PRESTAMOS
LTV (%)	OUTS. BALANC	% OUTSTANDING	LOANS	% LOANS
<b>0,00-9,99</b>	867.195,93	2,1180%	176	11,4137%
<b>10,00 - 19,99</b>	3.207.249,23	7,8331%	203	13,1647%
<b>20,00 - 29,99</b>	7.896.196,07	19,2850%	332	21,5305%
<b>30,00 - 39,99</b>	9.331.835,99	22,7913%	291	18,8716%
<b>40,00 - 49,99</b>	10.594.131,30	25,8743%	303	19,6498%
<b>50,00 - 59,99</b>	8.588.844,64	20,9767%	227	14,7211%
<b>60,00 - 69,99</b>	459.210,86	1,1215%	10	0,6485%

**F.T.A.: UCI 6**

**Counterpart**

Agreement	Counterpart	Rating Agency	Minimum rating	Current rating
Treasury account	Banco Santander S.A.	Moody's	S/T: P-1	P-2

COUNTERPARTY DOES NOT HAVE THE MINIMUM RATING REQUIRED. TREASURY ACCOUNT HAS BEEN TRANSFERRED TO A COUNTERPARTY WITH MINIMUM RATING REQUIRED.

**UCI 6**

Date	Real Outstanding	1,07%	Remaining at the end of the month	Average Single monthly mortality	CPR	Monthly Single monthly mortality	CPR	
		Prepayment vector						
							4,55%	
julio-00	456.040.916,0	453.128.783,7	98,93%	99,36%	0,64%	7,40%	0,64%	7,40%
agosto-00	455.077.826,1	448.828.507,4	97,86%	98,63%	0,69%	7,96%	0,74%	8,52%
septiembre-00	454.110.683,2	445.856.137,4	96,81%	98,18%	0,61%	7,08%	0,45%	5,28%
octubre-00	453.139.470,2	443.087.649,1	95,77%	97,78%	0,56%	6,51%	0,41%	4,79%
noviembre-00	452.164.170,0	439.171.130,0	94,74%	97,13%	0,58%	6,76%	0,67%	7,75%
diciembre-00	451.184.765,4	436.191.628,6	93,72%	96,68%	0,56%	6,54%	0,46%	5,41%
enero-01	450.201.239,2	431.891.179,4	92,71%	95,93%	0,59%	6,87%	0,77%	8,85%
febrero-01	449.213.573,9	428.312.545,1	91,72%	95,35%	0,59%	6,90%	0,61%	7,09%
marzo-01	448.221.752,3	423.886.429,0	90,73%	94,57%	0,62%	7,17%	0,81%	9,35%
abril-01	447.225.756,7	418.072.840,2	89,76%	93,48%	0,67%	7,77%	1,15%	12,98%
mayo-01	446.225.569,6	414.462.703,6	88,79%	92,88%	0,67%	7,74%	0,64%	7,43%
junio-01	445.221.173,5	410.239.612,2	87,84%	92,14%	0,68%	7,86%	0,80%	9,14%
julio-01	444.212.550,4	405.614.216,5	86,89%	91,31%	0,70%	8,05%	0,90%	10,31%
agosto-01	443.199.682,8	400.238.316,5	85,96%	90,31%	0,73%	8,37%	1,10%	12,43%
septiembre-01	442.182.552,7	395.859.610,6	85,04%	89,52%	0,74%	8,47%	0,87%	9,92%
octubre-01	441.161.142,1	391.241.620,9	84,12%	88,68%	0,75%	8,61%	0,94%	10,69%
noviembre-01	440.135.433,2	385.838.182,2	83,22%	87,66%	0,77%	8,88%	1,15%	12,97%
diciembre-01	439.105.407,7	380.748.736,1	82,32%	86,71%	0,79%	9,07%	1,09%	12,30%
enero-02	438.071.047,5	375.271.007,5	81,44%	85,66%	0,81%	9,31%	1,21%	13,55%
febrero-02	437.032.334,3	370.042.745,41	80,56%	84,67%	0,83%	9,50%	1,16%	13,05%
marzo-02	435.989.249,9	364.551.475,1	79,70%	83,61%	0,85%	9,72%	1,25%	13,99%
abril-02	434.941.775,9	359.297.389,6	78,84%	82,61%	0,86%	9,90%	1,20%	13,53%
mayo-02	433.889.893,8	353.940.719,2	77,99%	81,57%	0,88%	10,08%	1,25%	14,03%
junio-02	432.833.585,0	347.793.248,4	77,15%	80,35%	0,91%	10,36%	1,50%	16,56%
julio-02	431.774.155,1	342.309.563,3	76,32%	79,28%	0,92%	10,55%	1,34%	14,90%
agosto-02	430.710.266,9	336.877.719,2	75,50%	78,21%	0,94%	10,72%	1,34%	14,98%
septiembre-02	429.641.901,5	332.638.740,1	74,69%	77,42%	0,94%	10,75%	1,01%	11,50%
octubre-02	428.569.040,0	328.113.486,4	73,89%	76,56%	0,95%	10,82%	1,11%	12,57%
noviembre-02	427.491.663,6	324.171.387,7	73,10%	75,83%	0,95%	10,82%	0,95%	10,85%
diciembre-02	426.409.753,2	318.147.224,8	72,31%	74,61%	0,97%	11,06%	1,61%	17,69%
enero-03	425.324.271,8	313.840.105,4	71,53%	73,79%	0,98%	11,10%	1,10%	12,45%

Date	Real Outstanding	1,07%	Remaining at the end of the month	Average Single monthly mortality	CPR	Monthly Single monthly mortality	CPR	
		Prepayment vector						
							4,55%	
febrero-03	424.234.222,3	308.434.679,1	70,76%	72,70%	0,99%	11,27%	1,47%	16,28%
marzo-03	423.139.585,5	302.052.495,6	70,00%	71,38%	1,02%	11,54%	1,82%	19,74%
abril-03	422.040.342,2	296.379.448,4	69,25%	70,23%	1,03%	11,73%	1,62%	17,82%
mayo-03	420.936.472,8	290.615.261,4	68,51%	69,04%	1,05%	11,93%	1,69%	18,47%
junio-03	419.827.958,0	284.645.570,9	67,77%	67,80%	1,07%	12,15%	1,80%	19,54%
julio-03	418.717.512,0	276.839.156,1	67,04%	66,12%	1,11%	12,56%	2,48%	26,06%
agosto-03	417.602.392,7	267.980.363,8	66,32%	64,17%	1,16%	13,07%	2,94%	30,11%
septiembre-03	416.482.580,7	261.911.338,7	65,61%	62,89%	1,18%	13,30%	2,00%	21,55%
octubre-03	415.358.056,2	254.035.675,0	64,90%	61,16%	1,22%	13,71%	2,74%	28,39%
noviembre-03	414.228.799,2	246.480.453,8	64,20%	59,50%	1,26%	14,10%	2,71%	28,08%
diciembre-03	413.094.790,0	239.591.881,9	63,51%	58,00%	1,29%	14,41%	2,53%	26,45%
enero-04	411.956.645,0	232.532.574,9	62,83%	56,45%	1,32%	14,75%	2,68%	27,80%
febrero-04	410.813.710,2	227.850.234,3	62,16%	55,46%	1,33%	14,85%	1,74%	19,00%
marzo-04	409.665.965,6	222.469.311,6	61,49%	54,31%	1,35%	15,03%	2,09%	22,37%
abril-04	408.513.391,0	217.788.596,9	60,83%	53,31%	1,36%	15,13%	1,83%	19,86%
mayo-04	407.355.965,9	211.304.679,0	60,17%	51,87%	1,39%	15,43%	2,70%	28,01%
junio-04	406.193.669,9	206.609.961,4	59,53%	50,86%	1,40%	15,55%	1,94%	20,97%
julio-04	405.030.380,6	201.387.274,7	58,89%	49,72%	1,42%	15,73%	2,25%	23,88%
agosto-04	403.862.195,8	196.432.862,3	58,25%	48,64%	1,43%	15,88%	2,18%	23,22%
septiembre-04	402.689.094,9	193.264.517,0	57,63%	47,99%	1,43%	15,86%	1,33%	14,80%

Date	Real Outstanding	1,07%	Remaining at the end of the month	Average Single monthly mortality	CPR	Monthly Single monthly mortality	CPR	
		Prepayment vector						
							4,55%	
octubre-04	401.511.057,2	189.723.138,8	57,01%	47,25%	1,43%	15,89%	1,54%	17,04%
noviembre-04	400.328.061,9	186.369.970,8	56,40%	46,55%	1,43%	15,90%	1,48%	16,35%
diciembre-04	399.140.088,2	182.504.224,3	55,79%	45,72%	1,44%	15,96%	1,78%	19,42%
enero-05	397.949.157,2	178.392.645,5	55,19%	44,83%	1,45%	16,06%	1,96%	21,15%
febrero-05	396.753.214,3	174.837.087,6	54,60%	44,07%	1,45%	16,10%	1,70%	18,57%
marzo-05	395.552.238,6	171.903.827,8	54,01%	43,46%	1,45%	16,09%	1,38%	15,35%
abril-05	394.346.208,7	168.239.247,0	53,43%	42,66%	1,46%	16,16%	1,83%	19,90%
mayo-05	393.135.103,5	164.202.790,5	52,85%	41,77%	1,47%	16,27%	2,10%	22,47%
junio-05	391.918.901,5	160.739.959,7	52,29%	41,01%	1,47%	16,33%	1,81%	19,63%
julio-05	390.701.860,8	156.628.073,3	51,72%	40,09%	1,49%	16,46%	2,25%	23,94%
agosto-05	389.479.698,4	152.963.373,2	51,17%	39,27%	1,50%	16,55%	2,03%	21,85%
septiembre-05	388.252.392,8	150.814.394,0	50,62%	38,84%	1,49%	16,48%	1,09%	12,36%
octubre-05	387.019.922,2	147.200.821,1	50,07%	38,03%	1,50%	16,58%	2,09%	22,34%
noviembre-05	385.782.265,0	144.039.594,3	49,54%	37,34%	1,50%	16,63%	1,83%	19,91%
diciembre-05	384.539.399,3	141.159.654,6	49,00%	36,71%	1,51%	16,66%	1,68%	18,42%
enero-06	383.297.061,2	138.445.593,2	48,48%	36,12%	1,51%	16,67%	1,60%	17,65%
febrero-06	382.049.494,9	135.044.659,8	47,96%	35,35%	1,52%	16,77%	2,14%	22,84%
marzo-06	380.796.678,4	132.300.064,1	47,44%	34,74%	1,52%	16,79%	1,71%	18,70%
abril-06	379.538.589,7	129.075.221,0	46,93%	34,01%	1,53%	16,88%	2,11%	22,62%
mayo-06	378.275.206,6	126.639.279,5	46,43%	33,48%	1,53%	16,89%	1,56%	17,19%
junio-06	377.006.506,7	124.003.623,7	45,93%	32,89%	1,53%	16,92%	1,75%	19,11%
julio-06	375.739.564,1	120.891.562,8	45,43%	32,17%	1,54%	17,01%	2,18%	23,25%
agosto-06	374.467.289,9	118.426.272,7	44,95%	31,63%	1,54%	17,03%	1,71%	18,66%
septiembre-06	373.189.661,5	116.764.763,8	44,46%	31,29%	1,54%	16,97%	1,07%	12,06%
octubre-06	371.906.656,4	114.821.542,6	43,98%	30,87%	1,53%	16,94%	1,32%	14,79%
noviembre-06	370.618.252,0	112.351.017,3	43,51%	30,31%	1,54%	16,97%	1,81%	19,70%
diciembre-06	369.324.425,6	109.914.875,8	43,04%	29,76%	1,54%	17,01%	1,83%	19,84%
enero-07	368.030.272,9	107.970.795,4	42,58%	29,34%	1,54%	17,00%	1,42%	15,80%
febrero-07	366.730.674,0	106.255.615,9	42,12%	28,97%	1,54%	16,96%	1,24%	13,90%
marzo-07	365.425.606,0	105.031.432,5	41,67%	28,74%	1,53%	16,87%	0,80%	9,18%
abril-07	364.115.045,8	103.282.607,4	41,22%	28,37%	1,52%	16,84%	1,31%	14,65%
mayo-07	362.798.970,3	101.544.012,5	40,78%	27,99%	1,52%	16,81%	1,33%	14,81%
junio-07	361.477.356,4	100.393.799,9	40,34%	27,77%	1,51%	16,72%	0,77%	8,87%
julio-07	360.160.610,4	98.783.980,9	39,91%	27,43%	1,51%	16,69%	1,24%	13,95%
agosto-07	358.838.323,2	97.421.136,6	39,48%	27,15%	1,50%	16,63%	1,02%	11,54%
septiembre-07	357.510.471,3	96.000.767,8	39,05%	26,85%	1,50%	16,59%	1,09%	12,34%
octubre-07	356.177.031,4	94.815.177,8	38,63%	26,62%	1,49%	16,51%	0,87%	9,90%
noviembre-07	354.837.980,0	93.668.706,7	38,22%	26,40%	1,49%	16,44%	0,84%	9,59%
diciembre-07	353.493.293,3	92.475.277,8	37,81%	26,16%	1,48%	16,37%	0,90%	10,27%
enero-08	352.150.345,0	91.072.415,0	37,40%	25,86%	1,48%	16,33%	1,14%	12,87%



Date	Real Outstanding		1,07%	Remaining at the end of the month	Average Single monthly mortality	CPR	Monthly Single monthly mortality	CPR
			Prepayment vector					
								4,55%
febrero-08	350.801.745,0	90.178.994,2	37,00%	25,71%	1,47%	16,24%	0,60%	6,97%
marzo-08	349.447.469,8	88.957.504,4	36,60%	25,46%	1,46%	16,18%	0,97%	11,06%
abril-08	348.087.495,2	87.358.089,4	36,21%	25,10%	1,46%	16,18%	1,41%	15,71%
mayo-08	346.721.797,5	85.556.925,8	35,82%	24,68%	1,46%	16,20%	1,68%	18,36%
junio-08	345.350.352,4	84.237.854,7	35,43%	24,39%	1,46%	16,17%	1,15%	12,97%
julio-08	343.982.411,4	83.150.819,9	35,05%	24,17%	1,45%	16,11%	0,90%	10,26%
agosto-08	342.608.713,7	82.088.148,7	34,68%	23,96%	1,45%	16,05%	0,88%	10,09%
septiembre-08	341.229.234,9	81.307.334,0	34,30%	23,83%	1,44%	15,96%	0,55%	6,41%
octubre-08	339.843.950,8	80.607.800,6	33,94%	23,72%	1,43%	15,86%	0,46%	5,34%
noviembre-08	338.452.837,1	79.913.268,5	33,57%	23,61%	1,42%	15,76%	0,45%	5,32%
diciembre-08	337.055.869,0	79.110.607,2	33,21%	23,47%	1,41%	15,68%	0,59%	6,90%
enero-09	335.667.288,9	78.397.347,6	32,85%	23,36%	1,40%	15,59%	0,49%	5,74%
febrero-09	334.272.865,3	77.963.628,1	32,50%	23,32%	1,39%	15,46%	0,14%	1,65%
marzo-09	332.872.573,4	77.088.351,3	32,15%	23,16%	1,38%	15,40%	0,71%	8,16%
abril-09	331.466.388,7	76.151.863,4	31,80%	22,97%	1,38%	15,34%	0,80%	9,14%
mayo-09	330.054.286,3	75.640.093,4	31,46%	22,92%	1,37%	15,23%	0,25%	2,92%
junio-09	328.636.241,2	74.782.635,8	31,12%	22,76%	1,36%	15,17%	0,71%	8,16%
julio-09	327.233.118,9	74.079.720,5	30,79%	22,64%	1,35%	15,09%	0,52%	6,01%
agosto-09	325.824.091,8	73.119.413,8	30,46%	22,44%	1,35%	15,04%	0,87%	9,95%
septiembre-09	324.409.135,0	72.373.766,9	30,13%	22,31%	1,34%	14,97%	0,59%	6,83%
octubre-09	322.988.223,6	71.540.102,4	29,81%	22,15%	1,34%	14,91%	0,72%	8,27%
noviembre-09	321.561.332,5	70.843.524,9	29,49%	22,03%	1,33%	14,84%	0,53%	6,23%
diciembre-09	320.128.436,6	70.075.071,7	29,17%	21,89%	1,32%	14,78%	0,64%	7,44%
enero-10	318.700.982,4	69.407.998,1	28,86%	21,78%	1,32%	14,70%	0,51%	5,93%
febrero-10	317.267.521,0	68.883.690,5	28,55%	21,71%	1,31%	14,61%	0,31%	3,62%
marzo-10	315.828.027,1	68.079.926,9	28,24%	21,56%	1,30%	14,56%	0,72%	8,27%
abril-10	314.382.475,4	67.331.944,8	27,94%	21,42%	1,30%	14,50%	0,64%	7,46%
mayo-10	312.930.840,2	66.681.412,3	27,64%	21,31%	1,29%	14,44%	0,51%	5,91%
junio-10	311.473.096,1	65.850.842,7	27,34%	21,14%	1,29%	14,39%	0,78%	9,01%
julio-10	310.020.928,4	65.170.200,7	27,05%	21,02%	1,28%	14,33%	0,57%	6,63%
agosto-10	308.562.649,5	64.720.129,2	26,75%	20,97%	1,27%	14,24%	0,22%	2,62%
septiembre-10	307.098.233,7	64.222.840,5	26,47%	20,91%	1,26%	14,16%	0,30%	3,49%
octubre-10	305.627.655,1	63.659.901,9	26,18%	20,83%	1,26%	14,09%	0,40%	4,69%
noviembre-10	304.150.887,9	63.183.559,8	25,90%	20,77%	1,25%	14,00%	0,27%	3,15%
diciembre-10	302.667.905,9	62.574.931,8	25,62%	20,67%	1,24%	13,94%	0,48%	5,59%
enero-11	301.201.153,4	61.684.530,3	25,35%	20,48%	1,24%	13,91%	0,94%	10,75%
febrero-11	299.728.228,4	61.178.183,47	25,07%	20,41%	1,23%	13,84%	0,33%	3,93%
marzo-11	298.249.104,8	60.526.819,9	24,81%	20,29%	1,23%	13,79%	0,57%	6,68%
abril-11	296.763.756,6	60.037.298,6	24,54%	20,23%	1,22%	13,71%	0,31%	3,68%
mayo-11	295.272.157,5	59.570.470,7	24,27%	20,17%	1,21%	13,64%	0,28%	3,27%
junio-11	293.774.281,3	59.035.458,4	24,01%	20,10%	1,21%	13,57%	0,39%	4,61%

Date	Real Outstanding		Remaining at the end of the month		Average Single monthly mortality	CPR	Monthly Single monthly mortality	CPR
	1,07%							
	Prepayment vector							
								4,55%
julio-11	292.290.634,9	58.463.062,2	23,76%	20,00%	1,20%	13,52%	0,47%	5,46%
agosto-11	290.800.744,9	57.974.898,2	23,50%	19,94%	1,20%	13,45%	0,33%	3,85%
septiembre-11	289.304.584,9	57.499.936,9	23,25%	19,88%	1,19%	13,38%	0,31%	3,61%
octubre-11	287.802.128,6	56.961.821,9	23,00%	19,79%	1,18%	13,32%	0,42%	4,91%
noviembre-11	286.293.349,4	56.377.271,8	22,75%	19,69%	1,18%	13,27%	0,50%	5,89%
diciembre-11	284.778.220,8	55.786.401,7	22,51%	19,59%	1,17%	13,22%	0,52%	6,08%
enero-12	283.280.151,5	55.100.114,3	22,26%	19,45%	1,17%	13,18%	0,71%	8,17%
febrero-12	281.775.777,9	54.677.183,7	22,02%	19,40%	1,16%	13,11%	0,24%	2,82%
marzo-12	280.265.073,3	54.284.122,3	21,79%	19,37%	1,16%	13,04%	0,18%	2,18%
abril-12	278.748.011,2	53.747.585,9	21,55%	19,28%	1,15%	12,99%	0,45%	5,26%
mayo-12	277.224.564,7	53.349.080,2	21,32%	19,24%	1,15%	12,92%	0,20%	2,33%
junio-12	275.694.707,1	52.790.130,2	21,09%	19,15%	1,14%	12,87%	0,50%	5,82%
julio-12	274.190.230,1	52.297.273,1	20,87%	19,07%	1,14%	12,81%	0,39%	4,58%
agosto-12	272.679.421,7	51.801.946,8	20,64%	19,00%	1,13%	12,76%	0,40%	4,68%
septiembre-12	271.162.255,4	51.328.311,8	20,42%	18,93%	1,13%	12,70%	0,36%	4,23%
octubre-12	269.638.704,2	50.833.065,7	20,20%	18,85%	1,12%	12,65%	0,41%	4,76%
noviembre-12	268.108.741,5	50.318.615,1	19,98%	18,77%	1,12%	12,61%	0,45%	5,24%
diciembre-12	266.572.340,2	49.798.821,6	19,77%	18,68%	1,11%	12,56%	0,46%	5,41%
enero-13	265.051.533,3	49.234.420,4	19,56%	18,58%	1,11%	12,52%	0,57%	6,59%
febrero-13	263.524.326,2	48.797.974,1	19,35%	18,52%	1,10%	12,47%	0,31%	3,68%
marzo-13	261.990.692,2	48.327.204,1	19,14%	18,45%	1,10%	12,42%	0,39%	4,52%
abril-13	260.450.604,2	47.903.838,1	18,93%	18,39%	1,09%	12,36%	0,29%	3,42%
mayo-13	258.904.034,9	47.487.232,9	18,73%	18,34%	1,09%	12,30%	0,28%	3,28%
junio-13	257.350.957,2	46.965.860,9	18,53%	18,25%	1,08%	12,26%	0,50%	5,85%
julio-13	255.807.272,4	46.570.982,4	18,33%	18,21%	1,08%	12,21%	0,24%	2,87%
agosto-13	254.257.091,4	46.100.287,5	18,13%	18,13%	1,07%	12,16%	0,41%	4,78%

## UCI 6

DEAL 457.000.000  
 MEZZ. DECLINN 8,80%  
 MEZZ. STOPS DECLINN 1,00%  
 VIDA RESIDUAL DESDE 09/08/2013

FECHA	PRINCIPAL AVAILABLE	SENIOR NOTES	MEZZANIE NOTES	SERIE A PRINCIPAL	0,49	SERIE B PRINCIPAL	0,50
					VIDA MEDIA		VIDA MEDIA
08/07/2000		436.400.000,00	20.600.000,00				
08/08/2000	1	0	436.400.000,00	20.600.000,00	0	0	0
08/09/2000	1	0	436.400.000,00	20.600.000,00	0	0	0
08/10/2000	1	0	436.400.000,00	20.600.000,00	0	0	0
08/11/2000	1	28.620.427	436.400.000,00	20.600.000,00	28.620.427	-133.285.327.588	0
08/12/2000	1	0	407.779.573,20	20.600.000,00	0	0	0
08/01/2001	1	0	407.779.573,20	20.600.000,00	0	0	0
08/02/2001	1	16.372.144	407.779.573,20	20.600.000,00	16.372.144	-74.738.839.114	0
09/03/2001	1	0	391.407.428,82	20.600.000,00	0	0	0
09/04/2001	1	0	391.407.428,82	20.600.000,00	0	0	0
09/05/2001	1	15.796.732	391.407.428,82	20.600.000,00	15.796.732	-70.690.377.595	0
09/06/2001	1	0	375.610.696,40	20.600.000,00	0	0	0
09/07/2001	1	0	375.610.696,40	20.600.000,00	0	0	0
09/08/2001	1	15.240.720	375.610.696,40	20.600.000,00	15.240.720	-66.800.073.572	0
09/09/2001	1	0	360.369.976,90	20.600.000,00	0	0	0
09/10/2001	1	0	360.369.976,90	20.600.000,00	0	0	0
09/11/2001	1	14.703.466	360.369.976,90	20.600.000,00	14.703.466	-63.092.573.875	0
09/12/2001	1	0	345.666.510,60	20.600.000,00	0	0	0
09/01/2002	1	0	345.666.510,60	20.600.000,00	0	0	0
09/02/2002	1	14.184.354	345.666.510,60	20.600.000,00	14.184.354	-59.560.103.641	0
09/03/2002	1	0	331.482.156,32	20.600.000,00	0	0	0
09/04/2002	1	0	331.482.156,32	20.600.000,00	0	0	0
09/05/2002	1	13.682.785	331.482.156,32	20.600.000,00	13.682.785	-56.236.246.634	0
09/06/2002	1	0	317.799.371,25	20.600.000,00	0	0	0
09/07/2002	1	0	317.799.371,25	20.600.000,00	0	0	0
09/08/2002	1	13.196.176	317.799.371,25	20.600.000,00	13.196.176	-53.022.233.984	0
09/09/2002	1	0	304.603.195,54	20.600.000,00	0	0	0
09/10/2002	1	0	304.603.195,54	20.600.000,00	0	0	0
09/11/2002	1	12.727.101	304.603.195,54	20.600.000,00	12.727.101	-49.966.599.523	0
09/12/2002	1	0	291.876.094,29	20.600.000,00	0	0	0
09/01/2003	1	0	291.876.094,29	20.600.000,00	0	0	0
09/02/2003	1	12.273.518	291.876.094,29	20.600.000,00	12.273.518	-47.056.669.594	0
09/03/2003	1	0	279.602.575,87	20.600.000,00	0	0	0
09/04/2003	1	0	279.602.575,87	20.600.000,00	0	0	0
09/05/2003	1	11.836.054	279.602.575,87	20.600.000,00	11.836.054	-44.326.020.529	0
09/06/2003	1	0	267.766.522,33	20.600.000,00	0	0	0
09/07/2003	1	0	267.766.522,33	20.600.000,00	0	0	0
09/08/2003	1	11.410.491	267.766.522,33	20.600.000,00	11.410.491	-41.682.522.054	0
09/09/2003	1	0	256.356.031,76	20.600.000,00	0	0	0
09/10/2003	1	0	256.356.031,76	20.600.000,00	0	0	0
09/11/2003	1	11.001.309	256.356.031,76	20.600.000,00	11.001.309	-39.175.661.319	0
09/12/2003	1	0	245.354.722,77	20.600.000,00	0	0	0
09/01/2004	1	0	245.354.722,77	20.600.000,00	0	0	0
09/02/2004	1	10.607.045	245.354.722,77	20.600.000,00	10.607.045	-36.795.837.685	0
08/03/2004	1	0	234.747.678,18	20.600.000,00	0	0	0
08/04/2004	1	0	234.747.678,18	20.600.000,00	0	0	0
08/05/2004	1	10.226.614	234.747.678,18	20.600.000,00	9.452.583	-31.949.730.041	774.032
08/06/2004	1	0	225.295.095,32	19.825.968,39	0	0	-2.616.226.847
08/07/2004	1	0	225.295.095,32	19.825.968,39	0	0	0
08/08/2004	1	9.854.981	225.295.095,32	19.825.968,39	9.057.887	-29.782.332.796	797.094
08/09/2004	1	0	216.237.208,22	19.028.874,32	0	0	-2.620.845.286
08/10/2004	1	0	216.237.208,22	19.028.874,32	0	0	0
08/11/2004	1	9.498.429	216.237.208,22	19.028.874,32	8.730.173	-27.901.633.959	768.255

FECHA		PRINCIPAL AVAILABLE	SENIOR NOTES	MEZZANIE NOTES	SERIE A PRINCIPAL	VIDA MEDIA	SERIE B PRINCIPAL	VIDA MEDIA
08/12/2004	1	0	207.507.034,89	18.260.619,07	0	0	0	0
08/01/2005	1	0	207.507.034,89	18.260.619,07	0	0	0	0
08/02/2005	1	9.154.060	207.507.034,89	18.260.619,07	8.413.658	-26.115.995.864	740.402	-2.298.207.636
09/03/2005	1	0	199.093.376,43	17.520.217,13	0	0	0	0
09/04/2005	1	0	199.093.376,43	17.520.217,13	0	0	0	0
09/05/2005	1	8.822.636	199.093.376,43	17.520.217,13	8.109.040	-24.440.647.484	713.596	-2.150.776.979
09/06/2005	1	0	190.984.336,12	16.806.621,58	0	0	0	0
09/07/2005	1	0	190.984.336,12	16.806.621,58	0	0	0	0
09/08/2005	1	8.499.257	190.984.336,12	16.806.621,58	7.811.817	-22.826.130.191	687.440	-2.008.699.457
09/09/2005	1	0	183.172.518,81	16.119.181,66	0	0	0	0
09/10/2005	1	0	183.172.518,81	16.119.181,66	0	0	0	0
09/11/2005	1	8.189.269	183.172.518,81	16.119.181,66	7.526.901	-21.301.130.849	662.367	-1.874.499.515
09/12/2005	1	0	175.645.617,45	15.456.814,34	0	0	0	0
09/01/2006	1	0	175.645.617,45	15.456.814,34	0	0	0	0
09/02/2006	1	7.886.535	175.645.617,45	15.456.814,34	7.248.654	-19.846.813.984	637.882	-1.746.519.631
09/03/2006	1	0	168.396.963,69	14.818.932,80	0	0	0	0
09/04/2006	1	0	168.396.963,69	14.818.932,80	0	0	0	0
09/05/2006	1	7.597.112	168.396.963,69	14.818.932,80	6.982.640	-18.497.013.140	614.472	-1.627.737.156
09/06/2006	1	0	161.414.323,78	14.204.460,49	0	0	0	0
09/07/2006	1	0	161.414.323,78	14.204.460,49	0	0	0	0
09/08/2006	1	7.313.968	161.414.323,78	14.204.460,49	6.722.397	-17.189.169.306	591.571	-1.512.646.899
09/09/2006	1	0	154.691.926,71	13.612.889,55	0	0	0	0
09/10/2006	1	0	154.691.926,71	13.612.889,55	0	0	0	0
09/11/2006	1	7.043.936	154.691.926,71	13.612.889,55	6.474.206	-15.958.916.785	569.730	-1.404.384.677
09/12/2006	1	0	148.217.721,12	13.043.159,46	0	0	0	0
09/01/2007	1	0	148.217.721,12	13.043.159,46	0	0	0	0
09/02/2007	1	6.782.031	148.217.721,12	13.043.159,46	6.233.484	-14.792.057.811	548.547	-1.301.701.087
09/03/2007	1	0	141.984.237,00	12.494.612,86	0	0	0	0
09/04/2007	1	0	141.984.237,00	12.494.612,86	0	0	0	0
09/05/2007	1	6.531.427	141.984.237,00	12.494.612,86	6.003.150	-13.711.194.823	528.277	-1.206.585.144
09/06/2007	1	0	135.981.086,90	11.966.335,65	0	0	0	0
09/07/2007	1	0	135.981.086,90	11.966.335,65	0	0	0	0
09/08/2007	1	6.283.343	135.981.086,90	11.966.335,65	5.775.132	-12.659.088.608	508.212	-1.113.999.798
09/09/2007	1	0	130.205.955,24	11.458.124,06	0	0	0	0
09/10/2007	1	0	130.205.955,24	11.458.124,06	0	0	0	0
09/11/2007	1	6.048.186	130.205.955,24	11.458.124,06	5.558.994	-11.673.887.812	489.191	-1.027.302.127
09/12/2007	1	0	124.646.961,04	10.968.932,57	0	0	0	0
09/01/2008	1	0	124.646.961,04	10.968.932,57	0	0	0	0
09/02/2008	1	5.819.746	124.646.961,04	10.968.932,57	5.349.031	-10.740.854.090	470.715	-945.195.160
08/03/2008	1	0	119.297.930,12	10.498.217,85	0	0	0	0
08/04/2008	1	0	119.297.930,12	10.498.217,85	0	0	0	0
08/05/2008	1	5.602.103	119.297.930,12	10.498.217,85	5.148.992	-9.880.915.601	453.111	-869.520.573
08/06/2008	1	0	114.148.938,14	10.045.106,56	0	0	0	0
08/07/2008	1	0	114.148.938,14	10.045.106,56	0	0	0	0
08/08/2008	1	5.388.257	114.148.938,14	10.045.106,56	4.952.442	-9.048.112.224	435.815	-796.233.876
08/09/2008	1	0	109.196.495,76	9.609.291,63	0	0	0	0
08/10/2008	1	0	109.196.495,76	9.609.291,63	0	0	0	0
08/11/2008	1	5.185.229	109.196.495,76	9.609.291,63	4.765.836	-8.268.724.904	419.394	-727.647.792
08/12/2008	1	0	104.430.660,09	9.189.898,09	0	0	0	0
08/01/2009	1	0	104.430.660,09	9.189.898,09	0	0	0	0
08/02/2009	1	4.983.136	104.430.660,09	9.189.898,09	4.580.089	-7.525.085.475	403.048	-662.207.522
09/03/2009	1	0	99.850.571,54	8.786.850,30	0	0	0	0
09/04/2009	1	0	99.850.571,54	8.786.850,30	0	0	0	0
09/05/2009	1	4.792.977	99.850.571,54	8.786.850,30	4.405.309	-6.841.445.531	387.667	-602.047.207
09/06/2009	1	0	95.445.262,12	8.399.183,07	0	0	0	0
09/07/2009	1	0	95.445.262,12	8.399.183,07	0	0	0	0
09/08/2009	1	4.601.269	95.445.262,12	8.399.183,07	4.229.108	-6.178.726.615	372.161	-543.727.942
09/09/2009	1	0	91.216.154,24	8.027.021,57	0	0	0	0
09/10/2009	1	0	91.216.154,24	8.027.021,57	0	0	0	0

FECHA		PRINCIPAL AVAILABLE	SENIOR NOTES	MEZZANIE NOTES	SERIE A PRINCIPAL	VIDA MEDIA	SERIE B PRINCIPAL	VIDA MEDIA
09/11/2009	1	4.422.980	91.216.154,24	8.027.021,57	4.065.239	-5.565.312.531	357.741	-489.747.503
09/12/2009	1	0	87.150.914,99	7.669.280,52	0	0	0	0
09/01/2010	1	0	87.150.914,99	7.669.280,52	0	0	0	0
09/02/2010	1	4.250.646	87.150.914,99	7.669.280,52	3.906.844	-4.989.039.195	343.802	-439.035.449
09/03/2010	1	0	83.244.071,46	7.325.478,29	0	0	0	0
09/04/2010	1	0	83.244.071,46	7.325.478,29	0	0	0	0
09/05/2010	1	4.087.788	83.244.071,46	7.325.478,29	3.757.158	-4.463.504.205	330.630	-392.788.370
09/06/2010	1	0	79.486.913,03	6.994.848,35	0	0	0	0
09/07/2010	1	0	79.486.913,03	6.994.848,35	0	0	0	0
09/08/2010	1	3.927.579	79.486.913,03	6.994.848,35	3.609.907	-3.956.458.015	317.672	-348.168.305
09/09/2010	1	0	75.877.006,09	6.677.176,54	0	0	0	0
09/10/2010	1	0	75.877.006,09	6.677.176,54	0	0	0	0
09/11/2010	1	3.776.286	75.877.006,09	6.677.176,54	3.470.851	-3.484.734.351	305.435	-306.656.623
09/12/2010	1	0	72.406.155,14	6.371.741,65	0	0	0	0
09/01/2011	1	0	72.406.155,14	6.371.741,65	0	0	0	0
09/02/2011	1	3.622.096	72.406.155,14	6.371.741,65	3.329.132	-3.036.168.724	292.964	-267.182.848
09/03/2011	1	0	69.077.022,77	6.078.778,00	0	0	0	0
09/04/2011	1	0	69.077.022,77	6.078.778,00	0	0	0	0
09/05/2011	1	3.479.279	69.077.022,77	6.078.778,00	3.197.867	-2.631.844.154	281.412	-231.602.286
09/06/2011	1	0	65.879.156,24	5.797.365,75	0	0	0	0
09/07/2011	1	0	65.879.156,24	5.797.365,75	0	0	0	0
09/08/2011	1	3.337.382	65.879.156,24	5.797.365,75	3.067.447	-2.242.303.735	269.935	-197.322.729
09/09/2011	1	0	62.811.709,27	5.527.430,42	0	0	0	0
09/10/2011	1	0	62.811.709,27	5.527.430,42	0	0	0	0
09/11/2011	1	3.205.579	62.811.709,27	5.527.430,42	2.946.305	-1.882.688.600	259.275	-165.676.597
09/12/2011	1	0	59.865.404,73	5.268.155,62	0	0	0	0
09/01/2012	1	0	59.865.404,73	5.268.155,62	0	0	0	0
09/02/2012	1	3.072.844	59.865.404,73	5.268.155,62	2.374.689	-1.298.954.687	698.156	-381.891.122
09/03/2012	1	0	57.490.716,09	4.570.000,00	0	0	0	0
08/04/2012	1	0	57.490.716,09	4.570.000,00	0	0	0	0
08/05/2012	1	2.950.248	57.490.716,09	4.570.000,00	2.950.248	-1.351.213.399	0	0
08/06/2012	1	0	54.540.468,49	4.570.000,00	0	0	0	0
08/07/2012	1	0	54.540.468,49	4.570.000,00	0	0	0	0
08/08/2012	1	2.823.920	54.540.468,49	4.570.000,00	2.823.920	-1.033.554.572	0	0
08/09/2012	1	0	51.716.548,90	4.570.000,00	0	0	0	0
08/10/2012	1	0	51.716.548,90	4.570.000,00	0	0	0	0
08/11/2012	1	2.709.005	51.716.548,90	4.570.000,00	2.709.005	-742.267.487	0	0
08/12/2012	1	0	49.007.543,47	4.570.000,00	0	0	0	0
08/01/2013	1	0	49.007.543,47	4.570.000,00	0	0	0	0
08/02/2013	1	2.596.103	49.007.543,47	4.570.000,00	2.596.103	-472.490.778	0	0
09/03/2013	1	0	46.411.440,29	4.570.000,00	0	0	0	0
09/04/2013	1	0	46.411.440,29	4.570.000,00	0	0	0	0
09/05/2013	1	2.491.709	46.411.440,29	4.570.000,00	2.491.709	-229.237.268	0	0
09/06/2013	1	0	43.919.730,86	4.570.000,00	0	0	0	0
09/07/2013	1	0	43.919.730,86	4.570.000,00	0	0	0	0
09/08/2013	1	2.389.447	43.919.730,86	4.570.000,00	2.389.447	0	0	0
09/09/2013	1	0	41.530.283,38	4.570.000,00	0	0	0	0
09/10/2013	1	0	41.530.283,38	4.570.000,00	0	0	0	0
09/11/2013	1	2.293.864	41.530.283,38	4.570.000,00	2.293.864	211.035.456	0	0
09/12/2013	1	0	39.236.419,72	4.570.000,00	0	0	0	0
09/01/2014	1	0	39.236.419,72	4.570.000,00	0	0	0	0
09/02/2014	1	43.806.424	39.236.419,72	4.570.000,00	39.236.420	7.219.501.229	4.570.000	840.880.000