



F.T.A. UCI 6

MARIA JOSE HERENCIAS PALOMINO
ANALYST
SANTANDER DE TITULIZACION, S.G.F.T, S.A.
CIUDAD GRUPO SANTANDER
28660 BOADILLA DEL MONTE
marjherencias@gruposantander.com
Tel: 912893300



NAME OF THE FUND:

F.T.A. UCI 6

INFORMATION AT:

QUARTER/SEMESTER:

November 17, 2014 - February 16, 2015

YEAR:

2015

Acting on behalf of Santander de Titulización S.G.F.T., S.A. as General Manager:	Signature:
IGNACIO ORTEGA GAVARA - GENERAL MANAGER	

I. DATA OF THE FUND

Constitution Date	June 19, 2000	Paying Agent	BANCO SANTANDER	
Disbursement Date	June 22, 2000	Negotiation Market	AIAF	
Final Date of Redemption	November 16, 2030	Ratings Agencies	MOODY'S ESPAÑA	
Management Company	SANTANDER DE TITULIZACION, S.G.F.T, S.A.	Rating	Initial	Current
Credit Rights's Seller	UNION DE CREDITOS INMOBILIARIOS	CLASS A	Aaa	Aa2
		CLASS B	A2	A2

II. SECURITIES ISSUED CHARGED TO THE FUND: SECURITISATION BONDS

CLASS PRIORITY ISIN CODE	NUM BONDS	NOMINAL			
			Initial	Current	%Act/In
CLASS A ES0338558002	4.364	Nominal per Bond	100.000,00	7.794,05	
		Total Nominal	436.400.000,00	34.013.234,20	7,79 %
CLASS B ES0338558010	206	Nominal per Bond	100.000,00	22.184,15	
		Total Nominal	20.600.000,00	4.569.934,90	22,18 %

REDEMPTION AND INTEREST OF THE BONDS					
Current			Next		
Payment Date of the Current Period February 16, 2015			Next Payment Date May 18, 2015		
	Redemption of the Bonds	Gross Interest	Interest Rate	Gross Interest Next Coupon	Net Interest Next Coupon
CLASS A	290,33 €	7,62 €	0,3478 %	6,76 €	5,41 €
CLASS B	0,00 €	47,83 €	0,8344 %	46,15 €	36,92 €
Accrued amortisation due not payed	0,00 €				
Scheduled Amortisation	NO				



III. ASSET PURCHASED BY THE FUND: CREDIT RIGHTS

CREDIT RIGHTS	ISSUE DATE	CURRENT DATE
Number of CR's	13.139	2.330
CR's Outstanding to be amortised	457.000.004,15	38.583.206,76
CR's Outstanding per Loan to be amortised	34.781,95	16.559,32
Interest Rate	5,00 %	1,81 %

PREPAYMENT RATE	CURRENT SITUATION
Monthly Single Rate	3,77 %
Average Monthly Single Rate	4,26 %
Constant Prepayment Rate from Constitution	11,37 %

CURRENT DELINQUENCY	Up to 1 month	From 1 to 6 months	Greater than 6 months
Debt Due (Principal + Interest)	3.147,96	7.956,17	82.051,31
Debt to be amortised	0,00	0,00	38.509.758,12
Total Debt	3.147,96	7.956,17	38.591.809,43

F.T.A. UCI 6**QUARTERLY BONDS PAYOUT REPORT****2015/02/16****BONDS. PRINCIPAL**

Previous Balance	39.850.227,00 €
Principal Amortised	1.267.000,12 €
Outstanding Balance	38.583.226,78 €
% of Initial Balance	8,44%
Principal accrued and unpaid	0

DATA

Determination Date	2015/02/09
Payment Date	2015/02/16
Last Payment Date	2014/11/17
Number of Days (Act/360)	91
Reference Interest Rate (%)	0,048%
Next Payment Date	2015/05/18

INTEREST PAID

CLASS A	33.253,68 €
CLASS B	9.852,98 €
Interest accrued and unpaid	0,00 €

RESIDUAL LIFE (YEARS)

	INITIAL	2015/02/16
CLASS A	6,2	0,48
CLASS B	9,8	0,48

F.T.A. UCI 6

QUARTERLY COLLATERAL REPORT

2015/02/16

PRINCIPAL

Previous Balance	39.850.220,83 €
Principal Amortised	1.267.014,07 €
Outstanding Balance	38.583.206,76 €
Number of Credit Rights	2.330
LTV	29,36%

INTEREST

Interest received during relevant period	178.238,88 €
Interest accrued during relevant period	175.648,53 €

PRINCIPAL BALANCE IN ARREARS

	UP to 30 DAYS	30 to 60 DAYS	60 to 90 DAYS	90 to 180 DAYS	> 180 DAYS
Principal Balance in Arrears	2.678,97 €	1.734,10 €	1.826,12 €	3.232,55 €	63.976,90 €
Interest accrued on Credit Rights in Arrears	468,99 €	329,76 €	324,19 €	509,45 €	18.074,41 €
Outstanding Balance	470.307,22 €	158.046,72 €	112.927,50 €	59.451,83 €	512.401,17 €
Number of Credit Rights	21	5	4	3	33
% of Outstanding Balance	1,22%	0,41%	0,29%	0,15%	1,33%

TRANSITORY PROPERTIES

Last balance	26.662,42 €
Difference in Actual Period	-12.217,89 €
Current balance	14.444,53 €
Transitory properties CR's number	2

F.T.A. UCI 6

QUARTERLY REPORT - ALLOCATION OF CASH

2015/02/16

TOTAL CASH RECEIVED END OF PERIOD	1.445.183,55 €
CASH RECEIVED - PRINCIPAL	
Amortisation of Credit Rights	1.267.014,07 €
CASH RECEIVED - INTEREST	
Interest received from Credit Rights	178.238,88 €
Interest received under GIC	-1.311,42 €
INCOMES OF JUDICIAL	2.042,02 €
OTHERS	-800,00 €

TOTAL CASH PAID END OF PERIOD	1.445.183,55 €
ORDINARY EXPENSES	4.287,03 €
MANAGEMENT FEE	10.380,00 €
INTEREST PAID TO CLASS A	33.253,68 €
INTEREST PAID TO CLASS B	9.852,98 €
REDEMPTION PAID CLASS A	1.267.000,12 €
REDEMPTION PAID CLASS B	0,00 €
INTEREST SUBORDINATED LOAN SANTANDER	4.730,02 €
INTEREST SUBORDINATED LOAN UCB	4.730,02 €
ADMINISTRATION FEE	6.000,00 €
VARIABLE FEE	104.949,71 €

TREASURY ACCOUNT STATEMENT	4.570.000,04 €
PRINCIPAL RESERVE FUND	
Previous Balance	4.570.000,04 €
Period utilization	0,00 €
Outstanding Balance	4.570.000,04 €
WITHHOLDING TAXES	0,00 €
ISSUE EXPENSES WITHHELD	0,00 €
OTHERS	0,00 €

F.T.A. UCI 6**CREDIT ENHACEMENT AND SUBORDINATED LOAN****2015/02/16**

CREDIT ENHACEMENT				
CONCEPTS	INITIAL		2015/02/16	
SUBORDINATED ISSUE	95,49 %		11,84%	
PRINCIPAL RESERVE FUND	9.597.000,00 €	2,10%	4.570.000,04 €	11,84%

SUBORDINATED LOANS		
CONCEPTS	INITIAL	2015/02/16
SUBORDINATED LOAN A SANTANDER		
Total Outstanding Subordinated Loan	5.410.010,46 €	2.285.788,65 €
Interest Rate	2,650 %	0,81%
SUBORDINATED LOAN A UCB		
Total Outstanding Subordinated Loan	5.410.010,46 €	2.285.788,65 €
Interest Rate	2,650 %	0,81%

F.T.A. UCI 6

DEFINITIONS

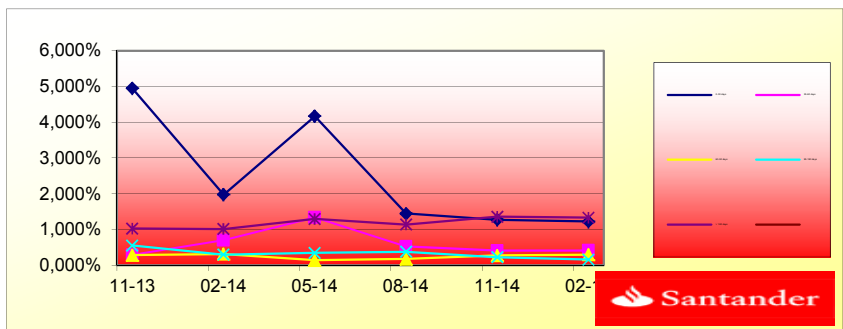
DETERMINATION DATE Means the date in which the Gestora will carry out the necessary calculations, on behalf of the Fund, for the distribution of the available funds at this date, according with the Order of Priority of Payments.
All the information regarding the Assets (Outstading Balance of the Credit Rights, arrears' tables, transitory properties, stratification tables, etc.) are refered to this mentioned date.

TRANSITORY PROPERTIES Those assets in the balance of the Fund as a consequence of a judicial or non-judicial process.

**FONDO DE TITULIZACIÓN HIPOTECARIA
UCI 6**

HISTORICAL ARREARS REPORT

Data	11-13	02-14	05-14	08-14	11-14	02-15
0-30 days	4,951%	1,977%	4,169%	1,444%	1,271%	1,219%
30-60 days	0,288%	0,698%	1,339%	0,519%	0,404%	0,410%
60-90 days	0,279%	0,311%	0,140%	0,176%	0,269%	0,293%
90-180 days	0,549%	0,294%	0,343%	0,374%	0,224%	0,154%
> 180 days	1,021%	1,011%	1,290%	1,134%	1,353%	1,328%



TRIGGERS

TRIGGERS BONDS

1. IF 1.a) IS HIGHER THAN 1.b) THERE IS NO REDEMPTION OF CLASS B:

1.a) CR'S IN ARREARS OVER 90 DAYS	571.853,00 €
1.b) 7% CR'S OUTSTANDING BALANCE	2.700.824,47 €

THE CLASS B BONDS ARE ON THE MINIMUM LEVEL PERMITTED

TRIGGERS RESERVE FUND

1. IF 1.a) IS HIGHER THAN 1.b) THERE IS NO REDEMPTION OF RESERVE FUND:

1.a) CR'S IN ARREARS OVER 90 DAYS	N/A
1.b) 3% CR'S OUTSTANDING BALANCE	N/A

2. IF 2.a) IS LOWER THAN 2.b) THERE IS NO REDEMPTION OF RESERVE FUND:

2.a) WEIGHTED AVERAGE RATE CR'S	N/A
2.b) WEIGHTED AVERAGE RATE BONDS A AND B + 0,40%	N/A

3. IF 3.a) IS HIGHER THAN 3.b) THERE IS NO REDEMPTION OF RESERVE FUND:

3.a) WRITTE OFF	N/A
3.b) 0,025% INITIAL OUTSTANDING BALANCE CR'S *N/A PAYMENT DATES	N/A

THE RESERVE FUND IS ON THE MINIMUM LEVEL PERMITTED

**FONDO DE TITULIZACIÓN HIPOTECARIA
UCI 6**

L.T.V.

LTV (%)	SALDO VIVO	%	NÚMERO	% PRESTAMOS
LTV (%)	OUTS. BALANC	% OUTSTANDING	LOANS	% LOANS
0,00-9,99	845.148,95	2,1905%	130	5,5794%
10,00 - 19,99	3.722.393,40	9,6477%	254	10,9013%
20,00 - 29,99	6.843.166,84	17,7361%	300	12,8755%
30,00 - 39,99	10.627.976,27	27,5456%	358	15,3648%
40,00 - 49,99	11.139.482,05	28,8713%	318	13,6481%
50,00 - 59,99	867.792,19	2,2491%	22	0,9442%
60,00 - 66,55	187.117,57	0,4850%	4	0,1717%

F.T.A.: UCI 6

Counterpart

Agreement	Counterpart	Rating Agency	Minimum rating	Current rating
Treasury account	Banco Santander S.A.	Moody's	S/T: P-1	P-2

COUNTERPARTY DOES NOT HAVE THE MINIMUM RATING REQUIRED. TREASURY ACCOUNT HAS BEEN TRANSFERRED TO A COUNTERPARTY WITH MINIMUM RATING REQUIRED.

UCI 6

Date	Real Outstanding	1,00%	Remaining at the end of the month	Average Single monthly mortality	CPR	Monthly Single monthly mortality	CPR	
		Prepayment vector						
							4,26%	
	457.000.004,2		100,00%	100,00%				
julio-00	456.040.916,0	453.128.783,7	99,00%	99,36%	0,64%	7,40%	0,64%	7,40%
agosto-00	455.077.826,1	448.828.507,4	98,01%	98,63%	0,69%	7,96%	0,74%	8,52%
septiembre-00	454.110.683,2	445.856.137,4	97,03%	98,18%	0,61%	7,08%	0,45%	5,28%
octubre-00	453.139.470,2	443.087.649,1	96,06%	97,78%	0,56%	6,51%	0,41%	4,79%
noviembre-00	452.164.170,0	439.171.130,0	95,09%	97,13%	0,58%	6,76%	0,67%	7,75%
diciembre-00	451.184.765,4	436.191.628,6	94,14%	96,68%	0,56%	6,54%	0,46%	5,41%
enero-01	450.201.239,2	431.891.179,4	93,20%	95,93%	0,59%	6,87%	0,77%	8,85%
febrero-01	449.213.573,9	428.312.545,1	92,27%	95,35%	0,59%	6,90%	0,61%	7,09%
marzo-01	448.221.752,3	423.886.429,0	91,34%	94,57%	0,62%	7,17%	0,81%	9,35%
abril-01	447.225.756,7	418.072.840,2	90,43%	93,48%	0,67%	7,77%	1,15%	12,98%
mayo-01	446.225.569,6	414.462.703,6	89,52%	92,88%	0,67%	7,74%	0,64%	7,43%
junio-01	445.221.173,5	410.239.612,2	88,63%	92,14%	0,68%	7,86%	0,80%	9,14%
julio-01	444.212.550,4	405.614.216,5	87,74%	91,31%	0,70%	8,05%	0,90%	10,31%
agosto-01	443.199.682,8	400.238.316,5	86,86%	90,31%	0,73%	8,37%	1,10%	12,43%
septiembre-01	442.182.552,7	395.859.610,6	85,99%	89,52%	0,74%	8,47%	0,87%	9,92%
octubre-01	441.161.142,1	391.241.620,9	85,13%	88,68%	0,75%	8,61%	0,94%	10,69%
noviembre-01	440.135.433,2	385.838.182,2	84,28%	87,66%	0,77%	8,88%	1,15%	12,97%
diciembre-01	439.105.407,7	380.748.736,1	83,43%	86,71%	0,79%	9,07%	1,09%	12,30%
enero-02	438.071.047,5	375.271.007,5	82,60%	85,66%	0,81%	9,31%	1,21%	13,55%
febrero-02	437.032.334,3	370.042.745,41	81,77%	84,67%	0,83%	9,50%	1,16%	13,05%
marzo-02	435.989.249,9	364.551.475,1	80,95%	83,61%	0,85%	9,72%	1,25%	13,99%
abril-02	434.941.775,9	359.297.389,6	80,14%	82,61%	0,86%	9,90%	1,20%	13,53%
mayo-02	433.889.893,8	353.940.719,2	79,34%	81,57%	0,88%	10,08%	1,25%	14,03%
junio-02	432.833.585,0	347.793.248,4	78,55%	80,35%	0,91%	10,36%	1,50%	16,56%
julio-02	431.774.155,1	342.309.563,3	77,76%	79,28%	0,92%	10,55%	1,34%	14,90%
agosto-02	430.710.266,9	336.877.719,2	76,98%	78,21%	0,94%	10,72%	1,34%	14,98%
septiembre-02	429.641.901,5	332.638.740,1	76,21%	77,42%	0,94%	10,75%	1,01%	11,50%
octubre-02	428.569.040,0	328.113.486,4	75,45%	76,56%	0,95%	10,82%	1,11%	12,57%
noviembre-02	427.491.663,6	324.171.387,7	74,69%	75,83%	0,95%	10,82%	0,95%	10,85%
diciembre-02	426.409.753,2	318.147.224,8	73,94%	74,61%	0,97%	11,06%	1,61%	17,69%
enero-03	425.324.271,8	313.840.105,4	73,20%	73,79%	0,98%	11,10%	1,10%	12,45%
febrero-03	424.234.222,3	308.434.679,1	72,47%	72,70%	0,99%	11,27%	1,47%	16,28%
marzo-03	423.139.585,5	302.052.495,6	71,75%	71,38%	1,02%	11,54%	1,82%	19,74%
abril-03	422.040.342,2	296.379.448,4	71,03%	70,23%	1,03%	11,73%	1,62%	17,82%
mayo-03	420.936.472,8	290.615.261,4	70,32%	69,04%	1,05%	11,93%	1,69%	18,47%
junio-03	419.827.958,0	284.645.570,9	69,61%	67,80%	1,07%	12,15%	1,80%	19,54%
julio-03	418.717.512,0	276.839.156,1	68,92%	66,12%	1,11%	12,56%	2,48%	26,06%

Date	Real Outstanding	1,00%	Remaining at the end of the month	Average Single monthly mortality	CPR	Monthly Single monthly mortality	CPR	
		Prepayment vector						
							4,26%	
agosto-03	417.602.392,7	267.980.363,8	68,23%	64,17%	1,16%	13,07%	2,94%	30,11%
septiembre-03	416.482.580,7	261.911.338,7	67,54%	62,89%	1,18%	13,30%	2,00%	21,55%
octubre-03	415.358.056,2	254.035.675,0	66,87%	61,16%	1,22%	13,71%	2,74%	28,39%
noviembre-03	414.228.799,2	246.480.453,8	66,20%	59,50%	1,26%	14,10%	2,71%	28,08%
diciembre-03	413.094.790,0	239.591.881,9	65,53%	58,00%	1,29%	14,41%	2,53%	26,45%
enero-04	411.956.645,0	232.532.574,9	64,88%	56,45%	1,32%	14,75%	2,68%	27,80%
febrero-04	410.813.710,2	227.850.234,3	64,23%	55,46%	1,33%	14,85%	1,74%	19,00%
marzo-04	409.665.965,6	222.469.311,6	63,59%	54,31%	1,35%	15,03%	2,09%	22,37%
abril-04	408.513.391,0	217.788.596,9	62,95%	53,31%	1,36%	15,13%	1,83%	19,86%
mayo-04	407.355.965,9	211.304.679,0	62,32%	51,87%	1,39%	15,43%	2,70%	28,01%
junio-04	406.193.669,9	206.609.961,4	61,69%	50,86%	1,40%	15,55%	1,94%	20,97%
julio-04	405.030.380,6	201.387.274,7	61,08%	49,72%	1,42%	15,73%	2,25%	23,88%
agosto-04	403.862.195,8	196.432.862,3	60,47%	48,64%	1,43%	15,88%	2,18%	23,22%
septiembre-04	402.689.094,9	193.264.517,0	59,86%	47,99%	1,43%	15,86%	1,33%	14,80%

Date	Real Outstanding	1,00%	Remaining at the end of the month	Average Single monthly mortality	CPR	Monthly Single monthly mortality	CPR	
		Prepayment vector						
							4,26%	
octubre-04	401.511.057,2	189.723.138,8	59,26%	47,25%	1,43%	15,89%	1,54%	17,04%
noviembre-04	400.328.061,9	186.369.970,8	58,67%	46,55%	1,43%	15,90%	1,48%	16,35%
diciembre-04	399.140.088,2	182.504.224,3	58,08%	45,72%	1,44%	15,96%	1,78%	19,42%
enero-05	397.949.157,2	178.392.645,5	57,50%	44,83%	1,45%	16,06%	1,96%	21,15%
febrero-05	396.753.214,3	174.837.087,6	56,92%	44,07%	1,45%	16,10%	1,70%	18,57%
marzo-05	395.552.238,6	171.903.827,8	56,35%	43,46%	1,45%	16,09%	1,38%	15,35%
abril-05	394.346.208,7	168.239.247,0	55,79%	42,66%	1,46%	16,16%	1,83%	19,90%
mayo-05	393.135.103,5	164.202.790,5	55,23%	41,77%	1,47%	16,27%	2,10%	22,47%
junio-05	391.918.901,5	160.739.959,7	54,68%	41,01%	1,47%	16,33%	1,81%	19,63%
julio-05	390.701.860,8	156.628.073,3	54,13%	40,09%	1,49%	16,46%	2,25%	23,94%
agosto-05	389.479.698,4	152.963.373,2	53,59%	39,27%	1,50%	16,55%	2,03%	21,85%
septiembre-05	388.252.392,8	150.814.394,0	53,05%	38,84%	1,49%	16,48%	1,09%	12,36%
octubre-05	387.019.922,2	147.200.821,1	52,52%	38,03%	1,50%	16,58%	2,09%	22,34%
noviembre-05	385.782.265,0	144.039.594,3	51,99%	37,34%	1,50%	16,63%	1,83%	19,91%
diciembre-05	384.539.399,3	141.159.654,6	51,47%	36,71%	1,51%	16,66%	1,68%	18,42%
enero-06	383.297.061,2	138.445.593,2	50,96%	36,12%	1,51%	16,67%	1,60%	17,65%
febrero-06	382.049.494,9	135.044.659,8	50,45%	35,35%	1,52%	16,77%	2,14%	22,84%
marzo-06	380.796.678,4	132.300.064,1	49,94%	34,74%	1,52%	16,79%	1,71%	18,70%
abril-06	379.538.589,7	129.075.221,0	49,44%	34,01%	1,53%	16,88%	2,11%	22,62%
mayo-06	378.275.206,6	126.639.279,5	48,95%	33,48%	1,53%	16,89%	1,56%	17,19%
junio-06	377.006.506,7	124.003.623,7	48,46%	32,89%	1,53%	16,92%	1,75%	19,11%
julio-06	375.739.564,1	120.891.562,8	47,97%	32,17%	1,54%	17,01%	2,18%	23,25%
agosto-06	374.467.289,9	118.426.272,7	47,49%	31,63%	1,54%	17,03%	1,71%	18,66%
septiembre-06	373.189.661,5	116.764.763,8	47,02%	31,29%	1,54%	16,97%	1,07%	12,06%
octubre-06	371.906.656,4	114.821.542,6	46,55%	30,87%	1,53%	16,94%	1,32%	14,79%
noviembre-06	370.618.252,0	112.351.017,3	46,08%	30,31%	1,54%	16,97%	1,81%	19,70%
diciembre-06	369.324.425,6	109.914.875,8	45,62%	29,76%	1,54%	17,01%	1,83%	19,84%
enero-07	368.030.272,9	107.970.795,4	45,16%	29,34%	1,54%	17,00%	1,42%	15,80%
febrero-07	366.730.674,0	106.255.615,9	44,71%	28,97%	1,54%	16,96%	1,24%	13,90%
marzo-07	365.425.606,0	105.031.432,5	44,26%	28,74%	1,53%	16,87%	0,80%	9,18%
abril-07	364.115.045,8	103.282.607,4	43,82%	28,37%	1,52%	16,84%	1,31%	14,65%
mayo-07	362.798.970,3	101.544.012,5	43,38%	27,99%	1,52%	16,81%	1,33%	14,81%
junio-07	361.477.356,4	100.393.799,9	42,95%	27,77%	1,51%	16,72%	0,77%	8,87%
julio-07	360.160.610,4	98.783.980,9	42,52%	27,43%	1,51%	16,69%	1,24%	13,95%
agosto-07	358.838.323,2	97.421.136,6	42,09%	27,15%	1,50%	16,63%	1,02%	11,54%
septiembre-07	357.510.471,3	96.000.767,8	41,67%	26,85%	1,50%	16,59%	1,09%	12,34%
octubre-07	356.177.031,4	94.815.177,8	41,25%	26,62%	1,49%	16,51%	0,87%	9,90%
noviembre-07	354.837.980,0	93.668.706,7	40,84%	26,40%	1,49%	16,44%	0,84%	9,59%
diciembre-07	353.493.293,3	92.475.277,8	40,43%	26,16%	1,48%	16,37%	0,90%	10,27%
enero-08	352.150.345,0	91.072.415,0	40,03%	25,86%	1,48%	16,33%	1,14%	12,87%

Date	Real Outstanding		1,00%	Remaining at the end of the month	Average Single monthly mortality	CPR	Monthly Single monthly mortality	CPR
			Prepayment vector					
								4,26%
febrero-08	350.801.745,0	90.178.994,2	39,63%	25,71%	1,47%	16,24%	0,60%	6,97%
marzo-08	349.447.469,8	88.957.504,4	39,23%	25,46%	1,46%	16,18%	0,97%	11,06%
abril-08	348.087.495,2	87.358.089,4	38,84%	25,10%	1,46%	16,18%	1,41%	15,71%
mayo-08	346.721.797,5	85.556.925,8	38,45%	24,68%	1,46%	16,20%	1,68%	18,36%
junio-08	345.350.352,4	84.237.854,7	38,06%	24,39%	1,46%	16,17%	1,15%	12,97%
julio-08	343.982.411,4	83.150.819,9	37,68%	24,17%	1,45%	16,11%	0,90%	10,26%
agosto-08	342.608.713,7	82.088.148,7	37,30%	23,96%	1,45%	16,05%	0,88%	10,09%
septiembre-08	341.229.234,9	81.307.334,0	36,93%	23,83%	1,44%	15,96%	0,55%	6,41%
octubre-08	339.843.950,8	80.607.800,6	36,56%	23,72%	1,43%	15,86%	0,46%	5,34%
noviembre-08	338.452.837,1	79.913.268,5	36,19%	23,61%	1,42%	15,76%	0,45%	5,32%
diciembre-08	337.055.869,0	79.110.607,2	35,83%	23,47%	1,41%	15,68%	0,59%	6,90%
enero-09	335.667.288,9	78.397.347,6	35,47%	23,36%	1,40%	15,59%	0,49%	5,74%
febrero-09	334.272.865,3	77.963.628,1	35,12%	23,32%	1,39%	15,46%	0,14%	1,65%
marzo-09	332.872.573,4	77.088.351,3	34,77%	23,16%	1,38%	15,40%	0,71%	8,16%
abril-09	331.466.388,7	76.151.863,4	34,42%	22,97%	1,38%	15,34%	0,80%	9,14%
mayo-09	330.054.286,3	75.640.093,4	34,07%	22,92%	1,37%	15,23%	0,25%	2,92%
junio-09	328.636.241,2	74.782.635,8	33,73%	22,76%	1,36%	15,17%	0,71%	8,16%
julio-09	327.233.118,9	74.079.720,5	33,40%	22,64%	1,35%	15,09%	0,52%	6,01%
agosto-09	325.824.091,8	73.119.413,8	33,06%	22,44%	1,35%	15,04%	0,87%	9,95%
septiembre-09	324.409.135,0	72.373.766,9	32,73%	22,31%	1,34%	14,97%	0,59%	6,83%
octubre-09	322.988.223,6	71.540.102,4	32,40%	22,15%	1,34%	14,91%	0,72%	8,27%
noviembre-09	321.561.332,5	70.843.524,9	32,08%	22,03%	1,33%	14,84%	0,53%	6,23%
diciembre-09	320.128.436,6	70.075.071,7	31,76%	21,89%	1,32%	14,78%	0,64%	7,44%
enero-10	318.700.982,4	69.407.998,1	31,44%	21,78%	1,32%	14,70%	0,51%	5,93%
febrero-10	317.267.521,0	68.883.690,5	31,12%	21,71%	1,31%	14,61%	0,31%	3,62%
marzo-10	315.828.027,1	68.079.926,9	30,81%	21,56%	1,30%	14,56%	0,72%	8,27%
abril-10	314.382.475,4	67.331.944,8	30,50%	21,42%	1,30%	14,50%	0,64%	7,46%
mayo-10	312.930.840,2	66.681.412,3	30,20%	21,31%	1,29%	14,44%	0,51%	5,91%
junio-10	311.473.096,1	65.850.842,7	29,90%	21,14%	1,29%	14,39%	0,78%	9,01%
julio-10	310.020.928,4	65.170.200,7	29,60%	21,02%	1,28%	14,33%	0,57%	6,63%
agosto-10	308.562.649,5	64.720.129,2	29,30%	20,97%	1,27%	14,24%	0,22%	2,62%
septiembre-10	307.098.233,7	64.222.840,5	29,01%	20,91%	1,26%	14,16%	0,30%	3,49%
octubre-10	305.627.655,1	63.659.901,9	28,72%	20,83%	1,26%	14,09%	0,40%	4,69%
noviembre-10	304.150.887,9	63.183.559,8	28,43%	20,77%	1,25%	14,00%	0,27%	3,15%
diciembre-10	302.667.905,9	62.574.931,8	28,14%	20,67%	1,24%	13,94%	0,48%	5,59%
enero-11	301.201.153,4	61.684.530,3	27,86%	20,48%	1,24%	13,91%	0,94%	10,75%
febrero-11	299.728.228,4	61.178.183,47	27,58%	20,41%	1,23%	13,84%	0,33%	3,93%
marzo-11	298.249.104,8	60.526.819,9	27,31%	20,29%	1,23%	13,79%	0,57%	6,68%
abril-11	296.763.756,6	60.037.298,6	27,03%	20,23%	1,22%	13,71%	0,31%	3,68%
mayo-11	295.272.157,5	59.570.470,7	26,76%	20,17%	1,21%	13,64%	0,28%	3,27%
junio-11	293.774.281,3	59.035.458,4	26,50%	20,10%	1,21%	13,57%	0,39%	4,61%

Date	Real Outstanding	1,00%	Remaining at the end of the month	Average Single monthly mortality	CPR	Monthly Single monthly mortality	CPR	
		Prepayment vector						
							4,26%	
julio-11	292.290.634,9	58.463.062,2	26,23%	20,00%	1,20%	13,52%	0,47%	5,46%
agosto-11	290.800.744,9	57.974.898,2	25,97%	19,94%	1,20%	13,45%	0,33%	3,85%
septiembre-11	289.304.584,9	57.499.936,9	25,71%	19,88%	1,19%	13,38%	0,31%	3,61%
octubre-11	287.802.128,6	56.961.821,9	25,45%	19,79%	1,18%	13,32%	0,42%	4,91%
noviembre-11	286.293.349,4	56.377.271,8	25,20%	19,69%	1,18%	13,27%	0,50%	5,89%
diciembre-11	284.778.220,8	55.786.401,7	24,94%	19,59%	1,17%	13,22%	0,52%	6,08%
enero-12	283.280.151,5	55.100.114,3	24,69%	19,45%	1,17%	13,18%	0,71%	8,17%
febrero-12	281.775.777,9	54.677.183,7	24,45%	19,40%	1,16%	13,11%	0,24%	2,82%
marzo-12	280.265.073,3	54.284.122,3	24,20%	19,37%	1,16%	13,04%	0,18%	2,18%
abril-12	278.748.011,2	53.747.585,9	23,96%	19,28%	1,15%	12,99%	0,45%	5,26%
mayo-12	277.224.564,7	53.349.080,2	23,72%	19,24%	1,15%	12,92%	0,20%	2,33%
junio-12	275.694.707,1	52.790.130,2	23,48%	19,15%	1,14%	12,87%	0,50%	5,82%
julio-12	274.190.230,1	52.297.273,1	23,25%	19,07%	1,14%	12,81%	0,39%	4,58%
agosto-12	272.679.421,7	51.801.946,8	23,01%	19,00%	1,13%	12,76%	0,40%	4,68%
septiembre-12	271.162.255,4	51.328.311,8	22,78%	18,93%	1,13%	12,70%	0,36%	4,23%
octubre-12	269.638.704,2	50.833.065,7	22,56%	18,85%	1,12%	12,65%	0,41%	4,76%
noviembre-12	268.108.741,5	50.318.615,1	22,33%	18,77%	1,12%	12,61%	0,45%	5,24%
diciembre-12	266.572.340,2	49.798.821,6	22,11%	18,68%	1,11%	12,56%	0,46%	5,41%
enero-13	265.051.533,3	49.234.420,4	21,89%	18,58%	1,11%	12,52%	0,57%	6,59%
febrero-13	263.524.326,2	48.797.974,1	21,67%	18,52%	1,10%	12,47%	0,31%	3,68%
marzo-13	261.990.692,2	48.327.204,1	21,45%	18,45%	1,10%	12,42%	0,39%	4,52%
abril-13	260.450.604,2	47.903.838,1	21,23%	18,39%	1,09%	12,36%	0,29%	3,42%
mayo-13	258.904.034,9	47.487.232,9	21,02%	18,34%	1,09%	12,30%	0,28%	3,28%
junio-13	257.350.957,2	46.965.860,9	20,81%	18,25%	1,08%	12,26%	0,50%	5,85%
julio-13	255.807.272,4	46.570.982,4	20,60%	18,21%	1,08%	12,21%	0,24%	2,87%
agosto-13	254.257.091,4	46.100.287,5	20,40%	18,13%	1,07%	12,16%	0,41%	4,78%
septiembre-13	252.700.386,6	45.651.534,8	20,19%	18,07%	1,07%	12,12%	0,36%	4,27%
octubre-13	251.137.130,8	45.269.836,5	19,99%	18,03%	1,07%	12,06%	0,22%	2,59%
noviembre-13	249.567.296,2	44.858.155,5	19,79%	17,97%	1,06%	12,01%	0,29%	3,38%
diciembre-13	247.990.855,2	44.408.974,2	19,59%	17,91%	1,06%	11,96%	0,37%	4,37%
enero-14	246.475.622,5	43.974.762,1	19,40%	17,84%	1,05%	11,92%	0,37%	4,34%
febrero-14	244.954.013,2	43.542.838,8	19,20%	17,78%	1,05%	11,87%	0,37%	4,32%
marzo-14	243.426.000,5	43.171.929,6	19,01%	17,74%	1,04%	11,82%	0,23%	2,72%
abril-14	241.891.557,4	42.752.252,7	18,82%	17,67%	1,04%	11,78%	0,34%	4,05%
mayo-14	240.350.656,8	42.364.514,9	18,63%	17,63%	1,03%	11,73%	0,27%	3,21%
junio-14	238.803.271,6	41.902.637,4	18,44%	17,55%	1,03%	11,69%	0,45%	5,26%
julio-14	237.310.144,8	41.507.441,1	18,26%	17,49%	1,03%	11,64%	0,32%	3,77%
agosto-14	235.810.734,4	41.056.771,4	18,08%	17,41%	1,02%	11,61%	0,46%	5,35%
septiembre-14	234.305.014,0	40.680.622,5	17,90%	17,36%	1,02%	11,56%	0,28%	3,30%
octubre-14	232.792.957,0	40.317.316,4	17,72%	17,32%	1,01%	11,51%	0,25%	2,95%
noviembre-14	231.274.536,8	39.850.220,8	17,54%	17,23%	1,01%	11,48%	0,51%	5,95%

Date	Real Outstanding		1,00%	Prepayment vector	Remaining at the end of the month	Average Single monthly mortality	CPR	Monthly Single monthly mortality	CPR	
diciembre-14	229.749.726,5	39.425.066,9			17,36%	17,16%	1,01%	11,45%	0,41%	4,26%
enero-15	228.238.152,7	38.965.961,0			17,19%	17,07%	1,01%	11,42%	0,51%	4,81%
febrero-15	226.720.217,6	38.583.206,8			17,02%	17,02%	1,00%	11,37%	0,32%	3,77%

UCI 6

DEAL 457.000.000
 MEZZ. DECLINN 8,80%
 MEZZ. STOPS DECLINN 1,00%
 VIDA RESIDUAL DESDE 09/02/2015

FECHA	PRINCIPAL AVAILABLE	SENIOR NOTES	MEZZANIE NOTES	SERIE A PRINCIPAL	0,48		
					VIDA MEDIA	SERIE B PRINCIPAL	VIDA MEDIA
		436.400.000,00	20.600.000,00				
08/07/2000		0 436.400.000,00	20.600.000,00	0	0	0	0
08/08/2000	1	0 436.400.000,00	20.600.000,00	0	0	0	0
08/09/2000	1	0 436.400.000,00	20.600.000,00	0	0	0	0
08/10/2000	1	0 436.400.000,00	20.600.000,00	0	0	0	0
08/11/2000	1	27.021.304 436.400.000,00	20.600.000,00	27.021.304	-140.672.906.762	0	0
08/12/2000	1	0 409.378.696,36	20.600.000,00	0	0	0	0
08/01/2001	1	0 409.378.696,36	20.600.000,00	0	0	0	0
08/02/2001	1	15.507.702 409.378.696,36	20.600.000,00	15.507.702	-79.306.390.513	0	0
09/03/2001	1	0 393.870.993,87	20.600.000,00	0	0	0	0
09/04/2001	1	0 393.870.993,87	20.600.000,00	0	0	0	0
09/05/2001	1	14.999.124 393.870.993,87	20.600.000,00	14.999.124	-75.355.598.640	0	0
09/06/2001	1	0 378.871.869,94	20.600.000,00	0	0	0	0
09/10/2001	1	0 378.871.869,94	20.600.000,00	0	0	0	0
09/08/2001	1	14.506.495 378.871.869,94	20.600.000,00	14.506.495	-71.546.034.557	0	0
09/09/2001	1	0 364.365.374,69	20.600.000,00	0	0	0	0
09/10/2001	1	0 364.365.374,69	20.600.000,00	0	0	0	0
09/11/2001	1	14.029.328 364.365.374,69	20.600.000,00	14.029.328	-67.901.946.245	0	0
09/12/2001	1	0 350.336.046,96	20.600.000,00	0	0	0	0
09/01/2002	1	0 350.336.046,96	20.600.000,00	0	0	0	0
09/02/2002	1	13.567.147 350.336.046,96	20.600.000,00	13.567.147	-64.416.816.309	0	0
09/03/2002	1	0 336.768.899,46	20.600.000,00	0	0	0	0
09/04/2002	1	0 336.768.899,46	20.600.000,00	0	0	0	0
09/05/2002	1	13.119.495 336.768.899,46	20.600.000,00	13.119.495	-61.123.726.994	0	0
09/06/2002	1	0 323.649.404,50	20.600.000,00	0	0	0	0
09/07/2002	1	0 323.649.404,50	20.600.000,00	0	0	0	0
09/08/2002	1	12.683.881 323.649.404,50	20.600.000,00	12.683.881	-57.927.285.552	0	0
09/09/2002	1	0 310.965.523,28	20.600.000,00	0	0	0	0
09/10/2002	1	0 310.965.523,28	20.600.000,00	0	0	0	0
09/11/2002	1	12.263.059 310.965.523,28	20.600.000,00	12.263.059	-54.877.191.122	0	0
09/12/2002	1	0 298.702.463,81	20.600.000,00	0	0	0	0
09/01/2003	1	0 298.702.463,81	20.600.000,00	0	0	0	0
09/02/2003	1	11.855.083 298.702.463,81	20.600.000,00	11.855.083	-51.960.829.610	0	0
09/03/2003	1	0 286.847.380,62	20.600.000,00	0	0	0	0
09/04/2003	1	0 286.847.380,62	20.600.000,00	0	0	0	0
09/05/2003	1	11.460.724 286.847.380,62	20.600.000,00	11.460.724	-49.212.346.796	0	0
09/06/2003	1	0 275.386.657,10	20.600.000,00	0	0	0	0
09/07/2003	1	0 275.386.657,10	20.600.000,00	0	0	0	0
09/08/2003	1	11.075.778 275.386.657,10	20.600.000,00	11.075.778	-46.540.419.197	0	0
09/09/2003	1	0 264.310.879,09	20.600.000,00	0	0	0	0
09/10/2003	1	0 264.310.879,09	20.600.000,00	0	0	0	0
09/11/2003	1	10.704.962 264.310.879,09	20.600.000,00	10.704.962	-43.997.393.030	0	0
09/12/2003	1	0 253.605.917,29	20.600.000,00	0	0	0	0
09/01/2004	1	0 253.605.917,29	20.600.000,00	0	0	0	0
09/02/2004	1	10.346.900 253.605.917,29	20.600.000,00	10.346.900	-41.573.846.100	0	0
08/03/2004	1	0 243.259.016,81	20.600.000,00	0	0	0	0
08/04/2004	1	0 243.259.016,81	20.600.000,00	0	0	0	0
08/05/2004	1	10.000.598 243.259.016,81	20.600.000,00	9.933.265	-39.027.796.368	67.334	-264.554.499
08/06/2004	1	0 233.325.752,28	20.532.666,20	0	0	0	0
08/07/2004	1	0 233.325.752,28	20.532.666,20	0	0	0	0
08/08/2004	1	9.660.943 233.325.752,28	20.532.666,20	8.879.543	-34.070.808.110	781.400	-2.998.231.114
08/09/2004	1	0 224.446.208,85	19.751.266,38	0	0	0	0
08/10/2004	1	0 224.446.208,85	19.751.266,38	0	0	0	0
08/11/2004	1	9.334.543 224.446.208,85	19.751.266,38	8.579.543	-32.130.387.924	755.000	-2.827.474.137

FECHA		PRINCIPAL AVAILABLE	SENIOR NOTES	MEZZANIE NOTES	SERIE A PRINCIPAL	VIDA MEDIA	SERIE B PRINCIPAL	VIDA MEDIA
08/12/2004	1	0	215.866.666,02	18.996.266,61	0	0	0	0
08/01/2005	1	0	215.866.666,02	18.996.266,61	0	0	0	0
08/02/2005	1	9.018.506	215.866.666,02	18.996.266,61	8.289.068	-30.279.965.555	729.438	-2.664.636.969
09/03/2005	1	0	207.577.597,98	18.266.828,62	0	0	0	0
09/04/2005	1	0	207.577.597,98	18.266.828,62	0	0	0	0
09/05/2005	1	8.713.730	207.577.597,98	18.266.828,62	8.008.943	-28.535.863.572	704.787	-2.511.155.994
09/06/2005	1	0	199.568.655,07	17.562.041,65	0	0	0	0
09/07/2005	1	0	199.568.655,07	17.562.041,65	0	0	0	0
09/08/2005	1	8.415.196	199.568.655,07	17.562.041,65	7.734.555	-26.846.639.678	680.641	-2.362.504.292
09/09/2005	1	0	191.834.100,28	16.881.400,82	0	0	0	0
09/10/2005	1	0	191.834.100,28	16.881.400,82	0	0	0	0
09/11/2005	1	8.128.578	191.834.100,28	16.881.400,82	7.471.120	-25.244.912.819	657.459	-2.221.552.328
09/12/2005	1	0	184.362.980,77	16.223.942,31	0	0	0	0
09/01/2006	1	0	184.362.980,77	16.223.942,31	0	0	0	0
09/02/2006	1	7.847.539	184.362.980,77	16.223.942,31	7.212.812	-23.708.512.845	634.727	-2.086.349.130
09/03/2006	1	0	177.150.168,83	15.589.214,86	0	0	0	0
09/04/2006	1	0	177.150.168,83	15.589.214,86	0	0	0	0
09/05/2006	1	7.578.523	177.150.168,83	15.589.214,86	6.965.554	-22.275.841.897	612.969	-1.960.274.087
09/06/2006	1	0	170.184.614,77	14.976.246,10	0	0	0	0
09/07/2006	1	0	170.184.614,77	14.976.246,10	0	0	0	0
09/08/2006	1	7.314.215	170.184.614,77	14.976.246,10	6.722.624	-20.880.469.321	591.591	-1.837.481.300
09/09/2006	1	0	163.461.991,03	14.384.655,21	0	0	0	0
09/10/2006	1	0	163.461.991,03	14.384.655,21	0	0	0	0
09/11/2006	1	7.061.902	163.461.991,03	14.384.655,21	6.490.719	-19.563.026.295	571.183	-1.721.546.314
09/12/2006	1	0	156.971.272,29	13.813.471,96	0	0	0	0
09/01/2007	1	0	156.971.272,29	13.813.471,96	0	0	0	0
09/02/2007	1	6.816.410	156.971.272,29	13.813.471,96	6.265.083	-18.306.571.404	551.327	-1.610.978.284
09/03/2007	1	0	150.706.189,67	13.262.144,69	0	0	0	0
09/04/2007	1	0	150.706.189,67	13.262.144,69	0	0	0	0
09/05/2007	1	6.581.184	150.706.189,67	13.262.144,69	6.048.882	-17.136.483.687	532.302	-1.508.010.564
09/06/2007	1	0	144.657.307,33	12.729.843,04	0	0	0	0
09/07/2007	1	0	144.657.307,33	12.729.843,04	0	0	0	0
09/08/2007	1	6.346.960	144.657.307,33	12.729.843,04	5.833.603	-15.989.906.857	513.357	-1.407.111.803
09/09/2007	1	0	138.823.703,95	12.216.485,95	0	0	0	0
09/10/2007	1	0	138.823.703,95	12.216.485,95	0	0	0	0
09/11/2007	1	6.124.876	138.823.703,95	12.216.485,95	5.629.482	-14.912.497.902	495.394	-1.312.299.815
09/12/2007	1	0	133.194.221,92	11.721.091,53	0	0	0	0
09/01/2008	1	0	133.194.221,92	11.721.091,53	0	0	0	0
09/02/2008	1	5.908.398	133.194.221,92	11.721.091,53	5.430.513	-13.885.822.254	477.885	-1.221.952.358
08/03/2008	1	0	127.763.708,72	11.243.206,37	0	0	0	0
08/04/2008	1	0	127.763.708,72	11.243.206,37	0	0	0	0
08/05/2008	1	5.701.963	127.763.708,72	11.243.206,37	5.240.775	-12.934.231.855	461.188	-1.138.212.403
08/06/2008	1	0	122.522.934,06	10.782.018,20	0	0	0	0
08/07/2008	1	0	122.522.934,06	10.782.018,20	0	0	0	0
08/08/2008	1	5.498.135	122.522.934,06	10.782.018,20	5.053.433	-12.006.956.237	444.702	-1.056.612.149
08/09/2008	1	0	117.469.501,30	10.337.316,11	0	0	0	0
08/10/2008	1	0	117.469.501,30	10.337.316,11	0	0	0	0
08/11/2008	1	5.304.515	117.469.501,30	10.337.316,11	4.875.473	-11.135.580.196	429.042	-979.931.057
08/12/2008	1	0	112.594.028,36	9.908.274,50	0	0	0	0
08/01/2009	1	0	112.594.028,36	9.908.274,50	0	0	0	0
08/02/2009	1	5.110.521	112.594.028,36	9.908.274,50	4.697.170	-10.296.196.105	413.351	-906.065.257
09/03/2009	1	0	107.896.858,60	9.494.923,56	0	0	0	0
09/04/2009	1	0	107.896.858,60	9.494.923,56	0	0	0	0
09/05/2009	1	4.928.067	107.896.858,60	9.494.923,56	4.529.473	-9.520.952.635	398.594	-837.843.832
09/06/2009	1	0	103.367.385,42	9.096.329,92	0	0	0	0
09/07/2009	1	0	103.367.385,42	9.096.329,92	0	0	0	0
09/08/2009	1	4.742.630	103.367.385,42	9.096.329,92	4.359.035	-8.761.660.088	383.595	-771.026.088
09/09/2009	1	0	99.008.350,55	8.712.734,85	0	0	0	0
09/10/2009	1	0	99.008.350,55	8.712.734,85	0	0	0	0

FECHA		PRINCIPAL AVAILABLE	SENIOR NOTES	MEZZANIE NOTES	SERIE A PRINCIPAL	VIDA MEDIA	SERIE B PRINCIPAL	VIDA MEDIA
09/11/2009	1	4.570.470	99.008.350,55	8.712.734,85	4.200.799	-8.057.133.084	369.670	-709.027.711
09/12/2009	1	0	94.807.551,24	8.343.064,51	0	0	0	0
09/01/2010	1	0	94.807.551,24	8.343.064,51	0	0	0	0
09/02/2010	1	4.403.573	94.807.551,24	8.343.064,51	4.047.402	-7.390.555.538	356.171	-650.368.887
09/03/2010	1	0	90.760.149,52	7.986.893,16	0	0	0	0
09/04/2010	1	0	90.760.149,52	7.986.893,16	0	0	0	0
09/05/2010	1	4.245.842	90.760.149,52	7.986.893,16	3.902.428	-6.778.517.883	343.414	-596.509.574
09/06/2010	1	0	86.857.721,26	7.643.479,47	0	0	0	0
09/07/2010	1	0	86.857.721,26	7.643.479,47	0	0	0	0
09/08/2010	1	4.089.884	86.857.721,26	7.643.479,47	3.759.085	-6.183.694.460	330.799	-544.165.113
09/09/2010	1	0	83.098.636,48	7.312.680,01	0	0	0	0
09/10/2010	1	0	83.098.636,48	7.312.680,01	0	0	0	0
09/11/2010	1	3.942.602	83.098.636,48	7.312.680,01	3.623.715	-5.627.629.011	318.887	-495.231.353
09/12/2010	1	0	79.474.921,73	6.993.793,11	0	0	0	0
09/01/2011	1	0	79.474.921,73	6.993.793,11	0	0	0	0
09/02/2011	1	3.791.081	79.474.921,73	6.993.793,11	3.484.449	-5.090.780.420	306.632	-447.988.677
09/03/2011	1	0	75.990.472,43	6.687.161,57	0	0	0	0
09/04/2011	1	0	75.990.472,43	6.687.161,57	0	0	0	0
09/05/2011	1	3.651.021	75.990.472,43	6.687.161,57	3.355.718	-4.604.045.079	295.303	-405.155.967
09/06/2011	1	0	72.634.754,45	6.391.858,39	0	0	0	0
09/07/2011	1	0	72.634.754,45	6.391.858,39	0	0	0	0
09/08/2011	1	3.510.981	72.634.754,45	6.391.858,39	3.227.004	-4.130.565.426	283.976	-363.489.757
09/09/2011	1	0	69.407.750,21	6.107.882,02	0	0	0	0
09/10/2011	1	0	69.407.750,21	6.107.882,02	0	0	0	0
09/11/2011	1	3.381.122	69.407.750,21	6.107.882,02	3.107.649	-3.691.887.340	273.473	-324.886.086
09/12/2011	1	0	66.300.100,93	5.834.408,88	0	0	0	0
09/01/2012	1	0	66.300.100,93	5.834.408,88	0	0	0	0
09/02/2012	1	3.249.304	66.300.100,93	5.834.408,88	2.986.493	-3.273.195.985	262.811	-288.041.247
08/03/2012	1	0	63.313.608,24	5.571.597,53	0	0	0	0
08/04/2012	1	0	63.313.608,24	5.571.597,53	0	0	0	0
08/05/2012	1	3.127.827	63.313.608,24	5.571.597,53	2.874.841	-2.894.965.268	252.986	-254.756.944
08/06/2012	1	0	60.438.766,87	5.318.611,48	0	0	0	0
08/07/2012	1	0	60.438.766,87	5.318.611,48	0	0	0	0
08/08/2012	1	3.001.325	60.438.766,87	5.318.611,48	2.758.571	-2.524.092.517	242.754	-222.120.142
08/09/2012	1	0	57.680.195,81	5.075.857,23	0	0	0	0
08/10/2012	1	0	57.680.195,81	5.075.857,23	0	0	0	0
08/11/2012	1	2.886.680	57.680.195,81	5.075.857,23	2.380.823	-1.959.417.352	505.857	-416.320.501
08/12/2012	1	0	55.299.372,78	4.570.000,00	0	0	0	0
08/01/2013	1	0	55.299.372,78	4.570.000,00	0	0	0	0
08/02/2013	1	2.773.473	55.299.372,78	4.570.000,00	2.773.473	-2.027.408.630	0	0
09/03/2013	1	0	52.525.899,96	4.570.000,00	0	0	0	0
09/04/2013	1	0	52.525.899,96	4.570.000,00	0	0	0	0
09/05/2013	1	2.669.011	52.525.899,96	4.570.000,00	2.669.011	-1.710.836.362	0	0
09/06/2013	1	0	49.856.888,48	4.570.000,00	0	0	0	0
09/07/2013	1	0	49.856.888,48	4.570.000,00	0	0	0	0
09/08/2013	1	2.566.205	49.856.888,48	4.570.000,00	2.566.205	-1.408.846.324	0	0
09/09/2013	1	0	47.290.683,88	4.570.000,00	0	0	0	0
09/10/2013	1	0	47.290.683,88	4.570.000,00	0	0	0	0
09/11/2013	1	2.470.196	47.290.683,88	4.570.000,00	2.470.196	-1.128.879.601	0	0
09/12/2013	1	0	44.820.487,82	4.570.000,00	0	0	0	0
09/01/2014	1	0	44.820.487,82	4.570.000,00	0	0	0	0
09/02/2014	1	2.354.456	44.820.487,82	4.570.000,00	2.354.456	-859.376.360	0	0
09/03/2014	1	0	42.466.032,04	4.570.000,00	0	0	0	0
09/04/2014	1	0	42.466.032,04	4.570.000,00	0	0	0	0
09/05/2014	1	2.256.257	42.466.032,04	4.570.000,00	2.256.257	-622.726.913	0	0
09/06/2014	1	0	40.209.775,10	4.570.000,00	0	0	0	0
09/07/2014	1	0	40.209.775,10	4.570.000,00	0	0	0	0
09/08/2014	1	2.152.199	40.209.775,10	4.570.000,00	2.152.199	-396.004.549	0	0
09/09/2014	1	0	38.057.576,47	4.570.000,00	0	0	0	0
09/10/2014	1	0	38.057.576,47	4.570.000,00	0	0	0	0
09/11/2014	1	2.063.147	38.057.576,47	4.570.000,00	2.063.147	-189.809.564	0	0
09/12/2014	1	0	35.994.429,03	4.570.000,00	0	0	0	0
09/01/2015	1	0	35.994.429,03	4.570.000,00	0	0	0	0
09/02/2015	1	1.981.226	35.994.429,03	4.570.000,00	1.981.226	0	0	0
09/03/2015	1	0	34.013.202,61	4.570.000,00	0	0	0	0
09/04/2015	1	0	34.013.202,61	4.570.000,00	0	0	0	0
09/05/2015	1	1.905.531	34.013.202,61	4.570.000,00	1.905.531	169.592.235	0	0
09/06/2015	1	0	32.107.671,87	4.570.000,00	0	0	0	0
09/07/2015	1	0	32.107.671,87	4.570.000,00	0	0	0	0
09/08/2015	1	36.677.676	32.107.671,87	4.570.000,00	32.107.672	5.811.488.609	4.570.000	827.170.000