



F.T.H. HIPOTEBANSA X

FRANCISCO FORTES CLAVERO

ANALYST

SANTANDER DE TITULIZACION, S.G.F.T, S.A.

CIUDAD GRUPO SANTANDER

28660 BOADILLA DEL MONTE

ffortes@gruposantander.com

Tel: 912893290



NAME OF THE FUND:

F.T.H. HIPOTEBANSA X

INFORMATION AT:

QUARTER/SEMESTER:

September 18, 2012 - December 18, 2012

YEAR:

2012

Acting on behalf of Santander de Titulización S.G.F.T., S.A. as General Manager:	Signature:
IGNACIO ORTEGA GAVARA - GENERAL MANAGER	

I. DATA OF THE FUND

Constitution Date	March 04, 2002	Paying Agent	BANCO SANTANDER	
Disbursement Date	March 07, 2002	Negotiation Market	AIAF	
Final Date of Redemption	March 18, 2034	Ratings Agencies	MOODY'S ESPAÑA	
			STANDARD & POORS	
Management Company	SANTANDER DE TITULIZACION, S.G.F.T, S.A.	Rating	Initial	Current
Credit Rights 's Seller	BANCO SANTANDER	CLASS A	Aaa/AAA	ÓaaF/AAĒ
		CLASS B	A2/A	Óaa2/ÓÓ+

II. SECURITIES ISSUED CHARGED TO THE FUND: SECURITISATION BONDS

CLASS PRIORITY ISIN CODE	NUM BONDS	NOMINAL			
			Initial	Current	%Act/In
CLASS A ES0338356001	8.987	Nominal per Bond	100.000,00	14.113,35	
		Total Nominal	898.700.000,00	126.836.676,45	14,11 %
CLASS B ES0338356019	183	Nominal per Bond	100.000,00	48.516,81	
		Total Nominal	18.300.000,00	8.878.576,23	48,52 %

REDEMPTION AND INTEREST OF THE BONDS					
Current			Next		
Payment Date of the Current Period December 18, 2012			Next Payment Date March 19, 2013		
	Redemption of the Bonds	Gross Interest	Interest Rate	Gross Interest Next Coupon	Net Interest Next Coupon
CLASS A	599,09 €	17,11 €	€H94 %	Fl,€ €	FF,FF €
CLASS B	2.059,45 €	102,28 €	€I H %	J€,€2 €	Ī F,FG€
Accrued amortisation due not payed	0,00 €				
Scheduled Amortisation	NO				

III. ASSET PURCHASED BY THE FUND: CREDIT RIGHTS

CREDIT RIGHTS	ISSUE DATE	CURRENT DATE
Number of CR's	14.276	4.167
CR's Outstanding to be amortised	917.000.066,55	135.715.274,76
CR's Outstanding per Loan to be amortised	64.233,68	32.569,06
Interest Rate	5,57 %	2,42 %

PREPAYMENT RATE	CURRENT SITUATION
Monthly Single Rate	8,49 %
Average Monthly Single Rate	FEI H%
Constant Prepayment Rate from Constitution	10,63 %

CURRENT DELINQUENCY	Up to 1 month	From 1 to 6 months	Greater than 6 months
Debt Due (Principal + Interest)	1.965,77	42.316,59	0,00
Debt to be amortised	0,00	0,00	135.680.362,46
Total Debt	1.965,77	42.316,59	135.680.362,46

F.T.H. HIPOTEBANSA X**QUARTERLY BONDS PAYOUT REPORT**

December 18, 2012

BONDS. PRINCIPAL	
Previous Balance	141.476.153,86 €
Principal Amortised	5.760.901,18 €
Outstanding Balance	135.715.252,68 €
% of Initial Balance	14,80 %
Principal accrued and unpaid	0,00 €

INTEREST PAID	
CLASS A	153.767,57 €
CLASS B	18.717,24 €
Interest accrued and unpaid	0,00 €

DATA	
Determination Date	December 11, 2012
Payment Date	December 18, 2012
Last Payment Date	September 18, 2012
Number of Days (Act/360)	91
Reference Interest Rate (%)	0,184 %
Next Payment Date	March 19, 2013

RESIDUAL LIFE (YEARS)		
	INITIAL	December 18, 2012
CLASS A	4,35	1,66
CLASS B	9,41	1,73

F.T.H. HIPOTEBANSA X

QUARTERLY COLLATERAL REPORT

December 18, 2012

PRINCIPAL	
Previous Balance	141.476.162,69 €
Principal Amortised	5.760.887,93 €
Outstanding Balance	135.715.274,76 €
Number of Credit Rights	4.167
LTV	27,52%

INTEREST	
Interest received during relevant period	1.015.870,38 €
Interest accrued during relevant period	1.020.692,80 €

PRINCIPAL BALANCE IN ARREARS					
	UP to 30 DAYS	30 to 60 DAYS	60 to 90 DAYS	90 to 180 DAYS	> 180 DAYS
Principal Balance in Arrears	1.487,92 €	8.921,96 €	10.746,19 €	13.756,23 €	0,00 €
Interest accrued on Credit Rights in Arrears	477,85 €	2.416,97 €	3.150,31 €	3.324,93 €	0,00 €
Outstanding Balance	361.576,19 €	664.342,53 €	511.410,97 €	387.559,37 €	856.150,00 €
Number of Credit Rights	8	16	12	7	64
% of Outstanding Balance	0,27 %	0,49 %	0,38 %	0,29 %	0,63 %

(1) This report does not include loans in arrears from 1 to 15 days, as it is considered a technical arrear with a high percentage of recovery.

F.T.H. HIPOTEBANSA X**QUARTERLY COLLATERAL REPORT**

December 18, 2012

CONTENTIOUS / JUDICIAL	
Last balance	778.367,25 €
Difference in Actual Period	77.782,75 €
Current balance	856.150,00 €
Contentious CR's number	64

TRANSITORY PROPERTIES	
Last balance	289.551,79 €
Difference in Actual Period	-28.803,83 €
Current balance	260.747,96 €
Transitory properties CR's number	6

NET LOSS	
Last balance	163.128,30 €
Difference in Actual Period	60,56 €
Current balance	163.188,86 €

F.T.H. HIPOTEBANSA X

QUARTERLY REPORT - ALLOCATION OF CASH

December 18, 2012

TOTAL CASH RECEIVED END OF PERIOD	6.856.314,10 €
CASH RECEIVED - PRINCIPAL	
Amortisation of Credit Rights	5.750.290,04 €
CASH RECEIVED - INTEREST	
Interest received from Credit Rights	1.015.870,38 €
Interest received under GIC	1.260,28 €
CONTENTIOUS	12.289,06 €
INCOMES/EXPENSES OF TRANSTORY PROPERTIES	7.473,68 €
RESERVE FUNDS	69.130,66 €
OTHERS	0,00 €

TREASURY ACCOUNT STATEMENT	3.462.583,30 €
PRINCIPAL RESERVE FUND	
Previous Balance	1.414.761,63 €
Period utilization	57.608,88 €
Outstanding Balance	1.357.152,75 €
PRINCIPAL RESERVE FUND	
Previous Balance	2.116.952,33 €
Period utilization	11.521,78 €
Outstanding Balance	2.105.430,55 €
WITHHOLDING TAXES	0,00 €
ISSUE EXPENSES WITHHELD	0,00 €
OTHERS	0,00 €

TOTAL CASH PAID END OF PERIOD	6.856.314,10 €
ORDINARY EXPENSES	894,69 €
MANAGEMENT FEE	18.885,00 €
SWAP PAYMENT CLASS A	608.957,12 €
SWAP COLLECTION CLASS A	-153.743,29 €
CLASS A INTEREST	153.767,57 €
CLASS A REDEMPTION	5.384.021,83 €
CLASS B REDEMPTION	376.879,35 €
SWAP PAYMENT CLASS B	42.627,03 €
SWAP COLLECTION CLASS B	-18.716,59 €
CLASS B INTEREST	18.717,24 €
SUBORDINATED LOAN A INTEREST	16.033,10 €
SUBORDINATED LOAN B INTEREST	0,00 €
SUBORDINATED LOAN A REDEMPTION	69.130,66 €
SUBORDINATED LOAN B REDEMPTION	0,00 €
ADMINISTRATION FEE	6.000,00 €
VARIABLE FEE	332.860,39 €

F.T.H. HIPOTEBANSA X

CREDIT ENHACEMENT AND SUBORDINATED LOAN

December 18, 2012

CREDIT ENHACEMENT		
CONCEPTS	INITIAL	December 18, 2012
SUBORDINATED ISSUE	2,00 %	6,54 %
PRINCIPAL RESERVE FUND	9.170.000,00 € (1,00 %)	1.357.152,75 € (1,00 %)
SECONDARY RESERVE FUND	3.668.000,00 € (0,40 %)	2.105.430,55 € (1,55 %)

SUBORDINATED LOANS		
CONCEPTS	INITIAL	December 18, 2012
SUBORDINATED LOAN A		
Total Outstanding Subordinated Loan	14.046.958,00 €	3.464.309,07 €
Interest Rate	4,660 %	1,82%

F.T.H. HIPOTEBANSA X

TRIGGERS OF THE MODEL

December 18, 2012

BOND's TRIGGERS	
IF 1) IS HIGHER THAN 2) CLASS B IS NOT AMORTISED	
1) CREDIT RIGHTS IN ARREARS OVER 90 DAYS	1.243.709,37 €
2) 7% CREDIT RIGHTS OUTSTANDING BALANCE	9.500.069,23 €

CLASS B IS AMORTISED

AGREEMENT	COUNTERPARTY	RATING AGENCY	MINIMUM RATING REQUIRED	CURRENT RATING
TREASSURY ACCOOUNT	BANCO SANTANDER	MOODYS S&P	P-1 s/t A l/t A-1 s/t	Baa2 l/t P-2 s/t BBB l/t A-2 s/t
SWAP	BANCO SANTANDER	MOODYS S&P	A1 l/t P-2 s/t BBB+	Baa2 l/t P-2 s/t BBB l/t A-2 s/t

COUNTERPARTY DOES NOT HAVE THE MINIMUM RATING REQUIRED. TREASURY ACCOUNT HAS BEEN TRANSFERRED TO A COUNTERPARTY WITH MINIMUM RATING REQUIRED. SWAP DEPOSIT HAS BEEN FUNDED

F.T.H. HIPOTEBANSA X

DEFINITIONS

December 18, 2012

DETERMINATION DATE Means the date in which the Gestora will carry out the necessary calculations, on behalf of the Fund, for the distribution of the available funds at this date, according with the Order of Priority of Payments.
All the information regarding the Assets (Outstading Balance of the Credit Rights, arrears' tables, transitory properties, stratiphication tables, etc.) are refered to this mentioned date.

NET LOSSES Those loans which the Originator considers that will not recover (net of recoveries).

TRANSITORY PROPERTIES Those assets in the balance of the Fund as a consequence of a judicial or non-judicial process.

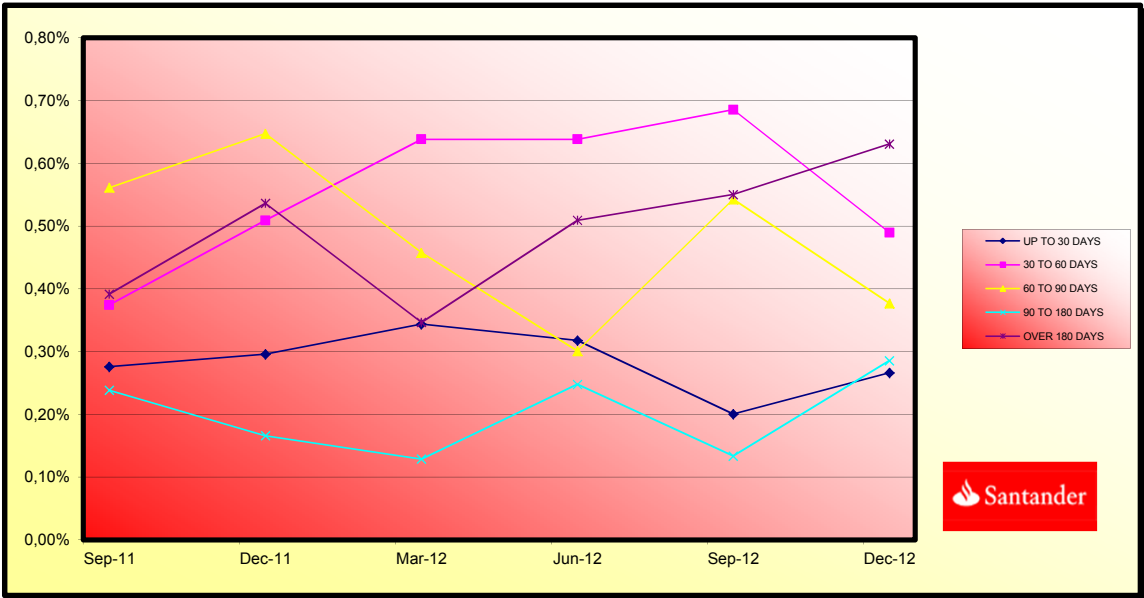
CONTENTIOUS / JUDICIAL Loans in which the Originator will take legal actions. This amount is included in the bucket > 180 days in arrears.



**FONDO DE TITULIZACIÓN DE ACTIVOS
HIPOTEBANSA X**

Report date: December 18th, 2012

ARREARS PERFORMANCE						
	12-Sep-11	12-Dec-11	12-Mar-12	11-Jun-12	11-Sep-12	11-Dec-12
UP TO 30 DAYS	0,28%	0,30%	0,34%	0,32%	0,20%	0,266%
30 TO 60 DAYS	0,37%	0,51%	0,64%	0,64%	0,69%	0,490%
60 TO 90 DAYS	0,56%	0,65%	0,46%	0,30%	0,54%	0,377%
90 TO 180 DAYS	0,24%	0,17%	0,13%	0,25%	0,13%	0,286%
OVER 180 DAYS	0,39%	0,54%	0,35%	0,51%	0,55%	0,631%





FONDO DE TITULIZACIÓN DE ACTIVOS
HIPOTEBANSA X

LTV

Report date: December 18th, 2012

LTV				
	OUTS, BALANCE	% OUTSTANDING	NUMBER LOANS	% NUM LOANS
0-9,99	11.000.662,99 €	8,10%	941	22,45%
10-19,99	13.408.396,51 €	9,87%	741	17,68%
20-29,99	19.320.877,28 €	14,22%	589	14,05%
30-39,99	28.159.819,10 €	20,73%	742	14,05%
40-49,99	30.975.289,25 €	22,80%	620	17,70%
50-59,99	24.492.779,70 €	18,03%	428	14,79%
60-69,99	7.935.112,19 €	5,84%	124	10,21%
70-79,99	348.106,51 €	0,26%	5	2,96%
>80	196.031,23 €	0,14%	2	0,05%

PREPAGOS -HIPOTEBANSA X

18-dic-12

Fecha	Balance Teórico 0,166386	Balance Real	0,93% Vector Prepago	Tasa Prepago Mensual desde Inicio	Tasa Prepago Anualizada desde Inicio 10,83%	Tasa Prepago Mensual	Tasa Prepago Mensual Anualizada
1	917.000.000,00		100,00%	100,00%			
2	1-abr-02	914.051.238,01	902.907.626,34	99,07%	98,78%	1,22%	13,69%
3	1-may-02	911.088.788,86	890.154.639,86	98,14%	97,70%	1,16%	13,02%
4	1-jun-02	908.112.589,00	880.892.526,40	97,23%	97,00%	1,01%	11,46%
5	1-jul-02	905.123.839,60	869.332.197,68	96,32%	96,05%	1,00%	11,40%
6	1-ago-02	902.121.217,43	859.491.890,58	95,42%	95,27%	0,96%	10,97%
7	1-sep-02	899.104.658,08	851.058.890,36	94,53%	94,66%	0,91%	10,40%
8	1-oct-02	896.074.096,87	841.285.243,08	93,65%	93,89%	0,90%	10,25%
9	1-nov-02	893.029.468,80	832.131.966,74	92,78%	93,18%	0,88%	10,05%
10	1-dic-02	889.970.708,59	822.023.405,27	91,91%	92,37%	0,88%	10,05%
11	1-ene-03	886.899.610,85	810.027.297,96	91,06%	91,33%	0,90%	10,31%
12	1-feb-03	883.814.258,11	801.043.118,49	90,21%	90,63%	0,89%	10,17%
13	1-mar-03	880.714.584,18	792.833.367,84	89,37%	90,02%	0,87%	9,98%
14	1-abr-03	877.600.522,61	782.569.617,37	88,53%	89,17%	0,88%	10,04%
15	1-may-03	874.472.006,59	777.414.915,92	87,71%	88,90%	0,84%	9,59%
16	1-jun-03	871.328.969,05	763.569.938,46	86,89%	87,63%	0,88%	10,02%
17	1-jul-03	868.177.587,15	753.062.767,91	86,08%	86,74%	0,89%	10,12%
18	1-ago-03	865.011.577,58	740.400.511,46	85,28%	85,59%	0,91%	10,40%
19	1-sep-03	861.830.872,46	730.693.726,24	84,48%	84,78%	0,91%	10,42%
20	1-oct-03	858.635.403,56	717.375.382,95	83,69%	83,55%	0,94%	10,73%
21	1-nov-03	855.425.102,36	702.361.237,98	82,91%	82,11%	0,98%	11,16%
22	1-dic-03	852.199.900,01	689.319.019,25	82,14%	80,89%	1,00%	11,42%
23	1-ene-04	848.973.670,82	676.926.186,29	81,37%	79,73%	1,02%	11,62%
24	1-feb-04	845.732.466,56	666.509.277,54	80,62%	78,81%	1,03%	11,68%
25	1-mar-04	842.476.217,70	657.731.166,30	79,86%	78,07%	1,03%	11,64%
26	1-abr-04	839.204.854,42	644.603.859,65	79,12%	76,81%	1,05%	11,89%
27	1-may-04	835.918.306,57	635.093.194,16	78,38%	75,98%	1,05%	11,91%
28	1-jun-04	832.616.503,65	627.050.897,34	77,65%	75,31%	1,04%	11,84%
29	1-jul-04	829.312.946,33	615.244.852,93	76,93%	74,19%	1,06%	12,01%
30	1-ago-04	825.994.055,00	604.894.935,99	76,21%	73,23%	1,07%	12,09%
31	1-sep-04	822.659.758,48	572.180.148,60	75,50%	69,55%	1,20%	13,52%
32	1-oct-04	819.309.985,26	562.399.338,00	74,79%	68,64%	1,21%	13,55%
33	1-nov-04	815.944.663,52	553.054.228,84	74,10%	67,78%	1,21%	13,57%
34	1-dic-04	812.563.721,08	543.620.997,39	73,41%	66,90%	1,21%	13,60%
35	1-ene-05	809.190.318,92	530.939.482,41	72,72%	65,61%	1,23%	13,82%
36	1-feb-05	805.801.258,56	521.505.382,83	72,04%	64,72%	1,24%	13,86%
37	1-mar-05	802.396.467,32	513.337.300,73	71,37%	63,98%	1,23%	13,83%
38	1-abr-05	798.975.872,16	505.464.441,61	70,71%	63,26%	1,23%	13,80%
39	1-may-05	795.539.399,74	494.636.640,32	70,05%	62,18%	1,24%	13,93%
40	1-jun-05	792.086.976,37	484.288.743,29	69,39%	61,14%	1,25%	14,05%
41	1-jul-05	788.648.823,17	475.111.533,01	68,75%	60,24%	1,26%	14,10%
42	1-ago-05	785.194.711,21	466.804.454,53	68,10%	59,45%	1,26%	14,12%
43	1-sep-05	781.724.566,41	461.752.924,62	67,47%	59,07%	1,25%	13,97%
44	1-oct-05	778.238.314,35	454.431.330,85	66,84%	58,39%	1,24%	13,94%
45	1-nov-05	774.735.880,28	446.092.808,14	66,22%	57,58%	1,25%	13,98%
46	1-dic-05	771.217.189,08	437.657.141,61	65,60%	56,75%	1,25%	14,02%
47	1-ene-06	767.705.836,63	427.609.446,30	64,99%	55,70%	1,26%	14,16%
48	1-feb-06	764.178.185,66	420.381.426,81	64,38%	55,01%	1,26%	14,15%
49	1-mar-06	760.634.160,51	413.595.736,60	63,78%	54,38%	1,26%	14,13%
50	1-abr-06	757.073.685,18	406.186.992,01	63,19%	53,65%	1,26%	14,14%
51	1-may-06	753.496.683,30	399.504.359,17	62,60%	53,02%	1,26%	14,13%
52	1-jun-06	749.903.078,18	392.379.303,86	62,01%	52,32%	1,26%	14,14%
53	1-jul-06	746.318.997,85	385.629.856,25	61,44%	51,67%	1,26%	14,13%
54	1-ago-06	742.718.281,41	378.462.793,09	60,86%	50,96%	1,26%	14,16%
55	1-sep-06	739.100.851,65	374.805.632,94	60,30%	50,71%	1,25%	14,01%
56	1-oct-06	735.466.630,99	368.714.578,57	59,73%	50,13%	1,25%	13,99%
57	1-nov-06	731.815.541,48	363.303.830,90	59,18%	49,64%	1,24%	13,93%
58	1-dic-06	728.147.504,84	357.755.940,18	58,62%	49,13%	1,24%	13,90%
59	1-ene-07	724.498.421,62	349.986.397,02	58,08%	48,31%	1,25%	13,98%
60	1-feb-07	720.832.400,59	343.637.487,31	57,54%	47,67%	1,25%	13,99%
61	1-mar-07	717.149.363,10	338.632.689,75	57,00%	47,22%	1,24%	13,94%
62	1-abr-07	713.449.230,18	334.334.773,79	56,47%	46,86%	1,23%	13,85%
63	1-may-07	709.731.922,48	328.566.147,99	55,94%	46,29%	1,23%	13,85%
64	1-jun-07	705.997.360,27	323.831.652,27	55,42%	45,87%	1,23%	13,80%
65	1-jul-07	702.276.916,27	317.422.711,80	54,90%	45,20%	1,23%	13,83%
66	1-ago-07	698.539.203,20	313.068.279,93	54,39%	44,82%	1,23%	13,77%
67	1-sep-07	694.784.140,91	309.903.729,44	53,88%	44,60%	1,22%	13,65%
68	1-oct-07	691.011.648,88	306.844.430,83	53,38%	44,41%	1,20%	13,53%
69	1-nov-07	687.221.646,19	302.953.643,62	52,88%	44,08%	1,20%	13,46%
70	1-dic-07	683.414.051,58	300.240.796,83	52,39%	43,93%	1,18%	13,33%
71	1-ene-08	679.654.390,30	290.685.227,82	51,90%	42,77%	1,21%	13,55%
72	1-feb-08	675.877.277,93	287.175.817,36	51,42%	42,49%	1,20%	13,47%
73	1-mar-08	672.082.633,46	284.295.478,55	50,94%	42,30%	1,19%	13,36%

74	1-abr-08	668.270.375,51	279.959.571,85	50,46%	41,89%	1,18%	13,33%	0,96%	10,97%
75	1-may-08	664.440.422,34	277.116.950,87	49,99%	41,71%	1,17%	13,22%	0,44%	5,21%
76	1-jun-08	660.592.691,80	273.736.785,58	49,53%	41,44%	1,17%	13,15%	0,64%	7,46%
77	1-jul-08	656.784.093,55	269.287.703,97	49,06%	41,00%	1,17%	13,13%	1,05%	11,95%
78	1-ago-08	652.957.817,05	265.480.611,09	48,61%	40,66%	1,16%	13,09%	0,84%	9,58%
79	1-sep-08	649.113.780,26	262.934.156,67	48,15%	40,51%	1,15%	12,98%	0,37%	4,38%
80	1-oct-08	645.251.900,73	257.017.816,26	47,70%	39,83%	1,16%	13,05%	1,67%	18,25%
81	1-nov-08	641.372.095,64	253.796.965,14	47,26%	39,57%	1,15%	12,98%	0,66%	7,59%
82	1-dic-08	637.474.281,79	253.034.979,81	46,82%	39,69%	1,13%	12,79%	-0,31%	-3,78%
83	1-ene-09	633.619.665,84	248.984.122,55	46,38%	39,30%	1,13%	12,78%	1,00%	11,39%
84	1-feb-09	629.747.158,05	245.892.346,76	45,95%	39,05%	1,13%	12,71%	0,63%	7,35%
85	1-mar-09	625.856.675,37	242.721.714,83	45,52%	38,78%	1,12%	12,66%	0,68%	7,82%
86	1-abr-09	621.948.134,36	239.660.002,37	45,10%	38,53%	1,12%	12,60%	0,64%	7,43%
87	1-may-09	618.021.451,21	236.929.494,08	44,68%	38,34%	1,11%	12,52%	0,51%	5,96%
88	1-jun-09	614.076.541,71	233.591.701,40	44,26%	38,04%	1,10%	12,48%	0,78%	8,92%
89	1-jul-09	610.215.446,79	230.919.275,33	43,85%	37,84%	1,10%	12,41%	0,52%	6,05%
90	1-ago-09	606.336.429,95	227.722.901,60	43,44%	37,56%	1,09%	12,37%	0,75%	8,67%
91	1-sep-09	602.439.408,00	224.965.948,55	43,03%	37,34%	1,09%	12,31%	0,57%	6,65%
92	1-oct-09	598.524.297,39	222.134.700,04	42,63%	37,11%	1,08%	12,25%	0,61%	7,11%
93	1-nov-09	594.591.014,13	218.071.313,12	42,23%	36,68%	1,08%	12,26%	1,18%	13,27%
94	1-dic-09	590.639.473,88	214.612.275,19	41,84%	36,34%	1,08%	12,25%	0,93%	10,58%
95	1-ene-10	586.831.116,90	210.991.830,11	41,45%	35,95%	1,08%	12,24%	1,05%	11,89%
96	1-feb-10	583.005.082,80	208.536.251,89	41,06%	35,77%	1,08%	12,18%	0,52%	6,01%
97	1-mar-10	579.161.289,52	205.823.790,41	40,68%	35,54%	1,07%	12,13%	0,65%	7,48%
98	1-abr-10	575.299.654,63	202.985.015,60	40,30%	35,28%	1,07%	12,09%	0,72%	8,28%
99	1-may-10	571.420.095,33	200.283.375,02	39,93%	35,05%	1,06%	12,05%	0,66%	7,65%
100	1-jun-10	567.522.528,40	197.884.880,95	39,55%	34,87%	1,06%	11,99%	0,52%	6,05%
101	1-jul-10	563.791.776,67	195.422.088,83	39,18%	34,66%	1,05%	11,94%	0,59%	6,87%
102	1-ago-10	560.043.708,04	193.029.799,42	38,82%	34,47%	1,05%	11,89%	0,56%	6,55%
103	1-sep-10	556.278.242,12	191.139.348,40	38,46%	34,36%	1,04%	11,81%	0,31%	3,65%
104	1-oct-10	552.495.298,16	189.144.901,93	38,10%	34,23%	1,04%	11,74%	0,37%	4,30%
105	1-nov-10	548.694.795,04	186.777.449,25	37,74%	34,04%	1,03%	11,69%	0,57%	6,60%
106	1-dic-10	544.876.651,25	184.528.318,10	37,39%	33,87%	1,03%	11,64%	0,51%	5,97%
107	1-ene-11	541.173.390,47	181.748.346,38	37,04%	33,58%	1,02%	11,62%	0,83%	9,55%
108	1-feb-11	537.452.940,38	179.635.592,90	36,70%	33,42%	1,02%	11,57%	0,48%	5,59%
109	1-mar-11	533.715.221,20	177.874.970,78	36,35%	33,33%	1,01%	11,49%	0,29%	3,39%
110	1-abr-11	529.960.152,78	175.729.075,10	36,02%	33,16%	1,01%	11,44%	0,51%	5,91%
111	1-may-11	526.187.654,58	173.869.118,62	35,68%	33,04%	1,00%	11,38%	0,35%	4,11%
112	1-jun-11	522.397.645,70	171.883.097,35	35,35%	32,90%	1,00%	11,32%	0,43%	4,98%
113	1-jul-11	518.661.127,89	169.703.951,56	35,02%	32,72%	0,99%	11,28%	0,56%	6,48%
114	1-ago-11	514.907.266,42	167.777.936,36	34,69%	32,58%	0,99%	11,23%	0,41%	4,86%
115	1-sep-11	511.135.980,76	165.849.483,75	34,37%	32,45%	0,98%	11,17%	0,42%	4,93%
116	1-oct-11	507.347.190,06	164.007.691,13	34,05%	32,33%	0,98%	11,12%	0,37%	4,37%
117	1-nov-11	503.540.813,05	162.003.586,19	33,73%	32,17%	0,97%	11,07%	0,48%	5,56%
118	1-dic-11	499.716.768,11	159.836.576,49	33,42%	31,99%	0,97%	11,03%	0,58%	6,77%
119	1-ene-12	495.985.493,72	157.063.492,09	33,10%	31,67%	0,97%	11,04%	1,00%	11,32%
120	1-feb-12	492.236.899,99	154.933.434,94	32,79%	31,48%	0,97%	11,00%	0,60%	7,02%
121	1-mar-12	488.470.906,55	152.694.101,29	32,49%	31,26%	0,96%	10,98%	0,69%	7,92%
122	1-abr-12	484.687.432,61	150.897.774,57	32,19%	31,13%	0,96%	10,93%	0,41%	4,75%
123	1-may-12	480.886.397,05	149.202.407,51	31,89%	31,03%	0,95%	10,87%	0,34%	4,03%
124	1-jun-12	477.067.718,35	147.150.529,29	31,59%	30,84%	0,95%	10,84%	0,59%	6,81%
125	1-jul-12	473.345.910,45	145.302.427,35	31,29%	30,70%	0,95%	10,80%	0,48%	5,60%
126	1-ago-12	469.606.827,15	143.274.257,68	31,00%	30,51%	0,95%	10,77%	0,61%	7,09%
127	1-sep-12	465.850.388,28	141.476.162,69	30,71%	30,37%	0,94%	10,73%	0,46%	5,37%
128	1-oct-12	462.076.513,27	139.527.123,44	30,43%	30,20%	0,94%	10,70%	0,57%	6,65%
129	1-nov-12	458.285.121,19	137.867.693,39	30,14%	30,08%	0,93%	10,65%	0,37%	4,37%
130	1-dic-12	454.476.130,73	135.715.274,76	29,86%	29,86%	0,93%	10,63%	0,74%	8,49%

DEAL 917.000.000,000
 MEZZ. DECLINN 7,00%
 MEZZ. STOPS DECLINN 0,75% 6.877.500,00
 VIDA RESIDUAL DESDE 18-dic-12

1,66

1,73

FECHA	Principal disponible para la amortización	SERIE A	SERIE B	SERIE A		SERIE B	
				PRINCIPAL	VIDA MEDIA	PRINCIPAL	VIDA MEDIA
18-abr-02	0,00	898.700.000,00	18.300.000,00	0,00	0,00	0,00	0,00
18-may-02	1 0,00	898.700.000,00	18.300.000,00	0,00	0,00	0,00	0,00
18-jun-02	1 36.107.473,60	898.700.000,00	18.300.000,00	36.107.473,60	-138.508.268.729,60	0,00	0,00
18-jul-02	1 0,00	862.592.526,40	18.300.000,00	0,00	0,00	0,00	0,00
18-ago-02	1 0,00	862.592.526,40	18.300.000,00	0,00	0,00	0,00	0,00
18-sep-02	1 29.833.636,04	862.592.526,40	18.300.000,00	29.833.636,04	-111.697.133.333,76	0,00	0,00
18-oct-02	1 0,00	832.758.890,36	18.300.000,00	0,00	0,00	0,00	0,00
18-nov-02	1 0,00	832.758.890,36	18.300.000,00	0,00	0,00	0,00	0,00
18-dic-02	1 29.035.485,09	832.758.890,36	18.300.000,00	29.035.485,09	-106.066.627.033,77	0,00	0,00
18-ene-03	1 0,00	803.723.405,27	18.300.000,00	0,00	0,00	0,00	0,00
18-feb-03	1 0,00	803.723.405,27	18.300.000,00	0,00	0,00	0,00	0,00
18-mar-03	1 29.190.037,43	803.723.405,27	18.300.000,00	29.190.037,43	-104.004.103.363,09	0,00	0,00
18-abr-03	1 0,00	774.533.367,84	18.300.000,00	0,00	0,00	0,00	0,00
18-may-03	1 0,00	774.533.367,84	18.300.000,00	0,00	0,00	0,00	0,00
18-jun-03	1 29.263.429,38	774.533.367,84	18.300.000,00	29.263.429,38	-101.573.363.377,98	0,00	0,00
18-jul-03	1 0,00	745.269.938,46	18.300.000,00	0,00	0,00	0,00	0,00
18-ago-03	1 0,00	745.269.938,46	18.300.000,00	0,00	0,00	0,00	0,00
18-sep-03	1 32.876.212,22	745.269.938,46	18.300.000,00	32.876.212,22	-111.088.721.091,38	0,00	0,00
18-oct-03	1 0,00	712.393.726,24	18.300.000,00	0,00	0,00	0,00	0,00
18-nov-03	1 0,00	712.393.726,24	18.300.000,00	0,00	0,00	0,00	0,00
18-dic-03	1 41.374.706,99	712.393.726,24	18.300.000,00	41.374.706,99	-136.040.036.583,12	0,00	0,00
18-ene-04	1 0,00	671.019.019,25	18.300.000,00	0,00	0,00	0,00	0,00
18-feb-04	1 0,00	671.019.019,25	18.300.000,00	0,00	0,00	0,00	0,00
18-mar-04	1 31.587.852,95	671.019.019,25	18.300.000,00	31.587.852,95	-100.986.365.881,15	0,00	0,00
18-abr-04	1 0,00	639.431.166,30	18.300.000,00	0,00	0,00	0,00	0,00
18-may-04	1 0,00	639.431.166,30	18.300.000,00	0,00	0,00	0,00	0,00
18-jun-04	1 30.680.268,96	639.431.166,30	18.300.000,00	30.680.268,96	-95.262.235.120,80	0,00	0,00
18-jul-04	1 0,00	608.750.897,34	18.300.000,00	0,00	0,00	0,00	0,00
18-ago-04	1 0,00	608.750.897,34	18.300.000,00	0,00	0,00	0,00	0,00
18-sep-04	1 54.870.748,74	608.750.897,34	18.300.000,00	54.870.748,74	-165.325.565.953,62	0,00	0,00
18-oct-04	1 0,00	553.880.148,60	18.300.000,00	0,00	0,00	0,00	0,00
18-nov-04	1 0,00	553.880.148,60	18.300.000,00	0,00	0,00	0,00	0,00
18-dic-04	1 28.559.151,21	553.880.148,60	18.300.000,00	28.559.151,21	-83.449.839.835,62	0,00	0,00
18-ene-05	1 0,00	525.320.997,39	18.300.000,00	0,00	0,00	0,00	0,00
18-feb-05	1 0,00	525.320.997,39	18.300.000,00	0,00	0,00	0,00	0,00
18-mar-05	1 30.283.696,66	525.320.997,39	18.300.000,00	30.283.696,66	-85.763.428.941,12	0,00	0,00
18-abr-05	1 0,00	495.037.300,73	18.300.000,00	0,00	0,00	0,00	0,00
18-may-05	1 0,00	495.037.300,73	18.300.000,00	0,00	0,00	0,00	0,00
18-jun-05	1 29.048.557,44	495.037.300,73	18.300.000,00	29.048.557,44	-79.593.047.385,60	0,00	0,00
18-jul-05	1 0,00	465.988.743,29	18.300.000,00	0,00	0,00	0,00	0,00
18-ago-05	1 0,00	465.988.743,29	18.300.000,00	0,00	0,00	0,00	0,00
18-sep-05	1 22.535.818,67	465.988.743,29	18.300.000,00	22.535.818,67	-59.674.847.838,16	0,00	0,00
18-oct-05	1 0,00	443.452.924,62	18.300.000,00	0,00	0,00	0,00	0,00
18-nov-05	1 0,00	443.452.924,62	18.300.000,00	0,00	0,00	0,00	0,00
18-dic-05	1 24.095.783,01	443.452.924,62	18.300.000,00	24.095.783,01	-61.612.917.156,57	0,00	0,00
18-ene-06	1 0,00	419.357.141,61	18.300.000,00	0,00	0,00	0,00	0,00
18-feb-06	1 0,00	419.357.141,61	18.300.000,00	0,00	0,00	0,00	0,00
18-mar-06	1 24.061.405,01	419.357.141,61	18.300.000,00	24.061.405,01	-59.359.486.159,67	0,00	0,00
18-abr-06	1 0,00	395.295.736,60	18.300.000,00	0,00	0,00	0,00	0,00
18-may-06	1 0,00	395.295.736,60	18.300.000,00	0,00	0,00	0,00	0,00
18-jun-06	1 21.216.432,74	395.295.736,60	18.300.000,00	21.216.432,74	-50.389.027.757,50	0,00	0,00
18-jul-06	1 0,00	374.079.303,86	18.300.000,00	0,00	0,00	0,00	0,00
18-ago-06	1 0,00	374.079.303,86	18.300.000,00	0,00	0,00	0,00	0,00
18-sep-06	1 17.573.670,92	374.079.303,86	18.300.000,00	17.573.670,92	-40.120.690.710,36	0,00	0,00
18-oct-06	1 0,00	356.505.632,94	18.300.000,00	0,00	0,00	0,00	0,00
18-nov-06	1 0,00	356.505.632,94	18.300.000,00	0,00	0,00	0,00	0,00
18-dic-06	1 17.049.692,76	356.505.632,94	18.300.000,00	17.049.692,76	-37.372.926.529,92	0,00	0,00
18-ene-07	1 0,00	339.455.940,18	18.300.000,00	0,00	0,00	0,00	0,00
18-feb-07	1 0,00	339.455.940,18	18.300.000,00	0,00	0,00	0,00	0,00
18-mar-07	1 19.123.250,43	339.455.940,18	18.300.000,00	19.123.250,43	-40.197.072.403,86	0,00	0,00
18-abr-07	1 0,00	320.332.689,75	18.300.000,00	0,00	0,00	0,00	0,00
18-may-07	1 0,00	320.332.689,75	18.300.000,00	0,00	0,00	0,00	0,00
18-jun-07	1 14.801.037,48	320.332.689,75	18.300.000,00	14.801.037,48	-29.750.085.334,80	0,00	0,00
18-jul-07	1 0,00	305.531.652,27	18.300.000,00	0,00	0,00	0,00	0,00
18-ago-07	1 0,00	305.531.652,27	18.300.000,00	0,00	0,00	0,00	0,00
18-sep-07	1 13.927.922,83	305.531.652,27	18.300.000,00	13.927.922,83	-26.713.755.987,94	0,00	0,00
18-oct-07	1 0,00	291.603.729,44	18.300.000,00	0,00	0,00	0,00	0,00
18-nov-07	1 0,00	291.603.729,44	18.300.000,00	0,00	0,00	0,00	0,00
18-dic-07	1 9.662.932,61	291.603.729,44	18.300.000,00	9.662.932,61	-17.654.177.878,47	0,00	0,00
18-ene-08	1 0,00	281.940.796,83	18.300.000,00	0,00	0,00	0,00	0,00
18-feb-08	1 0,00	281.940.796,83	18.300.000,00	0,00	0,00	0,00	0,00
18-mar-08	1 15.945.318,28	281.940.796,83	18.300.000,00	15.945.318,28	-27.681.072.534,08	0,00	0,00
18-abr-08	1 0,00	265.995.478,55	18.300.000,00	0,00	0,00	0,00	0,00
18-may-08	1 0,00	265.995.478,55	18.300.000,00	0,00	0,00	0,00	0,00

DEAL 917.000.000,000
 MEZZ. DECLINN 7,00%
 MEZZ. STOPS DECLINN 0,75% 6.877.500,00
 VIDA RESIDUAL DESDE 18-dic-12

1,66 1,73

		SERIE A				SERIE B			
Principal		PRINCIPAL		VIDA		PRINCIPAL		VIDA	
18-jun-08	1	10.558.692,97	265.995.478,55	18.300.000,00	10.166.706,98	-16.714.066.274,97	391.985,99	-644.424.967,71	
18-jul-08	1	0,00	255.828.771,57	17.908.014,01	0,00	0,00	0,00	0,00	0,00
18-ago-08	1	0,00	255.828.771,57	17.908.014,01	0,00	0,00	0,00	0,00	0,00
18-sep-08	1	10.802.628,91	255.828.771,57	17.908.014,01	10.095.914,87	-15.668.859.876,93	706.714,04	-1.096.820.191,39	
18-oct-08	1	0,00	245.732.856,70	17.201.299,97	0,00	0,00	0,00	0,00	0,00
18-nov-08	1	0,00	245.732.856,70	17.201.299,97	0,00	0,00	0,00	0,00	0,00
18-dic-08	1	9.899.176,86	245.732.856,70	17.201.299,97	9.251.567,16	-13.516.539.619,12	647.609,70	-946.157.773,34	
18-ene-09	1	0,00	236.481.289,54	16.553.690,27	0,00	0,00	0,00	0,00	0,00
18-feb-09	1	0,00	236.481.289,54	16.553.690,27	0,00	0,00	0,00	0,00	0,00
18-mar-09	1	10.313.264,98	236.481.289,54	16.553.690,27	9.638.565,40	-13.214.473.165,96	674.699,58	-925.013.121,62	
18-abr-09	1	0,00	226.842.724,14	15.878.990,69	0,00	0,00	0,00	0,00	0,00
18-may-09	1	0,00	226.842.724,14	15.878.990,69	0,00	0,00	0,00	0,00	0,00
18-jun-09	1	9.130.013,43	226.842.724,14	15.878.990,69	8.532.722,83	-10.913.352.501,84	597.290,60	-763.934.675,13	
18-jul-09	1	0,00	218.310.001,31	15.281.700,09	0,00	0,00	0,00	0,00	0,00
18-ago-09	1	0,00	218.310.001,31	15.281.700,09	0,00	0,00	0,00	0,00	0,00
18-sep-09	1	8.625.752,85	218.310.001,31	15.281.700,09	8.061.451,26	-9.568.942.647,62	564.301,59	-669.825.985,33	
18-oct-09	1	0,00	210.248.550,05	14.717.398,50	0,00	0,00	0,00	0,00	0,00
18-nov-09	1	0,00	210.248.550,05	14.717.398,50	0,00	0,00	0,00	0,00	0,00
18-dic-09	1	10.353.673,36	210.248.550,05	14.717.398,50	9.676.330,24	-10.605.257.946,32	677.343,12	-742.368.056,24	
18-ene-10	1	0,00	200.572.219,80	14.040.055,39	0,00	0,00	0,00	0,00	0,00
18-feb-10	1	0,00	200.572.219,80	14.040.055,39	0,00	0,00	0,00	0,00	0,00
18-mar-10	1	8.788.484,78	200.572.219,80	14.040.055,39	8.213.537,18	-8.262.818.400,64	574.947,60	-578.397.288,04	
18-abr-10	1	0,00	192.358.682,63	13.465.107,78	0,00	0,00	0,00	0,00	0,00
18-may-10	1	0,00	192.358.682,63	13.465.107,78	0,00	0,00	0,00	0,00	0,00
18-jun-10	1	7.938.909,46	192.358.682,63	13.465.107,78	7.419.541,55	-6.781.460.977,98	519.367,91	-474.702.268,46	
18-jul-10	1	0,00	184.939.141,07	12.945.739,88	0,00	0,00	0,00	0,00	0,00
18-ago-10	1	0,00	184.939.141,07	12.945.739,88	0,00	0,00	0,00	0,00	0,00
18-sep-10	1	6.745.532,55	184.939.141,07	12.945.739,88	6.304.236,03	-5.182.082.015,05	441.296,52	-362.745.741,05	
18-oct-10	1	0,00	178.634.905,05	12.504.443,35	0,00	0,00	0,00	0,00	0,00
18-nov-10	1	0,00	178.634.905,05	12.504.443,35	0,00	0,00	0,00	0,00	0,00
18-dic-10	1	6.611.030,30	178.634.905,05	12.504.443,35	6.178.532,99	-4.516.507.616,17	432.497,31	-316.155.533,13	
18-ene-11	1	0,00	172.456.372,06	12.071.946,04	0,00	0,00	0,00	0,00	0,00
18-feb-11	1	0,00	172.456.372,06	12.071.946,04	0,00	0,00	0,00	0,00	0,00
18-mar-11	1	6.653.347,32	172.456.372,06	12.071.946,04	6.218.081,61	-3.985.790.310,39	435.265,71	-279.005.321,73	
18-abr-11	1	0,00	166.238.290,45	11.636.680,33	0,00	0,00	0,00	0,00	0,00
18-may-11	1	0,00	166.238.290,45	11.636.680,33	0,00	0,00	0,00	0,00	0,00
18-jun-11	1	5.991.873,43	166.238.290,45	11.636.680,33	5.599.881,71	-3.074.335.058,94	391.991,72	-215.203.454,13	
18-jul-11	1	0,00	160.638.408,74	11.244.688,61	0,00	0,00	0,00	0,00	0,00
18-ago-11	1	0,00	160.638.408,74	11.244.688,61	0,00	0,00	0,00	0,00	0,00
18-sep-11	1	6.033.613,60	160.638.408,74	11.244.688,61	5.638.891,21	-2.576.973.285,23	394.722,39	-180.388.129,97	
18-oct-11	1	0,00	154.999.517,52	10.849.966,23	0,00	0,00	0,00	0,00	0,00
18-nov-11	1	0,00	154.999.517,52	10.849.966,23	0,00	0,00	0,00	0,00	0,00
18-dic-11	1	6.012.907,26	154.999.517,52	10.849.966,23	5.619.539,50	-2.056.751.455,29	393.367,76	-143.972.601,87	
18-ene-12	1	0,00	149.379.978,03	10.456.598,46	0,00	0,00	0,00	0,00	0,00
18-feb-12	1	0,00	149.379.978,03	10.456.598,46	0,00	0,00	0,00	0,00	0,00
18-mar-12	1	1.136.896,03	149.379.978,03	10.456.598,46	1.062.519,65	-292.192.904,92	74.376,38	-20.453.503,34	
18-abr-12	1	0,00	148.317.458,37	10.382.222,09	0,00	0,00	0,00	0,00	0,00
18-may-12	1	0,00	148.317.458,37	10.382.222,09	0,00	0,00	0,00	0,00	0,00
18-jun-12	1	8.000.526,49	148.317.458,37	10.382.222,09	7.477.127,57	-1.368.314.344,47	523.398,93	-95.782.004,11	
18-jul-12	1	0,00	140.840.330,81	9.858.823,16	0,00	0,00	0,00	0,00	0,00
18-ago-12	1	0,00	140.840.330,81	9.858.823,16	0,00	0,00	0,00	0,00	0,00
18-sep-12	1	7.621.872,59	140.840.330,81	9.858.823,16	7.123.245,41	-648.215.332,34	498.627,18	-45.375.073,26	
18-oct-12	1	0,00	133.717.085,40	9.360.195,98	0,00	0,00	0,00	0,00	0,00
18-nov-12	1	0,00	133.717.085,40	9.360.195,98	0,00	0,00	0,00	0,00	0,00
18-dic-12	1	7.362.006,62	133.717.085,40	9.360.195,98	6.880.380,01	0,00	481.626,60	0,00	0,00
18-ene-13	1	0,00	126.836.705,38	8.878.569,38	0,00	0,00	0,00	0,00	0,00
18-feb-13	1	0,00	126.836.705,38	8.878.569,38	0,00	0,00	0,00	0,00	0,00
18-mar-13	1	7.000.906,38	126.836.705,38	8.878.569,38	6.542.903,16	588.861.284,18	458.003,22	41.220.289,89	
18-abr-13	1	0,00	120.293.802,23	8.420.566,16	0,00	0,00	0,00	0,00	0,00
18-may-13	1	0,00	120.293.802,23	8.420.566,16	0,00	0,00	0,00	0,00	0,00
18-jun-13	1	6.761.153,57	120.293.802,23	8.420.566,16	6.318.835,11	1.150.027.989,90	442.318,46	80.501.959,29	
18-jul-13	1	0,00	113.974.967,12	7.978.247,70	0,00	0,00	0,00	0,00	0,00
18-ago-13	1	0,00	113.974.967,12	7.978.247,70	0,00	0,00	0,00	0,00	0,00
18-sep-13	1	6.445.656,80	113.974.967,12	7.978.247,70	6.023.978,31	1.650.570.058,24	421.678,48	115.539.904,08	
18-oct-13	1	0,00	107.950.988,80	7.556.569,22	0,00	0,00	0,00	0,00	0,00
18-nov-13	1	0,00	107.950.988,80	7.556.569,22	0,00	0,00	0,00	0,00	0,00
18-dic-13	1	6.223.746,23	107.950.988,80	7.556.569,22	5.816.585,26	2.123.053.620,15	407.160,97	148.613.753,41	
18-ene-14	1	0,00	102.134.403,54	7.149.408,25	0,00	0,00	0,00	0,00	0,00
18-feb-14	1	0,00	102.134.403,54	7.149.408,25	0,00	0,00	0,00	0,00	0,00
18-mar-14	1	5.920.919,60	102.134.403,54	7.149.408,25	5.920.919,60	2.694.018.418,34	0,00	0,00	0,00
18-abr-14	1	0,00	96.213.483,94	7.149.408,25	0,00	0,00	0,00	0,00	0,00
18-may-14	1	0,00	96.213.483,94	7.149.408,25	0,00	0,00	0,00	0,00	0,00
18-jun-14	1	5.716.002,38	96.213.483,94	7.149.408,25	5.716.002,38	3.126.653.303,58	0,00	0,00	0,00
18-jul-14	1	0,00	90.497.481,56	7.149.408,25	0,00	0,00	0,00	0,00	0,00
18-ago-14	1	0,00	90.497.481,56	7.149.408,25	0,00	0,00	0,00	0,00	0,00
18-sep-14	1	5.371.506,74	90.497.481,56	7.149.408,25	5.371.506,74	3.432.392.809,71	0,00	0,00	0,00
18-oct-14	1	0,00	85.125.974,81	7.149.408,25	0,00	0,00	0,00	0,00	0,00
18-nov-14	1	0,00	85.125.974,81	7.149.408,25	0,00	0,00	0,00	0,00	0,00

DEAL				917.000.000,000				
MEZZ. DECLINN				7,00%				
MEZZ. STOPS DECLINN				0,75%	6.877.500,00			
VIDA RESIDUAL DESDE				18-dic-12				
						1,66		1,73
				SERIE A			SERIE B	
	Principal			PRINCIPAL	VIDA	PRINCIPAL	VIDA	
18-dic-14 1	92.275.383,06	85.125.974,81	7.149.408,25	85.125.974,81	62.141.961.613,10	7.149.408,25	5.219.068.020,94	